

Data Path : Z:\HPCHEM1\BNA M\DATA\BM111717\
 Data File : BM012996.D
 Acq On : 17 Nov 2017 12:19
 Operator : SJ/JU
 Sample : I6361-05
 Misc :
 ALS Vial : 6 Sample Multiplier: 1

Instrument :
 BNA_M
 ClientSampleId :
 BE2Q8

Integration Parameters: LSCINT.P
 Integrator: RTE
 Smoothing : OFF Filtering: 5
 Sampling : 1 Min Area: 1 % of largest Peak
 Start Thrs: 0.2 Max Peaks: 100
 Stop Thrs : 0 Peak Location: TOP

If leading or trailing edge < 100 prefer < Baseline drop else tangent >
 Peak separation: 5

Method : Z:\HPCHEM1\BNA M\METHODS\SOM-EPA-BM111617.M
 Title : SVOA CALIBRATION

Signal : TIC

peak #	R.T. min	first scan	max scan	last scan	PK TY	peak height	corr. area	corr. % max.	% of total
1	3.187	13	17	22	rVB	12028593	11705306	100.00%	18.344%
2	3.516	69	73	79	rVB	276176	318093	2.72%	0.499%
3	6.887	640	646	653	rVB	170266	263244	2.25%	0.413%
4	7.063	669	676	684	rBV	807653	1242637	10.62%	1.947%
5	7.251	700	708	720	rVB	942790	1490994	12.74%	2.337%
6	7.722	781	788	795	rBV	864411	1326293	11.33%	2.079%
7	8.422	899	907	917	rBV	658408	1056576	9.03%	1.656%
8	8.875	976	984	992	rBV	1107793	1820193	15.55%	2.853%
9	9.592	1096	1106	1116	rBV	853123	1406847	12.02%	2.205%
10	10.122	1189	1196	1208	rBV	1395245	2237157	19.11%	3.506%
11	10.504	1253	1261	1269	rVB	1082645	1748241	14.94%	2.740%
12	13.780	1811	1818	1825	rBV	2572614	3520266	30.07%	5.517%
13	14.051	1857	1864	1871	rBV	2843148	4242178	36.24%	6.648%
14	14.363	1910	1917	1925	rBV2	1478075	2236740	19.11%	3.505%
15	15.357	2079	2086	2095	rVB	3662934	5122326	43.76%	8.027%
16	15.468	2098	2105	2116	rBV	893648	1203540	10.28%	1.886%
17	17.110	2377	2384	2390	rVB2	1865996	2657282	22.70%	4.164%
18	17.210	2394	2401	2412	rVB	3770079	5398528	46.12%	8.460%
19	19.504	2784	2791	2797	rBV	4085789	5523869	47.19%	8.657%
20	21.292	3090	3095	3101	rBV	2114809	2578111	22.03%	4.040%
21	23.386	3443	3451	3459	rBV2	2484429	4513994	38.56%	7.074%
22	23.527	3468	3475	3485	rVB	1151953	2197483	18.77%	3.444%

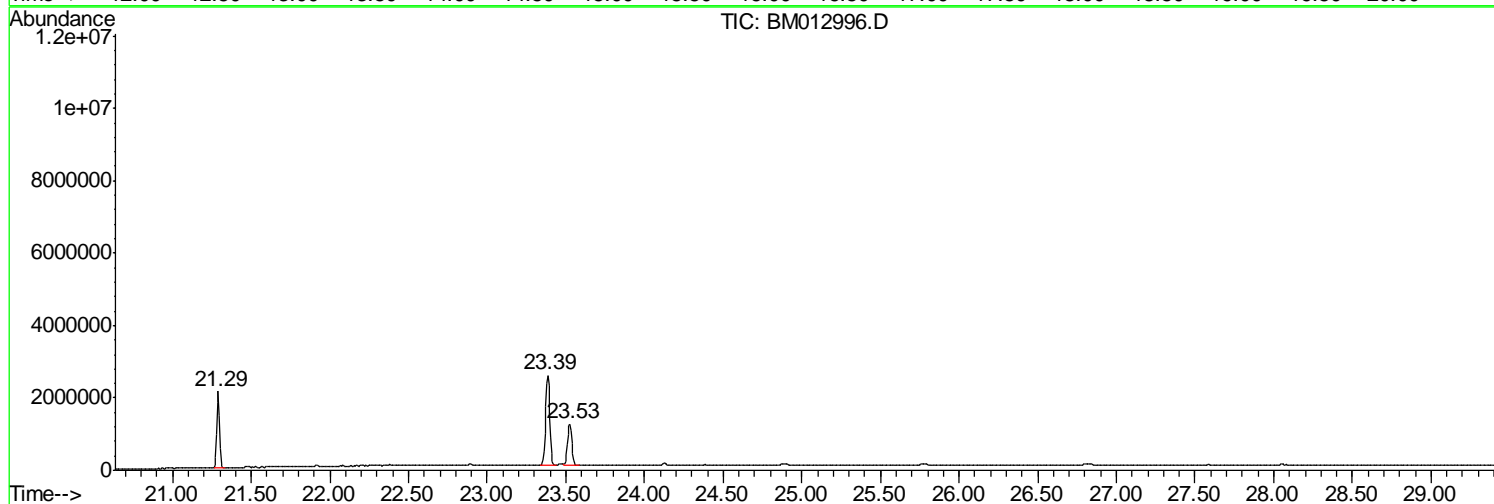
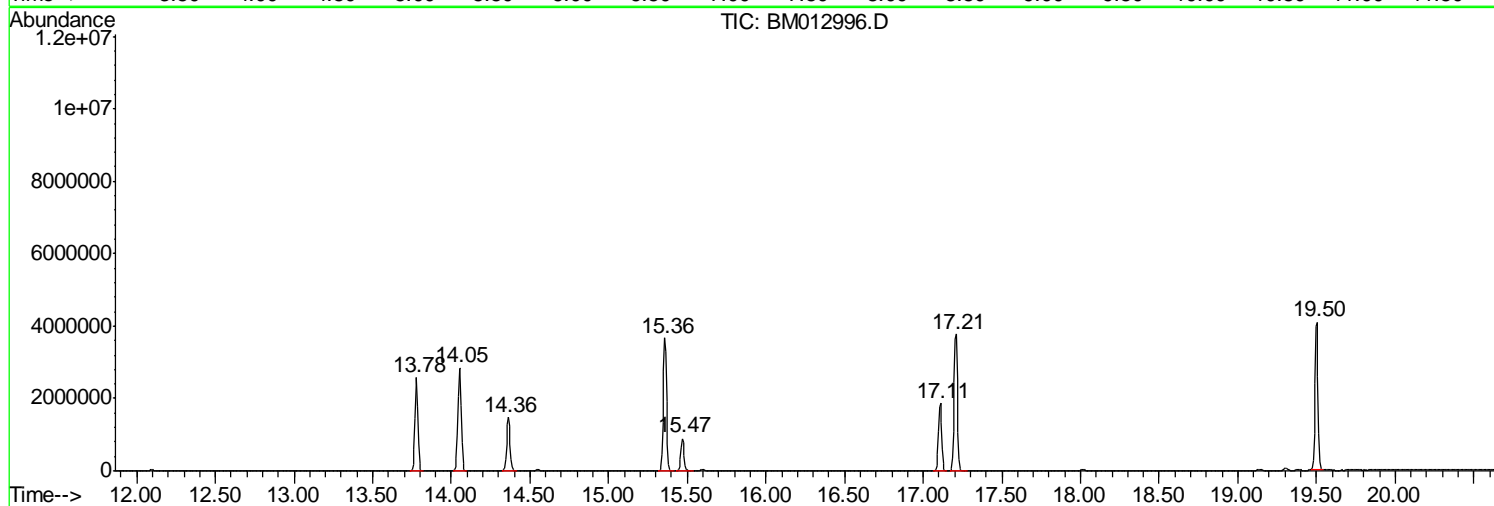
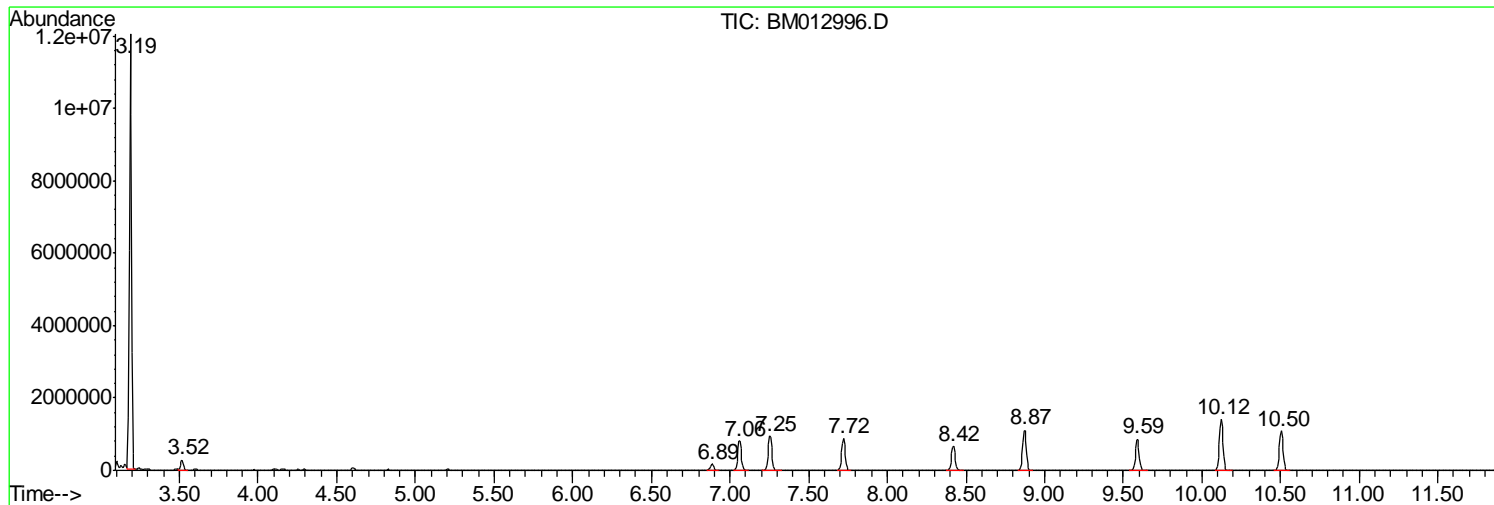
Sum of corrected areas: 63809898

Data Path : Z:\HPCHEM1\BNA M\DATA\BM111717\
Data File : BM012996.D
Acq On : 17 Nov 2017 12:19
Operator : SJ/JU
Sample : I6361-05
Misc :
ALS Vial : 6 Sample Multiplier: 1

Instrument :
BNA_M
ClientSampleId :
BE2Q8

Quant Method : Z:\HPCHEM1\BNA M\METHODS\SOM-EPA-BM111617.M
Quant Title : SVOA CALIBRATION

TIC Library : C:\DATABASE\NIST11.L
TIC Integration Parameters: LSCINT.P



Data Path : Z:\HPCHEM1\BNA M\DATA\BM111717\
 Data File : BM012996.D
 Acq On : 17 Nov 2017 12:19
 Operator : SJ/JU
 Sample : I6361-05
 Misc :
 ALS Vial : 6 Sample Multiplier: 1

Instrument :
 BNA_M
 ClientSampled :
 BE2Q8

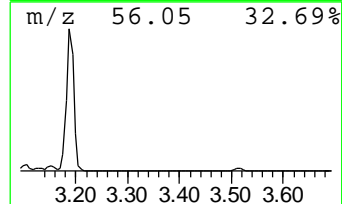
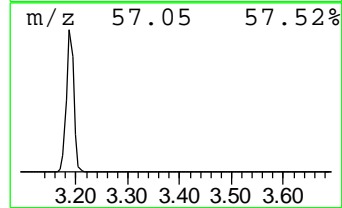
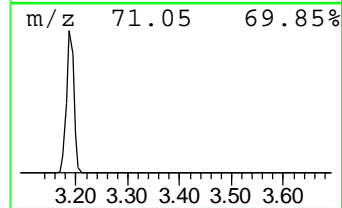
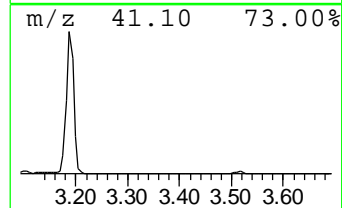
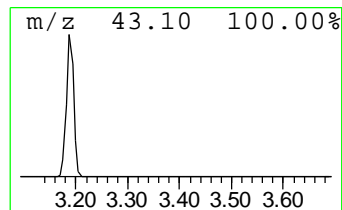
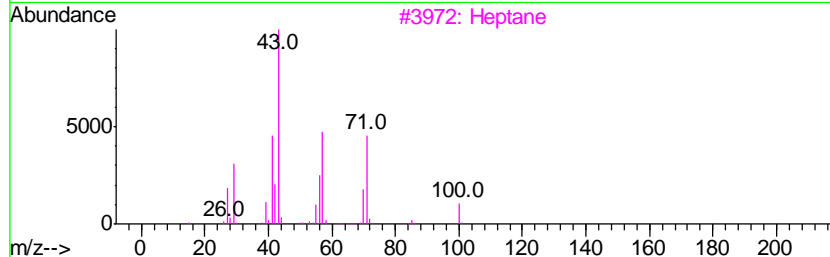
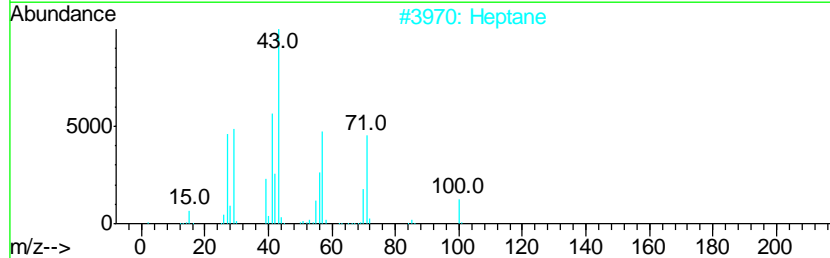
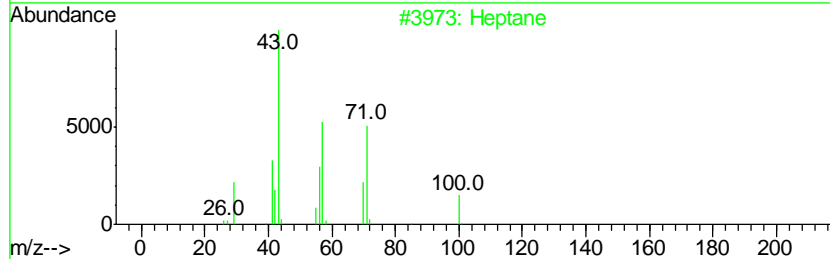
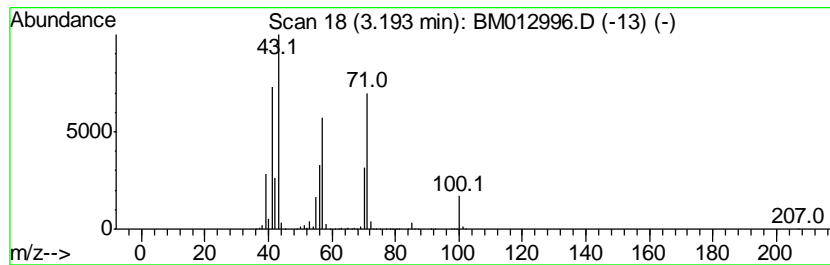
Quant Method : Z:\HPCHEM1\BNA M\METHODS\SOM-EPA-BM111617.M
 Quant Title : SVOA CALIBRATION

TIC Library : C:\DATABASE\NIST11.L
 TIC Integration Parameters: LSCINT.P

 Peak Number 1 (DEL) Alkane: Straight-Chai... Concentration Rank 1

R.T.	EstConc	Area	Relative to ISTD	R.T.
3.19	176.51 ng/ul	11705300	1,4-Dichlorobenzene-d4	7.72

Hit#	of	Tentative ID	MW	MolForm	CAS#	Qual
1	5	Heptane	100	C7H16	000142-82-5	91
2		Heptane	100	C7H16	000142-82-5	87
3		Heptane	100	C7H16	000142-82-5	87
4		Heptane	100	C7H16	000142-82-5	62
5		Butane, 2,2-dimethyl-	86	C6H14	000075-83-2	43



Data Path : Z:\HPCHEM1\BNA M\DATA\BM111717\
 Data File : BM012996.D
 Acq On : 17 Nov 2017 12:19
 Operator : SJ/JU
 Sample : I6361-05
 Misc :
 ALS Vial : 6 Sample Multiplier: 1

Instrument :
 BNA_M
 ClientSampled :
 BE2Q8

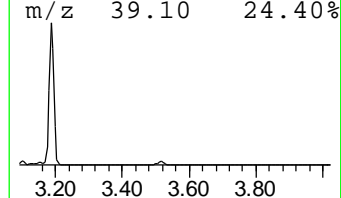
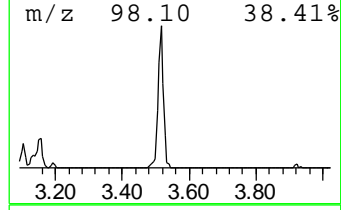
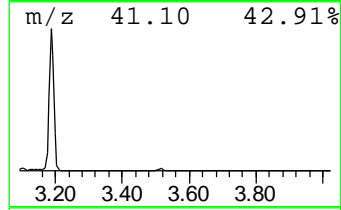
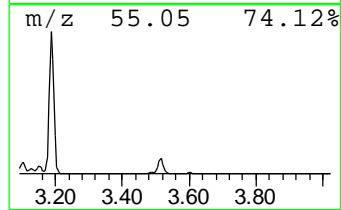
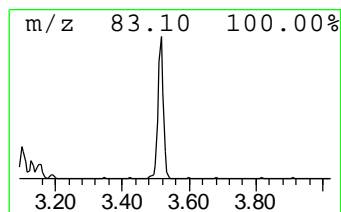
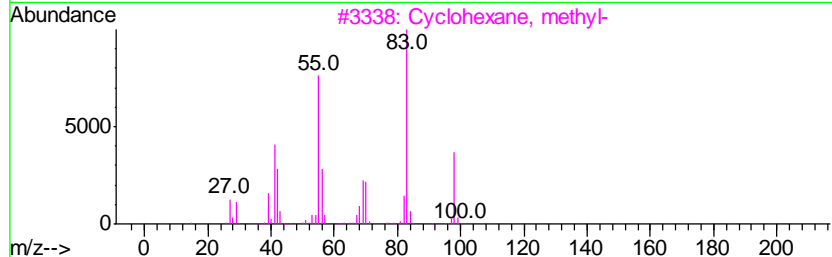
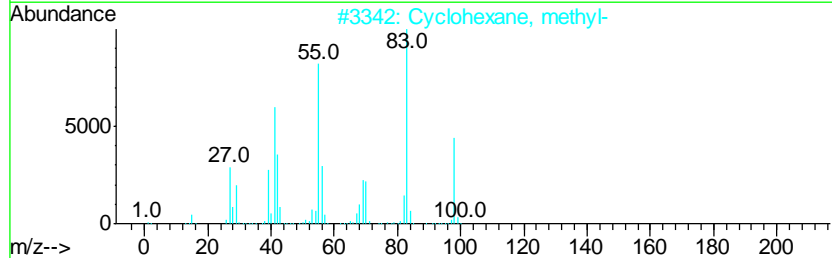
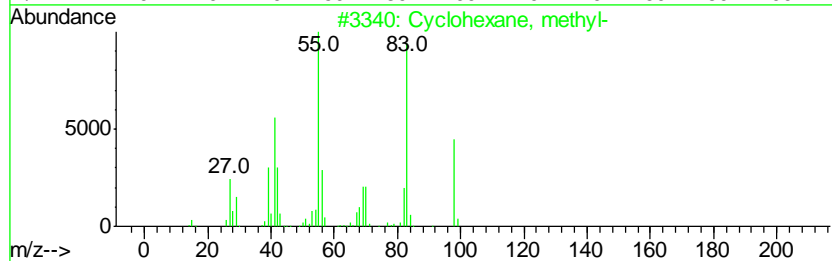
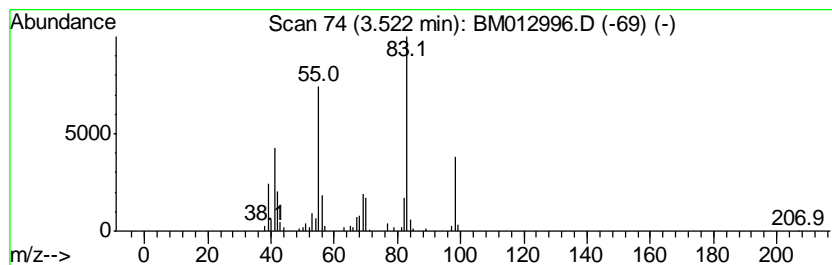
Quant Method : Z:\HPCHEM1\BNA M\METHODS\SOM-EPA-BM111617.M
 Quant Title : SVOA CALIBRATION

TIC Library : C:\DATABASE\NIST11.L
 TIC Integration Parameters: LSCINT.P

 Peak Number 2 (DEL) Alkane: Cyclic3.52 Concentration Rank 2

R.T.	EstConc	Area	Relative to ISTD	R.T.
3.52	4.80 ng/ul	318093	1,4-Dichlorobenzene-d4	7.72

Hit#	of	Tentative ID	MW	MolForm	CAS#	Qual
1	5	Cyclohexane, methyl-	98	C7H14	000108-87-2	93
2		Cyclohexane, methyl-	98	C7H14	000108-87-2	91
3		Cyclohexane, methyl-	98	C7H14	000108-87-2	91
4		Cyclohexane, methyl-	98	C7H14	000108-87-2	91
5		2-Pentene, 3,4-dimethyl-, (E)-	98	C7H14	004914-92-5	72



Data Path : Z:\HPCHEM1\BNA_M\DATA\BM111717\
Data File : BM012996.D
Acq On : 17 Nov 2017 12:19
Operator : SJ/JU
Sample : I6361-05
Misc :
ALS Vial : 6 Sample Multiplier: 1

Instrument :
BNA_M
ClientSampleId :
BE2Q8

Quant Method : Z:\HPCHEM1\BNA_M\METHODS\SOM-EPA-BM111617.M
Quant Title : SVOA CALIBRATION

TIC Library : C:\DATABASE\NIST11.L
TIC Integration Parameters: LSCINT.P

TIC Top Hit name	RT	EstConc	Units	Response	--Internal Standard--			
					#	RT	Resp	Conc
(DEL) Alkane: Str...	3.19	176.5	ng/ul	11705300	1	7.72	1326290	20.0
(DEL) Alkane: Cyc...	3.52	4.8	ng/ul	318093	1	7.72	1326290	20.0