

Data Path : Z:\HPCHEM1\BNA M\DATA\BM111717\  
 Data File : BM013002.D  
 Acq On : 17 Nov 2017 16:41  
 Operator : SJ/JU  
 Sample : I6361-19  
 Misc :  
 ALS Vial : 13 Sample Multiplier: 1

Instrument :  
 BNA\_M  
 ClientSampleId :  
 BE2S1

Integration Parameters: LSCINT.P  
 Integrator: RTE  
 Smoothing : OFF  
 Sampling : 1  
 Start Thrs: 0.2  
 Stop Thrs : 0

Filtering: 5  
 Min Area: 1 % of largest Peak  
 Max Peaks: 100  
 Peak Location: TOP

If leading or trailing edge < 100 prefer < Baseline drop else tangent >  
 Peak separation: 5

Method : Z:\HPCHEM1\BNA M\METHODS\SOM-EPA-BM111617.M  
 Title : SVOA CALIBRATION

Signal : TIC

peak #	R.T. min	first scan	max scan	last scan	PK TY	peak height	corr. area	corr. % max.	% of total
1	3.252	24	28	33	rVB	46512	52721	1.23%	0.143%
2	6.887	639	646	652	rBV	155465	243310	5.70%	0.659%
3	7.063	667	676	684	rBV	513659	795226	18.61%	2.154%
4	7.251	701	708	719	rVB	594246	922816	21.60%	2.499%
5	7.722	781	788	795	rVB	503774	800392	18.73%	2.168%
6	8.416	900	906	918	rBV	433918	694844	16.26%	1.882%
7	8.869	977	983	992	rBV	691025	1122356	26.27%	3.039%
8	9.586	1098	1105	1116	rBV	509619	861869	20.17%	2.334%
9	10.122	1188	1196	1204	rBV	830256	1337335	31.30%	3.622%
10	10.504	1253	1261	1268	rBV	683076	1114332	26.08%	3.018%
11	13.774	1811	1817	1825	rVB	1589682	2217275	51.90%	6.005%
12	14.051	1858	1864	1871	rVB	1780902	2563197	60.00%	6.941%
13	14.363	1910	1917	1927	rVB2	1019638	1500341	35.12%	4.063%
14	14.551	1940	1949	1955	rBV	152808	232869	5.45%	0.631%
15	15.357	2079	2086	2094	rBV	2315555	3175397	74.33%	8.599%
16	15.468	2099	2105	2111	rBV	600608	799137	18.71%	2.164%
17	17.104	2377	2383	2390	rVB2	1283307	1877014	43.93%	5.083%
18	17.204	2393	2400	2409	rBV	2539761	3520702	82.41%	9.534%
19	19.298	2750	2756	2761	rBV7	38136	50260	1.18%	0.136%
20	19.498	2784	2790	2796	rBV	3043656	4092572	95.79%	11.083%
21	21.292	3089	3095	3103	rVB	1889146	2330611	54.55%	6.312%
22	22.886	3364	3366	3373	rVB6	54967	81775	1.91%	0.221%
23	23.385	3443	3451	3459	rBV	2368288	4272287	100.00%	11.570%
24	23.527	3468	3475	3482	rVB2	1179750	2267547	53.08%	6.141%

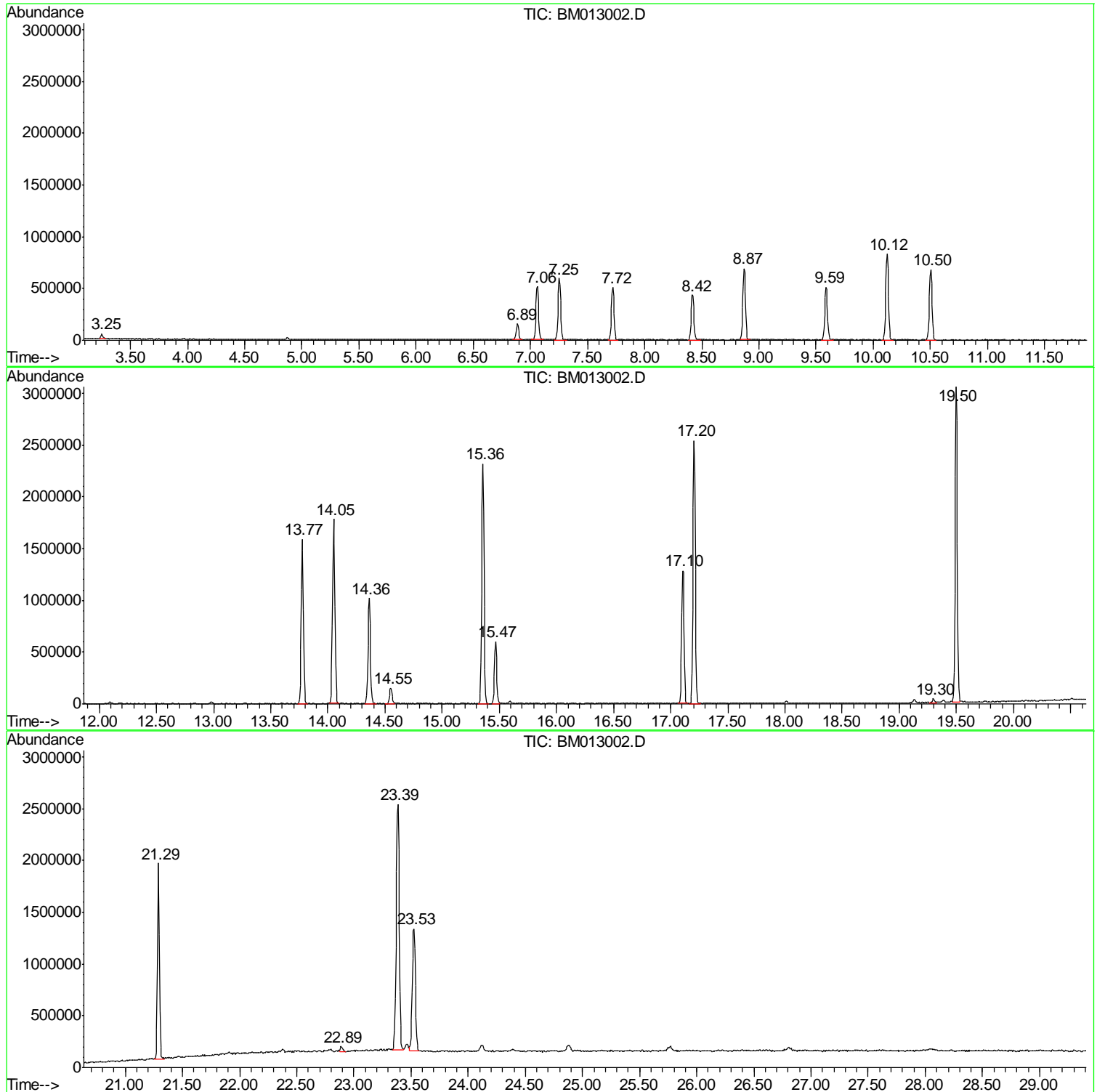
Sum of corrected areas: 36926185

Data Path : Z:\HPCHEM1\BNA M\DATA\BM111717\  
Data File : BM013002.D  
Acq On : 17 Nov 2017 16:41  
Operator : SJ/JU  
Sample : I6361-19  
Misc :  
ALS Vial : 13 Sample Multiplier: 1

Instrument :  
BNA\_M  
ClientSampled :  
BE2S1

Quant Method : Z:\HPCHEM1\BNA M\METHODS\SOM-EPA-BM111617.M  
Quant Title : SVOA CALIBRATION

TIC Library : C:\DATABASE\NIST11.L  
TIC Integration Parameters: LSCINT.P



Data Path : Z:\HPCHEM1\BNA\_M\DATA\BM111717\  
Data File : BM013002.D  
Acq On : 17 Nov 2017 16:41  
Operator : SJ/JU  
Sample : I6361-19  
Misc :  
ALS Vial : 13 Sample Multiplier: 1

Instrument :  
BNA\_M  
ClientSampleId :  
BE2S1

Quant Method : Z:\HPCHEM1\BNA\_M\METHODS\SOM-EPA-BM111617.M  
Quant Title : SVOA CALIBRATION

TIC Library : C:\DATABASE\NIST11.L  
TIC Integration Parameters: LSCINT.P

No Library Search Compounds Detected

\*\*\*\*\*

Data Path : Z:\HPCHEM1\BNA\_M\DATA\BM111717\  
Data File : BM013002.D  
Acq On : 17 Nov 2017 16:41  
Operator : SJ/JU  
Sample : I6361-19  
Misc :  
ALS Vial : 13 Sample Multiplier: 1

Instrument :  
BNA\_M  
ClientSampleId :  
BE2S1

Quant Method : Z:\HPCHEM1\BNA\_M\METHODS\SOM-EPA-BM111617.M  
Quant Title : SVOA CALIBRATION

TIC Library : C:\DATABASE\NIST11.L  
TIC Integration Parameters: LSCINT.P

TIC Top Hit name	RT	EstConc	Units	Response	--Internal Standard--			
					#	RT	Resp	Conc

---