

Data Path : Z:\HPCHEM1\BNA M\DATA\BM111717\  
 Data File : BM013013.D  
 Acq On : 17 Nov 2017 23:13  
 Operator : SJ/JU  
 Sample : I6451-14  
 Misc :  
 ALS Vial : 23 Sample Multiplier: 1

Instrument :  
 BNA\_M  
 ClientSampleId :  
 BE2X7

## Integration Parameters: LSCINT.P

Integrator: RTE  
 Smoothing : OFF Filtering: 5  
 Sampling : 1 Min Area: 1 % of largest Peak  
 Start Thrs: 0.2 Max Peaks: 100  
 Stop Thrs : 0 Peak Location: TOP

If leading or trailing edge < 100 prefer < Baseline drop else tangent >  
 Peak separation: 5

Method : Z:\HPCHEM1\BNA M\METHODS\SOM-EPA-BM111617.M  
 Title : SVOA CALIBRATION

Signal : TIC

peak #	R.T. min	first scan	max scan	last scan	PK TY	peak height	corr. area	corr. % max.	% of total
1	3.252	24	28	36	rBV	44890	60066	1.76%	0.188%
2	6.887	637	646	654	rBV	144891	236370	6.91%	0.739%
3	7.057	667	675	685	rBV	473250	707028	20.67%	2.211%
4	7.251	700	708	716	rBV	542757	835761	24.44%	2.614%
5	7.716	781	787	795	rBV	563675	895905	26.19%	2.802%
6	8.416	899	906	916	rBV	403121	626089	18.31%	1.958%
7	8.869	975	983	993	rVB	628106	997606	29.17%	3.120%
8	9.586	1099	1105	1112	rBV	455441	738070	21.58%	2.308%
9	10.116	1189	1195	1205	rBV	705186	1146230	33.51%	3.585%
10	10.498	1253	1260	1267	rVB	706564	1180259	34.51%	3.691%
11	13.774	1810	1817	1828	rVB	1319436	1820596	53.23%	5.693%
12	14.051	1857	1864	1871	rVB	1179547	1787035	52.25%	5.588%
13	14.357	1910	1916	1924	rVB3	1006878	1497671	43.79%	4.684%
14	14.551	1943	1949	1956	rBV	123075	188230	5.50%	0.589%
15	15.351	2079	2085	2092	rBV	1847412	2601007	76.05%	8.134%
16	15.463	2099	2104	2113	rVB	467914	638795	18.68%	1.998%
17	17.104	2376	2383	2389	rBV2	1297786	1815096	53.07%	5.676%
18	17.204	2393	2400	2411	rBV	1953997	2811282	82.20%	8.791%
19	19.498	2783	2790	2796	rBV	2463588	3256142	95.20%	10.183%
20	21.286	3089	3094	3100	rBV	1857059	2195876	64.20%	6.867%
21	22.880	3362	3365	3371	rVB5	61801	83241	2.43%	0.260%
22	23.380	3443	3450	3458	rVV2	1931078	3420213	100.00%	10.696%
23	23.450	3460	3462	3466	rVV4	71643	97977	2.86%	0.306%
24	23.521	3467	3474	3482	rVB	1196642	2212557	64.69%	6.919%
25	24.109	3570	3574	3581	rVB5	68293	128257	3.75%	0.401%

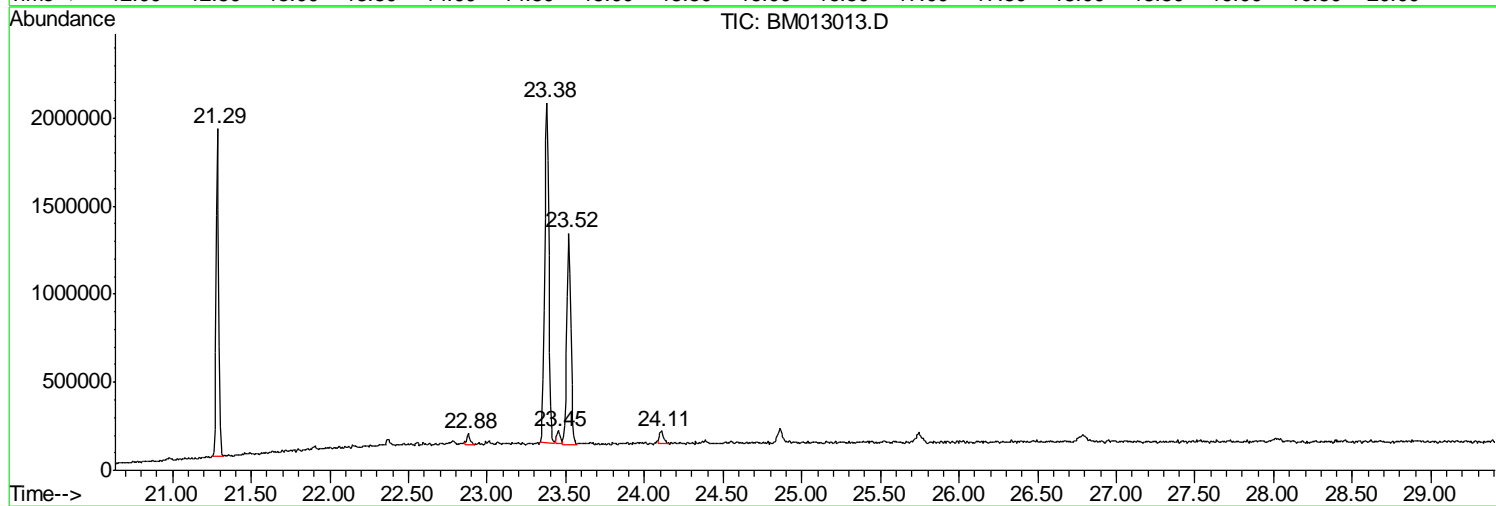
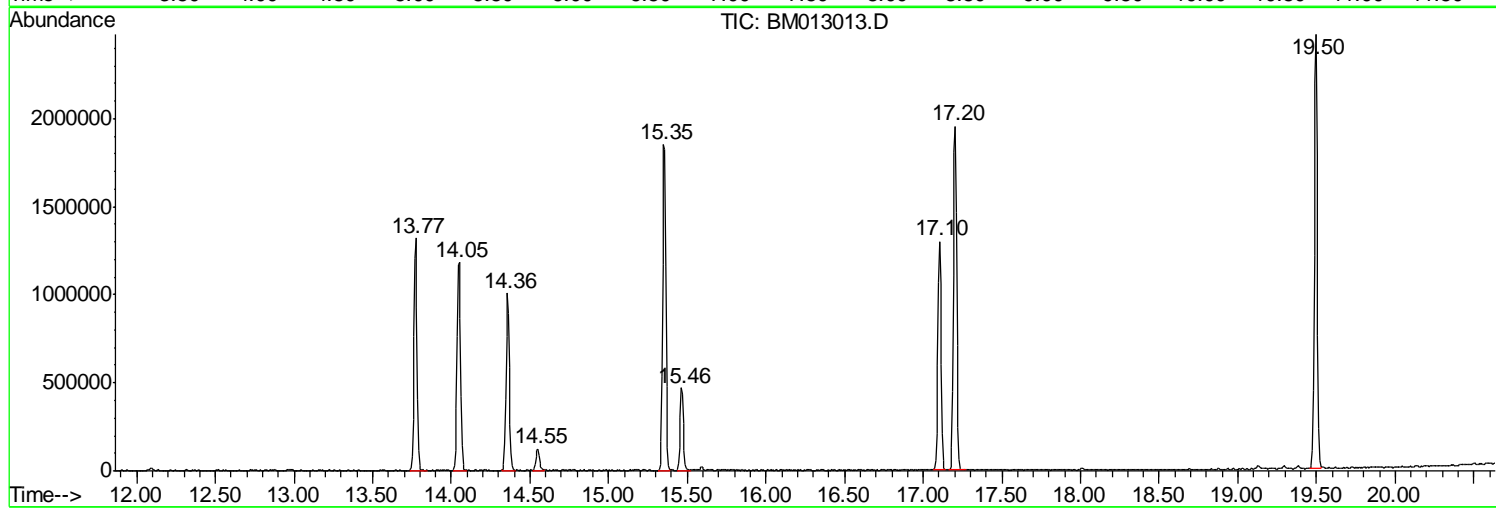
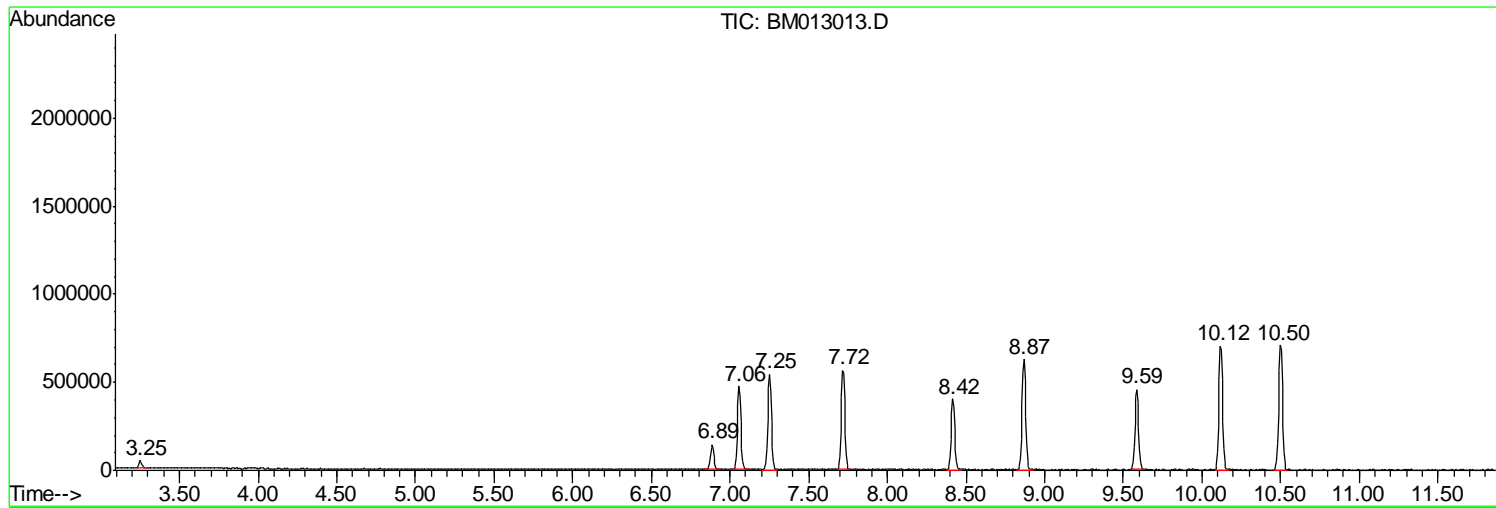
Sum of corrected areas: 31977359

Data Path : Z:\HPCHEM1\BNA M\DATA\BM111717\  
Data File : BM013013.D  
Acq On : 17 Nov 2017 23:13  
Operator : SJ/JU  
Sample : I6451-14  
Misc :  
ALS Vial : 23 Sample Multiplier: 1

Instrument :  
BNA\_M  
ClientSampleId :  
BE2X7

Quant Method : Z:\HPCHEM1\BNA M\METHODS\SOM-EPA-BM111617.M  
Quant Title : SVOA CALIBRATION

TIC Library : C:\DATABASE\NIST11.L  
TIC Integration Parameters: LSCINT.P



Data Path : Z:\HPCHEM1\BNA\_M\DATA\BM111717\  
Data File : BM013013.D  
Acq On : 17 Nov 2017 23:13  
Operator : SJ/JU  
Sample : I6451-14  
Misc :  
ALS Vial : 23 Sample Multiplier: 1

Instrument :  
BNA\_M  
ClientSampleId :  
BE2X7

Quant Method : Z:\HPCHEM1\BNA\_M\METHODS\SOM-EPA-BM111617.M  
Quant Title : SVOA CALIBRATION

TIC Library : C:\DATABASE\NIST11.L  
TIC Integration Parameters: LSCINT.P

No Library Search Compounds Detected

\*\*\*\*\*

Data Path : Z:\HPCHEM1\BNA\_M\DATA\BM111717\  
Data File : BM013013.D  
Acq On : 17 Nov 2017 23:13  
Operator : SJ/JU  
Sample : I6451-14  
Misc :  
ALS Vial : 23 Sample Multiplier: 1

Instrument :  
BNA\_M  
ClientSampleId :  
BE2X7

Quant Method : Z:\HPCHEM1\BNA\_M\METHODS\SOM-EPA-BM111617.M  
Quant Title : SVOA CALIBRATION

TIC Library : C:\DATABASE\NIST11.L  
TIC Integration Parameters: LSCINT.P

TIC Top Hit name	RT	EstConc	Units	Response	--Internal Standard--			
					#	RT	Resp	Conc

---