

Data Path : Z:\HPCHEM1\BNA M\DATA\BM111717\  
 Data File : BM013014.D  
 Acq On : 17 Nov 2017 23:48  
 Operator : SJ/JU  
 Sample : I6451-15  
 Misc :  
 ALS Vial : 24 Sample Multiplier: 1

Instrument :  
 BNA\_M  
 ClientSampled :  
 BE2X8

Integration Parameters: LSCINT.P  
 Integrator: RTE  
 Smoothing : OFF  
 Sampling : 1  
 Start Thrs: 0.2  
 Stop Thrs : 0

Filtering: 5  
 Min Area: 1 % of largest Peak  
 Max Peaks: 100  
 Peak Location: TOP

If leading or trailing edge < 100 prefer < Baseline drop else tangent >  
 Peak separation: 5

Method : Z:\HPCHEM1\BNA M\METHODS\SOM-EPA-BM111617.M  
 Title : SVOA CALIBRATION

Signal : TIC

peak #	R.T. min	first scan	max scan	last scan	PK TY	peak height	corr. area	corr. % max.	% of total
1	3.246	23	27	31	rVB	37443	44865	1.31%	0.143%
2	6.887	638	646	653	rBV	116858	183118	5.33%	0.584%
3	7.058	669	675	685	rBV	435922	653644	19.03%	2.086%
4	7.252	701	708	715	rBV	475362	733606	21.36%	2.341%
5	7.716	780	787	795	rBV	532075	843646	24.56%	2.692%
6	8.416	899	906	917	rBV2	340826	534854	15.57%	1.707%
7	8.534	921	926	933	rVB	26745	39738	1.16%	0.127%
8	8.869	976	983	992	rVB	575017	932238	27.14%	2.975%
9	9.587	1098	1105	1113	rBV	432951	689245	20.07%	2.199%
10	10.116	1185	1195	1203	rBV	649436	1066599	31.05%	3.404%
11	10.193	1203	1208	1213	rVB5	42873	62834	1.83%	0.201%
12	10.498	1252	1260	1269	rVB	672470	1135558	33.06%	3.624%
13	11.045	1347	1353	1358	rBV3	23782	37618	1.10%	0.120%
14	11.104	1358	1363	1369	rBV2	29129	46358	1.35%	0.148%
15	13.775	1809	1817	1823	rBV	1273401	1788610	52.07%	5.708%
16	14.045	1857	1863	1870	rBV	1249149	1824173	53.11%	5.821%
17	14.357	1908	1916	1925	rVB2	957739	1461834	42.56%	4.665%
18	14.545	1943	1948	1955	rBV2	105033	152299	4.43%	0.486%
19	15.351	2079	2085	2092	rBV	1744730	2527259	73.57%	8.065%
20	15.463	2098	2104	2111	rBV	448301	622552	18.12%	1.987%
21	17.104	2376	2383	2389	rBV2	1330960	1824753	53.12%	5.823%
22	17.204	2393	2400	2410	rBV	1982731	2803319	81.61%	8.946%
23	19.292	2751	2755	2760	rBV4	36236	46773	1.36%	0.149%
24	19.498	2784	2790	2797	rBV	2440698	3288871	95.75%	10.495%
25	21.286	3087	3094	3100	rBV	1890216	2278027	66.32%	7.269%
26	23.374	3442	3449	3458	rBV2	1820960	3434966	100.00%	10.961%
27	23.445	3459	3461	3466	rVV5	45044	72600	2.11%	0.232%
28	23.521	3466	3474	3484	rVB	1139527	2206866	64.25%	7.042%

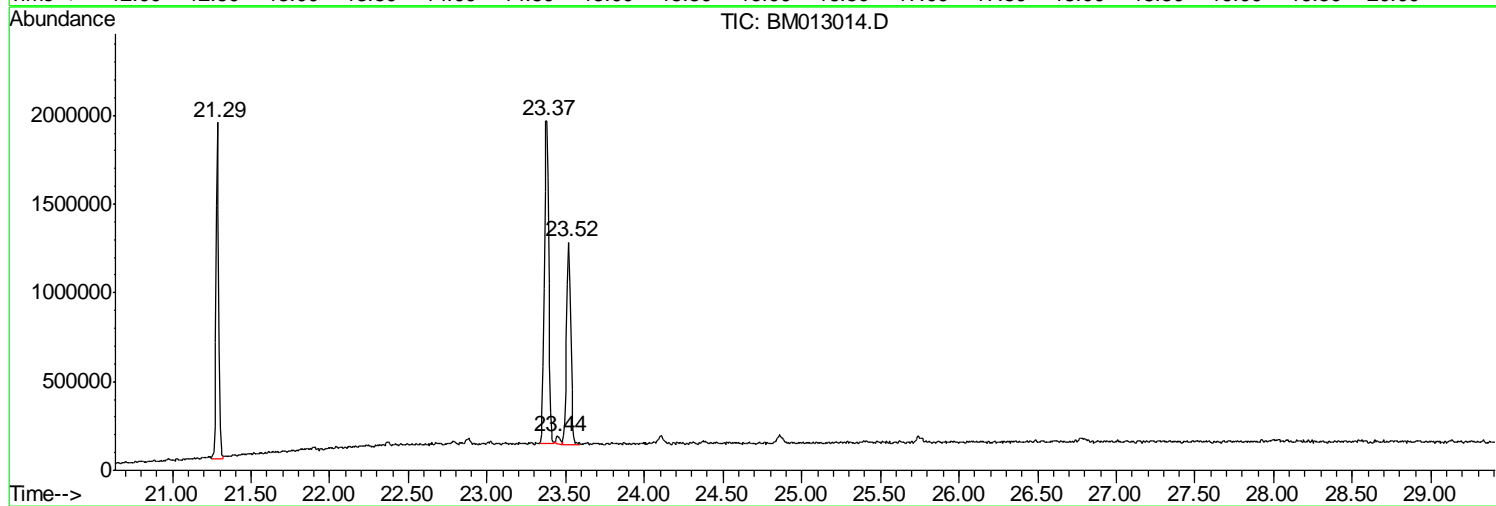
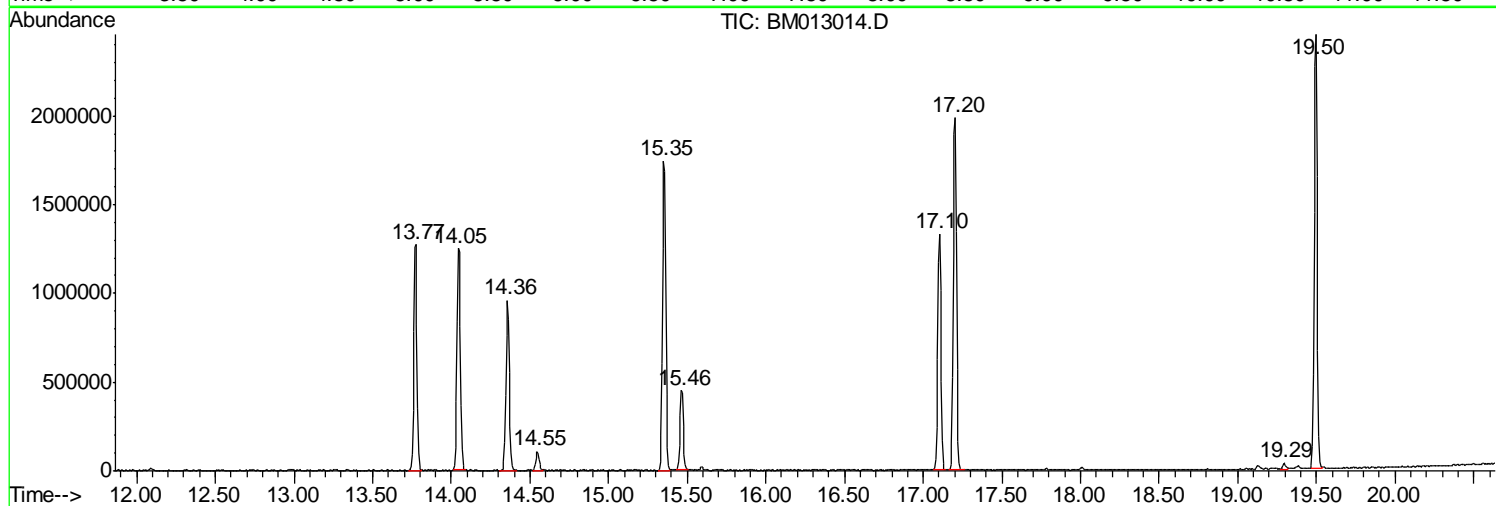
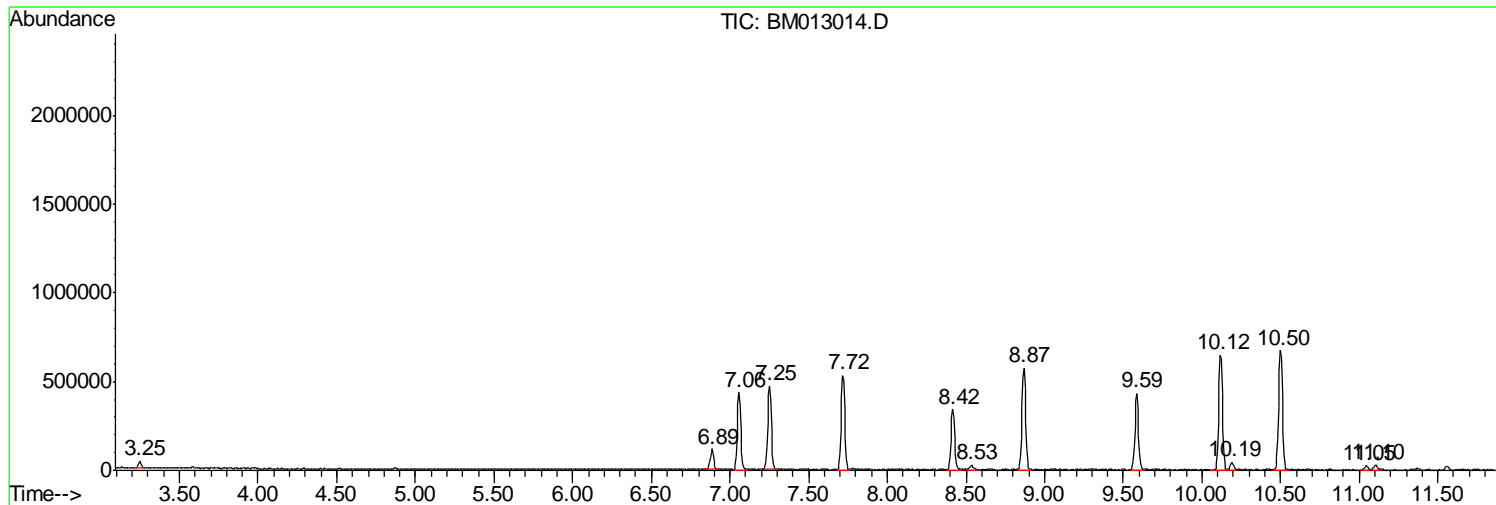
Sum of corrected areas: 31336823

Data Path : Z:\HPCHEM1\BNA M\DATA\BM111717\  
Data File : BM013014.D  
Acq On : 17 Nov 2017 23:48  
Operator : SJ/JU  
Sample : I6451-15  
Misc :  
ALS Vial : 24 Sample Multiplier: 1

Instrument :  
BNA\_M  
ClientSampled :  
BE2X8

Quant Method : Z:\HPCHEM1\BNA M\METHODS\SOM-EPA-BM111617.M  
Quant Title : SVOA CALIBRATION

TIC Library : C:\DATABASE\NIST11.L  
TIC Integration Parameters: LSCINT.P



Data Path : Z:\HPCHEM1\BNA\_M\DATA\BM111717\  
Data File : BM013014.D  
Acq On : 17 Nov 2017 23:48  
Operator : SJ/JU  
Sample : I6451-15  
Misc :  
ALS Vial : 24 Sample Multiplier: 1

Instrument :  
BNA\_M  
ClientSampleId :  
BE2X8

Quant Method : Z:\HPCHEM1\BNA\_M\METHODS\SOM-EPA-BM111617.M  
Quant Title : SVOA CALIBRATION

TIC Library : C:\DATABASE\NIST11.L  
TIC Integration Parameters: LSCINT.P

No Library Search Compounds Detected

\*\*\*\*\*

Data Path : Z:\HPCHEM1\BNA\_M\DATA\BM111717\  
Data File : BM013014.D  
Acq On : 17 Nov 2017 23:48  
Operator : SJ/JU  
Sample : I6451-15  
Misc :  
ALS Vial : 24 Sample Multiplier: 1

Instrument :  
BNA\_M  
ClientSampleId :  
BE2X8

Quant Method : Z:\HPCHEM1\BNA\_M\METHODS\SOM-EPA-BM111617.M  
Quant Title : SVOA CALIBRATION

TIC Library : C:\DATABASE\NIST11.L  
TIC Integration Parameters: LSCINT.P

TIC Top Hit name	RT	EstConc	Units	Response	--Internal Standard--			
					#	RT	Resp	Conc

---