

Data Path : Z:\HPCHEM1\BNA M\DATA\BM111717\  
 Data File : BM013025.D  
 Acq On : 18 Nov 2017 06:18  
 Operator : SJ/JU  
 Sample : I6451-10  
 Misc :  
 ALS Vial : 35 Sample Multiplier: 1

Instrument :  
 BNA\_M  
 ClientSampleId :  
 BE2X3

## Integration Parameters: LSCINT.P

Integrator: RTE  
 Smoothing : OFF  
 Sampling : 1  
 Start Thrs: 0.2  
 Stop Thrs : 0

Filtering: 5  
 Min Area: 1 % of largest Peak  
 Max Peaks: 100  
 Peak Location: TOP

If leading or trailing edge < 100 prefer < Baseline drop else tangent >  
 Peak separation: 5

Method : Z:\HPCHEM1\BNA M\METHODS\SOM-EPA-BM111617.M  
 Title : SVOA CALIBRATION

Signal : TIC

peak #	R.T. min	first scan	max scan	last scan	PK TY	peak height	corr. area	corr. % max.	% of total
1	3.969	142	150	159	rVB	655934	842416	15.77%	0.814%
2	5.069	330	337	347	rBV	1434356	2066157	38.68%	1.997%
3	5.257	362	369	378	rVB	1534555	2298353	43.03%	2.222%
4	5.387	385	391	400	rBV	3348510	5341143	100.00%	5.163%
5	5.463	400	404	410	rVB3	149229	236068	4.42%	0.228%
6	5.751	446	453	461	rBV	812680	1177772	22.05%	1.139%
7	6.222	525	533	539	rBV	358640	584196	10.94%	0.565%
8	6.398	554	563	573	rVB2	207038	468521	8.77%	0.453%
9	6.710	608	616	630	rVB	227618	438936	8.22%	0.424%
10	6.857	637	641	643	rVV	209543	304373	5.70%	0.294%
11	6.886	643	646	652	rVV2	210258	357398	6.69%	0.346%
12	7.057	669	675	680	rBV	599581	894699	16.75%	0.865%
13	7.110	680	684	688	rVV	221523	351093	6.57%	0.339%
14	7.251	702	708	718	rVB2	697974	1192189	22.32%	1.153%
15	7.369	722	728	733	rBV	496486	746190	13.97%	0.721%
16	7.428	733	738	743	rVB2	200216	305188	5.71%	0.295%
17	7.716	777	787	791	rBV	682875	1186632	22.22%	1.147%
18	7.833	801	807	816	rVB	255471	453761	8.50%	0.439%
19	7.922	816	822	827	rBV	334117	506021	9.47%	0.489%
20	8.086	841	850	856	rVB2	826144	1643303	30.77%	1.589%
21	8.357	885	896	901	rBV4	97753	210058	3.93%	0.203%
22	8.416	901	906	914	rVB	557579	907049	16.98%	0.877%
23	8.816	968	974	978	rBV	259400	411233	7.70%	0.398%
24	8.869	978	983	991	rVV	809310	1424790	26.68%	1.377%
25	8.945	991	996	1006	rVB4	267025	541788	10.14%	0.524%
26	9.039	1006	1012	1024	rVB	420666	690091	12.92%	0.667%
27	9.192	1033	1038	1046	rVB	205252	342402	6.41%	0.331%
28	9.333	1055	1062	1067	rVB	121255	228310	4.27%	0.221%
29	9.504	1079	1091	1093	rBV2	129132	263346	4.93%	0.255%
30	9.586	1099	1105	1110	rBV	633712	1017275	19.05%	0.983%
31	9.751	1125	1133	1137	rBV3	127606	210488	3.94%	0.203%
32	9.875	1149	1154	1156	rBV	152925	253148	4.74%	0.245%
33	9.916	1156	1161	1169	rVV6	361744	845809	15.84%	0.818%
34	9.986	1169	1173	1180	rVV3	220896	453483	8.49%	0.438%

Data Path : Z:\HPCHEM1\BNA M\DATA\BM111717\  
 Data File : BM013025.D  
 Acq On : 18 Nov 2017 06:18  
 Operator : SJ/JU  
 Sample : I6451-10  
 Misc :  
 ALS Vial : 35 Sample Multiplier: 1

Instrument :  
 BNA\_M  
 ClientSampleId :  
 BE2X3

## Integration Parameters: LSCINT.P

Integrator: RTE  
 Smoothing : OFF  
 Sampling : 1  
 Start Thrs: 0.2  
 Stop Thrs : 0

Filtering: 5  
 Min Area: 1 % of largest Peak  
 Max Peaks: 100  
 Peak Location: TOP

If leading or trailing edge < 100 prefer < Baseline drop else tangent >  
 Peak separation: 5

Method : Z:\HPCHEM1\BNA M\METHODS\SOM-EPA-BM111617.M  
 Title : SVOA CALIBRATION

35	10.122	1189	1196	1204	rBV	1011508	1694334	31.72%	1.638%
36	10.245	1212	1217	1225	rVV2	209909	405816	7.60%	0.392%
37	10.498	1252	1260	1264	rBV	890080	1514406	28.35%	1.464%
38	10.551	1264	1269	1277	rVB	1828618	3026848	56.67%	2.926%
39	10.669	1282	1289	1301	rVB4	146868	413842	7.75%	0.400%
40	10.898	1319	1328	1336	rVB3	315389	756602	14.17%	0.731%
41	11.104	1356	1363	1369	rBV	723153	1248262	23.37%	1.207%
42	11.474	1418	1426	1430	rBV2	150273	264157	4.95%	0.255%
43	11.845	1480	1489	1495	rBV	680095	1312086	24.57%	1.268%
44	12.163	1537	1543	1553	rVB2	392973	658778	12.33%	0.637%
45	12.333	1565	1572	1575	rVV4	98052	215902	4.04%	0.209%
46	12.386	1575	1581	1588	rVB	515213	873254	16.35%	0.844%
47	12.939	1670	1675	1680	rBV4	159589	240764	4.51%	0.233%
48	13.004	1680	1686	1687	rVV	589976	747428	13.99%	0.723%
49	13.027	1687	1690	1696	rVB	944568	1299834	24.34%	1.257%
50	13.410	1748	1755	1762	rVB3	119289	219073	4.10%	0.212%
51	13.774	1811	1817	1823	rVV	1891467	2775881	51.97%	2.684%
52	13.863	1823	1832	1837	rVV	2088361	4000504	74.90%	3.867%
53	13.910	1837	1840	1844	rVV2	149942	216061	4.05%	0.209%
54	14.051	1858	1864	1872	rVB	2063239	3069633	57.47%	2.968%
55	14.139	1872	1879	1882	rBV	154009	265459	4.97%	0.257%
56	14.357	1908	1916	1920	rBV2	1399165	2306806	43.19%	2.230%
57	14.398	1920	1923	1931	rVB2	389057	813876	15.24%	0.787%
58	14.562	1946	1951	1960	rVV	221873	372591	6.98%	0.360%
59	14.757	1979	1984	1989	rVB5	144136	224996	4.21%	0.218%
60	14.957	2014	2018	2028	rBV5	147622	291697	5.46%	0.282%
61	15.351	2079	2085	2093	rBV2	2595490	4194094	78.52%	4.055%
62	15.462	2097	2104	2113	rBV2	835486	1317692	24.67%	1.274%
63	15.651	2133	2136	2145	rVB4	157167	270422	5.06%	0.261%
64	15.862	2166	2172	2184	rBV5	493895	1146428	21.46%	1.108%
65	15.980	2186	2192	2196	rVV2	120926	252969	4.74%	0.245%
66	16.033	2196	2201	2207	rVV2	408984	827403	15.49%	0.800%
67	16.092	2207	2211	2222	rVB4	206831	444569	8.32%	0.430%
68	16.374	2254	2259	2262	rVV4	112846	212278	3.97%	0.205%
69	16.409	2262	2265	2272	rVB2	173712	230256	4.31%	0.223%
70	16.574	2289	2293	2298	rBV2	234623	348784	6.53%	0.337%
71	16.627	2298	2302	2311	rVB4	165682	352521	6.60%	0.341%

Data Path : Z:\HPCHEM1\BNA M\DATA\BM111717\  
 Data File : BM013025.D  
 Acq On : 18 Nov 2017 06:18  
 Operator : SJ/JU  
 Sample : I6451-10  
 Misc :  
 ALS Vial : 35 Sample Multiplier: 1

Instrument :  
 BNA\_M  
 ClientSampleId :  
 BE2X3

## Integration Parameters: LSCINT.P

Integrator: RTE  
 Smoothing : OFF  
 Sampling : 1  
 Start Thrs: 0.2  
 Stop Thrs : 0

Filtering: 5  
 Min Area: 1 % of largest Peak  
 Max Peaks: 100  
 Peak Location: TOP

If leading or trailing edge < 100 prefer < Baseline drop else tangent >  
 Peak separation: 5

Method : Z:\HPCHEM1\BNA M\METHODS\SOM-EPA-BM111617.M  
 Title : SVOA CALIBRATION

72	17.103	2375	2383	2392	rBV	1739914	2549929	47.74%	2.465%
73	17.198	2393	2399	2406	rVB	2883648	4192332	78.49%	4.053%
74	17.274	2408	2412	2421	rVV3	178416	275290	5.15%	0.266%
75	17.480	2439	2447	2453	rBV2	246854	434316	8.13%	0.420%
76	17.639	2470	2474	2485	rVV	548203	828215	15.51%	0.801%
77	17.780	2492	2498	2502	rBV	373622	548471	10.27%	0.530%
78	18.145	2555	2560	2567	rVB	443969	716721	13.42%	0.693%
79	18.245	2572	2577	2580	rVV2	331554	508019	9.51%	0.491%
80	18.298	2580	2586	2594	rVB	781996	1268703	23.75%	1.226%
81	19.003	2703	2706	2711	rVB2	198491	263179	4.93%	0.254%
82	19.121	2721	2726	2732	rBV2	132820	239763	4.49%	0.232%
83	19.233	2738	2745	2749	rVB4	380190	730301	13.67%	0.706%
84	19.497	2784	2790	2795	rBV	3386430	4738274	88.71%	4.581%
85	19.550	2795	2799	2804	rBV	1675676	2107275	39.45%	2.037%
86	19.715	2824	2827	2830	rBV	180617	220086	4.12%	0.213%
87	19.750	2830	2833	2836	rVB3	234696	287071	5.37%	0.278%
88	19.792	2836	2840	2844	rBV2	176716	250338	4.69%	0.242%
89	19.909	2856	2860	2863	rVB3	200125	244611	4.58%	0.236%
90	19.950	2863	2867	2872	rVB	257897	322892	6.05%	0.312%
91	20.003	2872	2876	2880	rBV3	189362	259614	4.86%	0.251%
92	20.233	2911	2915	2918	rVB2	158162	211975	3.97%	0.205%
93	20.544	2965	2968	2972	rBV2	226555	267600	5.01%	0.259%
94	20.627	2978	2982	2987	rVB	442437	531225	9.95%	0.514%
95	21.203	3077	3080	3083	rBV	323070	385573	7.22%	0.373%
96	21.239	3083	3086	3089	rVV	246174	274137	5.13%	0.265%
97	21.286	3089	3094	3103	rVB	2531186	3134827	58.69%	3.031%
98	21.415	3111	3116	3122	rBV	1249329	1654076	30.97%	1.599%
99	23.380	3442	3450	3457	rVB	2745834	4917919	92.08%	4.754%
100	23.521	3467	3474	3486	rVB	1581538	3058461	57.26%	2.957%

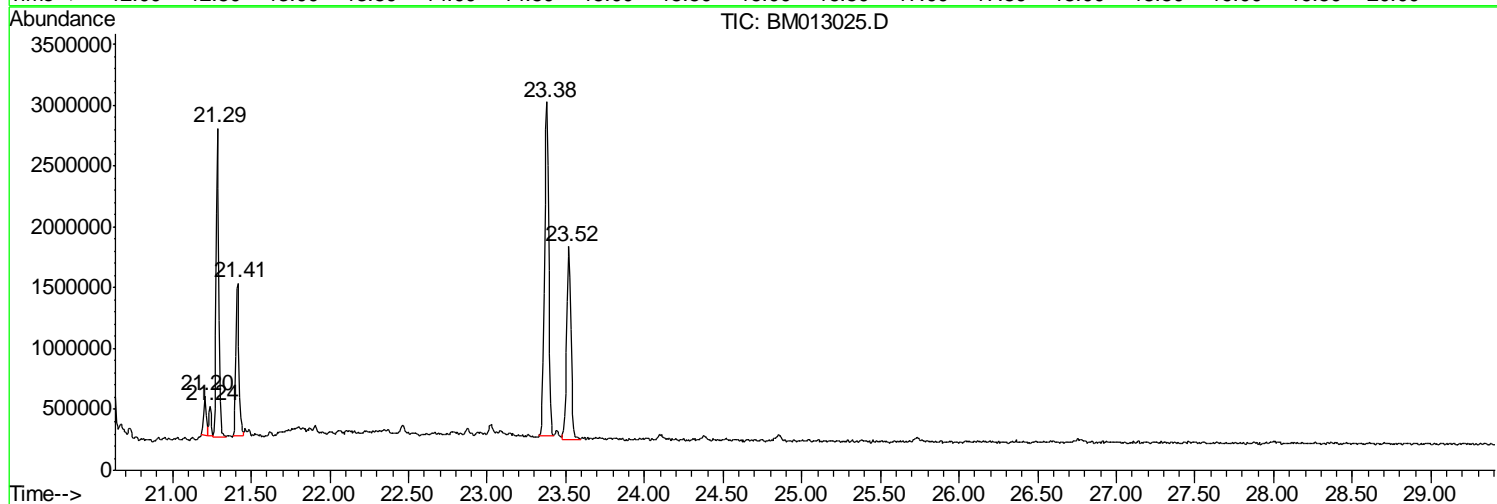
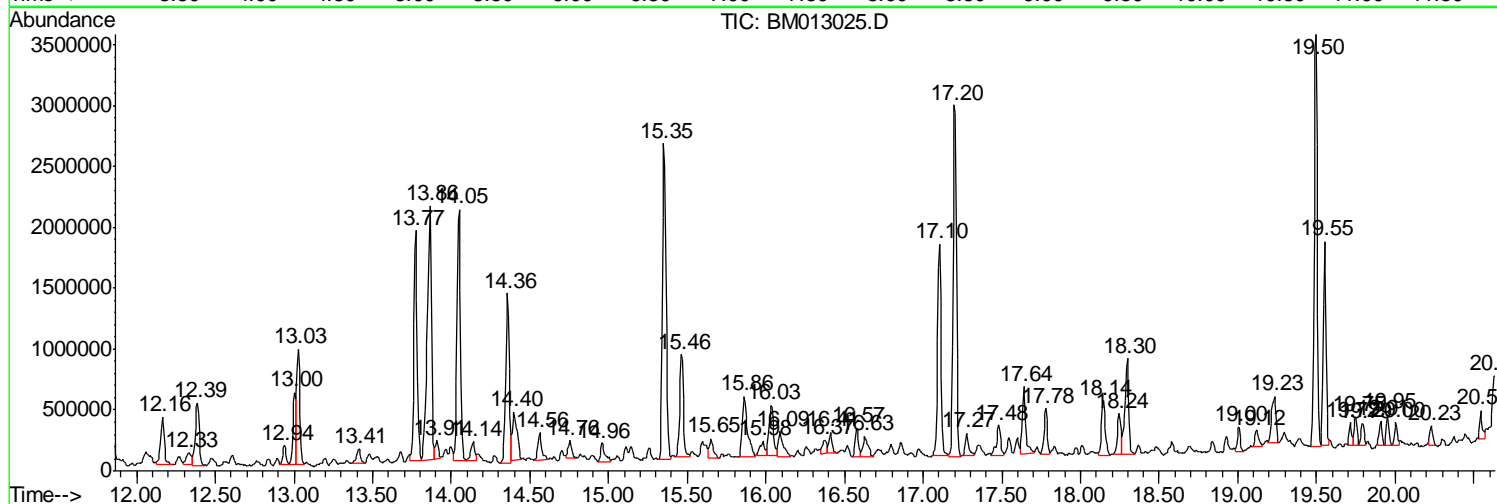
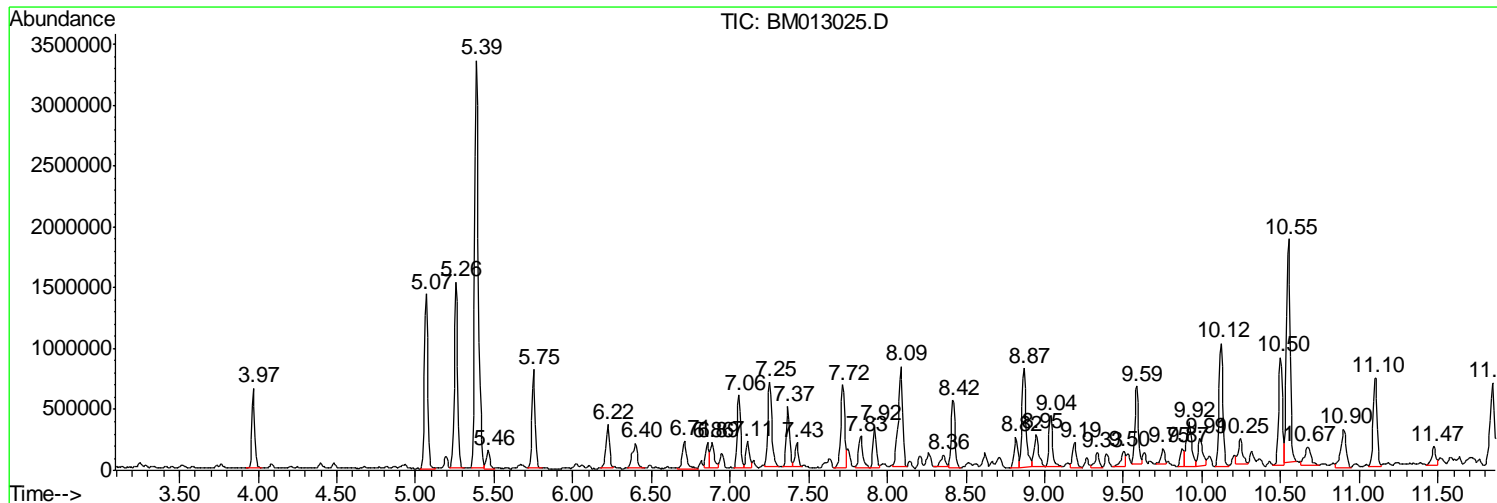
Sum of corrected areas: 103441178

Data Path : Z:\HPCHEM1\BNA M\DATA\BM111717\  
 Data File : BM013025.D  
 Acq On : 18 Nov 2017 06:18  
 Operator : SJ/JU  
 Sample : I6451-10  
 Misc :  
 ALS Vial : 35 Sample Multiplier: 1

Instrument :  
 BNA\_M  
 Client Sampled :  
 BE2X3

Quant Method : Z:\HPCHEM1\BNA M\METHODS\SOM-EPA-BM111617.M  
 Quant Title : SVOA CALIBRATION

TIC Library : C:\DATABASE\NIST11.L  
 TIC Integration Parameters: LSCINT.P



Data Path : Z:\HPCHEM1\BNA M\DATA\BM111717\  
 Data File : BM013025.D  
 Acq On : 18 Nov 2017 06:18  
 Operator : SJ/JU  
 Sample : I6451-10  
 Misc :  
 ALS Vial : 35 Sample Multiplier: 1

Instrument :  
 BNA\_M  
 ClientSampleID :  
 BE2X3

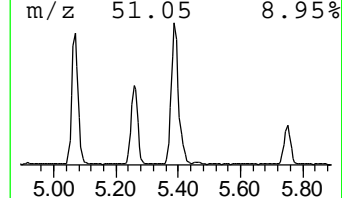
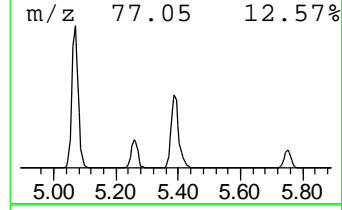
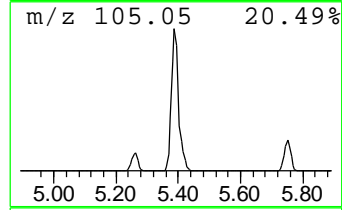
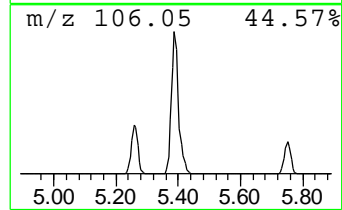
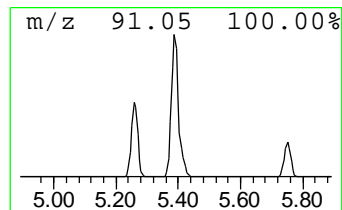
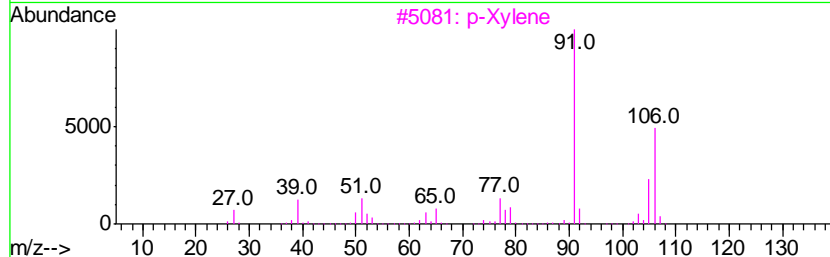
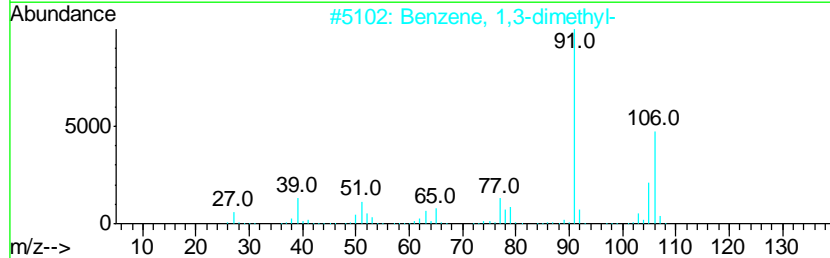
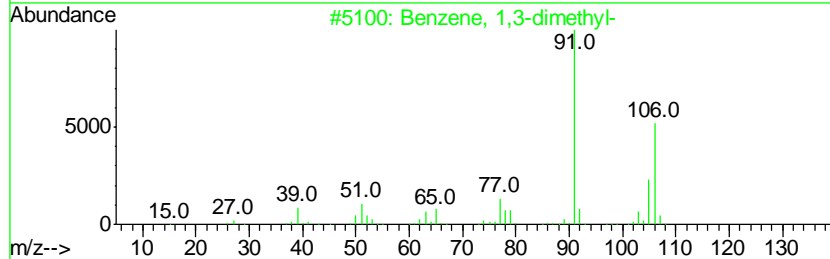
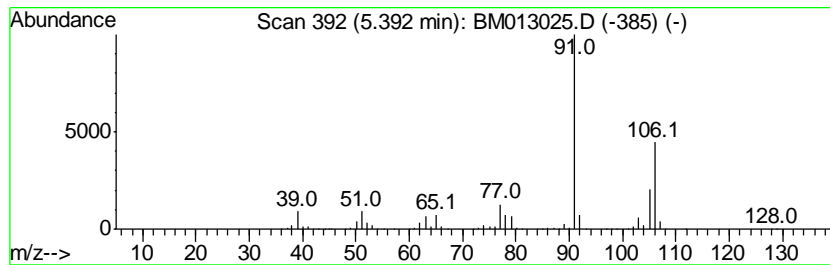
Quant Method : Z:\HPCHEM1\BNA M\METHODS\SOM-EPA-BM111617.M  
 Quant Title : SVOA CALIBRATION

TIC Library : C:\DATABASE\NIST11.L  
 TIC Integration Parameters: LSCINT.P

\*\*\*\*\*  
 Peak Number 4 Benzene, 1,3-dimethyl- Concentration Rank 1

R.T.	EstConc	Area	Relative to ISTD	R.T.
5.39	90.02 ng/ul	5341140	1,4-Dichlorobenzene-d4	7.72

Hit#	of	Tentative ID	MW	MolForm	CAS#	Qual
1	5	Benzene, 1,3-dimethyl-	106	C8H10	000108-38-3	97
2		Benzene, 1,3-dimethyl-	106	C8H10	000108-38-3	97
3		p-Xylene	106	C8H10	000106-42-3	97
4		o-Xylene	106	C8H10	000095-47-6	97
5		p-Xylene	106	C8H10	000106-42-3	95



Data Path : Z:\HPCHEM1\BNA M\DATA\BM111717\  
 Data File : BM013025.D  
 Acq On : 18 Nov 2017 06:18  
 Operator : SJ/JU  
 Sample : I6451-10  
 Misc :  
 ALS Vial : 35 Sample Multiplier: 1

Instrument :  
 BNA\_M  
 ClientSampleId :  
 BE2X3

Quant Method : Z:\HPCHEM1\BNA M\METHODS\SOM-EPA-BM111617.M  
 Quant Title : SVOA CALIBRATION

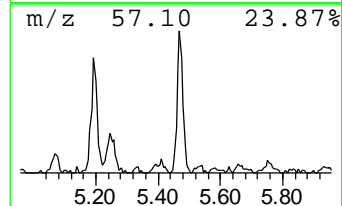
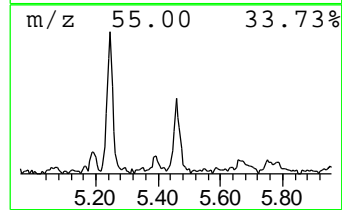
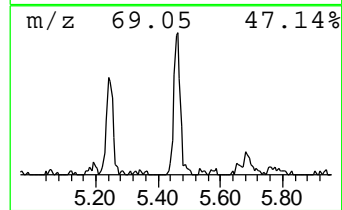
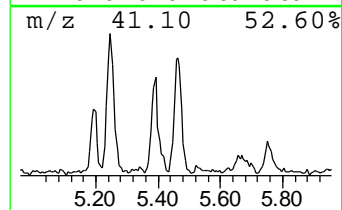
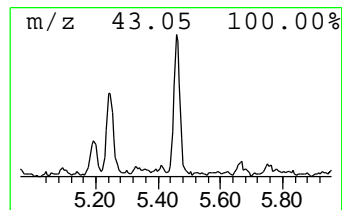
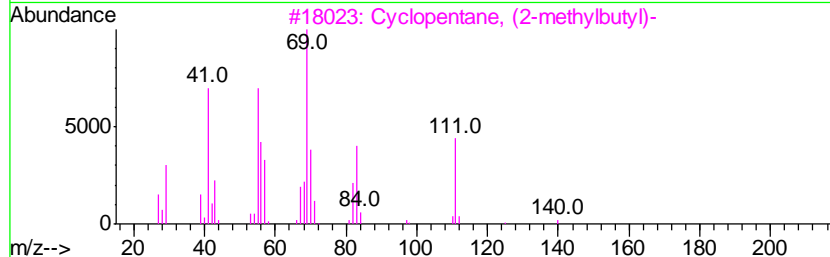
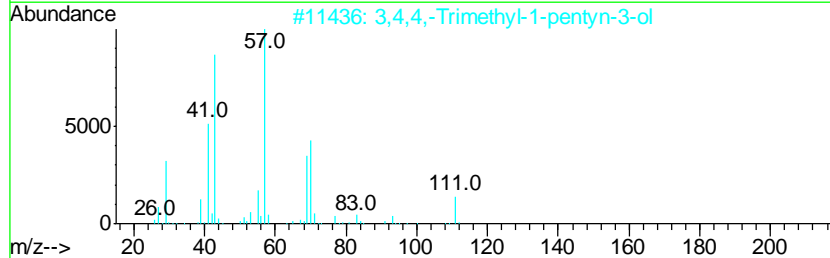
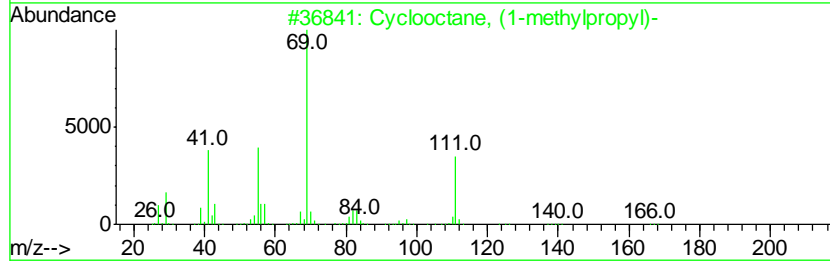
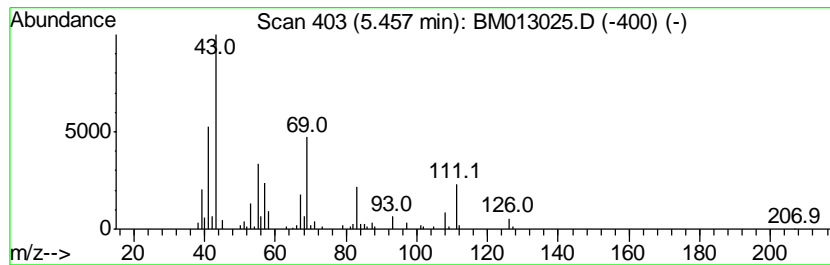
TIC Library : C:\DATABASE\NIST11.L  
 TIC Integration Parameters: LSCINT.P

\*\*\*\*\*  
 Peak Number 5 (DEL) Alkane: Cyclic5.46 Concentration Rank 39

R.T.	EstConc	Area	Relative to ISTD	R.T.
5.46	3.98 ng/ul	236068	1,4-Dichlorobenzene-d4	7.72

Hit#	of	Tentative ID	MW	MolForm	CAS#	Qual
1	5	Cyclooctane, (1-methylpropyl)-	168	C12H24	016538-89-9	38
2		3,4,4,-Trimethyl-1-pentyn-3-ol	126	C8H14O	000993-53-3	38
3		Cyclopentane, (2-methylbutyl)-	140	C10H20	053366-38-4	32
4		endo-2-Methyl-2-norbornanol	126	C8H14O	003212-16-6	27
5		Cyclooctanemethanol	142	C9H18O	003637-63-6	25



Data Path : Z:\HPCHEM1\BNA M\DATA\BM111717\  
 Data File : BM013025.D  
 Acq On : 18 Nov 2017 06:18  
 Operator : SJ/JU  
 Sample : I6451-10  
 Misc :  
 ALS Vial : 35 Sample Multiplier: 1

Instrument :  
 BNA\_M  
 ClientSampleId :  
 BE2X3

Quant Method : Z:\HPCHEM1\BNA M\METHODS\SOM-EPA-BM111617.M  
 Quant Title : SVOA CALIBRATION

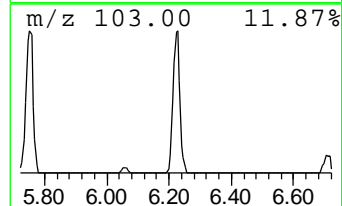
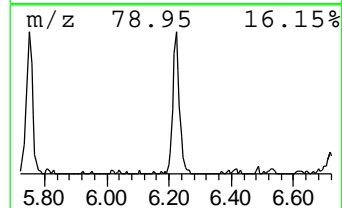
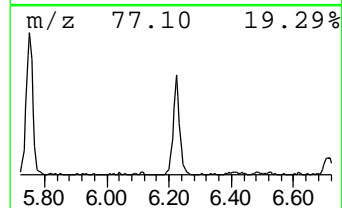
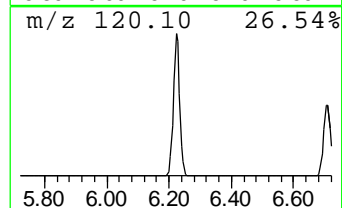
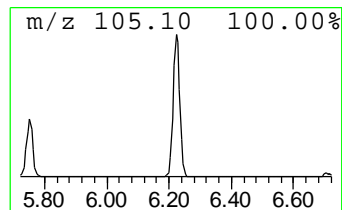
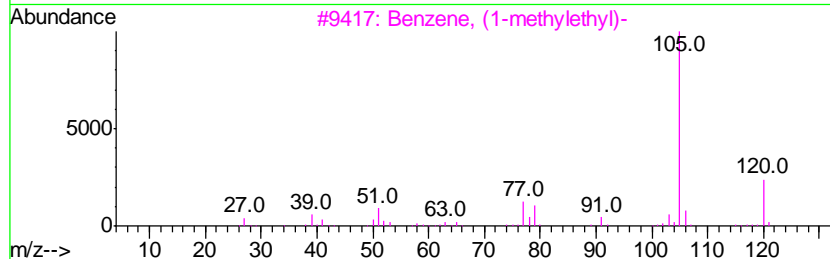
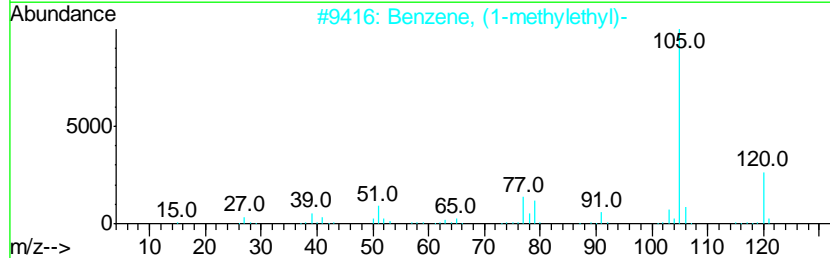
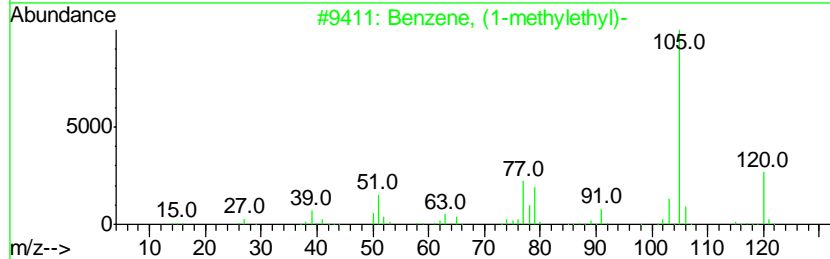
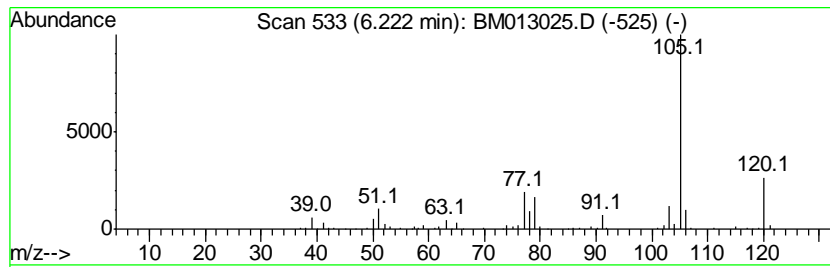
TIC Library : C:\DATABASE\NIST11.L  
 TIC Integration Parameters: LSCINT.P

\*\*\*\*\*  
 Peak Number 7 Benzene, (1-methylethyl)- Concentration Rank 19

R.T.	EstConc	Area	Relative to ISTD	R.T.
6.22	9.85 ng/ul	584196	1,4-Dichlorobenzene-d4	7.72

Hit#	of	Tentative ID	MW	MolForm	CAS#	Qual
1	5	Benzene, (1-methylethyl)-	120	C9H12	000098-82-8	97
2		Benzene, (1-methylethyl)-	120	C9H12	000098-82-8	91
3		Benzene, (1-methylethyl)-	120	C9H12	000098-82-8	91
4		Benzene, 1-ethyl-2-methyl-	120	C9H12	000611-14-3	87
5		Benzene, 1,2,3-trimethyl-	120	C9H12	000526-73-8	87



Data Path : Z:\HPCHEM1\BNA M\DATA\BM111717\  
 Data File : BM013025.D  
 Acq On : 18 Nov 2017 06:18  
 Operator : SJ/JU  
 Sample : I6451-10  
 Misc :  
 ALS Vial : 35 Sample Multiplier: 1

Instrument :  
 BNA\_M  
 ClientSampled :  
 BE2X3

Quant Method : Z:\HPCHEM1\BNA M\METHODS\SOM-EPA-BM111617.M  
 Quant Title : SVOA CALIBRATION

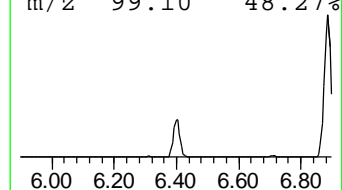
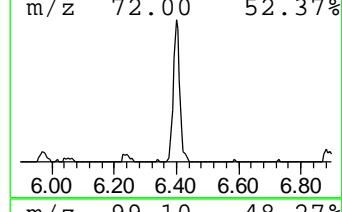
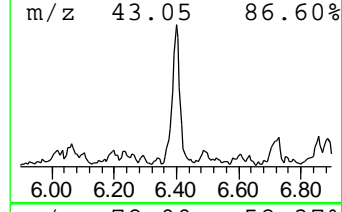
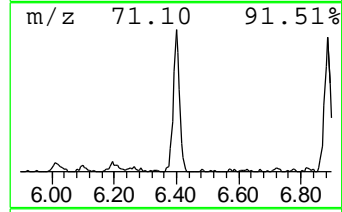
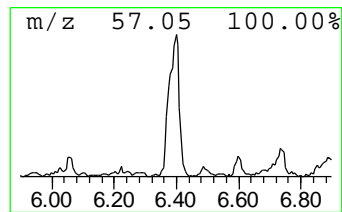
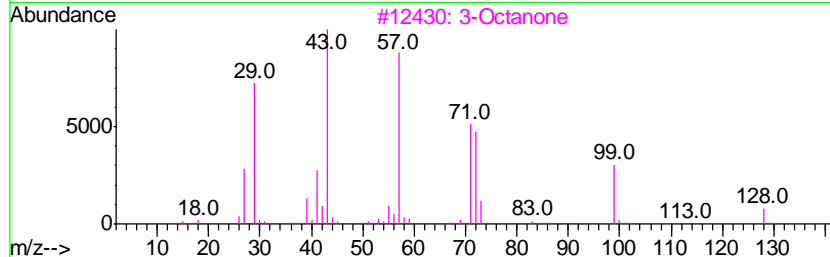
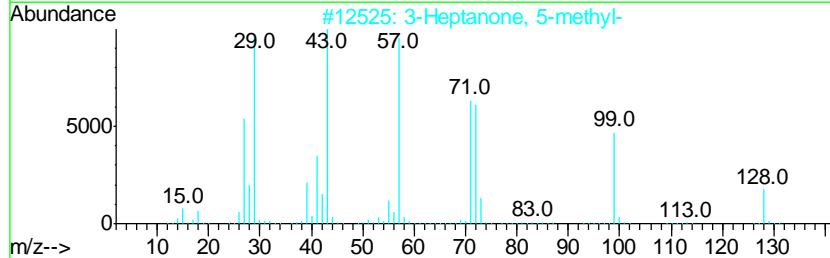
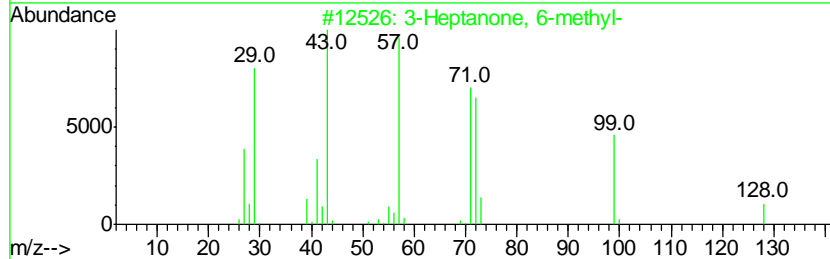
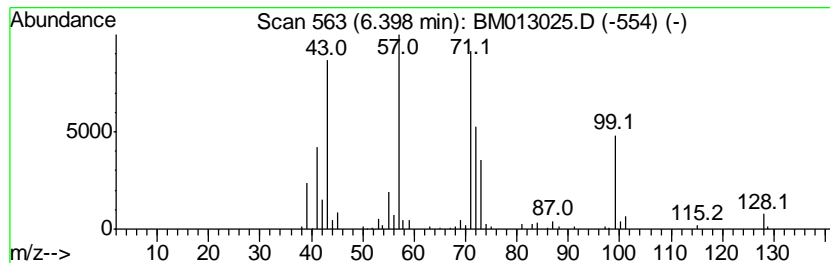
TIC Library : C:\DATABASE\NIST11.L  
 TIC Integration Parameters: LSCINT.P

\*\*\*\*\*  
 Peak Number 8 3-Heptanone, 6-methyl- Concentration Rank 23

R.T.	EstConc	Area	Relative to ISTD	R.T.
6.40	7.90 ng/ul	468521	1,4-Dichlorobenzene-d4	7.72

Hit#	of	Tentative ID	MW	MolForm	CAS#	Qual
1	5	3-Heptanone, 6-methyl-	128	C8H16O	000624-42-0	58
2		3-Heptanone, 5-methyl-	128	C8H16O	000541-85-5	50
3		3-Octanone	128	C8H16O	000106-68-3	49
4		Hexanoic acid, 1,1-dimethylpropy...	186	C11H22O2	116423-69-9	47
5		3-Octanone	128	C8H16O	000106-68-3	46





Data Path : Z:\HPCHEM1\BNA M\DATA\BM111717\  
 Data File : BM013025.D  
 Acq On : 18 Nov 2017 06:18  
 Operator : SJ/JU  
 Sample : I6451-10  
 Misc :  
 ALS Vial : 35 Sample Multiplier: 1

Instrument :  
 BNA\_M  
 ClientSampled :  
 BE2X3

Quant Method : Z:\HPCHEM1\BNA M\METHODS\SOM-EPA-BM111617.M  
 Quant Title : SVOA CALIBRATION

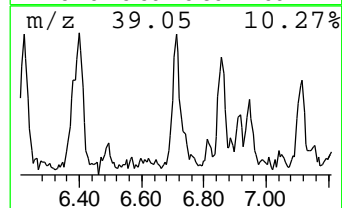
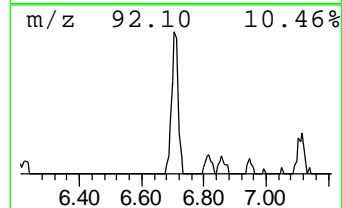
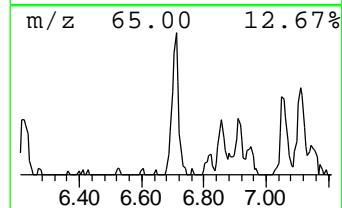
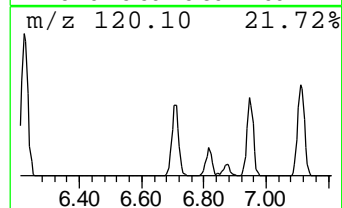
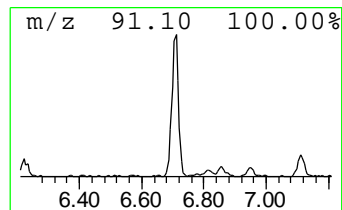
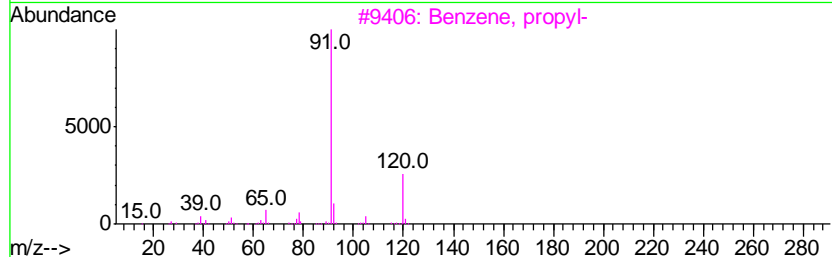
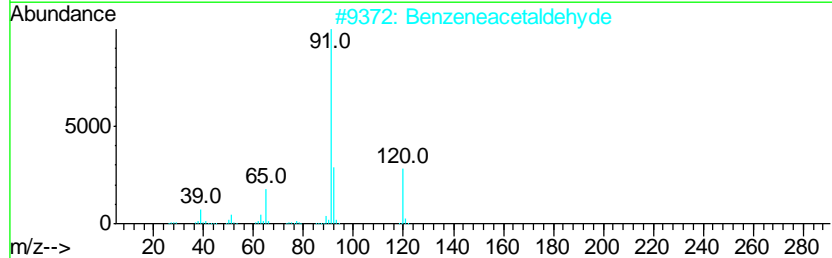
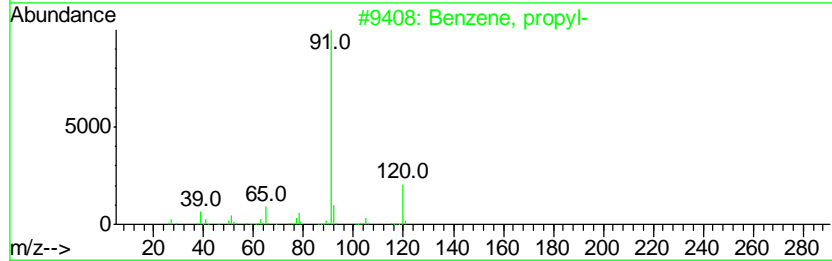
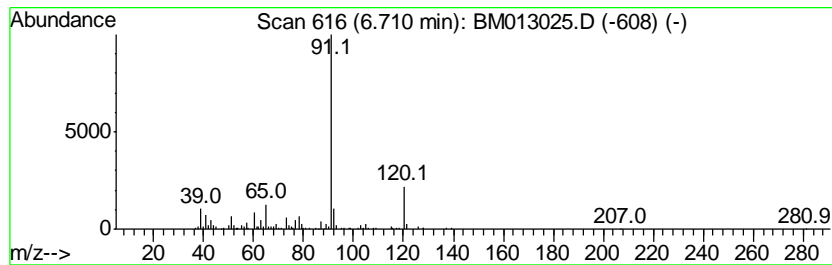
TIC Library : C:\DATABASE\NIST11.L  
 TIC Integration Parameters: LSCINT.P

\*\*\*\*\*  
 Peak Number 9 Benzene, propyl- Concentration Rank 25

R.T.	EstConc	Area	Relative to ISTD	R.T.
6.71	7.40 ng/ul	438936	1,4-Dichlorobenzene-d4	7.72

Hit#	of	Tentative ID	MW	MolForm	CAS#	Qual
1	5	Benzene, propyl-	120	C9H12	000103-65-1	70
2		Benzeneacetaldehyde	120	C8H8O	000122-78-1	60
3		Benzene, propyl-	120	C9H12	000103-65-1	58
4		N-Benzyl-2-phenethylamine	211	C15H17N	003647-71-0	53
5		Ethanol, 2-[(phenylmethyl)amino]-	151	C9H13NO	000104-63-2	53



Data Path : Z:\HPCHEM1\BNA M\DATA\BM111717\  
 Data File : BM013025.D  
 Acq On : 18 Nov 2017 06:18  
 Operator : SJ/JU  
 Sample : I6451-10  
 Misc :  
 ALS Vial : 35 Sample Multiplier: 1

Instrument :  
 BNA\_M  
 ClientSampleId :  
 BE2X3

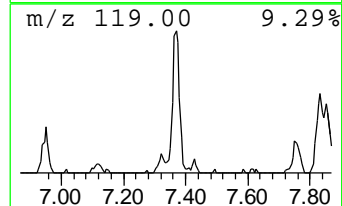
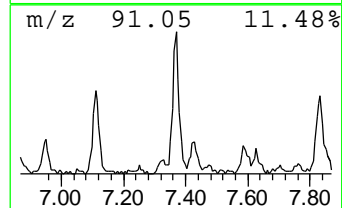
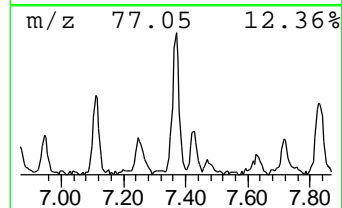
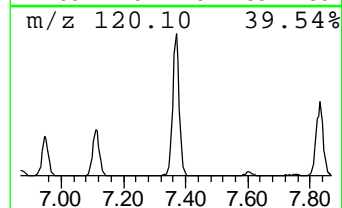
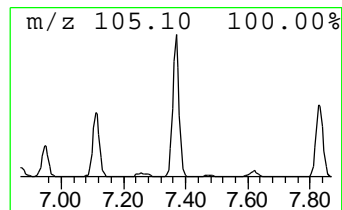
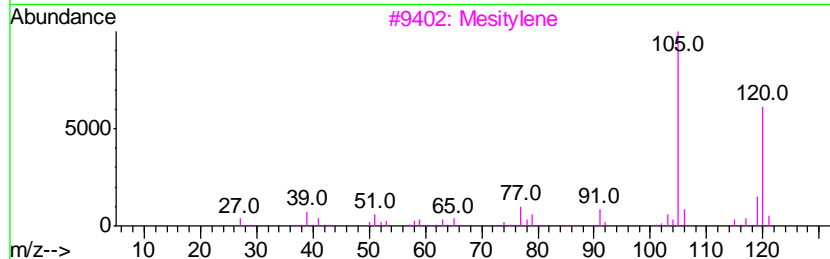
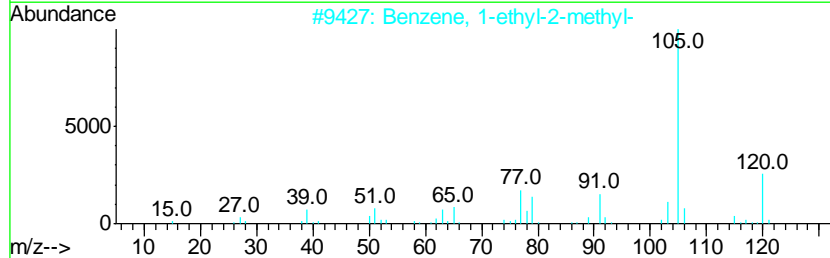
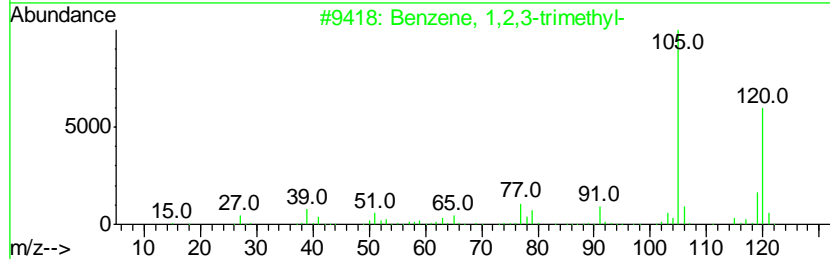
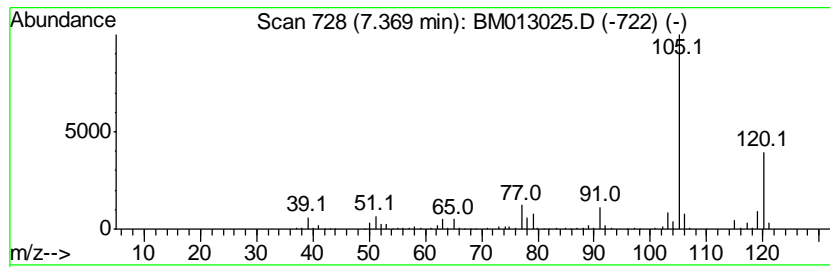
Quant Method : Z:\HPCHEM1\BNA M\METHODS\SOM-EPA-BM111617.M  
 Quant Title : SVOA CALIBRATION

TIC Library : C:\DATABASE\NIST11.L  
 TIC Integration Parameters: LSCINT.P

\*\*\*\*\*  
 Peak Number 10 Benzene, 1,2,3-trimethyl- Concentration Rank 11

R.T.	EstConc	Area	Relative to ISTD	R.T.
7.37	12.58 ng/ul	746190	1,4-Dichlorobenzene-d4	7.72

Hit#	of	Tentative ID	MW	MolForm	CAS#	Qual
1	5	Benzene, 1,2,3-trimethyl-	120	C9H12	000526-73-8	95
2		Benzene, 1-ethyl-2-methyl-	120	C9H12	000611-14-3	93
3		Mesitylene	120	C9H12	000108-67-8	91
4		Benzene, 1,2,4-trimethyl-	120	C9H12	000095-63-6	91
5		Mesitylene	120	C9H12	000108-67-8	91



Data Path : Z:\HPCHEM1\BNA M\DATA\BM111717\  
 Data File : BM013025.D  
 Acq On : 18 Nov 2017 06:18  
 Operator : SJ/JU  
 Sample : I6451-10  
 Misc :  
 ALS Vial : 35 Sample Multiplier: 1

Instrument :  
 BNA\_M  
 ClientSampleID :  
 BE2X3

Quant Method : Z:\HPCHEM1\BNA M\METHODS\SOM-EPA-BM111617.M  
 Quant Title : SVOA CALIBRATION

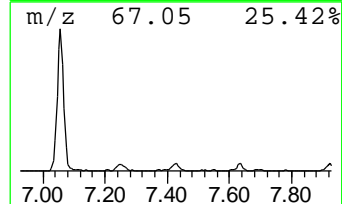
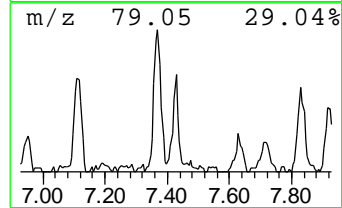
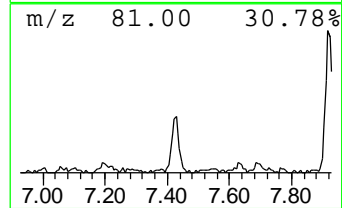
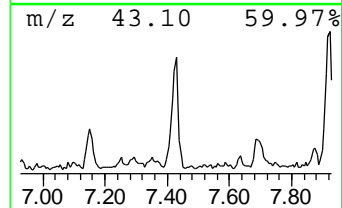
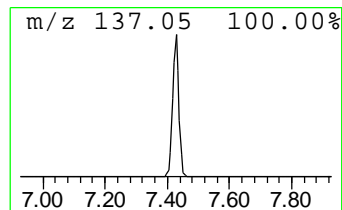
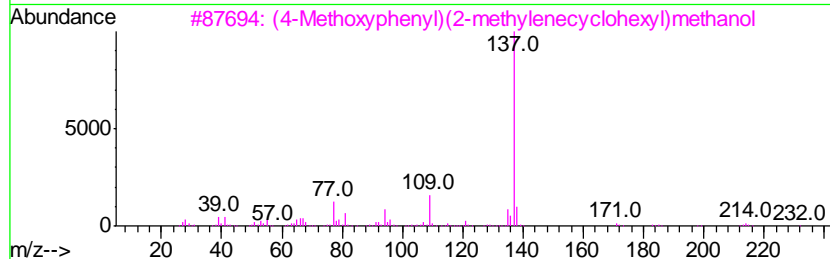
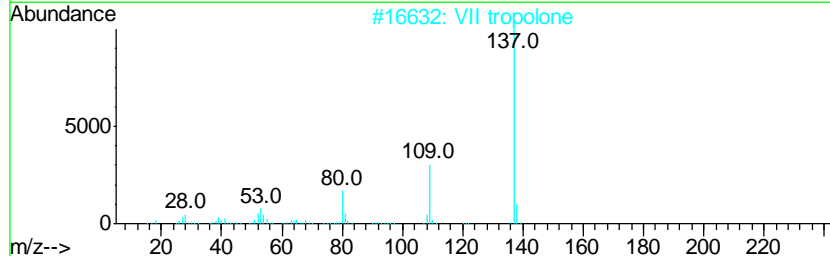
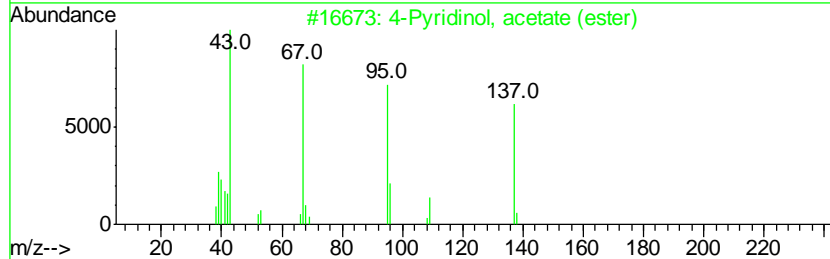
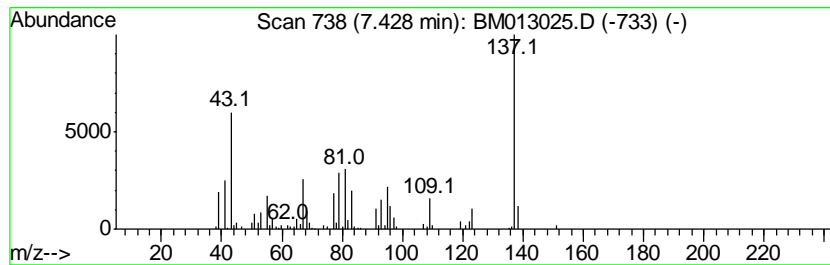
TIC Library : C:\DATABASE\NIST11.L  
 TIC Integration Parameters: LSCINT.P

\*\*\*\*\*  
 Peak Number 11 unknown-01 Concentration Rank 34

R.T.	EstConc	Area	Relative to ISTD	R.T.
7.43	5.14 ng/ul	305188	1,4-Dichlorobenzene-d4	7.72

Hit#	of	Tentative ID	MW	MolForm	CAS#	Qual
1	5	4-Pyridinol, acetate (ester)	137	C7H7NO2	014210-20-9	38
2		VII tropolone	137	C7H7NO2	007021-46-7	35
3		(4-Methoxyphenyl)(2-methylenecyclohexyl)methanol	232	C15H20O2	1000191-91-2	32
4		4,5-Heptadien-2-one, 3,3,6-trimethyl-2-oxo-	152	C10H16O	081250-41-1	25
5		2,4-Dihydroxyphenylbenzyl ketone	228	C14H12O3	003669-41-8	25



Data Path : Z:\HPCHEM1\BNA M\DATA\BM111717\  
 Data File : BM013025.D  
 Acq On : 18 Nov 2017 06:18  
 Operator : SJ/JU  
 Sample : I6451-10  
 Misc :  
 ALS Vial : 35 Sample Multiplier: 1

Instrument :  
 BNA\_M  
 ClientSampled :  
 BE2X3

Quant Method : Z:\HPCHEM1\BNA M\METHODS\SOM-EPA-BM111617.M  
 Quant Title : SVOA CALIBRATION

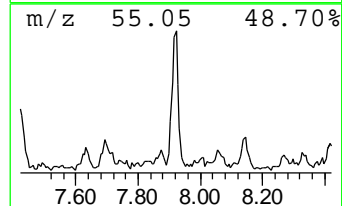
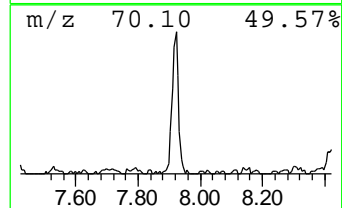
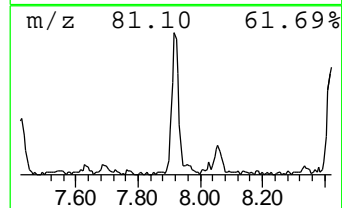
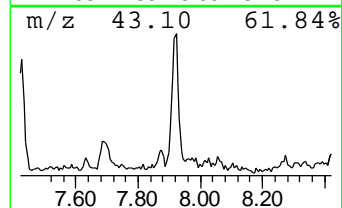
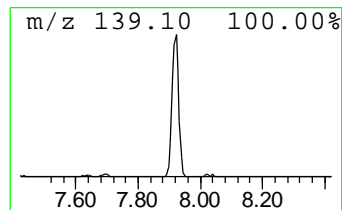
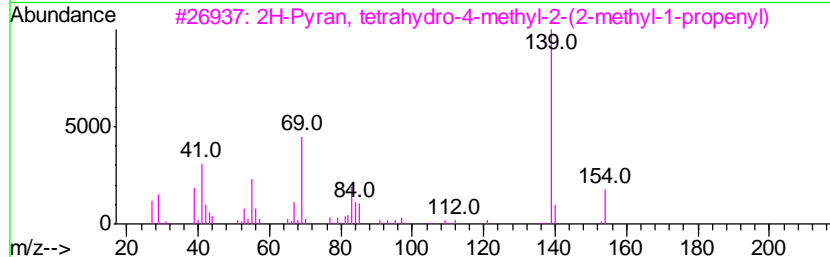
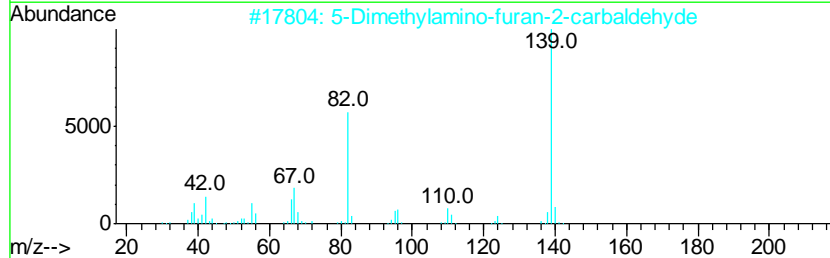
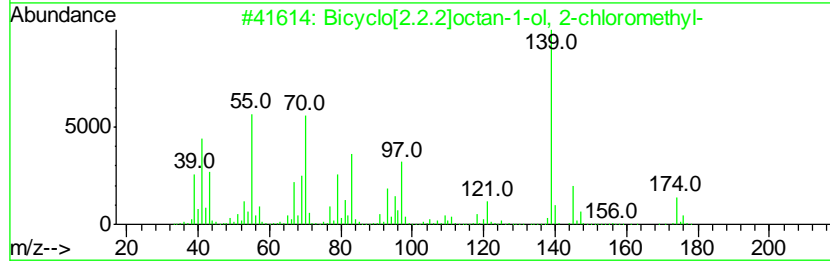
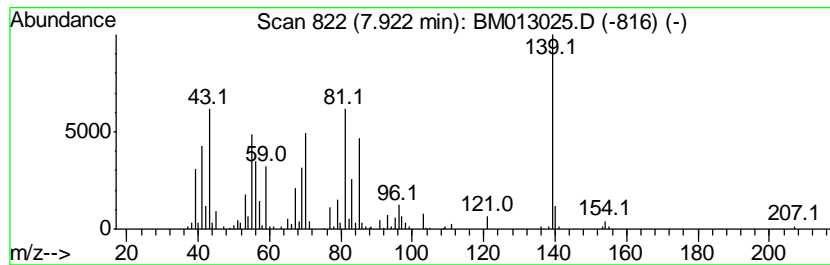
TIC Library : C:\DATABASE\NIST11.L  
 TIC Integration Parameters: LSCINT.P

\*\*\*\*\*  
 Peak Number 13 unknown-02 Concentration Rank 22

R.T.	EstConc	Area	Relative to ISTD	R.T.
7.92	8.53 ng/ul	506021	1,4-Dichlorobenzene-d4	7.72

Hit#	of	Tentative ID	MW	MolForm	CAS#	Qual
1	5	Bicyclo[2.2.2]octan-1-ol, 2-chlo...	174	C9H15ClO	274689-99-5	40
2		5-Dimethylamino-furan-2-carbalde...	139	C7H9NO2	1000317-69-8	35
3		2H-Pyran, tetrahydro-4-methyl-2-...	154	C10H18O	016409-43-1	32
4		2-Propanone, (1-methylethyl)(2-p...	154	C9H18N2	110213-09-7	32
5		Pyrithyldione	167	C9H13NO2	000077-04-3	32



Data Path : Z:\HPCHEM1\BNA M\DATA\BM111717\  
 Data File : BM013025.D  
 Acq On : 18 Nov 2017 06:18  
 Operator : SJ/JU  
 Sample : I6451-10  
 Misc :  
 ALS Vial : 35 Sample Multiplier: 1

Instrument :  
 BNA\_M  
 ClientSampleID :  
 BE2X3

Quant Method : Z:\HPCHEM1\BNA M\METHODS\SOM-EPA-BM111617.M  
 Quant Title : SVOA CALIBRATION

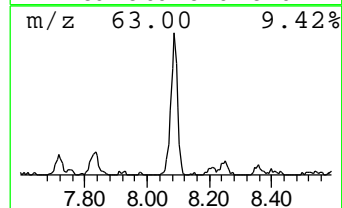
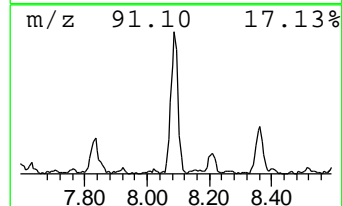
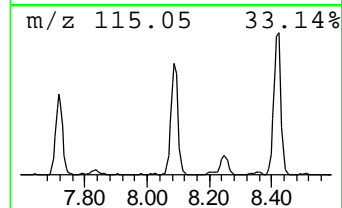
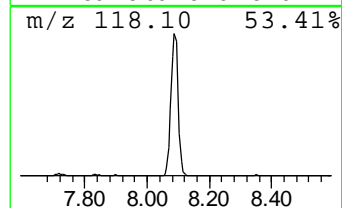
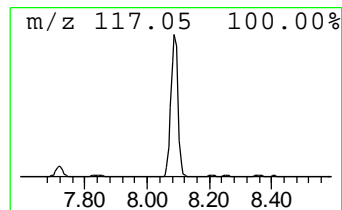
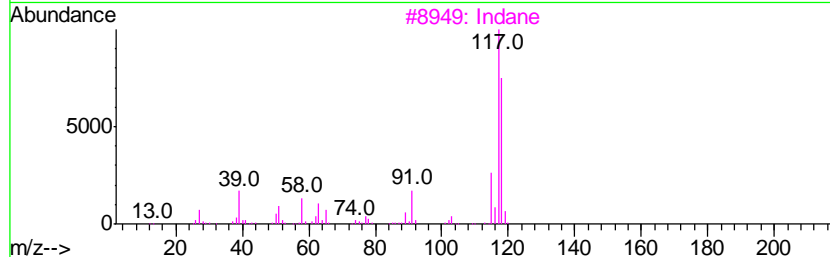
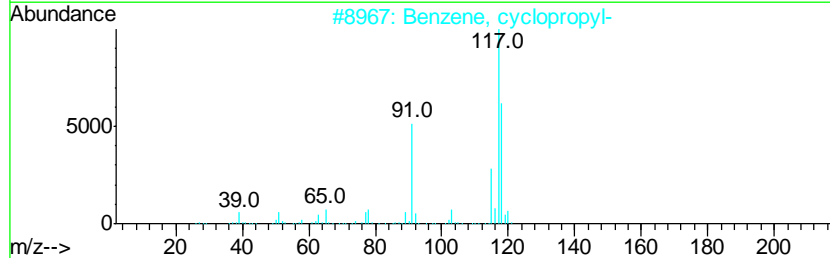
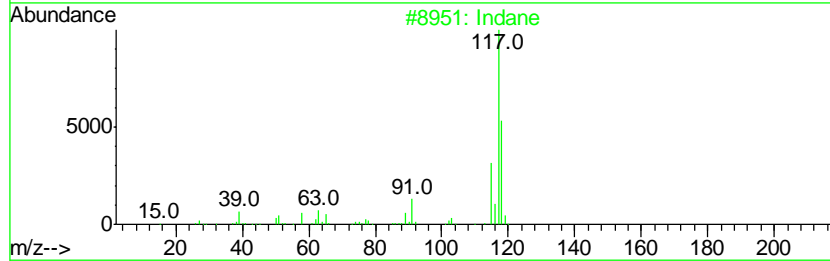
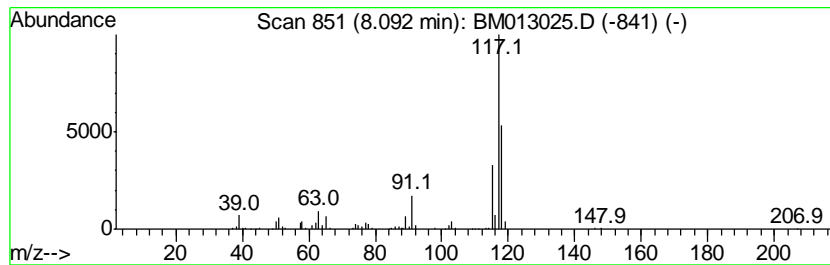
TIC Library : C:\DATABASE\NIST11.L  
 TIC Integration Parameters: LSCINT.P

\*\*\*\*\*  
 Peak Number 14 Indane Concentration Rank 5

R.T.	EstConc	Area	Relative to ISTD	R.T.
8.09	27.70 ng/ul	1643300	1,4-Dichlorobenzene-d4	7.72

Hit#	of	Tentative ID	MW	MolForm	CAS#	Qual
1	5	Indane	118	C9H10	000496-11-7	87
2		Benzene, cyclopropyl-	118	C9H10	000873-49-4	64
3		Indane	118	C9H10	000496-11-7	64
4		Tetracyclo[3.3.1.0(2,8).0(4,6)]-...	118	C9H10	1000191-13-7	59
5		Indane	118	C9H10	000496-11-7	53



Data Path : Z:\HPCHEM1\BNA M\DATA\BM111717\  
 Data File : BM013025.D  
 Acq On : 18 Nov 2017 06:18  
 Operator : SJ/JU  
 Sample : I6451-10  
 Misc :  
 ALS Vial : 35 Sample Multiplier: 1

Instrument :  
 BNA\_M  
 ClientSampleId :  
 BE2X3

Quant Method : Z:\HPCHEM1\BNA M\METHODS\SOM-EPA-BM111617.M  
 Quant Title : SVOA CALIBRATION

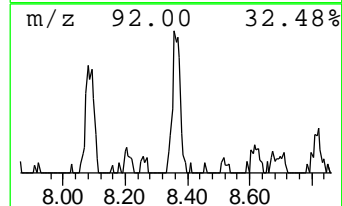
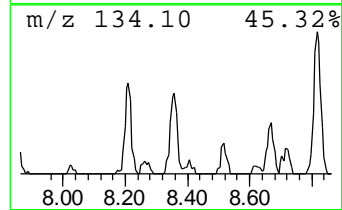
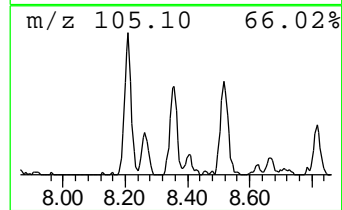
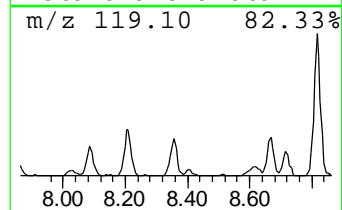
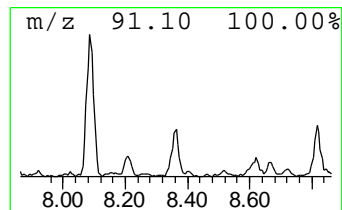
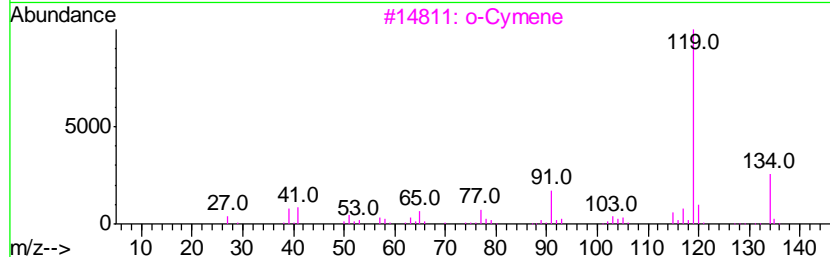
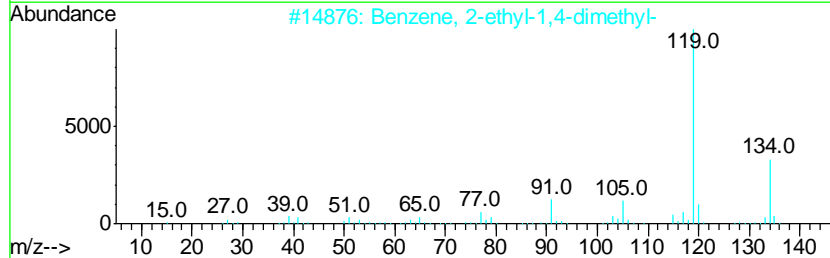
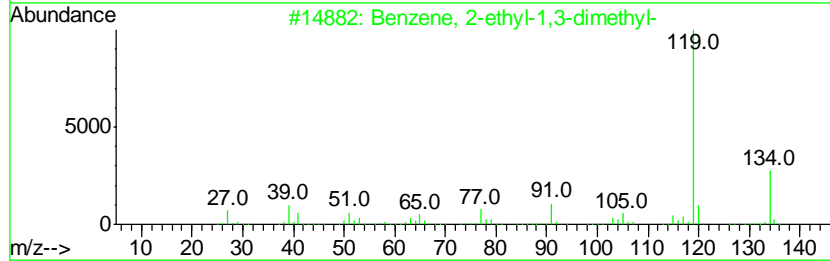
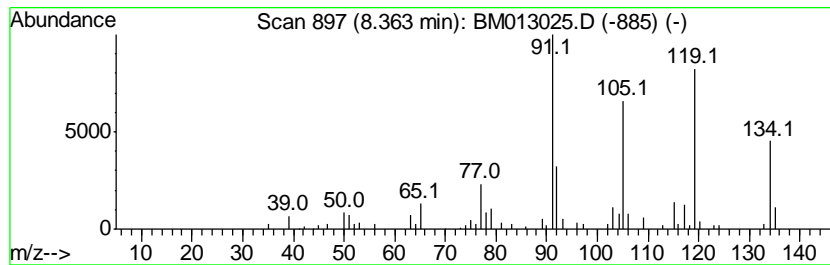
TIC Library : C:\DATABASE\NIST11.L  
 TIC Integration Parameters: LSCINT.P

\*\*\*\*\*  
 Peak Number 15 Benzene, 2-ethyl-1,3-dimethyl- Concentration Rank 40

R.T.	EstConc	Area	Relative to ISTD	R.T.
8.36	3.54 ng/ul	210058	1,4-Dichlorobenzene-d4	7.72

Hit#	of	Tentative ID	MW	MolForm	CAS#	Qual
1	5	Benzene, 2-ethyl-1,3-dimethyl-	134	C10H14	002870-04-4	90
2		Benzene, 2-ethyl-1,4-dimethyl-	134	C10H14	001758-88-9	90
3		o-Cymene	134	C10H14	000527-84-4	90
4		1,3,8-p-Menthatriene	134	C10H14	018368-95-1	90
5		o-Cymene	134	C10H14	000527-84-4	90



Data Path : Z:\HPCHEM1\BNA M\DATA\BM111717\  
 Data File : BM013025.D  
 Acq On : 18 Nov 2017 06:18  
 Operator : SJ/JU  
 Sample : I6451-10  
 Misc :  
 ALS Vial : 35 Sample Multiplier: 1

Instrument :  
 BNA\_M  
 ClientSampleId :  
 BE2X3

Quant Method : Z:\HPCHEM1\BNA M\METHODS\SOM-EPA-BM111617.M  
 Quant Title : SVOA CALIBRATION

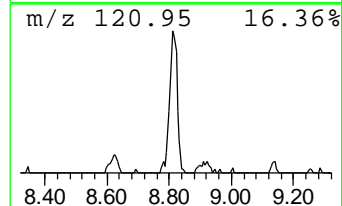
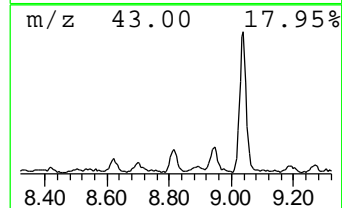
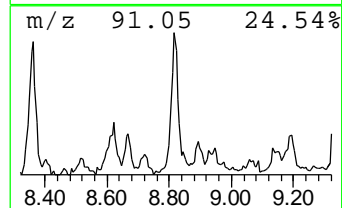
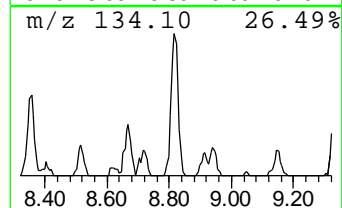
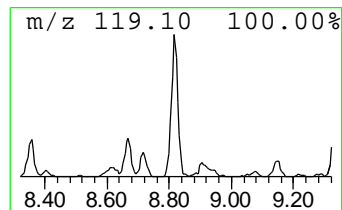
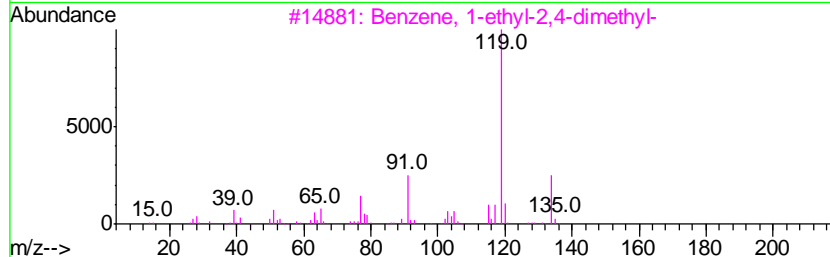
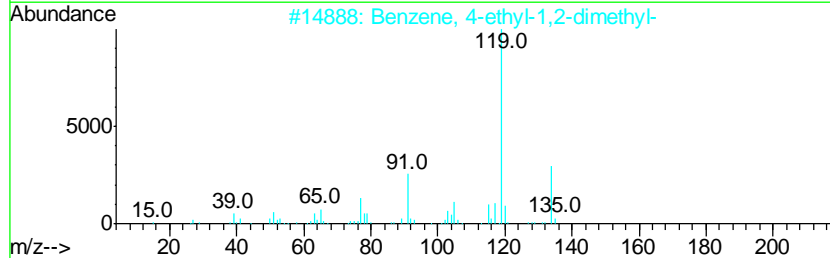
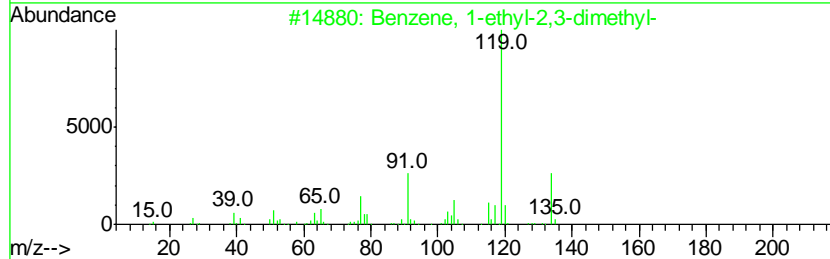
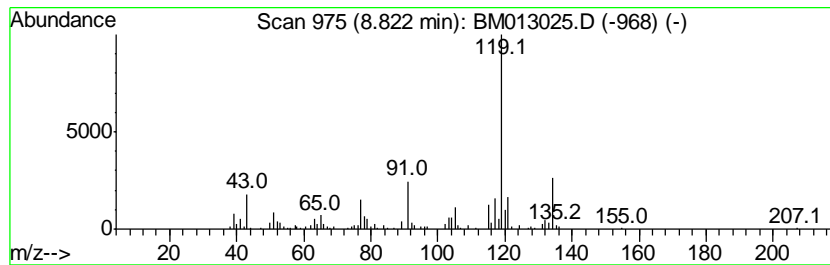
TIC Library : C:\DATABASE\NIST11.L  
 TIC Integration Parameters: LSCINT.P

\*\*\*\*\*  
 Peak Number 16 Benzene, 1-ethyl-2,3-dimethyl- Concentration Rank 26

R.T.	EstConc	Area	Relative to ISTD	R.T.
8.82	6.93 ng/ul	411233	1,4-Dichlorobenzene-d4	7.72

Hit#	of	Tentative ID	MW	MolForm	CAS#	Qual
1	5	Benzene, 1-ethyl-2,3-dimethyl-	134	C10H14	000933-98-2	96
2		Benzene, 4-ethyl-1,2-dimethyl-	134	C10H14	000934-80-5	96
3		Benzene, 1-ethyl-2,4-dimethyl-	134	C10H14	000874-41-9	94
4		Benzene, 2-ethyl-1,3-dimethyl-	134	C10H14	002870-04-4	93
5		Benzene, 2-ethyl-1,4-dimethyl-	134	C10H14	001758-88-9	92



Data Path : Z:\HPCHEM1\BNA M\DATA\BM111717\  
 Data File : BM013025.D  
 Acq On : 18 Nov 2017 06:18  
 Operator : SJ/JU  
 Sample : I6451-10  
 Misc :  
 ALS Vial : 35 Sample Multiplier: 1

Instrument :  
 BNA\_M  
 ClientSampled :  
 BE2X3

Quant Method : Z:\HPCHEM1\BNA M\METHODS\SOM-EPA-BM111617.M  
 Quant Title : SVOA CALIBRATION

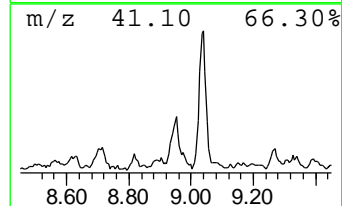
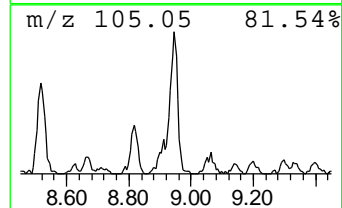
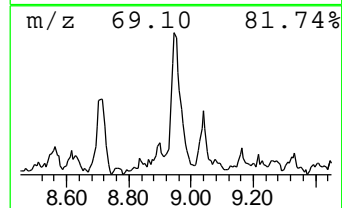
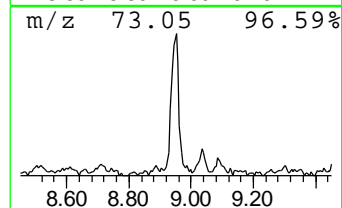
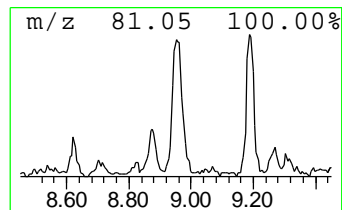
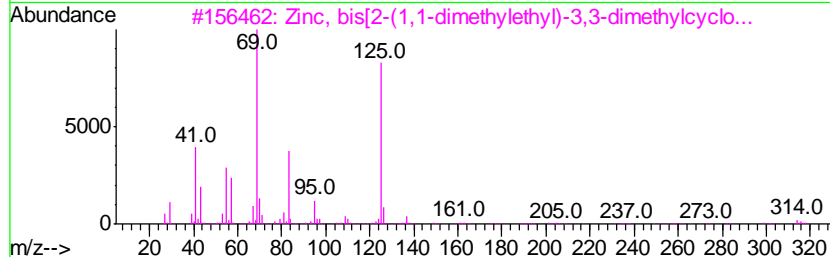
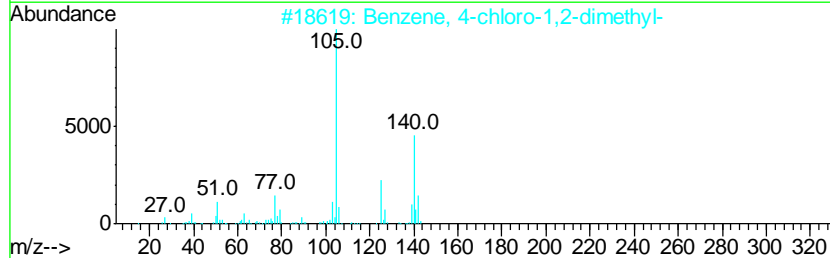
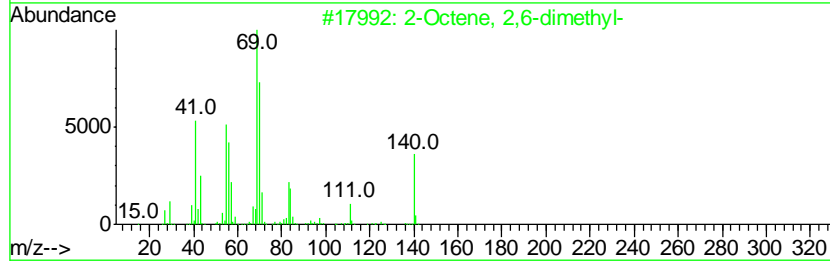
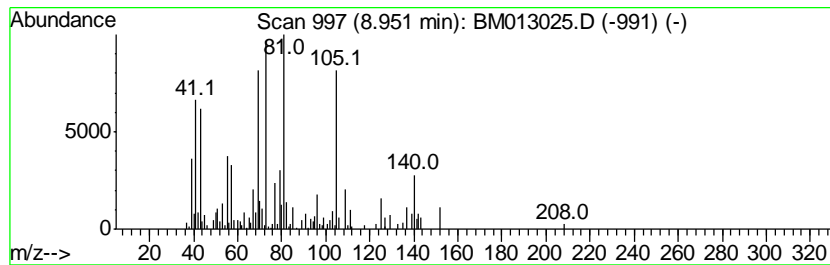
TIC Library : C:\DATABASE\NIST11.L  
 TIC Integration Parameters: LSCINT.P

\*\*\*\*\*  
 Peak Number 17 (DEL) Alkane: Cyclic8.95 Concentration Rank 20

R.T.	EstConc	Area	Relative to ISTD	R.T.
8.95	9.13 ng/ul	541788	1,4-Dichlorobenzene-d4	7.72

Hit#	of	Tentative ID	MW	MolForm	CAS#	Qual
1	5	2-Octene, 2,6-dimethyl-	140	C10H20	004057-42-5	27
2		Benzene, 4-chloro-1,2-dimethyl-	140	C8H9Cl	000615-60-1	25
3		Zinc, bis[2-(1,1-dimethylethyl)-...]	314	C18H34Zn	074793-36-5	22
4		Cyclohexane, 1,2-diethyl-3-methyl-	154	C11H22	061141-80-8	22
5		m-Xylene, 5-chloro-	140	C8H9Cl	000556-97-8	15





Data Path : Z:\HPCHEM1\BNA M\DATA\BM111717\  
 Data File : BM013025.D  
 Acq On : 18 Nov 2017 06:18  
 Operator : SJ/JU  
 Sample : I6451-10  
 Misc :  
 ALS Vial : 35 Sample Multiplier: 1

Instrument :  
 BNA\_M  
 ClientSampled :  
 BE2X3

Quant Method : Z:\HPCHEM1\BNA M\METHODS\SOM-EPA-BM111617.M  
 Quant Title : SVOA CALIBRATION

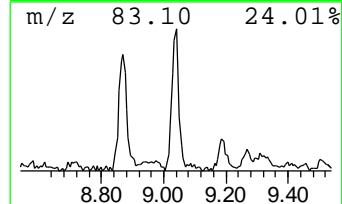
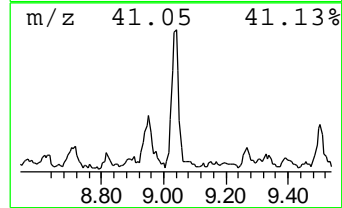
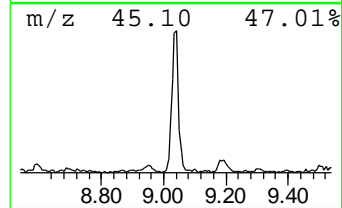
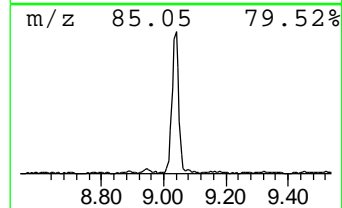
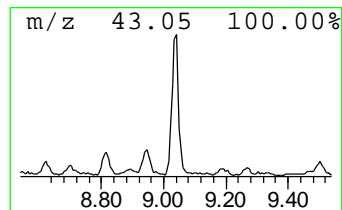
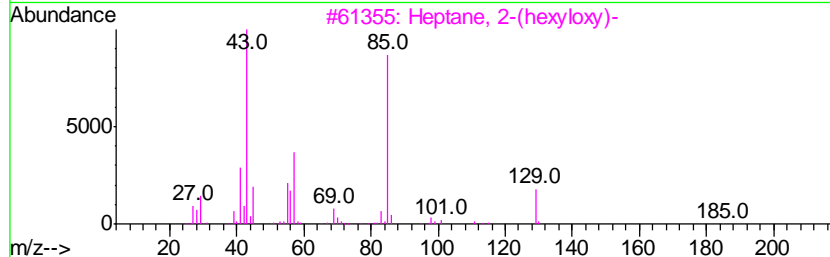
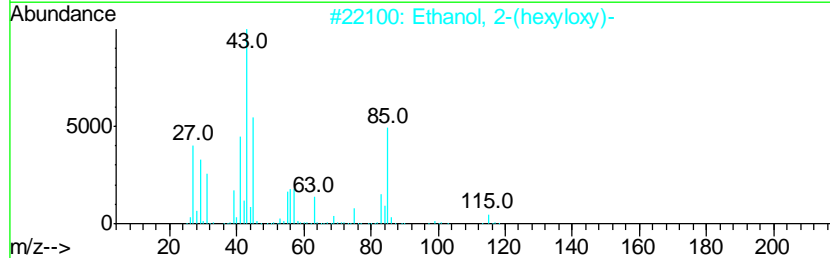
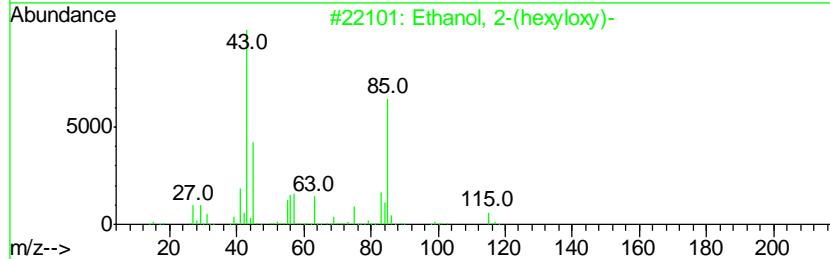
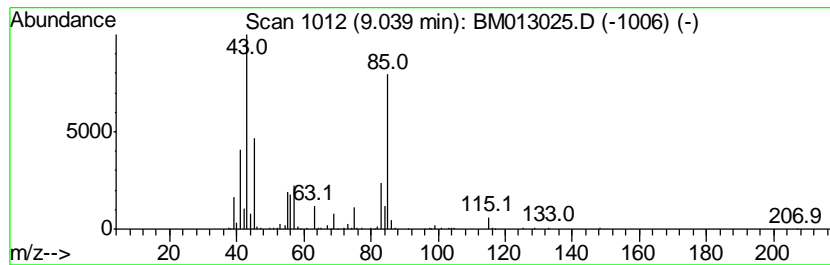
TIC Library : C:\DATABASE\NIST11.L  
 TIC Integration Parameters: LSCINT.P

\*\*\*\*\*  
 Peak Number 18 Ethanol, 2-(hexyloxy)- Concentration Rank 12

R.T.	EstConc	Area	Relative to ISTD	R.T.
9.04	11.63 ng/ul	690091	1,4-Dichlorobenzene-d4	7.72

Hit#	of	Tentative ID	MW	MolForm	CAS#	Qual
1	5	Ethanol, 2-(hexyloxy)-	146	C8H18O2	000112-25-4	78
2		Ethanol, 2-(hexyloxy)-	146	C8H18O2	000112-25-4	53
3		Heptane, 2-(hexyloxy)-	200	C13H28O	074663-79-9	47
4		Sulfurous acid, isohexyl hexyl e...	250	C12H26O3S	1000309-12-8	47
5		Heptane, 4,4-dimethyl-	128	C9H20	001068-19-5	43



Data Path : Z:\HPCHEM1\BNA M\DATA\BM111717\  
 Data File : BM013025.D  
 Acq On : 18 Nov 2017 06:18  
 Operator : SJ/JU  
 Sample : I6451-10  
 Misc :  
 ALS Vial : 35 Sample Multiplier: 1

Instrument :  
 BNA\_M  
 ClientSampled :  
 BE2X3

Quant Method : Z:\HPCHEM1\BNA M\METHODS\SOM-EPA-BM111617.M  
 Quant Title : SVOA CALIBRATION

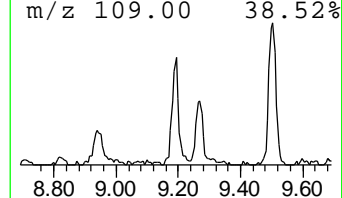
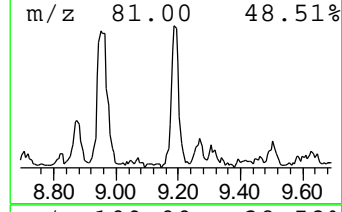
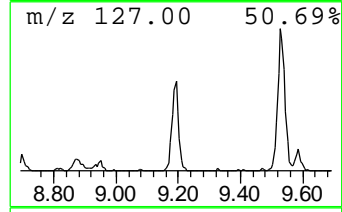
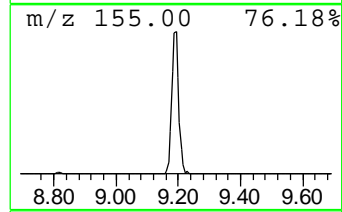
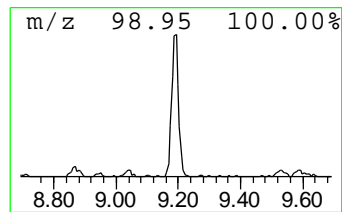
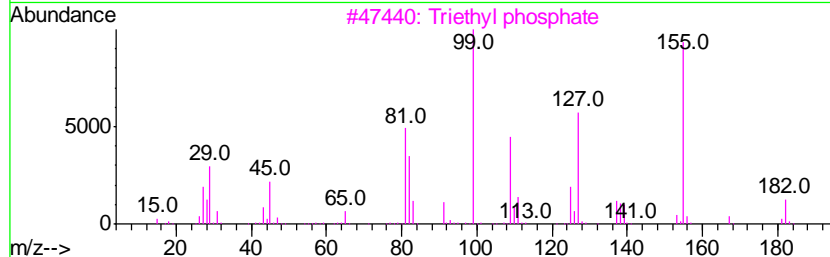
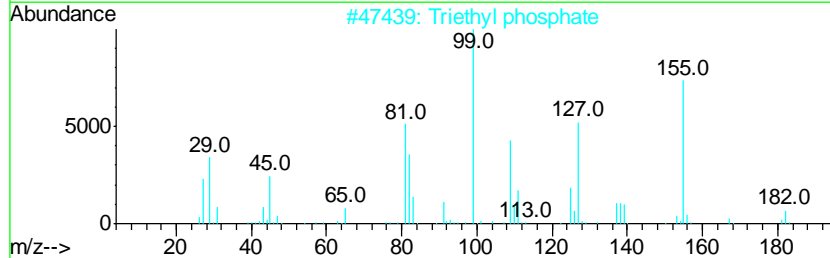
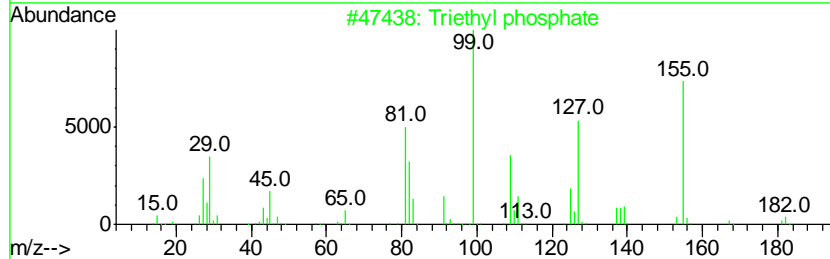
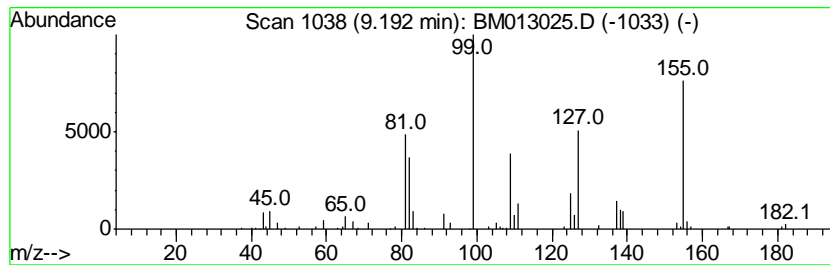
TIC Library : C:\DATABASE\NIST11.L  
 TIC Integration Parameters: LSCINT.P

\*\*\*\*\*  
 Peak Number 19 Triethyl phosphate Concentration Rank 36

R.T.	EstConc	Area	Relative to ISTD	R.T.
9.19	4.52 ng/ul	342402	Naphthalene-d8	10.50

Hit#	of	Tentative ID	MW	MolForm	CAS#	Qual
1	5	Triethyl phosphate	182	C6H15O4P	000078-40-0	94
2		Triethyl phosphate	182	C6H15O4P	000078-40-0	91
3		Triethyl phosphate	182	C6H15O4P	000078-40-0	80
4		Butyl diethyl phosphate	210	C8H19O4P	1000298-58-0	56
5		Phosphoric acid, diethyl pentyl ...	224	C9H21O4P	020195-08-8	42



Data Path : Z:\HPCHEM1\BNA M\DATA\BM111717\  
 Data File : BM013025.D  
 Acq On : 18 Nov 2017 06:18  
 Operator : SJ/JU  
 Sample : I6451-10  
 Misc :  
 ALS Vial : 35 Sample Multiplier: 1

Instrument :  
 BNA\_M  
 ClientSampleId :  
 BE2X3

Quant Method : Z:\HPCHEM1\BNA M\METHODS\SOM-EPA-BM111617.M  
 Quant Title : SVOA CALIBRATION

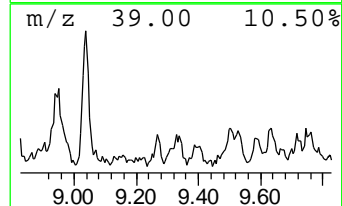
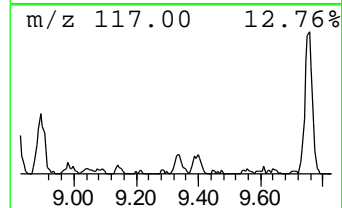
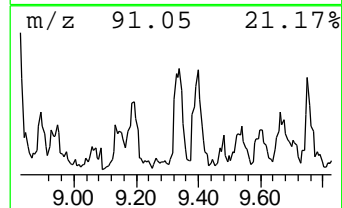
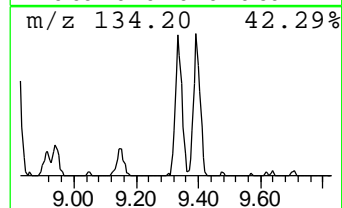
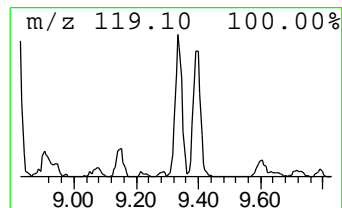
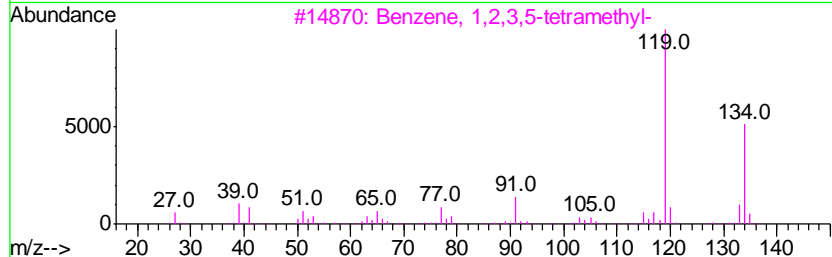
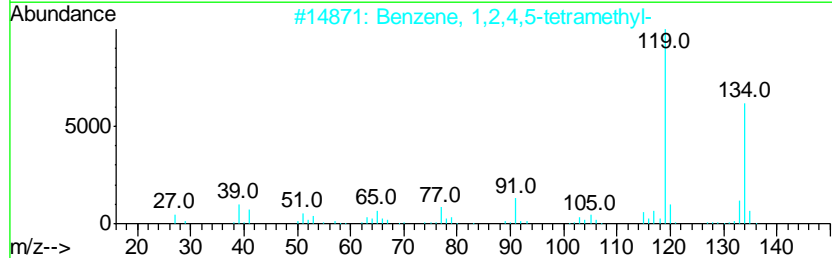
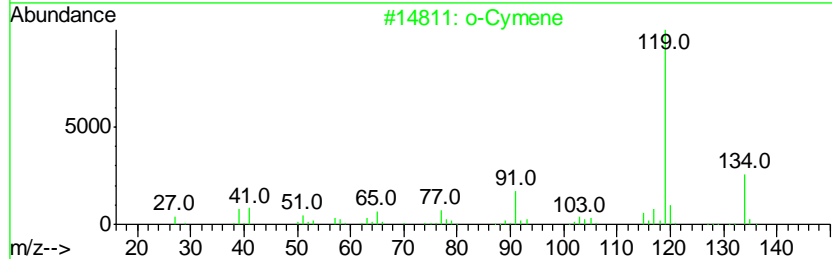
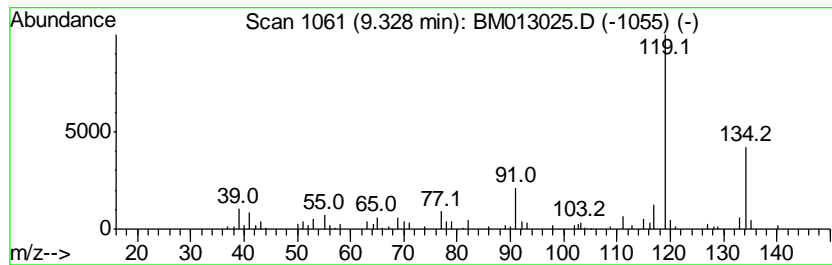
TIC Library : C:\DATABASE\NIST11.L  
 TIC Integration Parameters: LSCINT.P

\*\*\*\*\*  
 Peak Number 20 o-Cymene Concentration Rank 47

R.T.	EstConc	Area	Relative to ISTD	R.T.
9.33	3.02 ng/ul	228310	Napthalene-d8	10.50

Hit#	of	Tentative ID	MW	MolForm	CAS#	Qual
1	5	o-Cymene	134	C10H14	000527-84-4	93
2		Benzene, 1,2,4,5-tetramethyl-	134	C10H14	000095-93-2	91
3		Benzene, 1,2,3,5-tetramethyl-	134	C10H14	000527-53-7	91
4		Benzene, 1,2,4,5-tetramethyl-	134	C10H14	000095-93-2	91
5		Benzene, 2-ethyl-1,4-dimethyl-	134	C10H14	001758-88-9	91



Data Path : Z:\HPCHEM1\BNA M\DATA\BM111717\  
 Data File : BM013025.D  
 Acq On : 18 Nov 2017 06:18  
 Operator : SJ/JU  
 Sample : I6451-10  
 Misc :  
 ALS Vial : 35 Sample Multiplier: 1

Instrument :  
 BNA\_M  
 ClientSampled :  
 BE2X3

Quant Method : Z:\HPCHEM1\BNA M\METHODS\SOM-EPA-BM111617.M  
 Quant Title : SVOA CALIBRATION

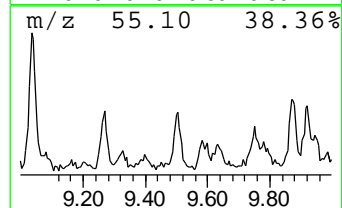
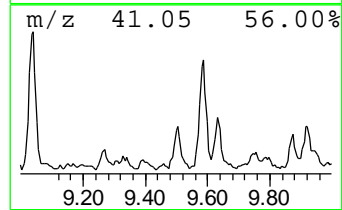
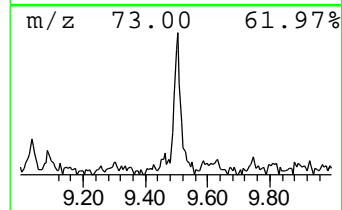
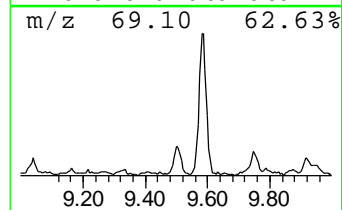
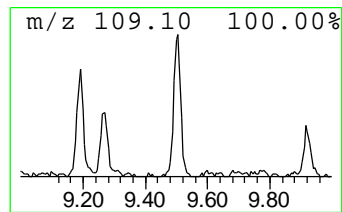
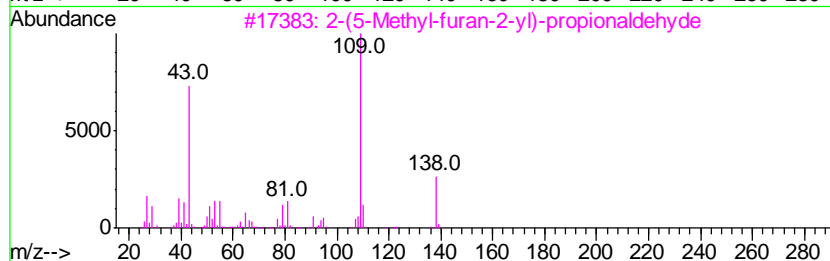
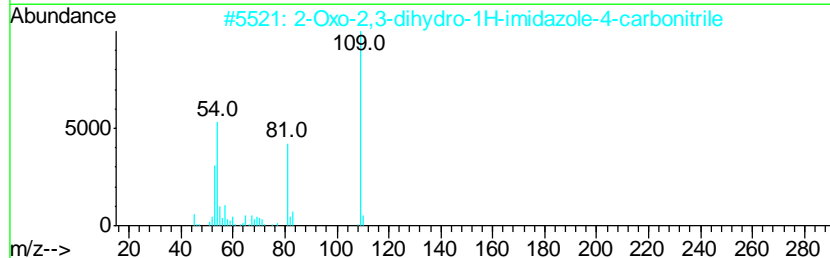
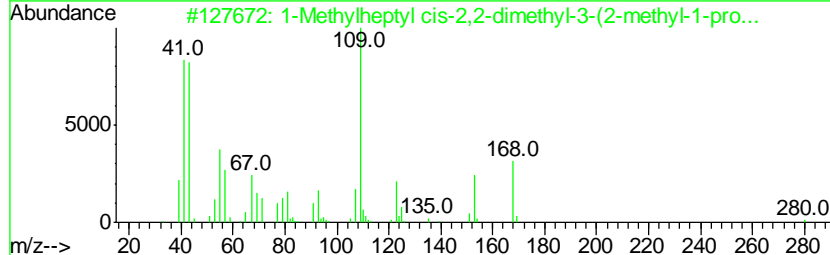
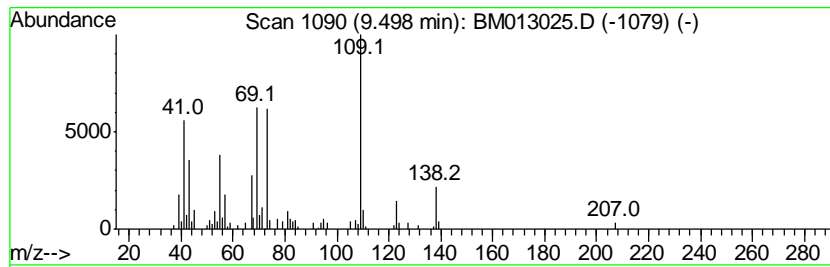
TIC Library : C:\DATABASE\NIST11.L  
 TIC Integration Parameters: LSCINT.P

\*\*\*\*\*  
 Peak Number 21 unknown-03 Concentration Rank 43

R.T.	EstConc	Area	Relative to ISTD	R.T.
9.50	3.48 ng/ul	263346	Naphthalene-d8	10.50

Hit#	of	Tentative ID	MW	MolForm	CAS#	Qual
1	5	1-Methylheptyl cis-2,2-dimethyl-...	280	C18H32O2	1000223-35-3	47
2		2-Oxo-2,3-dihydro-1H-imidazole-4...	109	C4H3N3O	1000294-08-6	38
3		2-(5-Methyl-furan-2-yl)-propiona...	138	C8H10O2	1000193-72-3	38
4		Phenol, o-amino-	109	C6H7NO	000095-55-6	38
5		Cyclopentane, 2-ethylidene-1,1-d...	124	C9H16	056324-66-4	38



Data Path : Z:\HPCHEM1\BNA M\DATA\BM111717\  
 Data File : BM013025.D  
 Acq On : 18 Nov 2017 06:18  
 Operator : SJ/JU  
 Sample : I6451-10  
 Misc :  
 ALS Vial : 35 Sample Multiplier: 1

Instrument :  
 BNA\_M  
 ClientSampleId :  
 BE2X3

Quant Method : Z:\HPCHEM1\BNA M\METHODS\SOM-EPA-BM111617.M  
 Quant Title : SVOA CALIBRATION

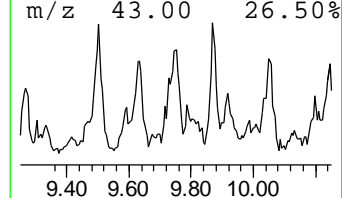
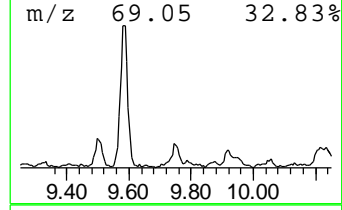
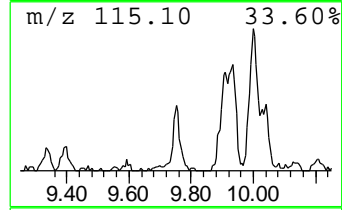
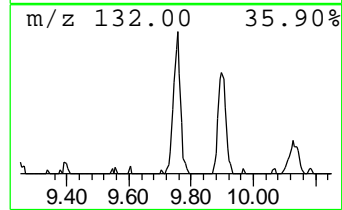
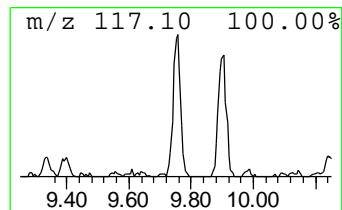
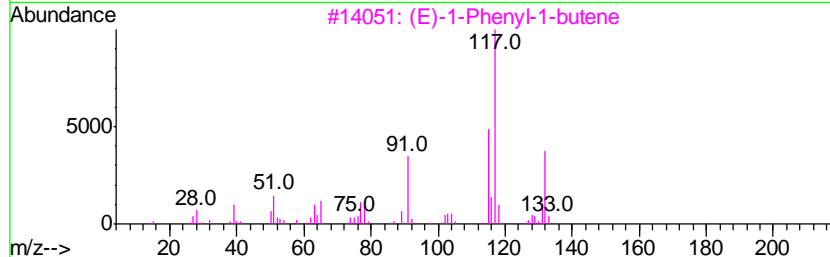
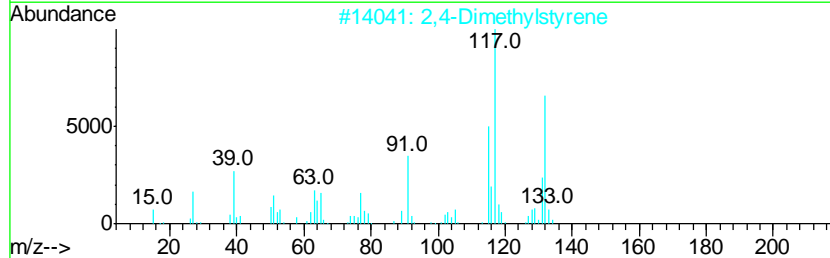
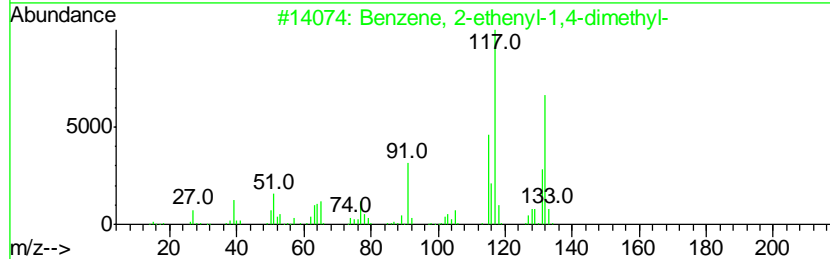
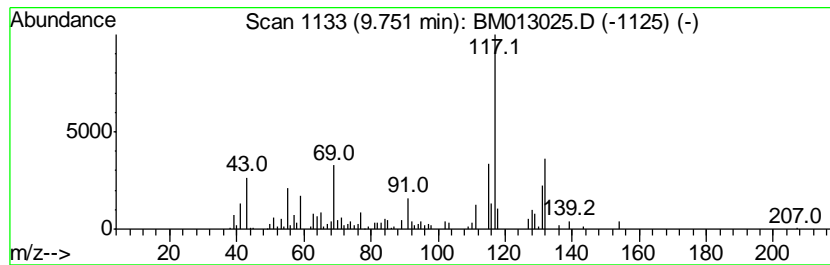
TIC Library : C:\DATABASE\NIST11.L  
 TIC Integration Parameters: LSCINT.P

\*\*\*\*\*  
 Peak Number 22 Benzene, 2-ethenyl-1,4-dime... Concentration Rank 49

R.T.	EstConc	Area	Relative to ISTD	R.T.
9.75	2.78 ng/ul	210488	Naphthalene-d8	10.50

Hit#	of	Tentative ID	MW	MolForm	CAS#	Qual
1	5	Benzene, 2-ethenyl-1,4-dimethyl-	132	C10H12	002039-89-6	92
2		2,4-Dimethylstyrene	132	C10H12	002234-20-0	87
3		(E)-1-Phenyl-1-butene	132	C10H12	001005-64-7	76
4		Benzene, 1-methyl-4-(2-propenyl)-	132	C10H12	003333-13-9	76
5		1H-Indene, 2,3-dihydro-5-methyl-	132	C10H12	000874-35-1	76



Data Path : Z:\HPCHEM1\BNA M\DATA\BM111717\  
 Data File : BM013025.D  
 Acq On : 18 Nov 2017 06:18  
 Operator : SJ/JU  
 Sample : I6451-10  
 Misc :  
 ALS Vial : 35 Sample Multiplier: 1

Instrument :  
 BNA\_M  
 ClientSampled :  
 BE2X3

Quant Method : Z:\HPCHEM1\BNA M\METHODS\SOM-EPA-BM111617.M  
 Quant Title : SVOA CALIBRATION

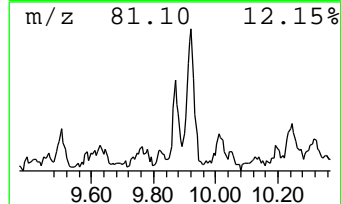
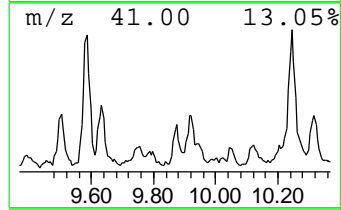
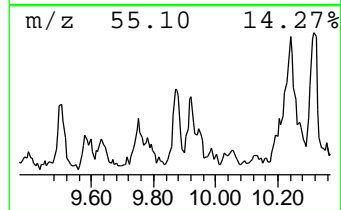
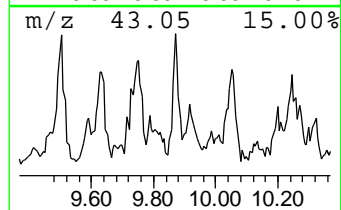
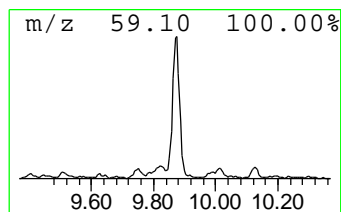
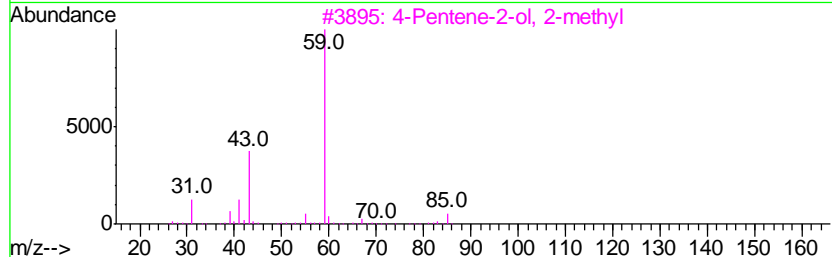
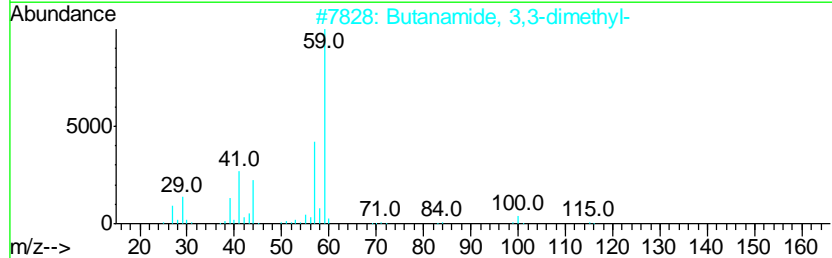
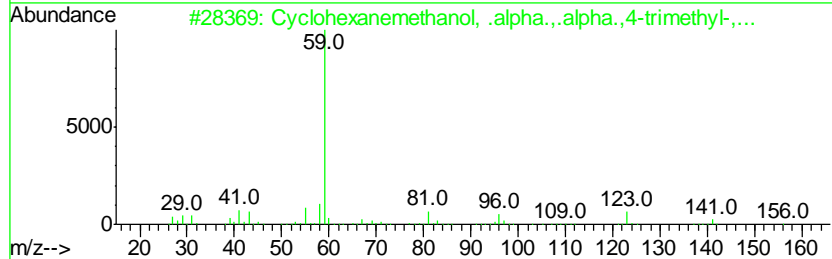
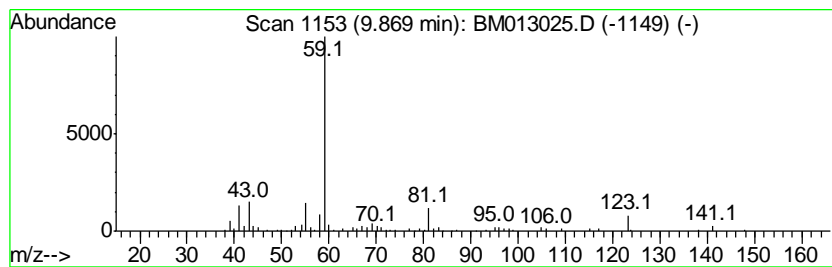
TIC Library : C:\DATABASE\NIST11.L  
 TIC Integration Parameters: LSCINT.P

\*\*\*\*\*  
 Peak Number 23 Cyclohexanemethanol, .alpha... Concentration Rank 46

R.T.	EstConc	Area	Relative to ISTD	R.T.
9.87	3.34 ng/ul	253148	Napthalene-d8	10.50

Hit#	of	Tentative ID	MW	MolForm	CAS#	Qual
1	5	Cyclohexanemethanol, .alpha...al...	156	C10H20O	005114-00-1	72
2		Butanamide, 3,3-dimethyl-	115	C6H13NO	000926-04-5	64
3		4-Pentene-2-ol, 2-methyl	100	C6H12O	000624-97-5	64
4		2-Dodecanol, 2-methyl-	200	C13H28O	001653-37-8	64
5		Cyclohexanemethanol, .alpha...al...	156	C10H20O	000498-81-7	56



Data Path : Z:\HPCHEM1\BNA M\DATA\BM111717\  
 Data File : BM013025.D  
 Acq On : 18 Nov 2017 06:18  
 Operator : SJ/JU  
 Sample : I6451-10  
 Misc :  
 ALS Vial : 35 Sample Multiplier: 1

Instrument :  
 BNA\_M  
 ClientSampled :  
 BE2X3

Quant Method : Z:\HPCHEM1\BNA M\METHODS\SOM-EPA-BM111617.M  
 Quant Title : SVOA CALIBRATION

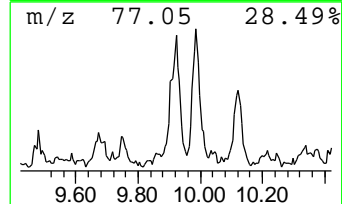
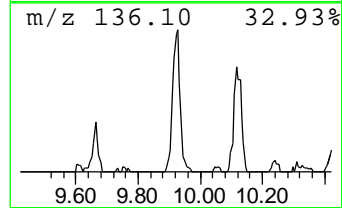
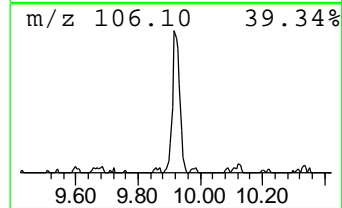
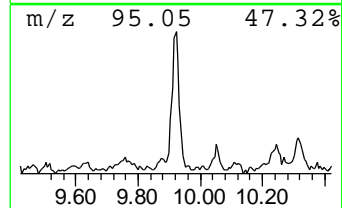
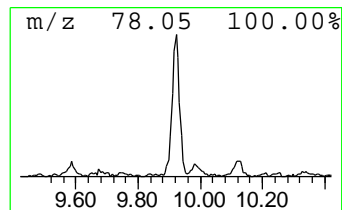
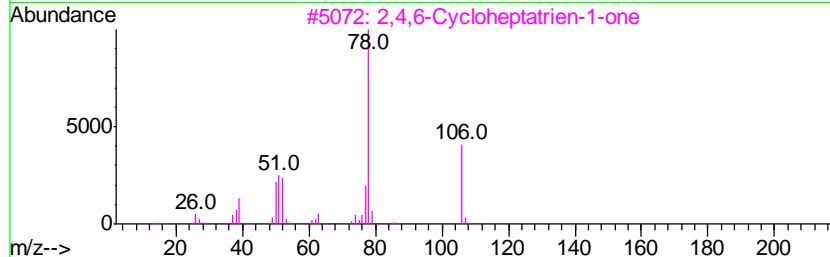
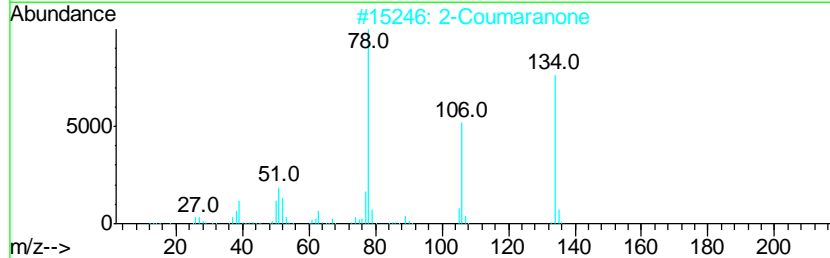
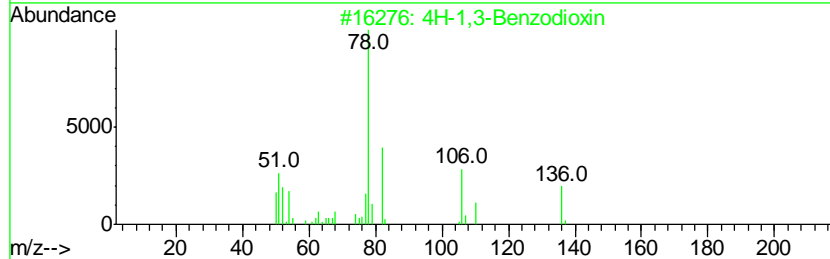
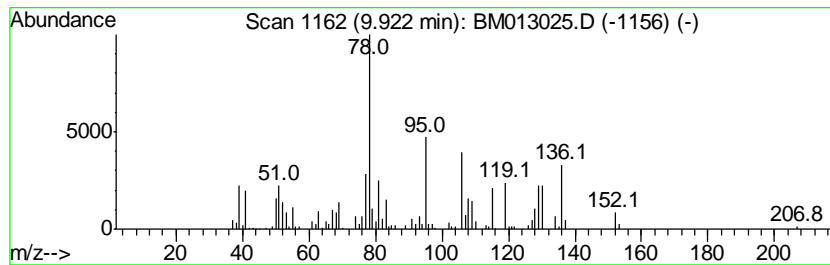
TIC Library : C:\DATABASE\NIST11.L  
 TIC Integration Parameters: LSCINT.P

\*\*\*\*\*  
 Peak Number 24 4H-1,3-Benzodioxin Concentration Rank 15

R.T.	EstConc	Area	Relative to ISTD	R.T.
9.92	11.17 ng/ul	845809	Naphthalene-d8	10.50

Hit#	of	Tentative ID	MW	MolForm	CAS#	Qual
1	5	4H-1,3-Benzodioxin	136	C8H8O2	000254-27-3	62
2		2-Coumaranone	134	C8H6O2	000553-86-6	58
3		2,4,6-Cycloheptatrien-1-one	106	C7H6O	000539-80-0	58
4		2-Pyridinecarboxaldehyde, N-oxide	123	C6H5NO2	007216-40-2	53
5		Benzeneacetic acid, 2-hydroxy-	152	C8H8O3	000614-75-5	53



Data Path : Z:\HPCHEM1\BNA M\DATA\BM111717\  
 Data File : BM013025.D  
 Acq On : 18 Nov 2017 06:18  
 Operator : SJ/JU  
 Sample : I6451-10  
 Misc :  
 ALS Vial : 35 Sample Multiplier: 1

Instrument :  
 BNA\_M  
 ClientSampled :  
 BE2X3

Quant Method : Z:\HPCHEM1\BNA M\METHODS\SOM-EPA-BM111617.M  
 Quant Title : SVOA CALIBRATION

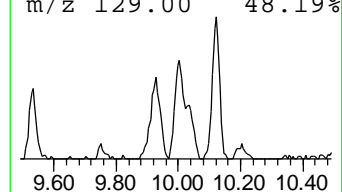
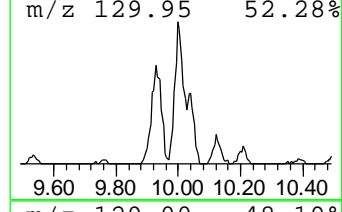
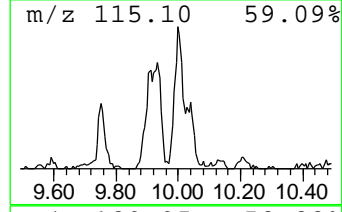
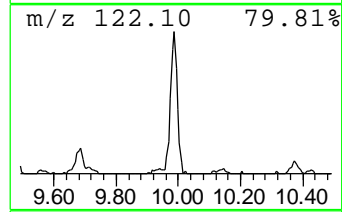
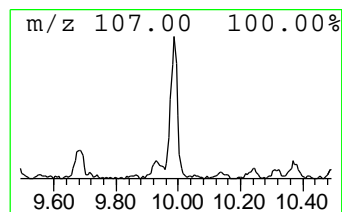
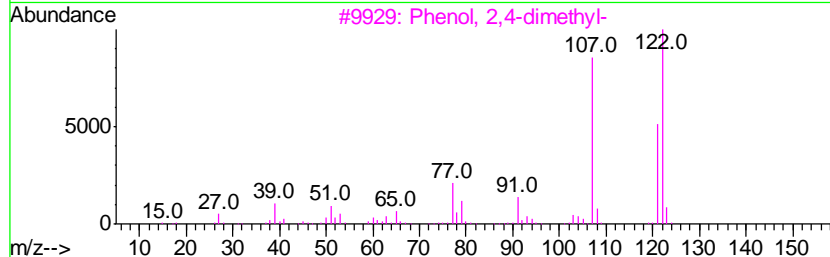
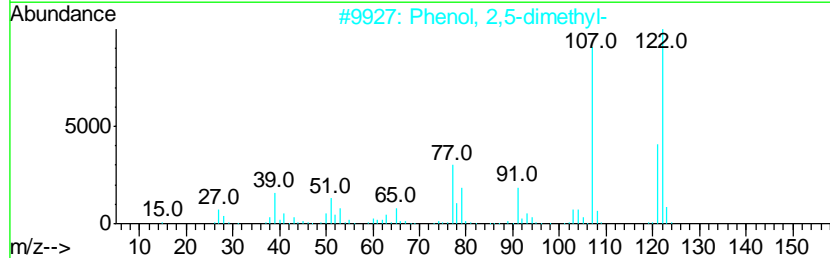
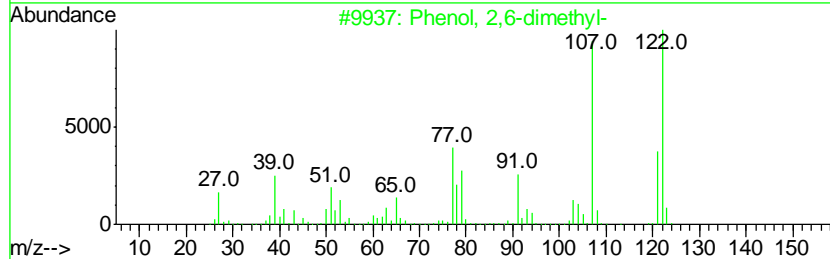
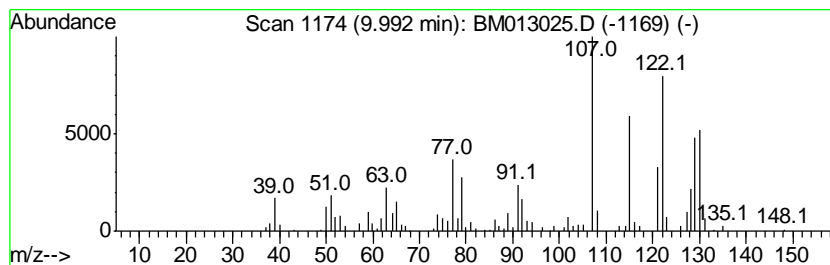
TIC Library : C:\DATABASE\NIST11.L  
 TIC Integration Parameters: LSCINT.P

\*\*\*\*\*  
 Peak Number 25 Phenol, 2,6-dimethyl- Concentration Rank 30

R.T.	EstConc	Area	Relative to ISTD	R.T.
9.99	5.99 ng/ul	453483	Naphthalene-d8	10.50

Hit#	of	Tentative ID	MW	MolForm	CAS#	Qual
1	5	Phenol, 2,6-dimethyl-	122	C8H10O	000576-26-1	89
2		Phenol, 2,5-dimethyl-	122	C8H10O	000095-87-4	76
3		Phenol, 2,4-dimethyl-	122	C8H10O	000105-67-9	76
4		Phenol, 2-ethyl-	122	C8H10O	000090-00-6	76
5		Phenol, 3,5-dimethyl-	122	C8H10O	000108-68-9	76





Data Path : Z:\HPCHEM1\BNA M\DATA\BM111717\  
 Data File : BM013025.D  
 Acq On : 18 Nov 2017 06:18  
 Operator : SJ/JU  
 Sample : I6451-10  
 Misc :  
 ALS Vial : 35 Sample Multiplier: 1

Instrument :  
 BNA\_M  
 ClientSampleID :  
 BE2X3

Quant Method : Z:\HPCHEM1\BNA M\METHODS\SOM-EPA-BM111617.M  
 Quant Title : SVOA CALIBRATION

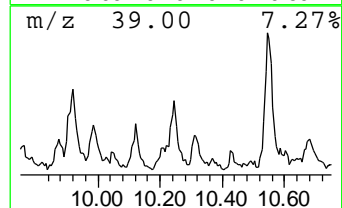
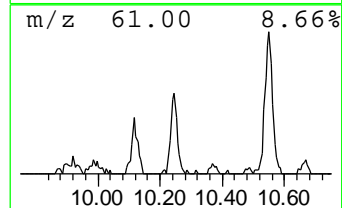
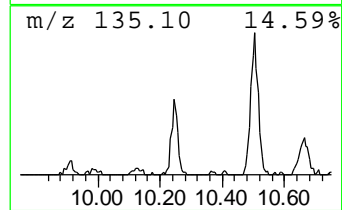
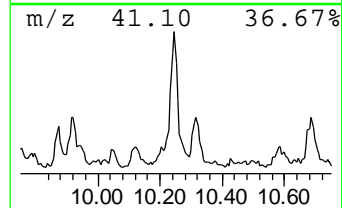
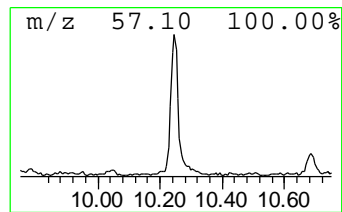
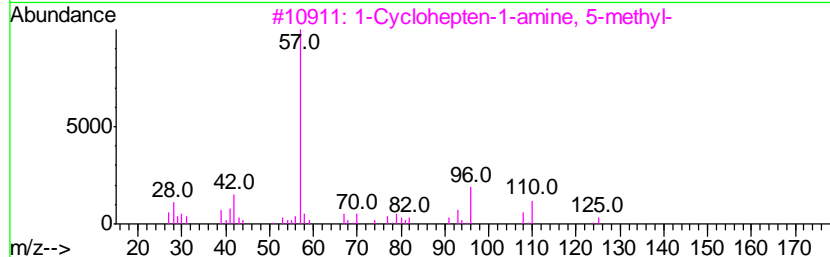
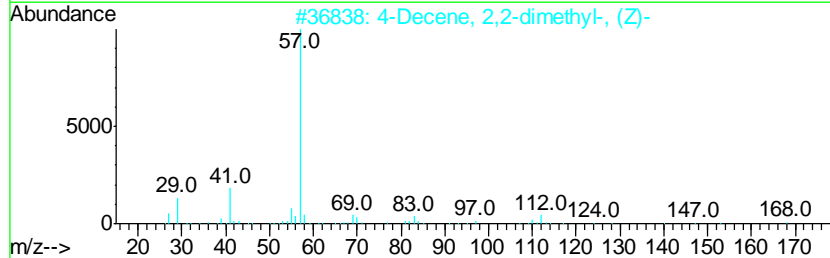
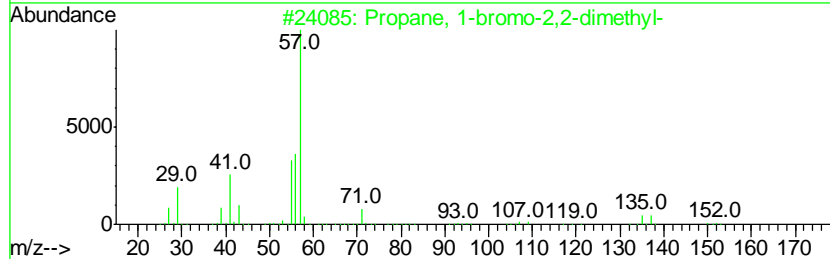
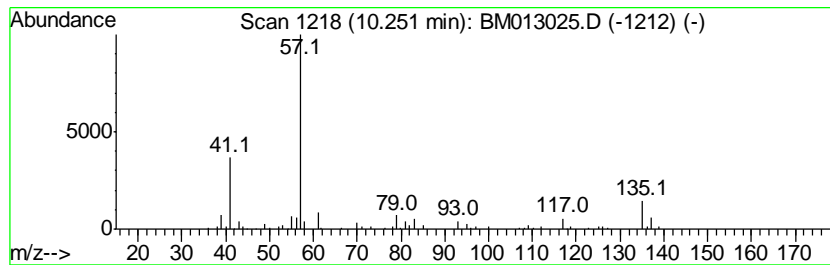
TIC Library : C:\DATABASE\NIST11.L  
 TIC Integration Parameters: LSCINT.P

\*\*\*\*\*  
 Peak Number 26 unknown-04 Concentration Rank 33

R.T.	EstConc	Area	Relative to ISTD	R.T.
10.25	5.36 ng/ul	405816	Napthalene-d8	10.50

Hit#	of	Tentative ID	MW	MolForm	CAS#	Qual
1	5	Propane, 1-bromo-2,2-dimethyl-	150	C5H11Br	000630-17-1	17
2		4-Decene, 2,2-dimethyl-, (Z)-	168	C12H24	055499-03-1	10
3		1-Cyclohepten-1-amine, 5-methyl-	125	C8H15N	053907-56-5	9
4		Butane, 2-bromo-	136	C4H9Br	000078-76-2	9
5		Butane, 2-bromo-	136	C4H9Br	000078-76-2	9



Data Path : Z:\HPCHEM1\BNA M\DATA\BM111717\  
 Data File : BM013025.D  
 Acq On : 18 Nov 2017 06:18  
 Operator : SJ/JU  
 Sample : I6451-10  
 Misc :  
 ALS Vial : 35 Sample Multiplier: 1

Instrument :  
 BNA\_M  
 ClientSampled :  
 BE2X3

Quant Method : Z:\HPCHEM1\BNA M\METHODS\SOM-EPA-BM111617.M  
 Quant Title : SVOA CALIBRATION

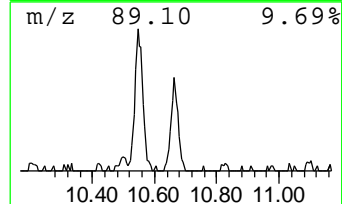
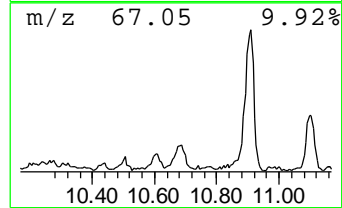
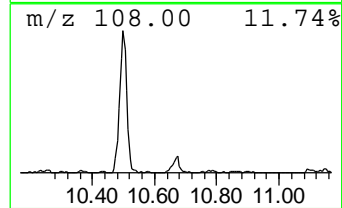
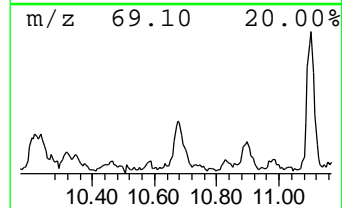
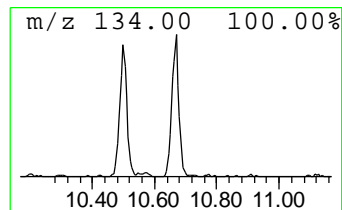
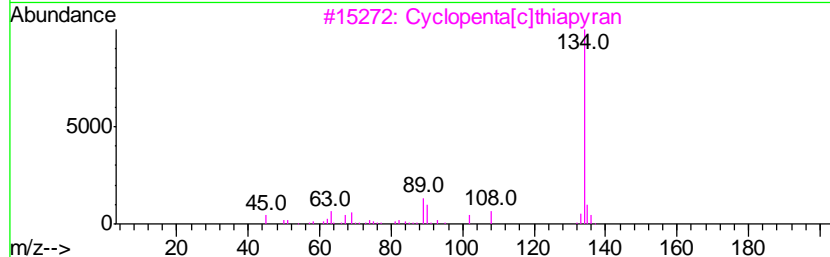
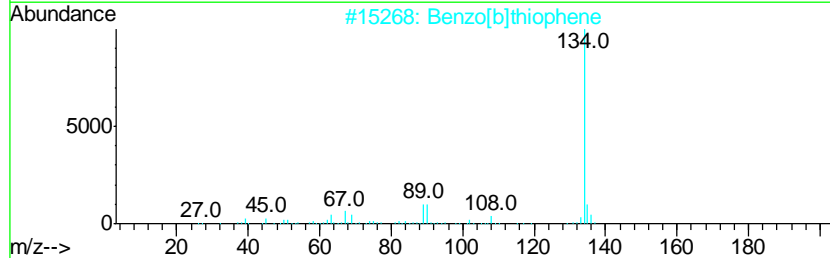
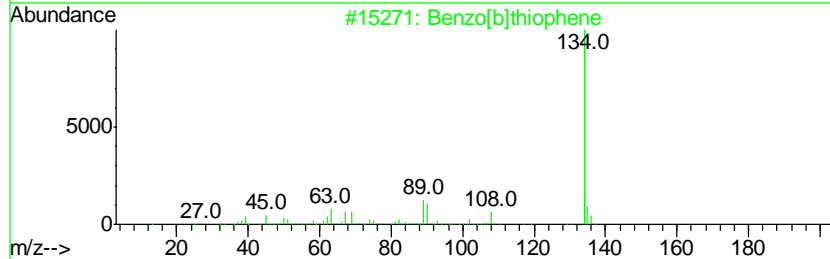
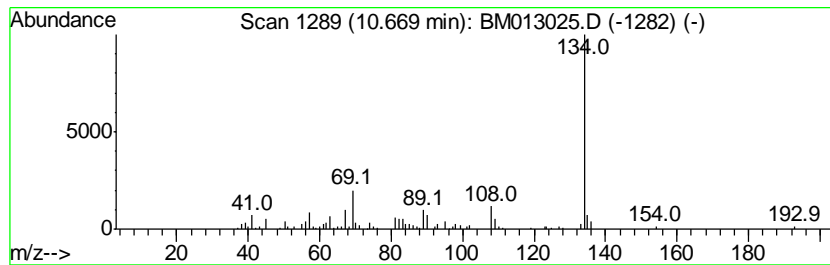
TIC Library : C:\DATABASE\NIST11.L  
 TIC Integration Parameters: LSCINT.P

\*\*\*\*\*  
 Peak Number 27 Benzo[b]thiophene Concentration Rank 32

R.T.	EstConc	Area	Relative to ISTD	R.T.
10.67	5.47 ng/ul	413842	Naphthalene-d8	10.50

Hit#	of	Tentative ID	MW	MolForm	CAS#	Qual
1	5	Benzo[b]thiophene	134	C8H6S	000095-15-8	87
2		Benzo[b]thiophene	134	C8H6S	000095-15-8	83
3		Cyclopenta[c]thiapyran	134	C8H6S	000270-63-3	72
4		Benzo[b]thiophene	134	C8H6S	000095-15-8	59
5		[1]Benzothieno[2',3':3,4]cyclobu...	246	C13H10O3S	034002-19-2	50



Data Path : Z:\HPCHEM1\BNA M\DATA\BM111717\  
 Data File : BM013025.D  
 Acq On : 18 Nov 2017 06:18  
 Operator : SJ/JU  
 Sample : I6451-10  
 Misc :  
 ALS Vial : 35 Sample Multiplier: 1

Instrument :  
 BNA\_M  
 ClientSampled :  
 BE2X3

Quant Method : Z:\HPCHEM1\BNA M\METHODS\SOM-EPA-BM111617.M  
 Quant Title : SVOA CALIBRATION

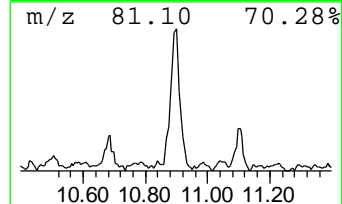
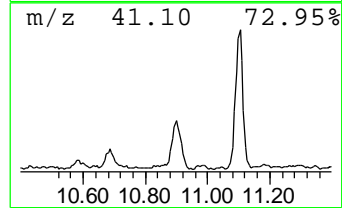
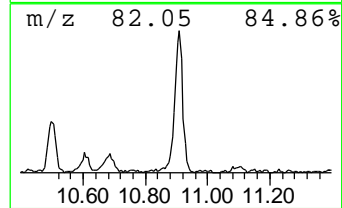
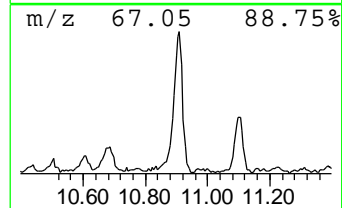
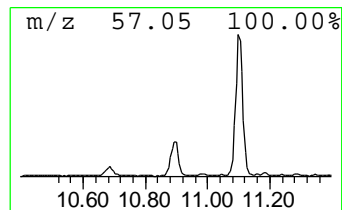
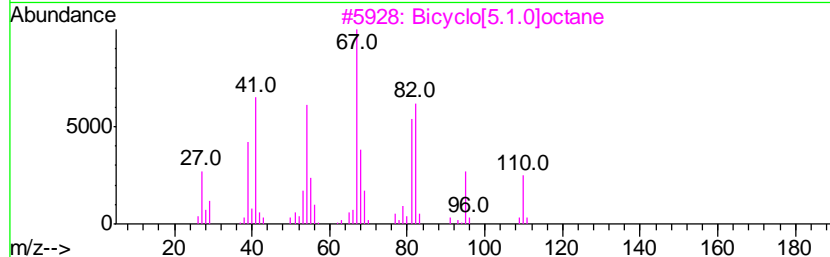
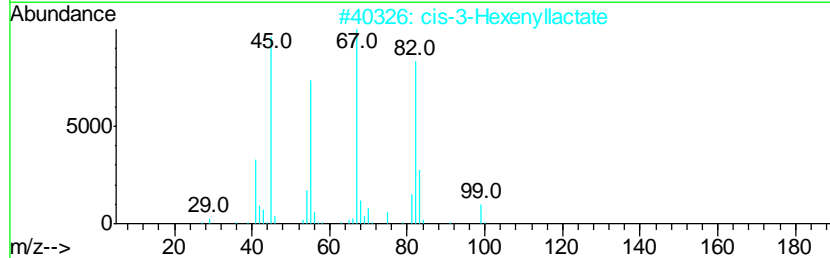
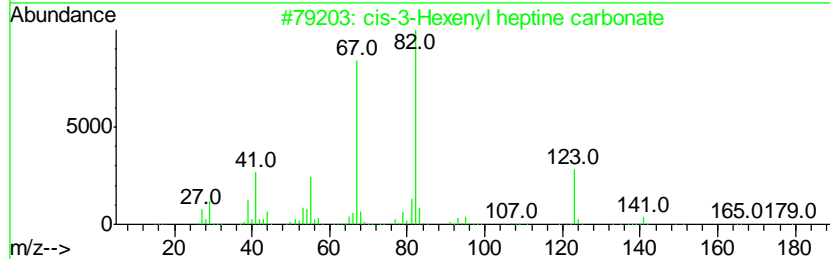
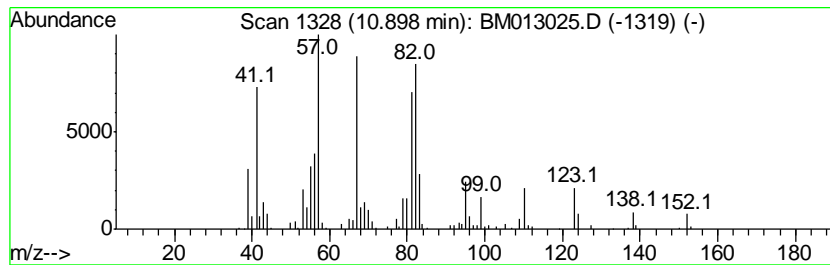
TIC Library : C:\DATABASE\NIST11.L  
 TIC Integration Parameters: LSCINT.P

\*\*\*\*\*  
 Peak Number 28 unknown-05 Concentration Rank 17

R.T.	EstConc	Area	Relative to ISTD	R.T.
10.90	9.99 ng/ul	756602	Naphthalene-d8	10.50

Hit#	of	Tentative ID	MW	MolForm	CAS#	Qual
1	5	cis-3-Hexenyl heptine carbonate	222	C14H22O2	068698-58-8	47
2		cis-3-Hexenyllactate	172	C9H16O3	061931-81-5	47
3		Bicyclo[5.1.0]octane	110	C8H14	000286-43-1	43
4		2-Cyclohexen-1-one, 4,5-dimethyl-	124	C8H12O	005715-25-3	38
5		Cyclopentene, 1-pentyl-	138	C10H18	004291-98-9	38



Data Path : Z:\HPCHEM1\BNA M\DATA\BM111717\  
 Data File : BM013025.D  
 Acq On : 18 Nov 2017 06:18  
 Operator : SJ/JU  
 Sample : I6451-10  
 Misc :  
 ALS Vial : 35 Sample Multiplier: 1

Instrument :  
 BNA\_M  
 ClientSampleId :  
 BE2X3

Quant Method : Z:\HPCHEM1\BNA M\METHODS\SOM-EPA-BM111617.M  
 Quant Title : SVOA CALIBRATION

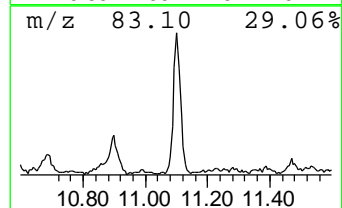
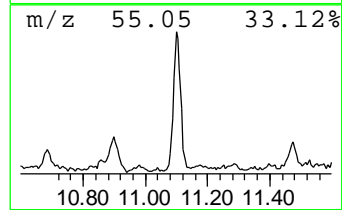
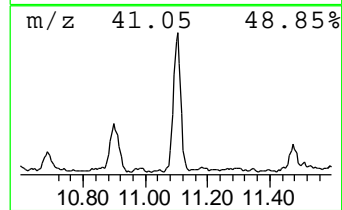
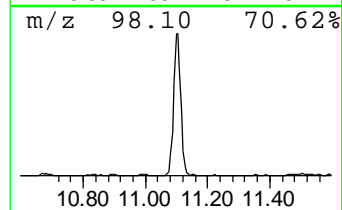
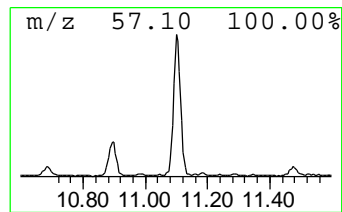
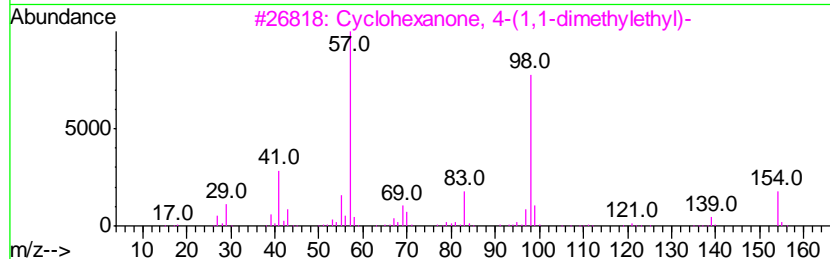
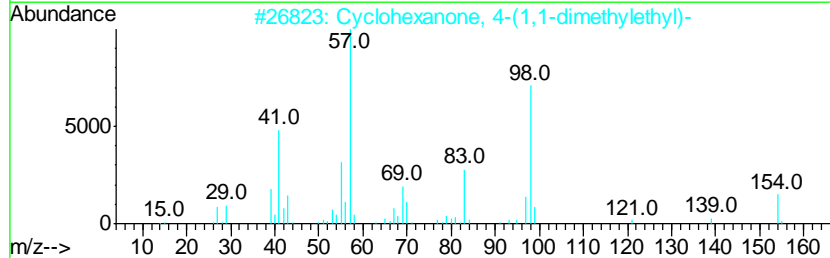
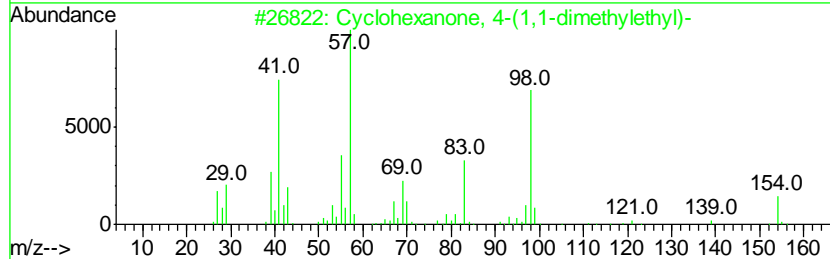
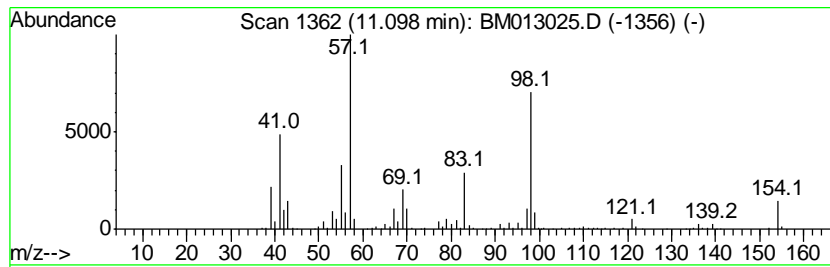
TIC Library : C:\DATABASE\NIST11.L  
 TIC Integration Parameters: LSCINT.P

\*\*\*\*\*  
 Peak Number 29 Cyclohexanone, 4-(1,1-dimet... Concentration Rank 8

R.T.	EstConc	Area	Relative to ISTD	R.T.
11.10	16.49 ng/ul	1248260	Naphthalene-d8	10.50

Hit#	of	Tentative ID	MW	MolForm	CAS#	Qual
1	5	Cyclohexanone, 4-(1,1-dimethyl-ethyl)-	154	C10H18O	000098-53-3	95
2		Cyclohexanone, 4-(1,1-dimethyl-ethyl)-	154	C10H18O	000098-53-3	94
3		Cyclohexanone, 4-(1,1-dimethyl-ethyl)-	154	C10H18O	000098-53-3	87
4		Cyclohexanone, 4-(1,1-dimethyl-ethyl)-	154	C10H18O	000098-53-3	76
5		2-Pentenal, 2-methyl-	98	C6H10O	000623-36-9	68



Data Path : Z:\HPCHEM1\BNA M\DATA\BM111717\  
 Data File : BM013025.D  
 Acq On : 18 Nov 2017 06:18  
 Operator : SJ/JU  
 Sample : I6451-10  
 Misc :  
 ALS Vial : 35 Sample Multiplier: 1

Instrument :  
 BNA\_M  
 ClientSampleID :  
 BE2X3

Quant Method : Z:\HPCHEM1\BNA M\METHODS\SOM-EPA-BM111617.M  
 Quant Title : SVOA CALIBRATION

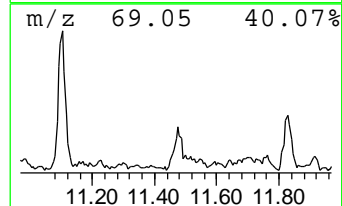
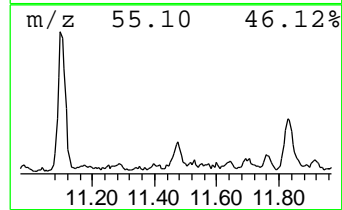
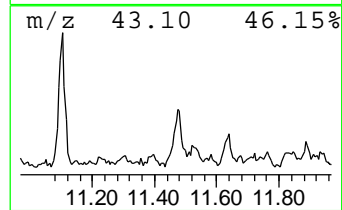
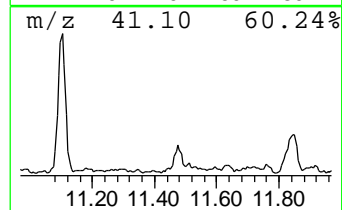
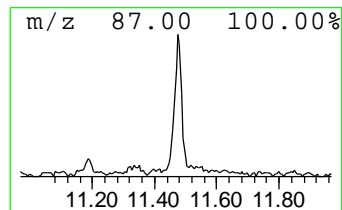
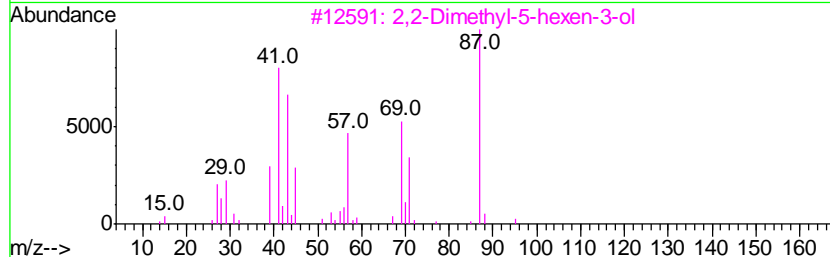
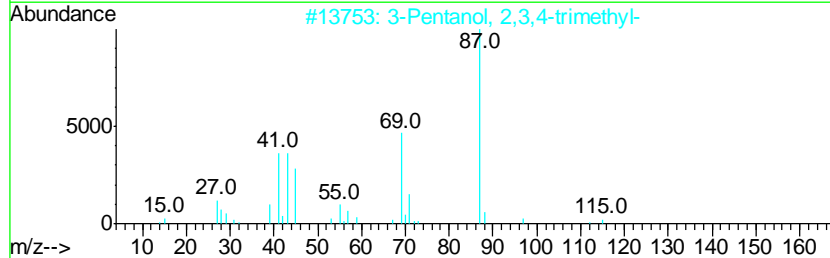
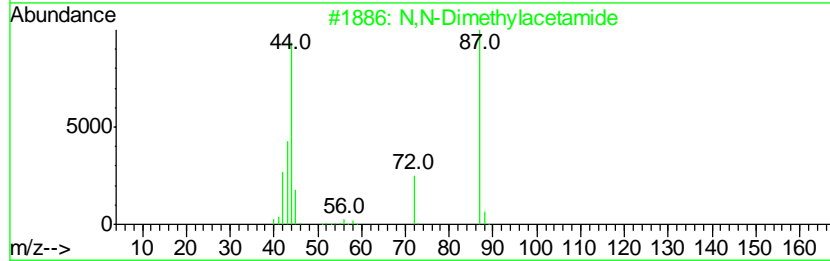
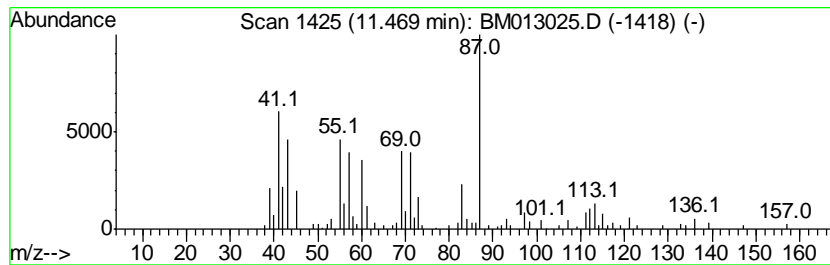
TIC Library : C:\DATABASE\NIST11.L  
 TIC Integration Parameters: LSCINT.P

\*\*\*\*\*  
 Peak Number 30 unknown-06 Concentration Rank 41

R.T.	EstConc	Area	Relative to ISTD	R.T.
11.47	3.49 ng/ul	264157	Naphthalene-d8	10.50

Hit#	of	Tentative ID	MW	MolForm	CAS#	Qual
1	5	N,N-Dimethylacetamide	87	C4H9NO	000127-19-5	47
2		3-Pentanol, 2,3,4-trimethyl-	130	C8H18O	003054-92-0	43
3		2,2-Dimethyl-5-hexen-3-ol	128	C8H16O	019550-89-1	38
4		2-Nonadecanone, O-methyloxime	311	C20H41NO	036379-39-2	38
5		.alpha.-D-Xylofuranoside, methyl...	192	C8H16O5	035007-52-4	38



Data Path : Z:\HPCHEM1\BNA M\DATA\BM111717\  
 Data File : BM013025.D  
 Acq On : 18 Nov 2017 06:18  
 Operator : SJ/JU  
 Sample : I6451-10  
 Misc :  
 ALS Vial : 35 Sample Multiplier: 1

Instrument :  
 BNA\_M  
 ClientSampleId :  
 BE2X3

Quant Method : Z:\HPCHEM1\BNA M\METHODS\SOM-EPA-BM111617.M  
 Quant Title : SVOA CALIBRATION

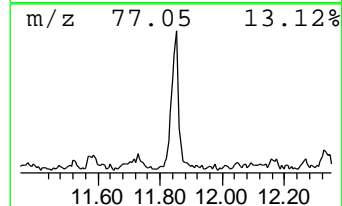
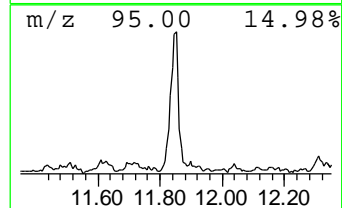
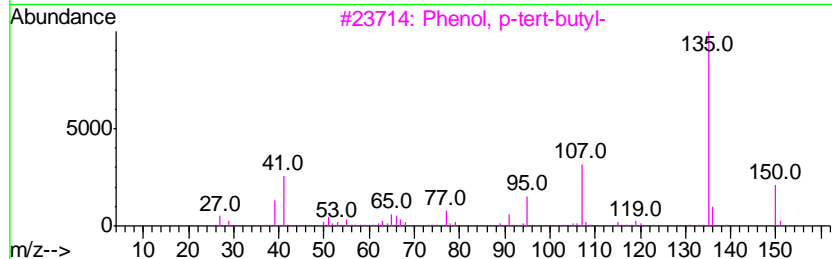
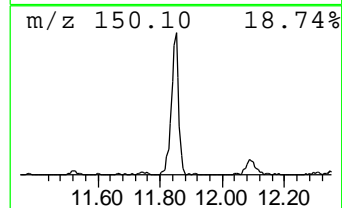
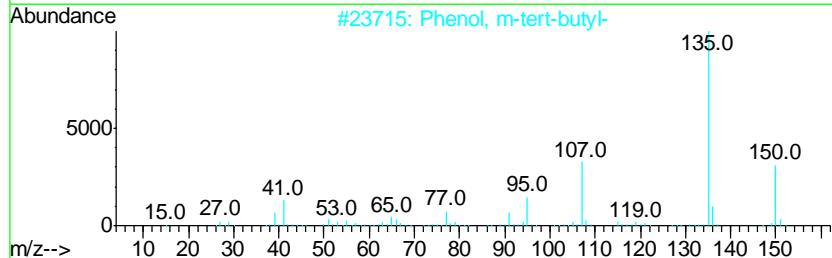
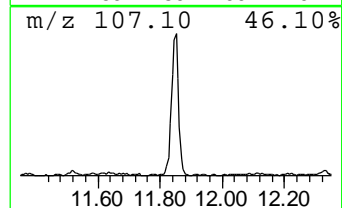
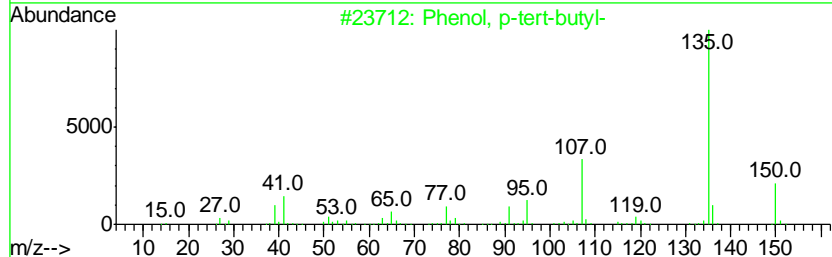
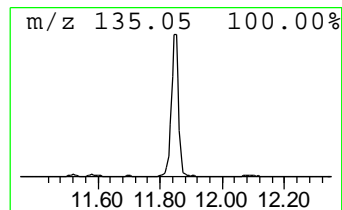
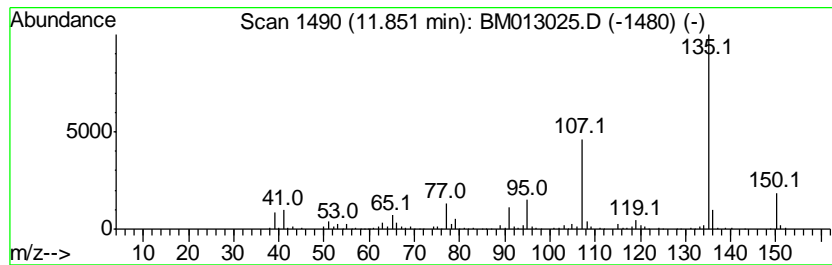
TIC Library : C:\DATABASE\NIST11.L  
 TIC Integration Parameters: LSCINT.P

\*\*\*\*\*  
 Peak Number 31 Phenol, p-tert-butyl- Concentration Rank 7

R.T.	EstConc	Area	Relative to ISTD	R.T.
11.85	17.33 ng/ul	1312090	Naphthalene-d8	10.50

Hit#	of	Tentative ID	MW	MolForm	CAS#	Qual
1	5	Phenol, p-tert-butyl-	150	C10H14O	000098-54-4	95
2		Phenol, m-tert-butyl-	150	C10H14O	000585-34-2	91
3		Phenol, p-tert-butyl-	150	C10H14O	000098-54-4	90
4		Phenol, m-tert-butyl-	150	C10H14O	000585-34-2	86
5		4-Hydroxy-2-methylacetophenone	150	C9H10O2	000875-59-2	83



Data Path : Z:\HPCHEM1\BNA M\DATA\BM111717\  
 Data File : BM013025.D  
 Acq On : 18 Nov 2017 06:18  
 Operator : SJ/JU  
 Sample : I6451-10  
 Misc :  
 ALS Vial : 35 Sample Multiplier: 1

Instrument :  
 BNA\_M  
 ClientSampled :  
 BE2X3

Quant Method : Z:\HPCHEM1\BNA M\METHODS\SOM-EPA-BM111617.M  
 Quant Title : SVOA CALIBRATION

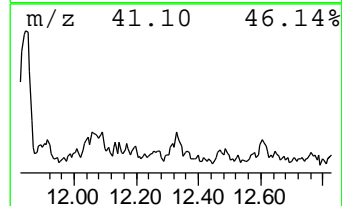
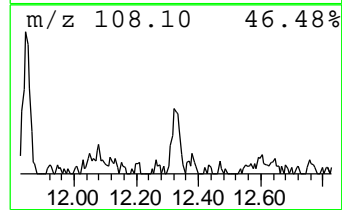
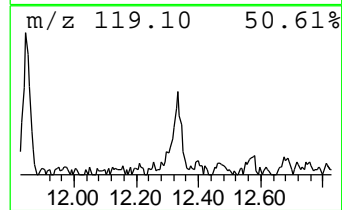
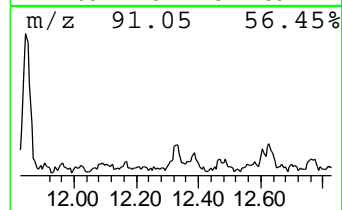
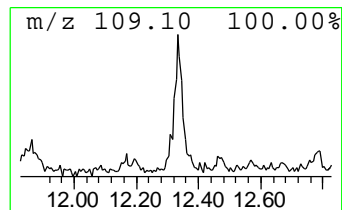
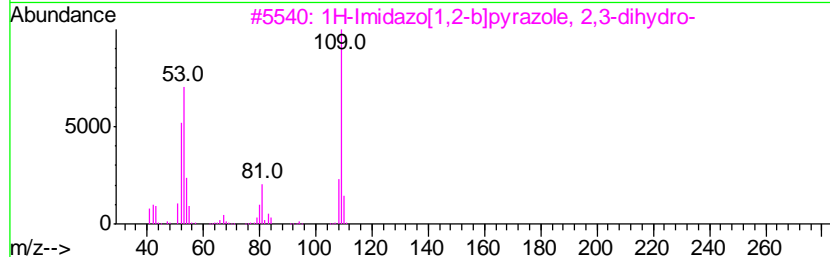
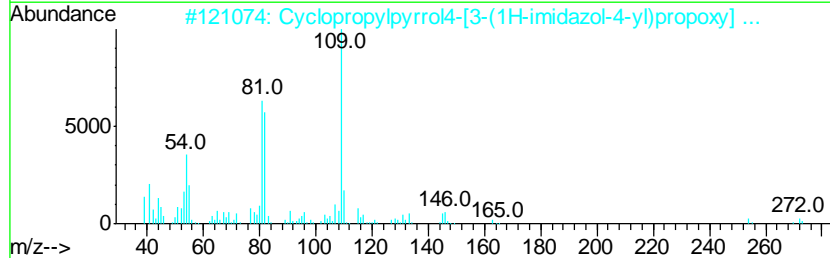
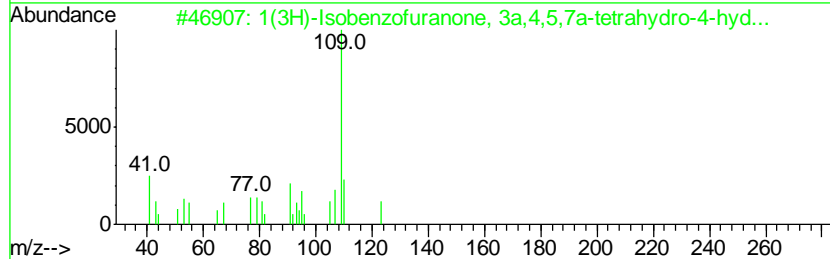
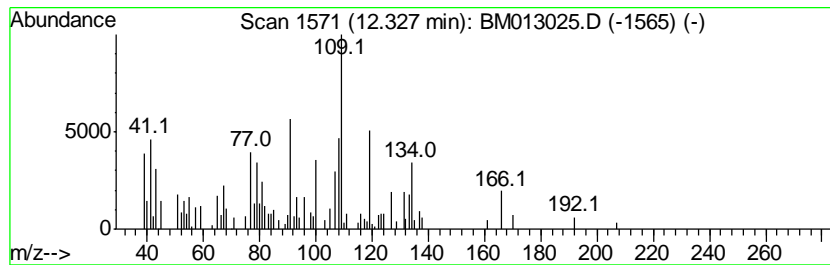
TIC Library : C:\DATABASE\NIST11.L  
 TIC Integration Parameters: LSCINT.P

\*\*\*\*\*  
 Peak Number 32 unknown-07 Concentration Rank 48

R.T.	EstConc	Area	Relative to ISTD	R.T.
12.33	2.85 ng/ul	215902	Napthalene-d8	10.50

Hit#	of	Tentative ID	MW	MolForm	CAS#	Qual
1	5	1(3H)-Isobenzofuranone, 3a,4,5,7...	182	C10H14O3	054346-06-4	35
2		Cyclopropylpyrrol4-[3-(1H-imidaz...	272	C16H20N2O2	1000311-87-7	32
3		1H-Imidazo[1,2-b]pyrazole, 2,3-d...	109	C5H7N3	006714-29-0	27
4		2(1H)-Pyridinone, 1-methyl-	109	C6H7NO	000694-85-9	27
5		3-Pyridinol, 6-methyl-	109	C6H7NO	001121-78-4	27



Data Path : Z:\HPCHEM1\BNA M\DATA\BM111717\  
 Data File : BM013025.D  
 Acq On : 18 Nov 2017 06:18  
 Operator : SJ/JU  
 Sample : I6451-10  
 Misc :  
 ALS Vial : 35 Sample Multiplier: 1

Instrument :  
 BNA\_M  
 ClientSampleId :  
 BE2X3

Quant Method : Z:\HPCHEM1\BNA M\METHODS\SOM-EPA-BM111617.M  
 Quant Title : SVOA CALIBRATION

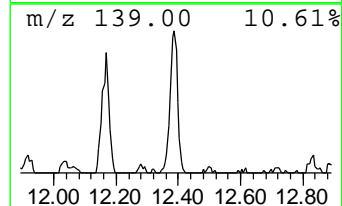
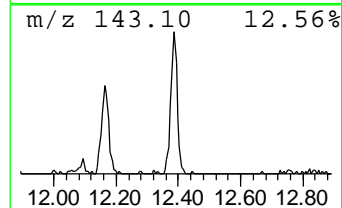
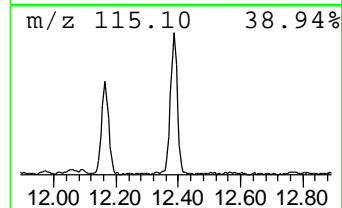
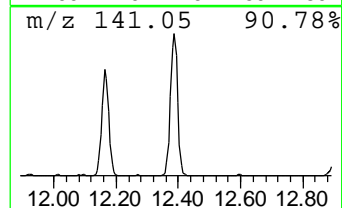
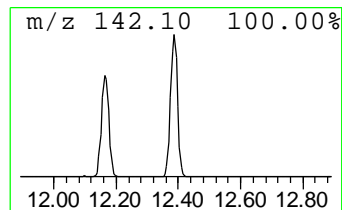
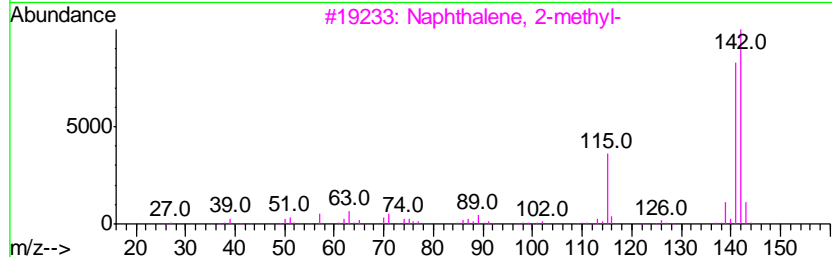
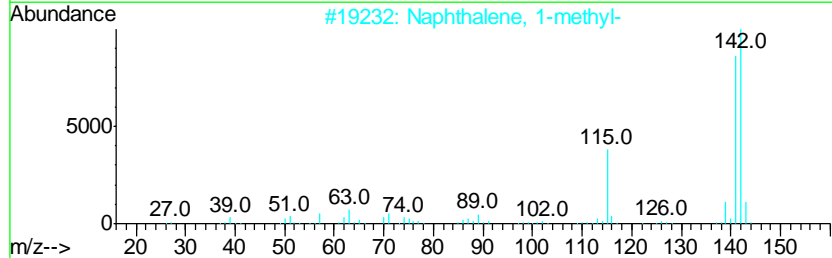
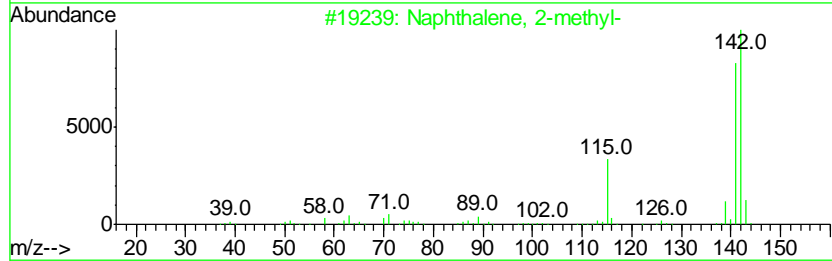
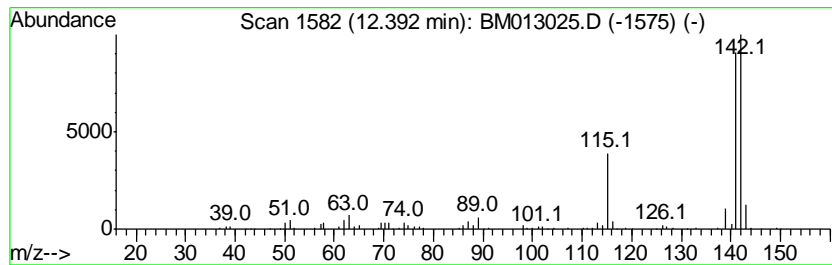
TIC Library : C:\DATABASE\NIST11.L  
 TIC Integration Parameters: LSCINT.P

\*\*\*\*\*  
 Peak Number 33 Naphthalene, 1-methyl- Concentration Rank 13

R.T.	EstConc	Area	Relative to ISTD	R.T.
12.39	11.53 ng/ul	873254	Naphthalene-d8	10.50

Hit#	of	Tentative ID	MW	MolForm	CAS#	Qual
1	5	Naphthalene, 2-methyl-	142	C11H10	000091-57-6	97
2		Naphthalene, 1-methyl-	142	C11H10	000090-12-0	96
3		Naphthalene, 2-methyl-	142	C11H10	000091-57-6	96
4		Naphthalene, 1-methyl-	142	C11H10	000090-12-0	94
5		1,4-Methanonaphthalene, 1,4-dihy...	142	C11H10	004453-90-1	94





Data Path : Z:\HPCHEM1\BNA\_M\DATA\BM111717\  
 Data File : BM013025.D  
 Acq On : 18 Nov 2017 06:18  
 Operator : SJ/JU  
 Sample : I6451-10  
 Misc :  
 ALS Vial : 35 Sample Multiplier: 1

Instrument :  
 BNA\_M  
 ClientSampleId :  
 BE2X3

Quant Method : Z:\HPCHEM1\BNA\_M\METHODS\SOM-EPA-BM111617.M  
 Quant Title : SVOA CALIBRATION

TIC Library : C:\DATABASE\NIST11.L  
 TIC Integration Parameters: LSCINT.P

TIC Top Hit name	RT	EstConc	Units	Response	--Internal Standard--			
					#	RT	Resp	Conc
Benzene, 1,3-dime...	5.39	90.0	ng/ul	5341140	1	7.72	1186630	20.0
(DEL) Alkane: Cyc...	5.46	4.0	ng/ul	236068	1	7.72	1186630	20.0
Benzene, (1-methy...	6.22	9.8	ng/ul	584196	1	7.72	1186630	20.0
3-Heptanone, 6-me...	6.40	7.9	ng/ul	468521	1	7.72	1186630	20.0
Benzene, propyl-	6.71	7.4	ng/ul	438936	1	7.72	1186630	20.0
Benzene, 1,2,3-tr...	7.37	12.6	ng/ul	746190	1	7.72	1186630	20.0
unknown-01	7.43	5.1	ng/ul	305188	1	7.72	1186630	20.0
unknown-02	7.92	8.5	ng/ul	506021	1	7.72	1186630	20.0
Indane	8.09	27.7	ng/ul	1643300	1	7.72	1186630	20.0
Benzene, 2-ethyl-...	8.36	3.5	ng/ul	210058	1	7.72	1186630	20.0
Benzene, 1-ethyl-...	8.82	6.9	ng/ul	411233	1	7.72	1186630	20.0
(DEL) Alkane: Cyc...	8.95	9.1	ng/ul	541788	1	7.72	1186630	20.0
Ethanol, 2-(hexyl...	9.04	11.6	ng/ul	690091	1	7.72	1186630	20.0
Triethyl phosphate	9.19	4.5	ng/ul	342402	2	10.50	1514410	20.0
o-Cymene	9.33	3.0	ng/ul	228310	2	10.50	1514410	20.0
unknown-03	9.50	3.5	ng/ul	263346	2	10.50	1514410	20.0
Benzene, 2-etheny...	9.75	2.8	ng/ul	210488	2	10.50	1514410	20.0
Cyclohexanemethan...	9.87	3.3	ng/ul	253148	2	10.50	1514410	20.0
4H-1,3-Benzodioxin	9.92	11.2	ng/ul	845809	2	10.50	1514410	20.0
Phenol, 2,6-dimet...	9.99	6.0	ng/ul	453483	2	10.50	1514410	20.0
unknown-04	10.25	5.4	ng/ul	405816	2	10.50	1514410	20.0
Benzo[b]thiophene	10.67	5.5	ng/ul	413842	2	10.50	1514410	20.0
unknown-05	10.90	10.0	ng/ul	756602	2	10.50	1514410	20.0
Cyclohexanone, 4-...	11.10	16.5	ng/ul	1248260	2	10.50	1514410	20.0
unknown-06	11.47	3.5	ng/ul	264157	2	10.50	1514410	20.0
Phenol, p-tert-bu...	11.85	17.3	ng/ul	1312090	2	10.50	1514410	20.0
unknown-07	12.33	2.9	ng/ul	215902	2	10.50	1514410	20.0
Naphthalene, 1-me...	12.39	11.5	ng/ul	873254	2	10.50	1514410	20.0