

Data Path : Z:\HPCHEM1\BNA M\DATA\BM111717\  
 Data File : BM013037.D  
 Acq On : 18 Nov 2017 13:22  
 Operator : SJ/JU  
 Sample : I6405-18 5X  
 Misc :  
 ALS Vial : 47 Sample Multiplier: 1

Instrument :  
 BNA\_M  
 ClientSampleId :  
 BE2T9

Integration Parameters: LSCINT.P

Integrator: RTE  
 Smoothing : OFF  
 Sampling : 1  
 Start Thrs: 0.2  
 Stop Thrs : 0

Filtering: 5  
 Min Area: 1 % of largest Peak  
 Max Peaks: 100  
 Peak Location: TOP

If leading or trailing edge < 100 prefer < Baseline drop else tangent >  
 Peak separation: 5

Method : Z:\HPCHEM1\BNA M\METHODS\SOM-EPA-BM111617.M  
 Title : SVOA CALIBRATION

Signal : TIC

peak #	R.T. min	first scan	max scan	last scan	PK TY	peak height	corr. area	corr. % max.	% of total
1	3.969	145	150	158	rVB	167882	211942	6.76%	0.390%
2	5.069	330	337	347	rVB	598336	878461	28.00%	1.617%
3	5.257	363	369	376	rVB	973228	1345426	42.89%	2.476%
4	5.387	385	391	400	rBV	1760894	2758767	87.94%	5.077%
5	5.463	400	404	409	rVB3	84449	120884	3.85%	0.222%
6	5.752	446	453	459	rBV	412308	606778	19.34%	1.117%
7	6.222	523	533	540	rBV	224093	376536	12.00%	0.693%
8	6.399	554	563	569	rBV2	126060	271898	8.67%	0.500%
9	6.710	605	616	623	rBV	98340	184496	5.88%	0.340%
10	6.851	636	640	644	rVV3	113120	193023	6.15%	0.355%
11	6.946	651	656	661	rVB2	67133	110230	3.51%	0.203%
12	7.057	669	675	679	rBV	147148	231680	7.38%	0.426%
13	7.110	679	684	688	rVV	95319	153695	4.90%	0.283%
14	7.251	702	708	717	rBV2	193445	377659	12.04%	0.695%
15	7.369	722	728	733	rBV	274329	428229	13.65%	0.788%
16	7.422	733	737	742	rVB4	101912	161894	5.16%	0.298%
17	7.634	763	773	778	rVB6	48579	126447	4.03%	0.233%
18	7.716	778	787	799	rBV	825286	1478668	47.13%	2.721%
19	7.828	799	806	816	rVB	152166	255405	8.14%	0.470%
20	7.916	816	821	827	rBV2	185901	271868	8.67%	0.500%
21	8.087	841	850	856	rVB2	550369	1115220	35.55%	2.052%
22	8.257	874	879	886	rVB2	50441	104938	3.34%	0.193%
23	8.416	900	906	914	rVB2	154313	256379	8.17%	0.472%
24	8.616	936	940	945	rBV4	66057	106482	3.39%	0.196%
25	8.816	968	974	978	rBV2	126294	194075	6.19%	0.357%
26	8.869	978	983	991	rVV	214009	454516	14.49%	0.836%
27	8.945	991	996	1009	rVB5	177433	371348	11.84%	0.683%
28	9.187	1032	1037	1042	rVV	74353	124218	3.96%	0.229%
29	9.334	1054	1062	1067	rVB	64692	117872	3.76%	0.217%
30	9.504	1084	1091	1093	rBV	76418	126075	4.02%	0.232%
31	9.581	1099	1104	1109	rBV	154666	271955	8.67%	0.500%
32	9.751	1125	1133	1138	rBV3	99542	182367	5.81%	0.336%
33	9.869	1148	1153	1156	rBV	101190	168461	5.37%	0.310%
34	9.916	1156	1161	1169	rVV6	231581	532468	16.97%	0.980%

Data Path : Z:\HPCHEM1\BNA M\DATA\BM111717\  
 Data File : BM013037.D  
 Acq On : 18 Nov 2017 13:22  
 Operator : SJ/JU  
 Sample : I6405-18 5X  
 Misc :  
 ALS Vial : 47 Sample Multiplier: 1

Instrument :  
 BNA\_M  
 ClientSampleId :  
 BE2T9

## Integration Parameters: LSCINT.P

Integrator: RTE  
 Smoothing : OFF  
 Sampling : 1  
 Start Thrs: 0.2  
 Stop Thrs : 0

Filtering: 5  
 Min Area: 1 % of largest Peak  
 Max Peaks: 100  
 Peak Location: TOP

If leading or trailing edge < 100 prefer < Baseline drop else tangent >  
 Peak separation: 5

Method : Z:\HPCHEM1\BNA M\METHODS\SOM-EPA-BM111617.M  
 Title : SVOA CALIBRATION

35	9.987	1169	1173	1180	rVV4	142207	291494	9.29%	0.536%
36	10.039	1180	1182	1188	rVB5	63782	104029	3.32%	0.191%
37	10.122	1188	1196	1203	rBV	285115	492704	15.71%	0.907%
38	10.239	1212	1216	1224	rVB	141187	267855	8.54%	0.493%
39	10.316	1224	1229	1233	rBV5	61858	110787	3.53%	0.204%
40	10.498	1253	1260	1264	rVV	1023269	1747242	55.69%	3.216%
41	10.551	1264	1269	1277	rVV	1489382	2556847	81.50%	4.706%
42	10.669	1281	1289	1300	rVB4	107944	296332	9.45%	0.545%
43	10.898	1319	1328	1336	rVB3	217542	518402	16.52%	0.954%
44	11.098	1356	1362	1369	rBV	505415	859711	27.40%	1.582%
45	11.463	1418	1424	1429	rBV2	68409	117833	3.76%	0.217%
46	11.845	1480	1489	1494	rBV	428349	763861	24.35%	1.406%
47	12.163	1535	1543	1553	rVB	330642	533103	16.99%	0.981%
48	12.333	1565	1572	1575	rVV4	71703	153077	4.88%	0.282%
49	12.380	1575	1580	1590	rVB	405907	701574	22.36%	1.291%
50	12.998	1680	1685	1690	rVB	407200	550634	17.55%	1.013%
51	13.410	1751	1755	1760	rVB2	68546	109566	3.49%	0.202%
52	13.675	1793	1800	1805	rVB2	71980	134810	4.30%	0.248%
53	13.769	1811	1816	1823	rVV	565396	883457	28.16%	1.626%
54	13.851	1823	1830	1836	rVV	965764	1658472	52.86%	3.052%
55	13.904	1836	1839	1844	rVV3	69563	114888	3.66%	0.211%
56	14.045	1858	1863	1871	rVB	650081	925591	29.50%	1.703%
57	14.139	1872	1879	1886	rBV	72715	146193	4.66%	0.269%
58	14.357	1908	1916	1921	rBV2	1480795	2395112	76.34%	4.408%
59	14.416	1921	1926	1931	rVB2	166705	347191	11.07%	0.639%
60	14.757	1977	1984	1992	rVB8	73740	159438	5.08%	0.293%
61	15.351	2080	2085	2092	rBV2	774019	1253595	39.96%	2.307%
62	15.463	2097	2104	2109	rBV3	180735	311880	9.94%	0.574%
63	15.651	2132	2136	2142	rVB5	79969	128308	4.09%	0.236%
64	15.857	2166	2171	2183	rBV6	186175	568160	18.11%	1.046%
65	16.033	2195	2201	2206	rVV3	170148	343862	10.96%	0.633%
66	16.086	2206	2210	2222	rVB3	86412	220294	7.02%	0.405%
67	16.368	2254	2258	2262	rVV3	63010	104689	3.34%	0.193%
68	16.574	2288	2293	2297	rVV2	102645	148824	4.74%	0.274%
69	16.627	2297	2302	2310	rVB5	81247	196602	6.27%	0.362%
70	16.857	2335	2341	2346	rVB9	64660	116094	3.70%	0.214%
71	17.104	2376	2383	2388	rBV	1892201	2675719	85.29%	4.924%

Data Path : Z:\HPCHEM1\BNA M\DATA\BM111717\  
 Data File : BM013037.D  
 Acq On : 18 Nov 2017 13:22  
 Operator : SJ/JU  
 Sample : I6405-18 5X  
 Misc :  
 ALS Vial : 47 Sample Multiplier: 1

Instrument :  
 BNA\_M  
 ClientSampleId :  
 BE2T9

## Integration Parameters: LSCINT.P

Integrator: RTE  
 Smoothing : OFF  
 Sampling : 1  
 Start Thrs: 0.2  
 Stop Thrs : 0

Filtering: 5  
 Min Area: 1 % of largest Peak  
 Max Peaks: 100  
 Peak Location: TOP

If leading or trailing edge < 100 prefer < Baseline drop else tangent >  
 Peak separation: 5

Method : Z:\HPCHEM1\BNA M\METHODS\SOM-EPA-BM111617.M  
 Title : SVOA CALIBRATION

72	17.198	2394	2399	2405	rVB	778571	1101209	35.10%	2.027%
73	17.274	2408	2412	2420	rVV3	97317	149283	4.76%	0.275%
74	17.480	2444	2447	2453	rVV	146869	194408	6.20%	0.358%
75	17.545	2453	2458	2462	rVV3	86447	116812	3.72%	0.215%
76	17.598	2463	2467	2470	rVV	89464	117298	3.74%	0.216%
77	17.639	2470	2474	2485	rVV	309774	450586	14.36%	0.829%
78	17.774	2491	2497	2502	rBV3	149330	224893	7.17%	0.414%
79	18.145	2555	2560	2571	rVB	208301	366001	11.67%	0.674%
80	18.245	2572	2577	2580	rVV2	165898	268362	8.55%	0.494%
81	18.292	2580	2585	2591	rVB	385258	647289	20.63%	1.191%
82	18.927	2688	2693	2697	rBV4	81577	115558	3.68%	0.213%
83	19.004	2703	2706	2712	rVB3	130639	180880	5.77%	0.333%
84	19.233	2738	2745	2750	rBV3	180935	378664	12.07%	0.697%
85	19.492	2784	2789	2794	rBV	897067	1220331	38.90%	2.246%
86	19.551	2794	2799	2803	rBV	808977	1032371	32.91%	1.900%
87	19.709	2823	2826	2829	rVV	92416	116155	3.70%	0.214%
88	19.745	2829	2832	2836	rVV2	206876	262873	8.38%	0.484%
89	19.786	2836	2839	2845	rVB4	86480	122781	3.91%	0.226%
90	19.904	2854	2859	2863	rBV4	102452	158350	5.05%	0.291%
91	19.945	2863	2866	2871	rVB	114968	148372	4.73%	0.273%
92	19.998	2871	2875	2879	rBV6	117207	152269	4.85%	0.280%
93	20.227	2911	2914	2920	rVB	104710	135397	4.32%	0.249%
94	20.627	2978	2982	2986	rVB	234826	262367	8.36%	0.483%
95	21.203	3076	3080	3083	rBV	219750	261118	8.32%	0.481%
96	21.239	3083	3086	3089	rVV	132001	141956	4.52%	0.261%
97	21.286	3089	3094	3102	rVV	2610173	3137230	100.00%	5.774%
98	21.409	3110	3115	3122	rBV	764477	977120	31.15%	1.798%
99	23.374	3443	3449	3458	rBV2	677563	1180662	37.63%	2.173%
100	23.521	3466	3474	3487	rVB	1568291	3038204	96.84%	5.591%

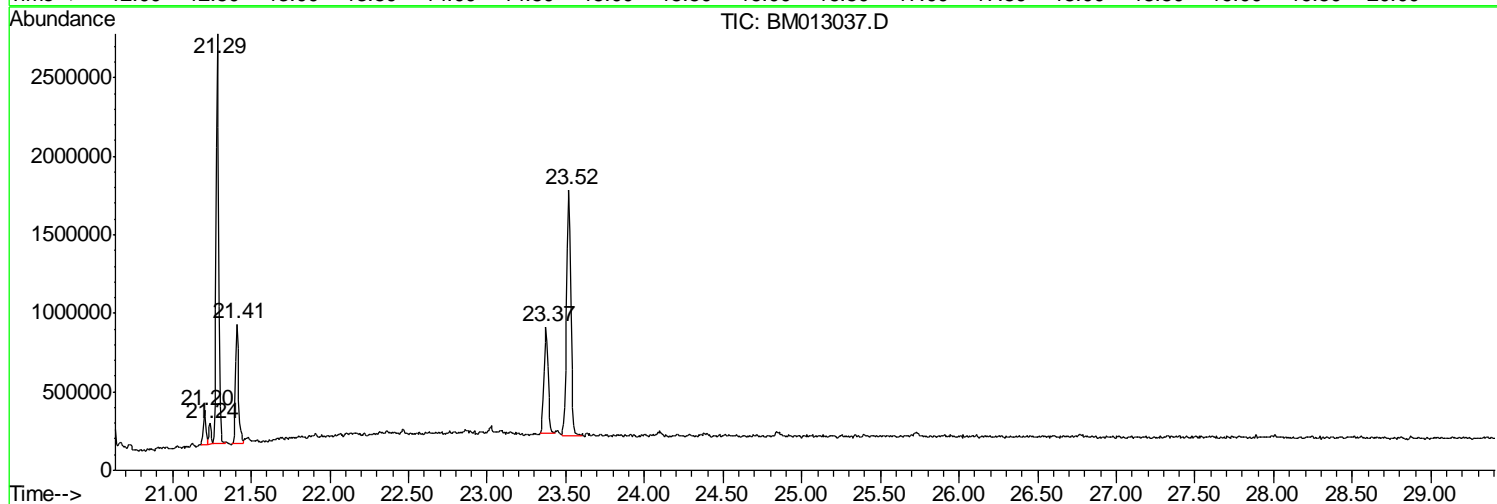
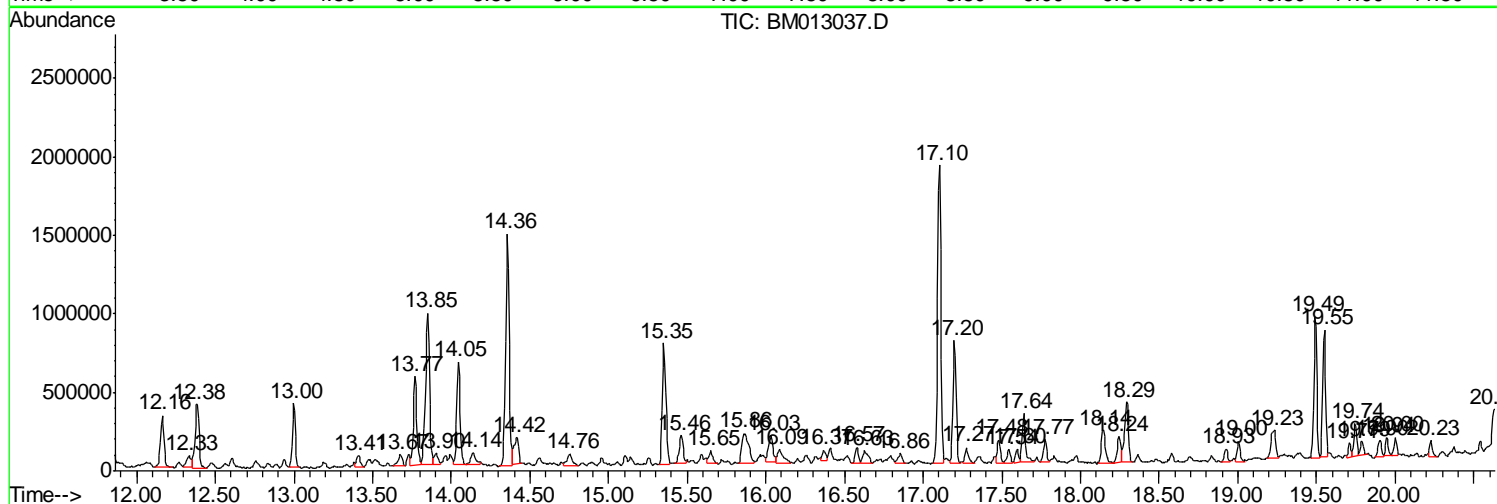
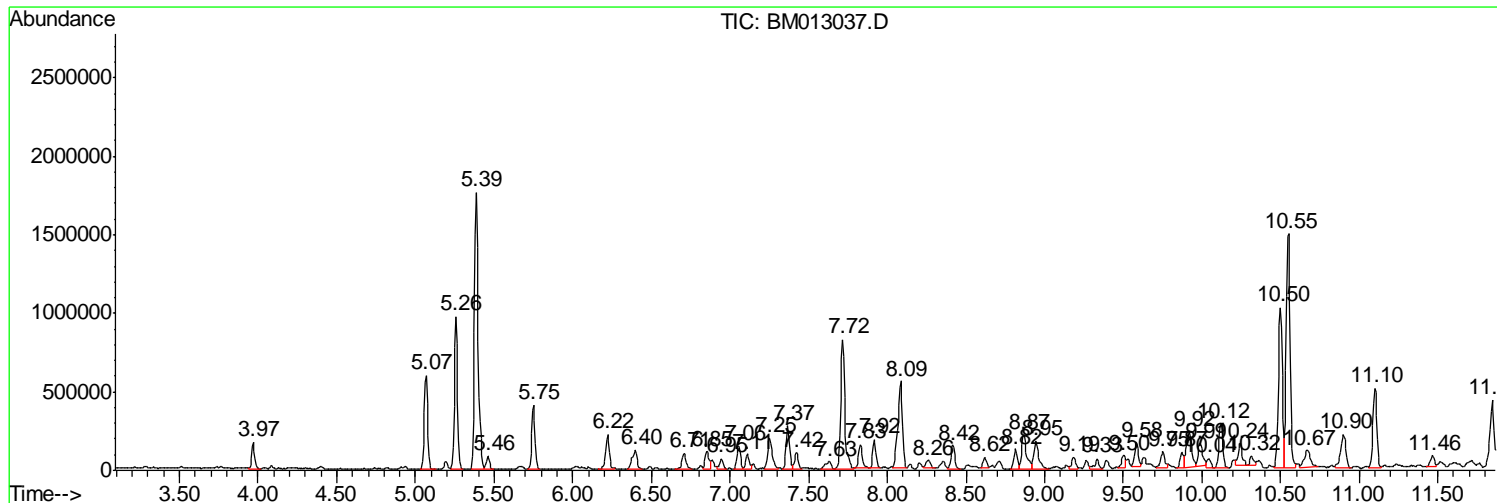
Sum of corrected areas: 54337389

Data Path : Z:\HPCHEM1\BNA M\DATA\BM111717\  
 Data File : BM013037.D  
 Acq On : 18 Nov 2017 13:22  
 Operator : SJ/JU  
 Sample : I6405-18 5X  
 Misc :  
 ALS Vial : 47 Sample Multiplier: 1

Instrument :  
 BNA\_M  
 ClientSampled :  
 BE2T9

Quant Method : Z:\HPCHEM1\BNA M\METHODS\SOM-EPA-BM111617.M  
 Quant Title : SVOA CALIBRATION

TIC Library : C:\DATABASE\NIST11.L  
 TIC Integration Parameters: LSCINT.P



Data Path : Z:\HPCHEM1\BNA M\DATA\BM111717\  
 Data File : BM013037.D  
 Acq On : 18 Nov 2017 13:22  
 Operator : SJ/JU  
 Sample : I6405-18 5X  
 Misc :  
 ALS Vial : 47 Sample Multiplier: 1

Instrument :  
 BNA\_M  
 ClientSampled :  
 BE2T9

Quant Method : Z:\HPCHEM1\BNA M\METHODS\SOM-EPA-BM111617.M  
 Quant Title : SVOA CALIBRATION

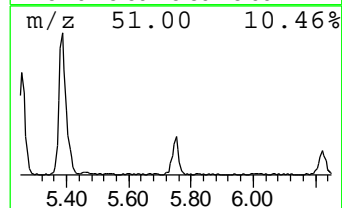
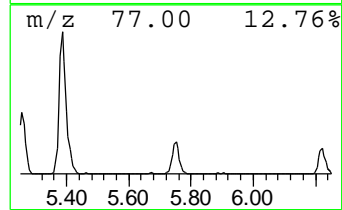
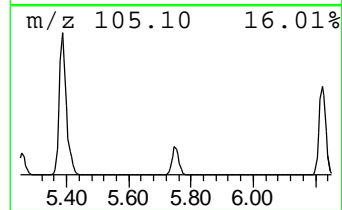
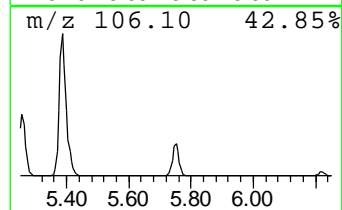
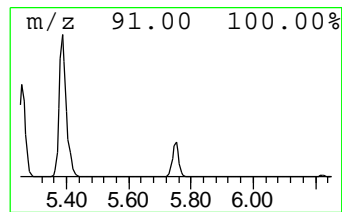
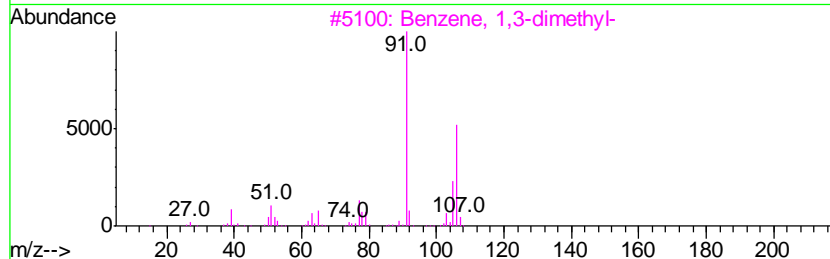
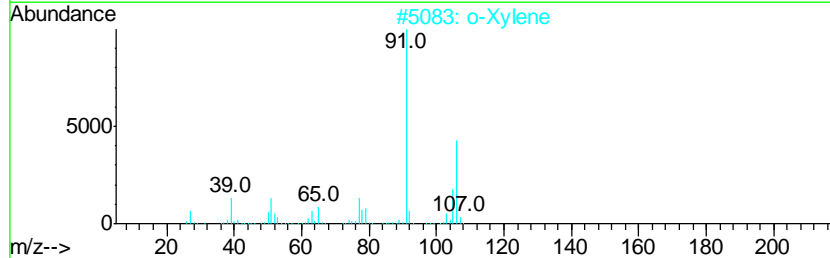
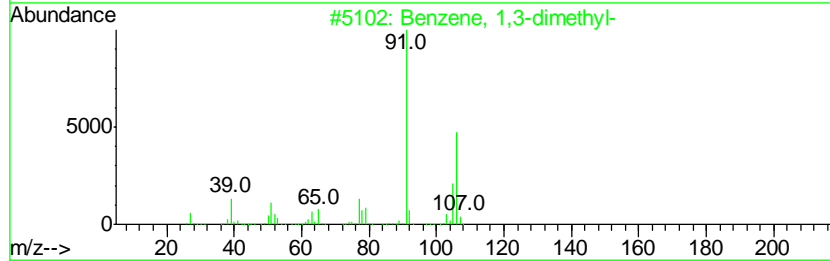
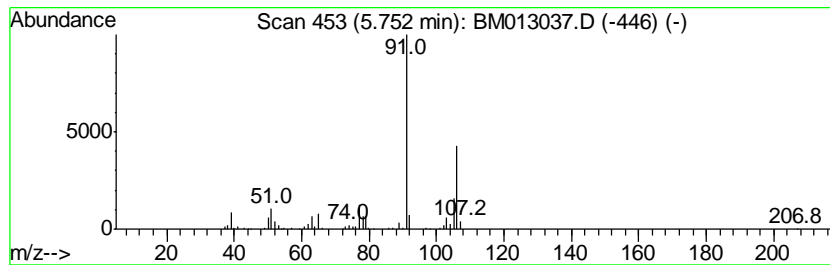
TIC Library : C:\DATABASE\NIST11.L  
 TIC Integration Parameters: LSCINT.P

\*\*\*\*\*  
 Peak Number 5 Benzene, 1,3-dimethyl- Concentration Rank 8

R.T.	EstConc	Area	Relative to ISTD	R.T.
5.75	8.21 ng/ul	606778	1,4-Dichlorobenzene-d4	7.72

Hit#	of	Tentative ID	MW	MolForm	CAS#	Qual
1	5	Benzene, 1,3-dimethyl-	106	C8H10	000108-38-3	97
2		o-Xylene	106	C8H10	000095-47-6	97
3		Benzene, 1,3-dimethyl-	106	C8H10	000108-38-3	97
4		o-Xylene	106	C8H10	000095-47-6	97
5		p-Xylene	106	C8H10	000106-42-3	95



Data Path : Z:\HPCHEM1\BNA M\DATA\BM111717\  
 Data File : BM013037.D  
 Acq On : 18 Nov 2017 13:22  
 Operator : SJ/JU  
 Sample : I6405-18 5X  
 Misc :  
 ALS Vial : 47 Sample Multiplier: 1

Instrument :  
 BNA\_M  
 ClientSampleId :  
 BE2T9

Quant Method : Z:\HPCHEM1\BNA M\METHODS\SOM-EPA-BM111617.M  
 Quant Title : SVOA CALIBRATION

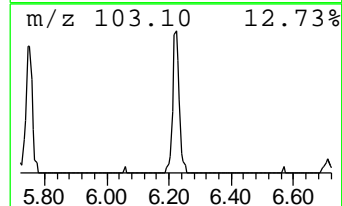
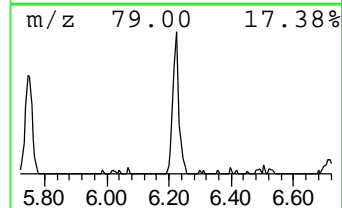
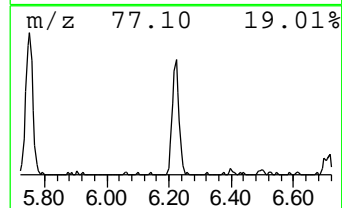
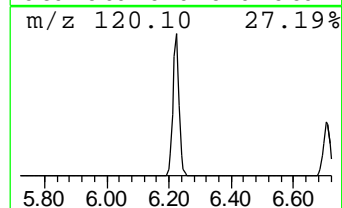
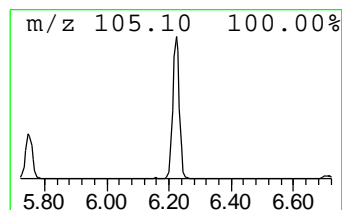
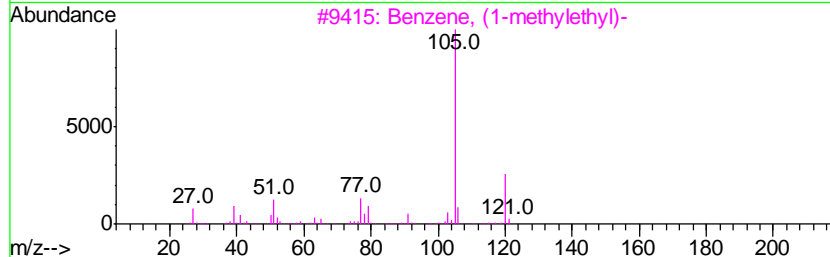
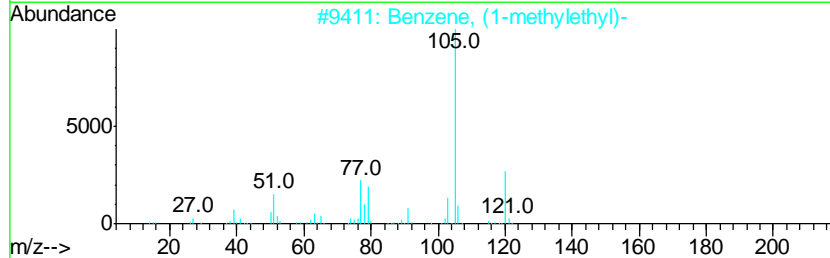
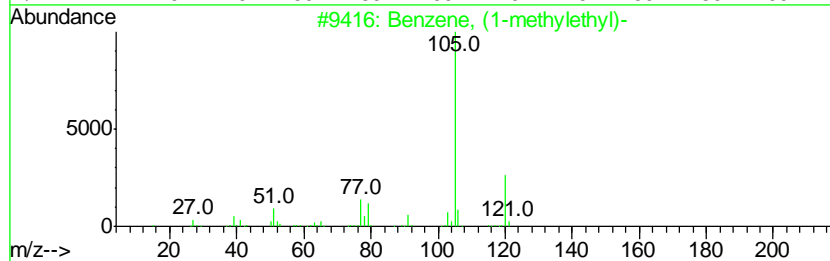
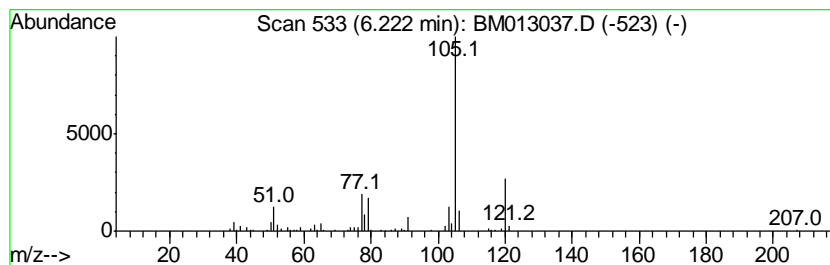
TIC Library : C:\DATABASE\NIST11.L  
 TIC Integration Parameters: LSCINT.P

\*\*\*\*\*  
 Peak Number 6 Benzene, (1-methylethyl)- Concentration Rank 15

R.T.	EstConc	Area	Relative to ISTD	R.T.
6.22	5.09 ng/ul	376536	1,4-Dichlorobenzene-d4	7.72

Hit#	of	Tentative ID	MW	MolForm	CAS#	Qual
1	5	Benzene, (1-methylethyl)-	120	C9H12	000098-82-8	94
2		Benzene, (1-methylethyl)-	120	C9H12	000098-82-8	93
3		Benzene, (1-methylethyl)-	120	C9H12	000098-82-8	91
4		Benzene, (1-methylethyl)-	120	C9H12	000098-82-8	91
5		Benzene, 1,2,3-trimethyl-	120	C9H12	000526-73-8	91



Data Path : Z:\HPCHEM1\BNA M\DATA\BM111717\  
 Data File : BM013037.D  
 Acq On : 18 Nov 2017 13:22  
 Operator : SJ/JU  
 Sample : I6405-18 5X  
 Misc :  
 ALS Vial : 47 Sample Multiplier: 1

Instrument :  
 BNA\_M  
 ClientSampled :  
 BE2T9

Quant Method : Z:\HPCHEM1\BNA M\METHODS\SOM-EPA-BM111617.M  
 Quant Title : SVOA CALIBRATION

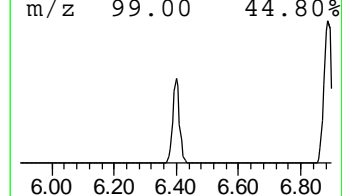
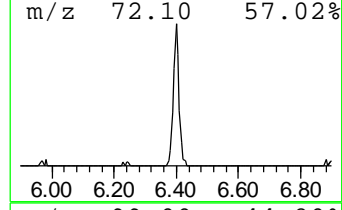
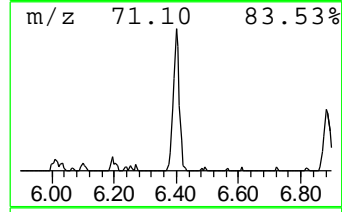
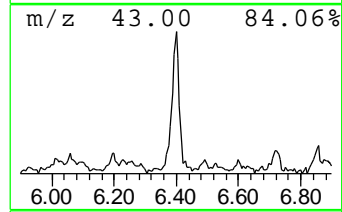
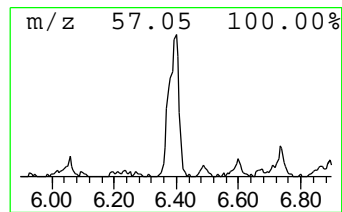
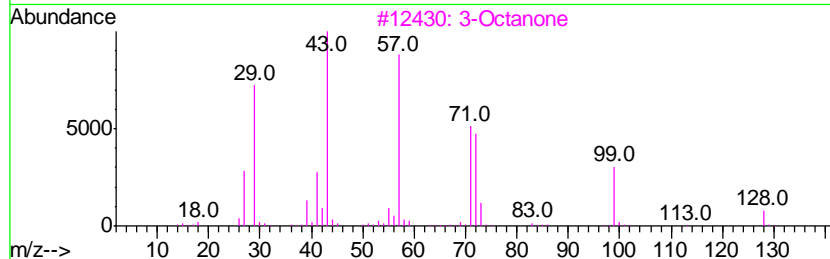
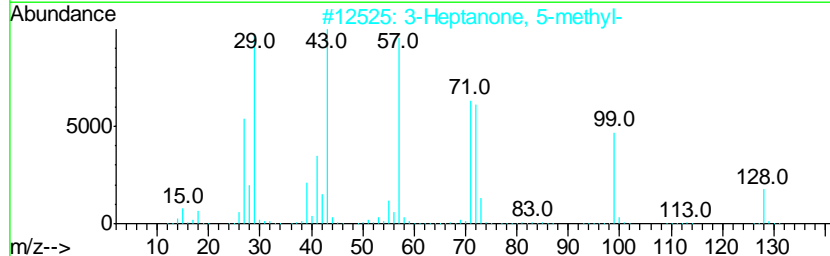
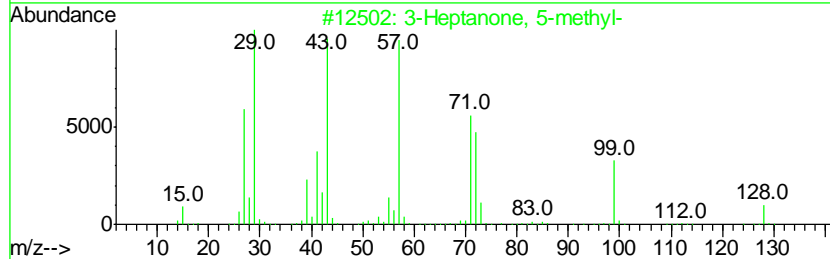
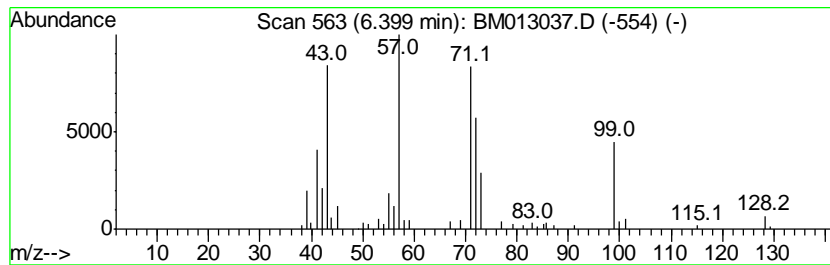
TIC Library : C:\DATABASE\NIST11.L  
 TIC Integration Parameters: LSCINT.P

\*\*\*\*\*  
 Peak Number 7 3-Heptanone, 5-methyl- Concentration Rank 20

R.T.	EstConc	Area	Relative to ISTD	R.T.
6.40	3.68 ng/ul	271898	1,4-Dichlorobenzene-d4	7.72

Hit#	of	Tentative ID	MW	MolForm	CAS#	Qual
1	5	3-Heptanone, 5-methyl-	128	C8H16O	000541-85-5	80
2		3-Heptanone, 5-methyl-	128	C8H16O	000541-85-5	72
3		3-Octanone	128	C8H16O	000106-68-3	72
4		3-Heptanone, 5-methyl-	128	C8H16O	000541-85-5	64
5		3-Octanone	128	C8H16O	000106-68-3	53



Data Path : Z:\HPCHEM1\BNA M\DATA\BM111717\  
 Data File : BM013037.D  
 Acq On : 18 Nov 2017 13:22  
 Operator : SJ/JU  
 Sample : I6405-18 5X  
 Misc :  
 ALS Vial : 47 Sample Multiplier: 1

Instrument :  
 BNA\_M  
 ClientSampled :  
 BE2T9

Quant Method : Z:\HPCHEM1\BNA M\METHODS\SOM-EPA-BM111617.M  
 Quant Title : SVOA CALIBRATION

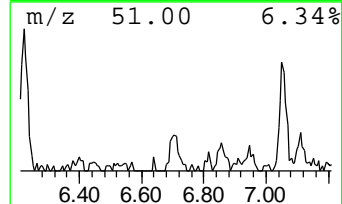
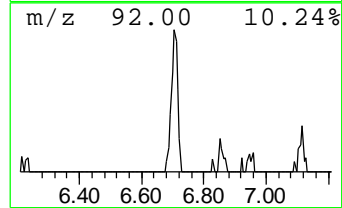
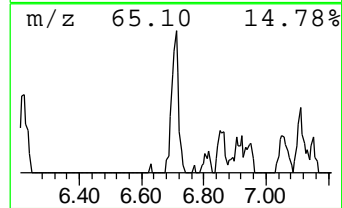
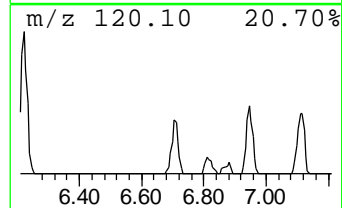
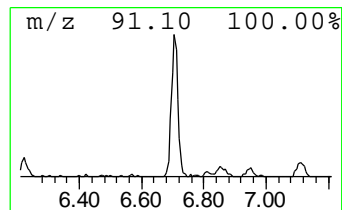
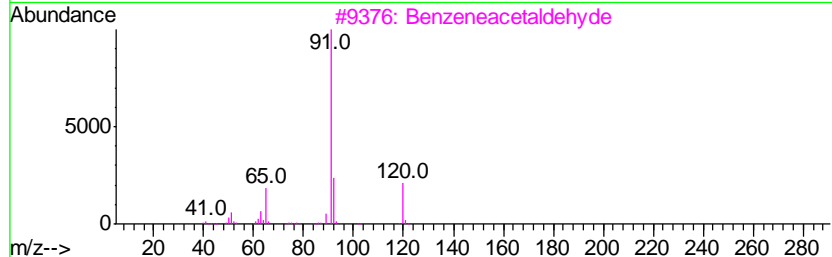
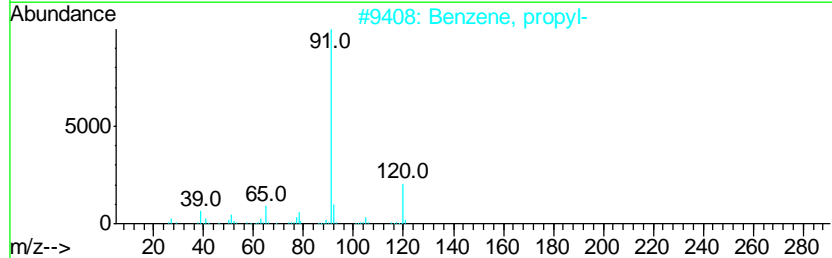
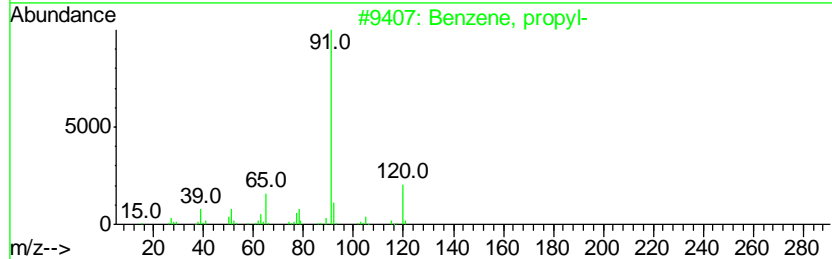
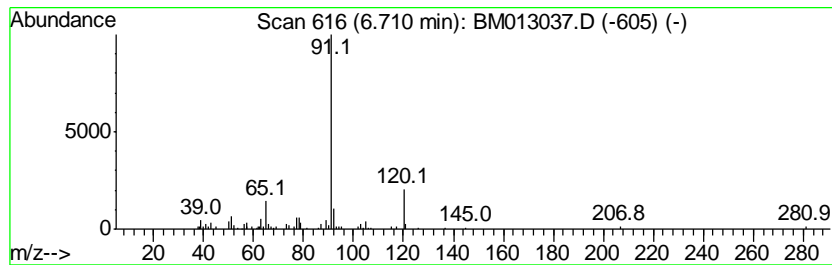
TIC Library : C:\DATABASE\NIST11.L  
 TIC Integration Parameters: LSCINT.P

\*\*\*\*\*  
 Peak Number 8 Benzene, propyl- Concentration Rank 31

R.T.	EstConc	Area	Relative to ISTD	R.T.
6.71	2.50 ng/ul	184496	1,4-Dichlorobenzene-d4	7.72

Hit#	of	Tentative ID	MW	MolForm	CAS#	Qual
1	5	Benzene, propyl-	120	C9H12	000103-65-1	93
2		Benzene, propyl-	120	C9H12	000103-65-1	83
3		Benzeneacetaldehyde	120	C8H8O	000122-78-1	70
4		Benzeneacetaldehyde	120	C8H8O	000122-78-1	62
5		Benzeneacetaldehyde	120	C8H8O	000122-78-1	58





Data Path : Z:\HPCHEM1\BNA M\DATA\BM111717\  
 Data File : BM013037.D  
 Acq On : 18 Nov 2017 13:22  
 Operator : SJ/JU  
 Sample : I6405-18 5X  
 Misc :  
 ALS Vial : 47 Sample Multiplier: 1

Instrument :  
 BNA\_M  
 ClientSampled :  
 BE2T9

Quant Method : Z:\HPCHEM1\BNA M\METHODS\SOM-EPA-BM111617.M  
 Quant Title : SVOA CALIBRATION

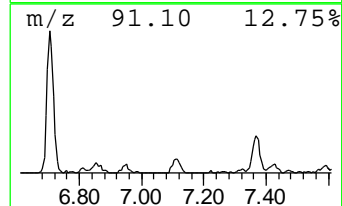
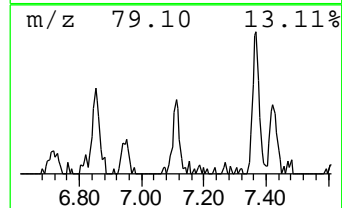
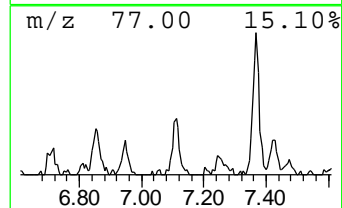
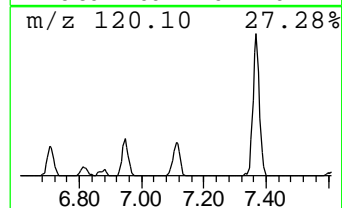
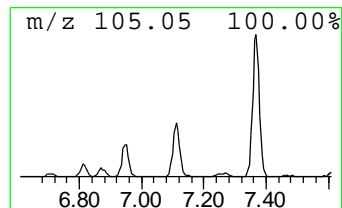
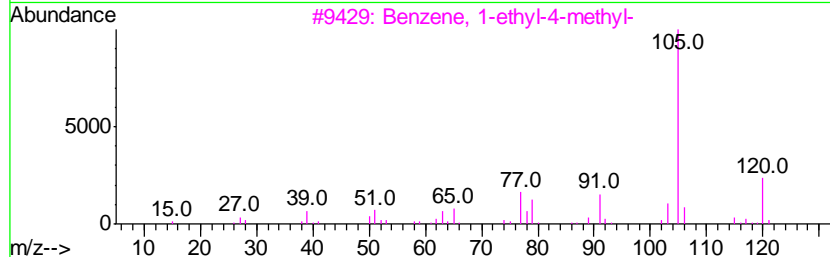
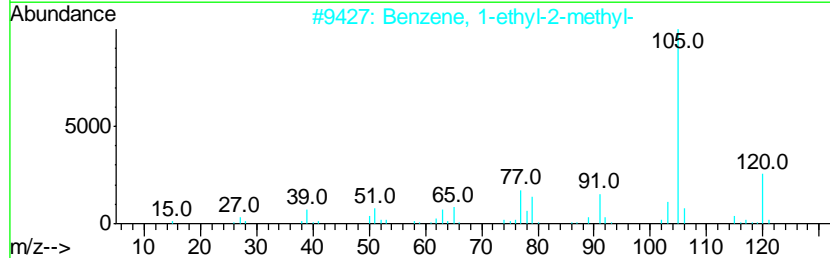
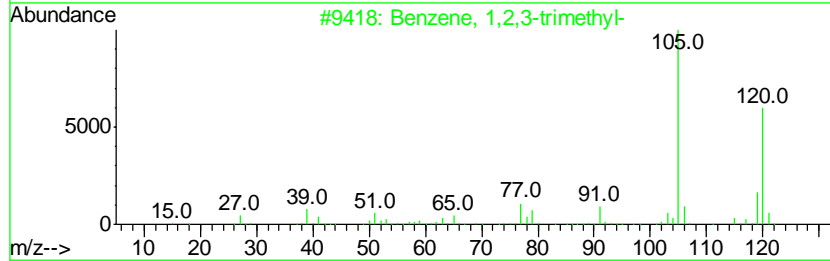
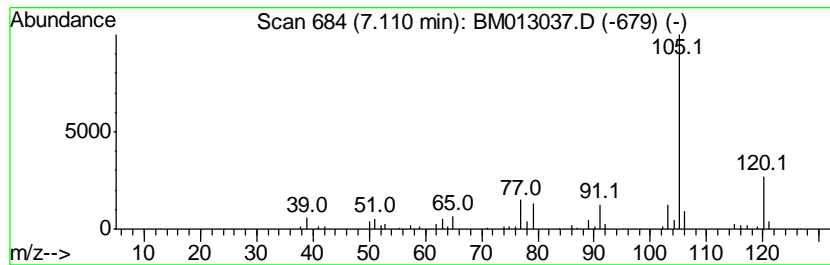
TIC Library : C:\DATABASE\NIST11.L  
 TIC Integration Parameters: LSCINT.P

\*\*\*\*\*  
 Peak Number 9 Benzene, 1,2,3-trimethyl- Concentration Rank 35

R.T.	EstConc	Area	Relative to ISTD	R.T.
7.11	2.08 ng/ul	153695	1,4-Dichlorobenzene-d4	7.72

Hit#	of	Tentative ID	MW	MolForm	CAS#	Qual
1	5	Benzene, 1,2,3-trimethyl-	120	C9H12	000526-73-8	91
2		Benzene, 1-ethyl-2-methyl-	120	C9H12	000611-14-3	91
3		Benzene, 1-ethyl-4-methyl-	120	C9H12	000622-96-8	91
4		Benzene, 1-ethyl-2-methyl-	120	C9H12	000611-14-3	90
5		Benzene, (1-methylethyl)-	120	C9H12	000098-82-8	90



Data Path : Z:\HPCHEM1\BNA M\DATA\BM111717\  
 Data File : BM013037.D  
 Acq On : 18 Nov 2017 13:22  
 Operator : SJ/JU  
 Sample : I6405-18 5X  
 Misc :  
 ALS Vial : 47 Sample Multiplier: 1

Instrument :  
 BNA\_M  
 ClientSampleId :  
 BE2T9

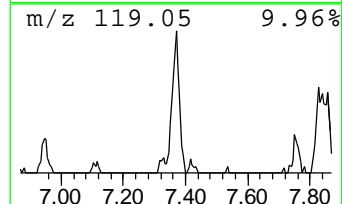
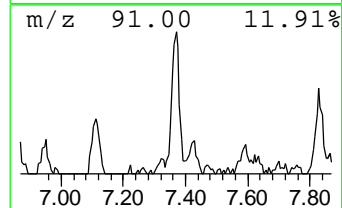
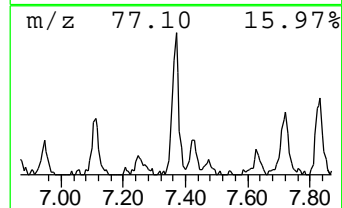
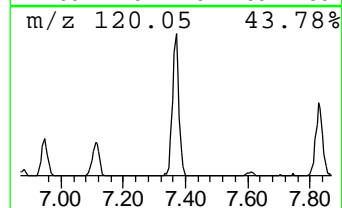
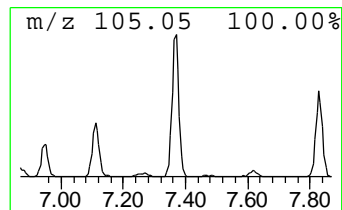
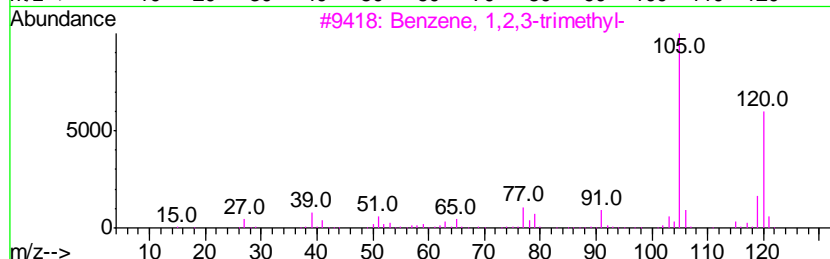
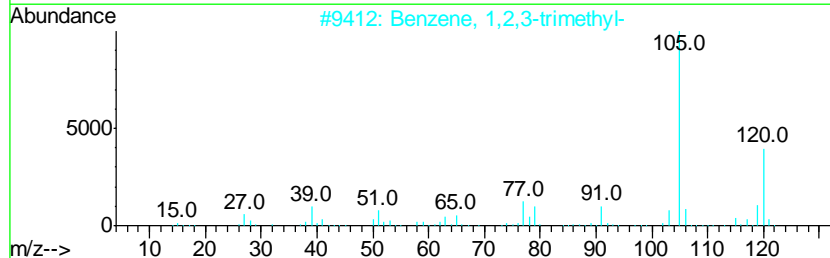
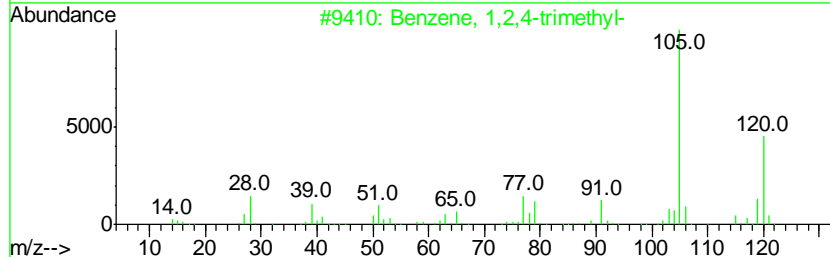
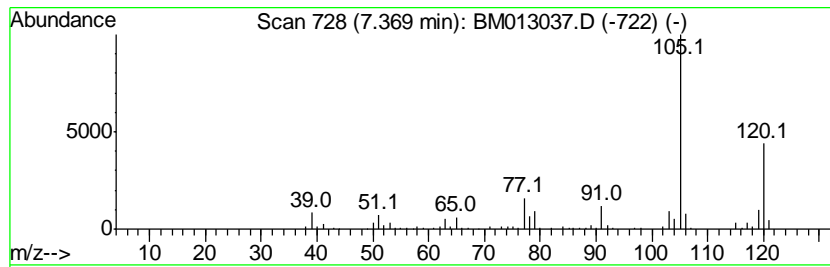
Quant Method : Z:\HPCHEM1\BNA M\METHODS\SOM-EPA-BM111617.M  
 Quant Title : SVOA CALIBRATION

TIC Library : C:\DATABASE\NIST11.L  
 TIC Integration Parameters: LSCINT.P

\*\*\*\*\*  
 Peak Number 10 Benzene, 1,2,4-trimethyl- Concentration Rank 14

R.T.	EstConc	Area	Relative to ISTD	R.T.
7.37	5.79 ng/ul	428229	1,4-Dichlorobenzene-d4	7.72

Hit#	of	Tentative ID	MW	MolForm	CAS#	Qual
1	5	Benzene, 1,2,4-trimethyl-	120	C9H12	000095-63-6	96
2		Benzene, 1,2,3-trimethyl-	120	C9H12	000526-73-8	95
3		Benzene, 1,2,3-trimethyl-	120	C9H12	000526-73-8	95
4		Mesitylene	120	C9H12	000108-67-8	94
5		Mesitylene	120	C9H12	000108-67-8	91



Data Path : Z:\HPCHEM1\BNA M\DATA\BM111717\  
 Data File : BM013037.D  
 Acq On : 18 Nov 2017 13:22  
 Operator : SJ/JU  
 Sample : I6405-18 5X  
 Misc :  
 ALS Vial : 47 Sample Multiplier: 1

Instrument :  
 BNA\_M  
 ClientSampleId :  
 BE2T9

Quant Method : Z:\HPCHEM1\BNA M\METHODS\SOM-EPA-BM111617.M  
 Quant Title : SVOA CALIBRATION

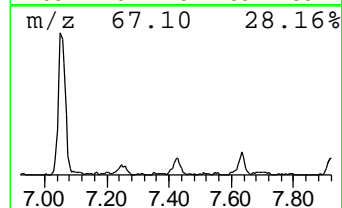
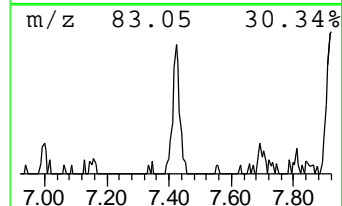
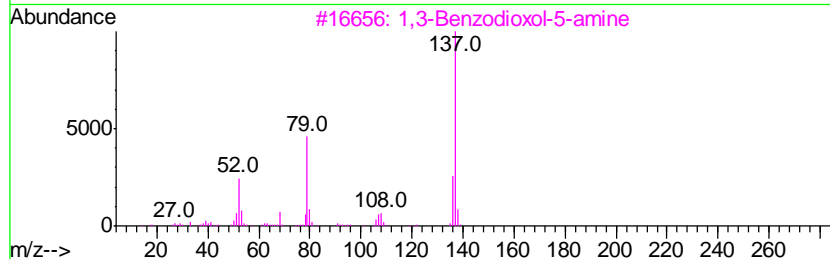
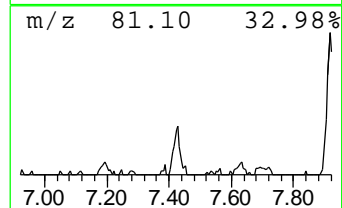
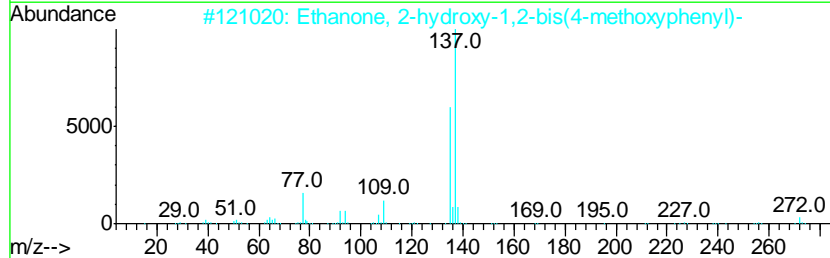
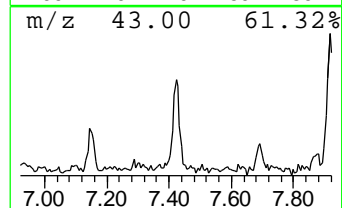
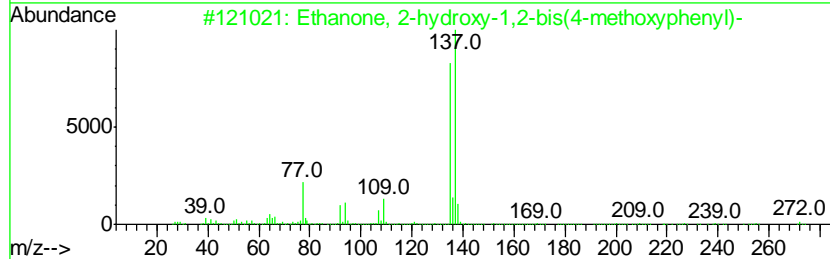
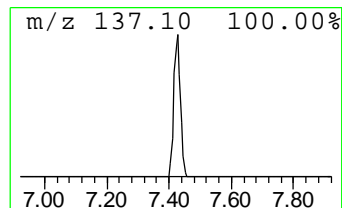
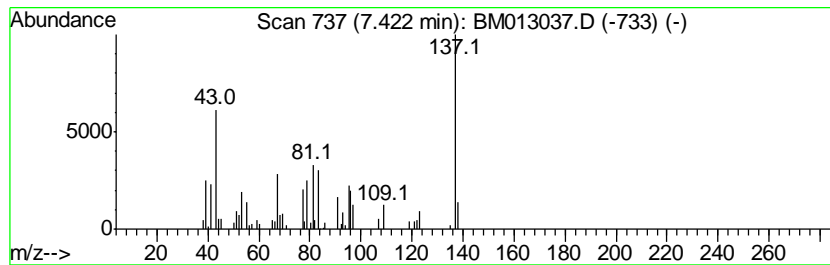
TIC Library : C:\DATABASE\NIST11.L  
 TIC Integration Parameters: LSCINT.P

\*\*\*\*\*  
 Peak Number 11 unknown-01 Concentration Rank 33

R.T.	EstConc	Area	Relative to ISTD	R.T.
7.42	2.19 ng/ul	161894	1,4-Dichlorobenzene-d4	7.72

Hit#	of	Tentative ID	MW	MolForm	CAS#	Qual
1	5	Ethanone, 2-hydroxy-1,2-bis(4-me...	272	C16H16O4	000119-52-8	37
2		Ethanone, 2-hydroxy-1,2-bis(4-me...	272	C16H16O4	000119-52-8	37
3		1,3-Benzodioxol-5-amine	137	C7H7NO2	014268-66-7	35
4		Benzenemethanol, 4-methoxy-.alph...	251	C13H17NO4	103130-05-8	32
5		Benzenamine, 5-methoxy-2-methyl-	137	C8H11NO	050868-72-9	32



Data Path : Z:\HPCHEM1\BNA M\DATA\BM111717\  
 Data File : BM013037.D  
 Acq On : 18 Nov 2017 13:22  
 Operator : SJ/JU  
 Sample : I6405-18 5X  
 Misc :  
 ALS Vial : 47 Sample Multiplier: 1

Instrument :  
 BNA\_M  
 ClientSampled :  
 BE2T9

Quant Method : Z:\HPCHEM1\BNA M\METHODS\SOM-EPA-BM111617.M  
 Quant Title : SVOA CALIBRATION

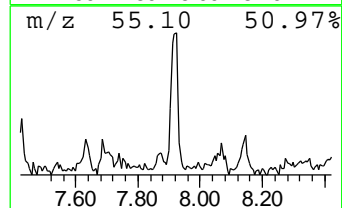
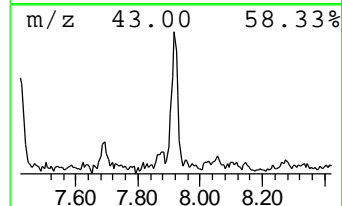
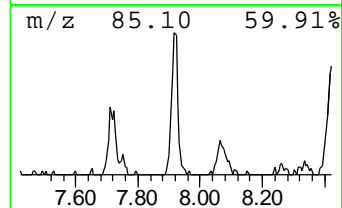
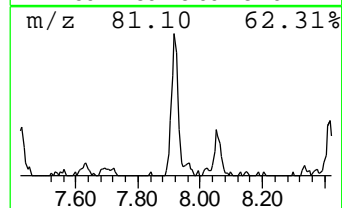
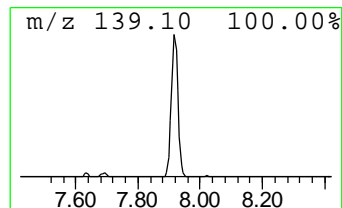
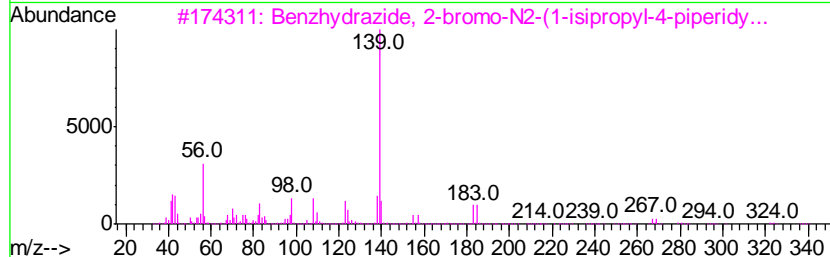
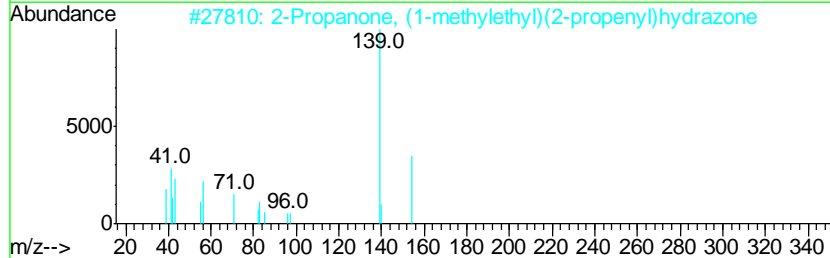
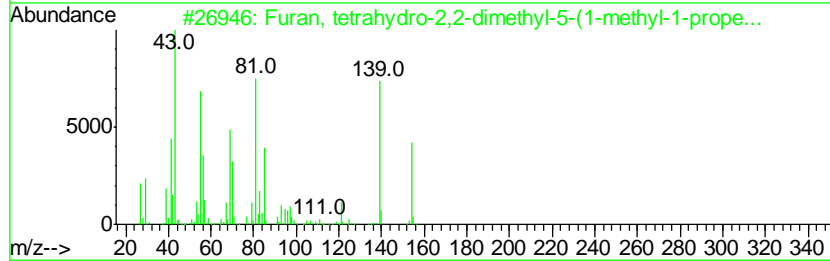
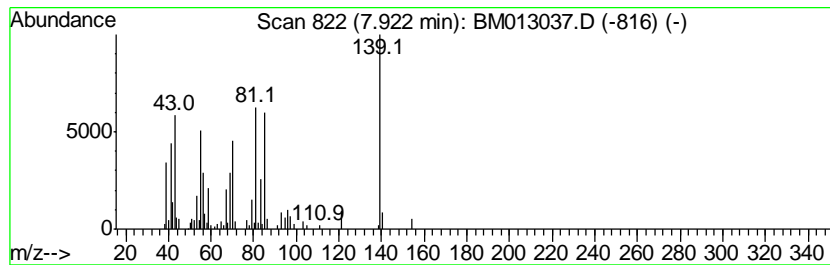
TIC Library : C:\DATABASE\NIST11.L  
 TIC Integration Parameters: LSCINT.P

\*\*\*\*\*  
 Peak Number 13 unknown-02 Concentration Rank 21

R.T.	EstConc	Area	Relative to ISTD	R.T.
7.92	3.68 ng/ul	271868	1,4-Dichlorobenzene-d4	7.72

Hit#	of	Tentative ID	MW	MolForm	CAS#	Qual
1	5	Furan, tetrahydro-2,2-dimethyl-5...	154	C10H18O	007416-35-5	45
2		2-Propanone, (1-methylethyl)(2-p...	154	C9H18N2	110213-09-7	32
3		Benzhydrazide, 2-bromo-N2-(1-isi...	337	C15H20BrN3O	1000272-99-8	32
4		Pyrrithyldione	167	C9H13NO2	000077-04-3	32
5		2-Amino-4-hydroxy-3,6-dimethylpy...	139	C6H9N3O	033796-41-7	27



Data Path : Z:\HPCHEM1\BNA M\DATA\BM111717\  
 Data File : BM013037.D  
 Acq On : 18 Nov 2017 13:22  
 Operator : SJ/JU  
 Sample : I6405-18 5X  
 Misc :  
 ALS Vial : 47 Sample Multiplier: 1

Instrument :  
 BNA\_M  
 ClientSampleID :  
 BE2T9

Quant Method : Z:\HPCHEM1\BNA M\METHODS\SOM-EPA-BM111617.M  
 Quant Title : SVOA CALIBRATION

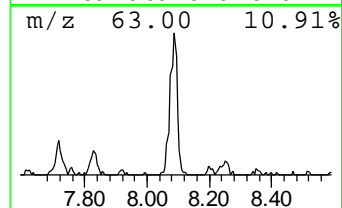
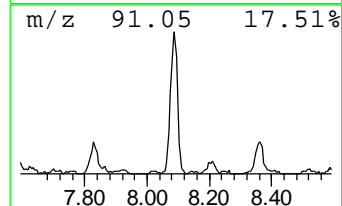
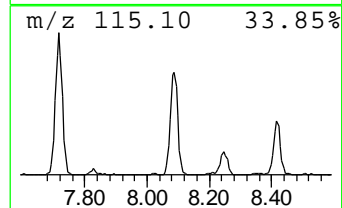
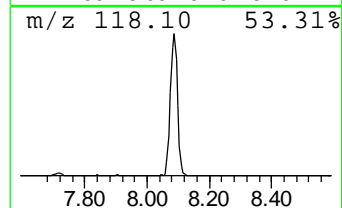
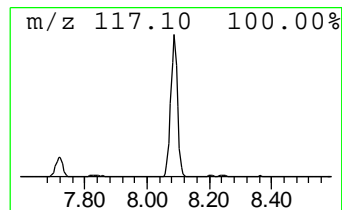
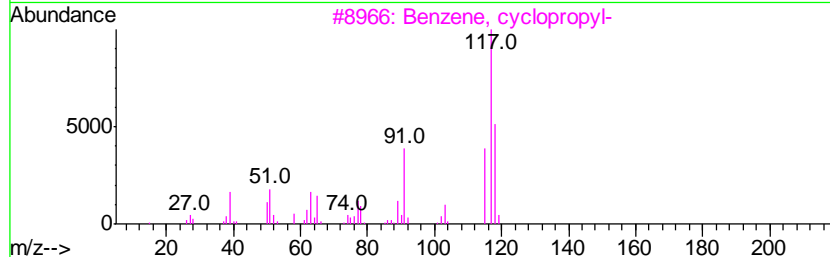
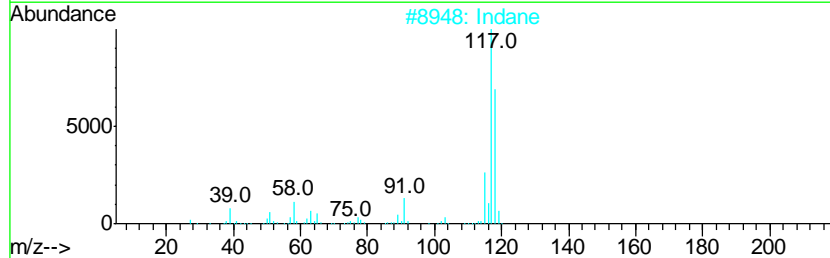
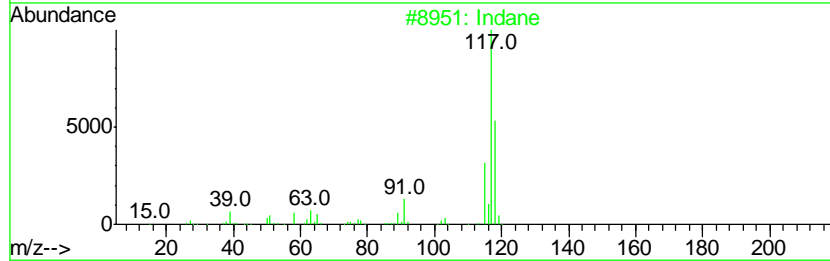
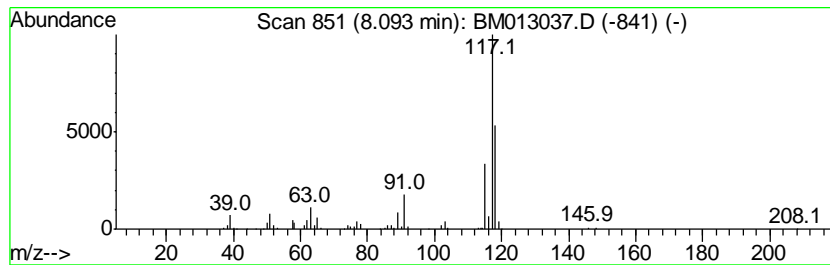
TIC Library : C:\DATABASE\NIST11.L  
 TIC Integration Parameters: LSCINT.P

\*\*\*\*\*  
 Peak Number 14 Indane Concentration Rank 3

R.T.	EstConc	Area	Relative to ISTD	R.T.
8.09	15.08 ng/ul	1115220	1,4-Dichlorobenzene-d4	7.72

Hit#	of	Tentative ID	MW	MolForm	CAS#	Qual
1	5	Indane	118	C9H10	000496-11-7	87
2		Indane	118	C9H10	000496-11-7	74
3		Benzene, cyclopropyl-	118	C9H10	000873-49-4	74
4		Benzene, cyclopropyl-	118	C9H10	000873-49-4	72
5		Deltacyclene	118	C9H10	007785-10-6	64



Data Path : Z:\HPCHEM1\BNA M\DATA\BM111717\  
 Data File : BM013037.D  
 Acq On : 18 Nov 2017 13:22  
 Operator : SJ/JU  
 Sample : I6405-18 5X  
 Misc :  
 ALS Vial : 47 Sample Multiplier: 1

Instrument :  
 BNA\_M  
 ClientSampleId :  
 BE2T9

Quant Method : Z:\HPCHEM1\BNA M\METHODS\SOM-EPA-BM111617.M  
 Quant Title : SVOA CALIBRATION

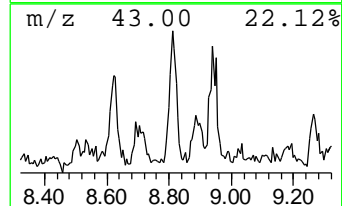
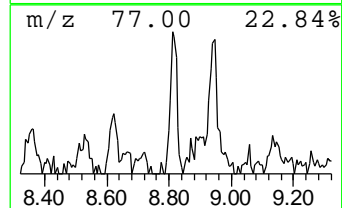
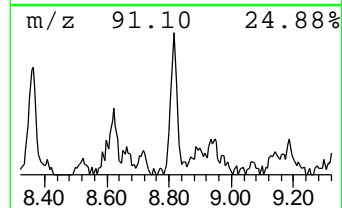
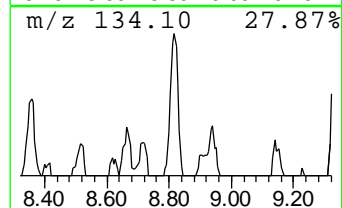
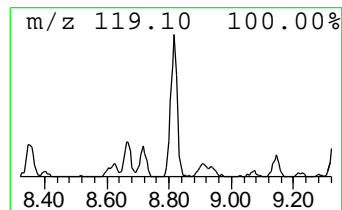
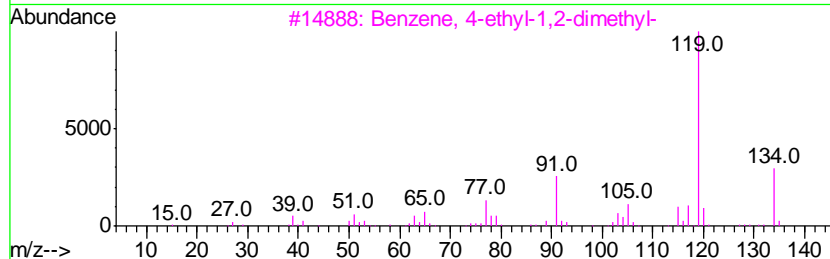
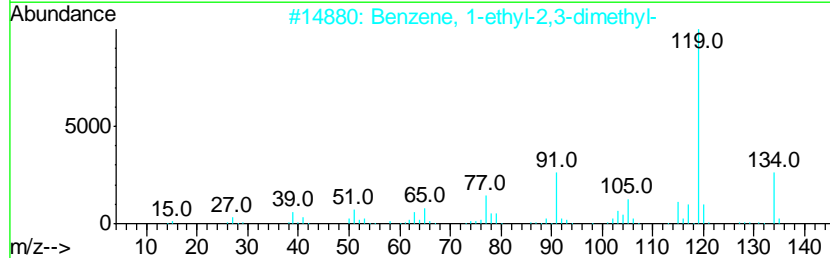
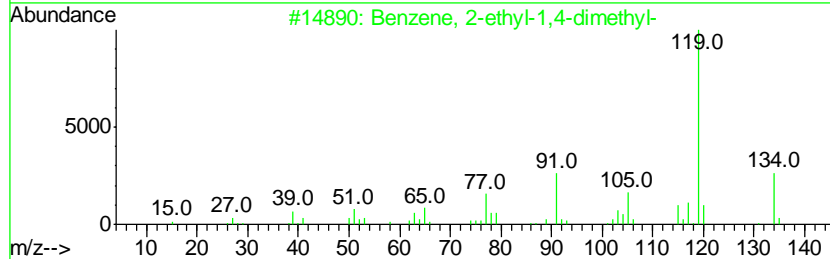
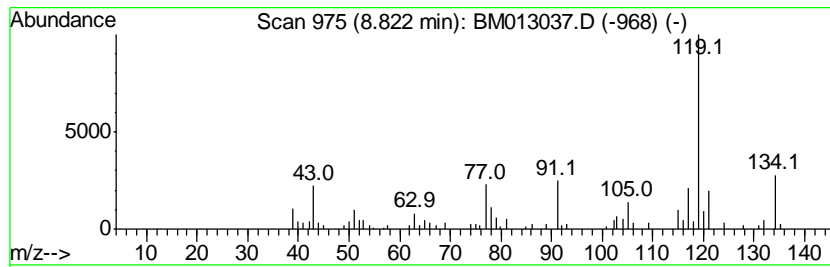
TIC Library : C:\DATABASE\NIST11.L  
 TIC Integration Parameters: LSCINT.P

\*\*\*\*\*  
 Peak Number 15 Benzene, 2-ethyl-1,4-dimethyl- Concentration Rank 29

R.T.	EstConc	Area	Relative to ISTD	R.T.
8.82	2.63 ng/ul	194075	1,4-Dichlorobenzene-d4	7.72

Hit#	of	Tentative ID	MW	MolForm	CAS#	Qual
1	5	Benzene, 2-ethyl-1,4-dimethyl-	134	C10H14	001758-88-9	95
2		Benzene, 1-ethyl-2,3-dimethyl-	134	C10H14	000933-98-2	94
3		Benzene, 4-ethyl-1,2-dimethyl-	134	C10H14	000934-80-5	93
4		Benzene, 2-ethyl-1,3-dimethyl-	134	C10H14	002870-04-4	93
5		Benzene, 1-ethyl-2,4-dimethyl-	134	C10H14	000874-41-9	90



Data Path : Z:\HPCHEM1\BNA M\DATA\BM111717\  
 Data File : BM013037.D  
 Acq On : 18 Nov 2017 13:22  
 Operator : SJ/JU  
 Sample : I6405-18 5X  
 Misc :  
 ALS Vial : 47 Sample Multiplier: 1

Instrument :  
 BNA\_M  
 ClientSampled :  
 BE2T9

Quant Method : Z:\HPCHEM1\BNA M\METHODS\SOM-EPA-BM111617.M  
 Quant Title : SVOA CALIBRATION

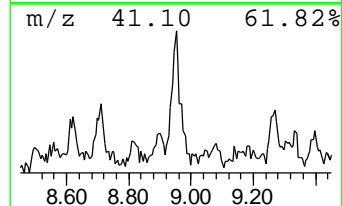
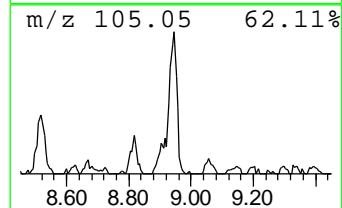
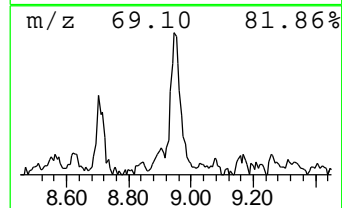
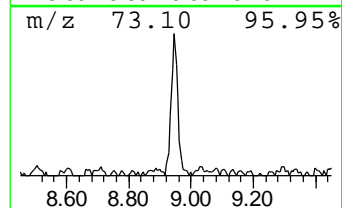
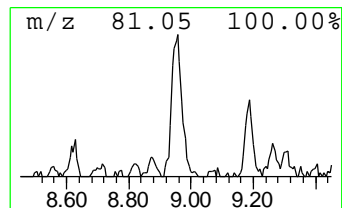
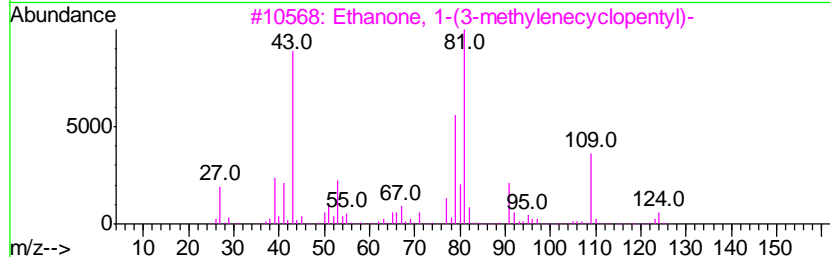
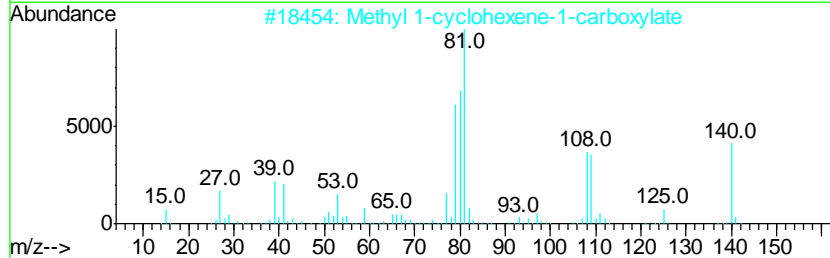
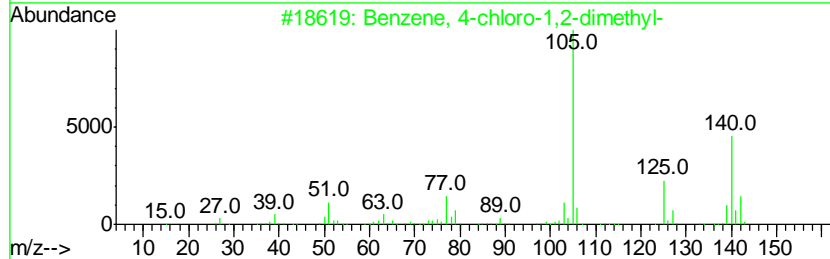
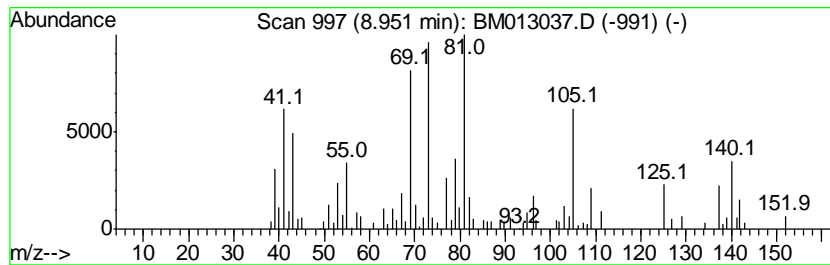
TIC Library : C:\DATABASE\NIST11.L  
 TIC Integration Parameters: LSCINT.P

\*\*\*\*\*  
 Peak Number 16 Benzene, 4-chloro-1,2-dimet... Concentration Rank 16

R.T.	EstConc	Area	Relative to ISTD	R.T.
8.95	5.02 ng/ul	371348	1,4-Dichlorobenzene-d4	7.72

Hit#	of	Tentative ID	MW	MolForm	CAS#	Qual
1	5	Benzene, 4-chloro-1,2-dimethyl-	140	C8H9Cl	000615-60-1	60
2		Methyl 1-cyclohexene-1-carboxylate	140	C8H12O2	018448-47-0	49
3		Ethanone, 1-(3-methylenecyclopentyl)-	124	C8H12O	054829-98-0	43
4		Ethanone, 1-(1-cyclohexen-1-yl)-	124	C8H12O	000932-66-1	38
5		2,4-Heptadienal, (E,E)-	110	C7H10O	004313-03-5	30



Data Path : Z:\HPCHEM1\BNA M\DATA\BM111717\  
 Data File : BM013037.D  
 Acq On : 18 Nov 2017 13:22  
 Operator : SJ/JU  
 Sample : I6405-18 5X  
 Misc :  
 ALS Vial : 47 Sample Multiplier: 1

Instrument :  
 BNA\_M  
 ClientSampleId :  
 BE2T9

Quant Method : Z:\HPCHEM1\BNA M\METHODS\SOM-EPA-BM111617.M  
 Quant Title : SVOA CALIBRATION

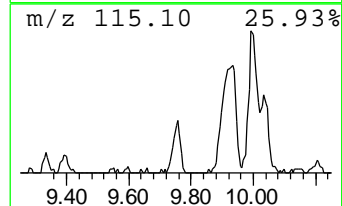
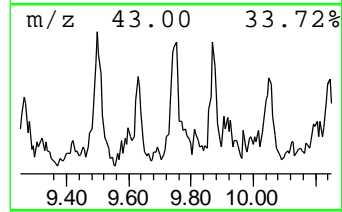
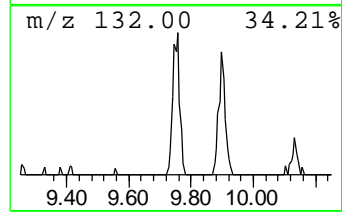
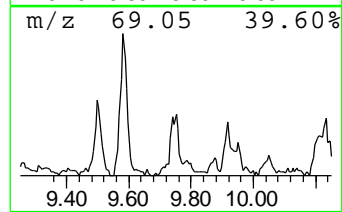
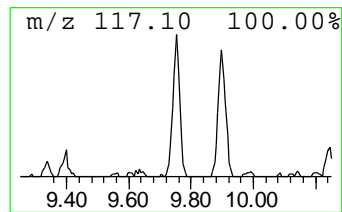
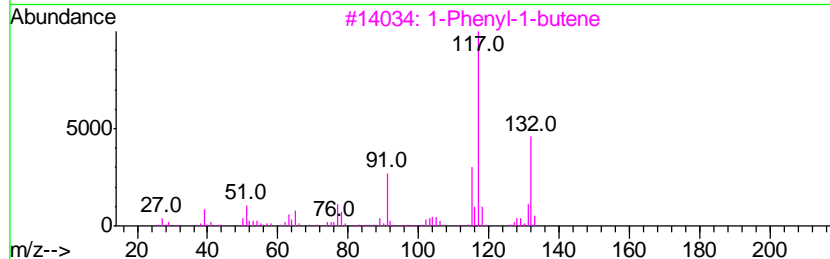
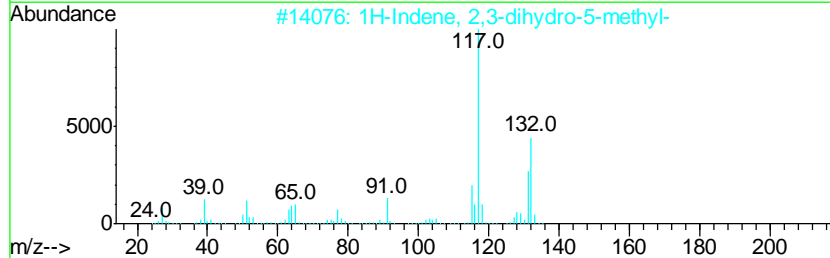
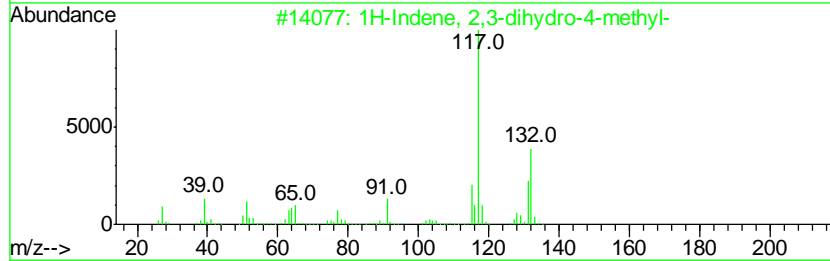
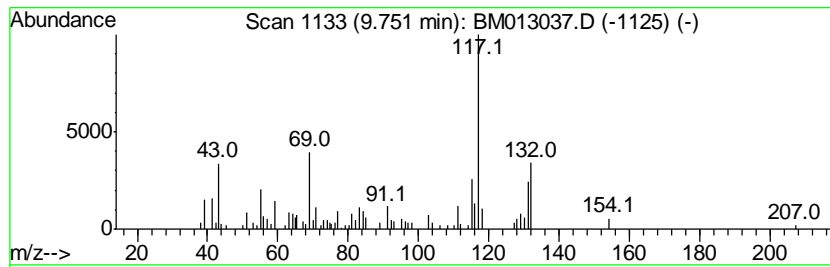
TIC Library : C:\DATABASE\NIST11.L  
 TIC Integration Parameters: LSCINT.P

\*\*\*\*\*  
 Peak Number 17 1H-Indene, 2,3-dihydro-4-me... Concentration Rank 34

R.T.	EstConc	Area	Relative to ISTD	R.T.
9.75	2.09 ng/ul	182367	Naphthalene-d8	10.50

Hit#	of	Tentative ID	MW	MolForm	CAS#	Qual
1	5	1H-Indene, 2,3-dihydro-4-methyl-	132	C10H12	000824-22-6	81
2		1H-Indene, 2,3-dihydro-5-methyl-	132	C10H12	000874-35-1	76
3		1-Phenyl-1-butene	132	C10H12	000824-90-8	76
4		Benzene, 1-ethenyl-3-ethyl-	132	C10H12	007525-62-4	68
5		Benzene, 2-butenyl-	132	C10H12	001560-06-1	68





Data Path : Z:\HPCHEM1\BNA M\DATA\BM111717\  
 Data File : BM013037.D  
 Acq On : 18 Nov 2017 13:22  
 Operator : SJ/JU  
 Sample : I6405-18 5X  
 Misc :  
 ALS Vial : 47 Sample Multiplier: 1

Instrument :  
 BNA\_M  
 ClientSampleID :  
 BE2T9

Quant Method : Z:\HPCHEM1\BNA M\METHODS\SOM-EPA-BM111617.M  
 Quant Title : SVOA CALIBRATION

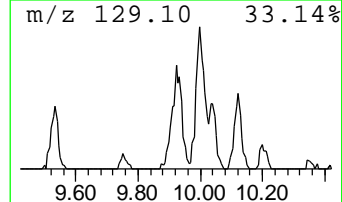
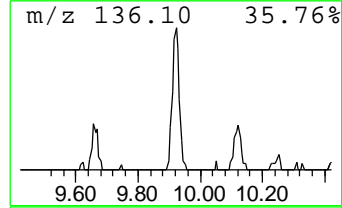
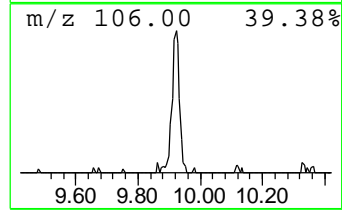
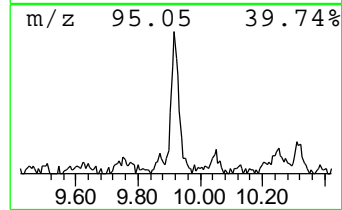
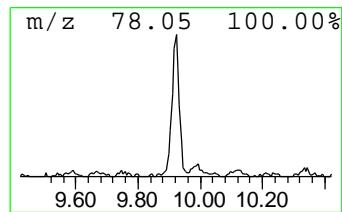
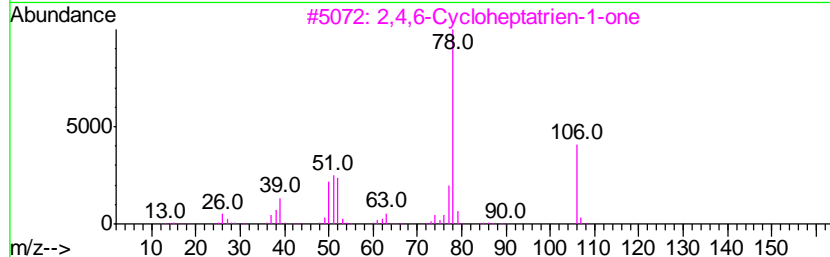
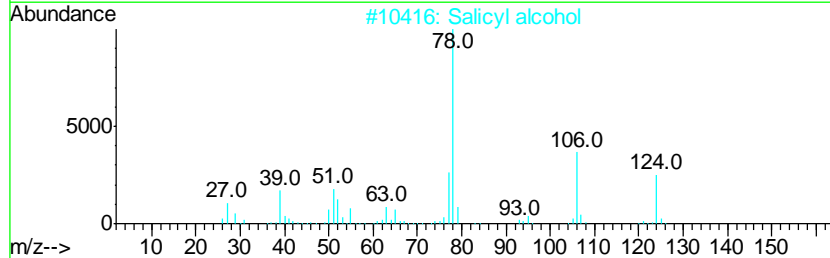
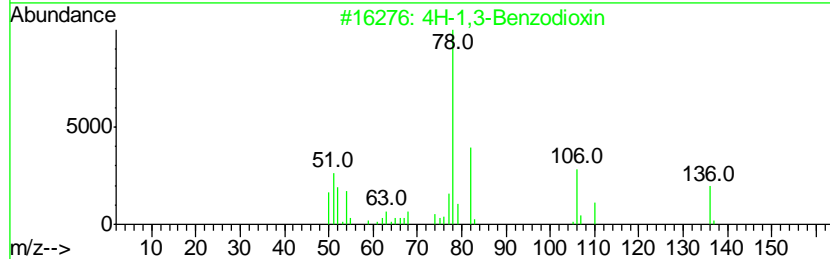
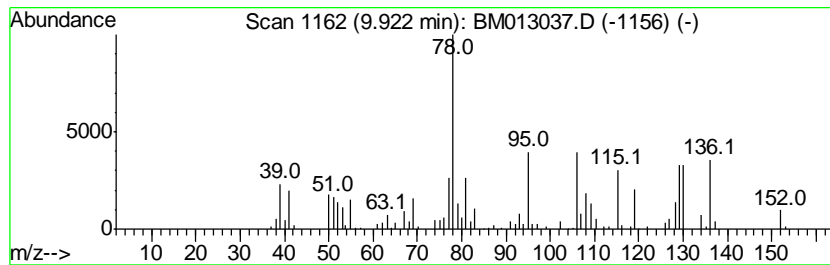
TIC Library : C:\DATABASE\NIST11.L  
 TIC Integration Parameters: LSCINT.P

\*\*\*\*\*  
 Peak Number 18 4H-1,3-Benzodioxin Concentration Rank 12

R.T.	EstConc	Area	Relative to ISTD	R.T.
9.92	6.09 ng/ul	532468	Napthalene-d8	10.50

Hit#	of	Tentative ID	MW	MolForm	CAS#	Qual
1	5	4H-1,3-Benzodioxin	136	C8H8O2	000254-27-3	62
2		Salicyl alcohol	124	C7H8O2	000090-01-7	53
3		2,4,6-Cycloheptatrien-1-one	106	C7H6O	000539-80-0	53
4		Picolinic acid N-oxide	139	C6H5NO3	000824-40-8	53
5		Benzene	78	C6H6	000071-43-2	53



Data Path : Z:\HPCHEM1\BNA M\DATA\BM111717\  
 Data File : BM013037.D  
 Acq On : 18 Nov 2017 13:22  
 Operator : SJ/JU  
 Sample : I6405-18 5X  
 Misc :  
 ALS Vial : 47 Sample Multiplier: 1

Instrument :  
 BNA\_M  
 ClientSampled :  
 BE2T9

Quant Method : Z:\HPCHEM1\BNA M\METHODS\SOM-EPA-BM111617.M  
 Quant Title : SVOA CALIBRATION

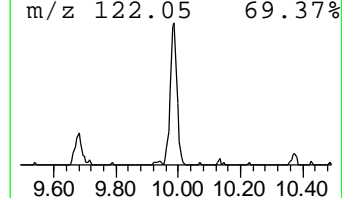
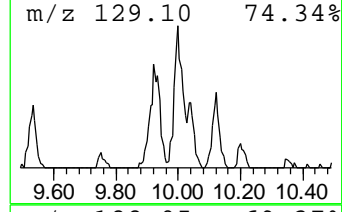
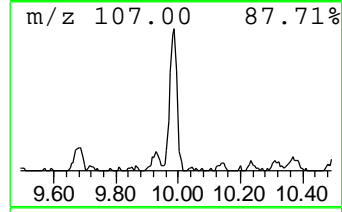
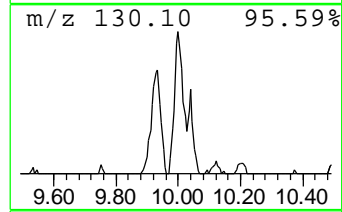
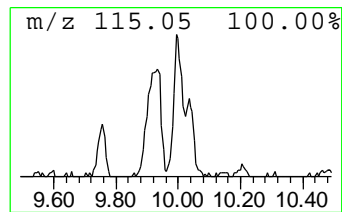
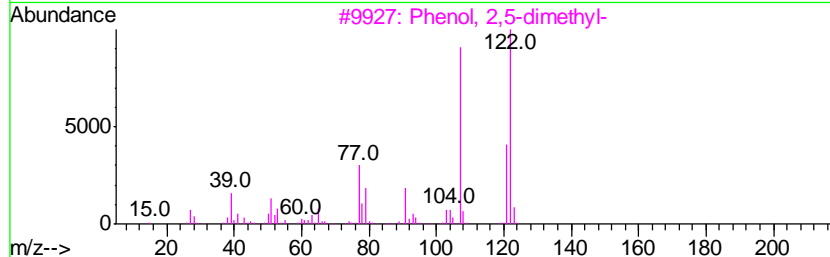
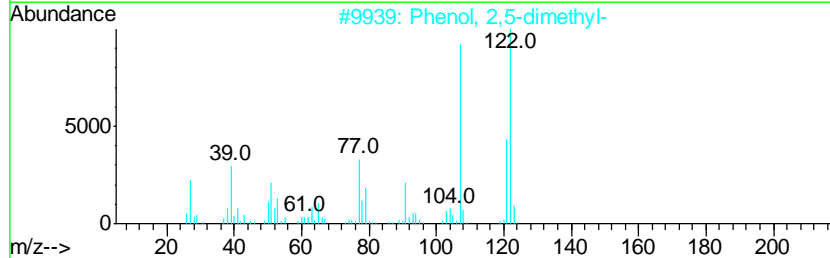
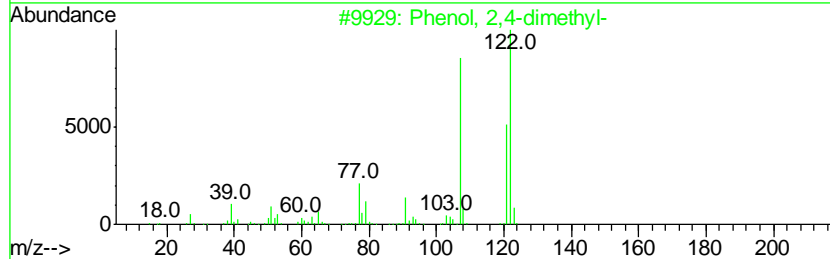
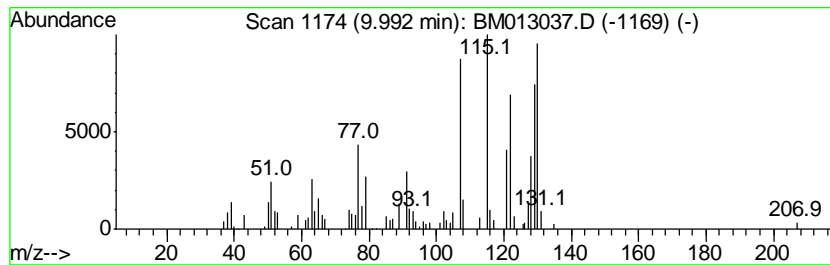
TIC Library : C:\DATABASE\NIST11.L  
 TIC Integration Parameters: LSCINT.P

\*\*\*\*\*  
 Peak Number 19 Phenol, 2,4-dimethyl- Concentration Rank 25

R.T.	EstConc	Area	Relative to ISTD	R.T.
9.99	3.34 ng/ul	291494	Naphthalene-d8	10.50

Hit#	of	Tentative ID	MW	MolForm	CAS#	Qual
1	5	Phenol, 2,4-dimethyl-	122	C8H10O	000105-67-9	93
2		Phenol, 2,5-dimethyl-	122	C8H10O	000095-87-4	86
3		Phenol, 2,5-dimethyl-	122	C8H10O	000095-87-4	86
4		Phenol, 2,4-dimethyl-	122	C8H10O	000105-67-9	86
5		Phenol, 3,5-dimethyl-	122	C8H10O	000108-68-9	70



Data Path : Z:\HPCHEM1\BNA M\DATA\BM111717\  
 Data File : BM013037.D  
 Acq On : 18 Nov 2017 13:22  
 Operator : SJ/JU  
 Sample : I6405-18 5X  
 Misc :  
 ALS Vial : 47 Sample Multiplier: 1

Instrument :  
 BNA\_M  
 ClientSampled :  
 BE2T9

Quant Method : Z:\HPCHEM1\BNA M\METHODS\SOM-EPA-BM111617.M  
 Quant Title : SVOA CALIBRATION

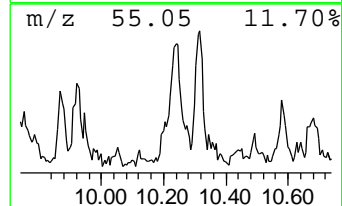
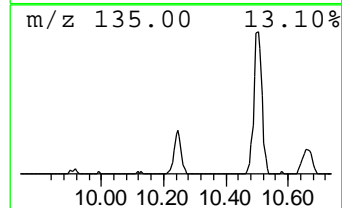
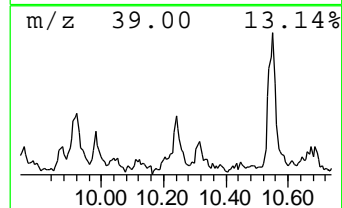
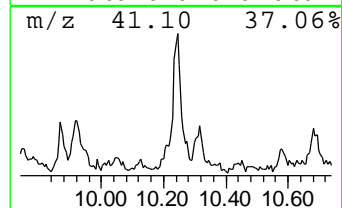
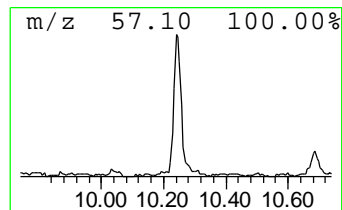
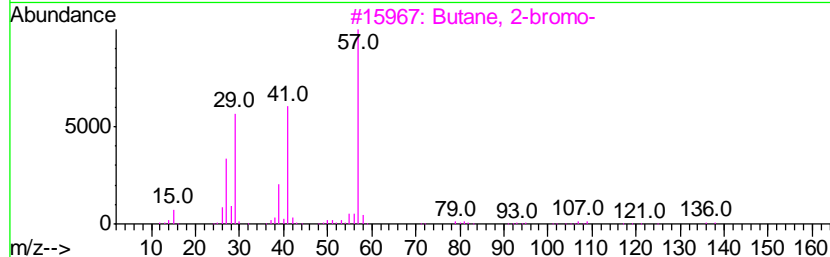
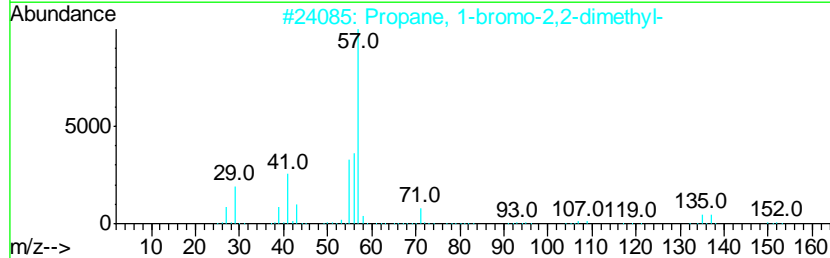
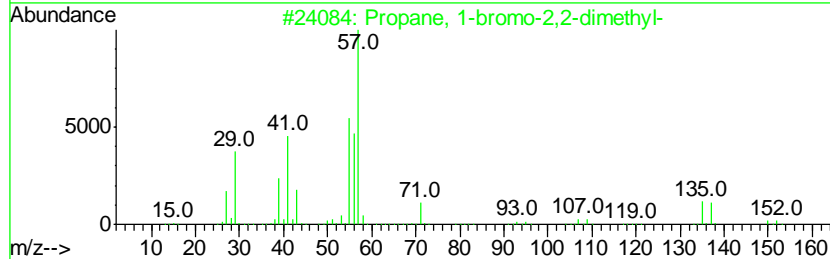
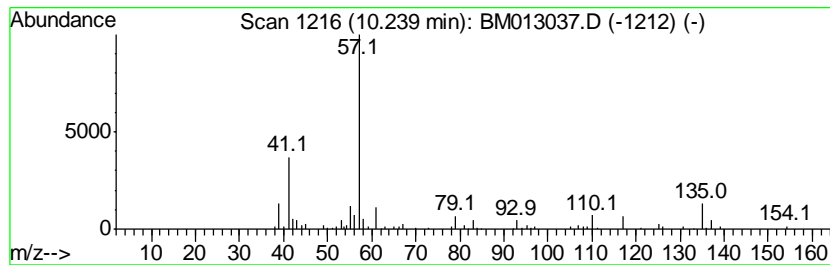
TIC Library : C:\DATABASE\NIST11.L  
 TIC Integration Parameters: LSCINT.P

\*\*\*\*\*  
 Peak Number 20 unknown-03 Concentration Rank 26

R.T.	EstConc	Area	Relative to ISTD	R.T.
10.24	3.07 ng/ul	267855	Naphthalene-d8	10.50

Hit#	of	Tentative ID	MW	MolForm	CAS#	Qual
1	5	Propane, 1-bromo-2,2-dimethyl-	150	C5H11Br	000630-17-1	17
2		Propane, 1-bromo-2,2-dimethyl-	150	C5H11Br	000630-17-1	17
3		Butane, 2-bromo-	136	C4H9Br	000078-76-2	14
4		Butane, 1-chloro-2-methyl-	106	C5H11Cl	000616-13-7	10
5		Sulfone, 2-hydroxyoctyl t-butyl	250	C12H26O3S	1000161-82-7	10



Data Path : Z:\HPCHEM1\BNA M\DATA\BM111717\  
 Data File : BM013037.D  
 Acq On : 18 Nov 2017 13:22  
 Operator : SJ/JU  
 Sample : I6405-18 5X  
 Misc :  
 ALS Vial : 47 Sample Multiplier: 1

Instrument :  
 BNA\_M  
 ClientSampled :  
 BE2T9

Quant Method : Z:\HPCHEM1\BNA M\METHODS\SOM-EPA-BM111617.M  
 Quant Title : SVOA CALIBRATION

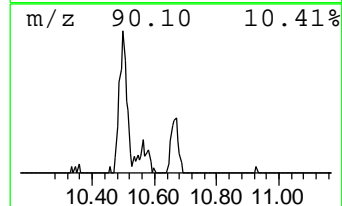
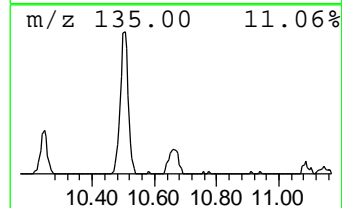
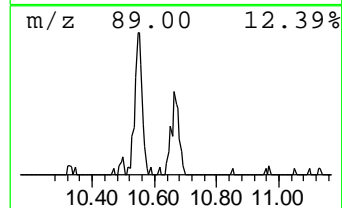
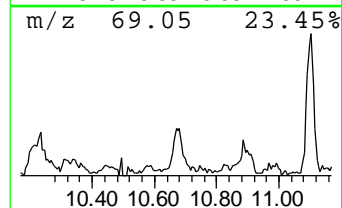
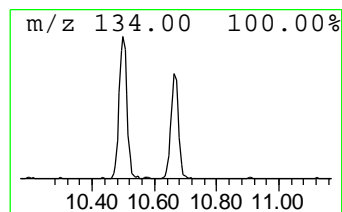
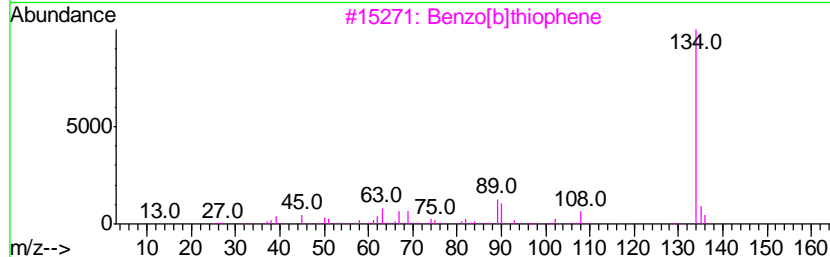
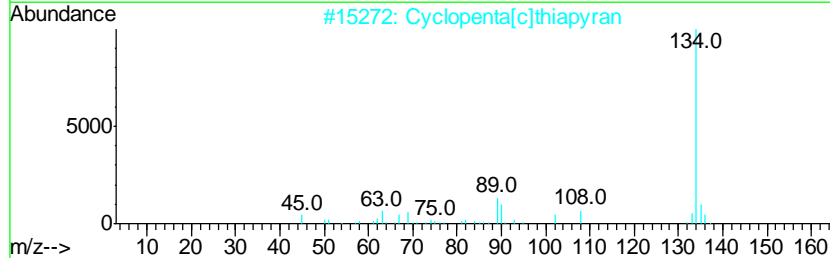
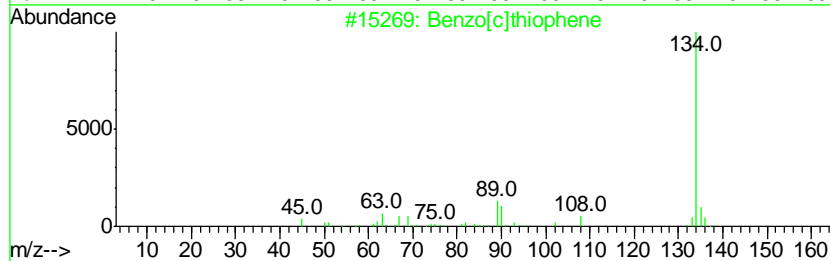
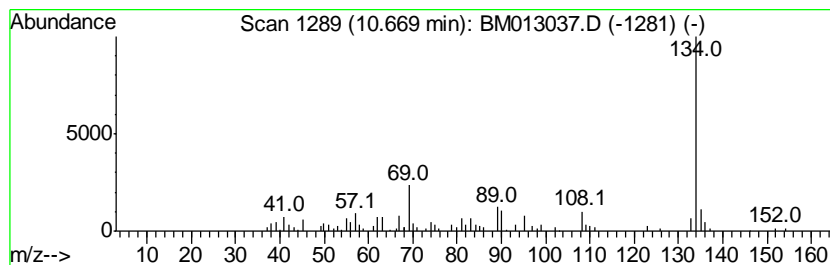
TIC Library : C:\DATABASE\NIST11.L  
 TIC Integration Parameters: LSCINT.P

\*\*\*\*\*  
 Peak Number 21 Benzo[c]thiophene Concentration Rank 23

R.T.	EstConc	Area	Relative to ISTD	R.T.
10.67	3.39 ng/ul	296332	Naphthalene-d8	10.50

Hit#	of	Tentative ID	MW	MolForm	CAS#	Qual
1	5	Benzo[c]thiophene	134	C8H6S	000270-82-6	90
2		Cyclopenta[c]thiapyran	134	C8H6S	000270-63-3	90
3		Benzo[b]thiophene	134	C8H6S	000095-15-8	90
4		Benzo[b]thiophene	134	C8H6S	000095-15-8	87
5		Benzo[b]thiophene	134	C8H6S	000095-15-8	87



Data Path : Z:\HPCHEM1\BNA M\DATA\BM111717\  
 Data File : BM013037.D  
 Acq On : 18 Nov 2017 13:22  
 Operator : SJ/JU  
 Sample : I6405-18 5X  
 Misc :  
 ALS Vial : 47 Sample Multiplier: 1

Instrument :  
 BNA\_M  
 ClientSampled :  
 BE2T9

Quant Method : Z:\HPCHEM1\BNA M\METHODS\SOM-EPA-BM111617.M  
 Quant Title : SVOA CALIBRATION

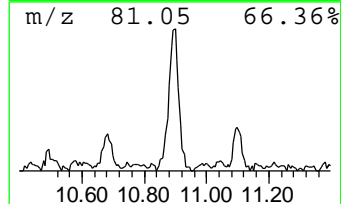
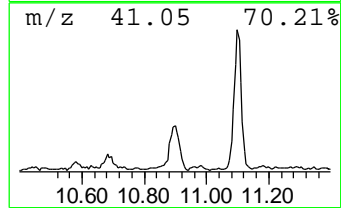
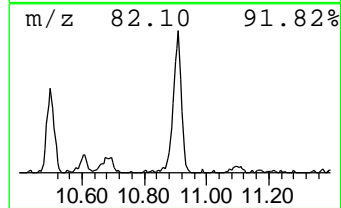
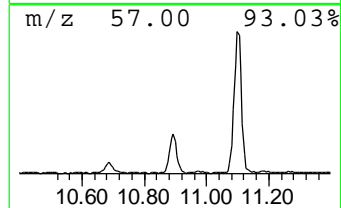
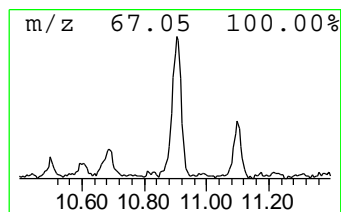
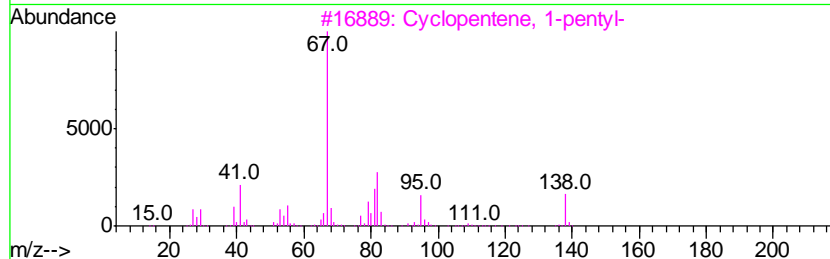
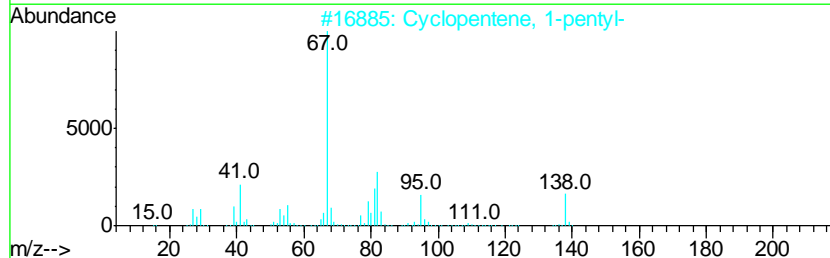
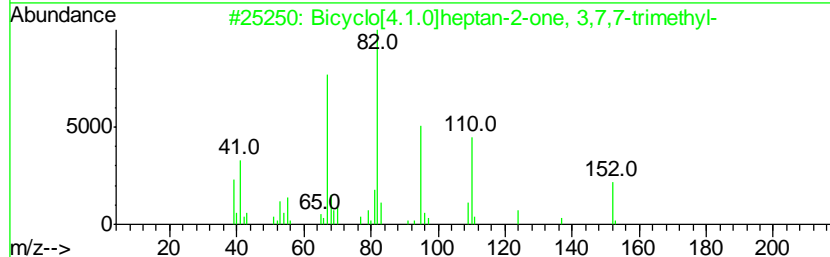
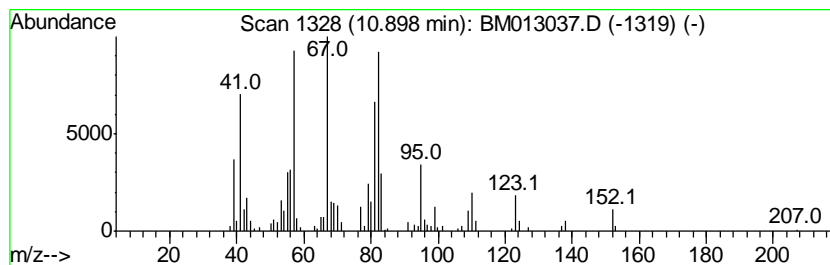
TIC Library : C:\DATABASE\NIST11.L  
 TIC Integration Parameters: LSCINT.P

\*\*\*\*\*  
 Peak Number 22 Bicyclo[4.1.0]heptan-2-one,... Concentration Rank 13

R.T.	EstConc	Area	Relative to ISTD	R.T.
10.90	5.93 ng/ul	518402	Naphthalene-d8	10.50

Hit#	of	Tentative ID	MW	MolForm	CAS#	Qual
1	5	Bicyclo[4.1.0]heptan-2-one, 3,7,...	152	C10H16O	000497-62-1	74
2		Cyclopentene, 1-pentyl-	138	C10H18	004291-98-9	62
3		Cyclopentene, 1-pentyl-	138	C10H18	004291-98-9	62
4		1,3-Pentadiene, 3-methyl-, (Z)-	82	C6H10	002787-45-3	47
5		cis-3-Hexenyl isovalerate	184	C11H20O2	035154-45-1	47



Data Path : Z:\HPCHEM1\BNA M\DATA\BM111717\  
 Data File : BM013037.D  
 Acq On : 18 Nov 2017 13:22  
 Operator : SJ/JU  
 Sample : I6405-18 5X  
 Misc :  
 ALS Vial : 47 Sample Multiplier: 1

Instrument :  
 BNA\_M  
 ClientSampled :  
 BE2T9

Quant Method : Z:\HPCHEM1\BNA M\METHODS\SOM-EPA-BM111617.M  
 Quant Title : SVOA CALIBRATION

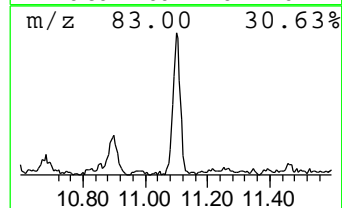
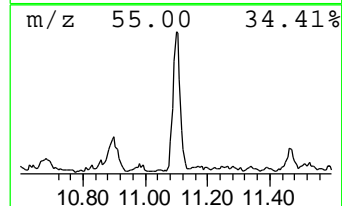
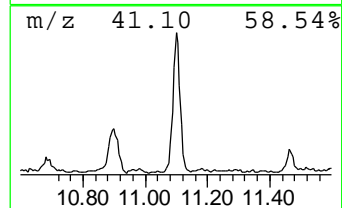
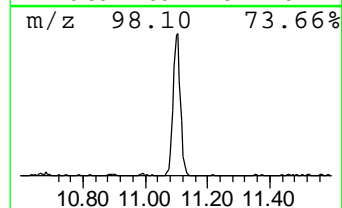
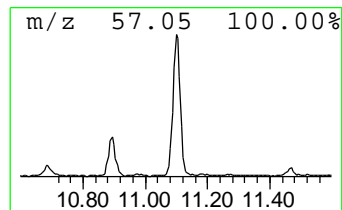
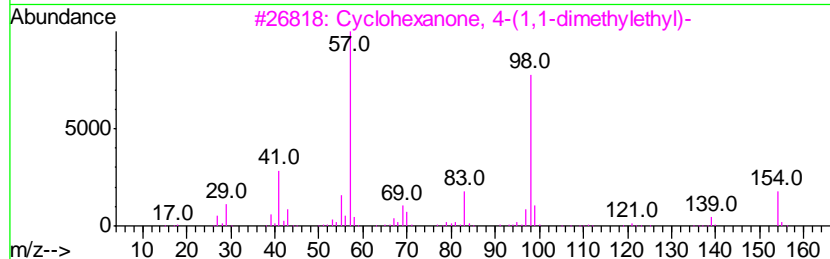
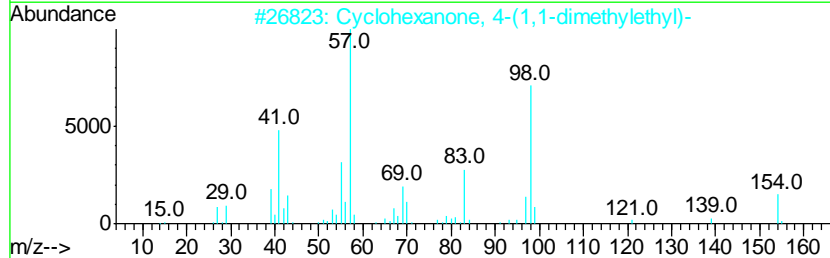
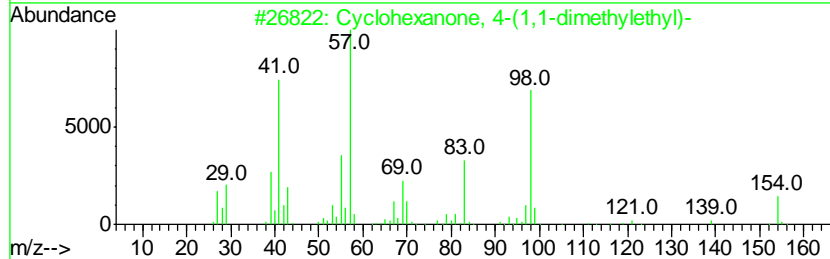
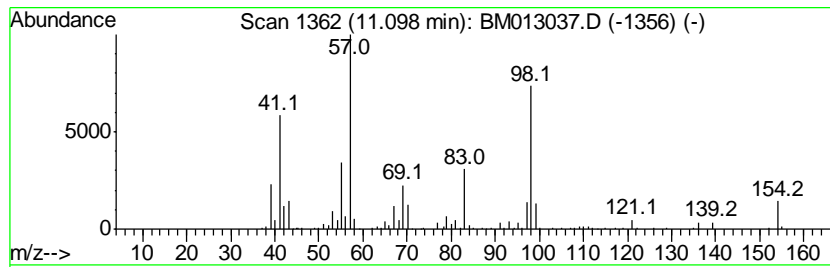
TIC Library : C:\DATABASE\NIST11.L  
 TIC Integration Parameters: LSCINT.P

\*\*\*\*\*  
 Peak Number 23 Cyclohexanone, 4-(1,1-dimet... Concentration Rank 6

R.T.	EstConc	Area	Relative to ISTD	R.T.
11.10	9.84 ng/ul	859711	Naphthalene-d8	10.50

Hit#	of	Tentative ID	MW	MolForm	CAS#	Qual
1	5	Cyclohexanone, 4-(1,1-dimethyl-ethyl)-	154	C10H18O	000098-53-3	95
2		Cyclohexanone, 4-(1,1-dimethyl-ethyl)-	154	C10H18O	000098-53-3	90
3		Cyclohexanone, 4-(1,1-dimethyl-ethyl)-	154	C10H18O	000098-53-3	80
4		Cyclohexanone, 4-(1,1-dimethyl-ethyl)-	154	C10H18O	000098-53-3	68
5		Cyclohexanone, 2-ethyl-	126	C8H14O	004423-94-3	59



Data Path : Z:\HPCHEM1\BNA M\DATA\BM111717\  
 Data File : BM013037.D  
 Acq On : 18 Nov 2017 13:22  
 Operator : SJ/JU  
 Sample : I6405-18 5X  
 Misc :  
 ALS Vial : 47 Sample Multiplier: 1

Instrument :  
 BNA\_M  
 ClientSampleID :  
 BE2T9

Quant Method : Z:\HPCHEM1\BNA M\METHODS\SOM-EPA-BM111617.M  
 Quant Title : SVOA CALIBRATION

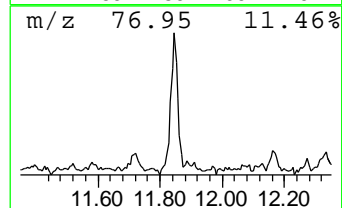
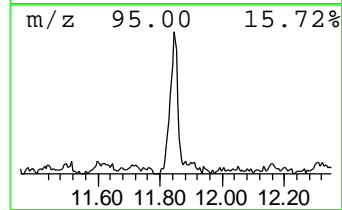
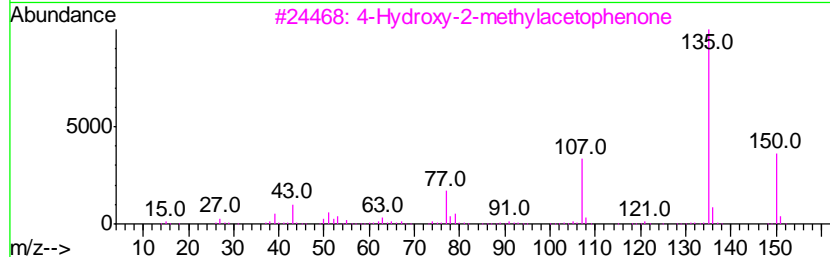
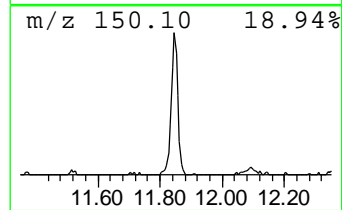
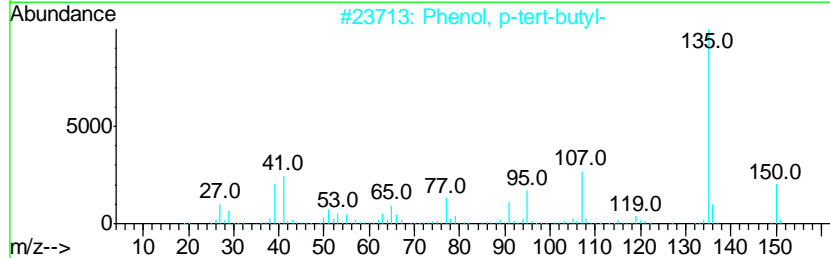
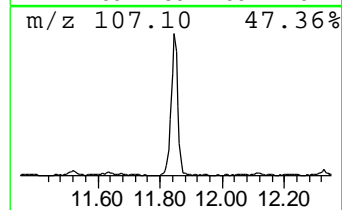
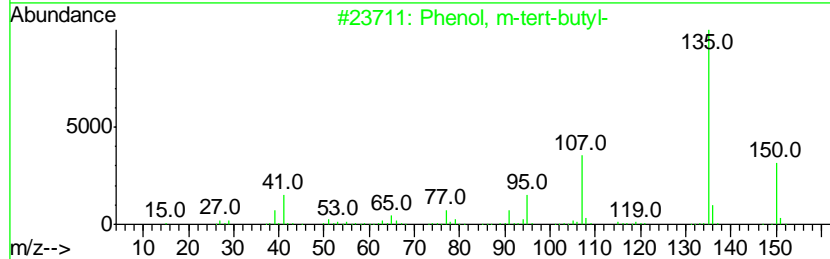
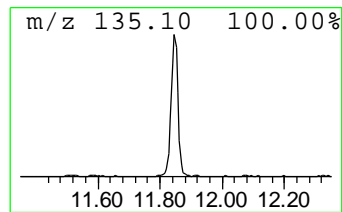
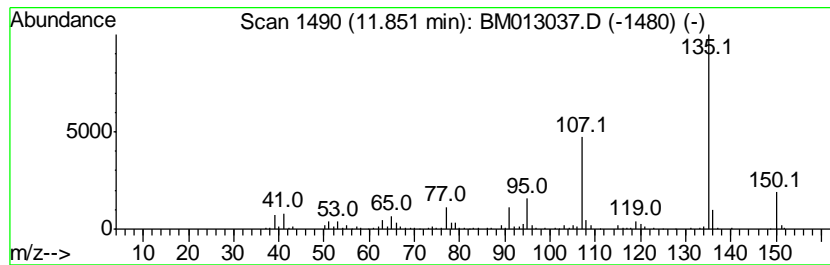
TIC Library : C:\DATABASE\NIST11.L  
 TIC Integration Parameters: LSCINT.P

\*\*\*\*\*  
 Peak Number 24 Phenol, m-tert-butyl- Concentration Rank 7

R.T.	EstConc	Area	Relative to ISTD	R.T.
11.85	8.74 ng/ul	763861	Naphthalene-d8	10.50

Hit#	of	Tentative ID	MW	MolForm	CAS#	Qual
1	5	Phenol, m-tert-butyl-	150	C10H14O	000585-34-2	91
2		Phenol, p-tert-butyl-	150	C10H14O	000098-54-4	87
3		4-Hydroxy-2-methylacetophenone	150	C9H10O2	000875-59-2	87
4		Phenol, p-tert-butyl-	150	C10H14O	000098-54-4	87
5		Phenol, m-tert-butyl-	150	C10H14O	000585-34-2	87



Data Path : Z:\HPCHEM1\BNA M\DATA\BM111717\  
 Data File : BM013037.D  
 Acq On : 18 Nov 2017 13:22  
 Operator : SJ/JU  
 Sample : I6405-18 5X  
 Misc :  
 ALS Vial : 47 Sample Multiplier: 1

Instrument :  
 BNA\_M  
 ClientSampleID :  
 BE2T9

Quant Method : Z:\HPCHEM1\BNA M\METHODS\SOM-EPA-BM111617.M  
 Quant Title : SVOA CALIBRATION

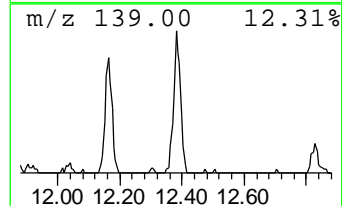
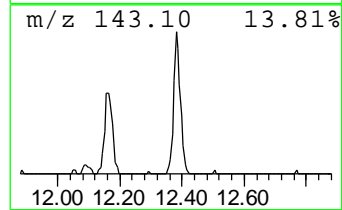
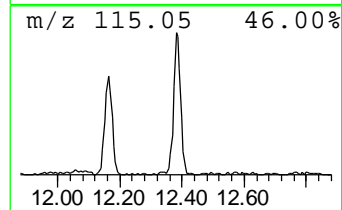
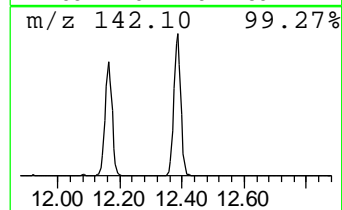
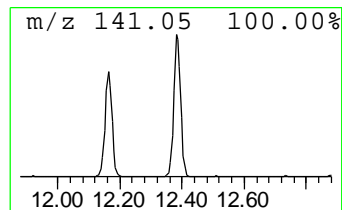
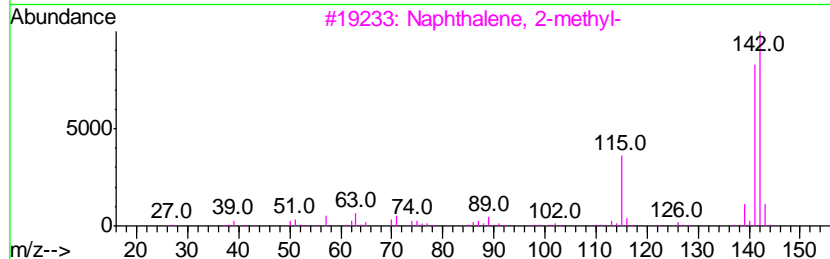
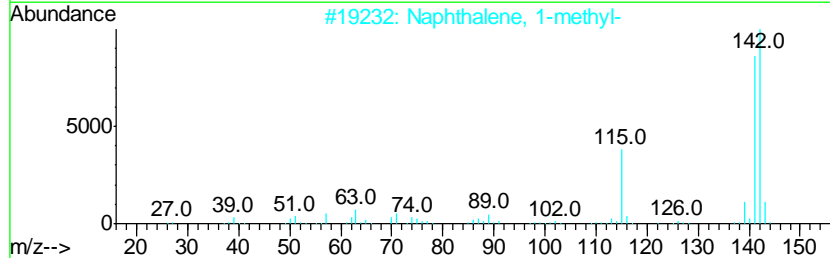
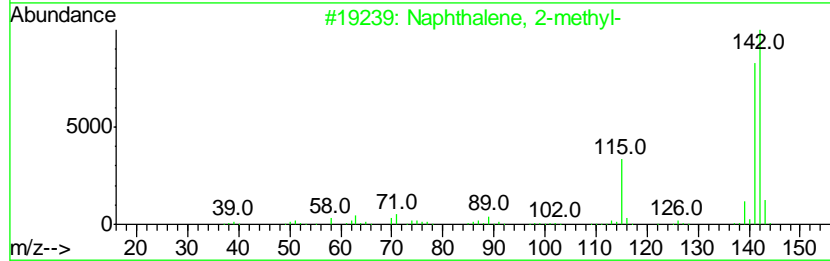
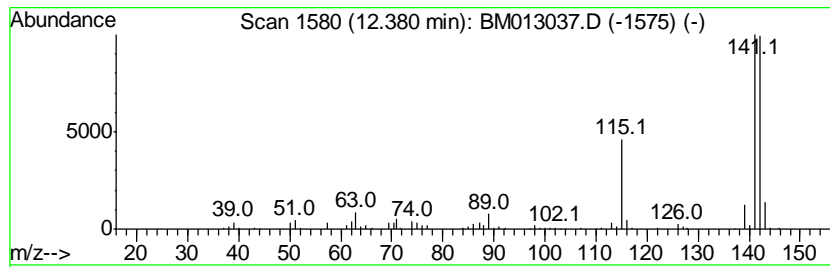
TIC Library : C:\DATABASE\NIST11.L  
 TIC Integration Parameters: LSCINT.P

\*\*\*\*\*  
 Peak Number 25 Naphthalene, 1-methyl- Concentration Rank 9

R.T.	EstConc	Area	Relative to ISTD	R.T.
12.38	8.03 ng/ul	701574	Naphthalene-d8	10.50

Hit#	of	Tentative ID	MW	MolForm	CAS#	Qual
1	5	Naphthalene, 2-methyl-	142	C11H10	000091-57-6	97
2		Naphthalene, 1-methyl-	142	C11H10	000090-12-0	94
3		Naphthalene, 2-methyl-	142	C11H10	000091-57-6	94
4		Naphthalene, 1-methyl-	142	C11H10	000090-12-0	94
5		Bicyclo[4.4.1]undeca-1,3,5,7,9-p...	142	C11H10	002443-46-1	94





Data Path : Z:\HPCHEM1\BNA M\DATA\BM111717\  
 Data File : BM013037.D  
 Acq On : 18 Nov 2017 13:22  
 Operator : SJ/JU  
 Sample : I6405-18 5X  
 Misc :  
 ALS Vial : 47 Sample Multiplier: 1

Instrument :  
 BNA\_M  
 ClientSampleID :  
 BE2T9

Quant Method : Z:\HPCHEM1\BNA M\METHODS\SOM-EPA-BM111617.M  
 Quant Title : SVOA CALIBRATION

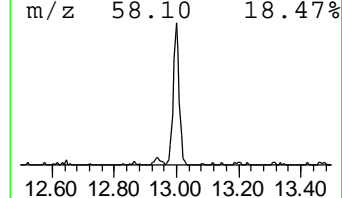
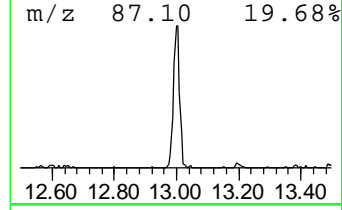
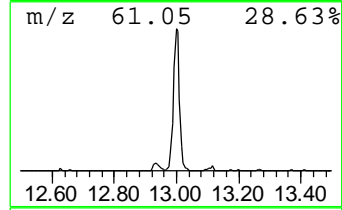
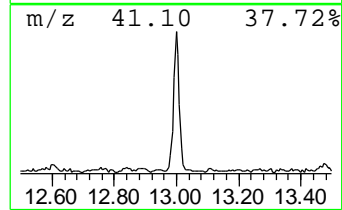
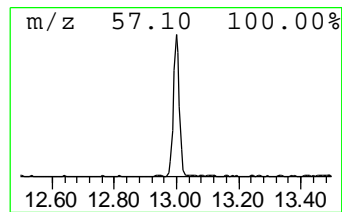
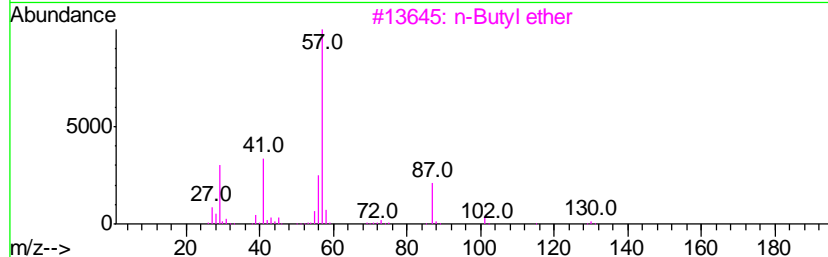
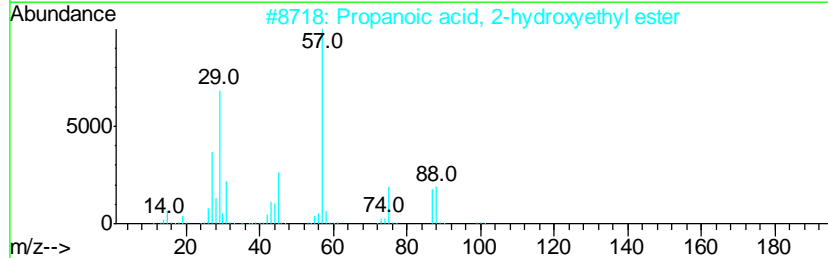
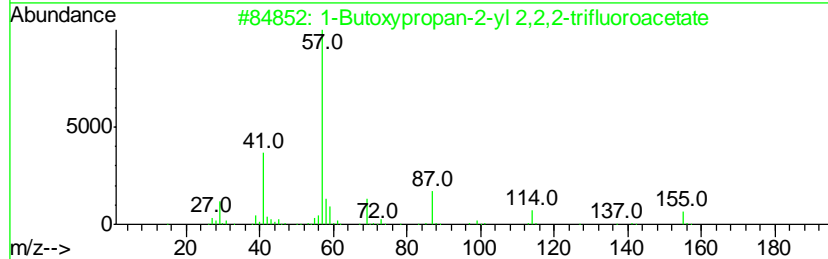
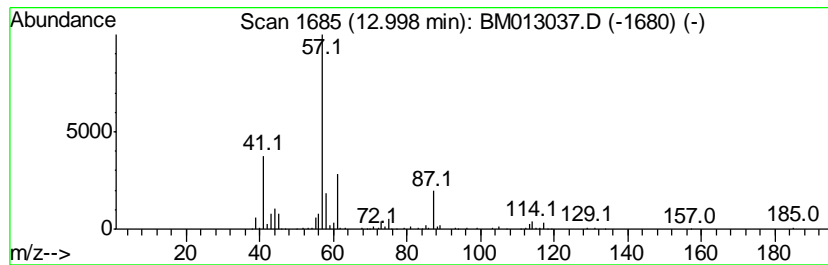
TIC Library : C:\DATABASE\NIST11.L  
 TIC Integration Parameters: LSCINT.P

\*\*\*\*\*  
 Peak Number 26 unknown-04 Concentration Rank 18

R.T.	EstConc	Area	Relative to ISTD	R.T.
13.00	4.60 ng/ul	550634	Acenaphthene-d10	14.36

Hit#	of	Tentative ID	MW	MolForm	CAS#	Qual
1	5	1-Butoxypropan-2-yl 2,2,2-triflu...	228	C9H15F3O3	1000367-08-1	47
2		Propanoic acid, 2-hydroxyethyl e...	118	C5H10O3	024567-27-9	28
3		n-Butyl ether	130	C8H18O	000142-96-1	23
4		Propanedioic acid, oxo-, bis(2-m...	230	C11H18O5	092778-43-3	22
5		3,3-Dimethylbutane-2-ol	102	C6H14O	000464-07-3	17



Data Path : Z:\HPCHEM1\BNA M\DATA\BM111717\  
 Data File : BM013037.D  
 Acq On : 18 Nov 2017 13:22  
 Operator : SJ/JU  
 Sample : I6405-18 5X  
 Misc :  
 ALS Vial : 47 Sample Multiplier: 1

Instrument :  
 BNA\_M  
 ClientSampled :  
 BE2T9

Quant Method : Z:\HPCHEM1\BNA M\METHODS\SOM-EPA-BM111617.M  
 Quant Title : SVOA CALIBRATION

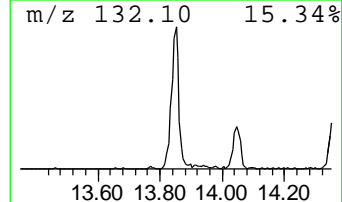
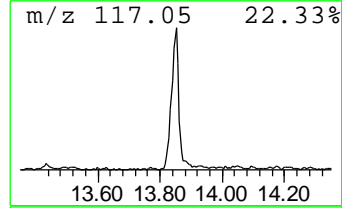
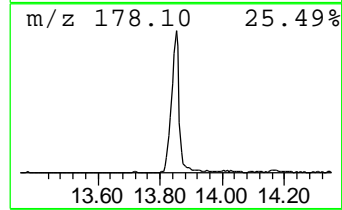
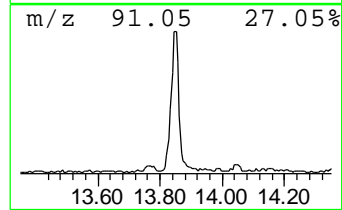
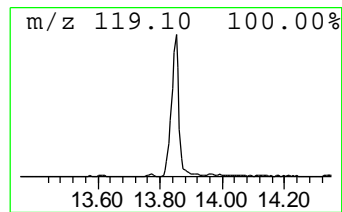
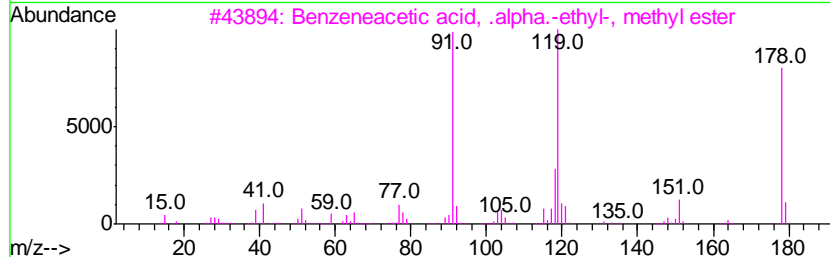
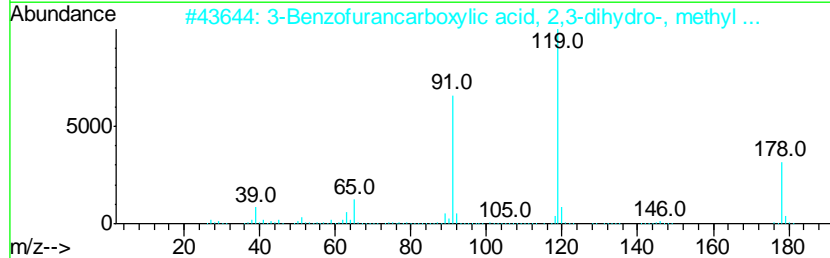
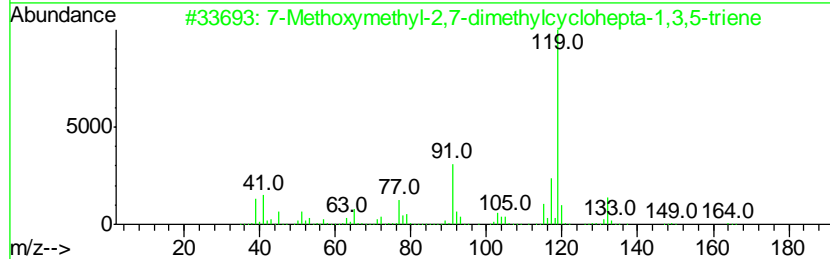
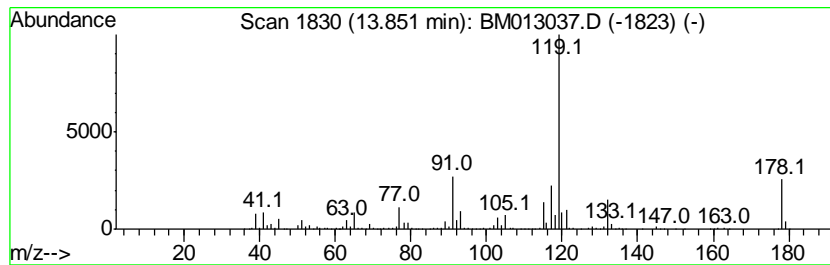
TIC Library : C:\DATABASE\NIST11.L  
 TIC Integration Parameters: LSCINT.P

\*\*\*\*\*  
 Peak Number 27 7-Methoxymethyl-2,7-dimethy... Concentration Rank 4

R.T.	EstConc	Area	Relative to ISTD	R.T.
13.85	13.85 ng/ul	1658470	Acenaphthene-d10	14.36

Hit#	of	Tentative ID	MW	MolForm	CAS#	Qual
1	5	7-Methoxymethyl-2,7-dimethylcyclo...	164	C11H16O	073992-48-0	76
2		3-Benzofurancarboxylic acid, 2,3...	178	C10H10O3	039891-56-0	64
3		Benzeneacetic acid, .alpha.-ethy...	178	C11H14O2	002294-71-5	53
4		1-Acetyl-3-phenylurea	178	C9H10N2O2	000102-03-4	52
5		Benzene, (1,1-dimethylpropyl)-	148	C11H16	002049-95-8	43



Data Path : Z:\HPCHEM1\BNA M\DATA\BM111717\  
 Data File : BM013037.D  
 Acq On : 18 Nov 2017 13:22  
 Operator : SJ/JU  
 Sample : I6405-18 5X  
 Misc :  
 ALS Vial : 47 Sample Multiplier: 1

Instrument :  
 BNA\_M  
 ClientSampled :  
 BE2T9

Quant Method : Z:\HPCHEM1\BNA M\METHODS\SOM-EPA-BM111617.M  
 Quant Title : SVOA CALIBRATION

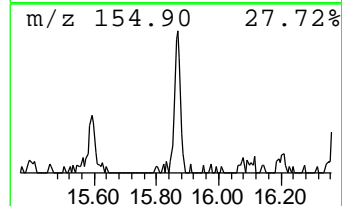
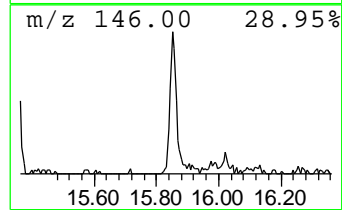
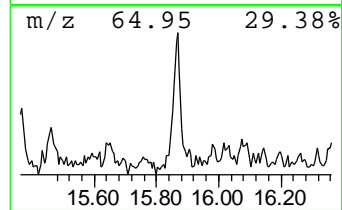
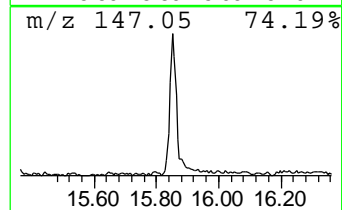
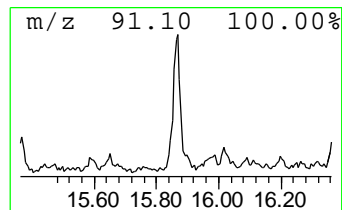
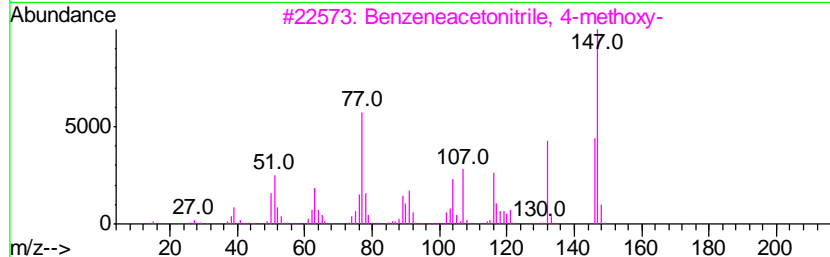
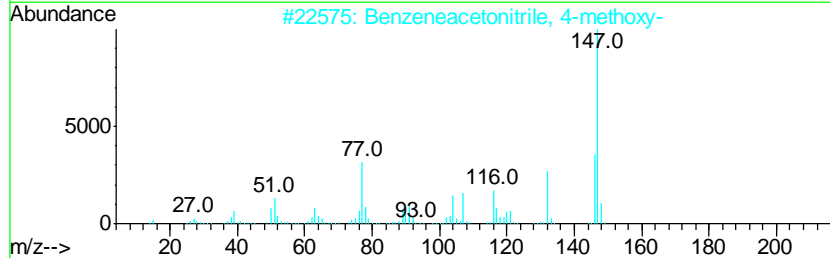
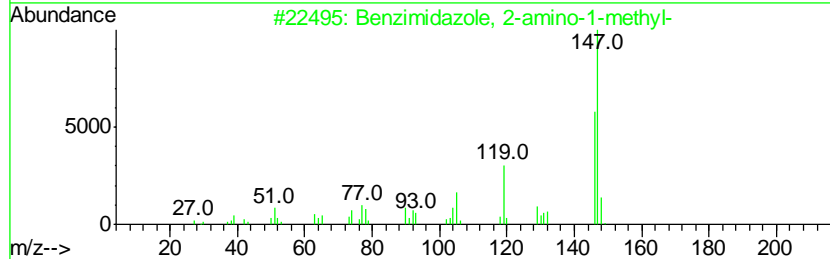
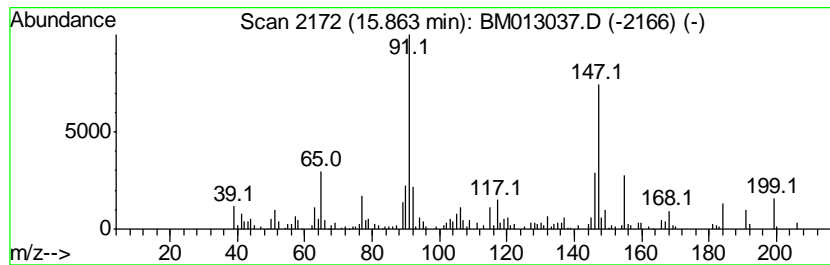
TIC Library : C:\DATABASE\NIST11.L  
 TIC Integration Parameters: LSCINT.P

\*\*\*\*\*  
 Peak Number 28 Benzimidazole, 2-amino-1-me... Concentration Rank 19

R.T.	EstConc	Area	Relative to ISTD	R.T.
15.86	4.25 ng/ul	568160	Phenanthrene-d10	17.10

Hit#	of	Tentative ID	MW	MolForm	CAS#	Qual
1	5	Benzimidazole, 2-amino-1-methyl-	147	C8H9N3	001622-57-7	64
2		Benzeneacetonitrile, 4-methoxy-	147	C9H9NO	000104-47-2	62
3		Benzeneacetonitrile, 4-methoxy-	147	C9H9NO	000104-47-2	58
4		1,3,2-Benzoxazaborole, 2-ethyl-2...	147	C8H10BNO	129363-62-8	58
5		2-Propenal, 3-phenylamino-	147	C9H9NO	025299-39-2	53



Data Path : Z:\HPCHEM1\BNA M\DATA\BM111717\  
 Data File : BM013037.D  
 Acq On : 18 Nov 2017 13:22  
 Operator : SJ/JU  
 Sample : I6405-18 5X  
 Misc :  
 ALS Vial : 47 Sample Multiplier: 1

Instrument :  
 BNA\_M  
 ClientSampled :  
 BE2T9

Quant Method : Z:\HPCHEM1\BNA M\METHODS\SOM-EPA-BM111617.M  
 Quant Title : SVOA CALIBRATION

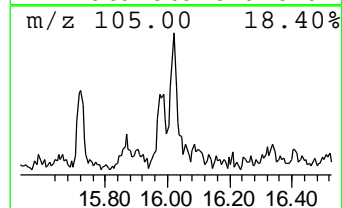
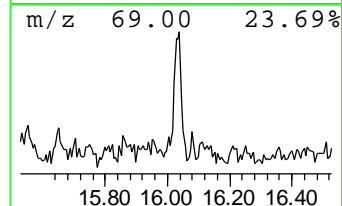
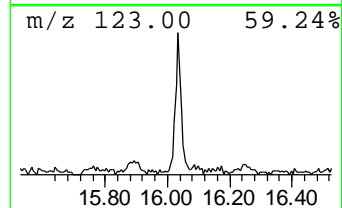
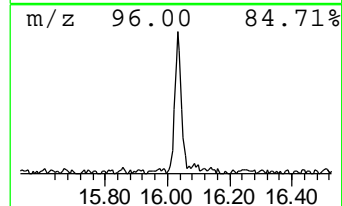
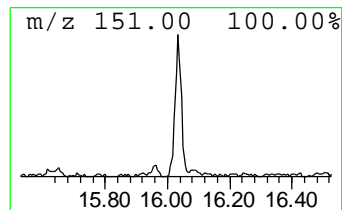
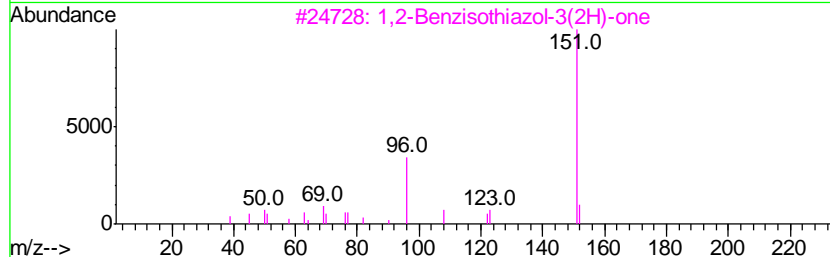
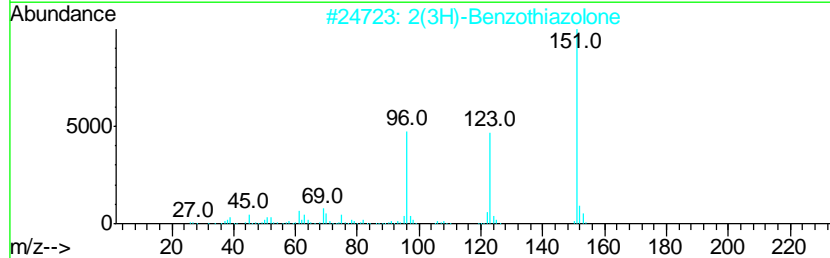
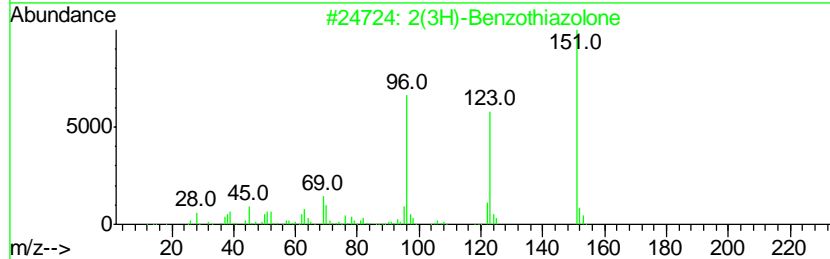
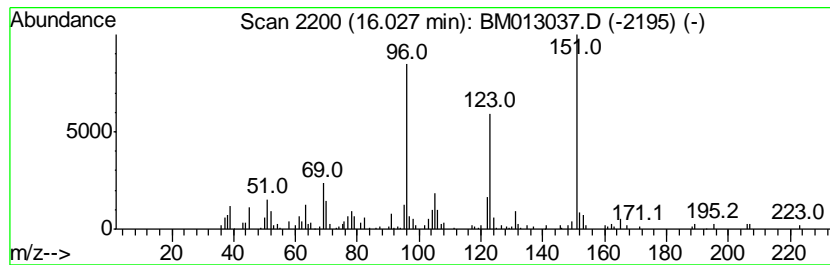
TIC Library : C:\DATABASE\NIST11.L  
 TIC Integration Parameters: LSCINT.P

\*\*\*\*\*  
 Peak Number 29 2(3H)-Benzothiazolone Concentration Rank 30

R.T.	EstConc	Area	Relative to ISTD	R.T.
16.03	2.57 ng/ul	343862	Phenanthrene-d10	17.10

Hit#	of	Tentative ID	MW	MolForm	CAS#	Qual
1	5	2(3H)-Benzothiazolone	151	C7H5NOS	000934-34-9	91
2		2(3H)-Benzothiazolone	151	C7H5NOS	000934-34-9	91
3		1,2-Benzisothiazol-3(2H)-one	151	C7H5NOS	002634-33-5	64
4		Thieno[2,3-b]pyridine-N-oxide	151	C7H5NOS	025557-50-0	55
5		6-Methyl-7-oxo-4,7-dihydro-triaz...	151	C5H5N5O	057250-39-2	38



Data Path : Z:\HPCHEM1\BNA M\DATA\BM111717\  
 Data File : BM013037.D  
 Acq On : 18 Nov 2017 13:22  
 Operator : SJ/JU  
 Sample : I6405-18 5X  
 Misc :  
 ALS Vial : 47 Sample Multiplier: 1

Instrument :  
 BNA\_M  
 ClientSampleId :  
 BE2T9

Quant Method : Z:\HPCHEM1\BNA M\METHODS\SOM-EPA-BM111617.M  
 Quant Title : SVOA CALIBRATION

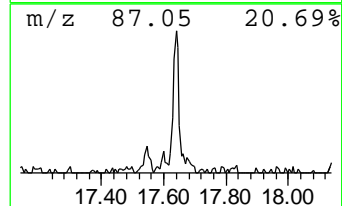
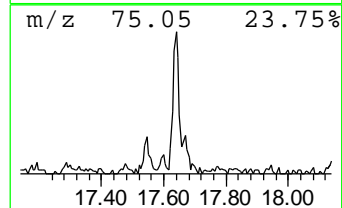
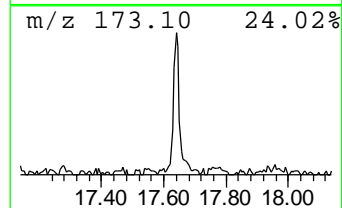
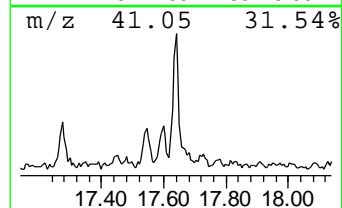
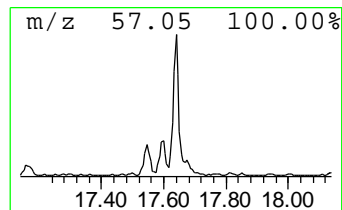
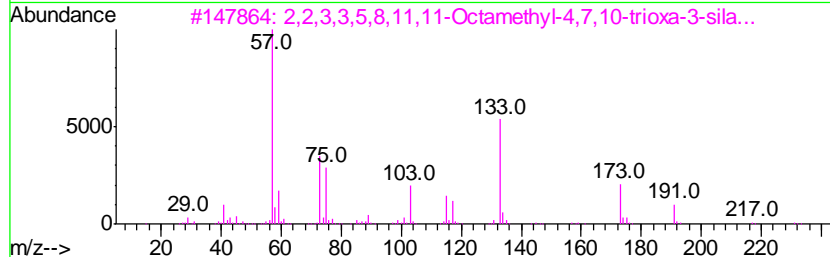
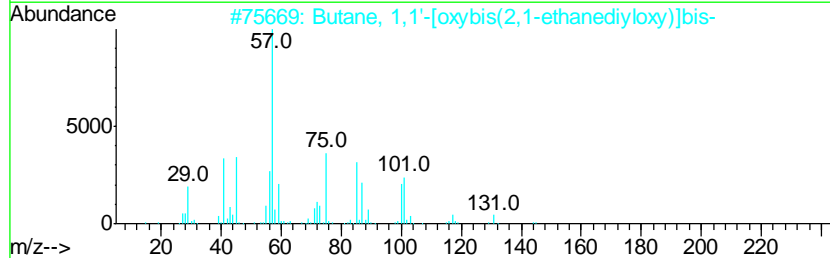
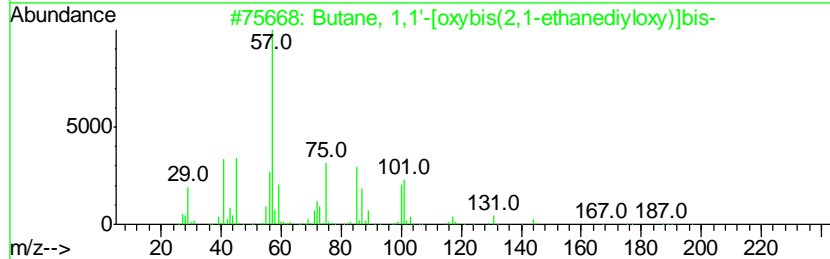
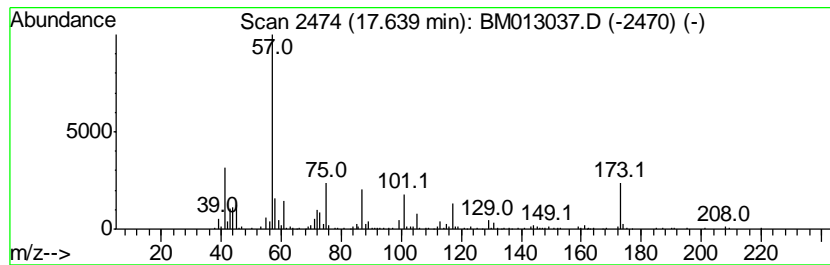
TIC Library : C:\DATABASE\NIST11.L  
 TIC Integration Parameters: LSCINT.P

\*\*\*\*\*  
 Peak Number 30 unknown-05 Concentration Rank 24

R.T.	EstConc	Area	Relative to ISTD	R.T.
17.64	3.37 ng/ul	450586	Phenanthrene-d10	17.10

Hit#	of	Tentative ID	MW	MolForm	CAS#	Qual
1	5	Butane, 1,1'-[oxybis(2,1-ethaned...	218	C12H26O3	000112-73-2	32
2		Butane, 1,1'-[oxybis(2,1-ethaned...	218	C12H26O3	000112-73-2	32
3		2,2,3,3,5,8,11,11-Octamethyl-4,7...	304	C16H36O3Si	1000367-06-6	25
4		Alpha-monopropionin	148	C6H12O4	000624-47-5	16
5		Butane, 1,1'-[oxybis(2,1-ethaned...	218	C12H26O3	000112-73-2	16



Data Path : Z:\HPCHEM1\BNA M\DATA\BM111717\  
 Data File : BM013037.D  
 Acq On : 18 Nov 2017 13:22  
 Operator : SJ/JU  
 Sample : I6405-18 5X  
 Misc :  
 ALS Vial : 47 Sample Multiplier: 1

Instrument :  
 BNA\_M  
 ClientSampleID :  
 BE2T9

Quant Method : Z:\HPCHEM1\BNA M\METHODS\SOM-EPA-BM111617.M  
 Quant Title : SVOA CALIBRATION

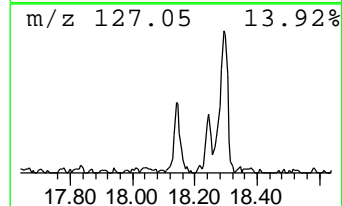
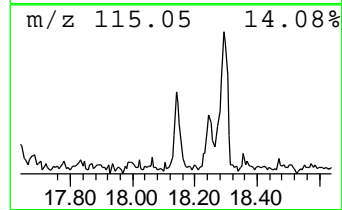
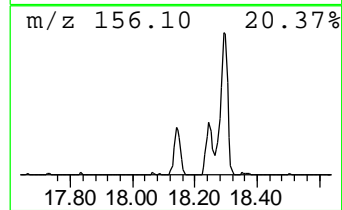
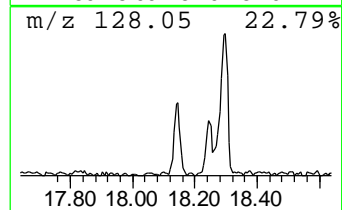
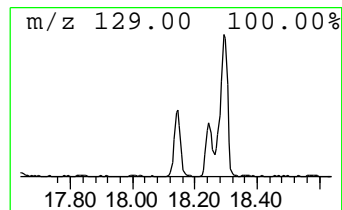
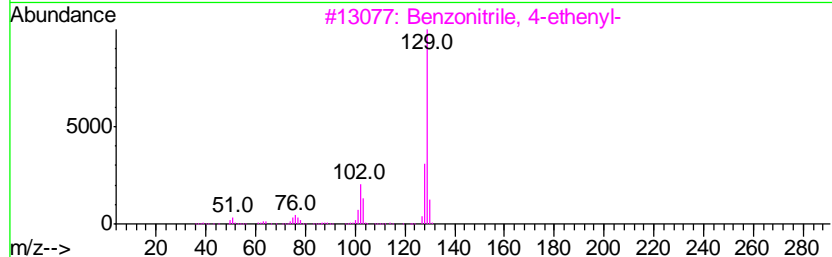
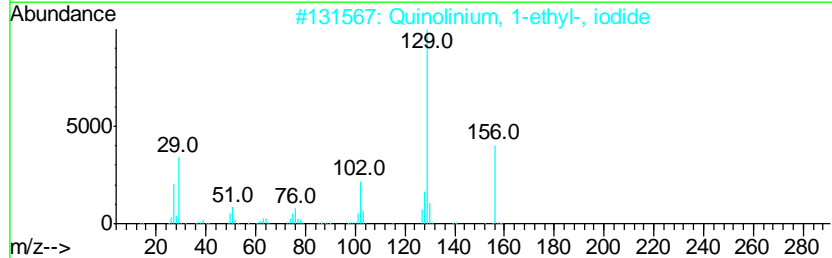
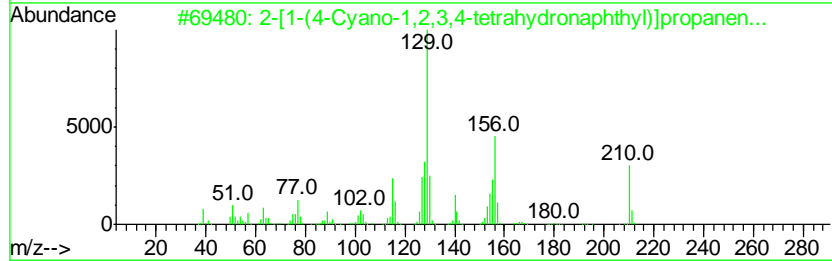
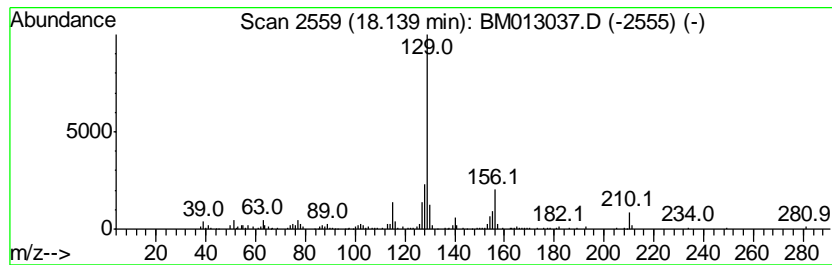
TIC Library : C:\DATABASE\NIST11.L  
 TIC Integration Parameters: LSCINT.P

\*\*\*\*\*  
 Peak Number 31 2-[1-(4-Cyano-1,2,3,4-tetra... Concentration Rank 28

R.T.	EstConc	Area	Relative to ISTD	R.T.
18.14	2.74 ng/ul	366001	Phenanthrene-d10	17.10

Hit#	of	Tentative ID	MW	MolForm	CAS#	Qual
1	5	2-[1-(4-Cyano-1,2,3,4-tetrahydro...	210	C14H14N2	057964-39-3	70
2		Quinolinium, 1-ethyl-, iodide	285	C11H12IN	000634-35-5	59
3		Benzonitrile, 4-ethenyl-	129	C9H7N	003435-51-6	58
4		2-Propenenitrile, 3-phenyl-, (E)-	129	C9H7N	001885-38-7	53
5		3-[1-(4-Cyano-1,2,3,4-tetrahydro...	210	C14H14N2	057964-40-6	53



Data Path : Z:\HPCHEM1\BNA\_M\DATA\BM111717\  
 Data File : BM013037.D  
 Acq On : 18 Nov 2017 13:22  
 Operator : SJ/JU  
 Sample : I6405-18 5X  
 Misc :  
 ALS Vial : 47 Sample Multiplier: 1

Instrument :  
 BNA\_M  
 ClientSampleId :  
 BE2T9

Quant Method : Z:\HPCHEM1\BNA\_M\METHODS\SOM-EPA-BM111617.M  
 Quant Title : SVOA CALIBRATION

TIC Library : C:\DATABASE\NIST11.L  
 TIC Integration Parameters: LSCINT.P

TIC Top Hit name	RT	EstConc	Units	Response	--Internal Standard--			
					#	RT	Resp	Conc
Benzene, 1,3-dime...	5.75	8.2	ng/ul	606778	1	7.72	1478670	20.0
Benzene, (1-methy...	6.22	5.1	ng/ul	376536	1	7.72	1478670	20.0
3-Heptanone, 5-me...	6.40	3.7	ng/ul	271898	1	7.72	1478670	20.0
Benzene, propyl-	6.71	2.5	ng/ul	184496	1	7.72	1478670	20.0
Benzene, 1,2,3-tr...	7.11	2.1	ng/ul	153695	1	7.72	1478670	20.0
Benzene, 1,2,4-tr...	7.37	5.8	ng/ul	428229	1	7.72	1478670	20.0
unknown-01	7.42	2.2	ng/ul	161894	1	7.72	1478670	20.0
unknown-02	7.92	3.7	ng/ul	271868	1	7.72	1478670	20.0
Indane	8.09	15.1	ng/ul	1115220	1	7.72	1478670	20.0
Benzene, 2-ethyl-...	8.82	2.6	ng/ul	194075	1	7.72	1478670	20.0
Benzene, 4-chloro...	8.95	5.0	ng/ul	371348	1	7.72	1478670	20.0
1H-Indene, 2,3-di...	9.75	2.1	ng/ul	182367	2	10.50	1747240	20.0
4H-1,3-Benzodioxin	9.92	6.1	ng/ul	532468	2	10.50	1747240	20.0
Phenol, 2,4-dimet...	9.99	3.3	ng/ul	291494	2	10.50	1747240	20.0
unknown-03	10.24	3.1	ng/ul	267855	2	10.50	1747240	20.0
Benzo[c]thiophene	10.67	3.4	ng/ul	296332	2	10.50	1747240	20.0
Bicyclo[4.1.0]hep...	10.90	5.9	ng/ul	518402	2	10.50	1747240	20.0
Cyclohexanone, 4-...	11.10	9.8	ng/ul	859711	2	10.50	1747240	20.0
Phenol, m-tert-bu...	11.85	8.7	ng/ul	763861	2	10.50	1747240	20.0
Naphthalene, 1-me...	12.38	8.0	ng/ul	701574	2	10.50	1747240	20.0
unknown-04	13.00	4.6	ng/ul	550634	3	14.36	2395110	20.0
7-Methoxymethyl-2...	13.85	13.9	ng/ul	1658470	3	14.36	2395110	20.0
Benzimidazole, 2-...	15.86	4.3	ng/ul	568160	4	17.10	2675720	20.0
2(3H)-Benzothiazol...	16.03	2.6	ng/ul	343862	4	17.10	2675720	20.0
unknown-05	17.64	3.4	ng/ul	450586	4	17.10	2675720	20.0
2-[1-(4-Cyano-1,2...	18.14	2.7	ng/ul	366001	4	17.10	2675720	20.0