

Data Path : Z:\svoasrv\HPCHEM1\BNA_M\Data\BM111722\
 Data File : BM037556.D
 Acq On : 18 Nov 2022 09:57
 Operator : CG/JU
 Sample : N5577-03
 Misc :
 ALS Vial : 41 Sample Multiplier: 1

Instrument :
 BNA_M
 ClientSampleId :
 C9815

Quant Time: Nov 18 23:12:28 2022
 Quant Method : Z:\SVOASRV\HPCHEM1\BNA_M\METHODS\SFAM-EPA-SIM-BM111622.M
 Quant Title : ASP BNA STANDARDS FOR 5 POINT CALIBRATION
 QLast Update : Fri Nov 18 06:51:41 2022
 Response via : Initial Calibration

Compound	R.T.	QIon	Response	Conc	Units	Dev(Min)

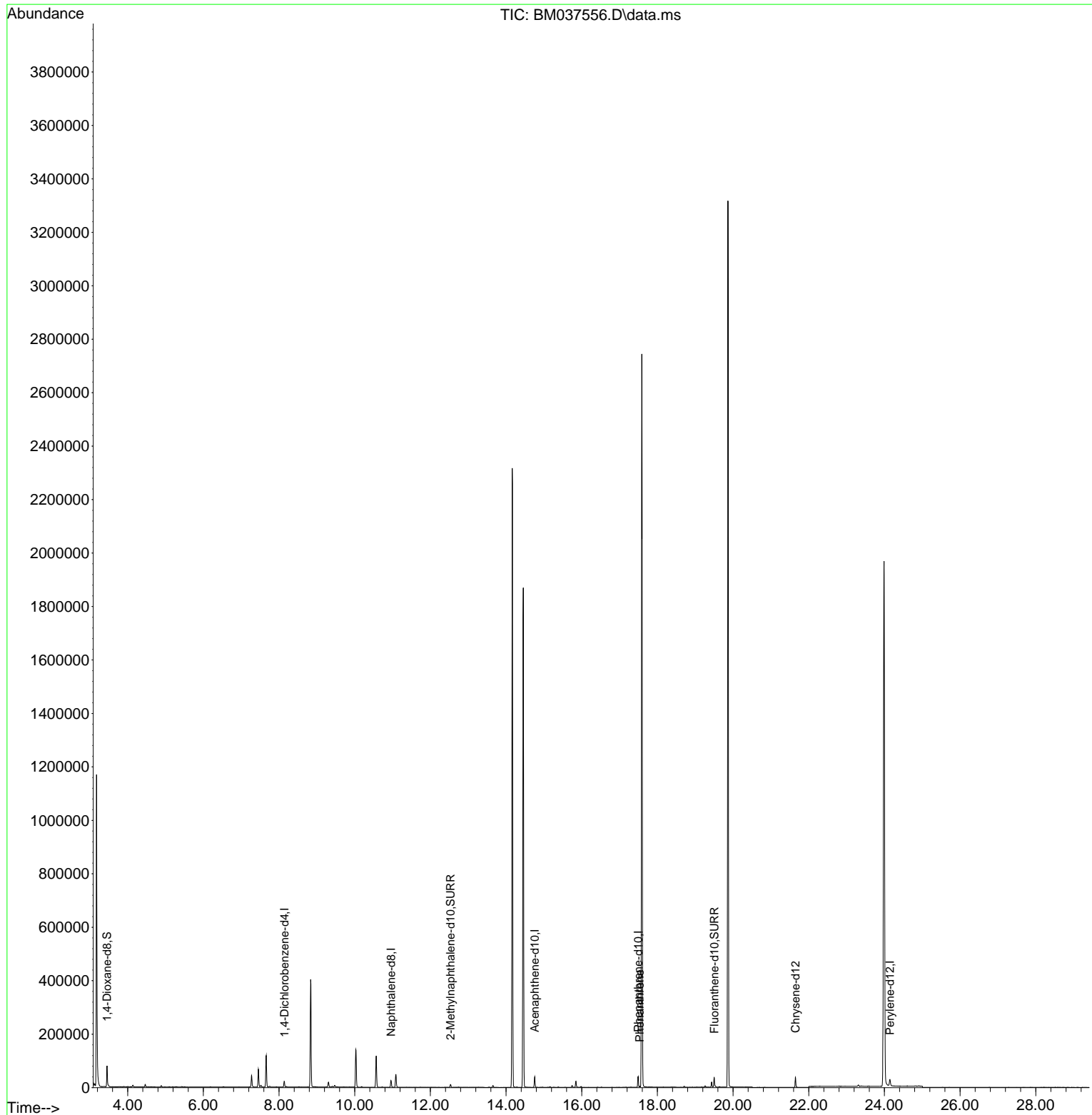
Internal Standards						
1) 1,4-Dichlorobenzene-d4	8.141	152	10839	0.400	ng/ul	0.00
4) Naphthalene-d8	10.958	136	32463	0.400	ng/ul #	0.00
9) Acenaphthene-d10	14.756	164	20409	0.400	ng/ul	0.00
13) Phenanthrene-d10	17.491	188	45223	0.400	ng/ul	0.00
17) Chrysene-d12	21.649	240	33615	0.400	ng/ul	0.00
23) Perylene-d12	24.145	264	34538	0.400	ng/ul	0.00
System Monitoring Compounds						
3) 1,4-Dioxane-d8	3.454	96	45231	3.589	ng/ul	0.00
6) 2-Methylnaphthalene-d10	12.530	152	13109	0.244	ng/ul	0.00
18) Fluoranthene-d10	19.503	212	35706	0.321	ng/ul	0.00
Target Compounds						
15) Phenanthrene	17.533	178	3603	0.023	ng/ul#	Qvalue 86

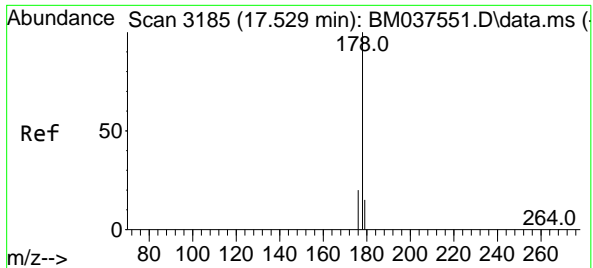
(#) = qualifier out of range (m) = manual integration (+) = signals summed

Data Path : Z:\svoasrv\HPCHEM1\BNA_M\Data\BM111722\
 Data File : BM037556.D
 Acq On : 18 Nov 2022 09:57
 Operator : CG/JU
 Sample : N5577-03
 Misc :
 ALS Vial : 41 Sample Multiplier: 1

Instrument :
 BNA_M
 ClientSampleId :
 C9815

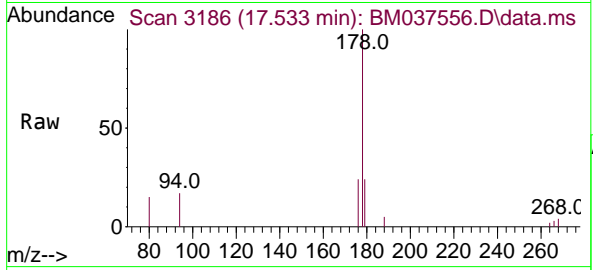
Quant Time: Nov 18 23:12:28 2022
 Quant Method : Z:\SVOASRV\HPCHEM1\BNA_M\METHODS\SFAM-EPA-SIM-BM111622.M
 Quant Title : ASP BNA STANDARDS FOR 5 POINT CALIBRATION
 QLast Update : Fri Nov 18 06:51:41 2022
 Response via : Initial Calibration





#15
 Phenanthrene
 Concen: 0.023 ng/ul
 RT: 17.533 min Scan# 31
 Delta R.T. 0.004 min
 Lab File: BM037556.D
 Acq: 18 Nov 2022 09:57

Instrument :
 BNA_M
 ClientSampleId :
 C9815



Tgt Ion:178 Resp: 3603

Ion	Ratio	Lower	Upper
178	100		
179	23.6	12.6	18.8#
176	24.4	16.0	24.0#

