

Data Path : Z:\svoasrv\HPCHEM1\BNA_M\Data\BM112421\
 Data File : BM033247.D
 Acq On : 24 Nov 2021 14:01
 Operator : CG/JU
 Sample : SSTDICC080
 Misc :
 ALS Vial : 8 Sample Multiplier: 1

Instrument :
 BNA_M
 ClientSampleId :
 SSTDICC080

Quant Time: Nov 24 14:54:42 2021
 Quant Method : Z:\svoasrv\HPCHEM1\BNA_M\Methods\8270-BM112421.M
 Quant Title : ASP BNA STANDARDS FOR 5 POINT CALIBRATION
 QLast Update : Wed Nov 24 14:37:22 2021
 Response via : Initial Calibration

Compound	R.T.	QIon	Response	Conc	Units	Dev(Min)	
Internal Standards							
1) 1,4-Dichlorobenzene-d4	7.937	152	140526	20.000	ng	0.00	
21) Naphthalene-d8	10.737	136	521181	20.000	ng	# 0.00	
39) Acenaphthene-d10	14.560	164	335397	20.000	ng	0.00	
64) Phenanthrene-d10	17.295	188	710020	20.000	ng	# 0.00	
76) Chrysene-d12	21.460	240	689559	20.000	ng	0.00	
86) Perylene-d12	23.789	264	699227	20.000	ng	0.00	
System Monitoring Compounds							
5) 2-Fluorophenol	5.508	112	1162620	144.237	ng	0.00	
7) Phenol-d6	7.102	99	1565467	130.416	ng	0.00	
23) Nitrobenzene-d5	9.107	82	1593352	167.329	ng	0.00	
42) 2,4,6-Tribromophenol	16.048	330	543923	144.806	ng	0.00	
45) 2-Fluorobiphenyl	13.189	172	3201171	148.033	ng	0.00	
79) Terphenyl-d14	19.907	244	4802566	152.057	ng	0.00	
Target Compounds							
2) 1,4-Dioxane	3.425	88	242747	70.574	ng	#	77
3) Pyridine	3.825	79	623421	66.015	ng	#	80
4) n-Nitrosodimethylamine	3.737	42	327569	81.738	ng	#	65
6) Aniline	7.272	93	885416	66.064	ng		97
8) 2-Chlorophenol	7.502	128	598920	63.770	ng		96
9) Benzaldehyde	7.084	77	391842	57.839	ng		96
10) Phenol	7.125	94	780651	67.758	ng		92
11) bis(2-Chloroethyl)ether	7.366	93	597990	65.738	ng		99
12) 1,3-Dichlorobenzene	7.825	146	687822	66.283	ng		96
13) 1,4-Dichlorobenzene	7.978	146	706662	66.473	ng		99
14) 1,2-Dichlorobenzene	8.290	146	680697	65.068	ng		98
15) Benzyl Alcohol	8.178	79	620420	72.612	ng		93
16) 2,2'-oxybis(1-Chloropr...	8.466	45	1026055	78.473	ng		94
17) 2-Methylphenol	8.372	107	519853	64.233	ng		95
18) Hexachloroethane	9.019	117	269765	71.764	ng		92
19) n-Nitroso-di-n-propyla...	8.749	70	520959	70.884	ng		95
20) 3+4-Methylphenols	8.707	107	707681	63.887	ng		97
22) Acetophenone	8.766	105	935626	73.492	ng	#	95
24) Nitrobenzene	9.143	77	764795	83.825	ng		98
25) Isophorone	9.672	82	1280301	76.089	ng		100
26) 2-Nitrophenol	9.854	139	316904	74.403	ng	#	83
27) 2,4-Dimethylphenol	9.901	122	488212	69.662	ng		100
28) bis(2-Chloroethoxy)met...	10.149	93	812313	72.254	ng		100
29) 2,4-Dichlorophenol	10.378	162	575594	71.615	ng		98
30) 1,2,4-Trichlorobenzene	10.596	180	644219	72.119	ng		97
31) Naphthalene	10.790	128	1900781	70.262	ng		100
32) Benzoic acid	10.060	122	374418	66.064	ng		93
33) 4-Chloroaniline	10.896	127	766110	67.819	ng		99
34) Hexachlorobutadiene	11.066	225	399094	73.495	ng		97
35) Caprolactam	11.695	113	85422	31.695	ng		94
36) 4-Chloro-3-methylphenol	12.007	107	650436	70.743	ng		98
37) 2-Methylnaphthalene	12.390	142	1313147	69.065	ng		96
38) 1-Methylnaphthalene	12.607	142	1281237	68.133	ng		98
40) 1,2,4,5-Tetrachloroben...	12.754	216	685599	73.941	ng	#	96
41) Hexachlorocyclopentadiene	12.731	237	396619	81.451	ng		97
43) 2,4,6-Trichlorophenol	12.995	196	477846	73.644	ng		95

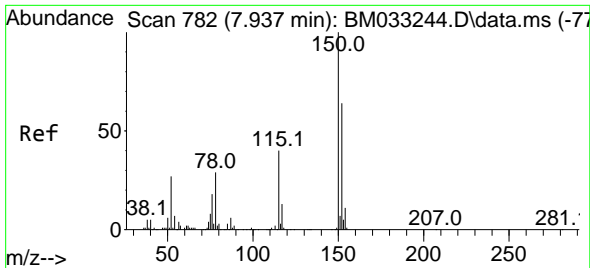
Data Path : Z:\svoasrv\HPCHEM1\BNA_M\Data\BM112421\
 Data File : BM033247.D
 Acq On : 24 Nov 2021 14:01
 Operator : CG/JU
 Sample : SSTDICC080
 Misc :
 ALS Vial : 8 Sample Multiplier: 1

Instrument :
 BNA_M
 ClientSampleId :
 SSTDICC080

Quant Time: Nov 24 14:54:42 2021
 Quant Method : Z:\svoasrv\HPCHEM1\BNA_M\Methods\8270-BM112421.M
 Quant Title : ASP BNA STANDARDS FOR 5 POINT CALIBRATION
 QLast Update : Wed Nov 24 14:37:22 2021
 Response via : Initial Calibration

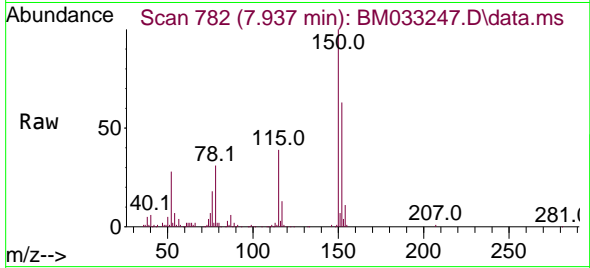
Compound	R.T.	QIon	Response	Conc	Units	Dev(Min)
44) 2,4,5-Trichlorophenol	13.060	196	506044	70.571	ng	94
46) 1,1'-Biphenyl	13.401	154	1726595	71.237	ng	99
47) 2-Chloronaphthalene	13.442	162	1326137	71.268	ng	98
48) 2-Nitroaniline	13.648	65	481355	88.040	ng	93
49) Acenaphthylene	14.289	152	2142158	71.752	ng	100
50) Dimethylphthalate	14.025	163	1672894	68.551	ng	99
51) 2,6-Dinitrotoluene	14.142	165	357866	71.746	ng	# 70
52) Acenaphthene	14.625	154	1279261	71.933	ng	98
53) 3-Nitroaniline	14.472	138	405294	74.661	ng	97
54) 2,4-Dinitrophenol	14.672	184	217347	72.210	ng	# 73
55) Dibenzofuran	14.960	168	2135176	71.517	ng	92
56) 4-Nitrophenol	14.766	139	334705	75.668	ng	# 81
57) 2,4-Dinitrotoluene	14.925	165	493963	73.106	ng	# 67
58) Fluorene	15.607	166	1672424	74.720	ng	98
59) 2,3,4,6-Tetrachlorophenol	15.178	232	453456	70.541	ng	# 84
60) Diethylphthalate	15.378	149	1697392	69.386	ng	95
61) 4-Chlorophenyl-phenyle...	15.601	204	852145	72.009	ng	90
62) 4-Nitroaniline	15.631	138	431614	75.638	ng	# 79
63) Azobenzene	15.889	77	1901134	81.226	ng	91
65) 4,6-Dinitro-2-methylph...	15.683	198	313859	70.124	ng	83
66) n-Nitrosodiphenylamine	15.813	169	1468946	70.573	ng	98
67) 4-Bromophenyl-phenylether	16.489	248	521541	71.475	ng	92
68) Hexachlorobenzene	16.601	284	562696	70.358	ng	# 84
69) Atrazine	16.760	200	298876	42.770	ng	95
70) Pentachlorophenol	16.942	266	382198	76.368	ng	97
71) Phenanthrene	17.342	178	2674459	71.038	ng	99
72) Anthracene	17.430	178	2686611	72.300	ng	99
73) Carbazole	17.701	167	2659547	71.822	ng	97
74) Di-n-butylphthalate	18.254	149	2966463	73.051	ng	# 98
75) Fluoranthene	19.348	202	3133254	72.539	ng	97
77) Benzidine	19.530	184	496829	26.291	ng	99
78) Pyrene	19.707	202	3257660	70.516	ng	100
80) Butylbenzylphthalate	20.595	149	1366802	73.609	ng	95
81) Benzo(a)anthracene	21.442	228	3112044	70.739	ng	100
82) 3,3'-Dichlorobenzidine	21.377	252	1367664	99.022	ng	98
83) Chrysene	21.495	228	2991928	69.225	ng	100
84) Bis(2-ethylhexyl)phtha...	21.360	149	1913138	77.239	ng	95
85) Di-n-octyl phthalate	22.265	149	3251248	73.602	ng	98
87) Indeno(1,2,3-cd)pyrene	26.189	276	3340146	77.290	ng	98
88) Benzo(b)fluoranthene	23.083	252	2949858	69.290	ng	98
89) Benzo(k)fluoranthene	23.136	252	3011252	72.562	ng	99
90) Benzo(a)pyrene	23.689	252	2522974	71.726	ng	99
91) Dibenzo(a,h)anthracene	26.200	278	2794914	77.666	ng	97
92) Benzo(g,h,i)perylene	26.924	276	2803494	78.324	ng	# 96

(#) = qualifier out of range (m) = manual integration (+) = signals summed

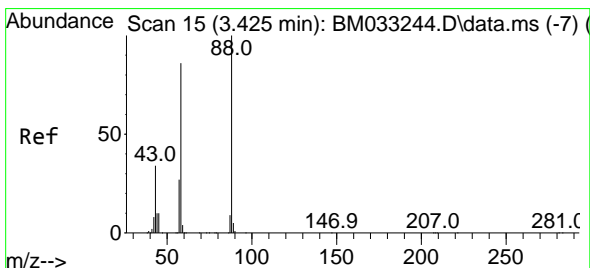
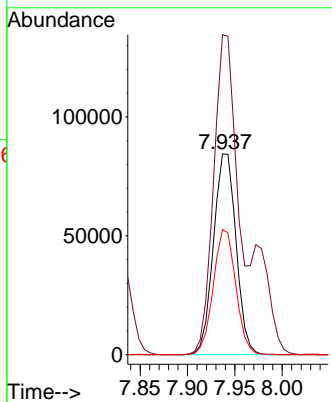
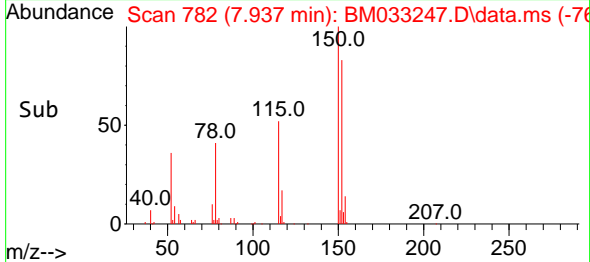


#1
 1,4-Dichlorobenzene-d4
 Concen: 20.000 ng
 RT: 7.937 min Scan# 71
 Delta R.T. -0.000 min
 Lab File: BM033247.D
 Acq: 24 Nov 2021 14:01

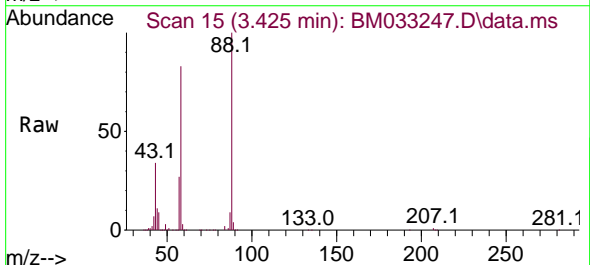
Instrument :
 BNA_M
 ClientSampleId :
 SSTDICC080



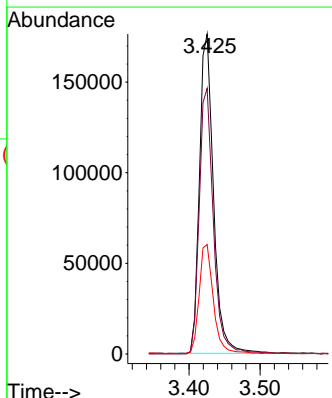
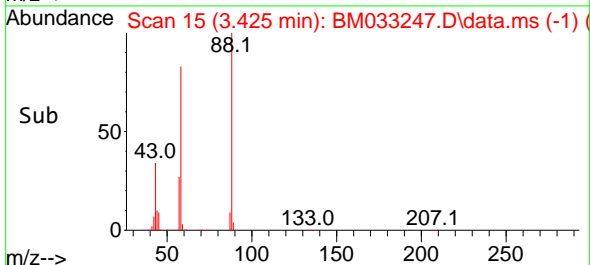
Tgt Ion:152 Resp: 140526
 Ion Ratio Lower Upper
 152 100
 150 159.3 122.4 183.6
 115 62.3 53.8 80.8

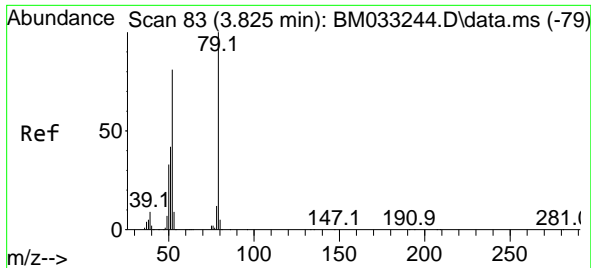


#2
 1,4-Dioxane
 Concen: 70.574 ng
 RT: 3.425 min Scan# 15
 Delta R.T. 0.000 min
 Lab File: BM033247.D
 Acq: 24 Nov 2021 14:01



Tgt Ion: 88 Resp: 242747
 Ion Ratio Lower Upper
 88 100
 58 84.5 50.4 75.6#
 43 34.5 22.2 33.2#

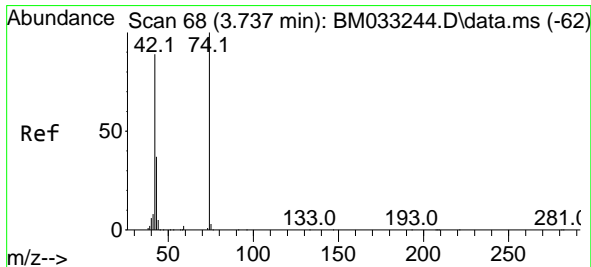
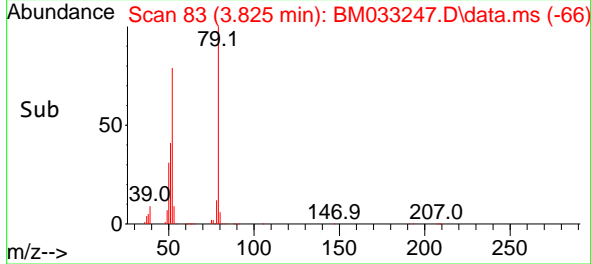
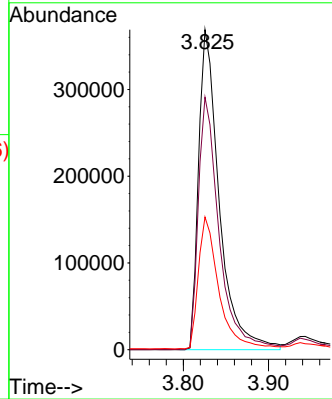
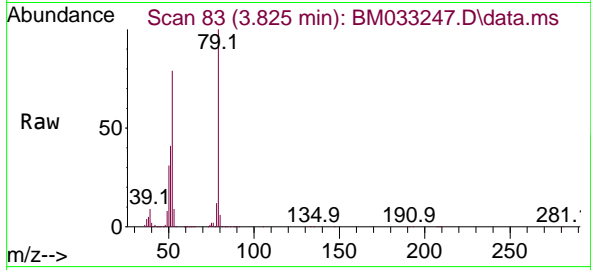




#3
 Pyridine
 Concen: 66.015 ng
 RT: 3.825 min Scan# 81
 Delta R.T. 0.000 min
 Lab File: BM033247.D
 Acq: 24 Nov 2021 14:01

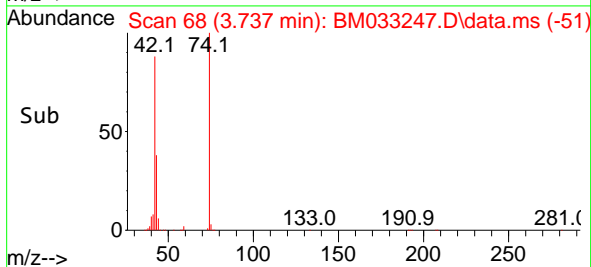
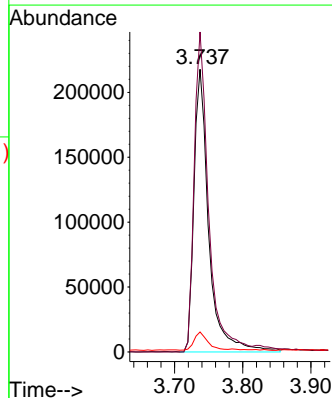
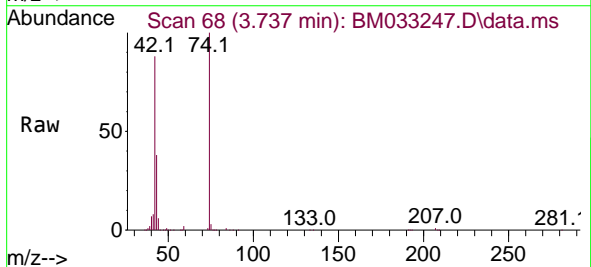
Instrument :
 BNA_M
 ClientSampleId :
 SSTDICC080

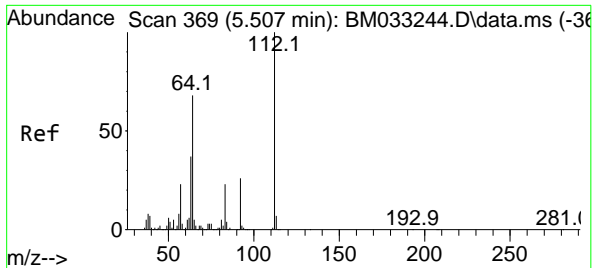
Tgt Ion: 79 Resp: 623421
 Ion Ratio Lower Upper
 79 100
 52 78.9 48.6 73.0#
 51 41.4 27.4 41.2#



#4
 n-Nitrosodimethylamine
 Concen: 81.738 ng
 RT: 3.737 min Scan# 68
 Delta R.T. 0.000 min
 Lab File: BM033247.D
 Acq: 24 Nov 2021 14:01

Tgt Ion: 42 Resp: 327569
 Ion Ratio Lower Upper
 42 100
 74 113.2 99.5 149.3
 44 7.1 57.3 85.9#

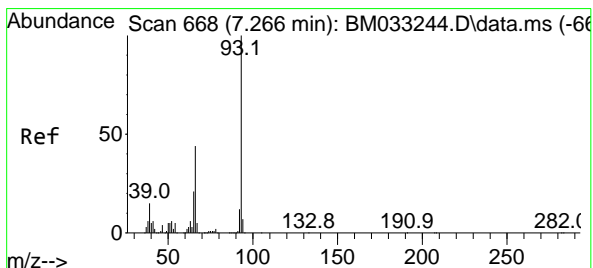
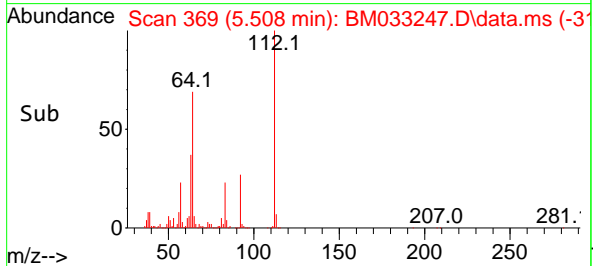
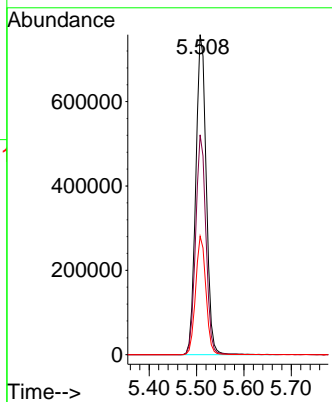
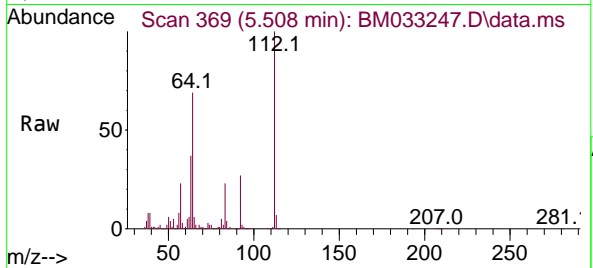




#5
 2-Fluorophenol
 Concen: 144.237 ng
 RT: 5.508 min Scan# 369
 Delta R.T. 0.000 min
 Lab File: BM033247.D
 Acq: 24 Nov 2021 14:01

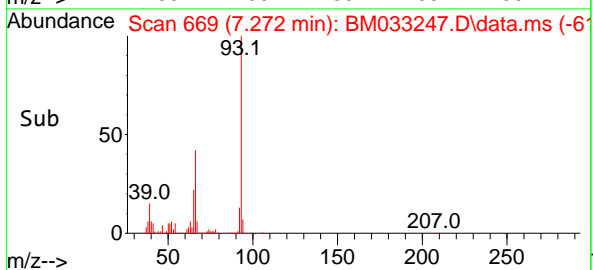
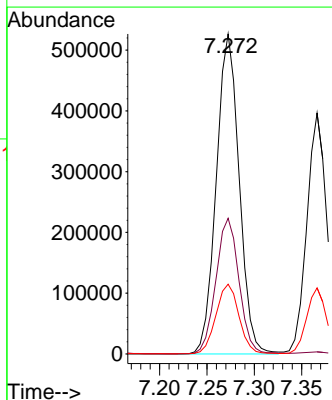
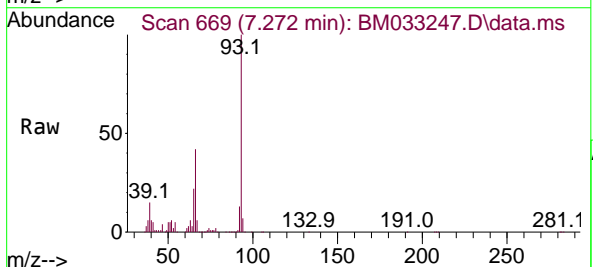
Instrument : BNA_M
 ClientSampleId : SSTDICC080

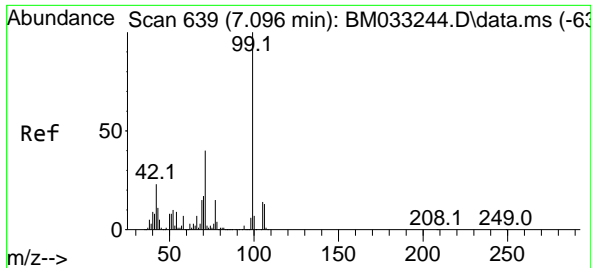
Tgt Ion:112 Resp: 1162620
 Ion Ratio Lower Upper
 112 100
 64 68.7 53.7 80.5
 63 37.0 33.9 50.9



#6
 Aniline
 Concen: 66.064 ng
 RT: 7.272 min Scan# 669
 Delta R.T. 0.006 min
 Lab File: BM033247.D
 Acq: 24 Nov 2021 14:01

Tgt Ion: 93 Resp: 885416
 Ion Ratio Lower Upper
 93 100
 66 42.4 35.3 52.9
 65 21.8 18.7 28.1

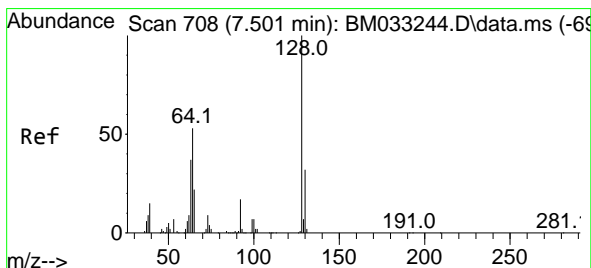
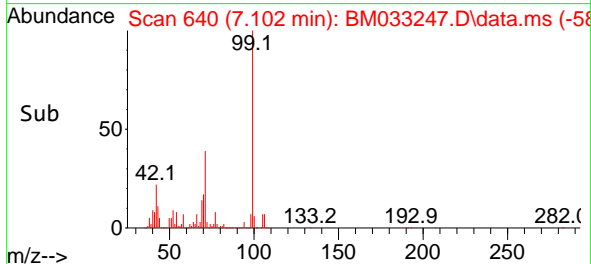
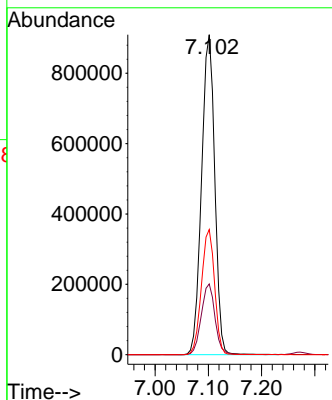
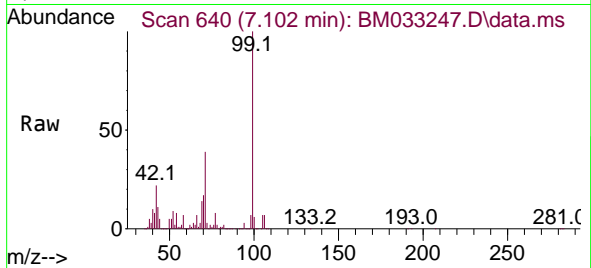




#7
 Phenol-d6
 Concen: 130.416 ng
 RT: 7.102 min Scan# 640
 Delta R.T. 0.006 min
 Lab File: BM033247.D
 Acq: 24 Nov 2021 14:01

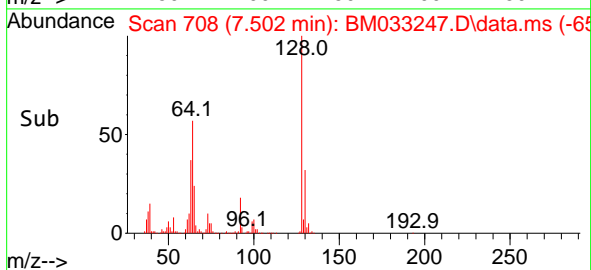
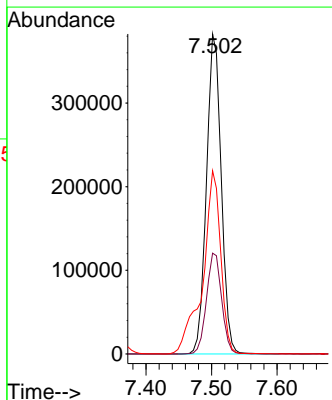
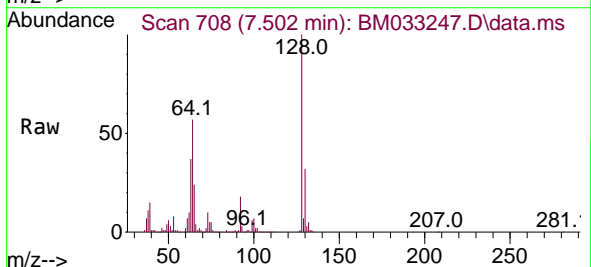
Instrument :
 BNA_M
 ClientSampleId :
 SSTDICC080

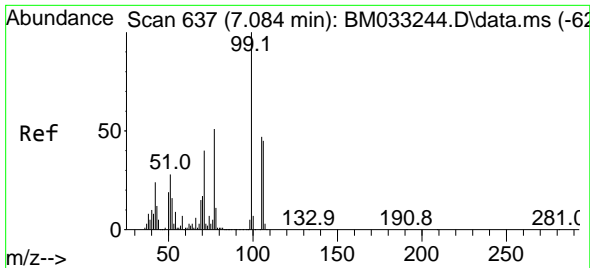
Tgt Ion: 99 Resp: 1565467
 Ion Ratio Lower Upper
 99 100
 42 22.1 23.0 34.6#
 71 39.1 37.8 56.8



#8
 2-Chlorophenol
 Concen: 63.770 ng
 RT: 7.502 min Scan# 708
 Delta R.T. 0.000 min
 Lab File: BM033247.D
 Acq: 24 Nov 2021 14:01

Tgt Ion:128 Resp: 598920
 Ion Ratio Lower Upper
 128 100
 130 31.5 13.0 53.0
 64 57.3 33.4 73.4

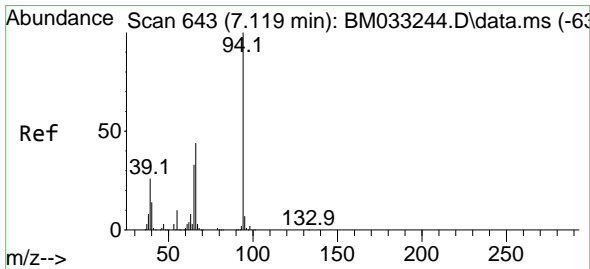
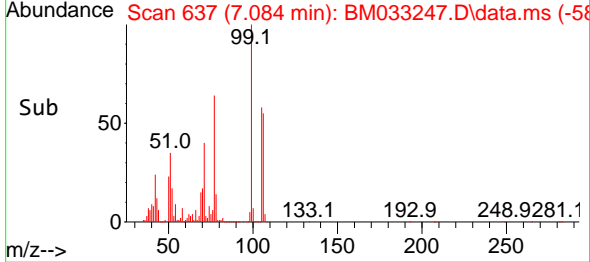
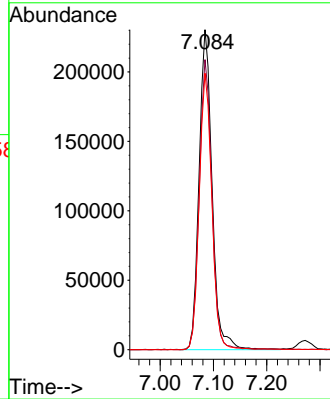
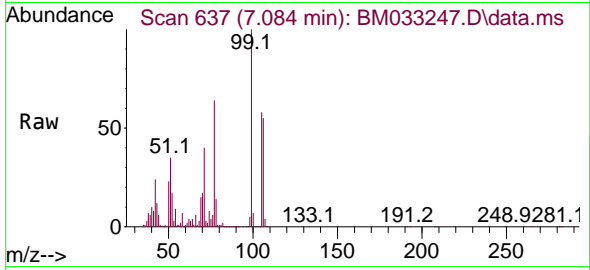




#9
 Benzaldehyde
 Concen: 57.839 ng
 RT: 7.084 min Scan# 611
 Delta R.T. 0.000 min
 Lab File: BM033247.D
 Acq: 24 Nov 2021 14:01

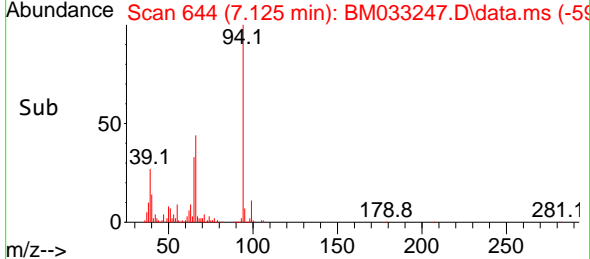
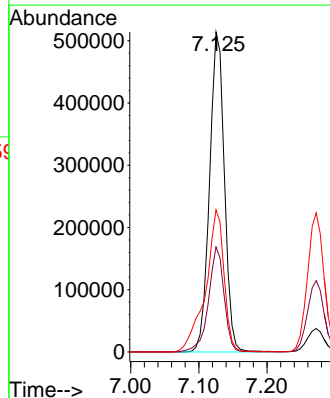
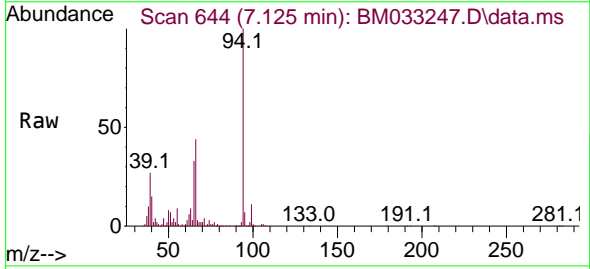
Instrument :
 BNA_M
 ClientSampleId :
 SSTDICC080

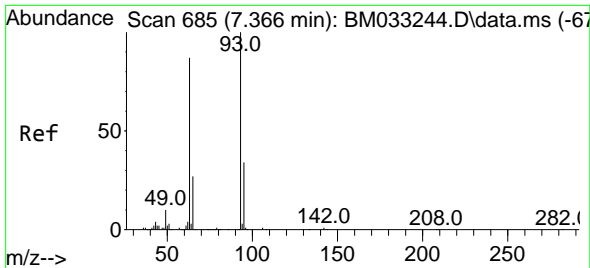
Tgt Ion: 77 Resp: 391842
 Ion Ratio Lower Upper
 77 100
 105 90.7 68.9 108.9
 106 86.4 61.2 101.2



#10
 Phenol
 Concen: 67.758 ng
 RT: 7.125 min Scan# 644
 Delta R.T. 0.006 min
 Lab File: BM033247.D
 Acq: 24 Nov 2021 14:01

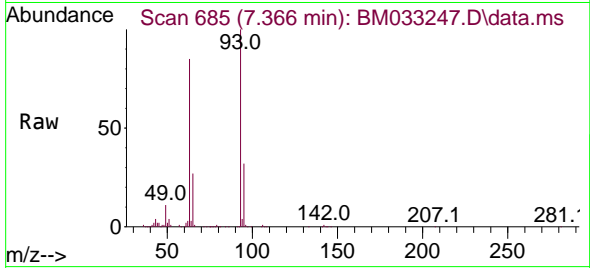
Tgt Ion: 94 Resp: 780651
 Ion Ratio Lower Upper
 94 100
 65 32.8 16.9 56.9
 66 44.4 30.0 70.0



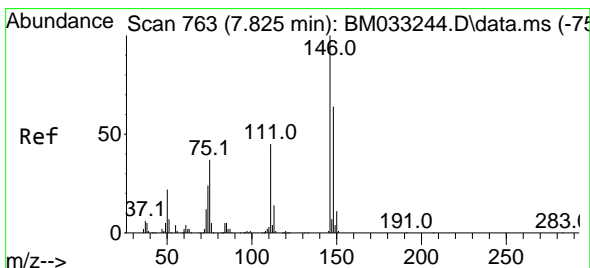
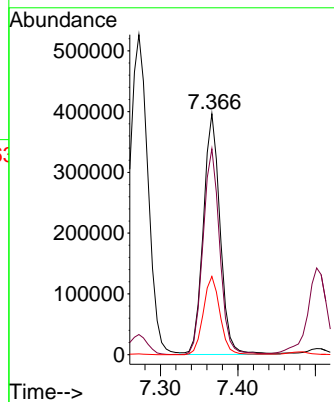
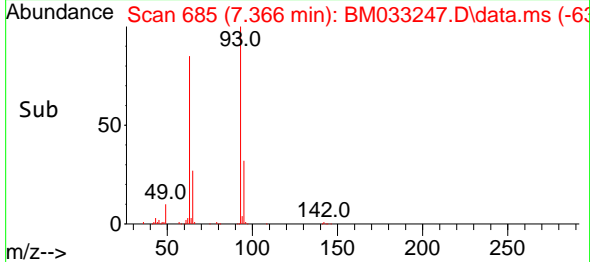


#11
 bis(2-Chloroethyl)ether
 Concen: 65.738 ng
 RT: 7.366 min Scan# 685
 Delta R.T. 0.000 min
 Lab File: BM033247.D
 Acq: 24 Nov 2021 14:01

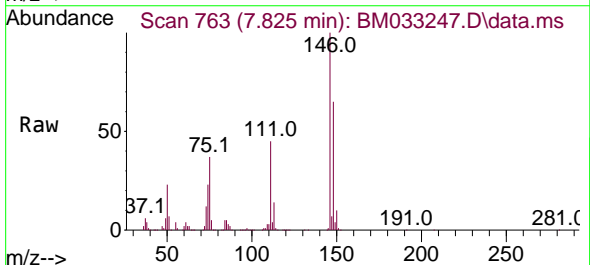
Instrument :
 BNA_M
 ClientSampleId :
 SSTDICC080



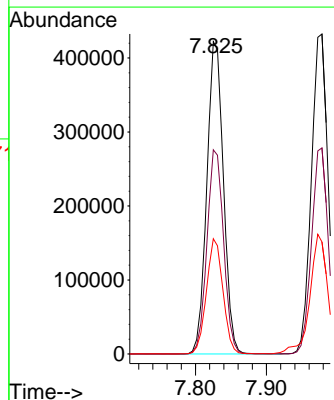
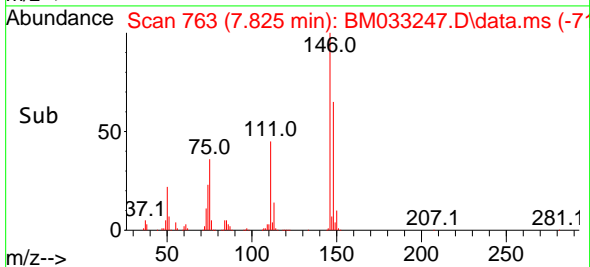
Tgt Ion: 93 Resp: 597990
 Ion Ratio Lower Upper
 93 100
 63 85.5 63.7 103.7
 95 32.5 12.4 52.4

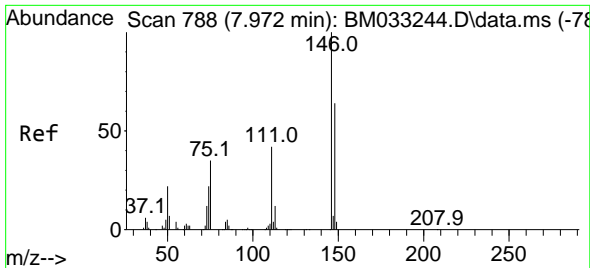


#12
 1,3-Dichlorobenzene
 Concen: 66.283 ng
 RT: 7.825 min Scan# 763
 Delta R.T. 0.000 min
 Lab File: BM033247.D
 Acq: 24 Nov 2021 14:01



Tgt Ion: 146 Resp: 687822
 Ion Ratio Lower Upper
 146 100
 148 65.4 52.3 78.5
 75 36.9 34.2 51.2





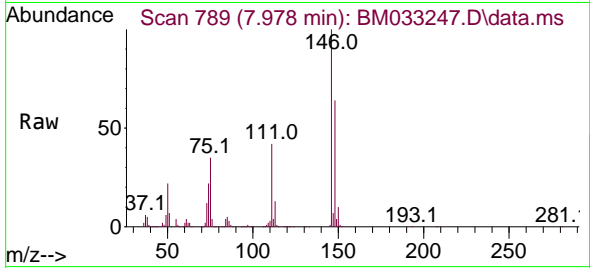
#13
 1,4-Dichlorobenzene
 Concen: 66.473 ng
 RT: 7.978 min Scan# 789
 Delta R.T. 0.006 min
 Lab File: BM033247.D
 Acq: 24 Nov 2021 14:01

Instrument :

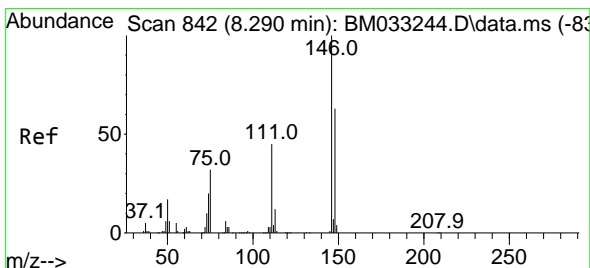
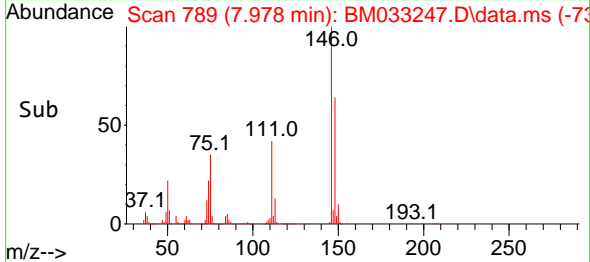
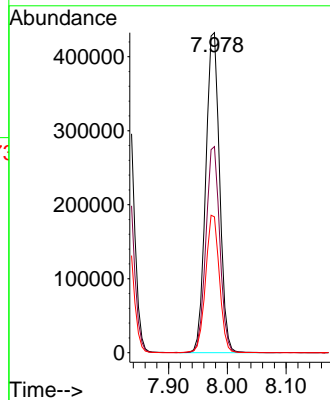
BNA_M

ClientSampleId :

SSTDICC080

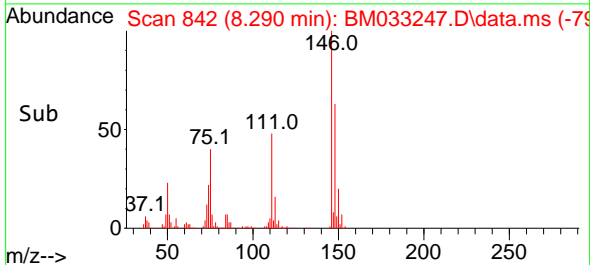
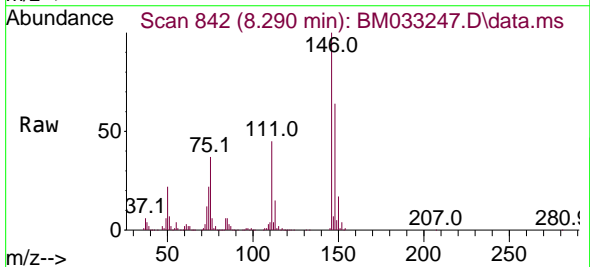
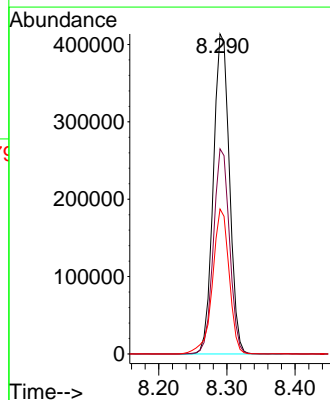


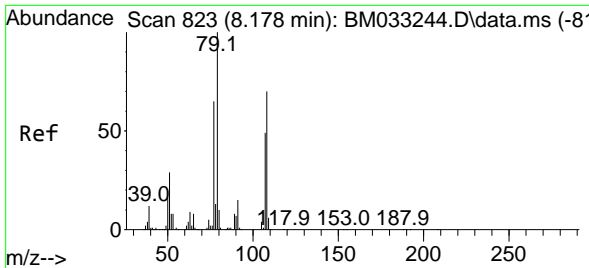
Tgt Ion:146 Resp: 706662
 Ion Ratio Lower Upper
 146 100
 148 64.4 51.1 76.7
 111 42.5 35.3 52.9



#14
 1,2-Dichlorobenzene
 Concen: 65.068 ng
 RT: 8.290 min Scan# 842
 Delta R.T. 0.000 min
 Lab File: BM033247.D
 Acq: 24 Nov 2021 14:01

Tgt Ion:146 Resp: 680697
 Ion Ratio Lower Upper
 146 100
 148 64.1 51.7 77.5
 111 45.3 38.2 57.2



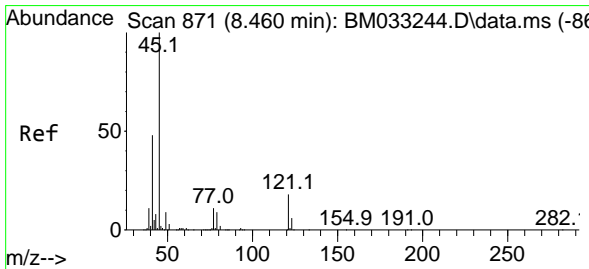
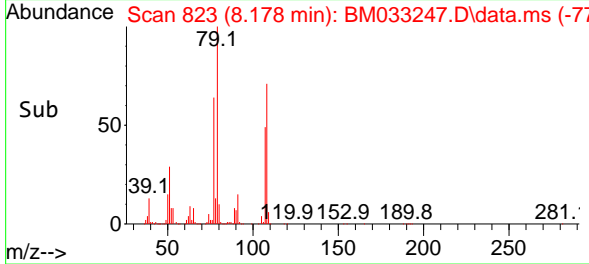
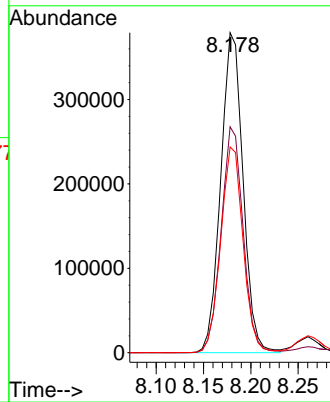
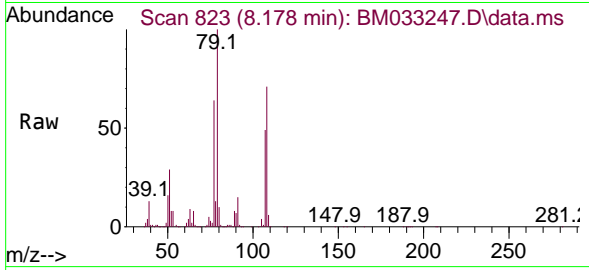


#15
 Benzyl Alcohol
 Concen: 72.612 ng
 RT: 8.178 min Scan# 81
 Delta R.T. 0.000 min
 Lab File: BM033247.D
 Acq: 24 Nov 2021 14:01

Instrument :
 BNA_M
 ClientSampleId :
 SSTDICC080

Tgt Ion: 79 Resp: 620420

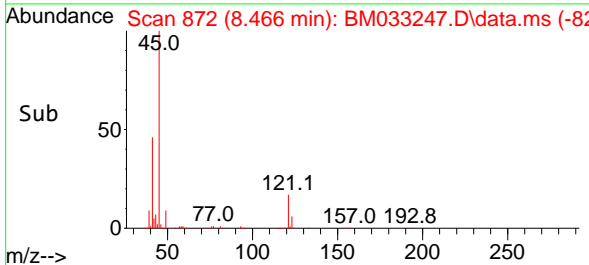
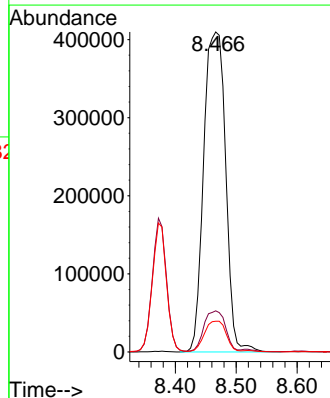
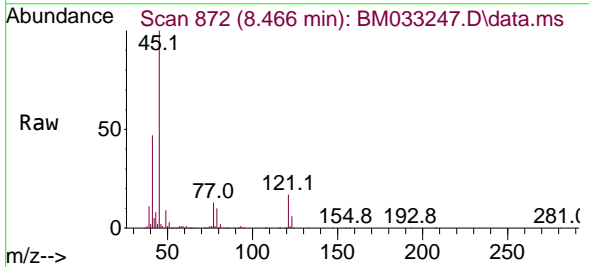
Ion	Ratio	Lower	Upper
79	100		
108	70.6	53.6	80.4
77	64.3	57.7	86.5

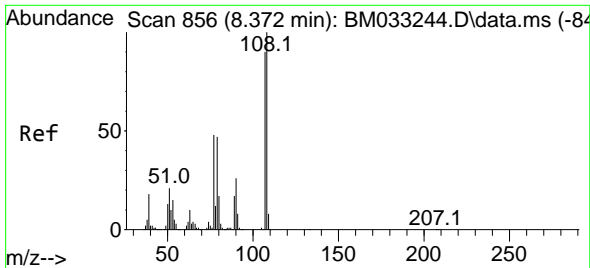


#16
 2,2'-oxybis(1-Chloropropane)
 Concen: 78.473 ng
 RT: 8.466 min Scan# 872
 Delta R.T. 0.006 min
 Lab File: BM033247.D
 Acq: 24 Nov 2021 14:01

Tgt Ion: 45 Resp: 1026055

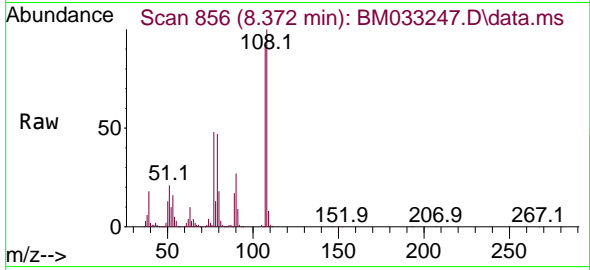
Ion	Ratio	Lower	Upper
45	100		
77	12.9	0.0	36.1
79	9.6	0.0	30.5



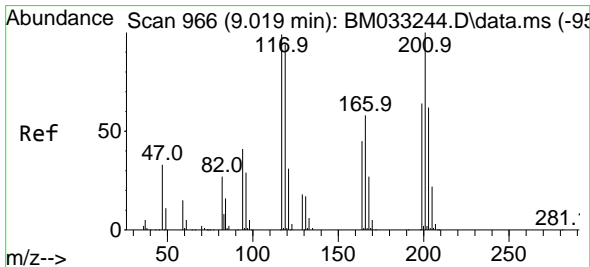
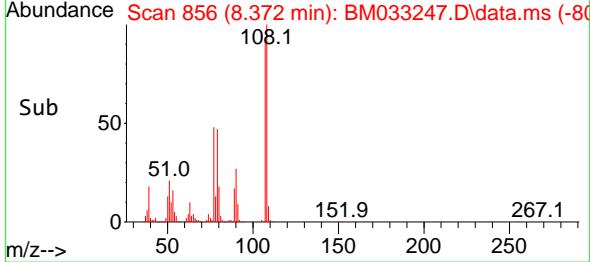
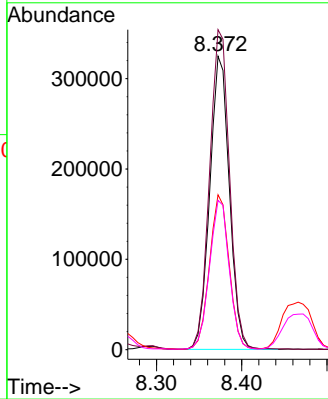


#17
 2-Methylphenol
 Concen: 64.233 ng
 RT: 8.372 min Scan# 856
 Delta R.T. 0.000 min
 Lab File: BM033247.D
 Acq: 24 Nov 2021 14:01

Instrument :
 BNA_M
 ClientSampleId :
 SSTDICC080

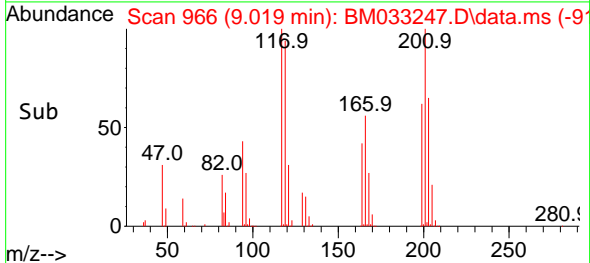
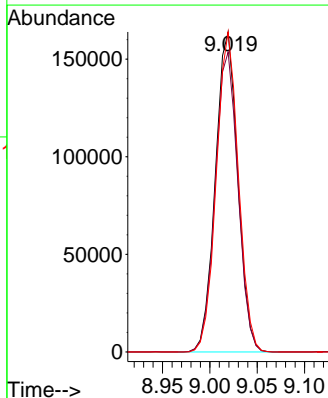
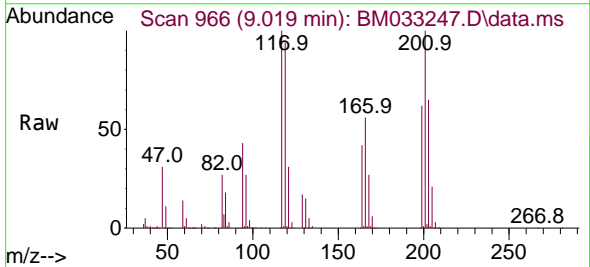


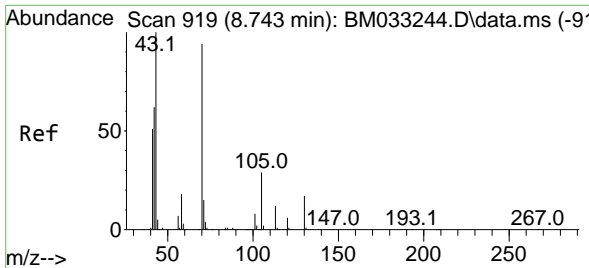
Tgt Ion	Resp	Lower	Upper
107	100		
108	109.0	87.9	131.9
77	52.7	48.2	72.2
79	50.8	44.7	67.1



#18
 Hexachloroethane
 Concen: 71.764 ng
 RT: 9.019 min Scan# 966
 Delta R.T. 0.000 min
 Lab File: BM033247.D
 Acq: 24 Nov 2021 14:01

Tgt Ion	Resp	Lower	Upper
117	100		
119	93.8	77.7	116.5
201	100.0	70.2	105.2

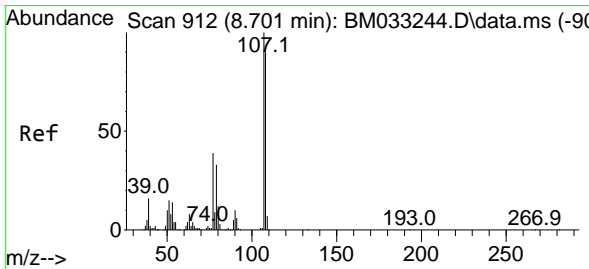
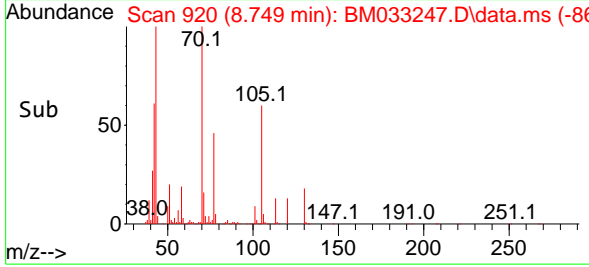
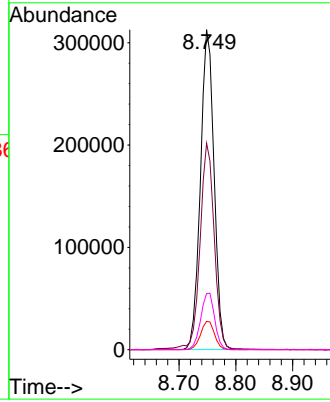
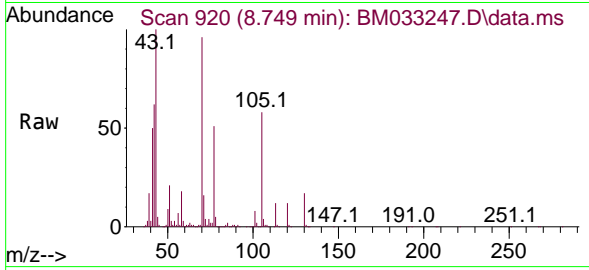




#19
 n-Nitroso-di-n-propylamine
 Concen: 70.884 ng
 RT: 8.749 min Scan# 919
 Delta R.T. 0.006 min
 Lab File: BM033247.D
 Acq: 24 Nov 2021 14:01

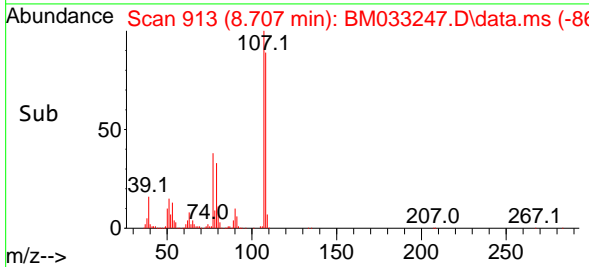
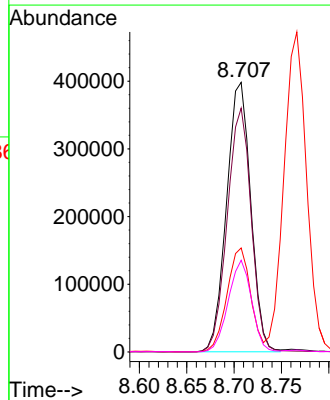
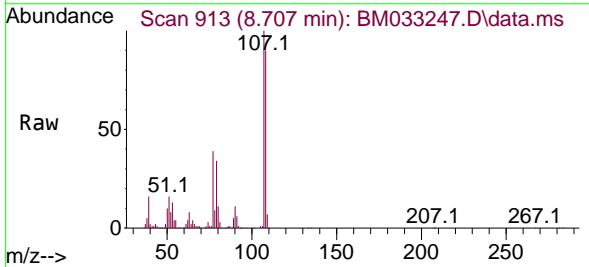
Instrument :
 BNA_M
 ClientSampleId :
 SSTDICC080

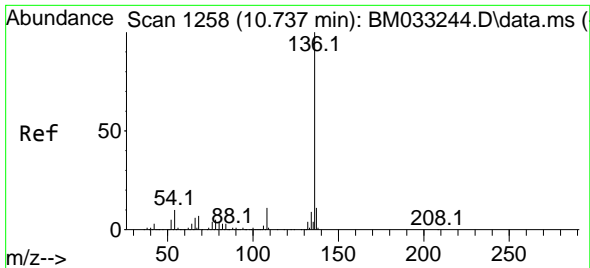
Tgt Ion: 70 Resp: 520959
 Ion Ratio Lower Upper
 70 100
 42 64.5 56.3 84.5
 101 8.8 7.8 11.6
 130 17.6 14.2 21.4



#20
 3+4-Methylphenols
 Concen: 63.887 ng
 RT: 8.707 min Scan# 913
 Delta R.T. 0.006 min
 Lab File: BM033247.D
 Acq: 24 Nov 2021 14:01

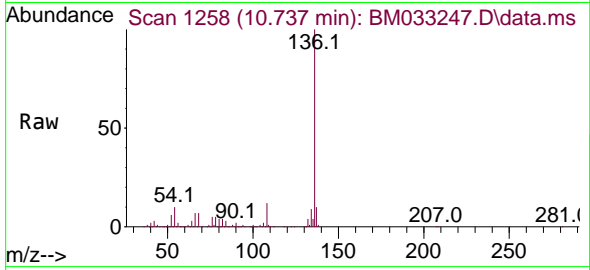
Tgt Ion: 107 Resp: 707681
 Ion Ratio Lower Upper
 107 100
 108 90.5 67.6 107.6
 77 38.6 21.9 61.9
 79 34.0 15.3 55.3



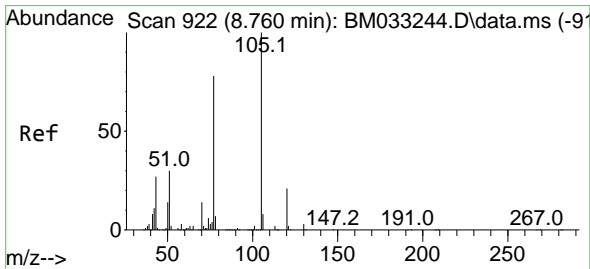
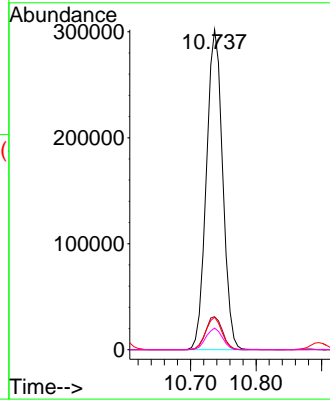
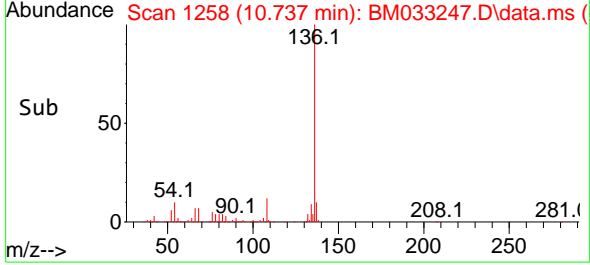


#21
 Naphthalene-d8
 Concen: 20.000 ng
 RT: 10.737 min Scan# 11
 Delta R.T. 0.000 min
 Lab File: BM033247.D
 Acq: 24 Nov 2021 14:01

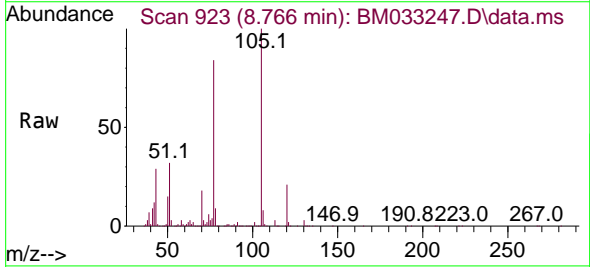
Instrument :
 BNA_M
 ClientSampleId :
 SSTDICC080



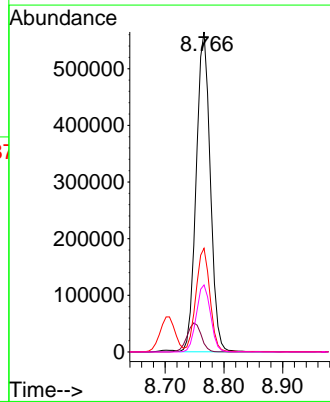
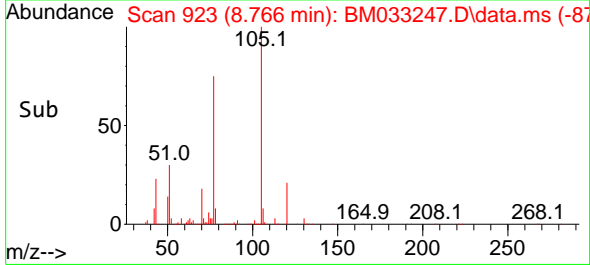
Tgt Ion:136 Resp: 521181
 Ion Ratio Lower Upper
 136 100
 137 10.3 8.7 13.1
 54 10.2 7.4 11.0
 68 6.8 3.8 5.8#

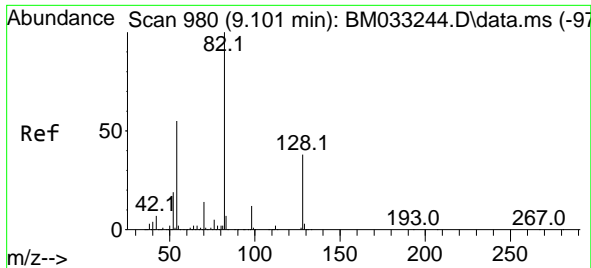


#22
 Acetophenone
 Concen: 73.492 ng
 RT: 8.766 min Scan# 923
 Delta R.T. 0.006 min
 Lab File: BM033247.D
 Acq: 24 Nov 2021 14:01



Tgt Ion:105 Resp: 935626
 Ion Ratio Lower Upper
 105 100
 71 2.6 3.8 5.6#
 51 32.4 29.5 44.3
 120 21.0 16.3 24.5

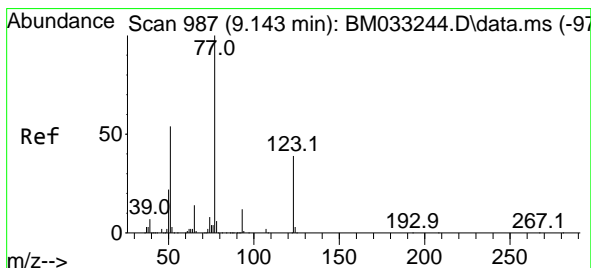
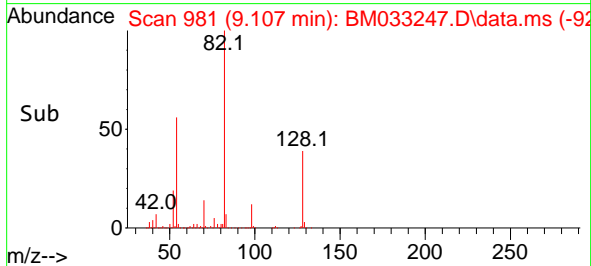
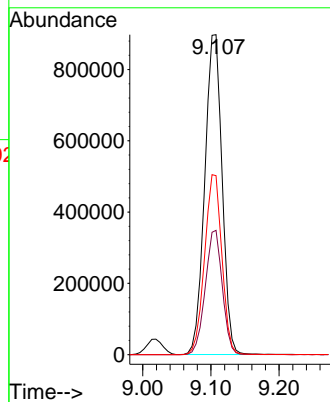
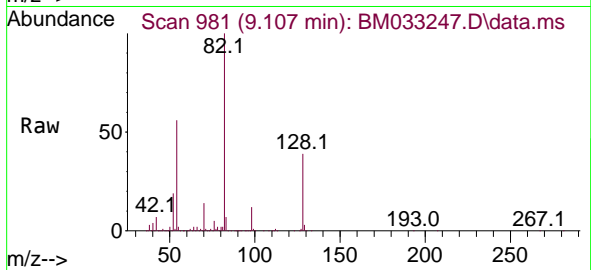




#23
 Nitrobenzene-d5
 Concen: 167.329 ng
 RT: 9.107 min Scan# 981
 Delta R.T. 0.006 min
 Lab File: BM033247.D
 Acq: 24 Nov 2021 14:01

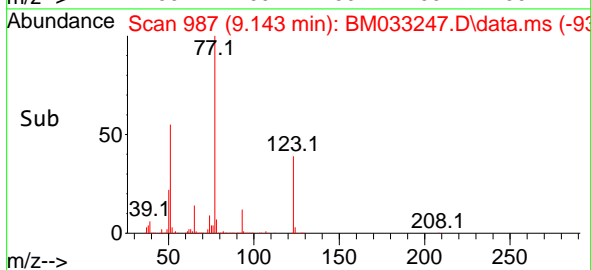
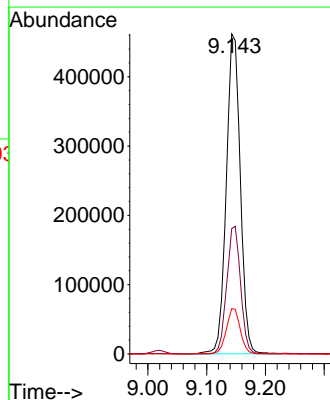
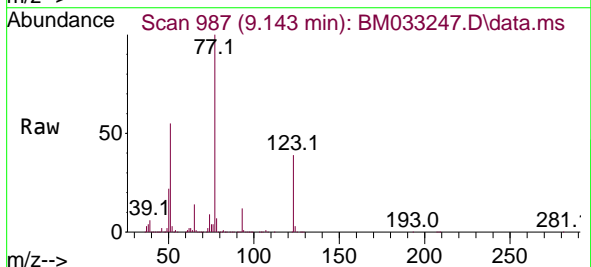
Instrument :
 BNA_M
 ClientSampleId :
 SSTDICC080

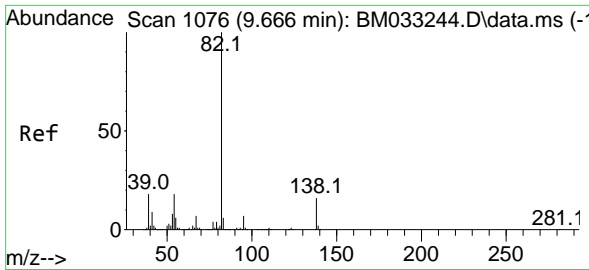
Tgt Ion: 82 Resp: 1593352
 Ion Ratio Lower Upper
 82 100
 128 38.8 29.0 43.6
 54 56.0 45.8 68.8



#24
 Nitrobenzene
 Concen: 83.825 ng
 RT: 9.143 min Scan# 987
 Delta R.T. 0.000 min
 Lab File: BM033247.D
 Acq: 24 Nov 2021 14:01

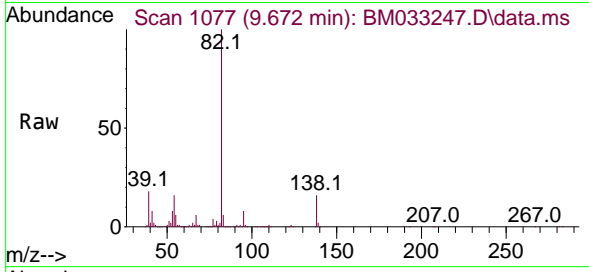
Tgt Ion: 77 Resp: 764795
 Ion Ratio Lower Upper
 77 100
 123 39.1 30.1 45.1
 65 14.1 11.7 17.5



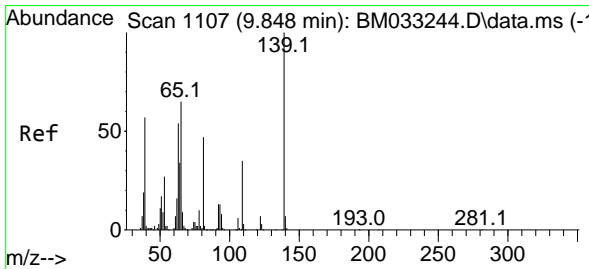
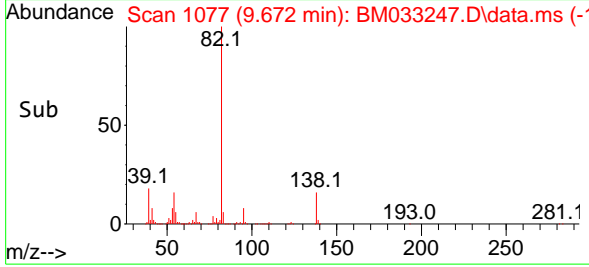
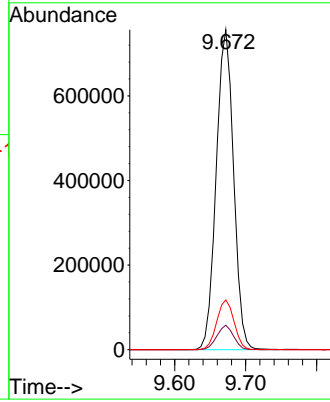


#25
 Isophorone
 Concen: 76.089 ng
 RT: 9.672 min Scan# 1107
 Delta R.T. 0.006 min
 Lab File: BM033247.D
 Acq: 24 Nov 2021 14:01

Instrument :
 BNA_M
 ClientSampleId :
 SSTDICC080

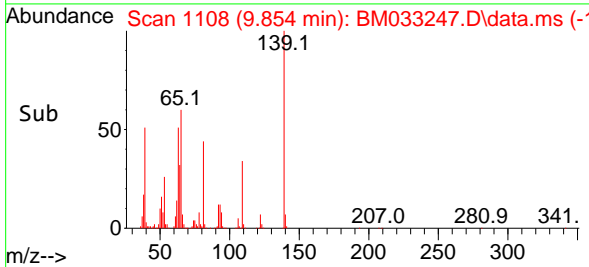
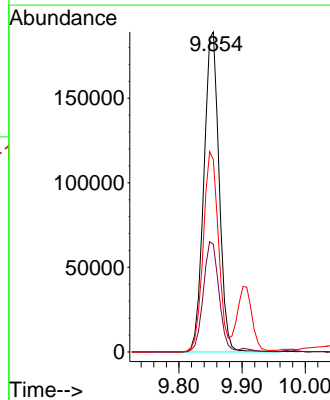
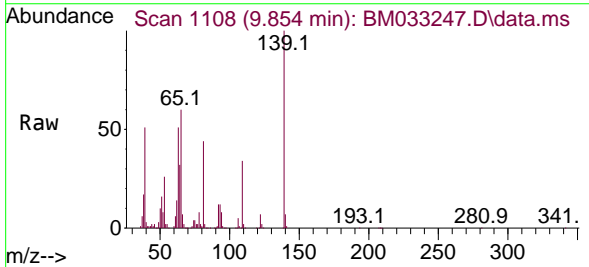


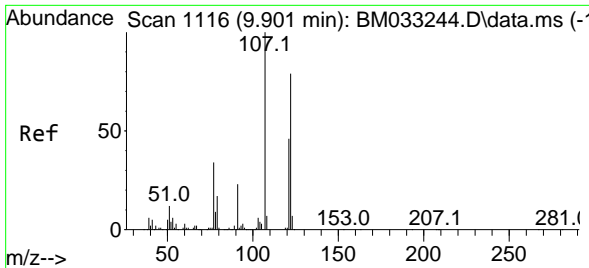
Tgt Ion: 82 Resp: 1280301
 Ion Ratio Lower Upper
 82 100
 95 7.7 6.4 9.6
 138 15.5 12.4 18.6



#26
 2-Nitrophenol
 Concen: 74.403 ng
 RT: 9.854 min Scan# 1108
 Delta R.T. 0.006 min
 Lab File: BM033247.D
 Acq: 24 Nov 2021 14:01

Tgt Ion: 139 Resp: 316904
 Ion Ratio Lower Upper
 139 100
 109 33.6 34.8 52.2#
 65 60.2 59.9 89.9

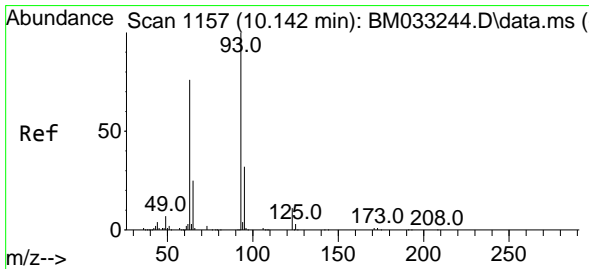
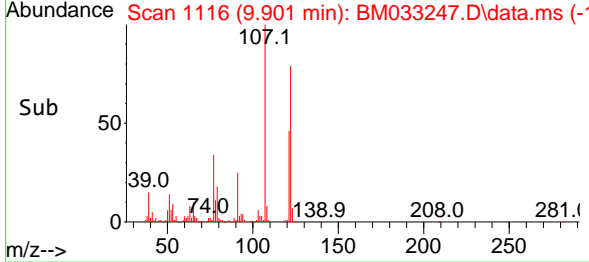
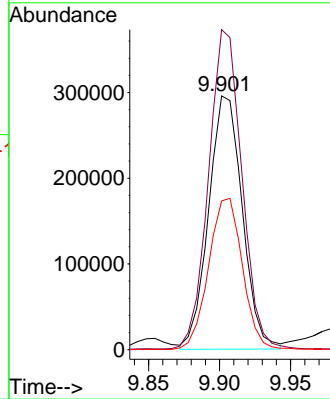
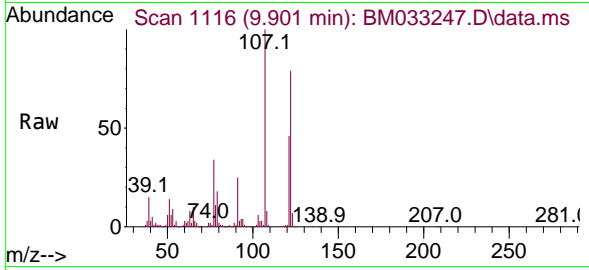




#27
 2,4-Dimethylphenol
 Concen: 69.662 ng
 RT: 9.901 min Scan# 1116
 Delta R.T. 0.000 min
 Lab File: BM033247.D
 Acq: 24 Nov 2021 14:01

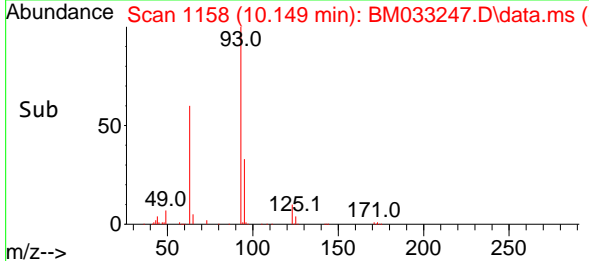
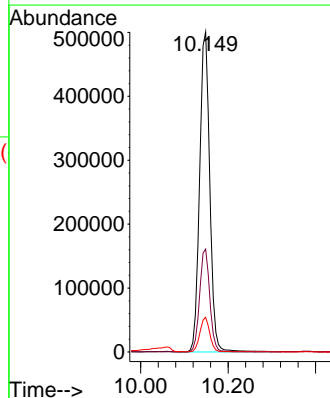
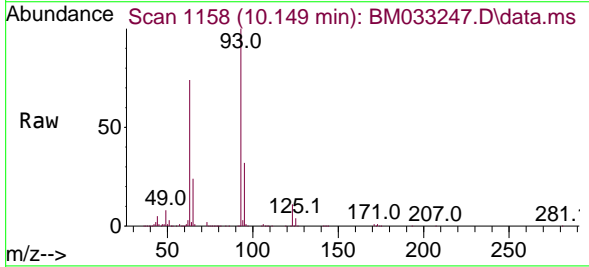
Instrument :
 BNA_M
 ClientSampleId :
 SSTDICC080

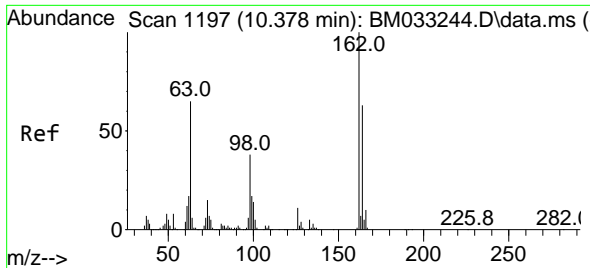
Tgt Ion:122 Resp: 488212
 Ion Ratio Lower Upper
 122 100
 107 126.1 100.6 150.8
 121 58.6 47.3 70.9



#28
 bis(2-Chloroethoxy)methane
 Concen: 72.254 ng
 RT: 10.149 min Scan# 1158
 Delta R.T. 0.006 min
 Lab File: BM033247.D
 Acq: 24 Nov 2021 14:01

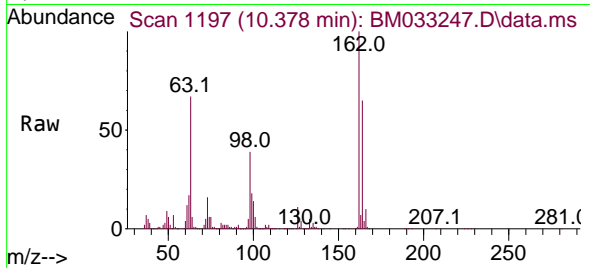
Tgt Ion: 93 Resp: 812313
 Ion Ratio Lower Upper
 93 100
 95 32.1 25.8 38.8
 123 10.8 8.8 13.2



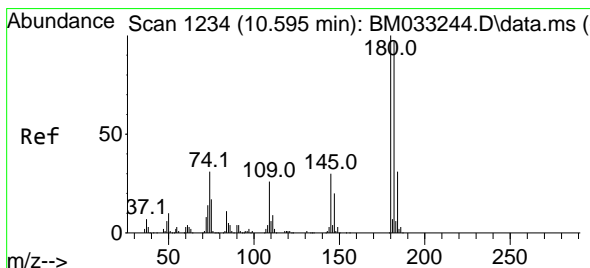
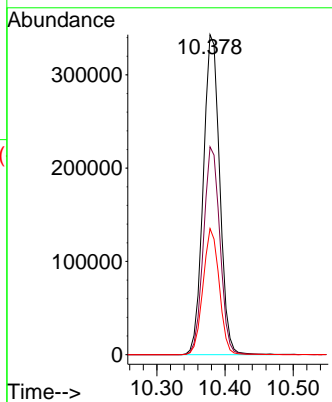
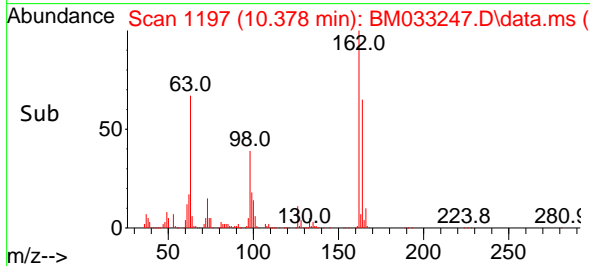


#29
 2,4-Dichlorophenol
 Concen: 71.615 ng
 RT: 10.378 min Scan# 1197
 Delta R.T. 0.000 min
 Lab File: BM033247.D
 Acq: 24 Nov 2021 14:01

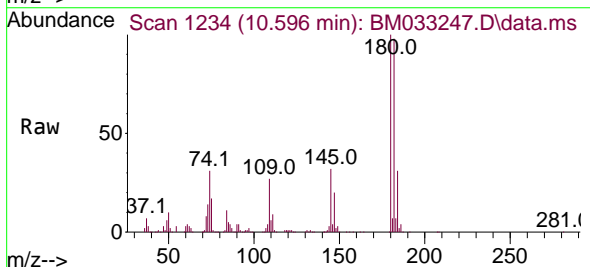
Instrument : BNA_M
 ClientSampleId : SSTDICC080



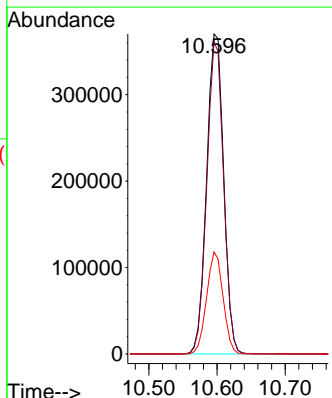
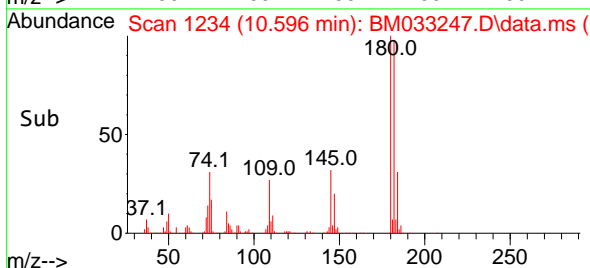
Tgt Ion:162 Resp: 575594
 Ion Ratio Lower Upper
 162 100
 164 64.9 47.4 87.4
 98 39.4 18.9 58.9

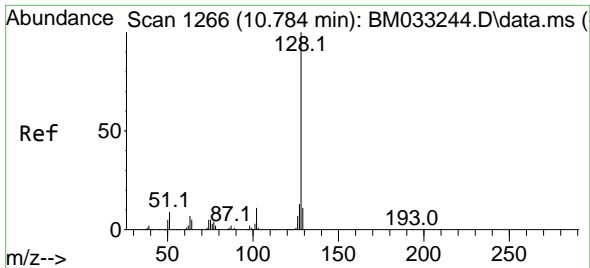


#30
 1,2,4-Trichlorobenzene
 Concen: 72.119 ng
 RT: 10.596 min Scan# 1234
 Delta R.T. 0.000 min
 Lab File: BM033247.D
 Acq: 24 Nov 2021 14:01



Tgt Ion:180 Resp: 644219
 Ion Ratio Lower Upper
 180 100
 182 97.5 75.5 113.3
 145 31.9 26.2 39.2

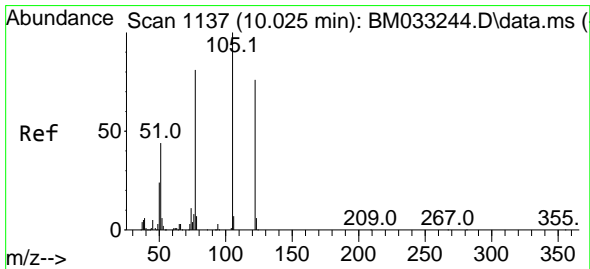
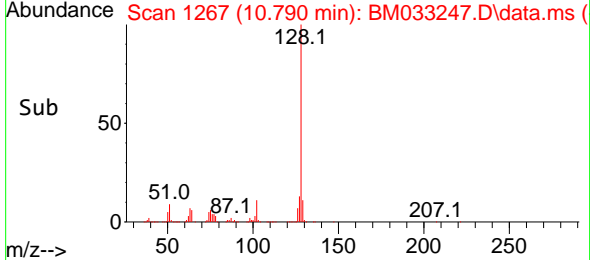
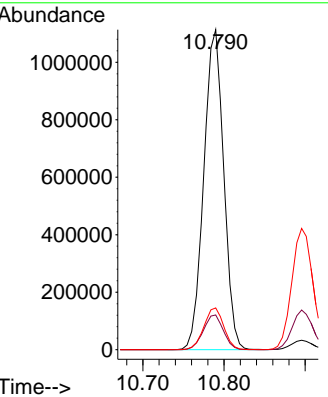
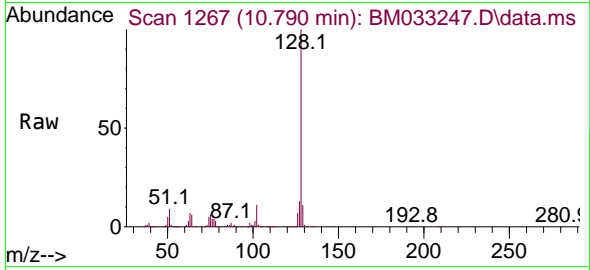




#31
 Naphthalene
 Concen: 70.262 ng
 RT: 10.790 min Scan# 1143
 Delta R.T. 0.006 min
 Lab File: BM033247.D
 Acq: 24 Nov 2021 14:01

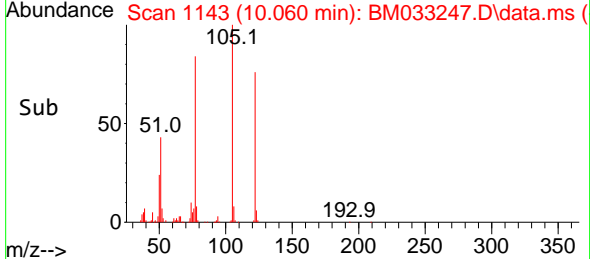
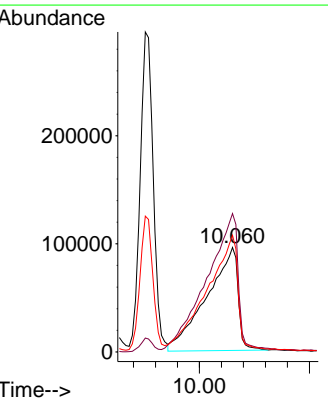
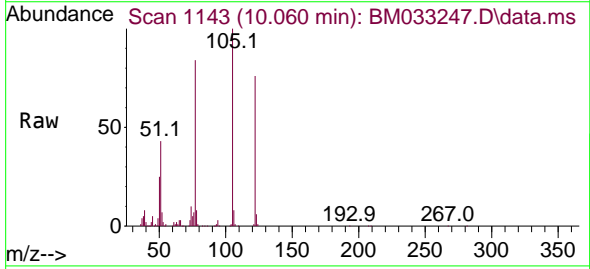
Instrument :
 BNA_M
 ClientSampleId :
 SSTDICC080

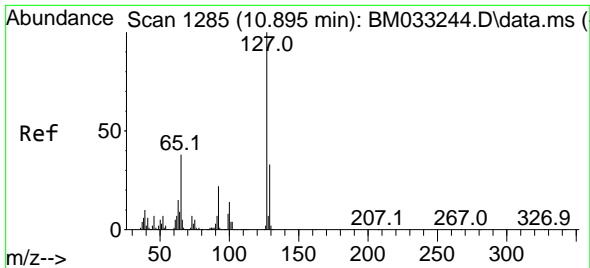
Tgt Ion:128 Resp: 1900781
 Ion Ratio Lower Upper
 128 100
 129 10.9 8.6 13.0
 127 13.1 10.4 15.6



#32
 Benzoic acid
 Concen: 66.064 ng
 RT: 10.060 min Scan# 1143
 Delta R.T. 0.035 min
 Lab File: BM033247.D
 Acq: 24 Nov 2021 14:01

Tgt Ion:122 Resp: 374418
 Ion Ratio Lower Upper
 122 100
 105 132.4 120.3 160.3
 77 111.6 100.0 140.0





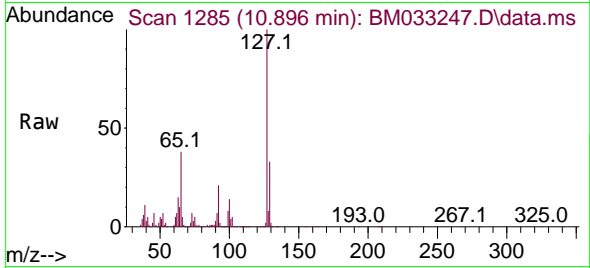
#33
 4-Chloroaniline
 Concen: 67.819 ng
 RT: 10.896 min Scan# 11
 Delta R.T. 0.000 min
 Lab File: BM033247.D
 Acq: 24 Nov 2021 14:01

Instrument :

BNA_M

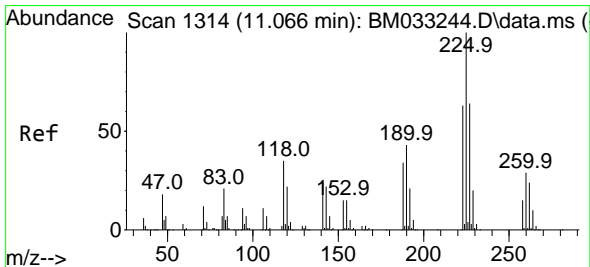
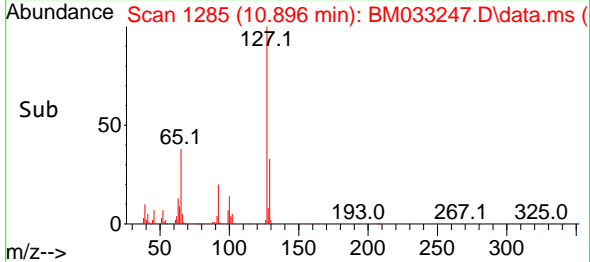
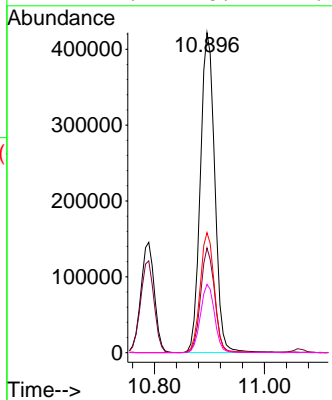
ClientSampleId :

SSTDICC080



Tgt Ion:127 Resp: 766110

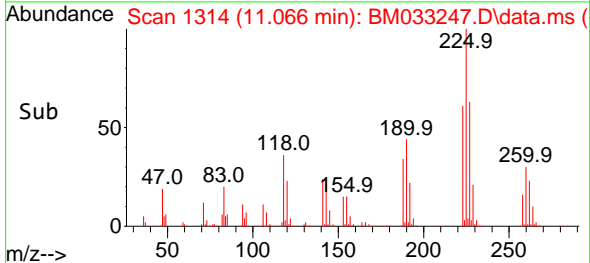
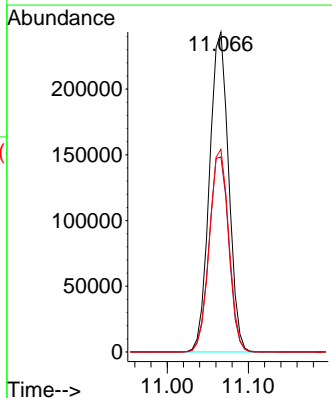
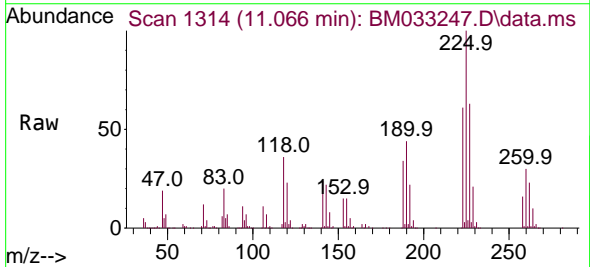
Ion	Ratio	Lower	Upper
127	100		
129	32.8	25.6	38.4
65	37.5	30.4	45.6
92	21.4	16.2	24.4

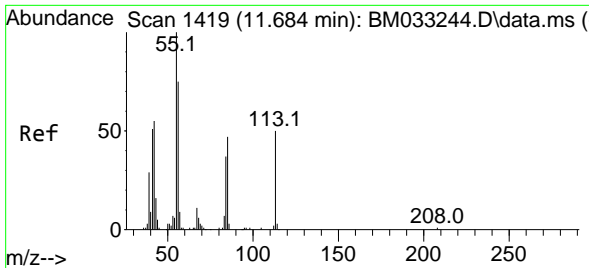


#34
 Hexachlorobutadiene
 Concen: 73.495 ng
 RT: 11.066 min Scan# 1314
 Delta R.T. 0.000 min
 Lab File: BM033247.D
 Acq: 24 Nov 2021 14:01

Tgt Ion:225 Resp: 399094

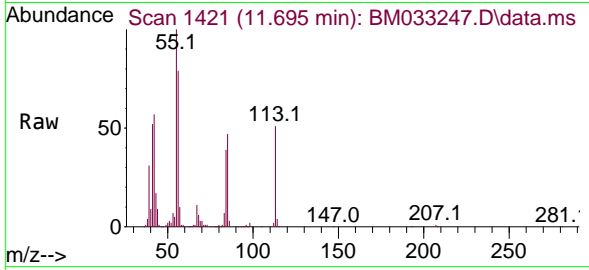
Ion	Ratio	Lower	Upper
225	100		
223	61.0	52.6	78.8
227	63.3	51.2	76.8



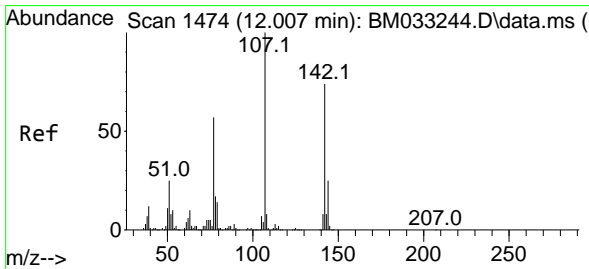
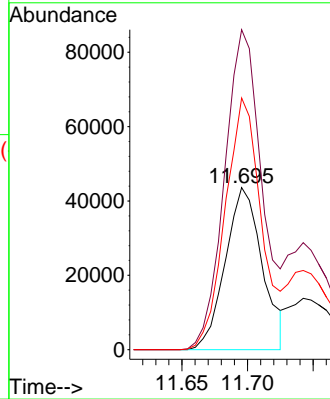
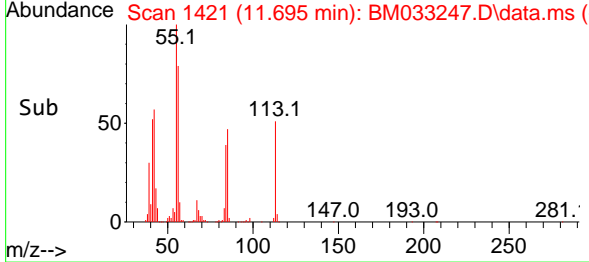


#35
 Caprolactam
 Concen: 31.695 ng
 RT: 11.695 min Scan# 1419
 Delta R.T. 0.012 min
 Lab File: BM033247.D
 Acq: 24 Nov 2021 14:01

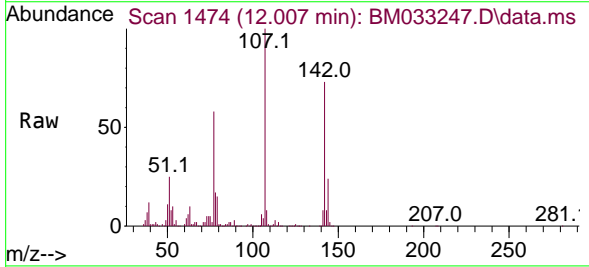
Instrument :
 BNA_M
 ClientSampleId :
 SSTDICC080



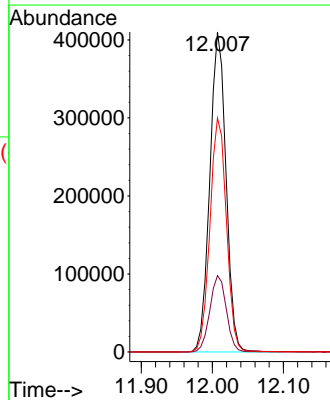
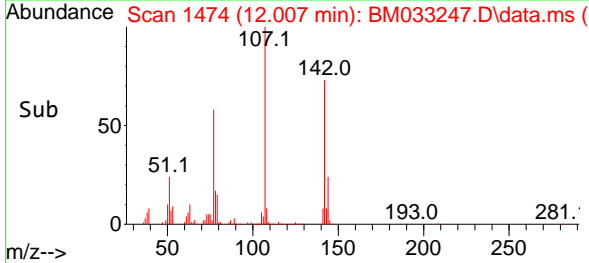
Tgt Ion:113 Resp: 85422
 Ion Ratio Lower Upper
 113 100
 55 197.4 170.5 210.5
 56 155.3 125.2 165.2

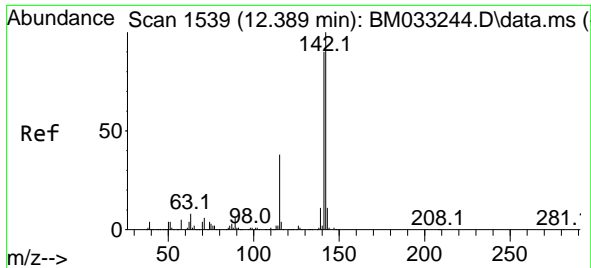


#36
 4-Chloro-3-methylphenol
 Concen: 70.743 ng
 RT: 12.007 min Scan# 1474
 Delta R.T. 0.000 min
 Lab File: BM033247.D
 Acq: 24 Nov 2021 14:01



Tgt Ion:107 Resp: 650436
 Ion Ratio Lower Upper
 107 100
 144 23.9 19.3 28.9
 142 73.1 60.5 90.7



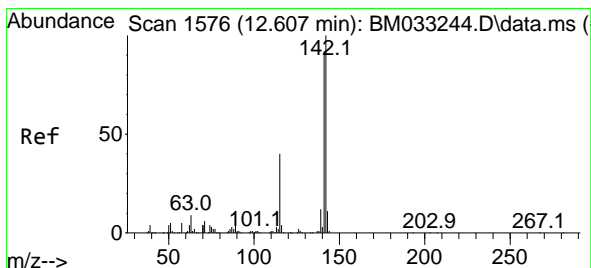
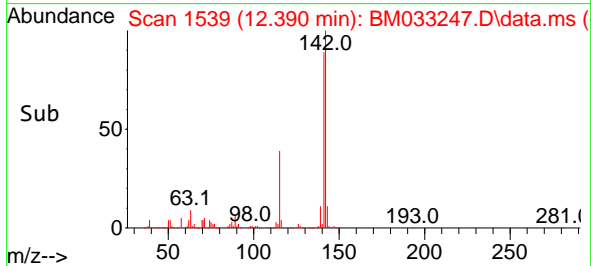
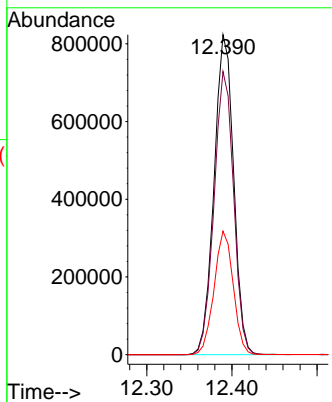
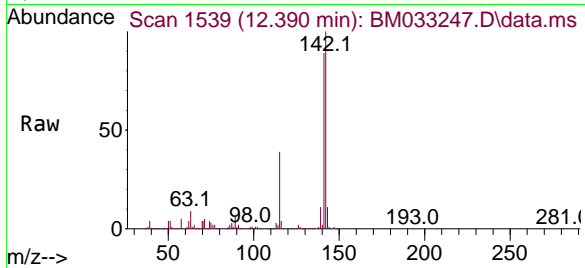


#37
 2-Methylnaphthalene
 Concen: 69.065 ng
 RT: 12.390 min Scan# 1539
 Delta R.T. 0.000 min
 Lab File: BM033247.D
 Acq: 24 Nov 2021 14:01

Instrument : BNA_M
 ClientSampleId : BM033247.D
 SSTDICC080

Tgt Ion:142 Resp: 1313147

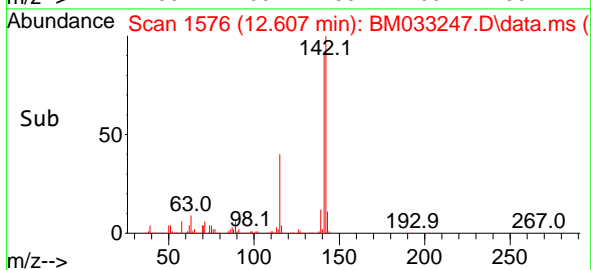
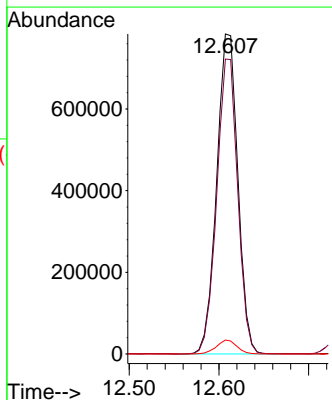
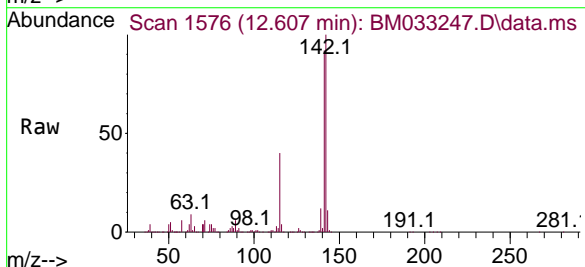
Ion	Ratio	Lower	Upper
142	100		
141	88.5	71.8	107.6
115	38.6	36.3	54.5

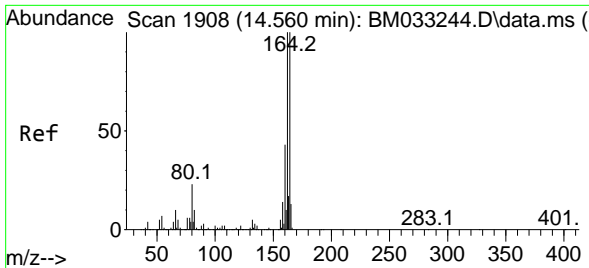


#38
 1-Methylnaphthalene
 Concen: 68.133 ng
 RT: 12.607 min Scan# 1576
 Delta R.T. 0.000 min
 Lab File: BM033247.D
 Acq: 24 Nov 2021 14:01

Tgt Ion:142 Resp: 1281237

Ion	Ratio	Lower	Upper
142	100		
141	92.2	75.6	113.4
116	4.4	4.0	6.0

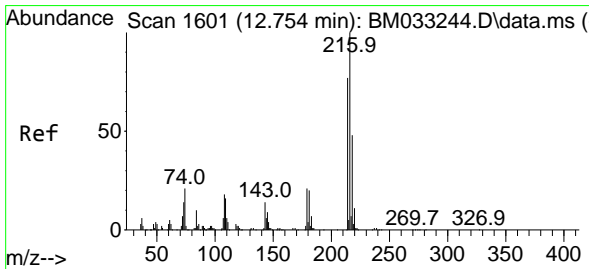
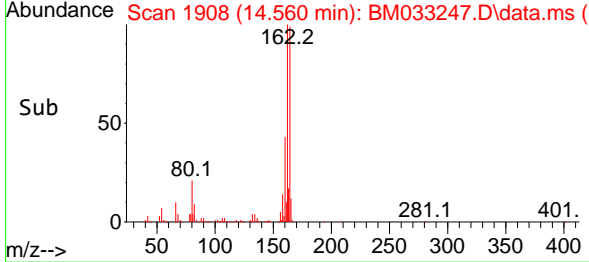
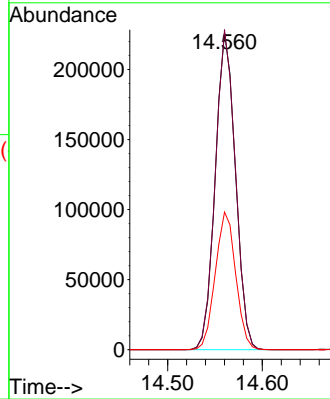
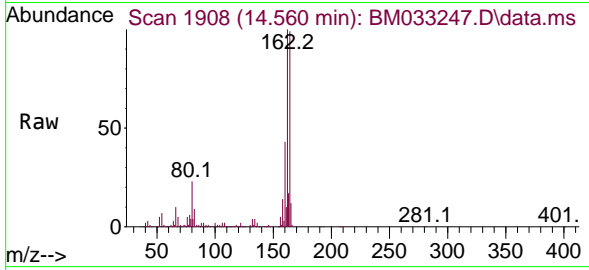




#39
 Acenaphthene-d10
 Concen: 20.000 ng
 RT: 14.560 min Scan# 1908
 Delta R.T. 0.000 min
 Lab File: BM033247.D
 Acq: 24 Nov 2021 14:01

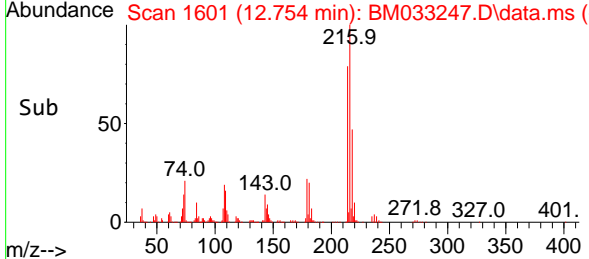
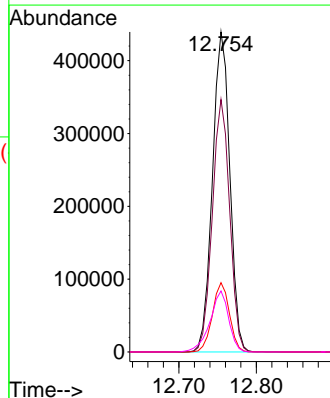
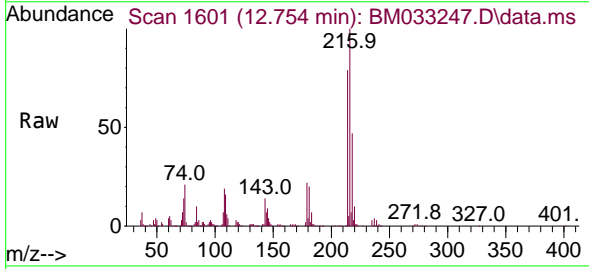
Instrument : BNA_M
 ClientSampleId : BM033247.D
 SSTDICC080

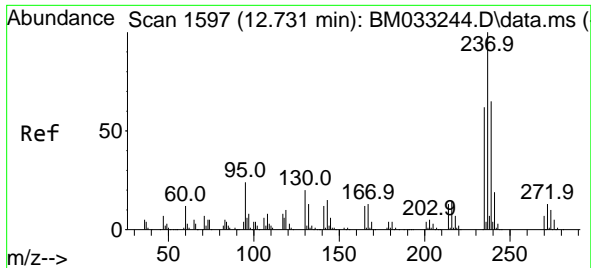
Tgt Ion	Resp	Ion Ratio	Lower	Upper
164	335397	100		
162	101.0	80.6	121.0	
160	43.4	35.1	52.7	



#40
 1,2,4,5-Tetrachlorobenzene
 Concen: 73.941 ng
 RT: 12.754 min Scan# 1601
 Delta R.T. 0.000 min
 Lab File: BM033247.D
 Acq: 24 Nov 2021 14:01

Tgt Ion	Resp	Ion Ratio	Lower	Upper
216	685599	100		
214	78.8	62.5	93.7	
179	21.2	18.7	28.1	
108	20.6	21.0	31.4	





#41
 Hexachlorocyclopentadiene
 Concen: 81.451 ng
 RT: 12.731 min Scan# 111
 Delta R.T. 0.000 min
 Lab File: BM033247.D
 Acq: 24 Nov 2021 14:01

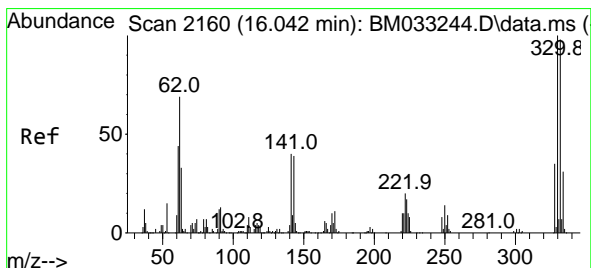
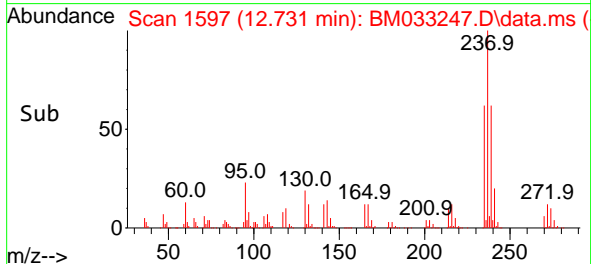
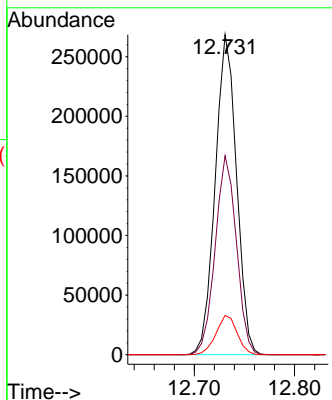
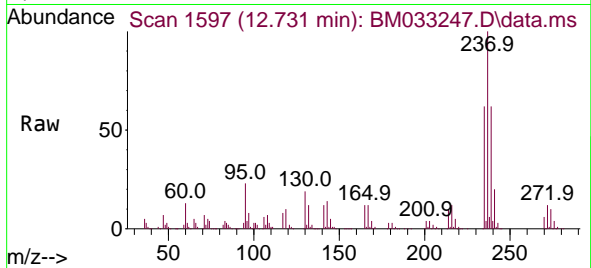
Instrument :

BNA_M

ClientSampleId :

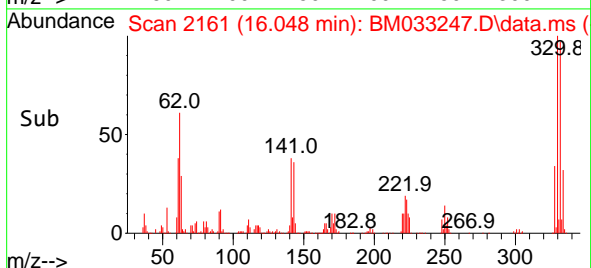
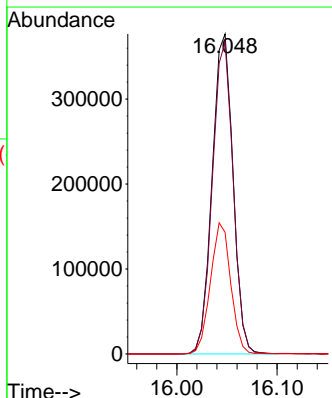
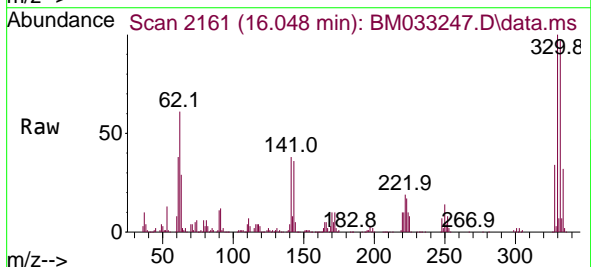
SSTDICC080

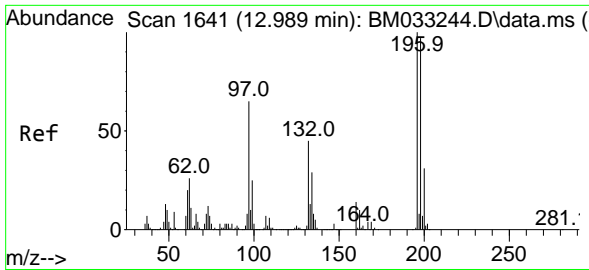
Tgt Ion:237 Resp: 396619
 Ion Ratio Lower Upper
 237 100
 235 62.2 44.4 84.4
 272 12.2 0.0 31.4



#42
 2,4,6-Tribromophenol
 Concen: 144.806 ng
 RT: 16.048 min Scan# 2161
 Delta R.T. 0.006 min
 Lab File: BM033247.D
 Acq: 24 Nov 2021 14:01

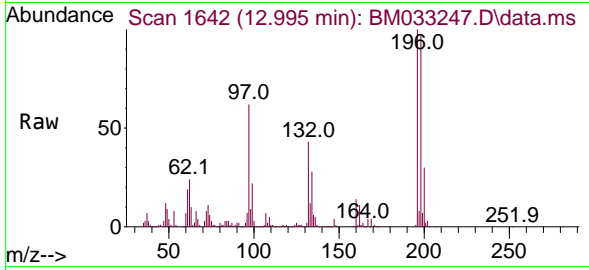
Tgt Ion:330 Resp: 543923
 Ion Ratio Lower Upper
 330 100
 332 97.1 75.7 113.5
 141 40.1 50.7 76.1#



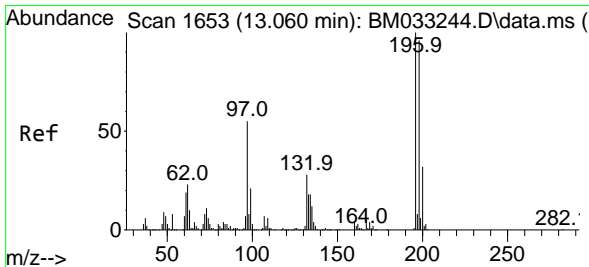
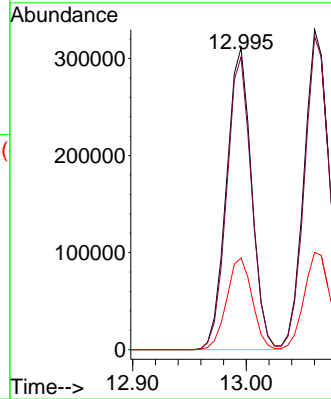
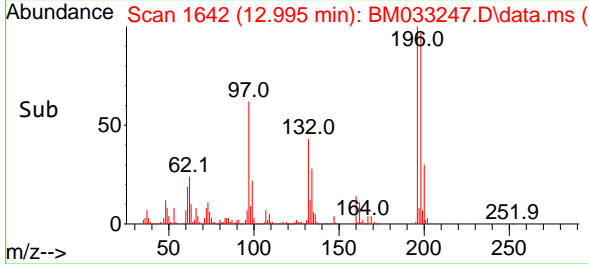


#43
 2,4,6-Trichlorophenol
 Concen: 73.644 ng
 RT: 12.995 min Scan# 1642
 Delta R.T. 0.006 min
 Lab File: BM033247.D
 Acq: 24 Nov 2021 14:01

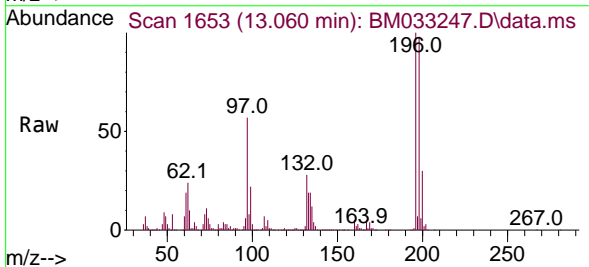
Instrument :
 BNA_M
 ClientSampleId :
 SSTDICC080



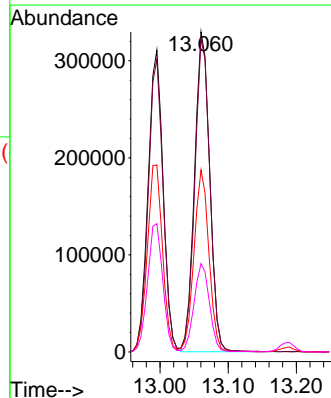
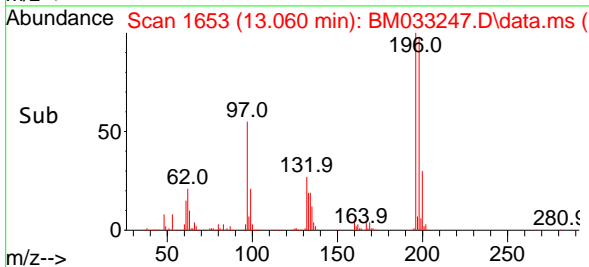
Tgt Ion:196 Resp: 477846
 Ion Ratio Lower Upper
 196 100
 198 97.0 73.6 110.4
 200 30.4 22.1 33.1

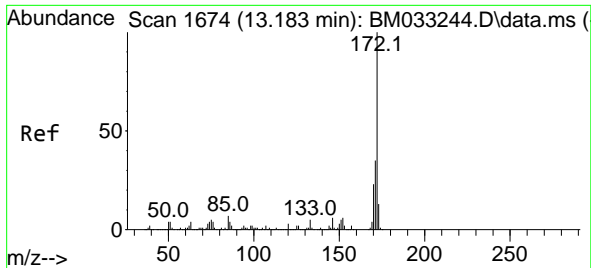


#44
 2,4,5-Trichlorophenol
 Concen: 70.571 ng
 RT: 13.060 min Scan# 1653
 Delta R.T. 0.000 min
 Lab File: BM033247.D
 Acq: 24 Nov 2021 14:01



Tgt Ion:196 Resp: 506044
 Ion Ratio Lower Upper
 196 100
 198 97.9 77.0 115.4
 97 56.8 53.9 80.9
 132 27.6 23.8 35.8

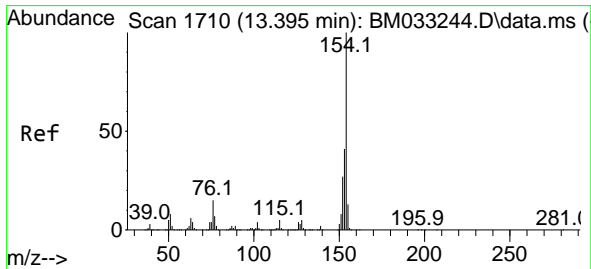
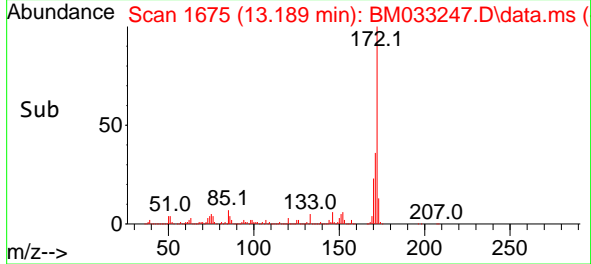
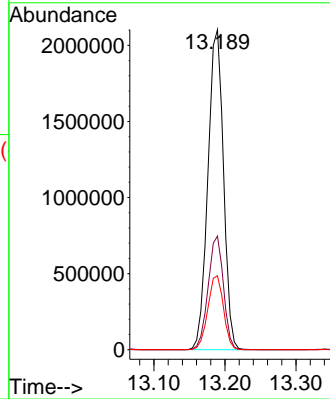
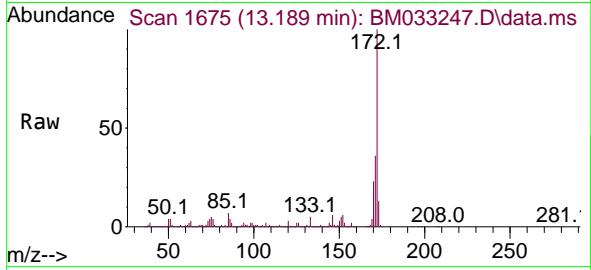




#45
 2-Fluorobiphenyl
 Concen: 148.033 ng
 RT: 13.189 min Scan# 1674
 Delta R.T. 0.006 min
 Lab File: BM033247.D
 Acq: 24 Nov 2021 14:01

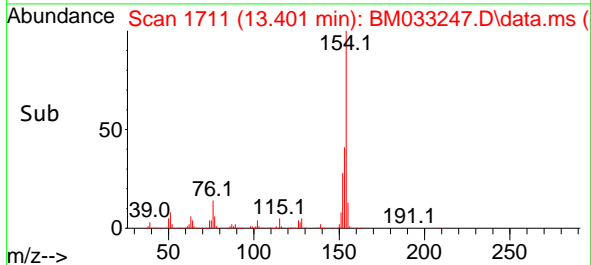
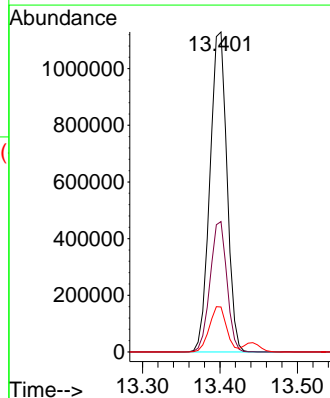
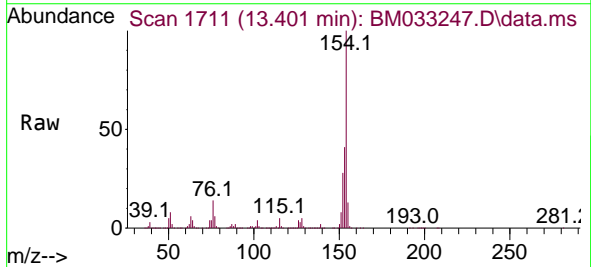
Instrument :
 BNA_M
 ClientSampleId :
 SSTDICC080

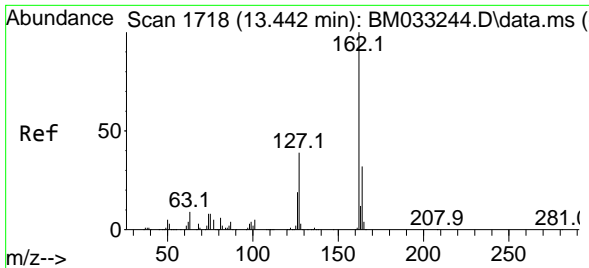
Tgt Ion:172 Resp: 3201171
 Ion Ratio Lower Upper
 172 100
 171 35.5 28.1 42.1
 170 23.1 18.6 27.8



#46
 1,1'-Biphenyl
 Concen: 71.237 ng
 RT: 13.401 min Scan# 1711
 Delta R.T. 0.006 min
 Lab File: BM033247.D
 Acq: 24 Nov 2021 14:01

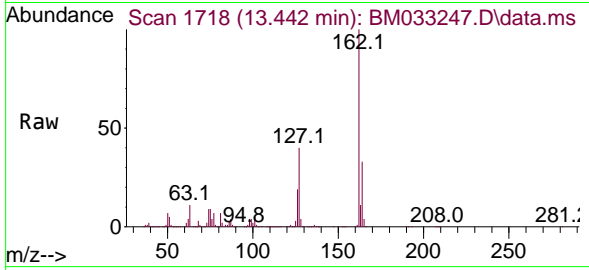
Tgt Ion:154 Resp: 1726595
 Ion Ratio Lower Upper
 154 100
 153 40.8 20.3 60.3
 76 14.1 0.0 33.5



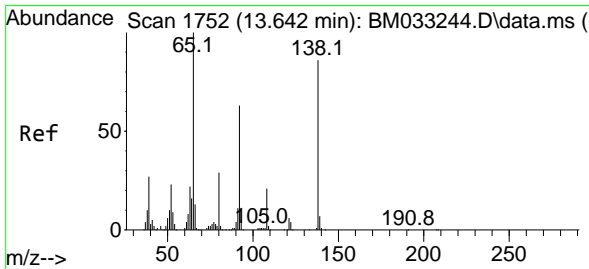
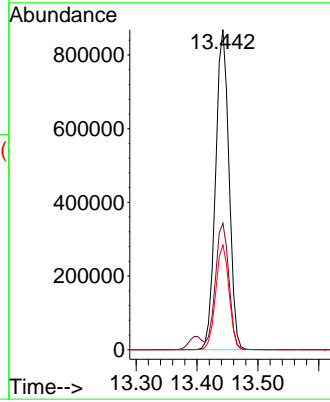
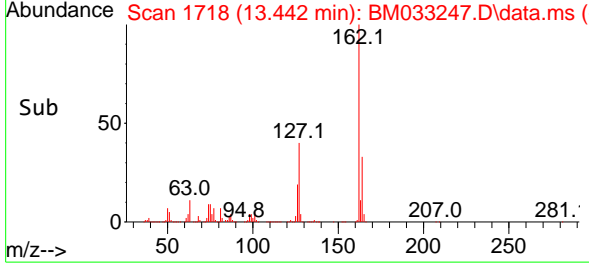


#47
 2-Chloronaphthalene
 Concen: 71.268 ng
 RT: 13.442 min Scan# 1
 Delta R.T. 0.000 min
 Lab File: BM033247.D
 Acq: 24 Nov 2021 14:01

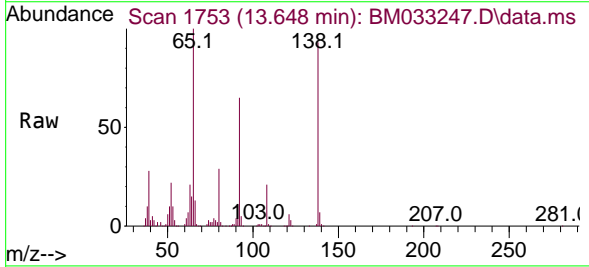
Instrument :
 BNA_M
 ClientSampleId :
 SSTDICC080



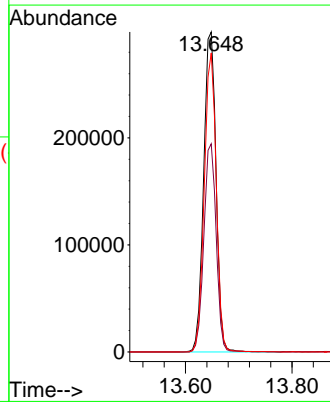
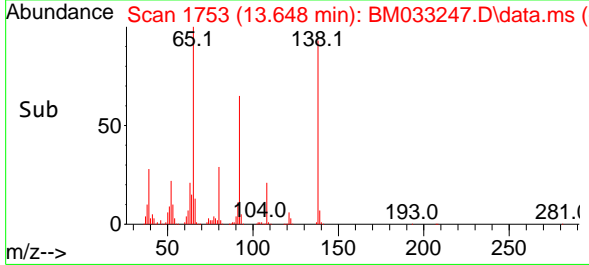
Tgt Ion:162 Resp: 1326137
 Ion Ratio Lower Upper
 162 100
 127 39.5 33.2 49.8
 164 32.8 25.7 38.5

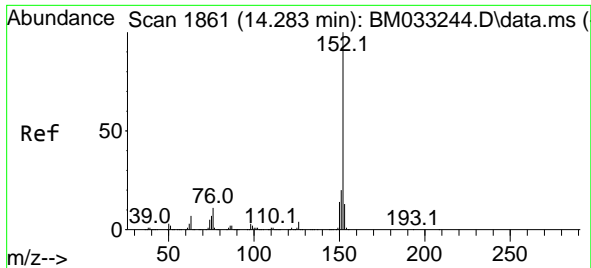


#48
 2-Nitroaniline
 Concen: 88.040 ng
 RT: 13.648 min Scan# 1753
 Delta R.T. 0.006 min
 Lab File: BM033247.D
 Acq: 24 Nov 2021 14:01



Tgt Ion: 65 Resp: 481355
 Ion Ratio Lower Upper
 65 100
 92 65.1 51.2 76.8
 138 93.4 66.8 100.2

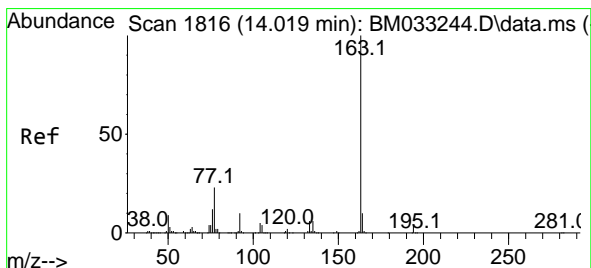
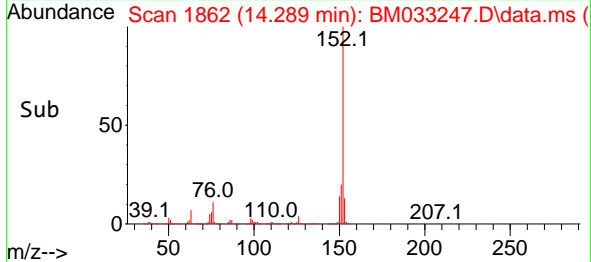
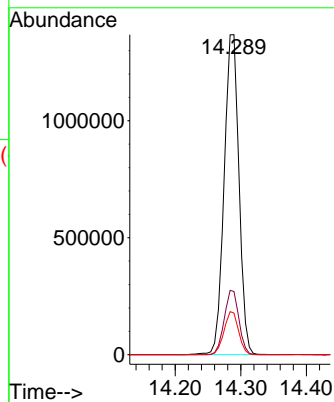
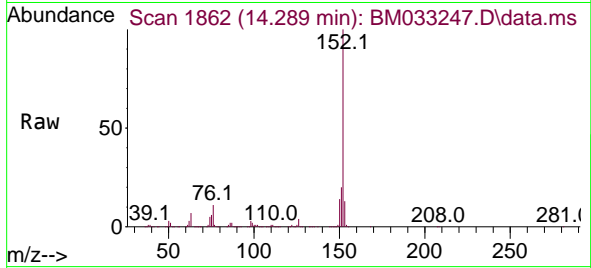




#49
 Acenaphthylene
 Concen: 71.752 ng
 RT: 14.289 min Scan# 1862
 Delta R.T. 0.006 min
 Lab File: BM033247.D
 Acq: 24 Nov 2021 14:01

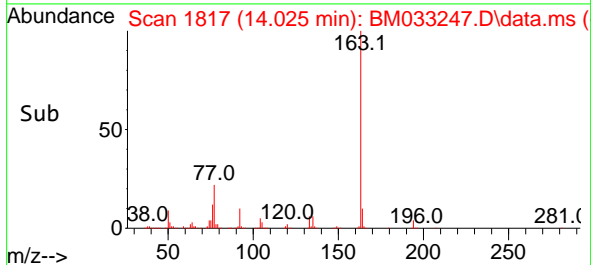
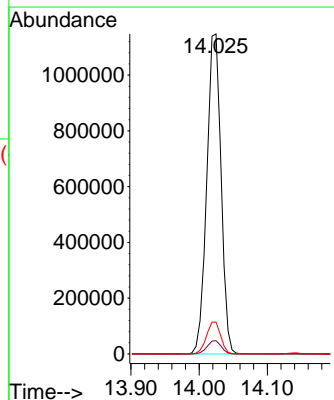
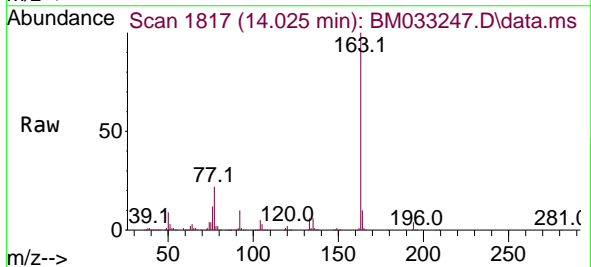
Instrument :
 BNA_M
 ClientSampleId :
 SSTDICC080

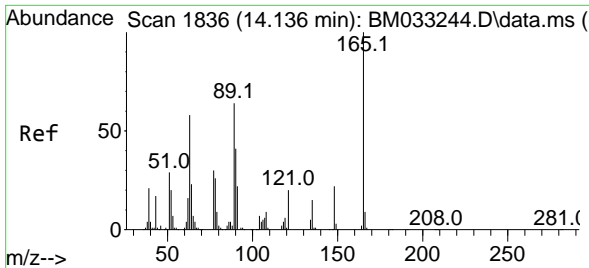
Tgt Ion:152 Resp: 2142158
 Ion Ratio Lower Upper
 152 100
 151 19.8 15.7 23.5
 153 13.0 10.6 15.8



#50
 Dimethylphthalate
 Concen: 68.551 ng
 RT: 14.025 min Scan# 1817
 Delta R.T. 0.006 min
 Lab File: BM033247.D
 Acq: 24 Nov 2021 14:01

Tgt Ion:163 Resp: 1672894
 Ion Ratio Lower Upper
 163 100
 194 4.2 2.9 4.3
 164 9.9 8.0 12.0

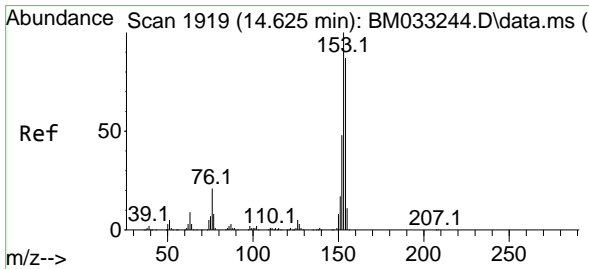
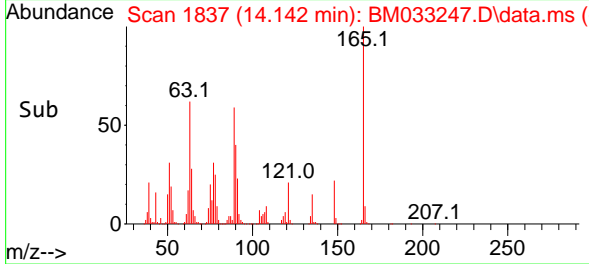
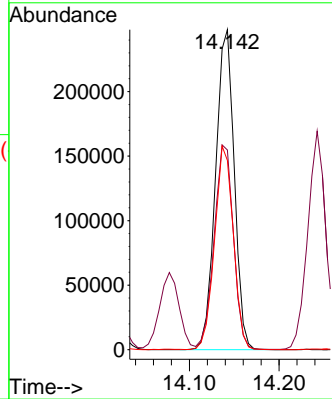
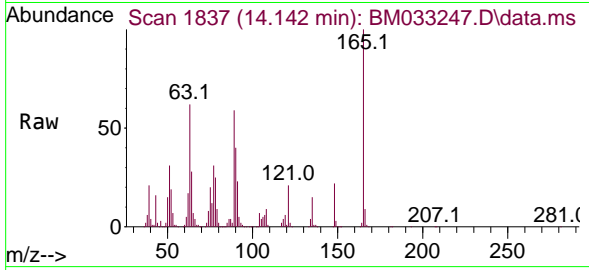




#51
 2,6-Dinitrotoluene
 Concen: 71.746 ng
 RT: 14.142 min Scan# 1837
 Delta R.T. 0.006 min
 Lab File: BM033247.D
 Acq: 24 Nov 2021 14:01

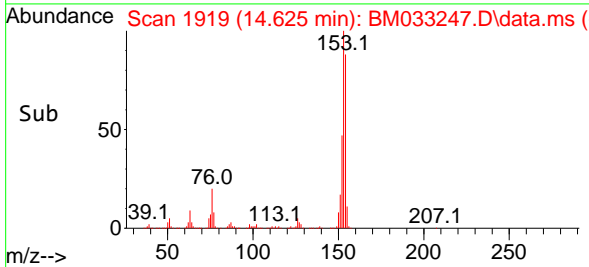
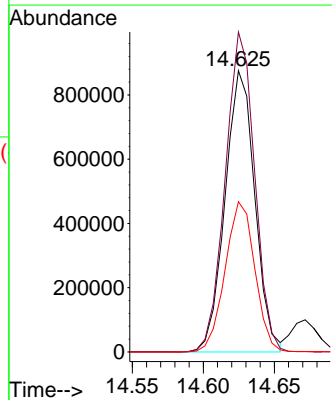
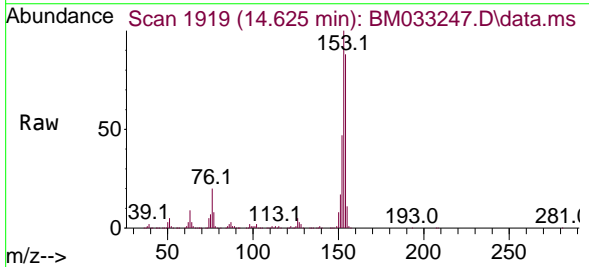
Instrument :
 BNA_M
 ClientSampleId :
 SSTDICC080

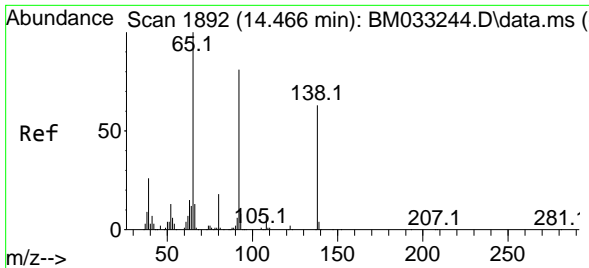
Tgt Ion:165 Resp: 357866
 Ion Ratio Lower Upper
 165 100
 63 62.4 72.4 108.6#
 89 59.2 69.3 103.9#



#52
 Acenaphthene
 Concen: 71.933 ng
 RT: 14.625 min Scan# 1919
 Delta R.T. 0.000 min
 Lab File: BM033247.D
 Acq: 24 Nov 2021 14:01

Tgt Ion:154 Resp: 1279261
 Ion Ratio Lower Upper
 154 100
 153 113.8 92.4 138.6
 152 53.4 43.7 65.5

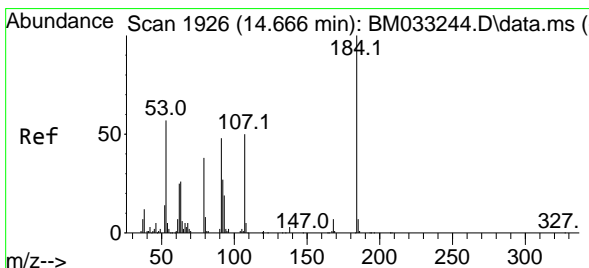
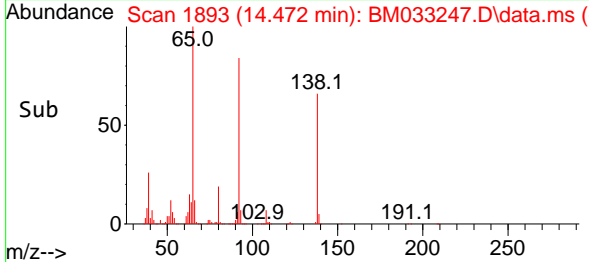
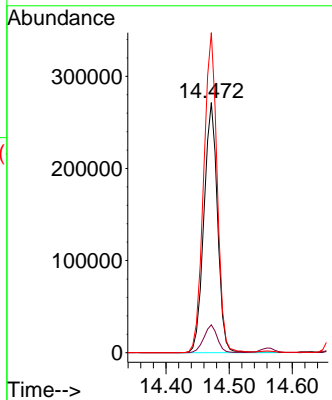
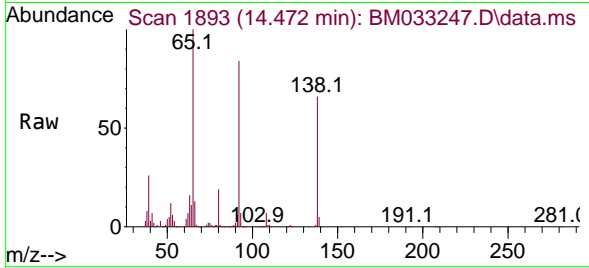




#53
 3-Nitroaniline
 Concen: 74.661 ng
 RT: 14.472 min Scan# 1893
 Delta R.T. 0.006 min
 Lab File: BM033247.D
 Acq: 24 Nov 2021 14:01

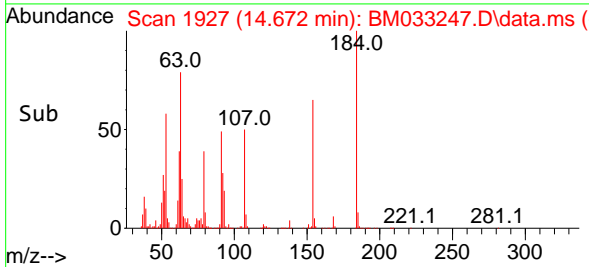
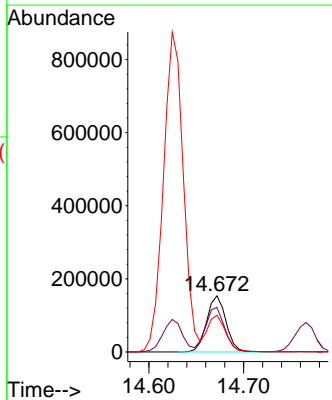
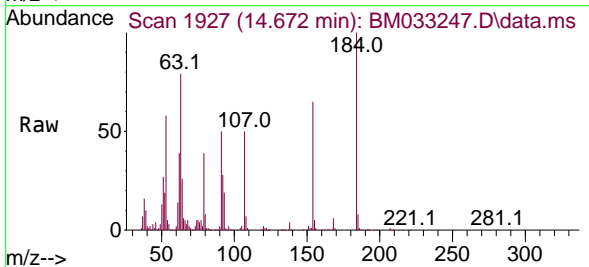
Instrument :
 BNA_M
 ClientSampleId :
 SSTDICC080

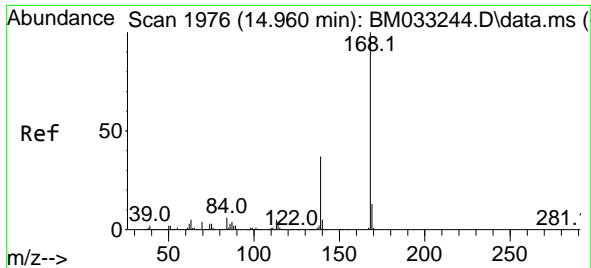
Tgt Ion:138 Resp: 405294
 Ion Ratio Lower Upper
 138 100
 108 11.1 8.3 12.5
 92 127.9 105.2 157.8



#54
 2,4-Dinitrophenol
 Concen: 72.210 ng
 RT: 14.672 min Scan# 1927
 Delta R.T. 0.006 min
 Lab File: BM033247.D
 Acq: 24 Nov 2021 14:01

Tgt Ion:184 Resp: 217347
 Ion Ratio Lower Upper
 184 100
 63 79.3 93.8 140.6#
 154 65.1 64.0 96.0

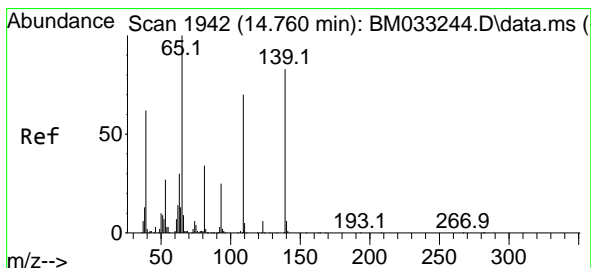
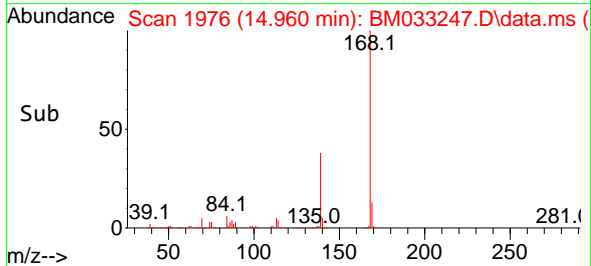
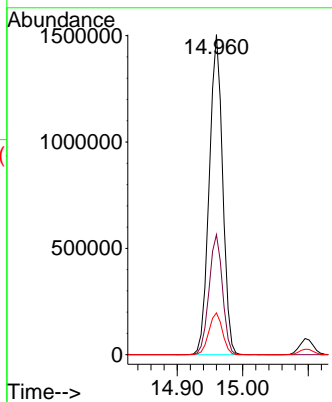
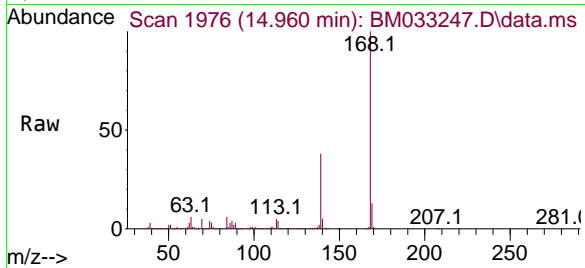




#55
 Dibenzofuran
 Concen: 71.517 ng
 RT: 14.960 min Scan# 1976
 Delta R.T. 0.000 min
 Lab File: BM033247.D
 Acq: 24 Nov 2021 14:01

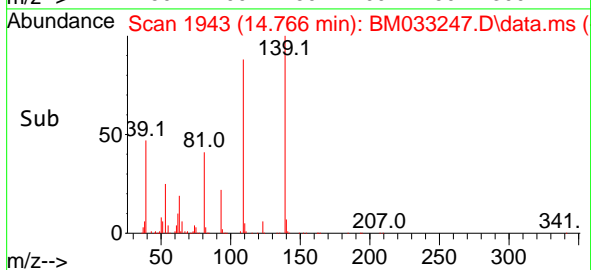
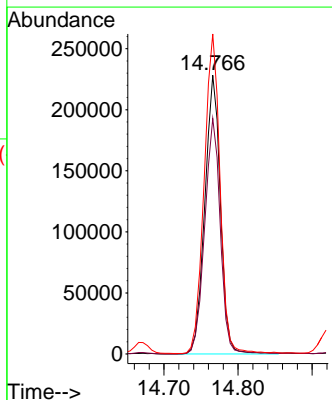
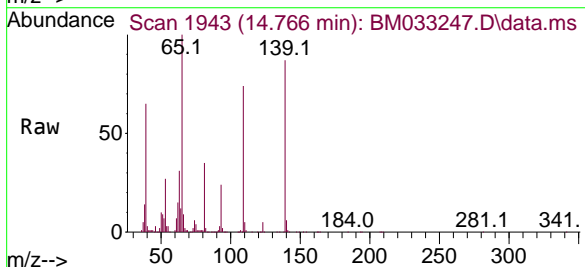
Instrument :
 BNA_M
 ClientSampleId :
 SSTDICC080

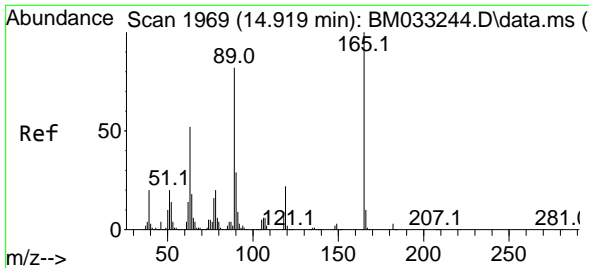
Tgt Ion:168 Resp: 2135176
 Ion Ratio Lower Upper
 168 100
 139 37.5 35.0 52.4
 169 13.1 10.8 16.2



#56
 4-Nitrophenol
 Concen: 75.668 ng
 RT: 14.766 min Scan# 1943
 Delta R.T. 0.006 min
 Lab File: BM033247.D
 Acq: 24 Nov 2021 14:01

Tgt Ion:139 Resp: 334705
 Ion Ratio Lower Upper
 139 100
 109 84.5 92.3 132.3#
 65 114.8 110.5 150.5

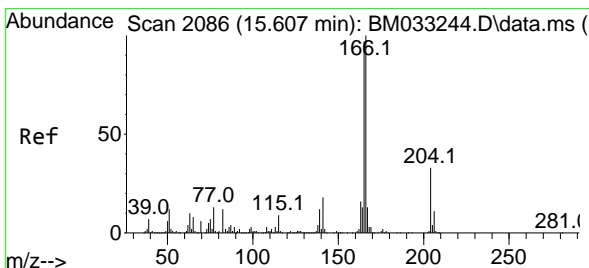
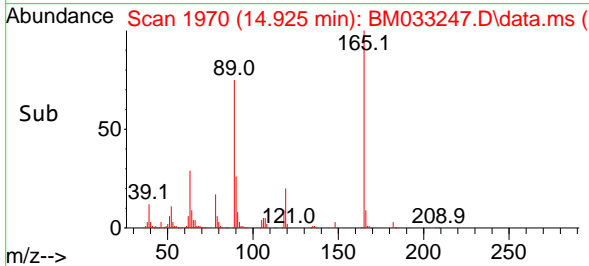
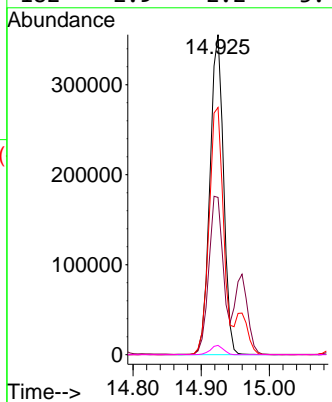
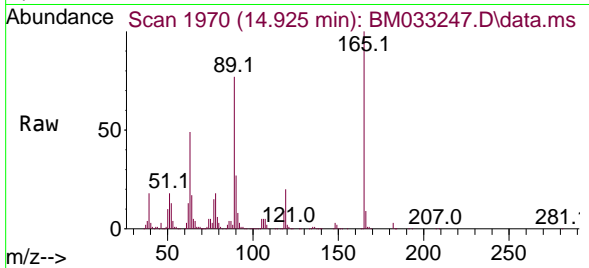




#57
 2,4-Dinitrotoluene
 Concen: 73.106 ng
 RT: 14.925 min Scan# 1969
 Delta R.T. 0.006 min
 Lab File: BM033247.D
 Acq: 24 Nov 2021 14:01

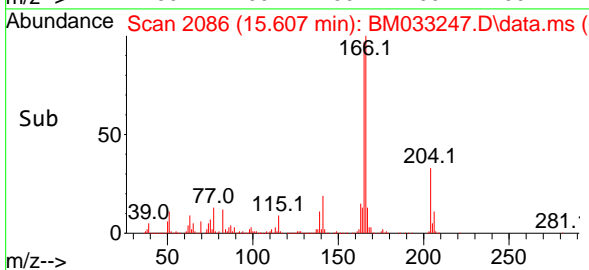
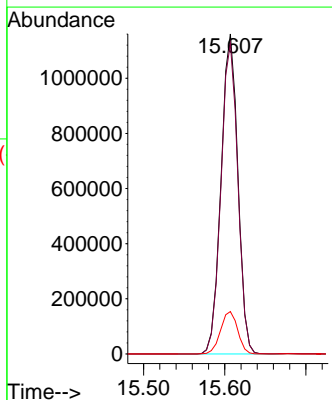
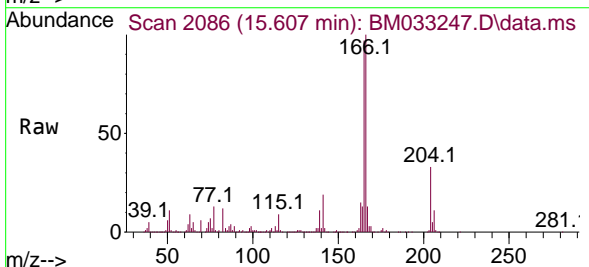
Instrument :
 BNA_M
 ClientSampleId :
 SSTDICC080

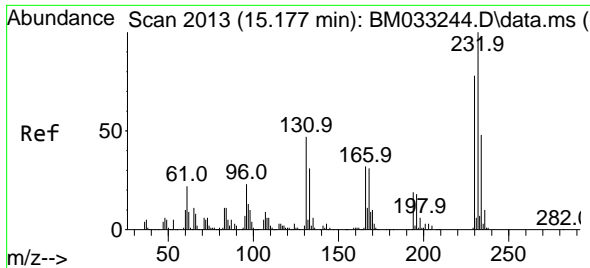
Tgt Ion:165 Resp: 493963
 Ion Ratio Lower Upper
 165 100
 63 49.2 70.3 105.5#
 89 77.2 83.1 124.7#
 182 2.9 2.2 3.4



#58
 Fluorene
 Concen: 74.720 ng
 RT: 15.607 min Scan# 2086
 Delta R.T. 0.000 min
 Lab File: BM033247.D
 Acq: 24 Nov 2021 14:01

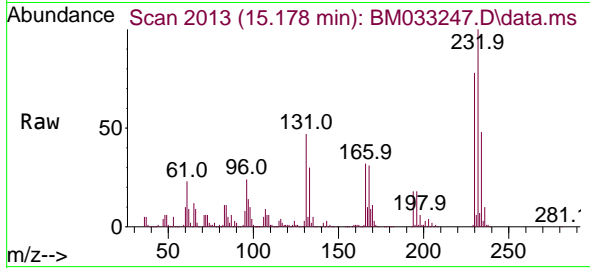
Tgt Ion:166 Resp: 1672424
 Ion Ratio Lower Upper
 166 100
 165 97.0 79.3 118.9
 167 13.2 10.6 16.0



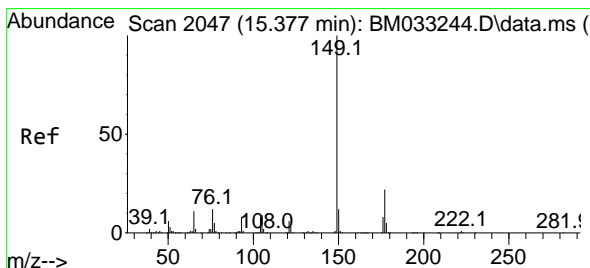
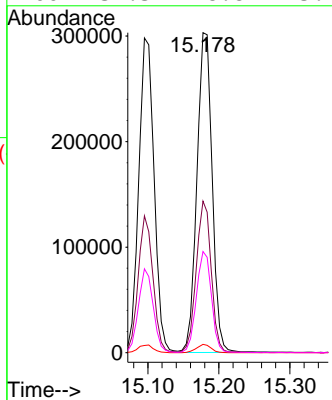
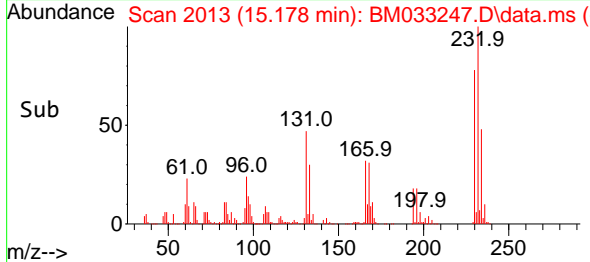


#59
 2,3,4,6-Tetrachlorophenol
 Concen: 70.541 ng
 RT: 15.178 min Scan# 2013
 Delta R.T. 0.000 min
 Lab File: BM033247.D
 Acq: 24 Nov 2021 14:01

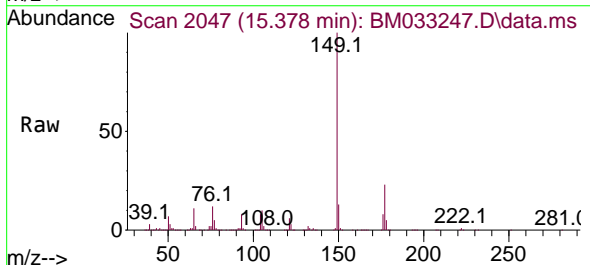
Instrument :
 BNA_M
 ClientSampleId :
 SSTDICC080



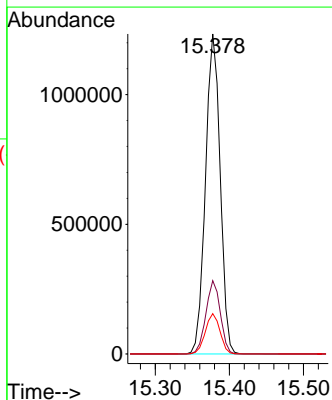
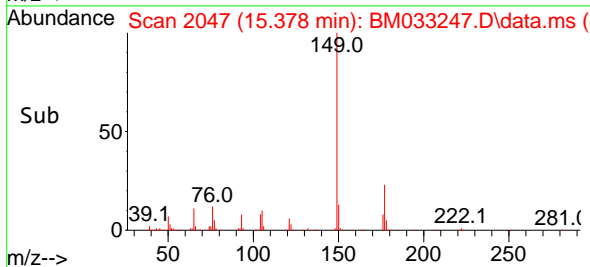
Tgt Ion:232 Resp: 453456
 Ion Ratio Lower Upper
 232 100
 131 46.3 50.6 75.8#
 130 2.5 3.0 4.4#
 166 31.3 28.8 43.2

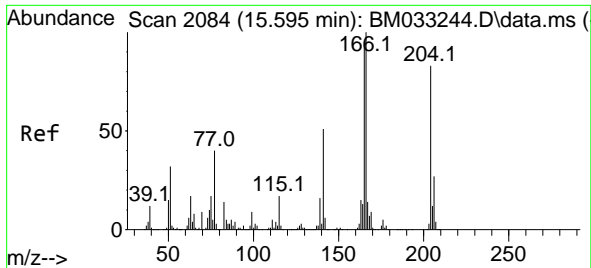


#60
 Diethylphthalate
 Concen: 69.386 ng
 RT: 15.378 min Scan# 2047
 Delta R.T. 0.000 min
 Lab File: BM033247.D
 Acq: 24 Nov 2021 14:01



Tgt Ion:149 Resp: 1697392
 Ion Ratio Lower Upper
 149 100
 177 22.9 15.7 23.5
 150 12.6 9.6 14.4



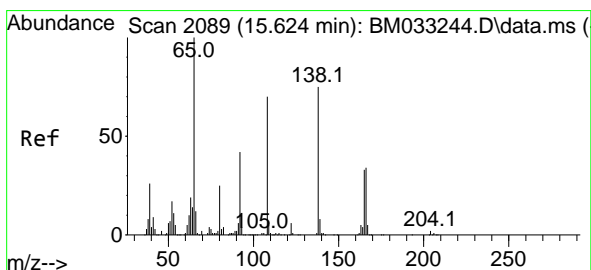
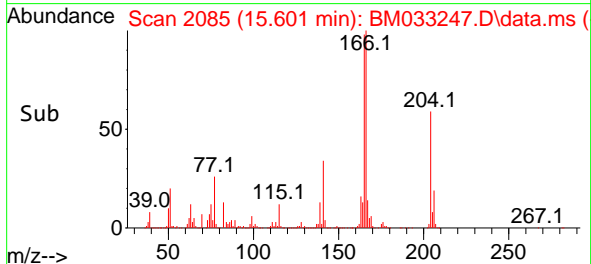
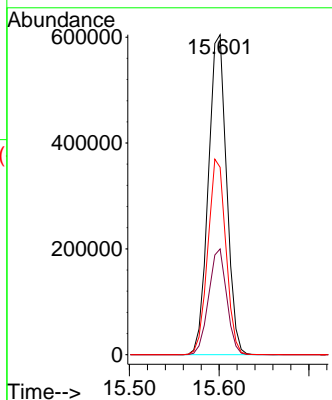
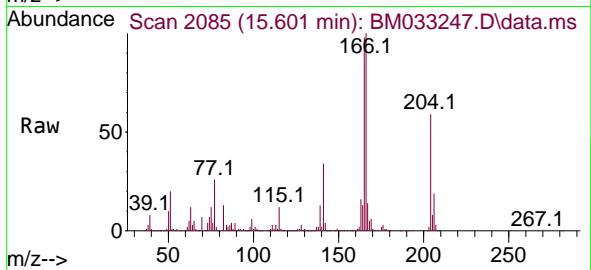


#61
 4-Chlorophenyl-phenylether
 Concen: 72.009 ng
 RT: 15.601 min Scan# 2085
 Delta R.T. 0.006 min
 Lab File: BM033247.D
 Acq: 24 Nov 2021 14:01

Instrument :
 BNA_M
 ClientSampleId :
 SSTDICC080

Tgt Ion:204 Resp: 852145

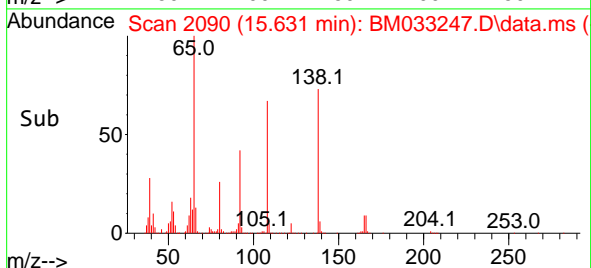
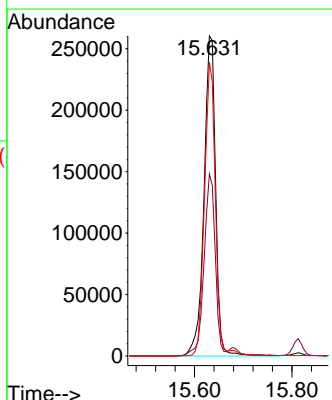
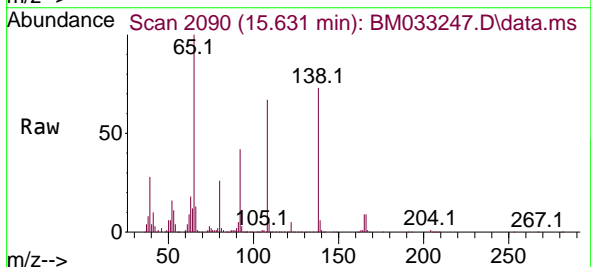
Ion	Ratio	Lower	Upper
204	100		
206	33.0	26.7	40.1
141	58.5	55.8	83.8

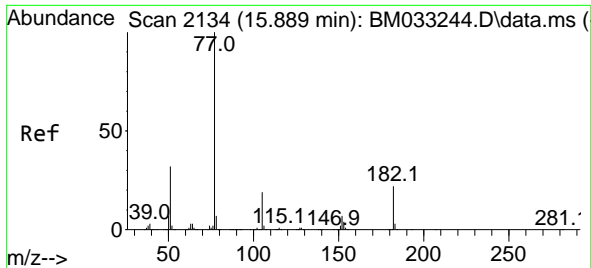


#62
 4-Nitroaniline
 Concen: 75.638 ng
 RT: 15.631 min Scan# 2090
 Delta R.T. 0.006 min
 Lab File: BM033247.D
 Acq: 24 Nov 2021 14:01

Tgt Ion:138 Resp: 431614

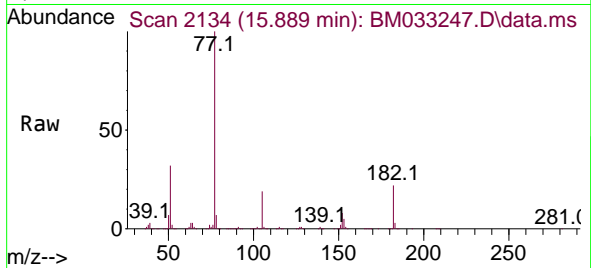
Ion	Ratio	Lower	Upper
138	100		
92	56.9	40.6	80.6
108	91.8	103.8	143.8#





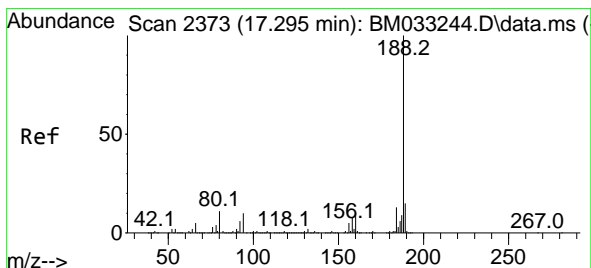
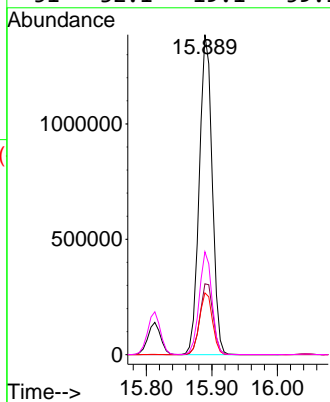
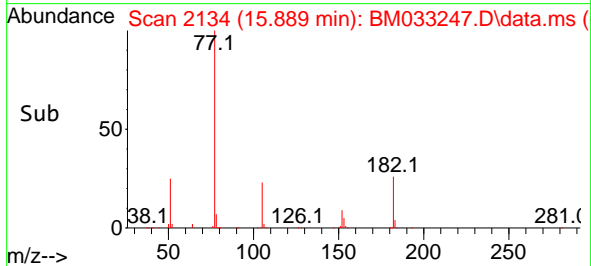
#63
 Azobenzene
 Concen: 81.226 ng
 RT: 15.889 min Scan# 2134
 Delta R.T. 0.000 min
 Lab File: BM033247.D
 Acq: 24 Nov 2021 14:01

Instrument :
 BNA_M
 ClientSampleId :
 SSTDICC080

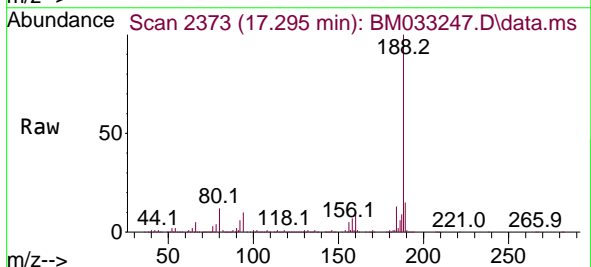


Tgt Ion: 77 Resp: 1901134

Ion	Ratio	Lower	Upper
77	100		
182	22.2	0.0	39.3
105	19.3	0.0	36.1
51	32.1	19.1	59.1

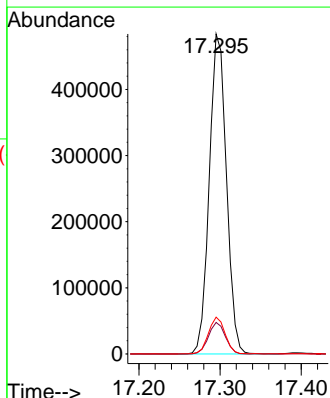
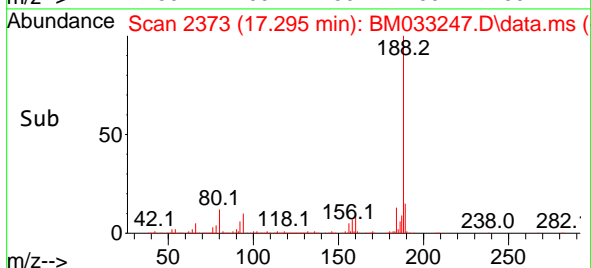


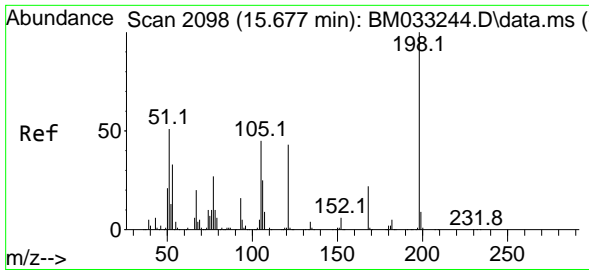
#64
 Phenanthrene-d10
 Concen: 20.000 ng
 RT: 17.295 min Scan# 2373
 Delta R.T. 0.000 min
 Lab File: BM033247.D
 Acq: 24 Nov 2021 14:01



Tgt Ion: 188 Resp: 710020

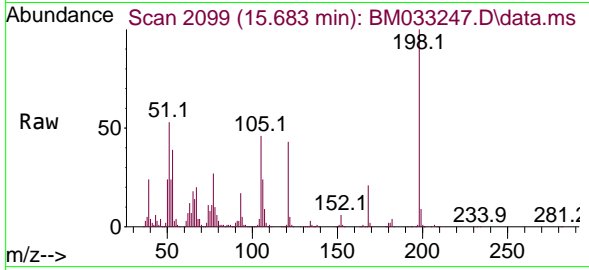
Ion	Ratio	Lower	Upper
188	100		
94	9.8	6.3	9.5#
80	11.5	7.3	10.9#



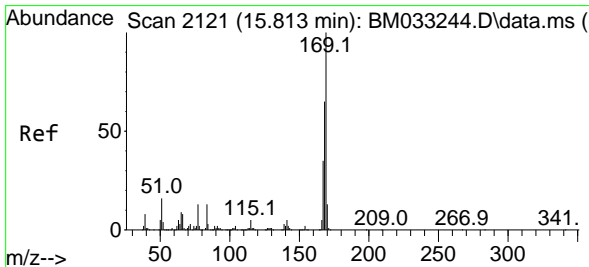
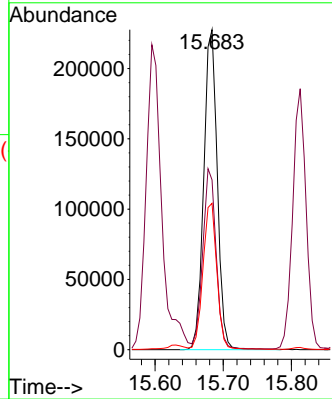
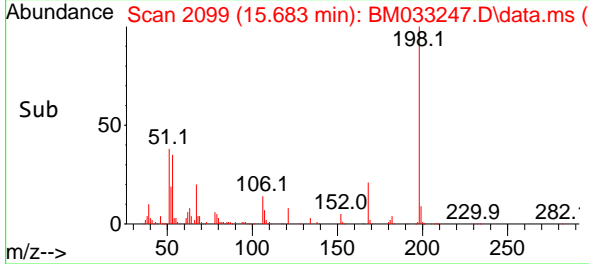


#65
 4,6-Dinitro-2-methylphenol
 Concen: 70.124 ng
 RT: 15.683 min Scan# 2099
 Delta R.T. 0.006 min
 Lab File: BM033247.D
 Acq: 24 Nov 2021 14:01

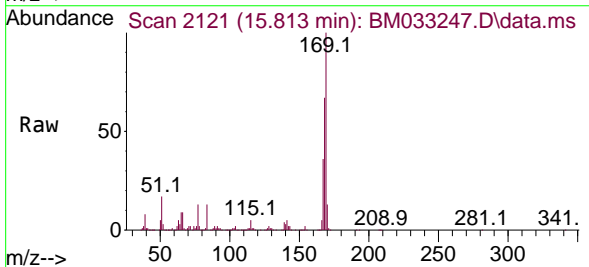
Instrument :
 BNA_M
 ClientSampleId :
 SSTDICC080



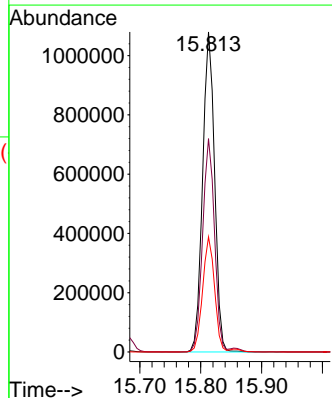
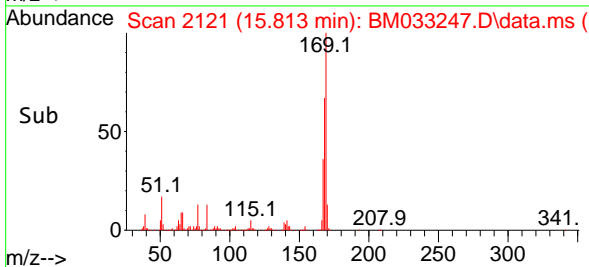
Tgt Ion:198 Resp: 313859
 Ion Ratio Lower Upper
 198 100
 51 53.1 49.7 89.7
 105 45.8 34.9 74.9

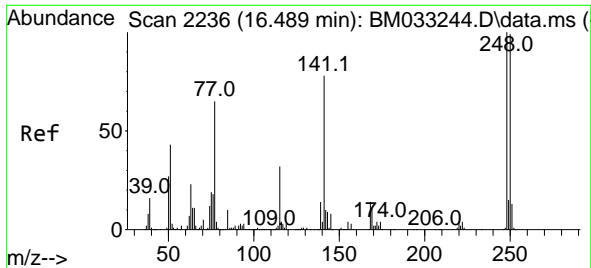


#66
 n-Nitrosodiphenylamine
 Concen: 70.573 ng
 RT: 15.813 min Scan# 2121
 Delta R.T. 0.000 min
 Lab File: BM033247.D
 Acq: 24 Nov 2021 14:01



Tgt Ion:169 Resp: 1468946
 Ion Ratio Lower Upper
 169 100
 168 66.6 55.0 82.4
 167 35.9 29.8 44.8

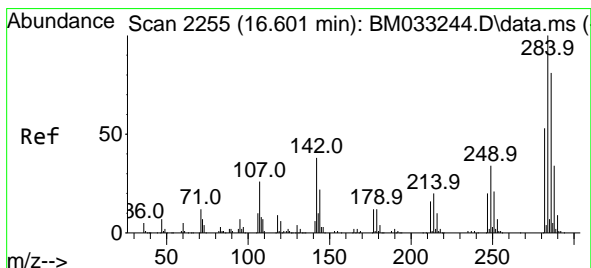
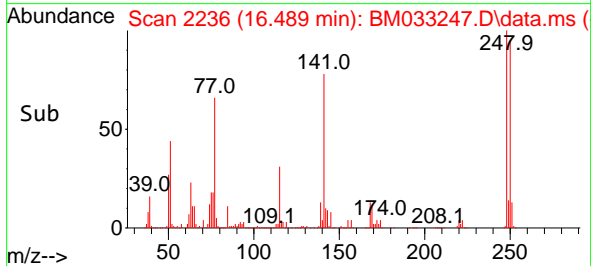
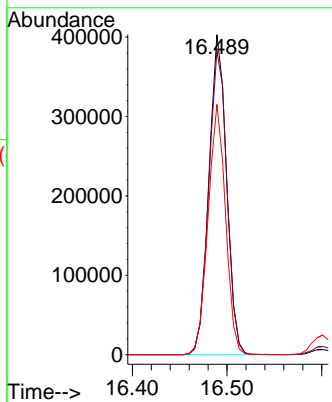
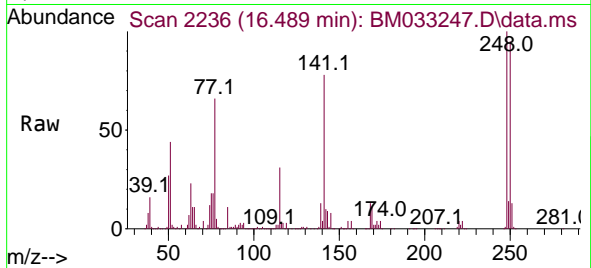




#67
 4-Bromophenyl-phenylether
 Concen: 71.475 ng
 RT: 16.489 min Scan# 21
 Delta R.T. 0.000 min
 Lab File: BM033247.D
 Acq: 24 Nov 2021 14:01

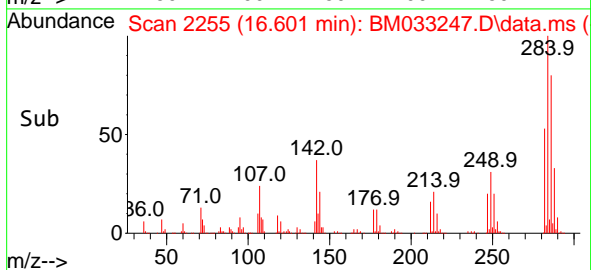
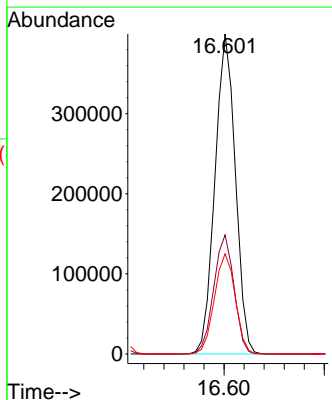
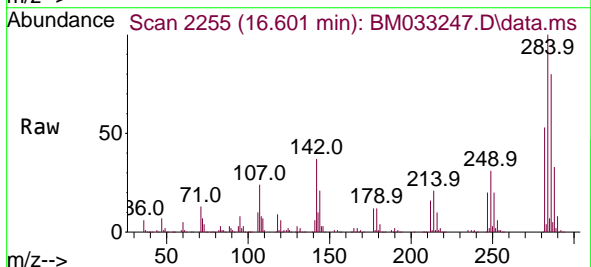
Instrument :
 BNA_M
 ClientSampleId :
 SSTDICC080

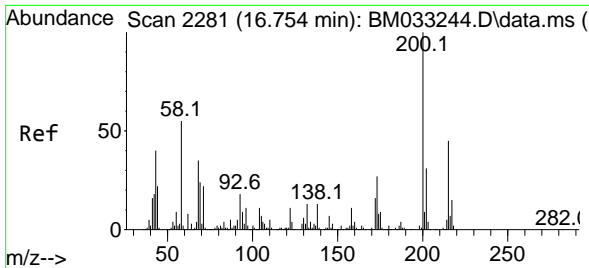
Tgt Ion:248 Resp: 521541
 Ion Ratio Lower Upper
 248 100
 250 94.9 77.4 116.2
 141 78.2 74.1 111.1



#68
 Hexachlorobenzene
 Concen: 70.358 ng
 RT: 16.601 min Scan# 2255
 Delta R.T. 0.000 min
 Lab File: BM033247.D
 Acq: 24 Nov 2021 14:01

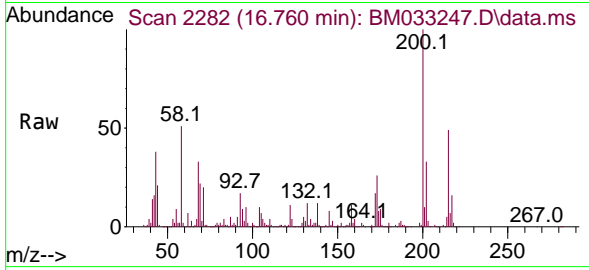
Tgt Ion:284 Resp: 562696
 Ion Ratio Lower Upper
 284 100
 142 37.2 43.0 64.6#
 249 31.3 27.6 41.4



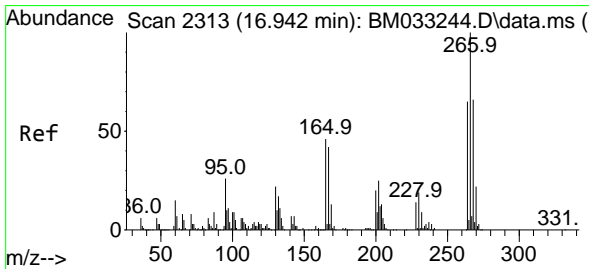
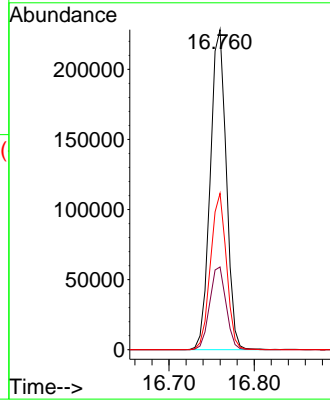
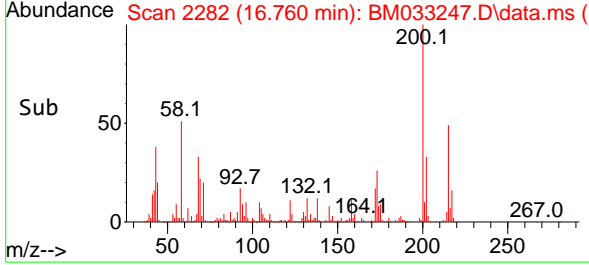


#69
 Atrazine
 Concen: 42.770 ng
 RT: 16.760 min Scan# 21
 Delta R.T. 0.006 min
 Lab File: BM033247.D
 Acq: 24 Nov 2021 14:01

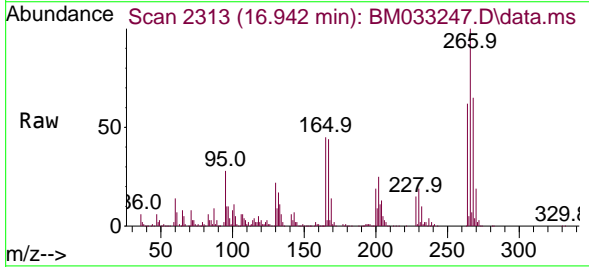
Instrument :
 BNA_M
 ClientSampleId :
 SSTDICC080



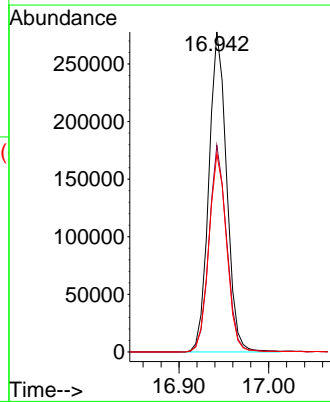
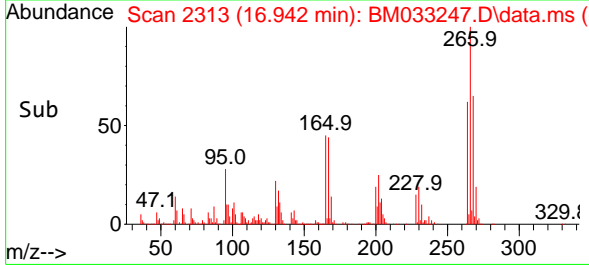
Tgt Ion:200 Resp: 298876
 Ion Ratio Lower Upper
 200 100
 173 25.9 5.8 45.8
 215 48.8 23.6 63.6

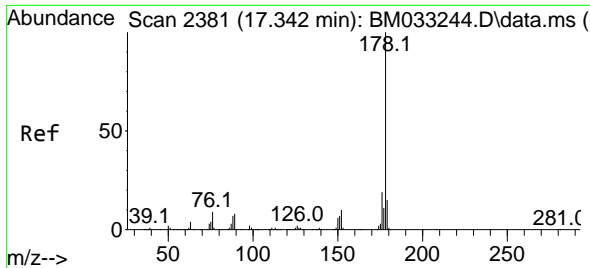


#70
 Pentachlorophenol
 Concen: 76.368 ng
 RT: 16.942 min Scan# 2313
 Delta R.T. 0.000 min
 Lab File: BM033247.D
 Acq: 24 Nov 2021 14:01



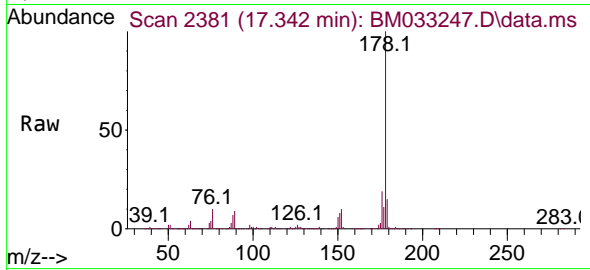
Tgt Ion:266 Resp: 382198
 Ion Ratio Lower Upper
 266 100
 268 64.5 50.3 75.5
 264 61.8 52.1 78.1



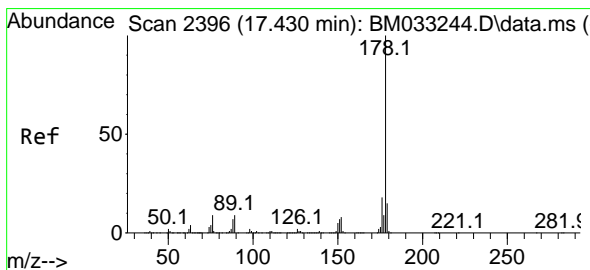
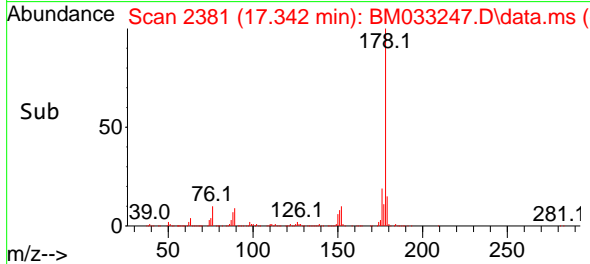
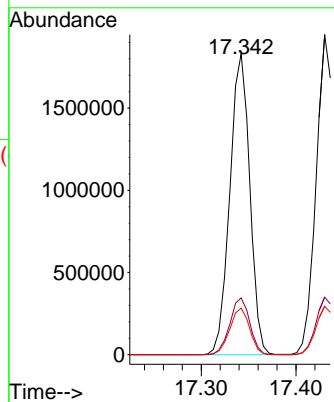


#71
 Phenanthrene
 Concen: 71.038 ng
 RT: 17.342 min Scan# 21
 Delta R.T. 0.000 min
 Lab File: BM033247.D
 Acq: 24 Nov 2021 14:01

Instrument :
 BNA_M
 ClientSampleId :
 SSTDICC080

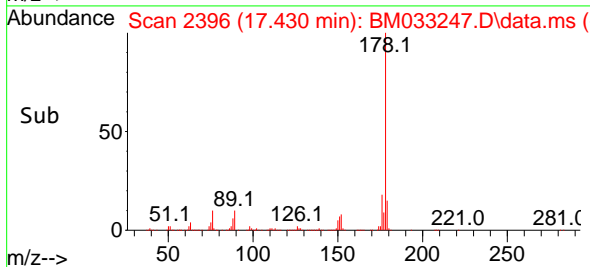
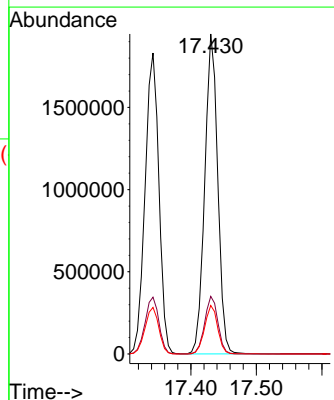
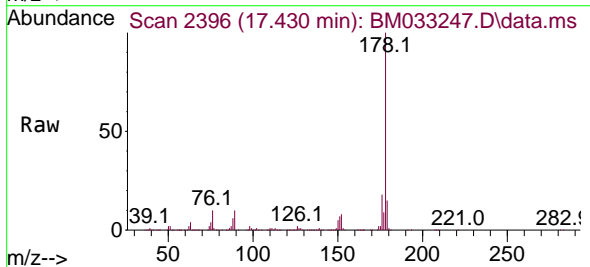


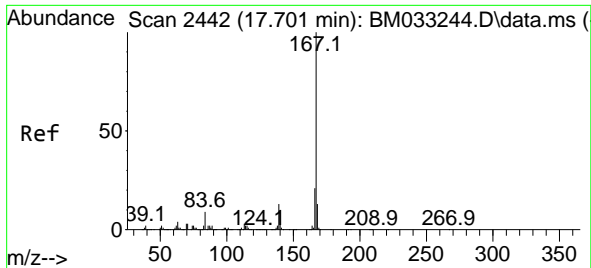
Tgt Ion:178 Resp: 2674459
 Ion Ratio Lower Upper
 178 100
 176 18.9 15.6 23.4
 179 15.5 12.4 18.6



#72
 Anthracene
 Concen: 72.300 ng
 RT: 17.430 min Scan# 2396
 Delta R.T. 0.000 min
 Lab File: BM033247.D
 Acq: 24 Nov 2021 14:01

Tgt Ion:178 Resp: 2686611
 Ion Ratio Lower Upper
 178 100
 176 18.0 14.8 22.2
 179 15.1 12.3 18.5



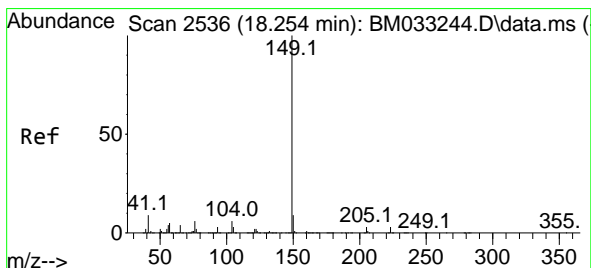
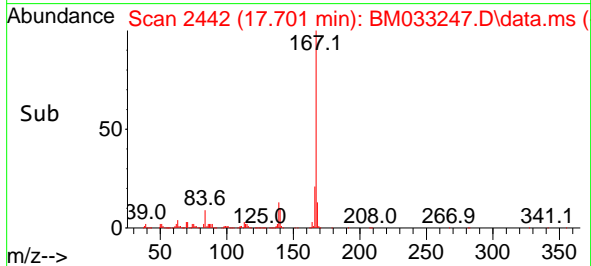
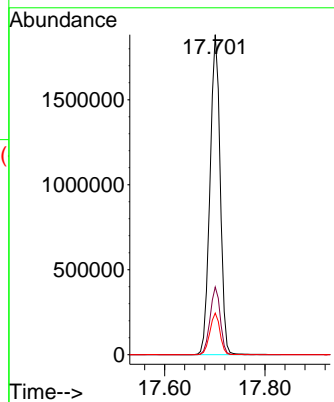
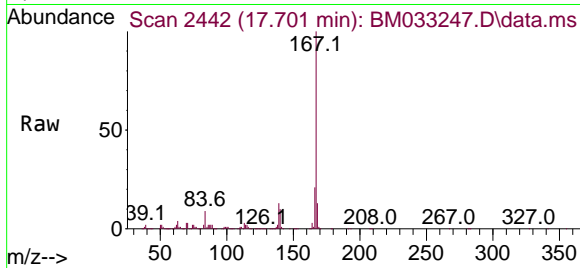


#73
 Carbazole
 Concen: 71.822 ng
 RT: 17.701 min Scan# 2442
 Delta R.T. 0.000 min
 Lab File: BM033247.D
 Acq: 24 Nov 2021 14:01

Instrument : BNA_M
 ClientSampleId : BM033247.D
 SSTDICC080

Tgt Ion:167 Resp: 2659547

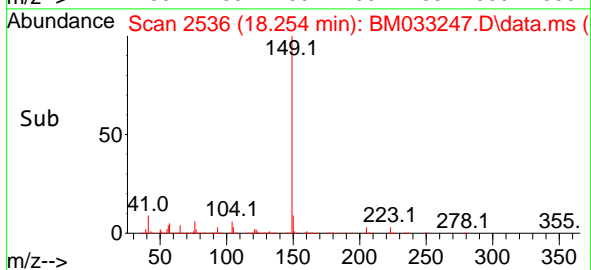
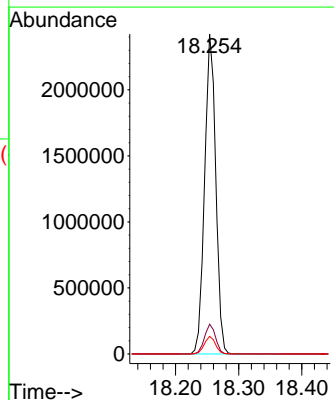
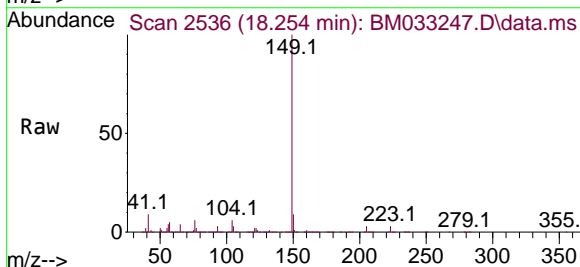
Ion	Ratio	Lower	Upper
167	100		
166	21.1	17.4	26.0
139	13.0	11.9	17.9

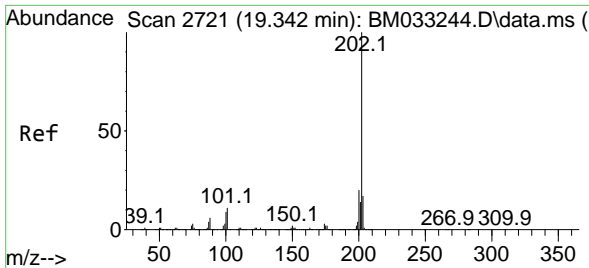


#74
 Di-n-butylphthalate
 Concen: 73.051 ng
 RT: 18.254 min Scan# 2536
 Delta R.T. 0.000 min
 Lab File: BM033247.D
 Acq: 24 Nov 2021 14:01

Tgt Ion:149 Resp: 2966463

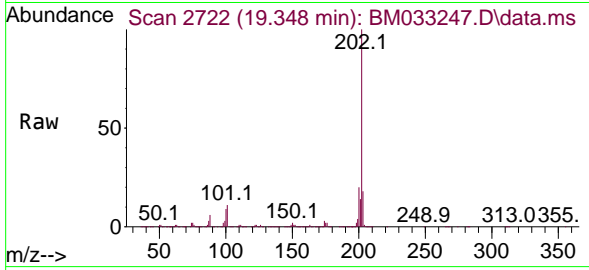
Ion	Ratio	Lower	Upper
149	100		
150	9.3	7.3	10.9
104	5.5	5.6	8.4



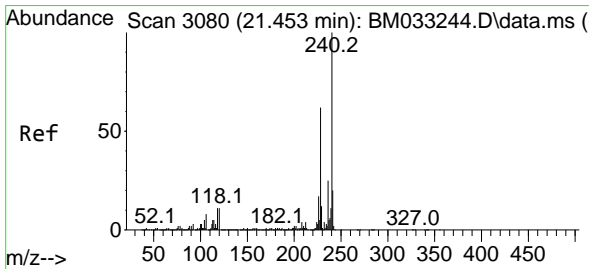
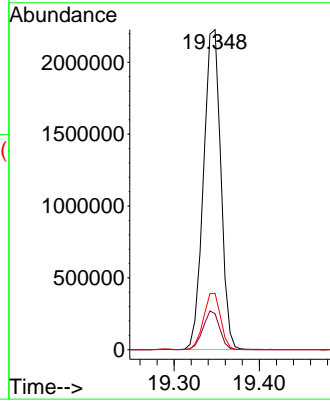
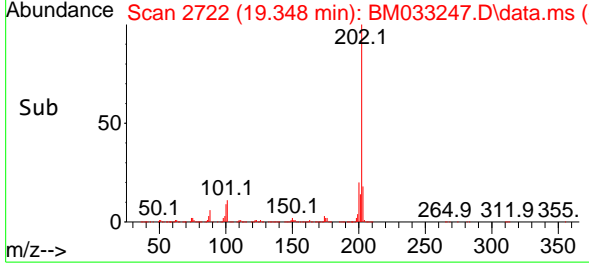


#75
 Fluoranthene
 Concen: 72.539 ng
 RT: 19.348 min Scan# 21
 Delta R.T. 0.006 min
 Lab File: BM033247.D
 Acq: 24 Nov 2021 14:01

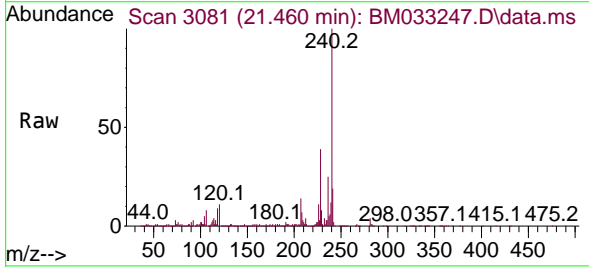
Instrument :
 BNA_M
 ClientSampleId :
 SSTDICC080



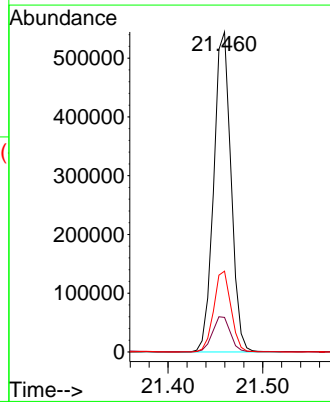
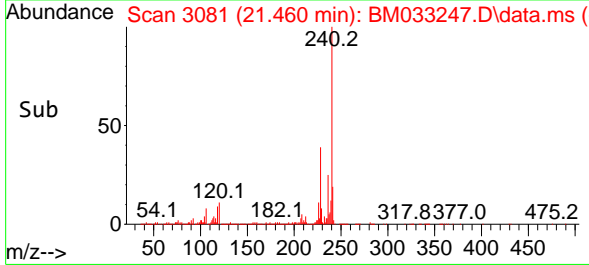
Tgt Ion:202 Resp: 3133254
 Ion Ratio Lower Upper
 202 100
 101 11.3 0.0 29.9
 203 17.6 0.0 36.8

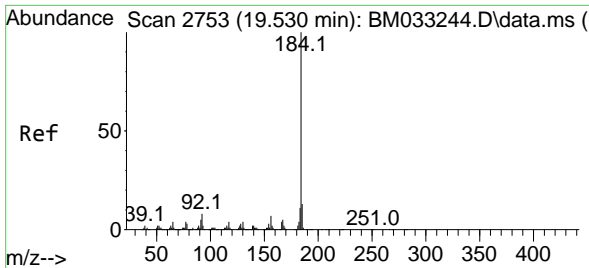


#76
 Chrysene-d12
 Concen: 20.000 ng
 RT: 21.460 min Scan# 3081
 Delta R.T. 0.006 min
 Lab File: BM033247.D
 Acq: 24 Nov 2021 14:01



Tgt Ion:240 Resp: 689559
 Ion Ratio Lower Upper
 240 100
 120 10.8 7.8 11.6
 236 25.2 20.9 31.3



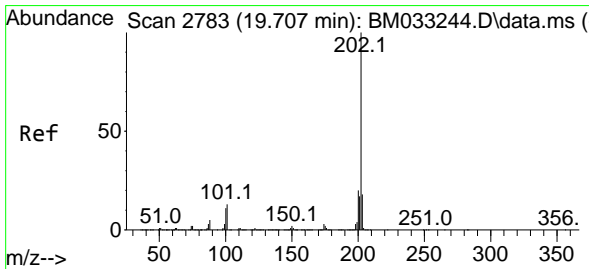
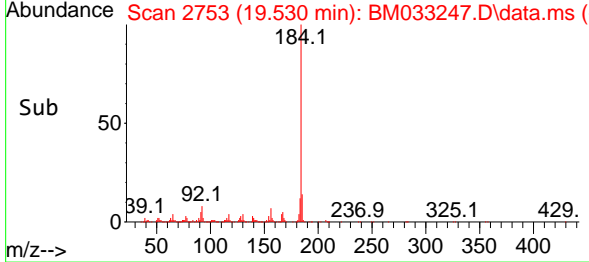
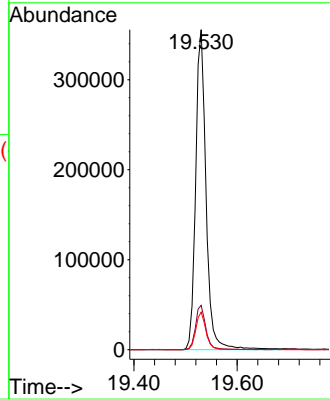
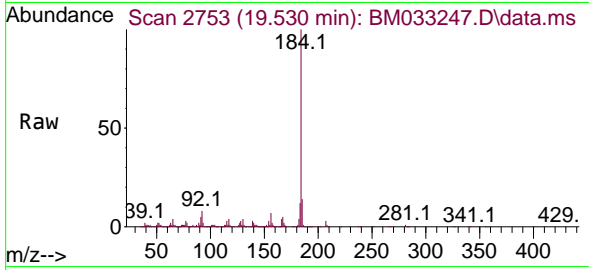


#77
 Benzidine
 Concen: 26.291 ng
 RT: 19.530 min Scan# 2753
 Delta R.T. 0.000 min
 Lab File: BM033247.D
 Acq: 24 Nov 2021 14:01

Instrument : BNA_M
 ClientSampleId : SSTDICC080

Tgt Ion:184 Resp: 496829

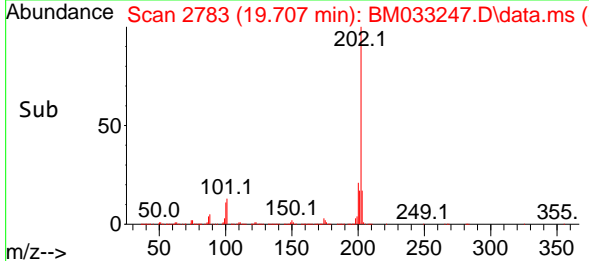
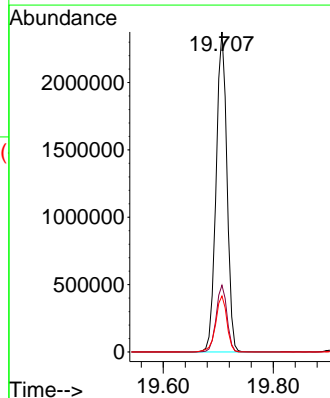
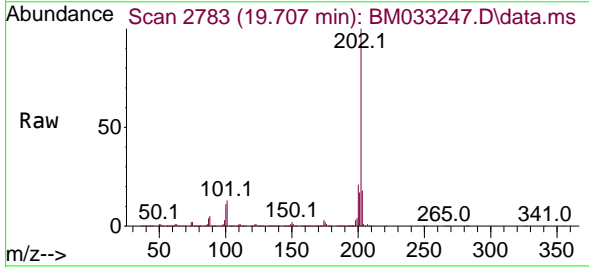
Ion	Ratio	Lower	Upper
184	100		
185	13.9	10.6	16.0
183	11.8	9.0	13.4

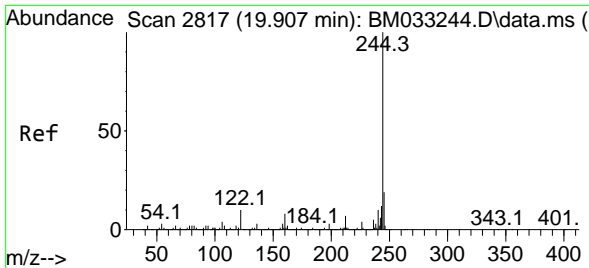


#78
 Pyrene
 Concen: 70.516 ng
 RT: 19.707 min Scan# 2783
 Delta R.T. 0.000 min
 Lab File: BM033247.D
 Acq: 24 Nov 2021 14:01

Tgt Ion:202 Resp: 3257660

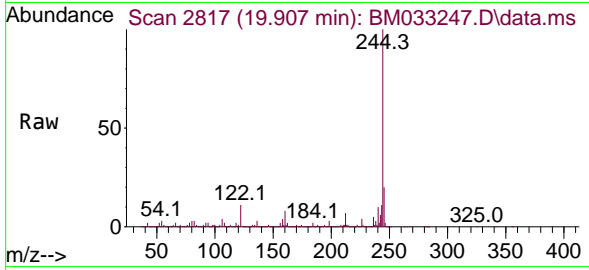
Ion	Ratio	Lower	Upper
202	100		
200	20.8	16.6	25.0
203	17.5	13.7	20.5



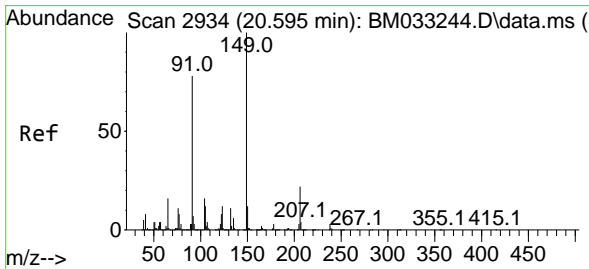
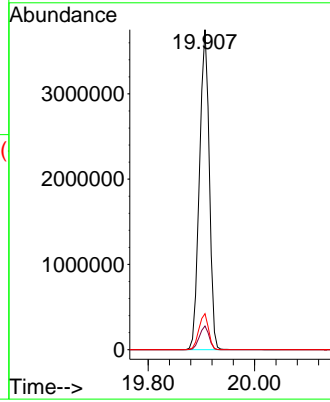
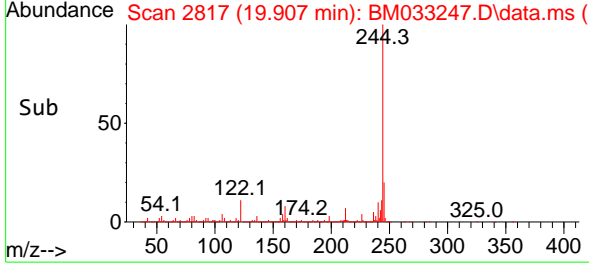


#79
 Terphenyl-d14
 Concen: 152.057 ng
 RT: 19.907 min Scan# 2817
 Delta R.T. 0.000 min
 Lab File: BM033247.D
 Acq: 24 Nov 2021 14:01

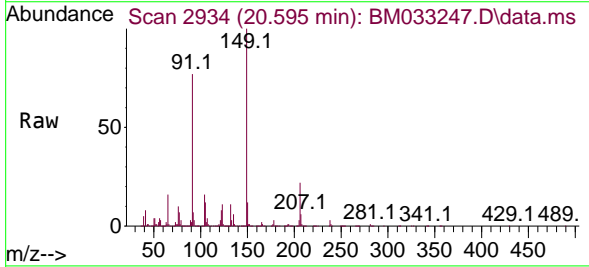
Instrument :
 BNA_M
 ClientSampleId :
 SSTDICC080



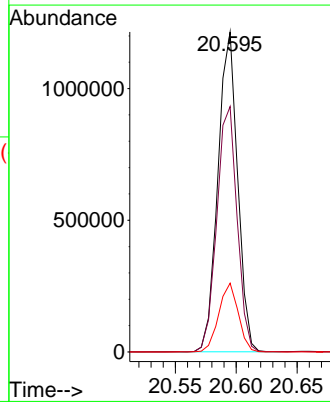
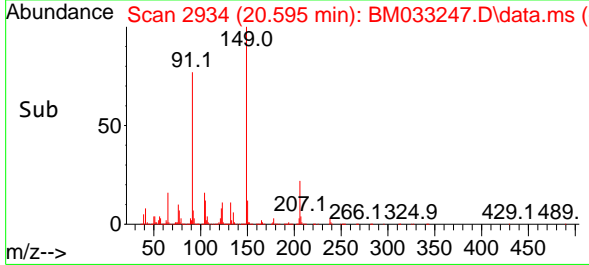
Tgt Ion:244 Resp: 4802566
 Ion Ratio Lower Upper
 244 100
 212 7.4 6.5 9.7
 122 11.2 8.7 13.1

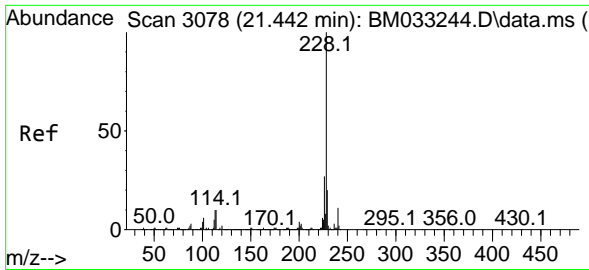


#80
 Butylbenzylphthalate
 Concen: 73.609 ng
 RT: 20.595 min Scan# 2934
 Delta R.T. 0.000 min
 Lab File: BM033247.D
 Acq: 24 Nov 2021 14:01



Tgt Ion:149 Resp: 1366802
 Ion Ratio Lower Upper
 149 100
 91 76.7 64.0 96.0
 206 21.5 14.4 21.6



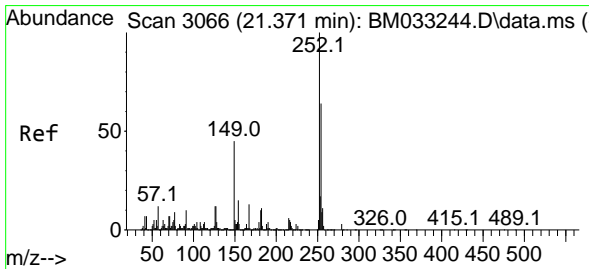
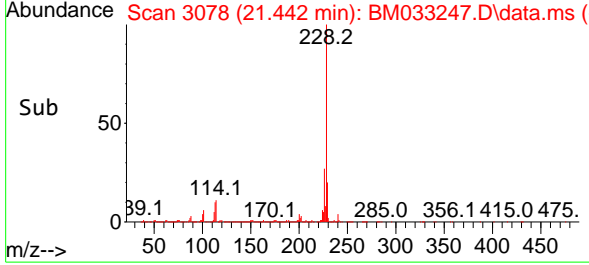
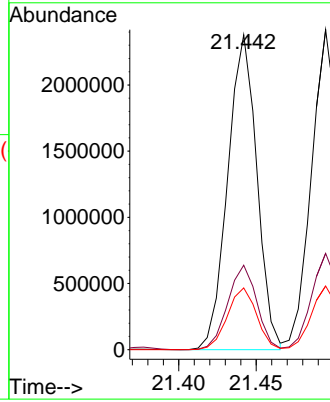
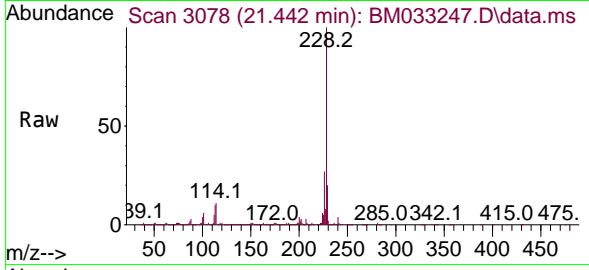


#81
 Benzo(a)anthracene
 Concen: 70.739 ng
 RT: 21.442 min Scan# 3078
 Delta R.T. 0.000 min
 Lab File: BM033247.D
 Acq: 24 Nov 2021 14:01

Instrument :
 BNA_M
 ClientSampleId :
 SSTDICC080

Tgt Ion:228 Resp: 3112044

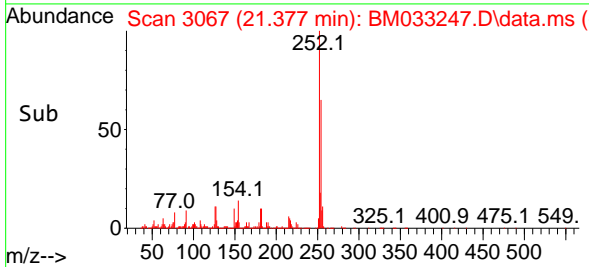
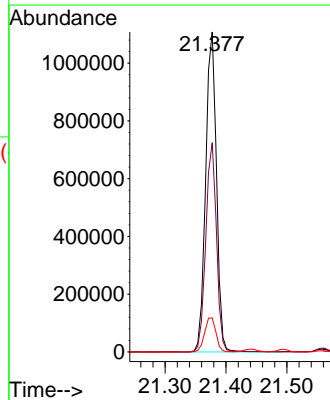
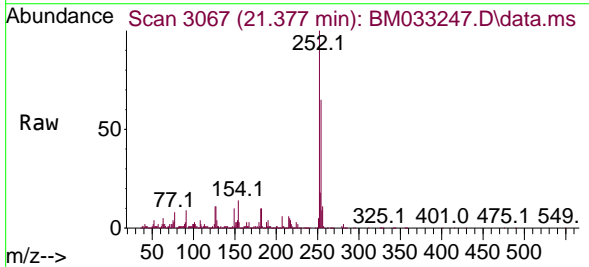
Ion	Ratio	Lower	Upper
228	100		
226	26.8	21.4	32.2
229	19.6	15.3	22.9

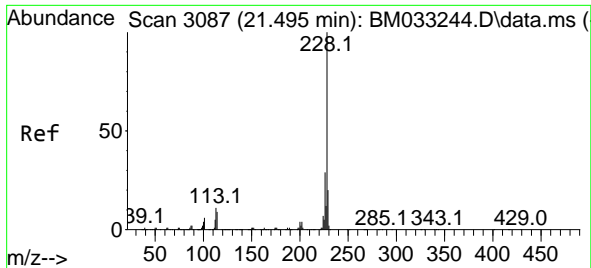


#82
 3,3'-Dichlorobenzidine
 Concen: 99.022 ng
 RT: 21.377 min Scan# 3067
 Delta R.T. 0.006 min
 Lab File: BM033247.D
 Acq: 24 Nov 2021 14:01

Tgt Ion:252 Resp: 1367664

Ion	Ratio	Lower	Upper
252	100		
254	65.4	51.6	77.4
126	10.7	9.7	14.5

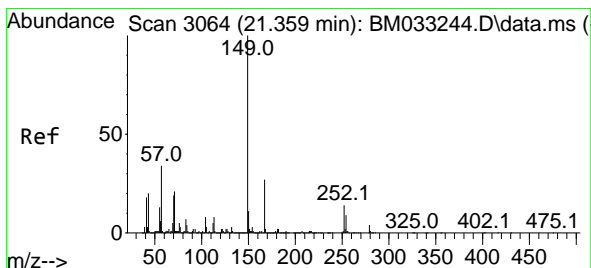
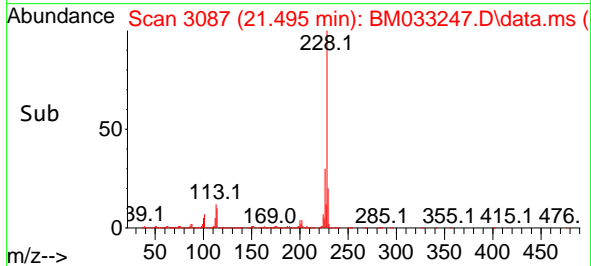
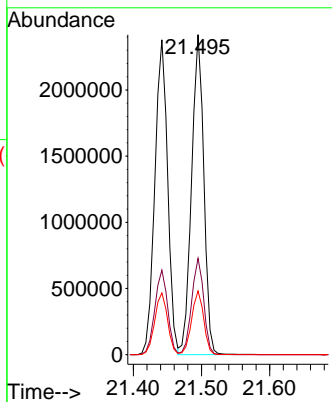
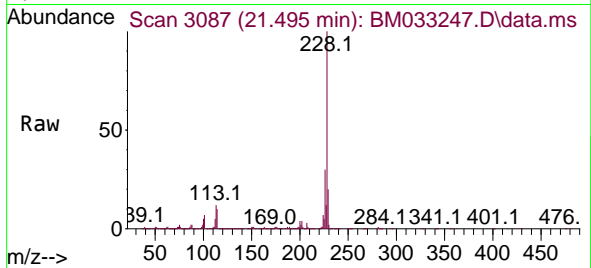




#83
 Chrysene
 Concen: 69.225 ng
 RT: 21.495 min Scan# 3087
 Delta R.T. 0.000 min
 Lab File: BM033247.D
 Acq: 24 Nov 2021 14:01

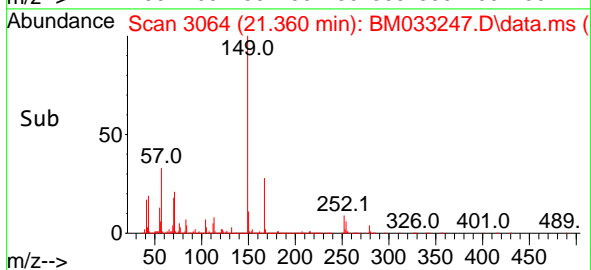
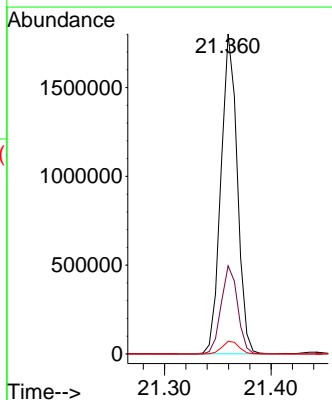
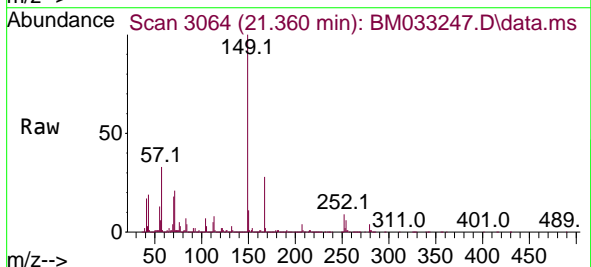
Instrument :
 BNA_M
 ClientSampleId :
 SSTDICC080

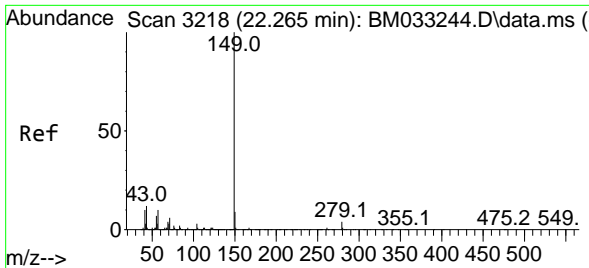
Tgt Ion:228 Resp: 2991928
 Ion Ratio Lower Upper
 228 100
 226 30.1 24.0 36.0
 229 19.9 16.0 24.0



#84
 Bis(2-ethylhexyl)phthalate
 Concen: 77.239 ng
 RT: 21.360 min Scan# 3064
 Delta R.T. 0.000 min
 Lab File: BM033247.D
 Acq: 24 Nov 2021 14:01

Tgt Ion:149 Resp: 1913138
 Ion Ratio Lower Upper
 149 100
 167 27.5 19.7 29.5
 279 4.0 2.6 4.0

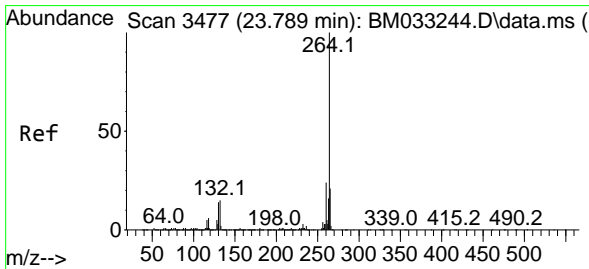
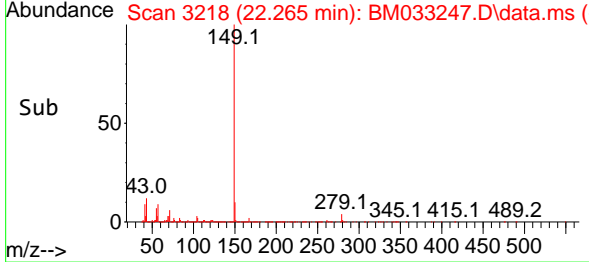
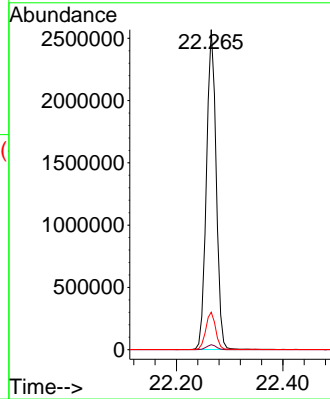
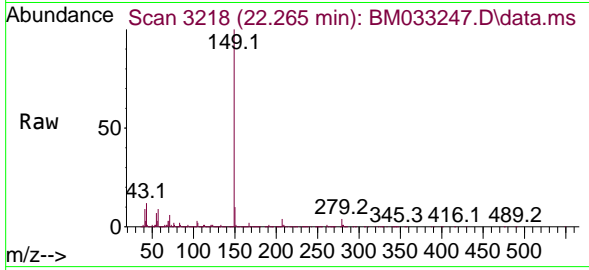




#85
 Di-n-octyl phthalate
 Concen: 73.602 ng
 RT: 22.265 min Scan# 31
 Delta R.T. 0.000 min
 Lab File: BM033247.D
 Acq: 24 Nov 2021 14:01

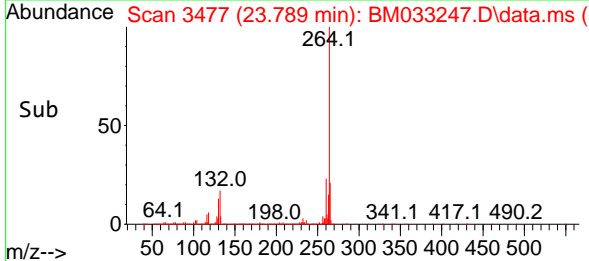
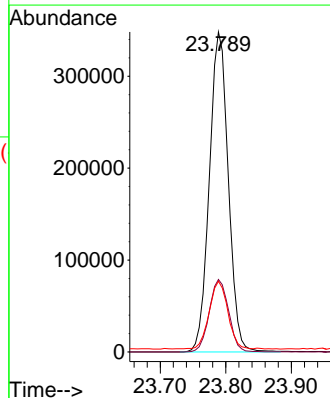
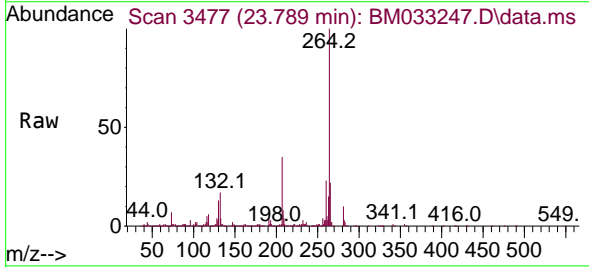
Instrument :
 BNA_M
 ClientSampleId :
 SSTDICC080

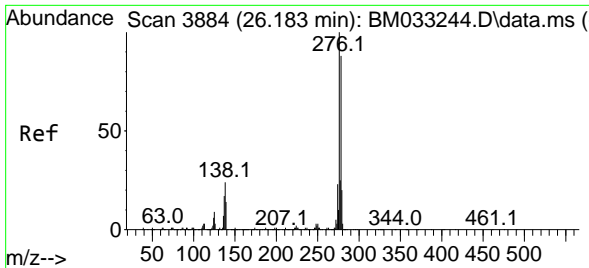
Tgt Ion:149 Resp: 3251248
 Ion Ratio Lower Upper
 149 100
 167 1.6 1.2 1.8
 43 12.0 10.4 15.6



#86
 Perylene-d12
 Concen: 20.000 ng
 RT: 23.789 min Scan# 3477
 Delta R.T. 0.000 min
 Lab File: BM033247.D
 Acq: 24 Nov 2021 14:01

Tgt Ion:264 Resp: 699227
 Ion Ratio Lower Upper
 264 100
 260 22.7 19.3 28.9
 265 22.1 18.3 27.5

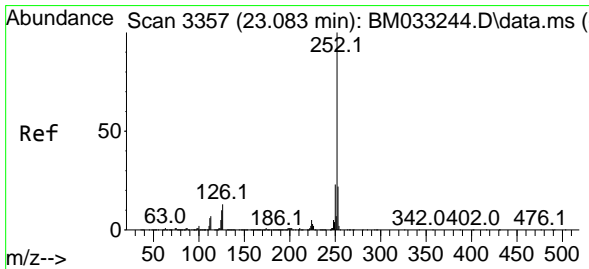
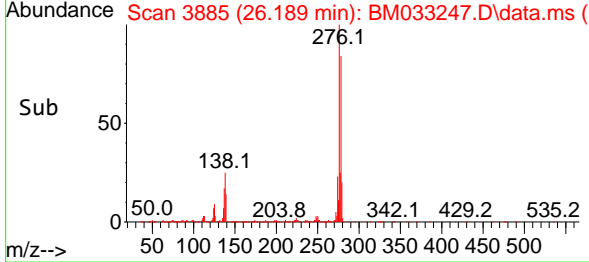
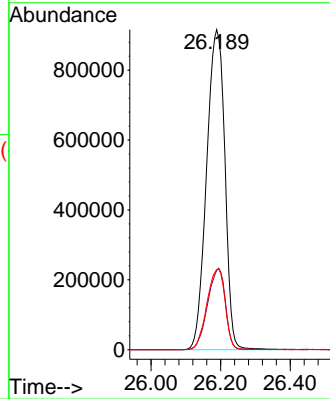
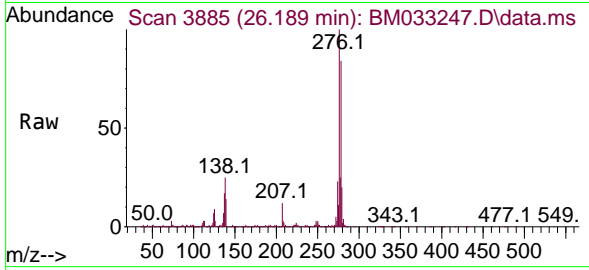




#87
 Indeno(1,2,3-cd)pyrene
 Concen: 77.290 ng
 RT: 26.189 min Scan# 31
 Delta R.T. 0.006 min
 Lab File: BM033247.D
 Acq: 24 Nov 2021 14:01

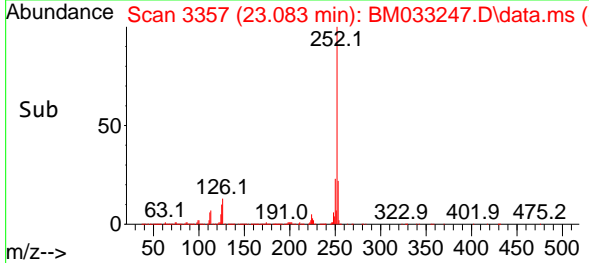
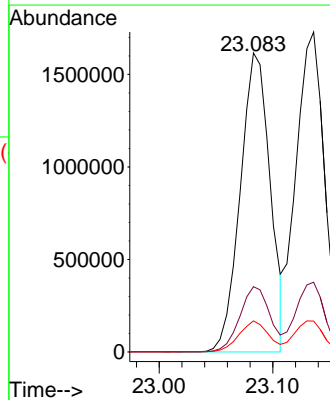
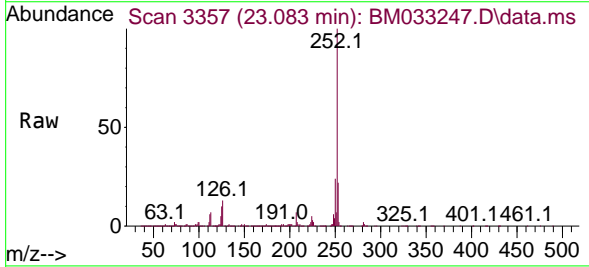
Instrument :
 BNA_M
 ClientSampleId :
 SSTDICC080

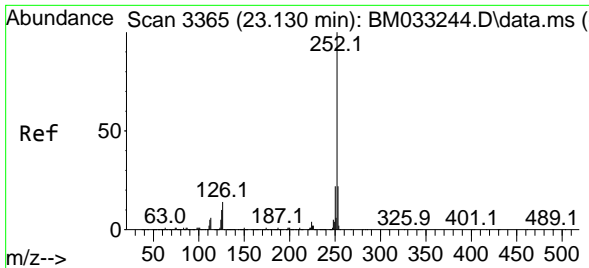
Tgt Ion:276 Resp: 3340146
 Ion Ratio Lower Upper
 276 100
 138 24.6 18.4 27.6
 277 25.2 20.1 30.1



#88
 Benzo(b)fluoranthene
 Concen: 69.290 ng
 RT: 23.083 min Scan# 3357
 Delta R.T. 0.000 min
 Lab File: BM033247.D
 Acq: 24 Nov 2021 14:01

Tgt Ion:252 Resp: 2949858
 Ion Ratio Lower Upper
 252 100
 253 21.9 18.0 27.0
 125 10.4 7.5 11.3

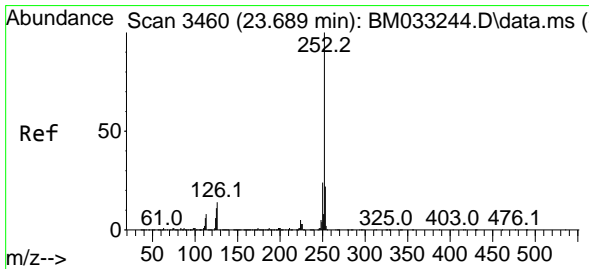
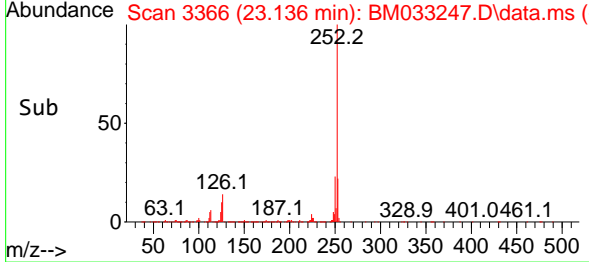
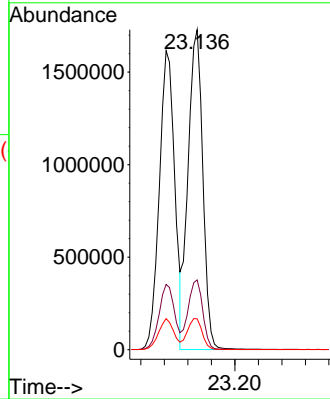
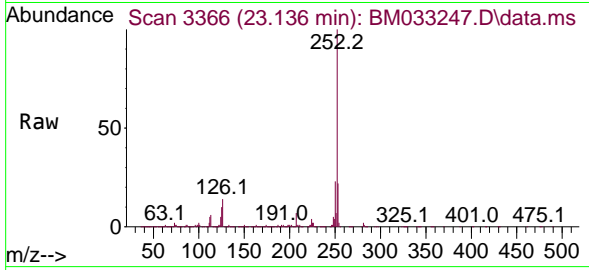




#89
 Benzo(k)fluoranthene
 Concen: 72.562 ng
 RT: 23.136 min Scan# 31
 Delta R.T. 0.006 min
 Lab File: BM033247.D
 Acq: 24 Nov 2021 14:01

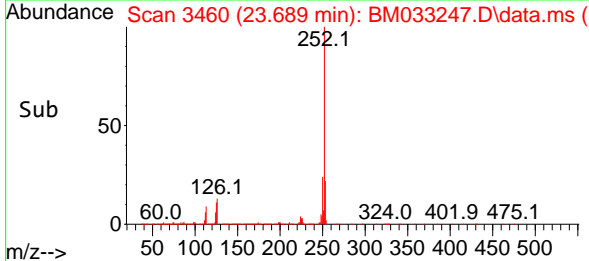
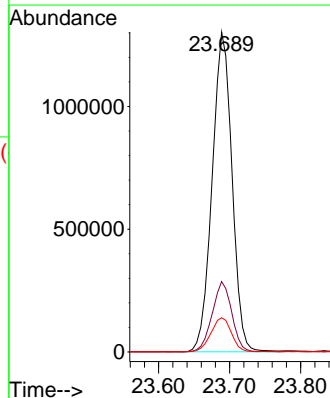
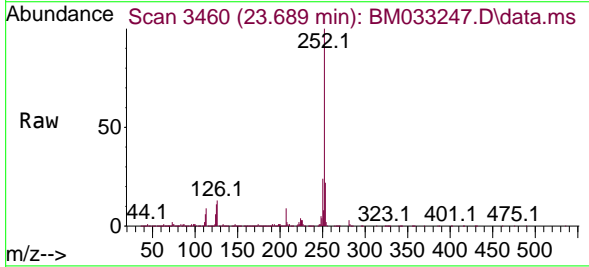
Instrument :
 BNA_M
 ClientSampleId :
 SSTDICC080

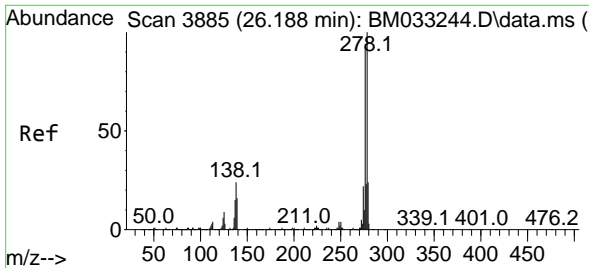
Tgt Ion:252 Resp: 3011252
 Ion Ratio Lower Upper
 252 100
 253 21.8 17.3 25.9
 125 9.7 7.5 11.3



#90
 Benzo(a)pyrene
 Concen: 71.726 ng
 RT: 23.689 min Scan# 3460
 Delta R.T. 0.000 min
 Lab File: BM033247.D
 Acq: 24 Nov 2021 14:01

Tgt Ion:252 Resp: 2522974
 Ion Ratio Lower Upper
 252 100
 253 22.0 17.4 26.2
 125 10.7 8.1 12.1



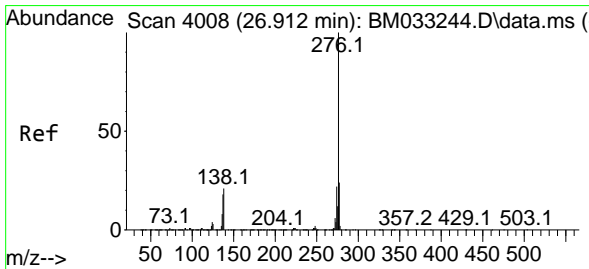
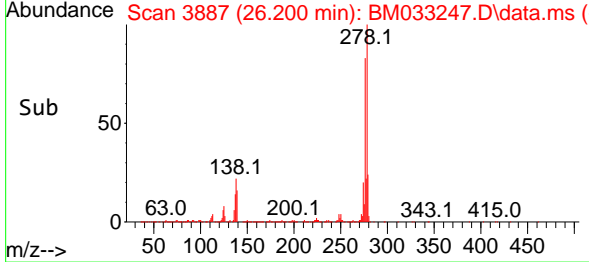
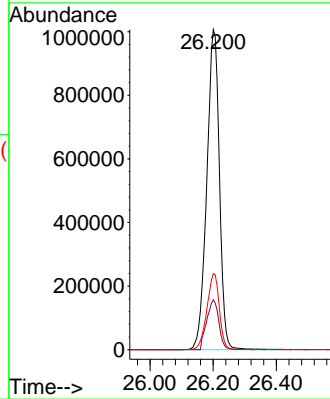
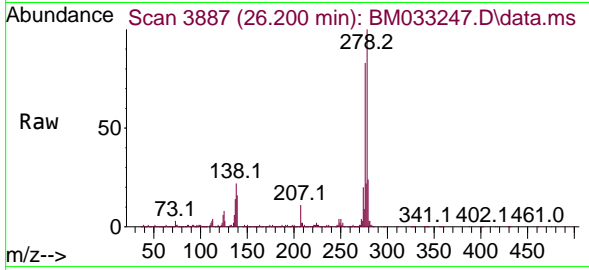


#91
 Dibenzo(a,h)anthracene
 Concen: 77.666 ng
 RT: 26.200 min Scan# 3887
 Delta R.T. 0.012 min
 Lab File: BM033247.D
 Acq: 24 Nov 2021 14:01

Instrument : BNA_M
 ClientSampleId : BM033247.D
 SSTDICC080

Tgt Ion: 278 Resp: 2794914

Ion	Ratio	Lower	Upper
278	100		
139	15.6	10.9	16.3
279	23.8	18.2	27.2



#92
 Benzo(g,h,i)perylene
 Concen: 78.324 ng
 RT: 26.924 min Scan# 4010
 Delta R.T. 0.012 min
 Lab File: BM033247.D
 Acq: 24 Nov 2021 14:01

Tgt Ion: 276 Resp: 2803494

Ion	Ratio	Lower	Upper
276	100		
277	24.2	19.4	29.0
138	22.0	14.6	22.0

