

Data Path : Z:\SVOASRV\HPCHEM1\BNA M\DATA\BM112818\
 Data File : BM017767.D
 Acq On : 28 Nov 2018 09:44
 Operator : JU/SJ
 Sample : SSTDCCC020
 Misc :
 ALS Vial : 2 Sample Multiplier: 1

Instrument :
 BNA_M
 ClientSampled :

Quant Time: Nov 28 11:35:53 2018
 Quant Method : Z:\SVOASRV\HPCHEM1\BNA_M\METHODS\SOM-EPA-BM11918MA.M
 Quant Title : SVOA CALIBRATION
 QLast Update : Fri Nov 23 21:57:24 2018
 Response via : Initial Calibration

| Internal Standards | R.T. | QIon | Response | Conc | Units | Dev(Min) |
|---------------------------|-------|------|----------|-------|-------|----------|
| 1) 1,4-Dichlorobenzene-d4 | 7.59 | 152 | 209607 | 20.00 | ng/ul | 0.00 |
| 18) Naphthalene-d8 | 10.36 | 136 | 973117 | 20.00 | ng/ul | 0.00 |
| 35) Acenaphthene-d10 | 14.24 | 164 | 611212 | 20.00 | ng/ul | 0.00 |
| 61) Phenanthrene-d10 | 16.99 | 188 | 1452476 | 20.00 | ng/ul | 0.00 |
| 77) Chrysene-d12 | 21.20 | 240 | 1709343 | 20.00 | ng/ul | 0.00 |
| 85) Perylene-d12 | 23.39 | 264 | 1710362 | 20.00 | ng/ul | 0.00 |

System Monitoring Compounds

| | | | | | | |
|--------------------------------|-------|-----|---------|-------|-------|-------|
| 3) 1,4-Dioxane-d8 | 3.19 | 96 | 33589 | 7.33 | ng/uL | 0.00 |
| 5) Phenol-d5 | 6.78 | 99 | 370251 | 19.34 | ng/ul | 0.00 |
| 7) Bis-(2-Chloroethyl)ether-d | 6.94 | 67 | 224399 | 19.44 | ng/ul | 0.00 |
| 9) 2-Chlorophenol-d4 | 7.13 | 132 | 299550 | 20.00 | ng/ul | 0.00 |
| 13) 4-Methylphenol-d8 | 8.30 | 113 | 305261 | 19.52 | ng/ul | 0.00 |
| 19) Nitrobenzene-d5 | 8.75 | 128 | 145944 | 19.53 | ng/ul | 0.00 |
| 22) 2-Nitrophenol-d4 | 9.46 | 143 | 170613 | 19.92 | ng/ul | 0.00 |
| 26) 2,4-Dichlorophenol-d3 | 9.99 | 165 | 325878 | 19.99 | ng/ul | 0.00 |
| 29) 4-Chloroaniline-d4 | 10.51 | 131 | 289742 | 20.71 | ng/ul | -0.01 |
| 43) Dimethylphthalate-d6 | 13.66 | 166 | 1044518 | 19.70 | ng/ul | 0.00 |
| 46) Acenaphthylene-d8 | 13.93 | 160 | 1288845 | 20.08 | ng/ul | 0.00 |
| 51) 4-Nitrophenol-d4 | 14.46 | 143 | 171813 | 17.82 | ng/ul | 0.00 |
| 57) Fluorene-d10 | 15.24 | 176 | 903753 | 19.73 | ng/ul | 0.00 |
| 62) 4,6-Dinitro-2-methylphenol | 15.37 | 200 | 194926 | 18.77 | ng/ul | 0.00 |
| 70) Anthracene-d10 | 17.09 | 188 | 1439123 | 19.90 | ng/ul | 0.00 |
| 78) Pyrene-d10 | 19.40 | 212 | 1633441 | 19.75 | ng/ul | 0.00 |
| 89) Benzo(a)pyrene-d12 | 23.24 | 264 | 1844367 | 19.88 | ng/ul | 0.00 |

Target Compounds

| Target Compounds | R.T. | QIon | Response | Conc | Units | Ovalue |
|--------------------------------|-------|------|----------|--------|-------|--------|
| 2) 1,4-Dioxane | 3.22 | 88 | 34168 | 6.992 | ng/uL | 91 |
| 4) Benzaldehyde | 6.75 | 77 | 64412 | 18.045 | ng/ul | 96 |
| 6) Phenol | 6.80 | 94 | 370380 | 19.383 | ng/ul | 99 |
| 8) Bis(2-Chloroethyl)ether | 7.03 | 93 | 283342 | 19.409 | ng/ul | 99 |
| 10) 2-Chlorophenol | 7.16 | 128 | 295415 | 19.740 | ng/ul | 96 |
| 11) 2-Methylphenol | 8.03 | 108 | 281317 | 19.296 | ng/ul | 98 |
| 12) 2,2'-oxybis(1-Chloropropan | 8.12 | 45 | 331639 | 19.255 | ng/ul | 99 |
| 14) Acetophenone | 8.41 | 105 | 486251 | 19.944 | ng/ul | 99 |
| 15) N-Nitroso-di-n-propylamine | 8.40 | 70 | 254854 | 20.042 | ng/ul | 98 |
| 16) 4-Methylphenol | 8.36 | 108 | 305736 | 19.407 | ng/ul | 100 |
| 17) Hexachloroethane | 8.65 | 117 | 117970 | 19.443 | ng/ul | 94 |
| 20) Nitrobenzene | 8.79 | 77 | 373351 | 19.901 | ng/ul | 99 |
| 21) Isophorone | 9.31 | 82 | 687333 | 19.694 | ng/ul | 99 |
| 23) 2-Nitrophenol | 9.49 | 139 | 173800 | 19.500 | ng/ul | 99 |
| 24) 2,4-Dimethylphenol | 9.55 | 107 | 375842 | 20.186 | ng/ul | 96 |
| 25) Bis(2-Chloroethoxy)methane | 9.79 | 93 | 413312 | 19.353 | ng/ul | 98 |
| 27) 2,4-Dichlorophenol | 10.02 | 162 | 307557 | 19.978 | ng/ul | 98 |
| 28) Naphthalene | 10.41 | 128 | 994721 | 19.619 | ng/ul | 99 |
| 30) 4-Chloroaniline | 10.53 | 127 | 299624 | 20.990 | ng/ul | 99 |
| 31) Hexachlorobutadiene | 10.69 | 225 | 204009 | 19.954 | ng/ul | 97 |
| 32) Caprolactam | 11.32 | 113 | 57690 | 11.327 | ng/ul | 88 |
| 33) 4-Chloro-3-methylphenol | 11.67 | 107 | 345770 | 19.777 | ng/ul | 99 |
| 34) 2-Methylnaphthalene | 12.03 | 142 | 744369 | 19.667 | ng/ul | 99 |

Data Path : Z:\SVOASRV\HPCHEM1\BNA M\DATA\BM112818\
 Data File : BM017767.D
 Acq On : 28 Nov 2018 09:44
 Operator : JU/SJ
 Sample : SSTDCCC020
 Misc :
 ALS Vial : 2 Sample Multiplier: 1

Instrument :
 BNA_M
 ClientSampleId :

Quant Time: Nov 28 11:35:53 2018
 Quant Method : Z:\SVOASRV\HPCHEM1\BNA_M\METHODS\SOM-EPA-BM11918MA.M
 Quant Title : SVOA CALIBRATION
 QLast Update : Fri Nov 23 21:57:24 2018
 Response via : Initial Calibration

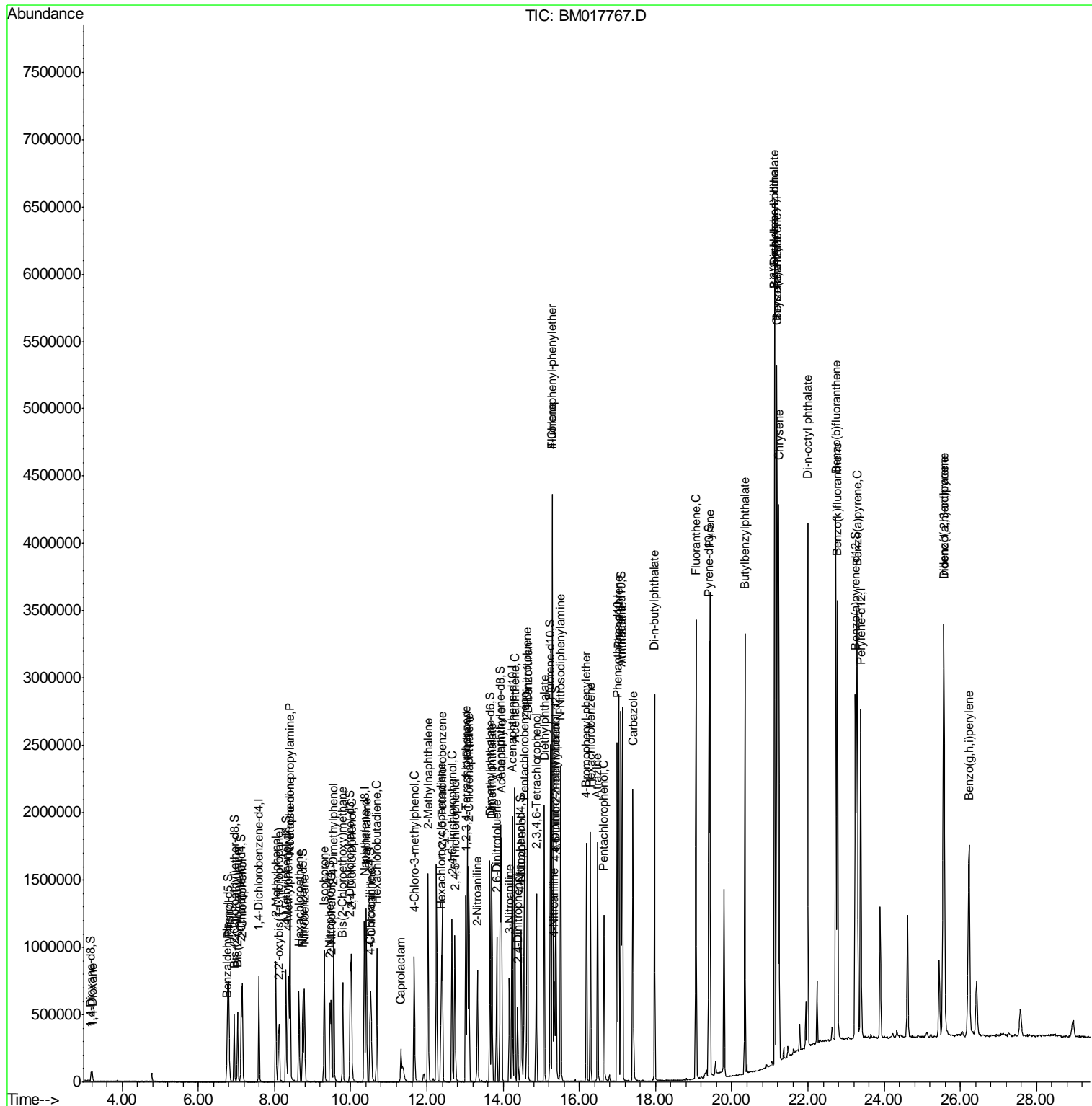
| Internal Standards | R.T. | QIon | Response | Conc | Units | Dev(Min) |
|--------------------------------|-------|------|----------|--------|-------|----------|
| 36) 1,2,4,5-Tetrachlorobenzene | 12.40 | 216 | 403354 | 19.778 | ng/ul | 98 |
| 37) Hexachlorocyclopentadiene | 12.37 | 237 | 240721 | 18.303 | ng/ul | 98 |
| 38) 2,4,6-Trichlorophenol | 12.66 | 196 | 266506 | 20.107 | ng/ul | 99 |
| 39) 2,4,5-Trichlorophenol | 12.73 | 196 | 277389 | 19.568 | ng/ul | 98 |
| 40) 1,1'-Biphenyl | 13.06 | 154 | 983060 | 19.538 | ng/ul | 98 |
| 41) 2-Chloronaphthalene | 13.10 | 162 | 781338 | 19.852 | ng/ul | 99 |
| 42) 2-Nitroaniline | 13.33 | 65 | 236536 | 20.638 | ng/ul | 97 |
| 44) Dimethylphthalate | 13.70 | 163 | 1008835 | 19.635 | ng/ul | 100 |
| 45) 2,6-Dinitrotoluene | 13.83 | 165 | 204925 | 20.297 | ng/ul | 98 |
| 47) Acenaphthylene | 13.96 | 152 | 1194035 | 19.920 | ng/ul | 99 |
| 48) 3-Nitroaniline | 14.16 | 138 | 192259 | 19.961 | ng/ul | 98 |
| 49) Acenaphthene | 14.30 | 153 | 861067 | 19.932 | ng/ul | 99 |
| 50) 2,4-Dinitrophenol | 14.37 | 184 | 116806 | 17.064 | ng/ul | 96 |
| 52) 4-Nitrophenol | 14.48 | 109 | 157338 | 19.839 | ng/ul | 93 |
| 53) Dibenzofuran | 14.64 | 168 | 1219325 | 19.946 | ng/ul | 99 |
| 54) 2,4-Dinitrotoluene | 14.63 | 165 | 311368 | 20.369 | ng/ul | 96 |
| 55) 2,3,4,6-Tetrachlorophenol | 14.87 | 232 | 258418 | 19.771 | ng/ul | 98 |
| 56) Diethylphthalate | 15.08 | 149 | 1060909 | 20.044 | ng/ul | 99 |
| 58) Fluorene | 15.29 | 166 | 1016418 | 19.938 | ng/ul | 99 |
| 59) 4-Chlorophenyl-phenylether | 15.29 | 204 | 518362 | 19.795 | ng/ul | 97 |
| 60) 4-Nitroaniline | 15.34 | 138 | 196699 | 18.370 | ng/ul | 99 |
| 63) 4,6-Dinitro-2-methylphenol | 15.39 | 198 | 198417 | 18.542 | ng/ul | 93 |
| 64) N-Nitrosodiphenylamine | 15.52 | 169 | 886274 | 19.819 | ng/ul | 99 |
| 65) 4-Bromophenyl-phenylether | 16.19 | 248 | 323887 | 19.514 | ng/ul | 97 |
| 66) Hexachlorobenzene | 16.29 | 284 | 362972 | 19.675 | ng/ul | 96 |
| 67) Atrazine | 16.48 | 200 | 324513 | 19.564 | ng/ul | 99 |
| 68) Pentachlorophenol | 16.64 | 266 | 213514 | 18.603 | ng/ul | 99 |
| 69) Phenanthrene | 17.03 | 178 | 1662648 | 20.017 | ng/ul | 99 |
| 71) Anthracene | 17.13 | 178 | 1708909 | 20.118 | ng/ul | 99 |
| 72) 1,2,3,4-Tetrachlorobenzene | 13.02 | 216 | 392053 | 19.047 | ng/uL | 99 |
| 73) Pentachlorobenzene | 14.56 | 250 | 412607 | 19.598 | ng/uL | 98 |
| 74) Carbazole | 17.41 | 167 | 1482298 | 19.804 | ng/ul | 100 |
| 75) Di-n-butylphthalate | 17.97 | 149 | 1874811 | 19.820 | ng/ul | 100 |
| 76) Fluoranthene | 19.06 | 202 | 1977407 | 20.240 | ng/ul | 99 |
| 79) Pyrene | 19.43 | 202 | 2058781 | 19.841 | ng/ul | 99 |
| 80) Butylbenzylphthalate | 20.34 | 149 | 876568 | 19.756 | ng/ul | 99 |
| 81) 3,3'-Dichlorobenzidine | 21.13 | 252 | 680276 | 19.333 | ng/ul | 99 |
| 82) Benzo(a)anthracene | 21.19 | 228 | 2102490 | 19.831 | ng/ul | 99 |
| 83) Bis(2-ethylhexyl)phthalate | 21.12 | 149 | 1337476 | 20.356 | ng/ul | 100 |
| 84) Chrysene | 21.23 | 228 | 1974611 | 19.914 | ng/ul | 100 |
| 86) Di-n-octyl phthalate | 21.99 | 149 | 2296000 | 19.166 | ng/ul | 100 |
| 87) Benzo(b)fluoranthene | 22.73 | 252 | 2155017 | 20.270 | ng/ul | 98 |
| 88) Benzo(k)fluoranthene | 22.77 | 252 | 1978574 | 19.149 | ng/ul | 99 |
| 90) Benzo(a)pyrene | 23.29 | 252 | 2002692 | 19.864 | ng/ul | 99 |
| 91) Indeno(1,2,3-cd)pyrene | 25.56 | 276 | 2131830 | 19.956 | ng/ul | 99 |
| 92) Dibenzo(a,h)anthracene | 25.57 | 278 | 1764861 | 19.567 | ng/ul | 98 |
| 93) Benzo(g,h,i)perylene | 26.23 | 276 | 1756376 | 20.343 | ng/ul | 99 |

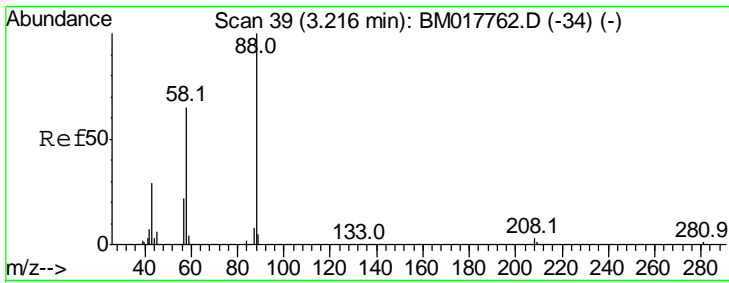
(#) = qualifier out of range (m) = manual integration (+) = signals summed

Data Path : Z:\SVOASRV\HPCHEM1\BNA M\DATA\BM112818\
 Data File : BM017767.D
 Acq On : 28 Nov 2018 09:44
 Operator : JU/SJ
 Sample : SSTDCCC020
 Misc :
 ALS Vial : 2 Sample Multiplier: 1

Instrument :
 BNA_M
 Client Sampled :

Quant Time: Nov 28 11:35:53 2018
 Quant Method : Z:\SVOASRV\HPCHEM1\BNA_M\METHODS\SOM-EPA-BM111918MA.M
 Quant Title : SVOA CALIBRATION
 QLast Update : Fri Nov 23 21:57:24 2018
 Response via : Initial Calibration

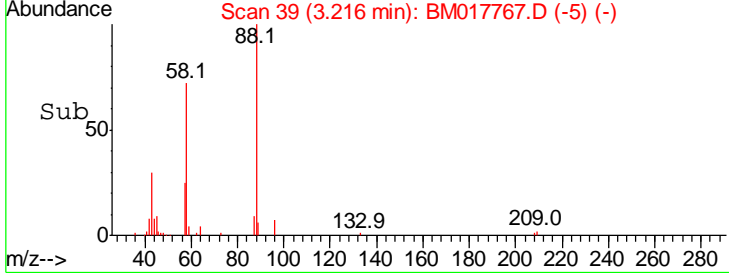
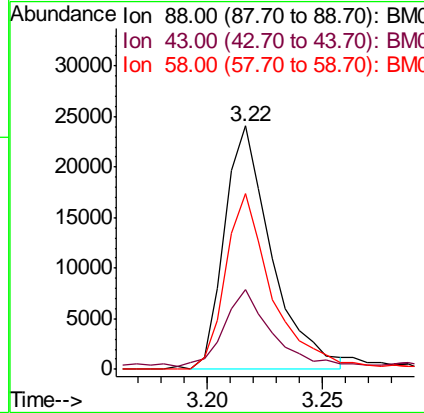
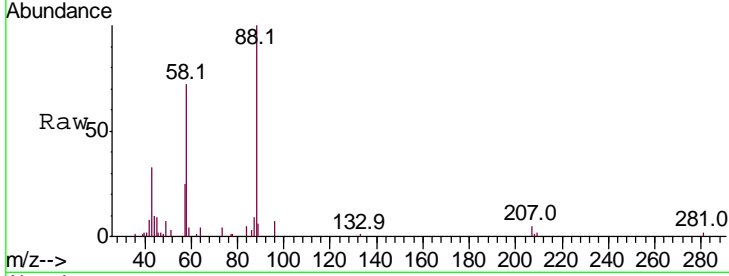




#2
 1,4-Dioxane
 Concen: 6.992 ng/uL
 RT: 3.22 min Scan# 39
 Delta R.T. -0.00 min
 Lab File: BM017767.D
 Acq: 28 Nov 2018 09:44

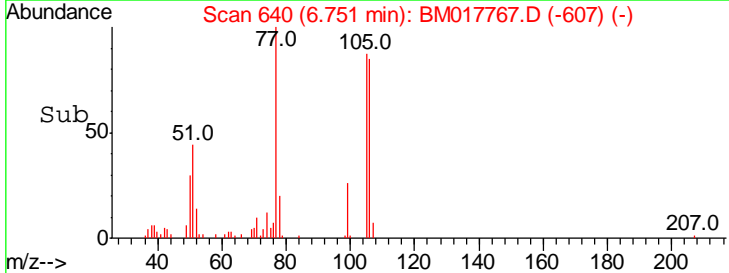
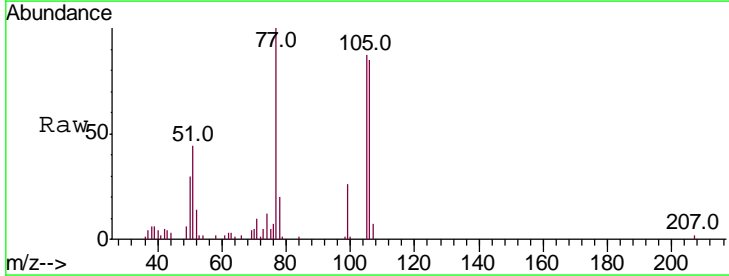
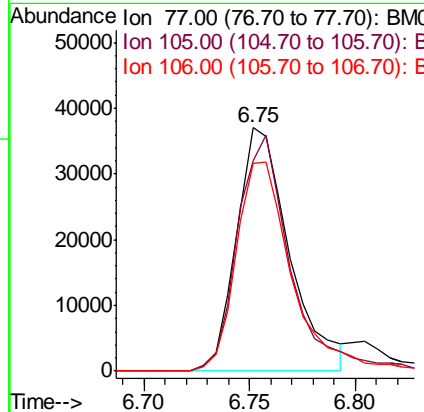
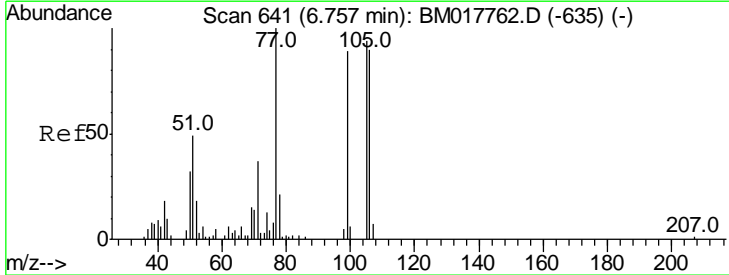
Instrument :
 BNA_M
ClientSampled :

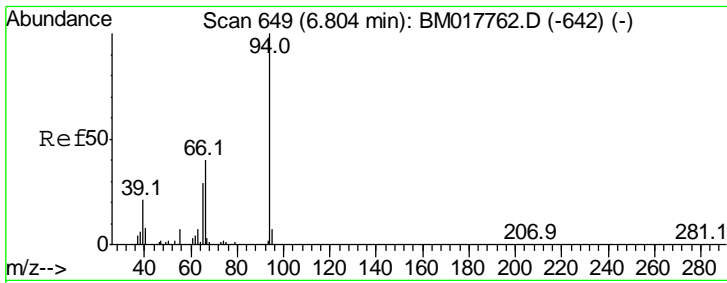
| Tgt Ion | Resp | Lower | Upper |
|---------|-------|-------|-------|
| 88 | 34168 | | |
| 88 | 100 | | |
| 43 | 32.7 | 27.4 | 41.0 |
| 58 | 72.3 | 50.2 | 75.4 |



#4
 Benzaldehyde
 Concen: 18.045 ng/ul
 RT: 6.75 min Scan# 640
 Delta R.T. -0.01 min
 Lab File: BM017767.D
 Acq: 28 Nov 2018 09:44

| Tgt Ion | Resp | Lower | Upper |
|---------|-------|-------|-------|
| 77 | 64412 | | |
| 77 | 100 | | |
| 105 | 86.6 | 74.4 | 111.6 |
| 106 | 85.1 | 67.4 | 101.2 |

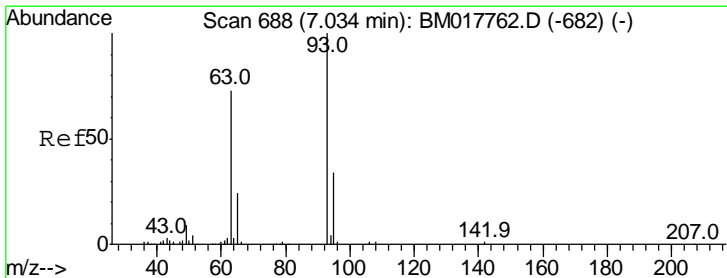
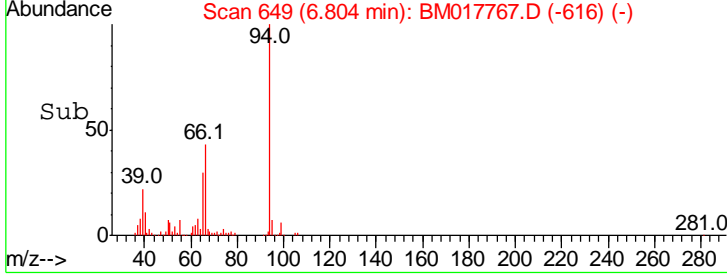
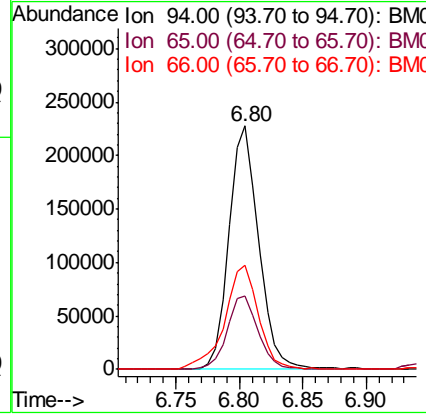
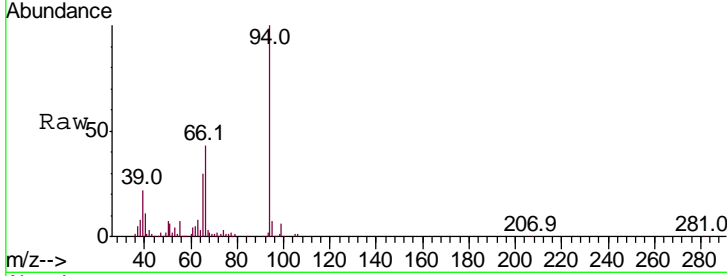




#6
 Phenol
 Concen: 19.383 ng/ul
 RT: 6.80 min Scan# 649
 Delta R.T. -0.01 min
 Lab File: BM017767.D
 Acq: 28 Nov 2018 09:44

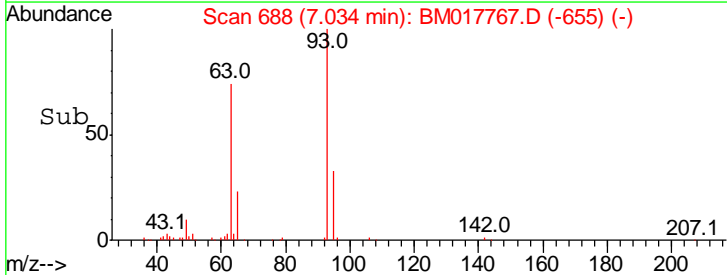
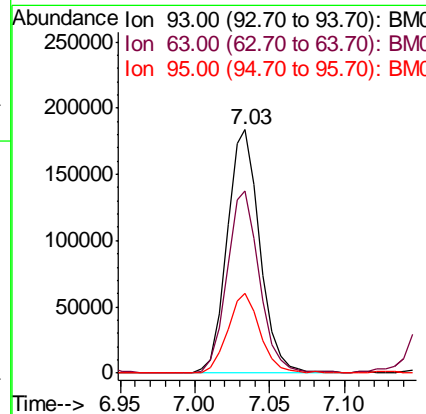
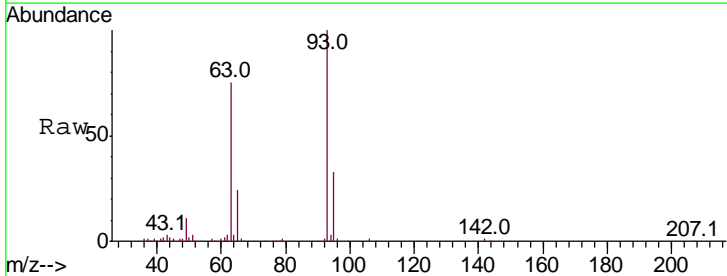
Instrument :
 BNA_M
 ClientSampled :

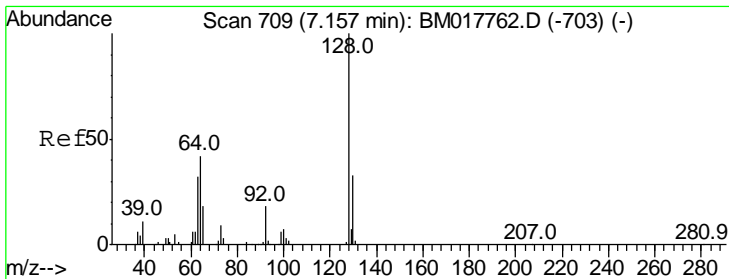
| Tgt Ion | Resp | Lower | Upper |
|---------|--------|-------|-------|
| 94 | 370380 | | |
| 65 | 30.0 | 24.7 | 37.1 |
| 66 | 42.7 | 34.6 | 51.8 |



#8
 Bis(2-Chloroethyl)ether
 Concen: 19.409 ng/ul
 RT: 7.03 min Scan# 688
 Delta R.T. -0.01 min
 Lab File: BM017767.D
 Acq: 28 Nov 2018 09:44

| Tgt Ion | Resp | Lower | Upper |
|---------|--------|-------|-------|
| 93 | 283342 | | |
| 63 | 74.7 | 60.6 | 90.8 |
| 95 | 33.0 | 25.4 | 38.2 |

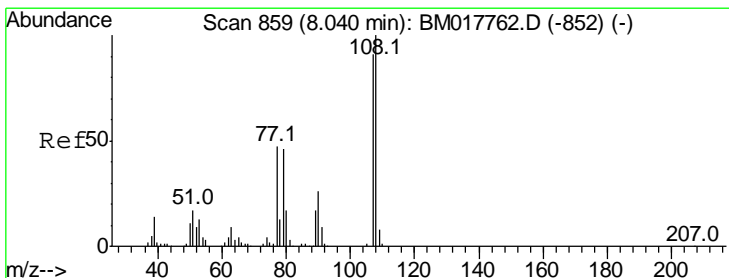
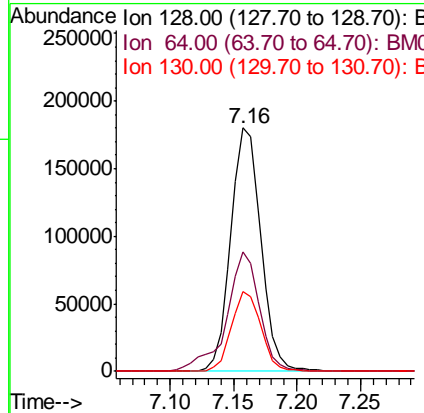
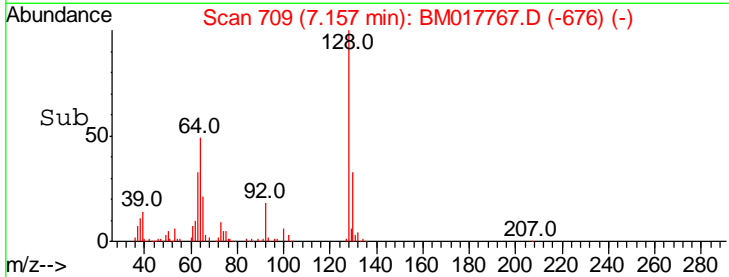
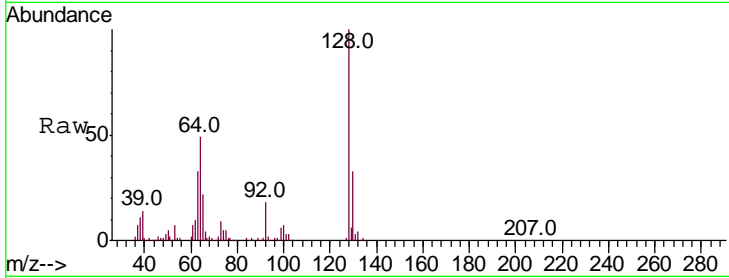




#10
 2-Chlorophenol
 Concen: 19.740 ng/ul
 RT: 7.16 min Scan# 709
 Delta R.T. -0.01 min
 Lab File: BM017767.D
 Acq: 28 Nov 2018 09:44

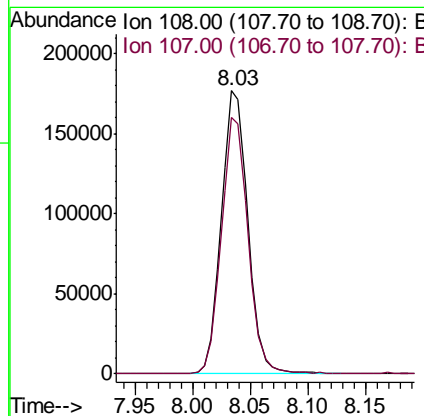
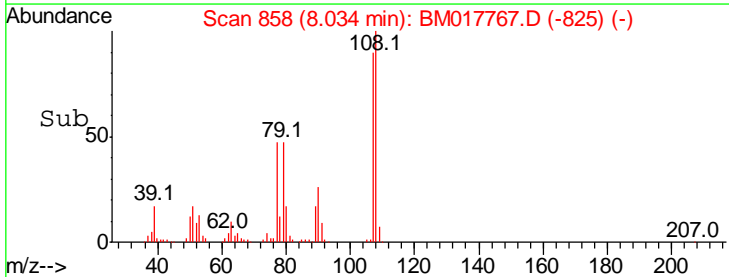
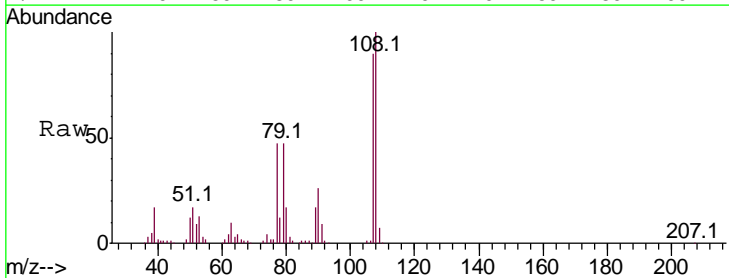
Instrument :
 BNA_M
 ClientSampled :

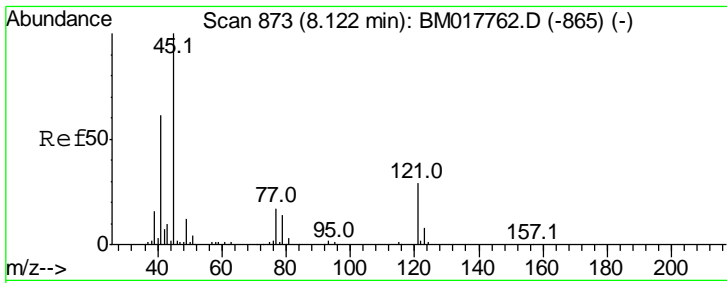
| Tgt Ion | Resp | Lower | Upper |
|---------|--------|-------|-------|
| 128 | 295415 | | |
| 64 | 48.9 | 36.8 | 55.2 |
| 130 | 32.9 | 25.0 | 37.4 |



#11
 2-Methylphenol
 Concen: 19.296 ng/ul
 RT: 8.03 min Scan# 858
 Delta R.T. -0.01 min
 Lab File: BM017767.D
 Acq: 28 Nov 2018 09:44

| Tgt Ion | Resp | Lower | Upper |
|---------|--------|-------|-------|
| 108 | 281317 | | |
| 107 | 90.4 | 70.8 | 106.2 |

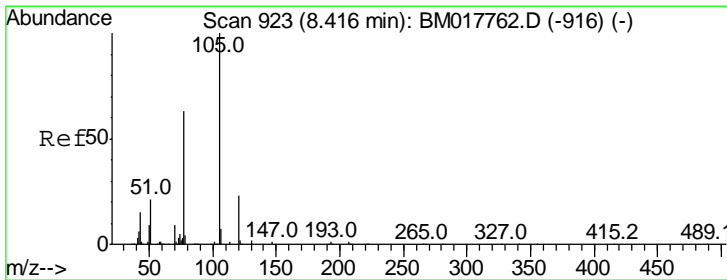
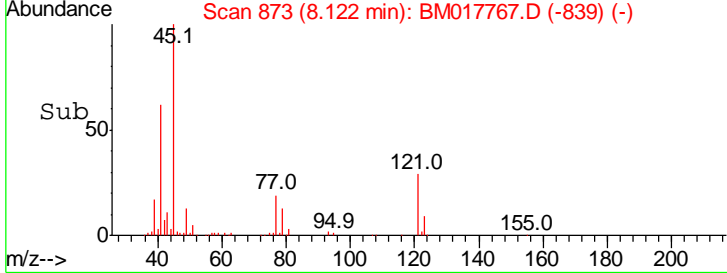
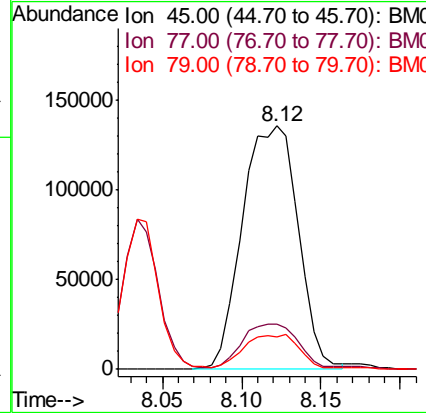
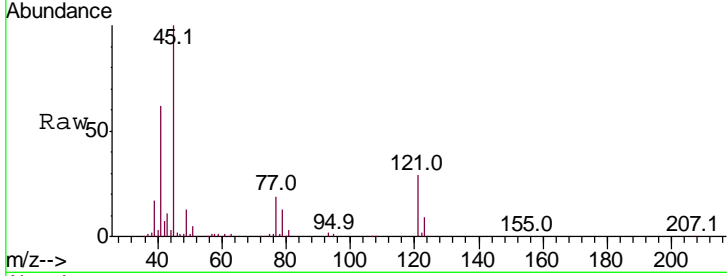




#12
 2,2'-oxybis(1-Chloropropane)
 Concen: 19.255 ng/ul
 RT: 8.12 min Scan# 873
 Delta R.T. -0.00 min
 Lab File: BM017767.D
 Acq: 28 Nov 2018 09:44

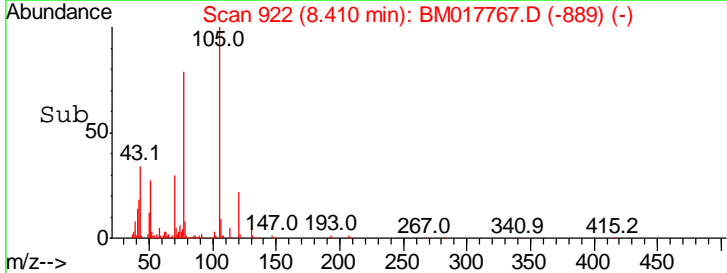
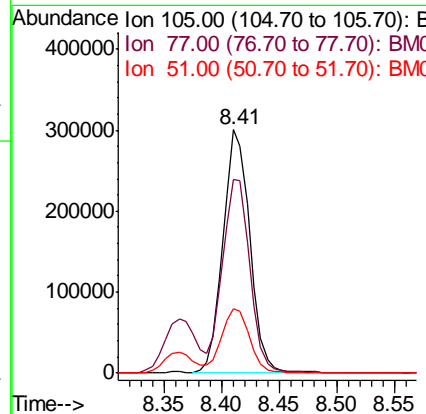
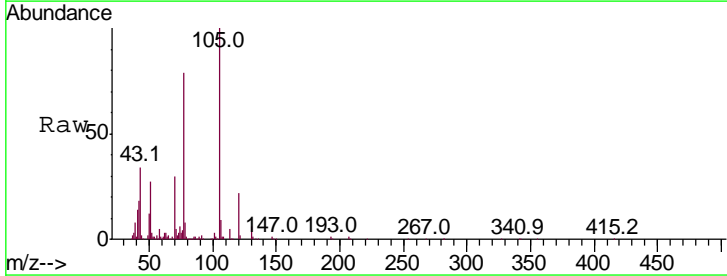
Instrument :
 BNA_M
 ClientSampled :

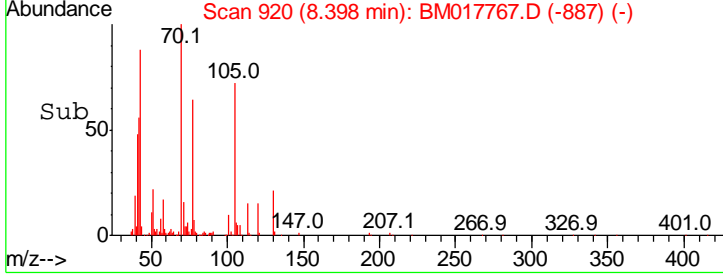
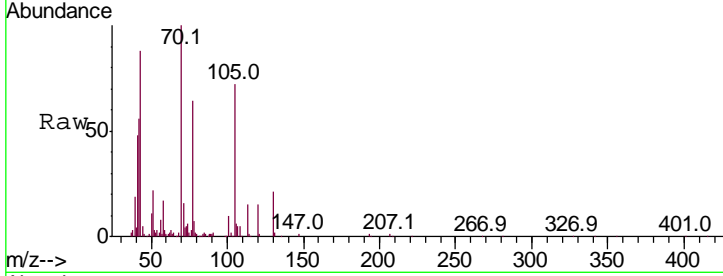
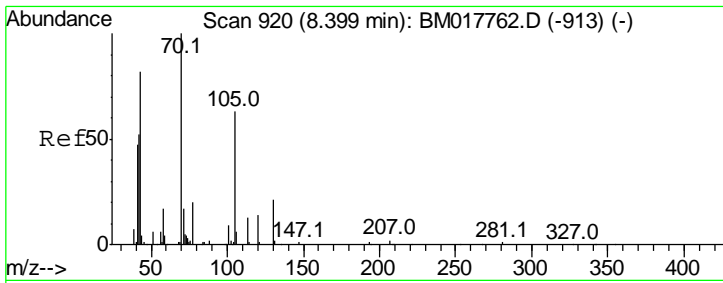
| Tgt Ion | Resp | Lower | Upper |
|---------|------|-------|-------|
| 45 | 100 | | |
| 77 | 18.8 | 15.3 | 22.9 |
| 79 | 13.5 | 11.4 | 17.0 |



#14
 Acetophenone
 Concen: 19.944 ng/ul
 RT: 8.41 min Scan# 922
 Delta R.T. -0.01 min
 Lab File: BM017767.D
 Acq: 28 Nov 2018 09:44

| Tgt Ion | Resp | Lower | Upper |
|---------|------|-------|-------|
| 105 | 100 | | |
| 77 | 79.4 | 63.0 | 94.6 |
| 51 | 26.7 | 21.3 | 31.9 |



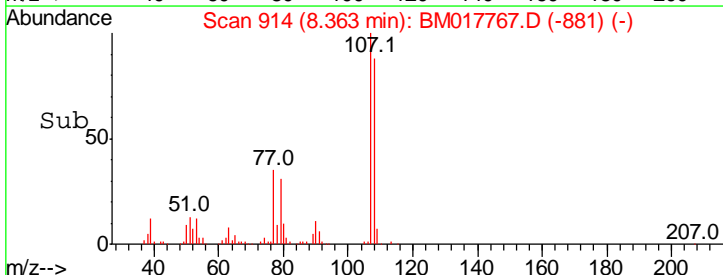
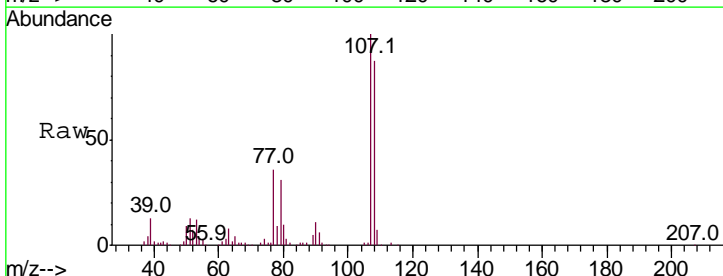
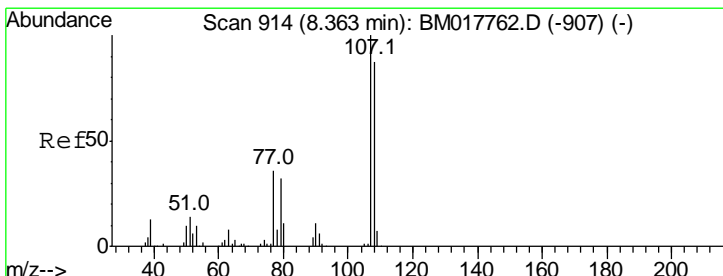
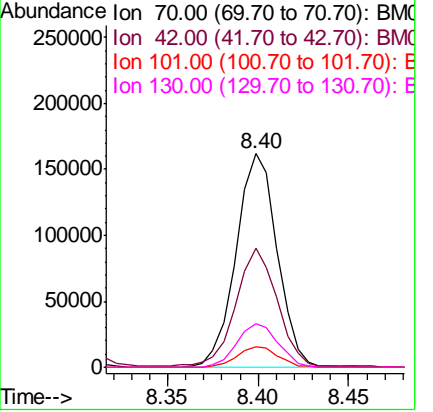


#15
 N-Nitroso-di-n-propylamine
 Concen: 20.042 ng/ul
 RT: 8.40 min Scan# 920
 Delta R.T. -0.01 min
 Lab File: BM017767.D
 Acq: 28 Nov 2018 09:44

Instrument :
 BNA_M
 ClientSampled :

Tgt Ion: 70 Resp: 254854

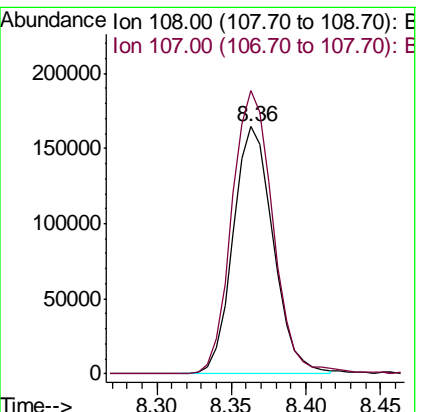
| Ion | Ratio | Lower | Upper |
|-----|-------|-------|-------|
| 70 | 100 | | |
| 42 | 55.5 | 42.7 | 64.1 |
| 101 | 9.6 | 7.6 | 11.4 |
| 130 | 20.6 | 16.7 | 25.1 |

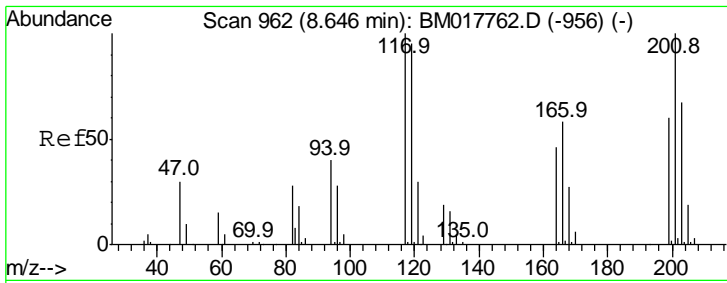


#16
 4-Methylphenol
 Concen: 19.407 ng/ul
 RT: 8.36 min Scan# 914
 Delta R.T. -0.01 min
 Lab File: BM017767.D
 Acq: 28 Nov 2018 09:44

Tgt Ion: 108 Resp: 305736

| Ion | Ratio | Lower | Upper |
|-----|-------|-------|-------|
| 108 | 100 | | |
| 107 | 114.6 | 91.3 | 136.9 |

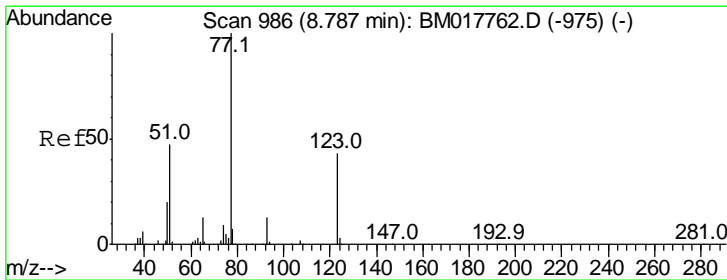
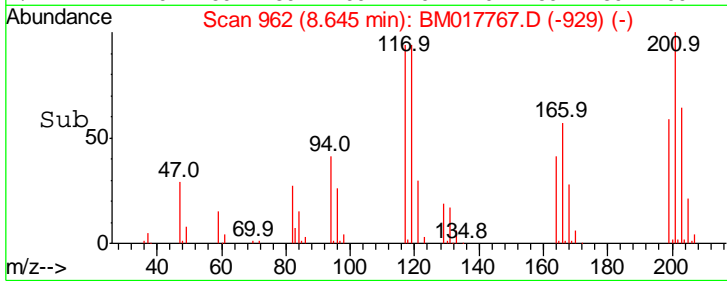
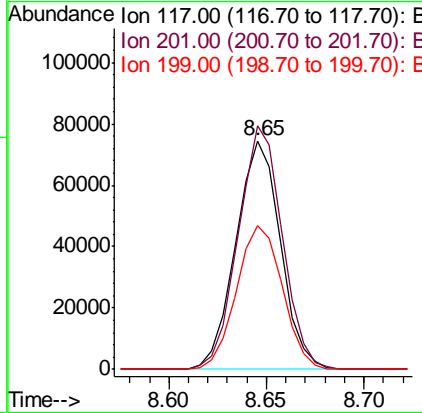
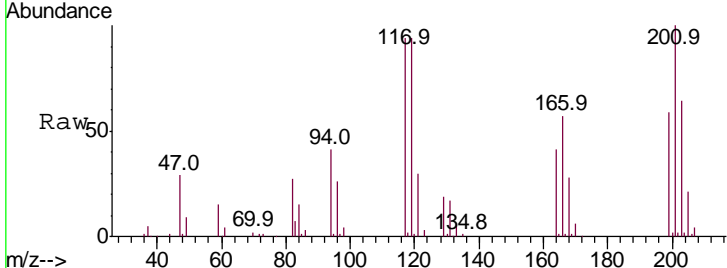




#17
 Hexachloroethane
 Concen: 19.443 ng/ul
 RT: 8.65 min Scan# 962
 Delta R.T. -0.01 min
 Lab File: BM017767.D
 Acq: 28 Nov 2018 09:44

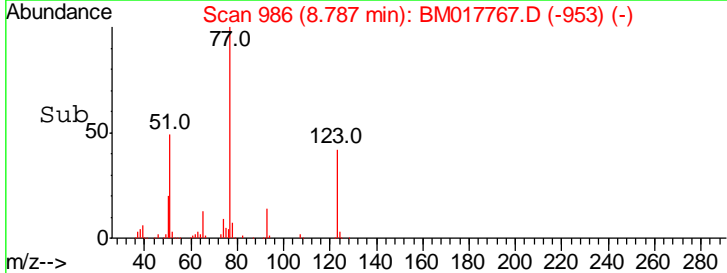
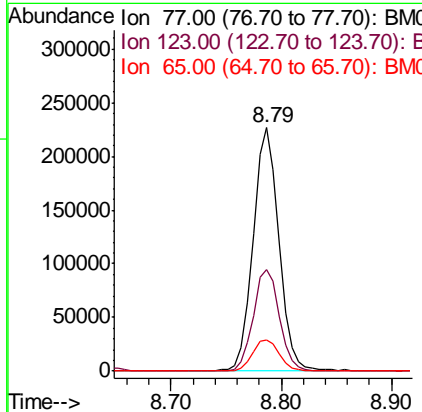
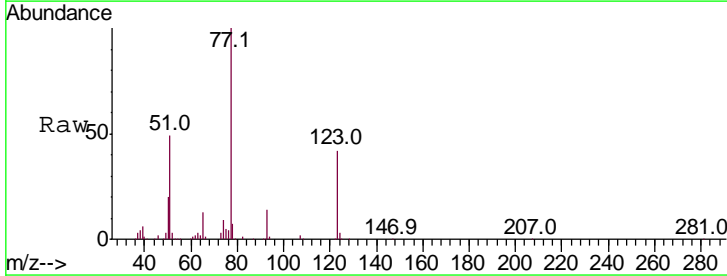
Instrument :
 BNA_M
 ClientSampled :

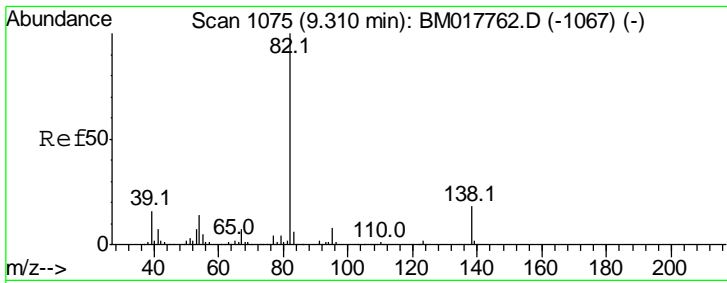
| Tgt Ion | Resp | Lower | Upper |
|---------|-------|-------|-------|
| 117 | 100 | | |
| 201 | 106.5 | 78.2 | 117.2 |
| 199 | 62.8 | 49.5 | 74.3 |



#20
 Nitrobenzene
 Concen: 19.901 ng/ul
 RT: 8.79 min Scan# 986
 Delta R.T. -0.01 min
 Lab File: BM017767.D
 Acq: 28 Nov 2018 09:44

| Tgt Ion | Resp | Lower | Upper |
|---------|------|-------|-------|
| 77 | 100 | | |
| 123 | 41.7 | 33.1 | 49.7 |
| 65 | 13.0 | 11.0 | 16.6 |

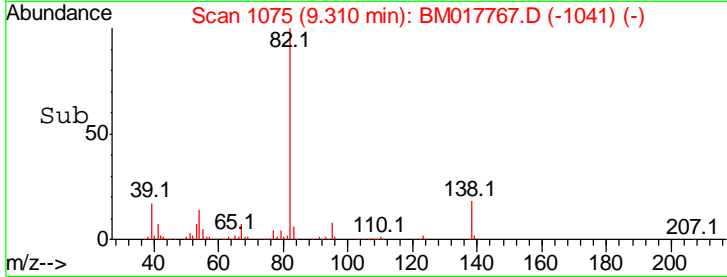
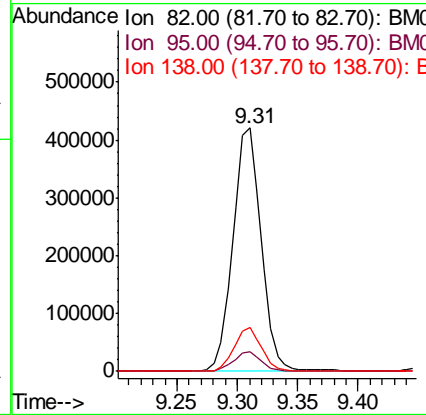
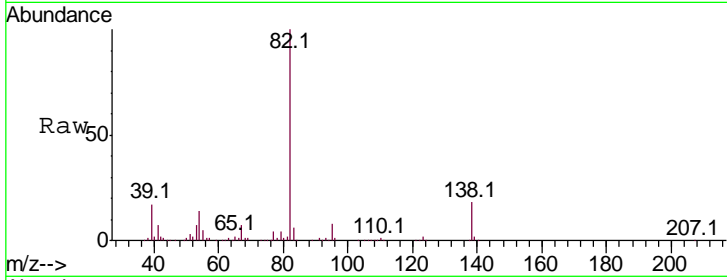




#21
 Isophorone
 Concen: 19.694 ng/ul
 RT: 9.31 min Scan# 1075
 Delta R.T. -0.00 min
 Lab File: BM017767.D
 Acq: 28 Nov 2018 09:44

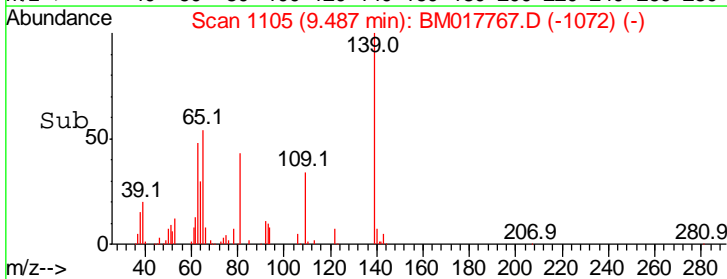
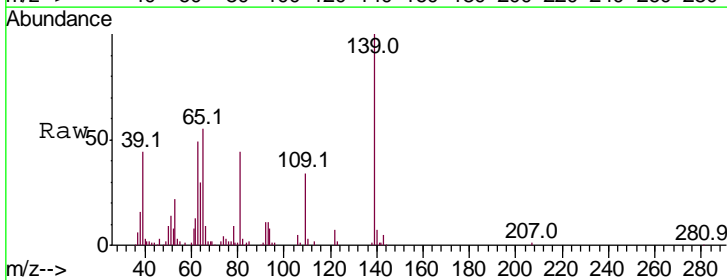
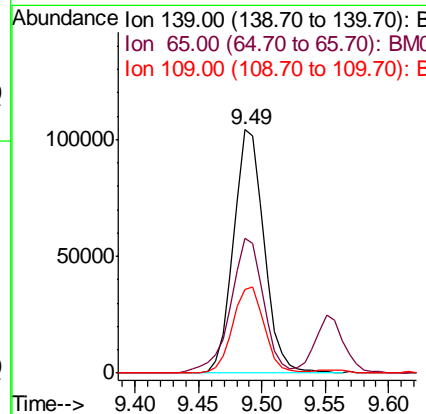
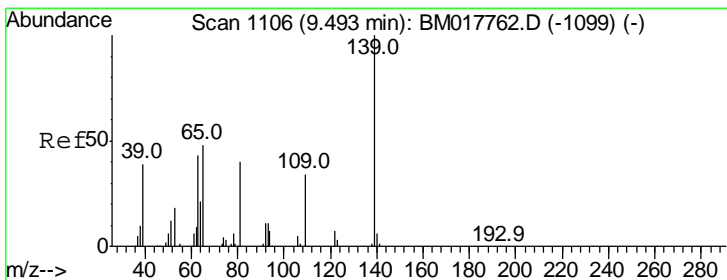
Instrument :
 BNA_M
 ClientSampled :

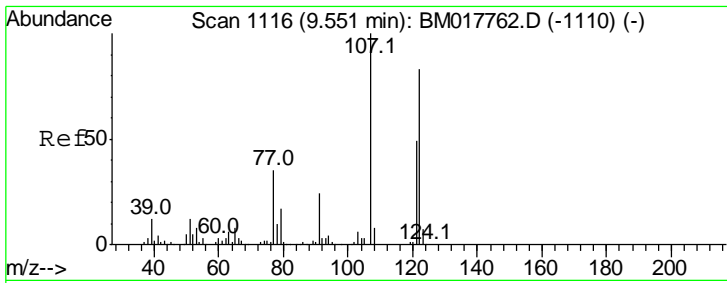
| Tgt Ion | Resp | Lower | Upper |
|---------|--------|-------|-------|
| 82 | 687333 | | |
| 95 | 7.9 | 6.1 | 9.1 |
| 138 | 18.0 | 14.2 | 21.2 |



#23
 2-Nitrophenol
 Concen: 19.500 ng/ul
 RT: 9.49 min Scan# 1105
 Delta R.T. -0.01 min
 Lab File: BM017767.D
 Acq: 28 Nov 2018 09:44

| Tgt Ion | Resp | Lower | Upper |
|---------|--------|-------|-------|
| 139 | 173800 | | |
| 65 | 55.5 | 44.2 | 66.4 |
| 109 | 34.2 | 26.4 | 39.6 |

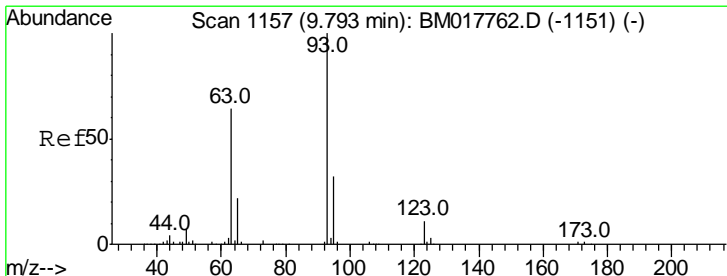
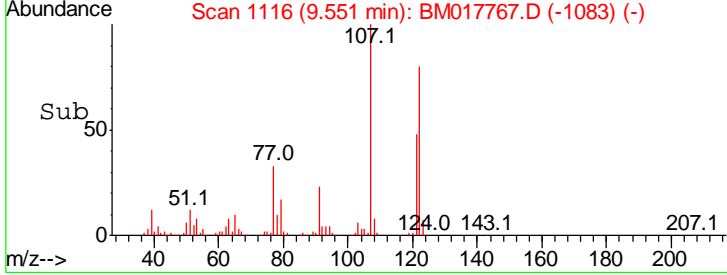
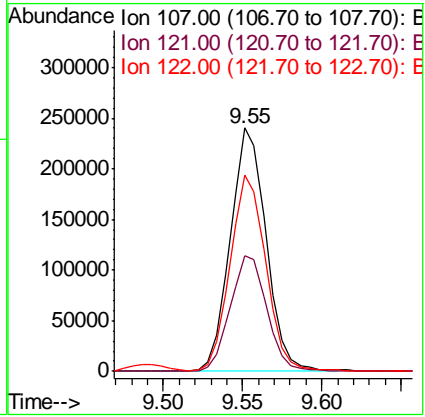
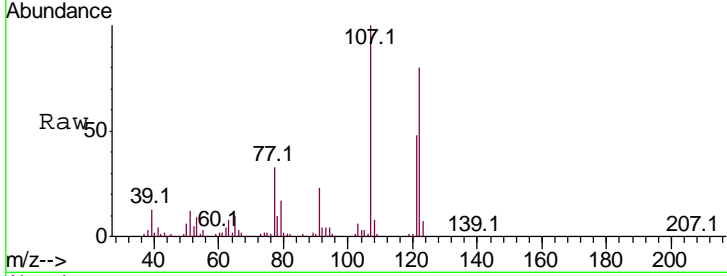




#24
 2,4-Dimethylphenol
 Concen: 20.186 ng/ul
 RT: 9.55 min Scan# 1116
 Delta R.T. -0.01 min
 Lab File: BM017767.D
 Acq: 28 Nov 2018 09:44

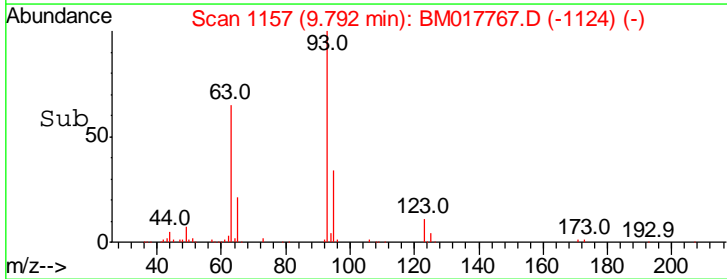
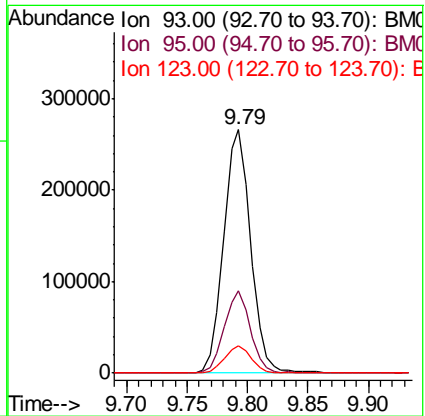
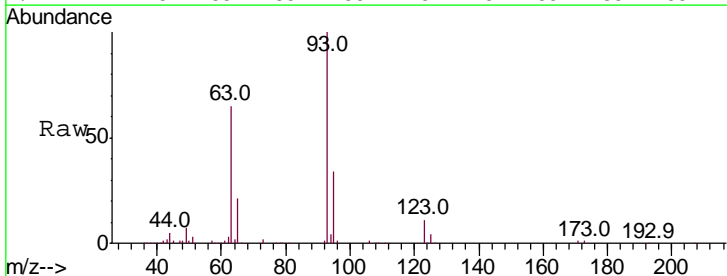
Instrument :
 BNA_M
 ClientSampled :

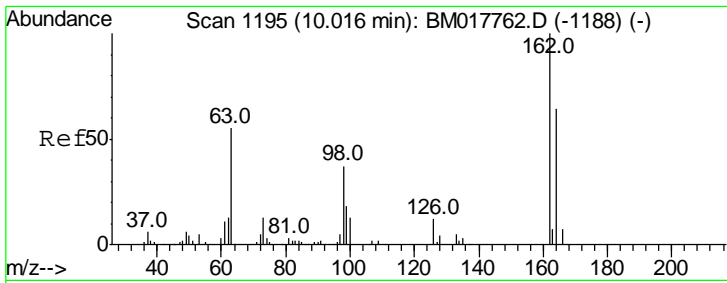
| Tgt Ion | Resp | Lower | Upper |
|---------|------|-------|-------|
| 107 | 100 | | |
| 121 | 47.7 | 39.6 | 59.4 |
| 122 | 80.4 | 68.1 | 102.1 |



#25
 Bis(2-Chloroethoxy)methane
 Concen: 19.353 ng/ul
 RT: 9.79 min Scan# 1157
 Delta R.T. -0.01 min
 Lab File: BM017767.D
 Acq: 28 Nov 2018 09:44

| Tgt Ion | Resp | Lower | Upper |
|---------|------|-------|-------|
| 93 | 100 | | |
| 95 | 33.9 | 26.0 | 39.0 |
| 123 | 11.1 | 9.0 | 13.4 |

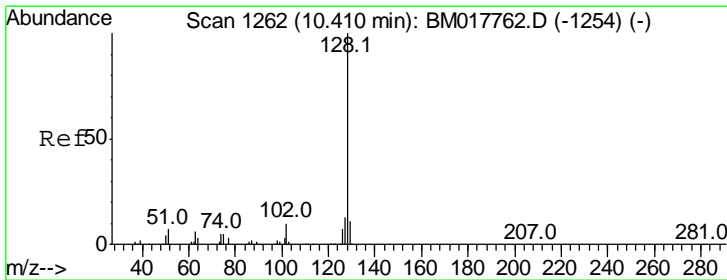
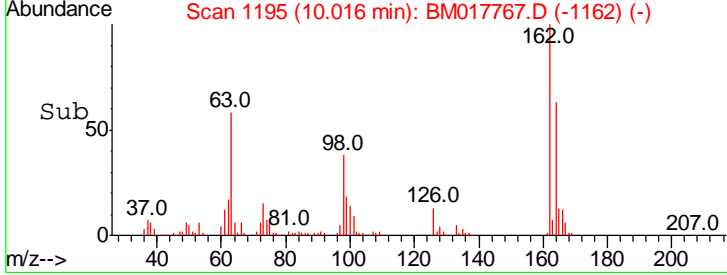
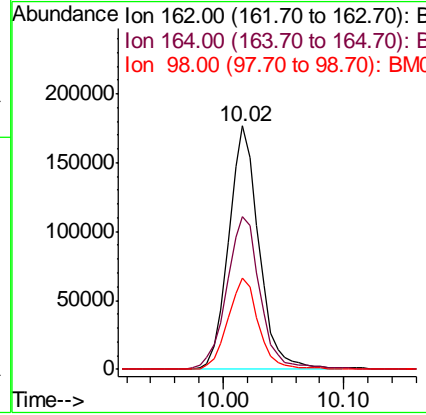
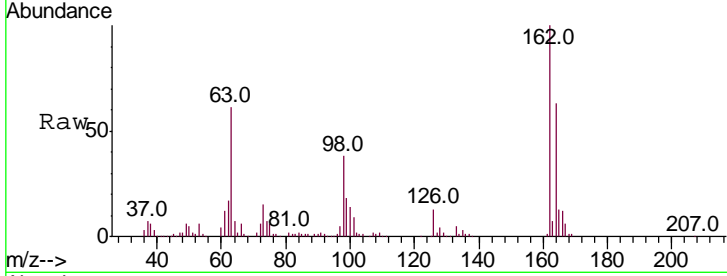




#27
 2,4-Dichlorophenol
 Concen: 19.978 ng/ul
 RT: 10.02 min Scan# 1195
 Delta R.T. -0.01 min
 Lab File: BM017767.D
 Acq: 28 Nov 2018 09:44

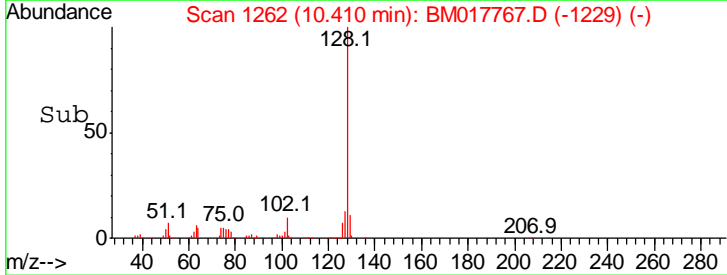
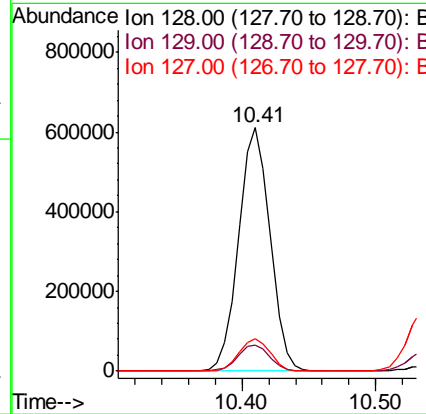
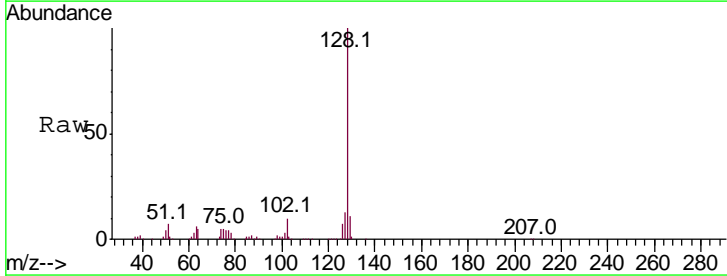
Instrument :
 BNA_M
 ClientSampled :

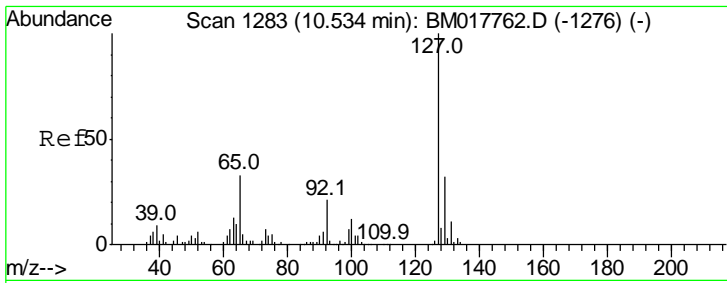
| Tgt Ion | Resp | Lower | Upper |
|---------|------|-------|-------|
| 162 | 100 | | |
| 164 | 62.9 | 51.8 | 77.8 |
| 98 | 37.6 | 29.0 | 43.6 |



#28
 Naphthalene
 Concen: 19.619 ng/ul
 RT: 10.41 min Scan# 1262
 Delta R.T. -0.01 min
 Lab File: BM017767.D
 Acq: 28 Nov 2018 09:44

| Tgt Ion | Resp | Lower | Upper |
|---------|------|-------|-------|
| 128 | 100 | | |
| 129 | 10.6 | 8.6 | 12.8 |
| 127 | 13.2 | 10.8 | 16.2 |

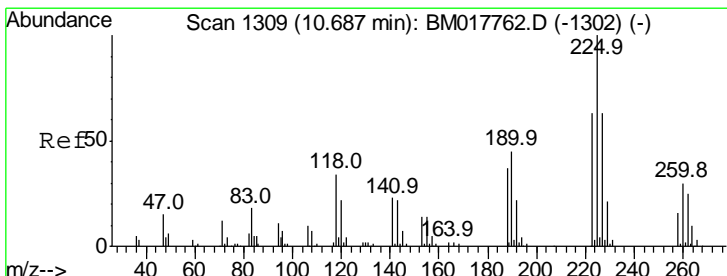
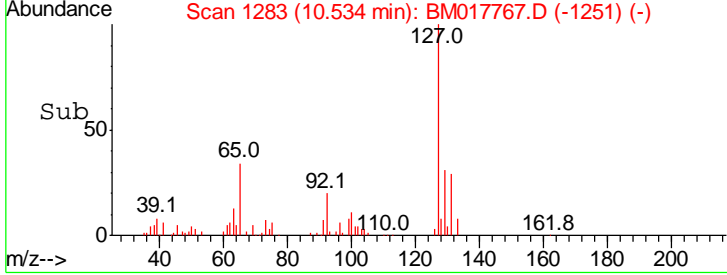
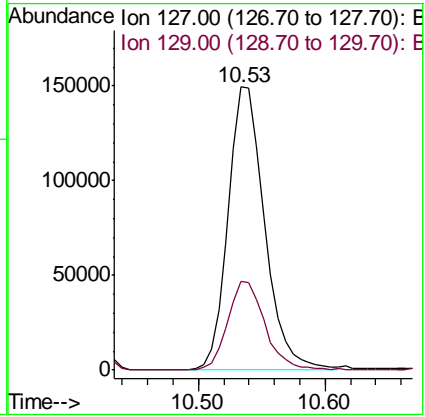
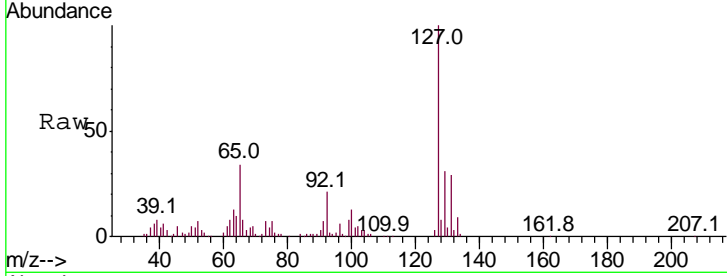




#30
 4-Chloroaniline
 Concen: 20.990 ng/ul
 RT: 10.53 min Scan# 1283
 Delta R.T. -0.01 min
 Lab File: BM017767.D
 Acq: 28 Nov 2018 09:44

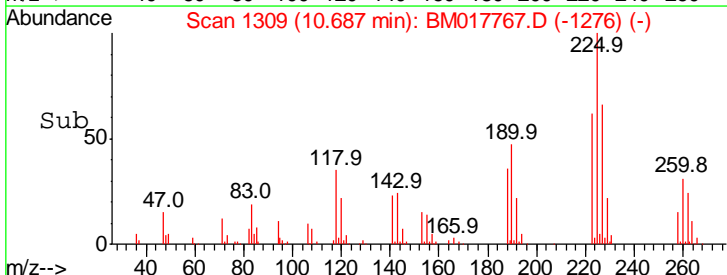
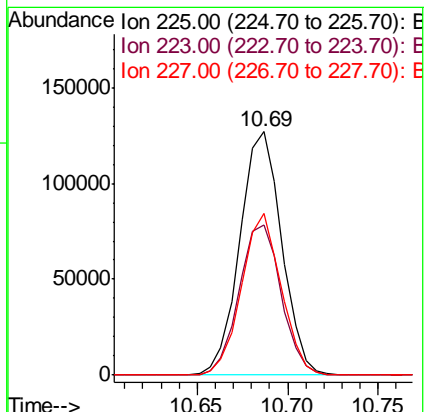
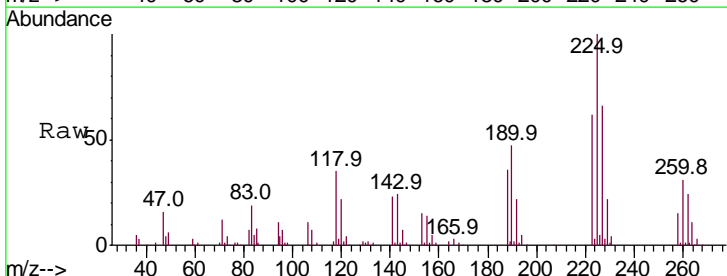
Instrument :
 BNA_M
 ClientSampled :

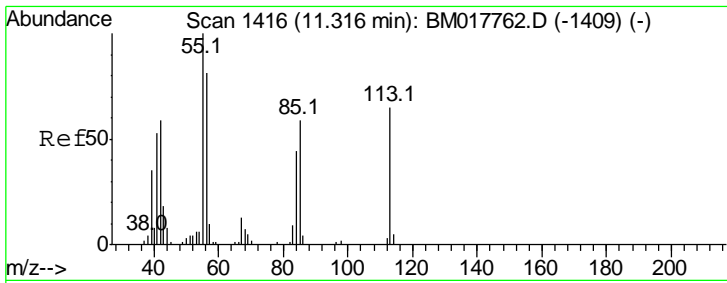
| Tgt Ion | Resp | Lower | Upper |
|---------|------|-------|-------|
| 127 | 100 | | |
| 129 | 31.4 | 24.6 | 37.0 |



#31
 Hexachlorobutadiene
 Concen: 19.954 ng/ul
 RT: 10.69 min Scan# 1309
 Delta R.T. -0.01 min
 Lab File: BM017767.D
 Acq: 28 Nov 2018 09:44

| Tgt Ion | Resp | Lower | Upper |
|---------|------|-------|-------|
| 225 | 100 | | |
| 223 | 61.8 | 48.8 | 73.2 |
| 227 | 66.3 | 50.3 | 75.5 |

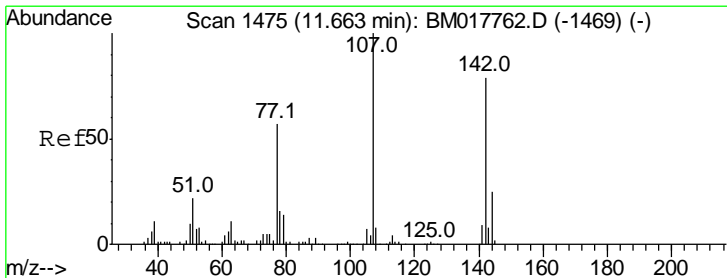
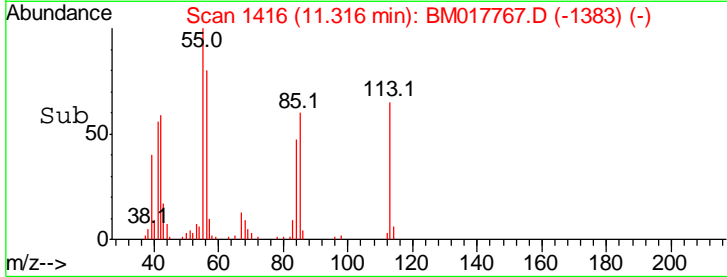
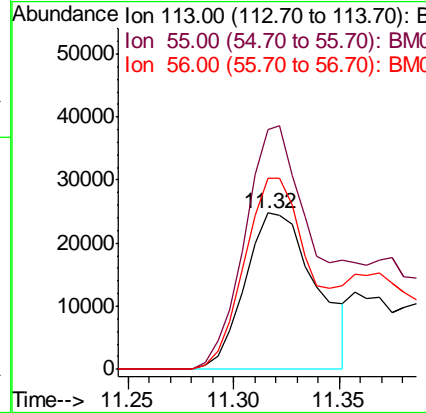
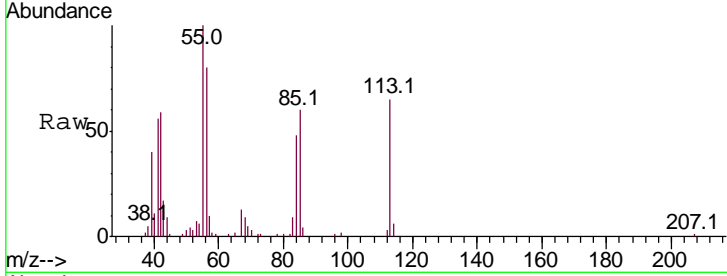




#32
 Caprolactam
 Concen: 11.327 ng/ul
 RT: 11.32 min Scan# 1416
 Delta R.T. -0.01 min
 Lab File: BM017767.D
 Acq: 28 Nov 2018 09:44

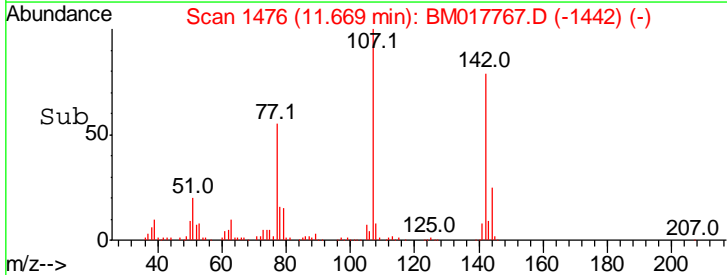
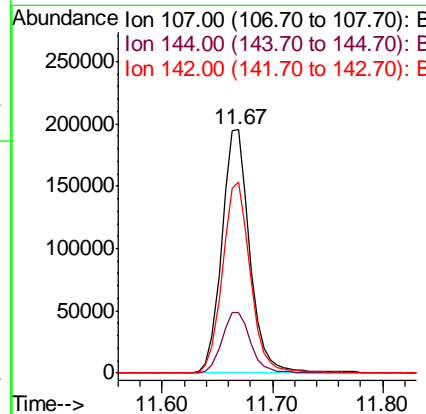
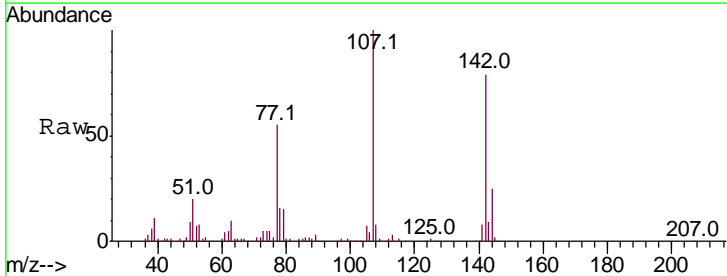
Instrument :
 BNA_M
 ClientSampled :

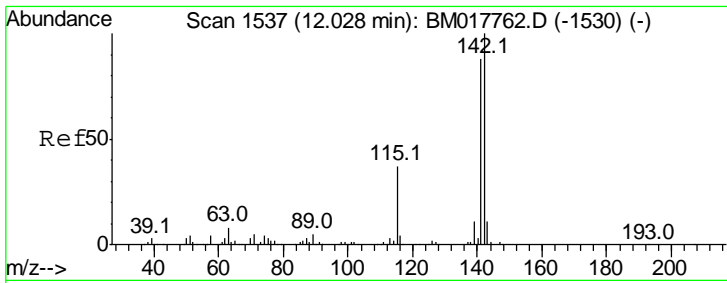
| Tgt Ion | Resp | Lower | Upper |
|---------|-------|-------|-------|
| 113 | 57690 | | |
| 55 | 153.6 | 110.6 | 166.0 |
| 56 | 122.7 | 88.2 | 132.4 |



#33
 4-Chloro-3-methylphenol
 Concen: 19.777 ng/ul
 RT: 11.67 min Scan# 1476
 Delta R.T. -0.00 min
 Lab File: BM017767.D
 Acq: 28 Nov 2018 09:44

| Tgt Ion | Resp | Lower | Upper |
|---------|--------|-------|-------|
| 107 | 345770 | | |
| 144 | 25.1 | 21.1 | 31.7 |
| 142 | 78.5 | 63.0 | 94.6 |

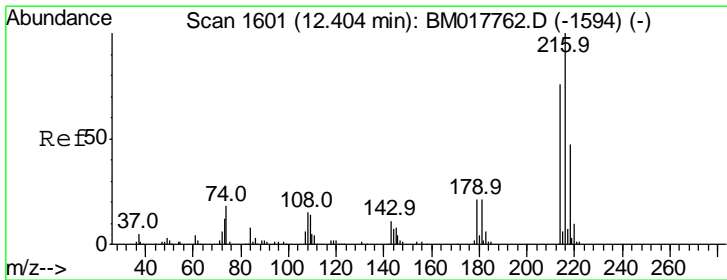
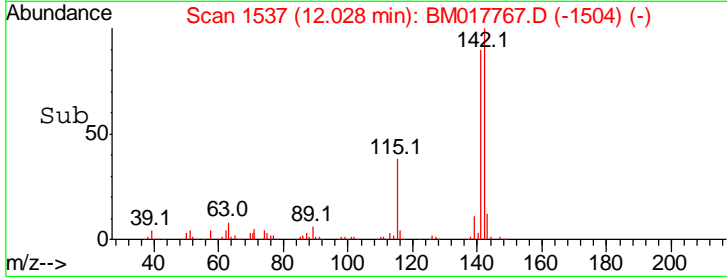
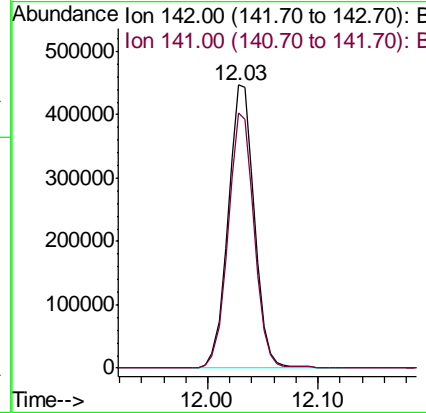
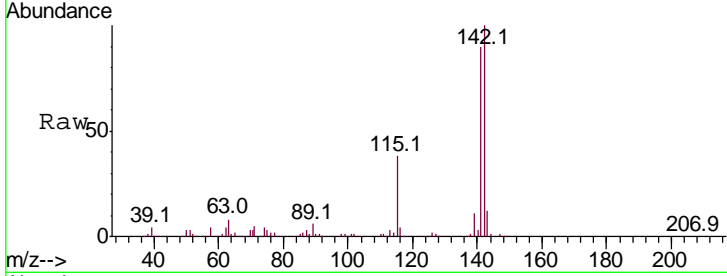




#34
 2-Methylnaphthalene
 Concen: 19.667 ng/ul
 RT: 12.03 min Scan# 1537
 Delta R.T. -0.01 min
 Lab File: BM017767.D
 Acq: 28 Nov 2018 09:44

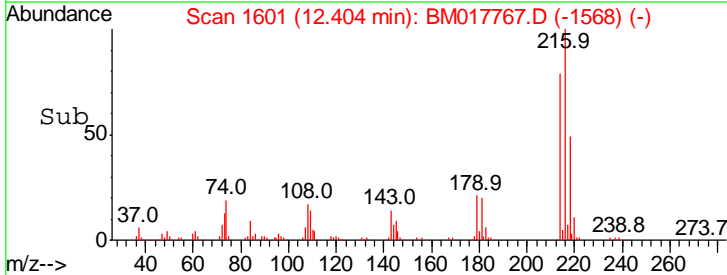
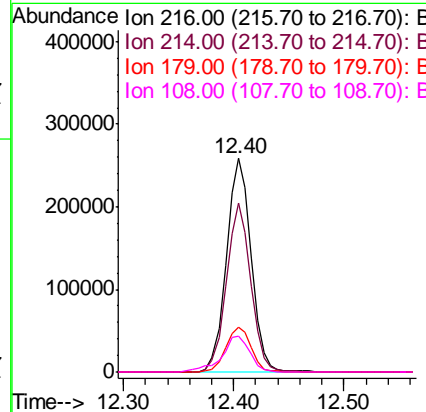
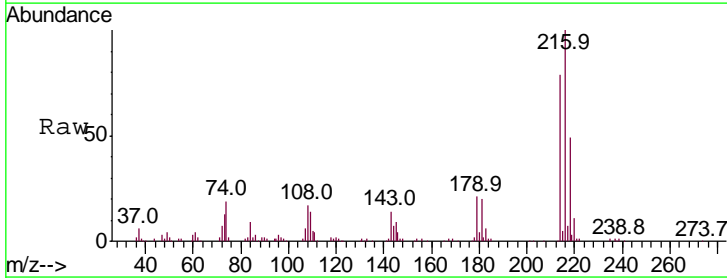
Instrument :
 BNA_M
 ClientSampled :

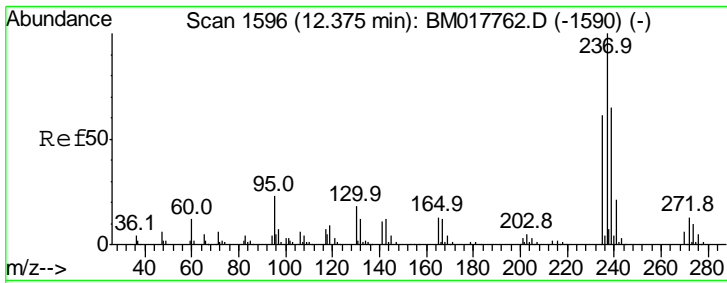
| Tgt Ion | Resp | Lower | Upper |
|---------|------|-------|-------|
| 142 | 100 | | |
| 141 | 90.0 | 72.6 | 108.8 |



#36
 1,2,4,5-Tetrachlorobenzene
 Concen: 19.778 ng/ul
 RT: 12.40 min Scan# 1601
 Delta R.T. -0.01 min
 Lab File: BM017767.D
 Acq: 28 Nov 2018 09:44

| Tgt Ion | Resp | Lower | Upper |
|---------|------|-------|-------|
| 216 | 100 | | |
| 214 | 78.9 | 61.3 | 91.9 |
| 179 | 20.9 | 17.0 | 25.4 |
| 108 | 16.6 | 12.8 | 19.2 |

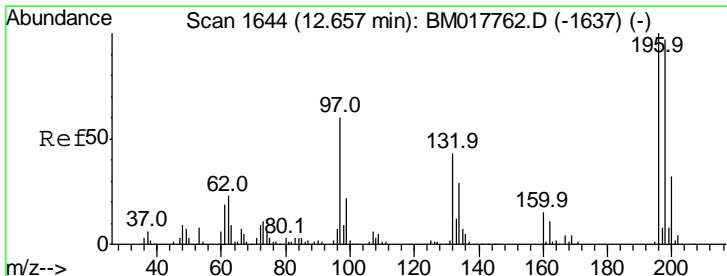
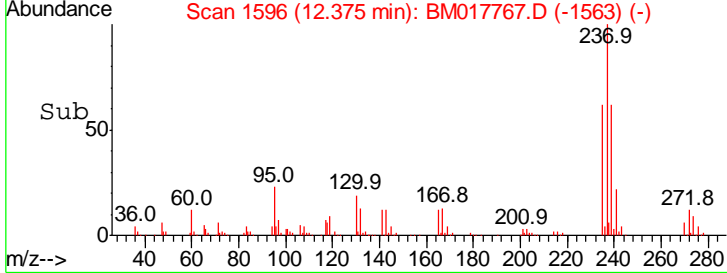
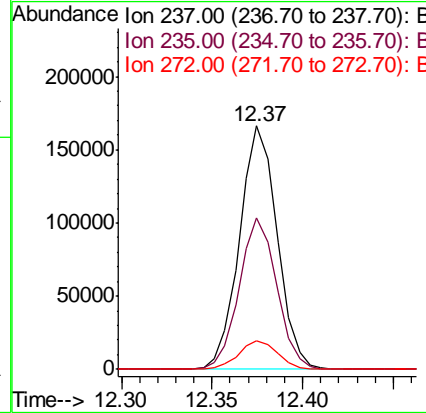
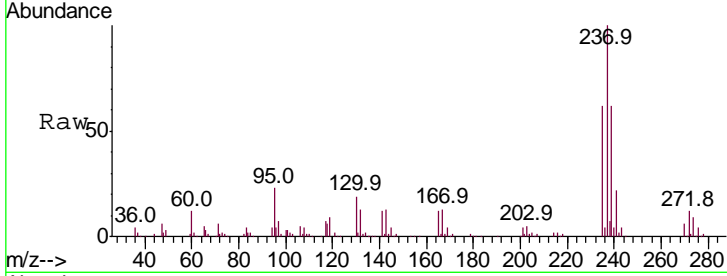




#37
 Hexachlorocyclopentadiene
 Concen: 18.303 ng/ul
 RT: 12.37 min Scan# 1596
 Delta R.T. -0.01 min
 Lab File: BM017767.D
 Acq: 28 Nov 2018 09:44

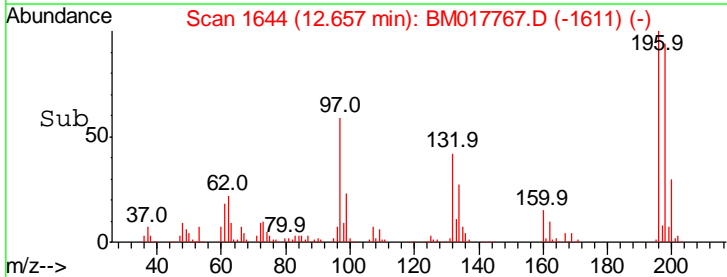
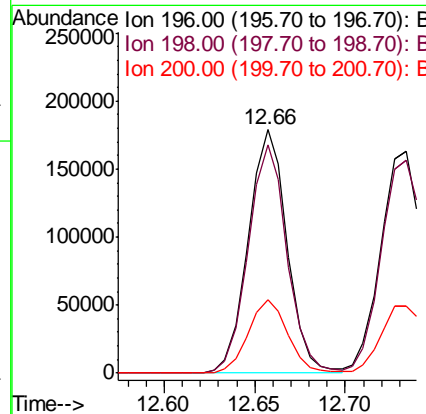
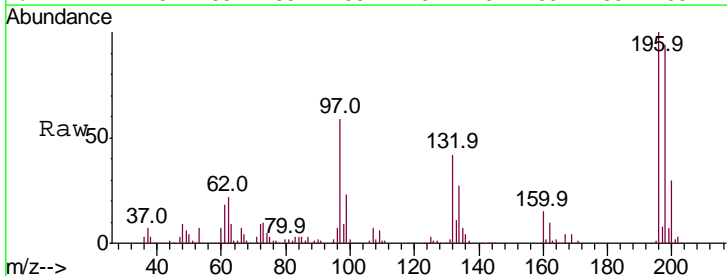
Instrument :
 BNA_M
 ClientSampled :

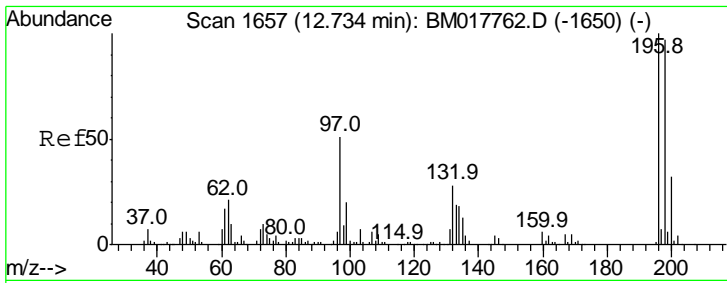
| Tgt Ion | Resp | Lower | Upper |
|---------|--------|-------|-------|
| 237 | 240721 | | |
| 235 | 62.3 | 48.6 | 73.0 |
| 272 | 12.2 | 9.4 | 14.0 |



#38
 2,4,6-Trichlorophenol
 Concen: 20.107 ng/ul
 RT: 12.66 min Scan# 1644
 Delta R.T. -0.01 min
 Lab File: BM017767.D
 Acq: 28 Nov 2018 09:44

| Tgt Ion | Resp | Lower | Upper |
|---------|--------|-------|-------|
| 196 | 266506 | | |
| 198 | 93.8 | 74.9 | 112.3 |
| 200 | 30.0 | 25.4 | 38.2 |

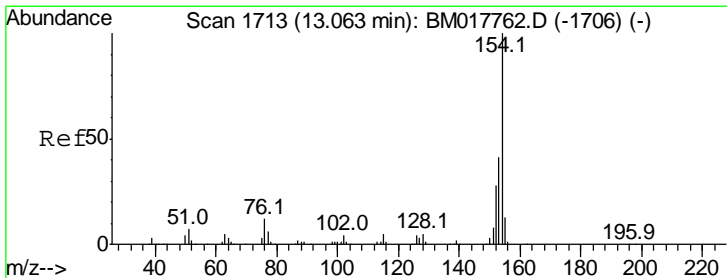
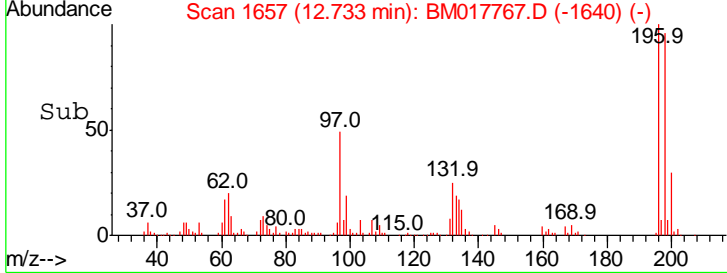
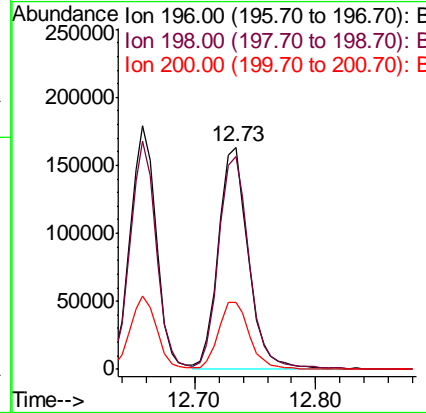
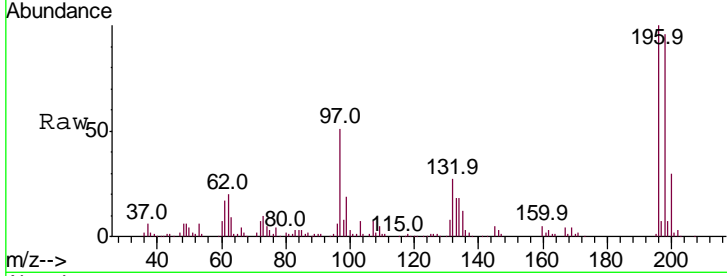




#39
 2,4,5-Trichlorophenol
 Concen: 19.568 ng/ul
 RT: 12.73 min Scan# 1657
 Delta R.T. -0.00 min
 Lab File: BM017767.D
 Acq: 28 Nov 2018 09:44

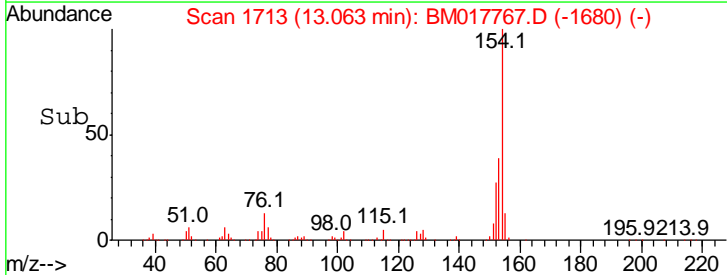
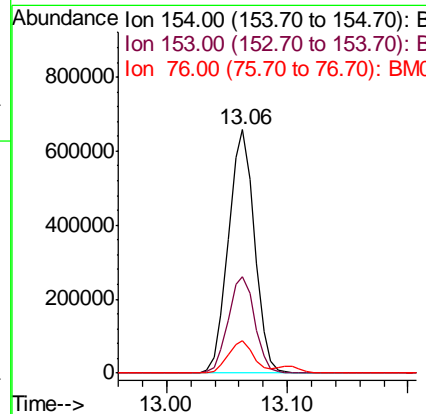
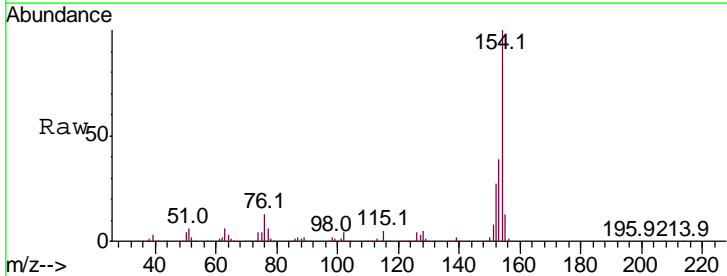
Instrument :
 BNA_M
 ClientSampled :

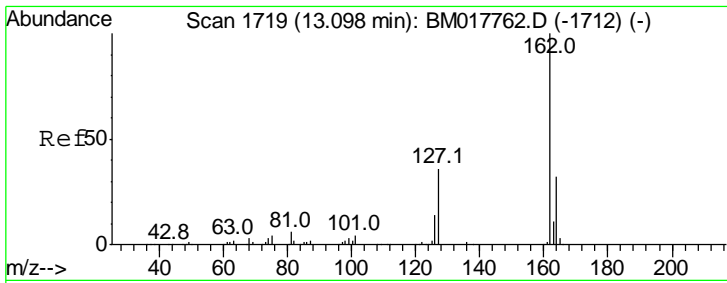
| Tgt Ion | Resp | Lower | Upper |
|---------|------|-------|-------|
| 196 | 100 | | |
| 198 | 95.7 | 77.2 | 115.8 |
| 200 | 30.2 | 25.8 | 38.8 |



#40
 1,1'-Biphenyl
 Concen: 19.538 ng/ul
 RT: 13.06 min Scan# 1713
 Delta R.T. -0.01 min
 Lab File: BM017767.D
 Acq: 28 Nov 2018 09:44

| Tgt Ion | Resp | Lower | Upper |
|---------|------|-------|-------|
| 154 | 100 | | |
| 153 | 39.4 | 32.5 | 48.7 |
| 76 | 13.4 | 10.6 | 15.8 |

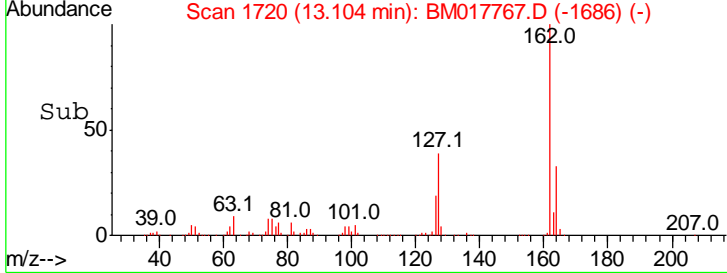
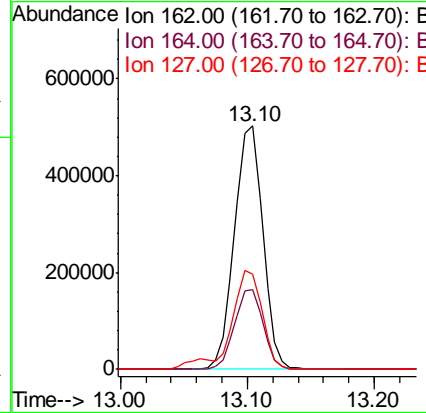
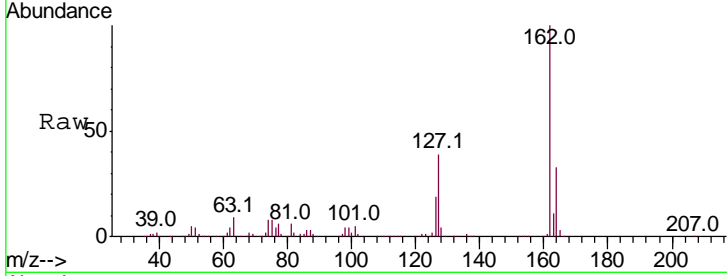




#41
 2-Chloronaphthalene
 Concen: 19.852 ng/ul
 RT: 13.10 min Scan# 1720
 Delta R.T. -0.00 min
 Lab File: BM017767.D
 Acq: 28 Nov 2018 09:44

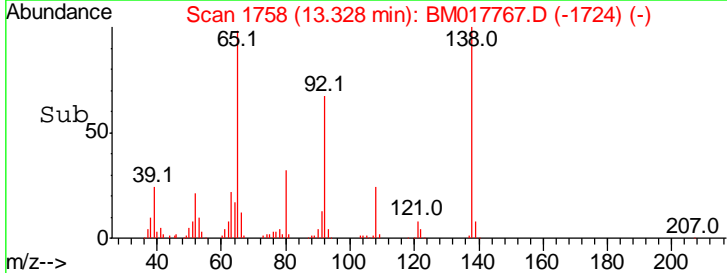
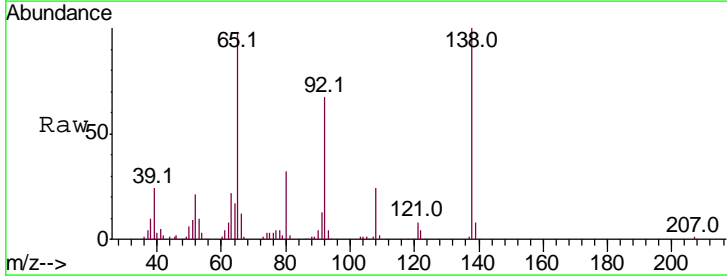
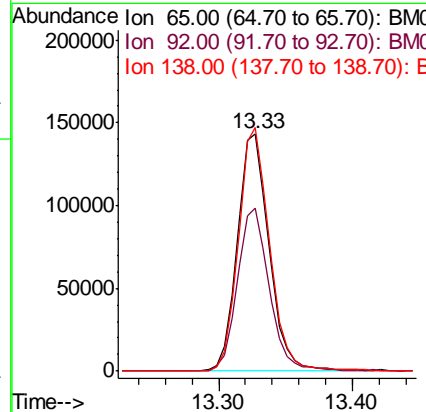
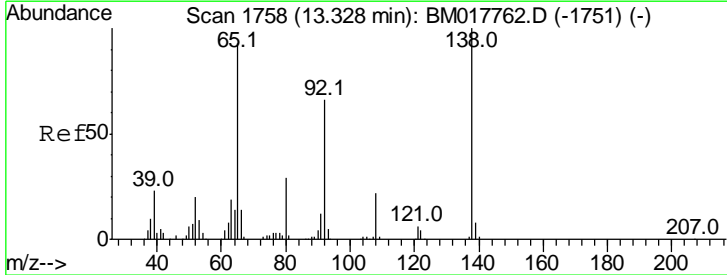
Instrument :
 BNA_M
 ClientSampled :

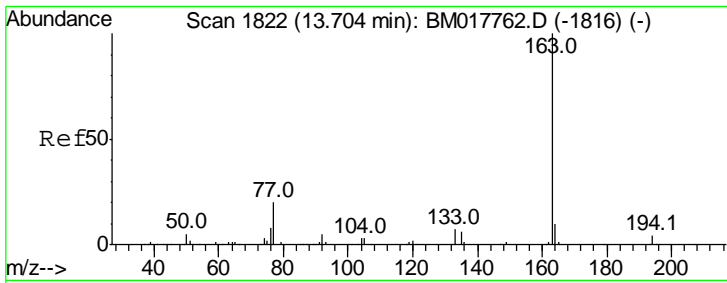
| Tgt Ion | Resp | Lower | Upper |
|---------|--------|-------|-------|
| 162 | 781338 | | |
| 162 | 100 | | |
| 164 | 32.8 | 26.1 | 39.1 |
| 127 | 38.9 | 31.8 | 47.8 |



#42
 2-Nitroaniline
 Concen: 20.638 ng/ul
 RT: 13.33 min Scan# 1758
 Delta R.T. -0.00 min
 Lab File: BM017767.D
 Acq: 28 Nov 2018 09:44

| Tgt Ion | Resp | Lower | Upper |
|---------|--------|-------|-------|
| 65 | 236536 | | |
| 65 | 100 | | |
| 92 | 68.5 | 56.3 | 84.5 |
| 138 | 102.5 | 85.4 | 128.0 |



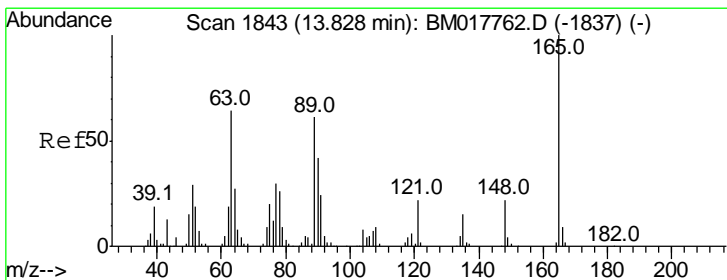
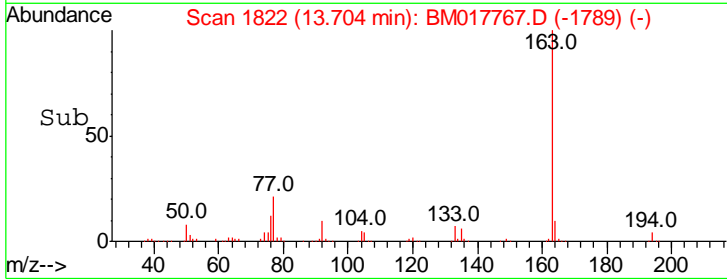
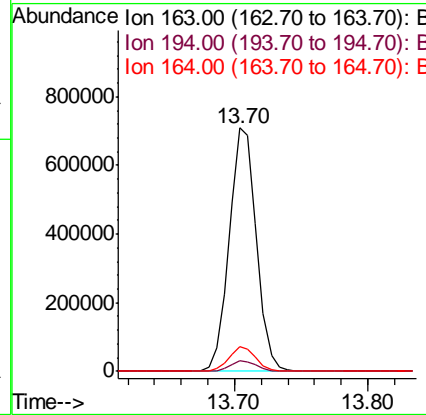
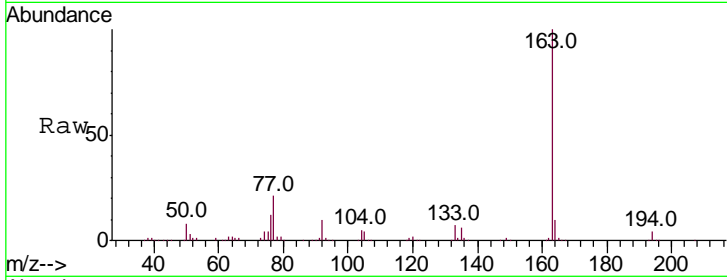


#44
 Dimethylphthalate
 Concen: 19.635 ng/ul
 RT: 13.70 min Scan# 1822
 Delta R.T. -0.01 min
 Lab File: BM017767.D
 Acq: 28 Nov 2018 09:44

Instrument :
 BNA_M
 ClientSampled :

Tgt Ion:163 Resp: 1008835

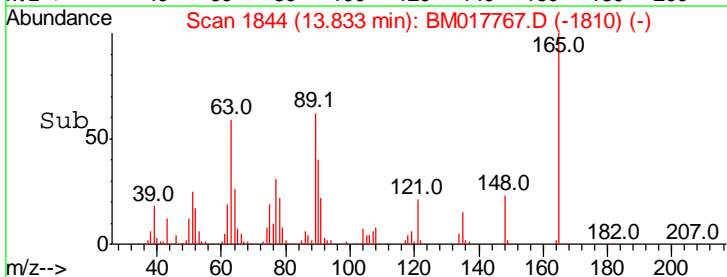
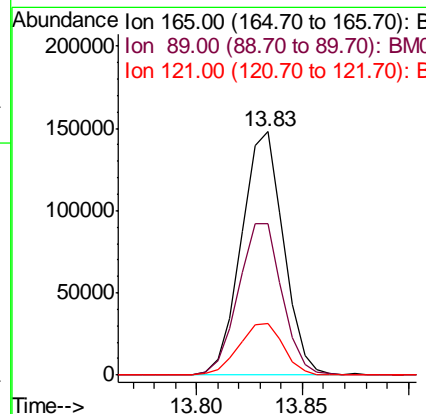
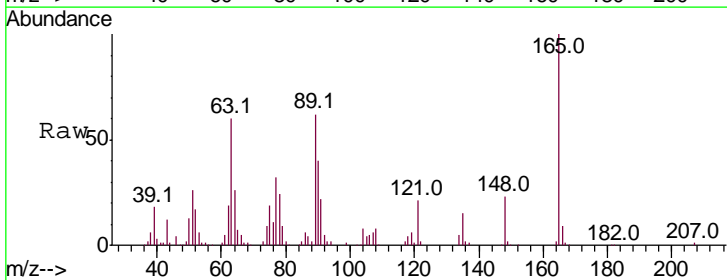
| Ion | Ratio | Lower | Upper |
|-----|-------|-------|-------|
| 163 | 100 | | |
| 194 | 4.2 | 3.4 | 5.0 |
| 164 | 10.2 | 8.1 | 12.1 |

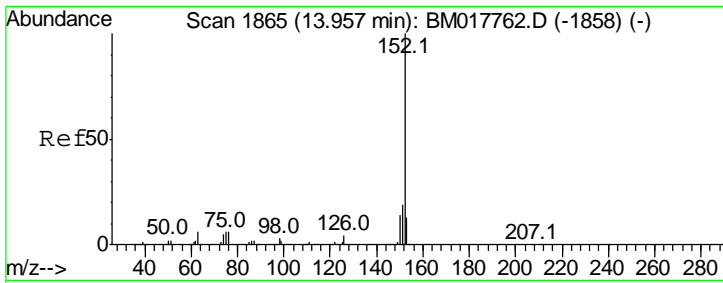


#45
 2,6-Dinitrotoluene
 Concen: 20.297 ng/ul
 RT: 13.83 min Scan# 1844
 Delta R.T. -0.00 min
 Lab File: BM017767.D
 Acq: 28 Nov 2018 09:44

Tgt Ion:165 Resp: 204925

| Ion | Ratio | Lower | Upper |
|-----|-------|-------|-------|
| 165 | 100 | | |
| 89 | 62.3 | 48.0 | 72.0 |
| 121 | 21.0 | 17.0 | 25.6 |

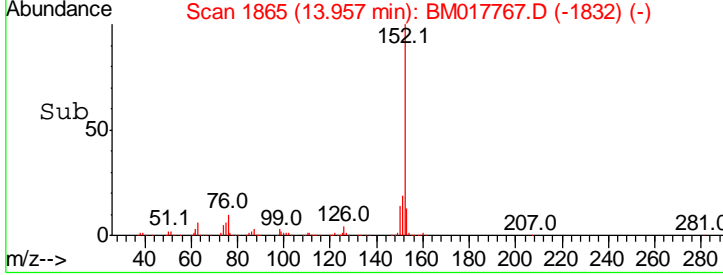
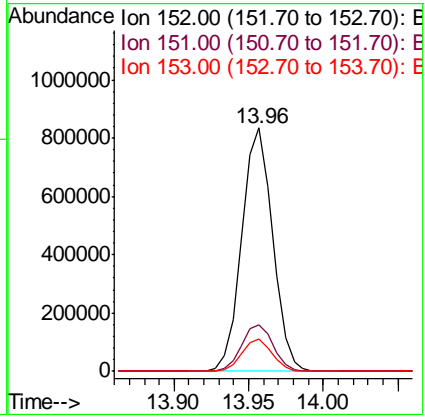
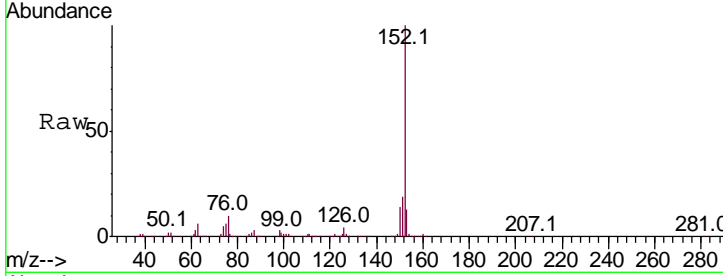




#47
 Acenaphthylene
 Concen: 19.920 ng/ul
 RT: 13.96 min Scan# 1865
 Delta R.T. -0.01 min
 Lab File: BM017767.D
 Acq: 28 Nov 2018 09:44

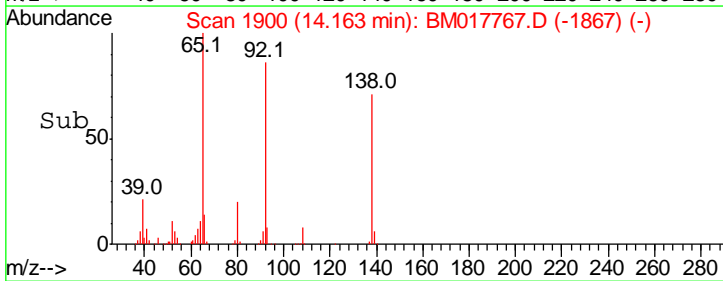
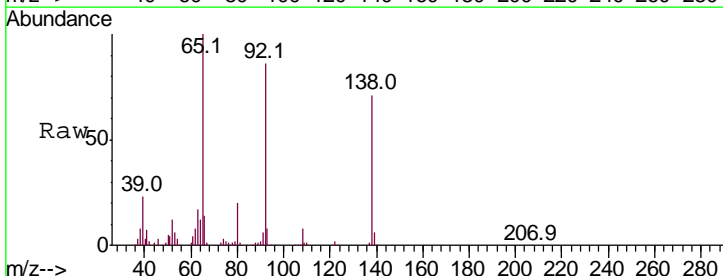
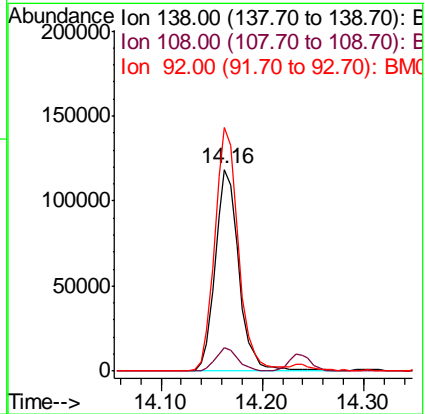
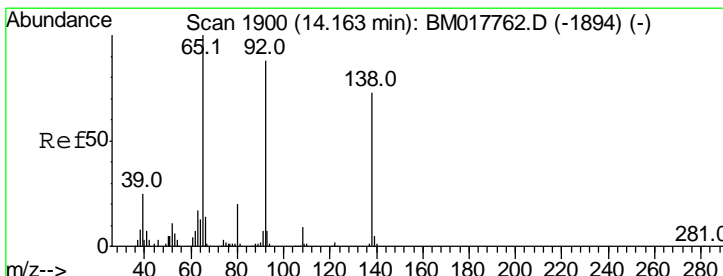
Instrument :
 BNA_M
 ClientSampled :

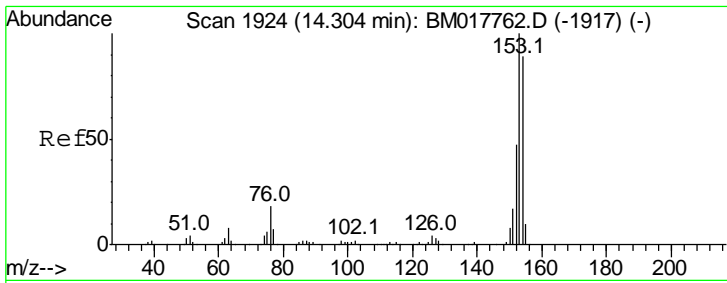
| Tgt Ion | Resp | Lower | Upper |
|---------|---------|-------|-------|
| 152 | 1194035 | | |
| 151 | 19.3 | 16.0 | 24.0 |
| 153 | 13.3 | 10.4 | 15.6 |



#48
 3-Nitroaniline
 Concen: 19.961 ng/ul
 RT: 14.16 min Scan# 1900
 Delta R.T. -0.01 min
 Lab File: BM017767.D
 Acq: 28 Nov 2018 09:44

| Tgt Ion | Resp | Lower | Upper |
|---------|--------|-------|-------|
| 138 | 192259 | | |
| 108 | 11.4 | 9.0 | 13.4 |
| 92 | 120.8 | 98.8 | 148.2 |

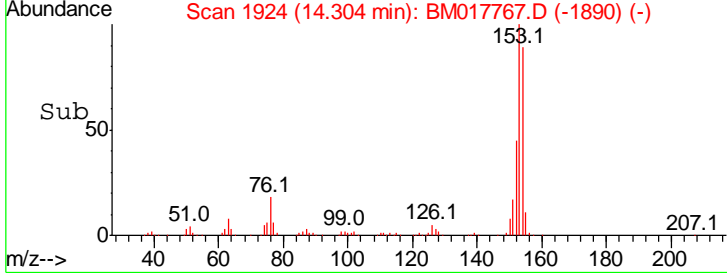
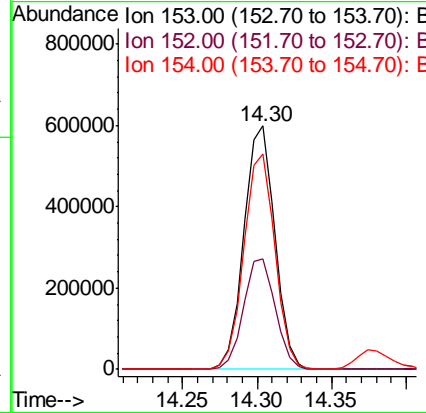
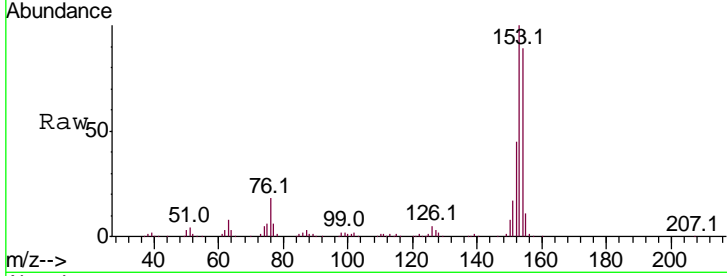




#49
 Acenaphthene
 Concen: 19.932 ng/ul
 RT: 14.30 min Scan# 1924
 Delta R.T. -0.00 min
 Lab File: BM017767.D
 Acq: 28 Nov 2018 09:44

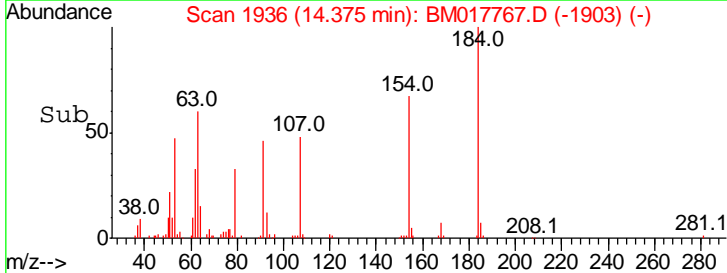
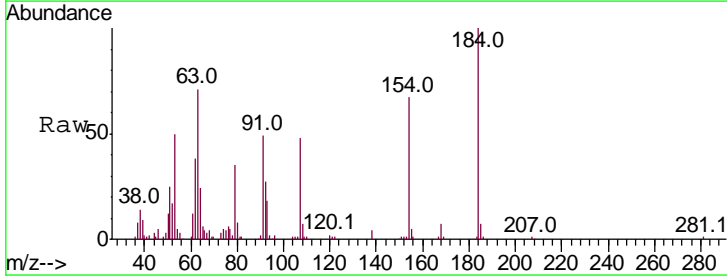
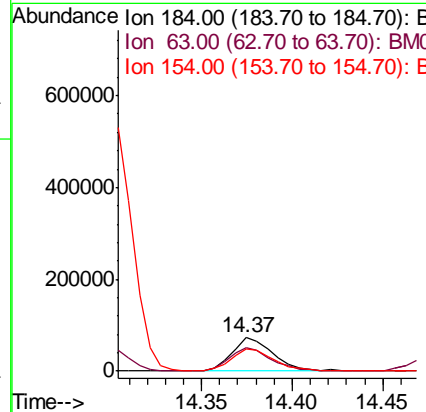
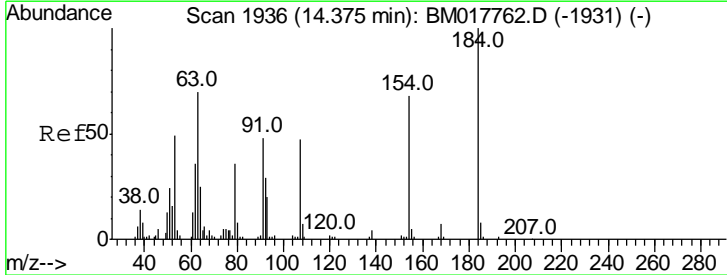
Instrument :
 BNA_M
 ClientSampled :

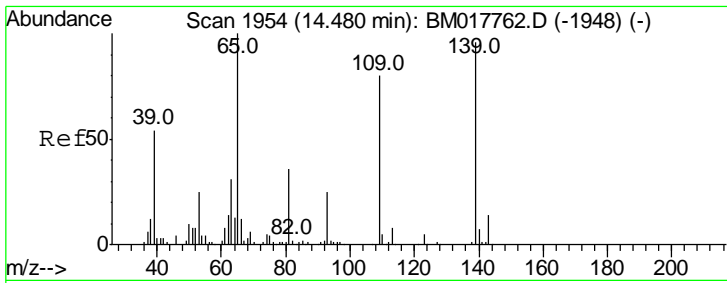
| Tgt Ion | Resp | Lower | Upper |
|---------|------|-------|-------|
| 153 | 100 | | |
| 152 | 45.4 | 37.0 | 55.6 |
| 154 | 88.5 | 70.6 | 106.0 |



#50
 2,4-Dinitrophenol
 Concen: 17.064 ng/ul
 RT: 14.37 min Scan# 1936
 Delta R.T. -0.01 min
 Lab File: BM017767.D
 Acq: 28 Nov 2018 09:44

| Tgt Ion | Resp | Lower | Upper |
|---------|------|-------|-------|
| 184 | 100 | | |
| 63 | 71.3 | 54.4 | 81.6 |
| 154 | 66.7 | 51.1 | 76.7 |

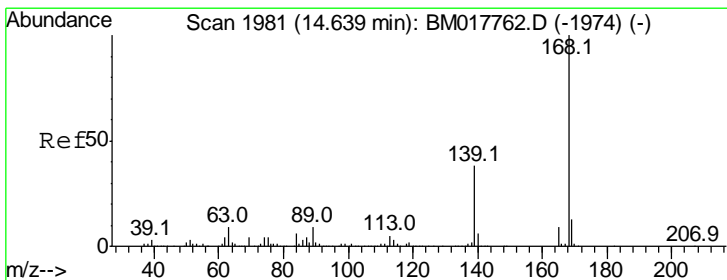
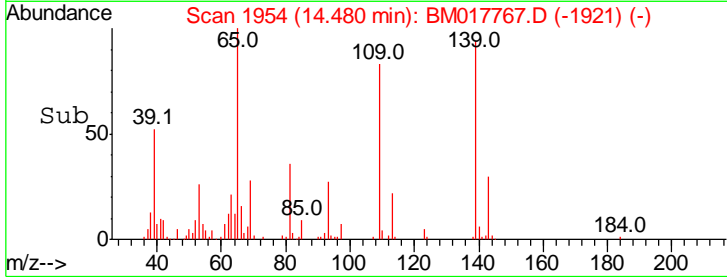
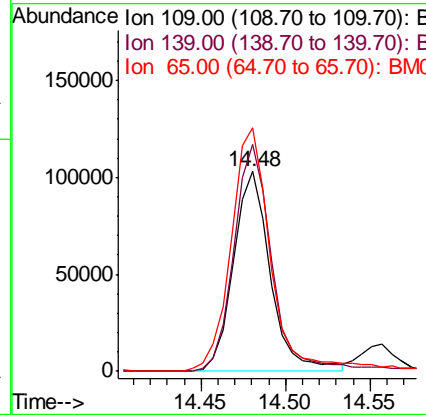
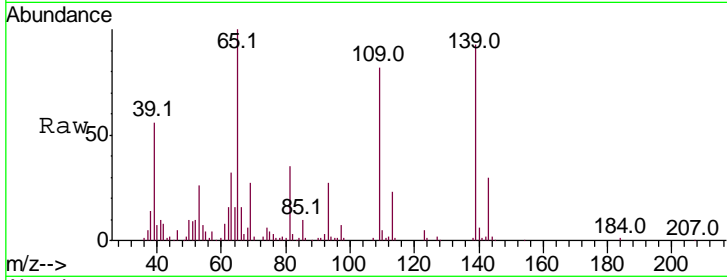




#52
 4-Nitrophenol
 Concen: 19.839 ng/ul
 RT: 14.48 min Scan# 1954
 Delta R.T. -0.01 min
 Lab File: BM017767.D
 Acq: 28 Nov 2018 09:44

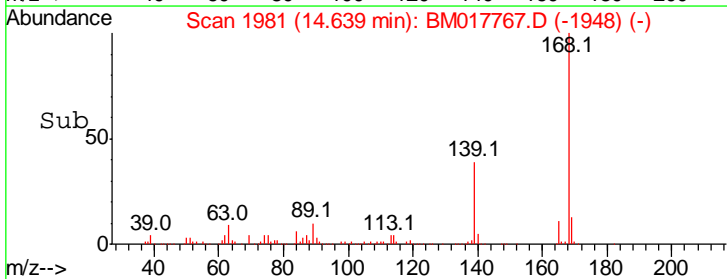
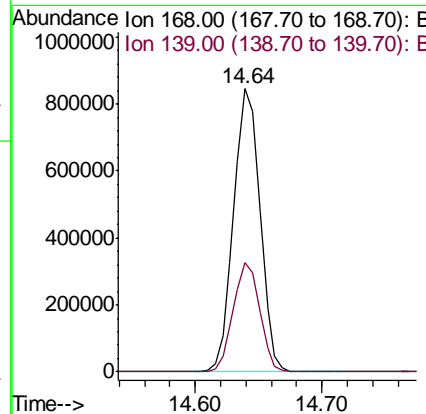
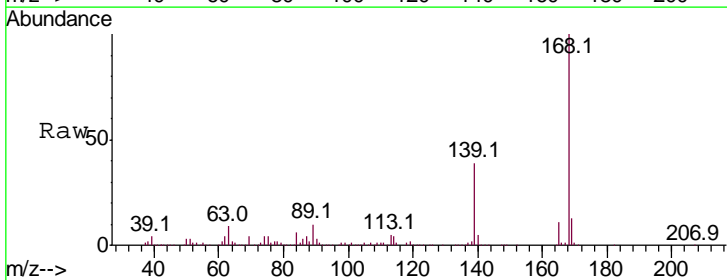
Instrument :
 BNA_M
 ClientSampled :

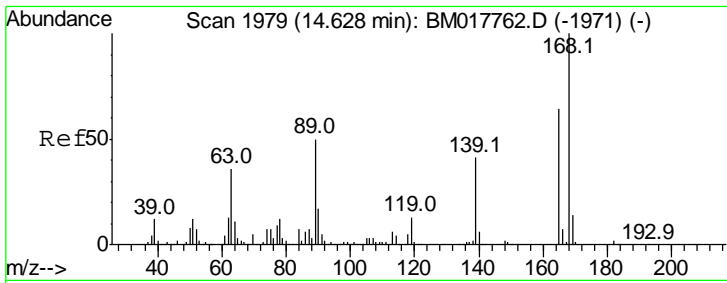
| Tgt Ion | Resp | Lower | Upper |
|---------|--------|-------|-------|
| 109 | 157338 | | |
| 109 | 100 | | |
| 139 | 113.6 | 97.4 | 146.0 |
| 65 | 121.8 | 104.5 | 156.7 |



#53
 Dibenzofuran
 Concen: 19.946 ng/ul
 RT: 14.64 min Scan# 1981
 Delta R.T. -0.01 min
 Lab File: BM017767.D
 Acq: 28 Nov 2018 09:44

| Tgt Ion | Resp | Lower | Upper |
|---------|---------|-------|-------|
| 168 | 1219325 | | |
| 168 | 100 | | |
| 139 | 38.7 | 30.6 | 46.0 |

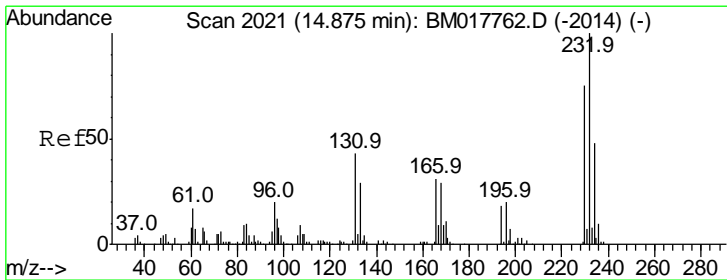
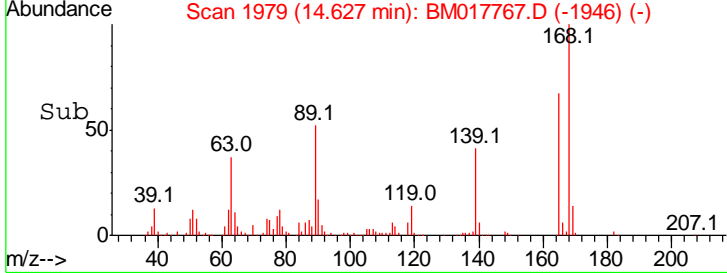
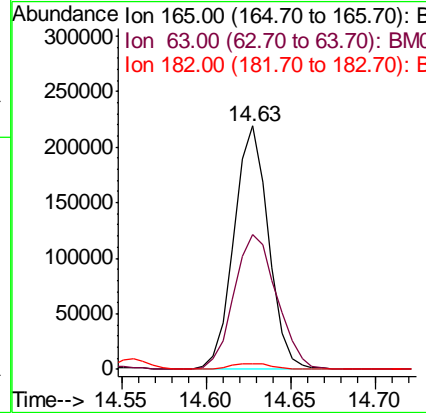
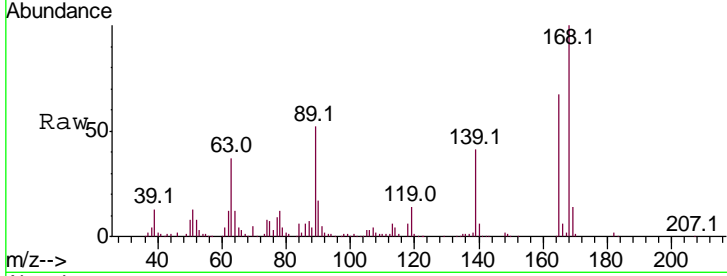




#54
 2,4-Dinitrotoluene
 Concen: 20.369 ng/ul
 RT: 14.63 min Scan# 1979
 Delta R.T. -0.01 min
 Lab File: BM017767.D
 Acq: 28 Nov 2018 09:44

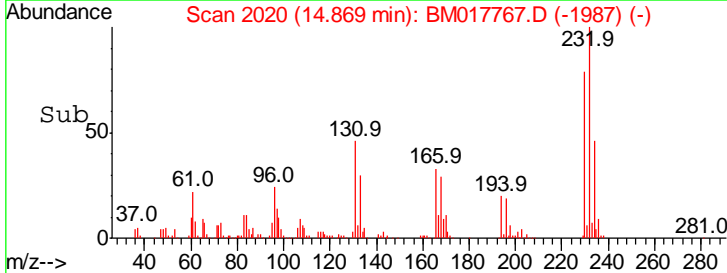
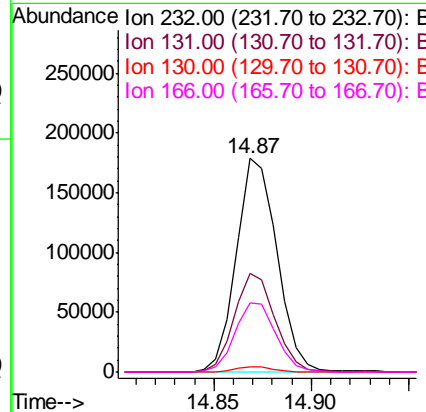
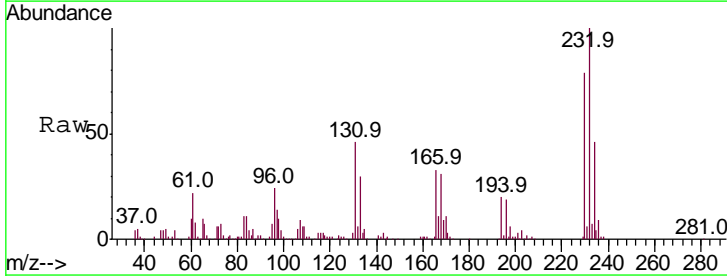
Instrument :
 BNA_M
 ClientSampled :

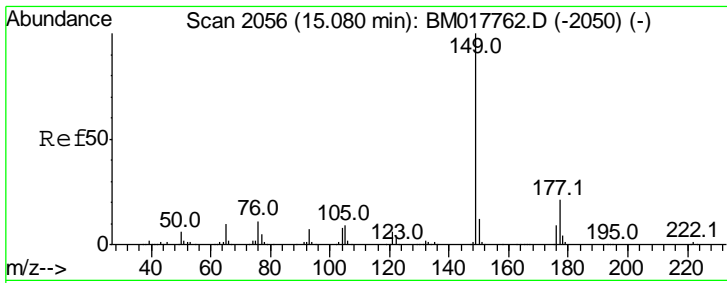
| Tgt Ion | Resp | Lower | Upper |
|---------|------|-------|-------|
| 165 | 100 | | |
| 63 | 55.5 | 41.8 | 62.8 |
| 182 | 2.5 | 2.2 | 3.2 |



#55
 2,3,4,6-Tetrachlorophenol
 Concen: 19.771 ng/ul
 RT: 14.87 min Scan# 2020
 Delta R.T. -0.01 min
 Lab File: BM017767.D
 Acq: 28 Nov 2018 09:44

| Tgt Ion | Resp | Lower | Upper |
|---------|------|-------|-------|
| 232 | 100 | | |
| 131 | 46.4 | 35.5 | 53.3 |
| 130 | 2.7 | 2.1 | 3.1 |
| 166 | 32.6 | 25.4 | 38.2 |

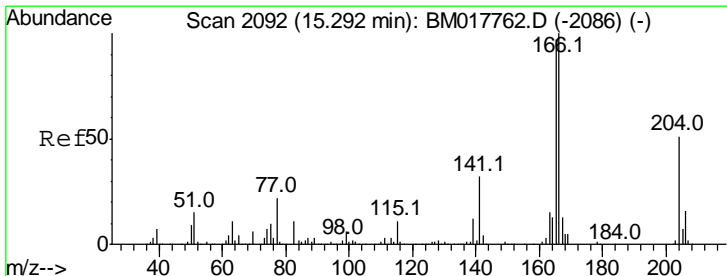
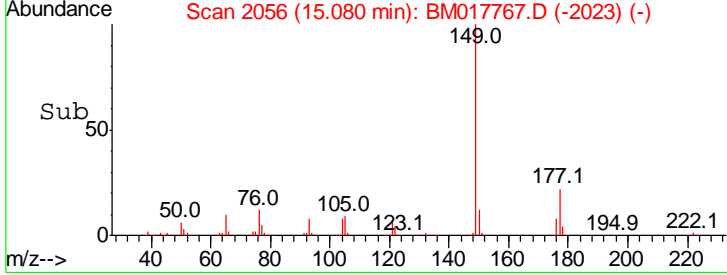
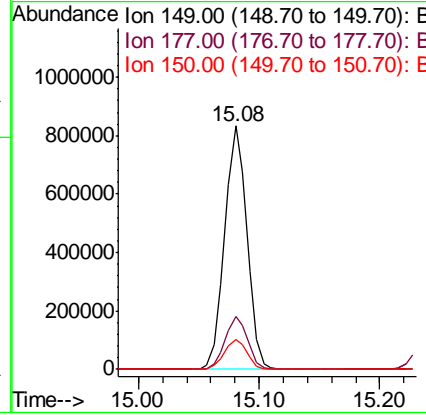
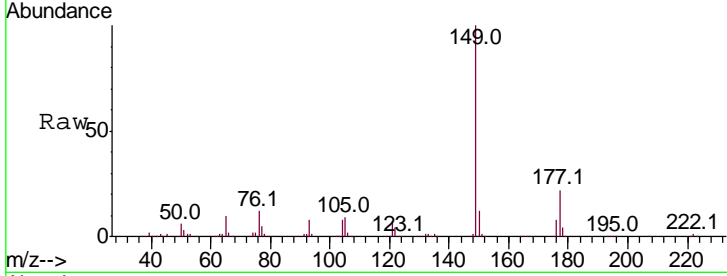




#56
 Diethylphthalate
 Concen: 20.044 ng/ul
 RT: 15.08 min Scan# 2056
 Delta R.T. -0.01 min
 Lab File: BM017767.D
 Acq: 28 Nov 2018 09:44

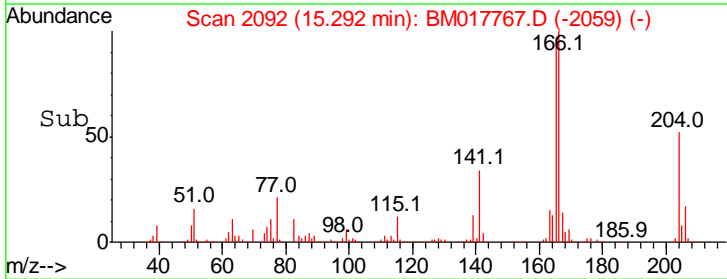
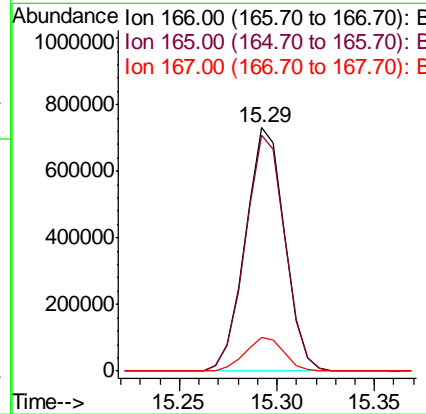
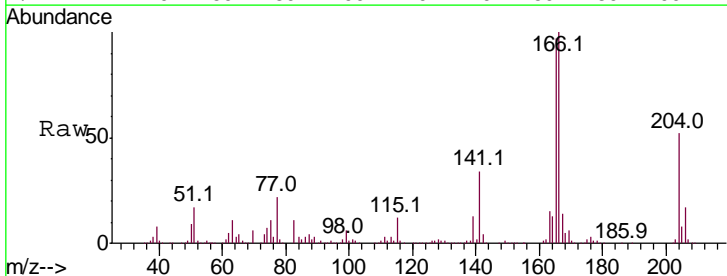
Instrument :
 BNA_M
 ClientSampled :

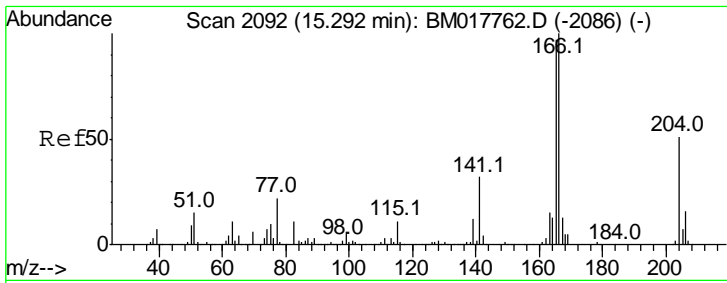
| Tgt Ion | Resp | Lower | Upper |
|---------|---------|-------|-------|
| 149 | 1060909 | | |
| 177 | 21.8 | 17.0 | 25.6 |
| 150 | 12.3 | 10.0 | 15.0 |



#58
 Fluorene
 Concen: 19.938 ng/ul
 RT: 15.29 min Scan# 2092
 Delta R.T. -0.01 min
 Lab File: BM017767.D
 Acq: 28 Nov 2018 09:44

| Tgt Ion | Resp | Lower | Upper |
|---------|---------|-------|-------|
| 166 | 1016418 | | |
| 165 | 96.8 | 78.0 | 117.0 |
| 167 | 13.8 | 10.8 | 16.2 |

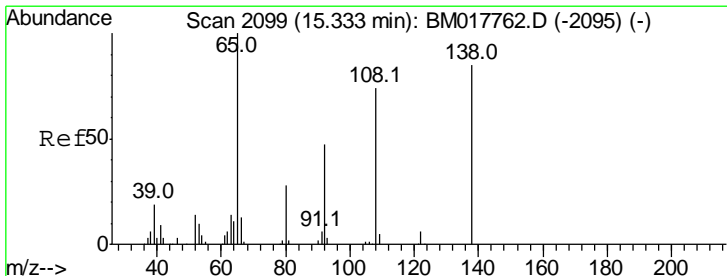
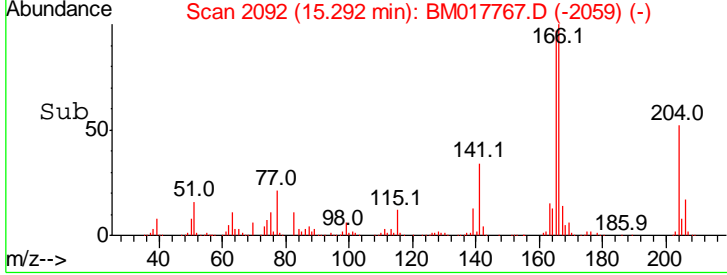
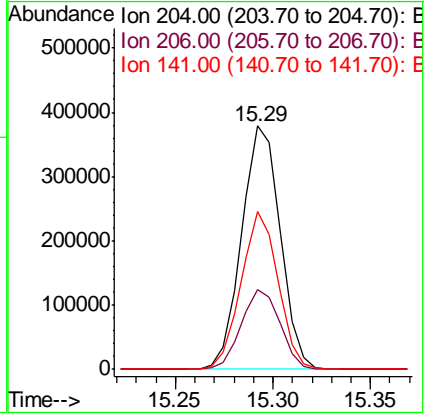
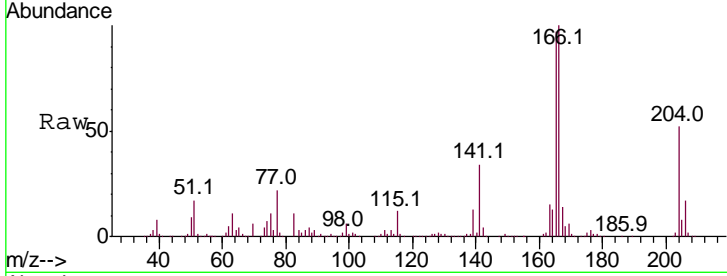




#59
 4-Chlorophenyl-phenylether
 Concen: 19.795 ng/ul
 RT: 15.29 min Scan# 2092
 Delta R.T. -0.01 min
 Lab File: BM017767.D
 Acq: 28 Nov 2018 09:44

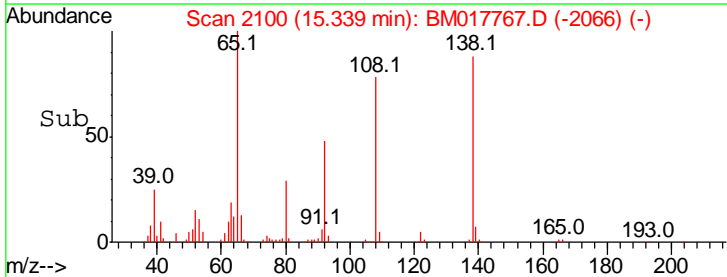
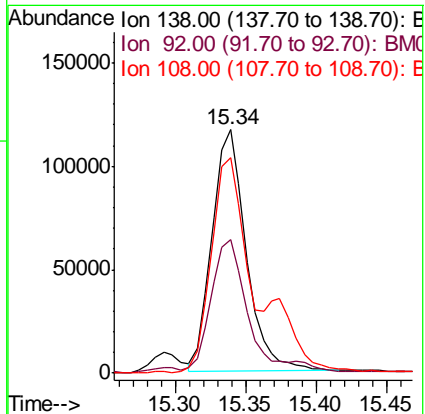
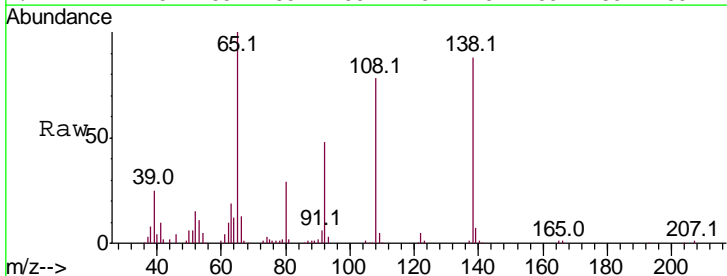
Instrument :
 BNA_M
 ClientSampled :

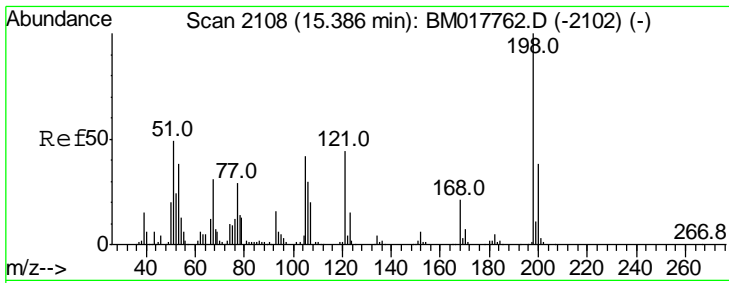
| Tgt Ion | Resp | Lower | Upper |
|---------|------|-------|-------|
| 204 | 100 | | |
| 206 | 32.9 | 25.6 | 38.4 |
| 141 | 64.7 | 49.8 | 74.6 |



#60
 4-Nitroaniline
 Concen: 18.370 ng/ul
 RT: 15.34 min Scan# 2100
 Delta R.T. -0.00 min
 Lab File: BM017767.D
 Acq: 28 Nov 2018 09:44

| Tgt Ion | Resp | Lower | Upper |
|---------|------|-------|-------|
| 138 | 100 | | |
| 92 | 55.0 | 42.8 | 64.2 |
| 108 | 88.7 | 70.2 | 105.4 |

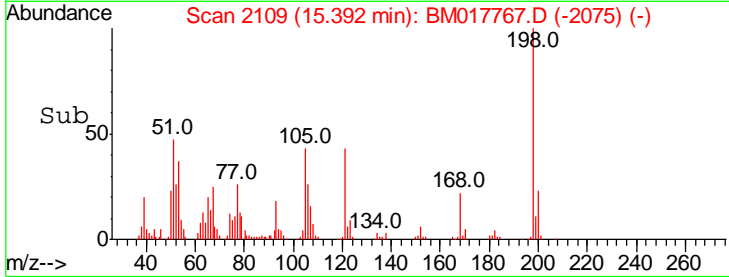
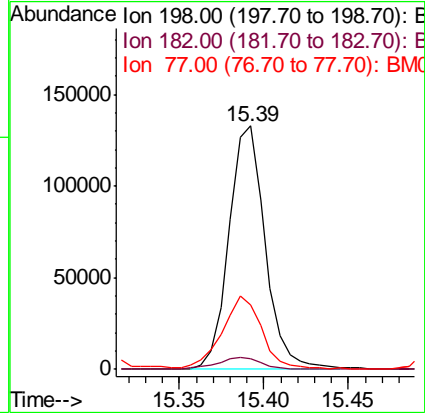
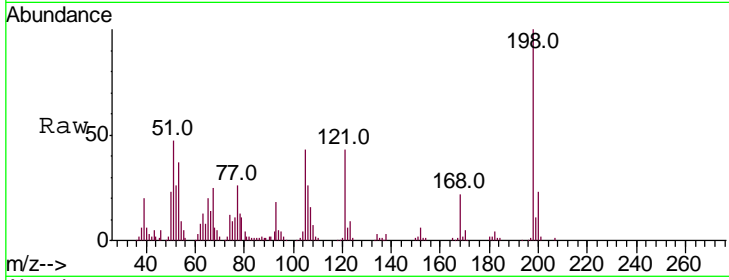




#63
 4,6-Dinitro-2-methylphenol
 Concen: 18.542 ng/ul
 RT: 15.39 min Scan# 2109
 Delta R.T. -0.00 min
 Lab File: BM017767.D
 Acq: 28 Nov 2018 09:44

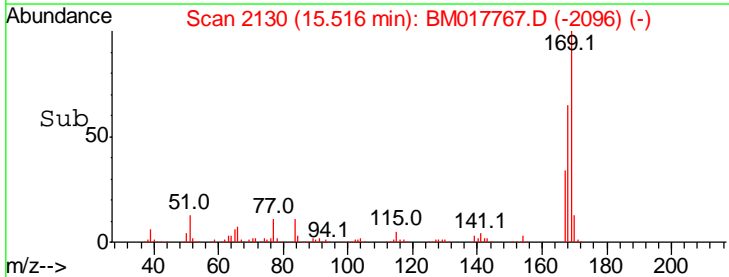
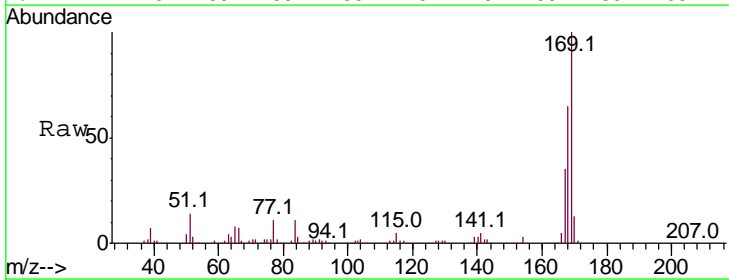
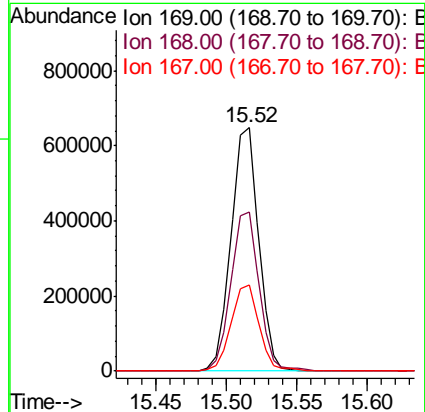
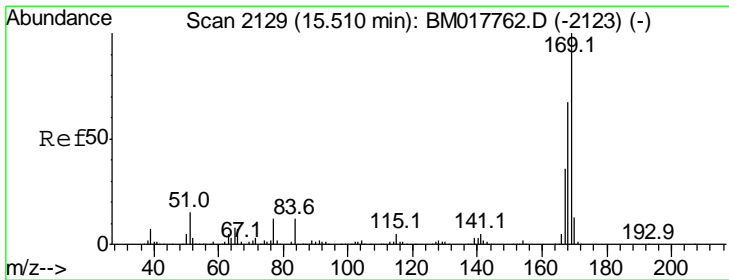
Instrument :
 BNA_M
 ClientSampled :

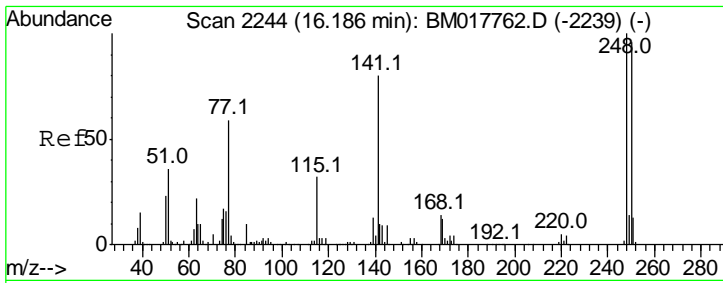
| Tgt Ion | Resp | Lower | Upper |
|---------|------|-------|-------|
| 198 | 100 | | |
| 182 | 4.1 | 3.5 | 5.3 |
| 77 | 26.2 | 24.6 | 36.8 |



#64
 N-Nitrosodiphenylamine
 Concen: 19.819 ng/ul
 RT: 15.52 min Scan# 2130
 Delta R.T. -0.00 min
 Lab File: BM017767.D
 Acq: 28 Nov 2018 09:44

| Tgt Ion | Resp | Lower | Upper |
|---------|------|-------|-------|
| 169 | 100 | | |
| 168 | 65.5 | 51.1 | 76.7 |
| 167 | 35.2 | 27.8 | 41.8 |

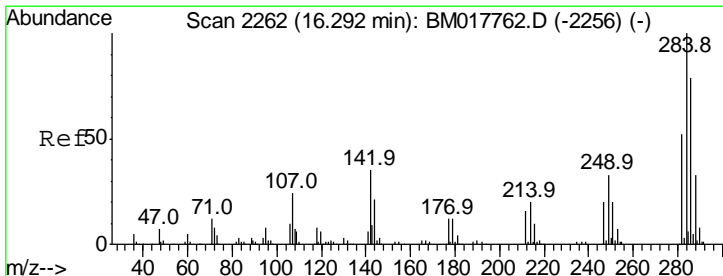
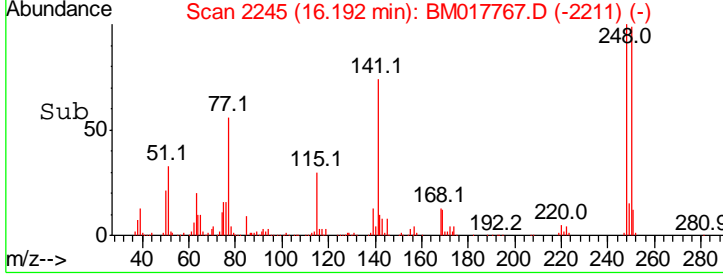
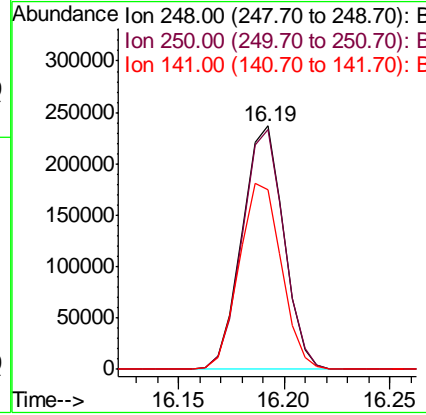
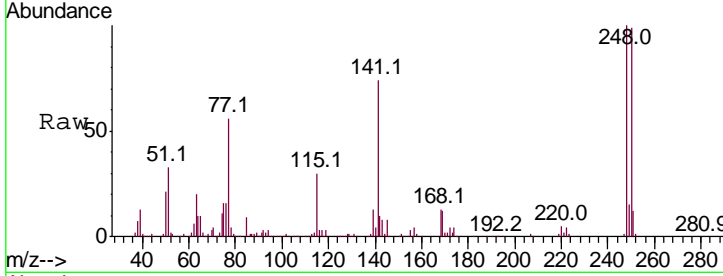




#65
 4-Bromophenyl-phenylether
 Concen: 19.514 ng/ul
 RT: 16.19 min Scan# 2245
 Delta R.T. -0.00 min
 Lab File: BM017767.D
 Acq: 28 Nov 2018 09:44

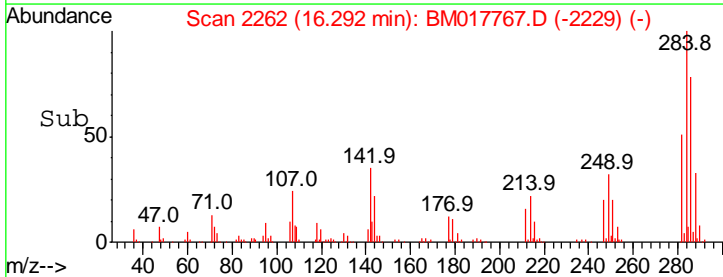
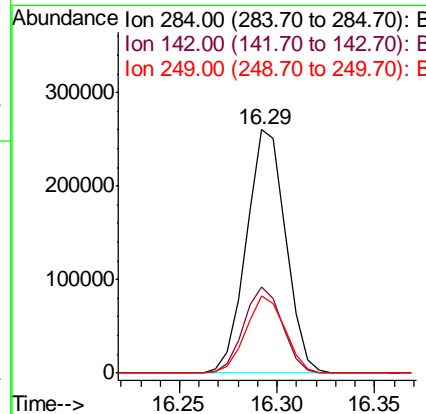
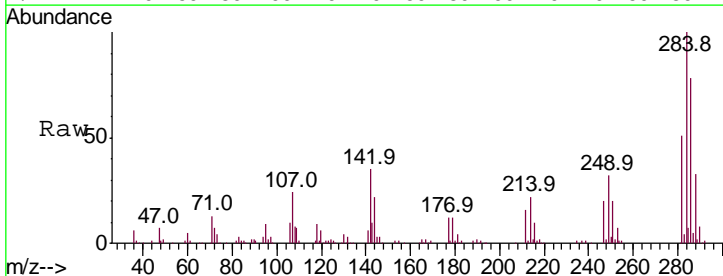
Instrument :
 BNA_M
 ClientSampled :

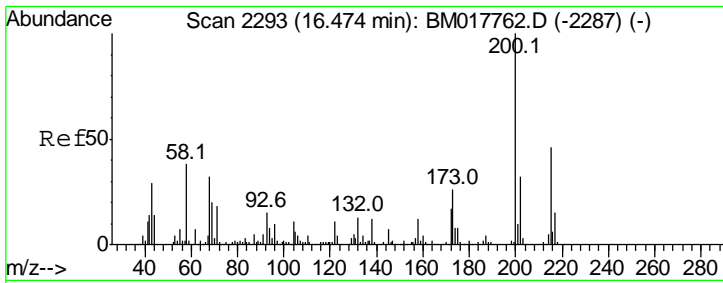
| Tgt Ion | Resp | Lower | Upper |
|---------|------|-------|-------|
| 248 | 100 | | |
| 250 | 98.6 | 80.8 | 121.2 |
| 141 | 73.9 | 56.9 | 85.3 |



#66
 Hexachlorobenzene
 Concen: 19.675 ng/ul
 RT: 16.29 min Scan# 2262
 Delta R.T. -0.01 min
 Lab File: BM017767.D
 Acq: 28 Nov 2018 09:44

| Tgt Ion | Resp | Lower | Upper |
|---------|------|-------|-------|
| 284 | 100 | | |
| 142 | 35.3 | 26.2 | 39.4 |
| 249 | 31.7 | 24.0 | 36.0 |

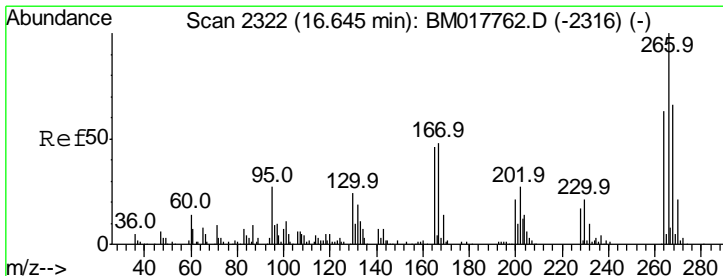
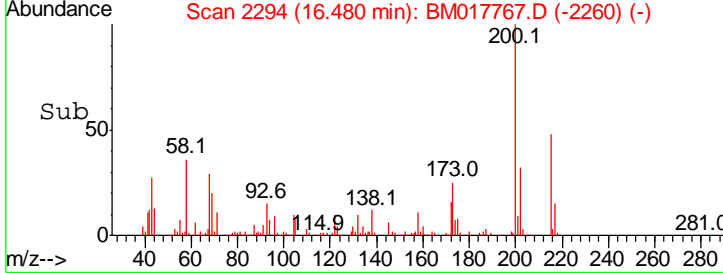
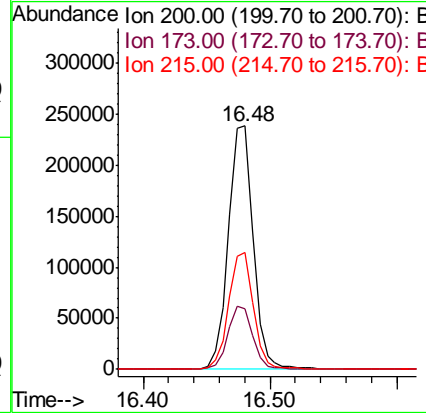
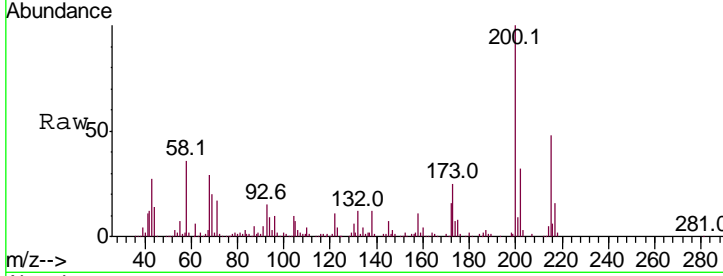




#67
 Atrazine
 Concen: 19.564 ng/ul
 RT: 16.48 min Scan# 2294
 Delta R.T. -0.00 min
 Lab File: BM017767.D
 Acq: 28 Nov 2018 09:44

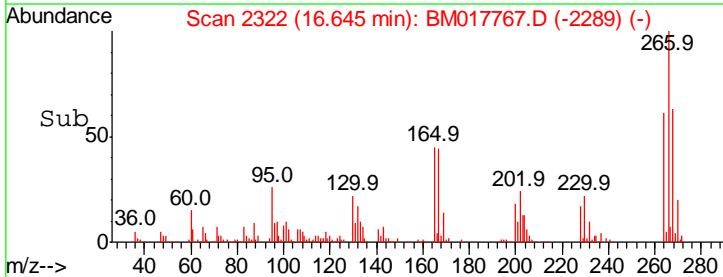
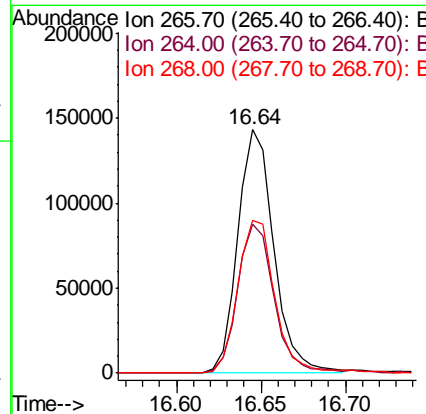
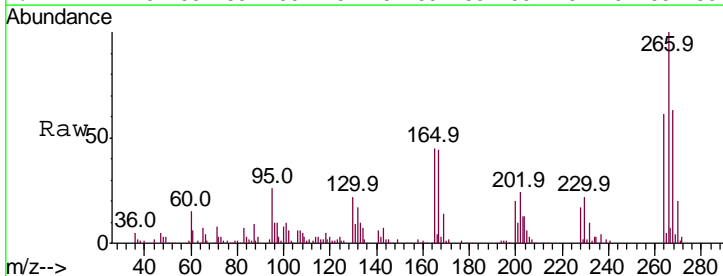
Instrument :
 BNA_M
 ClientSampled :

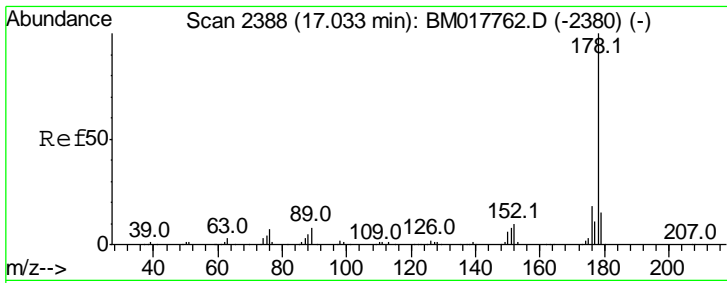
| Tgt Ion | Resp | Lower | Upper |
|---------|------|-------|-------|
| 200 | 100 | | |
| 173 | 24.8 | 21.0 | 31.6 |
| 215 | 47.8 | 38.2 | 57.2 |



#68
 Pentachlorophenol
 Concen: 18.603 ng/ul
 RT: 16.64 min Scan# 2322
 Delta R.T. -0.01 min
 Lab File: BM017767.D
 Acq: 28 Nov 2018 09:44

| Tgt Ion | Resp | Lower | Upper |
|---------|------|-------|-------|
| 266 | 100 | | |
| 264 | 61.4 | 50.2 | 75.2 |
| 268 | 62.8 | 49.8 | 74.8 |



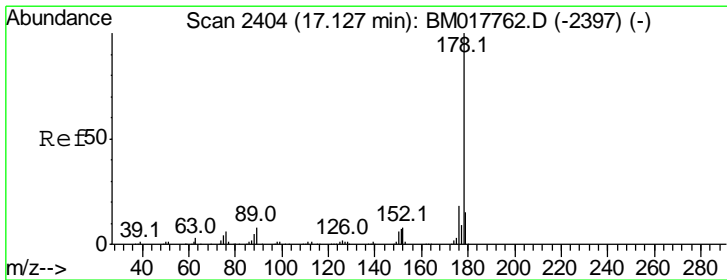
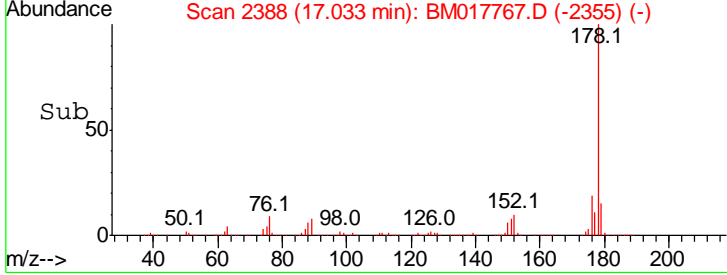
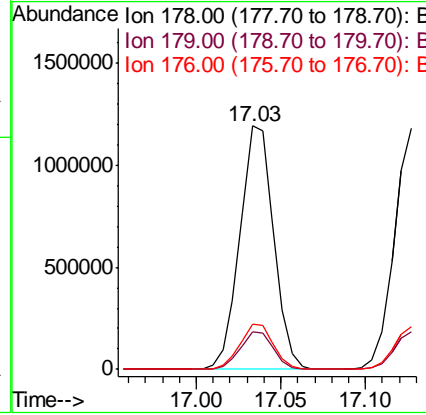
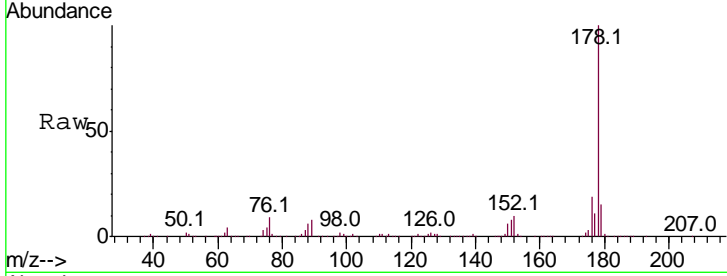


#69
 Phenanthrene
 Concen: 20.017 ng/ul
 RT: 17.03 min Scan# 2388
 Delta R.T. -0.01 min
 Lab File: BM017767.D
 Acq: 28 Nov 2018 09:44

Instrument :
 BNA_M
 ClientSampled :

Tgt Ion:178 Resp: 1662648

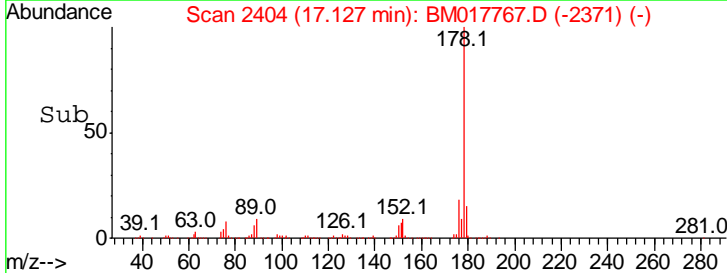
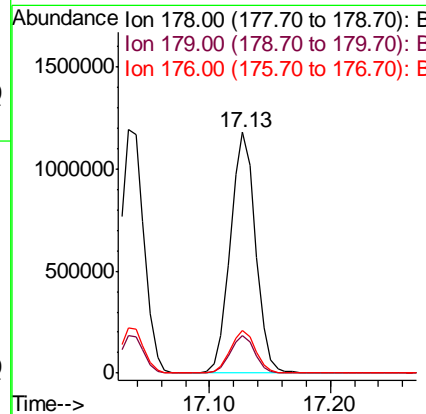
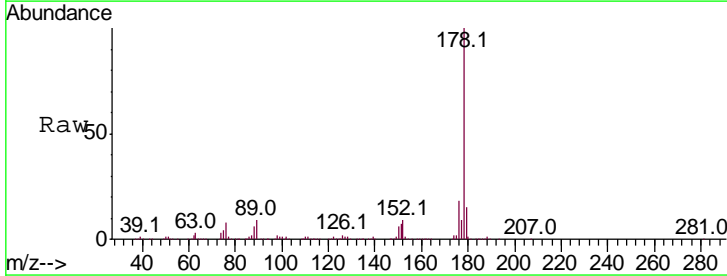
| Ion | Ratio | Lower | Upper |
|-----|-------|-------|-------|
| 178 | 100 | | |
| 179 | 15.4 | 11.8 | 17.8 |
| 176 | 18.6 | 15.0 | 22.6 |

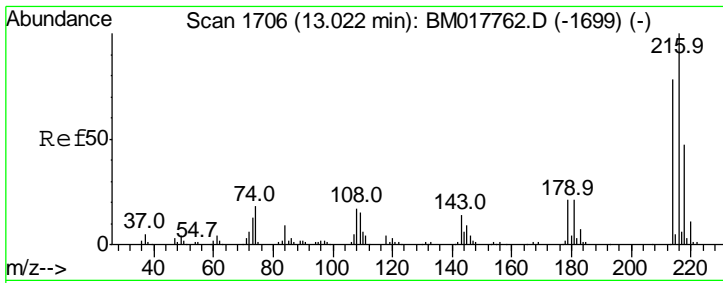


#71
 Anthracene
 Concen: 20.118 ng/ul
 RT: 17.13 min Scan# 2404
 Delta R.T. -0.01 min
 Lab File: BM017767.D
 Acq: 28 Nov 2018 09:44

Tgt Ion:178 Resp: 1708909

| Ion | Ratio | Lower | Upper |
|-----|-------|-------|-------|
| 178 | 100 | | |
| 179 | 15.4 | 12.4 | 18.6 |
| 176 | 17.9 | 14.8 | 22.2 |

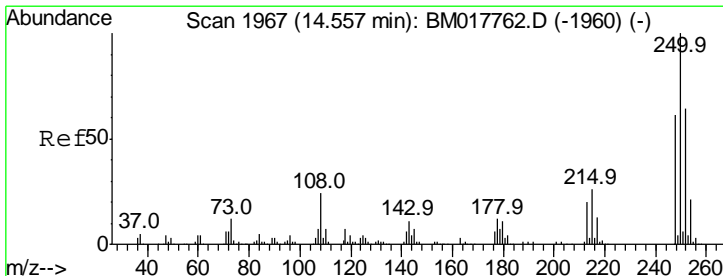
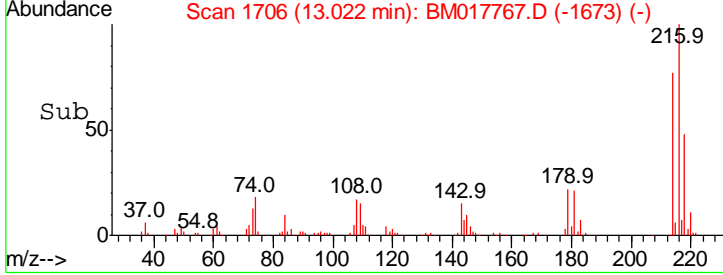
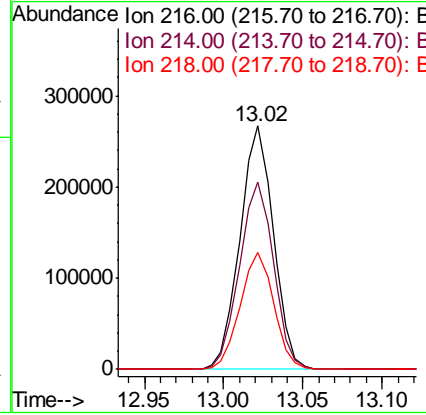
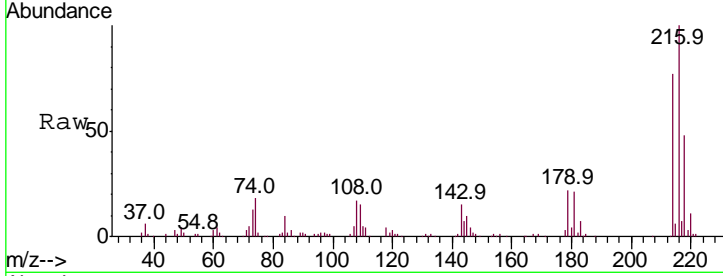




#72
 1,2,3,4-Tetrachlorobenzene
 Concen: 19.047 ng/uL
 RT: 13.02 min Scan# 1706
 Delta R.T. -0.01 min
 Lab File: BM017767.D
 Acq: 28 Nov 2018 09:44

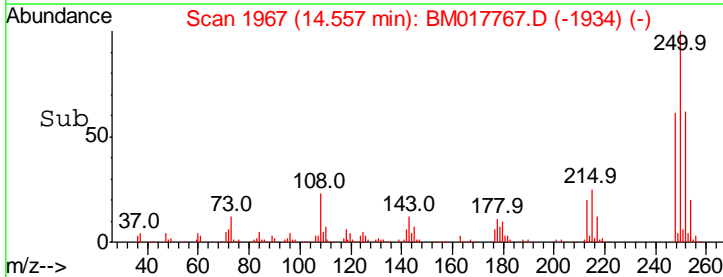
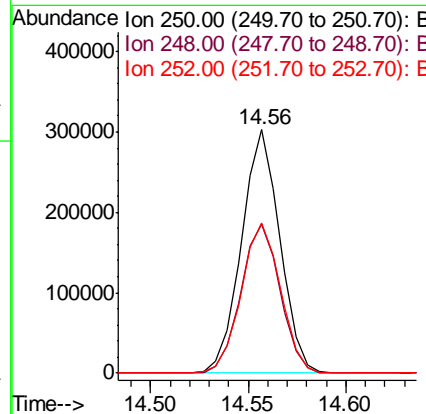
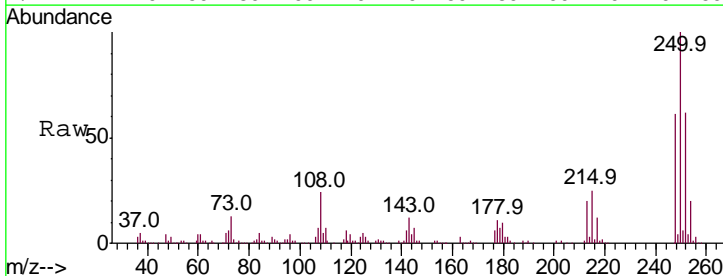
Instrument :
 BNA_M
 ClientSampled :

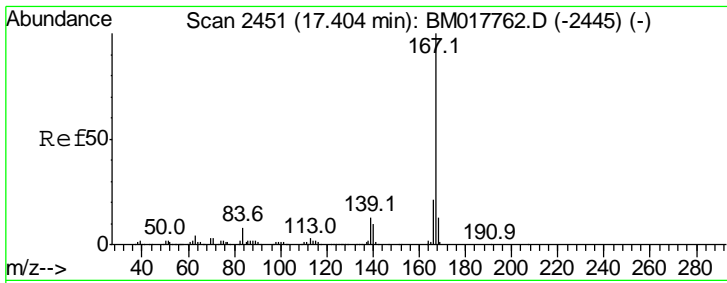
| Tgt Ion | Resp | Lower | Upper |
|---------|------|-------|-------|
| 216 | 100 | | |
| 214 | 77.2 | 62.2 | 93.4 |
| 218 | 48.0 | 37.9 | 56.9 |



#73
 Pentachlorobenzene
 Concen: 19.598 ng/uL
 RT: 14.56 min Scan# 1967
 Delta R.T. -0.01 min
 Lab File: BM017767.D
 Acq: 28 Nov 2018 09:44

| Tgt Ion | Resp | Lower | Upper |
|---------|------|-------|-------|
| 250 | 100 | | |
| 248 | 61.4 | 50.5 | 75.7 |
| 252 | 61.8 | 50.6 | 76.0 |



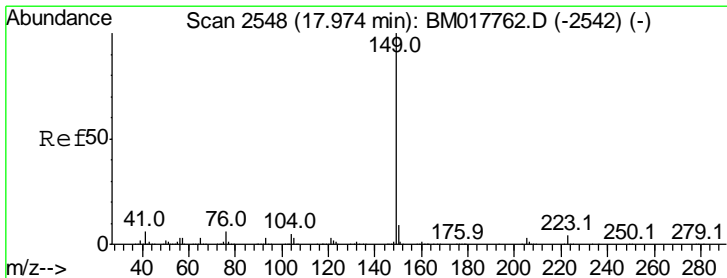
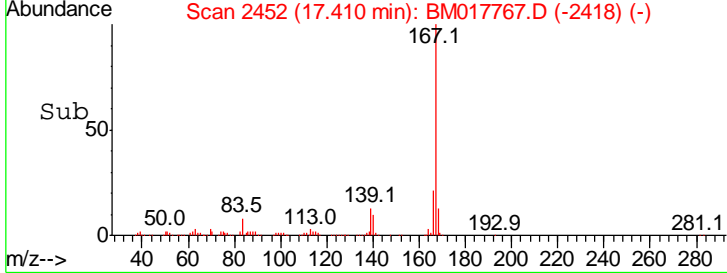
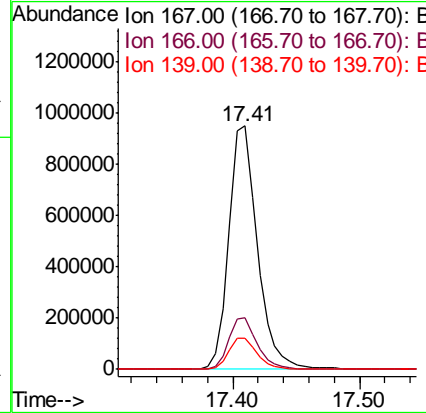
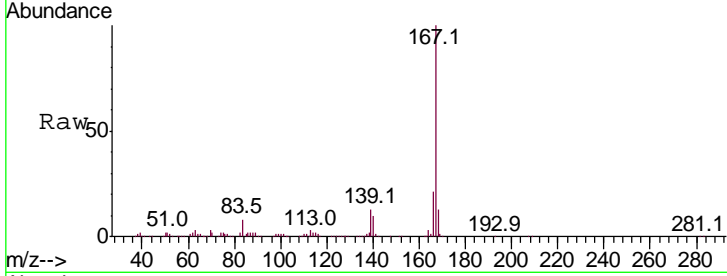


#74
 Carbazole
 Concen: 19.804 ng/ul
 RT: 17.41 min Scan# 2452
 Delta R.T. -0.00 min
 Lab File: BM017767.D
 Acq: 28 Nov 2018 09:44

Instrument :
 BNA_M
 ClientSampled :

Tgt Ion:167 Resp: 1482298

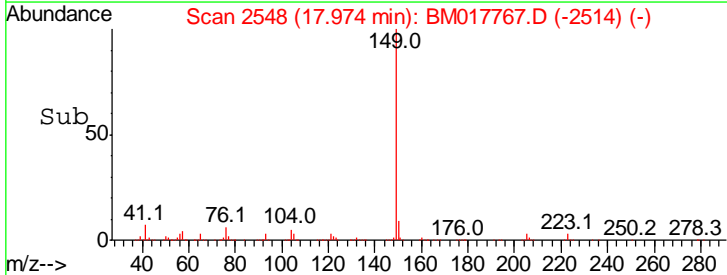
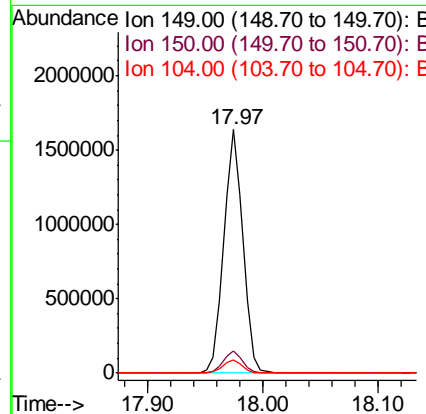
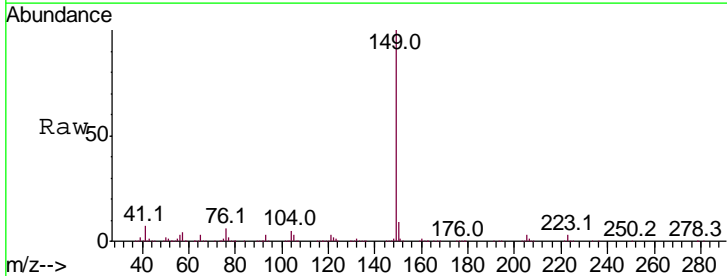
| Ion | Ratio | Lower | Upper |
|-----|-------|-------|-------|
| 167 | 100 | | |
| 166 | 21.4 | 17.0 | 25.4 |
| 139 | 13.0 | 10.5 | 15.7 |

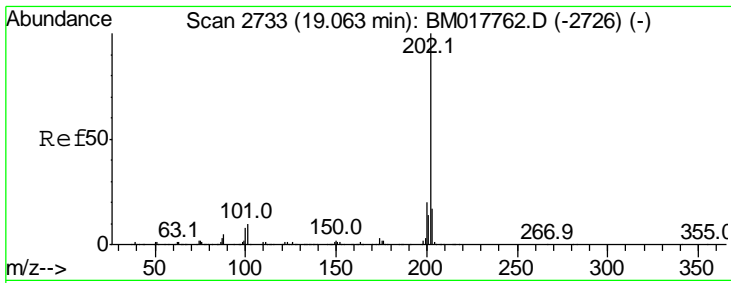


#75
 Di-n-butylphthalate
 Concen: 19.820 ng/ul
 RT: 17.97 min Scan# 2548
 Delta R.T. -0.00 min
 Lab File: BM017767.D
 Acq: 28 Nov 2018 09:44

Tgt Ion:149 Resp: 1874811

| Ion | Ratio | Lower | Upper |
|-----|-------|-------|-------|
| 149 | 100 | | |
| 150 | 8.9 | 7.0 | 10.6 |
| 104 | 5.3 | 4.2 | 6.4 |



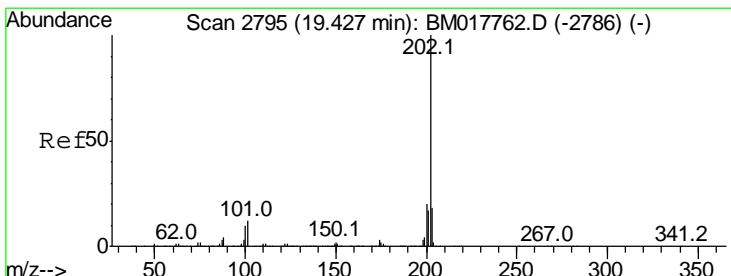
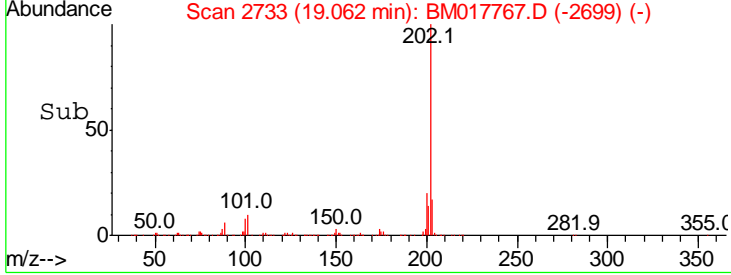
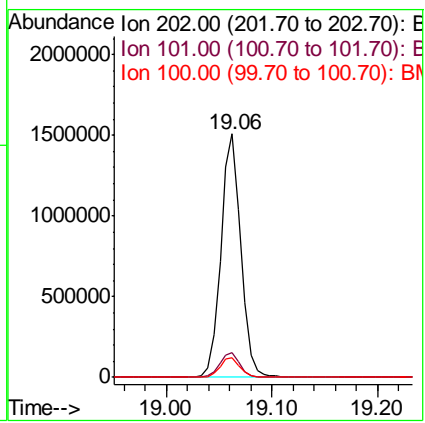
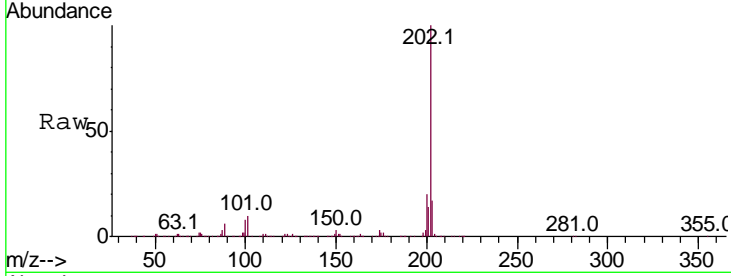


#76
 Fluoranthene
 Concen: 20.240 ng/ul
 RT: 19.06 min Scan# 2733
 Delta R.T. -0.00 min
 Lab File: BM017767.D
 Acq: 28 Nov 2018 09:44

Instrument :
 BNA_M
 ClientSampled :

Tgt Ion: 202 Resp: 1977407

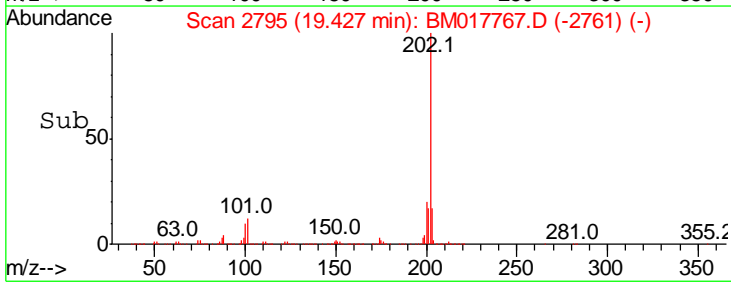
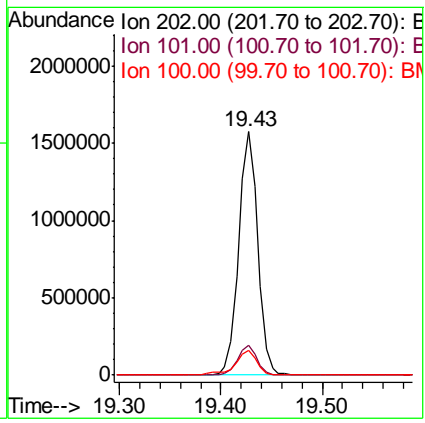
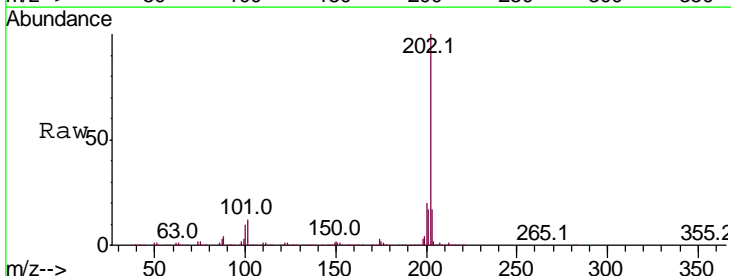
| Ion | Ratio | Lower | Upper |
|-----|-------|-------|-------|
| 202 | 100 | | |
| 101 | 10.2 | 8.4 | 12.6 |
| 100 | 8.1 | 6.6 | 9.8 |

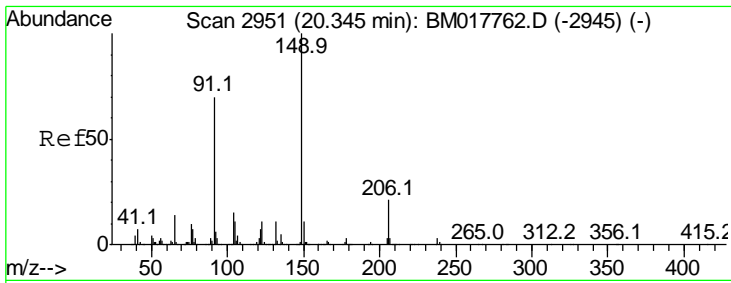


#79
 Pyrene
 Concen: 19.841 ng/ul
 RT: 19.43 min Scan# 2795
 Delta R.T. -0.00 min
 Lab File: BM017767.D
 Acq: 28 Nov 2018 09:44

Tgt Ion: 202 Resp: 2058781

| Ion | Ratio | Lower | Upper |
|-----|-------|-------|-------|
| 202 | 100 | | |
| 101 | 12.3 | 9.6 | 14.4 |
| 100 | 10.3 | 7.9 | 11.9 |

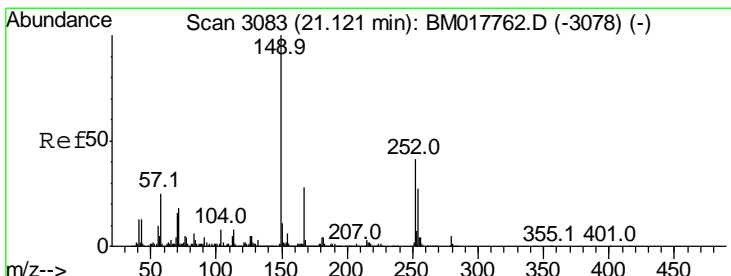
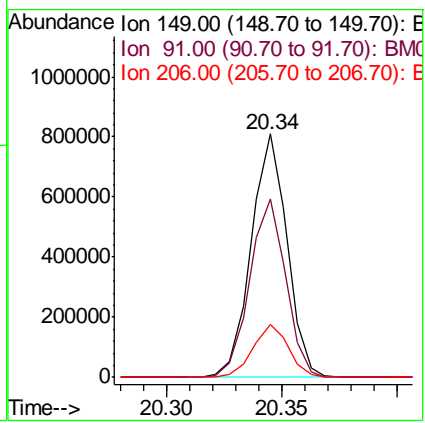
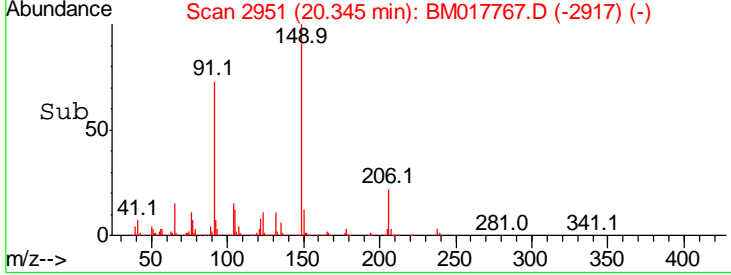
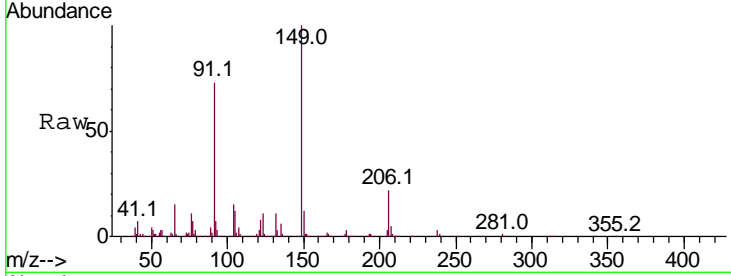




#80
 Butylbenzylphthalate
 Concen: 19.756 ng/ul
 RT: 20.34 min Scan# 2951
 Delta R.T. -0.00 min
 Lab File: BM017767.D
 Acq: 28 Nov 2018 09:44

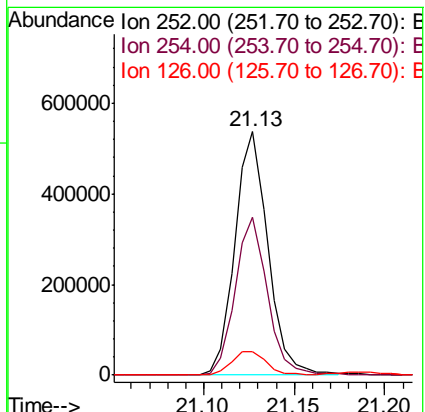
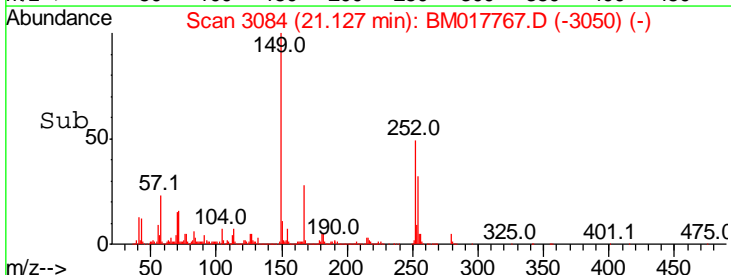
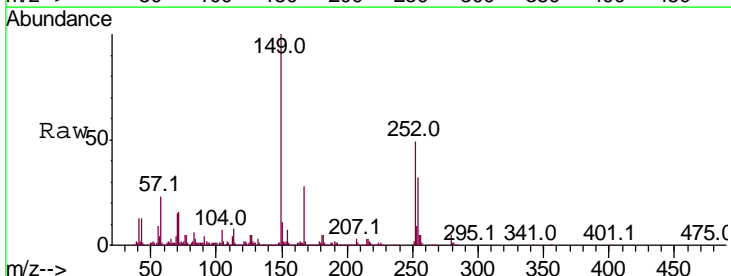
Instrument :
 BNA_M
 ClientSampled :

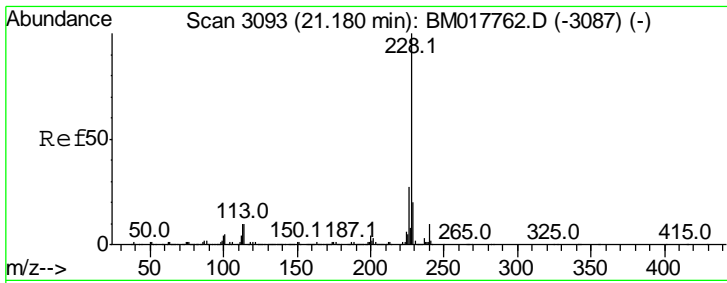
| Tgt Ion | Resp | Lower | Upper |
|---------|------|-------|-------|
| 149 | 100 | | |
| 91 | 73.1 | 58.0 | 87.0 |
| 206 | 21.7 | 16.6 | 24.8 |



#81
 3,3'-Dichlorobenzidine
 Concen: 19.333 ng/ul
 RT: 21.13 min Scan# 3084
 Delta R.T. -0.00 min
 Lab File: BM017767.D
 Acq: 28 Nov 2018 09:44

| Tgt Ion | Resp | Lower | Upper |
|---------|------|-------|-------|
| 252 | 100 | | |
| 254 | 64.6 | 51.2 | 76.8 |
| 126 | 9.8 | 9.1 | 13.7 |



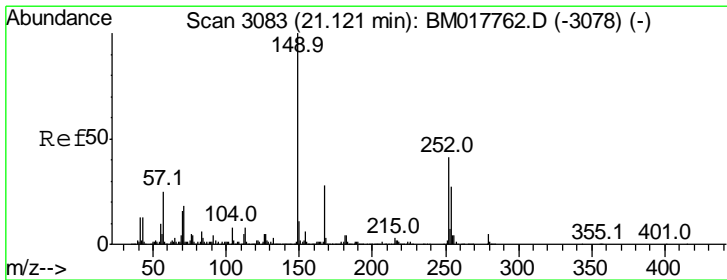
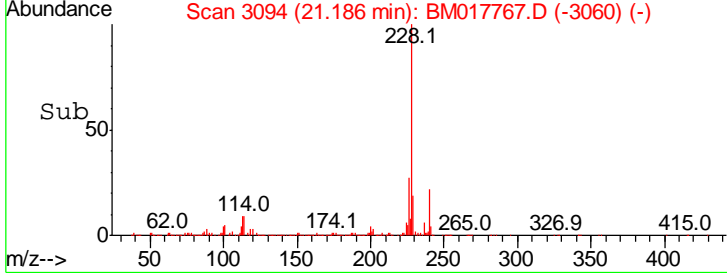
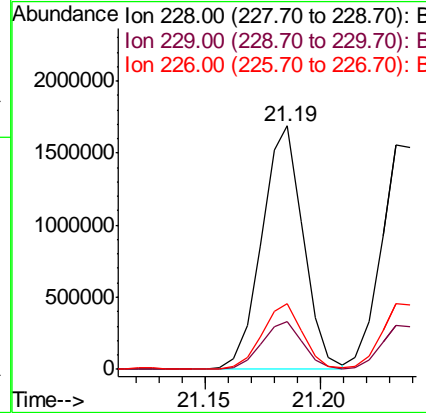
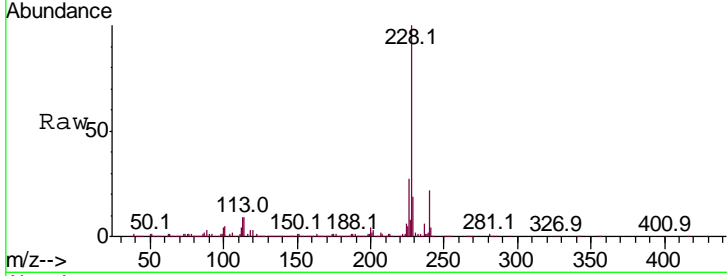


#82
 Benzo(a)anthracene
 Concen: 19.831 ng/ul
 RT: 21.19 min Scan# 3094
 Delta R.T. -0.00 min
 Lab File: BM017767.D
 Acq: 28 Nov 2018 09:44

Instrument :
 BNA_M
 ClientSampled :

Tgt Ion: 228 Resp: 2102490

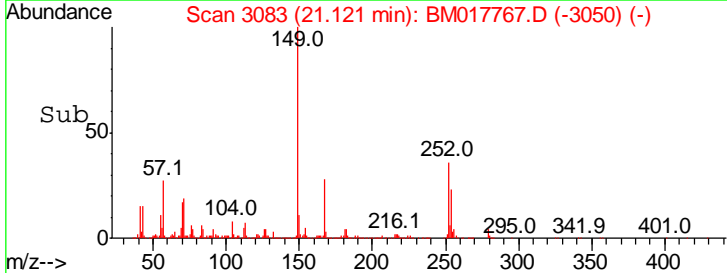
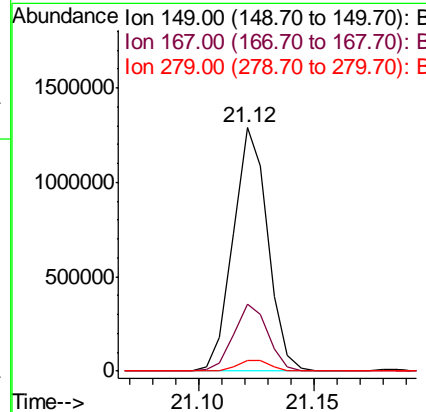
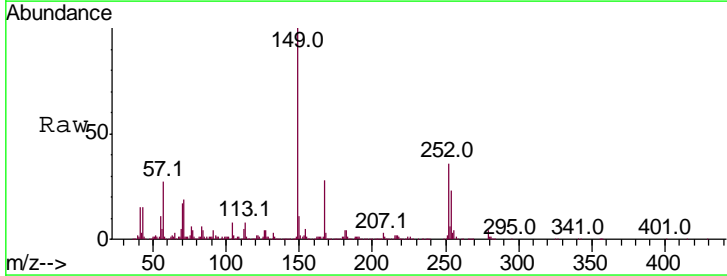
| Ion | Ratio | Lower | Upper |
|-----|-------|-------|-------|
| 228 | 100 | | |
| 229 | 19.5 | 16.0 | 24.0 |
| 226 | 27.0 | 21.0 | 31.6 |

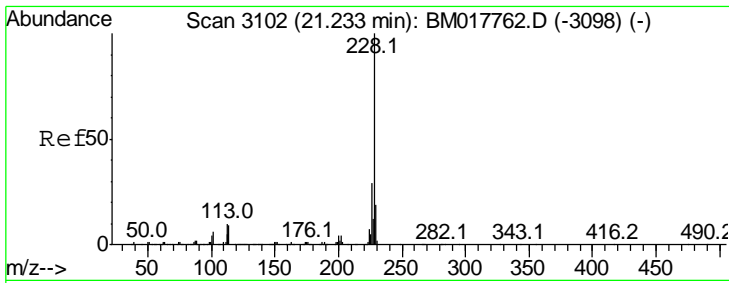


#83
 Bis(2-ethylhexyl)phthalate
 Concen: 20.356 ng/ul
 RT: 21.12 min Scan# 3083
 Delta R.T. -0.01 min
 Lab File: BM017767.D
 Acq: 28 Nov 2018 09:44

Tgt Ion: 149 Resp: 1337476

| Ion | Ratio | Lower | Upper |
|-----|-------|-------|-------|
| 149 | 100 | | |
| 167 | 27.5 | 21.9 | 32.9 |
| 279 | 4.4 | 3.6 | 5.4 |

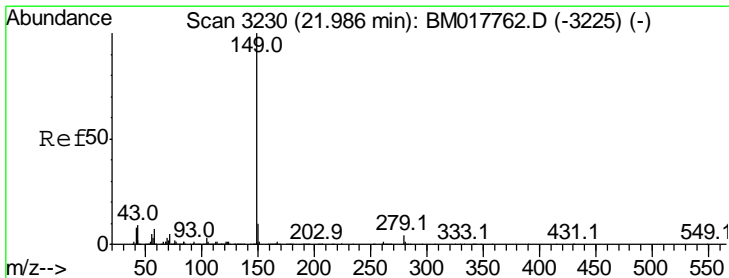
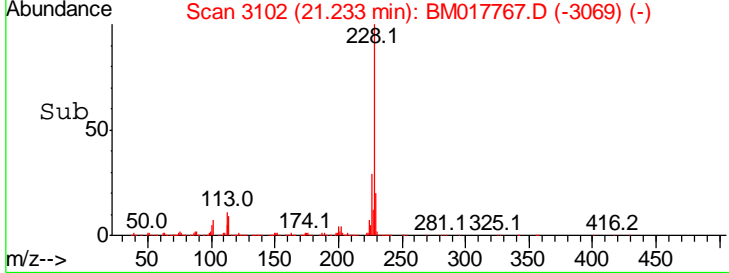
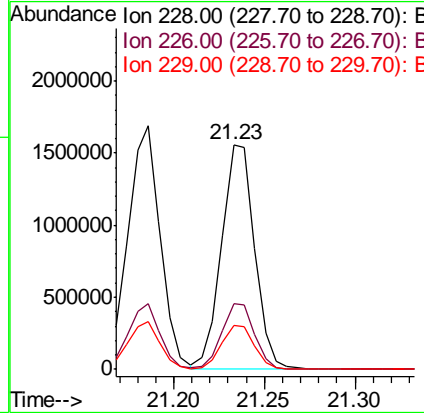
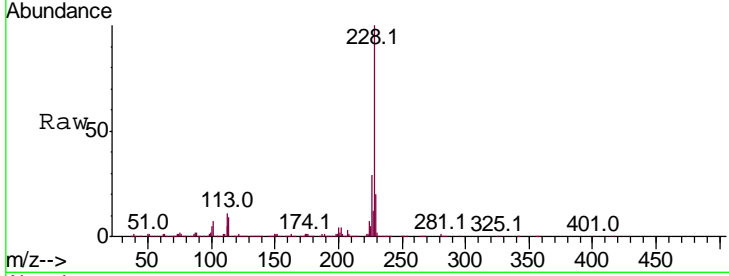




#84
 Chrysene
 Concen: 19.914 ng/ul
 RT: 21.23 min Scan# 3102
 Delta R.T. -0.01 min
 Lab File: BM017767.D
 Acq: 28 Nov 2018 09:44

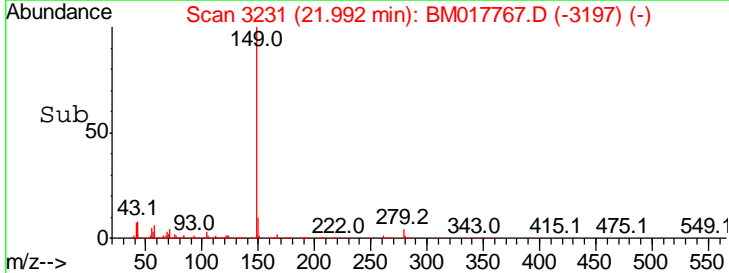
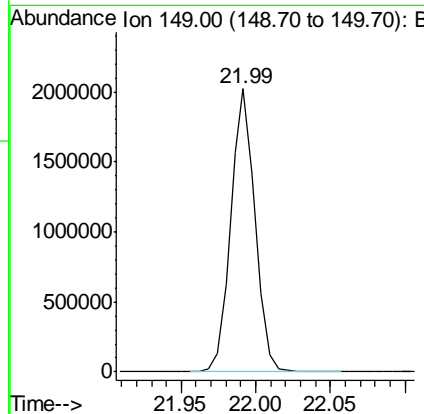
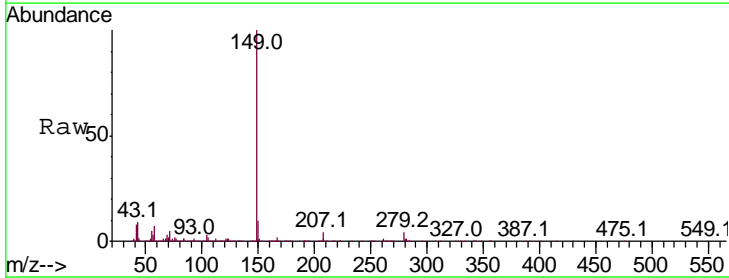
Instrument :
 BNA_M
 ClientSampled :

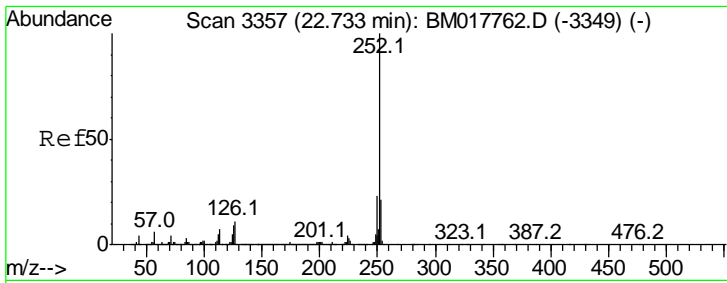
| Tgt Ion | Resp | Lower | Upper |
|---------|------|-------|-------|
| 228 | 100 | | |
| 226 | 29.4 | 23.7 | 35.5 |
| 229 | 19.5 | 15.8 | 23.8 |



#86
 Di-n-octyl phthalate
 Concen: 19.166 ng/ul
 RT: 21.99 min Scan# 3231
 Delta R.T. -0.00 min
 Lab File: BM017767.D
 Acq: 28 Nov 2018 09:44

Tgt Ion:149 Resp: 2296000



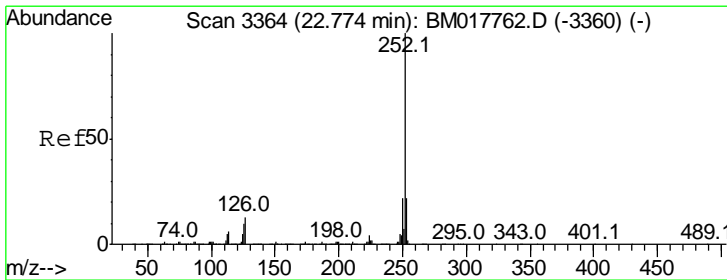
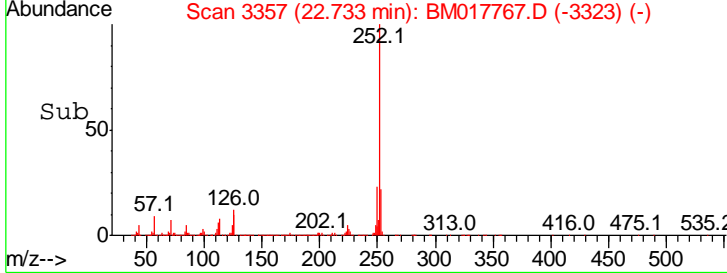
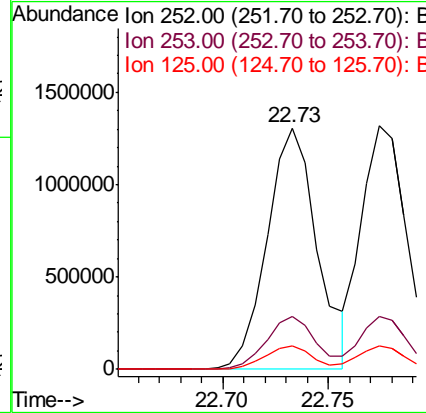
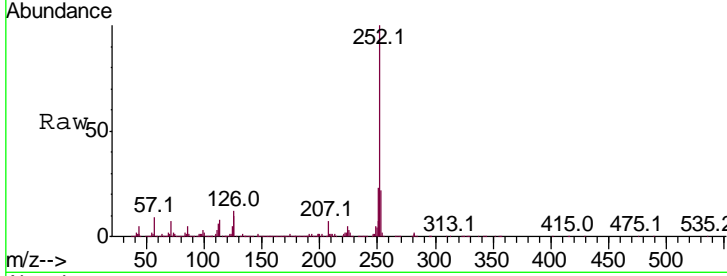


#87
 Benzo(b)fluoranthene
 Concen: 20.270 ng/ul
 RT: 22.73 min Scan# 3357
 Delta R.T. -0.00 min
 Lab File: BM017767.D
 Acq: 28 Nov 2018 09:44

Instrument :
 BNA_M
 ClientSampled :

Tgt Ion:252 Resp: 2155017

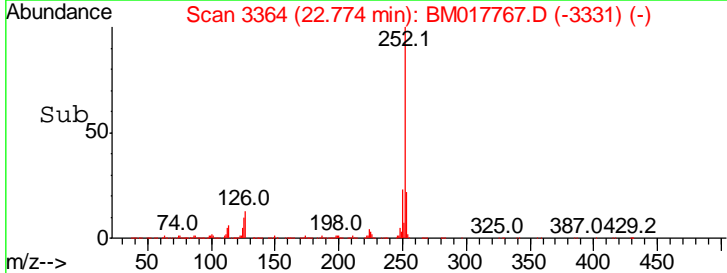
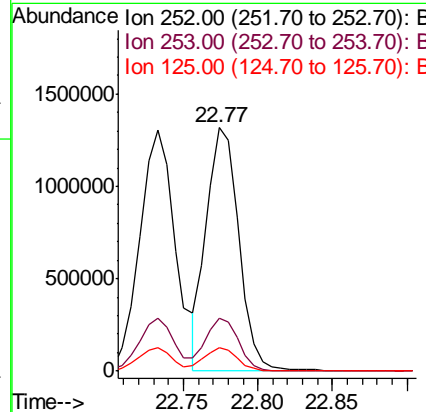
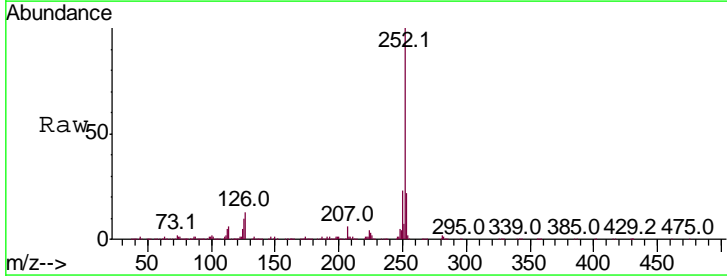
| Ion | Ratio | Lower | Upper |
|-----|-------|-------|-------|
| 252 | 100 | | |
| 253 | 22.1 | 17.0 | 25.4 |
| 125 | 9.8 | 7.3 | 10.9 |

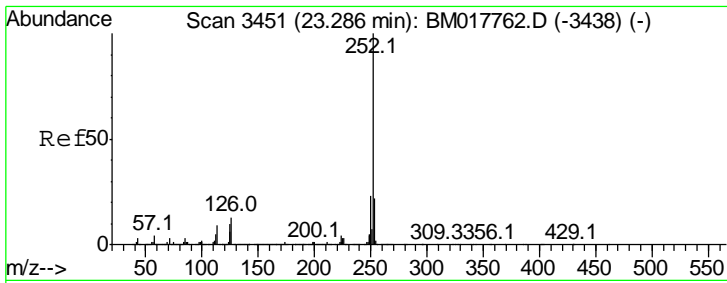


#88
 Benzo(k)fluoranthene
 Concen: 19.149 ng/ul
 RT: 22.77 min Scan# 3364
 Delta R.T. -0.01 min
 Lab File: BM017767.D
 Acq: 28 Nov 2018 09:44

Tgt Ion:252 Resp: 1978574

| Ion | Ratio | Lower | Upper |
|-----|-------|-------|-------|
| 252 | 100 | | |
| 253 | 21.6 | 17.4 | 26.0 |
| 125 | 9.7 | 7.1 | 10.7 |



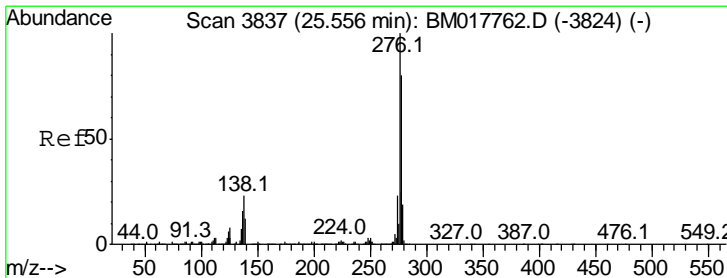
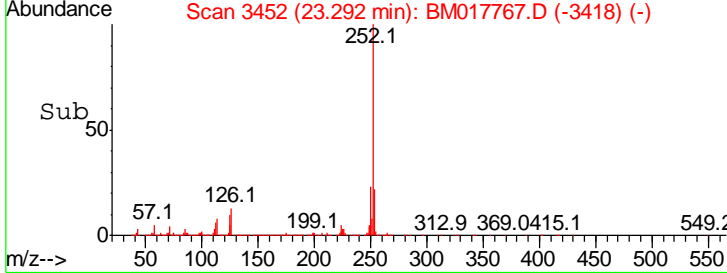
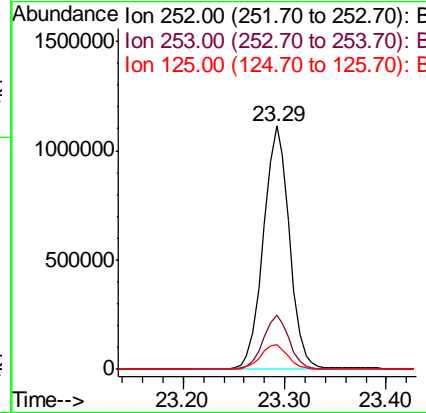
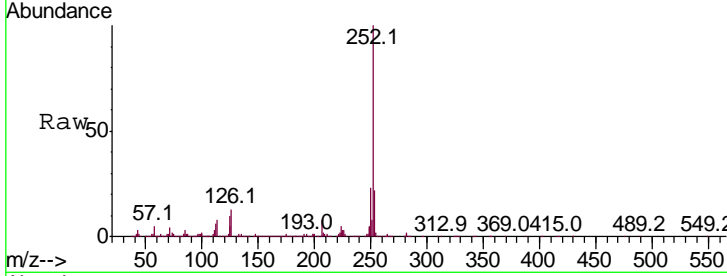


#90
 Benzo(a)pyrene
 Concen: 19.864 ng/ul
 RT: 23.29 min Scan# 3452
 Delta R.T. -0.00 min
 Lab File: BM017767.D
 Acq: 28 Nov 2018 09:44

Instrument :
 BNA_M
 ClientSampled :

Tgt Ion: 252 Resp: 2002692

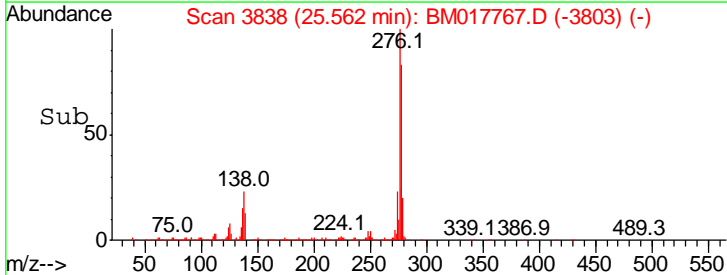
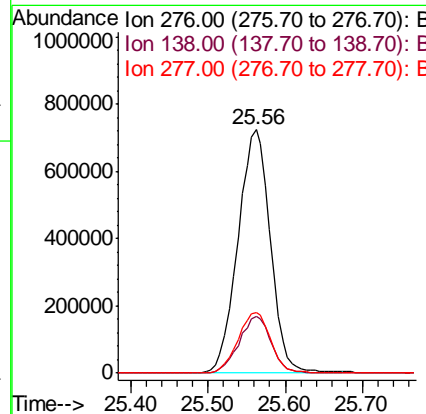
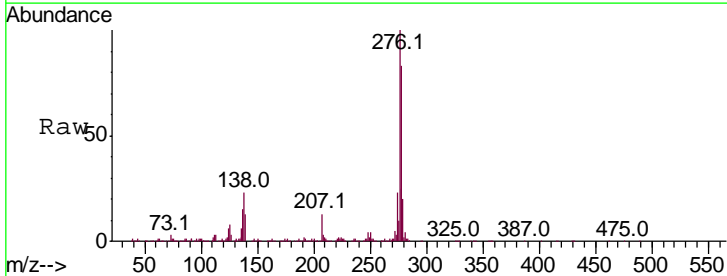
| Ion | Ratio | Lower | Upper |
|-----|-------|-------|-------|
| 252 | 100 | | |
| 253 | 22.1 | 17.4 | 26.0 |
| 125 | 10.3 | 7.9 | 11.9 |

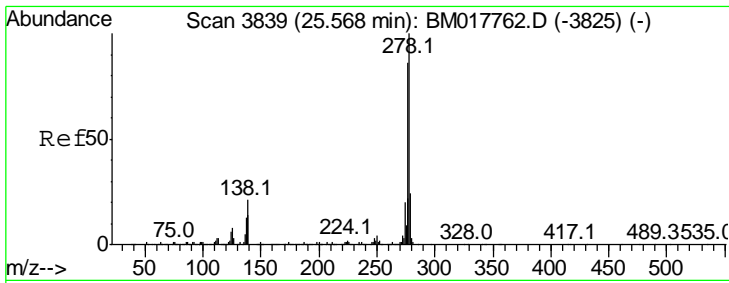


#91
 Indeno(1,2,3-cd)pyrene
 Concen: 19.956 ng/ul
 RT: 25.56 min Scan# 3838
 Delta R.T. 0.01 min
 Lab File: BM017767.D
 Acq: 28 Nov 2018 09:44

Tgt Ion: 276 Resp: 2131830

| Ion | Ratio | Lower | Upper |
|-----|-------|-------|-------|
| 276 | 100 | | |
| 138 | 23.3 | 18.2 | 27.2 |
| 277 | 24.7 | 20.2 | 30.4 |



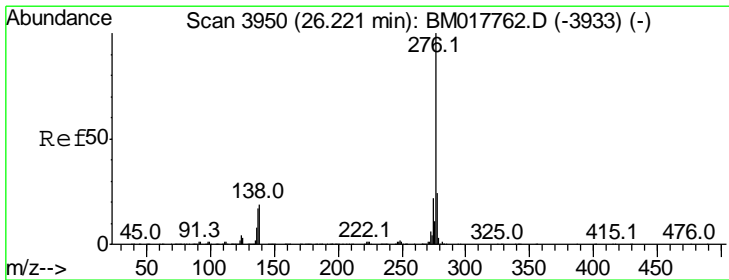
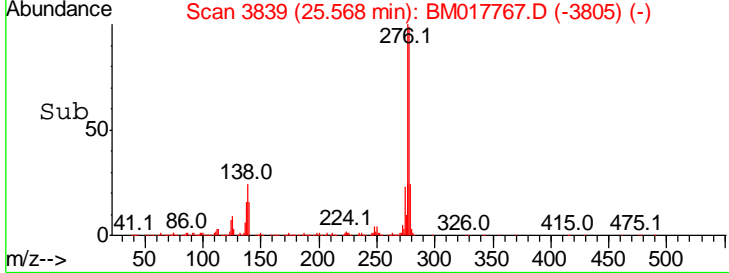
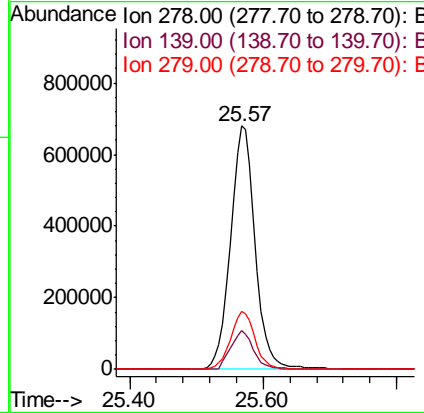
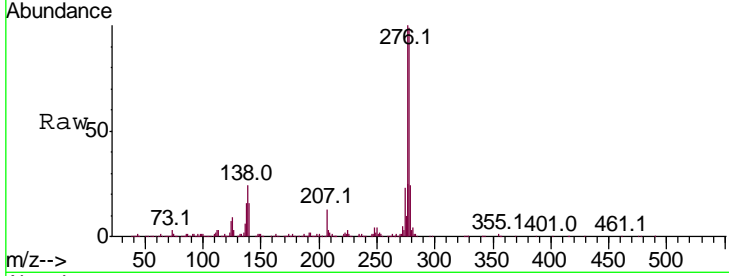


#92
 Dibenzo(a,h)anthracene
 Concen: 19.567 ng/ul
 RT: 25.57 min Scan# 3839
 Delta R.T. -0.00 min
 Lab File: BM017767.D
 Acq: 28 Nov 2018 09:44

Instrument :
 BNA_M
 ClientSampled :

Tgt Ion: 278 Resp: 1764861

| Ion | Ratio | Lower | Upper |
|-----|-------|-------|-------|
| 278 | 100 | | |
| 139 | 15.9 | 11.5 | 17.3 |
| 279 | 23.8 | 18.9 | 28.3 |



#93
 Benzo(g,h,i)perylene
 Concen: 20.343 ng/ul
 RT: 26.23 min Scan# 3951
 Delta R.T. 0.01 min
 Lab File: BM017767.D
 Acq: 28 Nov 2018 09:44

Tgt Ion: 276 Resp: 1756376

| Ion | Ratio | Lower | Upper |
|-----|-------|-------|-------|
| 276 | 100 | | |
| 138 | 20.0 | 15.8 | 23.6 |
| 277 | 23.4 | 18.6 | 27.8 |

