

Data Path : Z:\SVOASRV\HPCHEM1\BNA M\DATA\BM112818\  
 Data File : BM017770.D  
 Acq On : 28 Nov 2018 13:17  
 Operator : JU/SJ  
 Sample : PB115036BL  
 Misc :  
 ALS Vial : 5 Sample Multiplier: 1

Instrument :  
 BNA\_M  
 ClientSampleId :  
 SBLK36

Integration Parameters: LSCINT.P

Integrator: RTE  
 Smoothing : OFF  
 Sampling : 1  
 Start Thrs: 0.2  
 Stop Thrs : 0

Filtering: 5  
 Min Area: 0.1 % of largest Peak  
 Max Peaks: 100  
 Peak Location: TOP

If leading or trailing edge < 100 prefer < Baseline drop else tangent >  
 Peak separation: 5

Method : Z:\SVOASRV\HPCHEM1\BNA\_M\METHODS\SOM-EPA-BM111918MA.M  
 Title : SVOA CALIBRATION

Signal : TIC

peak #	R.T. min	first scan	max scan	last scan	PK TY	peak height	corr. area	corr. % max.	% of total
1	3.187	30	34	41	rVB	38997	53919	1.09%	0.110%
2	6.775	638	644	660	rBV	651372	1161986	23.43%	2.366%
3	6.940	666	672	687	rBV	561832	884119	17.83%	1.800%
4	7.128	698	704	721	rVB	742881	1204650	24.29%	2.453%
5	7.593	775	783	794	rBV	560768	936455	18.88%	1.907%
6	8.298	897	903	920	rBV	830131	1467755	29.59%	2.989%
7	8.745	970	979	993	rBV	723302	1228814	24.78%	2.502%
8	9.457	1094	1100	1112	rBV	605680	1037460	20.92%	2.113%
9	9.992	1183	1191	1202	rBV	815153	1470301	29.64%	2.994%
10	10.357	1246	1253	1263	rBV	857144	1431472	28.86%	2.915%
11	10.510	1272	1279	1303	rBV	711790	1665268	33.58%	3.391%
12	12.004	1526	1533	1543	rBV	8677	20483	0.41%	0.042%
13	13.657	1808	1814	1831	rBV	1733846	2622746	52.88%	5.341%
14	13.927	1853	1860	1875	rBV	2094035	3036205	61.22%	6.183%
15	14.239	1906	1913	1926	rBV2	1316371	2070872	41.75%	4.217%
16	14.469	1946	1952	1968	rBV	455379	1006400	20.29%	2.049%
17	15.080	2053	2056	2061	rBV	5869	6423	0.13%	0.013%
18	15.239	2076	2083	2100	rBV	2598608	3900082	78.63%	7.942%
19	15.374	2100	2106	2117	rVV	713489	1147734	23.14%	2.337%
20	15.480	2120	2124	2132	rVB2	30525	49854	1.01%	0.102%
21	16.780	2340	2345	2351	rVB2	5077	7583	0.15%	0.015%
22	16.992	2375	2381	2391	rBV	1883495	2530056	51.01%	5.152%
23	17.092	2391	2398	2420	rVB	2840675	4268673	86.07%	8.693%
24	19.033	2724	2728	2733	rBV	18089	28350	0.57%	0.058%
25	19.286	2767	2771	2776	rVB	17494	23681	0.48%	0.048%
26	19.398	2784	2790	2804	rBV	3355441	4886206	98.52%	9.950%
27	21.198	3091	3096	3110	rBV2	2019989	3074851	62.00%	6.262%
28	23.244	3437	3444	3457	rBV	2613247	4959810	100.00%	10.100%
29	23.386	3461	3468	3482	rVB	1462749	2923895	58.95%	5.954%

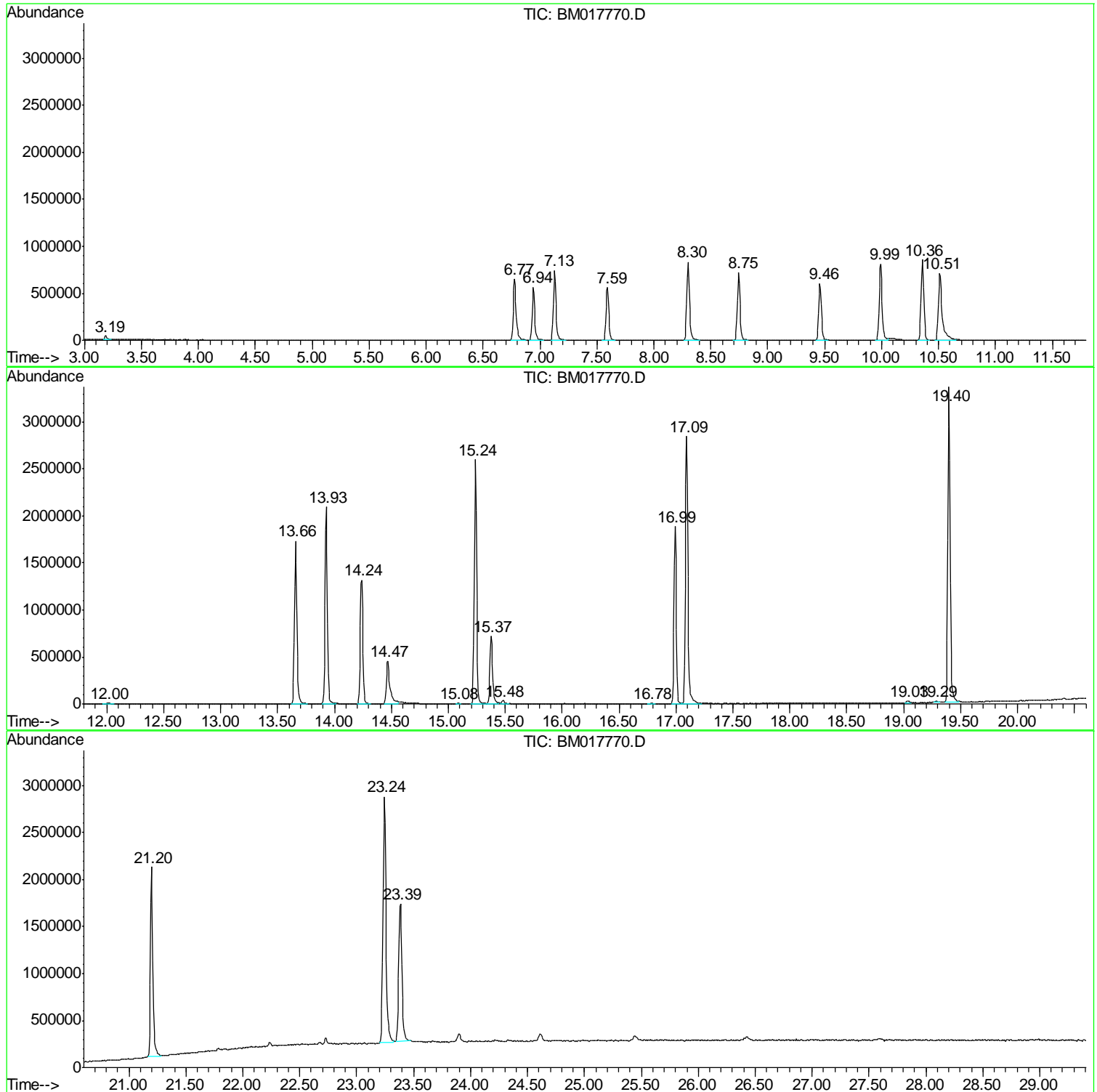
Sum of corrected areas: 49106103

Data Path : Z:\SVOASRV\HPCHEM1\BNA M\DATA\BM112818\  
Data File : BM017770.D  
Acq On : 28 Nov 2018 13:17  
Operator : JU/SJ  
Sample : PB115036BL  
Misc :  
ALS Vial : 5 Sample Multiplier: 1

Instrument :  
BNA\_M  
ClientSampled :  
SBLK36

Quant Method : Z:\SVOASRV\HPCHEM1\BNA\_M\METHODS\SOM-EPA-BM11918MA.M  
Quant Title : SVOA CALIBRATION

TIC Library : C:\DATABASE\NIST02.L  
TIC Integration Parameters: LSCINT.P



Data\_Path\_ : Z:\SVOASRV\HPCHEM1\BNA\_M\DATA\BM112818\  
Data\_File\_ : BM017770.D  
Acq\_On\_ : 28\_Nov.2018\_ 13:177  
Operator\_ : JU/SJJ  
Sample\_ : PB115036BLL  
Misc\_ :  
ALS\_Vial\_ : 5\_ Sample\_Multiplier: 11

Instrument :  
BNA\_M  
ClientSampleId :  
SBLK36

Quant\_Method\_ : Z:\SVOASRV\HPCHEM1\BNA\_M\METHODS\SOM-EPA-BM111918MA\_MM  
Quant\_Title\_ : SVOA\_CALIBRATIONN

TIC\_Library\_ : C:\DATABASE\NIST02.LL  
TIC\_Integration\_Parameters: LSCINT.PP

TIC Top Hit name	RT	EstConc	Units	Response	---Internal Standard---
				#	RT Resp Conc

No Library Search Compounds Detected

\*\*\*\*\*