

Data File : BM017877.D
 Acq On : 03 Dec 2018 11:24
 Operator : JU/SJ
 Sample : SSTDCCC020
 Misc :
 ALS Vial : 2 Sample Multiplier: 1

Instrument :
 BNA_M
 ClientSampleId :
 SSTD02077

Quant Time: Dec 04 00:12:16 2018
 Quant Method : Z:\SVOASRV\HPCHEM1\BNA_M\METHODS\SOM-EPA-BM111918MA.M
 Quant Title : SVOA CALIBRATION
 QLast Update : Mon Dec 03 00:28:52 2018
 Response via : Initial Calibration

Internal Standards	R.T.	QIon	Response	Conc	Units	Dev(Min)
1) 1,4-Dichlorobenzene-d4	7.58	152	236854	20.00	ng/ul	0.00
18) Naphthalene-d8	10.35	136	1079935	20.00	ng/ul	0.00
35) Acenaphthene-d10	14.23	164	644822	20.00	ng/ul	0.00
61) Phenanthrene-d10	16.99	188	1462923	20.00	ng/ul	0.00
77) Chrysene-d12	21.19	240	1339382	20.00	ng/ul	0.00
85) Perylene-d12	23.37	264	1126127	20.00	ng/ul	0.00

System Monitoring Compounds

3) 1,4-Dioxane-d8	3.18	96	36816	7.11	ng/uL	0.00
5) Phenol-d5	6.77	99	410943	19.00	ng/ul	0.00
7) Bis-(2-Chloroethyl)ether-d	6.93	67	242805	18.61	ng/ul	0.00
9) 2-Chlorophenol-d4	7.12	132	336830	19.90	ng/ul	0.00
13) 4-Methylphenol-d8	8.29	113	341067	19.30	ng/ul	0.00
19) Nitrobenzene-d5	8.73	128	166189	20.04	ng/ul	0.00
22) 2-Nitrophenol-d4	9.45	143	187156	19.69	ng/ul	0.00
26) 2,4-Dichlorophenol-d3	9.98	165	358652	19.82	ng/ul	0.00
29) 4-Chloroaniline-d4	10.50	131	320213	20.62	ng/ul	0.00
43) Dimethylphthalate-d6	13.65	166	1060024	18.95	ng/ul	0.00
46) Acenaphthylene-d8	13.92	160	1369948	20.23	ng/ul	0.00
51) 4-Nitrophenol-d4	14.46	143	177955	17.49	ng/ul	0.00
57) Fluorene-d10	15.23	176	947561	19.61	ng/ul	0.00
62) 4,6-Dinitro-2-methylphenol	15.37	200	185531	17.74	ng/ul	0.00
70) Anthracene-d10	17.09	188	1468004	20.16	ng/ul	0.00
78) Pyrene-d10	19.39	212	1505974	23.24	ng/ul	0.00
89) Benzo(a)pyrene-d12	23.23	264	1235229	20.22	ng/ul	0.00

Target Compounds

					Qvalue
2) 1,4-Dioxane	3.21	88	37967	6.876	ng/uL 96
4) Benzaldehyde	6.75	77	72311	17.927	ng/ul 96
6) Phenol	6.79	94	413671	19.158	ng/ul 97
8) Bis(2-Chloroethyl)ether	7.02	93	316862	19.208	ng/ul 97
10) 2-Chlorophenol	7.15	128	342007	20.225	ng/ul 98
11) 2-Methylphenol	8.03	108	315080	19.126	ng/ul 96
12) 2,2'-oxybis(1-Chloropropan	8.12	45	371593	19.093	ng/ul 99
14) Acetophenone	8.40	105	530967	19.273	ng/ul 99
15) N-Nitroso-di-n-propylamine	8.39	70	272793	18.985	ng/ul 99
16) 4-Methylphenol	8.35	108	343140	19.275	ng/ul 98
17) Hexachloroethane	8.63	117	141566	20.648	ng/ul 98
20) Nitrobenzene	8.77	77	402439	19.329	ng/ul 98
21) Isophorone	9.30	82	743623	19.199	ng/ul 99
23) 2-Nitrophenol	9.48	139	204095	20.634	ng/ul 95
24) 2,4-Dimethylphenol	9.55	107	401113	19.412	ng/ul 99
25) Bis(2-Chloroethoxy)methane	9.78	93	449147	18.950	ng/ul 98
27) 2,4-Dichlorophenol	10.00	162	343146	20.086	ng/ul 99
28) Naphthalene	10.40	128	1122553	19.951	ng/ul 99
30) 4-Chloroaniline	10.52	127	327760	20.690	ng/ul 96
31) Hexachlorobutadiene	10.67	225	225524	19.877	ng/ul 94
32) Caprolactam	11.31	113	67339	11.914	ng/ul 89
33) 4-Chloro-3-methylphenol	11.66	107	375984	19.378	ng/ul 97
34) 2-Methylnaphthalene	12.02	142	827506	19.701	ng/ul 99

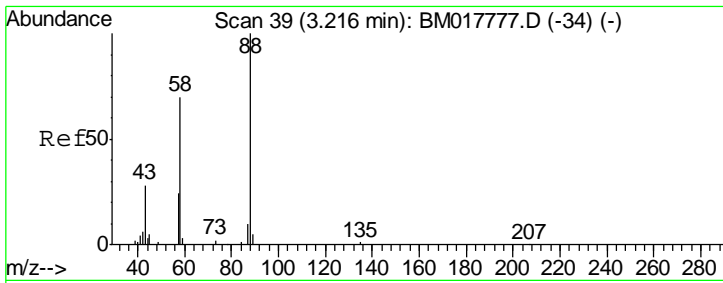
Data File : BM017877.D
 Acq On : 03 Dec 2018 11:24
 Operator : JU/SJ
 Sample : SSTDCCC020
 Misc :
 ALS Vial : 2 Sample Multiplier: 1

Instrument :
 BNA_M
 ClientSampleId :
 SSTD02077

Quant Time: Dec 04 00:12:16 2018
 Quant Method : Z:\SVOASRV\HPCHEM1\BNA_M\METHODS\SOM-EPA-BM111918MA.M
 Quant Title : SVOA CALIBRATION
 QLast Update : Mon Dec 03 00:28:52 2018
 Response via : Initial Calibration

Internal Standards	R.T.	QIon	Response	Conc	Units	Dev(Min)
36) 1,2,4,5-Tetrachlorobenzene	12.39	216	441058	20.499	ng/ul	98
37) Hexachlorocyclopentadiene	12.36	237	228982	16.503	ng/ul	98
38) 2,4,6-Trichlorophenol	12.65	196	283163	20.250	ng/ul	98
39) 2,4,5-Trichlorophenol	12.72	196	302325	20.216	ng/ul	97
40) 1,1'-Biphenyl	13.05	154	1056240	19.899	ng/ul	100
41) 2-Chloronaphthalene	13.09	162	838294	20.189	ng/ul	98
42) 2-Nitroaniline	13.32	65	243928	20.173	ng/ul	97
44) Dimethylphthalate	13.70	163	1042896	19.240	ng/ul	99
45) 2,6-Dinitrotoluene	13.82	165	215857	20.266	ng/ul	99
47) Acenaphthylene	13.95	152	1273818	20.143	ng/ul	100
48) 3-Nitroaniline	14.16	138	201464	19.827	ng/ul	95
49) Acenaphthene	14.29	153	909755	19.961	ng/ul	98
50) 2,4-Dinitrophenol	14.37	184	110006	15.233	ng/ul	95
52) 4-Nitrophenol	14.47	109	149793	17.903	ng/ul	96
53) Dibenzofuran	14.63	168	1263458	19.591	ng/ul	99
54) 2,4-Dinitrotoluene	14.62	165	324090	20.096	ng/ul	97
55) 2,3,4,6-Tetrachlorophenol	14.86	232	275269	19.962	ng/ul	99
56) Diethylphthalate	15.07	149	1081058	19.360	ng/ul	99
58) Fluorene	15.29	166	1057559	19.664	ng/ul	99
59) 4-Chlorophenyl-phenylether	15.29	204	533205	19.301	ng/ul	98
60) 4-Nitroaniline	15.33	138	209722	18.566	ng/ul	99
63) 4,6-Dinitro-2-methylphenol	15.39	198	193748	17.976	ng/ul#	87
64) N-Nitrosodiphenylamine	15.50	169	907274	20.143	ng/ul	97
65) 4-Bromophenyl-phenylether	16.18	248	333060	19.924	ng/ul	96
66) Hexachlorobenzene	16.29	284	368989	19.858	ng/ul	95
67) Atrazine	16.47	200	329376	19.715	ng/ul	98
68) Pentachlorophenol	16.64	266	219619	18.998	ng/ul	98
69) Phenanthrene	17.03	178	1651959	19.746	ng/ul	99
71) Anthracene	17.12	178	1722049	20.128	ng/ul	98
72) 1,2,3,4-Tetrachlorobenzene	13.01	216	427270	20.609	ng/uL	99
73) Pentachlorobenzene	14.55	250	437742	20.644	ng/uL	99
74) Carbazole	17.40	167	1470649	19.508	ng/ul	99
75) Di-n-butylphthalate	17.96	149	1884287	19.778	ng/ul	99
76) Fluoranthene	19.05	202	1892775	19.235	ng/ul	99
79) Pyrene	19.42	202	1912570	23.523	ng/ul	98
80) Butylbenzylphthalate	20.33	149	830560	23.890	ng/ul	98
81) 3,3'-Dichlorobenzidine	21.12	252	547032	19.840	ng/ul	98
82) Benzo(a)anthracene	21.17	228	1668045	20.079	ng/ul	99
83) Bis(2-ethylhexyl)phthalate	21.12	149	1207633	23.457	ng/ul	100
84) Chrysene	21.23	228	1541631	19.842	ng/ul	99
86) Di-n-octyl phthalate	21.98	149	1785316	22.635	ng/ul	100
87) Benzo(b)fluoranthene	22.72	252	1448643	20.695	ng/ul	98
88) Benzo(k)fluoranthene	22.77	252	1359410	19.982	ng/ul	100
90) Benzo(a)pyrene	23.28	252	1333937	20.095	ng/ul	98
91) Indeno(1,2,3-cd)pyrene	25.54	276	1476679	20.995	ng/ul	99
92) Dibenzo(a,h)anthracene	25.55	278	1246603	20.992	ng/ul	98
93) Benzo(g,h,i)perylene	26.20	276	1216870	21.407	ng/ul	98

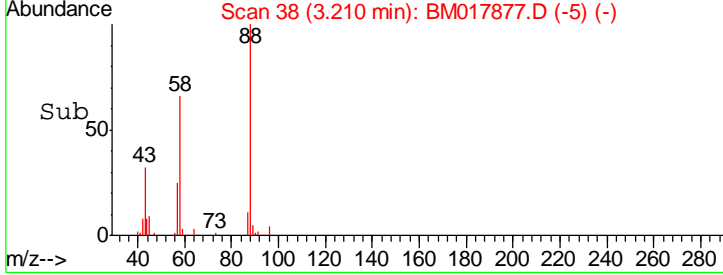
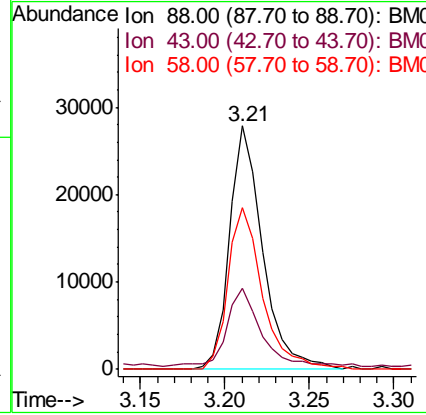
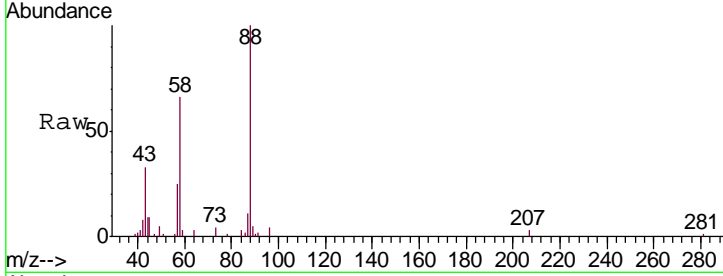
(#) = qualifier out of range (m) = manual integration (+) = signals summed



#2
 1,4-Dioxane
 Concen: 6.876 ng/uL
 RT: 3.21 min Scan# 38
 Delta R.T. -0.01 min
 Lab File: BM017877.D
 Acq: 03 Dec 2018 11:24

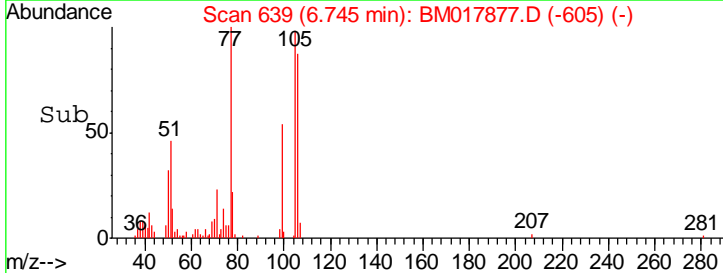
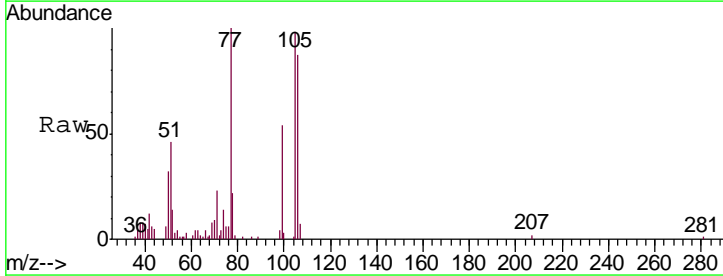
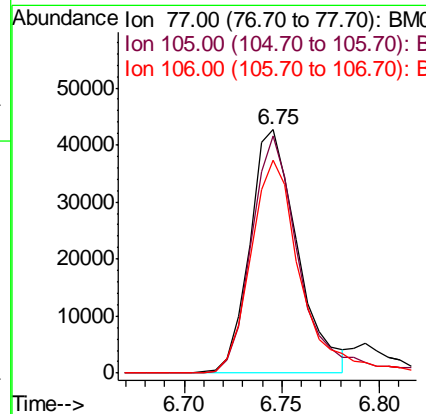
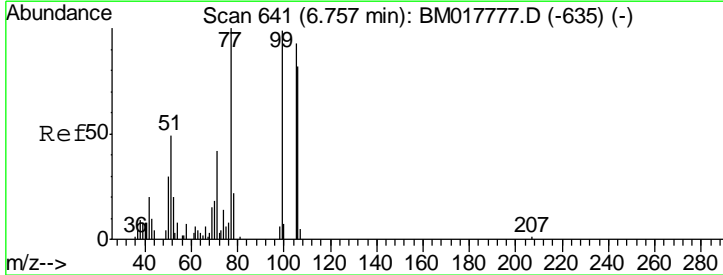
Instrument :
 BNA_M
ClientSampled :
 SSTD02077

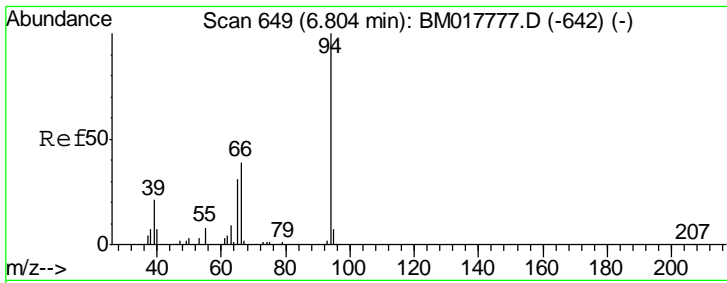
Tgt Ion	Resp	Lower	Upper
88	37967		
43	33.2	27.4	41.0
58	66.4	50.2	75.4



#4
 Benzaldehyde
 Concen: 17.927 ng/ul
 RT: 6.75 min Scan# 639
 Delta R.T. -0.00 min
 Lab File: BM017877.D
 Acq: 03 Dec 2018 11:24

Tgt Ion	Resp	Lower	Upper
77	72311		
105	97.7	74.4	111.6
106	87.3	67.4	101.2

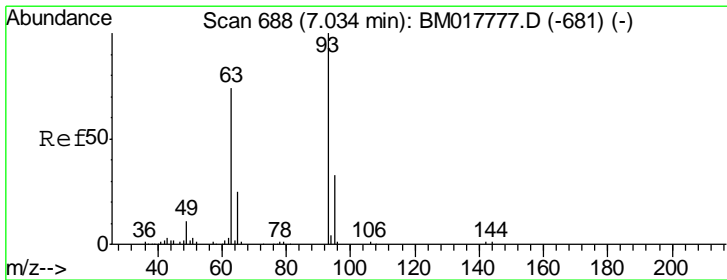
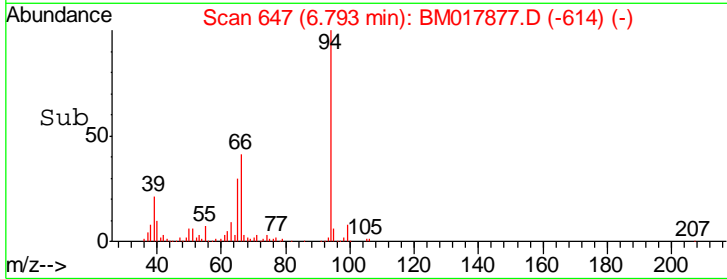
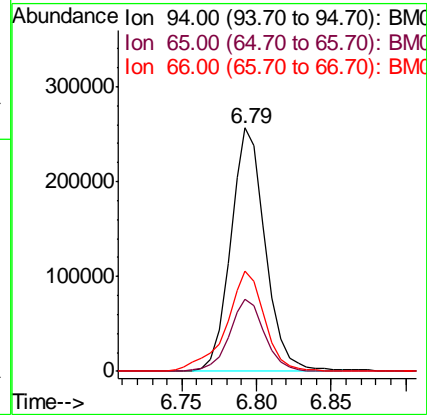
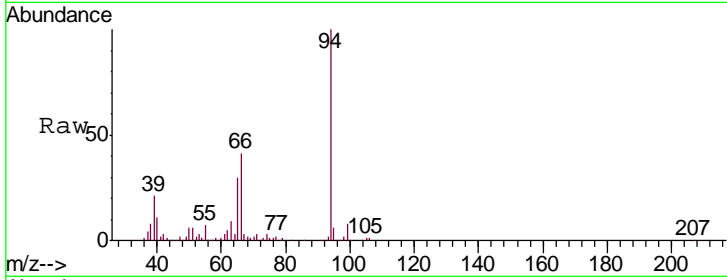




#6
 Phenol
 Concen: 19.158 ng/ul
 RT: 6.79 min Scan# 647
 Delta R.T. -0.01 min
 Lab File: BM017877.D
 Acq: 03 Dec 2018 11:24

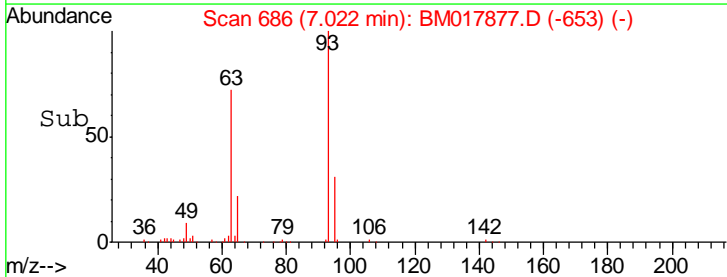
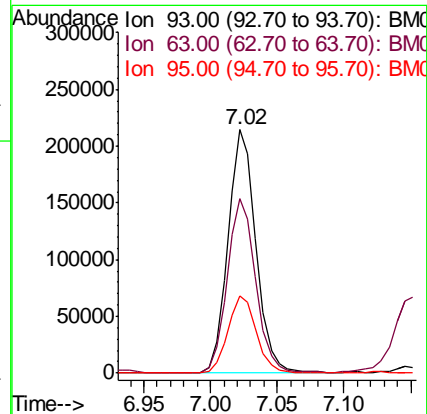
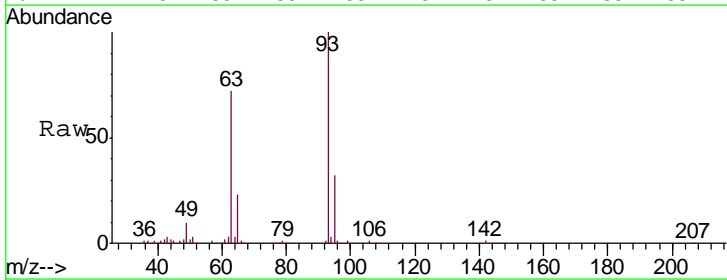
Instrument :
 BNA_M
 ClientSampleId :
 SSTD02077

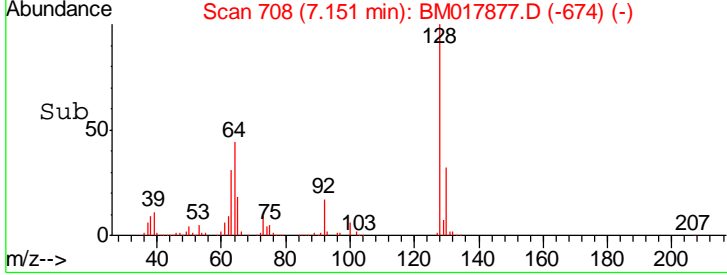
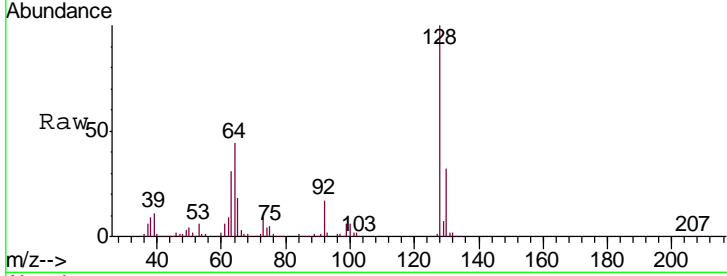
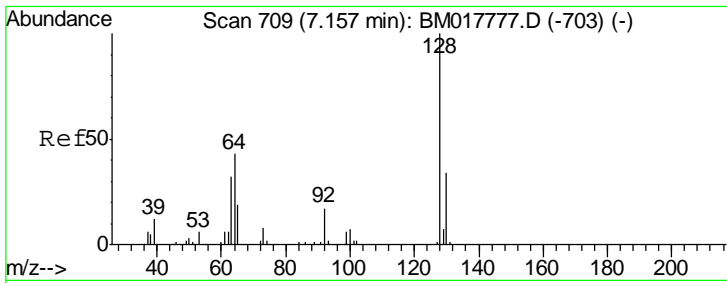
Tgt Ion	Resp	Lower	Upper
94	413671		
65	29.8	24.7	37.1
66	41.3	34.6	51.8



#8
 Bis(2-Chloroethyl)ether
 Concen: 19.208 ng/ul
 RT: 7.02 min Scan# 686
 Delta R.T. -0.01 min
 Lab File: BM017877.D
 Acq: 03 Dec 2018 11:24

Tgt Ion	Resp	Lower	Upper
93	316862		
63	71.9	60.6	90.8
95	31.6	25.4	38.2

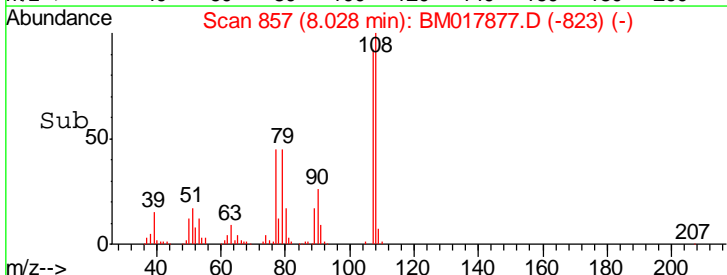
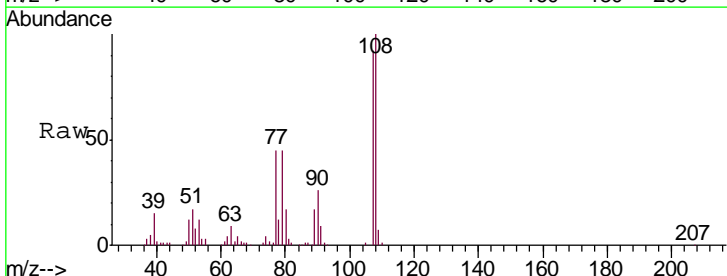
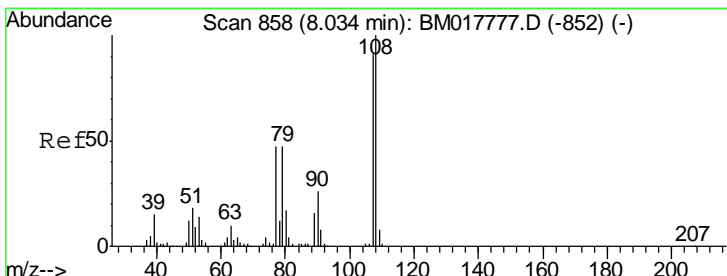
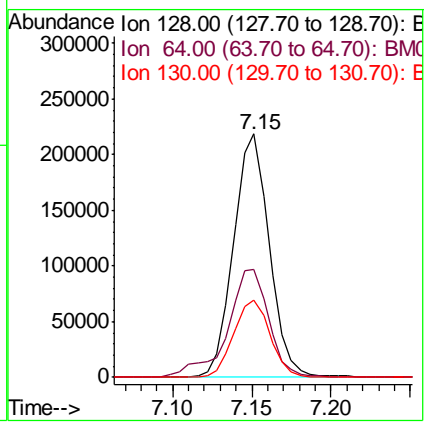




#10
 2-Chlorophenol
 Concen: 20.225 ng/ul
 RT: 7.15 min Scan# 708
 Delta R.T. -0.00 min
 Lab File: BM017877.D
 Acq: 03 Dec 2018 11:24

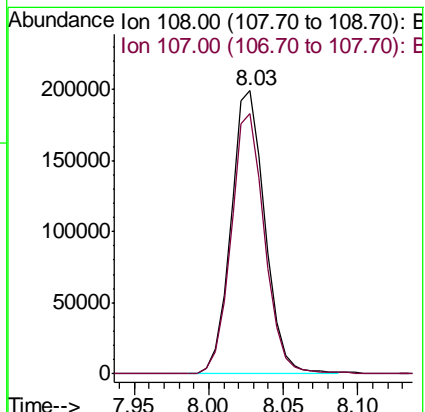
Instrument :
 BNA_M
ClientSampled :
 SSTD02077

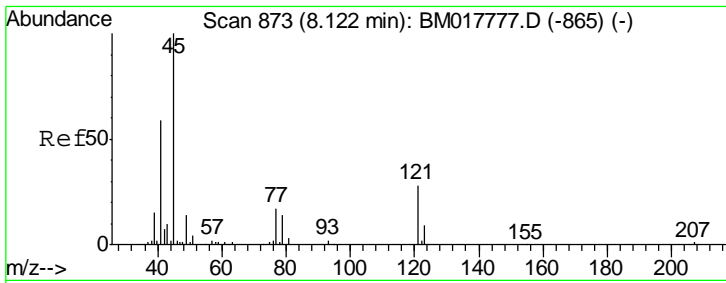
Tgt Ion	Resp	Lower	Upper
128	342007		
64	44.3	36.8	55.2
130	31.7	25.0	37.4



#11
 2-Methylphenol
 Concen: 19.126 ng/ul
 RT: 8.03 min Scan# 857
 Delta R.T. -0.00 min
 Lab File: BM017877.D
 Acq: 03 Dec 2018 11:24

Tgt Ion	Resp	Lower	Upper
108	315080		
107	92.1	70.8	106.2

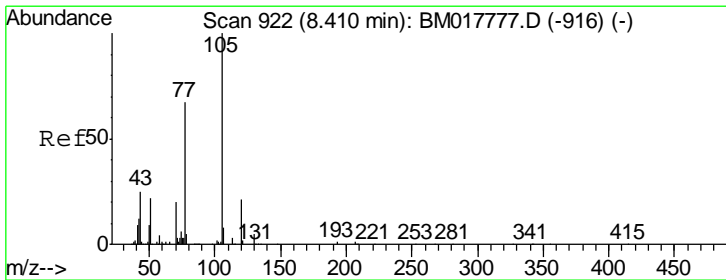
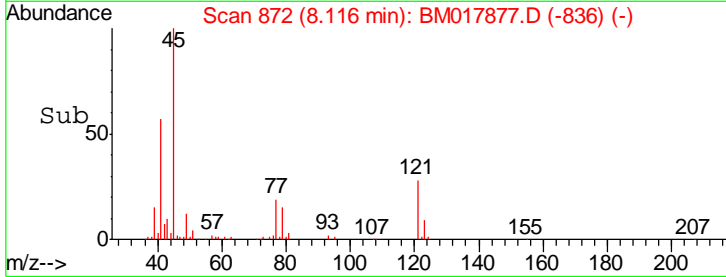
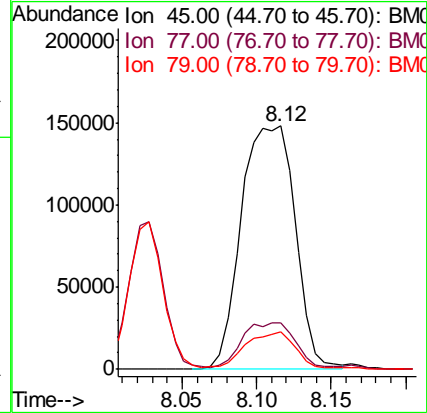
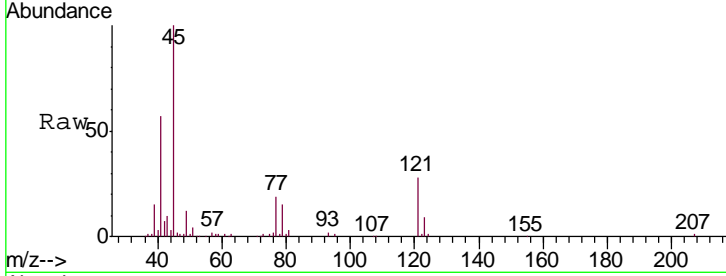




#12
 2,2'-oxybis(1-Chloropropane)
 Concen: 19.093 ng/ul
 RT: 8.12 min Scan# 872
 Delta R.T. 0.01 min
 Lab File: BM017877.D
 Acq: 03 Dec 2018 11:24

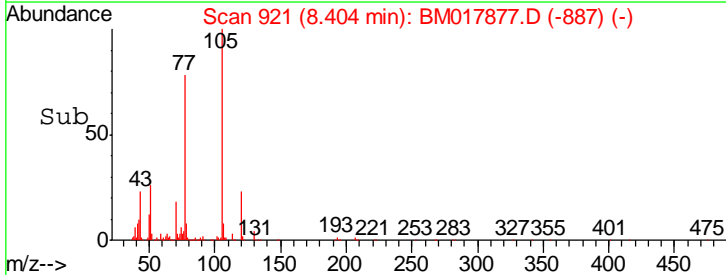
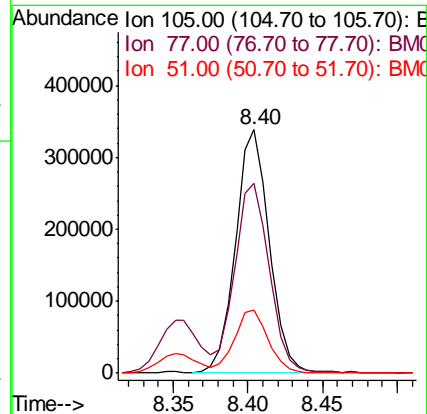
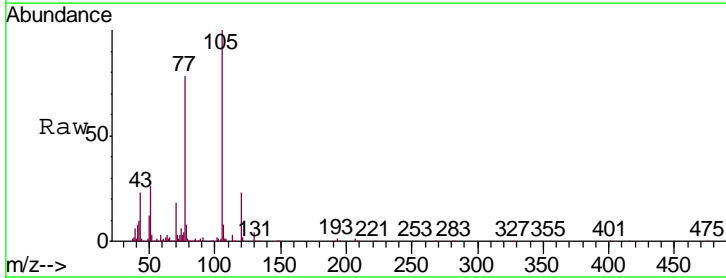
Instrument :
 BNA_M
 ClientSampled :
 SST02077

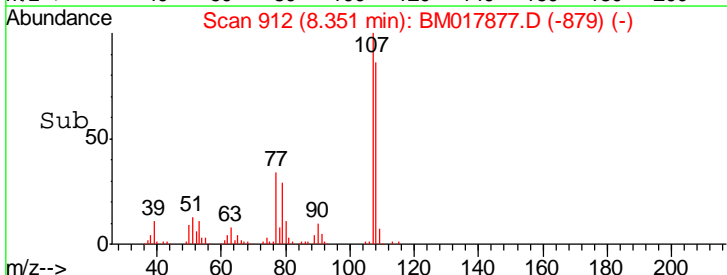
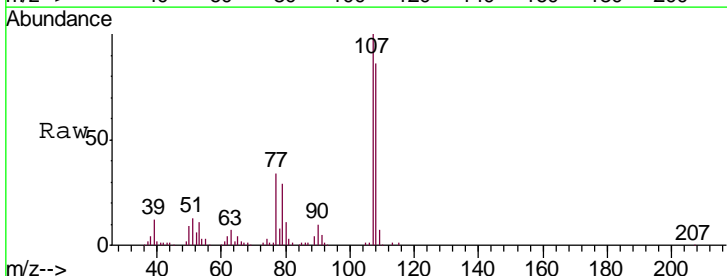
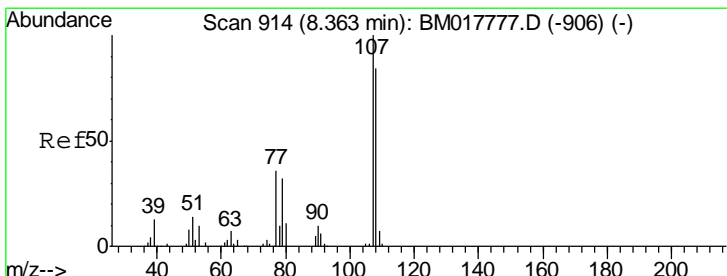
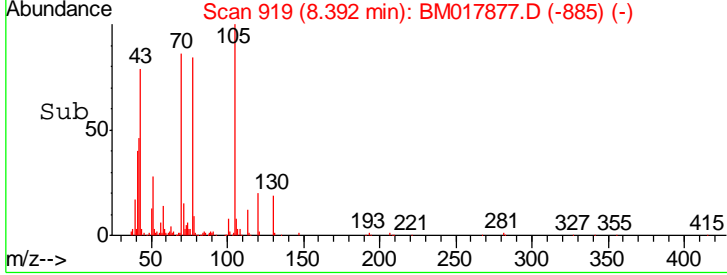
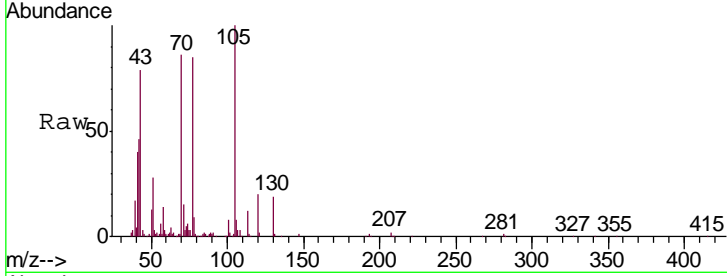
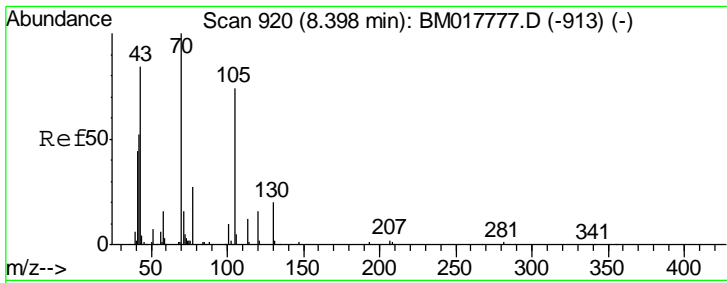
Tgt Ion	Resp	Lower	Upper
45	371593		
77	18.9	15.3	22.9
79	15.2	11.4	17.0



#14
 Acetophenone
 Concen: 19.273 ng/ul
 RT: 8.40 min Scan# 921
 Delta R.T. -0.00 min
 Lab File: BM017877.D
 Acq: 03 Dec 2018 11:24

Tgt Ion	Resp	Lower	Upper
105	530967		
77	78.1	63.0	94.6
51	25.8	21.3	31.9

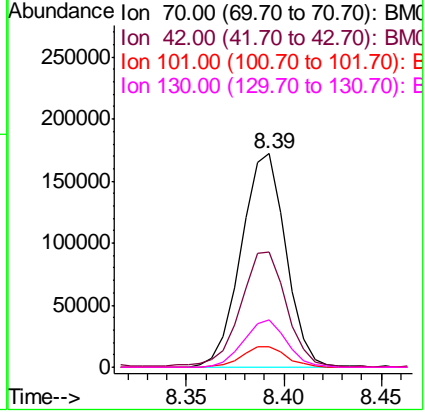




#15
 N-Nitroso-di-n-propylamine
 Concen: 18.985 ng/ul
 RT: 8.39 min Scan# 919
 Delta R.T. -0.00 min
 Lab File: BM017877.D
 Acq: 03 Dec 2018 11:24

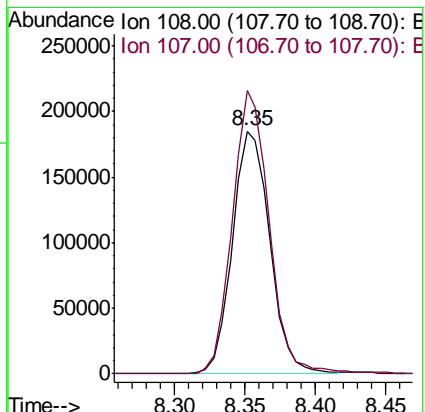
Instrument :
 BNA_M
ClientSampled :
 SSTD02077

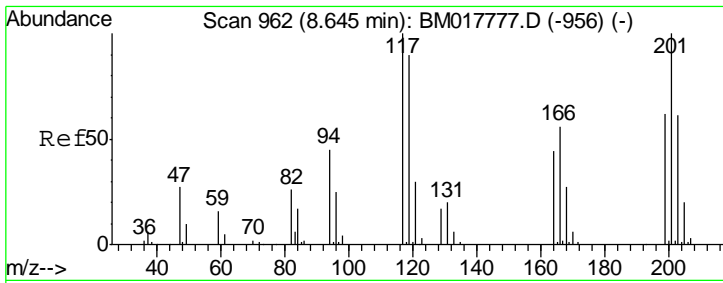
Tgt Ion	Resp	Lower	Upper
70	100		
42	53.7	42.7	64.1
101	9.6	7.6	11.4
130	21.9	16.7	25.1



#16
 4-Methylphenol
 Concen: 19.275 ng/ul
 RT: 8.35 min Scan# 912
 Delta R.T. -0.01 min
 Lab File: BM017877.D
 Acq: 03 Dec 2018 11:24

Tgt Ion	Resp	Lower	Upper
108	100		
107	116.6	91.3	136.9

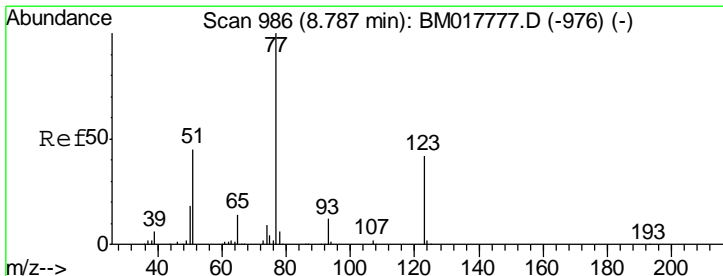
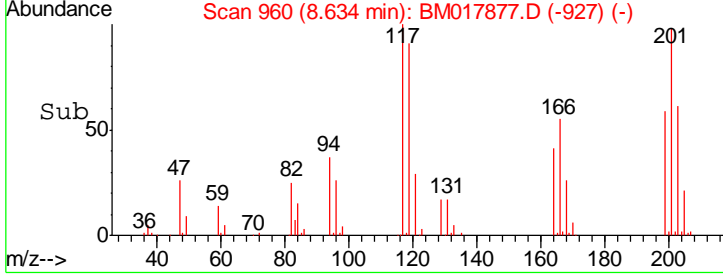
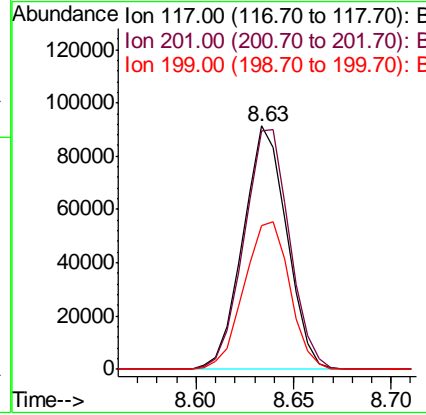
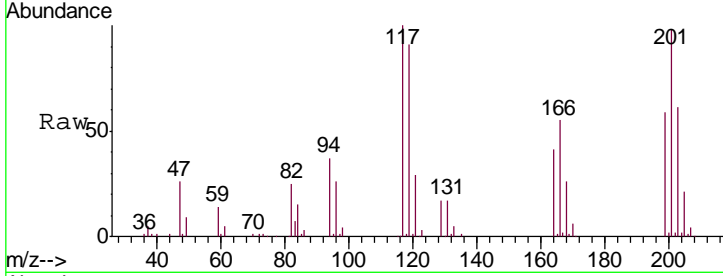




#17
 Hexachloroethane
 Concen: 20.648 ng/ul
 RT: 8.63 min Scan# 960
 Delta R.T. -0.01 min
 Lab File: BM017877.D
 Acq: 03 Dec 2018 11:24

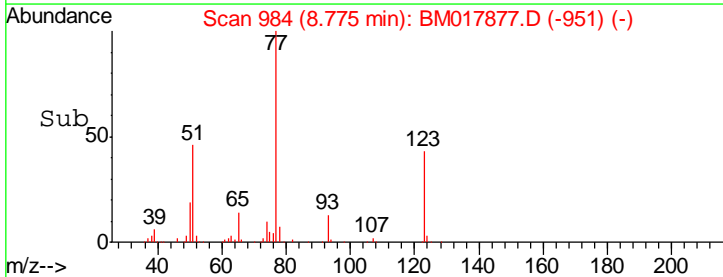
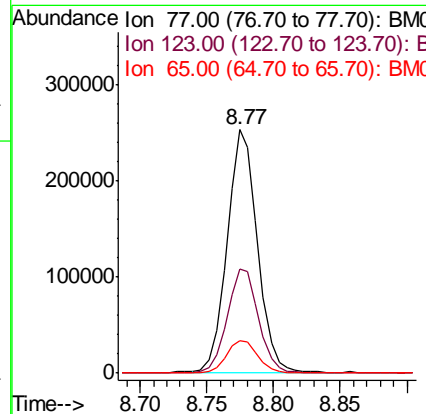
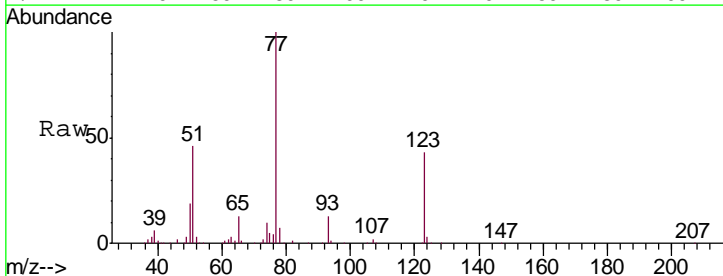
Instrument :
 BNA_M
ClientSampleId :
 SSTD02077

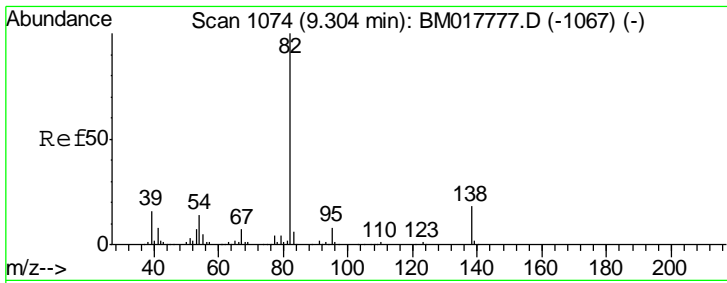
Tgt Ion	Resp	Lower	Upper
117	141566		
201	98.2	78.2	117.2
199	58.9	49.5	74.3



#20
 Nitrobenzene
 Concen: 19.329 ng/ul
 RT: 8.77 min Scan# 984
 Delta R.T. -0.01 min
 Lab File: BM017877.D
 Acq: 03 Dec 2018 11:24

Tgt Ion	Resp	Lower	Upper
77	402439		
123	42.7	33.1	49.7
65	13.5	11.0	16.6

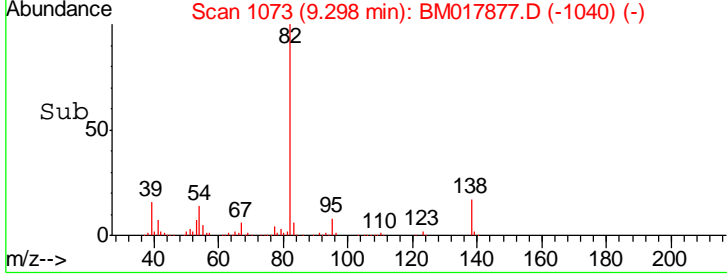
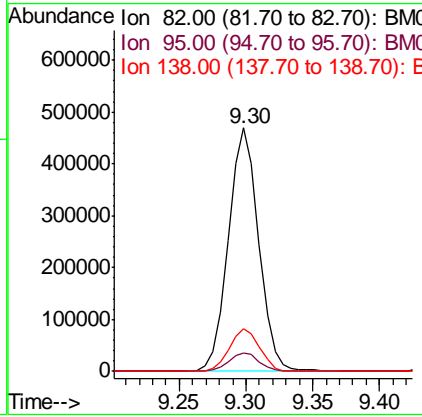
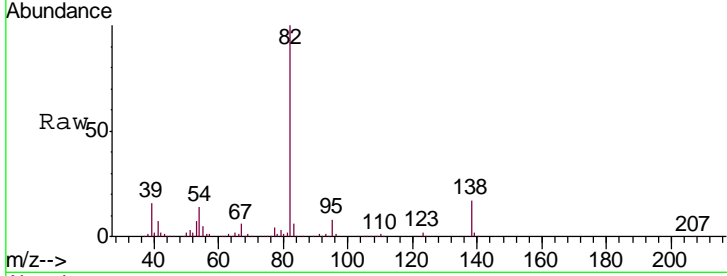




#21
 Isophorone
 Concen: 19.199 ng/ul
 RT: 9.30 min Scan# 1073
 Delta R.T. -0.01 min
 Lab File: BM017877.D
 Acq: 03 Dec 2018 11:24

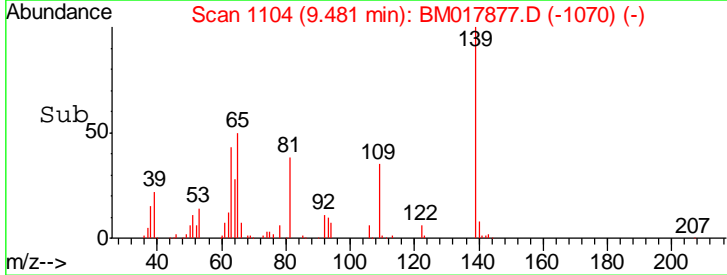
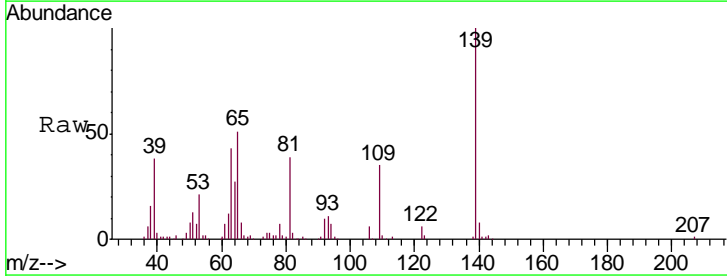
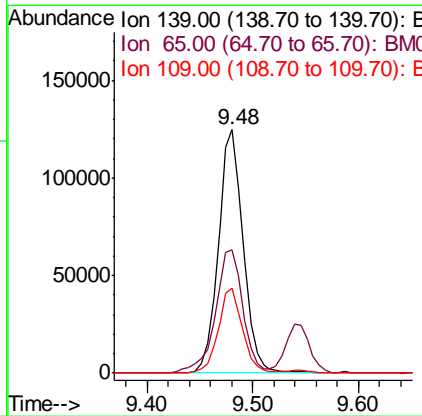
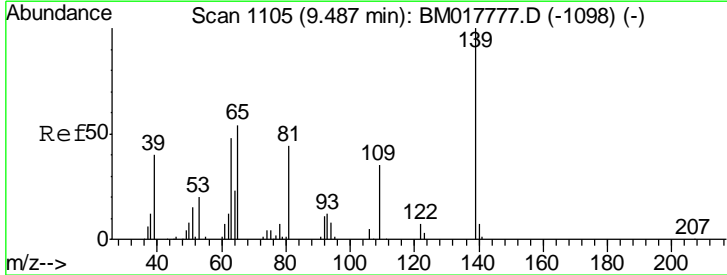
Instrument :
 BNA_M
ClientSampled :
 SSTD02077

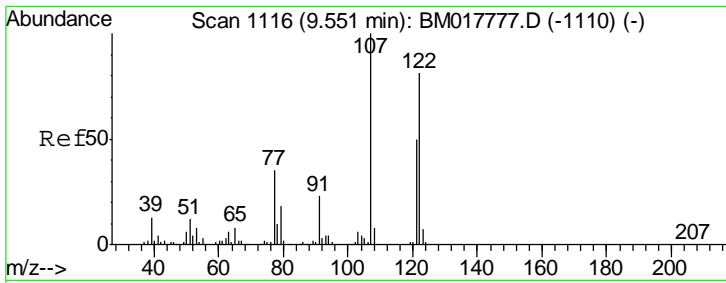
Tgt Ion	Resp	Lower	Upper
82	100		
95	7.6	6.1	9.1
138	17.3	14.2	21.2



#23
 2-Nitrophenol
 Concen: 20.634 ng/ul
 RT: 9.48 min Scan# 1104
 Delta R.T. -0.00 min
 Lab File: BM017877.D
 Acq: 03 Dec 2018 11:24

Tgt Ion	Resp	Lower	Upper
139	100		
65	50.8	44.2	66.4
109	34.9	26.4	39.6

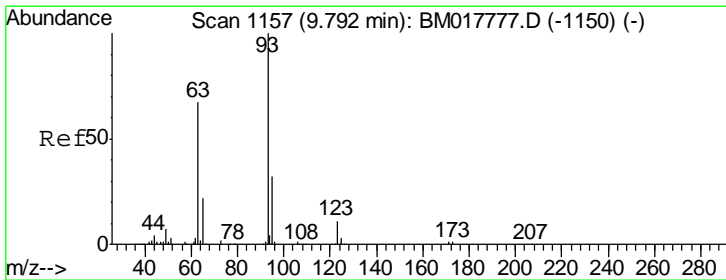
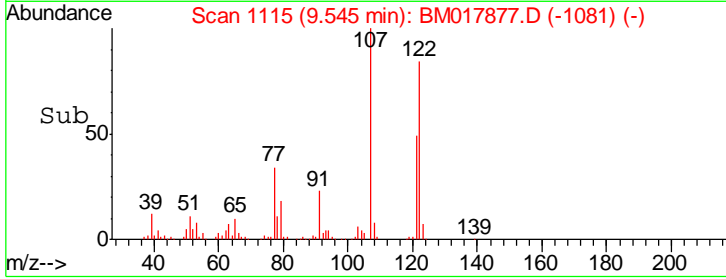
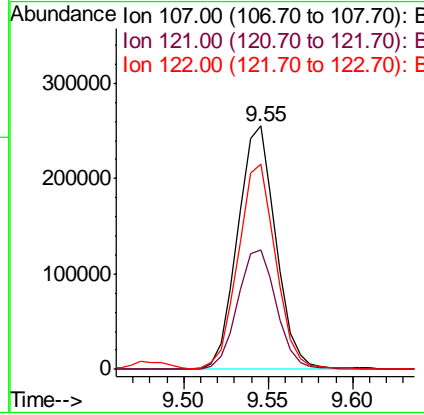
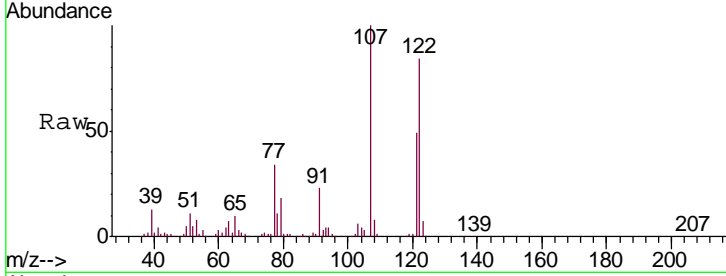




#24
 2,4-Dimethylphenol
 Concen: 19.412 ng/ul
 RT: 9.55 min Scan# 1115
 Delta R.T. -0.00 min
 Lab File: BM017877.D
 Acq: 03 Dec 2018 11:24

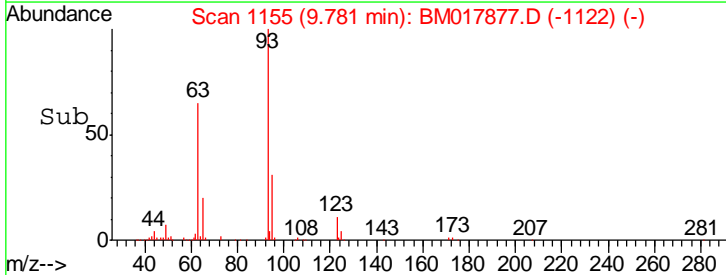
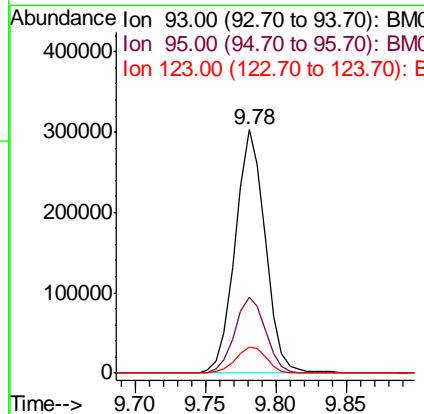
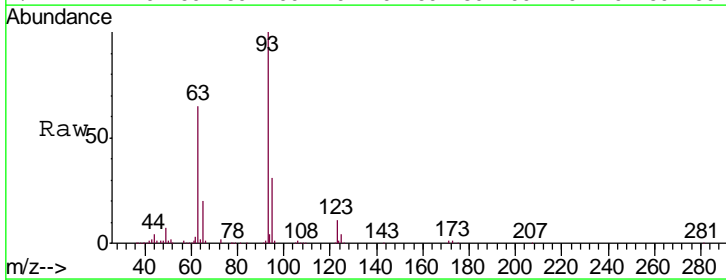
Instrument :
 BNA_M
 ClientSampled :
 SSTD02077

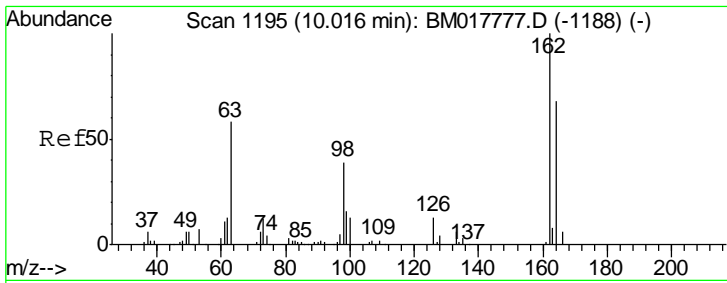
Tgt Ion	Resp	Lower	Upper
107	401113		
107	100		
121	49.2	39.6	59.4
122	84.4	68.1	102.1



#25
 Bis(2-Chloroethoxy)methane
 Concen: 18.950 ng/ul
 RT: 9.78 min Scan# 1155
 Delta R.T. -0.01 min
 Lab File: BM017877.D
 Acq: 03 Dec 2018 11:24

Tgt Ion	Resp	Lower	Upper
93	449147		
93	100		
95	31.3	26.0	39.0
123	10.8	9.0	13.4

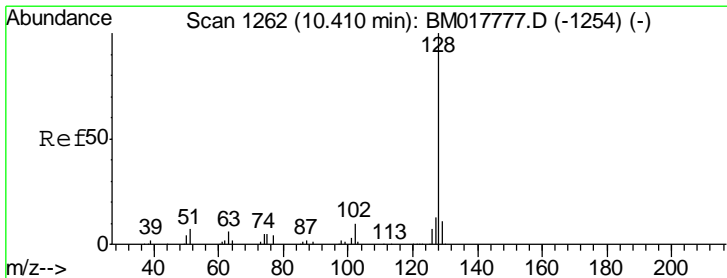
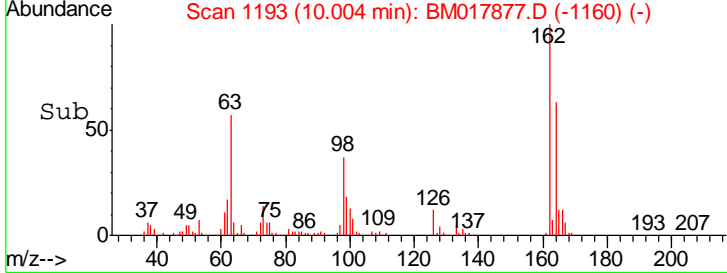
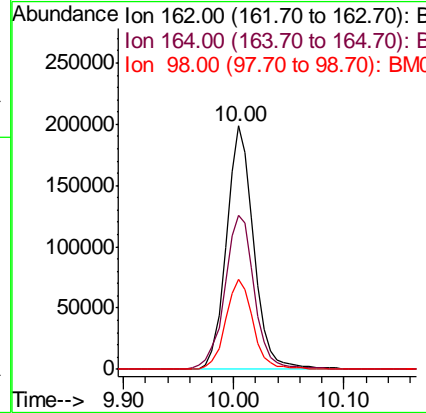
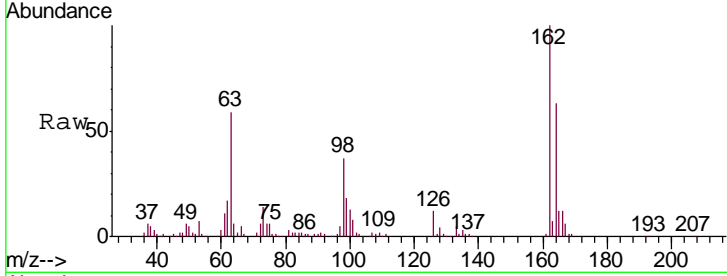




#27
 2,4-Dichlorophenol
 Concen: 20.086 ng/ul
 RT: 10.00 min Scan# 1193
 Delta R.T. -0.01 min
 Lab File: BM017877.D
 Acq: 03 Dec 2018 11:24

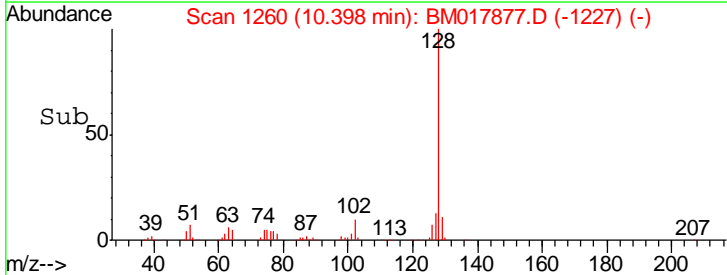
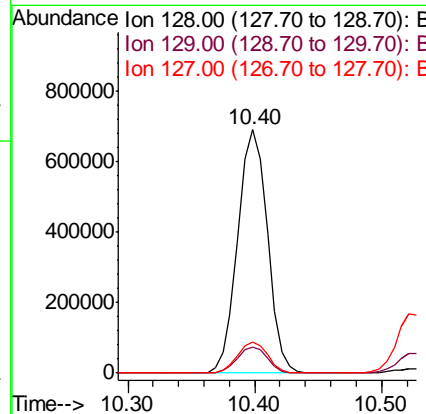
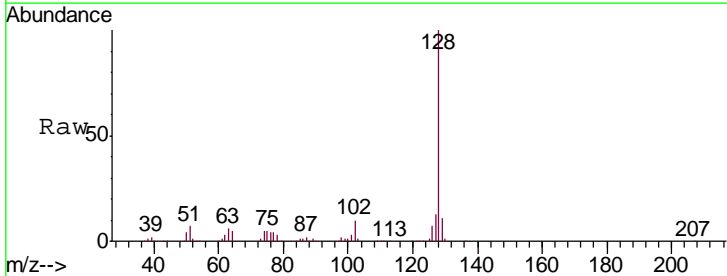
Instrument :
 BNA_M
 ClientSampleID :
 SSTD02077

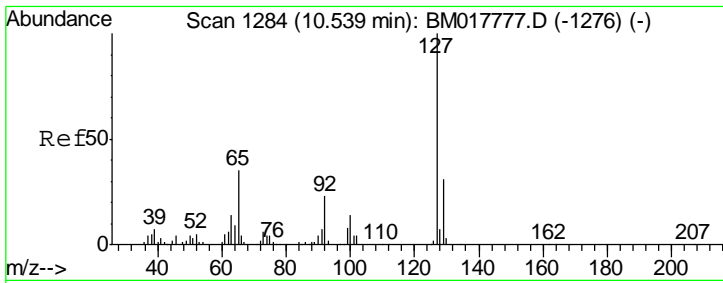
Tgt Ion	Resp	Lower	Upper
162	100		
164	63.4	51.8	77.8
98	36.8	29.0	43.6



#28
 Naphthalene
 Concen: 19.951 ng/ul
 RT: 10.40 min Scan# 1260
 Delta R.T. -0.01 min
 Lab File: BM017877.D
 Acq: 03 Dec 2018 11:24

Tgt Ion	Resp	Lower	Upper
128	100		
129	10.7	8.6	12.8
127	12.9	10.8	16.2

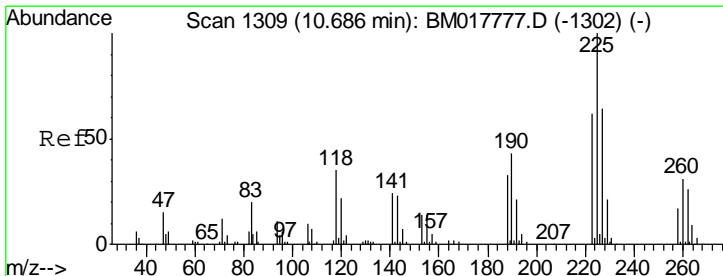
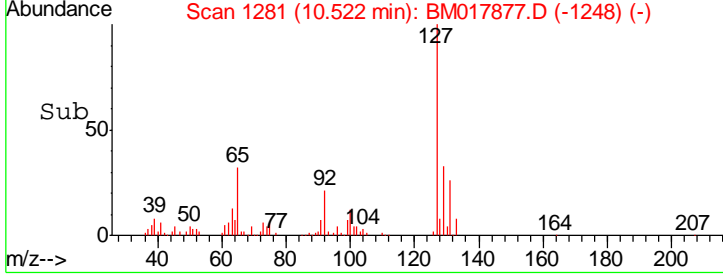
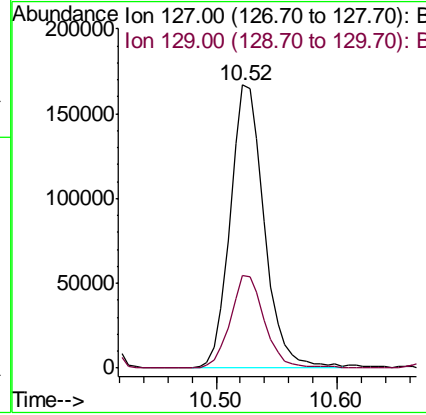
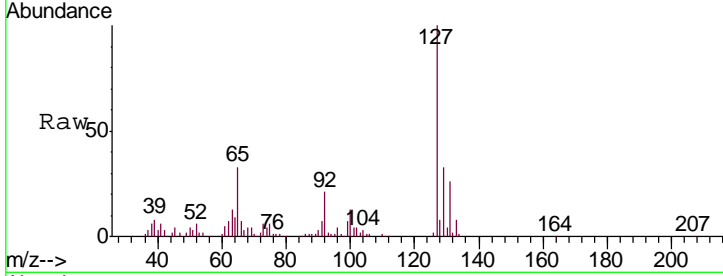




#30
 4-Chloroaniline
 Concen: 20.690 ng/ul
 RT: 10.52 min Scan# 1281
 Delta R.T. -0.01 min
 Lab File: BM017877.D
 Acq: 03 Dec 2018 11:24

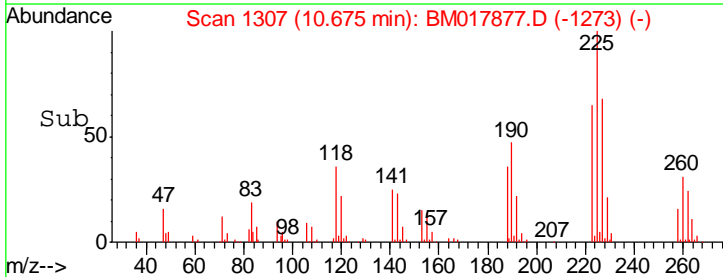
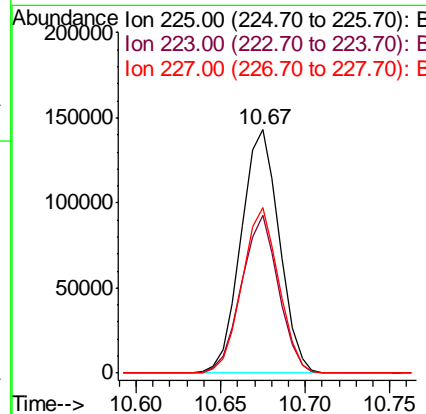
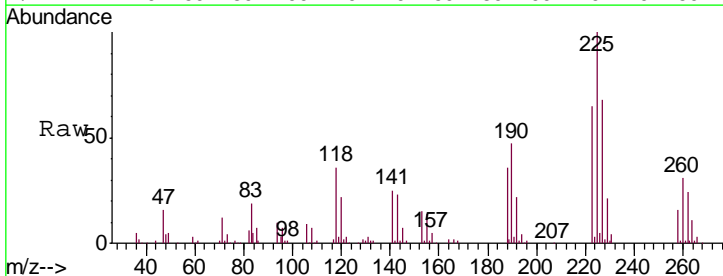
Instrument :
 BNA_M
ClientSampled :
 SSTD02077

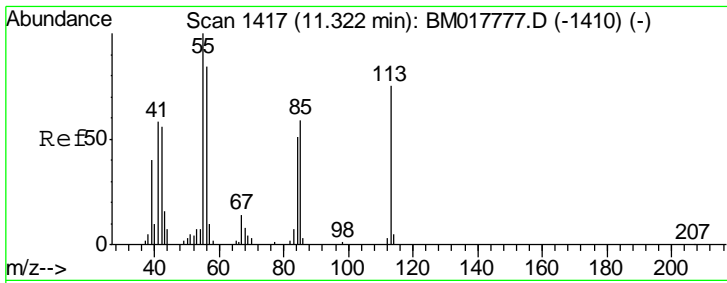
Tgt Ion	Resp	Lower	Upper
127	100		
129	32.8	24.6	37.0



#31
 Hexachlorobutadiene
 Concen: 19.877 ng/ul
 RT: 10.67 min Scan# 1307
 Delta R.T. -0.00 min
 Lab File: BM017877.D
 Acq: 03 Dec 2018 11:24

Tgt Ion	Resp	Lower	Upper
225	100		
223	64.9	48.8	73.2
227	68.2	50.3	75.5

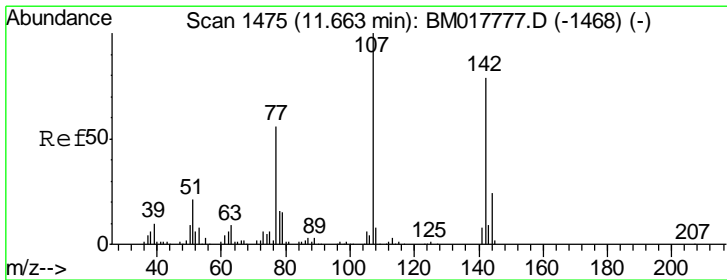
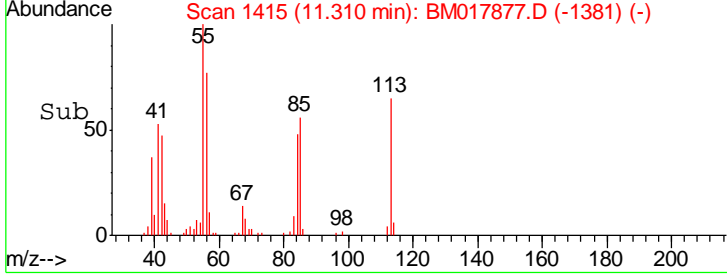
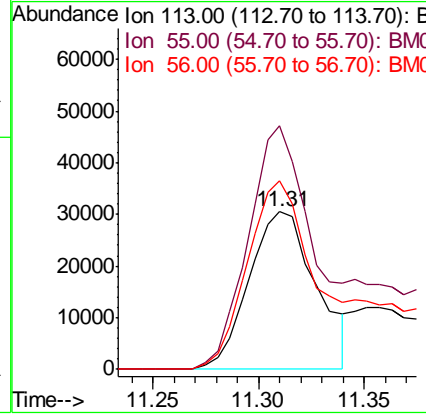
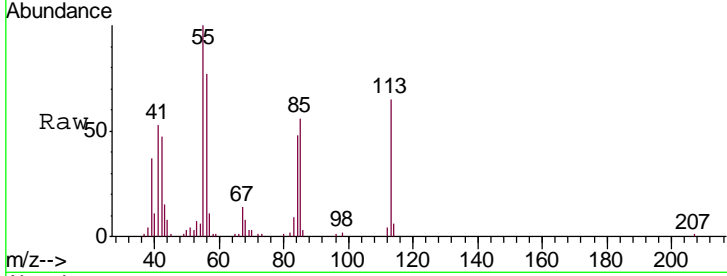




#32
 Caprolactam
 Concen: 11.914 ng/ul
 RT: 11.31 min Scan# 1415
 Delta R.T. -0.00 min
 Lab File: BM017877.D
 Acq: 03 Dec 2018 11:24

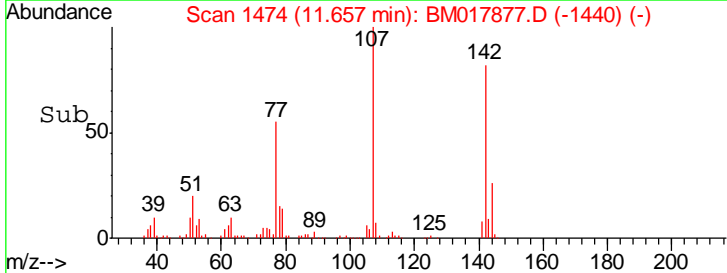
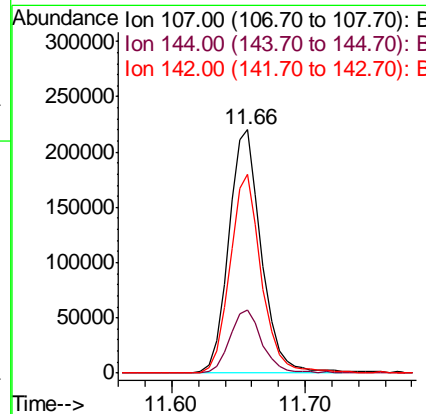
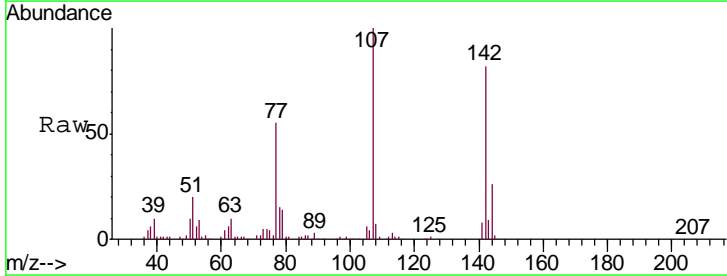
Instrument :
 BNA_M
 ClientSampleId :
 SSTD02077

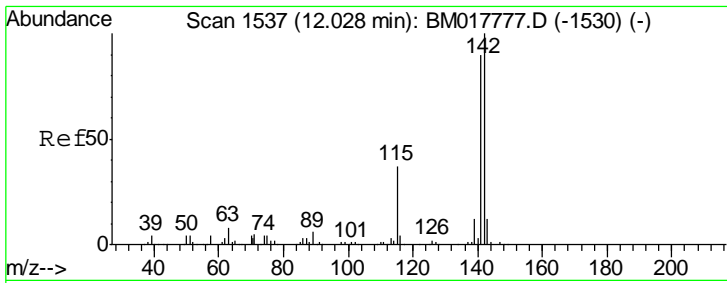
Tgt Ion	Resp	Lower	Upper
113	67339		
55	154.3	110.6	166.0
56	119.3	88.2	132.4



#33
 4-Chloro-3-methylphenol
 Concen: 19.378 ng/ul
 RT: 11.66 min Scan# 1474
 Delta R.T. -0.00 min
 Lab File: BM017877.D
 Acq: 03 Dec 2018 11:24

Tgt Ion	Resp	Lower	Upper
107	375984		
144	26.2	21.1	31.7
142	81.9	63.0	94.6

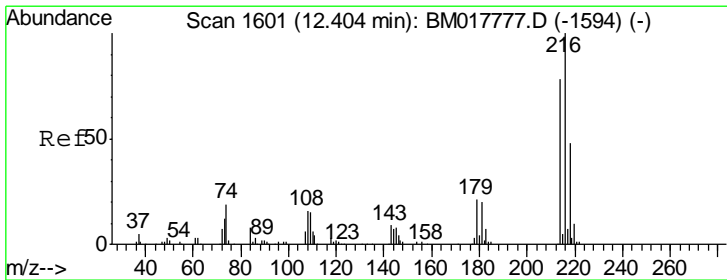
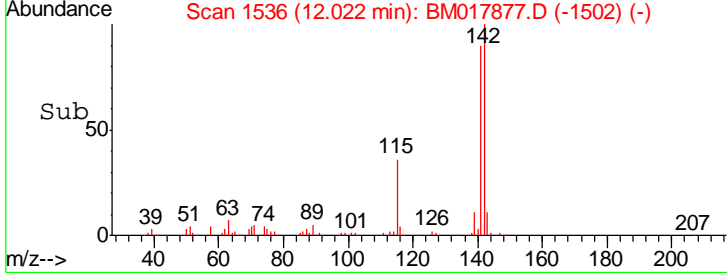
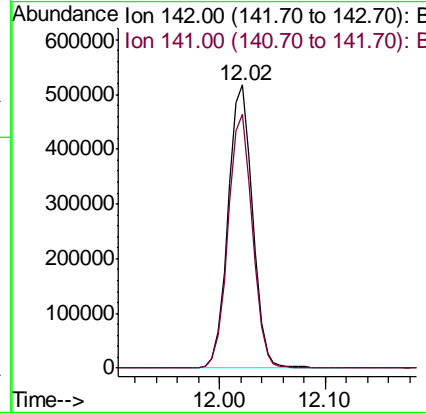
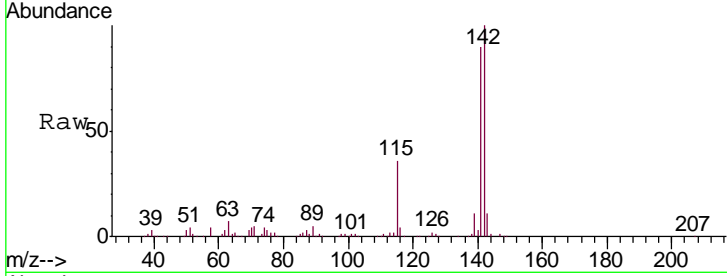




#34
 2-Methylnaphthalene
 Concen: 19.701 ng/ul
 RT: 12.02 min Scan# 1536
 Delta R.T. -0.00 min
 Lab File: BM017877.D
 Acq: 03 Dec 2018 11:24

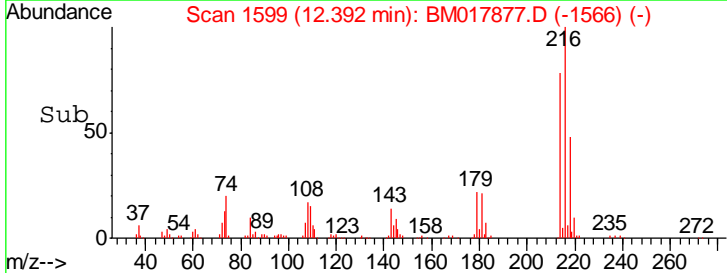
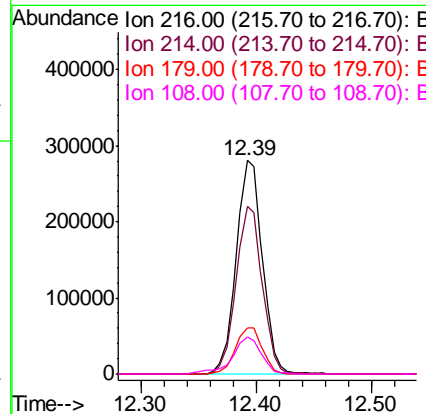
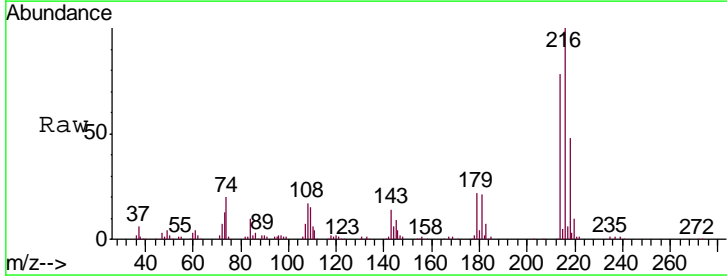
Instrument :
 BNA_M
 ClientSampleId :
 SSTD02077

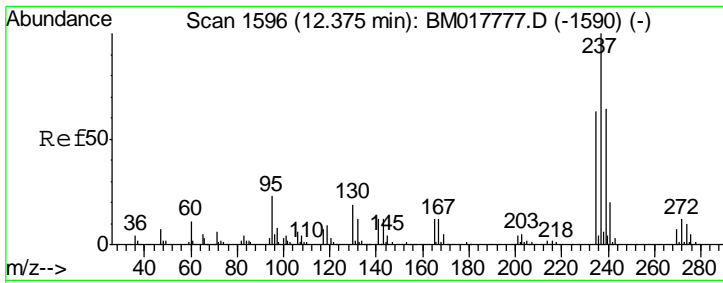
Tgt Ion: 142 Resp: 827506
 Ion Ratio Lower Upper
 142 100
 141 89.9 72.6 108.8



#36
 1,2,4,5-Tetrachlorobenzene
 Concen: 20.499 ng/ul
 RT: 12.39 min Scan# 1599
 Delta R.T. -0.01 min
 Lab File: BM017877.D
 Acq: 03 Dec 2018 11:24

Tgt Ion: 216 Resp: 441058
 Ion Ratio Lower Upper
 216 100
 214 78.4 61.3 91.9
 179 21.8 17.0 25.4
 108 17.4 12.8 19.2

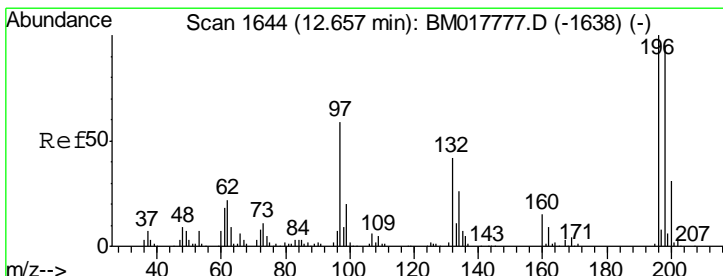
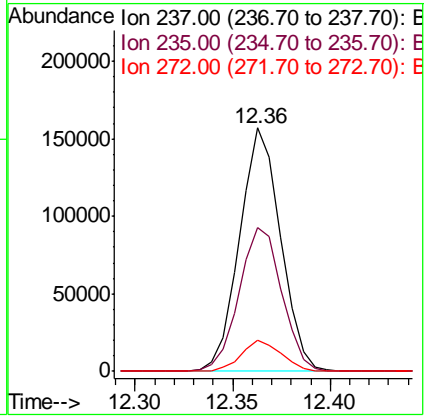
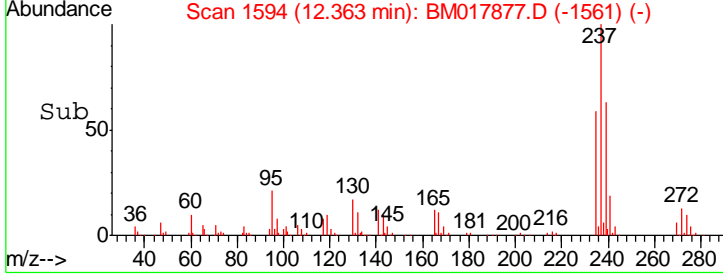
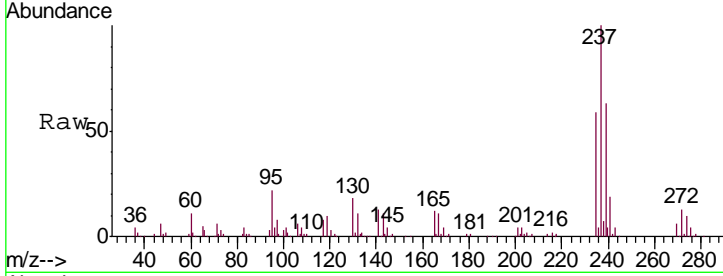




#37
 Hexachlorocyclopentadiene
 Concen: 16.503 ng/ul
 RT: 12.36 min Scan# 1594
 Delta R.T. -0.01 min
 Lab File: BM017877.D
 Acq: 03 Dec 2018 11:24

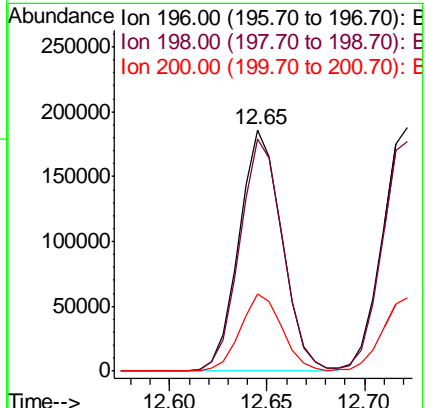
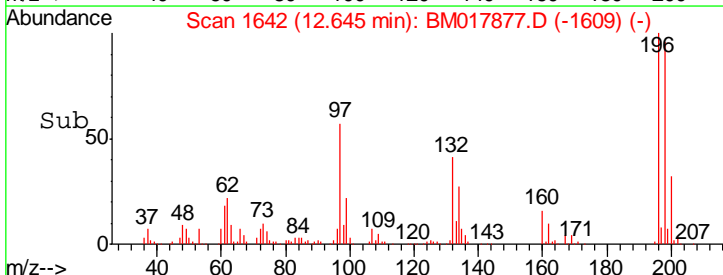
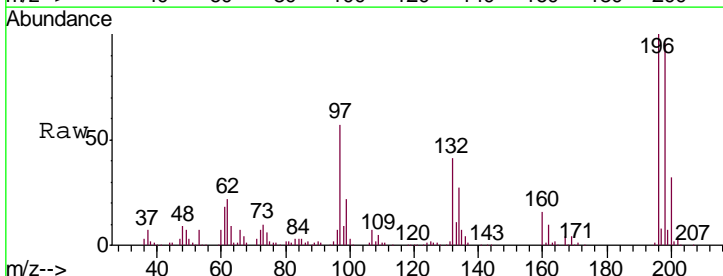
Instrument :
 BNA_M
 ClientSampleID :
 SST02077

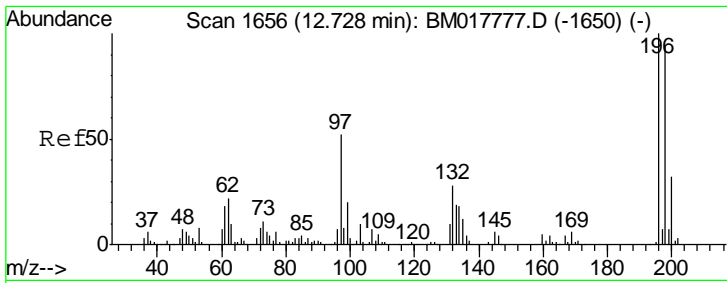
Tgt Ion	Resp	Lower	Upper
237	100		
235	59.1	48.6	73.0
272	12.7	9.4	14.0



#38
 2,4,6-Trichlorophenol
 Concen: 20.250 ng/ul
 RT: 12.65 min Scan# 1642
 Delta R.T. -0.01 min
 Lab File: BM017877.D
 Acq: 03 Dec 2018 11:24

Tgt Ion	Resp	Lower	Upper
196	100		
198	96.0	74.9	112.3
200	31.9	25.4	38.2

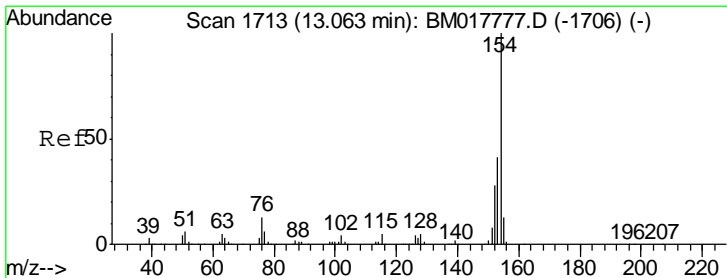
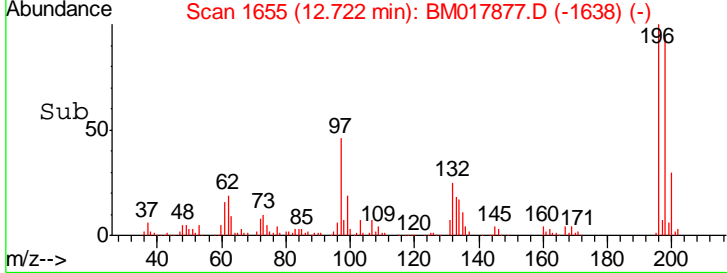
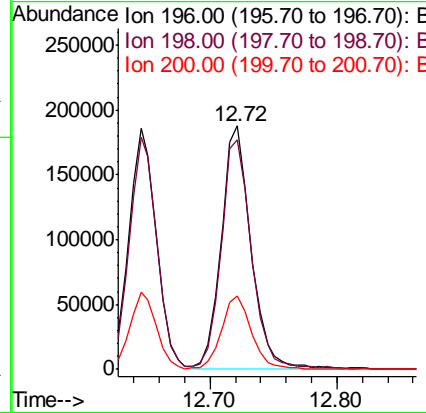
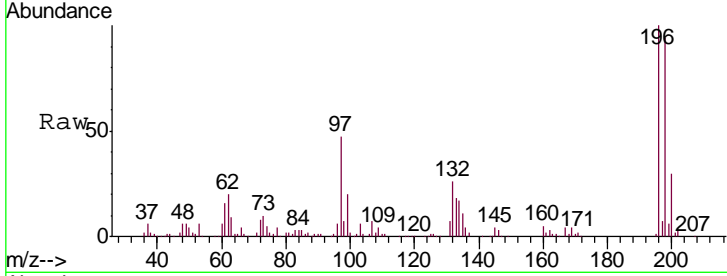




#39
 2,4,5-Trichlorophenol
 Concen: 20.216 ng/ul
 RT: 12.72 min Scan# 1655
 Delta R.T. -0.00 min
 Lab File: BM017877.D
 Acq: 03 Dec 2018 11:24

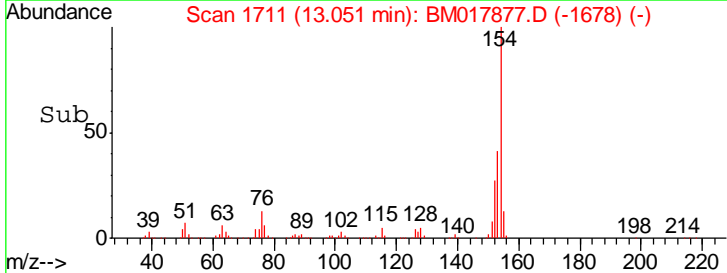
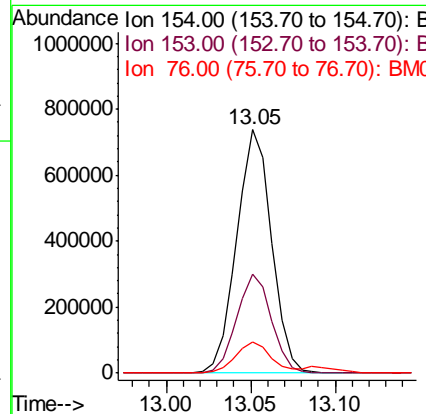
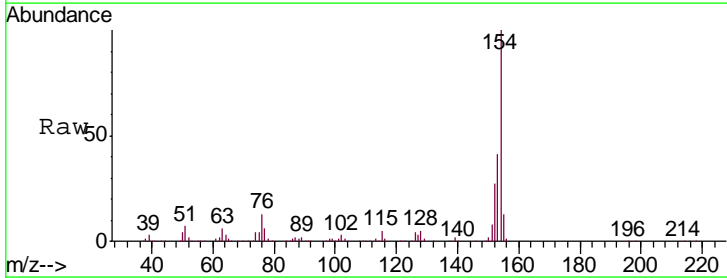
Instrument :
 BNA_M
 ClientSampled :
 SST02077

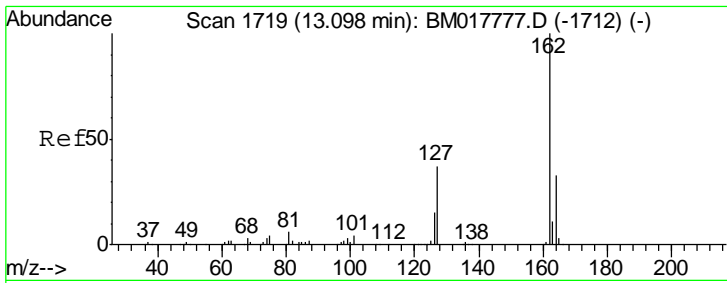
Tgt Ion	Resp	Lower	Upper
196	100		
198	94.3	77.2	115.8
200	30.1	25.8	38.8



#40
 1,1'-Biphenyl
 Concen: 19.899 ng/ul
 RT: 13.05 min Scan# 1711
 Delta R.T. -0.01 min
 Lab File: BM017877.D
 Acq: 03 Dec 2018 11:24

Tgt Ion	Resp	Lower	Upper
154	100		
153	40.6	32.5	48.7
76	12.9	10.6	15.8

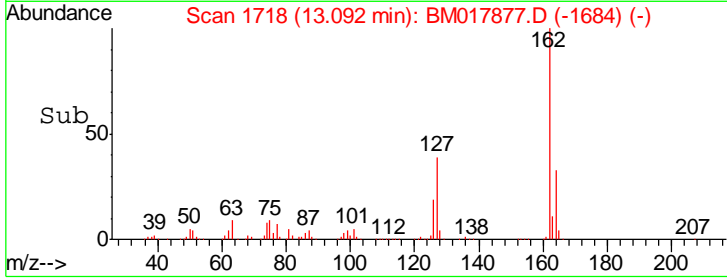
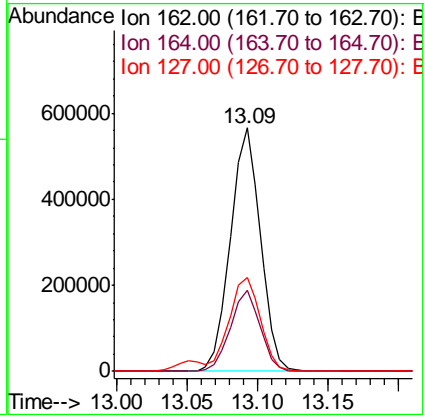
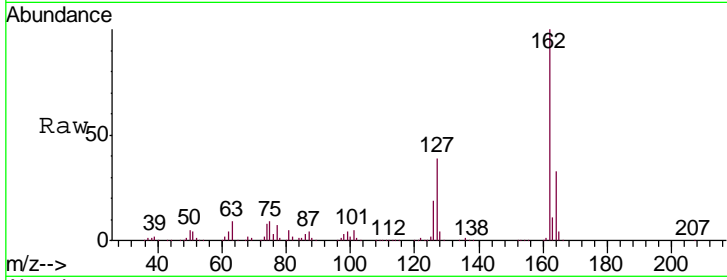




#41
 2-Chloronaphthalene
 Concen: 20.189 ng/ul
 RT: 13.09 min Scan# 1718
 Delta R.T. -0.00 min
 Lab File: BM017877.D
 Acq: 03 Dec 2018 11:24

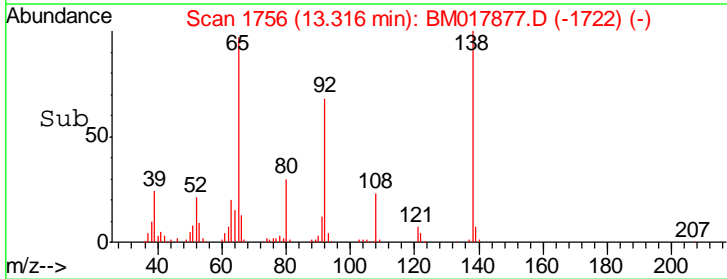
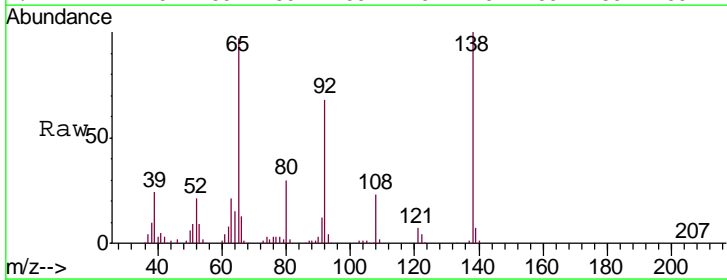
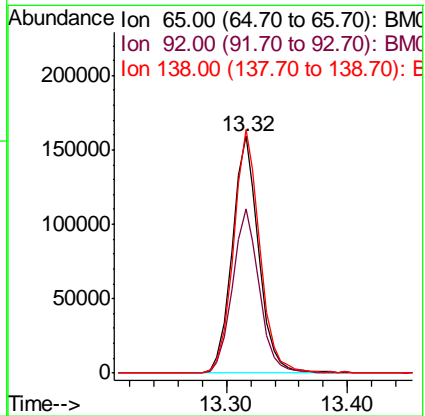
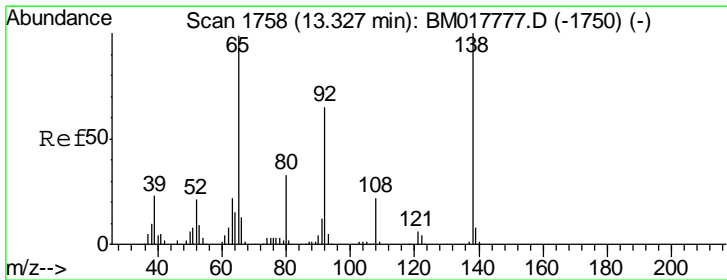
Instrument :
 BNA_M
Client Sampled :
 SSTD02077

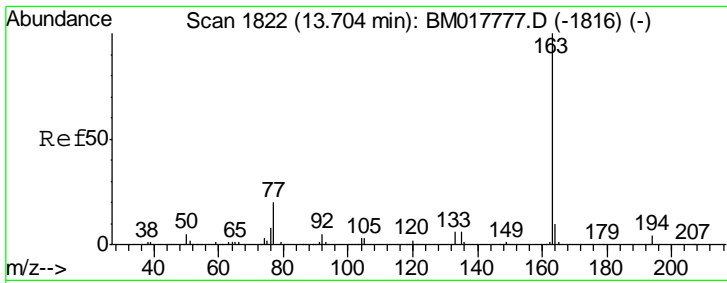
Tgt Ion	Resp	Lower	Upper
162	100		
164	33.4	26.1	39.1
127	38.7	31.8	47.8



#42
 2-Nitroaniline
 Concen: 20.173 ng/ul
 RT: 13.32 min Scan# 1756
 Delta R.T. -0.00 min
 Lab File: BM017877.D
 Acq: 03 Dec 2018 11:24

Tgt Ion	Resp	Lower	Upper
65	100		
92	69.5	56.3	84.5
138	102.8	85.4	128.0



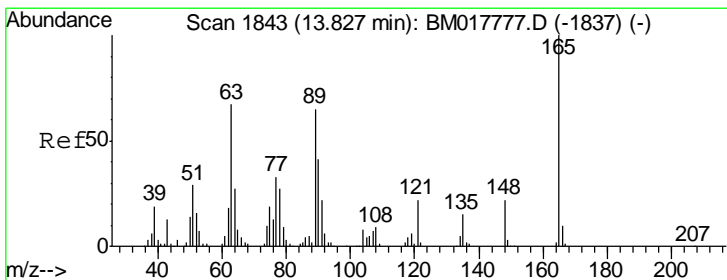
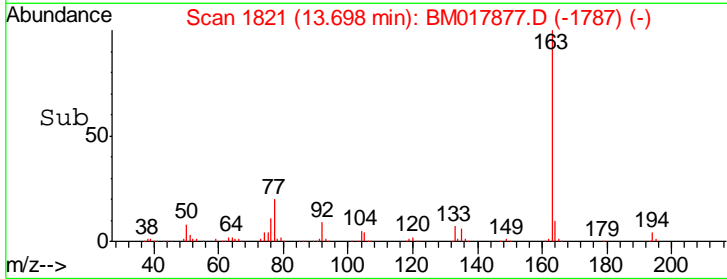
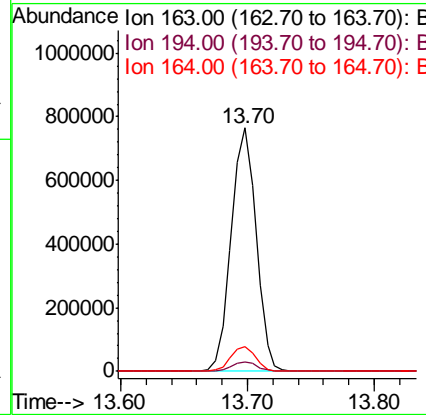
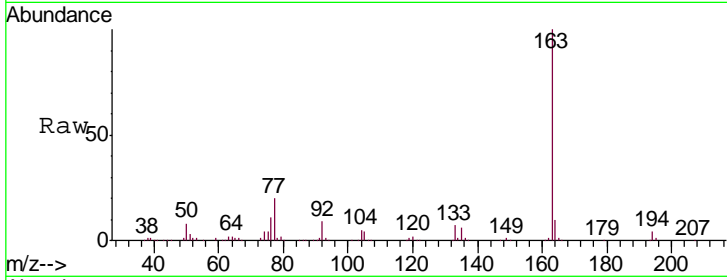


#44
 Dimethylphthalate
 Concen: 19.240 ng/ul
 RT: 13.70 min Scan# 1821
 Delta R.T. -0.00 min
 Lab File: BM017877.D
 Acq: 03 Dec 2018 11:24

Instrument :
 BNA_M
 ClientSampleID :
 SST02077

Tgt Ion:163 Resp: 1042896

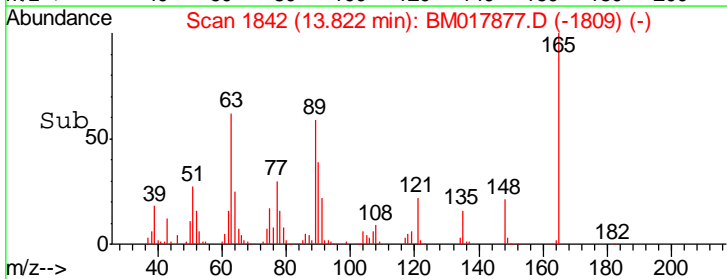
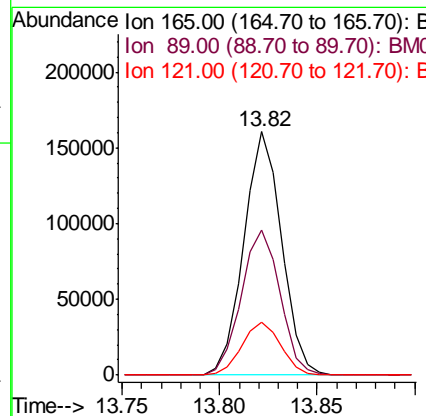
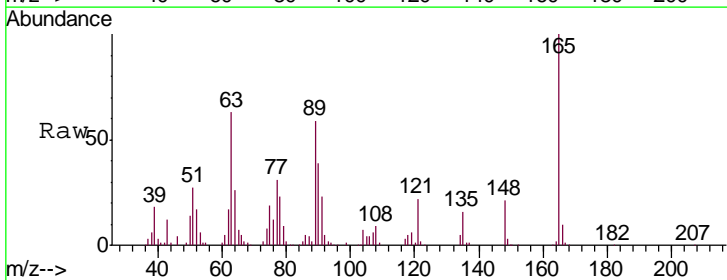
Ion	Ratio	Lower	Upper
163	100		
194	4.0	3.4	5.0
164	9.9	8.1	12.1

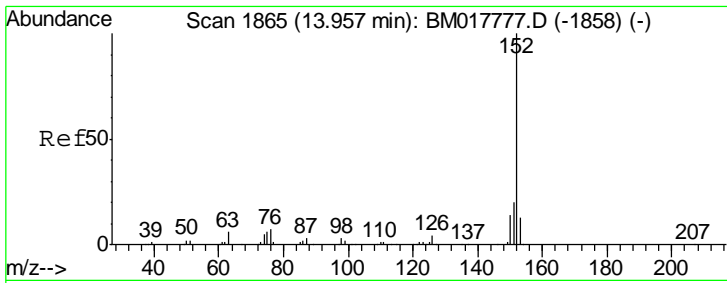


#45
 2,6-Dinitrotoluene
 Concen: 20.266 ng/ul
 RT: 13.82 min Scan# 1842
 Delta R.T. -0.01 min
 Lab File: BM017877.D
 Acq: 03 Dec 2018 11:24

Tgt Ion:165 Resp: 215857

Ion	Ratio	Lower	Upper
165	100		
89	59.3	48.0	72.0
121	21.7	17.0	25.6



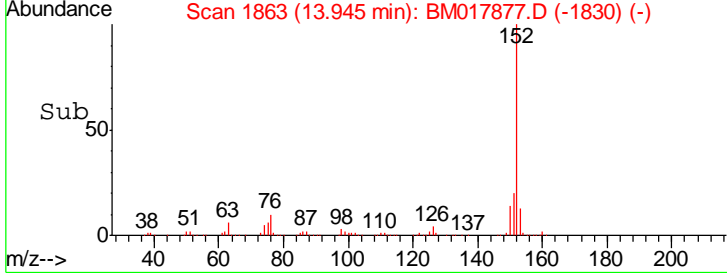
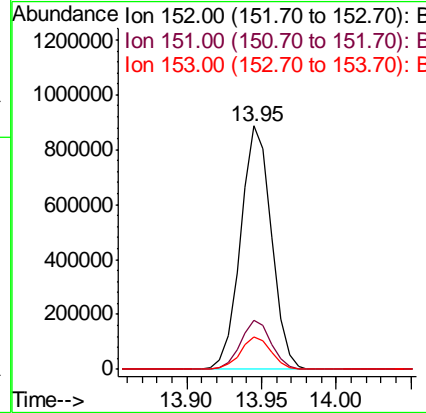
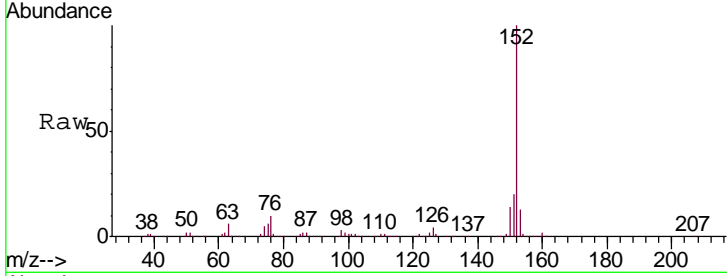


#47
 Acenaphthylene
 Concen: 20.143 ng/ul
 RT: 13.95 min Scan# 1863
 Delta R.T. -0.01 min
 Lab File: BM017877.D
 Acq: 03 Dec 2018 11:24

Instrument :
 BNA_M
 ClientSampleId :
 SSTD02077

Tgt Ion:152 Resp: 1273818

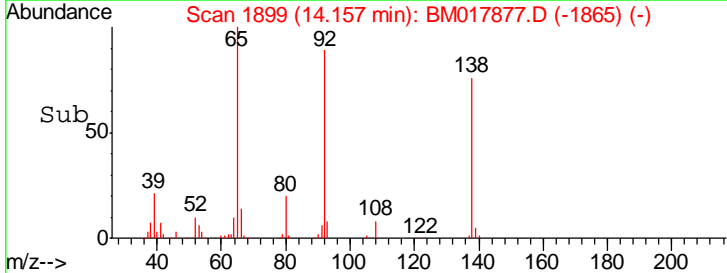
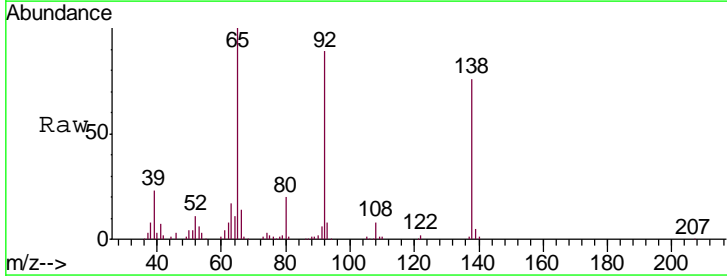
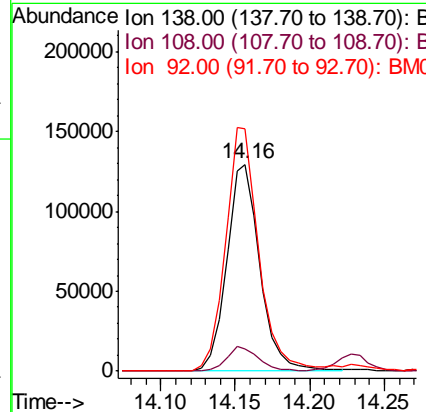
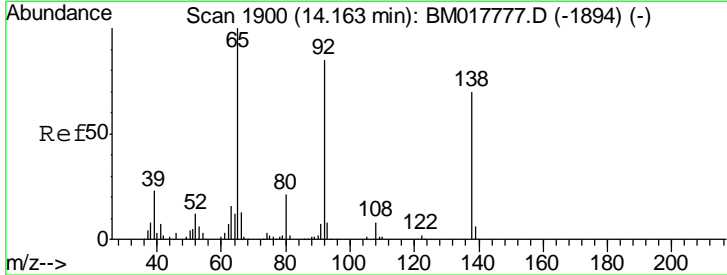
Ion	Ratio	Lower	Upper
152	100		
151	20.0	16.0	24.0
153	13.2	10.4	15.6

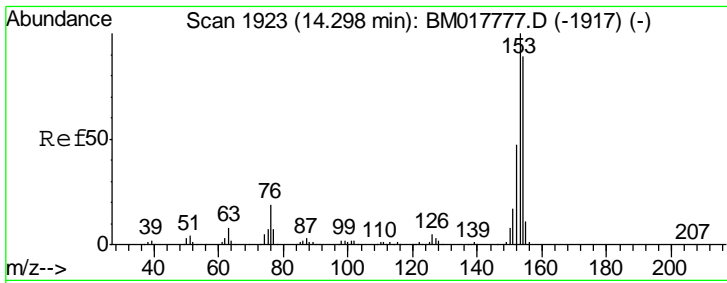


#48
 3-Nitroaniline
 Concen: 19.827 ng/ul
 RT: 14.16 min Scan# 1899
 Delta R.T. -0.00 min
 Lab File: BM017877.D
 Acq: 03 Dec 2018 11:24

Tgt Ion:138 Resp: 201464

Ion	Ratio	Lower	Upper
138	100		
108	11.0	9.0	13.4
92	117.3	98.8	148.2

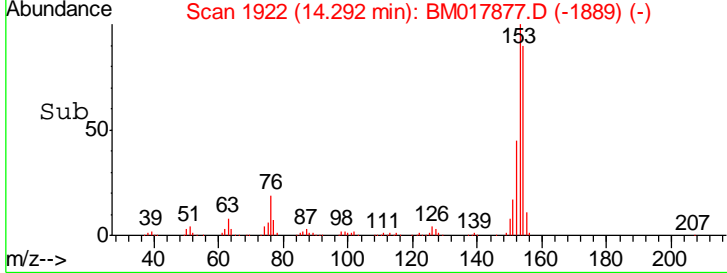
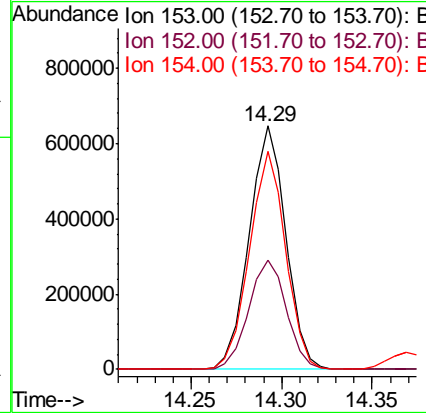
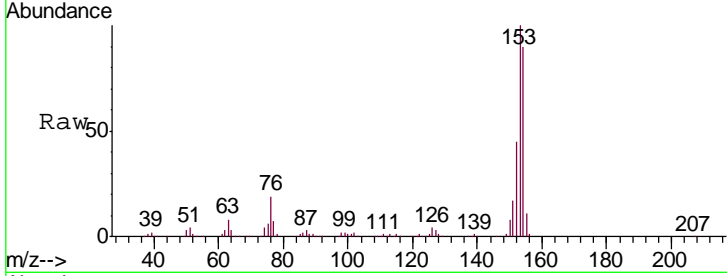




#49
 Acenaphthene
 Concen: 19.961 ng/ul
 RT: 14.29 min Scan# 1922
 Delta R.T. -0.01 min
 Lab File: BM017877.D
 Acq: 03 Dec 2018 11:24

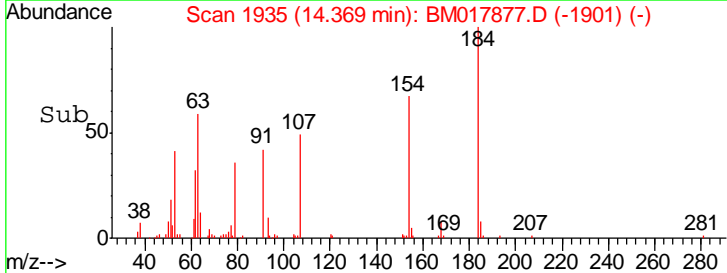
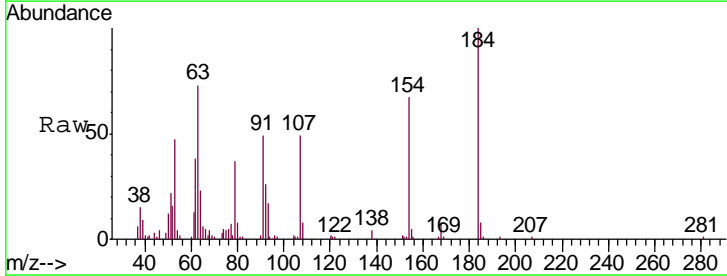
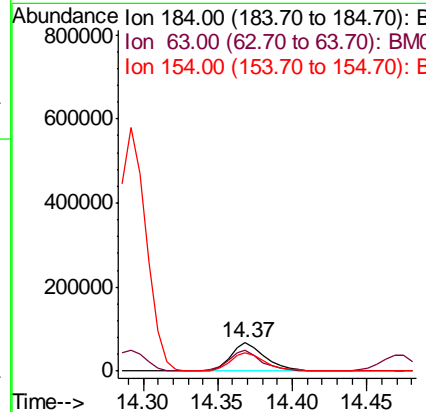
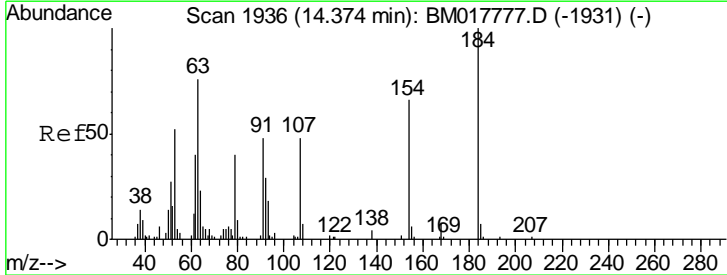
Instrument :
 BNA_M
 ClientSampled :
 SST02077

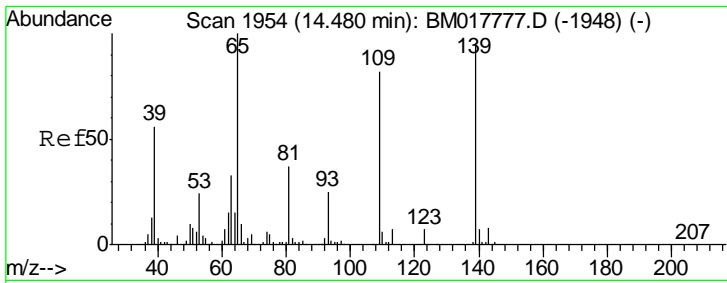
Tgt Ion	Resp	Lower	Upper
153	100		
152	45.0	37.0	55.6
154	89.5	70.6	106.0



#50
 2,4-Dinitrophenol
 Concen: 15.233 ng/ul
 RT: 14.37 min Scan# 1935
 Delta R.T. -0.00 min
 Lab File: BM017877.D
 Acq: 03 Dec 2018 11:24

Tgt Ion	Resp	Lower	Upper
184	100		
63	73.3	54.4	81.6
154	66.9	51.1	76.7

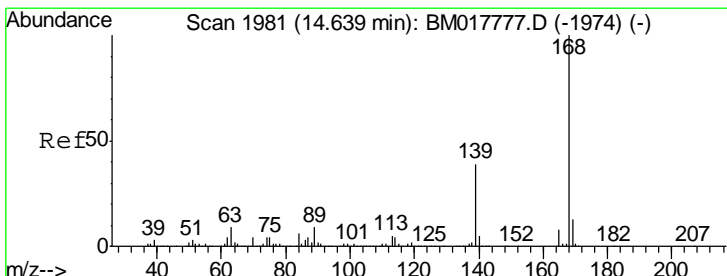
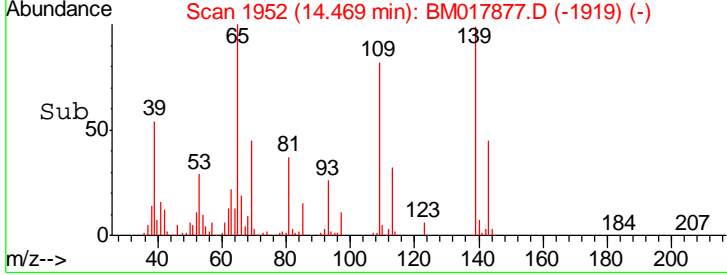
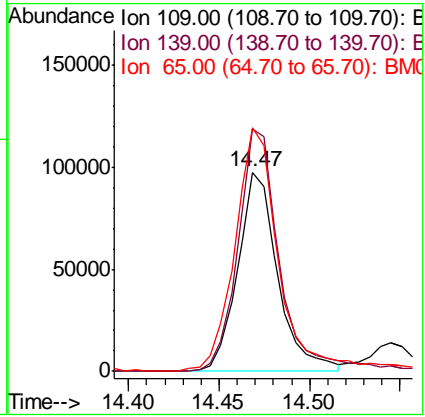
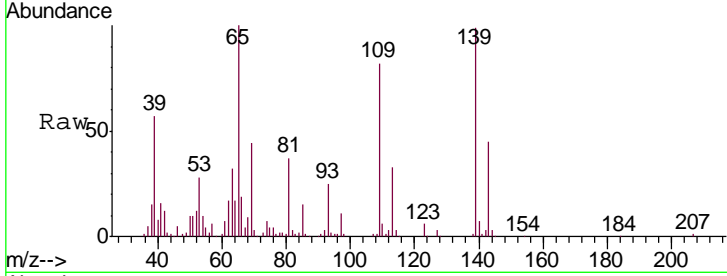




#52
 4-Nitrophenol
 Concen: 17.903 ng/ul
 RT: 14.47 min Scan# 1952
 Delta R.T. -0.01 min
 Lab File: BM017877.D
 Acq: 03 Dec 2018 11:24

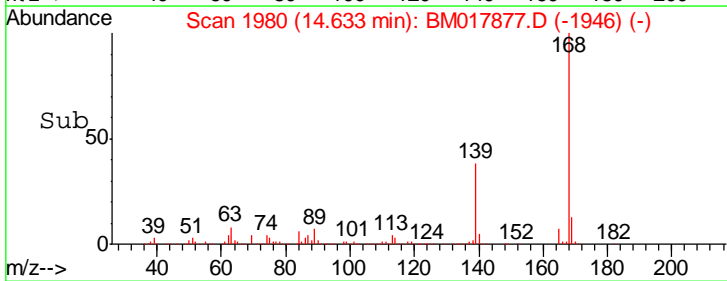
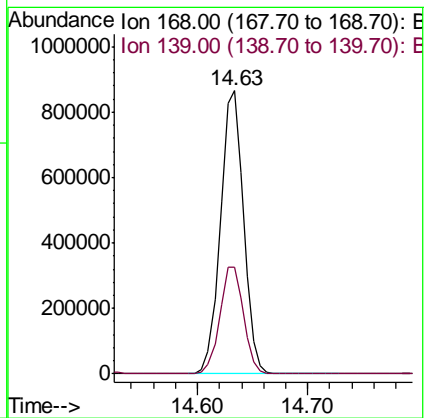
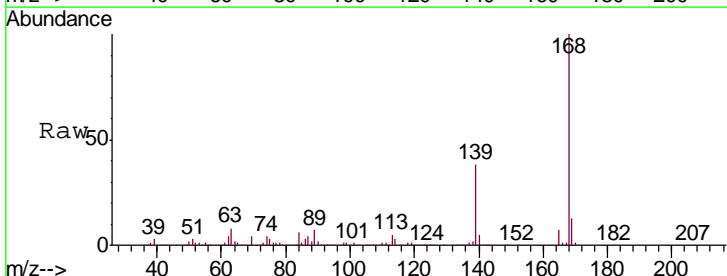
Instrument :
 BNA_M
 ClientSampled :
 SSTD02077

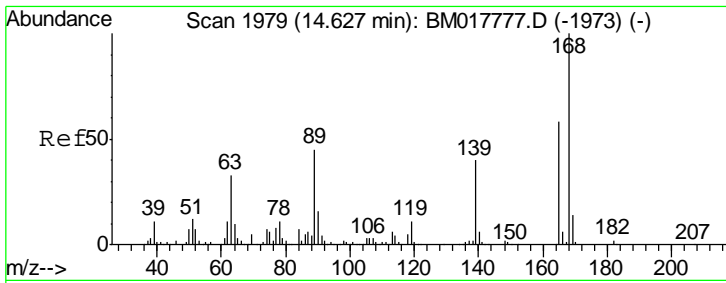
Tgt Ion	Resp	Lower	Upper
109	149793		
109	100		
139	121.3	97.4	146.0
65	122.1	104.5	156.7



#53
 Dibenzofuran
 Concen: 19.591 ng/ul
 RT: 14.63 min Scan# 1980
 Delta R.T. -0.00 min
 Lab File: BM017877.D
 Acq: 03 Dec 2018 11:24

Tgt Ion	Resp	Lower	Upper
168	1263458		
168	100		
139	37.8	30.6	46.0

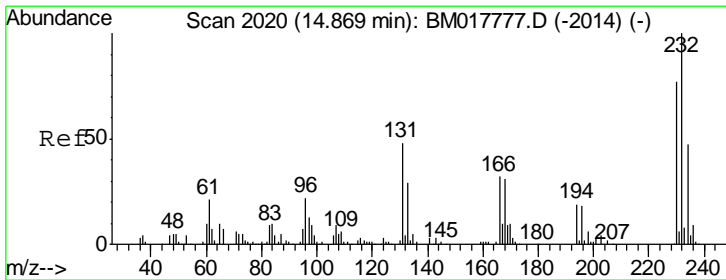
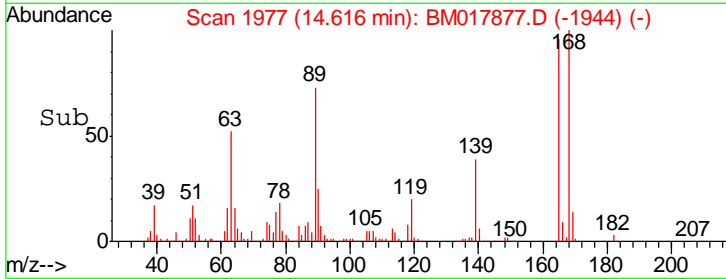
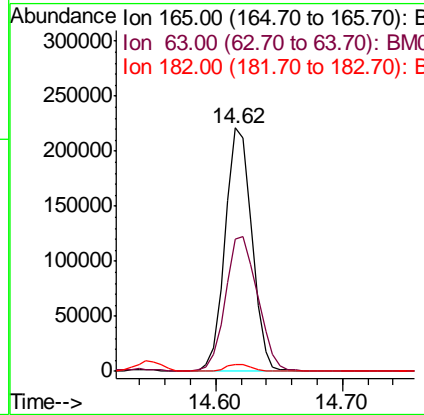
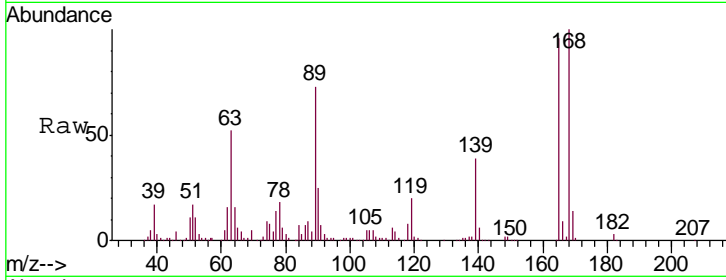




#54
 2,4-Dinitrotoluene
 Concen: 20.096 ng/ul
 RT: 14.62 min Scan# 1977
 Delta R.T. -0.01 min
 Lab File: BM017877.D
 Acq: 03 Dec 2018 11:24

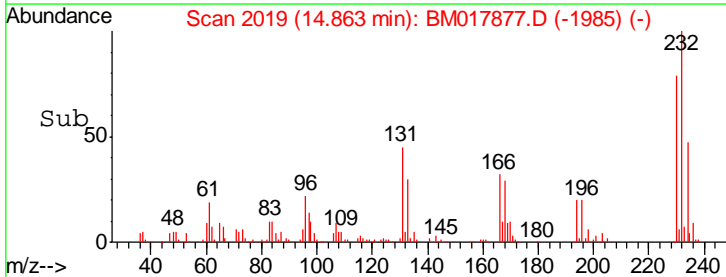
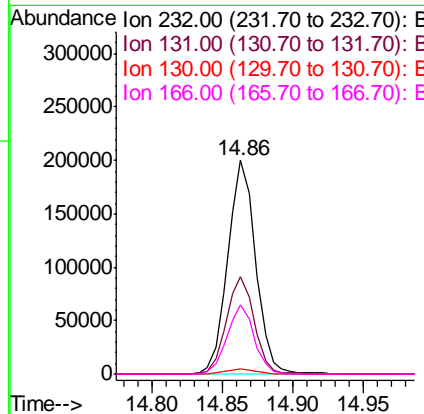
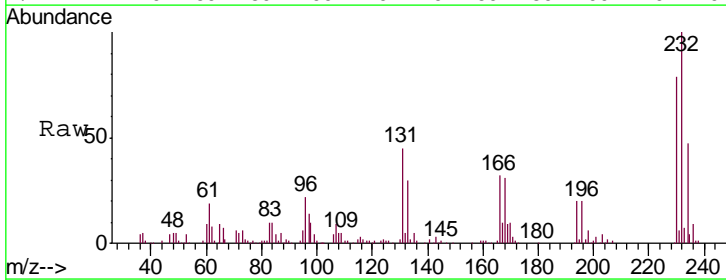
Instrument :
 BNA_M
 ClientSampled :
 SST02077

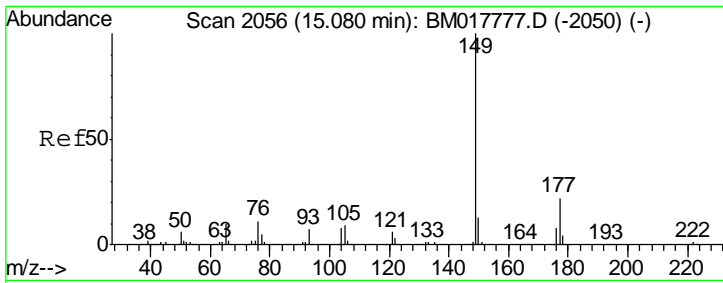
Tgt Ion	Resp	Lower	Upper
165	100		
63	54.3	41.8	62.8
182	2.8	2.2	3.2



#55
 2,3,4,6-Tetrachlorophenol
 Concen: 19.962 ng/ul
 RT: 14.86 min Scan# 2019
 Delta R.T. -0.00 min
 Lab File: BM017877.D
 Acq: 03 Dec 2018 11:24

Tgt Ion	Resp	Lower	Upper
232	100		
131	45.3	35.5	53.3
130	2.4	2.1	3.1
166	32.4	25.4	38.2

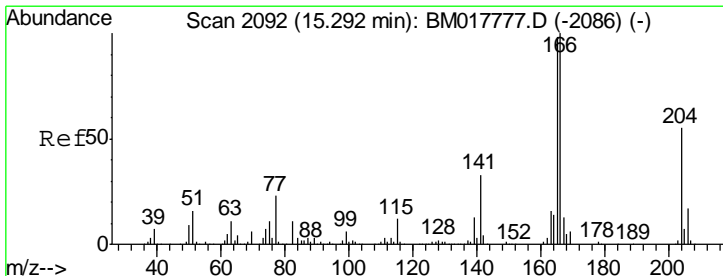
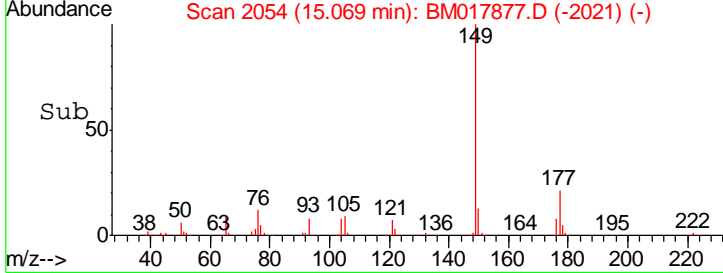
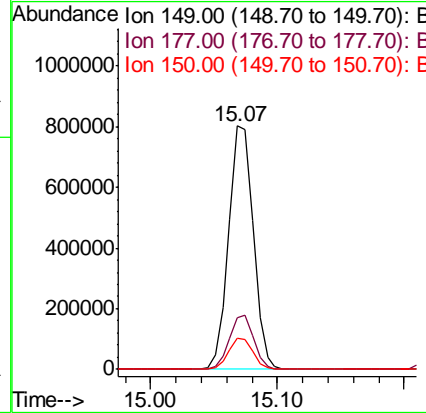
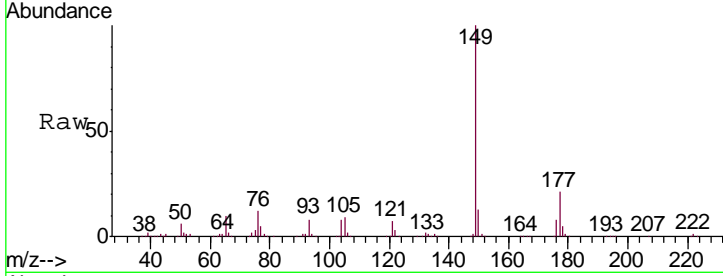




#56
 Diethylphthalate
 Concen: 19.360 ng/ul
 RT: 15.07 min Scan# 2054
 Delta R.T. -0.01 min
 Lab File: BM017877.D
 Acq: 03 Dec 2018 11:24

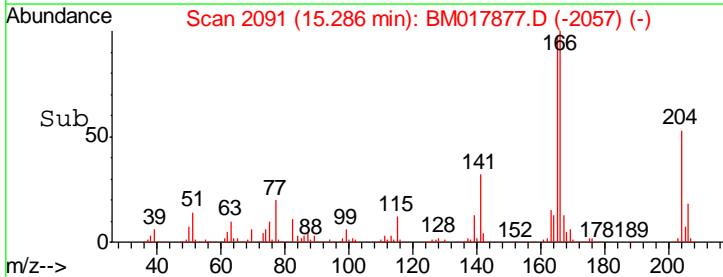
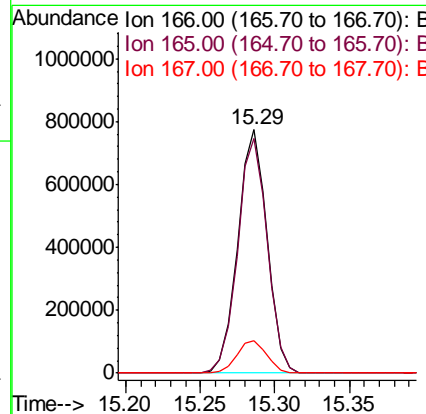
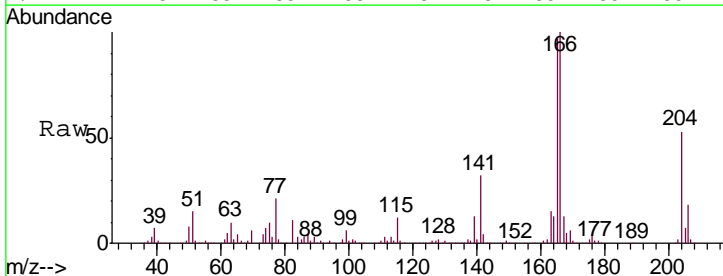
Instrument :
 BNA_M
 ClientSampled :
 SST02077

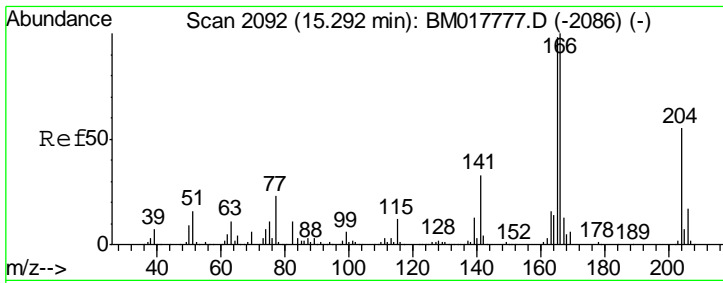
Tgt Ion	Resp	Lower	Upper
149	1081058		
177	21.1	17.0	25.6
150	13.0	10.0	15.0



#58
 Fluorene
 Concen: 19.664 ng/ul
 RT: 15.29 min Scan# 2091
 Delta R.T. -0.00 min
 Lab File: BM017877.D
 Acq: 03 Dec 2018 11:24

Tgt Ion	Resp	Lower	Upper
166	1057559		
165	96.6	78.0	117.0
167	13.3	10.8	16.2

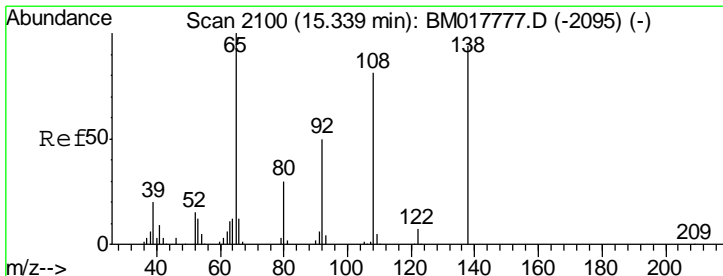
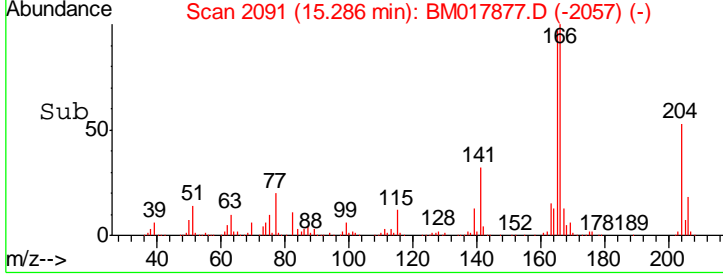
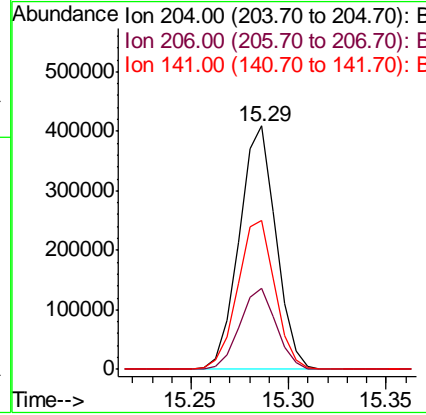
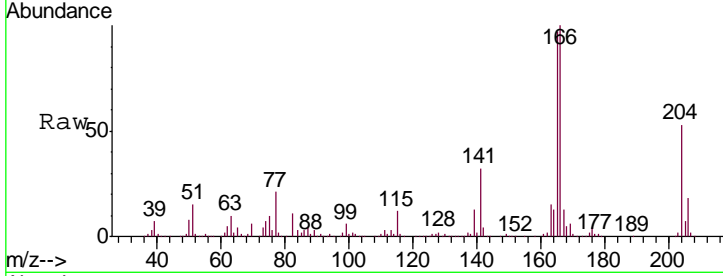




#59
 4-Chlorophenyl-phenylether
 Concen: 19.301 ng/ul
 RT: 15.29 min Scan# 2091
 Delta R.T. -0.00 min
 Lab File: BM017877.D
 Acq: 03 Dec 2018 11:24

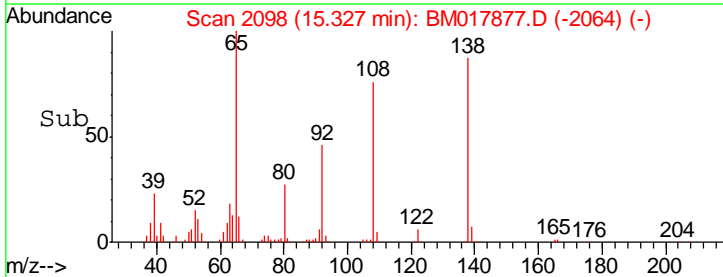
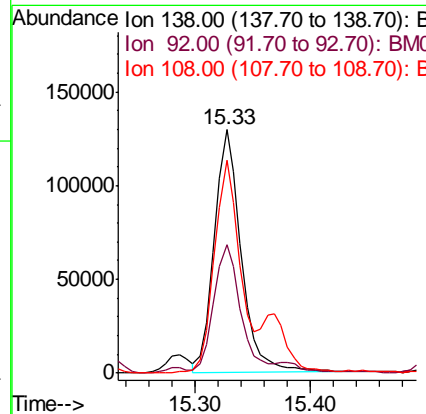
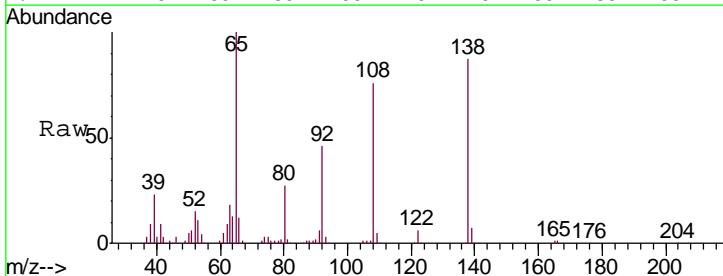
Instrument :
 BNA_M
 ClientSampleId :
 SSTD02077

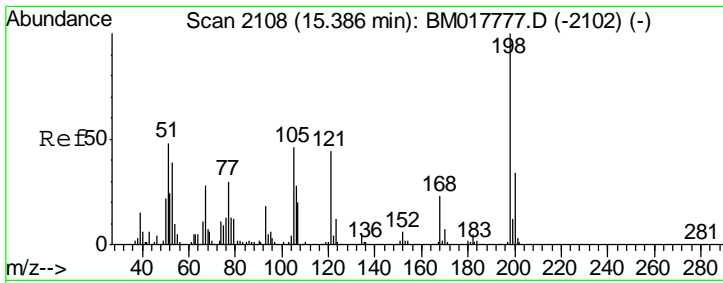
Tgt Ion	Resp	Lower	Upper
204	533205		
204	100		
206	33.3	25.6	38.4
141	61.1	49.8	74.6



#60
 4-Nitroaniline
 Concen: 18.566 ng/ul
 RT: 15.33 min Scan# 2098
 Delta R.T. -0.00 min
 Lab File: BM017877.D
 Acq: 03 Dec 2018 11:24

Tgt Ion	Resp	Lower	Upper
138	209722		
138	100		
92	52.9	42.8	64.2
108	87.4	70.2	105.4

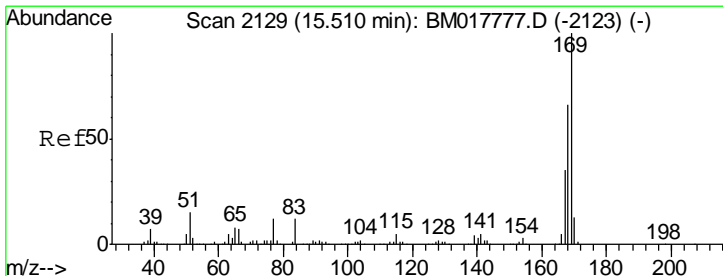
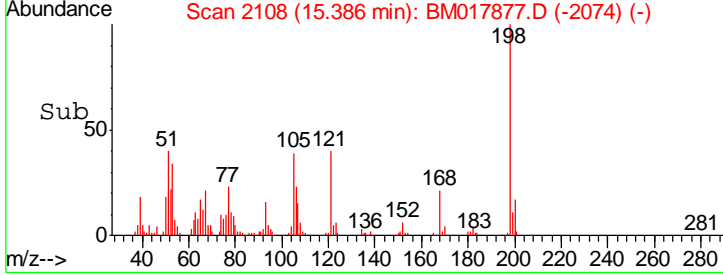
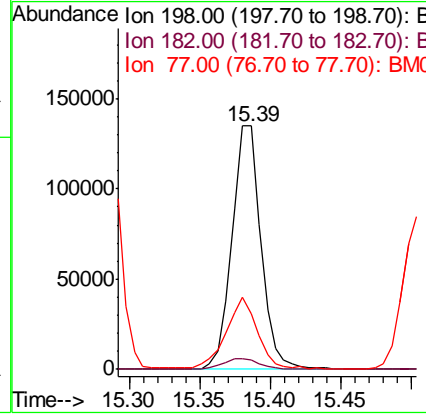
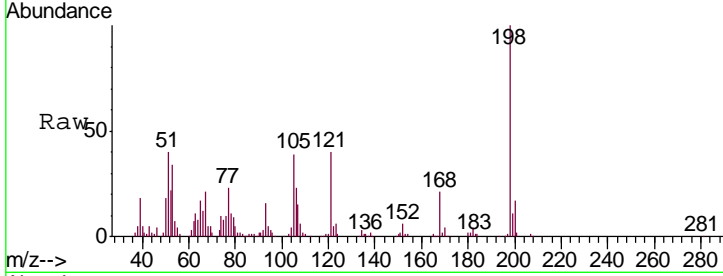




#63
 4,6-Dinitro-2-methylphenol
 Concen: 17.976 ng/ul
 RT: 15.39 min Scan# 2108
 Delta R.T. -0.00 min
 Lab File: BM017877.D
 Acq: 03 Dec 2018 11:24

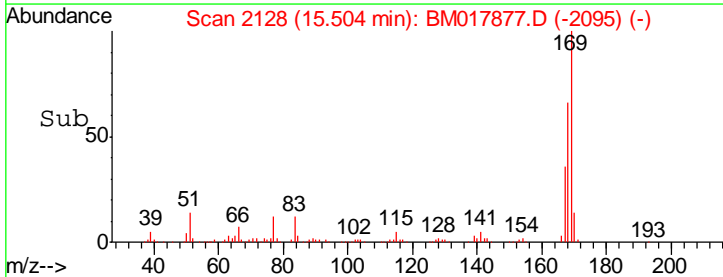
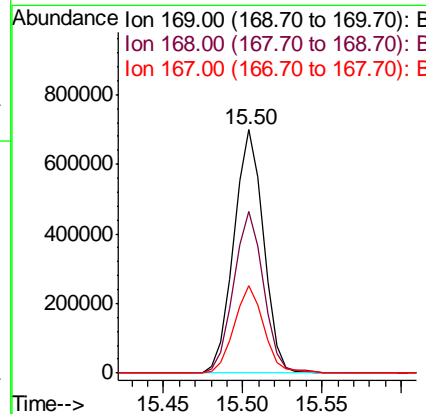
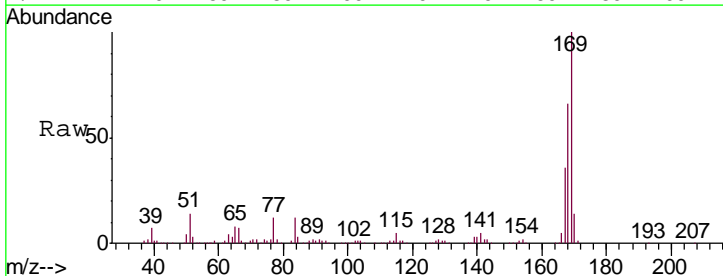
Instrument :
 BNA_M
 ClientSampled :
 SSTD02077

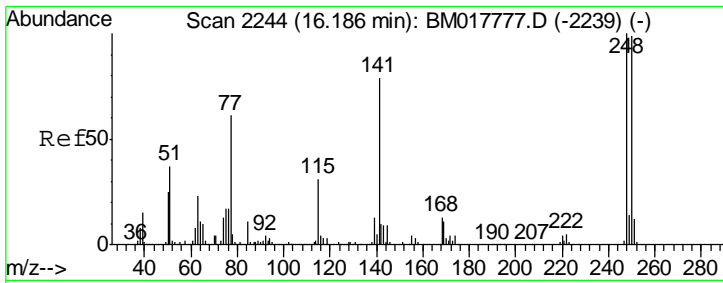
Tgt Ion	Resp	Lower	Upper
198	193748		
182	3.6	3.5	5.3
77	23.0	24.6	36.8#



#64
 N-Nitrosodiphenylamine
 Concen: 20.143 ng/ul
 RT: 15.50 min Scan# 2128
 Delta R.T. -0.01 min
 Lab File: BM017877.D
 Acq: 03 Dec 2018 11:24

Tgt Ion	Resp	Lower	Upper
169	907274		
168	66.5	51.1	76.7
167	35.9	27.8	41.8

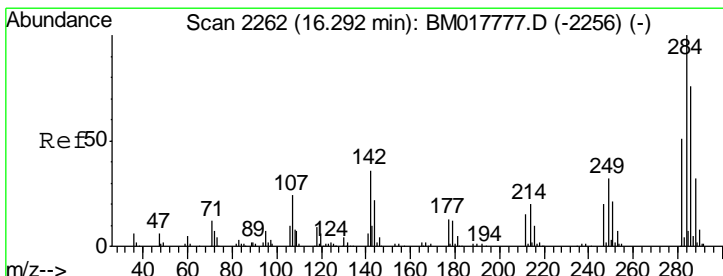
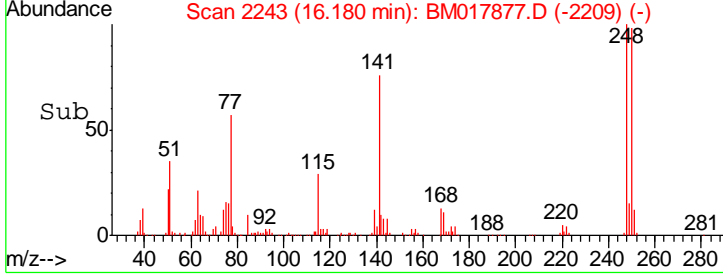
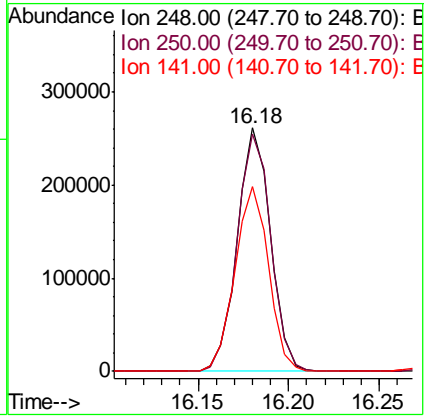
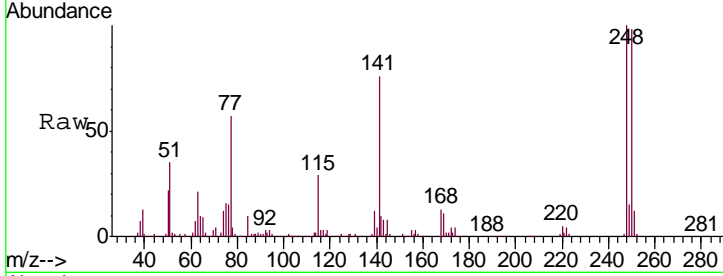




#65
 4-Bromophenyl-phenylether
 Concen: 19.924 ng/ul
 RT: 16.18 min Scan# 2243
 Delta R.T. -0.00 min
 Lab File: BM017877.D
 Acq: 03 Dec 2018 11:24

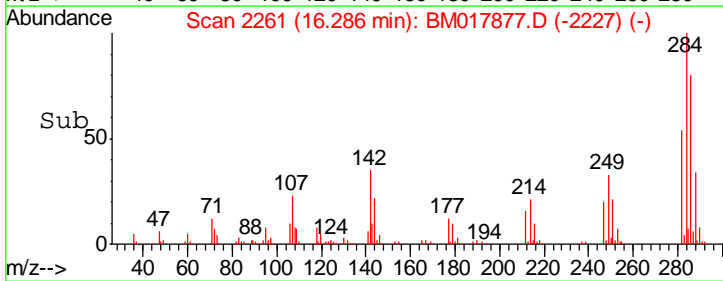
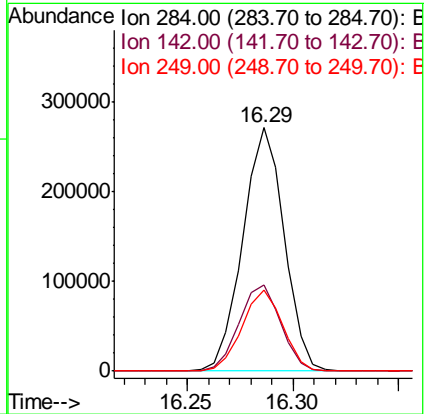
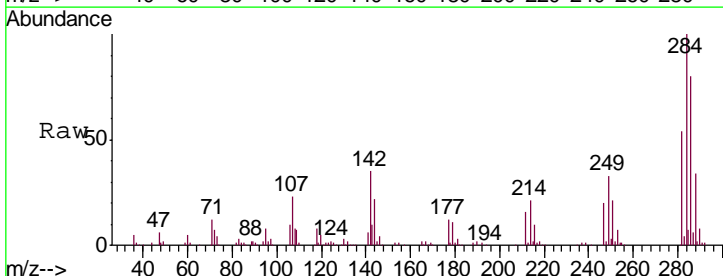
Instrument :
 BNA_M
 ClientSampled :
 SSTD02077

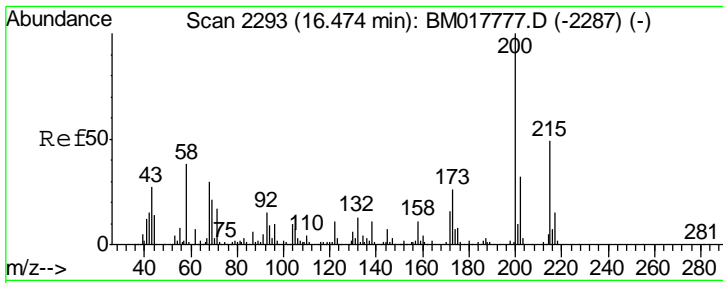
Tgt Ion	Resp	Lower	Upper
248	333060		
248	100		
250	97.7	80.8	121.2
141	75.6	56.9	85.3



#66
 Hexachlorobenzene
 Concen: 19.858 ng/ul
 RT: 16.29 min Scan# 2261
 Delta R.T. -0.00 min
 Lab File: BM017877.D
 Acq: 03 Dec 2018 11:24

Tgt Ion	Resp	Lower	Upper
284	368989		
284	100		
142	35.3	26.2	39.4
249	33.0	24.0	36.0

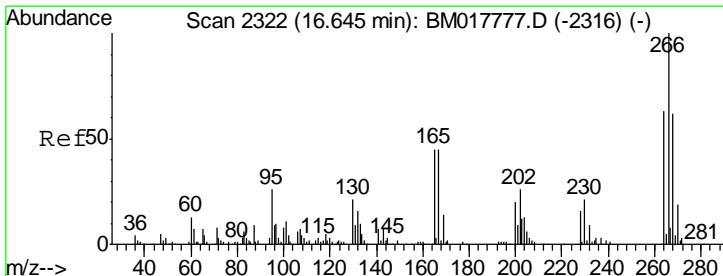
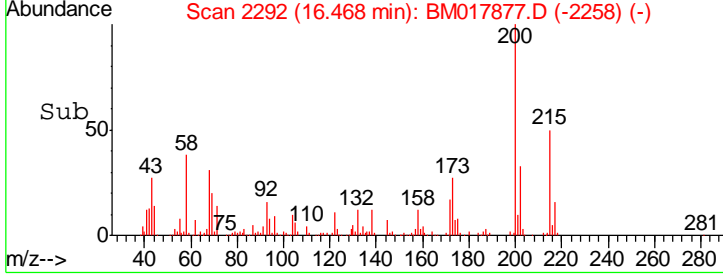
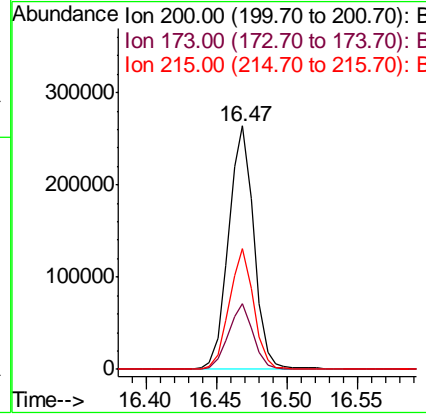
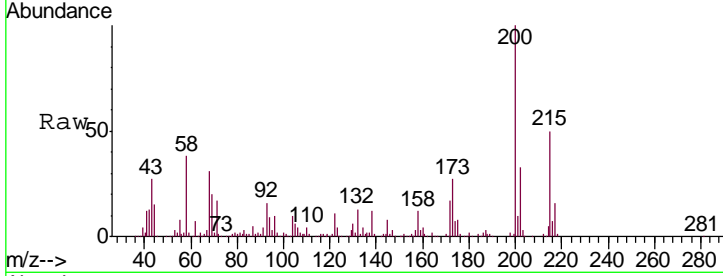




#67
 Atrazine
 Concen: 19.715 ng/ul
 RT: 16.47 min Scan# 2292
 Delta R.T. -0.00 min
 Lab File: BM017877.D
 Acq: 03 Dec 2018 11:24

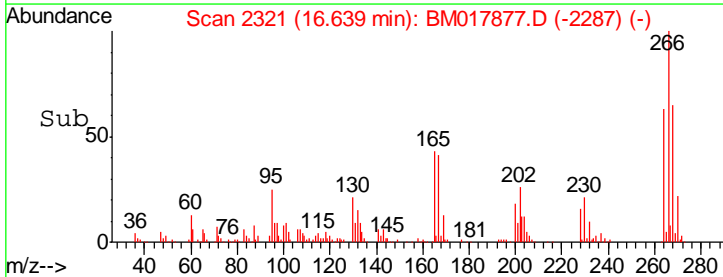
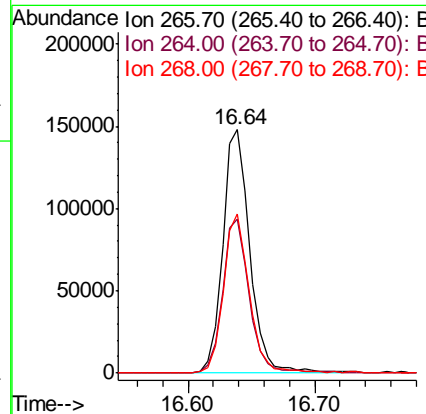
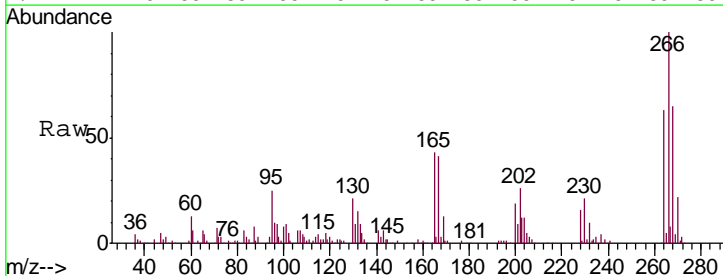
Instrument :
 BNA_M
 ClientSampled :
 SST02077

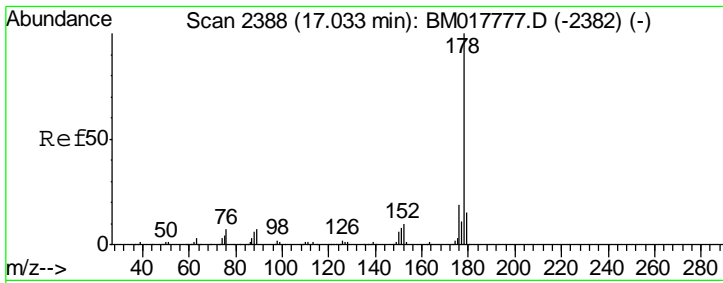
Tgt Ion	Resp	Lower	Upper
200	329376		
173	27.2	21.0	31.6
215	49.6	38.2	57.2



#68
 Pentachlorophenol
 Concen: 18.998 ng/ul
 RT: 16.64 min Scan# 2321
 Delta R.T. -0.00 min
 Lab File: BM017877.D
 Acq: 03 Dec 2018 11:24

Tgt Ion	Resp	Lower	Upper
266	219619		
264	63.5	50.2	75.2
268	65.2	49.8	74.8



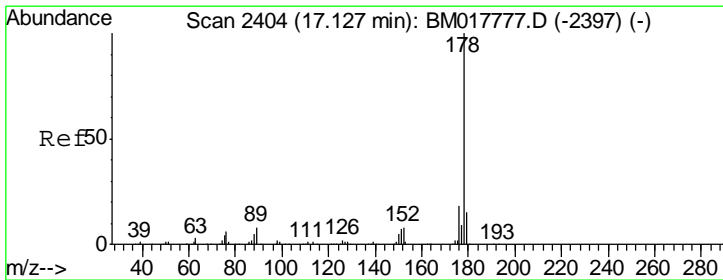
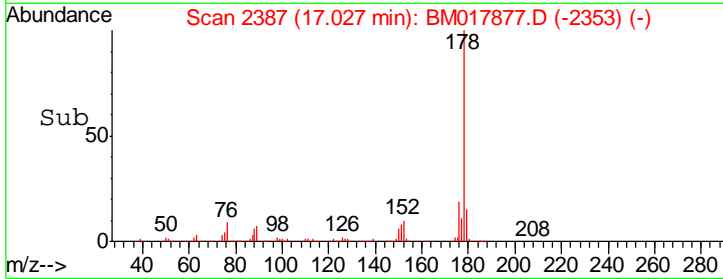
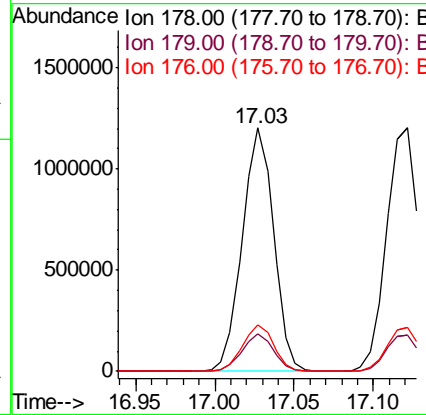
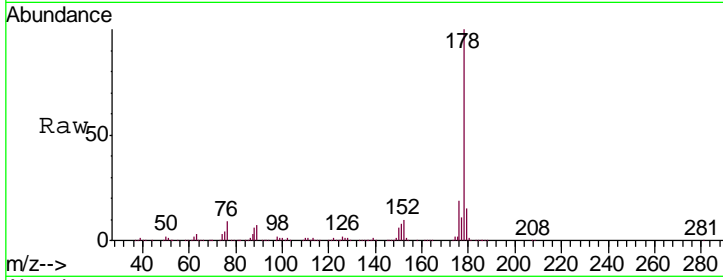


#69
 Phenanthrene
 Concen: 19.746 ng/ul
 RT: 17.03 min Scan# 2387
 Delta R.T. -0.00 min
 Lab File: BM017877.D
 Acq: 03 Dec 2018 11:24

Instrument :
 BNA_M
 ClientSampled :
 SSTD02077

Tgt Ion:178 Resp: 1651959

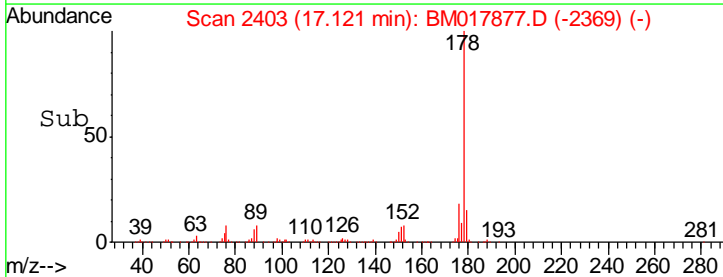
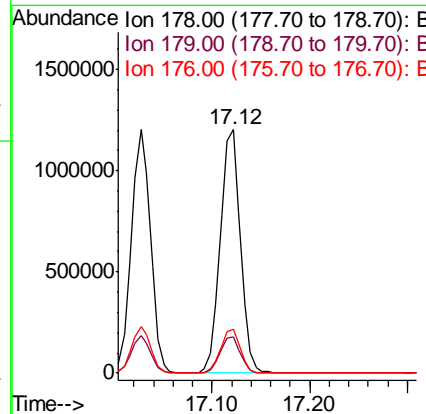
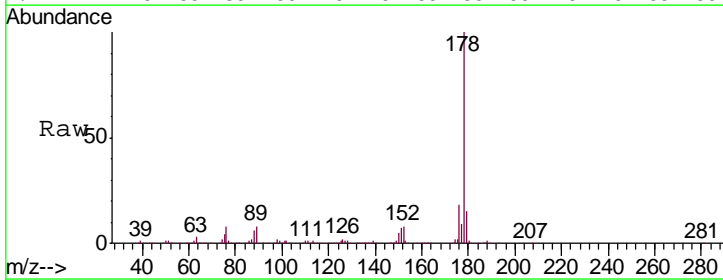
Ion	Ratio	Lower	Upper
178	100		
179	15.4	11.8	17.8
176	18.9	15.0	22.6

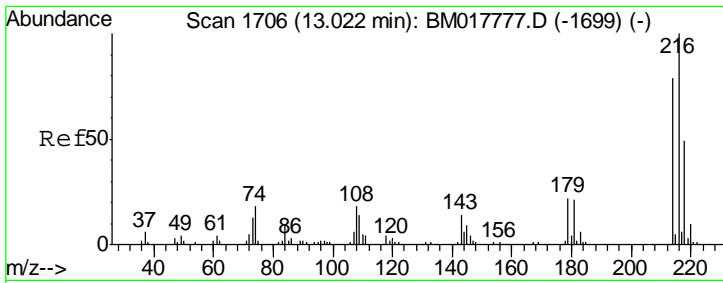


#71
 Anthracene
 Concen: 20.128 ng/ul
 RT: 17.12 min Scan# 2403
 Delta R.T. -0.00 min
 Lab File: BM017877.D
 Acq: 03 Dec 2018 11:24

Tgt Ion:178 Resp: 1722049

Ion	Ratio	Lower	Upper
178	100		
179	14.8	12.4	18.6
176	17.9	14.8	22.2

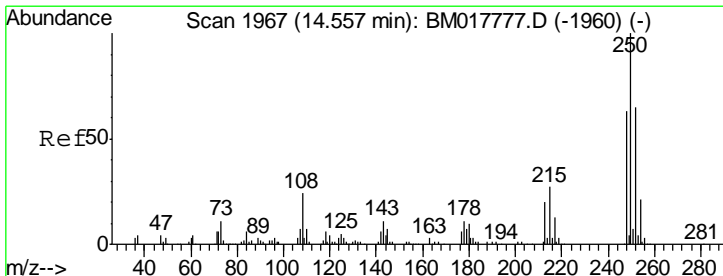
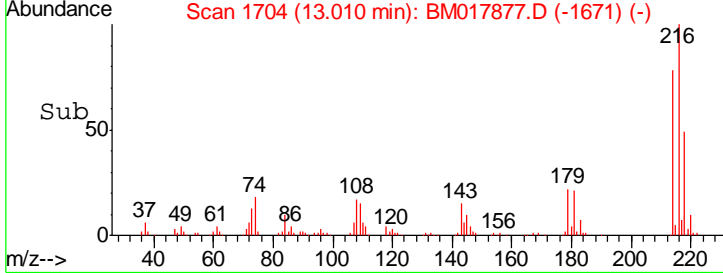
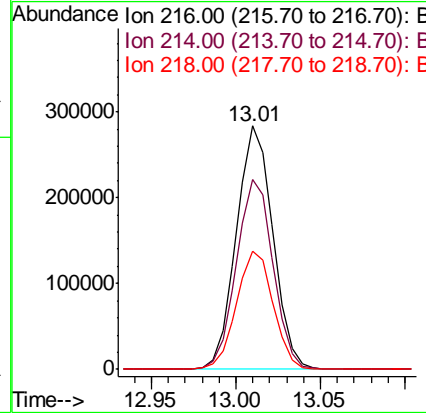
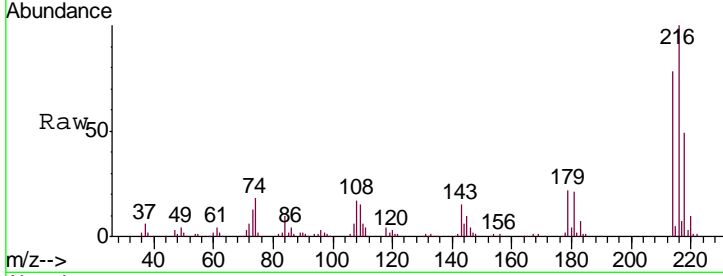




#72
 1,2,3,4-Tetrachlorobenzene
 Concen: 20.609 ng/uL
 RT: 13.01 min Scan# 1704
 Delta R.T. -0.01 min
 Lab File: BM017877.D
 Acq: 03 Dec 2018 11:24

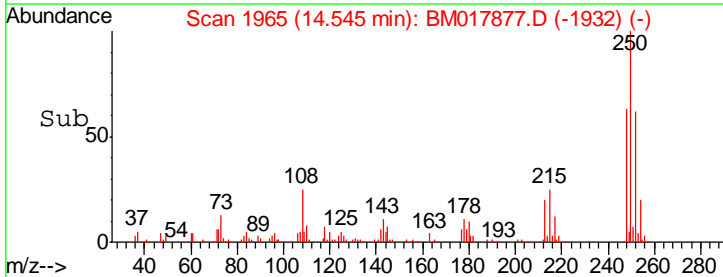
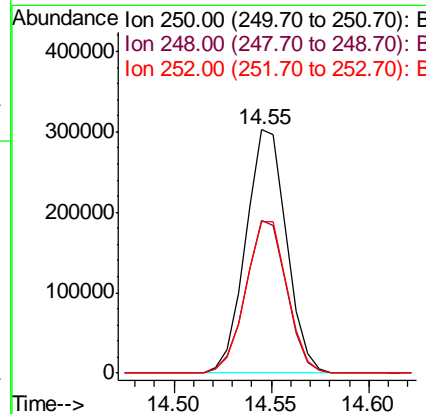
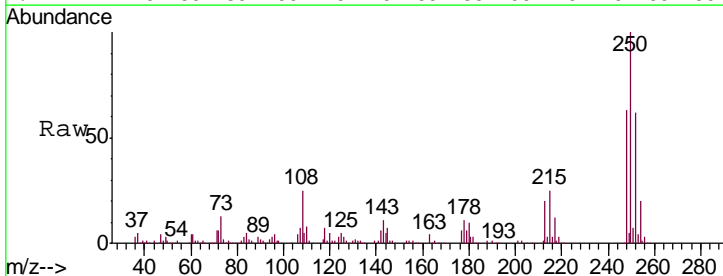
Instrument :
 BNA_M
 ClientSampled :
 SST02077

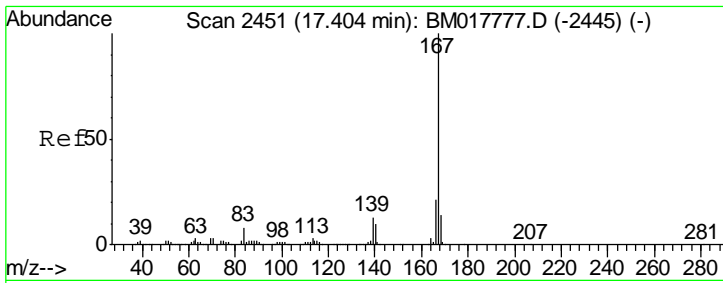
Tgt Ion	Resp	Lower	Upper
216	100		
214	77.9	62.2	93.4
218	48.6	37.9	56.9



#73
 Pentachlorobenzene
 Concen: 20.644 ng/uL
 RT: 14.55 min Scan# 1965
 Delta R.T. -0.01 min
 Lab File: BM017877.D
 Acq: 03 Dec 2018 11:24

Tgt Ion	Resp	Lower	Upper
250	100		
248	62.5	50.5	75.7
252	62.4	50.6	76.0



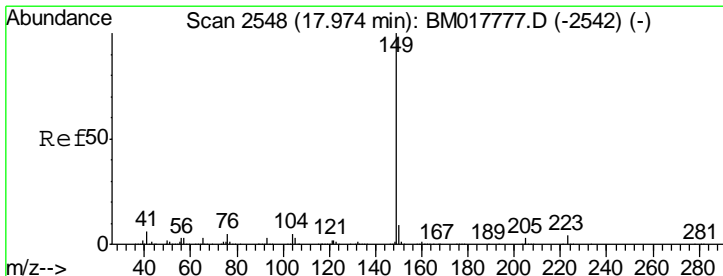
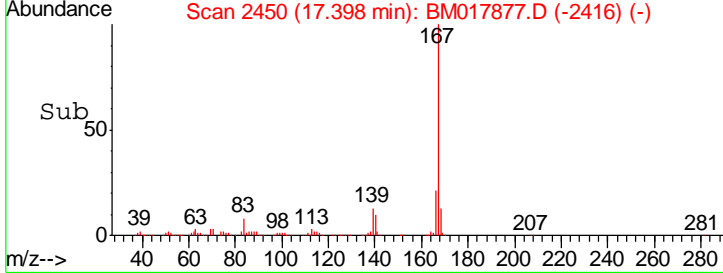
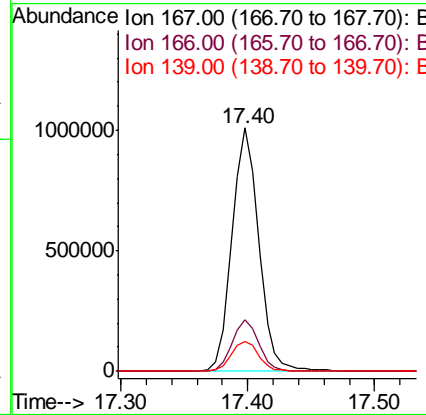
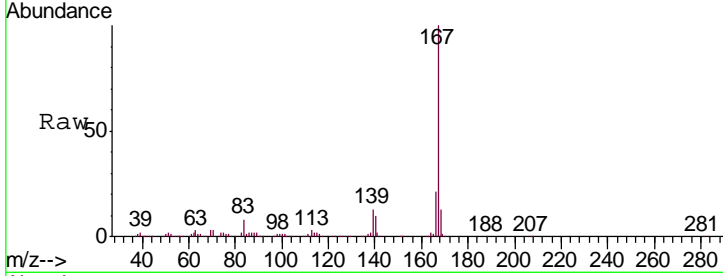


#74
 Carbazole
 Concen: 19.508 ng/ul
 RT: 17.40 min Scan# 2450
 Delta R.T. -0.00 min
 Lab File: BM017877.D
 Acq: 03 Dec 2018 11:24

Instrument :
 BNA_M
 ClientSampled :
 SST02077

Tgt Ion:167 Resp: 1470649

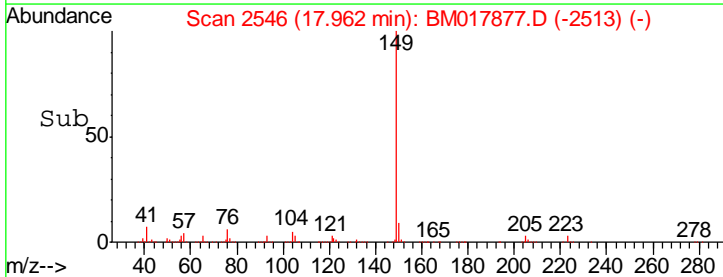
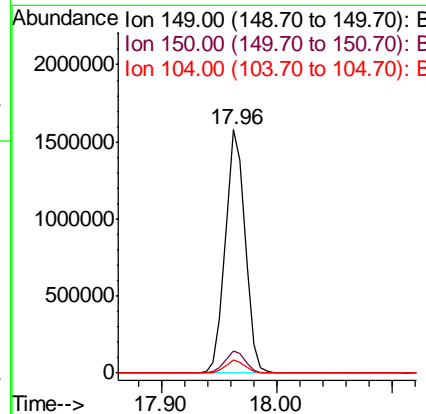
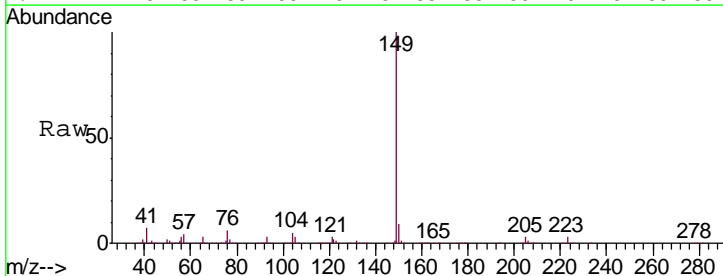
Ion	Ratio	Lower	Upper
167	100		
166	21.2	17.0	25.4
139	12.5	10.5	15.7

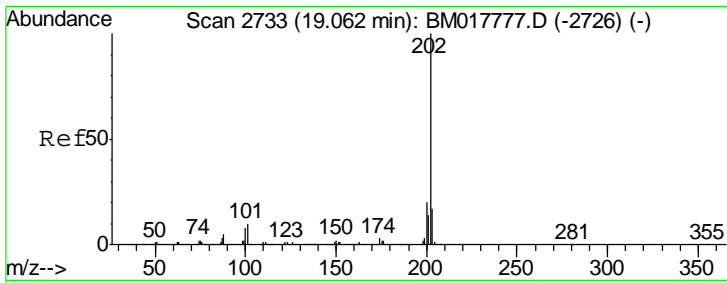


#75
 Di-n-butylphthalate
 Concen: 19.778 ng/ul
 RT: 17.96 min Scan# 2546
 Delta R.T. -0.01 min
 Lab File: BM017877.D
 Acq: 03 Dec 2018 11:24

Tgt Ion:149 Resp: 1884287

Ion	Ratio	Lower	Upper
149	100		
150	9.1	7.0	10.6
104	5.5	4.2	6.4

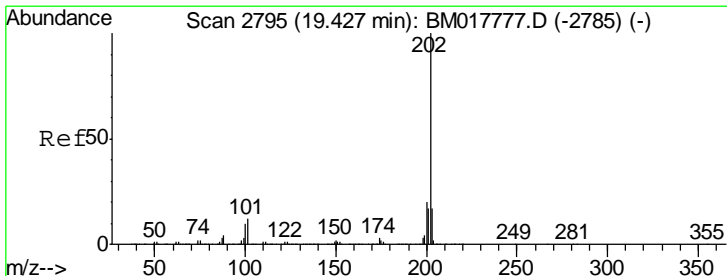
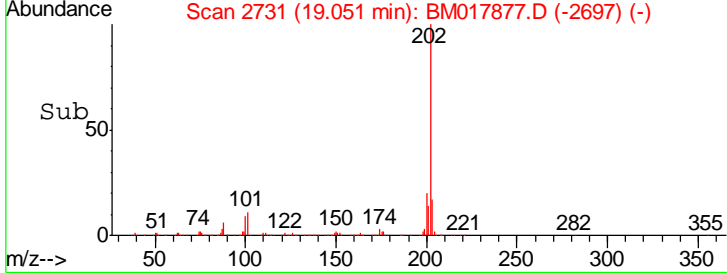
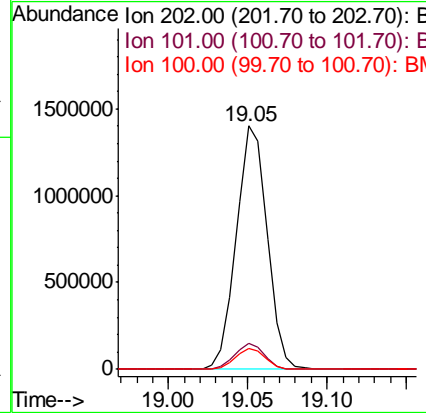
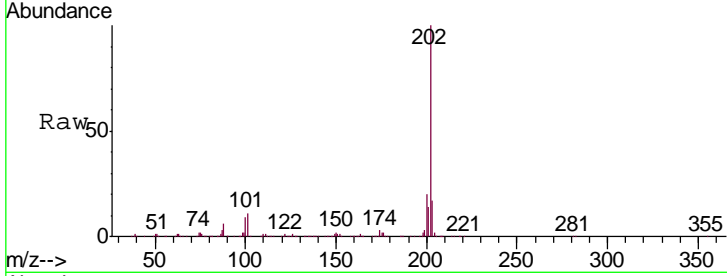




#76
 Fluoranthene
 Concen: 19.235 ng/ul
 RT: 19.05 min Scan# 2731
 Delta R.T. -0.00 min
 Lab File: BM017877.D
 Acq: 03 Dec 2018 11:24

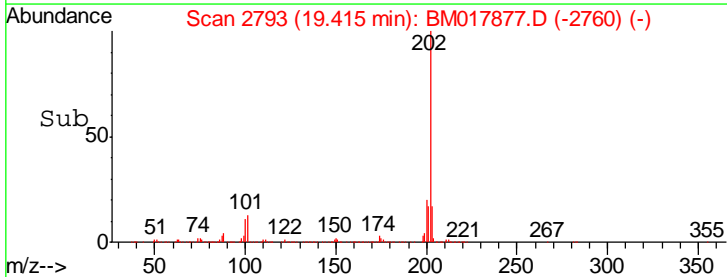
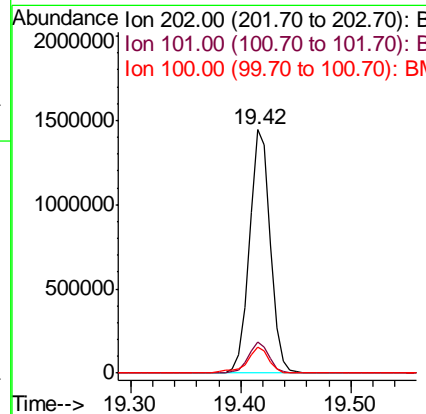
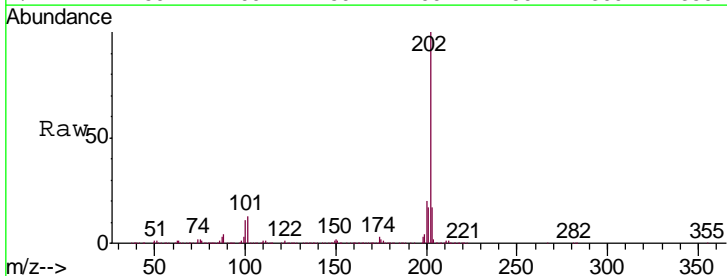
Instrument :
 BNA_M
 ClientSampled :
 SSTD02077

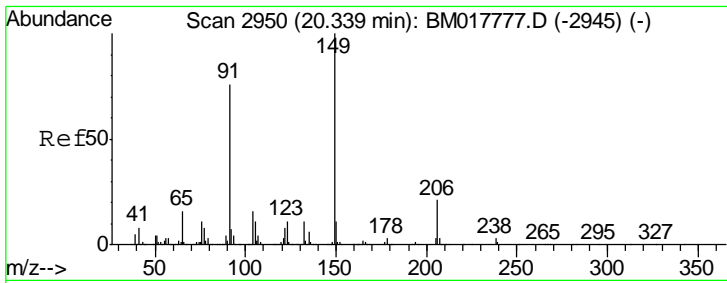
Tgt Ion	Resp	Lower	Upper
202	1892775		
101	10.6	8.4	12.6
100	8.5	6.6	9.8



#79
 Pyrene
 Concen: 23.523 ng/ul
 RT: 19.42 min Scan# 2793
 Delta R.T. -0.01 min
 Lab File: BM017877.D
 Acq: 03 Dec 2018 11:24

Tgt Ion	Resp	Lower	Upper
202	1912570		
101	13.0	9.6	14.4
100	10.7	7.9	11.9

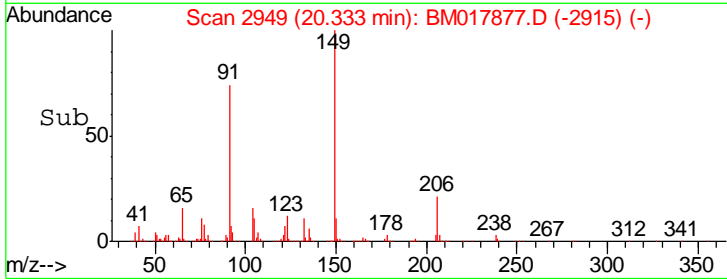
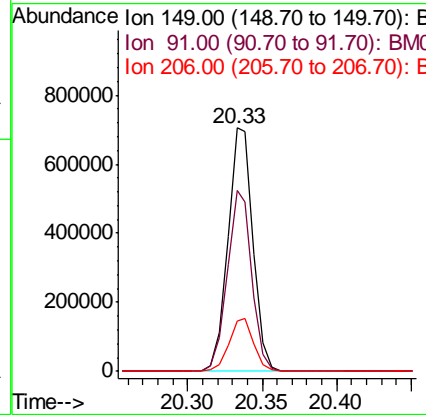
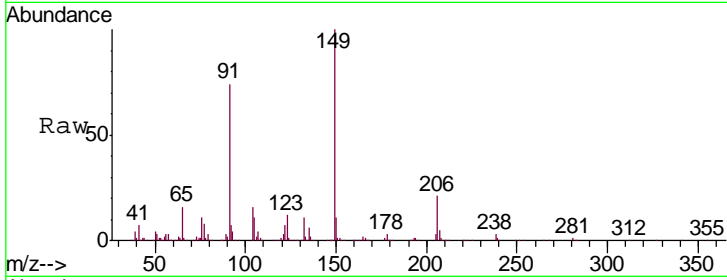




#80
 Butylbenzylphthalate
 Concen: 23.890 ng/ul
 RT: 20.33 min Scan# 2949
 Delta R.T. -0.00 min
 Lab File: BM017877.D
 Acq: 03 Dec 2018 11:24

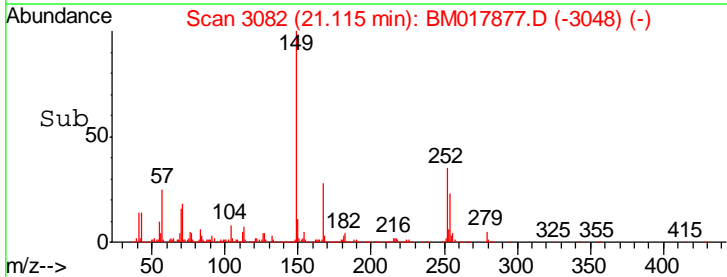
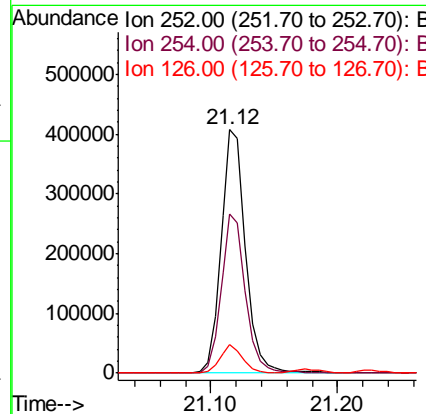
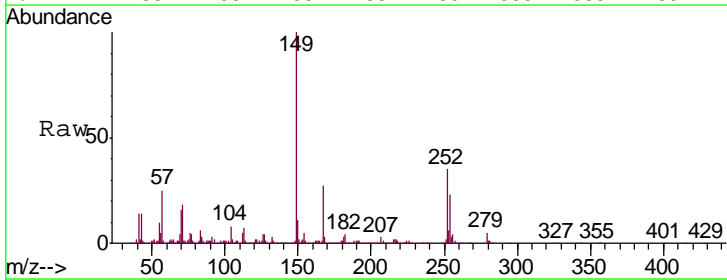
Instrument :
 BNA_M
 ClientSampled :
 SSTD02077

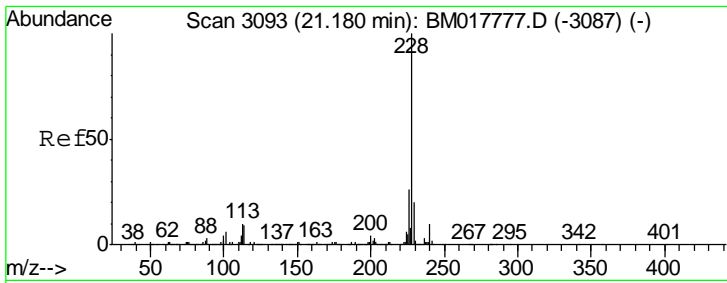
Tgt Ion	Resp	Lower	Upper
149	100		
91	74.5	58.0	87.0
206	20.6	16.6	24.8



#81
 3,3'-Dichlorobenzidine
 Concen: 19.840 ng/ul
 RT: 21.12 min Scan# 3082
 Delta R.T. -0.00 min
 Lab File: BM017877.D
 Acq: 03 Dec 2018 11:24

Tgt Ion	Resp	Lower	Upper
252	100		
254	65.3	51.2	76.8
126	11.7	9.1	13.7

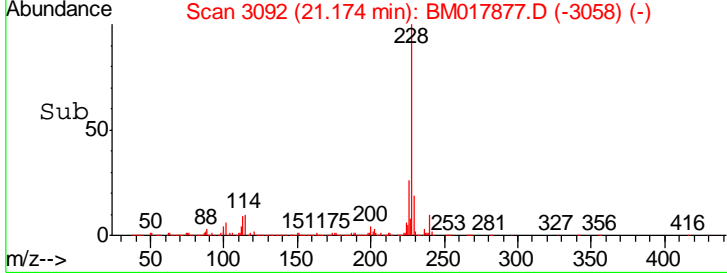
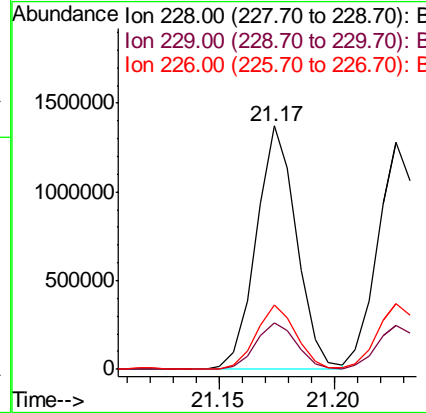
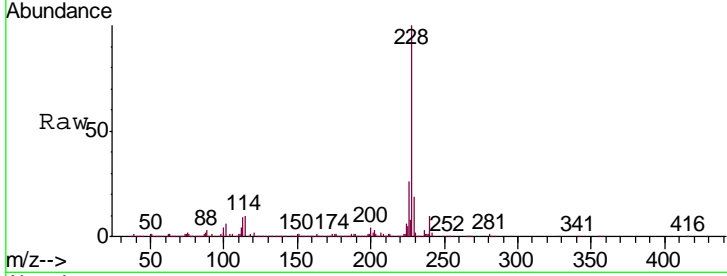




#82
 Benzo(a)anthracene
 Concen: 20.079 ng/ul
 RT: 21.17 min Scan# 3092
 Delta R.T. -0.00 min
 Lab File: BM017877.D
 Acq: 03 Dec 2018 11:24

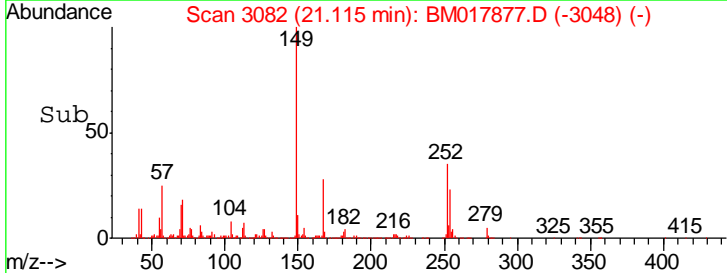
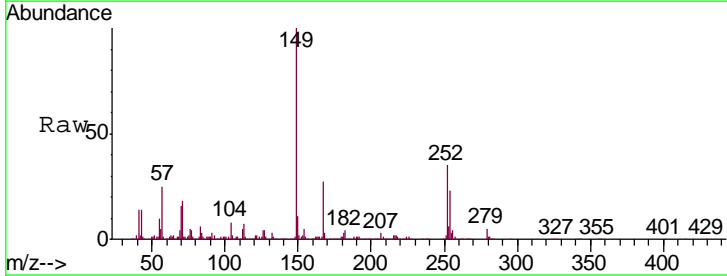
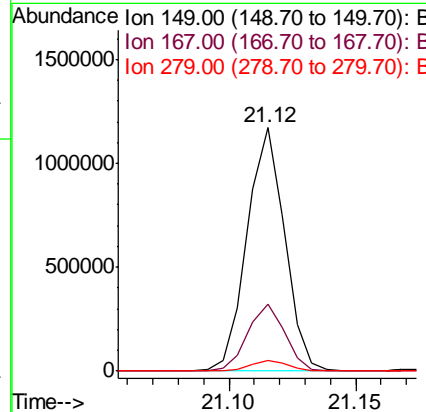
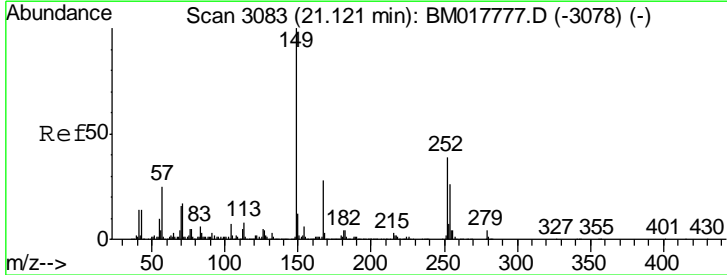
Instrument :
 BNA_M
 ClientSampled :
 SSTD02077

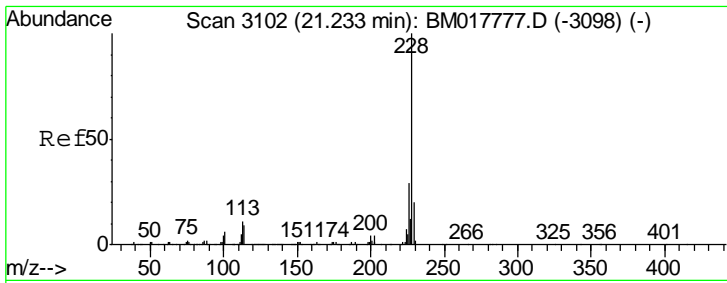
Tgt Ion	Resp	Lower	Upper
228	1668045		
229	19.3	16.0	24.0
226	26.3	21.0	31.6



#83
 Bis(2-ethylhexyl)phthalate
 Concen: 23.457 ng/ul
 RT: 21.12 min Scan# 3082
 Delta R.T. -0.00 min
 Lab File: BM017877.D
 Acq: 03 Dec 2018 11:24

Tgt Ion	Resp	Lower	Upper
149	1207633		
167	27.5	21.9	32.9
279	4.6	3.6	5.4

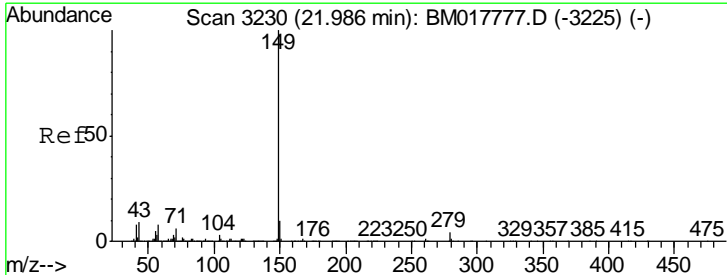
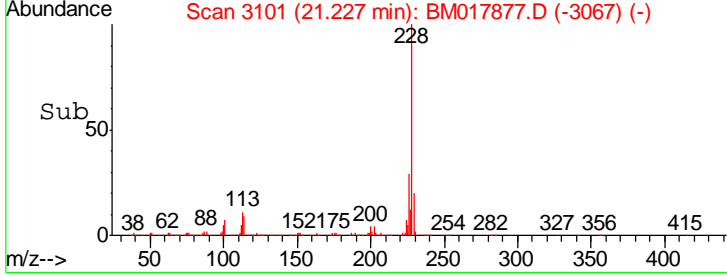
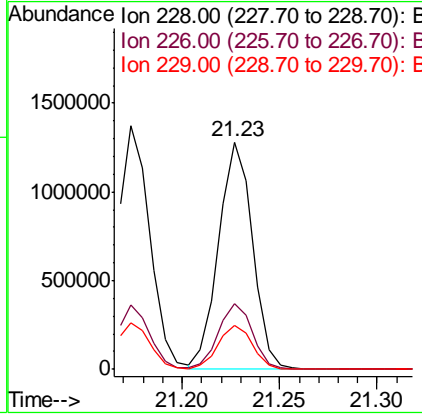
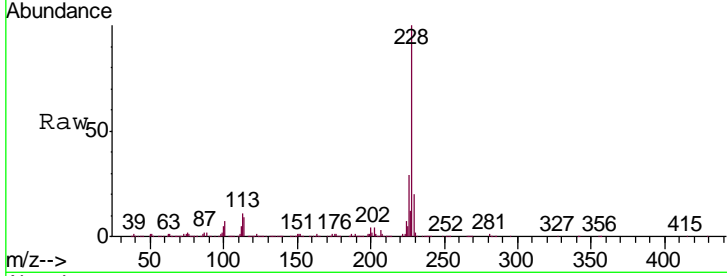




#84
 Chrysene
 Concen: 19.842 ng/ul
 RT: 21.23 min Scan# 3101
 Delta R.T. -0.00 min
 Lab File: BM017877.D
 Acq: 03 Dec 2018 11:24

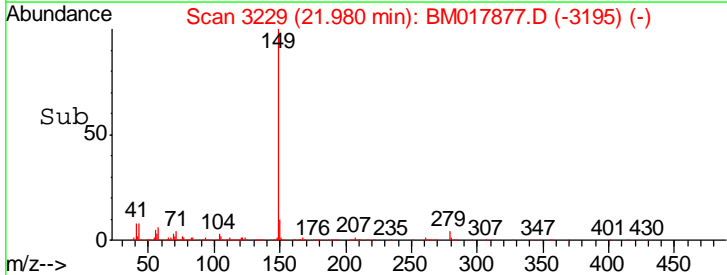
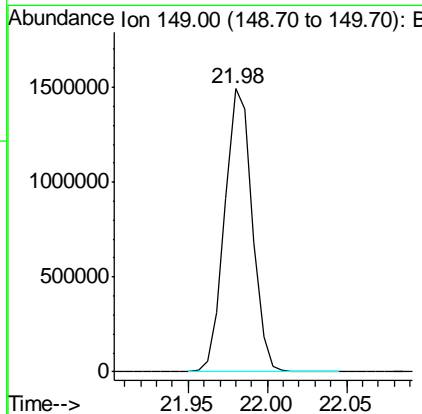
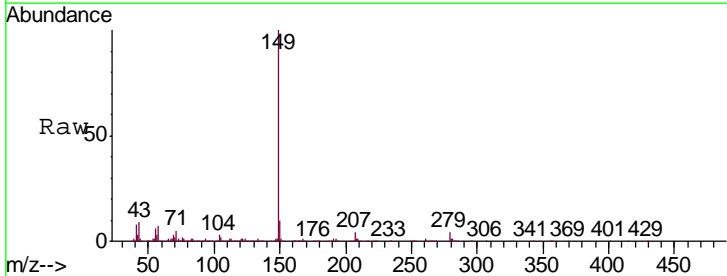
Instrument :
 BNA_M
 ClientSampleId :
 SST02077

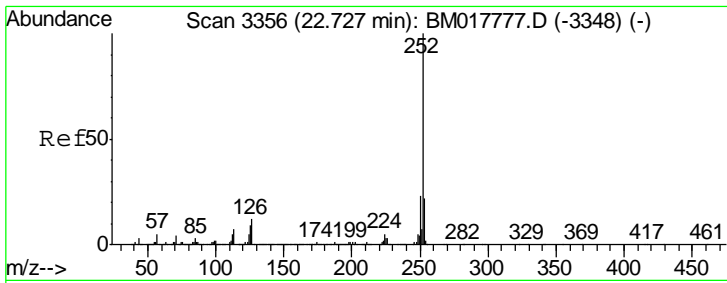
Tgt Ion	Resp	Lower	Upper
228	1541631		
226	28.9	23.7	35.5
229	19.5	15.8	23.8



#86
 Di-n-octyl phthalate
 Concen: 22.635 ng/ul
 RT: 21.98 min Scan# 3229
 Delta R.T. -0.00 min
 Lab File: BM017877.D
 Acq: 03 Dec 2018 11:24

Tgt Ion:149 Resp: 1785316

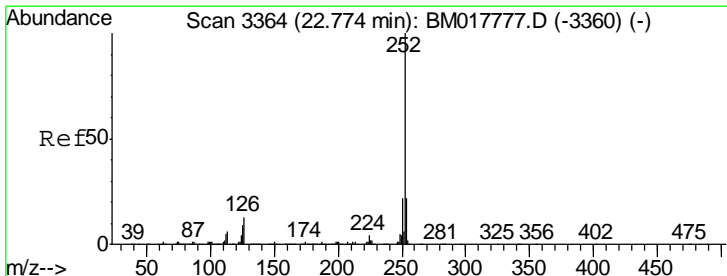
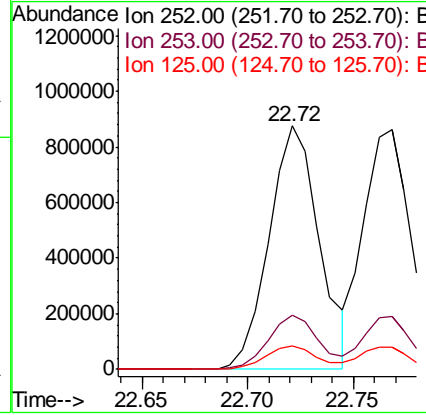
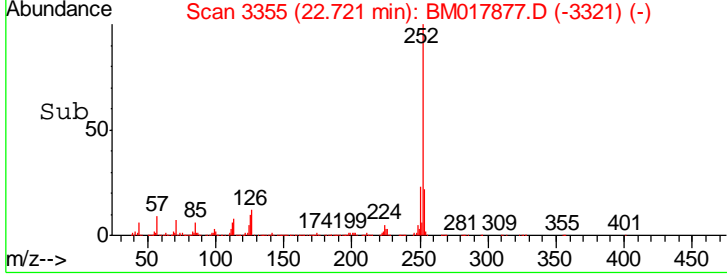
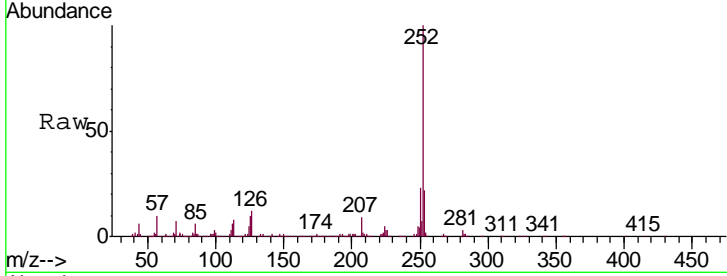




#87
 Benzo(b)fluoranthene
 Concen: 20.695 ng/ul
 RT: 22.72 min Scan# 3355
 Delta R.T. -0.00 min
 Lab File: BM017877.D
 Acq: 03 Dec 2018 11:24

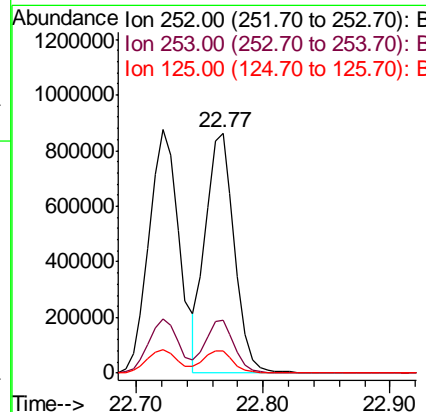
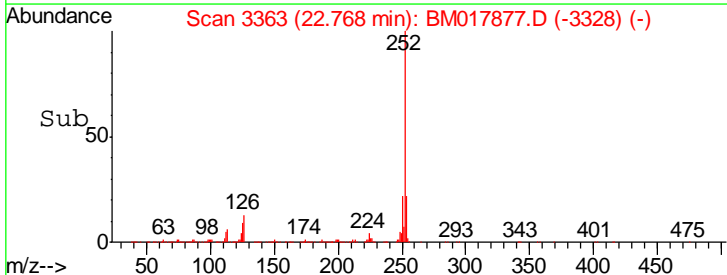
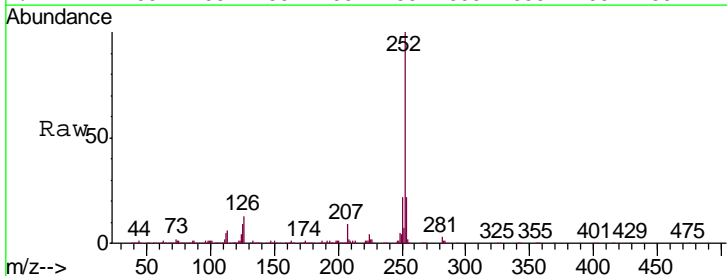
Instrument :
 BNA_M
 ClientSampled :
 SSTD02077

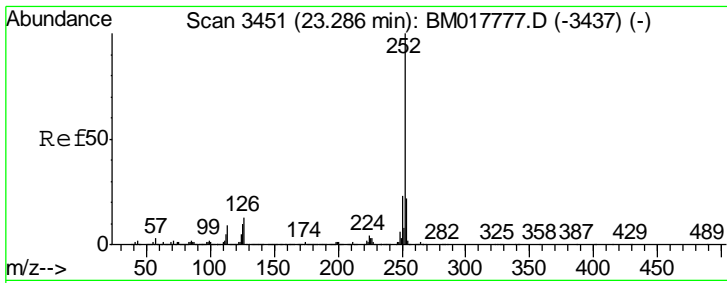
Tgt Ion	Resp	Lower	Upper
252	100		
253	22.2	17.0	25.4
125	9.7	7.3	10.9



#88
 Benzo(k)fluoranthene
 Concen: 19.982 ng/ul
 RT: 22.77 min Scan# 3363
 Delta R.T. 0.01 min
 Lab File: BM017877.D
 Acq: 03 Dec 2018 11:24

Tgt Ion	Resp	Lower	Upper
252	100		
253	21.9	17.4	26.0
125	9.0	7.1	10.7



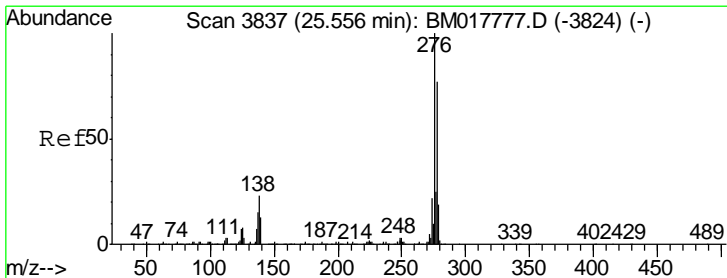
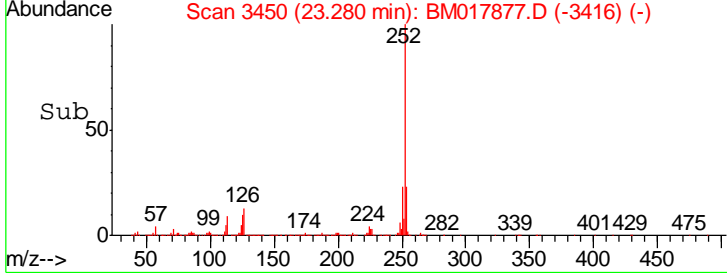
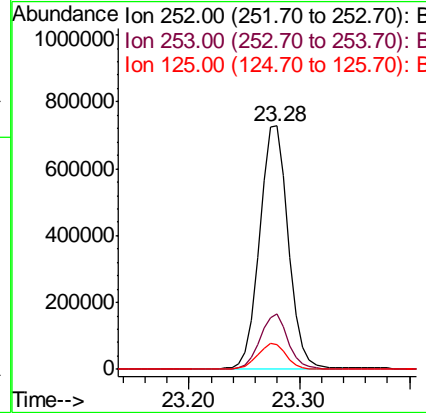
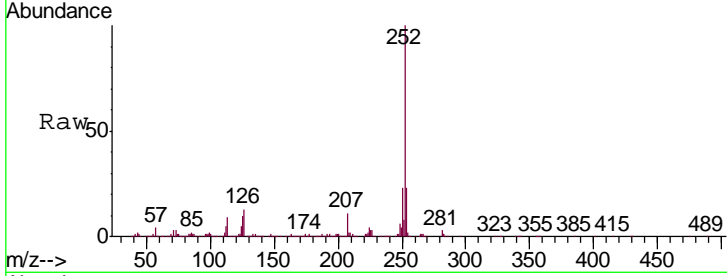


#90
 Benzo(a)pyrene
 Concen: 20.095 ng/ul
 RT: 23.28 min Scan# 3450
 Delta R.T. -0.00 min
 Lab File: BM017877.D
 Acq: 03 Dec 2018 11:24

Instrument :
 BNA_M
 ClientSampled :
 SST02077

Tgt Ion: 252 Resp: 1333937

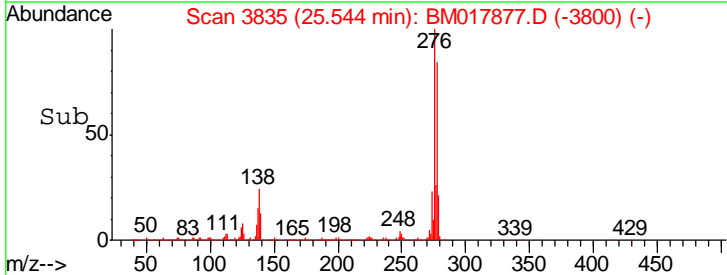
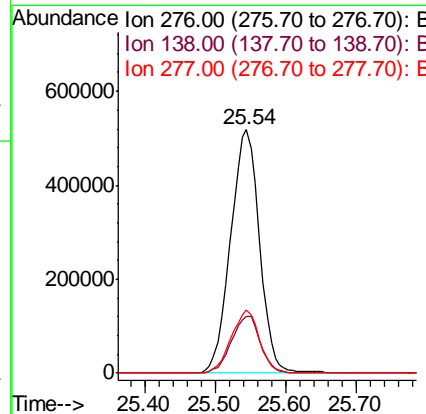
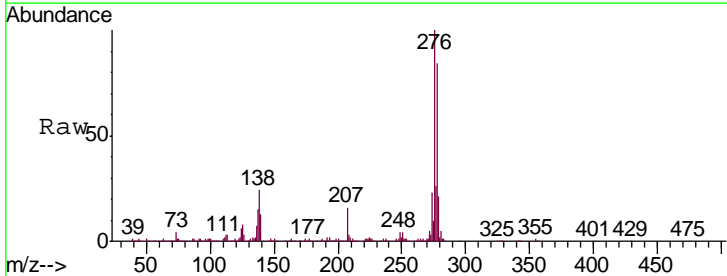
Ion	Ratio	Lower	Upper
252	100		
253	22.7	17.4	26.0
125	10.2	7.9	11.9

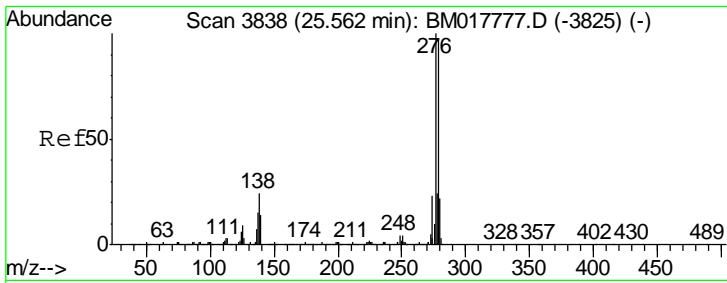


#91
 Indeno(1,2,3-cd)pyrene
 Concen: 20.995 ng/ul
 RT: 25.54 min Scan# 3835
 Delta R.T. 0.01 min
 Lab File: BM017877.D
 Acq: 03 Dec 2018 11:24

Tgt Ion: 276 Resp: 1476679

Ion	Ratio	Lower	Upper
276	100		
138	23.5	18.2	27.2
277	25.9	20.2	30.4



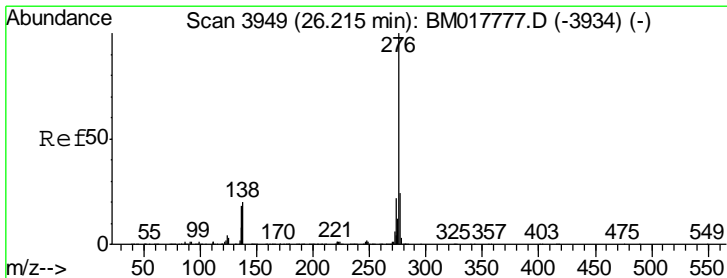
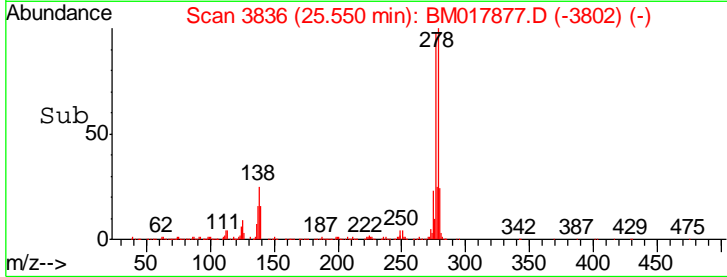
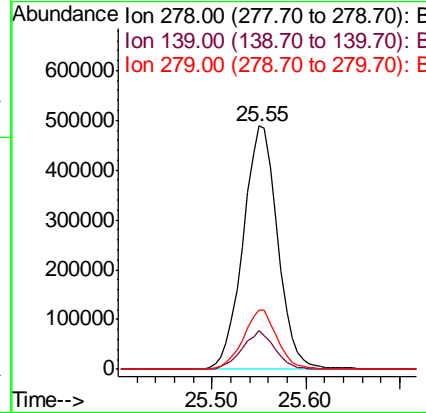
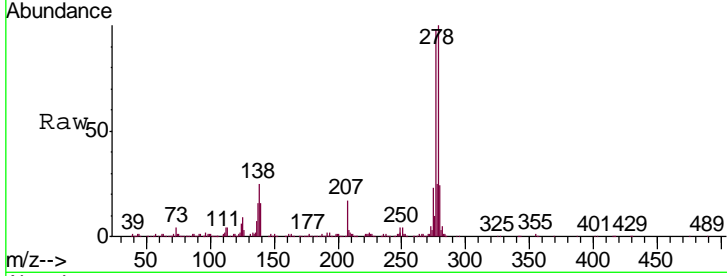


#92
 Dibenzo(a,h)anthracene
 Concen: 20.992 ng/ul
 RT: 25.55 min Scan# 3836
 Delta R.T. -0.00 min
 Lab File: BM017877.D
 Acq: 03 Dec 2018 11:24

Instrument :
 BNA_M
 ClientSampled :
 SSTD02077

Tgt Ion: 278 Resp: 1246603

Ion	Ratio	Lower	Upper
278	100		
139	15.7	11.5	17.3
279	24.2	18.9	28.3



#93
 Benzo(g,h,i)perylene
 Concen: 21.407 ng/ul
 RT: 26.20 min Scan# 3947
 Delta R.T. -0.00 min
 Lab File: BM017877.D
 Acq: 03 Dec 2018 11:24

Tgt Ion: 276 Resp: 1216870

Ion	Ratio	Lower	Upper
276	100		
138	20.5	15.8	23.6
277	23.9	18.6	27.8

