

Data Path : \\74.0.250.170\SVOASRV\HPCHEM1\BNA M\DATA\BM120617\  
 Data File : BM013220.D  
 Acq On : 06 Dec 2017 21:33  
 Operator : SJ/JU  
 Sample : I6689-22  
 Misc :  
 ALS Vial : 12 Sample Multiplier: 1

Instrument :  
 BNA\_M  
 ClientSampleId :  
 JHPT8

Quant Time: Dec 07 03:27:20 2017  
 Quant Method : Z:\HPCHEM1\BNA M\METHODS\SOM-EPA-BM113017.M  
 Quant Title : SVOA CALIBRATION  
 QLast Update : Thu Dec 07 03:25:48 2017  
 Response via : Initial Calibration

Internal Standards	R.T.	QIon	Response	Conc	Units	Dev(Min)
1) 1,4-Dichlorobenzene-d4	7.70	152	220719	20.00	ng/ul	0.00
18) Naphthalene-d8	10.48	136	977018	20.00	ng/ul	0.00
35) Acenaphthene-d10	14.34	164	612963	20.00	ng/ul	0.00
61) Phenanthrene-d10	17.09	188	1495572	20.00	ng/ul	0.00
75) Chrysene-d12	21.27	240	1530969	20.00	ng/ul	0.00
83) Perylene-d12	23.50	264	1267754	20.00	ng/ul	0.00

## System Monitoring Compounds

3) 1,4-Dioxane-d8	3.24	96	25992	5.83	ng/uL	0.00
5) Phenol-d5	6.87	99	91382	4.78	ng/ul	0.00
7) Bis-(2-Chloroethyl)ether-d	7.04	67	205009	18.82	ng/ul	0.00
9) 2-Chlorophenol-d4	7.23	132	241029	16.15	ng/ul	0.00
13) 4-Methylphenol-d8	8.40	113	173490	10.63	ng/ul	0.00
19) Nitrobenzene-d5	8.85	128	153189	19.77	ng/ul	0.00
22) 2-Nitrophenol-d4	9.57	143	162223	19.56	ng/ul	0.00
26) 2,4-Dichlorophenol-d3	10.10	165	322385	18.87	ng/ul	0.00
29) 4-Chloroaniline-d4	10.63	131	144	0.01	ng/ul	0.00
43) Dimethylphthalate-d6	13.76	166	1101643	20.20	ng/ul	0.00
46) Acenaphthylene-d8	14.03	160	1243077	18.47	ng/ul	0.00
51) 4-Nitrophenol-d4	14.55	143	43385	4.58	ng/ul	0.00
57) Fluorene-d10	15.33	176	852406	18.17	ng/ul	0.00
62) 4,6-Dinitro-2-methylphenol	15.46	200	159080	16.91	ng/ul	0.00
70) Anthracene-d10	17.19	188	1314008	17.54	ng/ul	0.00
76) Pyrene-d10	19.48	212	1450124	19.01	ng/ul	0.00
87) Benzo(a)pyrene-d12	23.36	264	1058565	16.39	ng/ul	0.00

## Target Compounds

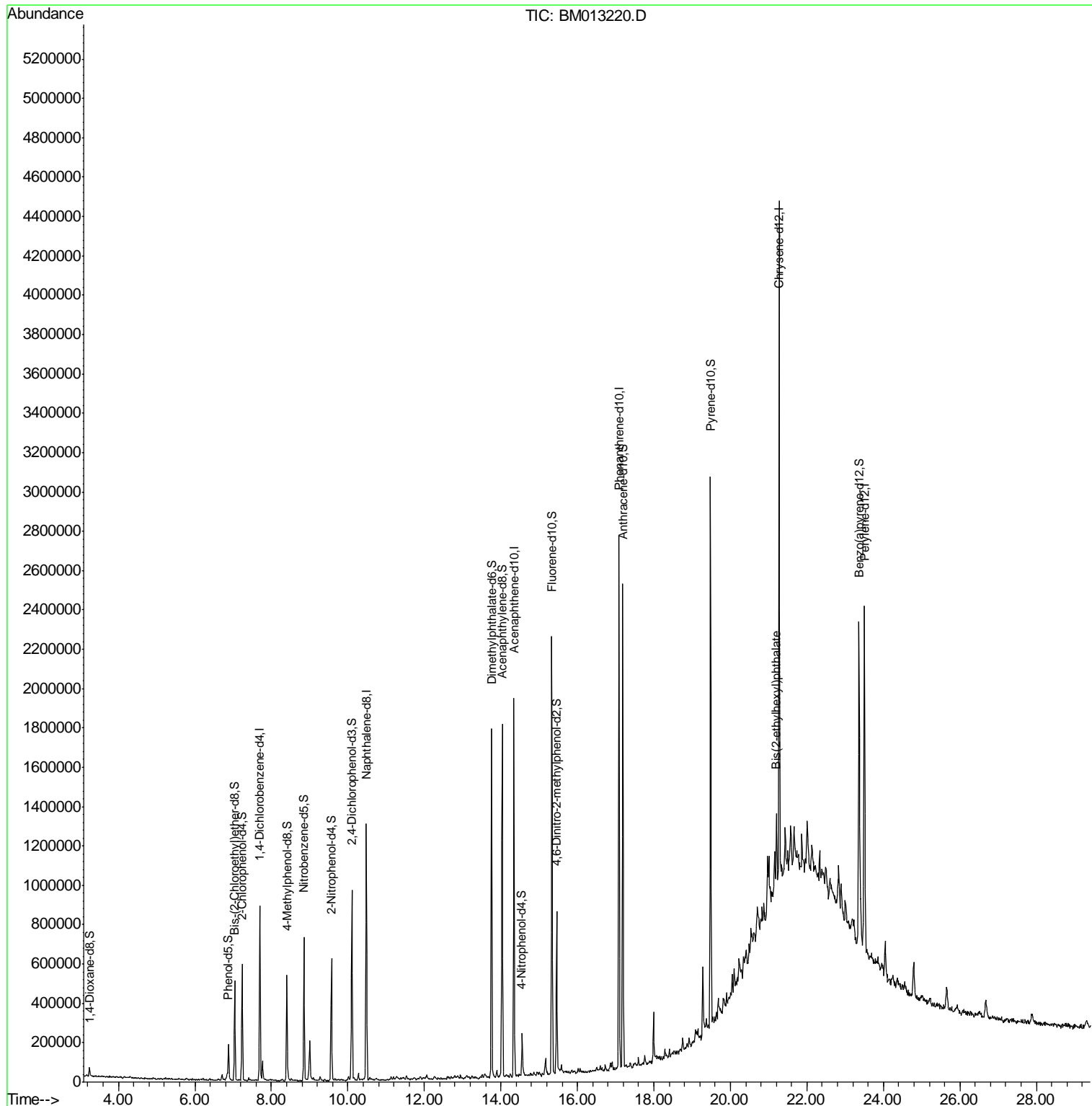
Target Compounds	R.T.	QIon	Response	Conc	Units	Ovalue
81) Bis(2-ethylhexyl)phthalate	21.20	149	90829	1.658	ng/ul#	99

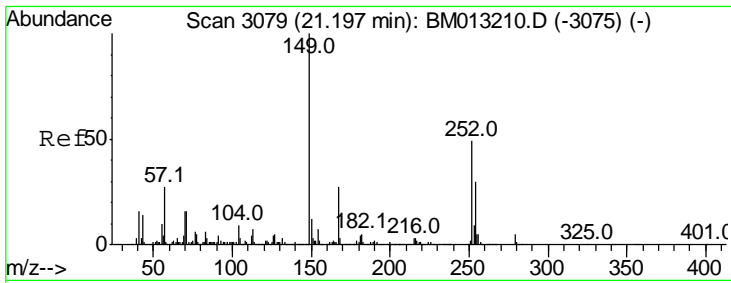
(#) = qualifier out of range (m) = manual integration (+) = signals summed

Data Path : \\74.0.250.170\SVOASRV\HPCHEM1\BNA M\DATA\BM120617\  
 Data File : BM013220.D  
 Acq On : 06 Dec 2017 21:33  
 Operator : SJ/JU  
 Sample : I6689-22  
 Misc :  
 ALS Vial : 12 Sample Multiplier: 1

Instrument :  
 BNA\_M  
 ClientSampleId :  
 JHPT8

Quant Time: Dec 07 03:27:20 2017  
 Quant Method : Z:\HPCHEM1\BNA M\METHODS\SOM-EPA-BM113017.M  
 Quant Title : SVOA CALIBRATION  
 QLast Update : Thu Dec 07 03:25:48 2017  
 Response via : Initial Calibration





#81  
 Bis(2-ethylhexyl)phthalate  
 Concen: 1.658 ng/ul  
 RT: 21.20 min Scan# 3079  
 Delta R.T. -0.00 min  
 Lab File: BM013220.D  
 Acq: 06 Dec 2017 21:33

Instrument :  
 BNA\_M  
 ClientSampleID :  
 JHPT8

Total Ion	Ratio	Lower	Upper
149	100		
167	28.8	22.8	34.2
279	4.8	4.9	7.3#

