

Data Path : Z:\HPCHEM1\BNA M\DATA\BM121016\
 Data File : BM008230.D
 Acq On : 10 Dec 2016 13:51
 Operator : UM/SJ
 Sample : H5905-03
 Misc :
 ALS Vial : 7 Sample Multiplier: 1

Instrument :
 BNA_M
ClientSampleId :
 DA805

Manual Integrations
APPROVED
 UMANGI
 12/12/2016 6:50:18 PM

Quant Time: Dec 12 03:12:31 2016
 Quant Method : Z:\HPCHEM1\BNA M\METHODS\SOM-EPA-SIM-BM112116.M
 Quant Title : ASP BNA STANDARDS FOR 5 POINT CALIBRATION
 QLast Update : Mon Dec 12 02:45:24 2016
 Response via : Initial Calibration

Internal Standards	R.T.	QIon	Response	Conc	Units	Dev(Min)
1) 1,4-Dichlorobenzene-d4	7.70	152	639	0.40	ng/ul	0.00
2) Naphthalene-d8	10.46	136	2228	0.40	ng/ul	-0.01
6) Acenaphthene-d10	14.33	164	1433	0.40	ng/ul	0.00
10) Phenanthrene-d10	17.07	188	2501	0.40	ng/ul	-0.02
16) Chrysene-d12	21.27	240	1836	0.40	ng/ul	0.00
20) Perylene-d12	23.51	264	1752	0.40	ng/ul	0.00
System Monitoring Compounds						
4) 2-Methylnaphthalene-d10	12.06	152	802	0.25	ng/ul	-0.02
14) Fluoranthene-d10	19.11	212	1530m	0.22	ng/ul	-0.02
Target Compounds						
						Ovalue
3) Naphthalene	10.51	128	4195	0.67	ng/ul	97
5) 2-Methylnaphthalene	12.12	142	8187	2.04	ng/ul	100
8) Acenaphthene	14.38	153	608	0.12	ng/ul	95
9) Fluorene	15.38	166	1620m	0.29	ng/ul	
12) Phenanthrene	17.11	178	1051m	0.13	ng/ul	
15) Fluoranthene	19.14	202	231m	0.02	ng/ul	

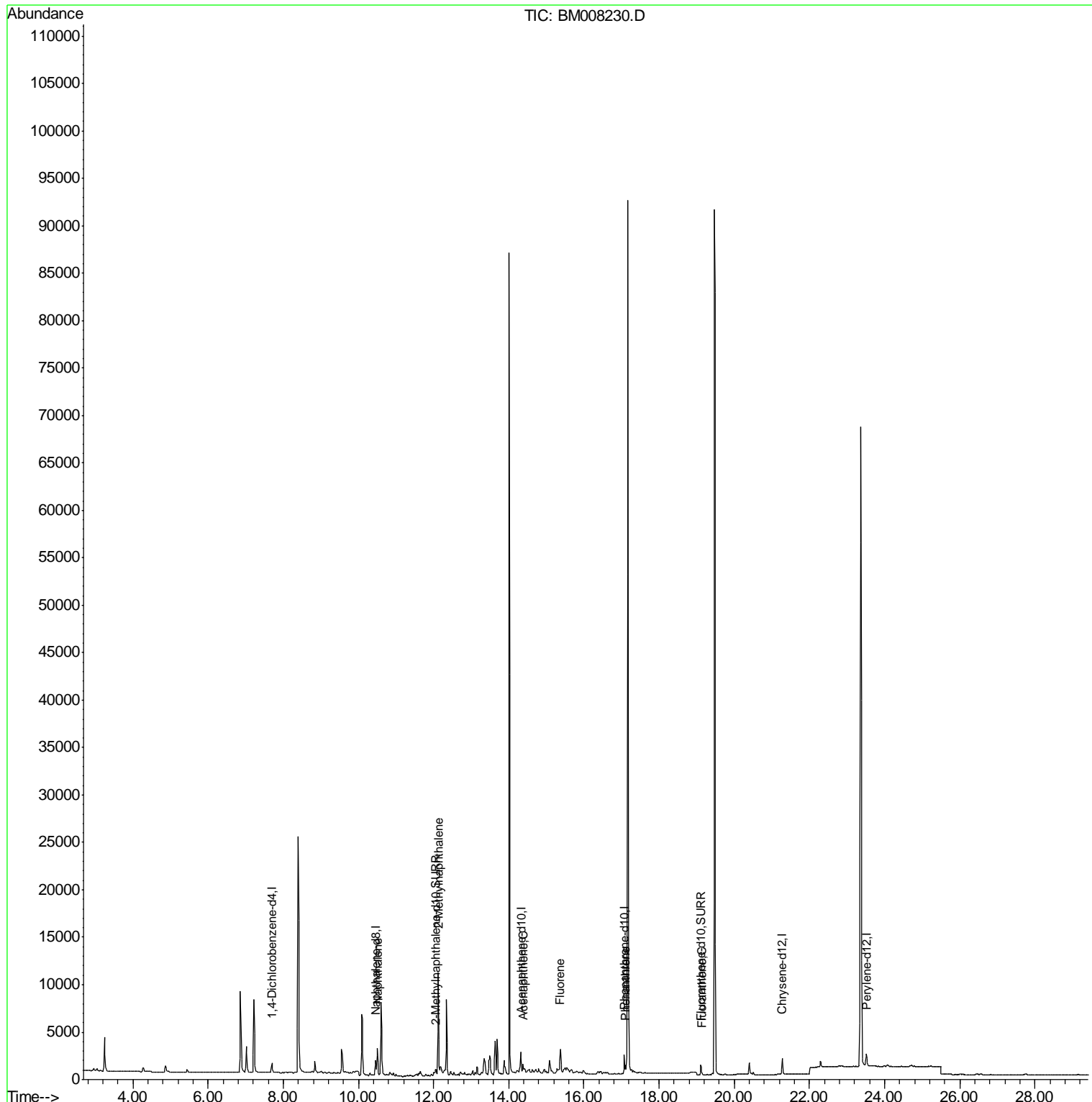
(#) = qualifier out of range (m) = manual integration (+) = signals summed

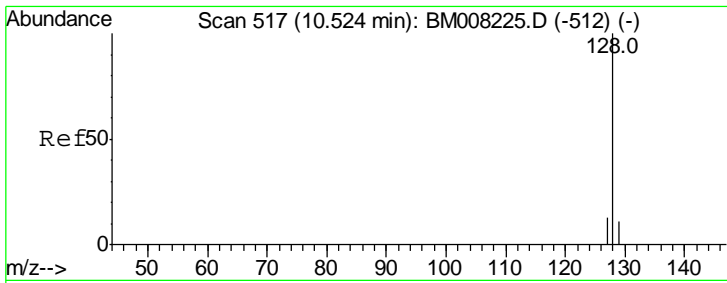
Data Path : Z:\HPCHEM1\BNA M\DATA\BM121016\
 Data File : BM008230.D
 Acq On : 10 Dec 2016 13:51
 Operator : UM/SJ
 Sample : H5905-03
 Misc :
 ALS Vial : 7 Sample Multiplier: 1

Instrument :
 BNA_M
ClientSampled :
 DA805

Manual Integrations
APPROVED
 UMANGI
 12/12/2016 6:50:18 PM

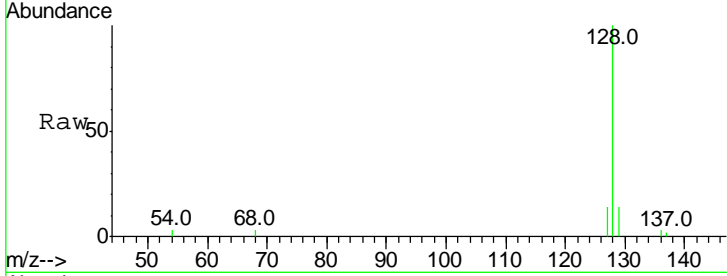
Quant Time: Dec 12 03:12:31 2016
 Quant Method : Z:\HPCHEM1\BNA M\METHODS\SOM-EPA-SIM-BM112116.M
 Quant Title : ASP BNA STANDARDS FOR 5 POINT CALIBRATION
 QLast Update : Mon Dec 12 02:45:24 2016
 Response via : Initial Calibration





#3
 Naphthalene
 Concen: 0.67 ng/ul
 RT: 10.51 min Scan# 516
 Delta R.T. -0.01 min
 Lab File: BM008230.D
 Acq: 10 Dec 2016 13:51

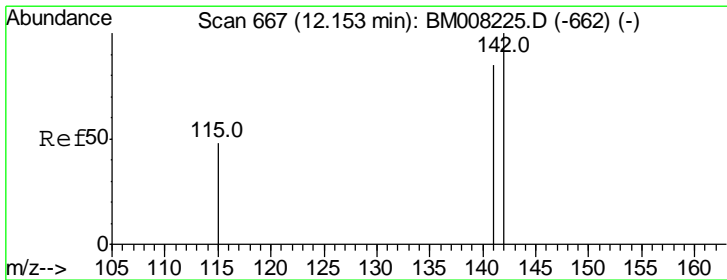
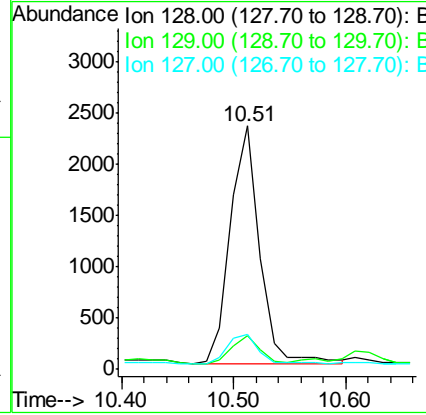
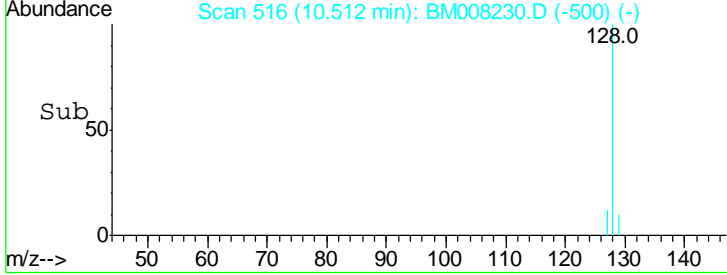
Instrument :
 BNA_M
ClientSampled :
 DA805



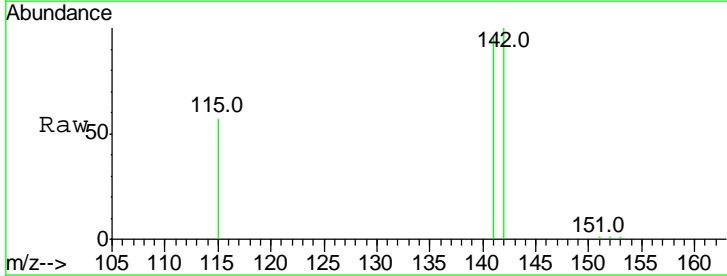
Tgt Ion:128 Resp: 4195

Ion	Ratio	Lower	Upper
128	100		
129	13.6	11.3	16.9
127	14.4	12.8	19.2

Manual Integrations
APPROVED
 UMANGI
 12/12/2016 6:50:18 PM

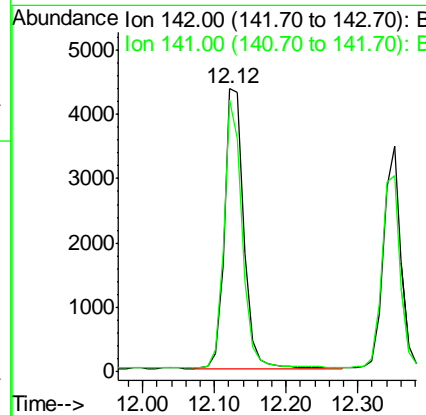
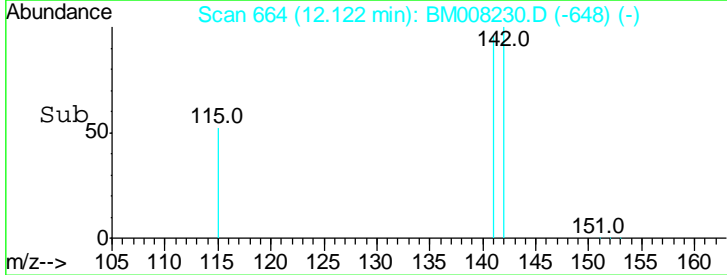


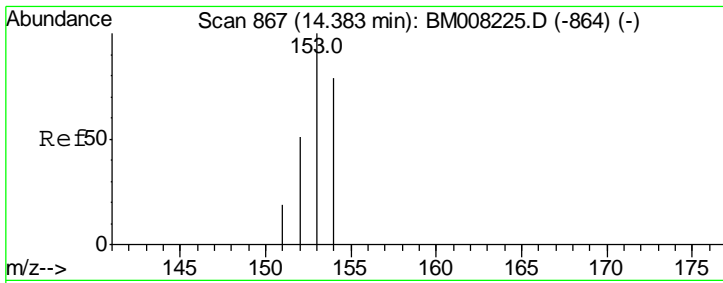
#5
 2-Methylnaphthalene
 Concen: 2.04 ng/ul
 RT: 12.12 min Scan# 664
 Delta R.T. -0.03 min
 Lab File: BM008230.D
 Acq: 10 Dec 2016 13:51



Tgt Ion:142 Resp: 8187

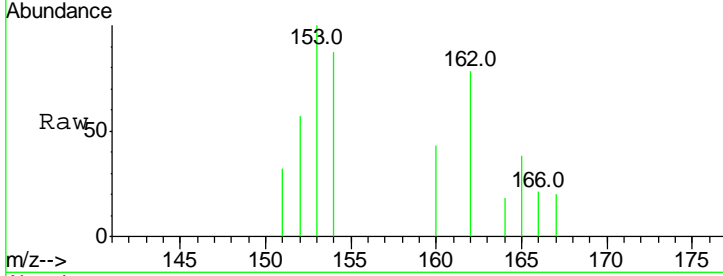
Ion	Ratio	Lower	Upper
142	100		
141	90.9	72.6	108.8





#8
 Acenaphthene
 Concen: 0.12 ng/ul
 RT: 14.38 min Scan# 867
 Delta R.T. 0.00 min
 Lab File: BM008230.D
 Acq: 10 Dec 2016 13:51

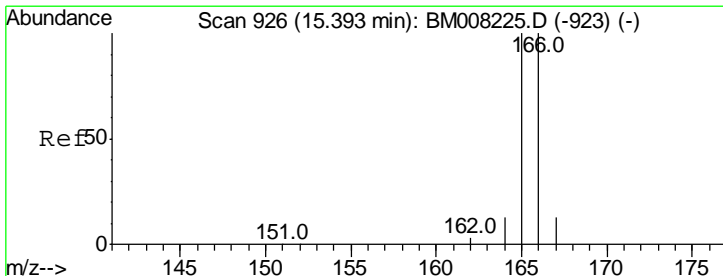
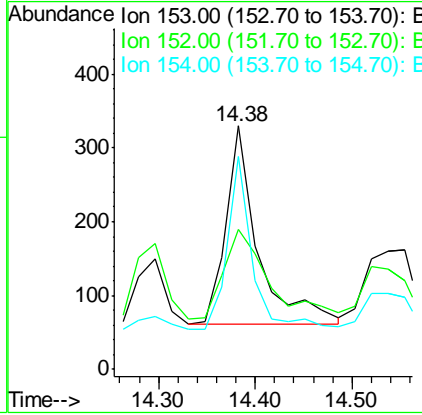
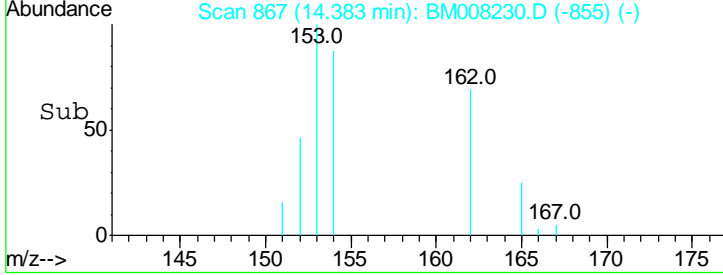
Instrument :
 BNA_M
 ClientSampled :
 DA805



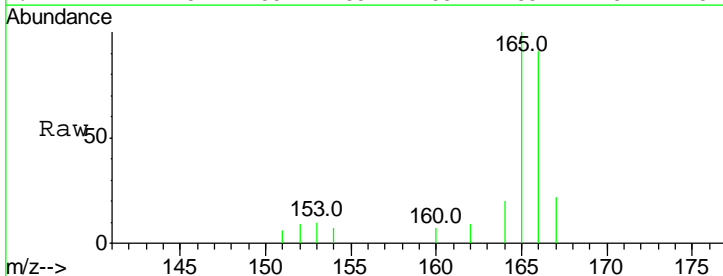
Tgt Ion: 153 Resp: 608

Ion	Ratio	Lower	Upper
153	100		
152	57.3	40.3	60.5
154	87.3	71.4	107.2

Manual Integrations
 APPROVED
 UMANGI
 12/12/2016 6:50:18 PM

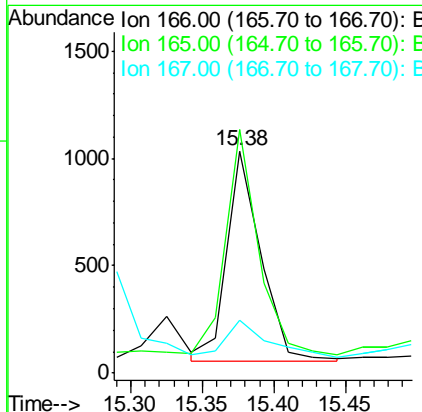
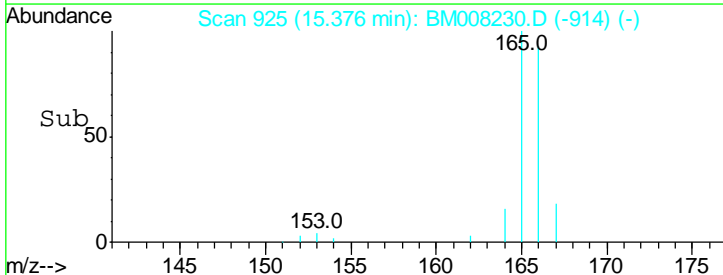


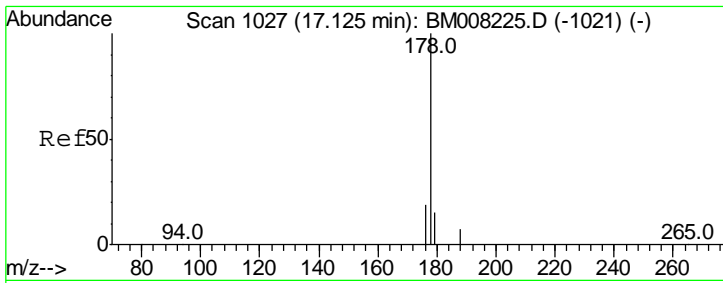
#9
 Fluorene
 Concen: 0.29 ng/ul m
 RT: 15.38 min Scan# 925
 Delta R.T. -0.02 min
 Lab File: BM008230.D
 Acq: 10 Dec 2016 13:51



Tgt Ion: 166 Resp: 1620

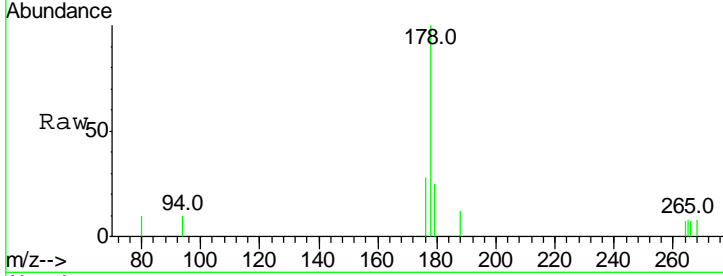
Ion	Ratio	Lower	Upper
166	100		
165	109.6	73.4	110.2
167	24.1	14.6	22.0#





#12
 Phenanthrene
 Concen: 0.13 ng/ul m
 RT: 17.11 min Scan# 1026
 Delta R.T. -0.02 min
 Lab File: BM008230.D
 Acq: 10 Dec 2016 13:51

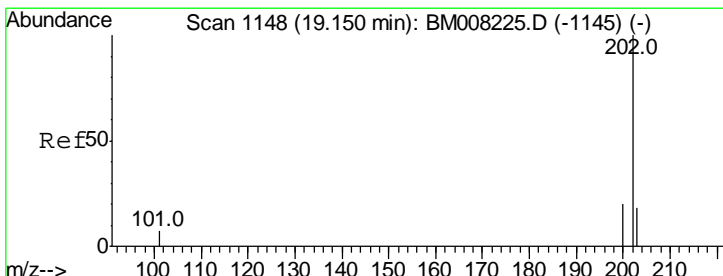
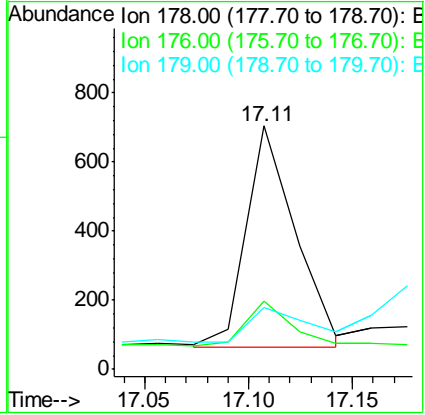
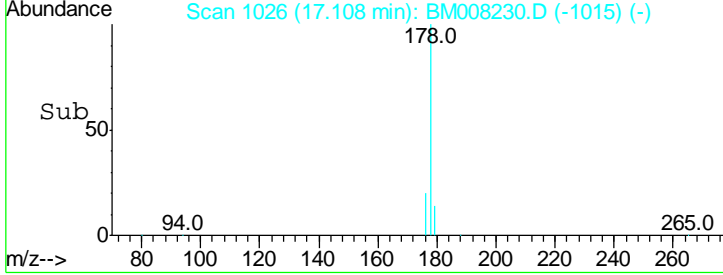
Instrument :
 BNA_M
 ClientSampled :
 DA805



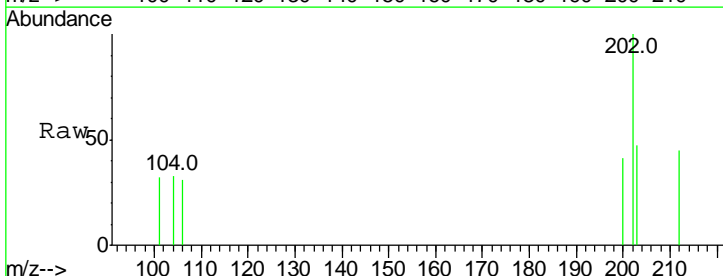
Tgt Ion: 178 Resp: 1051

Ion	Ratio	Lower	Upper
178	100		
176	27.8	18.4	27.6#
179	25.2	13.6	20.4#

Manual Integrations
APPROVED
 UMANGI
 12/12/2016 6:50:18 PM



#15
 Fluoranthene
 Concen: 0.02 ng/ul m
 RT: 19.14 min Scan# 1148
 Delta R.T. -0.01 min
 Lab File: BM008230.D
 Acq: 10 Dec 2016 13:51



Tgt Ion: 202 Resp: 231

Ion	Ratio	Lower	Upper
202	100		
101	31.8	0.0	30.3#
203	47.3	0.0	39.5#

