

Data Path : \\74.0.250.170\SVOASRV\HPCHEM1\BNA M\DATA\BM121117\
 Data File : BM013312.D
 Acq On : 11 Dec 2017 19:25
 Operator : SJ/JU
 Sample : I6776-10
 Misc :
 ALS Vial : 16 Sample Multiplier: 1

Instrument :
 BNA_M
 ClientSampleId :
 F9A62

Quant Time: Dec 12 02:02:44 2017
 Quant Method : Z:\HPCHEM1\BNA M\METHODS\SOM-EPA-BM113017.M
 Quant Title : SVOA CALIBRATION
 QLast Update : Tue Dec 12 01:04:42 2017
 Response via : Initial Calibration

Internal Standards	R.T.	QIon	Response	Conc	Units	Dev(Min)
1) 1,4-Dichlorobenzene-d4	7.69	152	172975	20.00	ng/ul	0.00
18) Naphthalene-d8	10.47	136	753291	20.00	ng/ul	0.00
35) Acenaphthene-d10	14.33	164	463085	20.00	ng/ul	0.00
61) Phenanthrene-d10	17.08	188	1115712	20.00	ng/ul	0.00
75) Chrysene-d12	21.27	240	1322368	20.00	ng/ul	0.00
83) Perylene-d12	23.49	264	1204116	20.00	ng/ul	0.00

System Monitoring Compounds

3) 1,4-Dioxane-d8	3.23	96	20303	5.81	ng/uL	0.00
5) Phenol-d5	6.87	99	454936	30.39	ng/ul	0.00
7) Bis-(2-Chloroethyl)ether-d	7.03	67	274925	32.21	ng/ul	0.00
9) 2-Chlorophenol-d4	7.22	132	370420	31.67	ng/ul	0.00
13) 4-Methylphenol-d8	8.40	113	374891	29.32	ng/ul	0.00
19) Nitrobenzene-d5	8.85	128	195662	32.75	ng/ul	0.00
22) 2-Nitrophenol-d4	9.56	143	218283	34.14	ng/ul	0.00
26) 2,4-Dichlorophenol-d3	10.09	165	401388	30.47	ng/ul	0.00
29) 4-Chloroaniline-d4	10.61	131	527699	43.58	ng/ul	0.00
43) Dimethylphthalate-d6	13.74	166	1413249	34.29	ng/ul	0.00
46) Acenaphthylene-d8	14.02	160	1723230	33.89	ng/ul	0.00
51) 4-Nitrophenol-d4	14.54	143	221371	30.92	ng/ul	0.00
57) Fluorene-d10	15.33	176	1185318	33.45	ng/ul	0.00
62) 4,6-Dinitro-2-methylphenol	15.45	200	212534	30.28	ng/ul	0.00
70) Anthracene-d10	17.17	188	1949424	34.89	ng/ul	0.00
76) Pyrene-d10	19.47	212	2302273	34.95	ng/ul	0.00
87) Benzo(a)pyrene-d12	23.35	264	2132052	34.76	ng/ul	0.00

Target Compounds

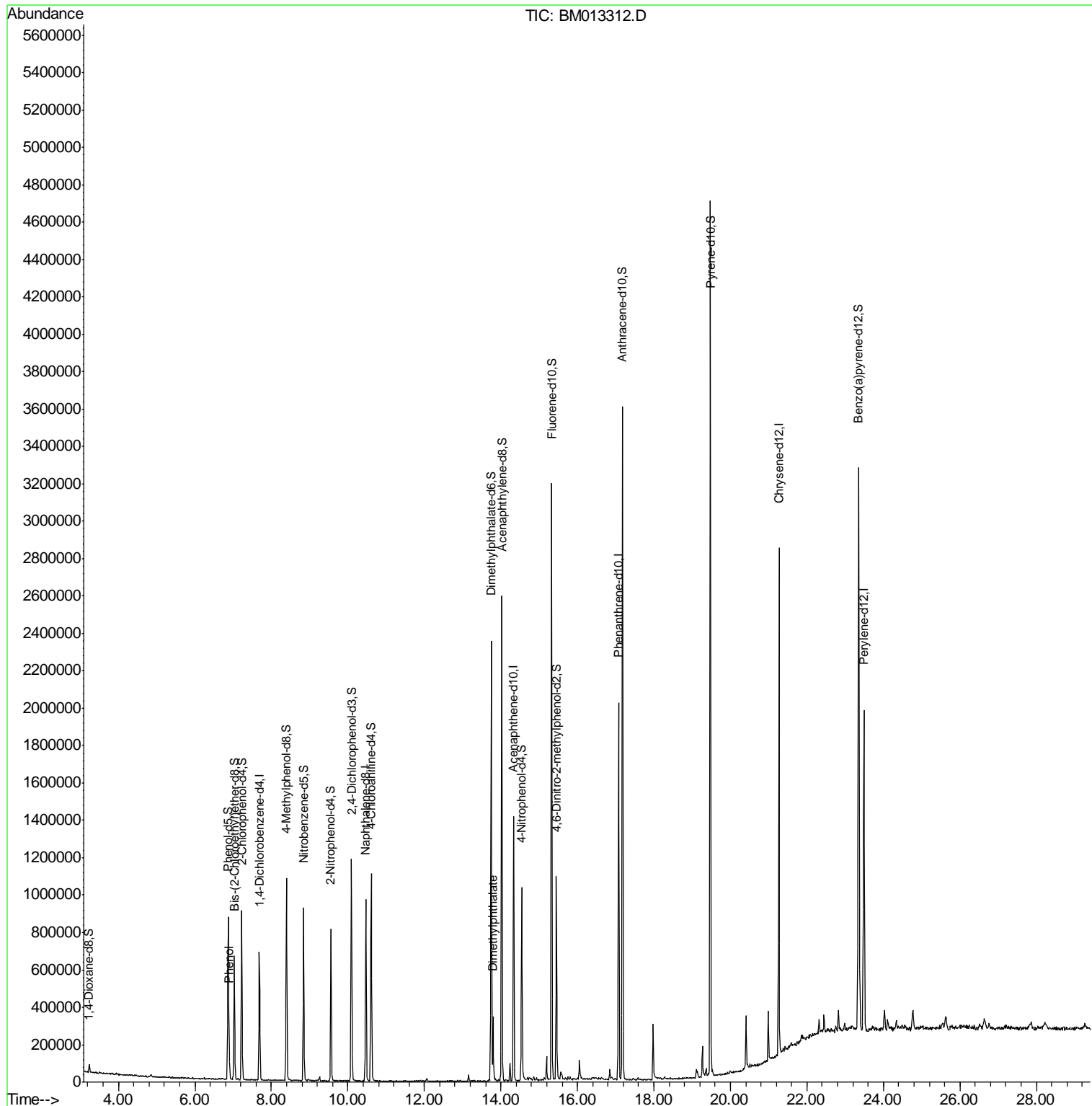
					Ovalue
6) Phenol	6.89	94	75472	5.101	ng/ul 97
44) Dimethylphthalate	13.79	163	199895	5.072	ng/ul 98

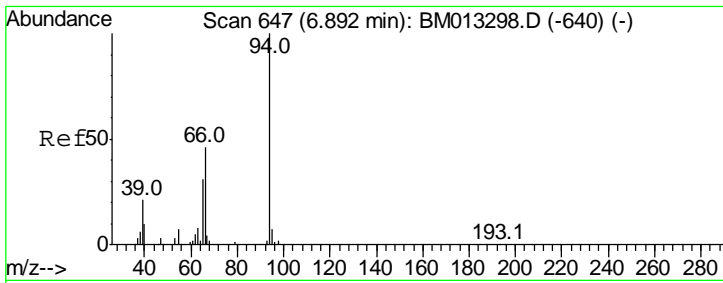
(#) = qualifier out of range (m) = manual integration (+) = signals summed

Data Path : \\74.0.250.170\SVOASRV\HPCHEM1\BNA M\DATA\BM121117\
 Data File : BM013312.D
 Acq On : 11 Dec 2017 19:25
 Operator : SJ/JU
 Sample : I6776-10
 Misc :
 ALS Vial : 16 Sample Multiplier: 1

Instrument :
 BNA_M
 ClientSampleId :
 F9A62

Quant Time: Dec 12 02:02:44 2017
 Quant Method : Z:\HPCHEM1\BNA M\METHODS\SOM-EPA-BM113017.M
 Quant Title : SVOA CALIBRATION
 QLast Update : Tue Dec 12 01:04:42 2017
 Response via : Initial Calibration

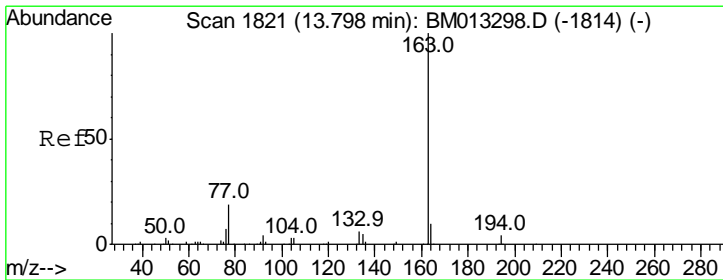
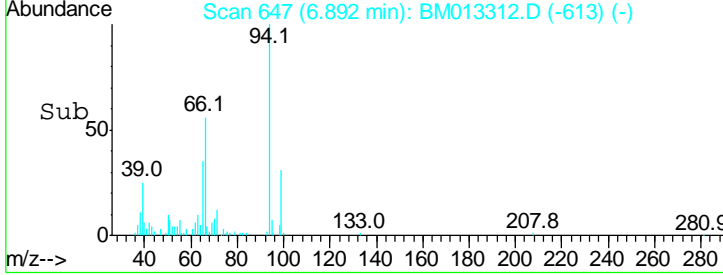
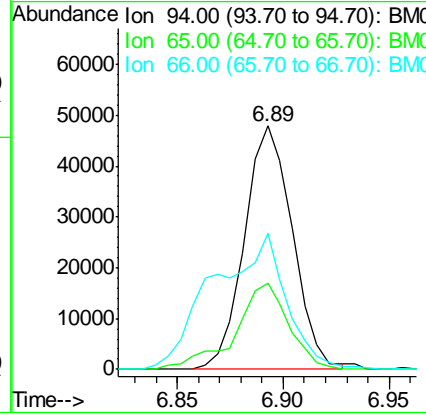
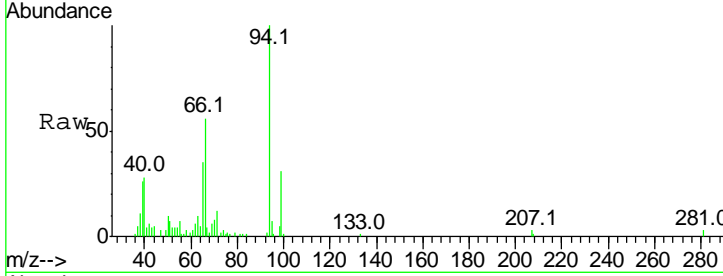




#6
 Phenol
 Concen: 5.101 ng/ul
 RT: 6.89 min Scan# 647
 Delta R.T. 0.00 min
 Lab File: BM013312.D
 Acq: 11 Dec 2017 19:25

Instrument :
 BNA_M
ClientSampled :
 F9A62

Tgt Ion	Resp	Lower	Upper
94	100		
65	35.4	28.2	42.4
66	55.7	47.2	70.8



#44
 Dimethylphthalate
 Concen: 5.072 ng/ul
 RT: 13.79 min Scan# 1820
 Delta R.T. -0.01 min
 Lab File: BM013312.D
 Acq: 11 Dec 2017 19:25

Tgt Ion	Resp	Lower	Upper
163	100		
194	3.6	3.5	5.3
164	9.6	8.2	12.4

