

Data Path : Z:\HPCHEM1\BNA M\DATA\BM121217\
 Data File : BM013338.D
 Acq On : 12 Dec 2017 13:57
 Operator : SJ/JU
 Sample : I6775-11
 Misc :
 ALS Vial : 6 Sample Multiplier: 1

Instrument :
 BNA_M
 ClientSampleId :
 F9A23

Quant Time: Dec 12 17:13:15 2017
 Quant Method : Z:\HPCHEM1\BNA M\METHODS\SOM-EPA-BM113017.M
 Quant Title : SVOA CALIBRATION
 QLast Update : Tue Dec 12 14:18:41 2017
 Response via : Initial Calibration

Internal Standards	R.T.	QIon	Response	Conc	Units	Dev(Min)
1) 1,4-Dichlorobenzene-d4	7.69	152	145129	20.00	ng/ul	0.00
18) Naphthalene-d8	10.46	136	643293	20.00	ng/ul	0.00
35) Acenaphthene-d10	14.33	164	406826	20.00	ng/ul	0.00
61) Phenanthrene-d10	17.08	188	1027234	20.00	ng/ul	0.00
75) Chrysene-d12	21.27	240	1154227	20.00	ng/ul	0.00
83) Perylene-d12	23.50	264	999101	20.00	ng/ul	0.00

System Monitoring Compounds

3) 1,4-Dioxane-d8	3.23	96	17088	5.83	ng/uL	0.00
5) Phenol-d5	6.86	99	399768	31.83	ng/ul	0.00
7) Bis-(2-Chloroethyl)ether-d	7.03	67	235225	32.84	ng/ul	0.00
9) 2-Chlorophenol-d4	7.22	132	329409	33.57	ng/ul	0.00
13) 4-Methylphenol-d8	8.39	113	345452	32.20	ng/ul	0.00
19) Nitrobenzene-d5	8.84	128	173666	34.04	ng/ul	0.00
22) 2-Nitrophenol-d4	9.56	143	190875	34.96	ng/ul	0.00
26) 2,4-Dichlorophenol-d3	10.09	165	356152	31.65	ng/ul	0.00
29) 4-Chloroaniline-d4	10.61	131	465776	45.04	ng/ul	0.00
43) Dimethylphthalate-d6	13.74	166	1291300	35.67	ng/ul	0.00
46) Acenaphthylene-d8	14.02	160	1549536	34.69	ng/ul	0.00
51) 4-Nitrophenol-d4	14.54	143	202416	32.18	ng/ul	0.00
57) Fluorene-d10	15.33	176	1092347	35.09	ng/ul	0.00
62) 4,6-Dinitro-2-methylphenol	15.45	200	167604	25.94	ng/ul	0.00
70) Anthracene-d10	17.17	188	1829678	35.57	ng/ul	0.00
76) Pyrene-d10	19.47	212	2178125	37.88	ng/ul	0.00
87) Benzo(a)pyrene-d12	23.36	264	1857330	36.50	ng/ul	0.00

Target Compounds

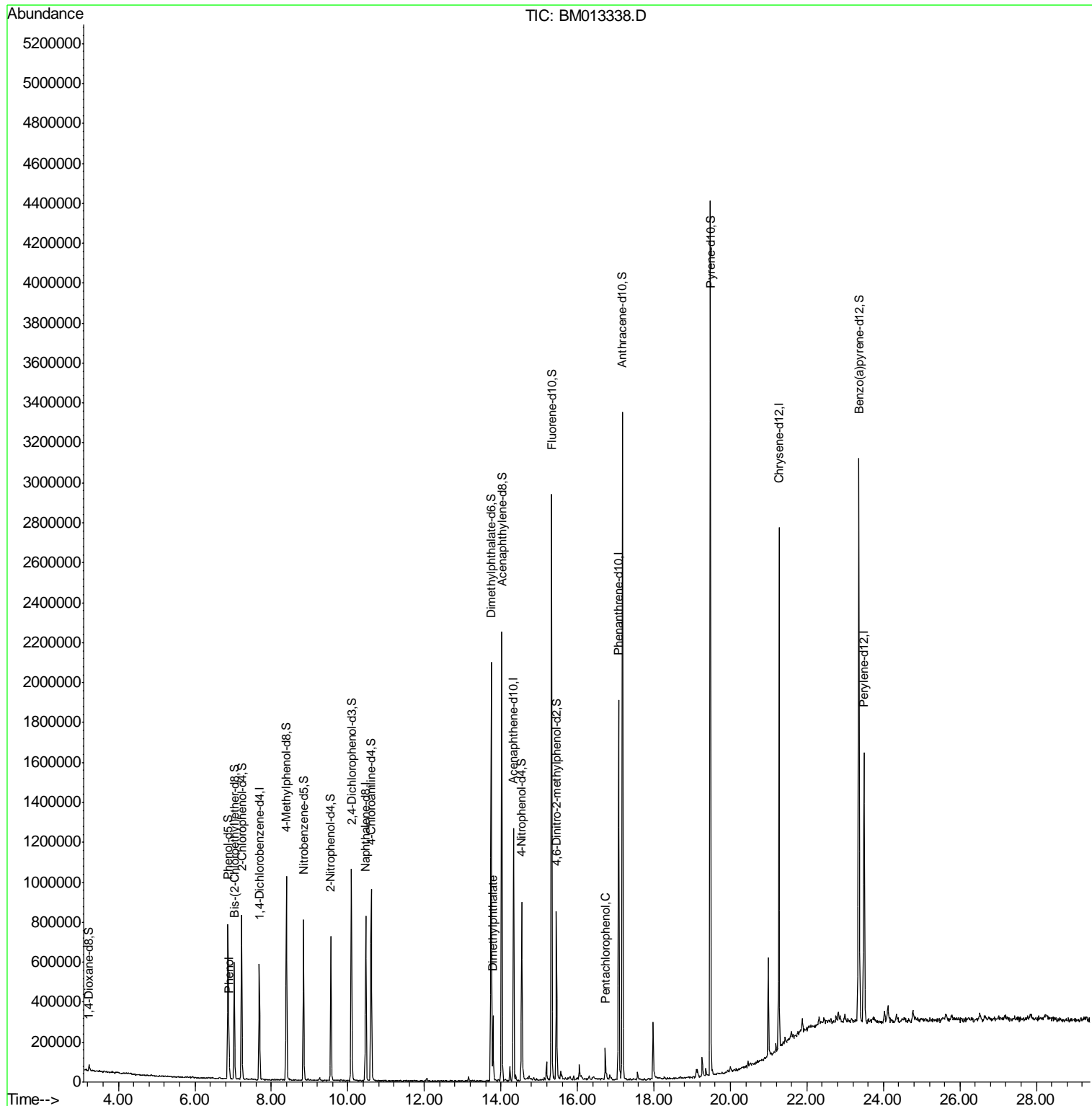
				Ovalue	
6) Phenol	6.89	94	60496	4.874	ng/ul# 84
44) Dimethylphthalate	13.79	163	188817	5.453	ng/ul 100
68) Pentachlorophenol	16.73	266	28228	3.665	ng/ul 97

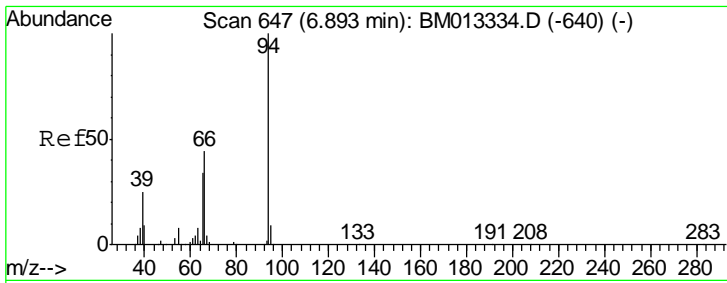
(#) = qualifier out of range (m) = manual integration (+) = signals summed

Data Path : Z:\HPCHEM1\BNA M\DATA\BM121217\
 Data File : BM013338.D
 Acq On : 12 Dec 2017 13:57
 Operator : SJ/JU
 Sample : I6775-11
 Misc :
 ALS Vial : 6 Sample Multiplier: 1

Instrument :
 BNA_M
 ClientSampled :
 F9A23

Quant Time: Dec 12 17:13:15 2017
 Quant Method : Z:\HPCHEM1\BNA M\METHODS\SOM-EPA-BM113017.M
 Quant Title : SVOA CALIBRATION
 QLast Update : Tue Dec 12 14:18:41 2017
 Response via : Initial Calibration

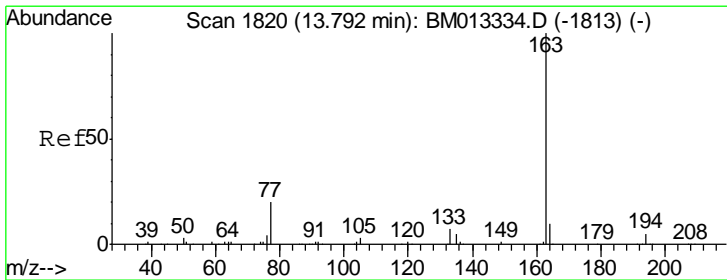
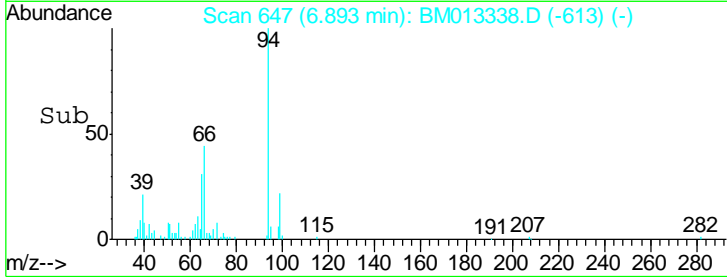
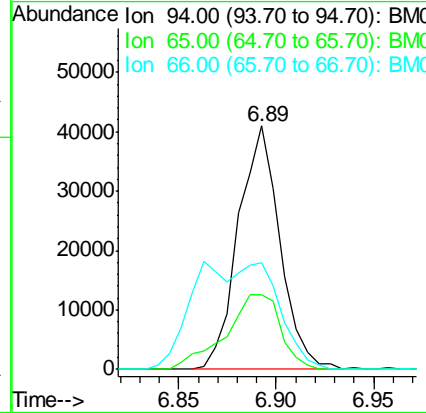
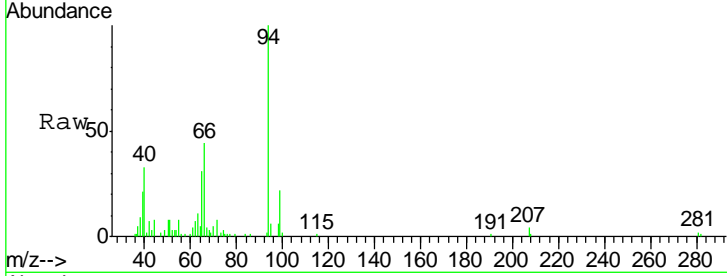




#6
 Phenol
 Concen: 4.874 ng/ul
 RT: 6.89 min Scan# 647
 Delta R.T. -0.00 min
 Lab File: BM013338.D
 Acq: 12 Dec 2017 13:57

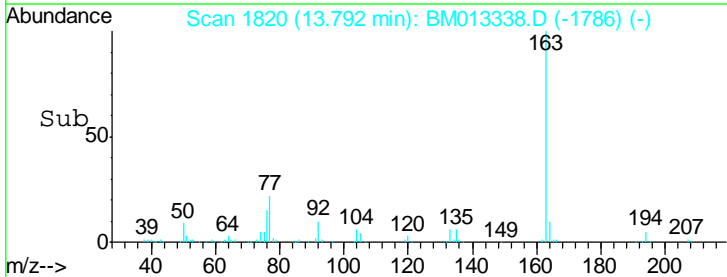
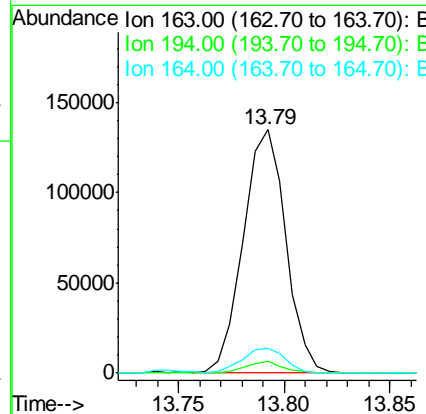
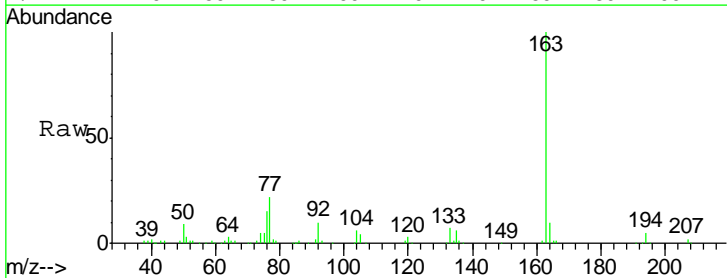
Instrument :
 BNA_M
 ClientSampled :
 F9A23

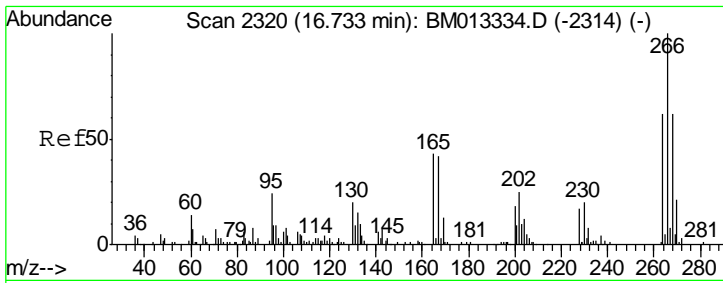
Tgt Ion	Resp	Lower	Upper
94	60496		
65	30.8	28.2	42.4
66	43.9	47.2	70.8#



#44
 Dimethylphthalate
 Concen: 5.453 ng/ul
 RT: 13.79 min Scan# 1820
 Delta R.T. -0.00 min
 Lab File: BM013338.D
 Acq: 12 Dec 2017 13:57

Tgt Ion	Resp	Lower	Upper
163	188817		
194	4.8	3.5	5.3
164	10.3	8.2	12.4





#68
 Pentachlorophenol
 Concen: 3.665 ng/ul
 RT: 16.73 min Scan# 2320
 Delta R.T. -0.00 min
 Lab File: BM013338.D
 Acq: 12 Dec 2017 13:57

Instrument :
 BNA_M
ClientSampled :
 F9A23

Tot Ion: 266 Resp: 28228

Ion	Ratio	Lower	Upper
266	100		
264	60.5	49.3	73.9
268	62.7	52.6	78.8

