

Data Path : Z:\SVOASRV\HPCHEM1\BNA\_M\DATA\BM121219\  
 Data File : BM024056.D  
 Acq On : 12 Dec 2019 13:34  
 Operator : JU  
 Sample : K6088-15  
 Misc :  
 ALS Vial : 8 Sample Multiplier: 1

Instrument :  
 BNA\_M  
 ClientSampleId :  
 C0BP3

Integration Parameters: LSCINT.P

Integrator: RTE  
 Smoothing : OFF  
 Sampling : 1  
 Start Thrs: 0.2  
 Stop Thrs : 0

Filtering: 5  
 Min Area: 0.1 % of largest Peak  
 Max Peaks: 100  
 Peak Location: TOP

If leading or trailing edge < 100 prefer < Baseline drop else tangent >  
 Peak separation: 5

Method : Z:\SVOASRV\HPCHEM1\BNA\_M\METHODS\SOM-EPA-BM112719MA.M  
 Title : SVOA CALIBRATION

Signal : TIC

peak #	R.T. min	first scan	max scan	last scan	PK TY	peak height	corr. area	corr. % max.	% of total
1	3.034	22	25	32	rVB2	44512	60940	1.06%	0.074%
2	3.534	107	110	119	rVB2	24043	39659	0.69%	0.048%
3	3.646	124	129	135	rVB2	45419	79118	1.38%	0.096%
4	3.728	140	143	147	rVB3	21553	27237	0.47%	0.033%
5	4.634	294	297	306	rVB	35661	57863	1.01%	0.070%
6	6.357	587	590	594	rVB5	6264	7302	0.13%	0.009%
7	6.663	636	642	657	rBV	854889	1534468	26.73%	1.854%
8	6.822	664	669	686	rBV	720565	1189428	20.72%	1.437%
9	7.010	695	701	714	rBV	956720	1547933	26.97%	1.871%
10	7.110	715	718	721	rVB5	7074	9747	0.17%	0.012%
11	7.469	772	779	790	rBV	1500379	2448647	42.66%	2.959%
12	7.563	790	795	800	rVB6	12192	19436	0.34%	0.023%
13	8.192	895	902	917	rBV	940418	1617659	28.18%	1.955%
14	8.304	917	921	927	rVB2	33769	55559	0.97%	0.067%
15	8.628	969	976	992	rVV	819462	1462533	25.48%	1.767%
16	8.751	995	997	1002	rVV5	4281	6803	0.12%	0.008%
17	8.810	1002	1007	1013	rVV8	5694	10994	0.19%	0.013%
18	9.063	1045	1050	1055	rBV	26262	41106	0.72%	0.050%
19	9.339	1089	1097	1106	rBV	650342	1146357	19.97%	1.385%
20	9.704	1157	1159	1166	rBV7	4303	9689	0.17%	0.012%
21	9.881	1181	1189	1211	rBV	1006364	1884032	32.82%	2.277%
22	10.239	1241	1250	1261	rBV	2092051	3531856	61.53%	4.268%
23	10.392	1269	1276	1297	rBV	799028	1641789	28.60%	1.984%
24	11.857	1518	1525	1531	rBV5	13581	29866	0.52%	0.036%
25	12.616	1647	1654	1655	rBV4	4616	7323	0.13%	0.009%
26	12.751	1671	1677	1680	rBV5	6258	10422	0.18%	0.013%
27	12.969	1711	1714	1720	rBV5	6769	10891	0.19%	0.013%
28	13.039	1722	1726	1729	rBV5	4308	5743	0.10%	0.007%
29	13.469	1792	1799	1803	rBV6	10963	16589	0.29%	0.020%
30	13.557	1807	1814	1818	rBV	2062475	2969749	51.74%	3.589%
31	13.604	1818	1822	1831	rVB	364254	546429	9.52%	0.660%
32	13.822	1852	1859	1874	rBV	2350698	3544832	61.76%	4.284%
33	14.069	1897	1901	1904	rVB5	6195	8634	0.15%	0.010%
34	14.133	1904	1912	1920	rBV	3079598	4603070	80.20%	5.562%

Data Path : Z:\SVOASRV\HPCHEM1\BNA\_M\DATA\BM121219\  
 Data File : BM024056.D  
 Acq On : 12 Dec 2019 13:34  
 Operator : JU  
 Sample : K6088-15  
 Misc :  
 ALS Vial : 8 Sample Multiplier: 1

Instrument :  
 BNA\_M  
 ClientSampleId :  
 C0BP3

## Integration Parameters: LSCINT.P

Integrator: RTE  
 Smoothing : OFF  
 Sampling : 1  
 Start Thrs: 0.2  
 Stop Thrs : 0

Filtering: 5  
 Min Area: 0.1 % of largest Peak  
 Max Peaks: 100  
 Peak Location: TOP

If leading or trailing edge < 100 prefer < Baseline drop else tangent >  
 Peak separation: 5

Method : Z:\SVOASRV\HPCHEM1\BNA\_M\METHODS\SOM-EPA-BM112719MA.M  
 Title : SVOA CALIBRATION

35	14.192	1920	1922	1927	rVB3	14641	20427	0.36%	0.025%
36	14.374	1947	1953	1971	rBV	310278	757775	13.20%	0.916%
37	14.580	1978	1988	2002	rVB2	122088	236645	4.12%	0.286%
38	14.763	2014	2019	2025	rVB8	5356	9690	0.17%	0.012%
39	15.021	2059	2063	2067	rBV5	7079	9509	0.17%	0.011%
40	15.133	2076	2082	2089	rBV	3255354	4474795	77.96%	5.407%
41	15.186	2089	2091	2100	rVB	38344	65528	1.14%	0.079%
42	15.280	2101	2107	2118	rBV	648083	994081	17.32%	1.201%
43	15.374	2119	2123	2131	rVB2	36604	58827	1.02%	0.071%
44	15.492	2141	2143	2146	rVB2	12215	10897	0.19%	0.013%
45	15.527	2146	2149	2153	rVB5	7476	9873	0.17%	0.012%
46	15.580	2153	2158	2163	rBV7	12789	21434	0.37%	0.026%
47	15.633	2163	2167	2175	rVB7	22727	38252	0.67%	0.046%
48	15.721	2175	2182	2191	rBV10	6409	19075	0.33%	0.023%
49	15.880	2205	2209	2213	rBV6	11155	17157	0.30%	0.021%
50	15.916	2213	2215	2221	rVB5	12146	18250	0.32%	0.022%
51	16.051	2234	2238	2243	rBV6	7515	13358	0.23%	0.016%
52	16.204	2261	2264	2269	rVB6	5614	8125	0.14%	0.010%
53	16.445	2300	2305	2308	rBV3	15412	23952	0.42%	0.029%
54	16.557	2319	2324	2325	rBV5	12301	16098	0.28%	0.019%
55	16.627	2331	2336	2337	rBV4	6522	8251	0.14%	0.010%
56	16.674	2340	2344	2347	rVV3	20959	30398	0.53%	0.037%
57	16.710	2347	2350	2354	rVB	17356	22400	0.39%	0.027%
58	16.821	2365	2369	2371	rBV5	8031	9917	0.17%	0.012%
59	16.886	2374	2380	2384	rVV	3570054	4941546	86.09%	5.971%
60	16.927	2384	2387	2391	rVV	505877	658852	11.48%	0.796%
61	16.986	2391	2397	2410	rVV	3069006	4559275	79.43%	5.509%
62	17.304	2447	2451	2456	rVB5	10475	18137	0.32%	0.022%
63	17.410	2466	2469	2474	rVB3	16393	23565	0.41%	0.028%
64	17.486	2479	2482	2484	rBV4	6485	8710	0.15%	0.011%
65	17.580	2496	2498	2504	rVB6	8485	11074	0.19%	0.013%
66	17.686	2514	2516	2522	rVB6	8498	10840	0.19%	0.013%
67	17.768	2522	2530	2533	rBV	45364	75449	1.31%	0.091%
68	17.809	2533	2537	2546	rBV2	402708	596600	10.39%	0.721%
69	17.957	2557	2562	2566	rBV2	95557	149574	2.61%	0.181%
70	17.998	2566	2569	2575	rVB3	34254	45449	0.79%	0.055%
71	18.109	2584	2588	2589	rBV4	10905	12640	0.22%	0.015%

Data Path : Z:\SVOASRV\HPCHEM1\BNA\_M\DATA\BM121219\  
 Data File : BM024056.D  
 Acq On : 12 Dec 2019 13:34  
 Operator : JU  
 Sample : K6088-15  
 Misc :  
 ALS Vial : 8 Sample Multiplier: 1

Instrument :  
 BNA\_M  
 ClientSampleId :  
 C0BP3

## Integration Parameters: LSCINT.P

Integrator: RTE  
 Smoothing : OFF  
 Sampling : 1  
 Start Thrs: 0.2  
 Stop Thrs : 0

Filtering: 5  
 Min Area: 0.1 % of largest Peak  
 Max Peaks: 100  
 Peak Location: TOP

If leading or trailing edge < 100 prefer < Baseline drop else tangent >  
 Peak separation: 5

Method : Z:\SVOASRV\HPCHEM1\BNA\_M\METHODS\SOM-EPA-BM112719MA.M  
 Title : SVOA CALIBRATION

72	18.274	2612	2616	2620	rBV2	42530	54857	0.96%	0.066%
73	18.574	2664	2667	2670	rBV5	11839	12294	0.21%	0.015%
74	18.615	2670	2674	2677	rBV6	13095	19773	0.34%	0.024%
75	18.692	2685	2687	2692	rVB4	17626	22417	0.39%	0.027%
76	18.756	2693	2698	2702	rBV8	17758	32500	0.57%	0.039%
77	18.839	2708	2712	2720	rBV4	28352	54529	0.95%	0.066%
78	18.956	2723	2732	2743	rBV	1251525	1813442	31.59%	2.191%
79	19.104	2753	2757	2764	rBV2	180599	269015	4.69%	0.325%
80	19.180	2767	2770	2773	rBV	23261	38891	0.68%	0.047%
81	19.292	2783	2789	2792	rBV	3985389	5576067	97.15%	6.738%
82	19.315	2792	2793	2804	rVB	1097867	1173685	20.45%	1.418%
83	19.509	2823	2826	2828	rBV3	34556	39421	0.69%	0.048%
84	19.539	2828	2831	2834	rVB	73565	83125	1.45%	0.100%
85	19.792	2871	2874	2876	rBV4	34538	46397	0.81%	0.056%
86	19.827	2877	2880	2886	rVB	86591	134190	2.34%	0.162%
87	19.927	2893	2897	2901	rBV2	71560	101607	1.77%	0.123%
88	20.833	3046	3051	3067	rBV3	743970	1329207	23.16%	1.606%
89	21.092	3089	3095	3099	rBV2	4138973	5739792	100.00%	6.936%
90	21.133	3099	3102	3112	rVB	461167	677562	11.80%	0.819%
91	21.274	3123	3126	3130	rBV	239025	244361	4.26%	0.295%
92	21.697	3194	3198	3205	rBV	452106	628529	10.95%	0.760%
93	22.139	3269	3273	3278	rVB	626690	756585	13.18%	0.914%
94	22.615	3348	3354	3369	rVB2	1089944	2354271	41.02%	2.845%
95	23.097	3431	3436	3441	rBV	2892091	4780412	83.29%	5.777%
96	23.150	3441	3445	3452	rVB3	986854	1722816	30.02%	2.082%
97	23.233	3453	3459	3473	rVB	2857133	5610646	97.75%	6.780%
98	23.756	3544	3548	3556	rVB	697756	1246696	21.72%	1.507%

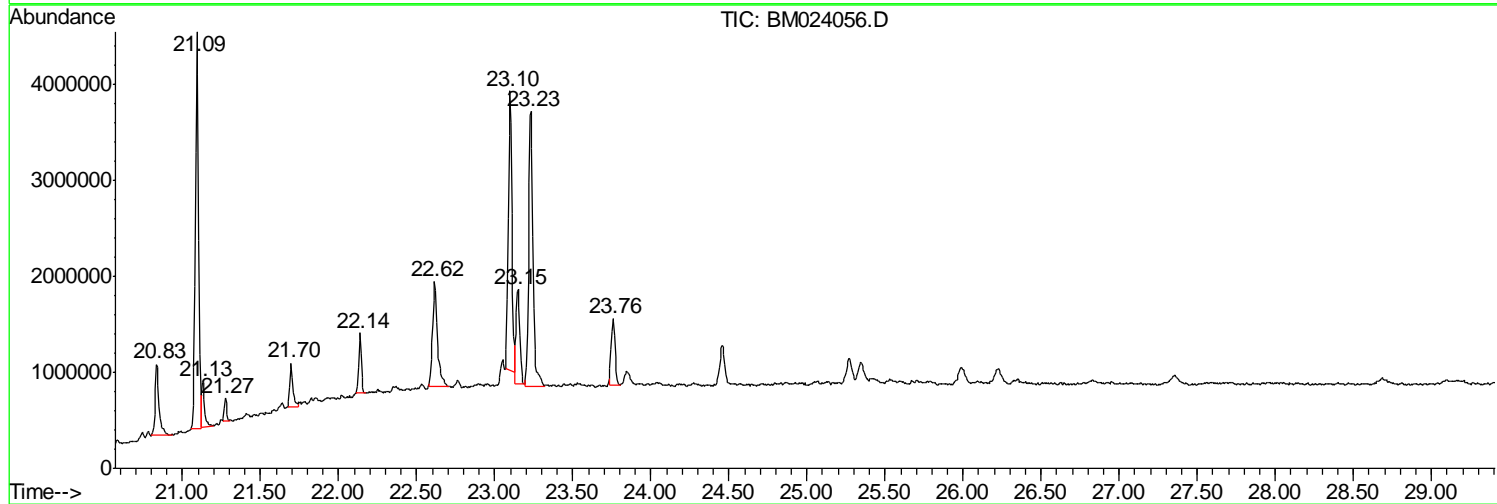
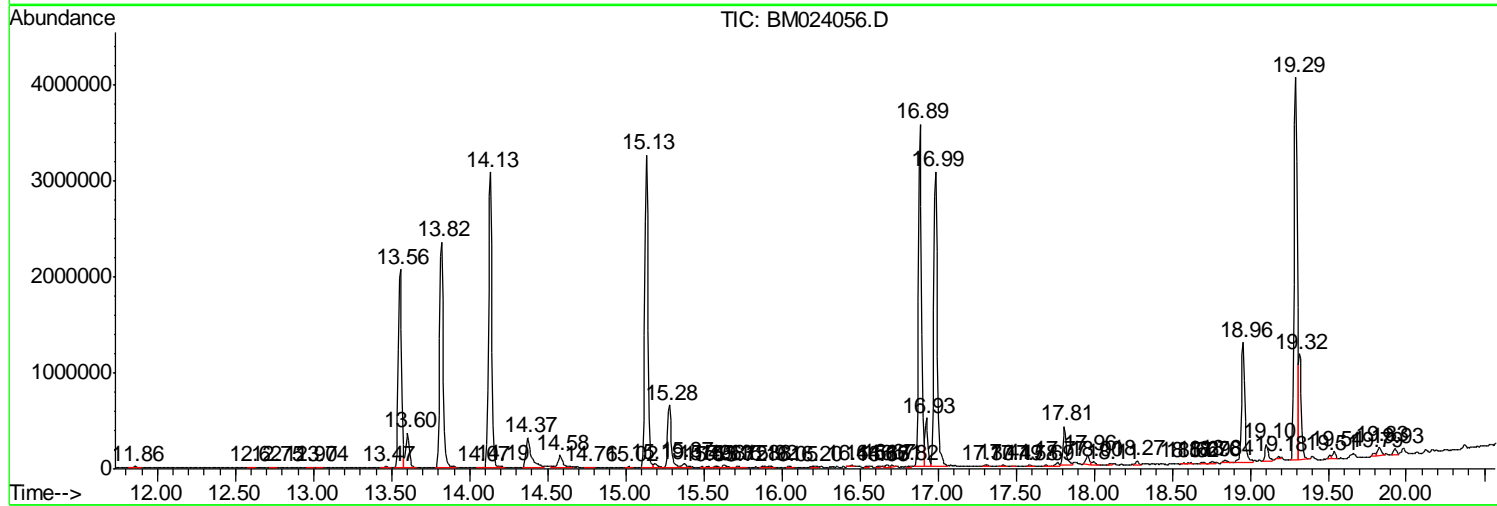
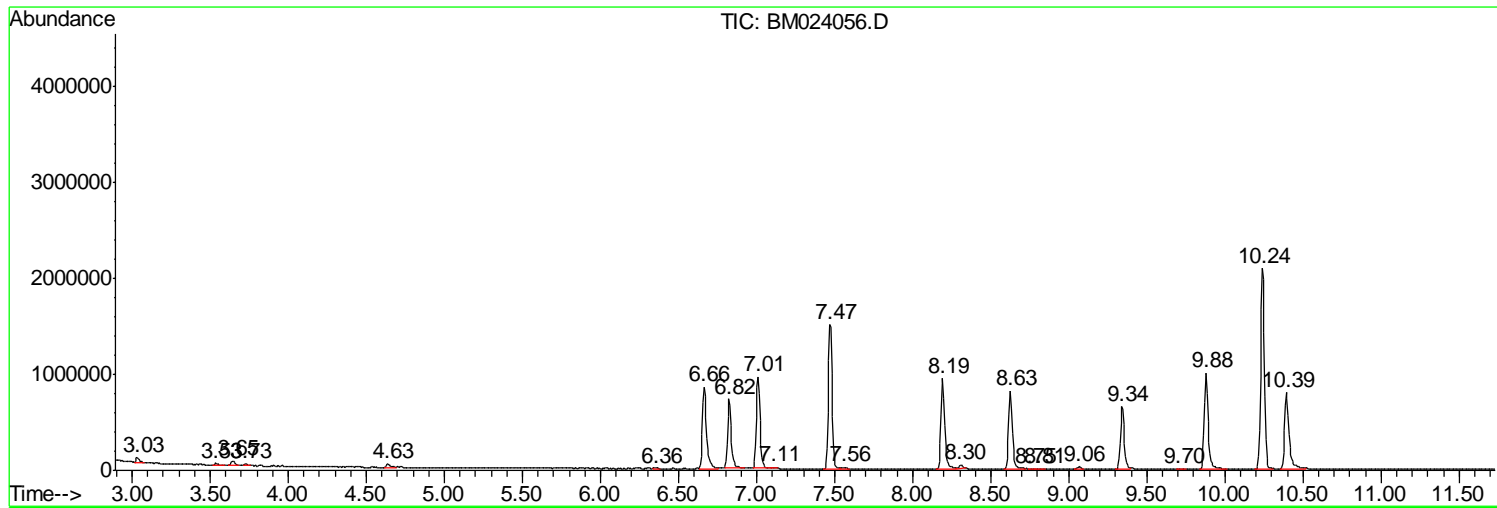
Sum of corrected areas: 82753215

Data Path : Z:\SVOASRV\HPCHEM1\BNA\_M\DATA\BM121219\  
 Data File : BM024056.D  
 Acq On : 12 Dec 2019 13:34  
 Operator : JU  
 Sample : K6088-15  
 Misc :  
 ALS Vial : 8 Sample Multiplier: 1

Instrument :  
 BNA\_M  
 Client Sampled :  
 COBP3

Quant Method : Z:\SVOASRV\HPCHEM1\BNA\_M\METHODS\SOM-EPA-BM112719MA.M  
 Quant Title : SVOA CALIBRATION

TIC Library : C:\DATABASE\NIST11.L  
 TIC Integration Parameters: LSCINT.P



Data Path : Z:\SVOASRV\HPCHEM1\BNA\_M\DATA\BM121219\  
 Data File : BM024056.D  
 Acq On : 12 Dec 2019 13:34  
 Operator : JU  
 Sample : K6088-15  
 Misc :  
 ALS Vial : 8 Sample Multiplier: 1

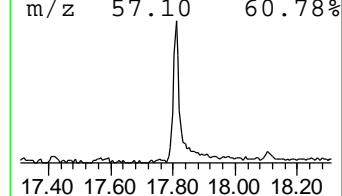
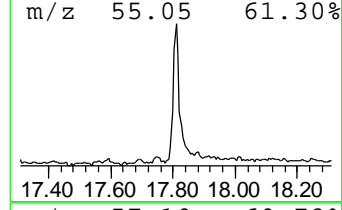
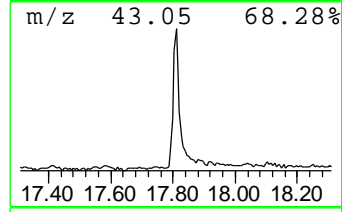
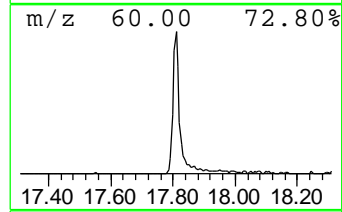
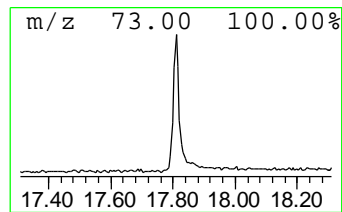
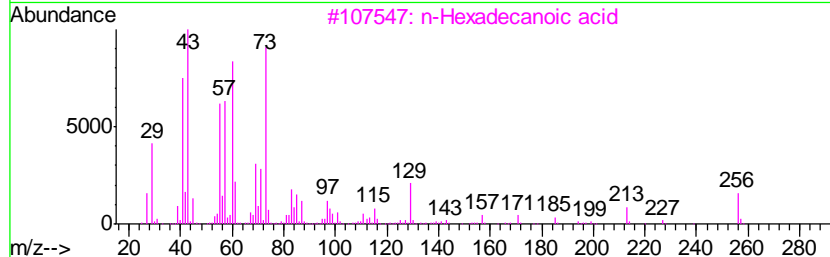
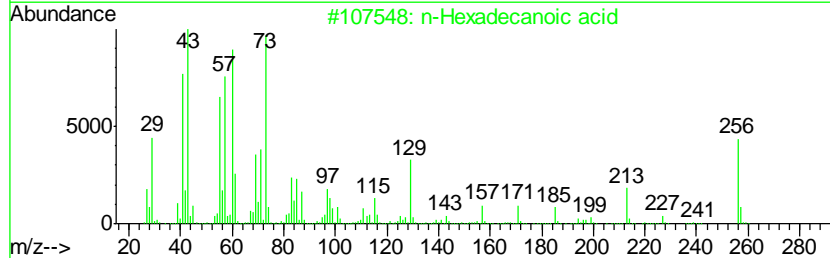
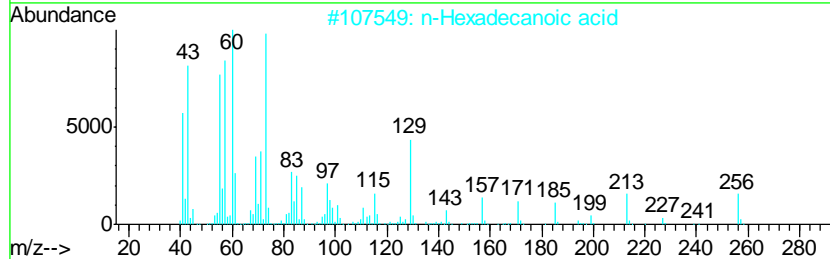
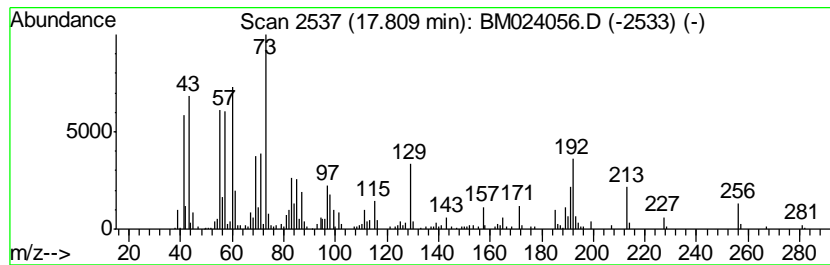
Instrument :  
 BNA\_M  
 ClientSampleId :  
 C0BP3

Quant Method : Z:\SVOASRV\HPCHEM1\BNA\_M\METHODS\SOM-EPA-BM112719MA.M  
 Quant Title : SVOA CALIBRATION

TIC Library : C:\DATABASE\NIST11.L  
 TIC Integration Parameters: LSCINT.P

\*\*\*\*\*  
 Peak Number 1 n-Hexadecanoic acid Concentration Rank 4

R.T.	EstConc	Area	Relative to ISTD	R.T.		
17.81	2.41 ng/ul	596600	Phenanthrene-d10	16.89		
Hit# of	5	Tentative ID	MW	MolForm	CAS#	Qual
1		n-Hexadecanoic acid	256	C16H32O2	000057-10-3	99
2		n-Hexadecanoic acid	256	C16H32O2	000057-10-3	98
3		n-Hexadecanoic acid	256	C16H32O2	000057-10-3	97
4		Pentadecanoic acid	242	C15H30O2	001002-84-2	70
5		Pentadecanoic acid	242	C15H30O2	001002-84-2	53



Data Path : Z:\SVOASRV\HPCHEM1\BNA\_M\DATA\BM121219\  
 Data File : BM024056.D  
 Acq On : 12 Dec 2019 13:34  
 Operator : JU  
 Sample : K6088-15  
 Misc :  
 ALS Vial : 8 Sample Multiplier: 1

Instrument :  
 BNA\_M  
 ClientSampleId :  
 C0BP3

Quant Method : Z:\SVOASRV\HPCHEM1\BNA\_M\METHODS\SOM-EPA-BM112719MA.M  
 Quant Title : SVOA CALIBRATION

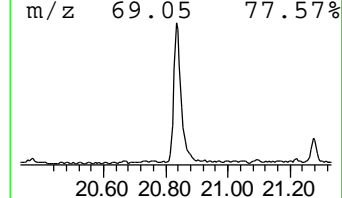
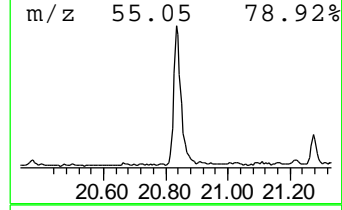
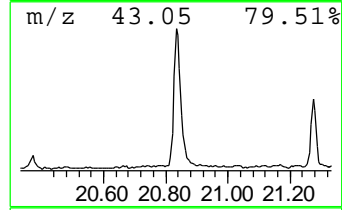
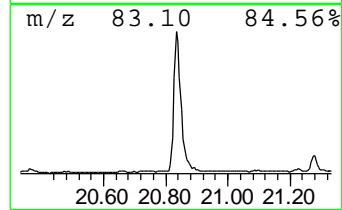
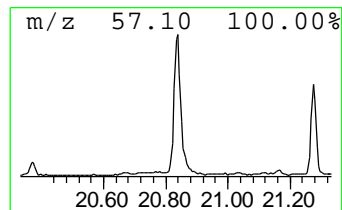
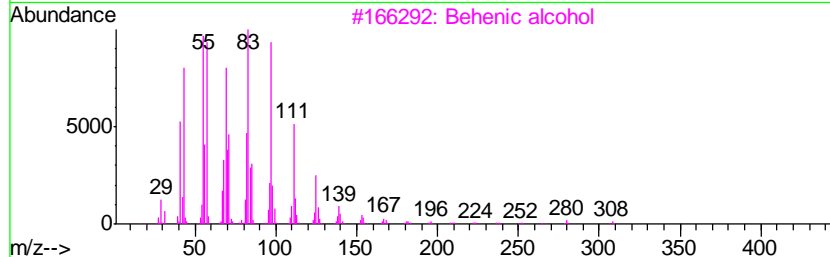
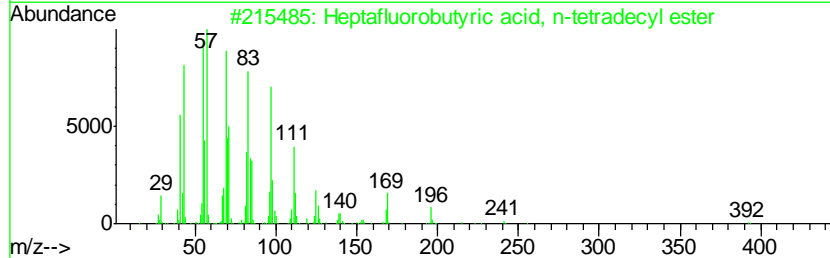
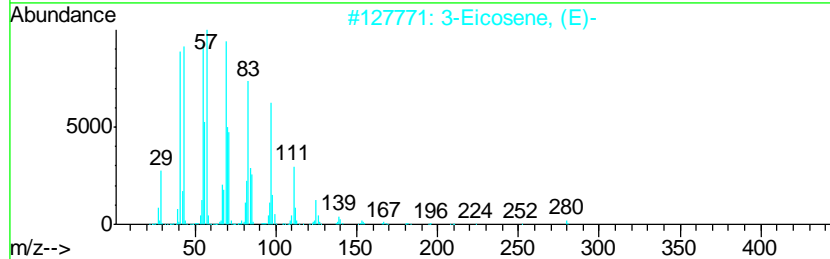
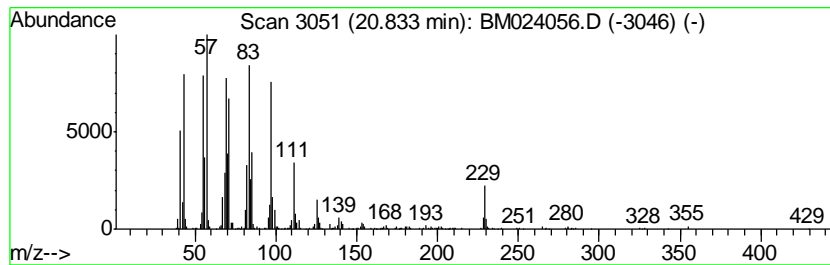
TIC Library : C:\DATABASE\NIST11.L  
 TIC Integration Parameters: LSCINT.P

\*\*\*\*\*  
 Peak Number 2 (DEL) Alkane: Cyclic20.83 Concentration Rank 1

R.T.	EstConc	Area	Relative to ISTD	R.T.
20.83	4.63 ng/ul	1329210	Chrysene-d12	21.09

Hit#	of	Tentative ID	MW	MolForm	CAS#	Qual
1	5	3-Eicosene, (E)-	280	C20H40	074685-33-9	96
2		Heptafluorobutyric acid, n-tetra...	410	C18H29F7O2	007365-36-8	87
3		Behenic alcohol	326	C22H46O	000661-19-8	81
4		n-Nonadecanol-1	284	C19H40O	001454-84-8	81
5		Trifluoroacetoxy hexadecane	338	C18H33F3O2	006222-03-3	76



Data Path : Z:\SVOASRV\HPCHEM1\BNA\_M\DATA\BM121219\  
 Data File : BM024056.D  
 Acq On : 12 Dec 2019 13:34  
 Operator : JU  
 Sample : K6088-15  
 Misc :  
 ALS Vial : 8 Sample Multiplier: 1

Instrument :  
 BNA\_M  
 ClientSampleID :  
 C0BP3

Quant Method : Z:\SVOASRV\HPCHEM1\BNA\_M\METHODS\SOM-EPA-BM112719MA.M  
 Quant Title : SVOA CALIBRATION

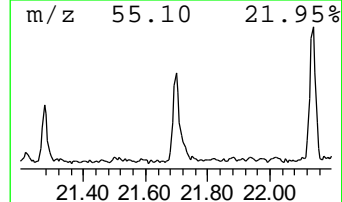
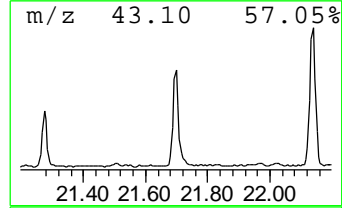
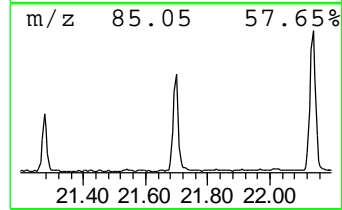
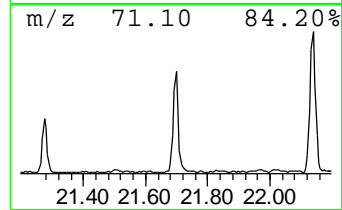
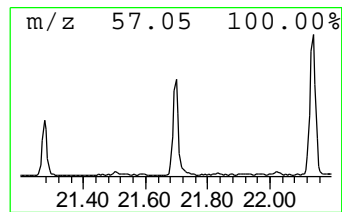
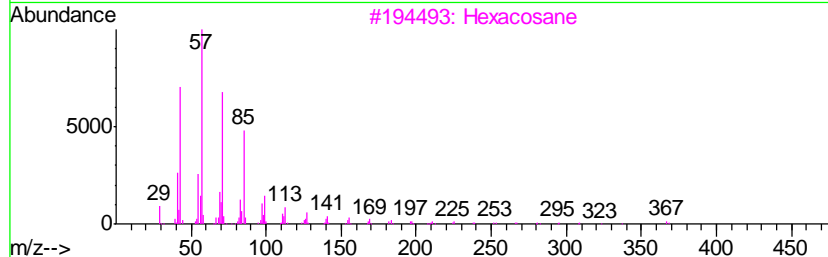
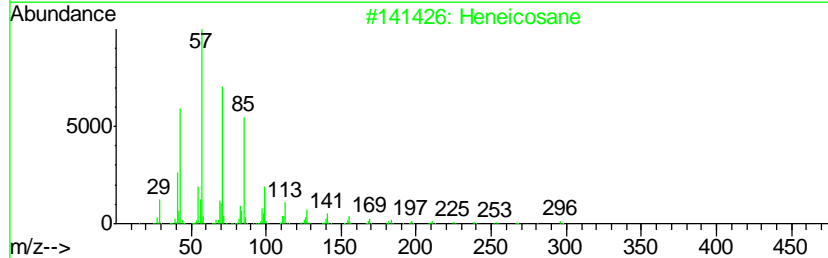
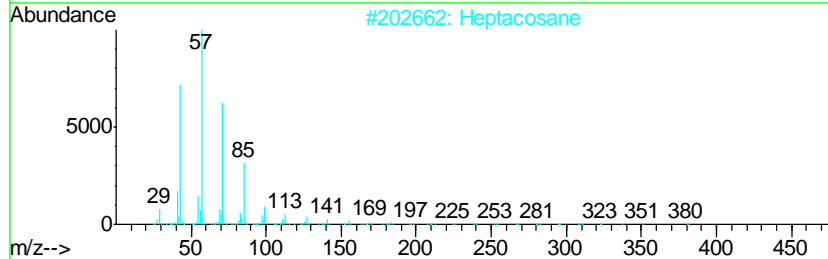
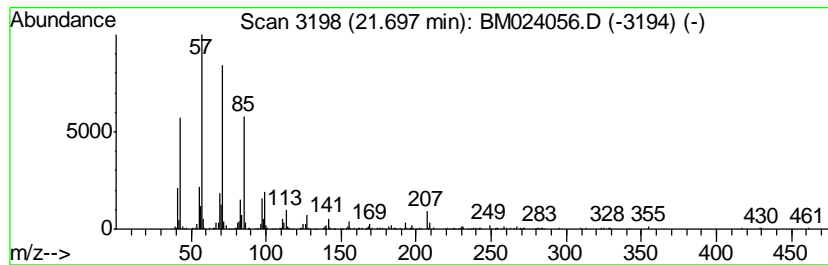
TIC Library : C:\DATABASE\NIST11.L  
 TIC Integration Parameters: LSCINT.P

\*\*\*\*\*  
 Peak Number 3 (DEL) Alkane: Straight-Chai... Concentration Rank 5

R.T.	EstConc	Area	Relative to ISTD	R.T.
21.70	2.19 ng/ul	628529	Chrysene-d12	21.09

Hit#	of	Tentative ID	MW	MolForm	CAS#	Qual
1	5	Heptacosane	380	C27H56	000593-49-7	90
2		Heneicosane	296	C21H44	000629-94-7	87
3		Hexacosane	366	C26H54	000630-01-3	87
4		Heptadecane, 9-octyl-	352	C25H52	007225-64-1	87
5		Hexadecane	226	C16H34	000544-76-3	83



Data Path : Z:\SVOASRV\HPCHEM1\BNA\_M\DATA\BM121219\  
 Data File : BM024056.D  
 Acq On : 12 Dec 2019 13:34  
 Operator : JU  
 Sample : K6088-15  
 Misc :  
 ALS Vial : 8 Sample Multiplier: 1

Instrument :  
 BNA\_M  
 ClientSampleID :  
 C0BP3

Quant Method : Z:\SVOASRV\HPCHEM1\BNA\_M\METHODS\SOM-EPA-BM112719MA.M  
 Quant Title : SVOA CALIBRATION

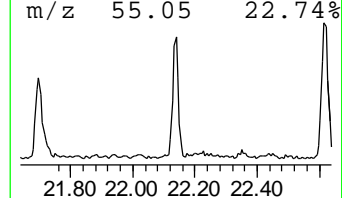
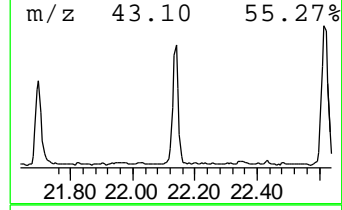
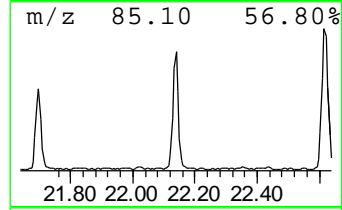
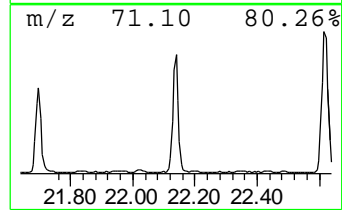
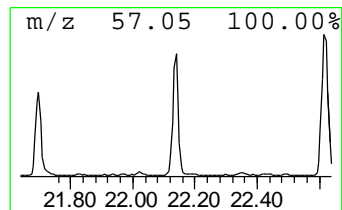
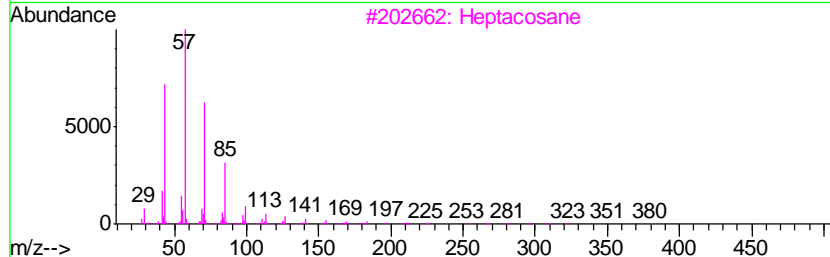
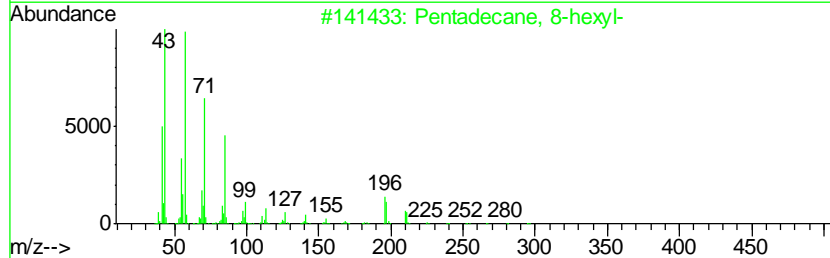
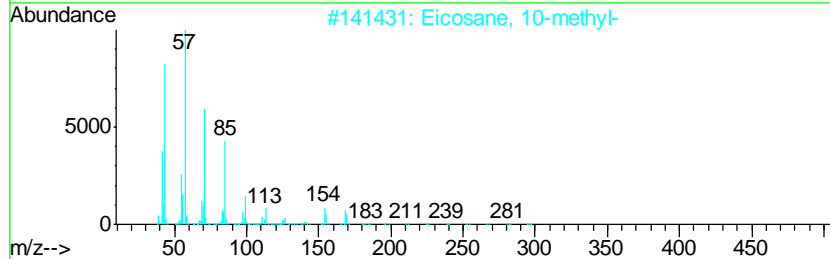
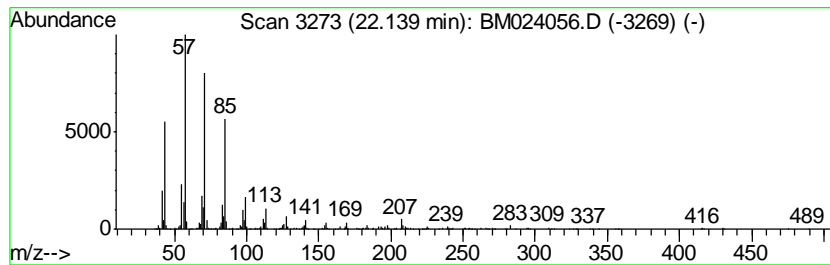
TIC Library : C:\DATABASE\NIST11.L  
 TIC Integration Parameters: LSCINT.P

\*\*\*\*\*  
 Peak Number 4 (DEL) Alkane: Straight-Chai... Concentration Rank 3

R.T.	EstConc	Area	Relative to ISTD	R.T.
22.14	2.64 ng/ul	756585	Chrysene-d12	21.09

Hit#	of	Tentative ID	MW	MolForm	CAS#	Qual
1	5	Eicosane, 10-methyl-	296	C21H44	054833-23-7	94
2		Pentadecane, 8-hexyl-	296	C21H44	013475-75-7	94
3		Heptacosane	380	C27H56	000593-49-7	91
4		Heneicosane	296	C21H44	000629-94-7	91
5		Tetracosane	338	C24H50	000646-31-1	91





Data Path : Z:\SVOASRV\HPCHEM1\BNA\_M\DATA\BM121219\  
 Data File : BM024056.D  
 Acq On : 12 Dec 2019 13:34  
 Operator : JU  
 Sample : K6088-15  
 Misc :  
 ALS Vial : 8 Sample Multiplier: 1

Instrument :  
 BNA\_M  
 ClientSampleID :  
 C0BP3

Quant Method : Z:\SVOASRV\HPCHEM1\BNA\_M\METHODS\SOM-EPA-BM112719MA.M  
 Quant Title : SVOA CALIBRATION

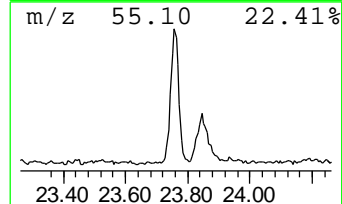
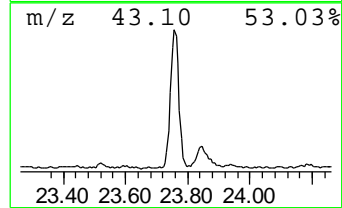
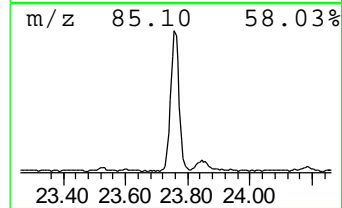
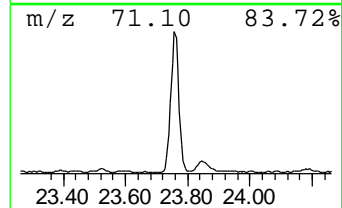
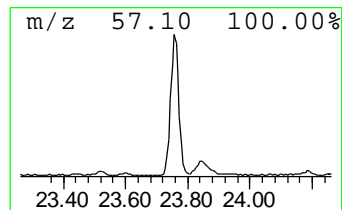
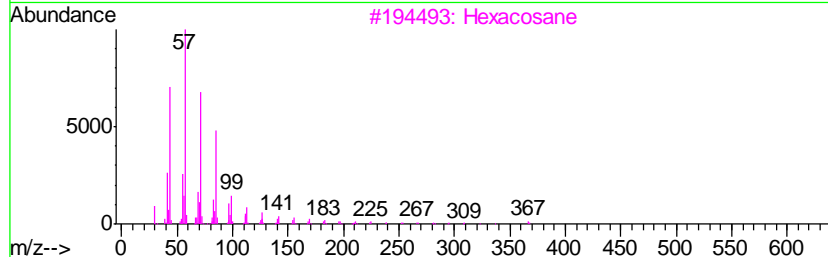
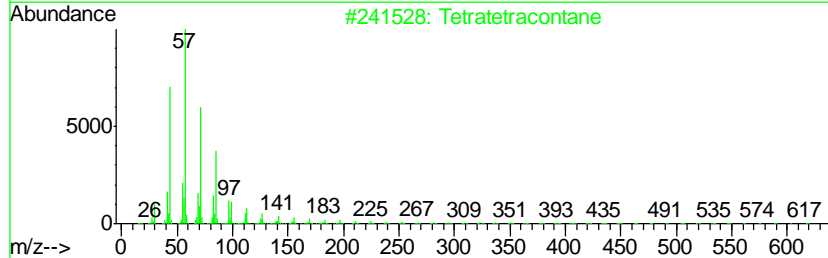
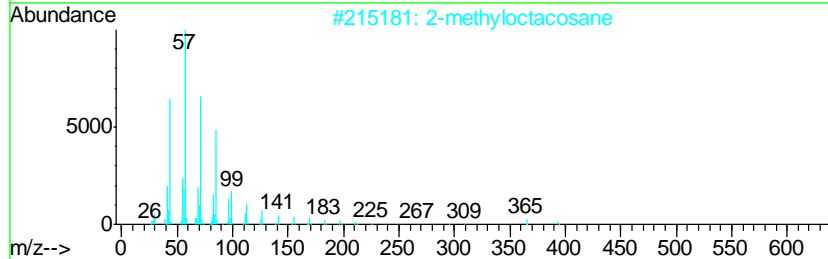
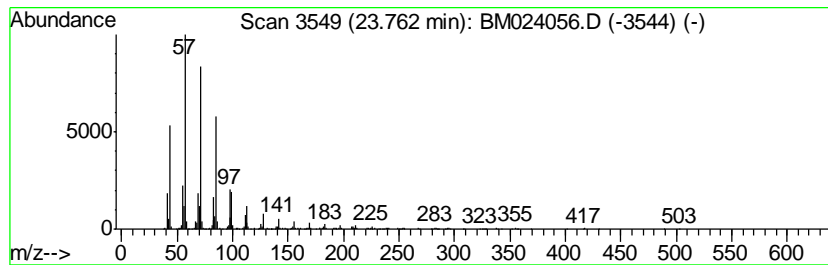
TIC Library : C:\DATABASE\NIST11.L  
 TIC Integration Parameters: LSCINT.P

\*\*\*\*\*  
 Peak Number 5 (DEL) Alkane: Straight-Chai... Concentration Rank 2

R.T.	EstConc	Area	Relative to ISTD	R.T.
23.76	4.44 ng/ul	1246700	Perylene-d12	23.23

Hit#	of	Tentative ID	MW	MolForm	CAS#	Qual
1	5	2-methyloctacosane	408	C29H60	1000376-72-8	91
2		Tetratetracontane	619	C44H90	007098-22-8	91
3		Hexacosane	366	C26H54	000630-01-3	91
4		Octacosane	394	C28H58	000630-02-4	91
5		Heneicosane, 11-(1-ethylpropyl)-	366	C26H54	055282-11-6	91



Data Path : Z:\SVOASRV\HPCHEM1\BNA\_M\DATA\BM121219\  
 Data File : BM024056.D  
 Acq On : 12 Dec 2019 13:34  
 Operator : JU  
 Sample : K6088-15  
 Misc :  
 ALS Vial : 8 Sample Multiplier: 1

Instrument :  
 BNA\_M  
 ClientSampleId :  
 C0BP3

Quant Method : Z:\SVOASRV\HPCHEM1\BNA\_M\METHODS\SOM-EPA-BM112719MA.M  
 Quant Title : SVOA CALIBRATION

TIC Library : C:\DATABASE\NIST11.L  
 TIC Integration Parameters: LSCINT.P

TIC Top Hit name	RT	EstConc	Units	Response	--Internal Standard--			
					#	RT	Resp	Conc
n-Hexadecanoic acid	17.81	2.4	ng/ul	596600	4	16.89	4941550	20.0
(DEL) Alkane: Cyc...	20.83	4.6	ng/ul	1329210	5	21.09	5739790	20.0
(DEL) Alkane: Str...	21.70	2.2	ng/ul	628529	5	21.09	5739790	20.0
(DEL) Alkane: Str...	22.14	2.6	ng/ul	756585	5	21.09	5739790	20.0
(DEL) Alkane: Str...	23.76	4.4	ng/ul	1246700	6	23.23	5610650	20.0