

Data Path : Z:\SVOASRV\HPCHEM1\BNA_M\DATA\BM121219\
 Data File : BM024082.D
 Acq On : 13 Dec 2019 09:08
 Operator : JU
 Sample : K6132-01
 Misc :
 ALS Vial : 4 Sample Multiplier: 1

Instrument :
 BNA_M
 ClientSampleId :
 BFQQ9

Integration Parameters: LSCINT.P

Integrator: RTE
 Smoothing : OFF Filtering: 5
 Sampling : 1 Min Area: 0.1 % of largest Peak
 Start Thrs: 0.2 Max Peaks: 100
 Stop Thrs : 0 Peak Location: TOP

If leading or trailing edge < 100 prefer < Baseline drop else tangent >
 Peak separation: 5

Method : Z:\SVOASRV\HPCHEM1\BNA_M\METHODS\SOM-EPA-BM112719MA.M
 Title : SVOA CALIBRATION

Signal : TIC

| peak # | R.T. min | first scan | max scan | last scan | PK TY | peak height | corr. area | corr. % max. | % of total |
|--------|----------|------------|----------|-----------|-------|-------------|------------|--------------|------------|
| 1 | 3.028 | 22 | 24 | 35 | rVB | 102210 | 149307 | 1.74% | 0.141% |
| 2 | 3.646 | 127 | 129 | 137 | rVB6 | 13837 | 31796 | 0.37% | 0.030% |
| 3 | 3.728 | 140 | 143 | 147 | rVB | 20844 | 25175 | 0.29% | 0.024% |
| 4 | 4.099 | 203 | 206 | 212 | rVB5 | 14114 | 22701 | 0.27% | 0.022% |
| 5 | 5.504 | 438 | 445 | 453 | rBV8 | 14000 | 33759 | 0.39% | 0.032% |
| 6 | 5.569 | 453 | 456 | 459 | rBV5 | 6419 | 11470 | 0.13% | 0.011% |
| 7 | 6.251 | 567 | 572 | 577 | rVB7 | 5878 | 12355 | 0.14% | 0.012% |
| 8 | 6.528 | 614 | 619 | 630 | rVB4 | 28211 | 67470 | 0.79% | 0.064% |
| 9 | 6.663 | 634 | 642 | 654 | rVV2 | 518234 | 987983 | 11.53% | 0.936% |
| 10 | 6.822 | 663 | 669 | 684 | rBV | 1454417 | 2419757 | 28.25% | 2.293% |
| 11 | 7.004 | 693 | 700 | 711 | rBV | 1696885 | 2727923 | 31.84% | 2.585% |
| 12 | 7.469 | 771 | 779 | 789 | rBV | 1616904 | 2580141 | 30.12% | 2.445% |
| 13 | 7.581 | 796 | 798 | 805 | rVB6 | 12410 | 15820 | 0.18% | 0.015% |
| 14 | 7.834 | 835 | 841 | 843 | rBV7 | 7898 | 13763 | 0.16% | 0.013% |
| 15 | 8.187 | 895 | 901 | 913 | rBV | 1382453 | 2229764 | 26.03% | 2.113% |
| 16 | 8.498 | 947 | 954 | 960 | rBV6 | 28389 | 54139 | 0.63% | 0.051% |
| 17 | 8.622 | 968 | 975 | 987 | rBV | 1813623 | 2969106 | 34.66% | 2.814% |
| 18 | 8.792 | 998 | 1004 | 1006 | rBV6 | 9988 | 19083 | 0.22% | 0.018% |
| 19 | 8.892 | 1013 | 1021 | 1026 | rBV | 179323 | 331495 | 3.87% | 0.314% |
| 20 | 8.975 | 1027 | 1035 | 1042 | rVV | 475151 | 823171 | 9.61% | 0.780% |
| 21 | 9.063 | 1046 | 1050 | 1052 | rVV2 | 39240 | 59485 | 0.69% | 0.056% |
| 22 | 9.087 | 1052 | 1054 | 1062 | rVB3 | 44604 | 71139 | 0.83% | 0.067% |
| 23 | 9.198 | 1068 | 1073 | 1077 | rBV2 | 44713 | 70533 | 0.82% | 0.067% |
| 24 | 9.239 | 1077 | 1080 | 1084 | rVV5 | 23339 | 30805 | 0.36% | 0.029% |
| 25 | 9.275 | 1084 | 1086 | 1090 | rVV5 | 10096 | 13049 | 0.15% | 0.012% |
| 26 | 9.334 | 1090 | 1096 | 1111 | rVV | 1471485 | 2484998 | 29.01% | 2.355% |
| 27 | 9.439 | 1111 | 1114 | 1118 | rVV6 | 9237 | 9857 | 0.12% | 0.009% |
| 28 | 9.551 | 1127 | 1133 | 1137 | rBV8 | 9433 | 19324 | 0.23% | 0.018% |
| 29 | 9.622 | 1141 | 1145 | 1148 | rBV5 | 14208 | 23465 | 0.27% | 0.022% |
| 30 | 9.675 | 1148 | 1154 | 1155 | rVV6 | 17635 | 32496 | 0.38% | 0.031% |
| 31 | 9.698 | 1155 | 1158 | 1163 | rVV2 | 36351 | 67508 | 0.79% | 0.064% |
| 32 | 9.769 | 1163 | 1170 | 1174 | rVV | 149542 | 295086 | 3.44% | 0.280% |
| 33 | 9.816 | 1174 | 1178 | 1182 | rVV | 202716 | 318162 | 3.71% | 0.302% |
| 34 | 9.875 | 1182 | 1188 | 1198 | rVV | 2218721 | 3915637 | 45.71% | 3.711% |

Data Path : Z:\SVOASRV\HPCHEM1\BNA_M\DATA\BM121219\
 Data File : BM024082.D
 Acq On : 13 Dec 2019 09:08
 Operator : JU
 Sample : K6132-01
 Misc :
 ALS Vial : 4 Sample Multiplier: 1

Instrument :
 BNA_M
 ClientSampleId :
 BFQQ9

Integration Parameters: LSCINT.P

Integrator: RTE
 Smoothing : OFF
 Sampling : 1
 Start Thrs: 0.2
 Stop Thrs : 0

Filtering: 5
 Min Area: 0.1 % of largest Peak
 Max Peaks: 100
 Peak Location: TOP

If leading or trailing edge < 100 prefer < Baseline drop else tangent >
 Peak separation: 5

Method : Z:\SVOASRV\HPCHEM1\BNA_M\METHODS\SOM-EPA-BM112719MA.M
 Title : SVOA CALIBRATION

| | | | | | | | | | |
|----|--------|------|------|------|-------|---------|---------|--------|--------|
| 35 | 9.963 | 1199 | 1203 | 1212 | rVV2 | 85132 | 201957 | 2.36% | 0.191% |
| 36 | 10.039 | 1214 | 1216 | 1221 | rVB5 | 23382 | 28597 | 0.33% | 0.027% |
| 37 | 10.104 | 1221 | 1227 | 1235 | rBV3 | 75760 | 151941 | 1.77% | 0.144% |
| 38 | 10.239 | 1242 | 1250 | 1262 | rBV | 2210207 | 3676562 | 42.92% | 3.484% |
| 39 | 10.398 | 1267 | 1277 | 1286 | rBV3 | 65978 | 174103 | 2.03% | 0.165% |
| 40 | 10.504 | 1289 | 1295 | 1297 | rBV7 | 11498 | 20773 | 0.24% | 0.020% |
| 41 | 10.534 | 1297 | 1300 | 1305 | rVB7 | 12198 | 17947 | 0.21% | 0.017% |
| 42 | 10.616 | 1311 | 1314 | 1318 | rBV6 | 7235 | 11026 | 0.13% | 0.010% |
| 43 | 10.745 | 1334 | 1336 | 1339 | rBV4 | 9436 | 11402 | 0.13% | 0.011% |
| 44 | 10.822 | 1343 | 1349 | 1355 | rVV5 | 25956 | 59404 | 0.69% | 0.056% |
| 45 | 10.975 | 1369 | 1375 | 1381 | rBV2 | 40620 | 81030 | 0.95% | 0.077% |
| 46 | 11.098 | 1386 | 1396 | 1403 | rBV7 | 74434 | 184322 | 2.15% | 0.175% |
| 47 | 11.163 | 1404 | 1407 | 1412 | rVB7 | 11387 | 18886 | 0.22% | 0.018% |
| 48 | 11.222 | 1412 | 1417 | 1423 | rBV7 | 22611 | 52293 | 0.61% | 0.050% |
| 49 | 11.322 | 1431 | 1434 | 1435 | rBV3 | 12123 | 13956 | 0.16% | 0.013% |
| 50 | 11.463 | 1452 | 1458 | 1465 | rVV6 | 34511 | 90849 | 1.06% | 0.086% |
| 51 | 11.533 | 1467 | 1470 | 1475 | rVB7 | 11418 | 21643 | 0.25% | 0.021% |
| 52 | 11.663 | 1489 | 1492 | 1495 | rBV5 | 7764 | 12783 | 0.15% | 0.012% |
| 53 | 11.786 | 1508 | 1513 | 1514 | rBV5 | 11667 | 17656 | 0.21% | 0.017% |
| 54 | 11.845 | 1519 | 1523 | 1527 | rVB2 | 41619 | 68199 | 0.80% | 0.065% |
| 55 | 11.892 | 1527 | 1531 | 1533 | rBV5 | 19152 | 31179 | 0.36% | 0.030% |
| 56 | 11.957 | 1539 | 1542 | 1544 | rBV4 | 16113 | 19955 | 0.23% | 0.019% |
| 57 | 12.051 | 1555 | 1558 | 1561 | rBV4 | 19532 | 29422 | 0.34% | 0.028% |
| 58 | 12.145 | 1569 | 1574 | 1580 | rBV10 | 22706 | 45101 | 0.53% | 0.043% |
| 59 | 12.222 | 1584 | 1587 | 1592 | rVB6 | 20207 | 26853 | 0.31% | 0.025% |
| 60 | 12.286 | 1595 | 1598 | 1601 | rBV4 | 12103 | 18073 | 0.21% | 0.017% |
| 61 | 12.433 | 1619 | 1623 | 1630 | rBV10 | 21484 | 42465 | 0.50% | 0.040% |
| 62 | 12.563 | 1642 | 1645 | 1648 | rBV4 | 12819 | 18617 | 0.22% | 0.018% |
| 63 | 12.604 | 1648 | 1652 | 1656 | rBV5 | 30042 | 53973 | 0.63% | 0.051% |
| 64 | 12.739 | 1672 | 1675 | 1679 | rVB5 | 28091 | 40582 | 0.47% | 0.038% |
| 65 | 12.786 | 1679 | 1683 | 1687 | rBV6 | 16024 | 26958 | 0.31% | 0.026% |
| 66 | 12.857 | 1691 | 1695 | 1700 | rBV7 | 21272 | 36170 | 0.42% | 0.034% |
| 67 | 13.151 | 1742 | 1745 | 1755 | rVB7 | 26681 | 57124 | 0.67% | 0.054% |
| 68 | 13.239 | 1756 | 1760 | 1761 | rBV4 | 14575 | 15945 | 0.19% | 0.015% |
| 69 | 13.369 | 1777 | 1782 | 1784 | rBV4 | 28023 | 46159 | 0.54% | 0.044% |
| 70 | 13.498 | 1802 | 1804 | 1807 | rBV3 | 24038 | 25461 | 0.30% | 0.024% |
| 71 | 13.551 | 1807 | 1813 | 1818 | rVV | 4157468 | 5583729 | 65.18% | 5.291% |

Data Path : Z:\SVOASRV\HPCHEM1\BNA_M\DATA\BM121219\
 Data File : BM024082.D
 Acq On : 13 Dec 2019 09:08
 Operator : JU
 Sample : K6132-01
 Misc :
 ALS Vial : 4 Sample Multiplier: 1

Instrument :
 BNA_M
 ClientSampleId :
 BFQQ9

Integration Parameters: LSCINT.P

Integrator: RTE
 Smoothing : OFF
 Sampling : 1
 Start Thrs: 0.2
 Stop Thrs : 0

Filtering: 5
 Min Area: 0.1 % of largest Peak
 Max Peaks: 100
 Peak Location: TOP

If leading or trailing edge < 100 prefer < Baseline drop else tangent >
 Peak separation: 5

Method : Z:\SVOASRV\HPCHEM1\BNA_M\METHODS\SOM-EPA-BM112719MA.M
 Title : SVOA CALIBRATION

| | | | | | | | | | |
|-----|--------|------|------|------|------|---------|---------|---------|--------|
| 72 | 13.598 | 1818 | 1821 | 1827 | rVB | 317567 | 411132 | 4.80% | 0.390% |
| 73 | 13.663 | 1828 | 1832 | 1833 | rBV4 | 31579 | 44262 | 0.52% | 0.042% |
| 74 | 13.816 | 1852 | 1858 | 1873 | rBV | 4777221 | 7142401 | 83.38% | 6.768% |
| 75 | 13.957 | 1878 | 1882 | 1889 | rVB | 71353 | 119763 | 1.40% | 0.113% |
| 76 | 14.127 | 1905 | 1911 | 1919 | rBV | 3289503 | 4775500 | 55.75% | 4.525% |
| 77 | 14.374 | 1949 | 1953 | 1965 | rBV | 242482 | 546882 | 6.38% | 0.518% |
| 78 | 14.533 | 1976 | 1980 | 1987 | rBV5 | 90905 | 177717 | 2.07% | 0.168% |
| 79 | 14.910 | 2041 | 2044 | 2048 | rVB3 | 85734 | 103025 | 1.20% | 0.098% |
| 80 | 15.133 | 2075 | 2082 | 2088 | rBV | 5908570 | 8566332 | 100.00% | 8.118% |
| 81 | 15.274 | 2100 | 2106 | 2118 | rBV | 1810525 | 2606902 | 30.43% | 2.470% |
| 82 | 16.886 | 2374 | 2380 | 2390 | rBV | 3478232 | 5107942 | 59.63% | 4.840% |
| 83 | 16.980 | 2390 | 2396 | 2408 | rVB | 5811435 | 8362450 | 97.62% | 7.925% |
| 84 | 17.810 | 2532 | 2537 | 2544 | rBV | 1405423 | 2005679 | 23.41% | 1.901% |
| 85 | 17.874 | 2545 | 2548 | 2558 | rVB | 176546 | 268122 | 3.13% | 0.254% |
| 86 | 18.956 | 2729 | 2732 | 2734 | rBV2 | 126016 | 151872 | 1.77% | 0.144% |
| 87 | 19.104 | 2753 | 2757 | 2765 | rBV | 474148 | 661787 | 7.73% | 0.627% |
| 88 | 19.292 | 2783 | 2789 | 2794 | rBV | 5844691 | 7943453 | 92.73% | 7.528% |
| 89 | 19.874 | 2885 | 2888 | 2892 | rVB | 183100 | 192571 | 2.25% | 0.182% |
| 90 | 20.374 | 2970 | 2973 | 2976 | rVB | 305207 | 329918 | 3.85% | 0.313% |
| 91 | 20.833 | 3048 | 3051 | 3058 | rBV | 1858173 | 2128706 | 24.85% | 2.017% |
| 92 | 21.092 | 3091 | 3095 | 3101 | rBV | 3342403 | 4189500 | 48.91% | 3.970% |
| 93 | 21.274 | 3123 | 3126 | 3131 | rVB | 597848 | 594086 | 6.94% | 0.563% |
| 94 | 21.692 | 3194 | 3197 | 3208 | rBV | 549582 | 764372 | 8.92% | 0.724% |
| 95 | 22.139 | 3269 | 3273 | 3278 | rVB | 526440 | 675627 | 7.89% | 0.640% |
| 96 | 22.250 | 3290 | 3292 | 3301 | rVB | 479777 | 604400 | 7.06% | 0.573% |
| 97 | 22.615 | 3351 | 3354 | 3359 | rVB | 491759 | 642296 | 7.50% | 0.609% |
| 98 | 23.097 | 3430 | 3436 | 3442 | rBV | 4218695 | 7329230 | 85.56% | 6.945% |
| 99 | 23.150 | 3442 | 3445 | 3452 | rVV | 502513 | 703249 | 8.21% | 0.666% |
| 100 | 23.233 | 3453 | 3459 | 3467 | rVB | 2515681 | 4405387 | 51.43% | 4.175% |

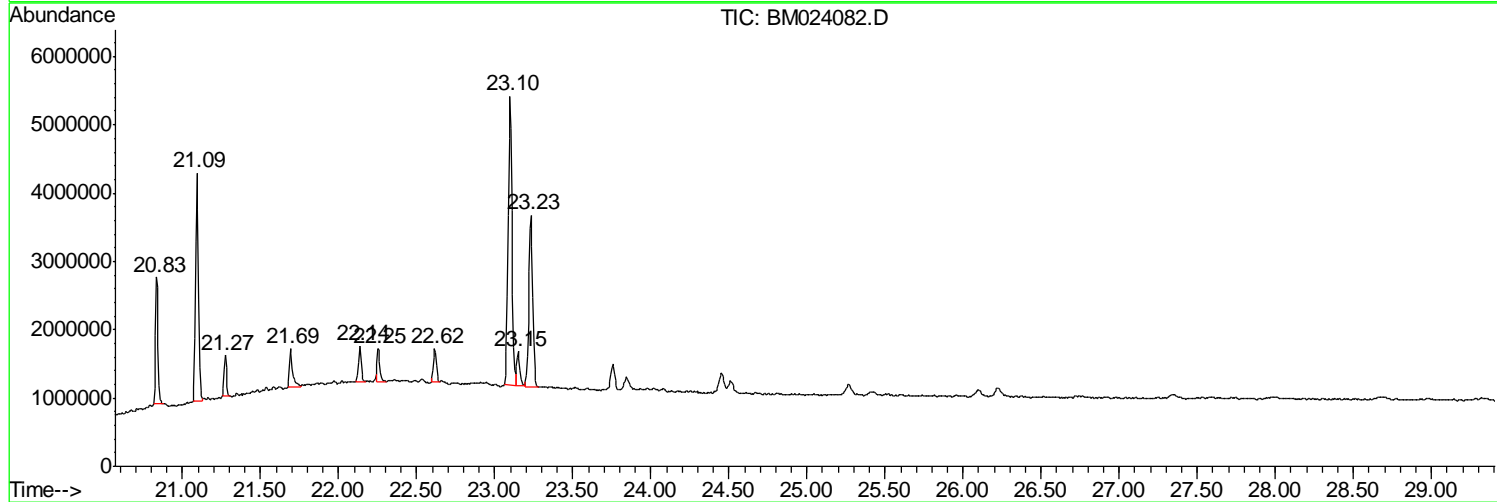
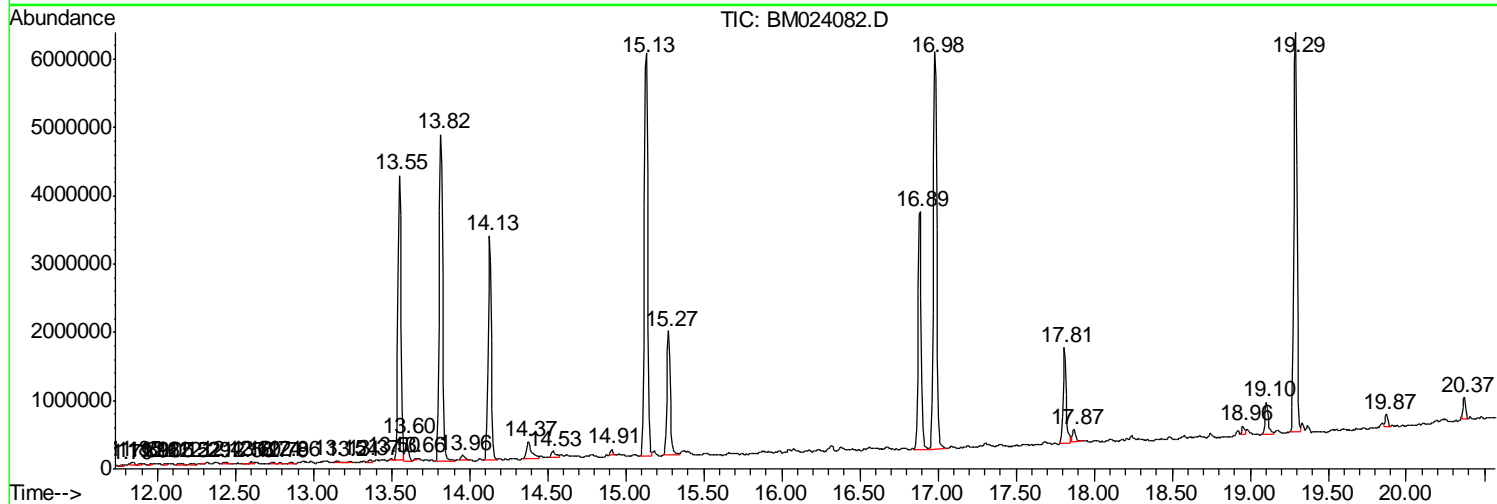
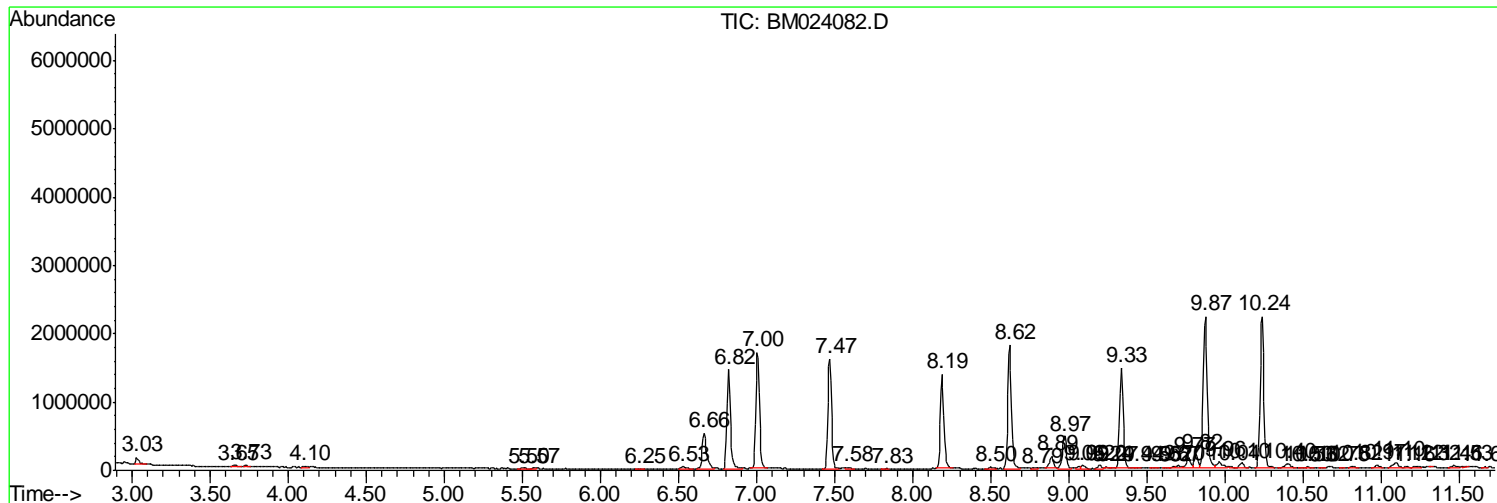
Sum of corrected areas: 105525380

Data Path : Z:\SVOASRV\HPCHEM1\BNA_M\DATA\BM121219\
 Data File : BM024082.D
 Acq On : 13 Dec 2019 09:08
 Operator : JU
 Sample : K6132-01
 Misc :
 ALS Vial : 4 Sample Multiplier: 1

Instrument :
 BNA_M
 ClientSampleId :
 BFQQ9

Quant Method : Z:\SVOASRV\HPCHEM1\BNA_M\METHODS\SOM-EPA-BM112719MA.M
 Quant Title : SVOA CALIBRATION

TIC Library : C:\DATABASE\NIST11.L
 TIC Integration Parameters: LSCINT.P



Data Path : Z:\SVOASRV\HPCHEM1\BNA_M\DATA\BM121219\
 Data File : BM024082.D
 Acq On : 13 Dec 2019 09:08
 Operator : JU
 Sample : K6132-01
 Misc :
 ALS Vial : 4 Sample Multiplier: 1

Instrument :
 BNA_M
 ClientSampleId :
 BFQQ9

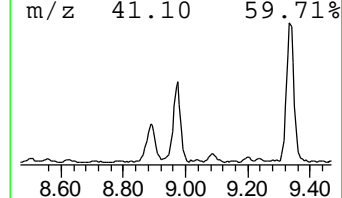
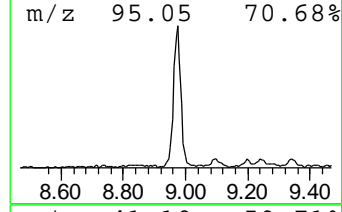
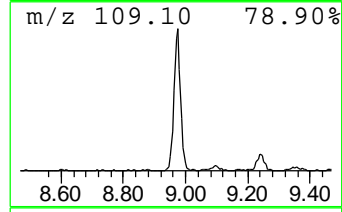
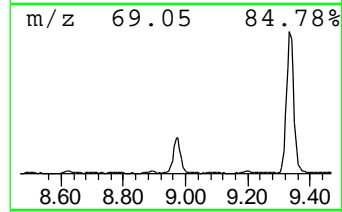
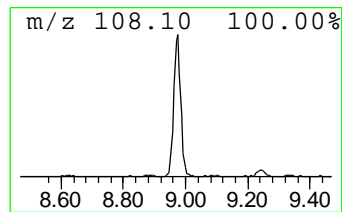
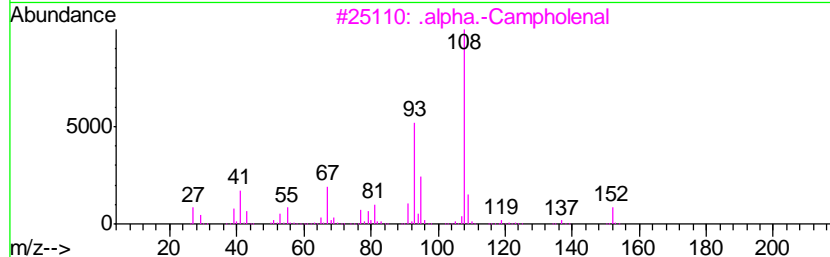
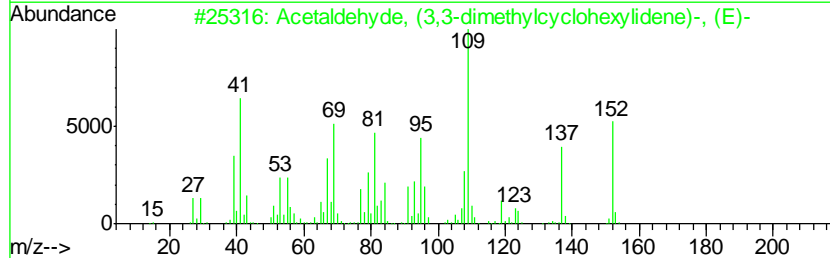
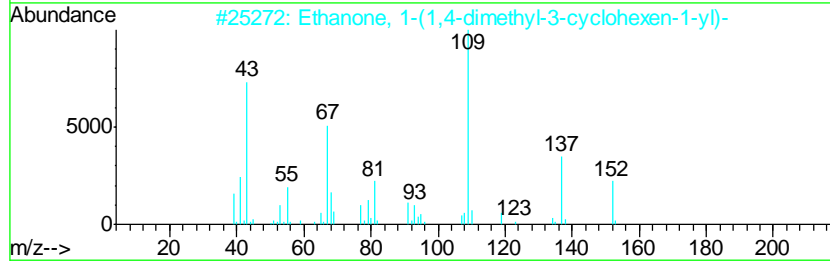
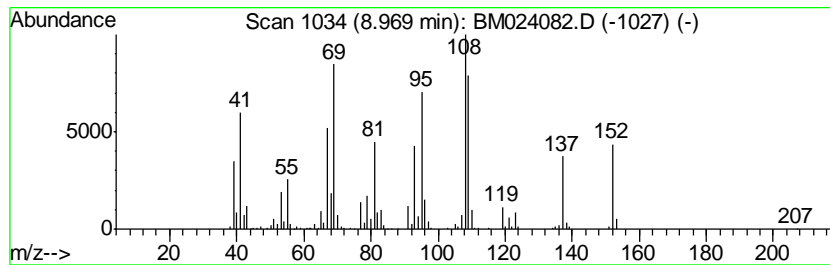
Quant Method : Z:\SVOASRV\HPCHEM1\BNA_M\METHODS\SOM-EPA-BM112719MA.M
 Quant Title : SVOA CALIBRATION

TIC Library : C:\DATABASE\NIST11.L
 TIC Integration Parameters: LSCINT.P

 Peak Number 1 Ethanone, 1-(1,4-dimethyl-3... Concentration Rank 3

| R.T. | EstConc | Area | Relative to ISTD | R.T. |
|------|------------|--------|------------------|-------|
| 8.97 | 4.48 ng/ul | 823171 | Naphthalene-d8 | 10.24 |

| Hit# | of | Tentative ID | MW | MolForm | CAS# | Qual |
|------|----|-------------------------------------|-----|---------|-------------|------|
| 1 | 5 | Ethanone, 1-(1,4-dimethyl-3-cycl... | 152 | C10H16O | 043219-68-7 | 50 |
| 2 | | Acetaldehyde, (3,3-dimethylcyclo... | 152 | C10H16O | 026532-25-2 | 46 |
| 3 | | .alpha.-Campholenal | 152 | C10H16O | 004501-58-0 | 43 |
| 4 | | Ethanone, 1-(1,4-dimethyl-3-cycl... | 152 | C10H16O | 043219-68-7 | 35 |
| 5 | | 1-(2-Propenyl)cyclopentene | 108 | C8H12 | 037689-19-3 | 30 |



Data Path : Z:\SVOASRV\HPCHEM1\BNA_M\DATA\BM121219\
 Data File : BM024082.D
 Acq On : 13 Dec 2019 09:08
 Operator : JU
 Sample : K6132-01
 Misc :
 ALS Vial : 4 Sample Multiplier: 1

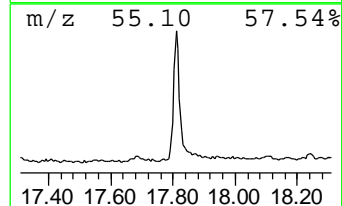
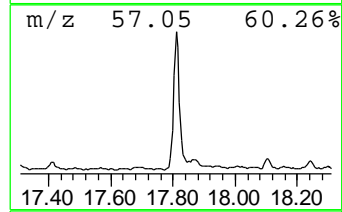
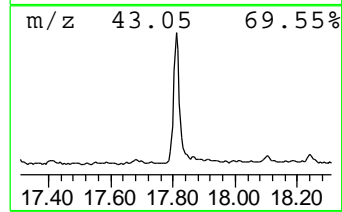
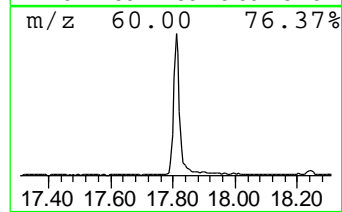
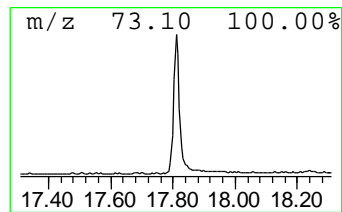
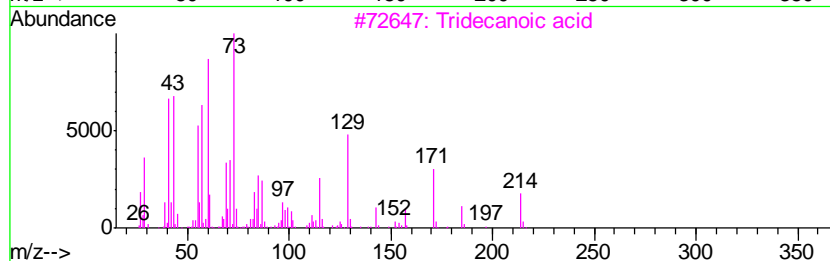
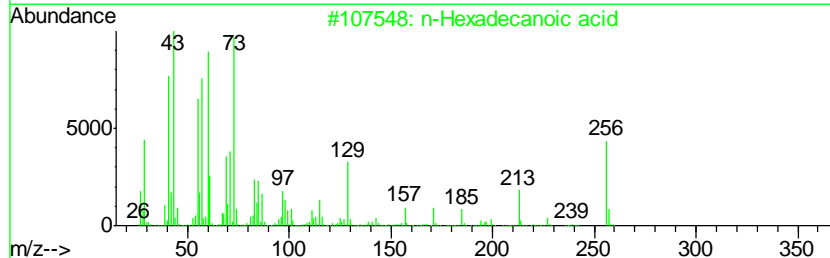
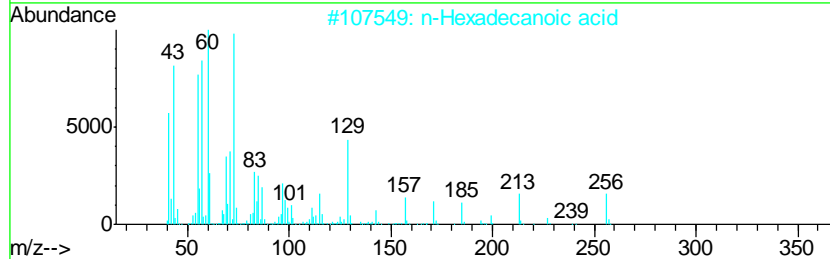
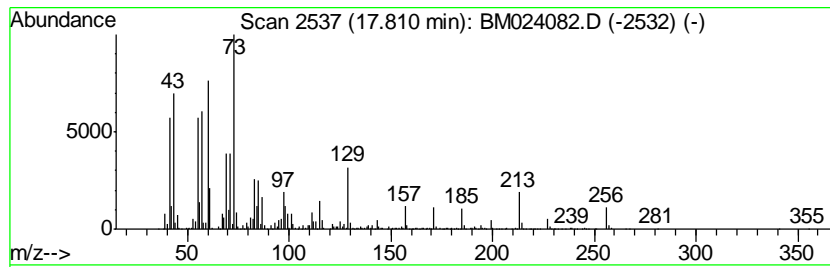
Instrument :
 BNA_M
 ClientSampled :
 BFQQ9

Quant Method : Z:\SVOASRV\HPCHEM1\BNA_M\METHODS\SOM-EPA-BM112719MA.M
 Quant Title : SVOA CALIBRATION

TIC Library : C:\DATABASE\NIST11.L
 TIC Integration Parameters: LSCINT.P

 Peak Number 2 n-Hexadecanoic acid Concentration Rank 2

| R.T. | EstConc | Area | Relative to ISTD | R.T. | | |
|---------|------------|---------------------|------------------|----------|-------------|------|
| 17.81 | 7.85 ng/ul | 2005680 | Phenanthrene-d10 | 16.89 | | |
| Hit# of | 5 | Tentative ID | MW | MolForm | CAS# | Qual |
| 1 | | n-Hexadecanoic acid | 256 | C16H32O2 | 000057-10-3 | 99 |
| 2 | | n-Hexadecanoic acid | 256 | C16H32O2 | 000057-10-3 | 98 |
| 3 | | Tridecanoic acid | 214 | C13H26O2 | 000638-53-9 | 95 |
| 4 | | n-Hexadecanoic acid | 256 | C16H32O2 | 000057-10-3 | 95 |
| 5 | | Tridecanoic acid | 214 | C13H26O2 | 000638-53-9 | 94 |



Data Path : Z:\SVOASRV\HPCHEM1\BNA_M\DATA\BM121219\
 Data File : BM024082.D
 Acq On : 13 Dec 2019 09:08
 Operator : JU
 Sample : K6132-01
 Misc :
 ALS Vial : 4 Sample Multiplier: 1

Instrument :
 BNA_M
 ClientSampleID :
 BFQQ9

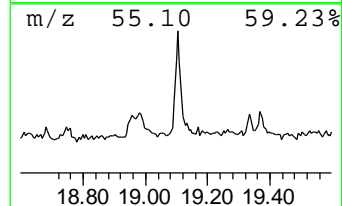
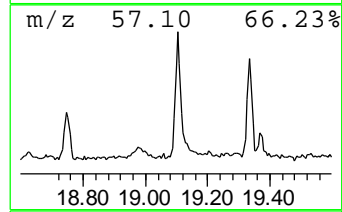
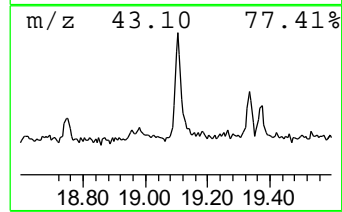
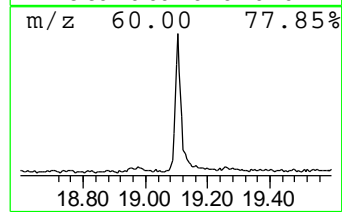
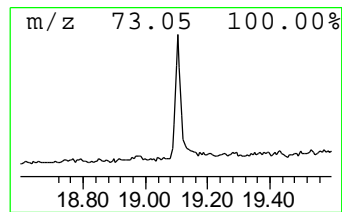
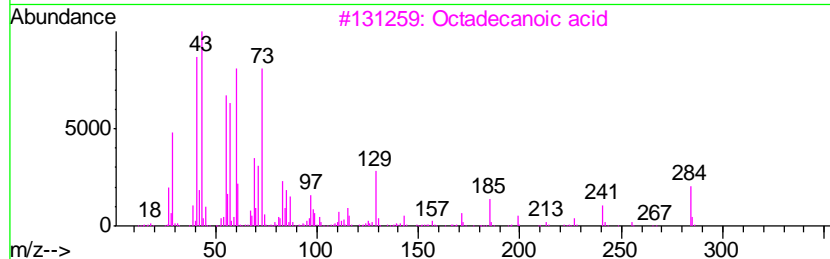
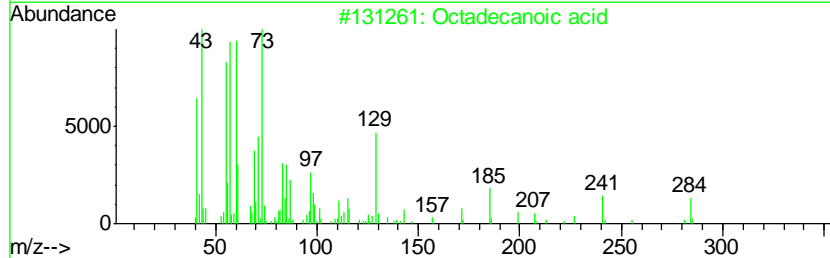
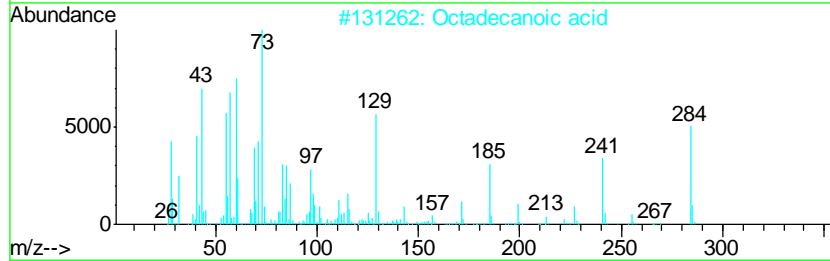
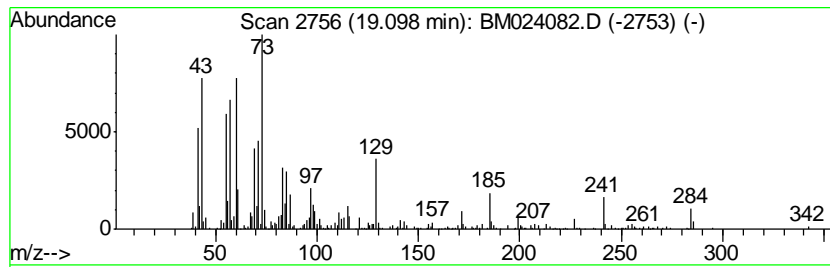
Quant Method : Z:\SVOASRV\HPCHEM1\BNA_M\METHODS\SOM-EPA-BM112719MA.M
 Quant Title : SVOA CALIBRATION

TIC Library : C:\DATABASE\NIST11.L
 TIC Integration Parameters: LSCINT.P

 Peak Number 3 Octadecanoic acid Concentration Rank 7

| R.T. | EstConc | Area | Relative to ISTD | R.T. |
|-------|------------|--------|------------------|-------|
| 19.10 | 3.16 ng/ul | 661787 | Chrysene-d12 | 21.09 |

| Hit# | of | Tentative ID | MW | MolForm | CAS# | Qual |
|------|----|---------------------|-----|----------|-------------|------|
| 1 | 5 | Octadecanoic acid | 284 | C18H36O2 | 000057-11-4 | 98 |
| 2 | | Octadecanoic acid | 284 | C18H36O2 | 000057-11-4 | 98 |
| 3 | | Octadecanoic acid | 284 | C18H36O2 | 000057-11-4 | 96 |
| 4 | | Octadecanoic acid | 284 | C18H36O2 | 000057-11-4 | 93 |
| 5 | | n-Hexadecanoic acid | 256 | C16H32O2 | 000057-10-3 | 93 |



Data Path : Z:\SVOASRV\HPCHEM1\BNA_M\DATA\BM121219\
 Data File : BM024082.D
 Acq On : 13 Dec 2019 09:08
 Operator : JU
 Sample : K6132-01
 Misc :
 ALS Vial : 4 Sample Multiplier: 1

Instrument :
 BNA_M
 ClientSampleID :
 BFQQ9

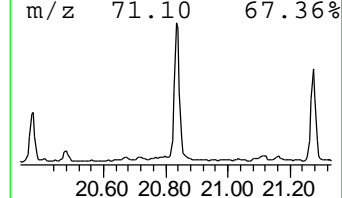
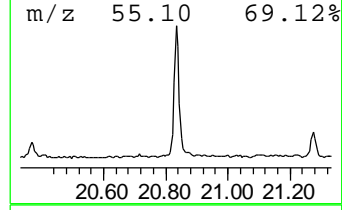
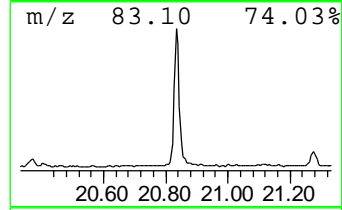
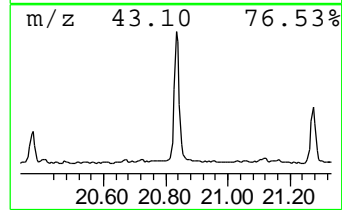
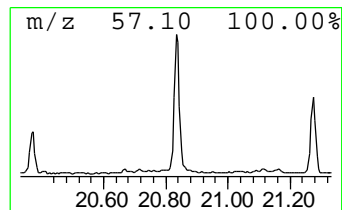
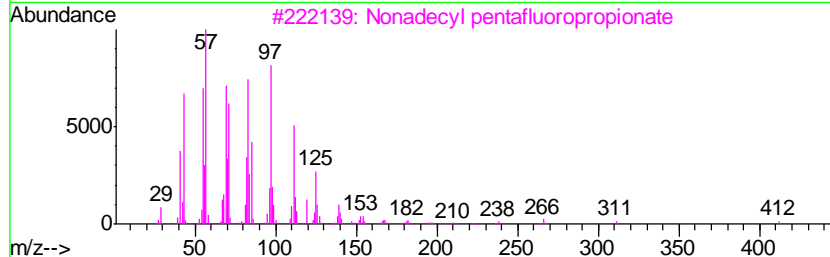
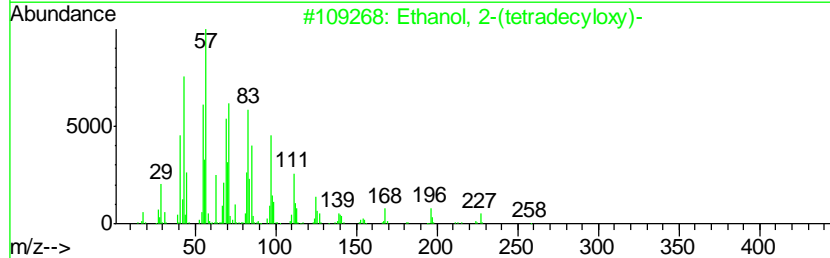
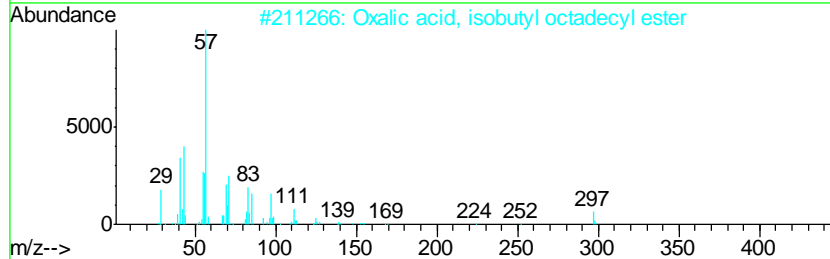
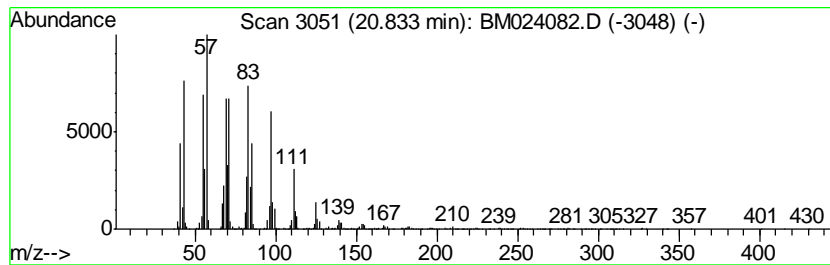
Quant Method : Z:\SVOASRV\HPCHEM1\BNA_M\METHODS\SOM-EPA-BM112719MA.M
 Quant Title : SVOA CALIBRATION

TIC Library : C:\DATABASE\NIST11.L
 TIC Integration Parameters: LSCINT.P

 Peak Number 4 Oxalic acid, isobutyl octadecyl... Concentration Rank 1

| R.T. | EstConc | Area | Relative to ISTD | R.T. |
|-------|-------------|---------|------------------|-------|
| 20.83 | 10.16 ng/ul | 2128710 | Chrysene-d12 | 21.09 |

| Hit# | of | Tentative ID | MW | MolForm | CAS# | Qual |
|------|----|---|-----|-------------|--------------|------|
| 1 | 5 | Oxalic acid, isobutyl octadecyl ... | 398 | C24H46O4 | 1000309-38-3 | 91 |
| 2 | | Ethanol, 2-(tetradecyloxy)- | 258 | C16H34O2 | 002136-70-1 | 91 |
| 3 | | Nonadecyl pentafluoropropionate | 430 | C22H39F5O2 | 1000351-88-8 | 91 |
| 4 | | Pentafluoropropionic acid, octadecyl... | 416 | C21H37F5O2 | 959261-25-7 | 90 |
| 5 | | Dichloroacetic acid, heptadecyl ... | 366 | C19H36Cl2O2 | 1000282-98-2 | 87 |



Data Path : Z:\SVOASRV\HPCHEM1\BNA_M\DATA\BM121219\
 Data File : BM024082.D
 Acq On : 13 Dec 2019 09:08
 Operator : JU
 Sample : K6132-01
 Misc :
 ALS Vial : 4 Sample Multiplier: 1

Instrument :
 BNA_M
 ClientSampleID :
 BFQQ9

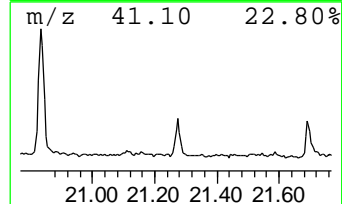
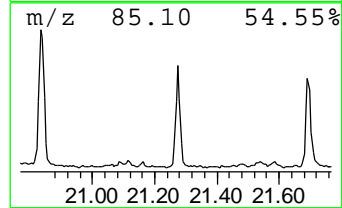
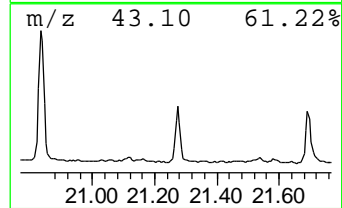
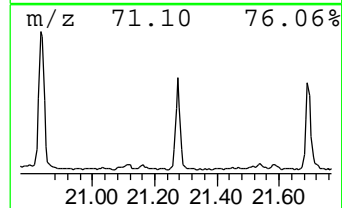
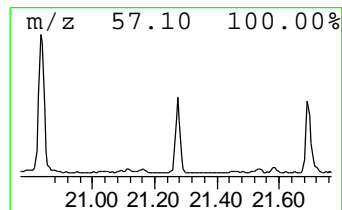
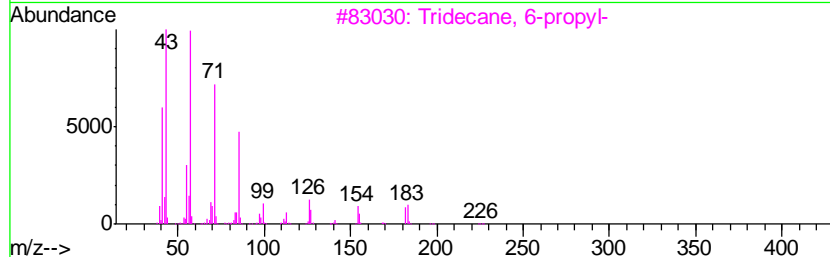
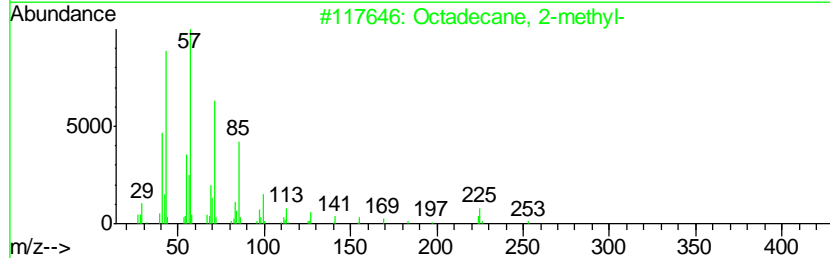
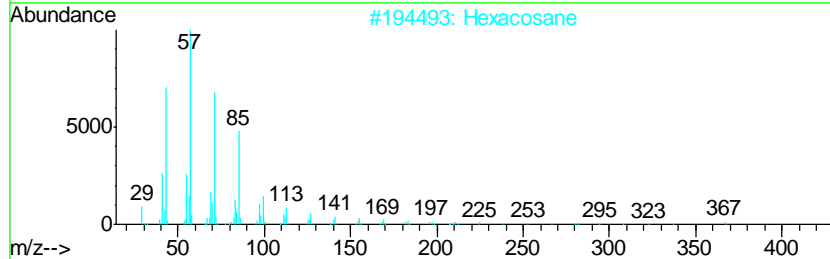
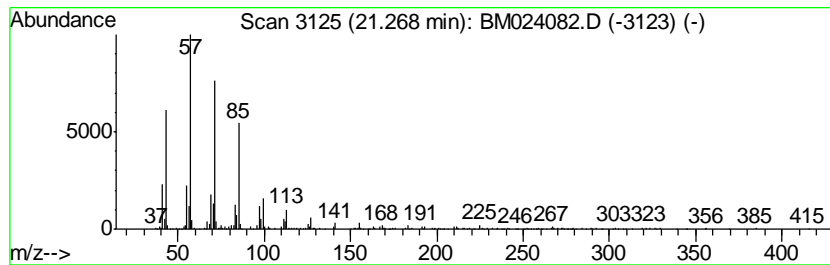
Quant Method : Z:\SVOASRV\HPCHEM1\BNA_M\METHODS\SOM-EPA-BM112719MA.M
 Quant Title : SVOA CALIBRATION

TIC Library : C:\DATABASE\NIST11.L
 TIC Integration Parameters: LSCINT.P

 Peak Number 5 (DEL) Alkane: Straight-Chai... Concentration Rank 9

| R.T. | EstConc | Area | Relative to ISTD | R.T. |
|-------|------------|--------|------------------|-------|
| 21.27 | 2.84 ng/ul | 594086 | Chrysene-d12 | 21.09 |

| Hit# | of | Tentative ID | MW | MolForm | CAS# | Qual |
|------|----|-----------------------|-----|---------|-------------|------|
| 1 | 5 | Hexacosane | 366 | C26H54 | 000630-01-3 | 91 |
| 2 | | Octadecane, 2-methyl- | 268 | C19H40 | 001560-88-9 | 90 |
| 3 | | Tridecane, 6-propyl- | 226 | C16H34 | 055045-10-8 | 87 |
| 4 | | Heneicosane | 296 | C21H44 | 000629-94-7 | 87 |
| 5 | | Heptadecane | 240 | C17H36 | 000629-78-7 | 86 |



Data Path : Z:\SVOASRV\HPCHEM1\BNA_M\DATA\BM121219\
 Data File : BM024082.D
 Acq On : 13 Dec 2019 09:08
 Operator : JU
 Sample : K6132-01
 Misc :
 ALS Vial : 4 Sample Multiplier: 1

Instrument :
 BNA_M
 ClientSampleID :
 BFQQ9

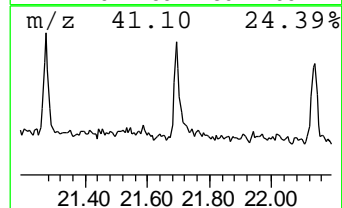
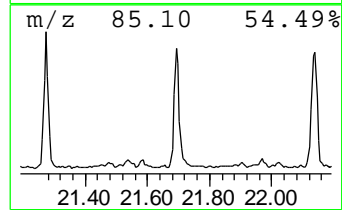
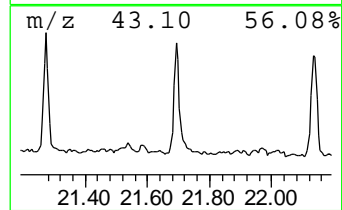
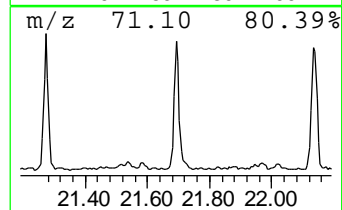
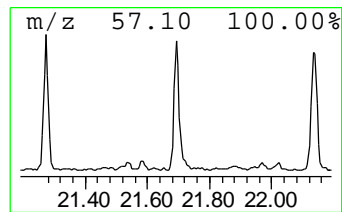
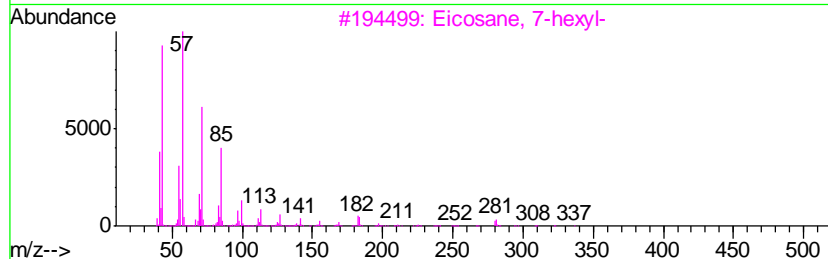
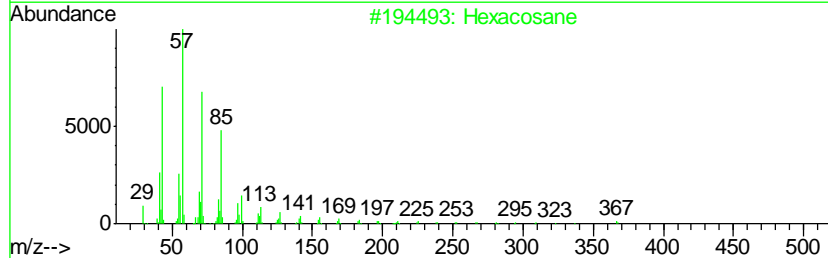
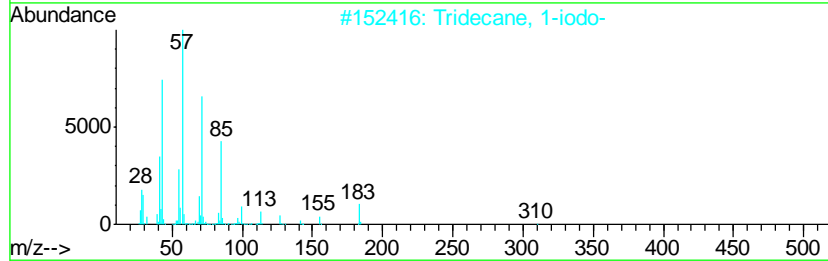
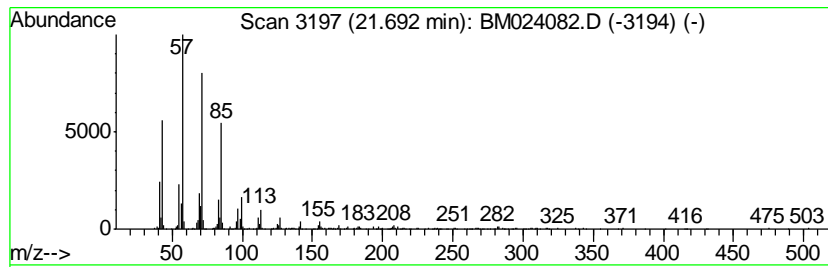
Quant Method : Z:\SVOASRV\HPCHEM1\BNA_M\METHODS\SOM-EPA-BM112719MA.M
 Quant Title : SVOA CALIBRATION

TIC Library : C:\DATABASE\NIST11.L
 TIC Integration Parameters: LSCINT.P

 Peak Number 6 Tridecane, 1-iodo- Concentration Rank 4

| R.T. | EstConc | Area | Relative to ISTD | R.T. |
|-------|------------|--------|------------------|-------|
| 21.69 | 3.65 ng/ul | 764372 | Chrysene-d12 | 21.09 |

| Hit# | of | Tentative ID | MW | MolForm | CAS# | Qual |
|------|----|--------------------|-----|---------|-------------|------|
| 1 | 5 | Tridecane, 1-iodo- | 310 | C13H27I | 035599-77-0 | 93 |
| 2 | | Hexacosane | 366 | C26H54 | 000630-01-3 | 91 |
| 3 | | Eicosane, 7-hexyl- | 366 | C26H54 | 055333-99-8 | 91 |
| 4 | | Heptacosane | 380 | C27H56 | 000593-49-7 | 90 |
| 5 | | Heneicosane | 296 | C21H44 | 000629-94-7 | 90 |



Data Path : Z:\SVOASRV\HPCHEM1\BNA_M\DATA\BM121219\
 Data File : BM024082.D
 Acq On : 13 Dec 2019 09:08
 Operator : JU
 Sample : K6132-01
 Misc :
 ALS Vial : 4 Sample Multiplier: 1

Instrument :
 BNA_M
 ClientSampleID :
 BFQQ9

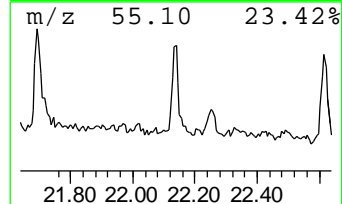
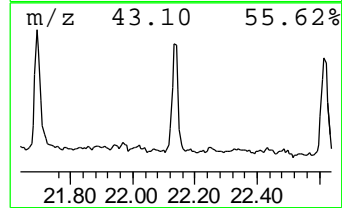
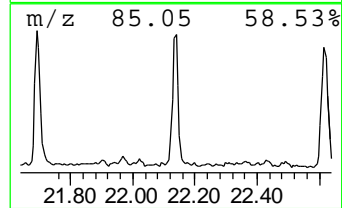
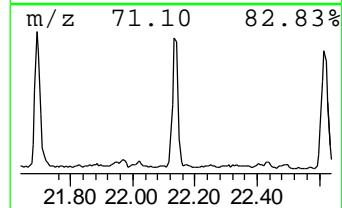
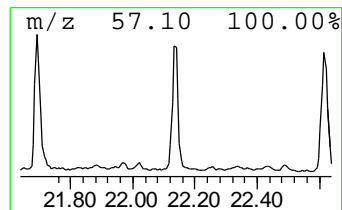
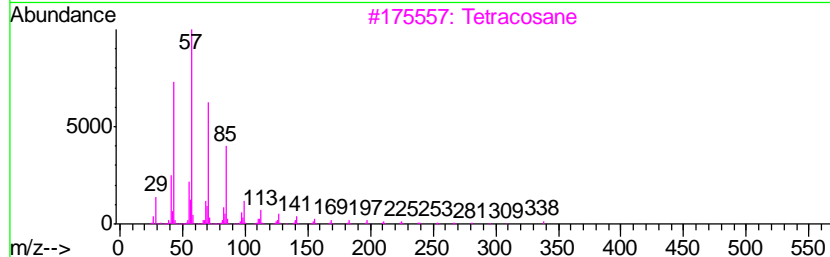
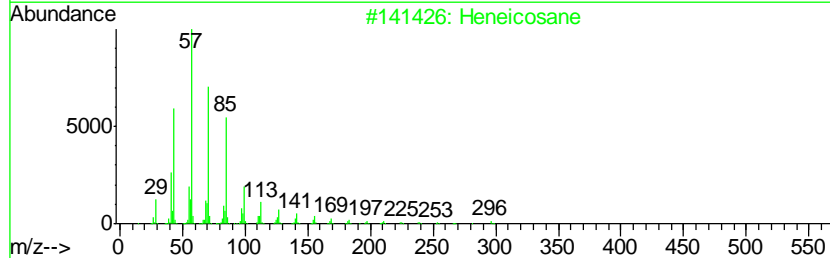
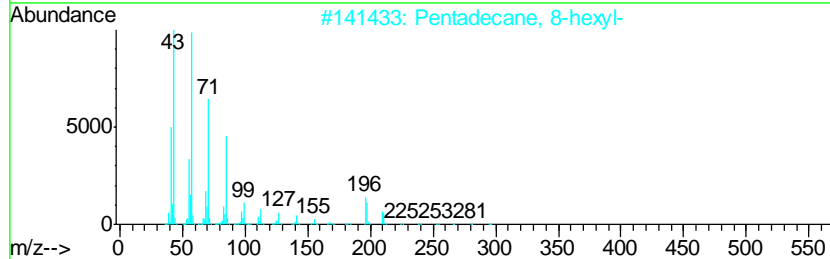
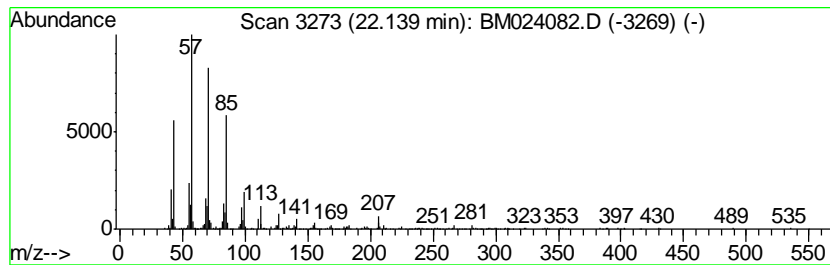
Quant Method : Z:\SVOASRV\HPCHEM1\BNA_M\METHODS\SOM-EPA-BM112719MA.M
 Quant Title : SVOA CALIBRATION

TIC Library : C:\DATABASE\NIST11.L
 TIC Integration Parameters: LSCINT.P

 Peak Number 7 (DEL) Alkane: Straight-Chai... Concentration Rank 5

| R.T. | EstConc | Area | Relative to ISTD | R.T. |
|-------|------------|--------|------------------|-------|
| 22.14 | 3.23 ng/ul | 675627 | Chrysene-d12 | 21.09 |

| Hit# | of | Tentative ID | MW | MolForm | CAS# | Qual |
|------|----|-----------------------|-----|---------|-------------|------|
| 1 | 5 | Pentadecane, 8-hexyl- | 296 | C21H44 | 013475-75-7 | 94 |
| 2 | | Heneicosane | 296 | C21H44 | 000629-94-7 | 91 |
| 3 | | Tetracosane | 338 | C24H50 | 000646-31-1 | 91 |
| 4 | | Heptadecane, 9-octyl- | 352 | C25H52 | 007225-64-1 | 91 |
| 5 | | 10-Methylnonadecane | 282 | C20H42 | 056862-62-5 | 91 |



Data Path : Z:\SVOASRV\HPCHEM1\BNA_M\DATA\BM121219\
 Data File : BM024082.D
 Acq On : 13 Dec 2019 09:08
 Operator : JU
 Sample : K6132-01
 Misc :
 ALS Vial : 4 Sample Multiplier: 1

Instrument :
 BNA_M
 ClientSampleID :
 BFQQ9

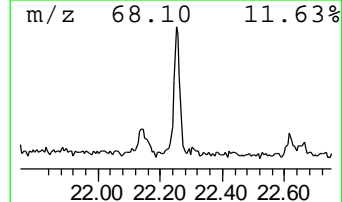
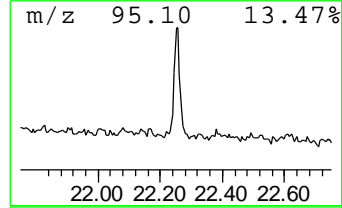
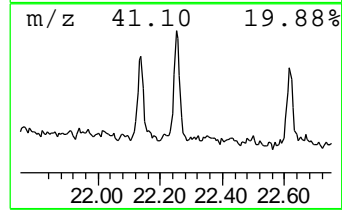
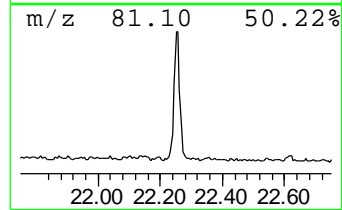
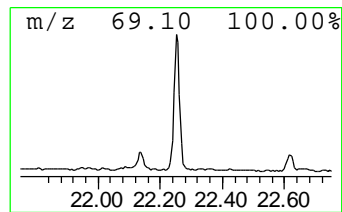
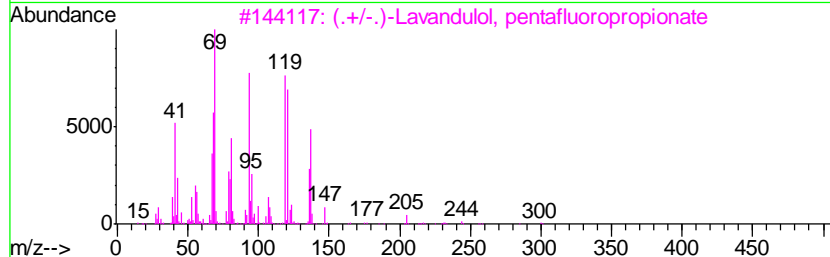
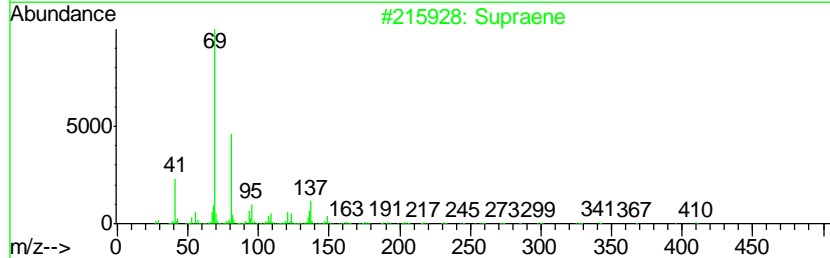
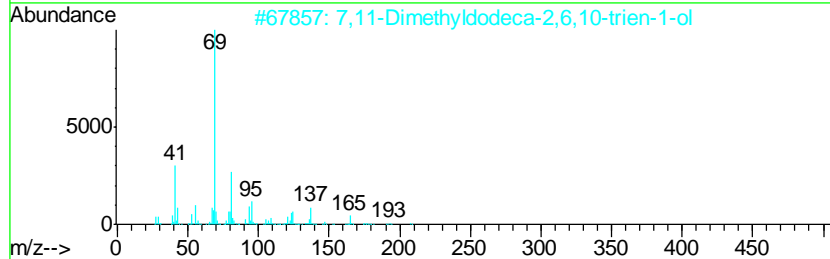
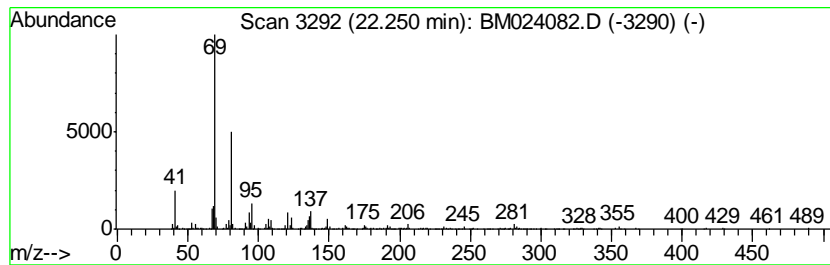
Quant Method : Z:\SVOASRV\HPCHEM1\BNA_M\METHODS\SOM-EPA-BM112719MA.M
 Quant Title : SVOA CALIBRATION

TIC Library : C:\DATABASE\NIST11.L
 TIC Integration Parameters: LSCINT.P

 Peak Number 8 7,11-Dimethyldodeca-2,6,10-... Concentration Rank 10

| R.T. | EstConc | Area | Relative to ISTD | R.T. |
|-------|------------|--------|------------------|-------|
| 22.25 | 2.74 ng/ul | 604400 | Perylene-d12 | 23.23 |

| Hit# | of | Tentative ID | MW | MolForm | CAS# | Qual |
|------|----|-------------------------------------|-----|------------|--------------|------|
| 1 | 5 | 7,11-Dimethyldodeca-2,6,10-trien... | 208 | C14H24O | 125529-10-4 | 72 |
| 2 | | Supraene | 410 | C30H50 | 007683-64-9 | 64 |
| 3 | | (.+/-)-Lavandulol, pentafluorop... | 300 | C13H17F5O2 | 1000352-63-1 | 56 |
| 4 | | 3,7,11-Tridecatrienitrile, 4,8... | 231 | C16H25N | 006006-01-5 | 56 |
| 5 | | (Z)-all-trans-3,7,11-Trimethyl-2... | 249 | C16H27NO | 1000161-37-3 | 56 |



Data Path : Z:\SVOASRV\HPCHEM1\BNA_M\DATA\BM121219\
 Data File : BM024082.D
 Acq On : 13 Dec 2019 09:08
 Operator : JU
 Sample : K6132-01
 Misc :
 ALS Vial : 4 Sample Multiplier: 1

Instrument :
 BNA_M
 ClientSampleId :
 BFQQ9

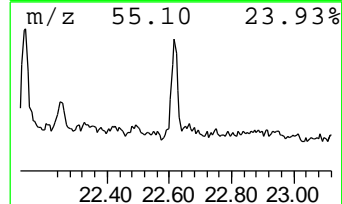
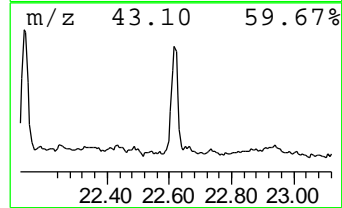
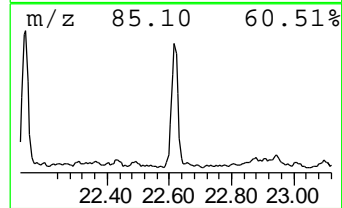
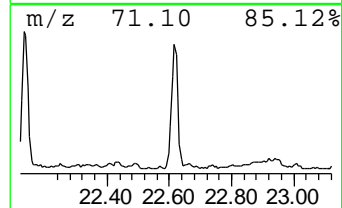
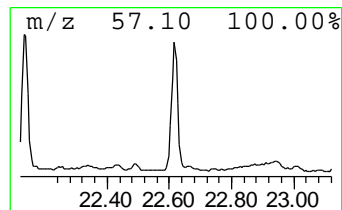
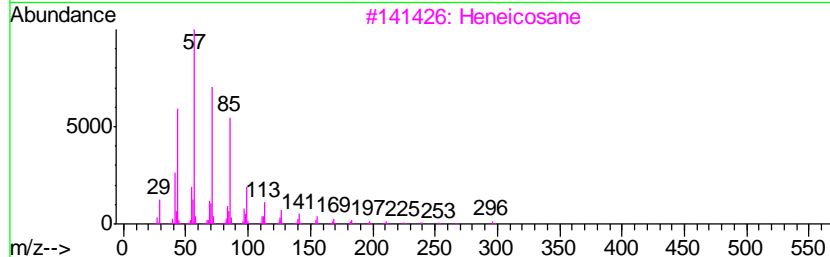
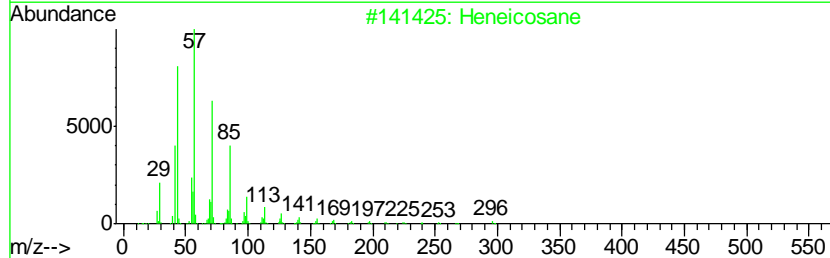
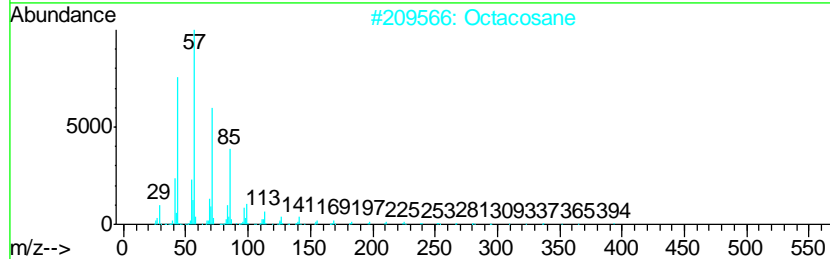
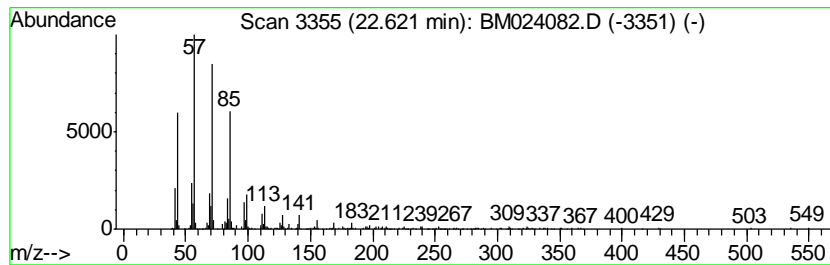
Quant Method : Z:\SVOASRV\HPCHEM1\BNA_M\METHODS\SOM-EPA-BM112719MA.M
 Quant Title : SVOA CALIBRATION

TIC Library : C:\DATABASE\NIST11.L
 TIC Integration Parameters: LSCINT.P

 Peak Number 9 (DEL) Alkane: Straight-Chai... Concentration Rank 8

| R.T. | EstConc | Area | Relative to ISTD | R.T. |
|-------|------------|--------|------------------|-------|
| 22.62 | 2.92 ng/ul | 642296 | Perylene-d12 | 23.23 |

| Hit# | of | Tentative ID | MW | MolForm | CAS# | Qual |
|------|----|-----------------------|-----|---------|-------------|------|
| 1 | 5 | Octacosane | 394 | C28H58 | 000630-02-4 | 91 |
| 2 | | Heneicosane | 296 | C21H44 | 000629-94-7 | 91 |
| 3 | | Heneicosane | 296 | C21H44 | 000629-94-7 | 91 |
| 4 | | Tetracosane | 338 | C24H50 | 000646-31-1 | 91 |
| 5 | | Heptadecane, 9-octyl- | 352 | C25H52 | 007225-64-1 | 91 |



Data Path : Z:\SVOASRV\HPCHEM1\BNA_M\DATA\BM121219\
 Data File : BM024082.D
 Acq On : 13 Dec 2019 09:08
 Operator : JU
 Sample : K6132-01
 Misc :
 ALS Vial : 4 Sample Multiplier: 1

Instrument :
 BNA_M
 ClientSampleID :
 BFQQ9

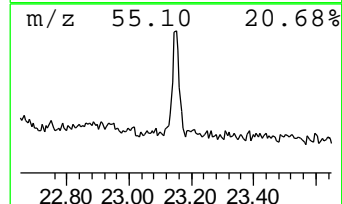
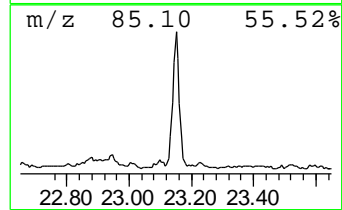
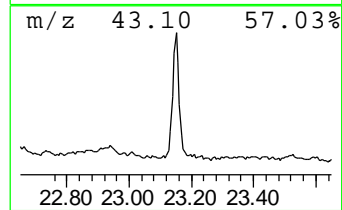
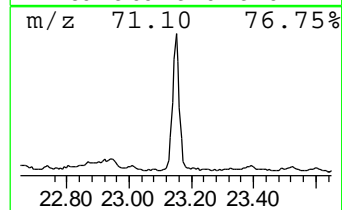
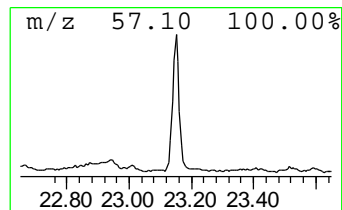
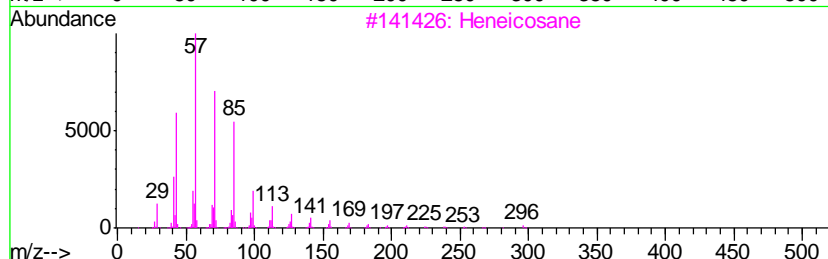
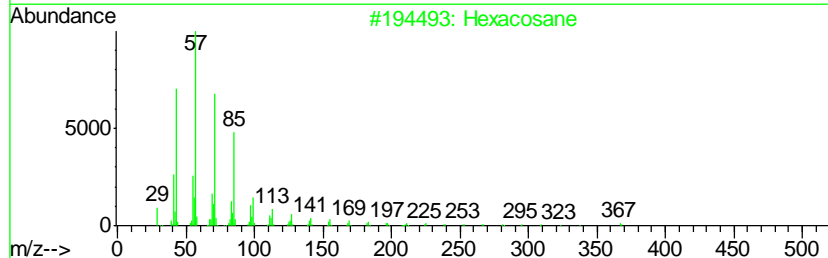
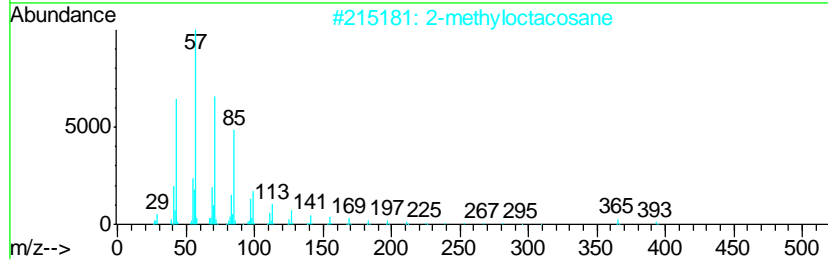
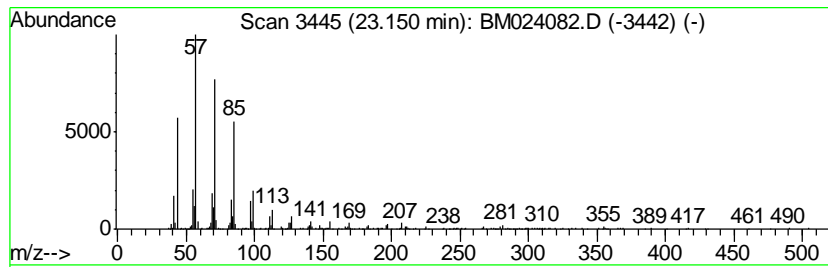
Quant Method : Z:\SVOASRV\HPCHEM1\BNA_M\METHODS\SOM-EPA-BM112719MA.M
 Quant Title : SVOA CALIBRATION

TIC Library : C:\DATABASE\NIST11.L
 TIC Integration Parameters: LSCINT.P

 Peak Number 10 (DEL) Alkane: Straight-Chai... Concentration Rank 6

| R.T. | EstConc | Area | Relative to ISTD | R.T. |
|-------|------------|--------|------------------|-------|
| 23.15 | 3.19 ng/ul | 703249 | Perylene-d12 | 23.23 |

| Hit# | of | Tentative ID | MW | MolForm | CAS# | Qual |
|------|----|--------------------|-----|---------|--------------|------|
| 1 | 5 | 2-methyloctacosane | 408 | C29H60 | 1000376-72-8 | 91 |
| 2 | | Hexacosane | 366 | C26H54 | 000630-01-3 | 90 |
| 3 | | Heneicosane | 296 | C21H44 | 000629-94-7 | 90 |
| 4 | | Heneicosane | 296 | C21H44 | 000629-94-7 | 86 |
| 5 | | Heptadecane | 240 | C17H36 | 000629-78-7 | 86 |



Data Path : Z:\SVOASRV\HPCHEM1\BNA_M\DATA\BM121219\
 Data File : BM024082.D
 Acq On : 13 Dec 2019 09:08
 Operator : JU
 Sample : K6132-01
 Misc :
 ALS Vial : 4 Sample Multiplier: 1

Instrument :
 BNA_M
 ClientSampleId :
 BFQQ9

Quant Method : Z:\SVOASRV\HPCHEM1\BNA_M\METHODS\SOM-EPA-BM112719MA.M
 Quant Title : SVOA CALIBRATION

TIC Library : C:\DATABASE\NIST11.L
 TIC Integration Parameters: LSCINT.P

| TIC Top Hit name | RT | EstConc | Units | Response | --Internal Standard-- | | | |
|----------------------|-------|---------|-------|----------|-----------------------|-------|---------|------|
| | | | | | # | RT | Resp | Conc |
| Ethanone, 1-(1,4-... | 8.97 | 4.5 | ng/ul | 823171 | 2 | 10.24 | 3676560 | 20.0 |
| n-Hexadecanoic acid | 17.81 | 7.8 | ng/ul | 2005680 | 4 | 16.89 | 5107940 | 20.0 |
| Octadecanoic acid | 19.10 | 3.2 | ng/ul | 661787 | 5 | 21.09 | 4189500 | 20.0 |
| Oxalic acid, isob... | 20.83 | 10.2 | ng/ul | 2128710 | 5 | 21.09 | 4189500 | 20.0 |
| (DEL) Alkane: Str... | 21.27 | 2.8 | ng/ul | 594086 | 5 | 21.09 | 4189500 | 20.0 |
| Tridecane, 1-iodo- | 21.69 | 3.6 | ng/ul | 764372 | 5 | 21.09 | 4189500 | 20.0 |
| (DEL) Alkane: Str... | 22.14 | 3.2 | ng/ul | 675627 | 5 | 21.09 | 4189500 | 20.0 |
| 7,11-Dimethyldode... | 22.25 | 2.7 | ng/ul | 604400 | 6 | 23.23 | 4405390 | 20.0 |
| (DEL) Alkane: Str... | 22.62 | 2.9 | ng/ul | 642296 | 6 | 23.23 | 4405390 | 20.0 |
| (DEL) Alkane: Str... | 23.15 | 3.2 | ng/ul | 703249 | 6 | 23.23 | 4405390 | 20.0 |