

Data Path : Z:\SVOASRV\HPCHEM1\BNA M\DATA\BM121219\  
 Data File : BM024096.D  
 Acq On : 13 Dec 2019 17:48  
 Operator : JU  
 Sample : K6167-17  
 Misc :  
 ALS Vial : 17 Sample Multiplier: 1

Instrument :  
 BNA\_M  
 ClientSampleId :  
 BFQX0

Integration Parameters: LSCINT.P

Integrator: RTE  
 Smoothing : OFF  
 Sampling : 1  
 Start Thrs: 0.2  
 Stop Thrs : 0

Filtering: 5  
 Min Area: 0.1 % of largest Peak  
 Max Peaks: 100  
 Peak Location: TOP

If leading or trailing edge < 100 prefer < Baseline drop else tangent >  
 Peak separation: 5

Method : Z:\SVOASRV\HPCHEM1\BNA\_M\METHODS\SOM-EPA-BM112719MA.M  
 Title : SVOA CALIBRATION

Signal : TIC

peak #	R.T. min	first scan	max scan	last scan	PK TY	peak height	corr. area	corr. % max.	% of total
1	3.034	22	25	28	rBV	99744	133016	0.24%	0.090%
2	4.028	190	194	204	rBV	64277	111158	0.20%	0.076%
3	4.828	325	330	337	rVB	56679	90079	0.16%	0.061%
4	5.769	485	490	506	rBV4	36620	109156	0.19%	0.074%
5	6.669	634	643	655	rBV2	302158	637978	1.13%	0.434%
6	6.822	664	669	688	rBV	1043171	1700269	3.02%	1.156%
7	7.010	694	701	715	rBV	1214440	1961877	3.48%	1.334%
8	7.469	772	779	789	rBV	1182691	1884244	3.34%	1.282%
9	7.557	789	794	802	rVV	70407	134764	0.24%	0.092%
10	8.193	893	902	912	rBV	869190	1457844	2.59%	0.992%
11	8.622	968	975	987	rVB	1253939	2048391	3.64%	1.393%
12	9.063	1040	1050	1052	rBV	67026	123468	0.22%	0.084%
13	9.098	1052	1056	1063	rVB	175206	289676	0.51%	0.197%
14	9.340	1090	1097	1109	rBV	1028234	1744329	3.10%	1.186%
15	9.875	1181	1188	1204	rBV	1506419	2819057	5.00%	1.917%
16	10.239	1242	1250	1257	rBV	1558891	2592566	4.60%	1.763%
17	10.410	1273	1279	1288	rVB2	43728	96663	0.17%	0.066%
18	10.651	1314	1320	1334	rBV	590975	1049277	1.86%	0.714%
19	11.157	1401	1406	1412	rVB3	36429	64718	0.11%	0.044%
20	12.063	1555	1560	1565	rBV	73088	138014	0.24%	0.094%
21	12.128	1565	1571	1577	rVB	331392	492309	0.87%	0.335%
22	12.604	1646	1652	1660	rBV5	45225	89513	0.16%	0.061%
23	13.045	1720	1727	1731	rBV	94265	159298	0.28%	0.108%
24	13.551	1807	1813	1818	rBV	2889025	3956565	7.02%	2.691%
25	13.598	1818	1821	1828	rVB	192293	276615	0.49%	0.188%
26	13.686	1828	1836	1849	rBV2	121944	480841	0.85%	0.327%
27	13.816	1852	1858	1869	rVB	3412517	5049364	8.96%	3.434%
28	13.963	1878	1883	1884	rBV	115053	167081	0.30%	0.114%
29	13.980	1884	1886	1896	rVB	139429	205498	0.36%	0.140%
30	14.127	1905	1911	1919	rBV	2332771	3385839	6.01%	2.303%
31	14.233	1919	1929	1947	rBV	2659515	5009692	8.89%	3.407%
32	14.392	1951	1956	1964	rVV	225419	448745	0.80%	0.305%
33	14.910	2039	2044	2049	rVB2	77228	134429	0.24%	0.091%
34	15.133	2075	2082	2090	rBV	4268624	6184941	10.98%	4.207%

Data Path : Z:\SVOASRV\HPCHEM1\BNA M\DATA\BM121219\  
 Data File : BM024096.D  
 Acq On : 13 Dec 2019 17:48  
 Operator : JU  
 Sample : K6167-17  
 Misc :  
 ALS Vial : 17 Sample Multiplier: 1

Instrument :  
 BNA\_M  
 ClientSampleId :  
 BFQX0

## Integration Parameters: LSCINT.P

Integrator: RTE  
 Smoothing : OFF  
 Sampling : 1  
 Start Thrs: 0.2  
 Stop Thrs : 0

Filtering: 5  
 Min Area: 0.1 % of largest Peak  
 Max Peaks: 100  
 Peak Location: TOP

If leading or trailing edge < 100 prefer < Baseline drop else tangent >  
 Peak separation: 5

Method : Z:\SVOASRV\HPCHEM1\BNA\_M\METHODS\SOM-EPA-BM112719MA.M  
 Title : SVOA CALIBRATION

35	15.280	2101	2107	2117	rBV	1325459	2016106	3.58%	1.371%
36	15.551	2143	2153	2157	rBV	33496968	56341947	100.00%	38.321%
37	15.774	2187	2191	2194	rBV2	55249	76262	0.14%	0.052%
38	16.674	2340	2344	2347	rBV5	45013	66257	0.12%	0.045%
39	16.886	2373	2380	2390	rBV	2715382	3872208	6.87%	2.634%
40	16.980	2390	2396	2411	rVV2	4721925	6659082	11.82%	4.529%
41	17.598	2496	2501	2507	rVB	173466	234854	0.42%	0.160%
42	17.810	2532	2537	2553	rBV	780635	1410487	2.50%	0.959%
43	19.104	2753	2757	2766	rBV	477644	730884	1.30%	0.497%
44	19.286	2783	2788	2795	rBV	5408046	7499934	13.31%	5.101%
45	20.833	3047	3051	3057	rBV2	961231	1205286	2.14%	0.820%
46	21.092	3090	3095	3102	rBV	3538500	4403056	7.81%	2.995%
47	21.274	3123	3126	3129	rVB2	202127	217501	0.39%	0.148%
48	21.692	3194	3197	3207	rVB	340419	483188	0.86%	0.329%
49	22.133	3269	3272	3278	rVB	535460	654726	1.16%	0.445%
50	22.615	3350	3354	3359	rVB	620008	848590	1.51%	0.577%
51	23.097	3429	3436	3441	rBV	4834633	8331857	14.79%	5.667%
52	23.145	3441	3444	3450	rVV	687962	1046566	1.86%	0.712%
53	23.227	3452	3458	3469	rVB	2648869	4789031	8.50%	3.257%
54	23.750	3543	3547	3555	rVB	543962	912929	1.62%	0.621%

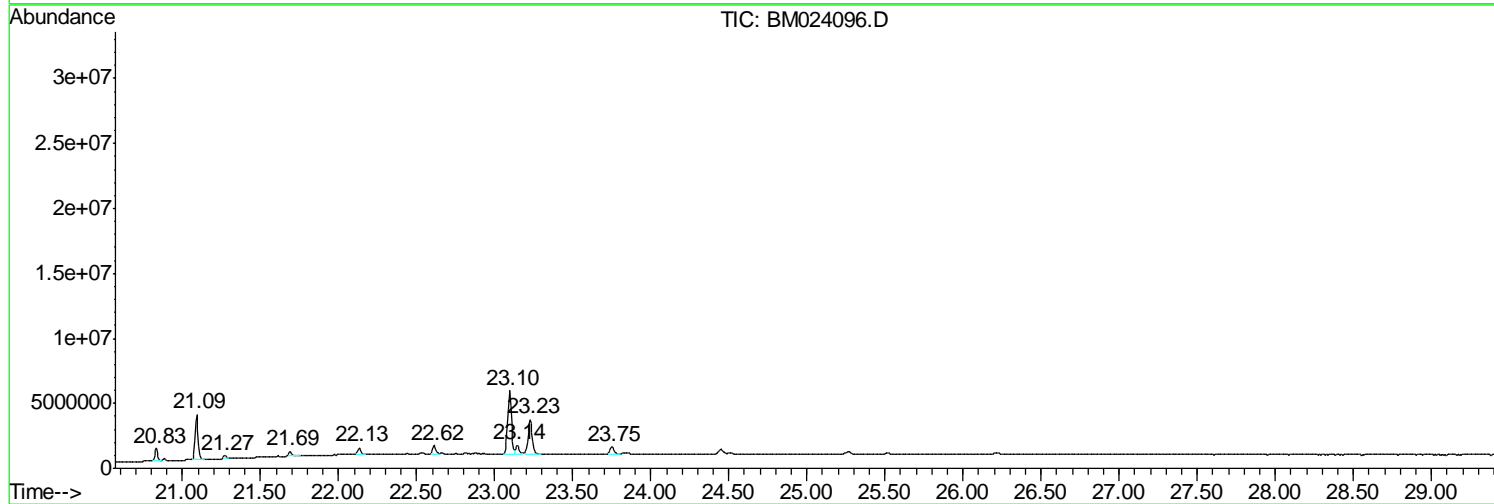
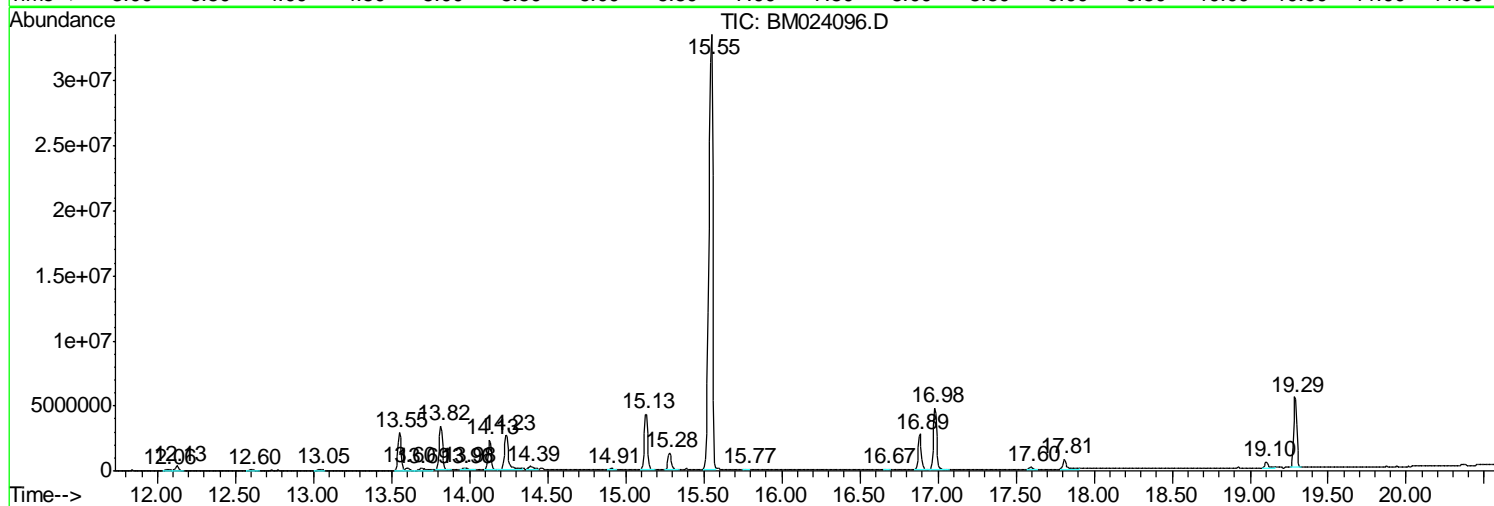
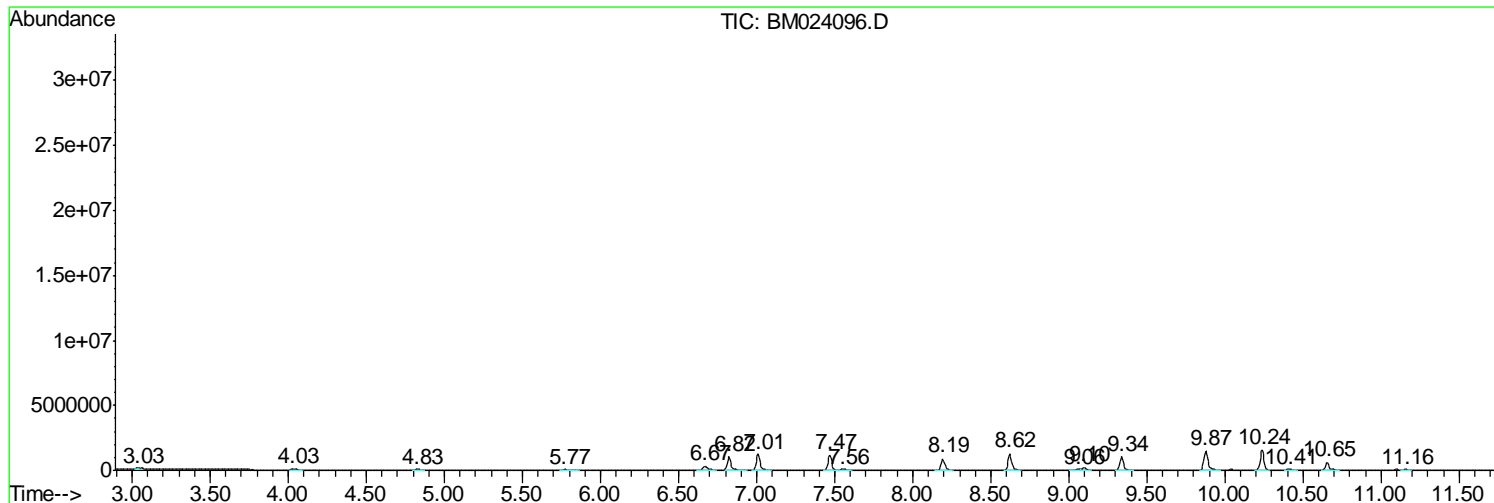
Sum of corrected areas: 147028025

Data Path : Z:\SVOASRV\HPCHEM1\BNA M\DATA\BM121219\  
 Data File : BM024096.D  
 Acq On : 13 Dec 2019 17:48  
 Operator : JU  
 Sample : K6167-17  
 Misc :  
 ALS Vial : 17 Sample Multiplier: 1

**Instrument :**  
 BNA\_M  
**ClientSampleId :**  
 BFQX0

Quant Method : Z:\SVOASRV\HPCHEM1\BNA\_M\METHODS\SOM-EPA-BM112719MA.M  
 Quant Title : SVOA CALIBRATION

TIC Library : C:\DATABASE\NIST11.L  
 TIC Integration Parameters: LSCINT.P



Data Path : Z:\SVOASRV\HPCHEM1\BNA M\DATA\BM121219\  
 Data File : BM024096.D  
 Acq On : 13 Dec 2019 17:48  
 Operator : JU  
 Sample : K6167-17  
 Misc :  
 ALS Vial : 17 Sample Multiplier: 1

Instrument :  
 BNA\_M  
 ClientSampleId :  
 BFQX0

Quant Method : Z:\SVOASRV\HPCHEM1\BNA\_M\METHODS\SOM-EPA-BM112719MA.M  
 Quant Title : SVOA CALIBRATION

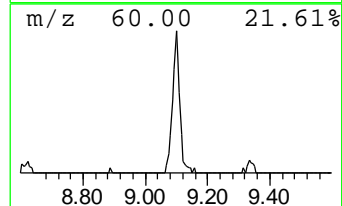
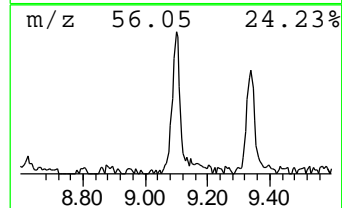
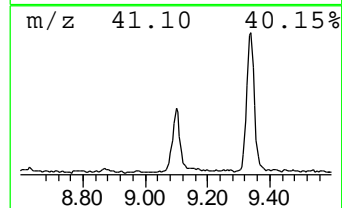
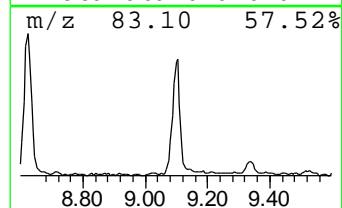
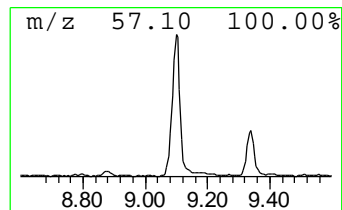
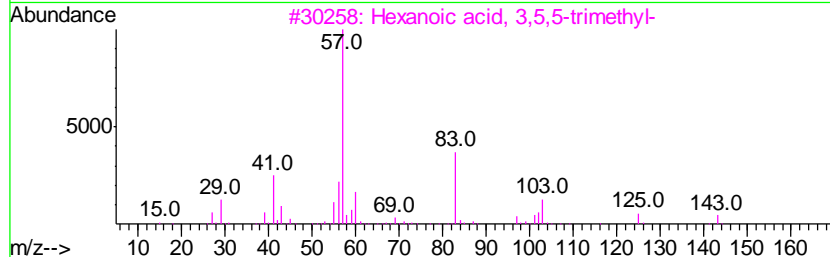
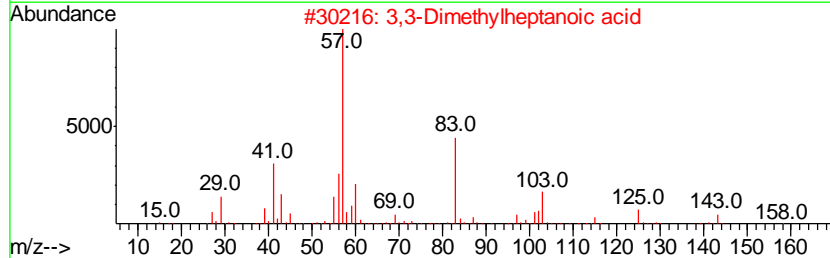
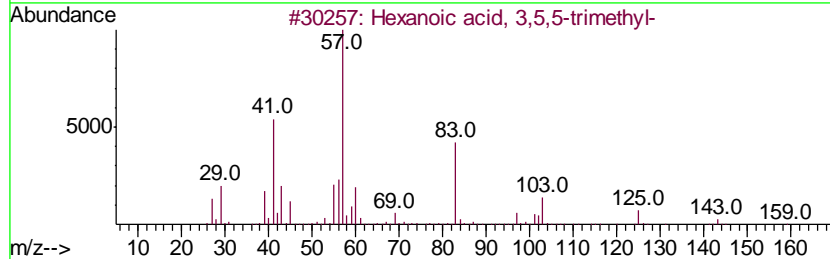
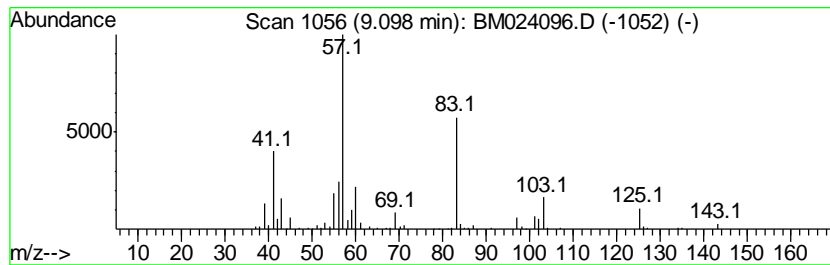
TIC Library : C:\DATABASE\NIST11.L  
 TIC Integration Parameters: LSCINT.P

\*\*\*\*\*  
 Peak Number 1 Hexanoic acid, 3,5,5-trimet... Concentration Rank 12

R.T.	EstConc	Area	Relative to ISTD	R.T.
9.10	2.23 ng/ul	289676	Naphthalene-d8	10.24

Hit#	of	Tentative ID	MW	MolForm	CAS#	Qual
1	5	Hexanoic acid, 3,5,5-trimethyl-	158	C9H18O2	003302-10-1	83
2		3,3-Dimethylheptanoic acid	158	C9H18O2	067061-30-7	74
3		Hexanoic acid, 3,5,5-trimethyl-	158	C9H18O2	003302-10-1	72
4		Hexanoic acid, 3,5,5-trimethyl-	158	C9H18O2	003302-10-1	59
5		Hexanoyl chloride, 3,5,5-trimethyl-	176	C9H17ClO	036727-29-4	50



Data Path : Z:\SVOASRV\HPCHEM1\BNA M\DATA\BM121219\  
 Data File : BM024096.D  
 Acq On : 13 Dec 2019 17:48  
 Operator : JU  
 Sample : K6167-17  
 Misc :  
 ALS Vial : 17 Sample Multiplier: 1

Instrument :  
 BNA\_M  
 ClientSampled :  
 BFQX0

Quant Method : Z:\SVOASRV\HPCHEM1\BNA\_M\METHODS\SOM-EPA-BM112719MA.M  
 Quant Title : SVOA CALIBRATION

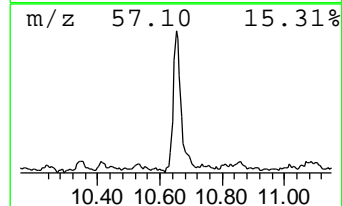
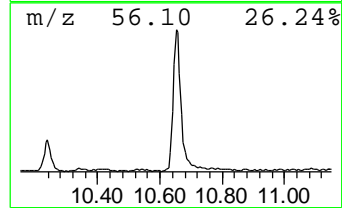
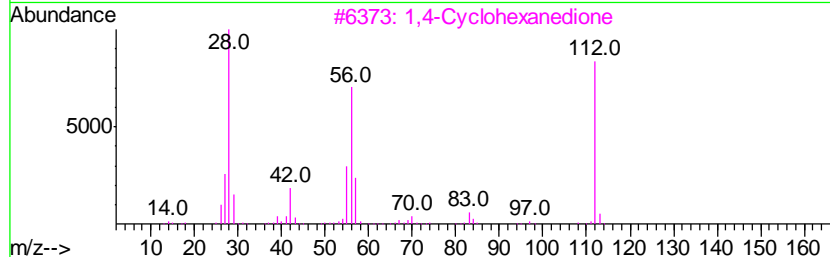
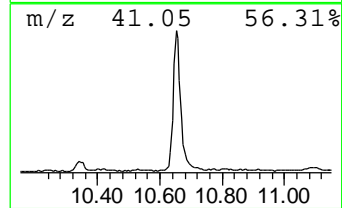
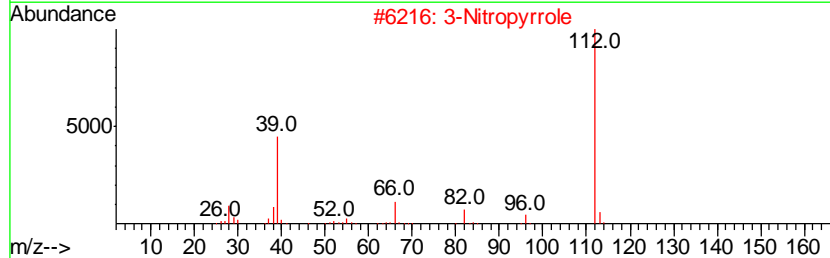
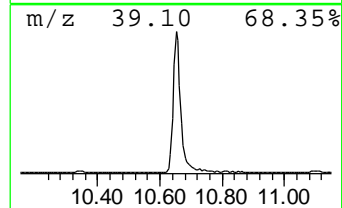
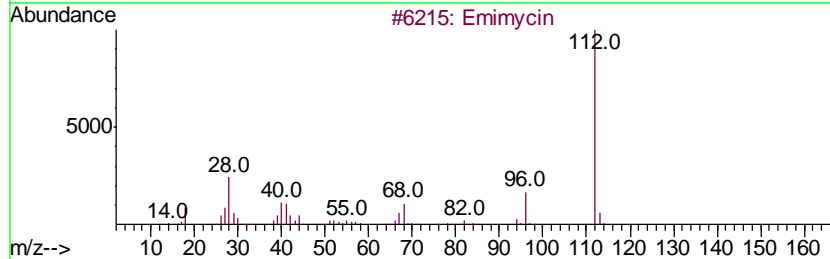
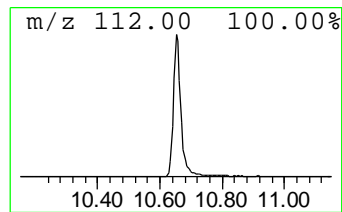
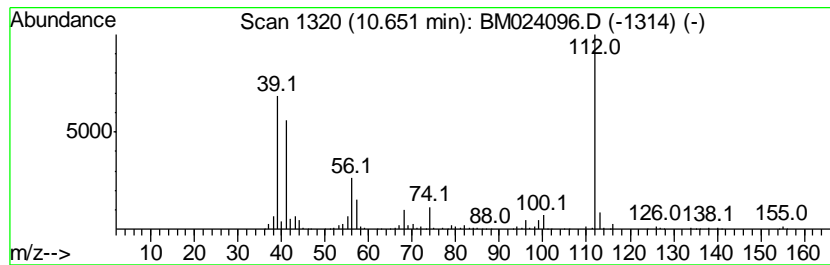
TIC Library : C:\DATABASE\NIST11.L  
 TIC Integration Parameters: LSCINT.P

\*\*\*\*\*  
 Peak Number 2 unknown-01 Concentration Rank 3

R.T.	EstConc	Area	Relative to ISTD	R.T.
10.65	8.09 ng/ul	1049280	Naphthalene-d8	10.24

Hit#	of	Tentative ID	MW	MolForm	CAS#	Qual
1	5	Emimycin	112	C4H4N2O2	003735-46-4	43
2		3-Nitropyrrole	112	C4H4N2O2	005930-94-9	38
3		1,4-Cyclohexanedione	112	C6H8O2	000637-88-7	38
4		Aminomaleimide	112	C4H4N2O2	037770-94-8	38
5		(6S,12aR,E)-2,2-Dimethyltetrahyd...	222	C13H22N2O	109175-49-7	38



Data Path : Z:\SVOASRV\HPCHEM1\BNA M\DATA\BM121219\  
 Data File : BM024096.D  
 Acq On : 13 Dec 2019 17:48  
 Operator : JU  
 Sample : K6167-17  
 Misc :  
 ALS Vial : 17 Sample Multiplier: 1

Instrument :  
 BNA\_M  
 ClientSampleID :  
 BFQX0

Quant Method : Z:\SVOASRV\HPCHEM1\BNA\_M\METHODS\SOM-EPA-BM112719MA.M  
 Quant Title : SVOA CALIBRATION

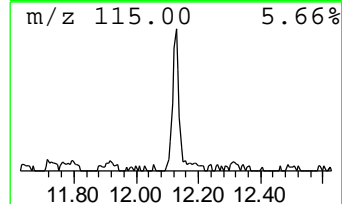
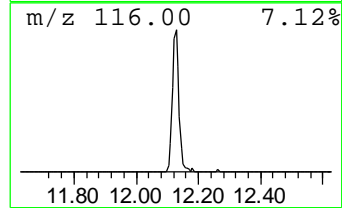
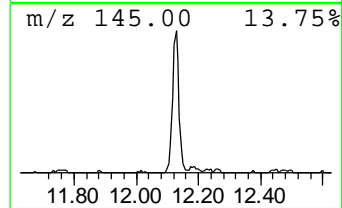
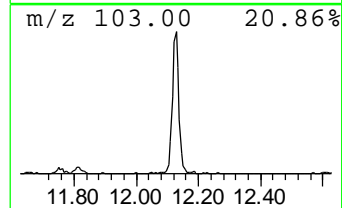
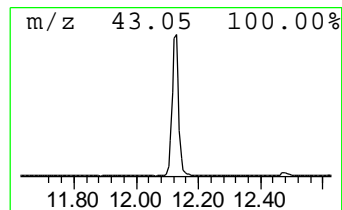
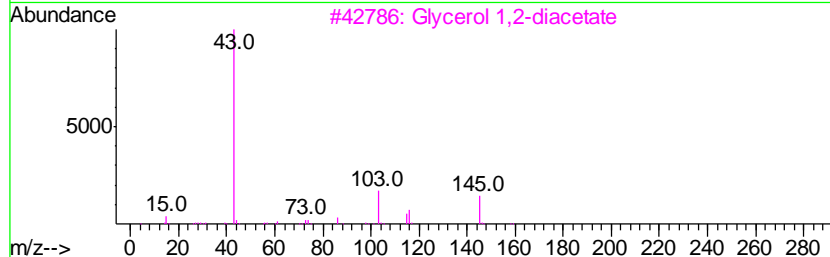
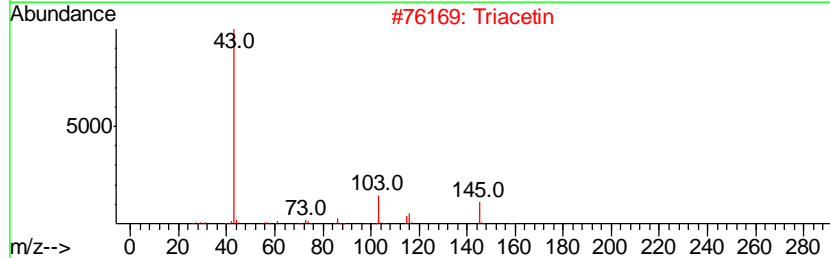
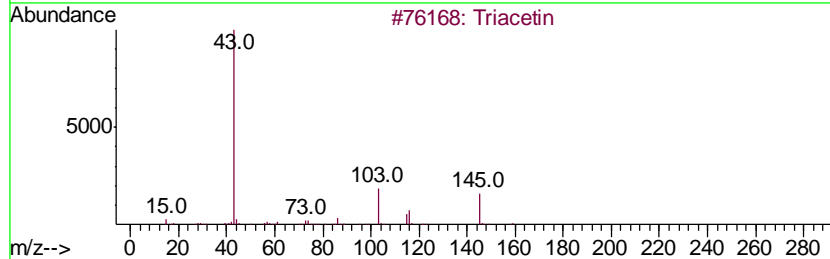
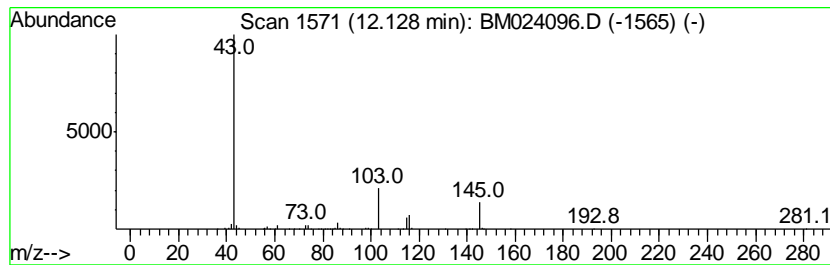
TIC Library : C:\DATABASE\NIST11.L  
 TIC Integration Parameters: LSCINT.P

\*\*\*\*\*  
 Peak Number 3 Triacetin Concentration Rank 7

R.T.	EstConc	Area	Relative to ISTD	R.T.
12.13	3.80 ng/ul	492309	Naphthalene-d8	10.24

Hit#	of	Tentative ID	MW	MolForm	CAS#	Qual
1	5	Triacetin	218	C9H14O6	000102-76-1	90
2		Triacetin	218	C9H14O6	000102-76-1	90
3		Glycerol 1,2-diacetate	176	C7H12O5	000102-62-5	83
4		Triacetin	218	C9H14O6	000102-76-1	64
5		1,2-Ethandiol, 1-(2-ethyl-1,3,2...	244	C10H17BO6	074793-27-4	33



Data Path : Z:\SVOASRV\HPCHEM1\BNA M\DATA\BM121219\  
 Data File : BM024096.D  
 Acq On : 13 Dec 2019 17:48  
 Operator : JU  
 Sample : K6167-17  
 Misc :  
 ALS Vial : 17 Sample Multiplier: 1

Instrument :  
 BNA\_M  
 ClientSampleID :  
 BFQX0

Quant Method : Z:\SVOASRV\HPCHEM1\BNA\_M\METHODS\SOM-EPA-BM112719MA.M  
 Quant Title : SVOA CALIBRATION

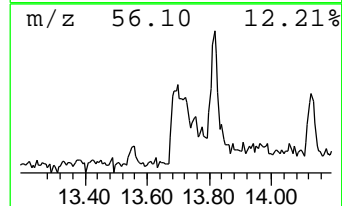
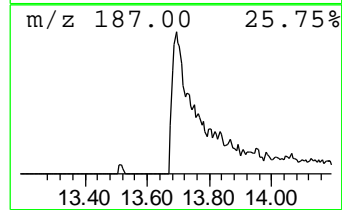
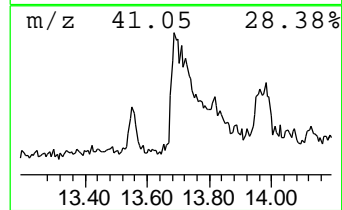
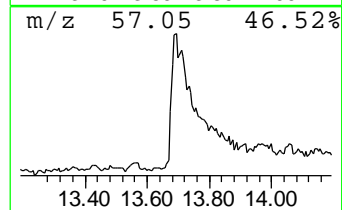
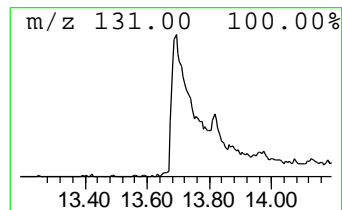
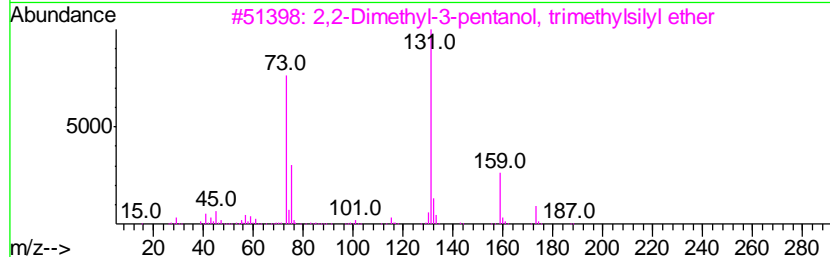
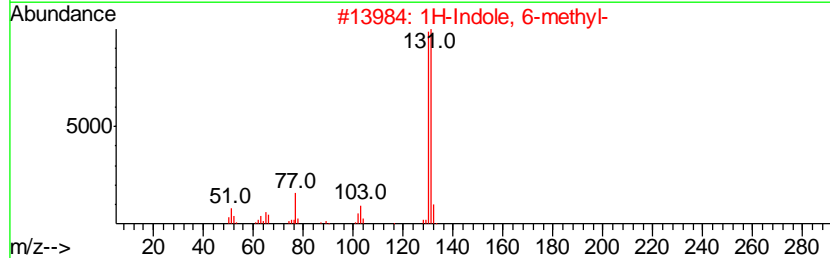
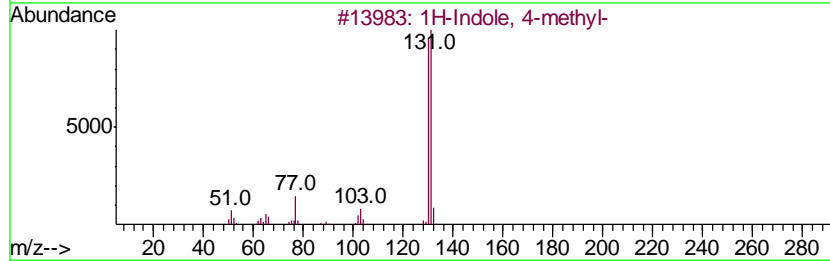
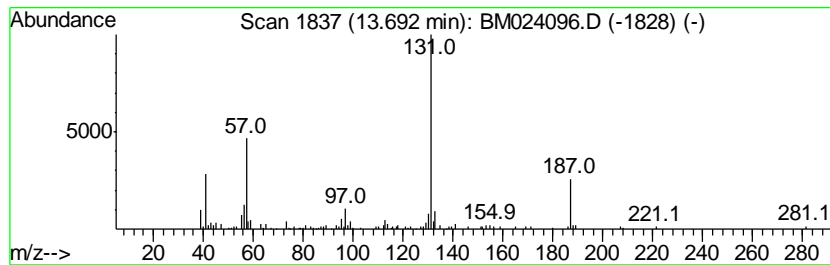
TIC Library : C:\DATABASE\NIST11.L  
 TIC Integration Parameters: LSCINT.P

\*\*\*\*\*  
 Peak Number 4 unknown-02 Concentration Rank 11

R.T.	EstConc	Area	Relative to ISTD	R.T.
13.69	2.84 ng/ul	480841	Acenaphthene-d10	14.13

Hit#	of	Tentative ID	MW	MolForm	CAS#	Qual
1	5	1H-Indole, 4-methyl-	131	C9H9N	016096-32-5	43
2		1H-Indole, 6-methyl-	131	C9H9N	003420-02-8	37
3		2,2-Dimethyl-3-pentanol, trimeth...	188	C10H24OSi	1000364-14-3	33
4		Decanoic acid, nonadecafluoro-	514	C10HF19O2	000335-76-2	28
5		1H-Benzimidazole, 2-(4-chloroph...	258	C14H11ClN2O	1000303-65-6	25



Data Path : Z:\SVOASRV\HPCHEM1\BNA M\DATA\BM121219\  
 Data File : BM024096.D  
 Acq On : 13 Dec 2019 17:48  
 Operator : JU  
 Sample : K6167-17  
 Misc :  
 ALS Vial : 17 Sample Multiplier: 1

Instrument :  
 BNA\_M  
 ClientSampleID :  
 BFQX0

Quant Method : Z:\SVOASRV\HPCHEM1\BNA\_M\METHODS\SOM-EPA-BM112719MA.M  
 Quant Title : SVOA CALIBRATION

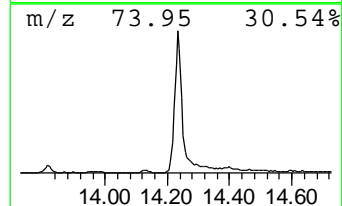
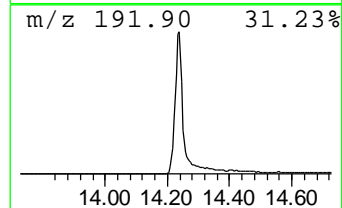
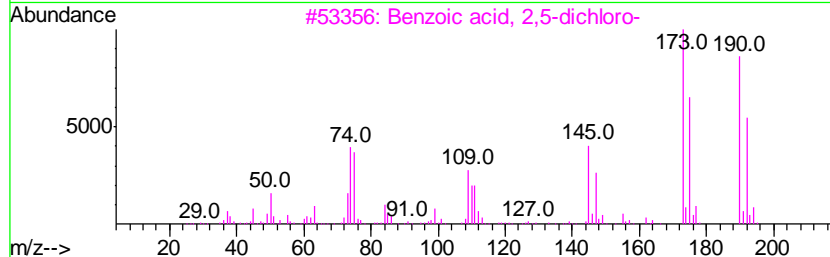
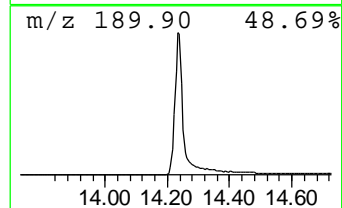
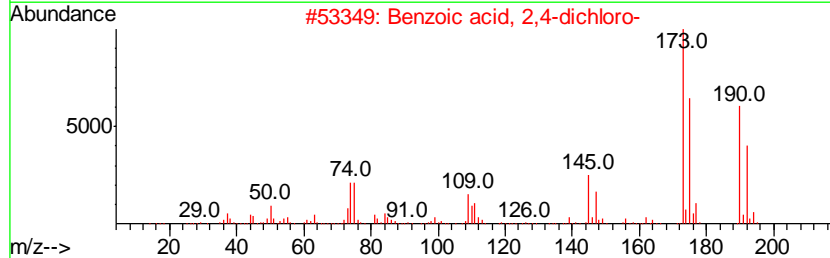
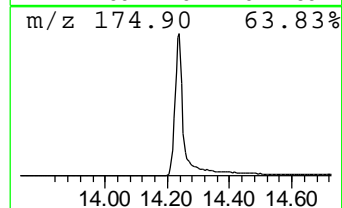
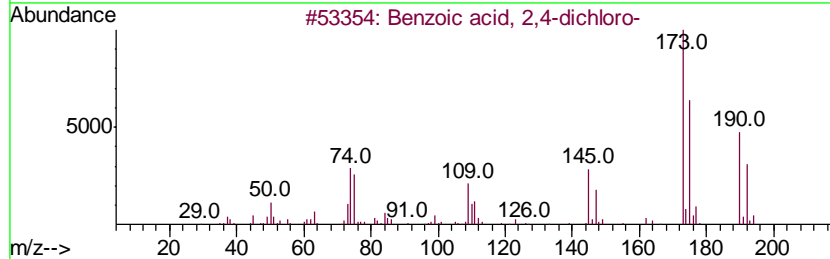
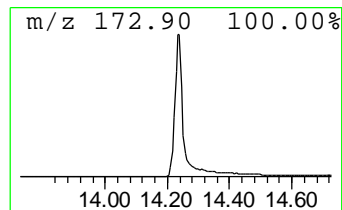
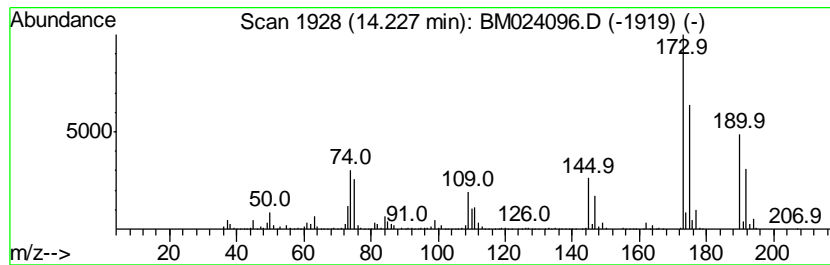
TIC Library : C:\DATABASE\NIST11.L  
 TIC Integration Parameters: LSCINT.P

\*\*\*\*\*  
 Peak Number 5 Benzoic acid, 2,4-dichloro- Concentration Rank 2

R.T.	EstConc	Area	Relative to ISTD	R.T.
14.23	29.59 ng/ul	5009690	Acenaphthene-d10	14.13

Hit#	of	Tentative ID	MW	MolForm	CAS#	Qual
1	5	Benzoic acid, 2,4-dichloro-	190	C7H4Cl2O2	000050-84-0	99
2		Benzoic acid, 2,4-dichloro-	190	C7H4Cl2O2	000050-84-0	97
3		Benzoic acid, 2,5-dichloro-	190	C7H4Cl2O2	000050-79-3	96
4		Benzoic acid, 3,4-dichloro-	190	C7H4Cl2O2	000051-44-5	96
5		Benzoic acid, 2,6-dichloro-	190	C7H4Cl2O2	000050-30-6	95





Data Path : Z:\SVOASRV\HPCHEM1\BNA M\DATA\BM121219\  
 Data File : BM024096.D  
 Acq On : 13 Dec 2019 17:48  
 Operator : JU  
 Sample : K6167-17  
 Misc :  
 ALS Vial : 17 Sample Multiplier: 1

Instrument :  
 BNA\_M  
 ClientSampleID :  
 BFQX0

Quant Method : Z:\SVOASRV\HPCHEM1\BNA\_M\METHODS\SOM-EPA-BM112719MA.M  
 Quant Title : SVOA CALIBRATION

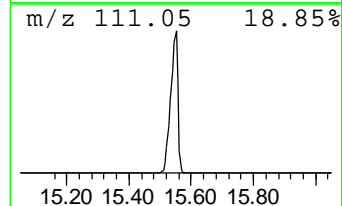
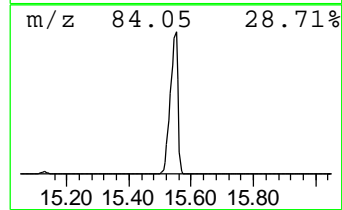
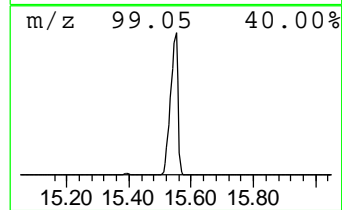
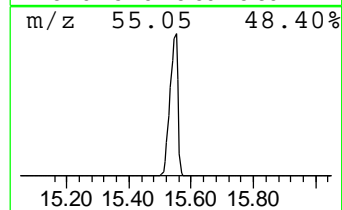
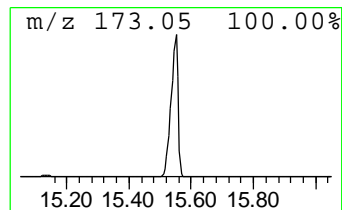
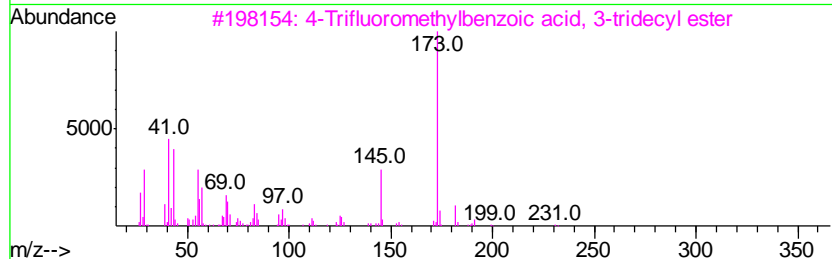
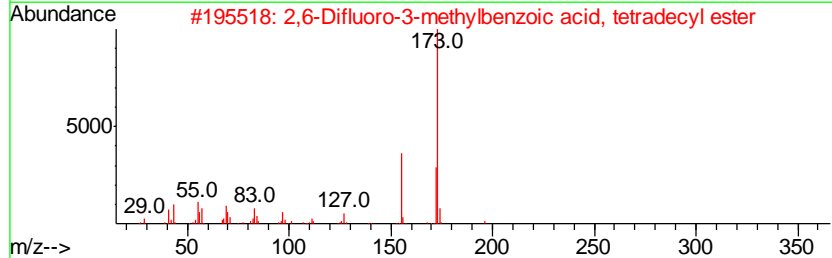
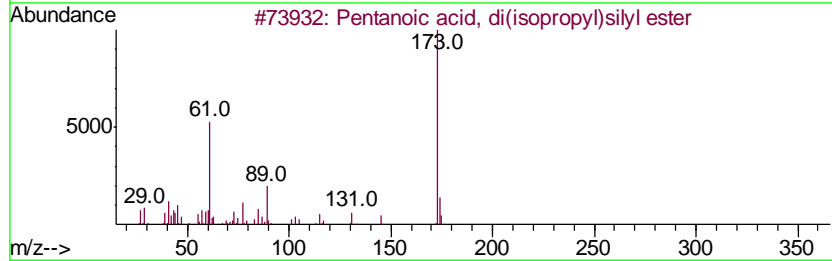
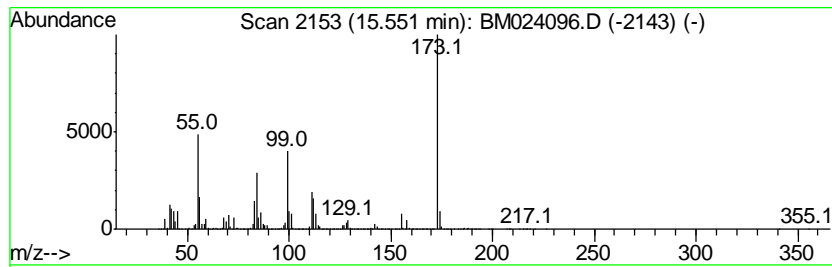
TIC Library : C:\DATABASE\NIST11.L  
 TIC Integration Parameters: LSCINT.P

\*\*\*\*\*  
 Peak Number 6 unknown-03 Concentration Rank 1

R.T.	EstConc	Area	Relative to ISTD	R.T.
15.55	291.01 ng/ul	56341900	Phenanthrene-d10	16.89

Hit#	of	Tentative ID	MW	MolForm	CAS#	Qual
1	5	Pentanoic acid, di(isopropyl)sil...	216	C11H24O2Si	1000279-48-0	35
2		2,6-Difluoro-3-methylbenzoic aci...	368	C22H34F2O2	1000338-85-1	32
3		4-Trifluoromethylbenzoic acid, 3...	372	C21H31F3O2	1000280-65-1	23
4		2,6-Difluoro-3-methylbenzoic aci...	396	C24H38F2O2	1000338-85-3	23
5		2,6-Difluoro-3-methylbenzoic aci...	354	C21H32F2O2	1000338-85-0	23



Data Path : Z:\SVOASRV\HPCHEM1\BNA M\DATA\BM121219\  
 Data File : BM024096.D  
 Acq On : 13 Dec 2019 17:48  
 Operator : JU  
 Sample : K6167-17  
 Misc :  
 ALS Vial : 17 Sample Multiplier: 1

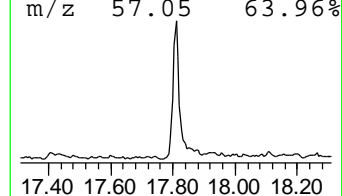
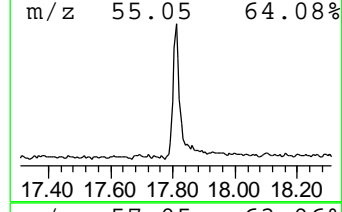
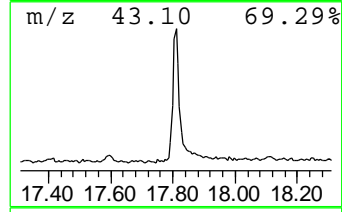
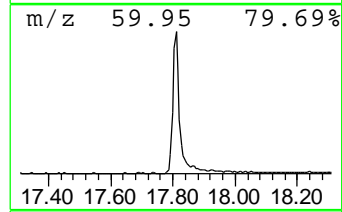
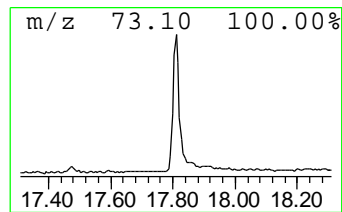
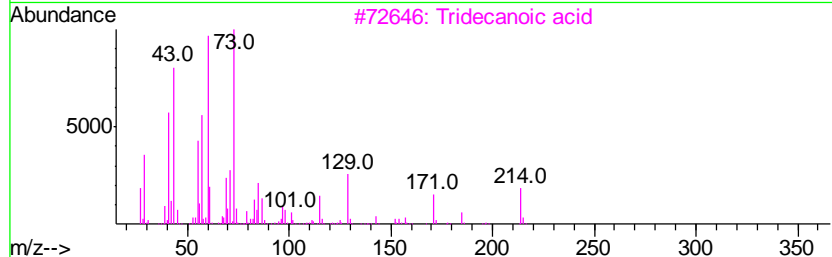
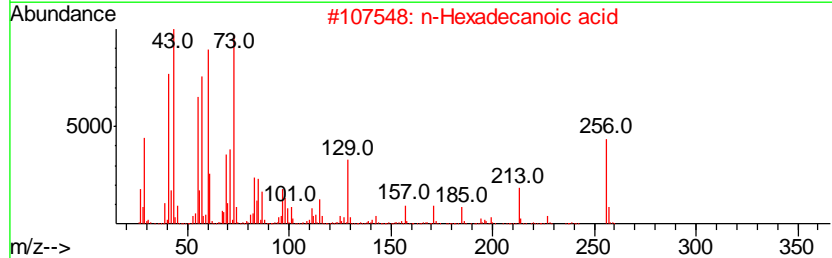
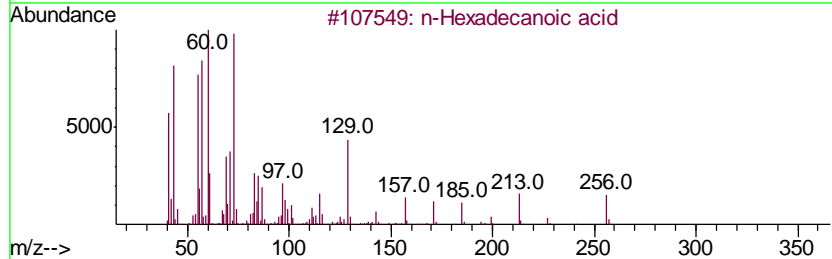
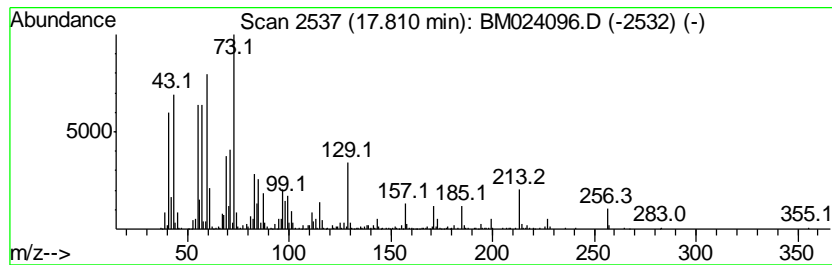
Instrument :  
 BNA\_M  
 ClientSampled :  
 BFQX0

Quant Method : Z:\SVOASRV\HPCHEM1\BNA\_M\METHODS\SOM-EPA-BM112719MA.M  
 Quant Title : SVOA CALIBRATION

TIC Library : C:\DATABASE\NIST11.L  
 TIC Integration Parameters: LSCINT.P

\*\*\*\*\*  
 Peak Number 7 n-Hexadecanoic acid Concentration Rank 4

R.T.	EstConc	Area	Relative to ISTD	R.T.		
17.81	7.29 ng/ul	1410490	Phenanthrene-d10	16.89		
Hit# of	5	Tentative ID	MW	MolForm	CAS#	Qual
1		n-Hexadecanoic acid	256	C16H32O2	000057-10-3	98
2		n-Hexadecanoic acid	256	C16H32O2	000057-10-3	98
3		Tridecanoic acid	214	C13H26O2	000638-53-9	90
4		Octadecanoic acid	284	C18H36O2	000057-11-4	87
5		Pentadecanoic acid	242	C15H30O2	001002-84-2	81



Data Path : Z:\SVOASRV\HPCHEM1\BNA M\DATA\BM121219\  
 Data File : BM024096.D  
 Acq On : 13 Dec 2019 17:48  
 Operator : JU  
 Sample : K6167-17  
 Misc :  
 ALS Vial : 17 Sample Multiplier: 1

Instrument :  
 BNA\_M  
 ClientSampleId :  
 BFQX0

Quant Method : Z:\SVOASRV\HPCHEM1\BNA\_M\METHODS\SOM-EPA-BM112719MA.M  
 Quant Title : SVOA CALIBRATION

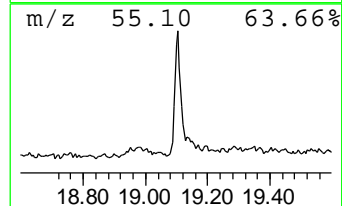
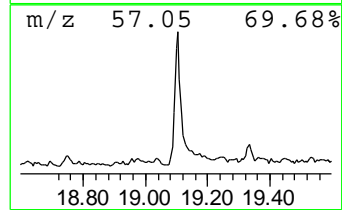
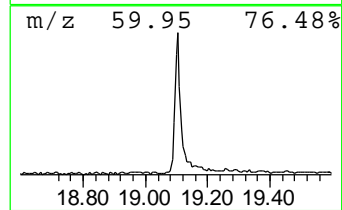
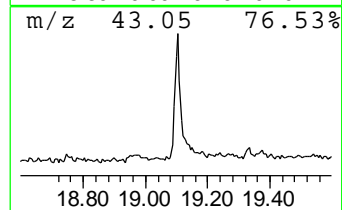
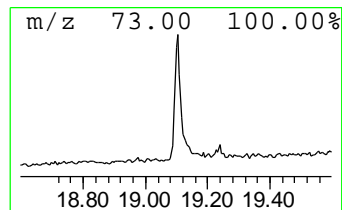
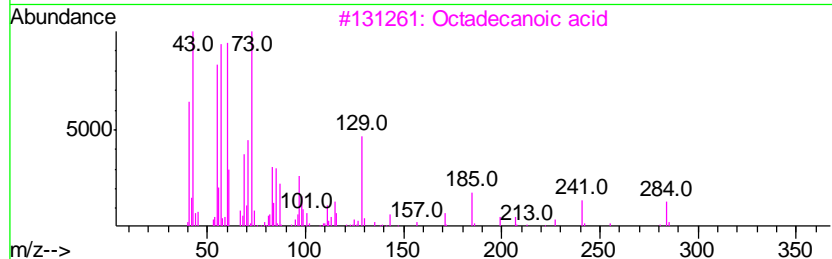
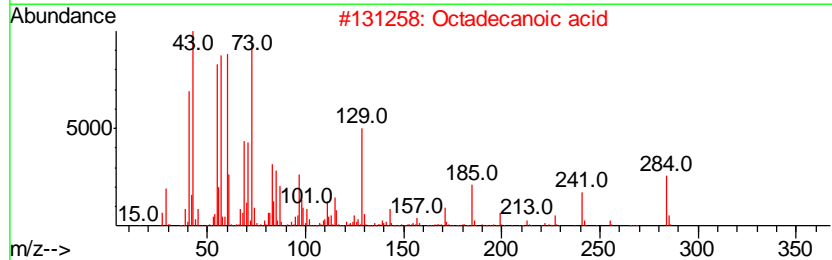
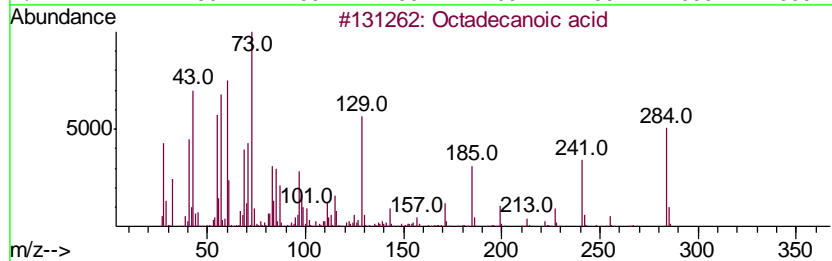
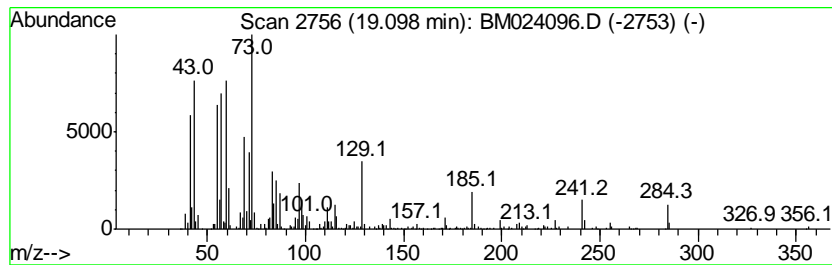
TIC Library : C:\DATABASE\NIST11.L  
 TIC Integration Parameters: LSCINT.P

\*\*\*\*\*  
 Peak Number 8 Octadecanoic acid Concentration Rank 9

R.T.	EstConc	Area	Relative to ISTD	R.T.
19.10	3.32 ng/ul	730884	Chrysene-d12	21.09

Hit#	of	Tentative ID	MW	MolForm	CAS#	Qual
1	5	Octadecanoic acid	284	C18H36O2	000057-11-4	99
2		Octadecanoic acid	284	C18H36O2	000057-11-4	99
3		Octadecanoic acid	284	C18H36O2	000057-11-4	99
4		Octadecanoic acid	284	C18H36O2	000057-11-4	95
5		Tetradecanoic acid	228	C14H28O2	000544-63-8	87



Data Path : Z:\SVOASRV\HPCHEM1\BNA M\DATA\BM121219\  
 Data File : BM024096.D  
 Acq On : 13 Dec 2019 17:48  
 Operator : JU  
 Sample : K6167-17  
 Misc :  
 ALS Vial : 17 Sample Multiplier: 1

Instrument :  
 BNA\_M  
 ClientSampled :  
 BFQX0

Quant Method : Z:\SVOASRV\HPCHEM1\BNA\_M\METHODS\SOM-EPA-BM112719MA.M  
 Quant Title : SVOA CALIBRATION

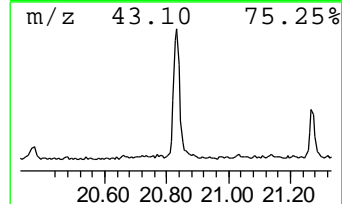
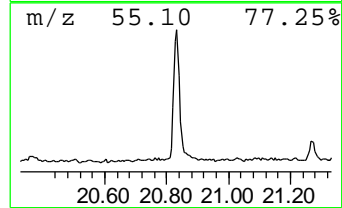
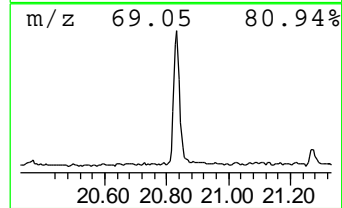
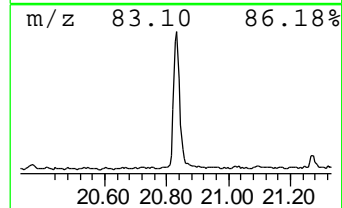
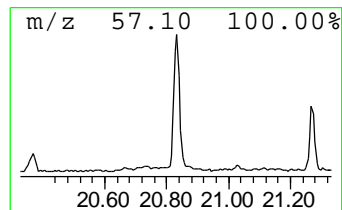
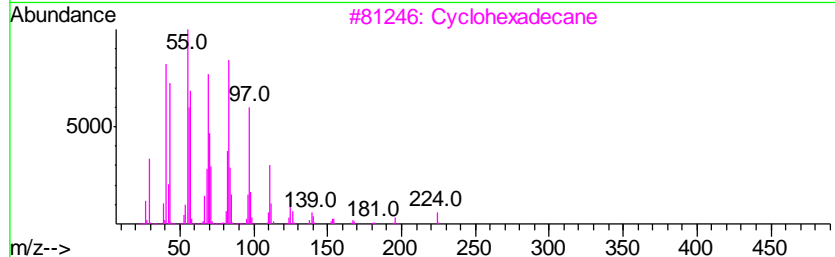
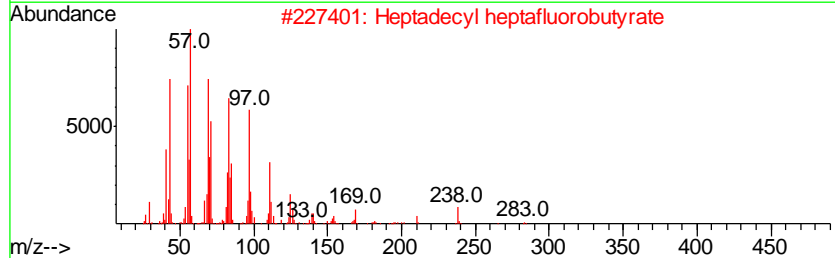
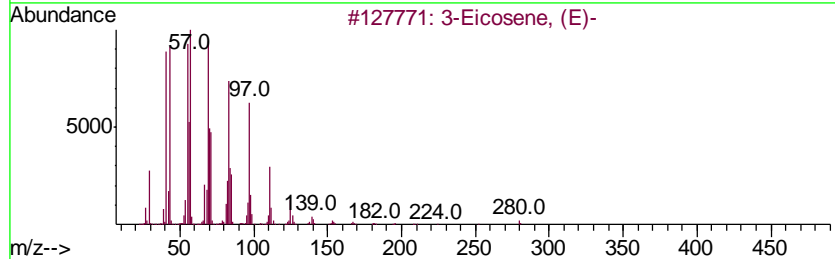
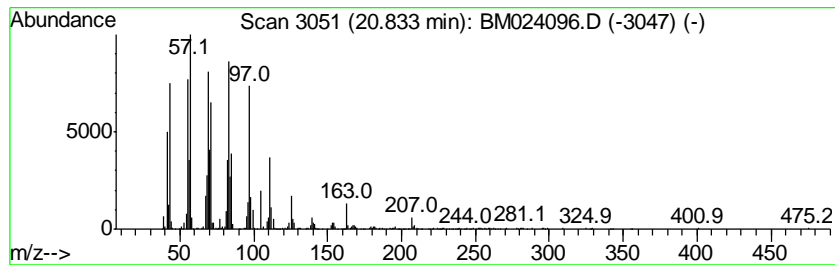
TIC Library : C:\DATABASE\NIST11.L  
 TIC Integration Parameters: LSCINT.P

\*\*\*\*\*  
 Peak Number 9 (DEL) Alkane: Cyclic20.83 Concentration Rank 5

R.T.	EstConc	Area	Relative to ISTD	R.T.
20.83	5.47 ng/ul	1205290	Chrysene-d12	21.09

Hit#	of	Tentative ID	MW	MolForm	CAS#	Qual
1	5	3-Eicosene, (E)-	280	C20H40	074685-33-9	99
2		Heptadecyl heptafluorobutyrate	452	C21H35F7O2	959085-66-6	94
3		Cyclohexadecane	224	C16H32	000295-65-8	93
4		Trichloroacetic acid, hexadecyl ...	386	C18H33Cl3O2	074339-54-1	91
5		17-Pentatriacontene	491	C35H70	006971-40-0	91



Data Path : Z:\SVOASRV\HPCHEM1\BNA M\DATA\BM121219\  
 Data File : BM024096.D  
 Acq On : 13 Dec 2019 17:48  
 Operator : JU  
 Sample : K6167-17  
 Misc :  
 ALS Vial : 17 Sample Multiplier: 1

Instrument :  
 BNA\_M  
 ClientSampleID :  
 BFQX0

Quant Method : Z:\SVOASRV\HPCHEM1\BNA\_M\METHODS\SOM-EPA-BM112719MA.M  
 Quant Title : SVOA CALIBRATION

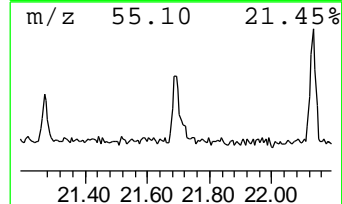
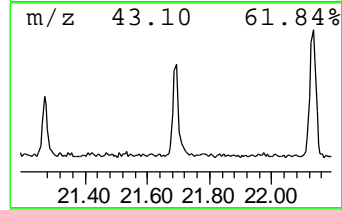
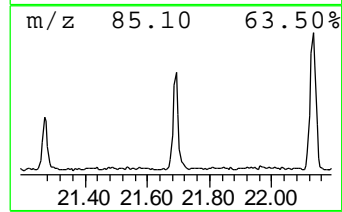
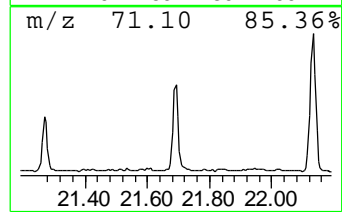
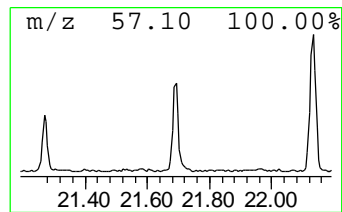
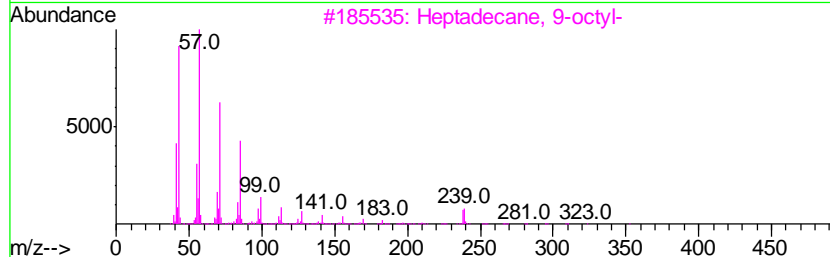
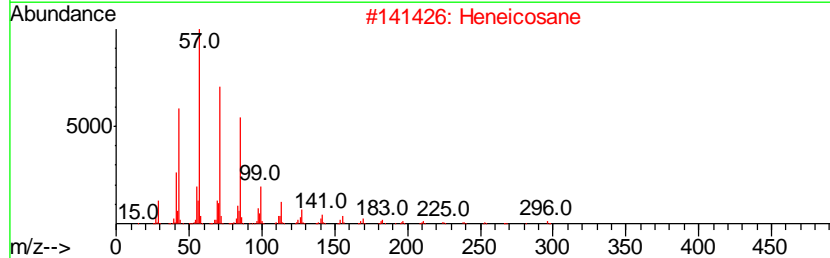
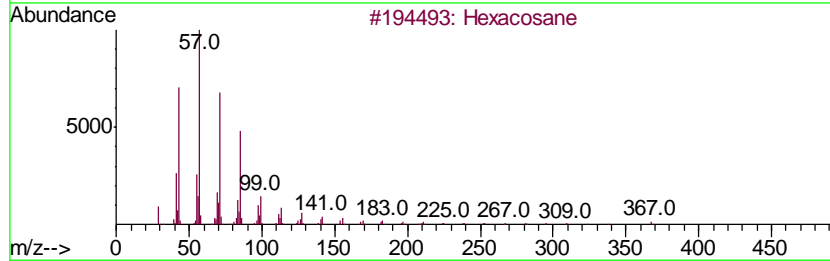
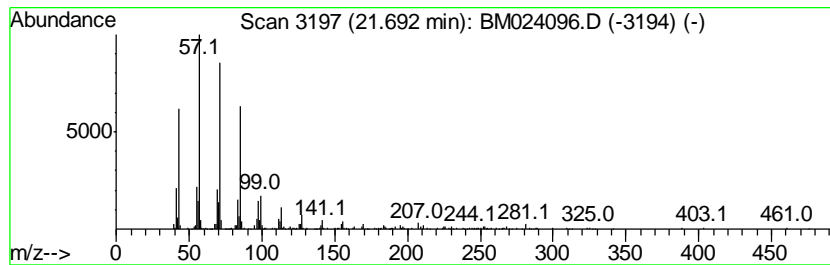
TIC Library : C:\DATABASE\NIST11.L  
 TIC Integration Parameters: LSCINT.P

\*\*\*\*\*  
 Peak Number 10 (DEL) Alkane: Straight-Chai... Concentration Rank 13

R.T.	EstConc	Area	Relative to ISTD	R.T.
21.69	2.19 ng/ul	483188	Chrysene-d12	21.09

Hit#	of	Tentative ID	MW	MolForm	CAS#	Qual
1	5	Hexacosane	366	C26H54	000630-01-3	91
2		Heneicosane	296	C21H44	000629-94-7	91
3		Heptadecane, 9-octyl-	352	C25H52	007225-64-1	91
4		Heneicosane, 11-(1-ethylpropyl)-	366	C26H54	055282-11-6	91
5		Hexadecane	226	C16H34	000544-76-3	83



Data Path : Z:\SVOASRV\HPCHEM1\BNA M\DATA\BM121219\  
 Data File : BM024096.D  
 Acq On : 13 Dec 2019 17:48  
 Operator : JU  
 Sample : K6167-17  
 Misc :  
 ALS Vial : 17 Sample Multiplier: 1

Instrument :  
 BNA\_M  
 ClientSampleID :  
 BFQX0

Quant Method : Z:\SVOASRV\HPCHEM1\BNA\_M\METHODS\SOM-EPA-BM112719MA.M  
 Quant Title : SVOA CALIBRATION

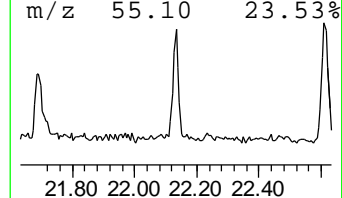
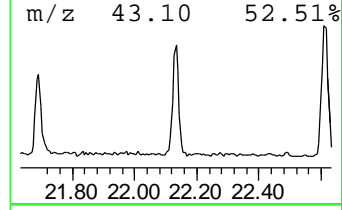
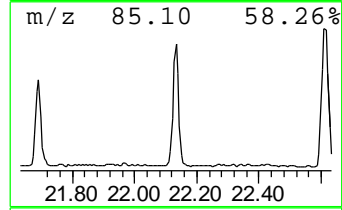
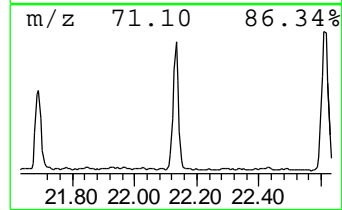
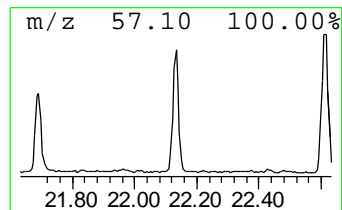
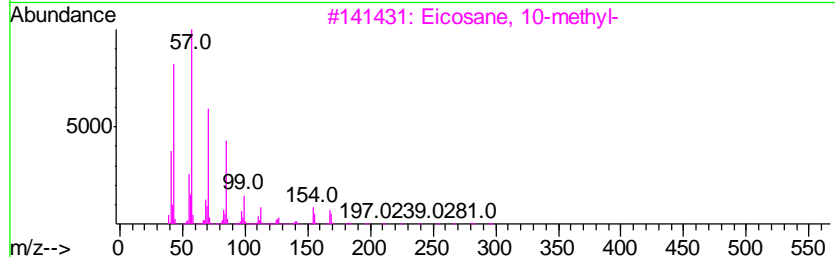
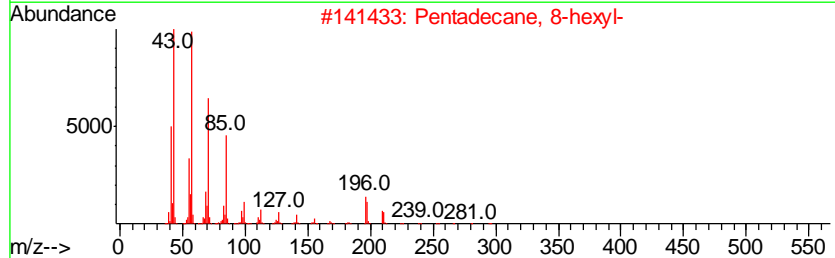
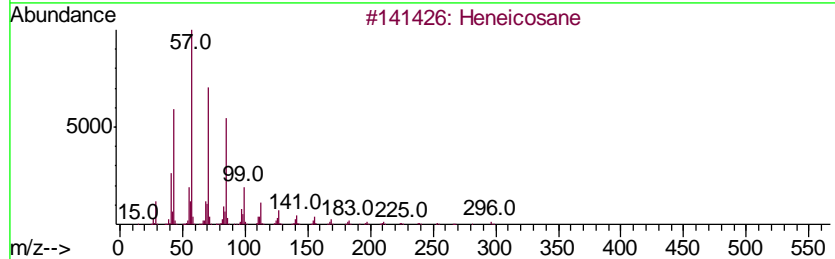
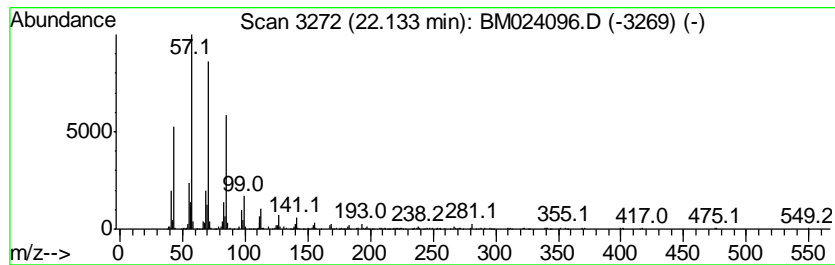
TIC Library : C:\DATABASE\NIST11.L  
 TIC Integration Parameters: LSCINT.P

\*\*\*\*\*  
 Peak Number 11 (DEL) Alkane: Straight-Chai... Concentration Rank 10

R.T.	EstConc	Area	Relative to ISTD	R.T.
22.13	2.97 ng/ul	654726	Chrysene-d12	21.09

Hit#	of	Tentative ID	MW	MolForm	CAS#	Qual
1	5	Heneicosane	296	C21H44	000629-94-7	96
2		Pentadecane, 8-hexyl-	296	C21H44	013475-75-7	94
3		Eicosane, 10-methyl-	296	C21H44	054833-23-7	94
4		Heneicosane	296	C21H44	000629-94-7	93
5		Heptadecane, 2,6,10,15-tetramethyl-	296	C21H44	054833-48-6	93



Data Path : Z:\SVOASRV\HPCHEM1\BNA M\DATA\BM121219\  
 Data File : BM024096.D  
 Acq On : 13 Dec 2019 17:48  
 Operator : JU  
 Sample : K6167-17  
 Misc :  
 ALS Vial : 17 Sample Multiplier: 1

Instrument :  
 BNA\_M  
 ClientSampleId :  
 BFQX0

Quant Method : Z:\SVOASRV\HPCHEM1\BNA\_M\METHODS\SOM-EPA-BM112719MA.M  
 Quant Title : SVOA CALIBRATION

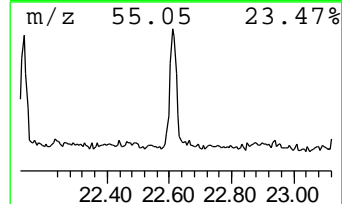
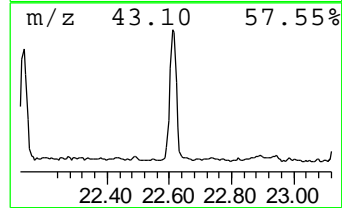
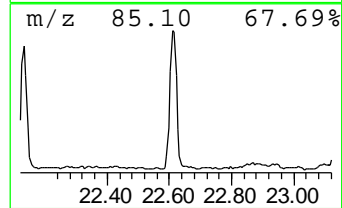
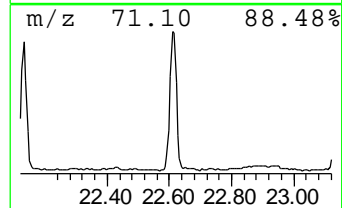
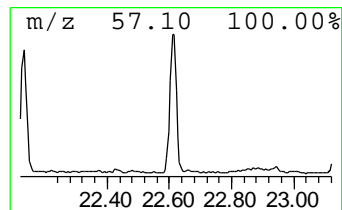
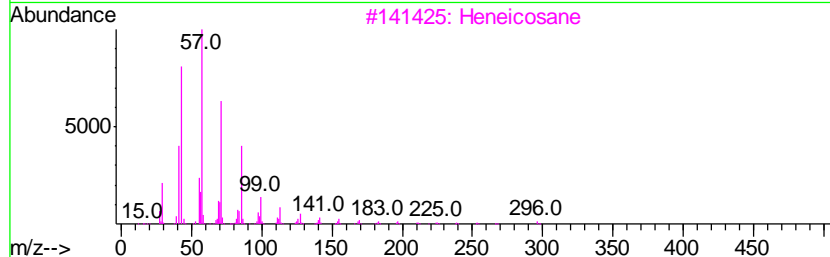
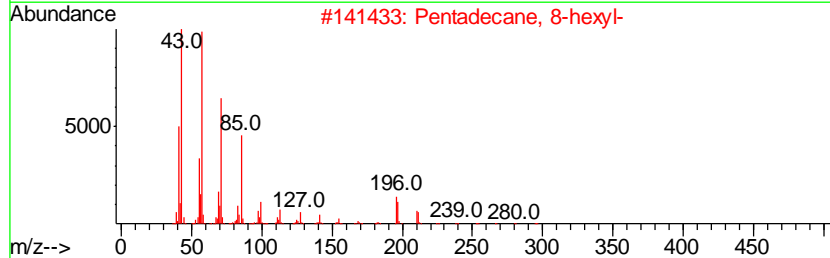
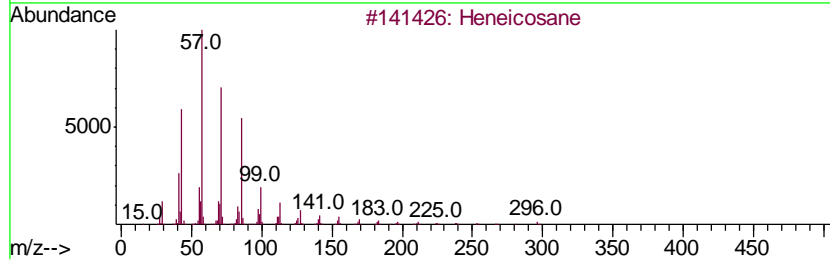
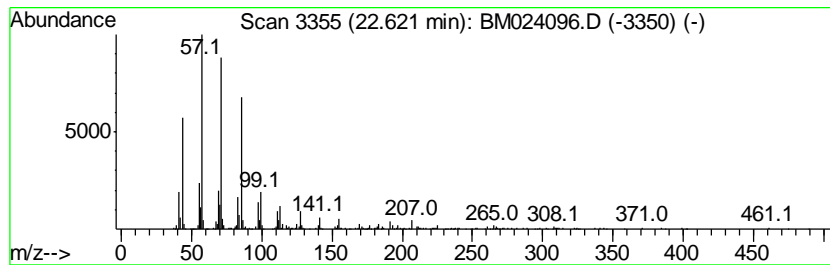
TIC Library : C:\DATABASE\NIST11.L  
 TIC Integration Parameters: LSCINT.P

\*\*\*\*\*  
 Peak Number 12 (DEL) Alkane: Straight-Chai... Concentration Rank 8

R.T.	EstConc	Area	Relative to ISTD	R.T.
22.62	3.54 ng/ul	848590	Perylene-d12	23.23

Hit#	of	Tentative ID	MW	MolForm	CAS#	Qual
1	5	Heneicosane	296	C21H44	000629-94-7	91
2		Pentadecane, 8-hexyl-	296	C21H44	013475-75-7	91
3		Heneicosane	296	C21H44	000629-94-7	91
4		Heptadecane, 9-octyl-	352	C25H52	007225-64-1	91
5		2-methyloctacosane	408	C29H60	1000376-72-8	91



Data Path : Z:\SVOASRV\HPCHEM1\BNA M\DATA\BM121219\  
 Data File : BM024096.D  
 Acq On : 13 Dec 2019 17:48  
 Operator : JU  
 Sample : K6167-17  
 Misc :  
 ALS Vial : 17 Sample Multiplier: 1

Instrument :  
 BNA\_M  
 ClientSampleID :  
 BFQX0

Quant Method : Z:\SVOASRV\HPCHEM1\BNA\_M\METHODS\SOM-EPA-BM112719MA.M  
 Quant Title : SVOA CALIBRATION

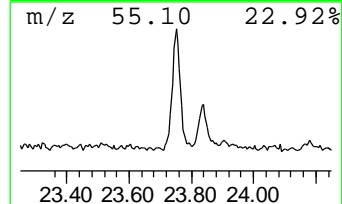
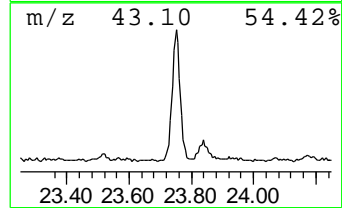
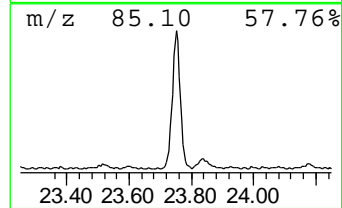
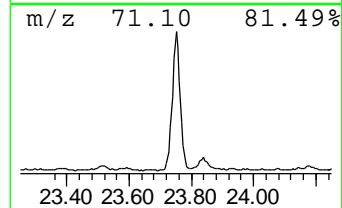
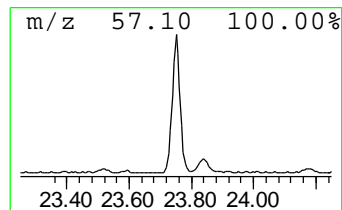
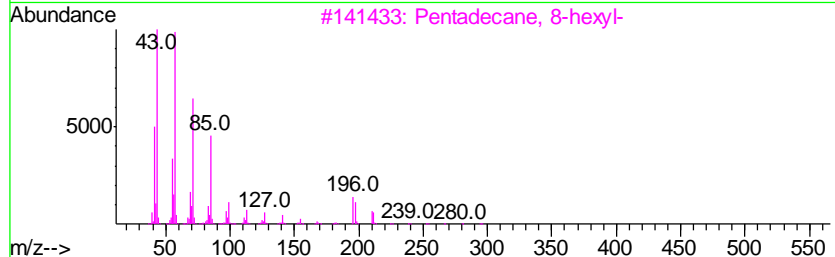
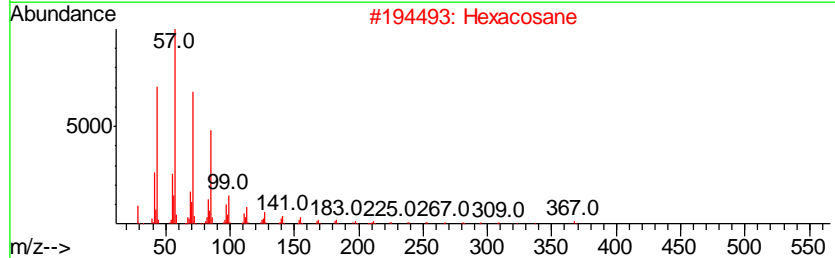
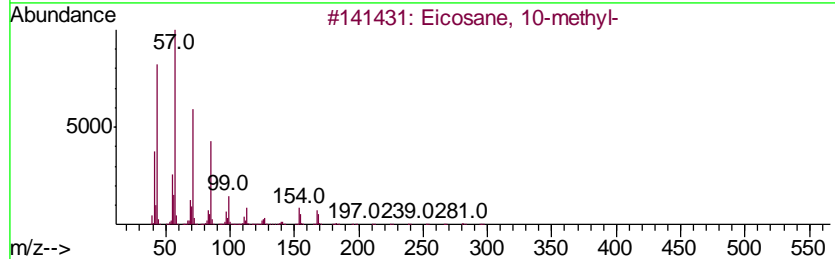
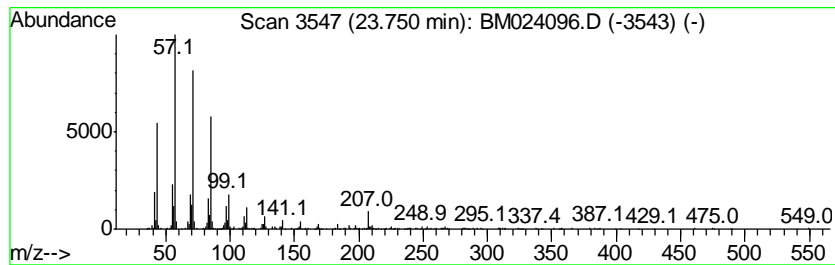
TIC Library : C:\DATABASE\NIST11.L  
 TIC Integration Parameters: LSCINT.P

\*\*\*\*\*  
 Peak Number 13 (DEL) Alkane: Straight-Chai... Concentration Rank 6

R.T.	EstConc	Area	Relative to ISTD	R.T.
23.75	3.81 ng/ul	912929	Perylene-d12	23.23

Hit#	of	Tentative ID	MW	MolForm	CAS#	Qual
1	5	Eicosane, 10-methyl-	296	C21H44	054833-23-7	93
2		Hexacosane	366	C26H54	000630-01-3	90
3		Pentadecane, 8-hexyl-	296	C21H44	013475-75-7	90
4		Hexadecane	226	C16H34	000544-76-3	90
5		Heneicosane	296	C21H44	000629-94-7	90





Data Path : Z:\SVOASRV\HPCHEM1\BNA\_M\DATA\BM121219\  
 Data File : BM024096.D  
 Acq On : 13 Dec 2019 17:48  
 Operator : JU  
 Sample : K6167-17  
 Misc :  
 ALS Vial : 17 Sample Multiplier: 1

Instrument :  
 BNA\_M  
 ClientSampleId :  
 BFQX0

Quant Method : Z:\SVOASRV\HPCHEM1\BNA\_M\METHODS\SOM-EPA-BM112719MA.M  
 Quant Title : SVOA CALIBRATION

TIC Library : C:\DATABASE\NIST11.L  
 TIC Integration Parameters: LSCINT.P

TIC Top Hit name	RT	EstConc	Units	Response	--Internal Standard--			
					#	RT	Resp	Conc
Hexanoic acid, 3,...	9.10	2.2	ng/ul	289676	2	10.24	2592570	20.0
unknown-01	10.65	8.1	ng/ul	1049280	2	10.24	2592570	20.0
Triacetin	12.13	3.8	ng/ul	492309	2	10.24	2592570	20.0
unknown-02	13.69	2.8	ng/ul	480841	3	14.13	3385840	20.0
Benzoic acid, 2,4...	14.23	29.6	ng/ul	5009690	3	14.13	3385840	20.0
unknown-03	15.55	291.0	ng/ul	56341900	4	16.89	3872210	20.0
n-Hexadecanoic acid	17.81	7.3	ng/ul	1410490	4	16.89	3872210	20.0
Octadecanoic acid	19.10	3.3	ng/ul	730884	5	21.09	4403060	20.0
(DEL) Alkane: Cyc...	20.83	5.5	ng/ul	1205290	5	21.09	4403060	20.0
(DEL) Alkane: Str...	21.69	2.2	ng/ul	483188	5	21.09	4403060	20.0
(DEL) Alkane: Str...	22.13	3.0	ng/ul	654726	5	21.09	4403060	20.0
(DEL) Alkane: Str...	22.62	3.5	ng/ul	848590	6	23.23	4789030	20.0
(DEL) Alkane: Str...	23.75	3.8	ng/ul	912929	6	23.23	4789030	20.0