

Data Path : Z:\svoasrv\HPCHEM1\BNA\_M\Data\BM121324\  
 Data File : BM048986.D  
 Acq On : 13 Dec 2024 17:41  
 Operator : RC/JU  
 Sample : P5228-14  
 Misc :  
 ALS Vial : 14 Sample Multiplier: 1

Instrument :  
 BNA\_M  
 ClientSampleId :  
 E29S9

Integration Parameters: LSCINT.P

Integrator: RTE  
 Smoothing : OFF Filtering: 5  
 Sampling : 1 Min Area: 0.1 % of largest Peak  
 Start Thrs: 0.2 Max Peaks: 100  
 Stop Thrs : 0 Peak Location: TOP

If leading or trailing edge < 100 prefer < Baseline drop else tangent >  
 Peak separation: 5

Method : Z:\svoasrv\HPCHEM1\BNA\_M\Methods\SFAM-EPA-BM121124.MA.M  
 Title : SVOA CALIBRATION

Signal : TIC: BM048986.D\data.ms

peak #	R.T. min	first scan	max scan	last scan	PK TY	peak height	corr. area	corr. % max.	% of total
1	3.152	25	28	35	rVB	51081	64297	1.95%	0.197%
2	3.552	92	96	108	rBV	160310	256987	7.80%	0.787%
3	3.816	139	141	142	rBV2	4458	3392	0.10%	0.010%
4	3.857	145	148	155	rVB	12534	19535	0.59%	0.060%
5	4.363	229	234	243	rVB	598139	856306	26.00%	2.623%
6	4.628	276	279	283	rVB5	3850	5754	0.17%	0.018%
7	4.757	296	301	307	rVB2	25604	40333	1.22%	0.124%
8	5.581	438	441	444	rBV4	2504	3648	0.11%	0.011%
9	5.681	455	458	460	rBV3	2681	3559	0.11%	0.011%
10	6.175	536	542	546	rVV7	3465	7150	0.22%	0.022%
11	6.251	553	555	559	rBV4	2906	3339	0.10%	0.010%
12	6.346	567	571	573	rVB3	4140	4135	0.13%	0.013%
13	6.757	633	641	653	rBV	209264	340865	10.35%	1.044%
14	6.916	662	668	681	rBV	653883	1008119	30.61%	3.088%
15	7.110	694	701	714	rBV	682969	1052969	31.98%	3.226%
16	7.216	717	719	721	rVV3	4111	4306	0.13%	0.013%
17	7.569	772	779	787	rBV	607691	915702	27.81%	2.805%
18	7.640	787	791	793	rBV5	2421	3491	0.11%	0.011%
19	7.745	807	809	812	rBV4	2717	3527	0.11%	0.011%
20	8.275	892	899	914	rBV	546763	853428	25.92%	2.615%
21	8.710	967	973	985	rBV	649326	1021011	31.00%	3.128%
22	8.792	985	987	991	rVB5	3706	4610	0.14%	0.014%
23	8.851	991	997	1000	rBV7	4126	7266	0.22%	0.022%
24	8.892	1003	1004	1009	rVB5	3070	3305	0.10%	0.010%
25	8.945	1009	1013	1017	rBV5	2790	4397	0.13%	0.013%
26	9.428	1088	1095	1104	rBV	420644	657765	19.97%	2.015%
27	9.963	1179	1186	1200	rBV	731112	1184882	35.98%	3.630%
28	10.333	1242	1249	1260	rBV	746833	1182775	35.92%	3.624%
29	10.475	1265	1273	1292	rBV	570617	1010413	30.68%	3.096%
30	13.627	1802	1809	1819	rBV	1254869	1656215	50.29%	5.074%
31	13.892	1847	1854	1865	rBV	1462077	2085925	63.34%	6.390%
32	14.204	1899	1907	1915	rBV	992727	1394703	42.35%	4.273%
33	14.269	1917	1918	1925	rVB5	2580	3555	0.11%	0.011%
34	14.416	1935	1943	1952	rBV	74121	148627	4.51%	0.455%
35	14.645	1978	1982	1984	rBV3	5399	6637	0.20%	0.020%
36	15.204	2070	2077	2086	rBV	1929584	2670761	81.10%	8.182%

Data Path : Z:\svoasrv\HPCHEM1\BNA\_M\Data\BM121324\  
 Data File : BM048986.D  
 Acq On : 13 Dec 2024 17:41  
 Operator : RC/JU  
 Sample : P5228-14  
 Misc :  
 ALS Vial : 14 Sample Multiplier: 1

Instrument :  
 BNA\_M  
 ClientSampleId :  
 E29S9

Integration Parameters: LSCINT.P

Integrator: RTE  
 Smoothing : OFF Filtering: 5  
 Sampling : 1 Min Area: 0.1 % of largest Peak  
 Start Thrs: 0.2 Max Peaks: 100  
 Stop Thrs : 0 Peak Location: TOP

If leading or trailing edge < 100 prefer < Baseline drop else tangent >  
 Peak separation: 5

Method : Z:\svoasrv\HPCHEM1\BNA\_M\Methods\SFAM-EPA-BM121124.MA.M  
 Title : SVOA CALIBRATION

37	15.321	2091	2097	2104	rVV	366305	477696	14.51%	1.463%
38	15.374	2104	2106	2111	rVV5	6052	8749	0.27%	0.027%
39	15.445	2113	2118	2123	rVB6	6210	11199	0.34%	0.034%
40	15.580	2133	2141	2148	rBV	20657	33180	1.01%	0.102%
41	16.745	2334	2339	2342	rVB3	5636	6428	0.20%	0.020%
42	16.951	2368	2374	2384	rBV2	1112997	1479519	44.93%	4.533%
43	17.051	2384	2391	2405	rBV	2262721	2892177	87.83%	8.860%
44	17.874	2526	2531	2536	rBV8	10355	16525	0.50%	0.051%
45	18.915	2703	2708	2713	rBV5	19391	28277	0.86%	0.087%
46	18.986	2716	2720	2724	rVV2	15527	21464	0.65%	0.066%
47	19.051	2728	2731	2733	rBV4	3463	4124	0.13%	0.013%
48	19.162	2747	2750	2756	rBV6	6526	11515	0.35%	0.035%
49	19.351	2775	2782	2792	rBV	2647572	3293064	100.00%	10.089%
50	21.174	3087	3092	3105	rBV	1163106	1458874	44.30%	4.469%
51	23.791	3529	3537	3550	rBV	1389458	2903284	88.16%	8.894%
52	23.980	3562	3569	3579	rBV2	696802	1501583	45.60%	4.600%

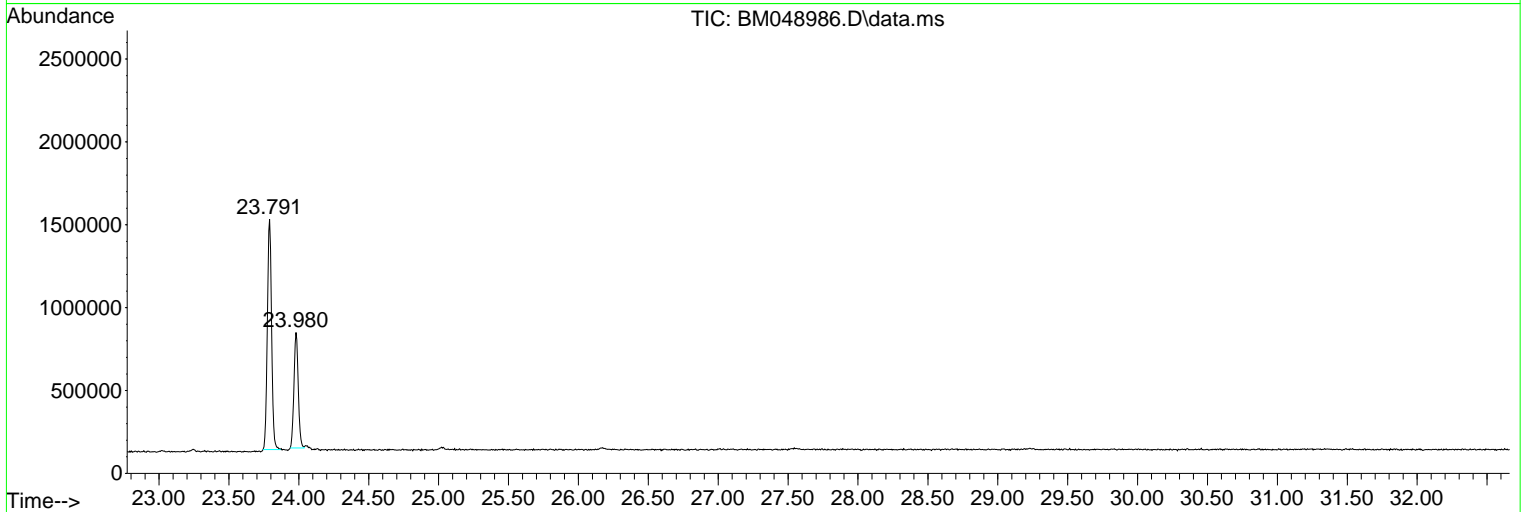
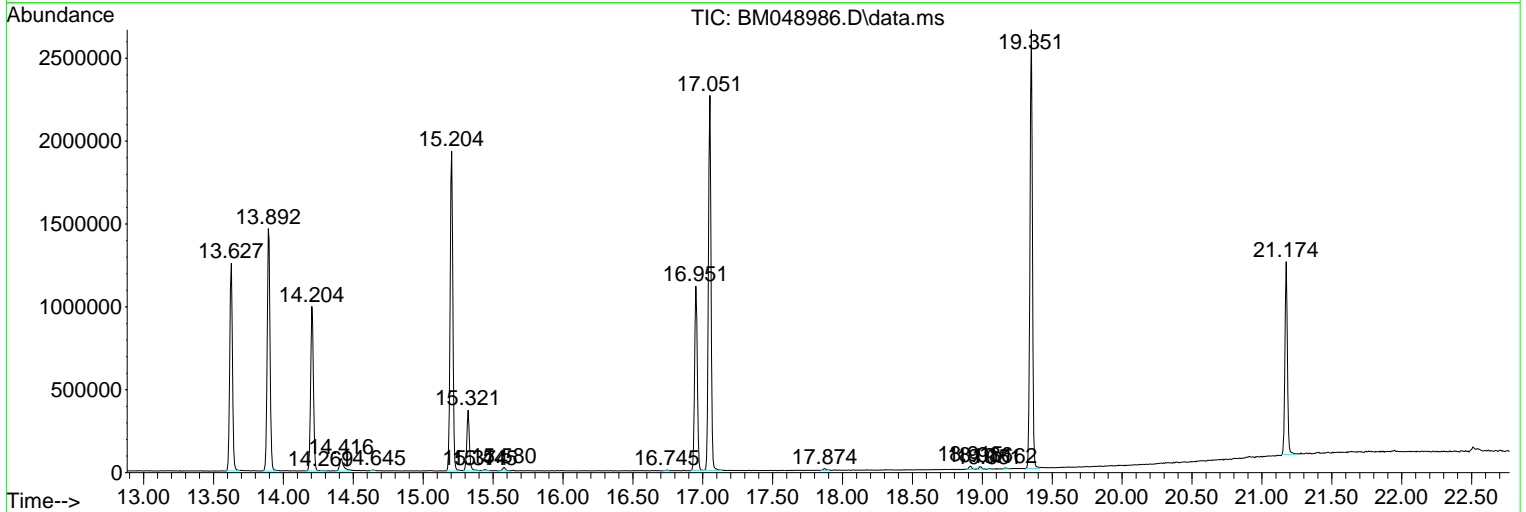
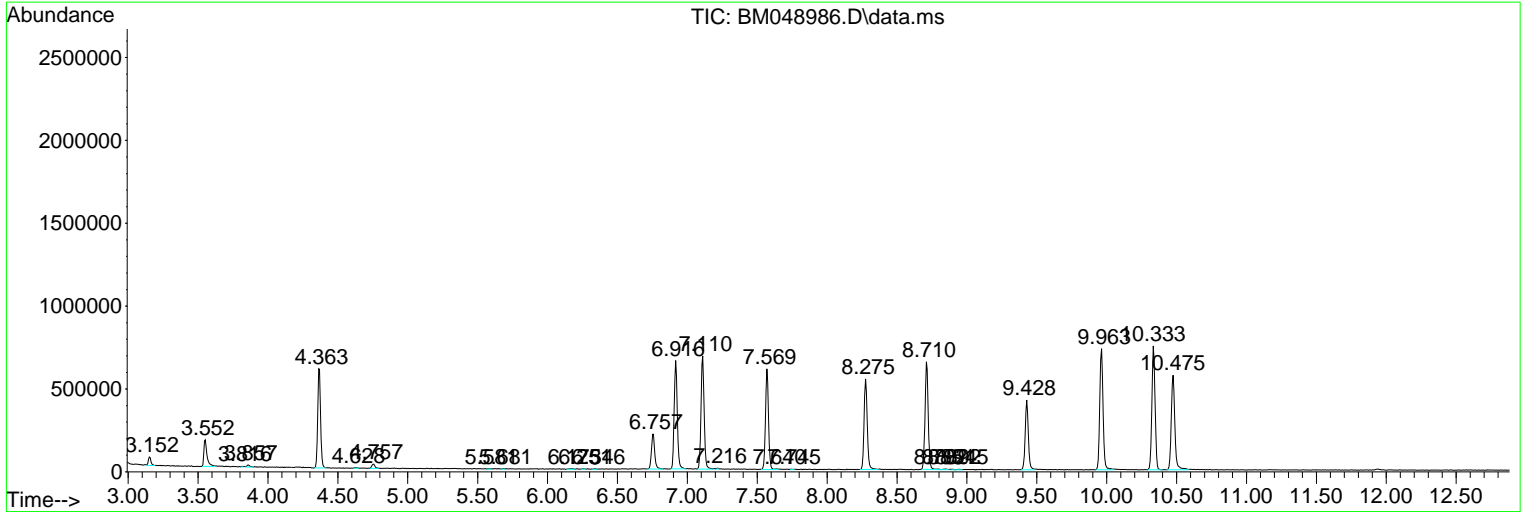
Sum of corrected areas: 32641347

Data Path : Z:\svoasrv\HPCHEM1\BNA\_M\Data\BM121324\  
 Data File : BM048986.D  
 Acq On : 13 Dec 2024 17:41  
 Operator : RC/JU  
 Sample : P5228-14  
 Misc :  
 ALS Vial : 14 Sample Multiplier: 1

**Instrument :**  
 BNA\_M  
**ClientSampleId :**  
 E29S9

Quant Method : Z:\svoasrv\HPCHEM1\BNA\_M\Methods\SFAM-EPA-BM121124.MA.M  
 Quant Title : SVOA CALIBRATION

TIC Library : C:\Database\NIST20.L  
 TIC Integration Parameters: LSCINT.P



Library Search Compound Report

Data Path : Z:\svoasrv\HPCHEM1\BNA\_M\Data\BM121324\  
Data File : BM048986.D  
Acq On : 13 Dec 2024 17:41  
Operator : RC/JU  
Sample : P5228-14  
Misc :  
ALS Vial : 14 Sample Multiplier: 1

Instrument :  
BNA\_M  
ClientSampleId :  
E29S9

Quant Method : Z:\svoasrv\HPCHEM1\BNA\_M\Methods\SFAM-EPA-BM121124.MA.M  
Quant Title : SVOA CALIBRATION

TIC Library : C:\Database\NIST20.L  
TIC Integration Parameters: LSCINT.P

No Library Search Compounds Detected

\*\*\*\*\*

Data Path : Z:\svoasrv\HPCHEM1\BNA\_M\Data\BM121324\  
Data File : BM048986.D  
Acq On : 13 Dec 2024 17:41  
Operator : RC/JU  
Sample : P5228-14  
Misc :  
ALS Vial : 14 Sample Multiplier: 1

Instrument :  
BNA\_M  
ClientSampleId :  
E29S9

Quant Method : Z:\svoasrv\HPCHEM1\BNA\_M\Methods\SFAM-EPA-BM121124.MA.M  
Quant Title : SVOA CALIBRATION

TIC Library : C:\Database\NIST0.L  
TIC Integration Parameters: LSCINT.P

TIC Top Hit name	RT	EstConc	Units	Response	#	RT	Resp	Conc
------------------	----	---------	-------	----------	---	----	------	------

-----