

Data Path : Z:\HPCHEM1\BNA M\DATA\BM121615\
 Data File : BM003590.D
 Acq On : 16 Dec 2015 22:43
 Operator : UM/IZ
 Sample : G4767-14
 Misc :
 ALS Vial : 17 Sample Multiplier: 1

Instrument :
 BNA_M
ClientSampleId :
 D9N36

Manual Integrations
APPROVED
 MMdadoda
 12/17/2015 5:36:14 PM

Quant Time: Dec 17 14:06:18 2015
 Quant Method : Z:\HPCHEM1\BNA M\METHODS\SOM02.2-EPA-SIM-BM121515.M
 Quant Title : ASP BNA STANDARDS FOR 5 POINT CALIBRATION
 QLast Update : Thu Dec 17 02:56:38 2015
 Response via : Initial Calibration

Internal Standards	R.T.	QIon	Response	Conc	Units	Dev(Min)
1) 1,4-Dichlorobenzene-d4	7.71	152	4063	0.40	ng/ul	0.00
4) Naphthalene-d8	10.50	136	16202	0.40	ng/ul	0.00
8) Acenaphthene-d10	14.37	164	8452	0.40	ng/ul	0.00
12) Phenanthrene-d10	17.11	188	16511m	0.40	ng/ul	0.00
18) Chrysene-d12	21.30	240	15318	0.40	ng/ul	-0.01
22) Perylene-d12	23.56	264	16466m	0.40	ng/ul	-0.01
System Monitoring Compounds						
2) 1,4-Dioxane-d8	3.17	96	17330	9.98	ng/uL	0.00
6) 2-Methylnaphthalene-d10	12.10	152	4723	0.24	ng/ul	0.00
16) Fluoranthene-d10	19.14	212	7836	0.22	ng/ul	0.00
Target Compounds						
						Ovalue
5) Naphthalene	10.55	128	1857	0.05	ng/ul#	87
7) 2-Methylnaphthalene	12.16	142	669	0.03	ng/ul	99
9) Acenaphthylene	14.07	152	2402	0.07	ng/ul#	91
10) Acenaphthene	14.42	153	1487	0.06	ng/ul#	87
11) Fluorene	15.41	166	2254	0.08	ng/ul#	83
14) Phenanthrene	17.14	178	8066m	0.19	ng/ul	
17) Fluoranthene	19.17	202	3586	0.08	ng/ul	91

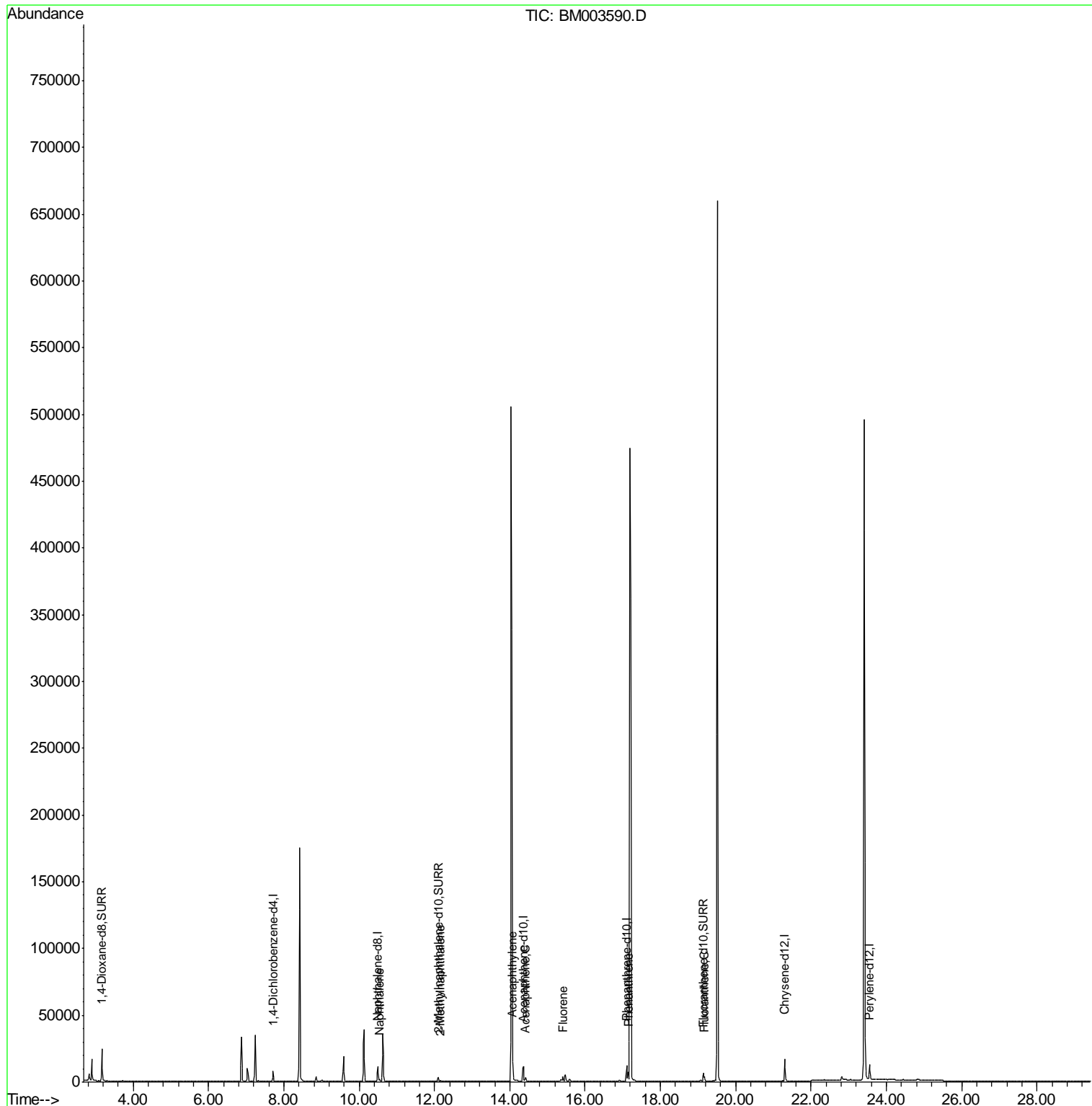
(#) = qualifier out of range (m) = manual integration (+) = signals summed

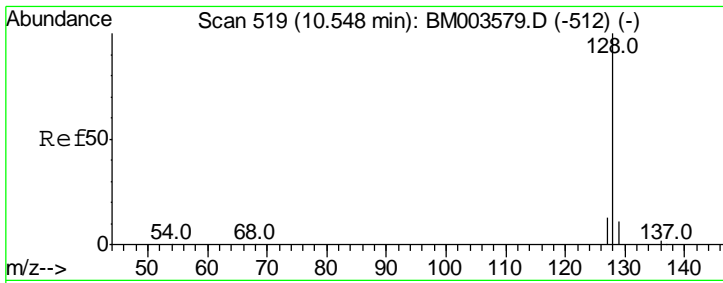
Data Path : Z:\HPCHEM1\BNA M\DATA\BM121615\
 Data File : BM003590.D
 Acq On : 16 Dec 2015 22:43
 Operator : UM/IZ
 Sample : G4767-14
 Misc :
 ALS Vial : 17 Sample Multiplier: 1

Instrument :
 BNA_M
ClientSampleId :
 D9N36

Manual Integrations
APPROVED
 MMdadoda
 12/17/2015 5:36:14 PM

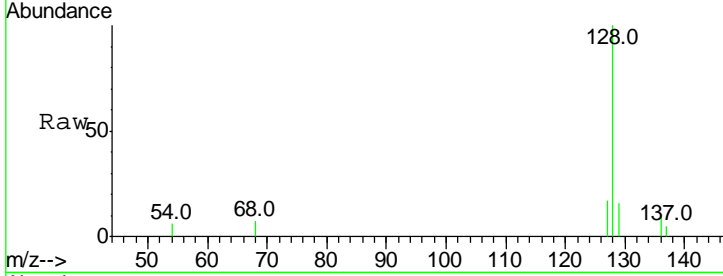
Quant Time: Dec 17 14:06:18 2015
 Quant Method : Z:\HPCHEM1\BNA M\METHODS\SOM02.2-EPA-SIM-BM121515.M
 Quant Title : ASP BNA STANDARDS FOR 5 POINT CALIBRATION
 QLast Update : Thu Dec 17 02:56:38 2015
 Response via : Initial Calibration





#5
 Naphthalene
 Concen: 0.05 ng/ul
 RT: 10.55 min Scan# 519
 Delta R.T. 0.00 min
 Lab File: BM003590.D
 Acq: 16 Dec 2015 22:43

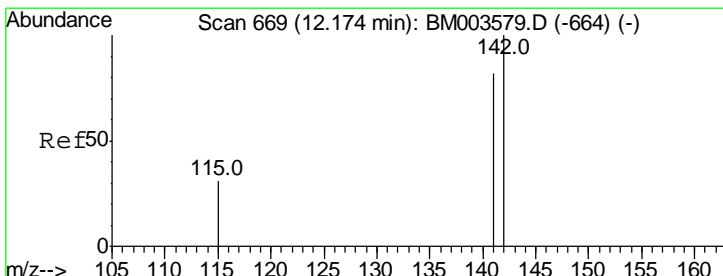
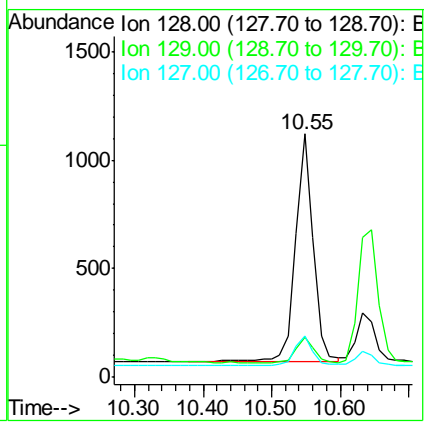
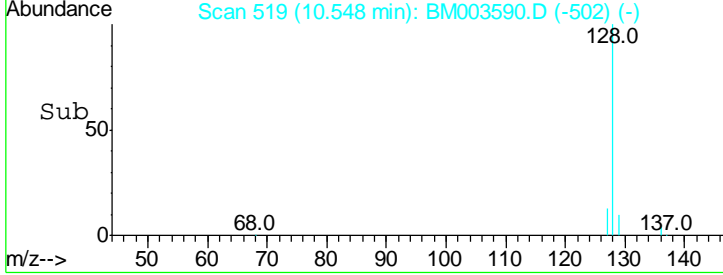
Instrument :
 BNA_M
ClientSampled :
 D9N36



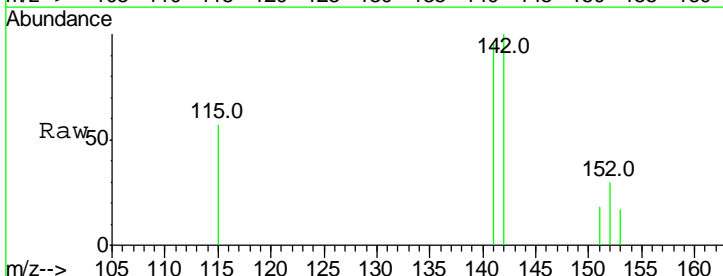
Tgt Ion: 128 Resp: 1857

Ion	Ratio	Lower	Upper
128	100		
129	16.2	9.0	13.6#
127	16.8	9.6	14.4#

Manual Integrations
APPROVED
 MMdadoda
 12/17/2015 5:36:14 PM

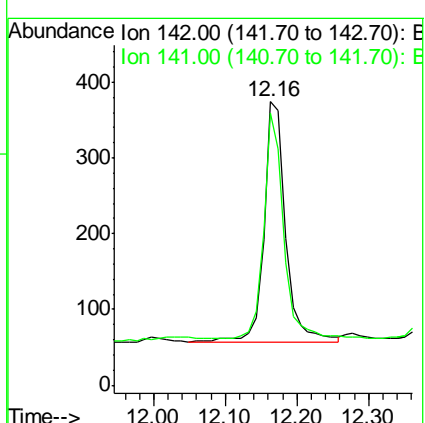
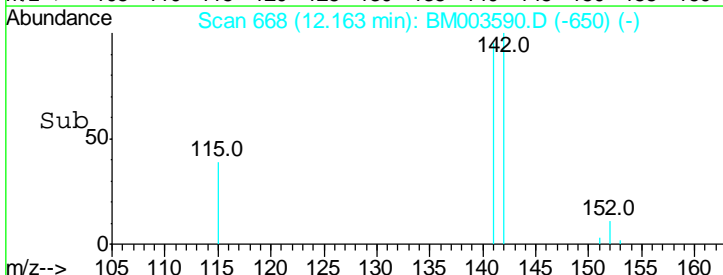


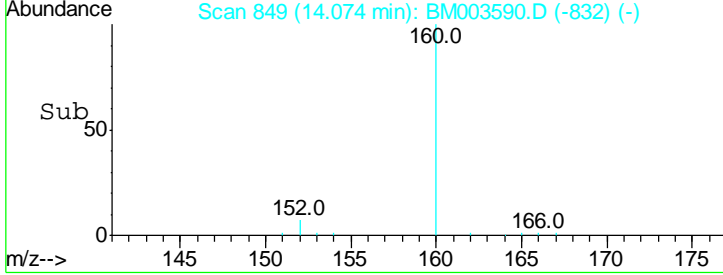
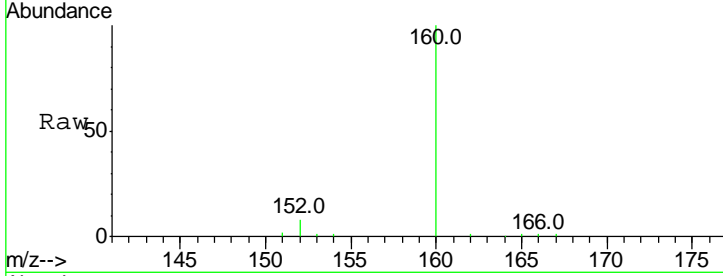
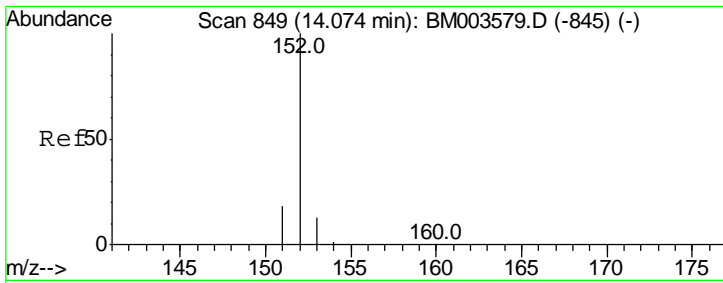
#7
 2-Methylnaphthalene
 Concen: 0.03 ng/ul
 RT: 12.16 min Scan# 668
 Delta R.T. -0.01 min
 Lab File: BM003590.D
 Acq: 16 Dec 2015 22:43



Tgt Ion: 142 Resp: 669

Ion	Ratio	Lower	Upper
142	100		
141	88.6	70.3	105.5



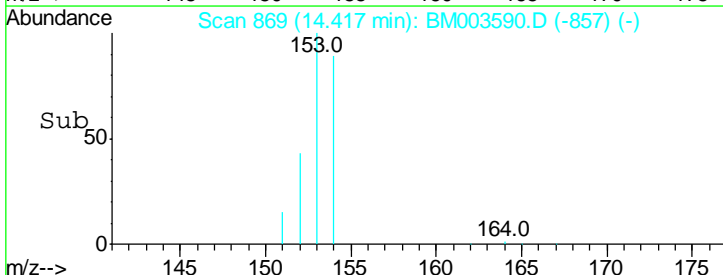
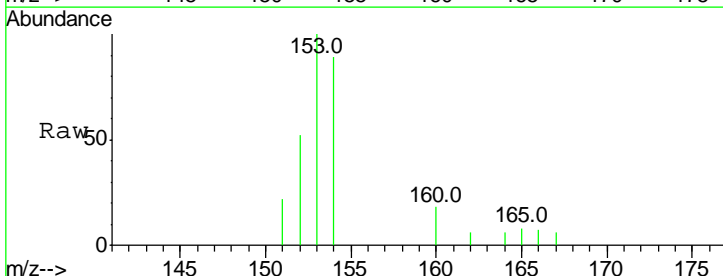
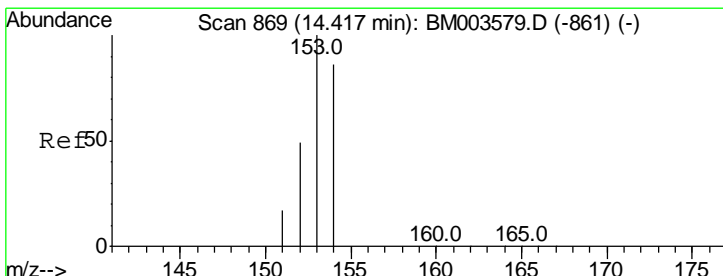
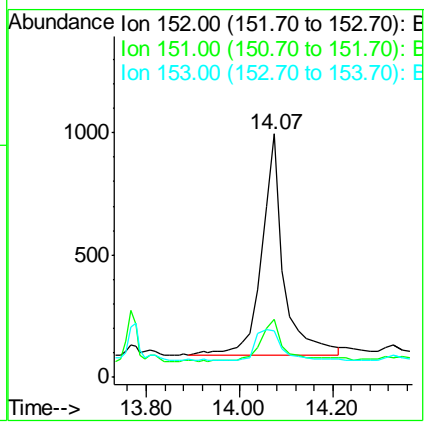


#9
 Acenaphthylene
 Concen: 0.07 ng/ul
 RT: 14.07 min Scan# 849
 Delta R.T. -0.00 min
 Lab File: BM003590.D
 Acq: 16 Dec 2015 22:43

Tgt Ion	Resp	Lower	Upper
152	100		
151	23.7	17.6	26.4
153	19.3	9.7	14.5#

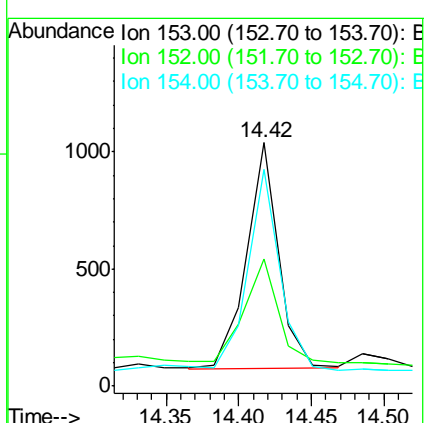
Instrument :
 BNA_M
 ClientSampled :
 D9N36

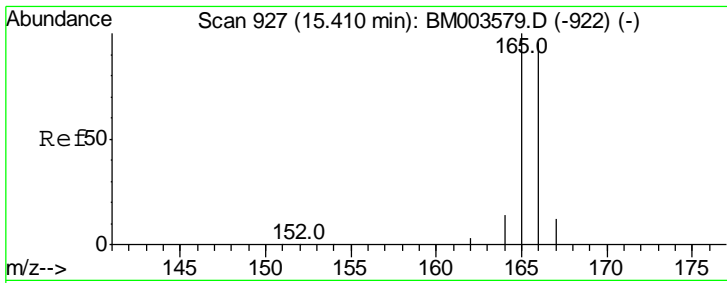
Manual Integrations
 APPROVED
 MMDadoda
 12/17/2015 5:36:14 PM



#10
 Acenaphthene
 Concen: 0.06 ng/ul
 RT: 14.42 min Scan# 869
 Delta R.T. 0.00 min
 Lab File: BM003590.D
 Acq: 16 Dec 2015 22:43

Tgt Ion	Resp	Lower	Upper
153	100		
152	52.1	33.9	50.9#
154	89.2	80.6	121.0



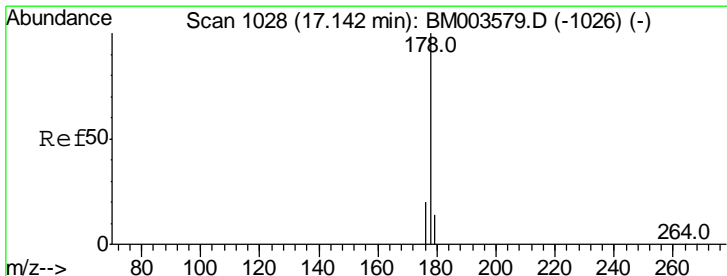
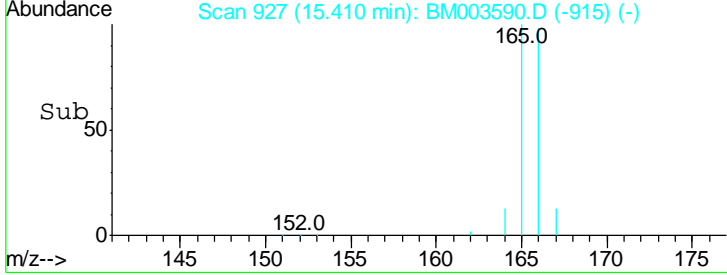
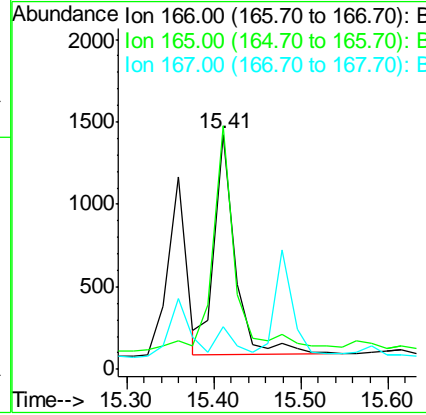
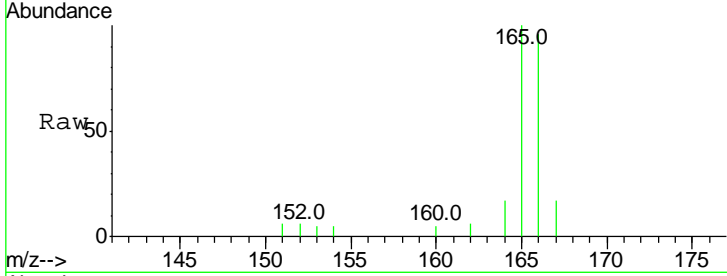


#11
 Fluorene
 Concen: 0.08 ng/ul
 RT: 15.41 min Scan# 927
 Delta R.T. 0.00 min
 Lab File: BM003590.D
 Acq: 16 Dec 2015 22:43

Instrument :
 BNA_M
 ClientSampled :
 D9N36

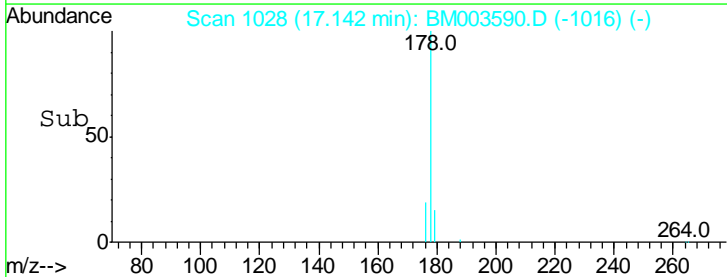
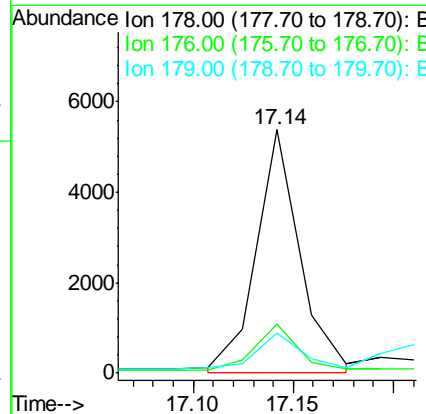
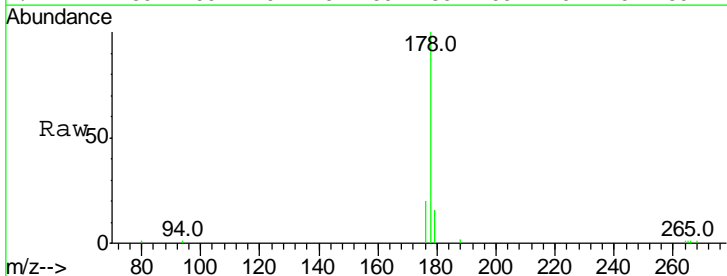
Tgt Ion	Resp	Lower	Upper
166	100		
165	103.7	69.6	104.4
167	18.1	11.9	17.9#

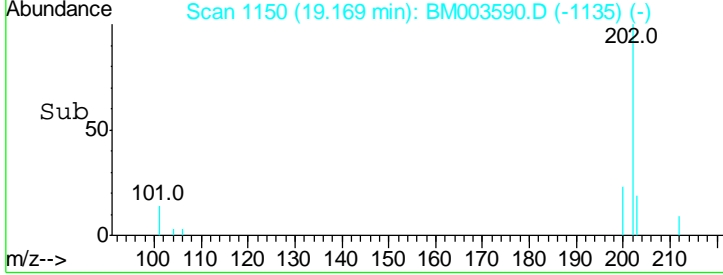
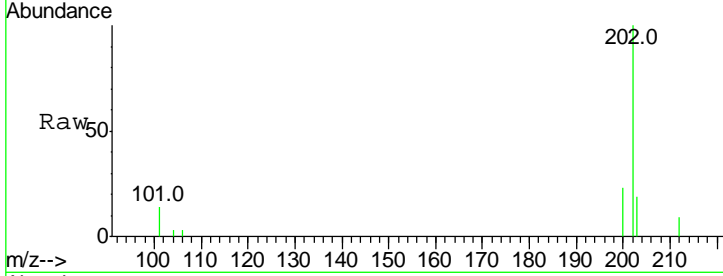
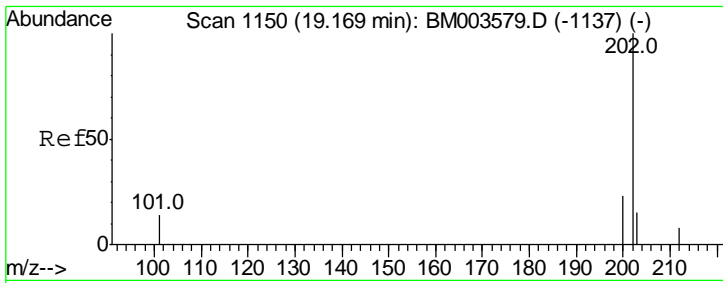
Manual Integrations
APPROVED
 MMDadoda
 12/17/2015 5:36:14 PM



#14
 Phenanthrene
 Concen: 0.19 ng/ul m
 RT: 17.14 min Scan# 1028
 Delta R.T. 0.00 min
 Lab File: BM003590.D
 Acq: 16 Dec 2015 22:43

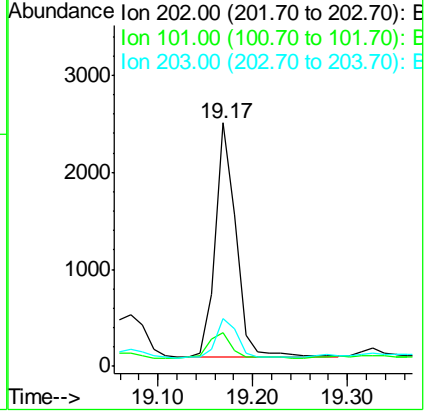
Tgt Ion	Resp	Lower	Upper
178	100		
176	20.3	13.0	19.4#
179	16.3	14.2	21.2





#17
 Fluoranthene
 Concen: 0.08 ng/ul
 RT: 19.17 min Scan# 1150
 Delta R.T. 0.00 min
 Lab File: BM003590.D
 Acq: 16 Dec 2015 22:43

Tot Ion	Ion	Ratio	Lower	Upper
3586	202	100		
	101	13.9	0.0	29.6
	203	19.5	0.0	36.3



Instrument :
 BNA_M
 ClientSampled :
 D9N36

Manual Integrations
 APPROVED
 MMdadoda
 12/17/2015 5:36:14 PM