

Data Path : Z:\SVOASRV\HPCHEM1\BNA M\DATA\BM121719\
 Data File : BM024144.D
 Acq On : 18 Dec 2019 10:13
 Operator : JU
 Sample : K6170-02
 Misc :
 ALS Vial : 20 Sample Multiplier: 1

Instrument :
 BNA_M
 ClientSampleId :
 C0BR8

Integration Parameters: LSCINT.P

Integrator: RTE
 Smoothing : OFF
 Sampling : 1
 Start Thrs: 0.2
 Stop Thrs : 0

Filtering: 5
 Min Area: 0.1 % of largest Peak
 Max Peaks: 100
 Peak Location: TOP

If leading or trailing edge < 100 prefer < Baseline drop else tangent >
 Peak separation: 5

Method : Z:\SVOASRV\HPCHEM1\BNA_M\METHODS\SOM-EPA-BM121719MA.M
 Title : SVOA CALIBRATION

Signal : TIC

peak #	R.T. min	first scan	max scan	last scan	PK TY	peak height	corr. area	corr. % max.	% of total
1	3.005	18	20	30	rVB	76806	116413	1.17%	0.139%
2	3.710	136	140	142	rBV2	12502	15826	0.16%	0.019%
3	6.616	629	634	635	rBV3	10954	14651	0.15%	0.017%
4	6.651	635	640	652	rVB	278293	507412	5.10%	0.605%
5	6.804	660	666	679	rBV	926391	1609929	16.18%	1.920%
6	6.992	691	698	708	rBV	1051347	1797841	18.06%	2.144%
7	7.451	769	776	787	rBV	1058332	1739144	17.47%	2.074%
8	8.175	893	899	918	rBV	908921	1542007	15.49%	1.839%
9	8.604	964	972	987	rBV	1270774	2191243	22.02%	2.613%
10	9.039	1041	1046	1051	rBV	18952	26011	0.26%	0.031%
11	9.316	1086	1093	1110	rBV	1059409	1823330	18.32%	2.174%
12	9.857	1178	1185	1214	rBV	1501823	2853502	28.67%	3.402%
13	10.216	1239	1246	1263	rBV	1682001	2823468	28.37%	3.366%
14	10.398	1273	1277	1283	rBV5	16781	35394	0.36%	0.042%
15	11.527	1464	1469	1475	rBV2	20662	29926	0.30%	0.036%
16	11.833	1515	1521	1529	rBV	20861	41162	0.41%	0.049%
17	13.539	1804	1811	1822	rBV	3343552	4749888	47.73%	5.663%
18	13.798	1848	1855	1868	rBV	3884985	5700889	57.28%	6.797%
19	14.110	1902	1908	1918	rBV2	2806884	4109965	41.30%	4.900%
20	14.374	1948	1953	1968	rBV2	128398	370979	3.73%	0.442%
21	15.116	2072	2079	2098	rBV	5329044	7459963	74.95%	8.895%
22	15.263	2098	2104	2116	rVV	1584966	2271153	22.82%	2.708%
23	15.357	2116	2120	2128	rVB	63118	104784	1.05%	0.125%
24	15.510	2141	2146	2151	rBV9	7426	14283	0.14%	0.017%
25	15.757	2184	2188	2193	rBV7	16126	21672	0.22%	0.026%
26	15.904	2208	2213	2218	rVB2	19830	28852	0.29%	0.034%
27	16.545	2319	2322	2327	rBV6	10612	15950	0.16%	0.019%
28	16.657	2337	2341	2345	rBV2	20162	25270	0.25%	0.030%
29	16.868	2371	2377	2387	rBV	3379668	4880438	49.04%	5.819%
30	16.968	2387	2394	2410	rVV	6051483	8618998	86.60%	10.277%
31	17.180	2425	2430	2435	rBV	61681	92778	0.93%	0.111%
32	17.557	2491	2494	2498	rBV5	7145	10106	0.10%	0.012%
33	17.792	2530	2534	2537	rBV3	32642	54713	0.55%	0.065%
34	18.180	2598	2600	2606	rBV6	5712	10231	0.10%	0.012%

LSC Area Percent Report

Data Path : Z:\SVOASRV\HPCHEM1\BNA M\DATA\BM121719\
Data File : BM024144.D
Acq On : 18 Dec 2019 10:13
Operator : JU
Sample : K6170-02
Misc :
ALS Vial : 20 Sample Multiplier: 1

Instrument :
BNA_M
ClientSampleId :
C0BR8

Integration Parameters: LSCINT.P
Integrator: RTE
Smoothing : OFF Filtering: 5
Sampling : 1 Min Area: 0.1 % of largest Peak
Start Thrs: 0.2 Max Peaks: 100
Stop Thrs : 0 Peak Location: TOP

If leading or trailing edge < 100 prefer < Baseline drop else tangent >
Peak separation: 5

Method : Z:\SVOASRV\HPCHEM1\BNA_M\METHODS\SOM-EPA-BM121719MA.M
Title : SVOA CALIBRATION

35	18.909	2719	2724	2731	rBV2	71989	123883	1.24%	0.148%
36	19.162	2763	2767	2772	rBV	59540	77329	0.78%	0.092%
37	19.274	2780	2786	2801	rBV	7337104	9952600	100.00%	11.867%
38	19.409	2806	2809	2814	rVB5	34929	45562	0.46%	0.054%
39	21.080	3088	3093	3102	rBV	4132106	5304437	53.30%	6.325%
40	23.080	3427	3433	3439	rBV	4643204	8104404	81.43%	9.663%
41	23.209	3450	3455	3469	rVB	2560281	4553895	45.76%	5.430%

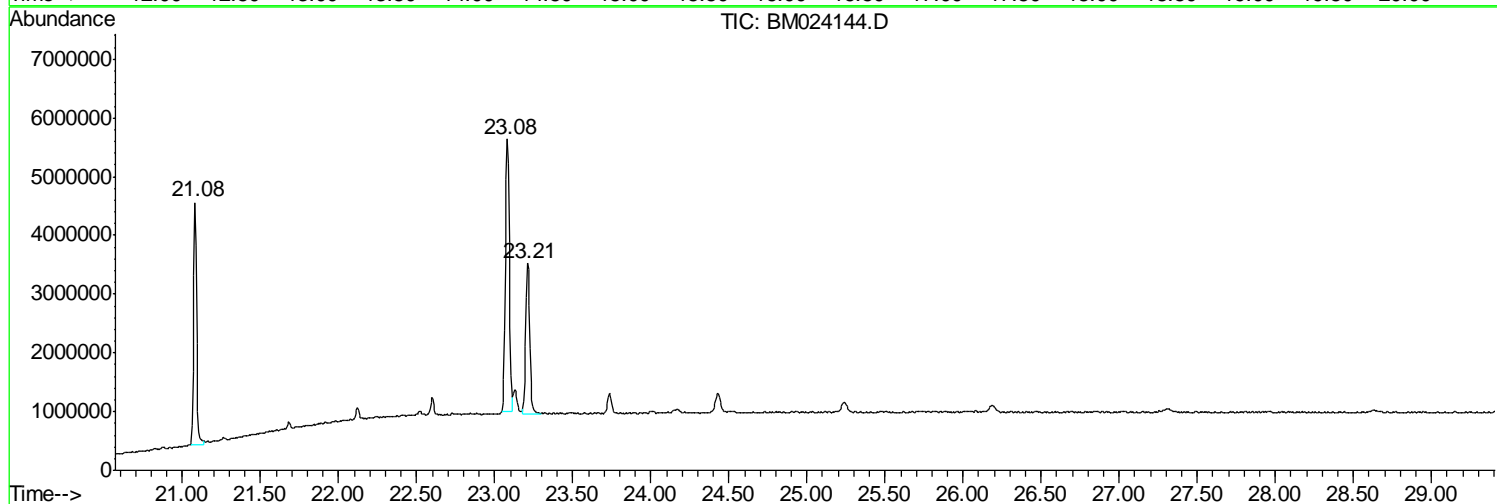
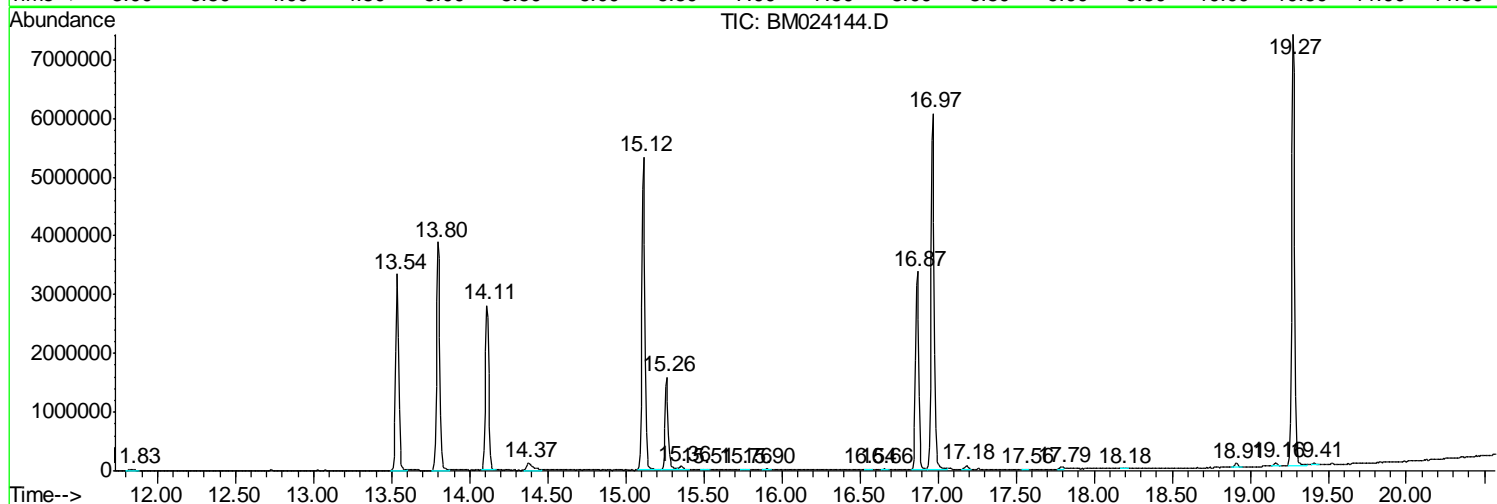
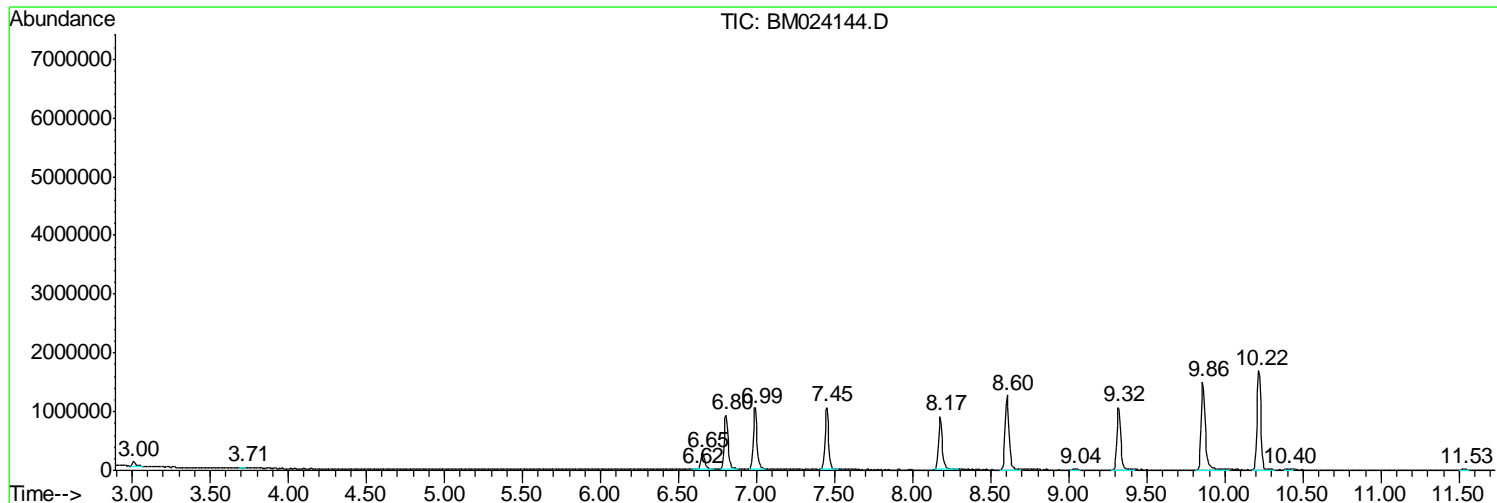
Sum of corrected areas: 83870281

Data Path : Z:\SVOASRV\HPCHEM1\BNA M\DATA\BM121719\
 Data File : BM024144.D
 Acq On : 18 Dec 2019 10:13
 Operator : JU
 Sample : K6170-02
 Misc :
 ALS Vial : 20 Sample Multiplier: 1

Instrument :
 BNA_M
 ClientSampleId :
 C0BR8

Quant Method : Z:\SVOASRV\HPCHEM1\BNA_M\METHODS\SOM-EPA-BM121719MA.M
 Quant Title : SVOA CALIBRATION

TIC Library : C:\DATABASE\NIST11.L
 TIC Integration Parameters: LSCINT.P



Data Path : Z:\SVOASRV\HPCHEM1\BNA_M\DATA\BM121719\
Data File : BM024144.D
Acq On : 18 Dec 2019 10:13
Operator : JU
Sample : K6170-02
Misc :
ALS Vial : 20 Sample Multiplier: 1

Instrument :
BNA_M
ClientSampleId :
C0BR8

Quant Method : Z:\SVOASRV\HPCHEM1\BNA_M\METHODS\SOM-EPA-BM121719MA.M
Quant Title : SVOA CALIBRATION

TIC Library : C:\DATABASE\NIST11.L
TIC Integration Parameters: LSCINT.P

No Library Search Compounds Detected

Data Path : Z:\SVOASRV\HPCHEM1\BNA_M\DATA\BM121719\
Data File : BM024144.D
Acq On : 18 Dec 2019 10:13
Operator : JU
Sample : K6170-02
Misc :
ALS Vial : 20 Sample Multiplier: 1

Instrument :
BNA_M
ClientSampleId :
C0BR8

Quant Method : Z:\SVOASRV\HPCHEM1\BNA_M\METHODS\SOM-EPA-BM121719MA.M
Quant Title : SVOA CALIBRATION

TIC Library : C:\DATABASE\NIST11.L
TIC Integration Parameters: LSCINT.P

TIC Top Hit name	RT	EstConc	Units	Response	--Internal Standard--			
					#	RT	Resp	Conc
