

Data Path : Z:\HPCHEM1\BNA_M\DATA\BM121816\
 Data File : BM008427.D
 Acq On : 18 Dec 2016 00:26
 Operator : UM/SJ
 Sample : H6039-12DL 5X
 Misc :
 ALS Vial : 25 Sample Multiplier: 1

Instrument :
 BNA_M
 ClientSampleId :
 DA8S8DL

Quant Time: Dec 18 04:20:50 2016
 Quant Method : Z:\HPCHEM1\BNA_M\METHODS\SOM02.2-EPA-2016\SOM02.2-EPA-BM121416.M
 Quant Title : SVOA CALIBRATION
 QLast Update : Sun Dec 18 04:15:46 2016
 Response via : Initial Calibration

Internal Standards	R.T.	QIon	Response	Conc	Units	Dev(Min)
1) 1,4-Dichlorobenzene-d4	7.66	152	103317	20.00	ng/ul	0.00
18) Naphthalene-d8	10.43	136	410436	20.00	ng/ul	0.00
35) Acenaphthene-d10	14.30	164	277685	20.00	ng/ul	0.00
61) Phenanthrene-d10	17.06	188	563905	20.00	ng/ul	0.00
75) Chrysene-d12	21.26	240	697899	20.00	ng/ul	0.00
83) Perylene-d12	23.49	264	697754	20.00	ng/ul	0.00

System Monitoring Compounds

3) 1,4-Dioxane-d8	3.22	96	8491	3.87	ng/uL	-0.01
5) Phenol-d5	6.89	99	10897	1.36	ng/ul	0.04
7) Bis-(2-Chloroethyl)ether-d	7.01	67	29849	6.48	ng/ul	0.00
9) 2-Chlorophenol-d4	7.22	132	34877	5.78	ng/ul	0.02
13) 4-Methylphenol-d8	8.39	113	23981	3.86	ng/ul	0.02
19) Nitrobenzene-d5	8.82	128	20841	7.03	ng/ul	0.00
22) 2-Nitrophenol-d4	9.54	143	23211	7.06	ng/ul	0.00
26) 2,4-Dichlorophenol-d3	10.08	165	44580	7.40	ng/ul	0.00
29) 4-Chloroaniline-d4	10.60	131	3057	0.44	ng/ul	0.00
43) Dimethylphthalate-d6	13.72	166	147598	8.00	ng/ul	0.00
46) Acenaphthylene-d8	13.99	160	175631	8.05	ng/ul	0.00
51) 4-Nitrophenol-d4	14.67	143	1116	0.41	ng/ul	0.11
57) Fluorene-d10	15.30	176	129257	8.06	ng/ul	0.00
62) 4,6-Dinitro-2-methylphenol	15.48	200	13320	3.97	ng/ul	0.02
70) Anthracene-d10	17.16	188	200529	8.16	ng/ul	0.00
76) Pyrene-d10	19.46	212	238830	8.86	ng/ul	0.00
87) Benzo(a)pyrene-d12	23.34	264	234138	7.99	ng/ul	0.00

Target Compounds

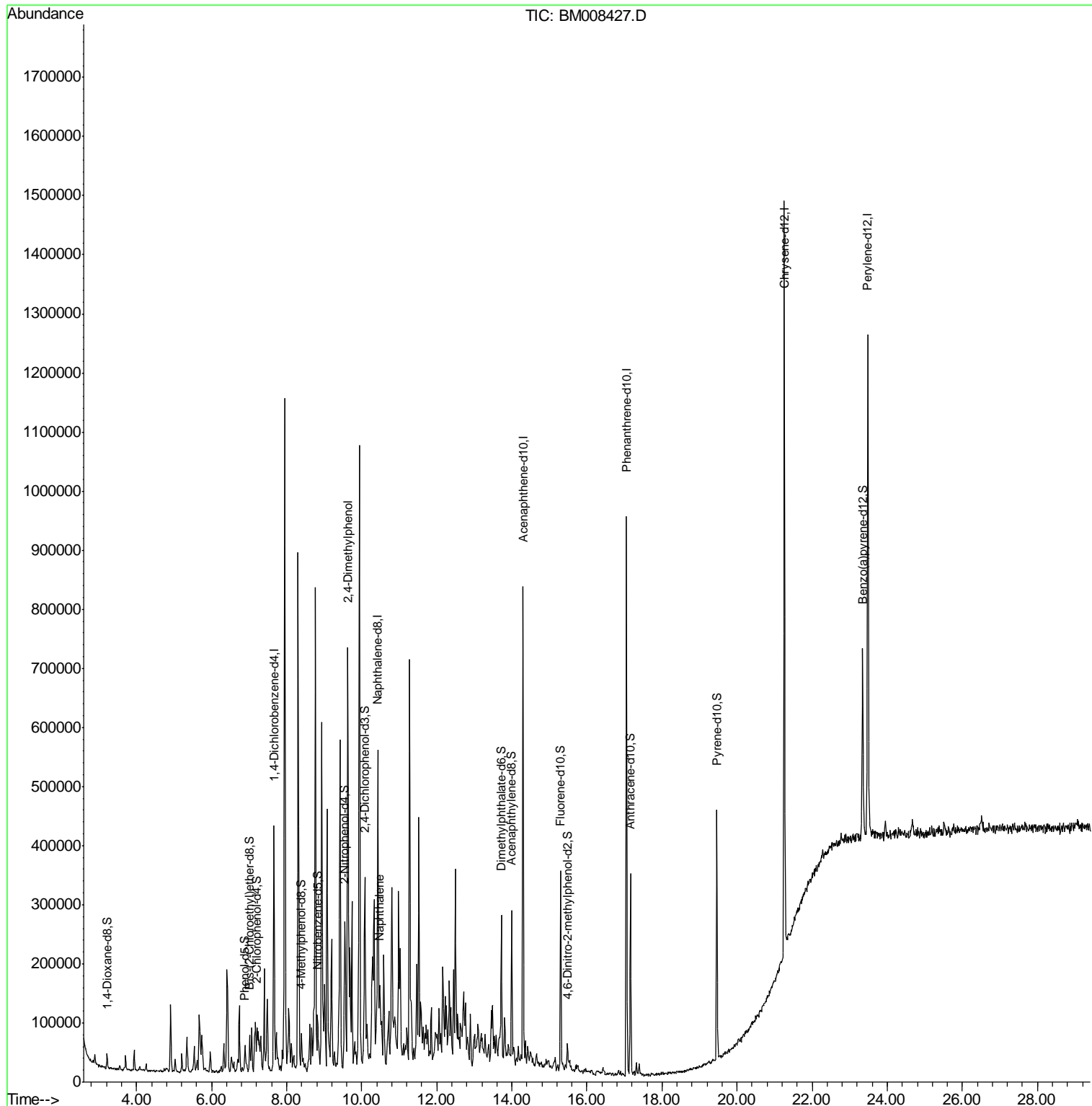
					Qvalue
24) 2,4-Dimethylphenol	9.63	107	246006	32.76	ng/ul 98
28) Naphthalene	10.48	128	40751	2.10	ng/ul 99

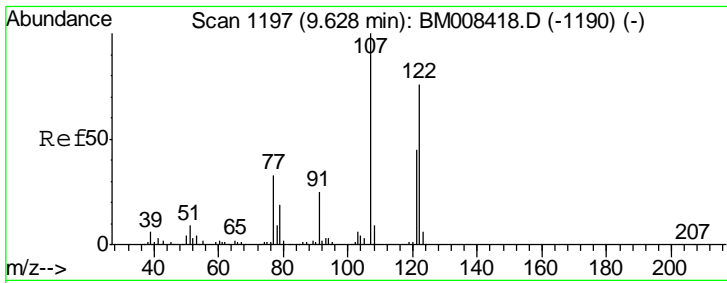
(#) = qualifier out of range (m) = manual integration (+) = signals summed

Data Path : Z:\HPCHEM1\BNA_M\DATA\BM121816\
 Data File : BM008427.D
 Acq On : 18 Dec 2016 00:26
 Operator : UM/SJ
 Sample : H6039-12DL 5X
 Misc :
 ALS Vial : 25 Sample Multiplier: 1

Instrument :
 BNA_M
 ClientSampled :
 DA8S8DL

Quant Time: Dec 18 04:20:50 2016
 Quant Method : Z:\HPCHEM1\BNA_M\METHODS\SOM02.2-EPA-2016\SOM02.2-EPA-BM121416.M
 Quant Title : SVOA CALIBRATION
 QLast Update : Sun Dec 18 04:15:46 2016
 Response via : Initial Calibration

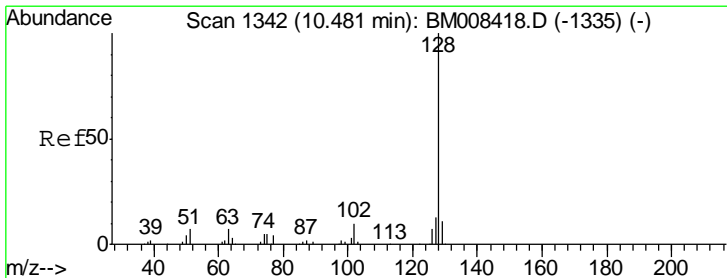
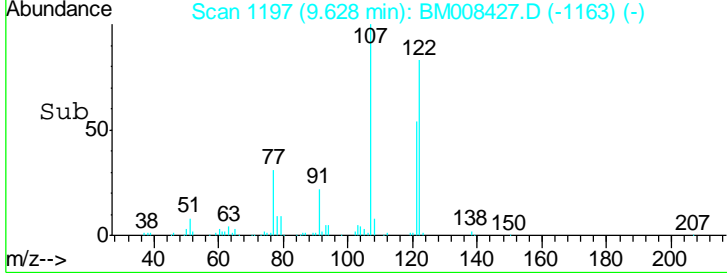
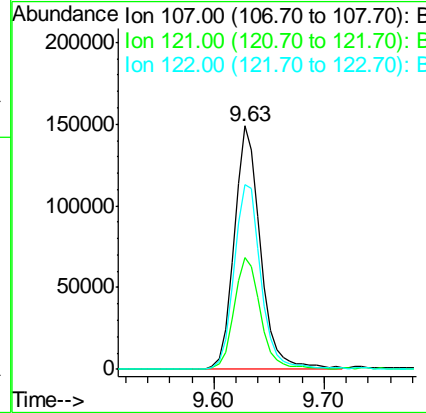
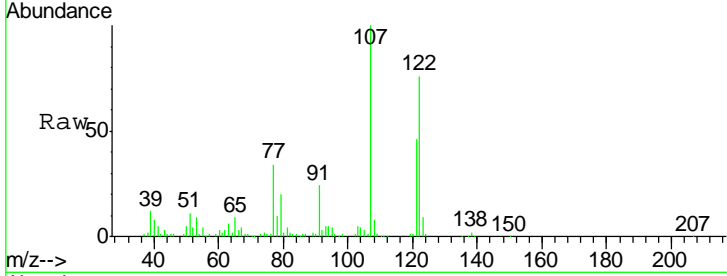




#24
 2,4-Dimethylphenol
 Concen: 32.76 ng/ul
 RT: 9.63 min Scan# 1197
 Delta R.T. 0.00 min
 Lab File: BM008427.D
 Acq: 18 Dec 2016 00:26

Instrument :
 BNA_M
 ClientSampled :
 DA8S8DL

Tgt Ion	Resp	Lower	Upper
107	246006		
107	100		
121	46.2	37.3	55.9
122	75.7	58.2	87.4



#28
 Naphthalene
 Concen: 2.10 ng/ul
 RT: 10.48 min Scan# 1342
 Delta R.T. 0.00 min
 Lab File: BM008427.D
 Acq: 18 Dec 2016 00:26

Tgt Ion	Resp	Lower	Upper
128	40751		
128	100		
129	10.4	8.4	12.6
127	13.7	10.4	15.6

