

Data Path : Z:\svoasrv\HPCHEM1\BNA_M\Data\BM121823\
 Data File : BM043386.D
 Acq On : 18 Dec 2023 10:50
 Operator : MA/JU
 Sample : 05626-16
 Misc :
 ALS Vial : 4 Sample Multiplier: 1

Instrument :
 BNA_M
 ClientSampleId :
 DCLG2

Integration Parameters: LSCINT.P

Integrator: RTE
 Smoothing : OFF
 Sampling : 1
 Start Thrs: 0.2
 Stop Thrs : 0

Filtering: 5
 Min Area: 0.1 % of largest Peak
 Max Peaks: 100
 Peak Location: TOP

If leading or trailing edge < 100 prefer < Baseline drop else tangent >
 Peak separation: 5

Method : Z:\svoasrv\HPCHEM1\BNA_M\Methods\SFAM-EPA-BM121523.MA.M
 Title : SVOA CALIBRATION

Signal : TIC: BM043386.D\data.ms

peak #	R.T. min	first scan	max scan	last scan	PK TY	peak height	corr. area	corr. % max.	% of total
1	3.810	103	106	121	rBV	477039	814233	2.30%	0.347%
2	5.481	383	390	397	rVB	121057	183881	0.52%	0.078%
3	5.610	408	412	421	rBV	91737	190613	0.54%	0.081%
4	7.069	655	660	666	rVB	186289	277345	0.78%	0.118%
5	7.151	666	674	680	rBV	2066509	3413442	9.62%	1.455%
6	7.204	680	683	690	rVB	252514	388819	1.10%	0.166%
7	7.334	697	705	710	rBV	1555741	2530538	7.13%	1.079%
8	7.522	730	737	746	rVB	1869252	3049980	8.60%	1.300%
9	7.634	746	756	763	rBV	624846	1016313	2.87%	0.433%
10	7.992	809	817	827	rBV	1773091	2868630	8.09%	1.223%
11	8.098	827	835	844	rVV2	202856	431501	1.22%	0.184%
12	8.363	872	880	890	rBV	2596618	4092190	11.54%	1.745%
13	8.534	903	909	917	rVB2	157886	294204	0.83%	0.125%
14	8.628	920	925	931	rBV	133429	205671	0.58%	0.088%
15	8.704	931	938	946	rBV	2462196	3981580	11.23%	1.698%
16	8.828	952	959	968	rVB2	281979	544288	1.53%	0.232%
17	9.098	999	1005	1010	rBV	141285	215510	0.61%	0.092%
18	9.163	1010	1016	1026	rBV	1918502	3334197	9.40%	1.422%
19	9.351	1038	1048	1055	rVB	118054	234571	0.66%	0.100%
20	9.475	1062	1069	1076	rVB2	180518	395130	1.11%	0.168%
21	9.886	1130	1139	1150	rBV	1498462	2530571	7.13%	1.079%
22	10.045	1151	1166	1173	rBV3	274458	580371	1.64%	0.247%
23	10.192	1184	1191	1204	rBV2	447287	907313	2.56%	0.387%
24	10.316	1204	1212	1221	rVV8	53622	199050	0.56%	0.085%
25	10.422	1221	1230	1239	rVV2	2395492	4169250	11.75%	1.778%
26	10.804	1283	1295	1298	rBV	2440168	4191243	11.82%	1.787%
27	10.857	1298	1304	1312	rVB	20664978	35469047	100.00%	15.123%
28	10.945	1312	1319	1322	rBV	1579281	2984675	8.41%	1.273%
29	11.339	1379	1386	1393	rBV6	76857	179065	0.50%	0.076%
30	12.298	1542	1549	1554	rBV2	181456	352191	0.99%	0.150%
31	12.351	1554	1558	1568	rVV2	118488	264531	0.75%	0.113%
32	12.457	1568	1576	1584	rVB	2789284	4334226	12.22%	1.848%
33	12.574	1590	1596	1603	rBV3	100689	209232	0.59%	0.089%
34	12.674	1603	1613	1622	rVB	2029607	3275025	9.23%	1.396%
35	13.463	1739	1747	1753	rBV2	159285	305128	0.86%	0.130%
36	13.945	1824	1829	1835	rVV	104118	204855	0.58%	0.087%

Data Path : Z:\svoasrv\HPCHEM1\BNA_M\Data\BM121823\
 Data File : BM043386.D
 Acq On : 18 Dec 2023 10:50
 Operator : MA/JU
 Sample : 05626-16
 Misc :
 ALS Vial : 4 Sample Multiplier: 1

Instrument :
 BNA_M
 ClientSampleId :
 DCLG2

Integration Parameters: LSCINT.P

Integrator: RTE
 Smoothing : OFF Filtering: 5
 Sampling : 1 Min Area: 0.1 % of largest Peak
 Start Thrs: 0.2 Max Peaks: 100
 Stop Thrs : 0 Peak Location: TOP

If leading or trailing edge < 100 prefer < Baseline drop else tangent >
 Peak separation: 5

Method : Z:\svoasrv\HPCHEM1\BNA_M\Methods\SFAM-EPA-BM121523.MA.M
 Title : SVOA CALIBRATION

37	14.039	1840	1845	1851	rVV	3507185	4969712	14.01%	2.119%
38	14.316	1886	1892	1909	rVB	4014831	6774260	19.10%	2.888%
39	14.621	1935	1944	1950	rVV	3229237	4832820	13.63%	2.061%
40	14.686	1950	1955	1964	rVB	745870	1081612	3.05%	0.461%
41	14.821	1972	1978	1988	rBV	1484953	2290004	6.46%	0.976%
42	15.021	2008	2012	2023	rVB	222215	435224	1.23%	0.186%
43	15.615	2106	2113	2118	rBV	4893780	6932111	19.54%	2.956%
44	15.668	2118	2122	2127	rVB	247872	344817	0.97%	0.147%
45	15.733	2127	2133	2140	rBV	1473288	1940139	5.47%	0.827%
46	15.874	2152	2157	2167	rVB4	106554	232427	0.66%	0.099%
47	16.351	2229	2238	2245	rBV3	600337	1249442	3.52%	0.533%
48	17.015	2346	2351	2358	rBV2	138584	232979	0.66%	0.099%
49	17.180	2374	2379	2387	rVB2	220948	381198	1.07%	0.163%
50	17.368	2405	2411	2415	rBV	3216034	4719968	13.31%	2.012%
51	17.409	2415	2418	2422	rVV	737228	988762	2.79%	0.422%
52	17.468	2422	2428	2431	rVV	4544475	6682019	18.84%	2.849%
53	17.498	2431	2433	2439	rVV	1282922	1623681	4.58%	0.692%
54	17.562	2439	2444	2453	rVB	488860	806413	2.27%	0.344%
55	17.774	2471	2480	2492	rBV	572591	1127793	3.18%	0.481%
56	17.868	2492	2496	2504	rVV3	109211	205732	0.58%	0.088%
57	18.027	2520	2523	2529	rVB5	114254	204240	0.58%	0.087%
58	18.268	2558	2564	2574	rBV2	771146	1232152	3.47%	0.525%
59	18.368	2578	2581	2586	rVV	206980	288405	0.81%	0.123%
60	18.439	2587	2593	2603	rVB3	523292	960838	2.71%	0.410%
61	18.786	2648	2652	2658	rBV2	326632	441371	1.24%	0.188%
62	18.986	2683	2686	2689	rVB2	185384	201469	0.57%	0.086%
63	19.162	2712	2716	2719	rBV2	138053	223383	0.63%	0.095%
64	19.298	2735	2739	2751	rBV2	210318	462898	1.31%	0.197%
65	19.421	2755	2760	2765	rVB	3295492	4481385	12.63%	1.911%
66	19.480	2765	2770	2774	rBV2	771619	1013567	2.86%	0.432%
67	19.645	2795	2798	2803	rVB2	161388	222893	0.63%	0.095%
68	19.750	2811	2816	2819	rBV	5075920	7329571	20.66%	3.125%
69	19.780	2819	2821	2830	rVV	3868606	5345639	15.07%	2.279%
70	19.856	2830	2834	2840	rVB3	198686	335671	0.95%	0.143%
71	20.021	2859	2862	2867	rVB	457954	647991	1.83%	0.276%
72	20.109	2872	2877	2883	rBV3	391560	825361	2.33%	0.352%
73	20.256	2894	2902	2908	rBV3	969394	2254598	6.36%	0.961%
74	20.303	2908	2910	2915	rVB	389146	426789	1.20%	0.182%
75	20.374	2919	2922	2925	rBV	276190	328583	0.93%	0.140%
76	20.433	2926	2932	2936	rBV2	552636	1067888	3.01%	0.455%

Data Path : Z:\svoasrv\HPCHEM1\BNA_M\Data\BM121823\
 Data File : BM043386.D
 Acq On : 18 Dec 2023 10:50
 Operator : MA/JU
 Sample : 05626-16
 Misc :
 ALS Vial : 4 Sample Multiplier: 1

Instrument :
 BNA_M
 ClientSampleId :
 DCLG2

Integration Parameters: LSCINT.P

Integrator: RTE
 Smoothing : OFF Filtering: 5
 Sampling : 1 Min Area: 0.1 % of largest Peak
 Start Thrs: 0.2 Max Peaks: 100
 Stop Thrs : 0 Peak Location: TOP

If leading or trailing edge < 100 prefer < Baseline drop else tangent >
 Peak separation: 5

Method : Z:\svoasrv\HPCHEM1\BNA_M\Methods\SFAM-EPA-BM121523.MA.M
 Title : SVOA CALIBRATION

77	20.574	2952	2956	2960	rBV	710992	1019007	2.87%	0.434%
78	20.803	2990	2995	3000	rBV3	584083	982342	2.77%	0.419%
79	20.980	3022	3025	3028	rBV3	235084	312065	0.88%	0.133%
80	21.021	3029	3032	3039	rVB3	595435	1011427	2.85%	0.431%
81	21.192	3058	3061	3064	rVB	356082	412737	1.16%	0.176%
82	21.227	3064	3067	3070	rBV2	448568	551866	1.56%	0.235%
83	21.262	3070	3073	3079	rVB	2294997	3084132	8.70%	1.315%
84	21.544	3111	3121	3126	rBV3	3744759	10308832	29.06%	4.395%
85	21.715	3145	3150	3157	rBV3	925873	1637810	4.62%	0.698%
86	21.862	3172	3175	3182	rVV2	564714	907497	2.56%	0.387%
87	21.927	3183	3186	3194	rVB4	389271	612643	1.73%	0.261%
88	22.103	3214	3216	3218	rBV	233771	276467	0.78%	0.118%
89	22.186	3226	3230	3237	rVB3	990196	1638689	4.62%	0.699%
90	22.339	3253	3256	3259	rVB	360585	398884	1.12%	0.170%
91	22.697	3313	3317	3324	rVB2	631948	1079690	3.04%	0.460%
92	23.238	3402	3409	3425	rBV	5502346	17191169	48.47%	7.330%
93	23.421	3435	3440	3446	rBV	870118	1534920	4.33%	0.654%
94	23.568	3461	3465	3474	rBV	299829	739253	2.08%	0.315%
95	23.768	3492	3499	3503	rBV	3081603	6000455	16.92%	2.558%
96	23.821	3503	3508	3512	rVV2	2708567	5048964	14.23%	2.153%
97	23.868	3512	3516	3527	rVB2	2130833	4381679	12.35%	1.868%
98	23.974	3527	3534	3540	rBV2	1696014	3579511	10.09%	1.526%
99	26.503	3956	3964	3974	rBV2	1261084	3834266	10.81%	1.635%
100	26.909	4025	4033	4045	rVB3	1093701	3229751	9.11%	1.377%

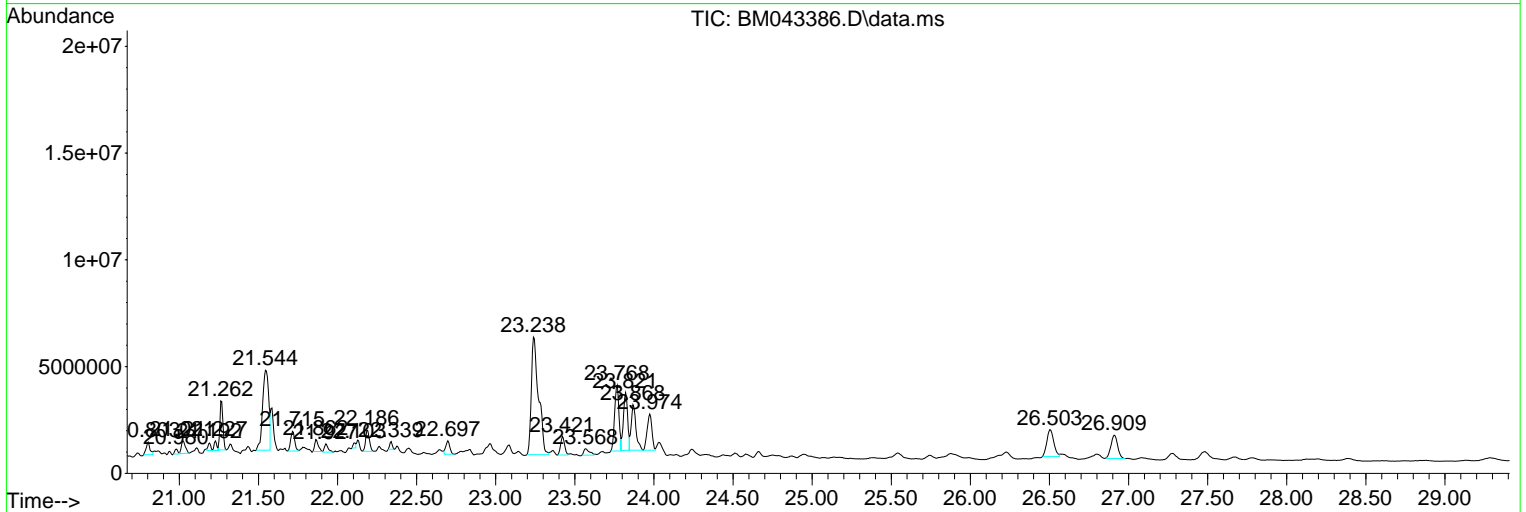
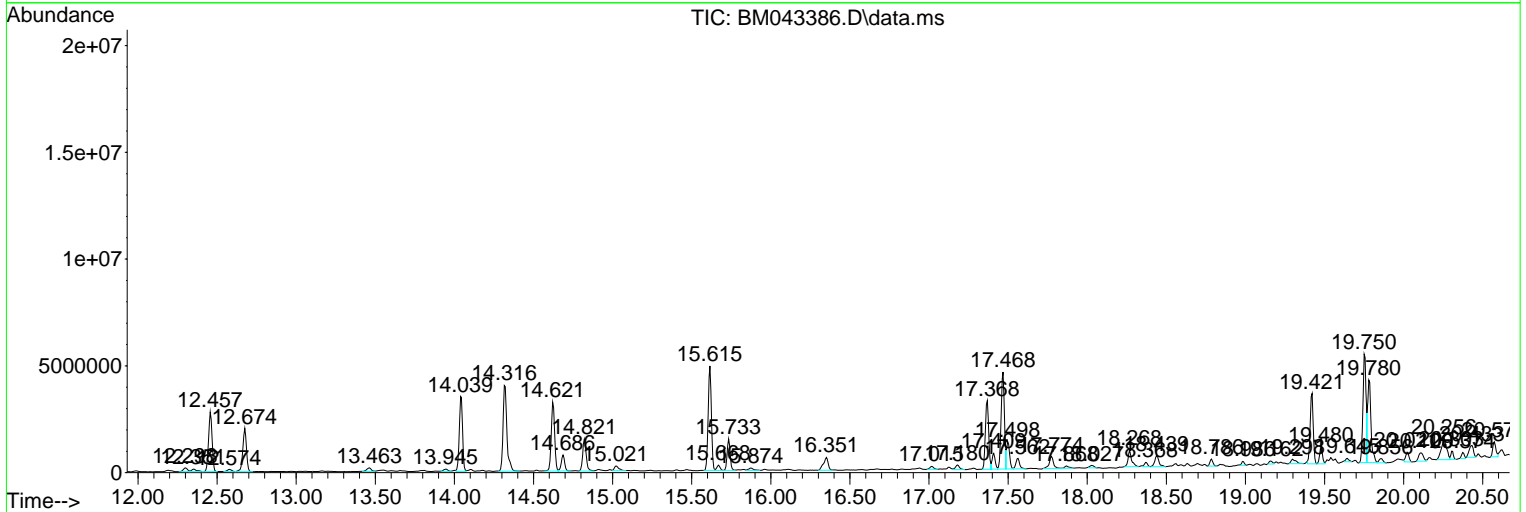
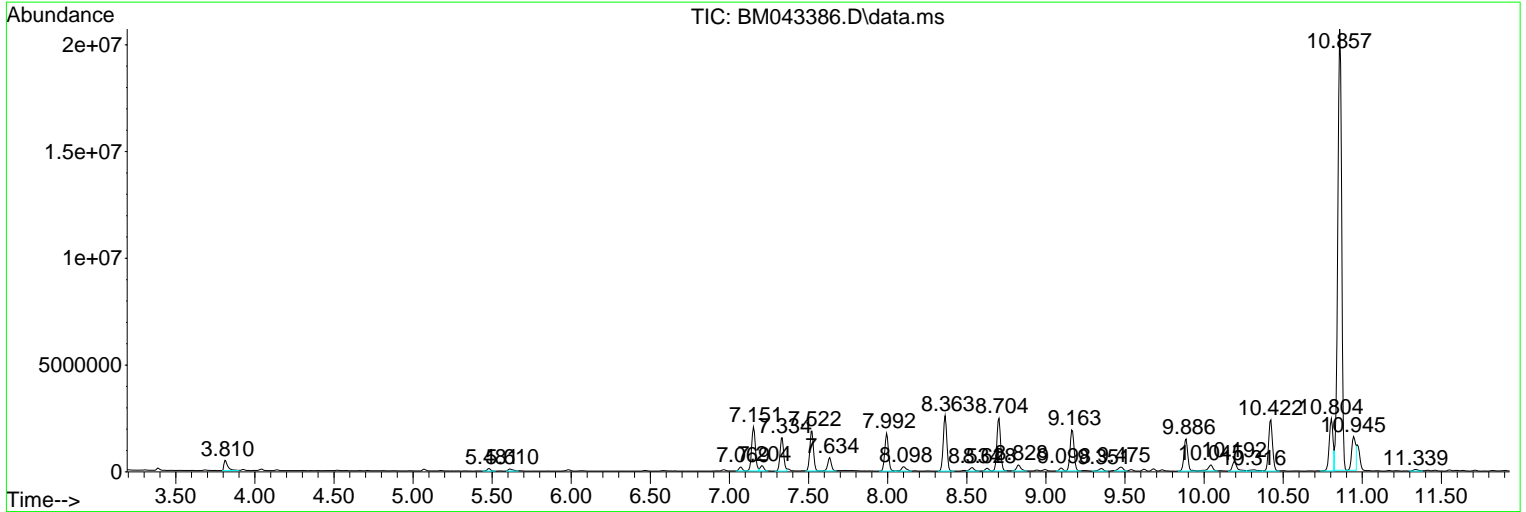
Sum of corrected areas: 234538270

Data Path : Z:\svoasrv\HPCHEM1\BNA_M\Data\BM121823\
 Data File : BM043386.D
 Acq On : 18 Dec 2023 10:50
 Operator : MA/JU
 Sample : 05626-16
 Misc :
 ALS Vial : 4 Sample Multiplier: 1

Instrument :
 BNA_M
ClientSampleId :
 DCLG2

Quant Method : Z:\svoasrv\HPCHEM1\BNA_M\Methods\SFAM-EPA-BM121523.MA.M
 Quant Title : SVOA CALIBRATION

TIC Library : C:\Database\NIST20.L
 TIC Integration Parameters: LSCINT.P



Data Path : Z:\svoasrv\HPCHEM1\BNA_M\Data\BM121823\
 Data File : BM043386.D
 Acq On : 18 Dec 2023 10:50
 Operator : MA/JU
 Sample : 05626-16
 Misc :
 ALS Vial : 4 Sample Multiplier: 1

Instrument :
 BNA_M
 ClientSampleId :
 DCLG2

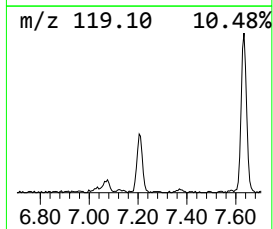
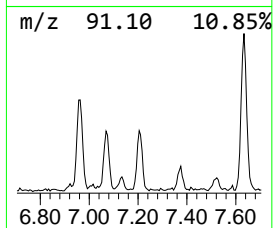
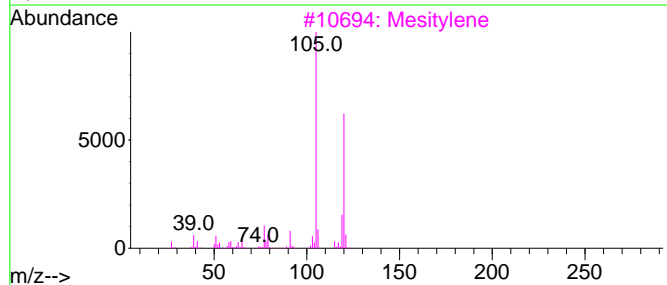
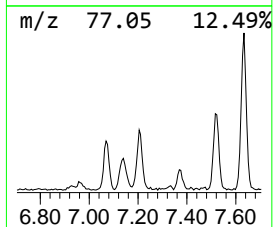
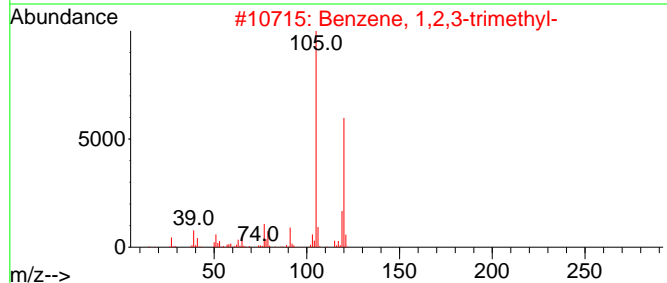
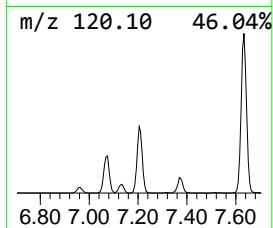
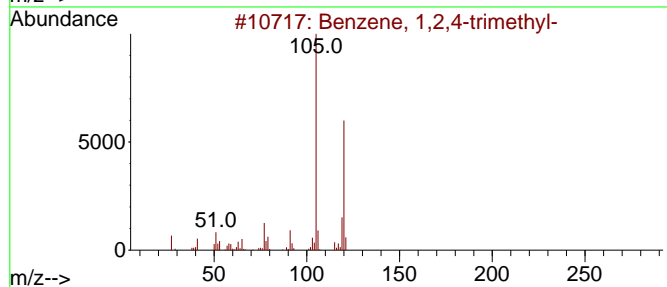
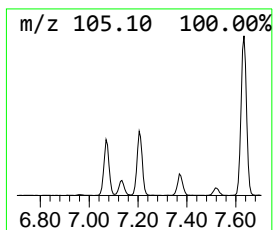
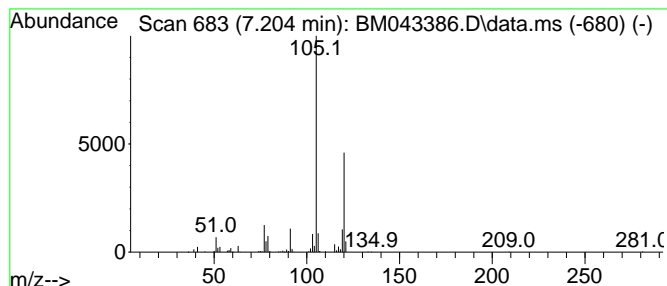
Quant Method : Z:\svoasrv\HPCHEM1\BNA_M\Methods\SFAM-EPA-BM121523.MA.M
 Quant Title : SVOA CALIBRATION

TIC Library : C:\Database\NIST20.L
 TIC Integration Parameters: LSCINT.P

 Peak Number 1 Benzene, 1,2,4-trimethyl- Concentration Rank 20

R.T.	EstConc	Area	Relative to ISTD	R.T.
7.204	2.71 ng/ul	388819	1,4-Dichlorobenzene-d4	7.992

Hit#	of	5	Tentative ID	MW	MolForm	CAS#	Qual
1			Benzene, 1,2,4-trimethyl-	120	C9H12	000095-63-6	95
2			Benzene, 1,2,3-trimethyl-	120	C9H12	000526-73-8	94
3			Mesitylene	120	C9H12	000108-67-8	94
4			Mesitylene	120	C9H12	000108-67-8	93
5			Benzene, 1,2,4-trimethyl-	120	C9H12	000095-63-6	93



Data Path : Z:\svoasrv\HPCHEM1\BNA_M\Data\BM121823\
 Data File : BM043386.D
 Acq On : 18 Dec 2023 10:50
 Operator : MA/JU
 Sample : 05626-16
 Misc :
 ALS Vial : 4 Sample Multiplier: 1

Instrument :
 BNA_M
 ClientSampleId :
 DCLG2

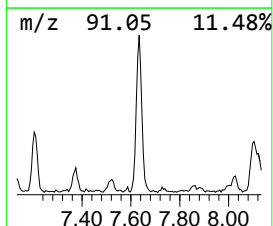
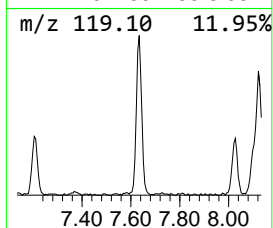
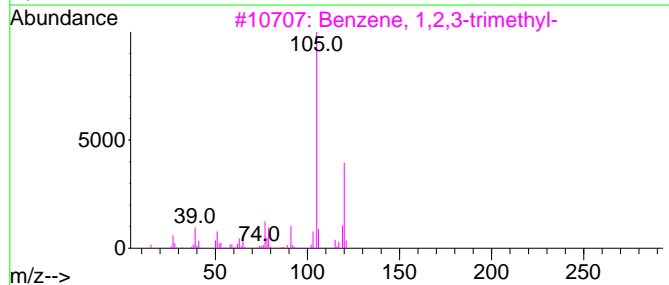
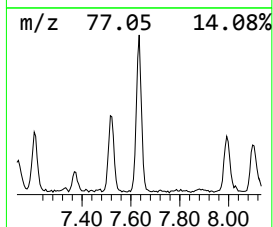
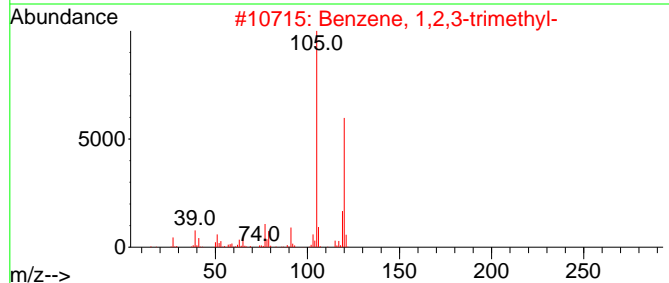
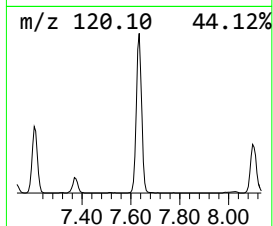
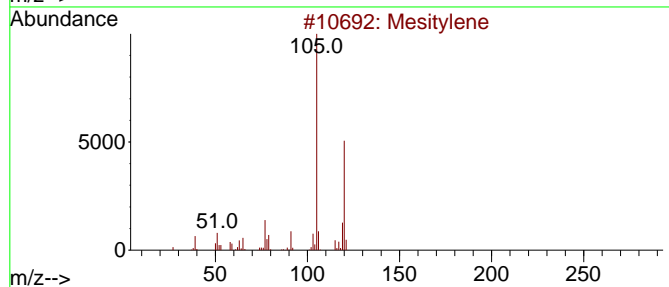
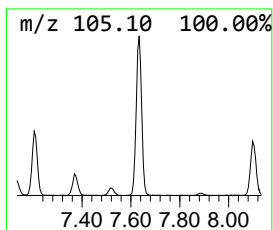
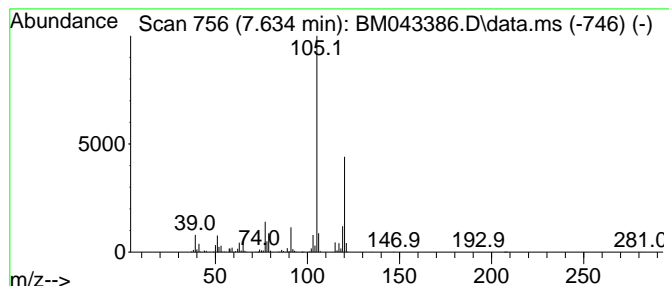
Quant Method : Z:\svoasrv\HPCHEM1\BNA_M\Methods\SFAM-EPA-BM121523.MA.M
 Quant Title : SVOA CALIBRATION

TIC Library : C:\Database\NIST20.L
 TIC Integration Parameters: LSCINT.P

 Peak Number 2 Mesitylene Concentration Rank 5

R.T.	EstConc	Area	Relative to ISTD	R.T.
7.634	7.09 ng/ul	1016310	1,4-Dichlorobenzene-d4	7.992

Hit#	of	Tentative ID	MW	MolForm	CAS#	Qual
1	5	Mesitylene	120	C9H12	000108-67-8	97
2		Benzene, 1,2,3-trimethyl-	120	C9H12	000526-73-8	95
3		Benzene, 1,2,3-trimethyl-	120	C9H12	000526-73-8	95
4		Benzene, 1,2,4-trimethyl-	120	C9H12	000095-63-6	94
5		Benzene, 1,2,4-trimethyl-	120	C9H12	000095-63-6	94



Data Path : Z:\svoasrv\HPCHEM1\BNA_M\Data\BM121823\
 Data File : BM043386.D
 Acq On : 18 Dec 2023 10:50
 Operator : MA/JU
 Sample : 05626-16
 Misc :
 ALS Vial : 4 Sample Multiplier: 1

Instrument :
 BNA_M
 ClientSampleId :
 DCLG2

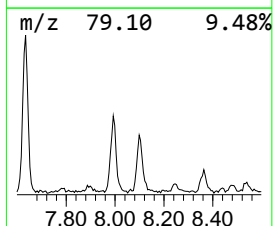
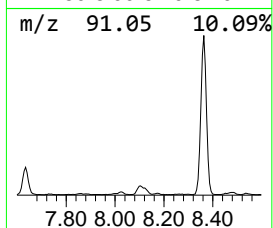
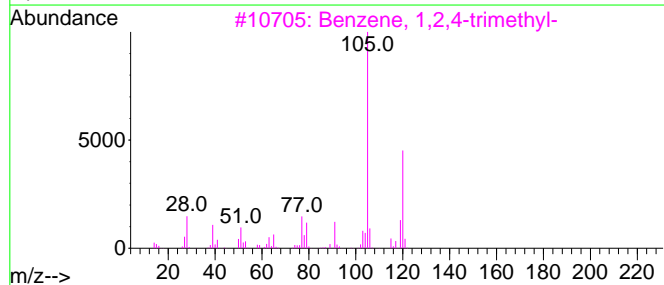
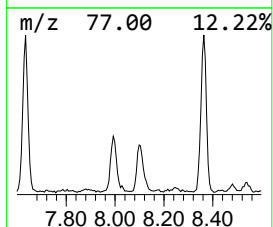
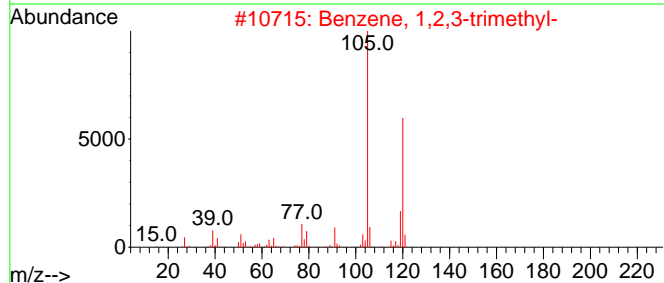
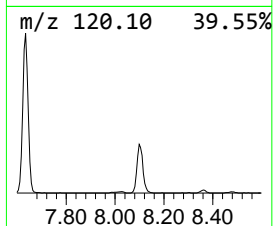
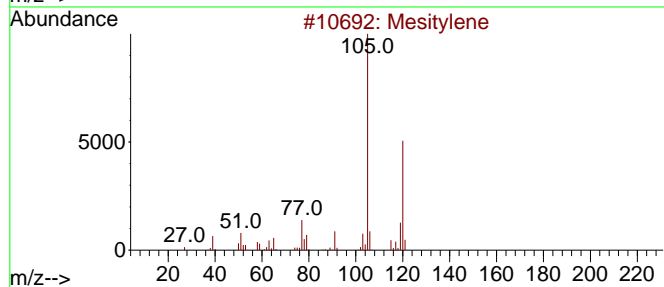
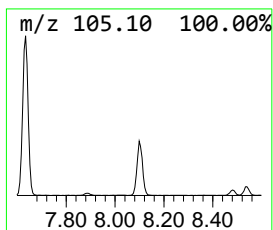
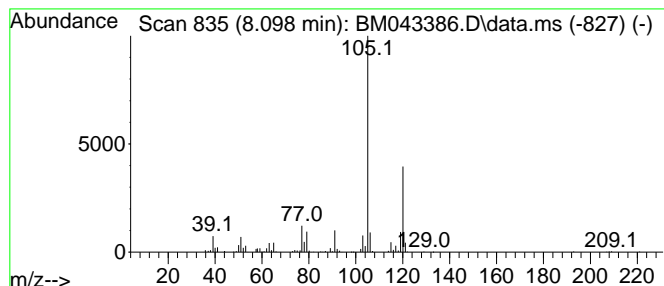
Quant Method : Z:\svoasrv\HPCHEM1\BNA_M\Methods\SFAM-EPA-BM121523.MA.M
 Quant Title : SVOA CALIBRATION

TIC Library : C:\Database\NIST20.L
 TIC Integration Parameters: LSCINT.P

 Peak Number 3 Benzene, 1,2,3-trimethyl- Concentration Rank 18

R.T.	EstConc	Area	Relative to ISTD	R.T.
8.098	3.01 ng/ul	431501	1,4-Dichlorobenzene-d4	7.992

Hit#	of	5	Tentative ID	MW	MolForm	CAS#	Qual
1			Mesitylene	120	C9H12	000108-67-8	97
2			Benzene, 1,2,3-trimethyl-	120	C9H12	000526-73-8	95
3			Benzene, 1,2,4-trimethyl-	120	C9H12	000095-63-6	94
4			Benzene, 1,2,3-trimethyl-	120	C9H12	000526-73-8	93
5			Mesitylene	120	C9H12	000108-67-8	91



Data Path : Z:\svoasrv\HPCHEM1\BNA_M\Data\BM121823\
 Data File : BM043386.D
 Acq On : 18 Dec 2023 10:50
 Operator : MA/JU
 Sample : 05626-16
 Misc :
 ALS Vial : 4 Sample Multiplier: 1

Instrument :
 BNA_M
 ClientSampleId :
 DCLG2

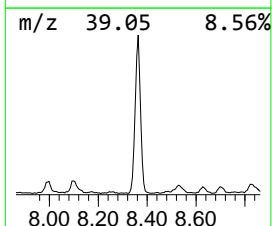
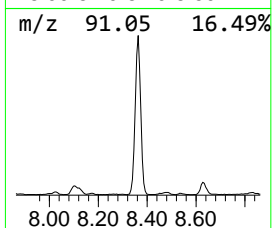
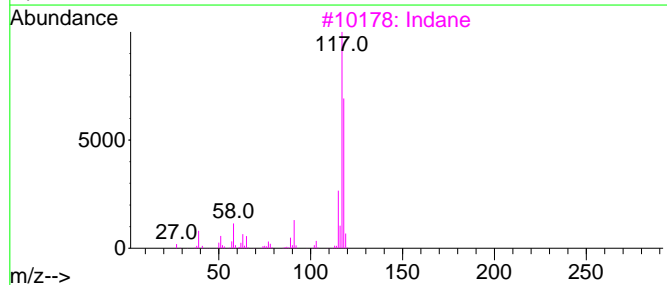
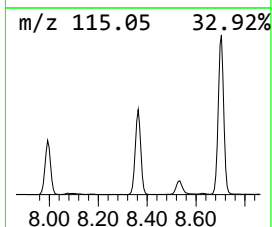
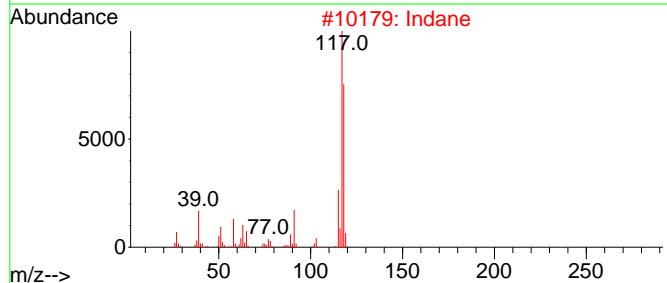
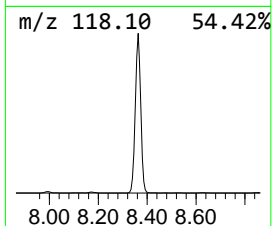
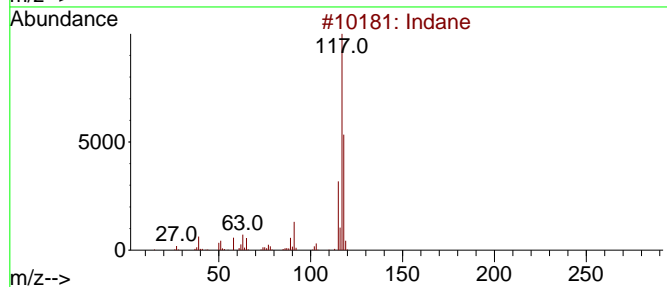
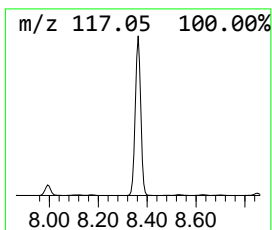
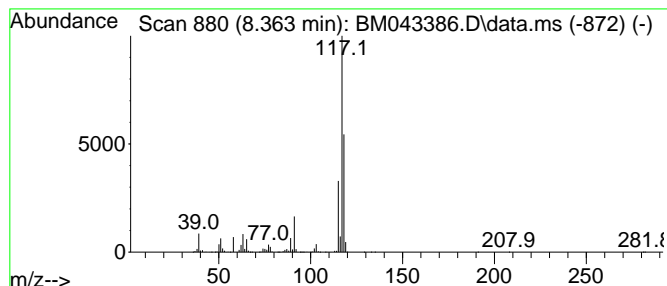
Quant Method : Z:\svoasrv\HPCHEM1\BNA_M\Methods\SFAM-EPA-BM121523.MA.M
 Quant Title : SVOA CALIBRATION

TIC Library : C:\Database\NIST20.L
 TIC Integration Parameters: LSCINT.P

 Peak Number 4 Indane Concentration Rank 2

R.T.	EstConc	Area	Relative to ISTD	R.T.
8.363	28.53 ng/ul	4092190	1,4-Dichlorobenzene-d4	7.992

Hit#	of	5	Tentative ID	MW	MolForm	CAS#	Qual
1			Indane	118	C9H10	000496-11-7	93
2			Indane	118	C9H10	000496-11-7	91
3			Indane	118	C9H10	000496-11-7	83
4			Deltacyclene	118	C9H10	007785-10-6	72
5			Benzene, 1-ethenyl-2-methyl-	118	C9H10	000611-15-4	60



Data Path : Z:\svoasrv\HPCHEM1\BNA_M\Data\BM121823\
 Data File : BM043386.D
 Acq On : 18 Dec 2023 10:50
 Operator : MA/JU
 Sample : 05626-16
 Misc :
 ALS Vial : 4 Sample Multiplier: 1

Instrument :
 BNA_M
 ClientSampleId :
 DCLG2

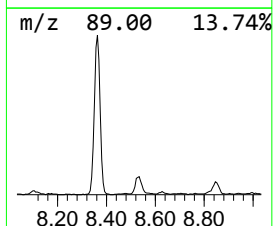
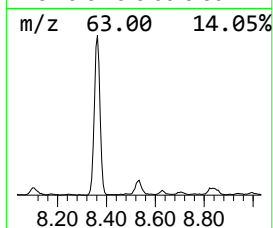
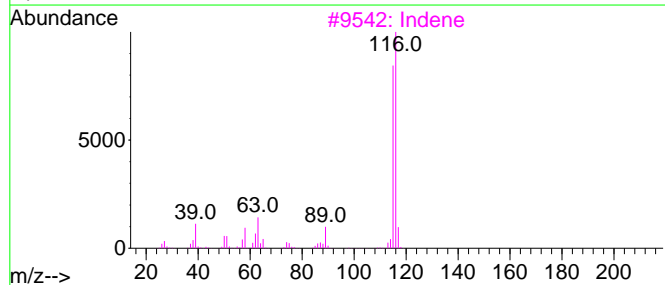
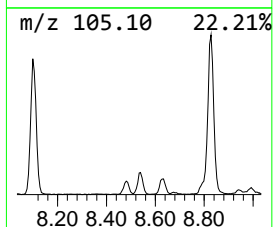
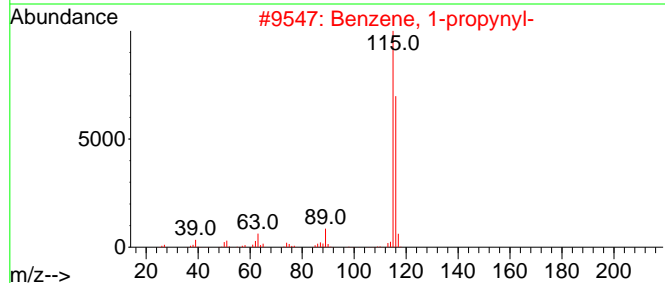
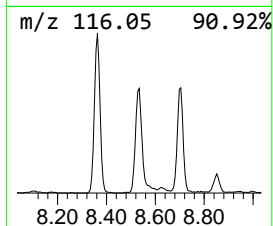
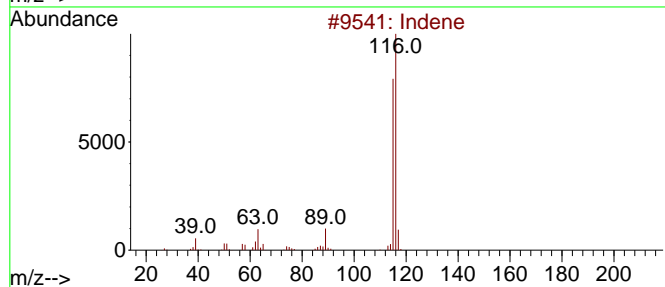
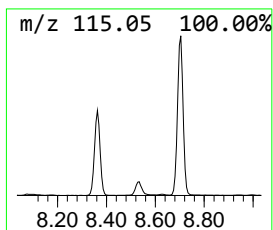
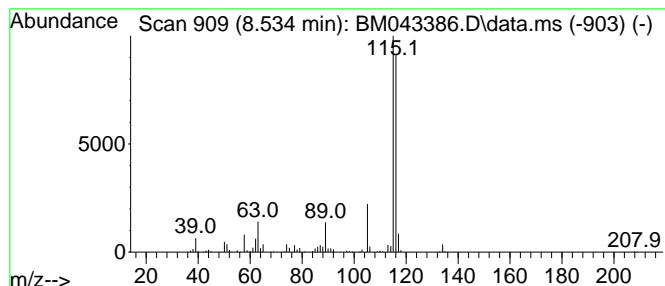
Quant Method : Z:\svoasrv\HPCHEM1\BNA_M\Methods\SFAM-EPA-BM121523.MA.M
 Quant Title : SVOA CALIBRATION

TIC Library : C:\Database\NIST20.L
 TIC Integration Parameters: LSCINT.P

 Peak Number 5 Indene Concentration Rank 23

R.T.	EstConc	Area	Relative to ISTD	R.T.
8.534	2.05 ng/ul	294204	1,4-Dichlorobenzene-d4	7.992

Hit#	of	5	Tentative ID	MW	MolForm	CAS#	Qual
1			Indene	116	C9H8	000095-13-6	95
2			Benzene, 1-propynyl-	116	C9H8	000673-32-5	93
3			Indene	116	C9H8	000095-13-6	92
4			2-Methylphenylacetylene	116	C9H8	000766-47-2	87
5			Benzene, 1,2-propadienyl-	116	C9H8	002327-99-3	87



Data Path : Z:\svoasrv\HPCHEM1\BNA_M\Data\BM121823\
 Data File : BM043386.D
 Acq On : 18 Dec 2023 10:50
 Operator : MA/JU
 Sample : 05626-16
 Misc :
 ALS Vial : 4 Sample Multiplier: 1

Instrument :
 BNA_M
 ClientSampleId :
 DCLG2

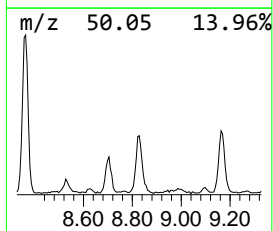
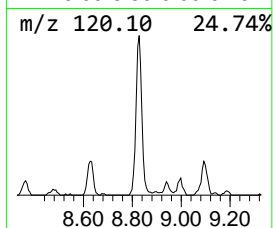
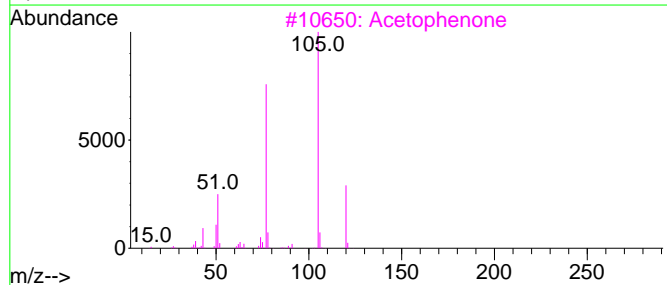
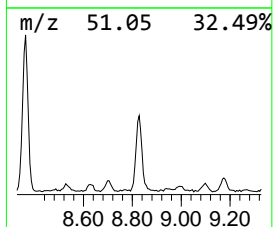
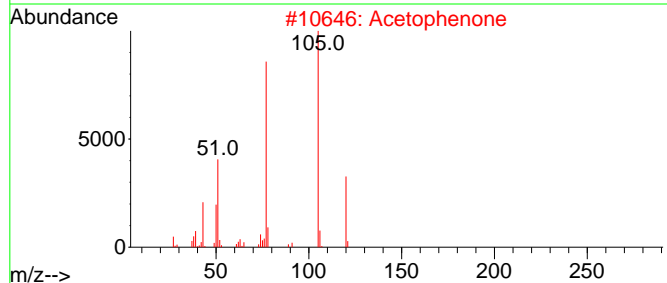
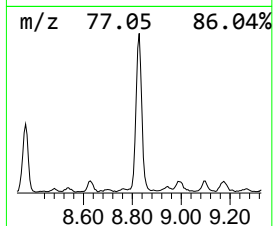
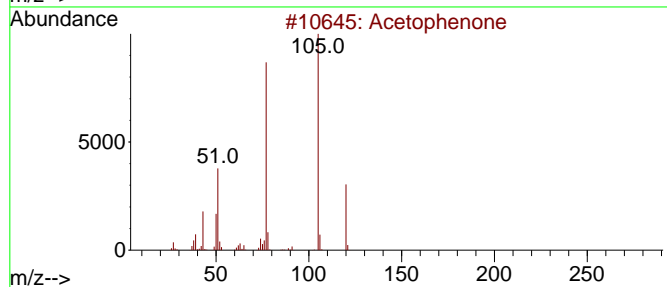
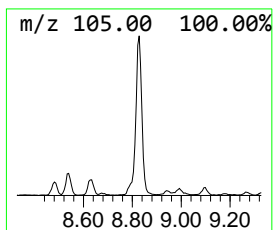
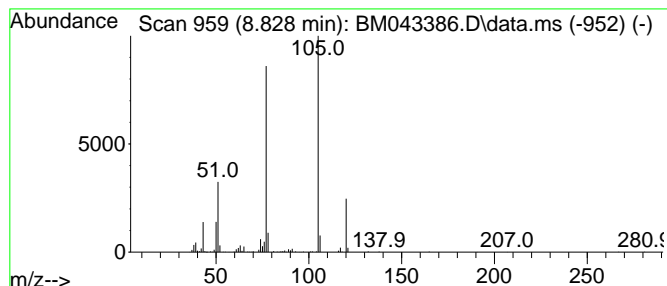
Quant Method : Z:\svoasrv\HPCHEM1\BNA_M\Methods\SFAM-EPA-BM121523.MA.M
 Quant Title : SVOA CALIBRATION

TIC Library : C:\Database\NIST20.L
 TIC Integration Parameters: LSCINT.P

 Peak Number 6 Aceto phenone Concentration Rank 14

R.T.	EstConc	Area	Relative to ISTD	R.T.
8.828	3.79 ng/ul	544288	1,4-Dichlorobenzene-d4	7.992

Hit#	of	5	Tentative ID	MW	MolForm	CAS#	Qual
1			Acetophenone	120	C8H8O	000098-86-2	97
2			Acetophenone	120	C8H8O	000098-86-2	95
3			Acetophenone	120	C8H8O	000098-86-2	94
4			Acetophenone	120	C8H8O	000098-86-2	94
5			Acetophenone	120	C8H8O	000098-86-2	94



Data Path : Z:\svoasrv\HPCHEM1\BNA_M\Data\BM121823\
 Data File : BM043386.D
 Acq On : 18 Dec 2023 10:50
 Operator : MA/JU
 Sample : 05626-16
 Misc :
 ALS Vial : 4 Sample Multiplier: 1

Instrument :
 BNA_M
 ClientSampleId :
 DCLG2

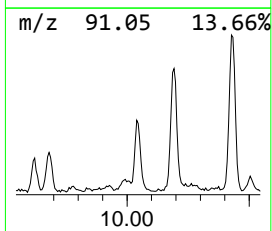
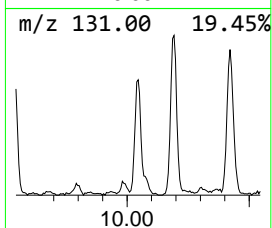
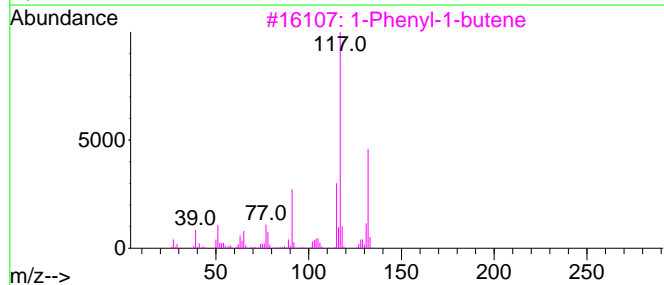
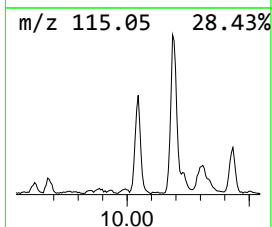
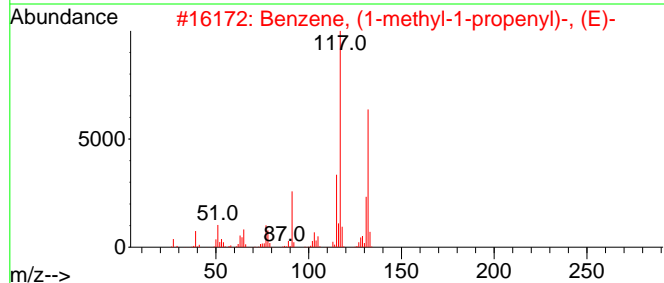
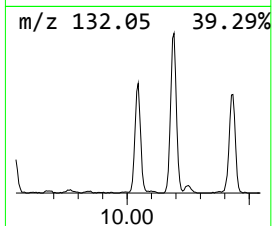
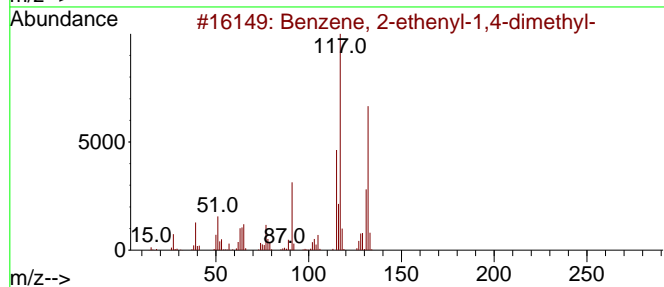
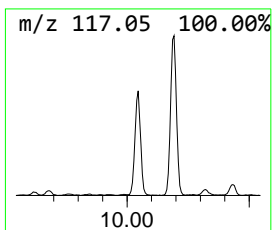
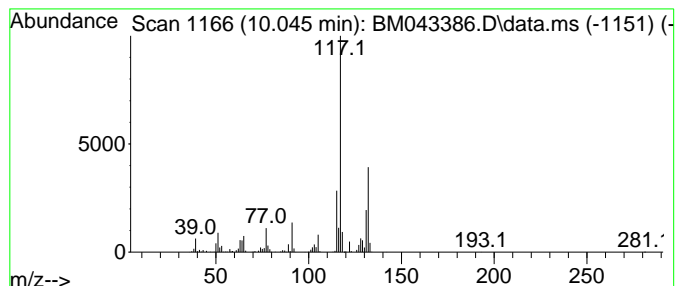
Quant Method : Z:\svoasrv\HPCHEM1\BNA_M\Methods\SFAM-EPA-BM121523.MA.M
 Quant Title : SVOA CALIBRATION

TIC Library : C:\Database\NIST20.L
 TIC Integration Parameters: LSCINT.P

 Peak Number 7 Benzene, 2-ethenyl-1,4-dime... Concentration Rank 19

R.T.	EstConc	Area	Relative to ISTD	R.T.
10.045	2.77 ng/ul	580371	Naphthalene-d8	10.804

Hit#	of	5	Tentative ID	MW	MolForm	CAS#	Qual
1			Benzene, 2-ethenyl-1,4-dimethyl-	132	C10H12	002039-89-6	96
2			Benzene, (1-methyl-1-propenyl)-,...	132	C10H12	000768-00-3	94
3			1-Phenyl-1-butene	132	C10H12	000824-90-8	93
4			1H-Indene, 2,3-dihydro-5-methyl-	132	C10H12	000874-35-1	92
5			3-Phenylbut-1-ene	132	C10H12	000934-10-1	91



Data Path : Z:\svoasrv\HPCHEM1\BNA_M\Data\BM121823\
 Data File : BM043386.D
 Acq On : 18 Dec 2023 10:50
 Operator : MA/JU
 Sample : 05626-16
 Misc :
 ALS Vial : 4 Sample Multiplier: 1

Instrument :
 BNA_M
 ClientSampleId :
 DCLG2

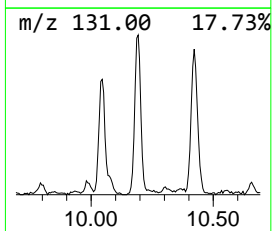
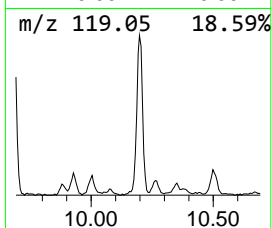
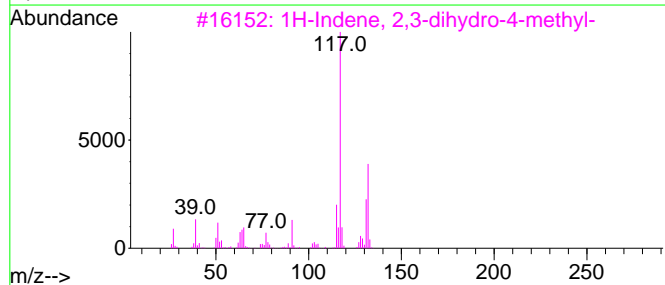
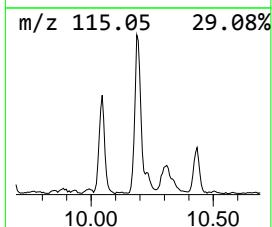
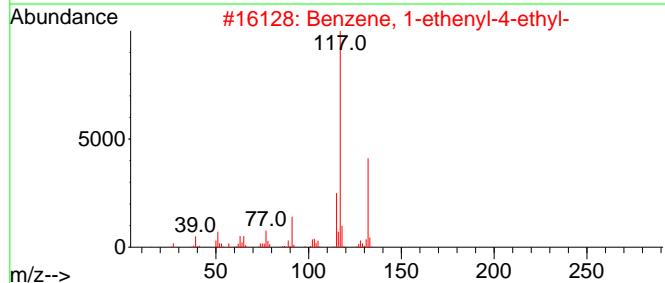
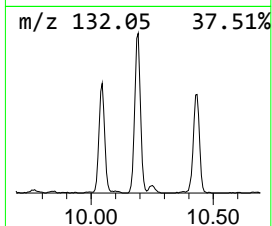
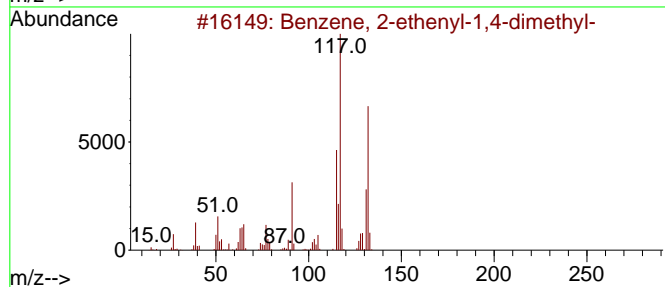
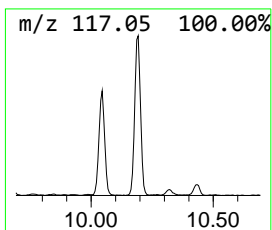
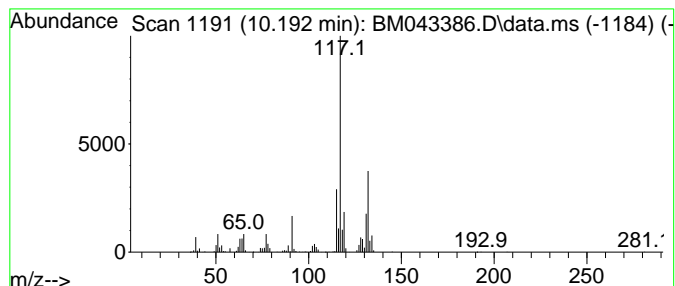
Quant Method : Z:\svoasrv\HPCHEM1\BNA_M\Methods\SFAM-EPA-BM121523.MA.M
 Quant Title : SVOA CALIBRATION

TIC Library : C:\Database\NIST20.L
 TIC Integration Parameters: LSCINT.P

 Peak Number 8 Benzene, 1-ethenyl-4-ethyl- Concentration Rank 11

R.T.	EstConc	Area	Relative to ISTD	R.T.
10.192	4.33 ng/ul	907313	Naphthalene-d8	10.804

Hit#	of 5	Tentative ID	MW	MolForm	CAS#	Qual
1		Benzene, 2-ethenyl-1,4-dimethyl-	132	C10H12	002039-89-6	96
2		Benzene, 1-ethenyl-4-ethyl-	132	C10H12	003454-07-7	94
3		1H-Indene, 2,3-dihydro-4-methyl-	132	C10H12	000824-22-6	93
4		Benzene, 2-butenyl-	132	C10H12	001560-06-1	90
5		Indan, 1-methyl-	132	C10H12	000767-58-8	90



Data Path : Z:\svoasrv\HPCHEM1\BNA_M\Data\BM121823\
 Data File : BM043386.D
 Acq On : 18 Dec 2023 10:50
 Operator : MA/JU
 Sample : 05626-16
 Misc :
 ALS Vial : 4 Sample Multiplier: 1

Instrument :
 BNA_M
 ClientSampleId :
 DCLG2

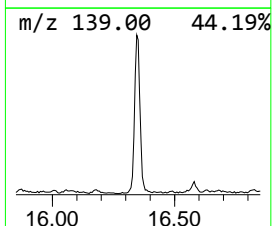
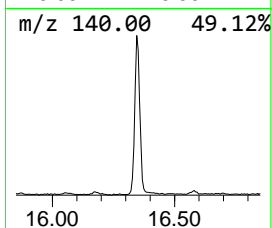
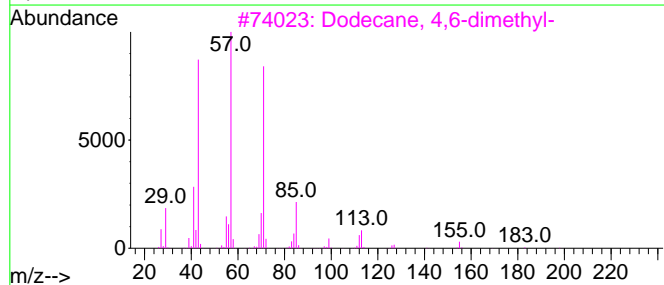
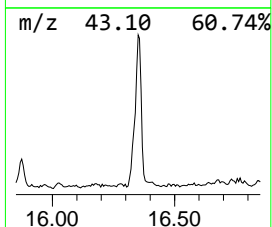
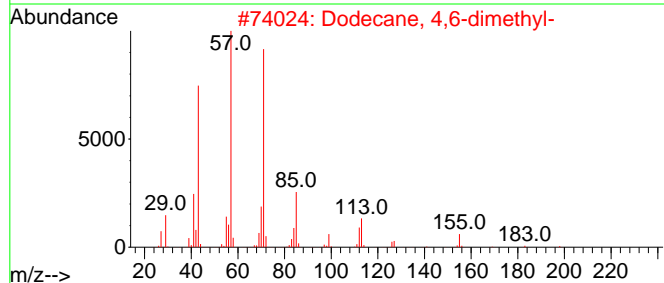
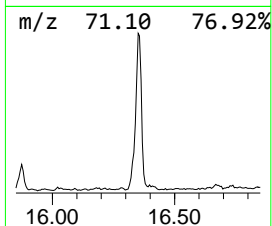
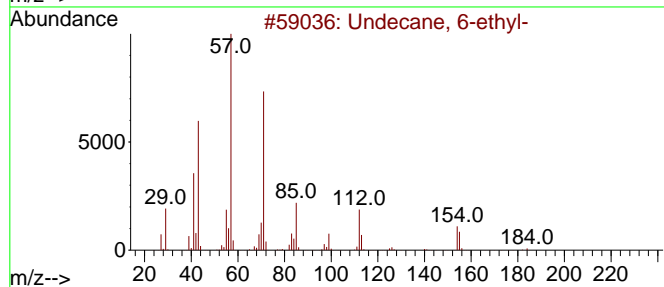
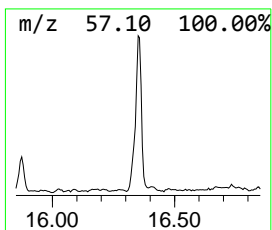
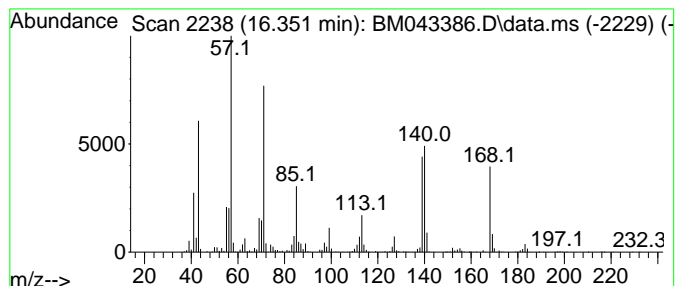
Quant Method : Z:\svoasrv\HPCHEM1\BNA_M\Methods\SFAM-EPA-BM121523.MA.M
 Quant Title : SVOA CALIBRATION

TIC Library : C:\Database\NIST20.L
 TIC Integration Parameters: LSCINT.P

 Peak Number 9 (DEL) Alkane: Straight-Chai... Concentration Rank 7

R.T.	EstConc	Area	Relative to ISTD	R.T.
16.351	5.29 ng/ul	1249440	Phenanthrene-d10	17.368

Hit#	of 5	Tentative ID	MW	MolForm	CAS#	Qual
1		Undecane, 6-ethyl-	184	C13H28	017312-60-6	50
2		Dodecane, 4,6-dimethyl-	198	C14H30	061141-72-8	46
3		Dodecane, 4,6-dimethyl-	198	C14H30	061141-72-8	45
4		Decane, 2-methyl-	156	C11H24	006975-98-0	45
5		Decane, 5-propyl-	184	C13H28	017312-62-8	45



Data Path : Z:\svoasrv\HPCHEM1\BNA_M\Data\BM121823\
 Data File : BM043386.D
 Acq On : 18 Dec 2023 10:50
 Operator : MA/JU
 Sample : 05626-16
 Misc :
 ALS Vial : 4 Sample Multiplier: 1

Instrument :
 BNA_M
 ClientSampleId :
 DCLG2

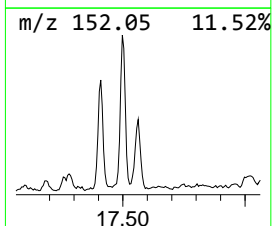
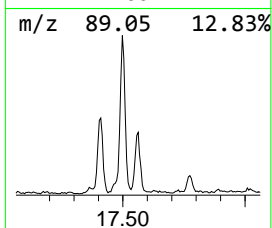
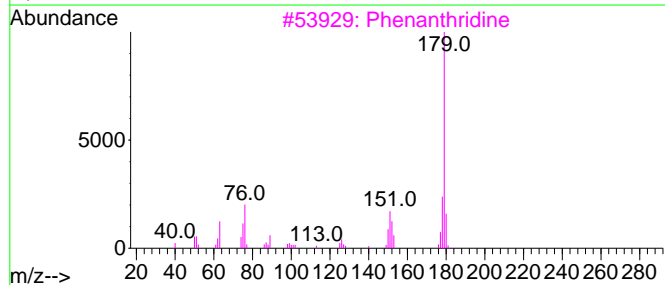
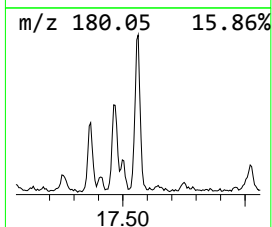
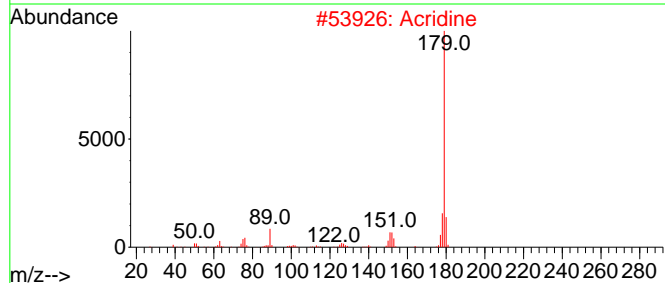
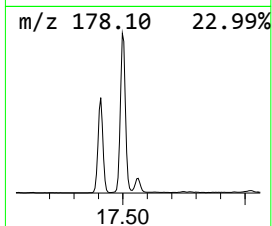
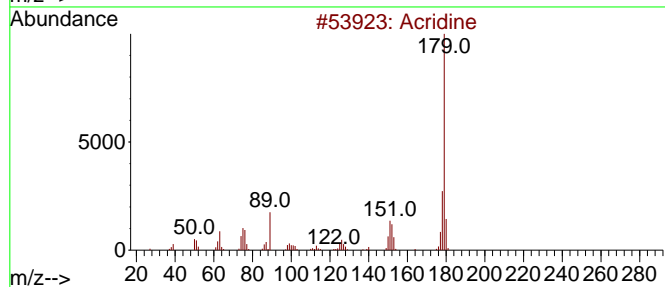
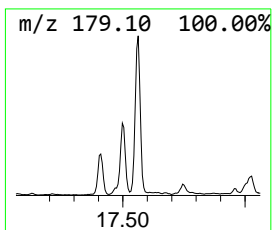
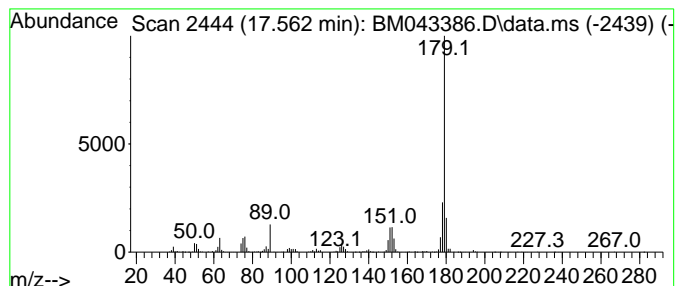
Quant Method : Z:\svoasrv\HPCHEM1\BNA_M\Methods\SFAM-EPA-BM121523.MA.M
 Quant Title : SVOA CALIBRATION

TIC Library : C:\Database\NIST20.L
 TIC Integration Parameters: LSCINT.P

 Peak Number 10 Acridine Concentration Rank 15

R.T.	EstConc	Area	Relative to ISTD	R.T.
17.562	3.42 ng/ul	806413	Phenanthrene-d10	17.368

Hit#	of 5	Tentative ID	MW	MolForm	CAS#	Qual
1		Acridine	179	C13H9N	000260-94-6	96
2		Acridine	179	C13H9N	000260-94-6	96
3		Phenanthridine	179	C13H9N	000229-87-8	95
4		Acridine	179	C13H9N	000260-94-6	94
5		Acridine	179	C13H9N	000260-94-6	94



Data Path : Z:\svoasrv\HPCHEM1\BNA_M\Data\BM121823\
 Data File : BM043386.D
 Acq On : 18 Dec 2023 10:50
 Operator : MA/JU
 Sample : 05626-16
 Misc :
 ALS Vial : 4 Sample Multiplier: 1

Instrument :
 BNA_M
 ClientSampleId :
 DCLG2

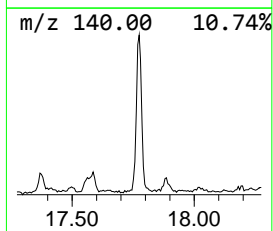
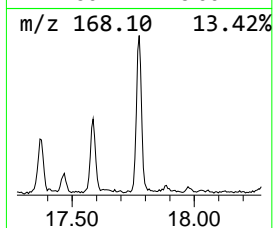
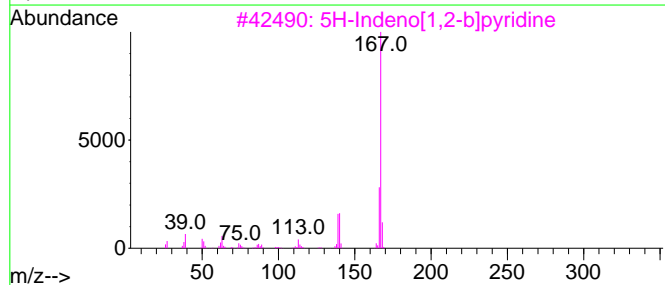
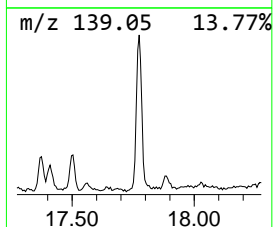
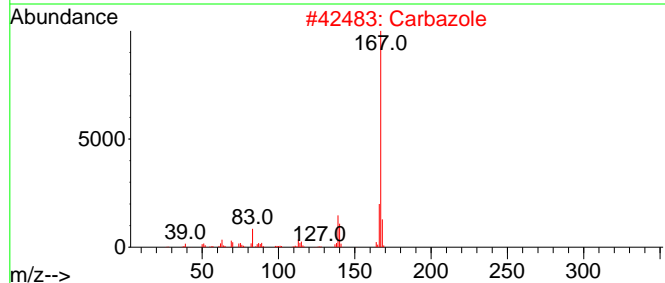
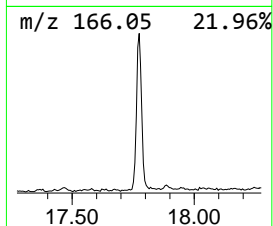
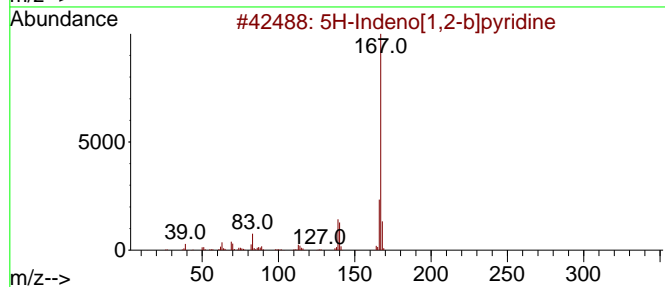
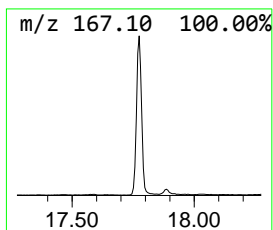
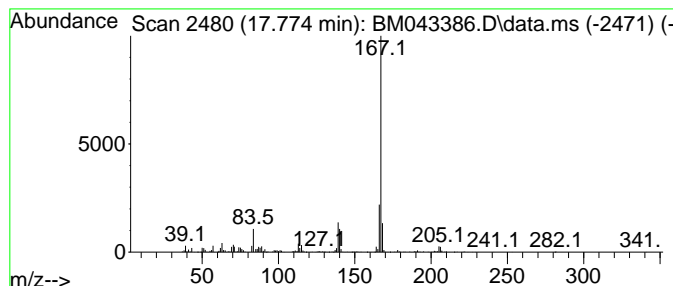
Quant Method : Z:\svoasrv\HPCHEM1\BNA_M\Methods\SFAM-EPA-BM121523.MA.M
 Quant Title : SVOA CALIBRATION

TIC Library : C:\Database\NIST20.L
 TIC Integration Parameters: LSCINT.P

 Peak Number 11 5H-Indeno[1,2-b]pyridine Concentration Rank 9

R.T.	EstConc	Area	Relative to ISTD	R.T.
17.774	4.78 ng/ul	1127790	Phenanthrene-d10	17.368

Hit#	of	5	Tentative ID	MW	MolForm	CAS#	Qual
1			5H-Indeno[1,2-b]pyridine	167	C12H9N	000244-99-5	95
2			Carbazole	167	C12H9N	000086-74-8	95
3			5H-Indeno[1,2-b]pyridine	167	C12H9N	000244-99-5	90
4			Carbazole	167	C12H9N	000086-74-8	87
5			9H-Carbazole-9-methanol	197	C13H11NO	002409-36-1	87



Data Path : Z:\svoasrv\HPCHEM1\BNA_M\Data\BM121823\
 Data File : BM043386.D
 Acq On : 18 Dec 2023 10:50
 Operator : MA/JU
 Sample : 05626-16
 Misc :
 ALS Vial : 4 Sample Multiplier: 1

Instrument :
 BNA_M
 ClientSampleId :
 DCLG2

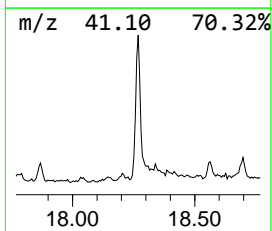
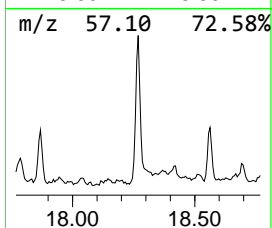
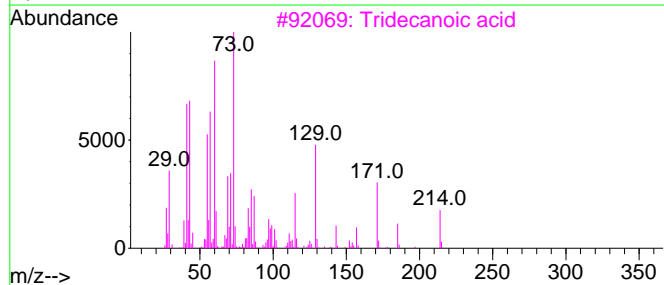
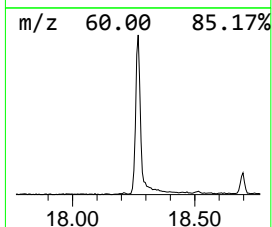
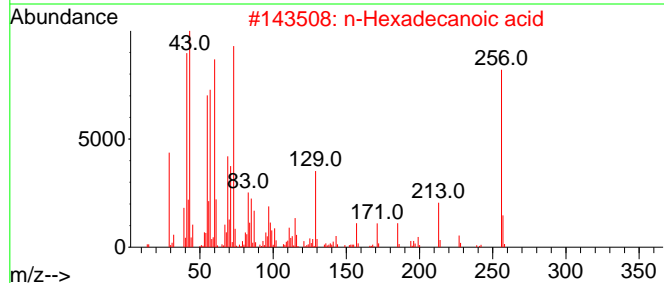
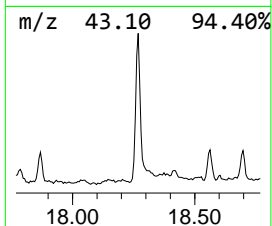
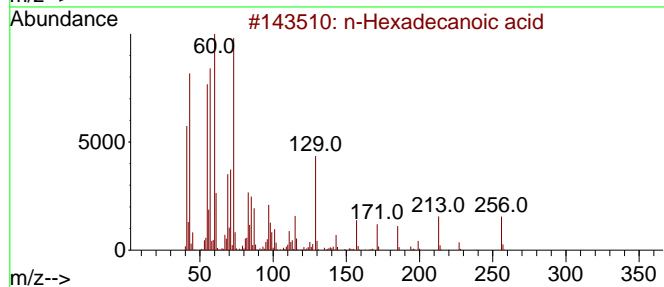
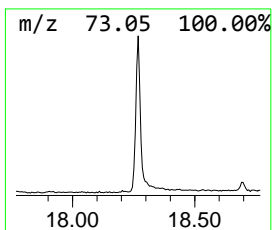
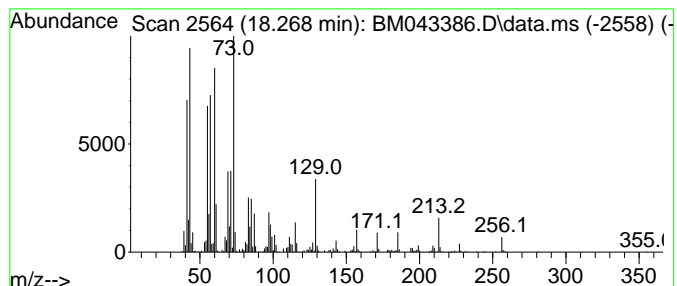
Quant Method : Z:\svoasrv\HPCHEM1\BNA_M\Methods\SFAM-EPA-BM121523.MA.M
 Quant Title : SVOA CALIBRATION

TIC Library : C:\Database\NIST20.L
 TIC Integration Parameters: LSCINT.P

 Peak Number 12 n-Hexadecanoic acid Concentration Rank 8

R.T.	EstConc	Area	Relative to ISTD	R.T.
18.268	5.22 ng/ul	1232150	Phenanthrene-d10	17.368

Hit#	of 5	Tentative ID	MW	MolForm	CAS#	Qual
1		n-Hexadecanoic acid	256	C16H32O2	000057-10-3	99
2		n-Hexadecanoic acid	256	C16H32O2	000057-10-3	99
3		Tridecanoic acid	214	C13H26O2	000638-53-9	94
4		n-Hexadecanoic acid	256	C16H32O2	000057-10-3	94
5		Tetradecanoic acid	228	C14H28O2	000544-63-8	91



Data Path : Z:\svoasrv\HPCHEM1\BNA_M\Data\BM121823\
 Data File : BM043386.D
 Acq On : 18 Dec 2023 10:50
 Operator : MA/JU
 Sample : 05626-16
 Misc :
 ALS Vial : 4 Sample Multiplier: 1

Instrument :
 BNA_M
 ClientSampleId :
 DCLG2

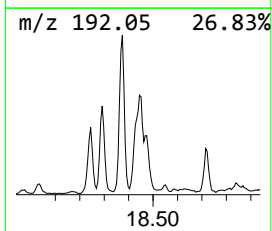
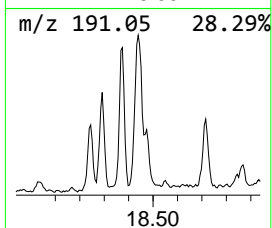
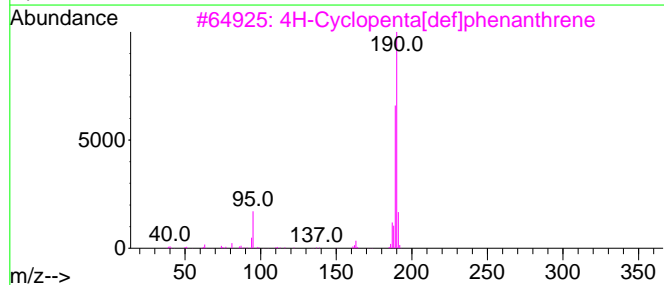
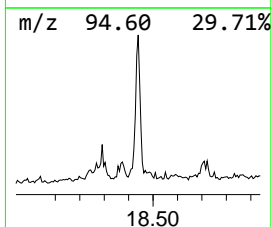
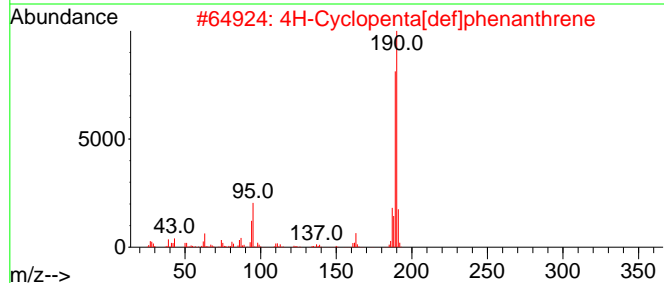
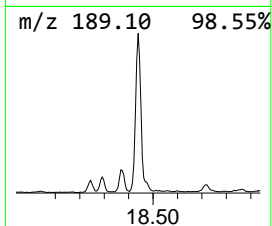
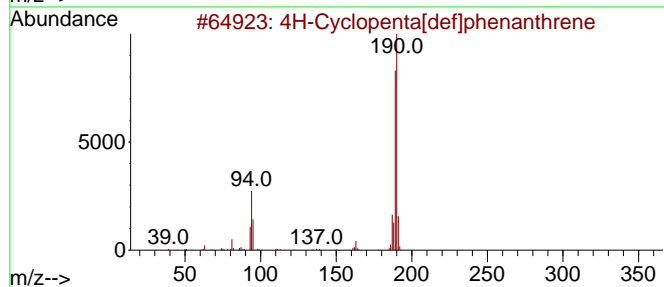
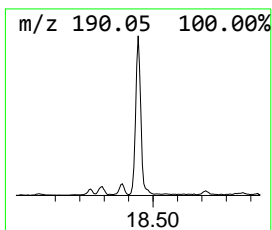
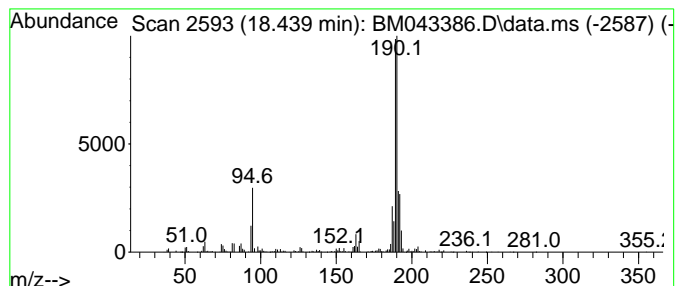
Quant Method : Z:\svoasrv\HPCHEM1\BNA_M\Methods\SFAM-EPA-BM121523.MA.M
 Quant Title : SVOA CALIBRATION

TIC Library : C:\Database\NIST20.L
 TIC Integration Parameters: LSCINT.P

 Peak Number 13 4H-Cyclopenta[def]phenanthrene Concentration Rank 13

R.T.	EstConc	Area	Relative to ISTD	R.T.
18.439	4.07 ng/ul	960838	Phenanthrene-d10	17.368

Hit#	of	5	Tentative ID	MW	MolForm	CAS#	Qual
1			4H-Cyclopenta[def]phenanthrene	190	C15H10	000203-64-5	87
2			4H-Cyclopenta[def]phenanthrene	190	C15H10	000203-64-5	70
3			4H-Cyclopenta[def]phenanthrene	190	C15H10	000203-64-5	64
4			Thiophene-3-carboxaldehyde, 5-ch...	190	C5H4BClO3S	036155-87-0	49
5			6H-Cyclobuta[jk]phenanthrene	190	C15H10	083469-43-6	45



Data Path : Z:\svoasrv\HPCHEM1\BNA_M\Data\BM121823\
 Data File : BM043386.D
 Acq On : 18 Dec 2023 10:50
 Operator : MA/JU
 Sample : 05626-16
 Misc :
 ALS Vial : 4 Sample Multiplier: 1

Instrument :
 BNA_M
 ClientSampleId :
 DCLG2

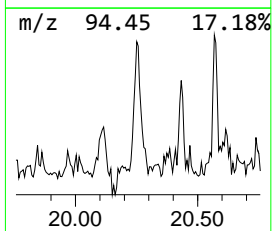
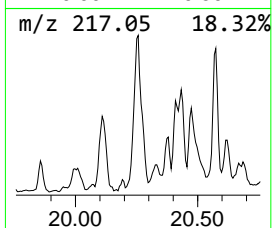
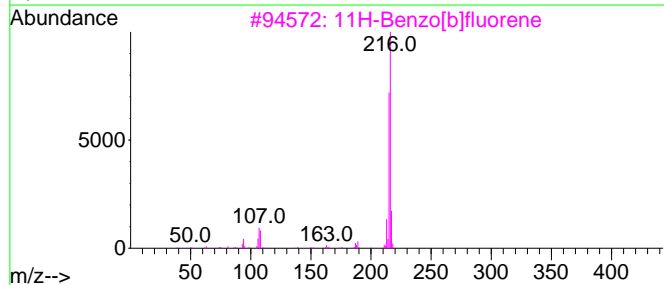
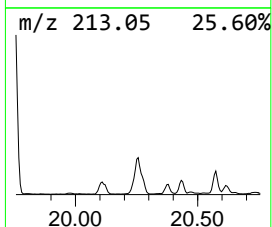
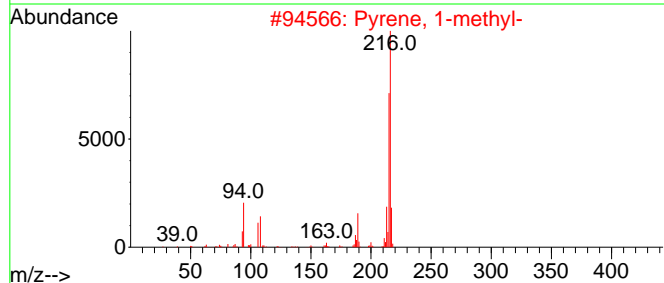
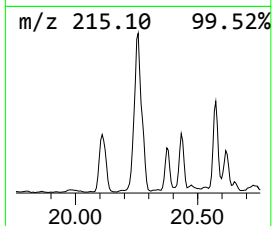
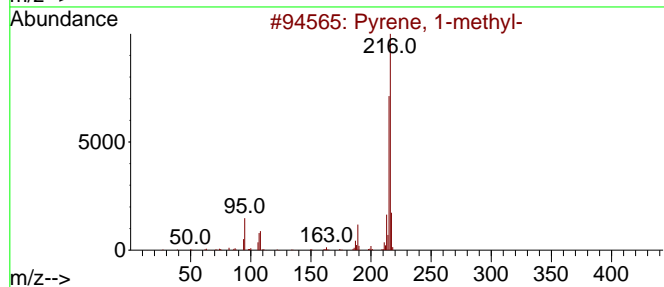
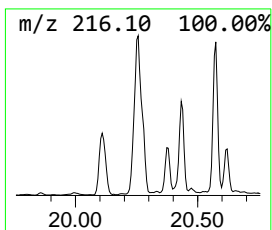
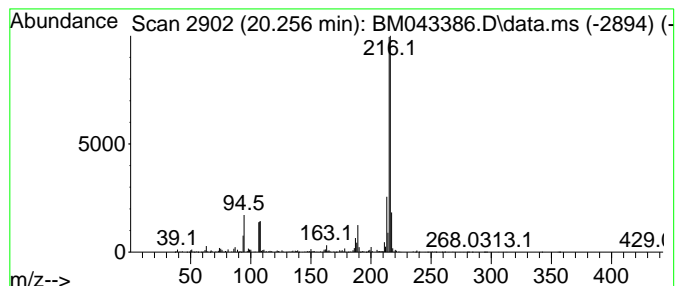
Quant Method : Z:\svoasrv\HPCHEM1\BNA_M\Methods\SFAM-EPA-BM121523.MA.M
 Quant Title : SVOA CALIBRATION

TIC Library : C:\Database\NIST20.L
 TIC Integration Parameters: LSCINT.P

 Peak Number 14 Pyrene, 1-methyl- Concentration Rank 10

R.T.	EstConc	Area	Relative to ISTD	R.T.
20.256	4.37 ng/ul	2254600	Chrysene-d12	21.544

Hit#	of	5	Tentative ID	MW	MolForm	CAS#	Qual
1			Pyrene, 1-methyl-	216	C17H12	002381-21-7	96
2			Pyrene, 1-methyl-	216	C17H12	002381-21-7	96
3			11H-Benzo[b]fluorene	216	C17H12	000243-17-4	93
4			Pyrene, 1-methyl-	216	C17H12	002381-21-7	92
5			Fluoranthene, 2-methyl-	216	C17H12	033543-31-6	89



Data Path : Z:\svoasrv\HPCHEM1\BNA_M\Data\BM121823\
 Data File : BM043386.D
 Acq On : 18 Dec 2023 10:50
 Operator : MA/JU
 Sample : 05626-16
 Misc :
 ALS Vial : 4 Sample Multiplier: 1

Instrument :
 BNA_M
 ClientSampleId :
 DCLG2

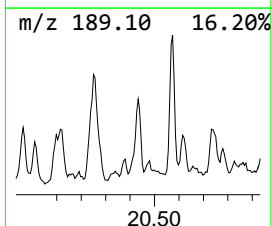
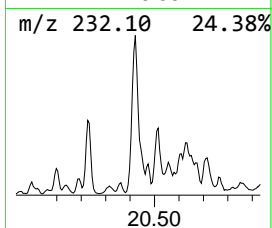
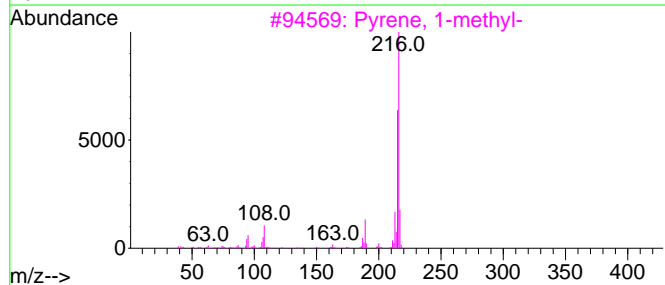
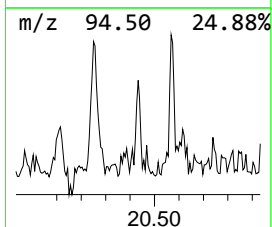
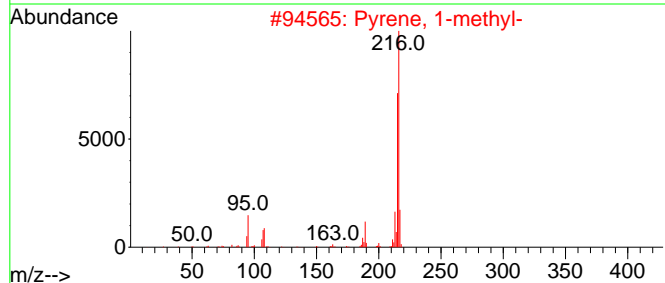
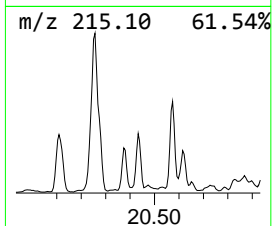
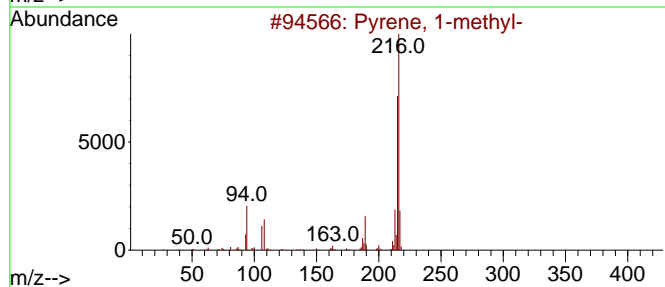
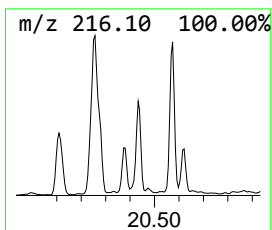
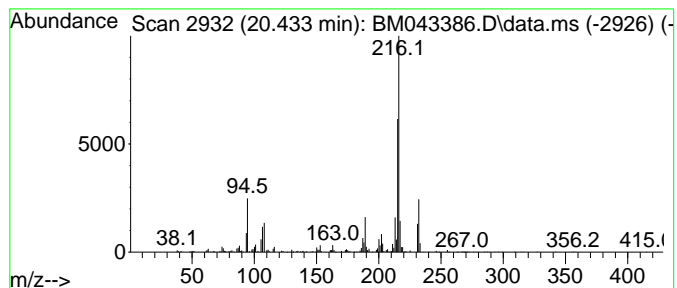
Quant Method : Z:\svoasrv\HPCHEM1\BNA_M\Methods\SFAM-EPA-BM121523.MA.M
 Quant Title : SVOA CALIBRATION

TIC Library : C:\Database\NIST20.L
 TIC Integration Parameters: LSCINT.P

 Peak Number 15 Fluoranthene, 2-methyl- Concentration Rank 22

R.T.	EstConc	Area	Relative to ISTD	R.T.
20.433	2.07 ng/ul	1067890	Chrysene-d12	21.544

Hit#	of	5	Tentative ID	MW	MolForm	CAS#	Qual
1			Pyrene, 1-methyl-	216	C17H12	002381-21-7	97
2			Pyrene, 1-methyl-	216	C17H12	002381-21-7	93
3			Pyrene, 1-methyl-	216	C17H12	002381-21-7	93
4			Fluoranthene, 2-methyl-	216	C17H12	033543-31-6	92
5			Pyrene, 2-methyl-	216	C17H12	003442-78-2	89



Data Path : Z:\svoasrv\HPCHEM1\BNA_M\Data\BM121823\
 Data File : BM043386.D
 Acq On : 18 Dec 2023 10:50
 Operator : MA/JU
 Sample : 05626-16
 Misc :
 ALS Vial : 4 Sample Multiplier: 1

Instrument :
 BNA_M
 ClientSampleId :
 DCLG2

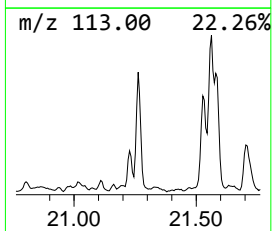
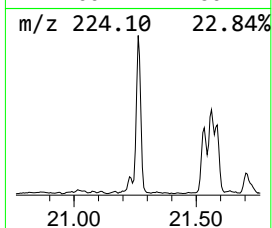
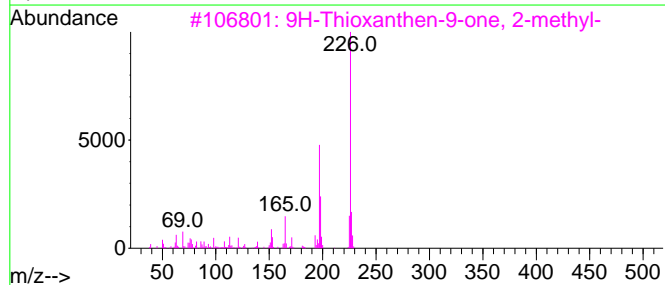
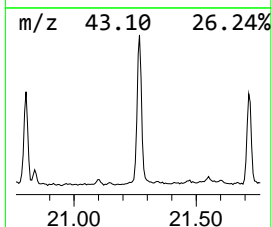
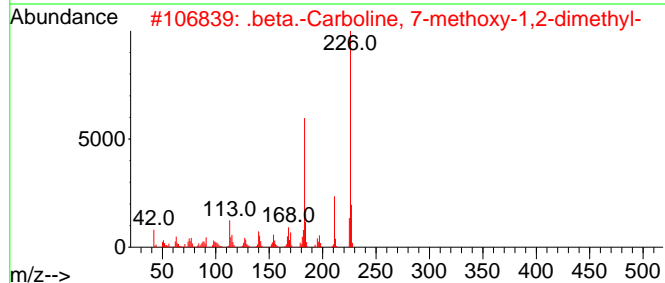
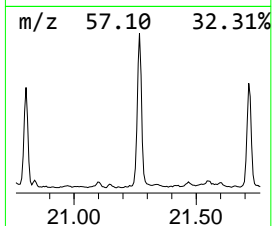
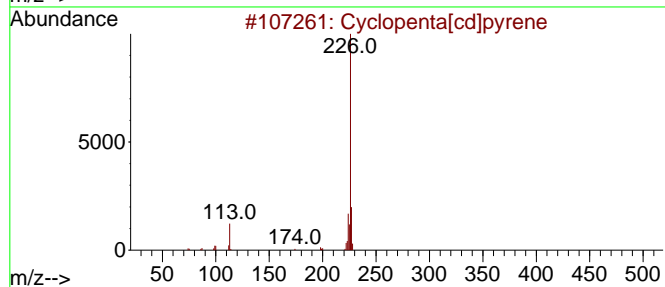
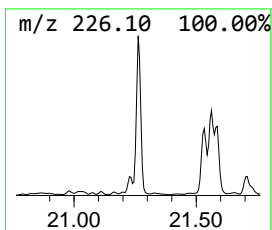
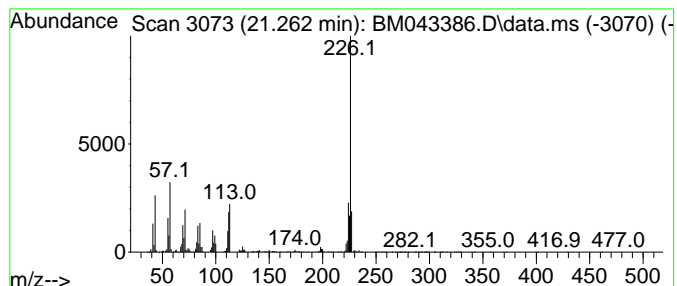
Quant Method : Z:\svoasrv\HPCHEM1\BNA_M\Methods\SFAM-EPA-BM121523.MA.M
 Quant Title : SVOA CALIBRATION

TIC Library : C:\Database\NIST20.L
 TIC Integration Parameters: LSCINT.P

 Peak Number 16 Cyclopenta[cd]pyrene Concentration Rank 6

R.T.	EstConc	Area	Relative to ISTD	R.T.
21.262	5.98 ng/ul	3084130	Chrysene-d12	21.544

Hit#	of	5	Tentative ID	MW	MolForm	CAS#	Qual
1			Cyclopenta[cd]pyrene	226	C18H10	027208-37-3	93
2			.beta.-Carboline, 7-methoxy-1,2-...	226	C14H14N2O	006519-18-2	49
3			9H-Thioxanthen-9-one, 2-methyl-	226	C14H10OS	015774-82-0	43
4			4-Naphthalen-2-yl-thiazol-2-ylamine	226	C13H10N2S	1000300-53-4	40
5			benzenamine, 4-(2-benzothiazolyl)-	226	C13H10N2S	1000400-93-4	38



Data Path : Z:\svoasrv\HPCHEM1\BNA_M\Data\BM121823\
 Data File : BM043386.D
 Acq On : 18 Dec 2023 10:50
 Operator : MA/JU
 Sample : 05626-16
 Misc :
 ALS Vial : 4 Sample Multiplier: 1

Instrument :
 BNA_M
 ClientSampleId :
 DCLG2

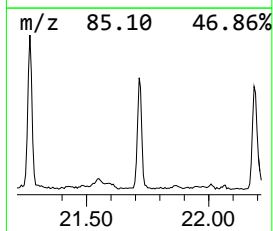
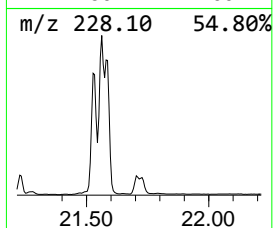
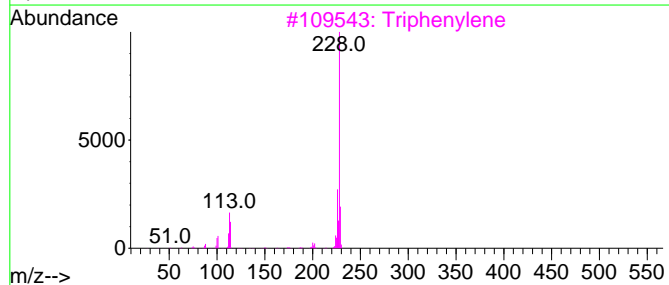
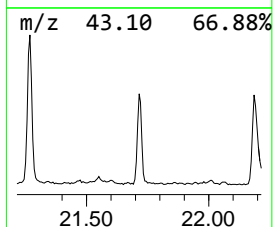
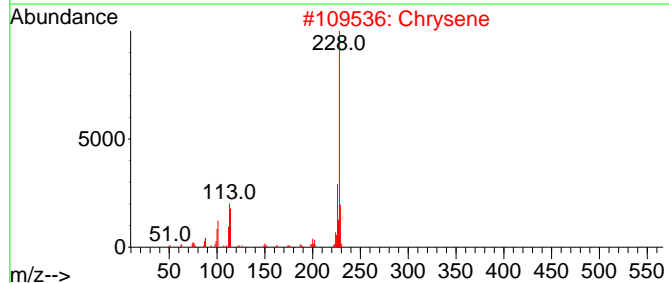
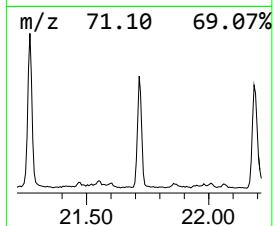
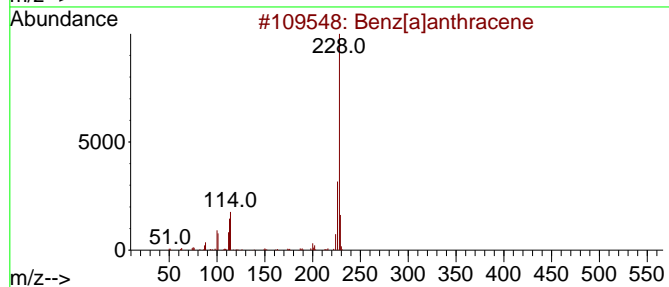
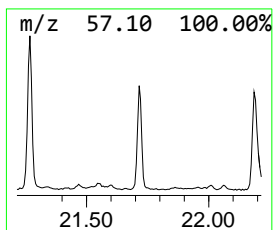
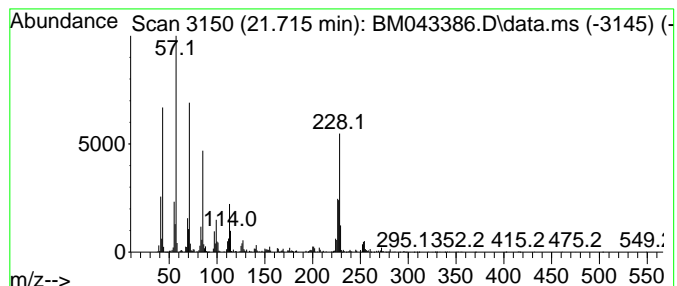
Quant Method : Z:\svoasrv\HPCHEM1\BNA_M\Methods\SFAM-EPA-BM121523.MA.M
 Quant Title : SVOA CALIBRATION

TIC Library : C:\Database\NIST20.L
 TIC Integration Parameters: LSCINT.P

 Peak Number 17 unknown-01 Concentration Rank 17

R.T.	EstConc	Area	Relative to ISTD	R.T.
21.715	3.18 ng/ul	1637810	Chrysene-d12	21.544

Hit#	of 5	Tentative ID	MW	MolForm	CAS#	Qual
1		Benz[a]anthracene	228	C18H12	000056-55-3	64
2		Chrysene	228	C18H12	000218-01-9	51
3		Triphenylene	228	C18H12	000217-59-4	46
4		Benzo[c]phenanthrene	228	C18H12	000195-19-7	42
5		Benzo[c]phenanthrene	228	C18H12	000195-19-7	41



Data Path : Z:\svoasrv\HPCHEM1\BNA_M\Data\BM121823\
 Data File : BM043386.D
 Acq On : 18 Dec 2023 10:50
 Operator : MA/JU
 Sample : 05626-16
 Misc :
 ALS Vial : 4 Sample Multiplier: 1

Instrument :
 BNA_M
 ClientSampleId :
 DCLG2

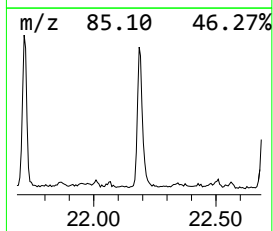
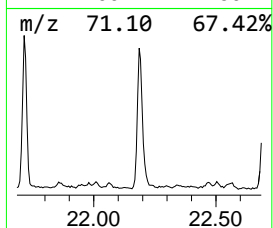
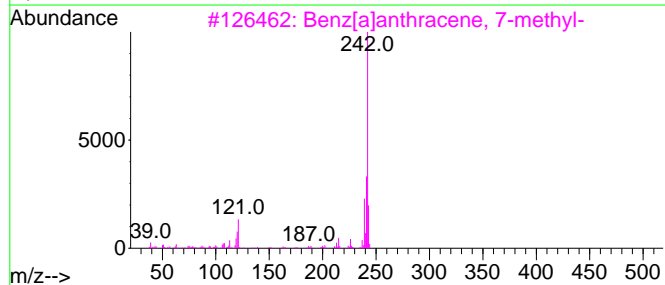
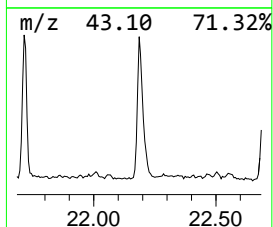
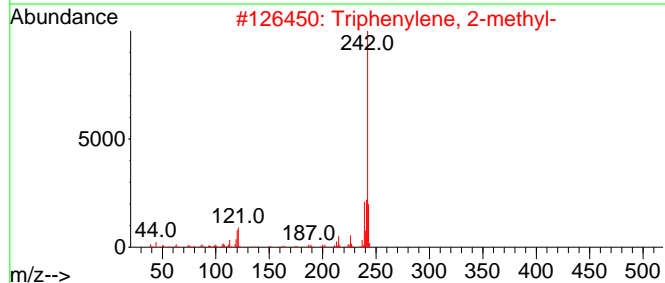
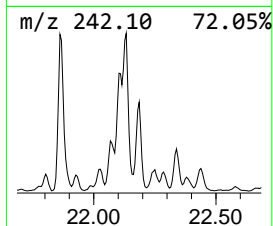
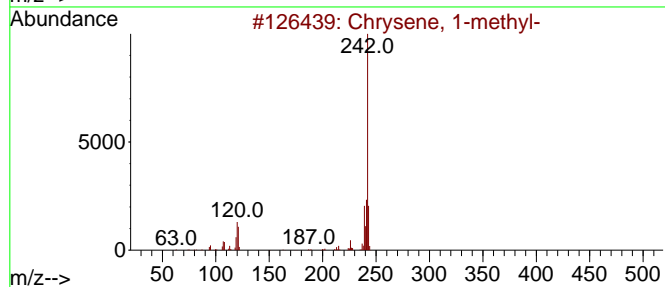
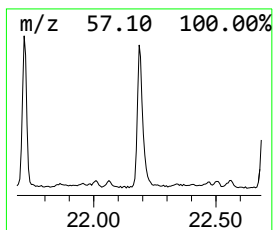
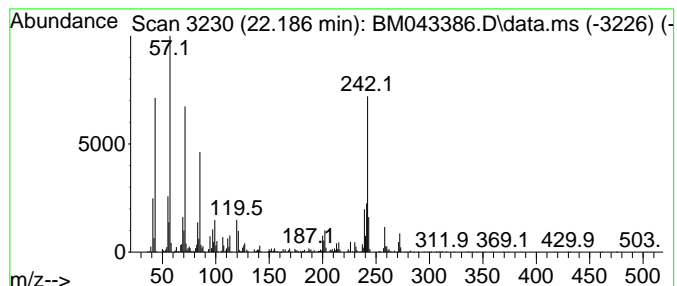
Quant Method : Z:\svoasrv\HPCHEM1\BNA_M\Methods\SFAM-EPA-BM121523.MA.M
 Quant Title : SVOA CALIBRATION

TIC Library : C:\Database\NIST20.L
 TIC Integration Parameters: LSCINT.P

 Peak Number 18 Chrysene, 1-methyl- Concentration Rank 16

R.T.	EstConc	Area	Relative to ISTD	R.T.
22.186	3.18 ng/ul	1638690	Chrysene-d12	21.544

Hit#	of	5	Tentative ID	MW	MolForm	CAS#	Qual
1			Chrysene, 1-methyl-	242	C19H14	003351-28-8	92
2			Triphenylene, 2-methyl-	242	C19H14	001705-84-6	86
3			Benz[a]anthracene, 7-methyl-	242	C19H14	002541-69-7	83
4			Heptadecane, 9-octyl-	352	C25H52	007225-64-1	62
5			Hexadecane	226	C16H34	000544-76-3	56



Data Path : Z:\svoasrv\HPCHEM1\BNA_M\Data\BM121823\
 Data File : BM043386.D
 Acq On : 18 Dec 2023 10:50
 Operator : MA/JU
 Sample : 05626-16
 Misc :
 ALS Vial : 4 Sample Multiplier: 1

Instrument :
 BNA_M
 ClientSampleId :
 DCLG2

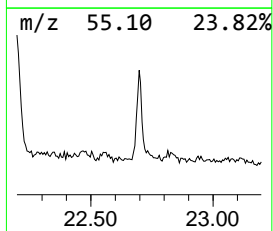
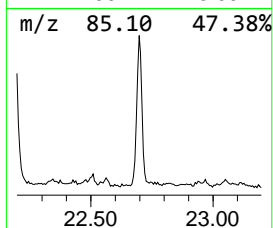
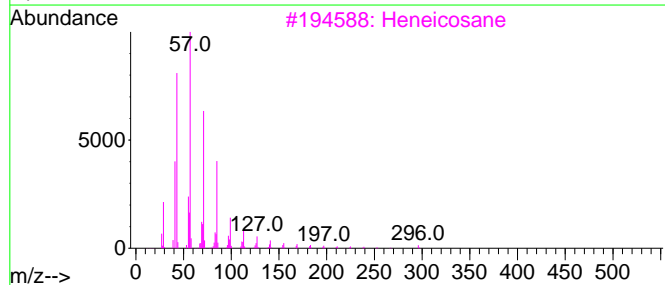
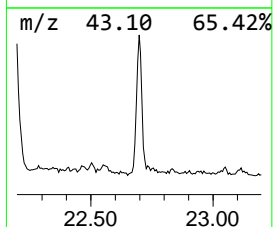
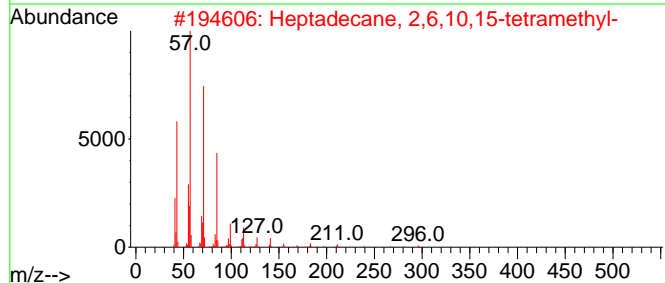
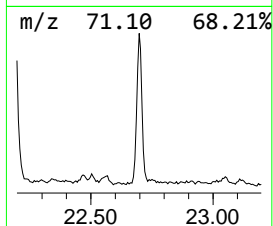
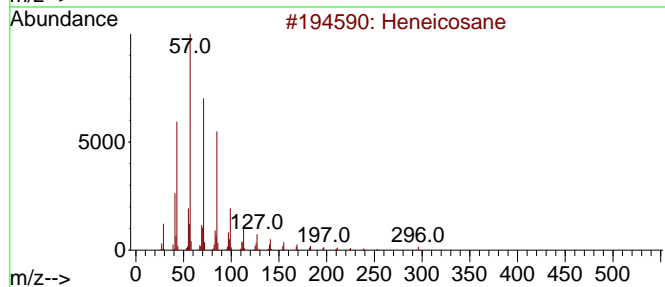
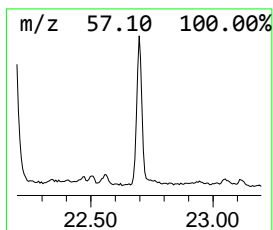
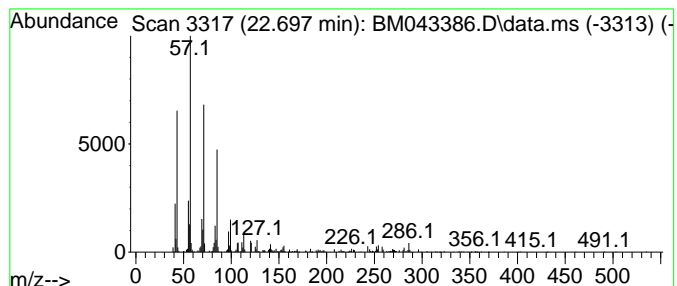
Quant Method : Z:\svoasrv\HPCHEM1\BNA_M\Methods\SFAM-EPA-BM121523.MA.M
 Quant Title : SVOA CALIBRATION

TIC Library : C:\Database\NIST20.L
 TIC Integration Parameters: LSCINT.P

 Peak Number 19 (DEL) Alkane: Straight-Chai... Concentration Rank 21

R.T.	EstConc	Area	Relative to ISTD	R.T.
22.697	2.09 ng/ul	1079690	Chrysene-d12	21.544

Hit#	of 5	Tentative ID	MW	MolForm	CAS#	Qual
1		Heneicosane	296	C21H44	000629-94-7	96
2		Heptadecane, 2,6,10,15-tetramethyl-	296	C21H44	054833-48-6	91
3		Heneicosane	296	C21H44	000629-94-7	86
4		Octacosane, 2-methyl-	408	C29H60	001560-98-1	83
5		Octacosane	394	C28H58	000630-02-4	83



Data Path : Z:\svoasrv\HPCHEM1\BNA_M\Data\BM121823\
 Data File : BM043386.D
 Acq On : 18 Dec 2023 10:50
 Operator : MA/JU
 Sample : 05626-16
 Misc :
 ALS Vial : 4 Sample Multiplier: 1

Instrument :
 BNA_M
 ClientSampleId :
 DCLG2

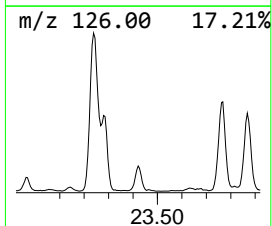
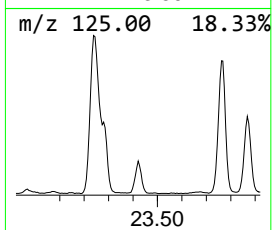
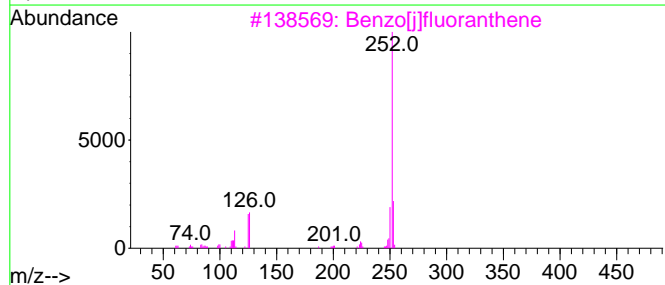
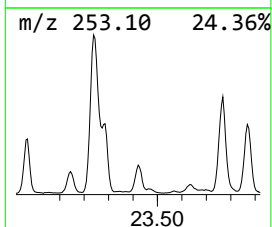
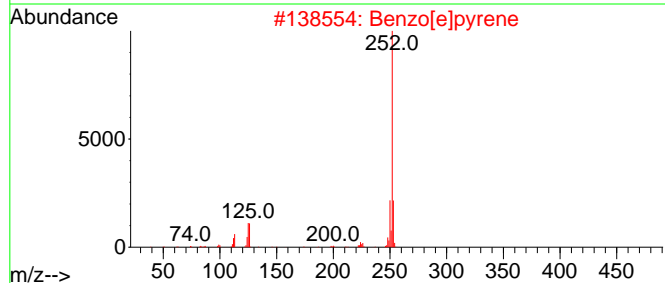
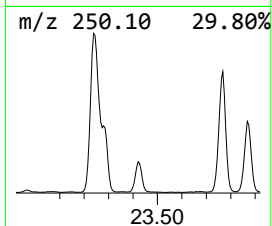
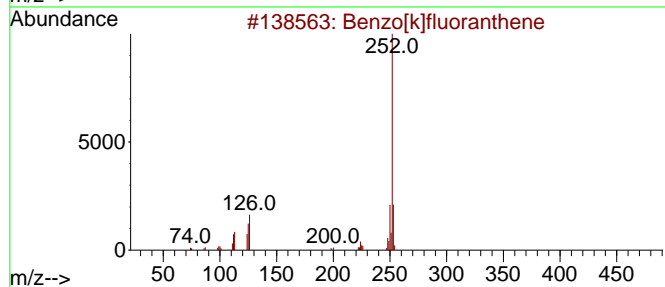
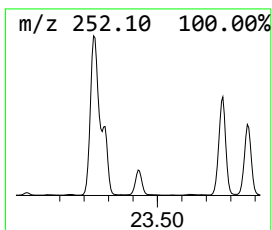
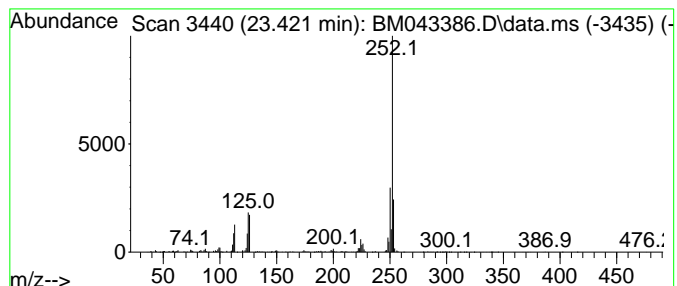
Quant Method : Z:\svoasrv\HPCHEM1\BNA_M\Methods\SFAM-EPA-BM121523.MA.M
 Quant Title : SVOA CALIBRATION

TIC Library : C:\Database\NIST20.L
 TIC Integration Parameters: LSCINT.P

 Peak Number 20 Benzo[e]pyrene Concentration Rank 4

R.T.	EstConc	Area	Relative to ISTD	R.T.
23.421	8.58 ng/ul	1534920	Perylene-d12	23.974

Hit#	of 5	Tentative ID	MW	MolForm	CAS#	Qual
1		Benzo[k]fluoranthene	252	C20H12	000207-08-9	97
2		Benzo[e]pyrene	252	C20H12	000192-97-2	96
3		Benzo[j]fluoranthene	252	C20H12	000205-82-3	95
4		Benzo[b]fluoranthene	252	C20H12	000205-99-2	93
5		Benzo[b]fluoranthene	252	C20H12	000205-99-2	93



Data Path : Z:\svoasrv\HPCHEM1\BNA_M\Data\BM121823\
 Data File : BM043386.D
 Acq On : 18 Dec 2023 10:50
 Operator : MA/JU
 Sample : 05626-16
 Misc :
 ALS Vial : 4 Sample Multiplier: 1

Instrument :
 BNA_M
 ClientSampleId :
 DCLG2

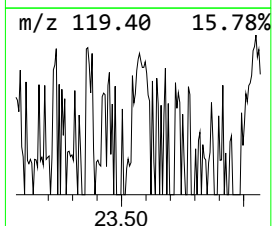
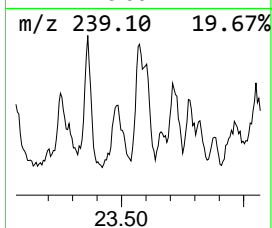
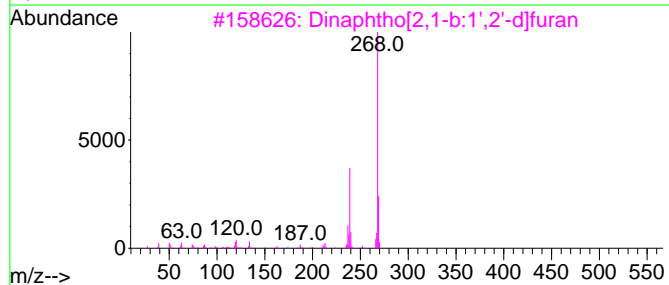
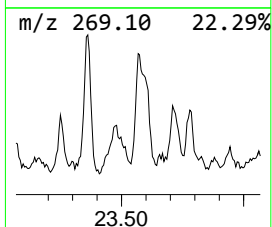
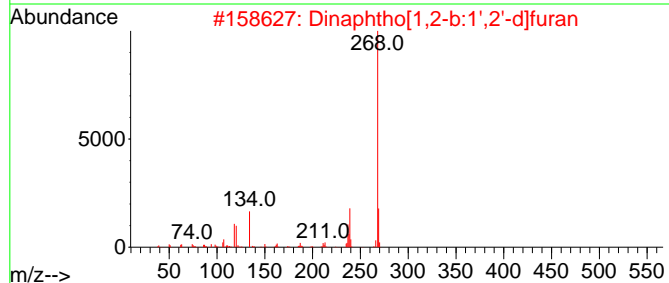
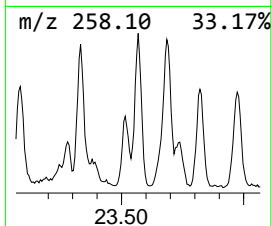
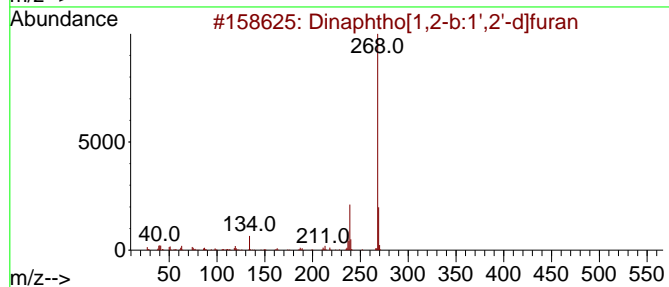
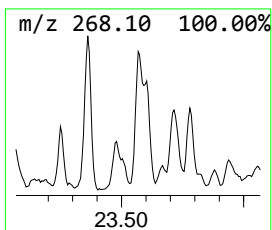
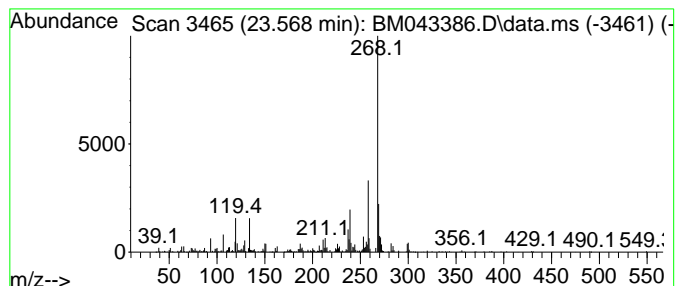
Quant Method : Z:\svoasrv\HPCHEM1\BNA_M\Methods\SFAM-EPA-BM121523.MA.M
 Quant Title : SVOA CALIBRATION

TIC Library : C:\Database\NIST20.L
 TIC Integration Parameters: LSCINT.P

 Peak Number 21 Dinaphtho[1,2-b:1',2'-d]furan Concentration Rank 12

R.T.	EstConc	Area	Relative to ISTD	R.T.
23.568	4.13 ng/ul	739253	Perylene-d12	23.974

Hit#	of	5	Tentative ID	MW	MolForm	CAS#	Qual
1			Dinaphtho[1,2-b:1',2'-d]furan	268	C20H12O	000207-93-2	70
2			Dinaphtho[1,2-b:1',2'-d]furan	268	C20H12O	000207-93-2	70
3			Dinaphtho[2,1-b:1',2'-d]furan	268	C20H12O	000194-63-8	62
4			9,10-Anthracenedione, 1,5-dimeth...	268	C16H12O4	006448-90-4	53
5			Benzo(a)pyrene 4,5-oxide	268	C20H12O	037574-47-3	53



Data Path : Z:\svoasrv\HPCHEM1\BNA_M\Data\BM121823\
 Data File : BM043386.D
 Acq On : 18 Dec 2023 10:50
 Operator : MA/JU
 Sample : 05626-16
 Misc :
 ALS Vial : 4 Sample Multiplier: 1

Instrument :
 BNA_M
 ClientSampleId :
 DCLG2

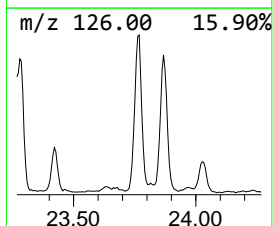
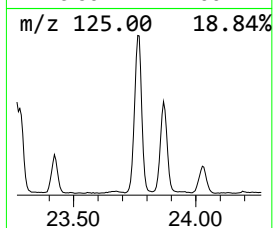
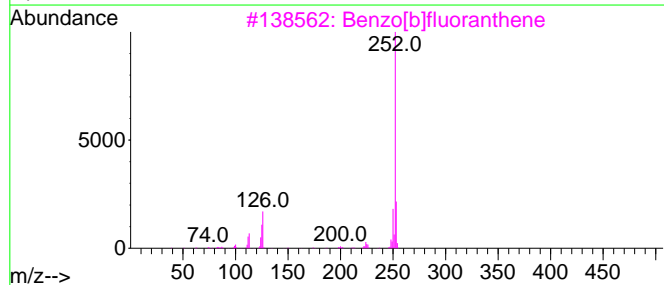
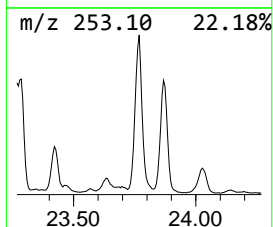
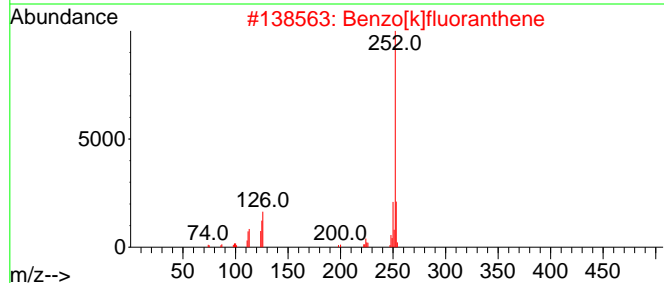
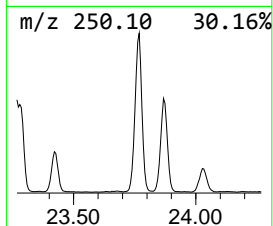
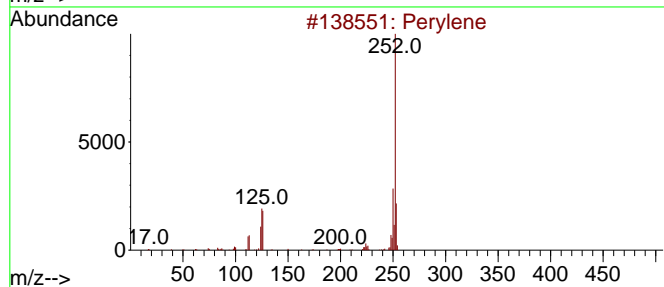
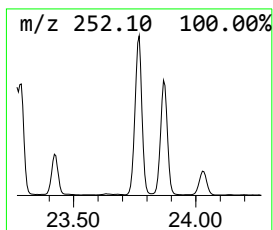
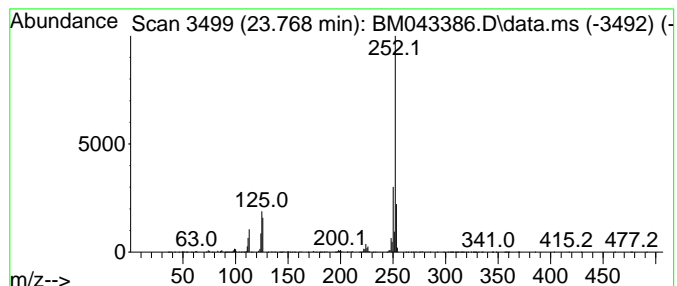
Quant Method : Z:\svoasrv\HPCHEM1\BNA_M\Methods\SFAM-EPA-BM121523.MA.M
 Quant Title : SVOA CALIBRATION

TIC Library : C:\Database\NIST20.L
 TIC Integration Parameters: LSCINT.P

 Peak Number 22 Perylene Concentration Rank 1

R.T.	EstConc	Area	Relative to ISTD	R.T.
23.768	33.53 ng/ul	6000460	Perylene-d12	23.974

Hit#	of	5	Tentative ID	MW	MolForm	CAS#	Qual
1			Perylene	252	C20H12	000198-55-0	99
2			Benzo[k]fluoranthene	252	C20H12	000207-08-9	99
3			Benzo[b]fluoranthene	252	C20H12	000205-99-2	99
4			Benzo[e]pyrene	252	C20H12	000192-97-2	98
5			Benzo[b]fluoranthene	252	C20H12	000205-99-2	96



Data Path : Z:\svoasrv\HPCHEM1\BNA_M\Data\BM121823\
 Data File : BM043386.D
 Acq On : 18 Dec 2023 10:50
 Operator : MA/JU
 Sample : 05626-16
 Misc :
 ALS Vial : 4 Sample Multiplier: 1

Instrument :
 BNA_M
 ClientSampleId :
 DCLG2

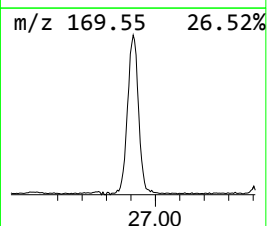
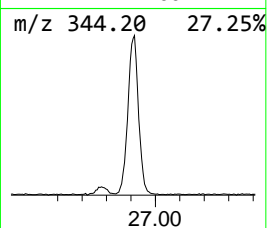
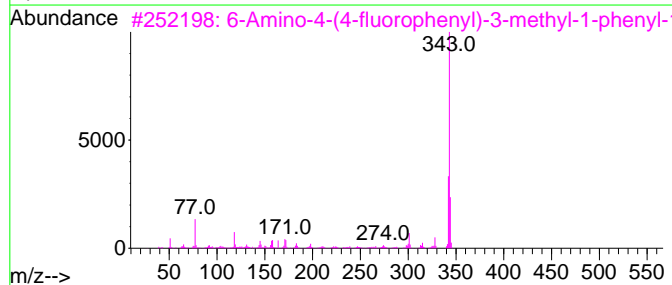
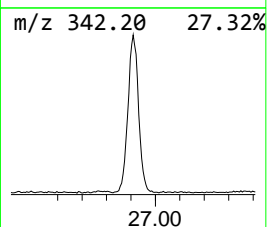
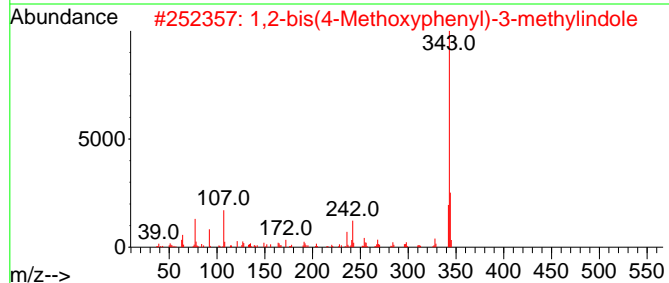
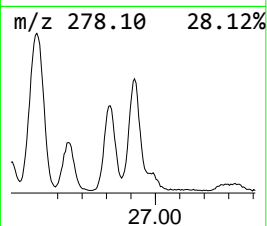
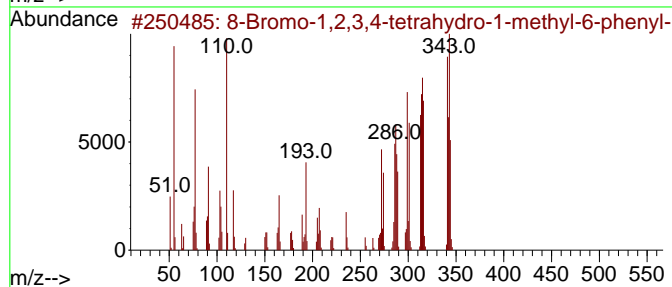
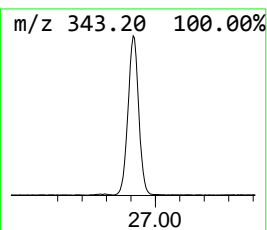
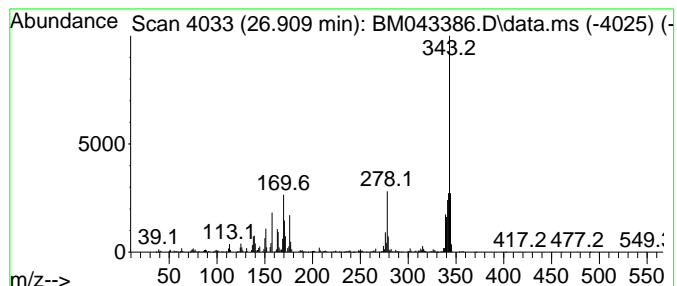
Quant Method : Z:\svoasrv\HPCHEM1\BNA_M\Methods\SFAM-EPA-BM121523.MA.M
 Quant Title : SVOA CALIBRATION

TIC Library : C:\Database\NIST20.L
 TIC Integration Parameters: LSCINT.P

 Peak Number 23 unknown-02 Concentration Rank 3

R.T.	EstConc	Area	Relative to ISTD	R.T.
26.909	18.05 ng/ul	3229750	Perylene-d12	23.974

Hit#	of	5	Tentative ID	MW	MolForm	CAS#	Qual
1			8-Bromo-1,2,3,4-tetrahydro-1-met...	342	C17H15BrN2O	063563-58-6	46
2			1,2-bis(4-Methoxyphenyl)-3-methy...	343	C23H21NO2	1000435-11-7	43
3			6-Amino-4-(4-fluorophenyl)-3-met...	343	C20H14FN5	887396-42-1	43
4			2-Amino-1-(oxolan-2-ylmethyl)-4,...	343	C22H21N3O	1000435-03-2	35
5			5-(p-Aminophenyl)-4-(4-biphenyly...	343	C21H17N3S	094863-57-7	32



Data Path : Z:\svoasrv\HPCHEM1\BNA_M\Data\BM121823\
 Data File : BM043386.D
 Acq On : 18 Dec 2023 10:50
 Operator : MA/JU
 Sample : 05626-16
 Misc :
 ALS Vial : 4 Sample Multiplier: 1

Instrument :
 BNA_M
 ClientSampleId :
 DCLG2

Quant Method : Z:\svoasrv\HPCHEM1\BNA_M\Methods\SFAM-EPA-BM121523.MA.M
 Quant Title : SVOA CALIBRATION

TIC Library : C:\Database\NIST20.L
 TIC Integration Parameters: LSCINT.P

TIC Top Hit name	RT	EstConc	Units	Response	--Internal Standard--			
					#	RT	Resp	Conc
Benzene, 1,2,4-...	7.204	2.7	ng/ul	388819	1	7.992	2868630	20.0
Mesitylene	7.634	7.1	ng/ul	1016310	1	7.992	2868630	20.0
Benzene, 1,2,3-...	8.098	3.0	ng/ul	431501	1	7.992	2868630	20.0
Indane	8.363	28.5	ng/ul	4092190	1	7.992	2868630	20.0
Indene	8.534	2.0	ng/ul	294204	1	7.992	2868630	20.0
Aceto phenone	8.828	3.8	ng/ul	544288	1	7.992	2868630	20.0
Benzene, 2-ethe...	10.045	2.8	ng/ul	580371	2	10.804	4191240	20.0
Benzene, 1-ethe...	10.192	4.3	ng/ul	907313	2	10.804	4191240	20.0
(DEL) Alkane: S...	16.351	5.3	ng/ul	1249440	4	17.368	4719970	20.0
Acridine	17.562	3.4	ng/ul	806413	4	17.368	4719970	20.0
5H-Indeno[1,2-b...	17.774	4.8	ng/ul	1127790	4	17.368	4719970	20.0
n-Hexadecanoic ...	18.268	5.2	ng/ul	1232150	4	17.368	4719970	20.0
4H-Cyclopenta[d...	18.439	4.1	ng/ul	960838	4	17.368	4719970	20.0
Pyrene, 1-methyl-	20.256	4.4	ng/ul	2254600	5	21.544	10308800	20.0
Fluoranthene, 2...	20.433	2.1	ng/ul	1067890	5	21.544	10308800	20.0
Cyclopenta[cd]p...	21.262	6.0	ng/ul	3084130	5	21.544	10308800	20.0
unknown-01	21.715	3.2	ng/ul	1637810	5	21.544	10308800	20.0
Chrysene, 1-met...	22.186	3.2	ng/ul	1638690	5	21.544	10308800	20.0
(DEL) Alkane: S...	22.697	2.1	ng/ul	1079690	5	21.544	10308800	20.0
Benzo[e]pyrene	23.421	8.6	ng/ul	1534920	6	23.974	3579510	20.0
Dinaphtho[1,2-b...	23.568	4.1	ng/ul	739253	6	23.974	3579510	20.0
Perylene	23.768	33.5	ng/ul	6000460	6	23.974	3579510	20.0
unknown-02	26.909	18.1	ng/ul	3229750	6	23.974	3579510	20.0