

Data Path : Z:\SVOASRV\HPCHEM1\BNA M\DATA\BM121919\
 Data File : BM024190.D
 Acq On : 20 Dec 2019 00:44
 Operator : JU
 Sample : K6202-07
 Misc :
 ALS Vial : 16 Sample Multiplier: 1

Instrument :
 BNA_M
 ClientSampleId :
 C0C00

Integration Parameters: LSCINT.P

Integrator: RTE
 Smoothing : OFF
 Sampling : 1
 Start Thrs: 0.2
 Stop Thrs : 0

Filtering: 5
 Min Area: 0.1 % of largest Peak
 Max Peaks: 100
 Peak Location: TOP

If leading or trailing edge < 100 prefer < Baseline drop else tangent >
 Peak separation: 5

Method : Z:\SVOASRV\HPCHEM1\BNA_M\METHODS\SOM-EPA-BM121719MA.M
 Title : SVOA CALIBRATION

Signal : TIC

peak #	R.T. min	first scan	max scan	last scan	PK TY	peak height	corr. area	corr. % max.	% of total
1	2.999	16	19	26	rVB	58141	79988	1.13%	0.117%
2	3.699	134	138	140	rVB3	13075	17096	0.24%	0.025%
3	4.134	209	212	217	rBV8	6112	10660	0.15%	0.016%
4	6.604	627	632	633	rBV	21206	23795	0.34%	0.035%
5	6.640	633	638	653	rVB	197913	385541	5.43%	0.565%
6	6.787	658	663	680	rBV	750306	1289724	18.17%	1.889%
7	6.975	689	695	710	rBV	851288	1388216	19.55%	2.033%
8	7.434	767	773	785	rBV	1028003	1644327	23.16%	2.409%
9	7.528	787	789	795	rVB4	7519	10185	0.14%	0.015%
10	7.886	846	850	854	rVB3	6098	7734	0.11%	0.011%
11	8.163	891	897	915	rBV	597544	1093806	15.41%	1.602%
12	8.592	963	970	988	rBV	912910	1618817	22.80%	2.371%
13	9.028	1039	1044	1051	rVB2	75775	111116	1.57%	0.163%
14	9.304	1084	1091	1104	rBV	773194	1342452	18.91%	1.966%
15	9.845	1176	1183	1202	rBV	1013681	2036125	28.68%	2.982%
16	10.204	1235	1244	1254	rBV	1515580	2516404	35.45%	3.686%
17	10.386	1270	1275	1289	rVB2	31873	86761	1.22%	0.127%
18	11.516	1460	1467	1474	rVB	32527	50222	0.71%	0.074%
19	11.827	1513	1520	1524	rBV4	12492	24911	0.35%	0.036%
20	12.751	1674	1677	1683	rVB4	5052	7291	0.10%	0.011%
21	13.527	1802	1809	1814	rBV	2554816	3752651	52.86%	5.497%
22	13.574	1814	1817	1826	rVV	131418	204258	2.88%	0.299%
23	13.645	1826	1829	1832	rVB5	11380	12389	0.17%	0.018%
24	13.786	1846	1853	1865	rBV	2856483	4138177	58.29%	6.062%
25	14.027	1890	1894	1899	rBV6	5092	7855	0.11%	0.012%
26	14.098	1899	1906	1917	rBV2	2289561	3434208	48.38%	5.030%
27	14.368	1947	1952	1968	rBV3	70945	230089	3.24%	0.337%
28	14.845	2028	2033	2037	rVB6	5850	8223	0.12%	0.012%
29	14.892	2037	2041	2044	rVB5	4997	7208	0.10%	0.011%
30	14.933	2044	2048	2053	rBV5	6693	14793	0.21%	0.022%
31	14.986	2054	2057	2062	rVB5	6193	8166	0.12%	0.012%
32	15.104	2070	2077	2088	rBV	3953957	5595690	78.82%	8.196%
33	15.251	2096	2102	2114	rBV	1117602	1679846	23.66%	2.461%
34	15.345	2114	2118	2132	rVV2	49963	119062	1.68%	0.174%

Data Path : Z:\SVOASRV\HPCHEM1\BNA M\DATA\BM121919\
 Data File : BM024190.D
 Acq On : 20 Dec 2019 00:44
 Operator : JU
 Sample : K6202-07
 Misc :
 ALS Vial : 16 Sample Multiplier: 1

Instrument :
 BNA_M
 ClientSampleId :
 C0C00

Integration Parameters: LSCINT.P

Integrator: RTE
 Smoothing : OFF
 Sampling : 1
 Start Thrs: 0.2
 Stop Thrs : 0

Filtering: 5
 Min Area: 0.1 % of largest Peak
 Max Peaks: 100
 Peak Location: TOP

If leading or trailing edge < 100 prefer < Baseline drop else tangent >
 Peak separation: 5

Method : Z:\SVOASRV\HPCHEM1\BNA_M\METHODS\SOM-EPA-BM121719MA.M
 Title : SVOA CALIBRATION

35	15.451	2132	2136	2139	rVV2	12230	16475	0.23%	0.024%
36	15.492	2139	2143	2147	rVV7	8329	12805	0.18%	0.019%
37	15.551	2149	2153	2157	rVB6	7354	10886	0.15%	0.016%
38	15.692	2171	2177	2182	rBV7	4763	12234	0.17%	0.018%
39	15.751	2182	2187	2191	rVB5	9808	13799	0.19%	0.020%
40	15.892	2208	2211	2219	rVB7	16592	31345	0.44%	0.046%
41	16.033	2230	2235	2240	rVB7	7069	13595	0.19%	0.020%
42	16.104	2240	2247	2250	rBV8	8960	17435	0.25%	0.026%
43	16.645	2333	2339	2345	rBV3	26212	42091	0.59%	0.062%
44	16.857	2368	2375	2385	rBV	2848326	3938626	55.48%	5.769%
45	16.956	2385	2392	2408	rVV	4455541	6222825	87.66%	9.115%
46	17.168	2424	2428	2435	rVV	71138	107385	1.51%	0.157%
47	17.286	2443	2448	2453	rVB8	11000	20151	0.28%	0.030%
48	17.433	2470	2473	2478	rVB7	8314	12373	0.17%	0.018%
49	17.780	2528	2532	2543	rBV3	158188	334885	4.72%	0.491%
50	18.168	2596	2598	2605	rVB7	12456	15846	0.22%	0.023%
51	18.645	2677	2679	2683	rBV5	9475	16576	0.23%	0.024%
52	18.898	2718	2722	2726	rBV	52262	80476	1.13%	0.118%
53	19.080	2749	2753	2760	rBV3	62623	104128	1.47%	0.153%
54	19.150	2762	2765	2769	rVB2	46204	58601	0.83%	0.086%
55	19.262	2778	2784	2797	rBV	5155071	7099042	100.00%	10.399%
56	19.398	2803	2807	2812	rVB3	53392	66342	0.93%	0.097%
57	20.809	3043	3047	3054	rBV	766289	1060802	14.94%	1.554%
58	21.068	3086	3091	3105	rBV	3305204	4259589	60.00%	6.239%
59	22.586	3346	3349	3353	rVB	276520	349952	4.93%	0.513%
60	23.062	3424	3430	3436	rBV	3973803	7004288	98.67%	10.260%
61	23.197	3447	3453	3467	rVB	2453909	4389207	61.83%	6.429%

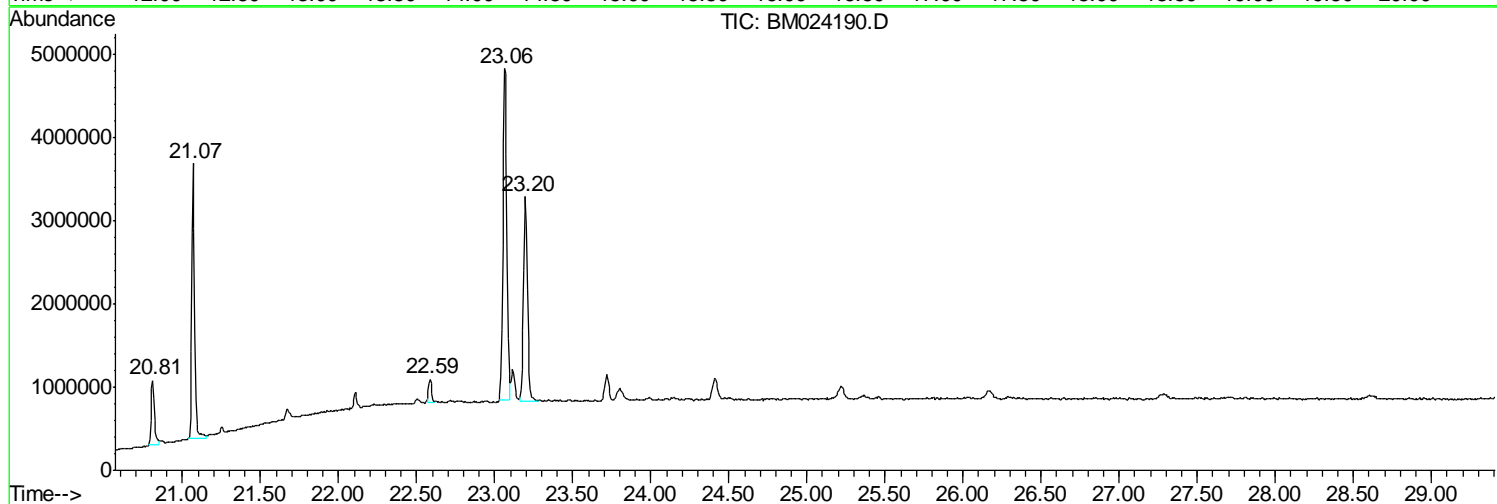
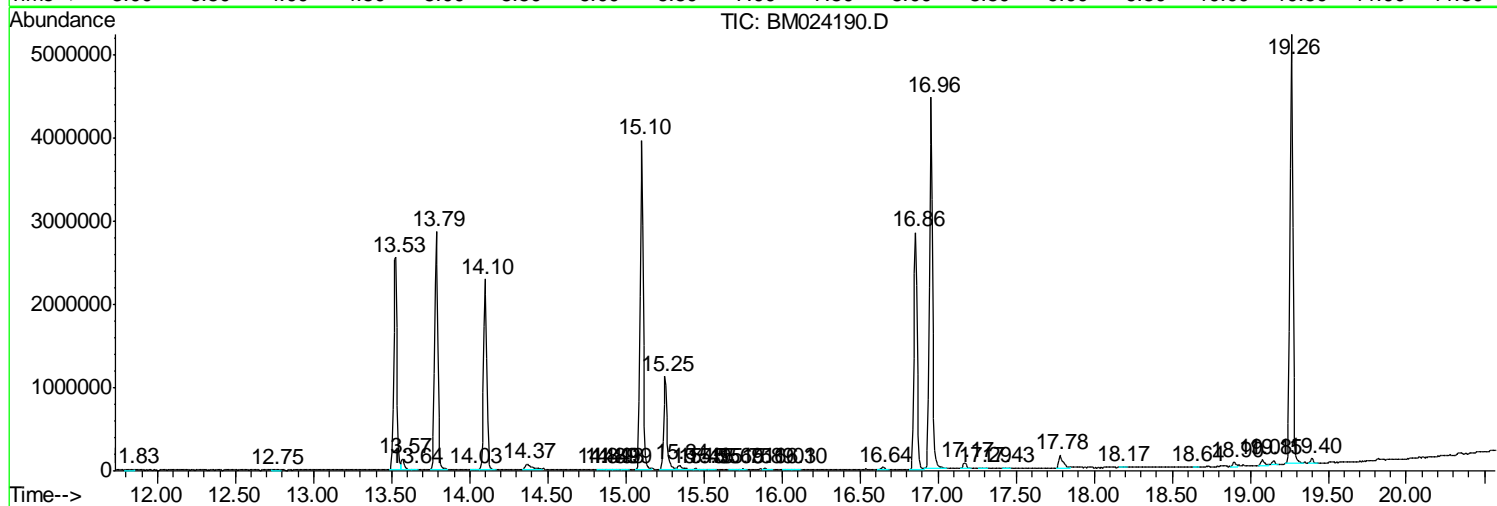
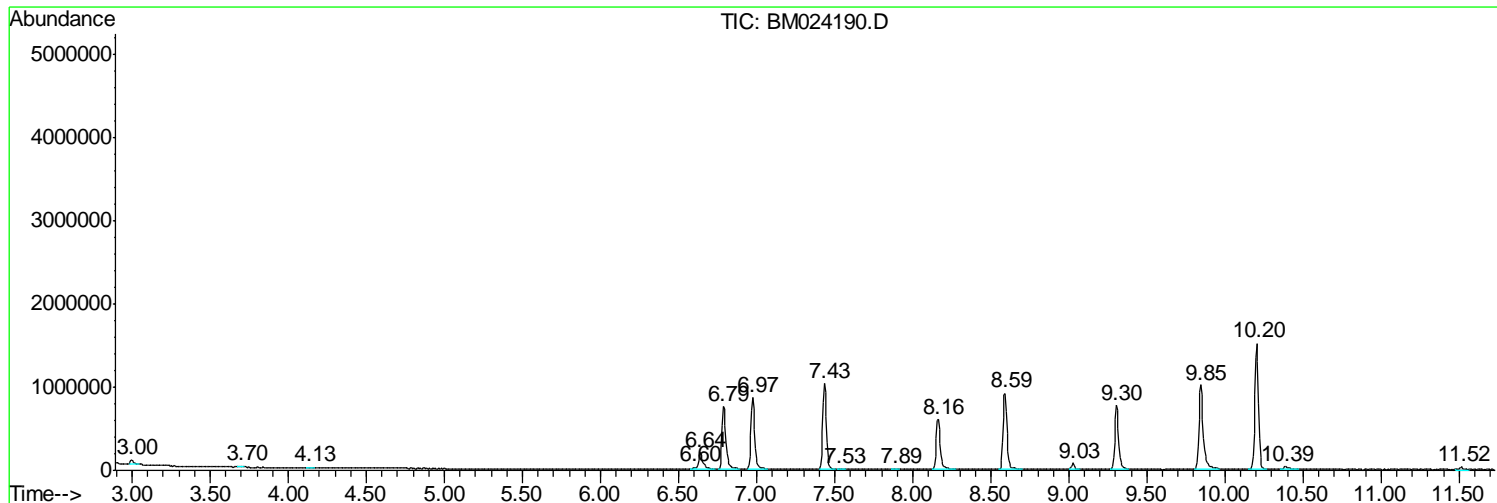
Sum of corrected areas: 68269545

Data Path : Z:\SVOASRV\HPCHEM1\BNA M\DATA\BM121919\
 Data File : BM024190.D
 Acq On : 20 Dec 2019 00:44
 Operator : JU
 Sample : K6202-07
 Misc :
 ALS Vial : 16 Sample Multiplier: 1

Instrument :
 BNA_M
 ClientSampleId :
 C0C00

Quant Method : Z:\SVOASRV\HPCHEM1\BNA_M\METHODS\SOM-EPA-BM121719MA.M
 Quant Title : SVOA CALIBRATION

TIC Library : C:\DATABASE\NIST11.L
 TIC Integration Parameters: LSCINT.P



Data Path : Z:\SVOASRV\HPCHEM1\BNA M\DATA\BM121919\
 Data File : BM024190.D
 Acq On : 20 Dec 2019 00:44
 Operator : JU
 Sample : K6202-07
 Misc :
 ALS Vial : 16 Sample Multiplier: 1

Instrument :
 BNA_M
 ClientSampleID :
 C0C00

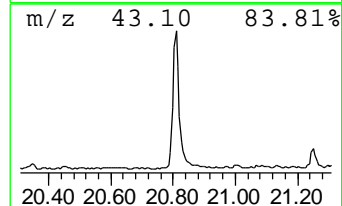
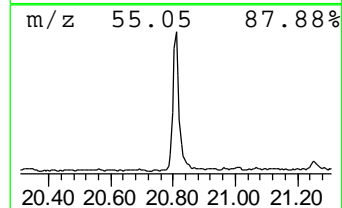
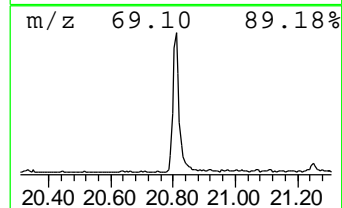
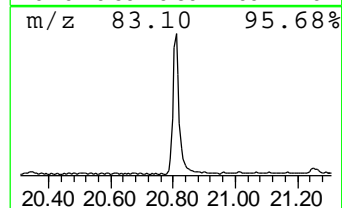
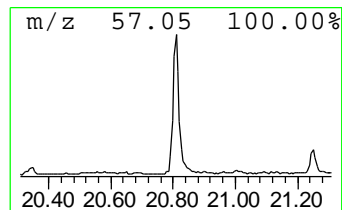
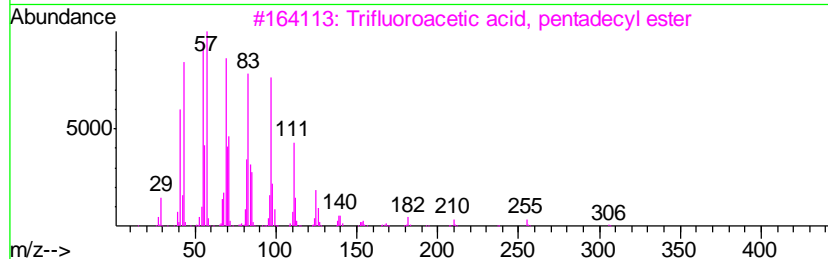
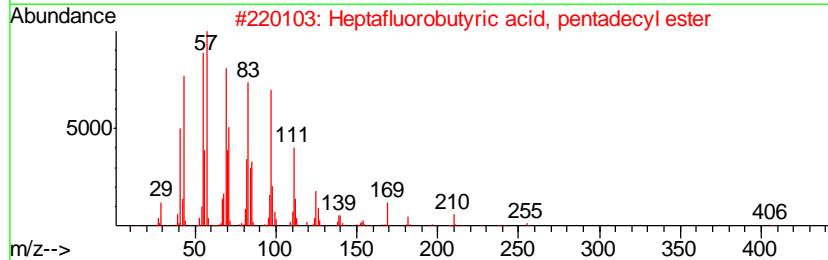
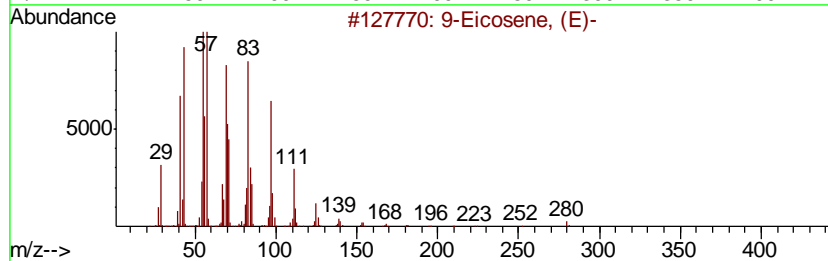
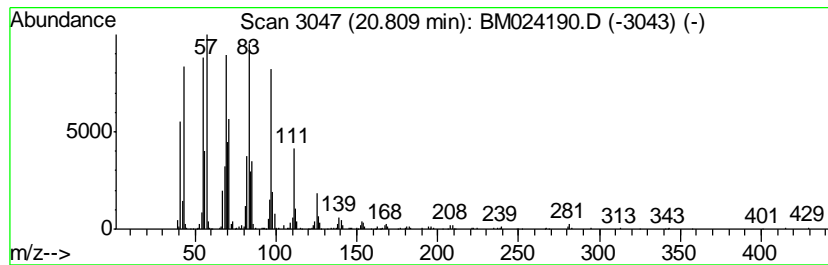
Quant Method : Z:\SVOASRV\HPCHEM1\BNA_M\METHODS\SOM-EPA-BM121719MA.M
 Quant Title : SVOA CALIBRATION

TIC Library : C:\DATABASE\NIST11.L
 TIC Integration Parameters: LSCINT.P

 Peak Number 1 (DEL) Alkane: Cyclic20.81 Concentration Rank 1

R.T.	EstConc	Area	Relative to ISTD	R.T.
20.81	4.98 ng/ul	1060800	Chrysene-d12	21.07

Hit#	of	Tentative ID	MW	MolForm	CAS#	Qual
1	5	9-Eicosene, (E)-	280	C20H40	074685-29-3	96
2		Heptafluorobutyric acid, pentade...	424	C19H31F7O2	959261-23-5	94
3		Trifluoroacetic acid, pentadecyl...	324	C17H31F3O2	959010-23-2	94
4		Pentafluoropropionic acid, penta...	374	C18H31F5O2	959092-08-1	94
5		Heptafluorobutyric acid, n-tetra...	410	C18H29F7O2	007365-36-8	94



Data Path : Z:\SVOASRV\HPCHEM1\BNA_M\DATA\BM121919\
Data File : BM024190.D
Acq On : 20 Dec 2019 00:44
Operator : JU
Sample : K6202-07
Misc :
ALS Vial : 16 Sample Multiplier: 1

Instrument :
BNA_M
ClientSampleId :
C0C00

Quant Method : Z:\SVOASRV\HPCHEM1\BNA_M\METHODS\SOM-EPA-BM121719MA.M
Quant Title : SVOA CALIBRATION

TIC Library : C:\DATABASE\NIST11.L
TIC Integration Parameters: LSCINT.P

TIC Top Hit name	RT	EstConc	Units	Response	--Internal Standard--			
					#	RT	Resp	Conc
(DEL) Alkane: Cyc...	20.81	5.0	ng/ul	1060800	5	21.07	4259590	20.0