

Data Path : Z:\svoasrv\HPCHEM1\BNA\_M\Data\BM122022\  
 Data File : BM038160.D  
 Acq On : 21 Dec 2022 07:19  
 Operator : CG/JU  
 Sample : N6008-20  
 Misc :  
 ALS Vial : 27 Sample Multiplier: 1

Instrument :  
 BNA\_M  
 ClientSampleId :  
 DBXY2

Integration Parameters: LSCINT.P

Integrator: RTE  
 Smoothing : OFF Filtering: 5  
 Sampling : 1 Min Area: 0.1 % of largest Peak  
 Start Thrs: 0.2 Max Peaks: 100  
 Stop Thrs : 0 Peak Location: TOP

If leading or trailing edge < 100 prefer < Baseline drop else tangent >  
 Peak separation: 5

Method : Z:\svoasrv\HPCHEM1\BNA\_M\Methods\SFAM-EPA-BM120722.M  
 Title : SVOA CALIBRATION

Signal : TIC: BM038160.D\data.ms

peak #	R.T. min	first scan	max scan	last scan	PK TY	peak height	corr. area	corr. % max.	% of total
1	3.393	32	35	41	rVB	41335	54343	0.94%	0.075%
2	3.699	84	87	95	rVB2	6921	14045	0.24%	0.019%
3	3.828	105	109	126	rBV	576267	971651	16.88%	1.344%
4	4.163	162	166	170	rVB	12651	16272	0.28%	0.023%
5	5.122	323	329	335	rVB	22489	35764	0.62%	0.049%
6	7.198	676	682	692	rVB	948598	1516188	26.34%	2.098%
7	7.369	700	711	719	rBV	699604	1088657	18.92%	1.506%
8	7.569	738	745	754	rVB	986002	1497250	26.01%	2.072%
9	8.040	818	825	832	rVB	796373	1213260	21.08%	1.679%
10	8.751	939	946	956	rVV	1205001	1914767	33.27%	2.649%
11	9.216	1017	1025	1036	rBV	951121	1535119	26.67%	2.124%
12	9.598	1085	1090	1095	rVB5	12115	18088	0.31%	0.025%
13	9.939	1141	1148	1159	rBV	824775	1345961	23.39%	1.862%
14	10.151	1180	1184	1193	rVB7	7949	13682	0.24%	0.019%
15	10.475	1232	1239	1247	rBV	1381761	2199036	38.21%	3.043%
16	10.857	1293	1304	1311	rBV	1159783	1868707	32.47%	2.586%
17	10.910	1311	1313	1318	rVB	21155	25531	0.44%	0.035%
18	10.998	1320	1328	1341	rBV	1133394	1939676	33.70%	2.684%
19	11.633	1429	1436	1441	rBV6	15320	24607	0.43%	0.034%
20	11.857	1467	1474	1480	rBV4	8442	17775	0.31%	0.025%
21	12.251	1536	1541	1548	rVB3	13339	23046	0.40%	0.032%
22	12.433	1567	1572	1576	rBV2	23791	34219	0.59%	0.047%
23	12.504	1581	1584	1591	rVB2	13846	22361	0.39%	0.031%
24	12.722	1614	1621	1628	rBV	12822	21830	0.38%	0.030%
25	12.945	1654	1659	1664	rBV7	10410	18633	0.32%	0.026%
26	13.480	1744	1750	1758	rBV3	21998	39562	0.69%	0.055%
27	13.557	1758	1763	1767	rBV2	19513	30051	0.52%	0.042%
28	13.986	1832	1836	1841	rBV3	21385	37065	0.64%	0.051%
29	14.080	1841	1852	1858	rVV	2321575	3110270	54.04%	4.304%
30	14.127	1858	1860	1866	rVB5	16664	22716	0.39%	0.031%
31	14.369	1893	1901	1914	rVB	2675929	3979339	69.14%	5.506%
32	14.545	1927	1931	1935	rVB2	19291	23894	0.42%	0.033%
33	14.669	1941	1952	1959	rBV	1734437	2458994	42.73%	3.402%
34	14.733	1959	1963	1971	rVB	23512	42820	0.74%	0.059%
35	14.869	1979	1986	1996	rBV	995169	1431233	24.87%	1.980%
36	15.063	2015	2019	2025	rVV3	39256	67613	1.17%	0.094%

Data Path : Z:\svoasrv\HPCHEM1\BNA\_M\Data\BM122022\  
 Data File : BM038160.D  
 Acq On : 21 Dec 2022 07:19  
 Operator : CG/JU  
 Sample : N6008-20  
 Misc :  
 ALS Vial : 27 Sample Multiplier: 1

Instrument :  
 BNA\_M  
 ClientSampleId :  
 DBXY2

Integration Parameters: LSCINT.P

Integrator: RTE  
 Smoothing : OFF Filtering: 5  
 Sampling : 1 Min Area: 0.1 % of largest Peak  
 Start Thrs: 0.2 Max Peaks: 100  
 Stop Thrs : 0 Peak Location: TOP

If leading or trailing edge < 100 prefer < Baseline drop else tangent >  
 Peak separation: 5

Method : Z:\svoasrv\HPCHEM1\BNA\_M\Methods\SFAM-EPA-BM120722.M  
 Title : SVOA CALIBRATION

37	15.274	2050	2055	2060	rBV4	14956	30702	0.53%	0.042%
38	15.333	2060	2065	2069	rVB5	11385	18674	0.32%	0.026%
39	15.451	2078	2085	2088	rBV6	16655	37318	0.65%	0.052%
40	15.492	2088	2092	2096	rVB3	20349	26853	0.47%	0.037%
41	15.539	2096	2100	2106	rBV6	6818	13291	0.23%	0.018%
42	15.657	2114	2120	2126	rBV	3425787	4684035	81.39%	6.481%
43	15.710	2126	2129	2134	rVB	17837	24702	0.43%	0.034%
44	15.774	2134	2140	2147	rBV	810135	1094662	19.02%	1.515%
45	15.892	2153	2160	2164	rBV7	26936	54098	0.94%	0.075%
46	16.016	2175	2181	2190	rVB	125031	198512	3.45%	0.275%
47	16.151	2200	2204	2209	rBV2	12511	19102	0.33%	0.026%
48	16.374	2234	2242	2248	rBV4	53437	120280	2.09%	0.166%
49	16.504	2260	2264	2269	rBV5	26818	47410	0.82%	0.066%
50	16.698	2290	2297	2298	rBV6	18847	30040	0.52%	0.042%
51	16.792	2309	2313	2320	rBV3	36476	69323	1.20%	0.096%
52	16.851	2321	2323	2328	rVB6	11738	14801	0.26%	0.020%
53	16.980	2342	2345	2352	rVB6	16558	24793	0.43%	0.034%
54	17.063	2355	2359	2364	rBV2	25803	39288	0.68%	0.054%
55	17.145	2368	2373	2377	rBV5	29934	45984	0.80%	0.064%
56	17.192	2378	2381	2384	rBV3	20976	23484	0.41%	0.032%
57	17.286	2393	2397	2404	rBV2	98346	150965	2.62%	0.209%
58	17.351	2404	2408	2412	rBV	70844	92874	1.61%	0.129%
59	17.410	2412	2418	2422	rVV	1966831	2808837	48.80%	3.887%
60	17.451	2422	2425	2429	rVV	386791	488547	8.49%	0.676%
61	17.510	2429	2435	2446	rVB	3506736	4956505	86.12%	6.858%
62	17.745	2473	2475	2478	rBV3	10643	12668	0.22%	0.018%
63	17.810	2483	2486	2494	rVV	45402	78193	1.36%	0.108%
64	17.880	2495	2498	2502	rVV3	27294	37318	0.65%	0.052%
65	17.921	2502	2505	2510	rVB4	30585	42825	0.74%	0.059%
66	18.021	2520	2522	2526	rVB5	15543	14573	0.25%	0.020%
67	18.168	2542	2547	2553	rBV4	69535	117836	2.05%	0.163%
68	18.227	2553	2557	2562	rBV2	90796	130990	2.28%	0.181%
69	18.286	2562	2567	2572	rBV2	1388349	1858194	32.29%	2.571%
70	18.409	2585	2588	2594	rVB2	45859	66022	1.15%	0.091%
71	18.474	2594	2599	2603	rBV2	101513	188347	3.27%	0.261%
72	18.509	2603	2605	2612	rVB	64188	81206	1.41%	0.112%
73	18.580	2612	2617	2622	rBV4	90207	167747	2.91%	0.232%
74	18.709	2636	2639	2643	rVB6	27323	32299	0.56%	0.045%
75	18.774	2647	2650	2654	rVB	68853	82312	1.43%	0.114%
76	18.821	2655	2658	2663	rVV3	47317	60506	1.05%	0.084%

Data Path : Z:\svoasrv\HPCHEM1\BNA\_M\Data\BM122022\  
 Data File : BM038160.D  
 Acq On : 21 Dec 2022 07:19  
 Operator : CG/JU  
 Sample : N6008-20  
 Misc :  
 ALS Vial : 27 Sample Multiplier: 1

Instrument :  
 BNA\_M  
 ClientSampleId :  
 DBXY2

Integration Parameters: LSCINT.P

Integrator: RTE  
 Smoothing : OFF Filtering: 5  
 Sampling : 1 Min Area: 0.1 % of largest Peak  
 Start Thrs: 0.2 Max Peaks: 100  
 Stop Thrs : 0 Peak Location: TOP

If leading or trailing edge < 100 prefer < Baseline drop else tangent >  
 Peak separation: 5

Method : Z:\svoasrv\HPCHEM1\BNA\_M\Methods\SFAM-EPA-BM120722.M  
 Title : SVOA CALIBRATION

77	19.074	2698	2701	2704	rBV2	26364	26979	0.47%	0.037%
78	19.192	2716	2721	2725	rBV2	95234	165246	2.87%	0.229%
79	19.339	2741	2746	2753	rBV4	77685	178365	3.10%	0.247%
80	19.456	2755	2766	2772	rBV	1411077	2068821	35.95%	2.863%
81	19.551	2778	2782	2788	rBV	395214	528327	9.18%	0.731%
82	19.604	2788	2791	2795	rVB	73162	101346	1.76%	0.140%
83	19.792	2817	2823	2826	rBV	4186008	5755343	100.00%	7.964%
84	19.821	2826	2828	2834	rVV	1188114	1230484	21.38%	1.703%
85	19.886	2836	2839	2845	rVB3	67594	106418	1.85%	0.147%
86	20.133	2878	2881	2889	rVB6	80688	177469	3.08%	0.246%
87	20.280	2903	2906	2907	rBV3	62511	76415	1.33%	0.106%
88	20.303	2908	2910	2915	rVB2	182096	212358	3.69%	0.294%
89	20.609	2959	2962	2964	rBV	61577	81547	1.42%	0.113%
90	20.756	2985	2987	2991	rVB2	154530	165837	2.88%	0.229%
91	21.050	3034	3037	3042	rBV	133588	179866	3.13%	0.249%
92	21.262	3069	3073	3077	rBV	1121788	1357867	23.59%	1.879%
93	21.574	3120	3126	3130	rBV2	2088687	3251932	56.50%	4.500%
94	21.609	3130	3132	3139	rVB	567453	714860	12.42%	0.989%
95	23.233	3405	3408	3411	rBV	221643	327007	5.68%	0.452%
96	23.280	3411	3416	3429	rVB	551960	1776936	30.87%	2.459%
97	23.809	3502	3506	3510	rBV2	257437	455932	7.92%	0.631%
98	23.868	3510	3516	3521	rBV2	1957864	3706819	64.41%	5.129%
99	24.027	3537	3543	3549	rBV2	1018243	2000505	34.76%	2.768%
100	24.715	3655	3660	3671	rVB2	362625	864069	15.01%	1.196%

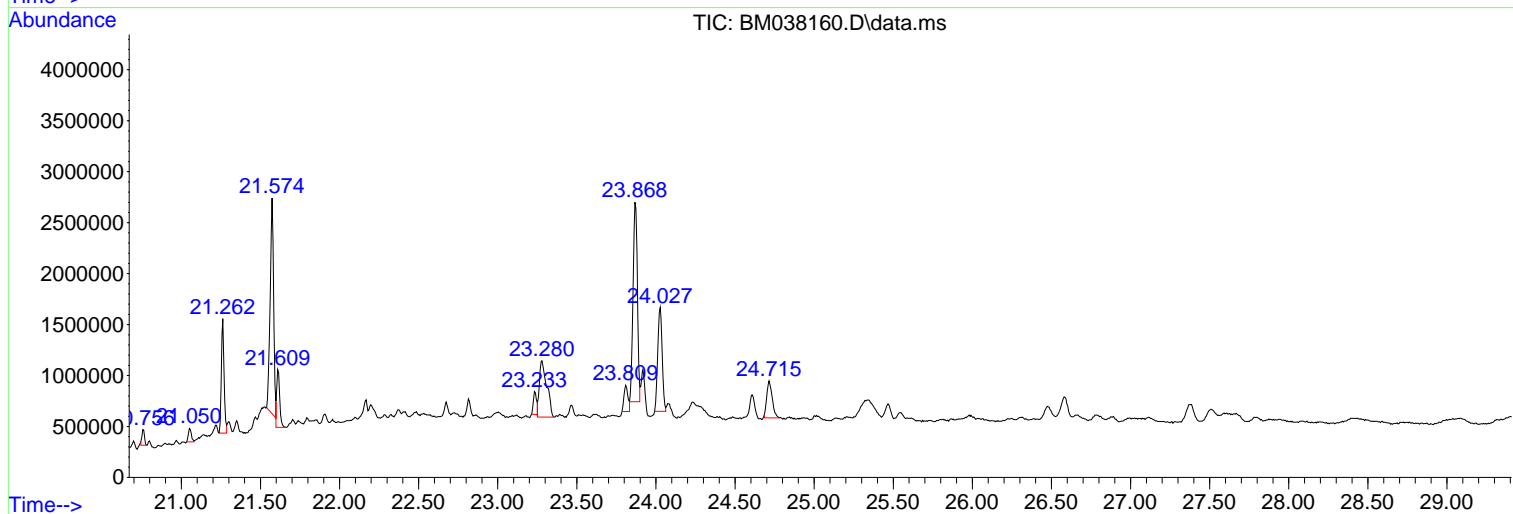
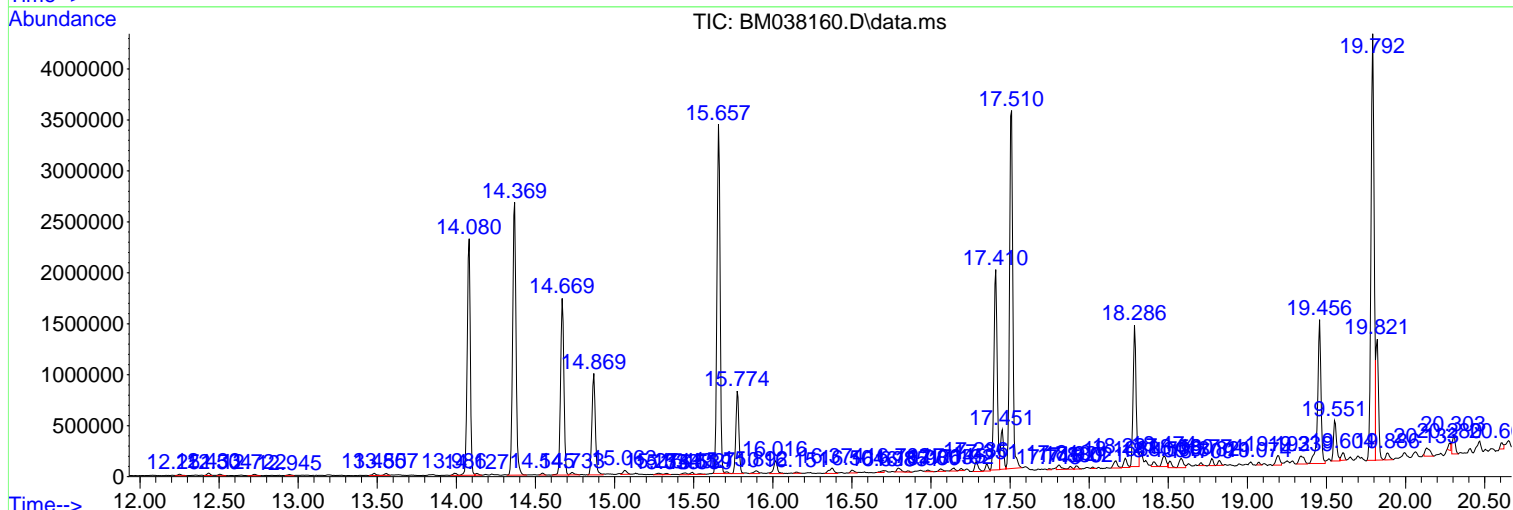
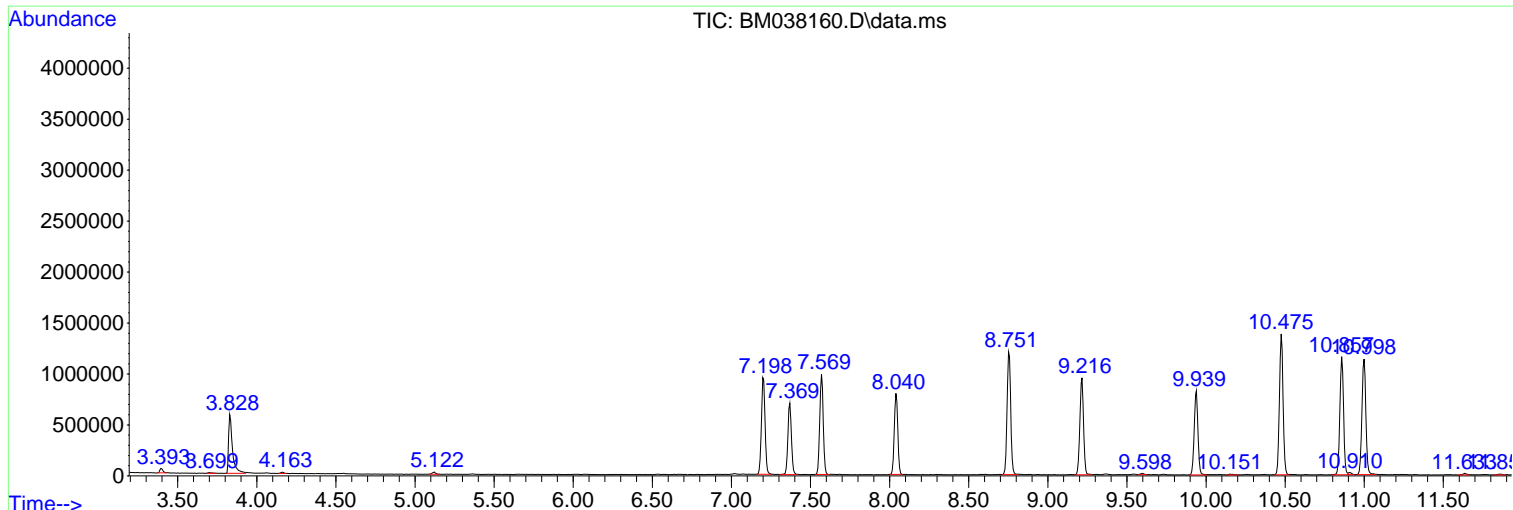
Sum of corrected areas: 72270889

Data Path : Z:\svoasrv\HPCHEM1\BNA\_M\Data\BM122022\  
 Data File : BM038160.D  
 Acq On : 21 Dec 2022 07:19  
 Operator : CG/JU  
 Sample : N6008-20  
 Misc :  
 ALS Vial : 27 Sample Multiplier: 1

Instrument :  
 BNA\_M  
 ClientSampleId :  
 DBXY2

Quant Method : Z:\svoasrv\HPCHEM1\BNA\_M\Methods\SFAM-EPA-BM120722.M  
 Quant Title : SVOA CALIBRATION

TIC Library : C:\Database\NIST20.L  
 TIC Integration Parameters: LSCINT.P



Data Path : Z:\svoasrv\HPCHEM1\BNA\_M\Data\BM122022\  
 Data File : BM038160.D  
 Acq On : 21 Dec 2022 07:19  
 Operator : CG/JU  
 Sample : N6008-20  
 Misc :  
 ALS Vial : 27 Sample Multiplier: 1

Instrument :  
 BNA\_M  
 ClientSampleId :  
 DBXY2

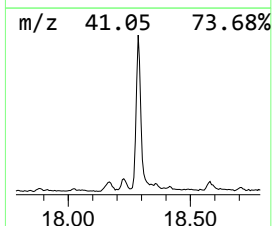
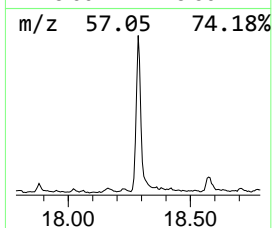
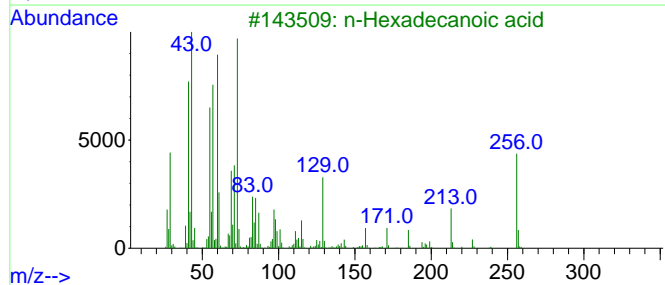
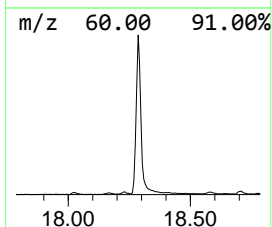
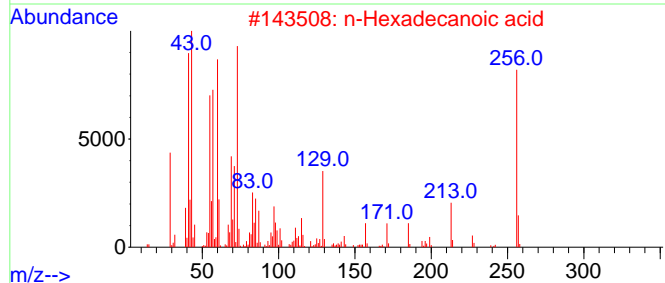
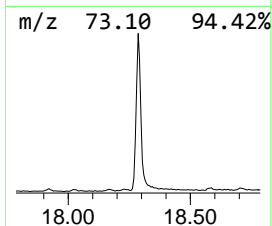
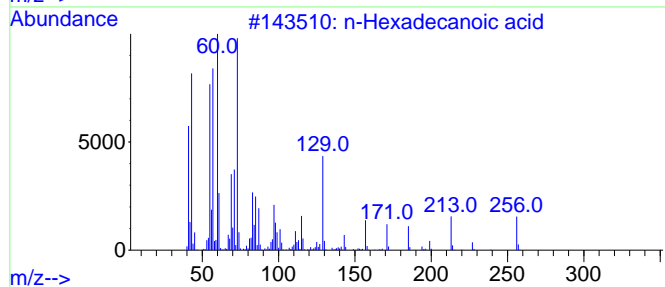
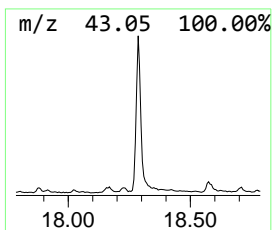
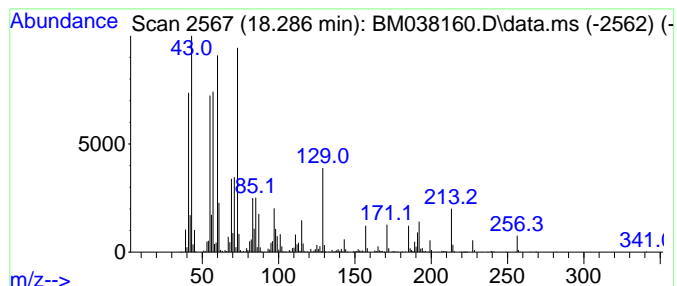
Quant Method : Z:\svoasrv\HPCHEM1\BNA\_M\Methods\SFAM-EPA-BM120722.M  
 Quant Title : SVOA CALIBRATION

TIC Library : C:\Database\NIST20.L  
 TIC Integration Parameters: LSCINT.P

\*\*\*\*\*  
 Peak Number 1 n-Hexadecanoic acid Concentration Rank 1

R.T.	EstConc	Area	Relative to ISTD	R.T.
18.286	13.23 ng/ul	1858190	Phenanthrene-d10	17.410

Hit#	of 5	Tentative ID	MW	MolForm	CAS#	Qual
1		n-Hexadecanoic acid	256	C16H32O2	000057-10-3	95
2		n-Hexadecanoic acid	256	C16H32O2	000057-10-3	93
3		n-Hexadecanoic acid	256	C16H32O2	000057-10-3	93
4		Pentadecanoic acid	242	C15H30O2	001002-84-2	90
5		Tridecanoic acid	214	C13H26O2	000638-53-9	90



Data Path : Z:\svoasrv\HPCHEM1\BNA\_M\Data\BM122022\  
 Data File : BM038160.D  
 Acq On : 21 Dec 2022 07:19  
 Operator : CG/JU  
 Sample : N6008-20  
 Misc :  
 ALS Vial : 27 Sample Multiplier: 1

Instrument :  
 BNA\_M  
 ClientSampleId :  
 DBXY2

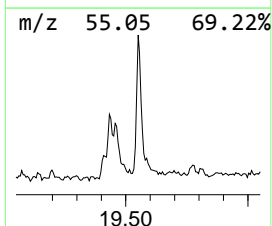
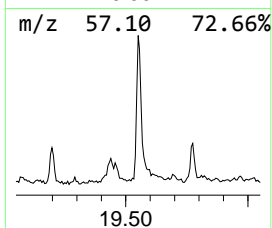
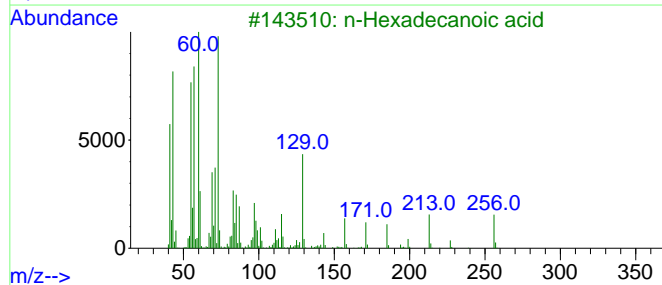
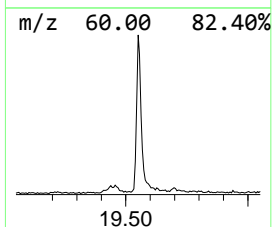
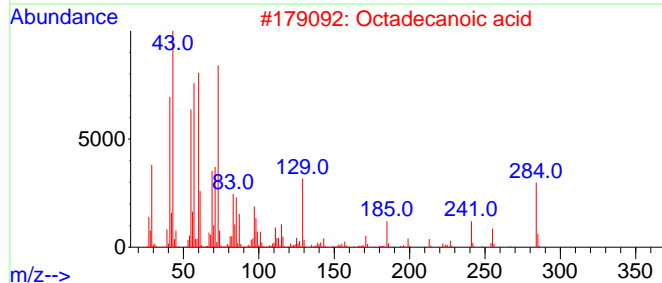
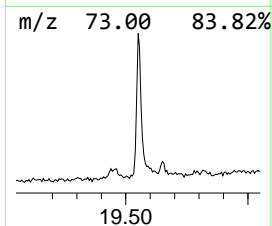
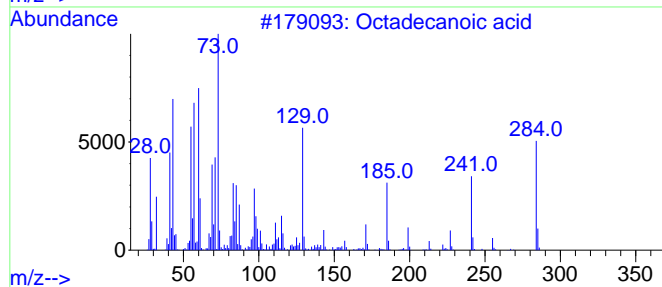
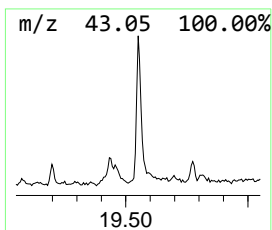
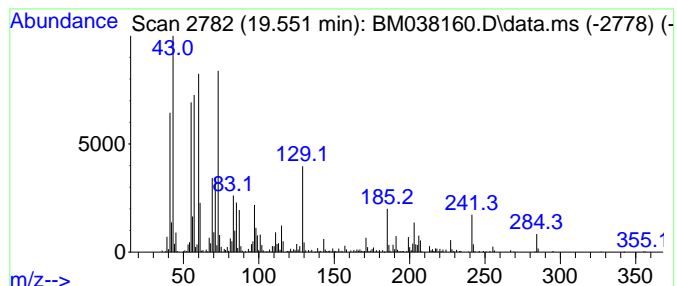
Quant Method : Z:\svoasrv\HPCHEM1\BNA\_M\Methods\SFAM-EPA-BM120722.M  
 Quant Title : SVOA CALIBRATION

TIC Library : C:\Database\NIST20.L  
 TIC Integration Parameters: LSCINT.P

\*\*\*\*\*  
 Peak Number 2 Octadecanoic acid Concentration Rank 5

R.T.	EstConc	Area	Relative to ISTD	R.T.
19.551	3.25 ng/ul	528327	Chrysene-d12	21.574

Hit#	of	Tentative ID	MW	MolForm	CAS#	Qual
1	5	Octadecanoic acid	284	C18H36O2	000057-11-4	99
2		Octadecanoic acid	284	C18H36O2	000057-11-4	95
3		n-Hexadecanoic acid	256	C16H32O2	000057-10-3	94
4		Octadecanoic acid	284	C18H36O2	000057-11-4	94
5		Pentadecanoic acid	242	C15H30O2	001002-84-2	93



Data Path : Z:\svoasrv\HPCHEM1\BNA\_M\Data\BM122022\  
 Data File : BM038160.D  
 Acq On : 21 Dec 2022 07:19  
 Operator : CG/JU  
 Sample : N6008-20  
 Misc :  
 ALS Vial : 27 Sample Multiplier: 1

Instrument :  
 BNA\_M  
 ClientSampleId :  
 DBXY2

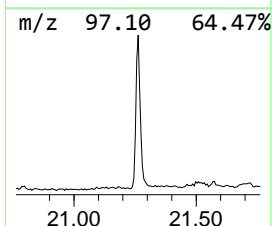
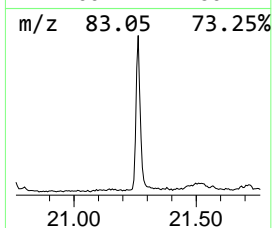
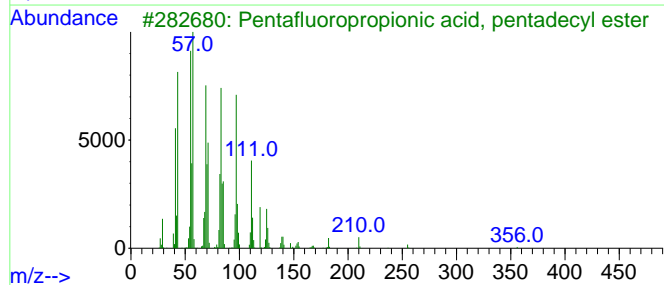
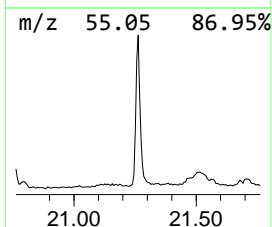
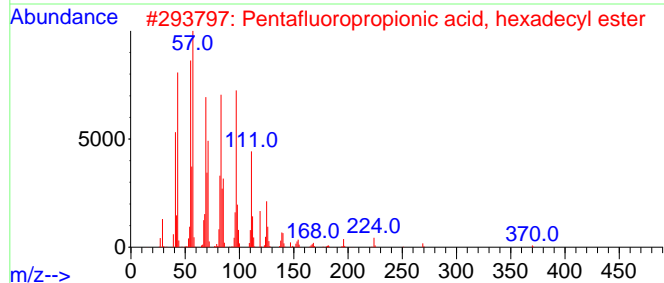
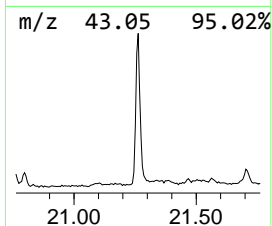
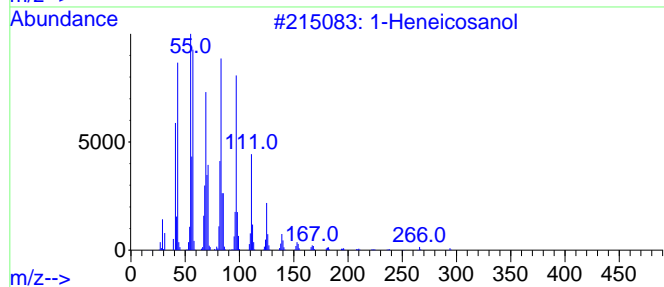
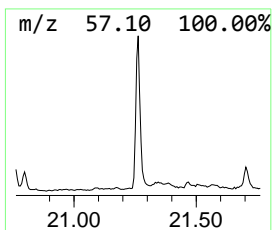
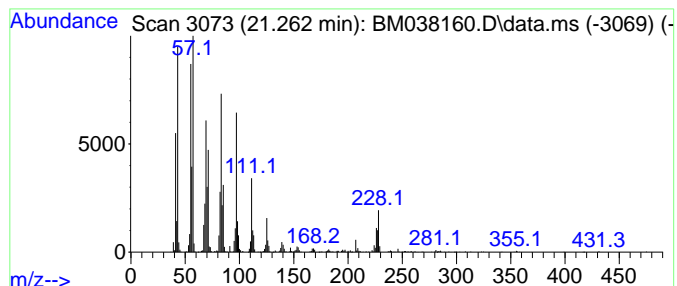
Quant Method : Z:\svoasrv\HPCHEM1\BNA\_M\Methods\SFAM-EPA-BM120722.M  
 Quant Title : SVOA CALIBRATION

TIC Library : C:\Database\NIST20.L  
 TIC Integration Parameters: LSCINT.P

\*\*\*\*\*  
 Peak Number 3 1-Heneicosanol Concentration Rank 3

R.T.	EstConc	Area	Relative to ISTD	R.T.
21.262	8.35 ng/ul	1357870	Chrysene-d12	21.574

Hit#	of	5	Tentative ID	MW	MolForm	CAS#	Qual
1			1-Heneicosanol	312	C21H44O	015594-90-8	93
2			Pentafluoropropionic acid, hexadecyl ester	388	C19H33F5O2	006222-07-7	91
3			Pentafluoropropionic acid, pentadecyl ester	374	C18H31F5O2	959092-08-1	91
4			Heptadecyl trifluoroacetate	352	C19H35F3O2	1010351-87-0	87
5			Octacosanol	410	C28H58O	000557-61-9	87



Data Path : Z:\svoasrv\HPCHEM1\BNA\_M\Data\BM122022\  
 Data File : BM038160.D  
 Acq On : 21 Dec 2022 07:19  
 Operator : CG/JU  
 Sample : N6008-20  
 Misc :  
 ALS Vial : 27 Sample Multiplier: 1

Instrument :  
 BNA\_M  
 ClientSampleId :  
 DBXY2

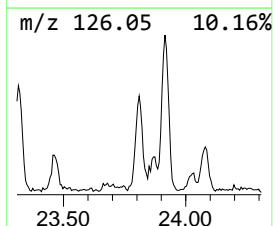
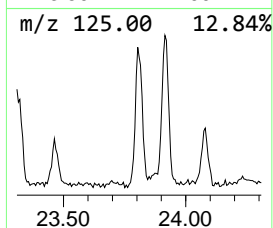
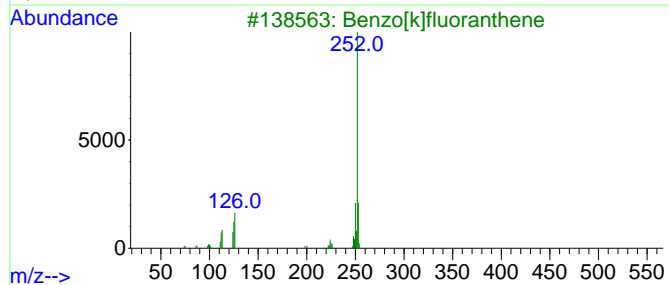
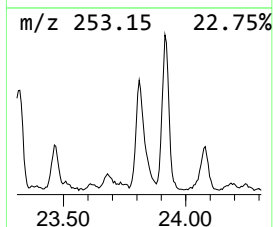
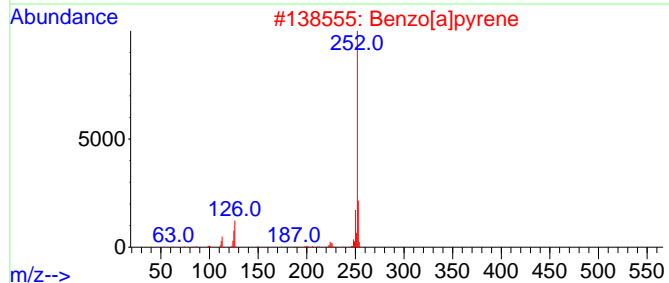
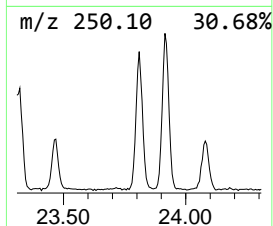
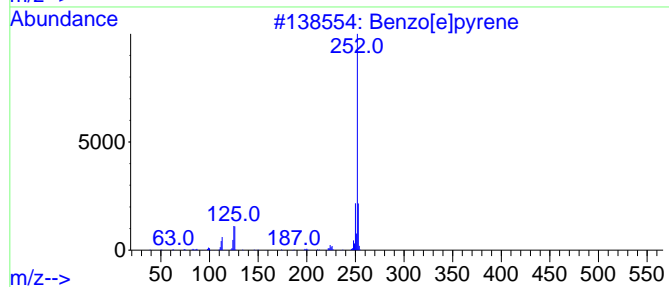
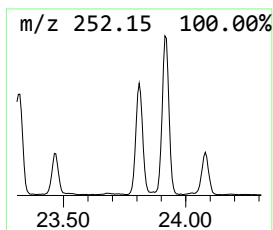
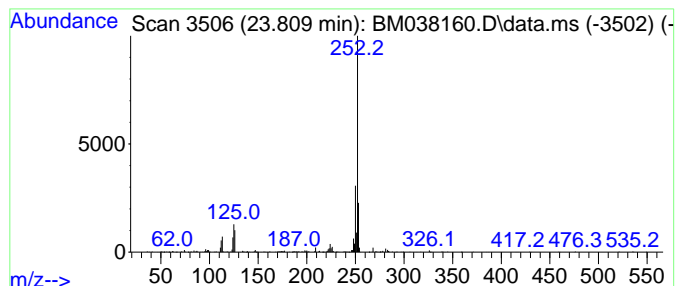
Quant Method : Z:\svoasrv\HPCHEM1\BNA\_M\Methods\SFAM-EPA-BM120722.M  
 Quant Title : SVOA CALIBRATION

TIC Library : C:\Database\NIST20.L  
 TIC Integration Parameters: LSCINT.P

\*\*\*\*\*  
 Peak Number 4 Benzo[e]pyrene Concentration Rank 4

R.T.	EstConc	Area	Relative to ISTD	R.T.
23.809	4.56 ng/ul	455932	Perylene-d12	24.027

Hit#	of	5	Tentative ID	MW	MolForm	CAS#	Qual
1			Benzo[e]pyrene	252	C20H12	000192-97-2	99
2			Benzo[a]pyrene	252	C20H12	000050-32-8	96
3			Benzo[k]fluoranthene	252	C20H12	000207-08-9	95
4			Benzo[k]fluoranthene	252	C20H12	000207-08-9	95
5			Benzo[b]fluoranthene	252	C20H12	000205-99-2	94





Data Path : Z:\svoasrv\HPCHEM1\BNA\_M\Data\BM122022\  
 Data File : BM038160.D  
 Acq On : 21 Dec 2022 07:19  
 Operator : CG/JU  
 Sample : N6008-20  
 Misc :  
 ALS Vial : 27 Sample Multiplier: 1

Instrument :  
 BNA\_M  
 ClientSampleId :  
 DBXY2

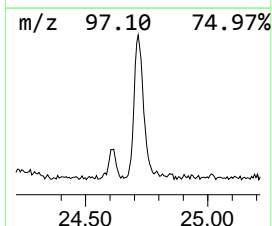
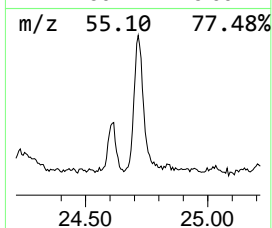
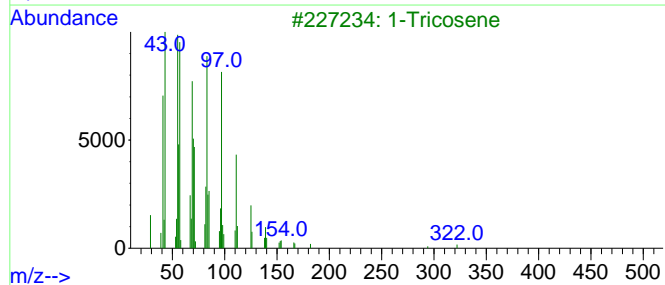
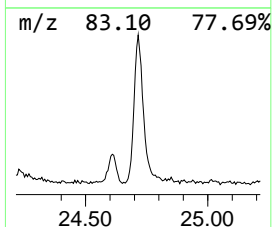
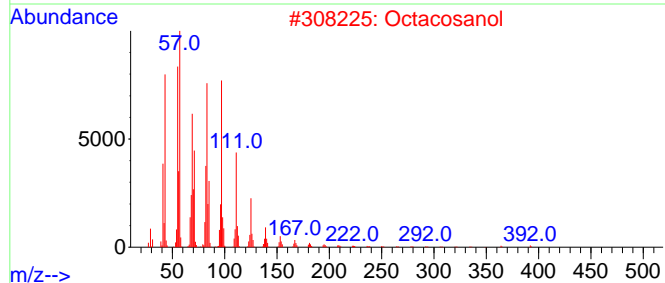
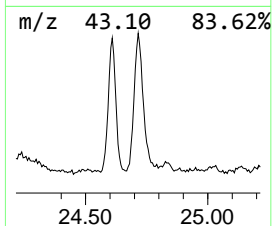
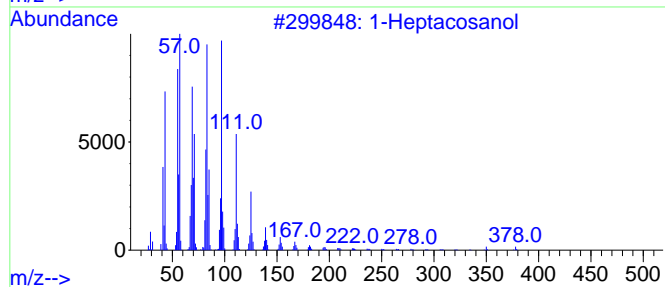
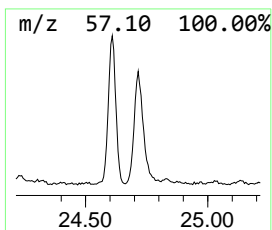
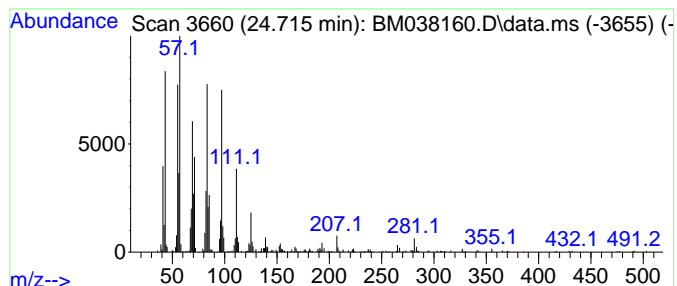
Quant Method : Z:\svoasrv\HPCHEM1\BNA\_M\Methods\SFAM-EPA-BM120722.M  
 Quant Title : SVOA CALIBRATION

TIC Library : C:\Database\NIST20.L  
 TIC Integration Parameters: LSCINT.P

\*\*\*\*\*  
 Peak Number 5 1-Heptacosanol Concentration Rank 2

R.T.	EstConc	Area	Relative to ISTD	R.T.
24.715	8.64 ng/ul	864069	Perylene-d12	24.027

Hit#	of 5	Tentative ID	MW	MolForm	CAS#	Qual
1		1-Heptacosanol	396	C27H56O	002004-39-9	95
2		Octacosanol	410	C28H58O	000557-61-9	94
3		1-Tricosene	322	C23H46	018835-32-0	91
4		Heptacos-1-ene	378	C27H54	015306-27-1	87
5		1-Hexacosanol	382	C26H54O	000506-52-5	87



Data Path : Z:\svoasrv\HPCHEM1\BNA\_M\Data\BM122022\  
 Data File : BM038160.D  
 Acq On : 21 Dec 2022 07:19  
 Operator : CG/JU  
 Sample : N6008-20  
 Misc :  
 ALS Vial : 27 Sample Multiplier: 1

Instrument :  
 BNA\_M  
 ClientSampleId :  
 DBXY2

Quant Method : Z:\svoasrv\HPCHEM1\BNA\_M\Methods\SFAM-EPA-BM120722.M  
 Quant Title : SVOA CALIBRATION

TIC Library : C:\Database\NIST20.L  
 TIC Integration Parameters: LSCINT.P

TIC Top Hit name	RT	EstConc	Units	Response	--Internal Standard--			
					#	RT	Resp	Conc
n-Hexadecanoic ...	18.286	13.2	ng/u1	1858190	4	17.410	2808840	20.0
Octadecanoic acid	19.551	3.3	ng/u1	528327	5	21.574	3251930	20.0
1-Heneicosanol	21.262	8.3	ng/u1	1357870	5	21.574	3251930	20.0
Benzo[e]pyrene	23.809	4.6	ng/u1	455932	6	24.027	2000510	20.0
1-Heptacosanol	24.715	8.6	ng/u1	864069	6	24.027	2000510	20.0