

Data Path : Z:\svoasrv\HPCHEM1\BNA_M\Data\BM122222\
 Data File : BM038219.D
 Acq On : 23 Dec 2022 04:05
 Operator : CG/JU
 Sample : N6008-17
 Misc :
 ALS Vial : 25 Sample Multiplier: 1

Instrument :
 BNA_M
 ClientSampleId :
 DBXX9

Manual Integrations
 APPROVED

Reviewed By :Jagrut Upadhyay 12/23/2022
 Supervised By :mohammad ahmed 12/23/2022

Quant Time: Dec 23 04:54:38 2022
 Quant Method : Z:\SVOASRV\HPCHEM1\BNA_M\METHODS\SFAM-EPA-SIM-BM122222.M
 Quant Title : ASP BNA STANDARDS FOR 5 POINT CALIBRATION
 QLast Update : Thu Dec 22 23:36:45 2022
 Response via : Initial Calibration

Compound	R.T.	QIon	Response	Conc	Units	Dev(Min)
Internal Standards						
1) 1,4-Dichlorobenzene-d4	8.038	152	4203	0.400	ng/ul	0.00
4) Naphthalene-d8	10.851	136	13145	0.400	ng/ul	0.00
9) Acenaphthene-d10	14.666	164	7574	0.400	ng/ul	0.00
13) Phenanthrene-d10	17.405	188	15749	0.400	ng/ul	0.00
17) Chrysene-d12	21.571	240	9954	0.400	ng/ul #	0.00
23) Perylene-d12	24.021	264	9739	0.400	ng/ul	0.00
System Monitoring Compounds						
3) 1,4-Dioxane-d8	3.393	96	16508	3.861	ng/ul	0.00
6) 2-Methylnaphthalene-d10	12.434	152	6276	0.324	ng/ul	0.00
18) Fluoranthene-d10	19.422	212	13419	0.359	ng/ul	0.00
Target Compounds						
						Qvalue
15) Phenanthrene	17.447	178	4467	0.085	ng/ul#	93
19) Fluoranthene	19.455	202	11659	0.214	ng/ul#	90
20) Pyrene	19.817	202	9201m	0.167	ng/ul	
21) Benzo(a)anthracene	21.553	228	4841	0.111	ng/ul#	90
22) Chrysene	21.609	228	5552	0.131	ng/ul#	94
24) Benzo(b)fluoranthene	23.272	252	7809	0.181	ng/ul#	63
25) Benzo(k)fluoranthene	23.319	252	2908m	0.070	ng/ul	
26) Benzo(a)pyrene	23.912	252	4910	0.131	ng/ul#	61
27) Indeno(1,2,3-cd)pyrene	26.582	276	4059	0.078	ng/ul#	89
29) Benzo(g,h,i)perylene	27.377	276	3974	0.091	ng/ul#	76

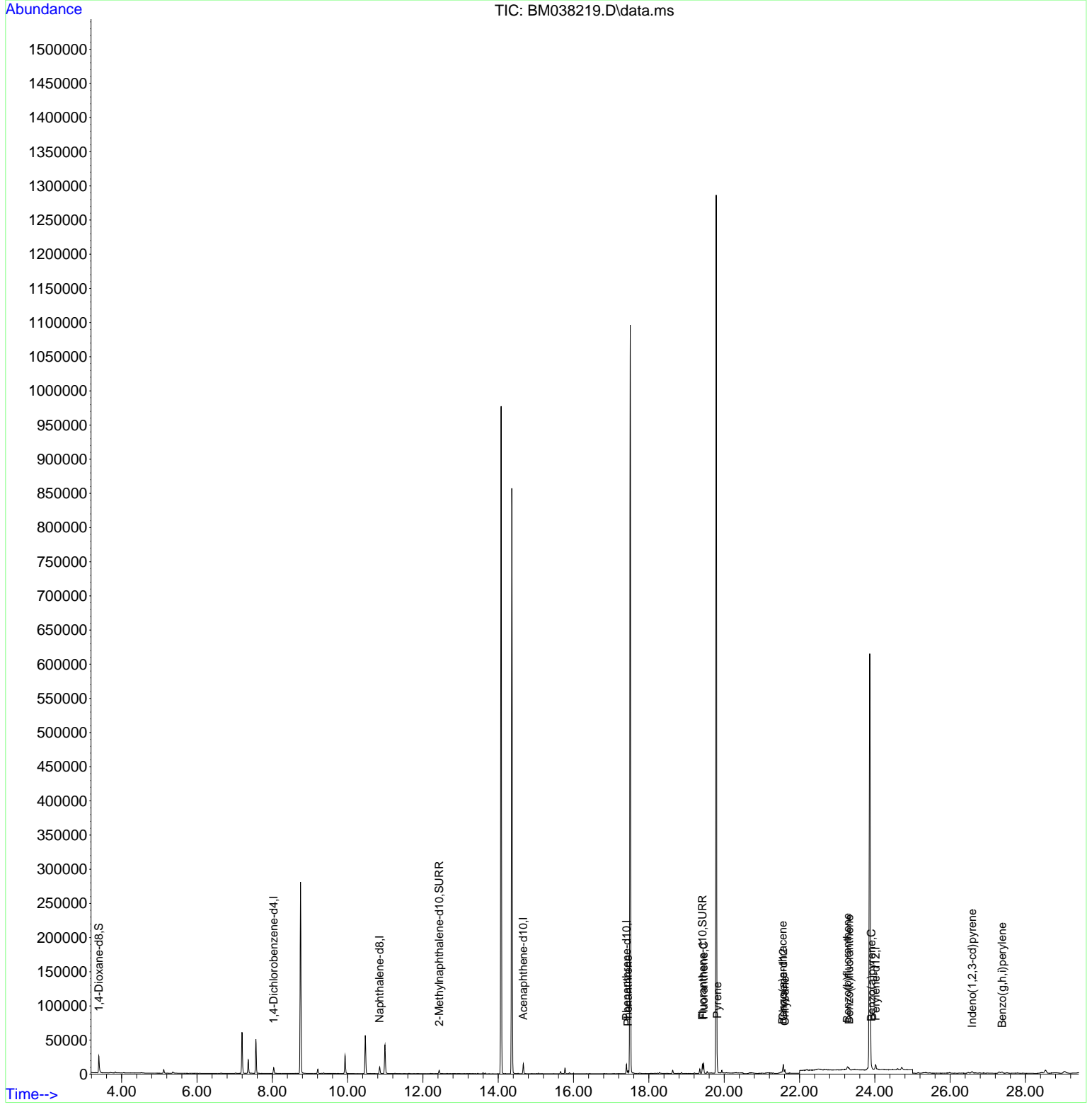
(#) = qualifier out of range (m) = manual integration (+) = signals summed

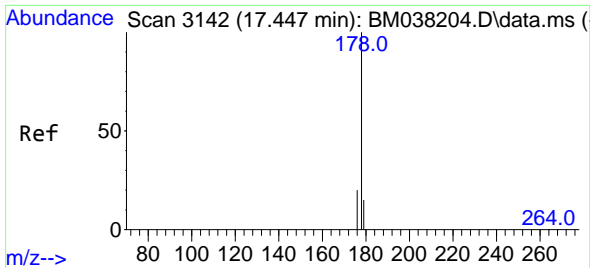
Data Path : Z:\svoasrv\HPCHEM1\BNA_M\Data\BM122222\
 Data File : BM038219.D
 Acq On : 23 Dec 2022 04:05
 Operator : CG/JU
 Sample : N6008-17
 Misc :
 ALS Vial : 25 Sample Multiplier: 1

Instrument :
 BNA_M
ClientSampleId :
 DBXX9

Quant Time: Dec 23 04:54:38 2022
 Quant Method : Z:\SVOASRV\HPCHEM1\BNA_M\METHODS\SFAM-EPA-SIM-BM122222.M
 Quant Title : ASP BNA STANDARDS FOR 5 POINT CALIBRATION
 QLast Update : Thu Dec 22 23:36:45 2022
 Response via : Initial Calibration

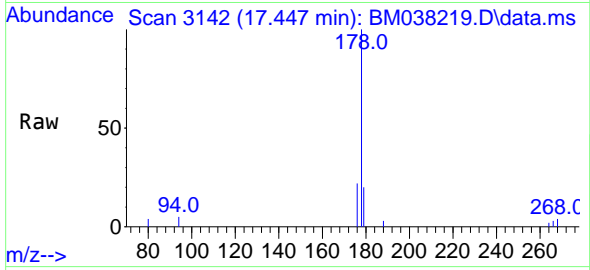
Manual Integrations
APPROVED
 Reviewed By :Jagrut Upadhyay 12/23/2022
 Supervised By :mohammad ahmed 12/23/2022





#15
 Phenanthrene
 Concen: 0.085 ng/u1
 RT: 17.447 min Scan# 3142
 Delta R.T. 0.000 min
 Lab File: BM038219.D
 Acq: 23 Dec 2022 04:05

Instrument :
 BNA_M
 ClientSampleId :
 DBXX9

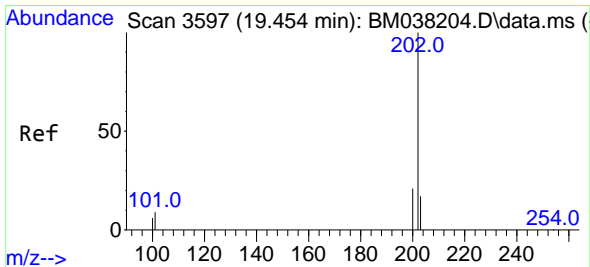
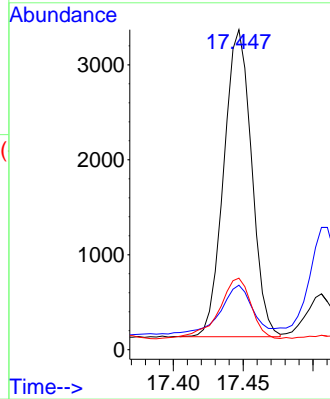
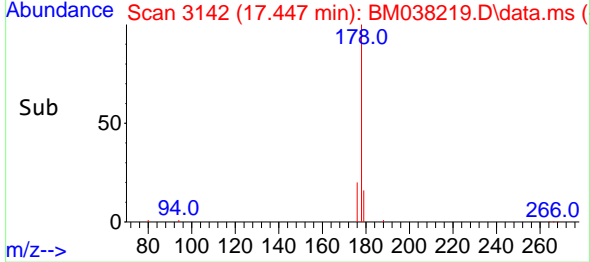


Tgt Ion:178 Resp: 446

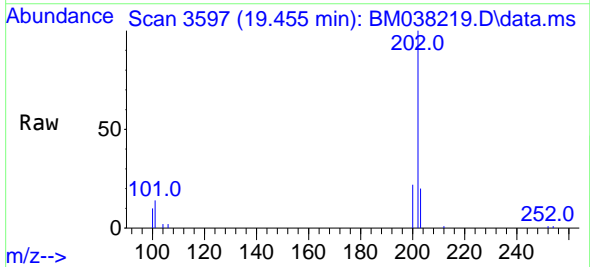
Ion	Ratio	Lower	Upper
178	100		
179	20.1	13.0	19.4
176	22.4	16.2	24.4

Manual Integrations
 APPROVED

Reviewed By :Jagrut Upadhyay 12/23/2022
 Supervised By :mohammad ahmed 12/23/2022

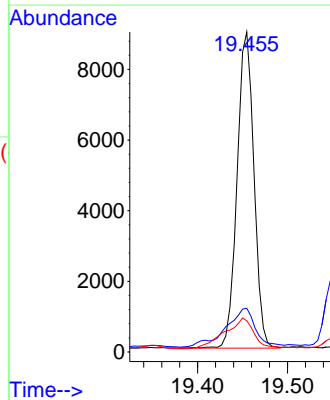
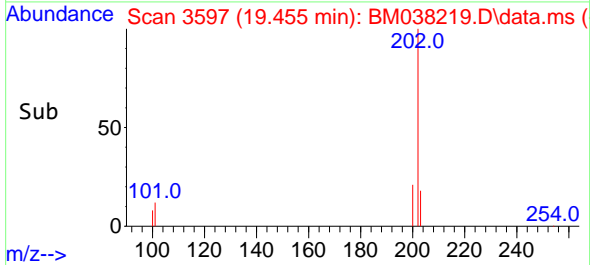


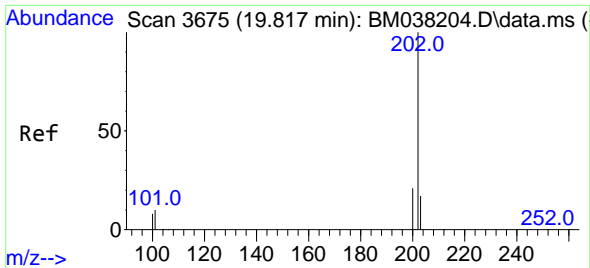
#19
 Fluoranthene
 Concen: 0.214 ng/u1
 RT: 19.455 min Scan# 3597
 Delta R.T. 0.000 min
 Lab File: BM038219.D
 Acq: 23 Dec 2022 04:05



Tgt Ion:202 Resp: 11659

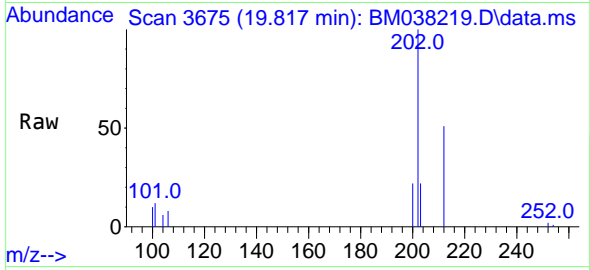
Ion	Ratio	Lower	Upper
202	100		
101	13.7	7.5	11.3#
100	9.7	5.6	8.4#





#20
 Pyrene
 Concen: 0.167 ng/ul m
 RT: 19.817 min Scan# 3
 Delta R.T. 0.000 min
 Lab File: BM038219.D
 Acq: 23 Dec 2022 04:05

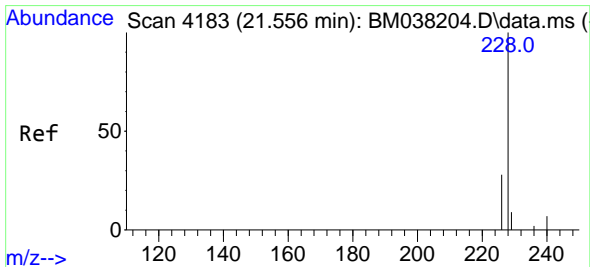
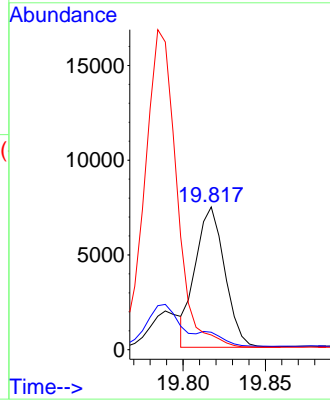
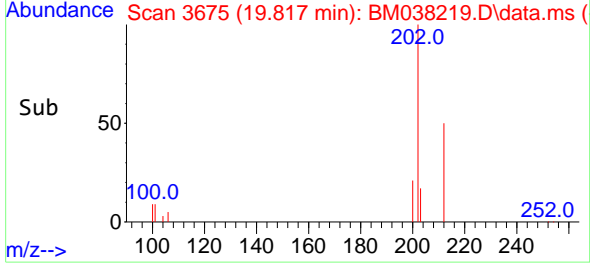
Instrument :
 BNA_M
 ClientSampleId :
 DBXX9



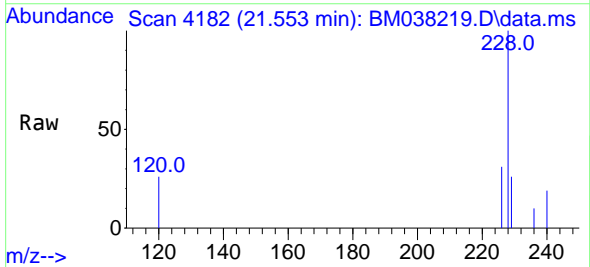
Tgt Ion:202 Resp: 920
 Ion Ratio Lower Upper
 202 100
 101 12.2 8.9 13.3
 100 10.3 7.4 11.0

Manual Integrations
 APPROVED

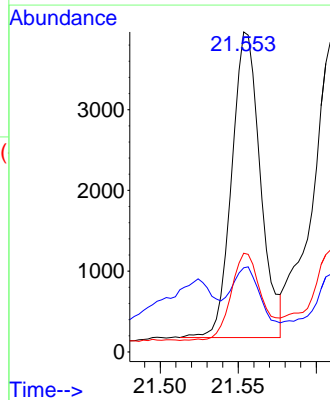
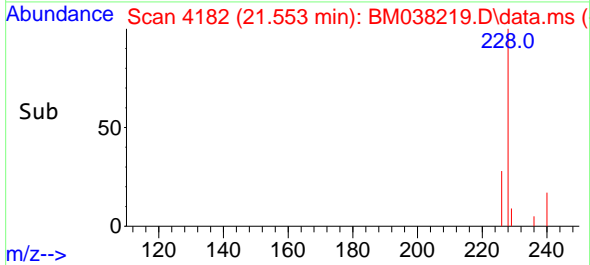
Reviewed By :Jagrut Upadhyay 12/23/2022
 Supervised By :mohammad ahmed 12/23/2022

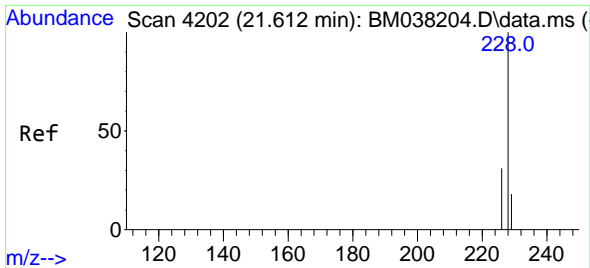


#21
 Benzo(a)anthracene
 Concen: 0.111 ng/ul
 RT: 21.553 min Scan# 4182
 Delta R.T. -0.006 min
 Lab File: BM038219.D
 Acq: 23 Dec 2022 04:05



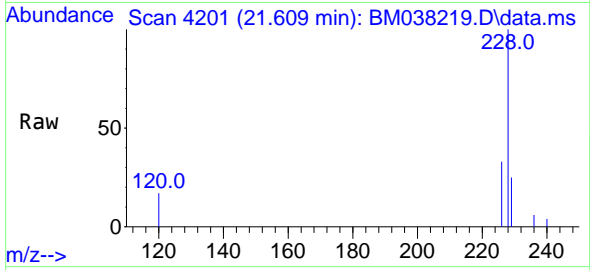
Tgt Ion:228 Resp: 4841
 Ion Ratio Lower Upper
 228 100
 229 26.3 15.5 23.3#
 226 30.8 22.2 33.2





#22
 Chrysene
 Concen: 0.131 ng/u1
 RT: 21.609 min Scan# 41
 Delta R.T. -0.003 min
 Lab File: BM038219.D
 Acq: 23 Dec 2022 04:05

Instrument :
 BNA_M
 ClientSampleId :
 DBXX9

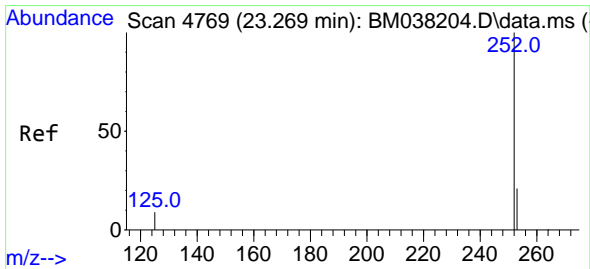
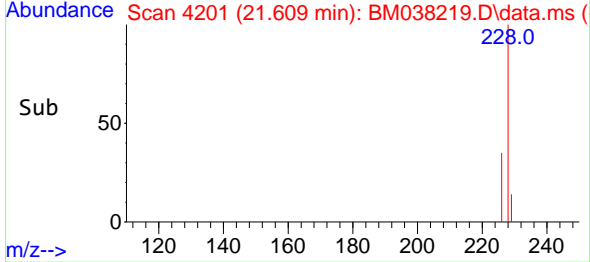
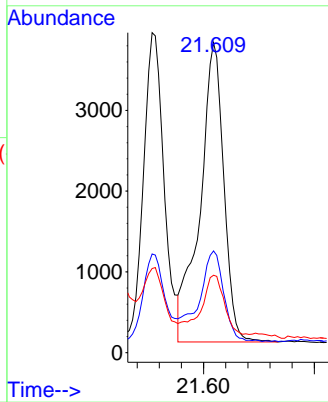


Tgt Ion:228 Resp: 555

Ion	Ratio	Lower	Upper
228	100		
226	32.8	25.0	37.4
229	25.0	16.0	24.0

Manual Integrations
 APPROVED

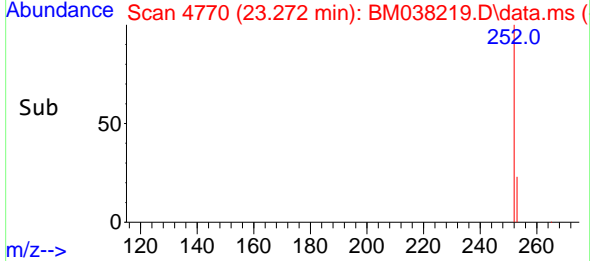
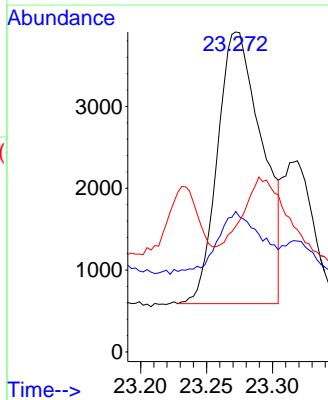
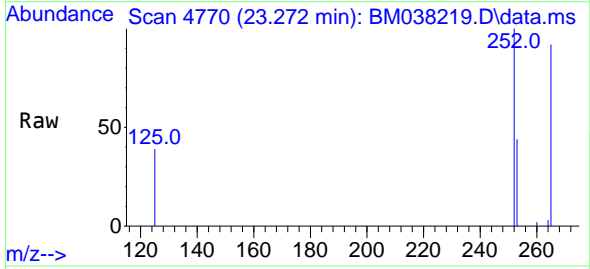
Reviewed By :Jagrut Upadhyay 12/23/2022
 Supervised By :mohammad ahmed 12/23/2022

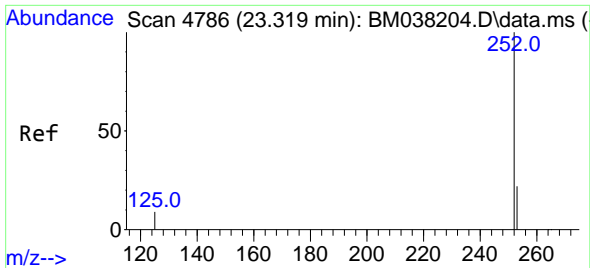


#24
 Benzo(b)fluoranthene
 Concen: 0.181 ng/u1
 RT: 23.272 min Scan# 4770
 Delta R.T. 0.000 min
 Lab File: BM038219.D
 Acq: 23 Dec 2022 04:05

Tgt Ion:252 Resp: 7809

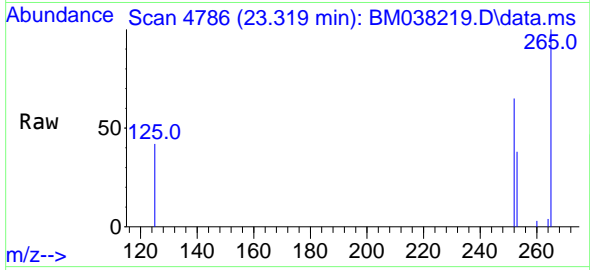
Ion	Ratio	Lower	Upper
252	100		
253	43.9	0.0	56.0
125	39.3	0.0	36.6





#25
 Benzo(k)fluoranthene
 Concen: 0.070 ng/u1 m
 RT: 23.319 min Scan# 4
 Delta R.T. -0.003 min
 Lab File: BM038219.D
 Acq: 23 Dec 2022 04:05

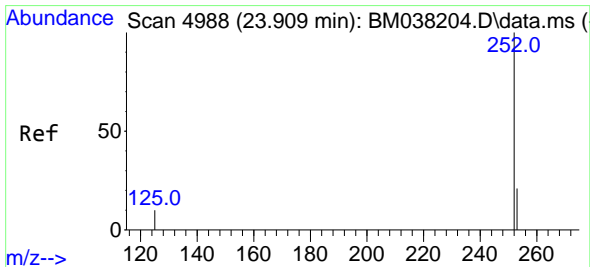
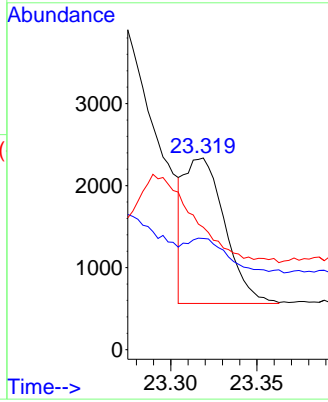
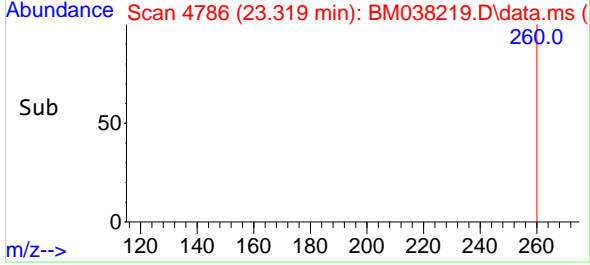
Instrument :
 BNA_M
 ClientSampleId :
 DBXX9



Tgt Ion:252 Resp: 2900
 Ion Ratio Lower Upper
 252 100
 253 58.0 22.5 33.7
 125 63.9 14.4 21.6

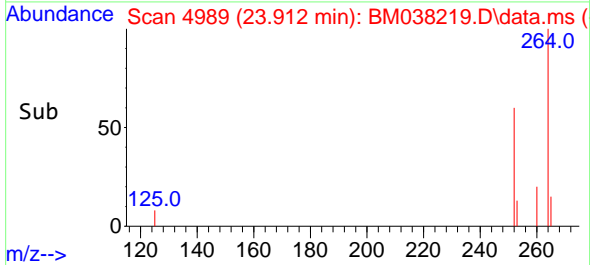
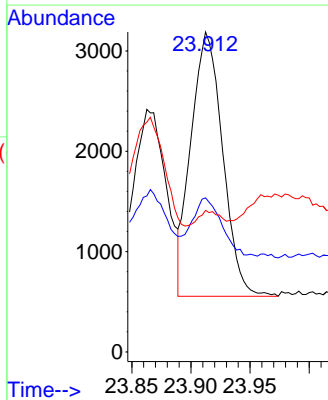
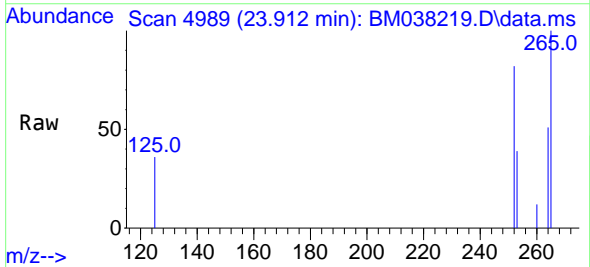
Manual Integrations
 APPROVED

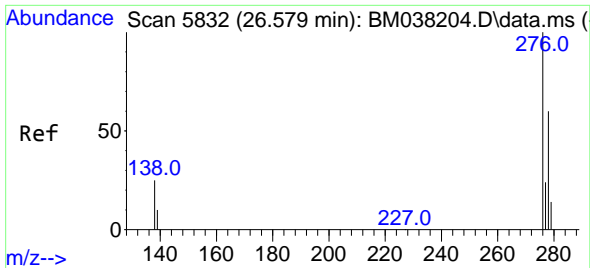
Reviewed By :Jagrut Upadhyay 12/23/2022
 Supervised By :mohammad ahmed 12/23/2022



#26
 Benzo(a)pyrene
 Concen: 0.131 ng/u1
 RT: 23.912 min Scan# 4989
 Delta R.T. 0.000 min
 Lab File: BM038219.D
 Acq: 23 Dec 2022 04:05

Tgt Ion:252 Resp: 4910
 Ion Ratio Lower Upper
 252 100
 253 48.2 24.2 36.4#
 125 44.2 17.3 25.9#





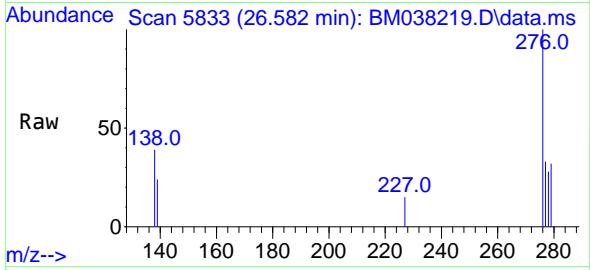
#27
 Indeno(1,2,3-cd)pyrene
 Concen: 0.078 ng/u1
 RT: 26.582 min Scan# 5833
 Delta R.T. 0.000 min
 Lab File: BM038219.D
 Acq: 23 Dec 2022 04:05

Instrument :

BNA_M

ClientSampleId :

DBXX9

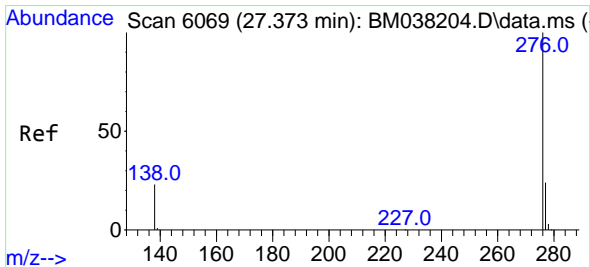
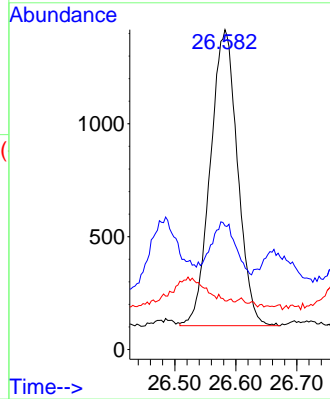
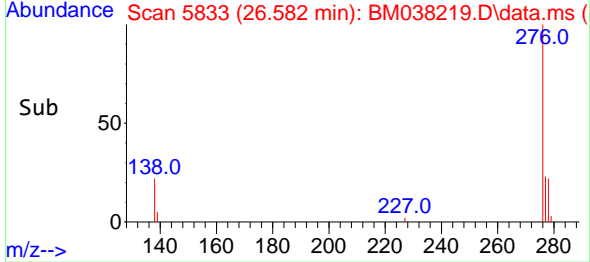


Tgt Ion:276 Resp: 4058
 Ion Ratio Lower Upper
 276 100
 138 21.3 21.7 32.5#
 227 0.0 0.0 0.0

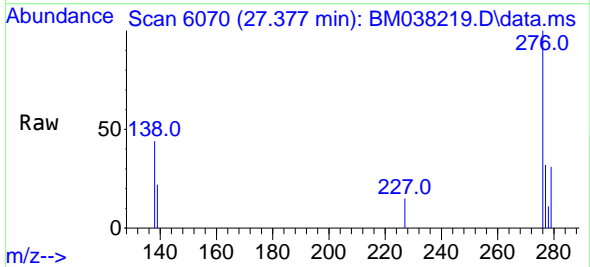
Manual Integrations

APPROVED

Reviewed By :Jagrut Upadhyay 12/23/2022
 Supervised By :mohammad ahmed 12/23/2022



#29
 Benzo(g,h,i)perylene
 Concen: 0.091 ng/u1
 RT: 27.377 min Scan# 6070
 Delta R.T. 0.007 min
 Lab File: BM038219.D
 Acq: 23 Dec 2022 04:05



Tgt Ion:276 Resp: 3974
 Ion Ratio Lower Upper
 276 100
 138 43.8 20.8 31.2#
 277 32.4 20.5 30.7#

