

Data Path : Z:\svoasrv\HPCHEM1\BNA\_M\Data\BM122324\  
 Data File : BM049189.D  
 Acq On : 24 Dec 2024 17:42  
 Operator : RC/JU  
 Sample : PB165780BS  
 Misc :  
 ALS Vial : 53 Sample Multiplier: 1

Instrument :  
 BNA\_M  
 ClientSampleId :

Quant Time: Dec 24 21:41:40 2024  
 Quant Method : Z:\svoasrv\HPCHEM1\BNA\_M\Methods\SFAM-EPA-SIM-BM121824.M  
 Quant Title : ASP BNA STANDARDS FOR 5 POINT CALIBRATION  
 QLast Update : Wed Dec 18 15:33:13 2024  
 Response via : Initial Calibration

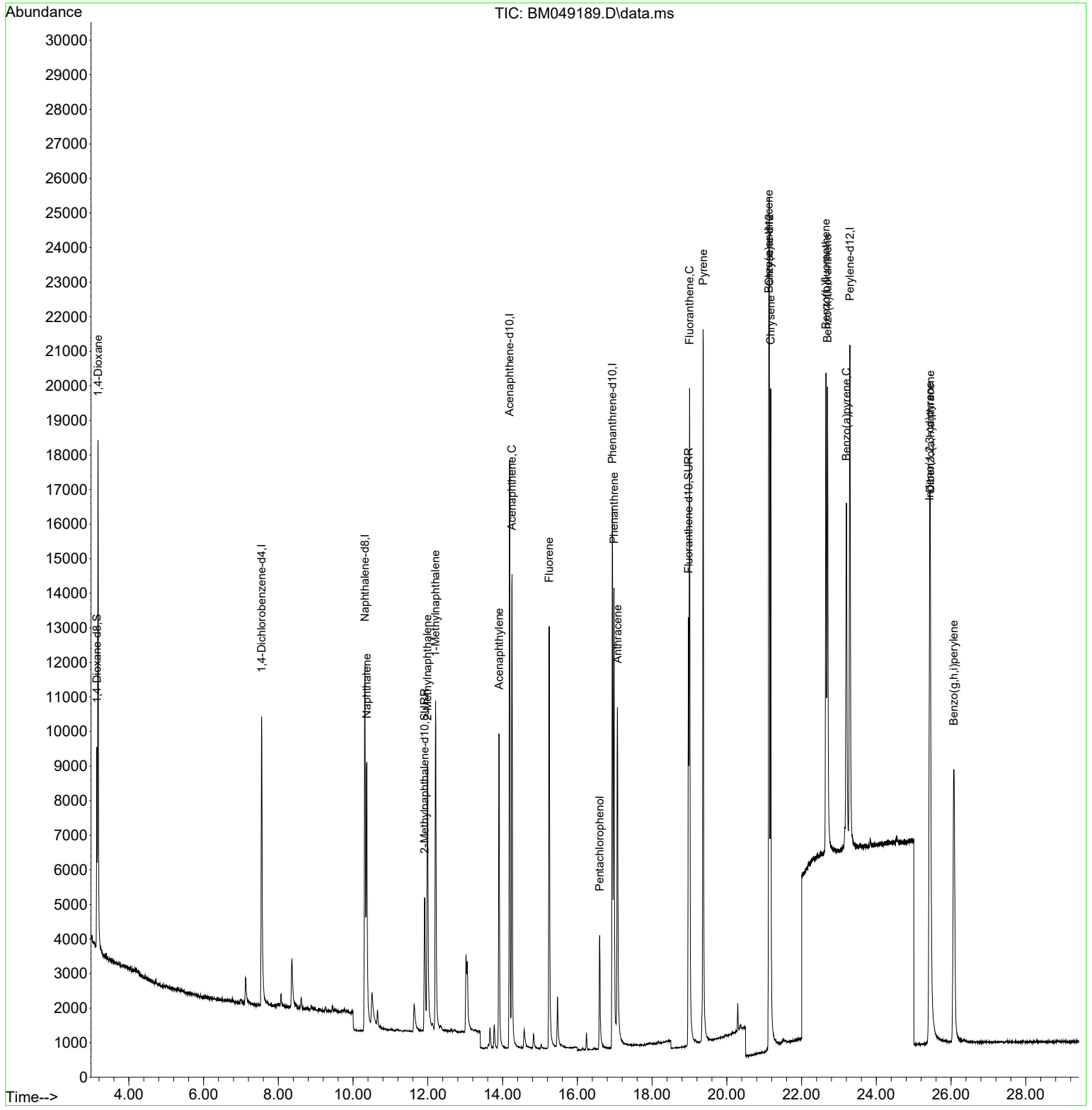
Compound	R.T.	QIon	Response	Conc	Units	Dev(Min)
Internal Standards						
1) 1,4-Dichlorobenzene-d4	7.552	152	5638	0.400	ng/ul	-0.02
4) Naphthalene-d8	10.315	136	17522	0.400	ng/ul	-0.02
9) Acenaphthene-d10	14.188	164	10418	0.400	ng/ul	-0.01
13) Phenanthrene-d10	16.939	188	21645	0.400	ng/ul	-0.01
17) Chrysene-d12	21.137	240	18090	0.400	ng/ul	0.00
23) Perylene-d12	23.294	264	19638	0.400	ng/ul	#-0.01
System Monitoring Compounds						
3) 1,4-Dioxane-d8	3.143	96	3388	0.521	ng/ul	0.00
6) 2-Methylnaphthalene-d10	11.915	152	7172	0.305	ng/ul	0.00
18) Fluoranthene-d10	18.974	212	15851	0.309	ng/ul	0.00
Target Compounds						
						Qvalue
2) 1,4-Dioxane	3.176	88	9472	1.246	ng/ul#	77
5) Naphthalene	10.365	128	12514	0.285	ng/ul	99
7) 2-Methylnaphthalene	11.987	142	7819	0.281	ng/ul	99
8) 1-Methylnaphthalene	12.207	142	7997	0.281	ng/ul	100
10) Acenaphthylene	13.905	152	11628	0.269	ng/ul	99
11) Acenaphthene	14.252	153	8625	0.274	ng/ul	99
12) Fluorene	15.247	166	9768	0.275	ng/ul	99
14) Pentachlorophenol	16.597	266	2952	0.493	ng/ul	96
15) Phenanthrene	16.981	178	15369	0.272	ng/ul	100
16) Anthracene	17.074	178	14117	0.272	ng/ul	98
19) Fluoranthene	19.002	202	18707	0.286	ng/ul	99
20) Pyrene	19.365	202	19806	0.284	ng/ul	99
21) Benzo(a)anthracene	21.122	228	16476	0.262	ng/ul	99
22) Chrysene	21.172	228	18874	0.279	ng/ul	99
24) Benzo(b)fluoranthene	22.651	252	17530	0.279	ng/ul	98
25) Benzo(k)fluoranthene	22.694	252	19216	0.279	ng/ul	98
26) Benzo(a)pyrene	23.197	252	16466	0.274	ng/ul	98
27) Indeno(1,2,3-cd)pyrene	25.427	276	22244	0.261	ng/ul#	96
28) Dibenzo(a,h)anthracene	25.443	278	17314	0.262	ng/ul	99
29) Benzo(g,h,i)perylene	26.074	276	18285	0.267	ng/ul	100

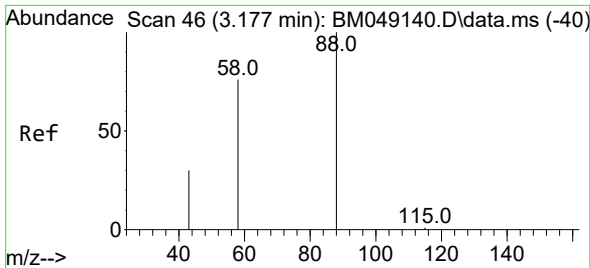
(#) = qualifier out of range (m) = manual integration (+) = signals summed

Data Path : Z:\svoasrv\HPCHEM1\BNA\_M\Data\BM122324\  
 Data File : BM049189.D  
 Acq On : 24 Dec 2024 17:42  
 Operator : RC/JU  
 Sample : PB165780BS  
 Misc :  
 ALS Vial : 53 Sample Multiplier: 1

Instrument :  
 BNA\_M  
 ClientSampleId :

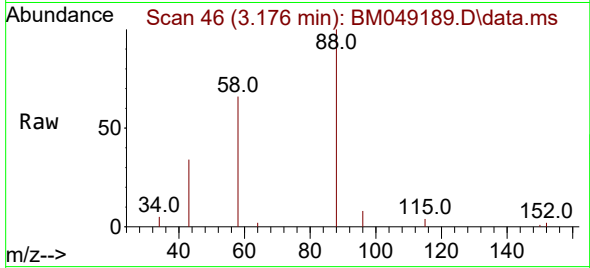
Quant Time: Dec 24 21:41:40 2024  
 Quant Method : Z:\svoasrv\HPCHEM1\BNA\_M\Methods\SFAM-EPA-SIM-BM121824.M  
 Quant Title : ASP BNA STANDARDS FOR 5 POINT CALIBRATION  
 QLast Update : Wed Dec 18 15:33:13 2024  
 Response via : Initial Calibration





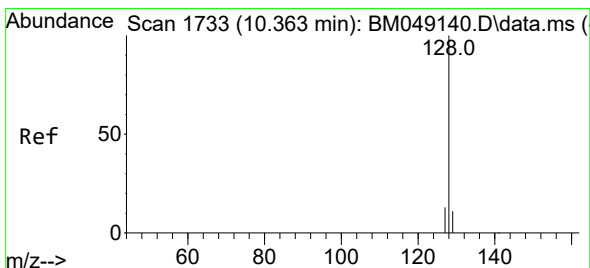
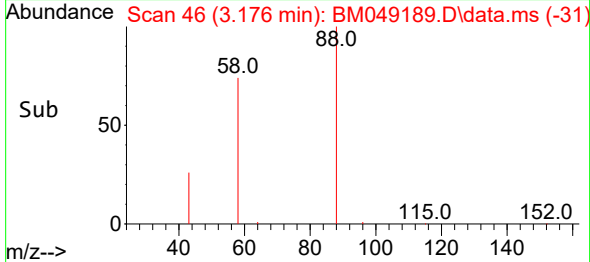
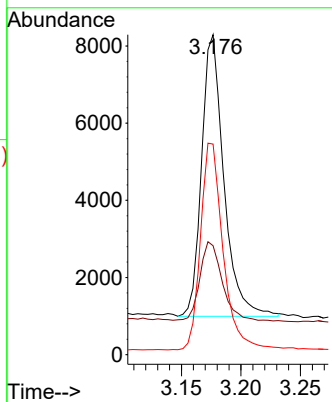
#2  
 1,4-Dioxane  
 Concen: 1.246 ng/ul  
 RT: 3.176 min Scan# 40  
 Delta R.T. -0.009 min  
 Lab File: BM049189.D  
 Acq: 24 Dec 2024 17:42

Instrument :  
 BNA\_M  
 ClientSampleId :



Tgt Ion: 88 Resp: 9472

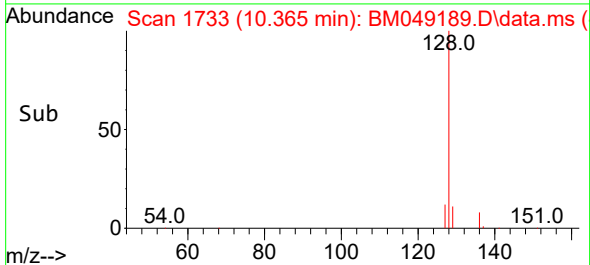
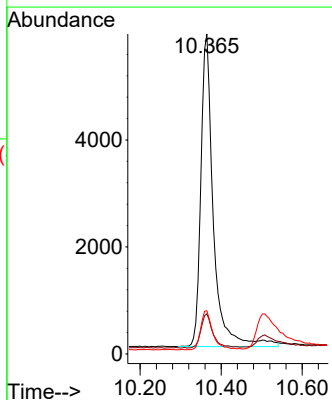
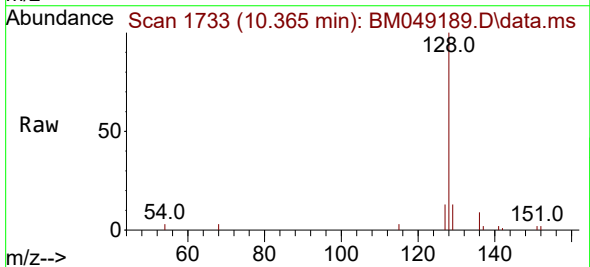
Ion	Ratio	Lower	Upper
88	100		
43	34.0	45.4	68.2#
58	65.8	43.6	65.4#

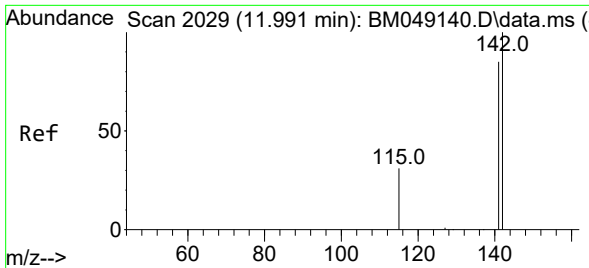


#5  
 Naphthalene  
 Concen: 0.285 ng/ul  
 RT: 10.365 min Scan# 1733  
 Delta R.T. -0.015 min  
 Lab File: BM049189.D  
 Acq: 24 Dec 2024 17:42

Tgt Ion: 128 Resp: 12514

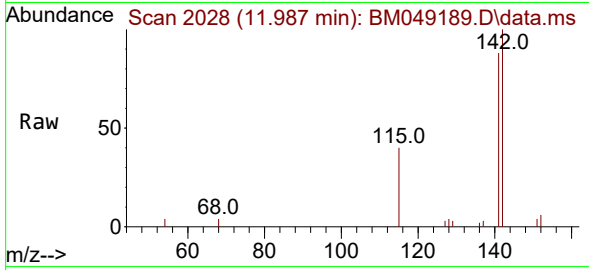
Ion	Ratio	Lower	Upper
128	100		
129	12.6	9.7	14.5
127	13.5	10.6	16.0



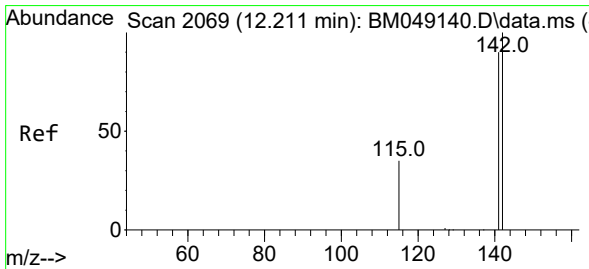
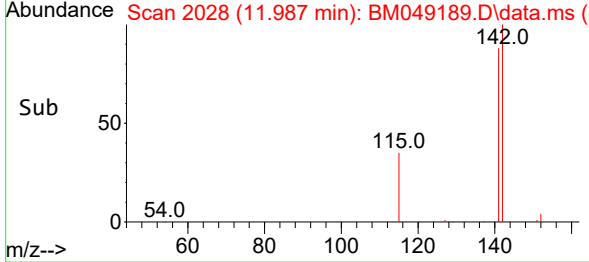
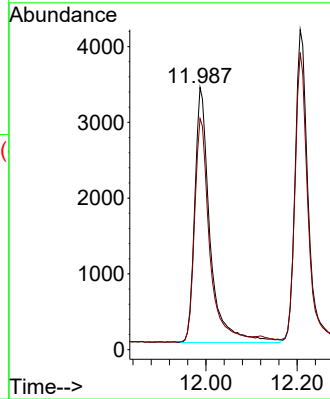


#7  
 2-Methylnaphthalene  
 Concen: 0.281 ng/ul  
 RT: 11.987 min Scan# 2029  
 Delta R.T. -0.015 min  
 Lab File: BM049189.D  
 Acq: 24 Dec 2024 17:42

Instrument : BNA\_M  
 ClientSampleId :

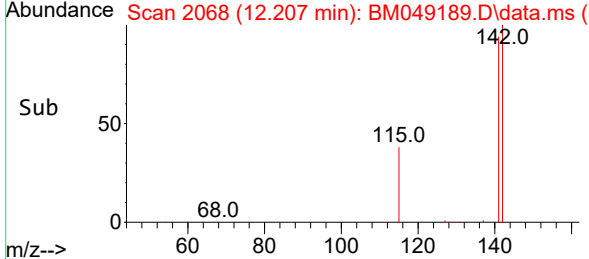
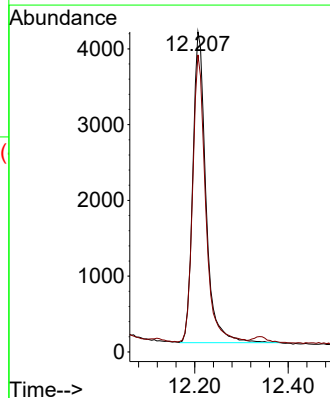
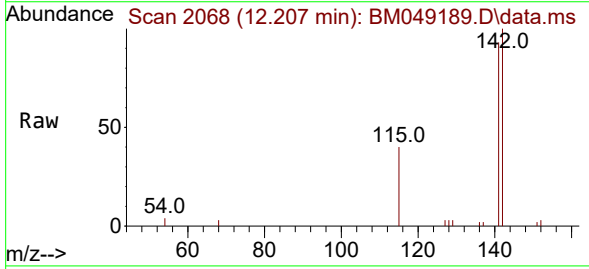


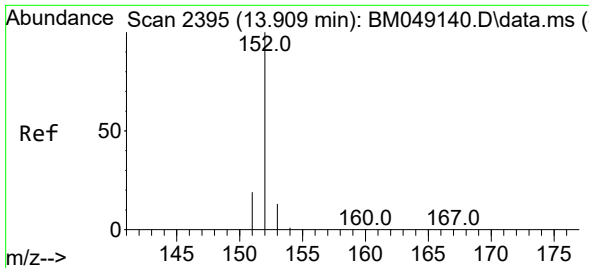
Tgt Ion:142 Resp: 7819  
 Ion Ratio Lower Upper  
 142 100  
 141 88.8 71.7 107.5



#8  
 1-Methylnaphthalene  
 Concen: 0.281 ng/ul  
 RT: 12.207 min Scan# 2068  
 Delta R.T. -0.015 min  
 Lab File: BM049189.D  
 Acq: 24 Dec 2024 17:42

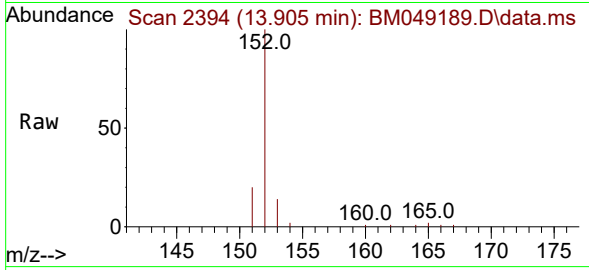
Tgt Ion:142 Resp: 7997  
 Ion Ratio Lower Upper  
 142 100  
 141 91.2 72.7 109.1





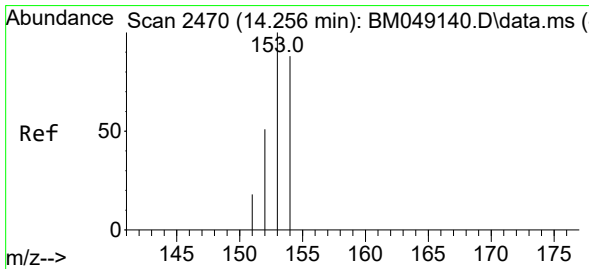
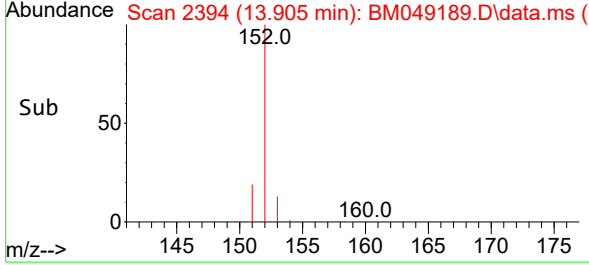
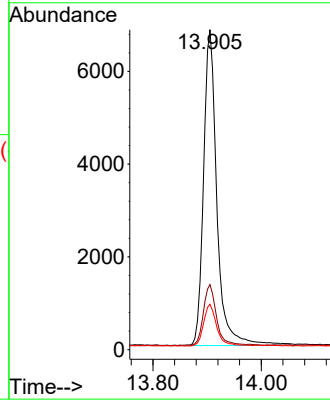
#10  
 Acenaphthylene  
 Concen: 0.269 ng/ul  
 RT: 13.905 min Scan# 21  
 Delta R.T. -0.012 min  
 Lab File: BM049189.D  
 Acq: 24 Dec 2024 17:42

Instrument :  
 BNA\_M  
 ClientSampleId :



Tgt Ion:152 Resp: 11628

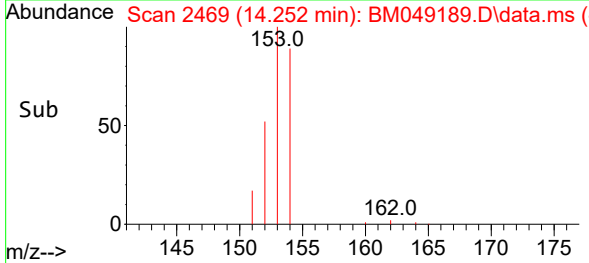
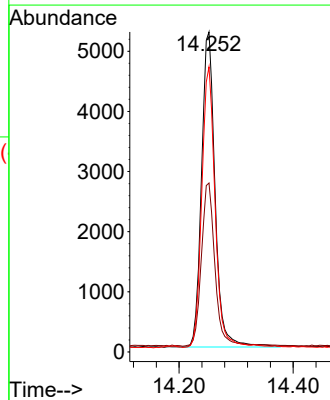
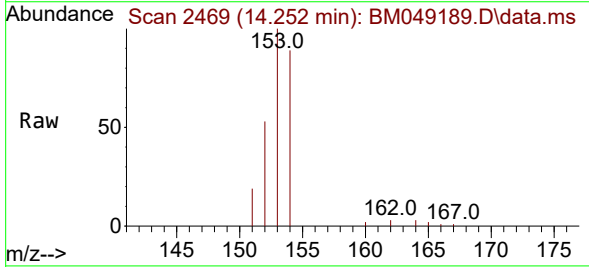
Ion	Ratio	Lower	Upper
152	100		
151	20.4	16.0	24.0
153	14.2	11.0	16.6

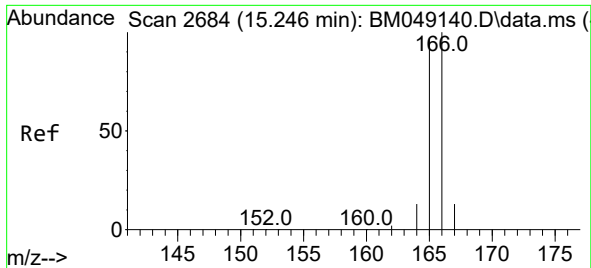


#11  
 Acenaphthene  
 Concen: 0.274 ng/ul  
 RT: 14.252 min Scan# 2469  
 Delta R.T. -0.012 min  
 Lab File: BM049189.D  
 Acq: 24 Dec 2024 17:42

Tgt Ion:153 Resp: 8625

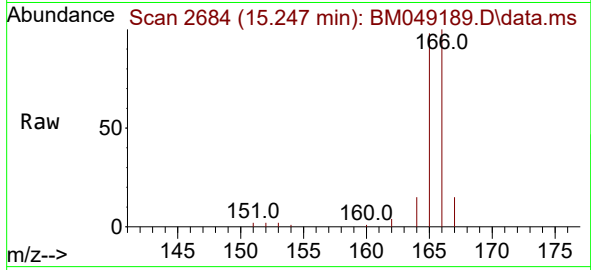
Ion	Ratio	Lower	Upper
153	100		
152	52.8	40.7	61.1
154	89.1	70.8	106.2



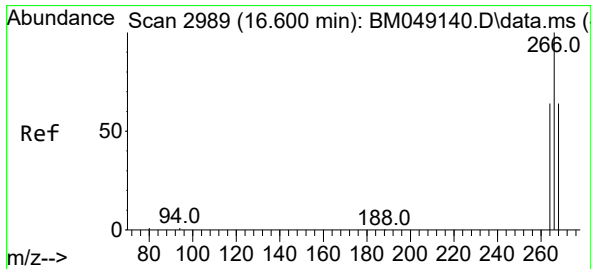
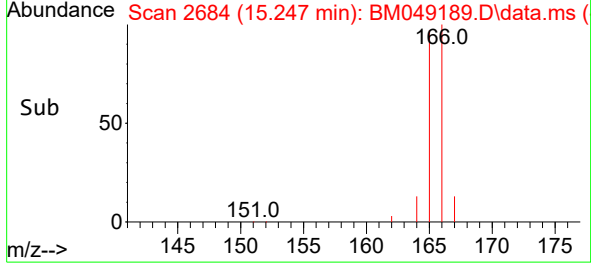
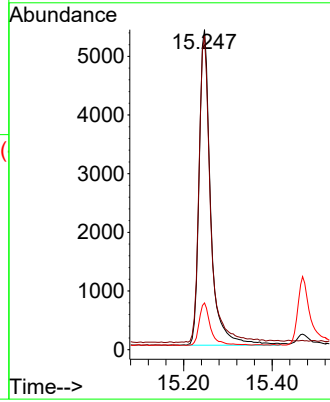


#12  
 Fluorene  
 Concen: 0.275 ng/ul  
 RT: 15.247 min Scan# 20  
 Delta R.T. -0.008 min  
 Lab File: BM049189.D  
 Acq: 24 Dec 2024 17:42

Instrument :  
 BNA\_M  
 ClientSampleId :

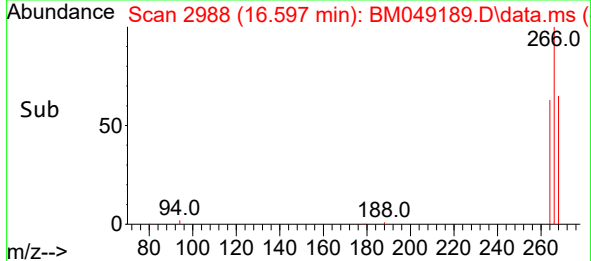
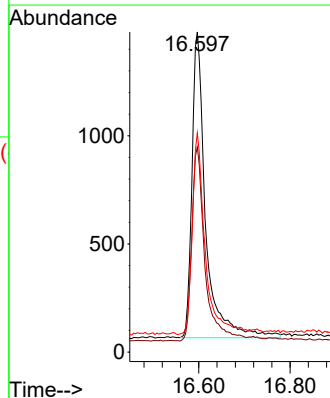
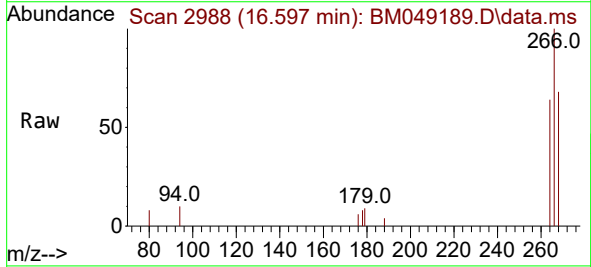


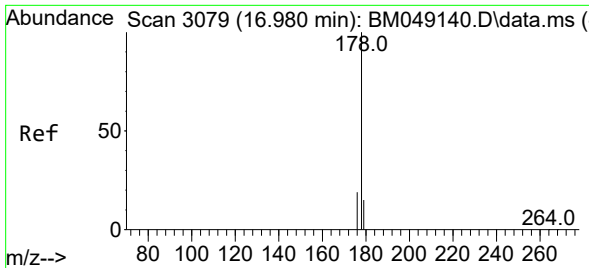
Tgt Ion:166 Resp: 9768  
 Ion Ratio Lower Upper  
 166 100  
 165 98.1 79.7 119.5  
 167 14.6 11.4 17.0



#14  
 Pentachlorophenol  
 Concen: 0.493 ng/ul  
 RT: 16.597 min Scan# 2988  
 Delta R.T. -0.011 min  
 Lab File: BM049189.D  
 Acq: 24 Dec 2024 17:42

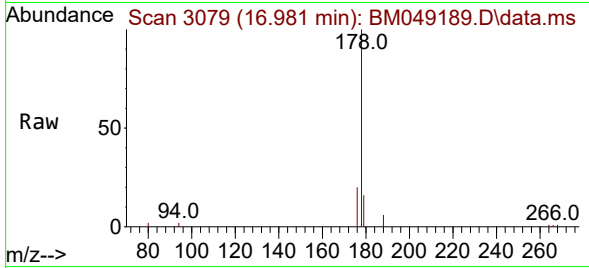
Tgt Ion:266 Resp: 2952  
 Ion Ratio Lower Upper  
 266 100  
 264 62.0 48.3 72.5  
 268 63.6 47.5 71.3



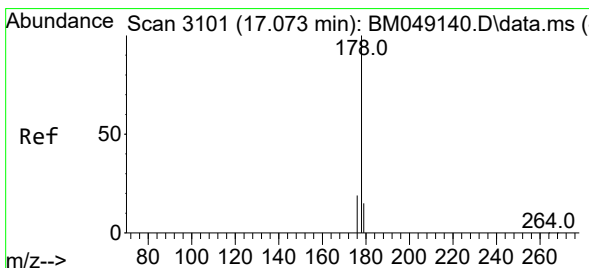
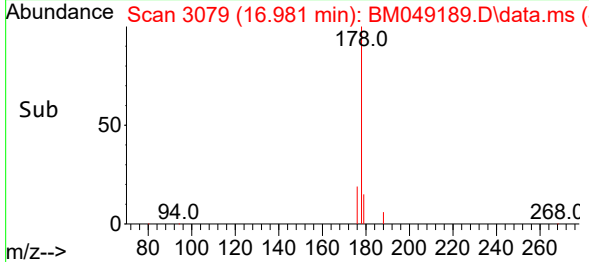
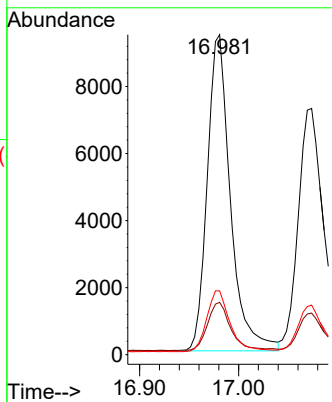


#15  
 Phenanthrene  
 Concen: 0.272 ng/u1  
 RT: 16.981 min Scan# 3079  
 Delta R.T. -0.011 min  
 Lab File: BM049189.D  
 Acq: 24 Dec 2024 17:42

Instrument : BNA\_M  
 ClientSampleId :

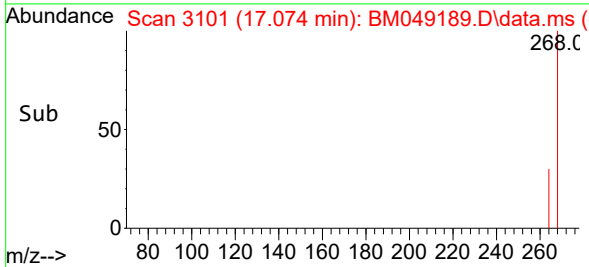
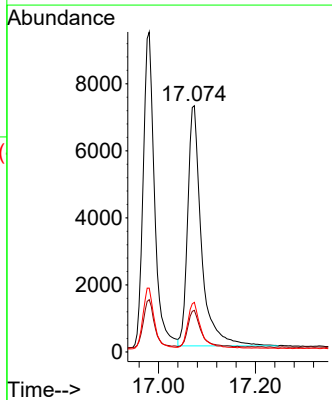
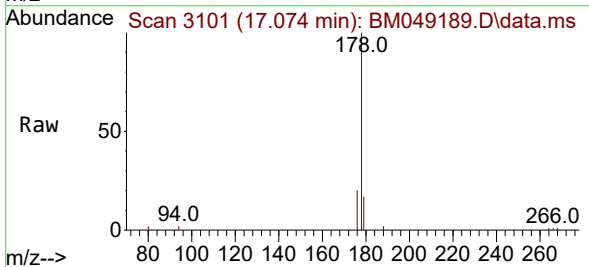


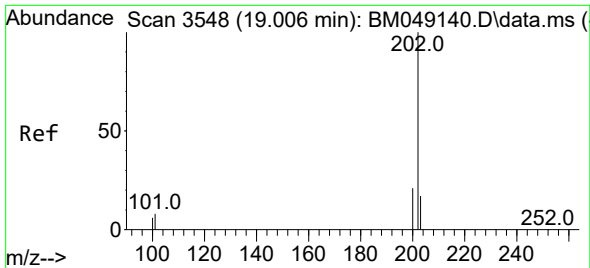
Tgt Ion:178 Resp: 15369  
 Ion Ratio Lower Upper  
 178 100  
 179 16.3 13.0 19.4  
 176 19.9 16.2 24.2



#16  
 Anthracene  
 Concen: 0.272 ng/u1  
 RT: 17.074 min Scan# 3101  
 Delta R.T. -0.011 min  
 Lab File: BM049189.D  
 Acq: 24 Dec 2024 17:42

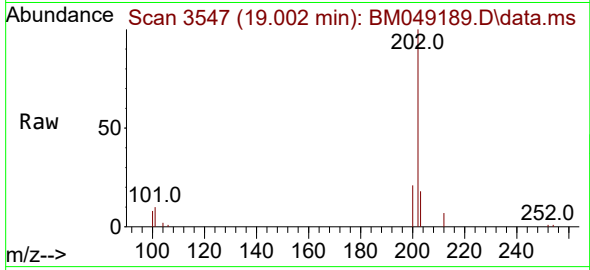
Tgt Ion:178 Resp: 14117  
 Ion Ratio Lower Upper  
 178 100  
 179 16.9 12.9 19.3  
 176 20.1 15.3 22.9



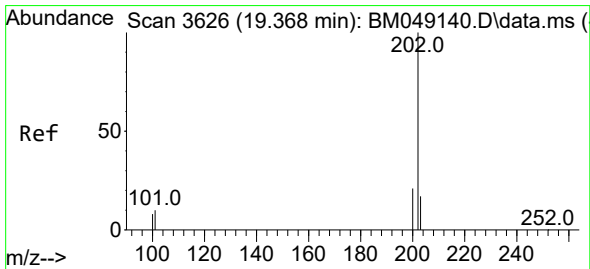
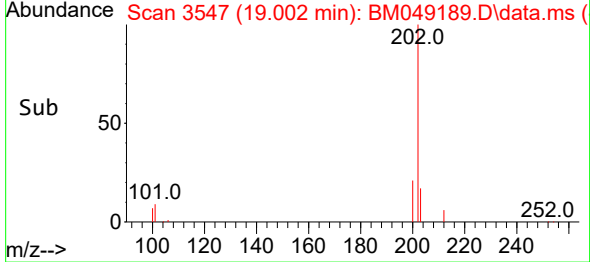
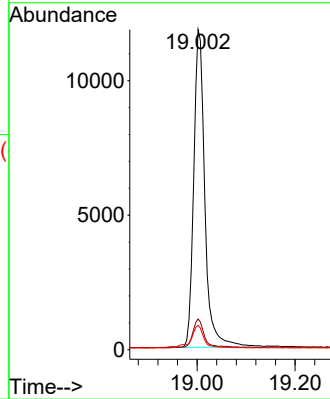


#19  
 Fluoranthene  
 Concen: 0.286 ng/u1  
 RT: 19.002 min Scan# 31  
 Delta R.T. -0.013 min  
 Lab File: BM049189.D  
 Acq: 24 Dec 2024 17:42

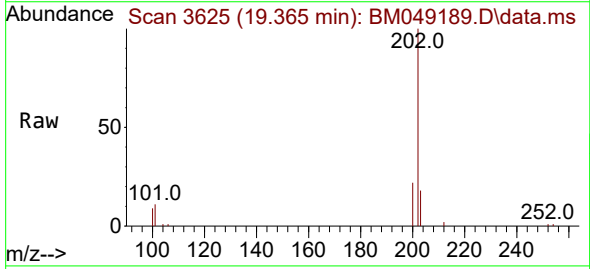
Instrument :  
 BNA\_M  
 ClientSampleId :



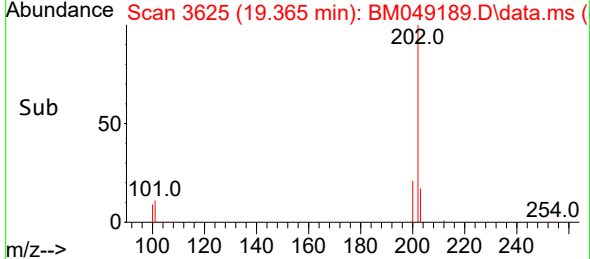
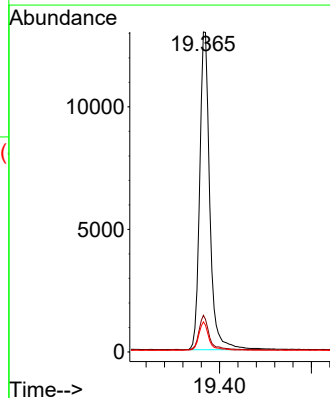
Tgt Ion:202 Resp: 18707  
 Ion Ratio Lower Upper  
 202 100  
 101 9.6 7.6 11.4  
 100 7.6 5.5 8.3



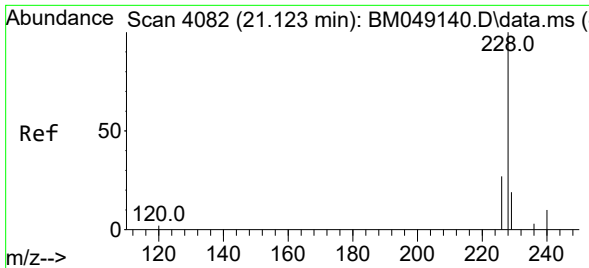
#20  
 Pyrene  
 Concen: 0.284 ng/u1  
 RT: 19.365 min Scan# 3625  
 Delta R.T. -0.013 min  
 Lab File: BM049189.D  
 Acq: 24 Dec 2024 17:42



Tgt Ion:202 Resp: 19806  
 Ion Ratio Lower Upper  
 202 100  
 101 11.4 8.9 13.3  
 100 9.4 6.9 10.3

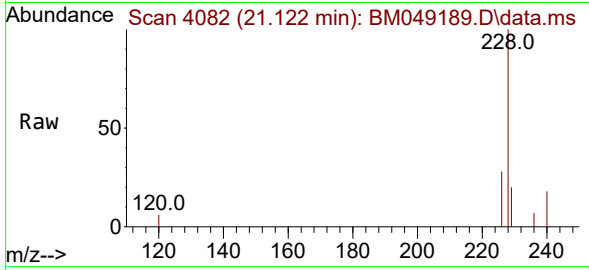




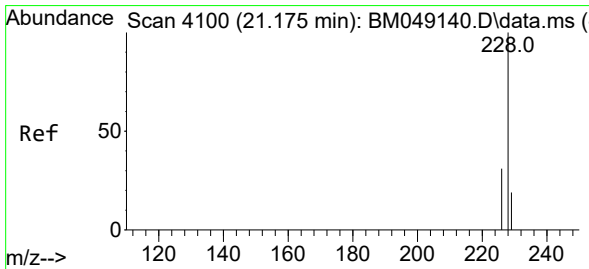
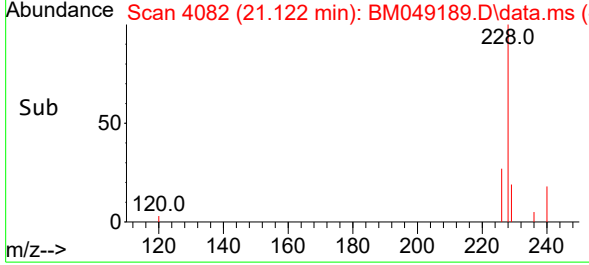
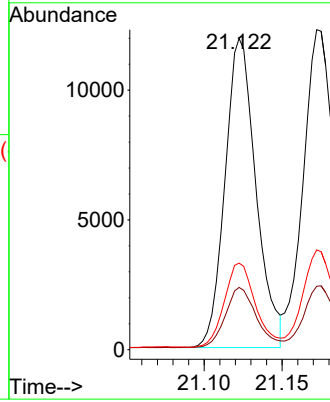


#21  
 Benzo(a)anthracene  
 Concen: 0.262 ng/u1  
 RT: 21.122 min Scan# 4098  
 Delta R.T. -0.009 min  
 Lab File: BM049189.D  
 Acq: 24 Dec 2024 17:42

Instrument :  
 BNA\_M  
 ClientSampleId :

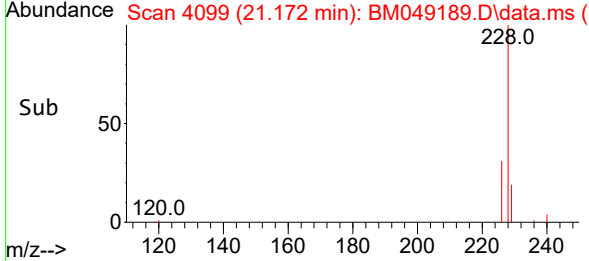
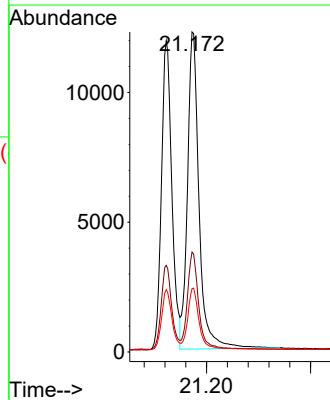
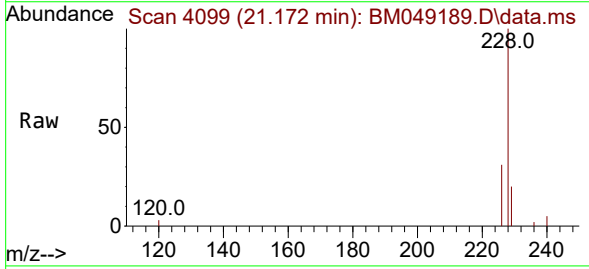


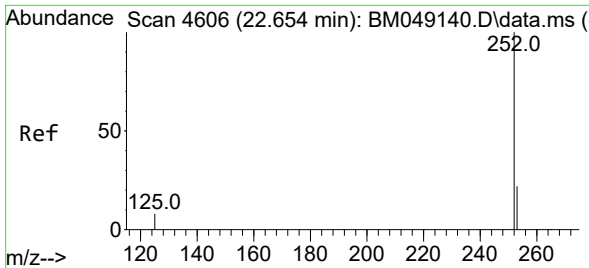
Tgt Ion:228 Resp: 16476  
 Ion Ratio Lower Upper  
 228 100  
 229 20.0 15.9 23.9  
 226 27.8 22.6 34.0



#22  
 Chrysene  
 Concen: 0.279 ng/u1  
 RT: 21.172 min Scan# 4099  
 Delta R.T. -0.012 min  
 Lab File: BM049189.D  
 Acq: 24 Dec 2024 17:42

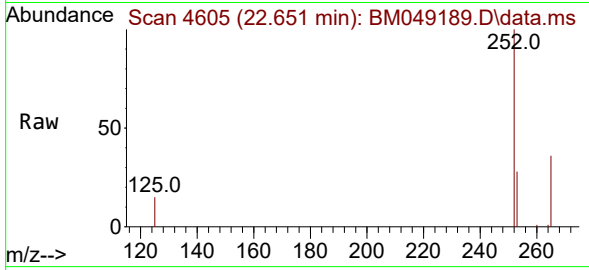
Tgt Ion:228 Resp: 18874  
 Ion Ratio Lower Upper  
 228 100  
 226 31.2 24.1 36.1  
 229 19.8 15.8 23.8



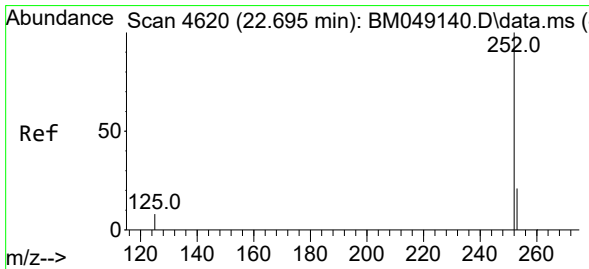
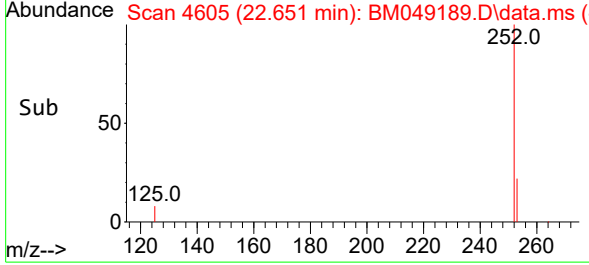
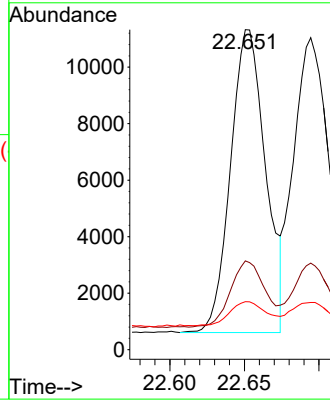


#24  
 Benzo(b)fluoranthene  
 Concen: 0.279 ng/ul  
 RT: 22.651 min Scan# 4605  
 Delta R.T. -0.012 min  
 Lab File: BM049189.D  
 Acq: 24 Dec 2024 17:42

Instrument :  
 BNA\_M  
 ClientSampleId :

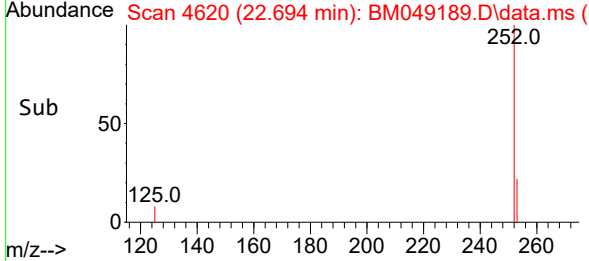
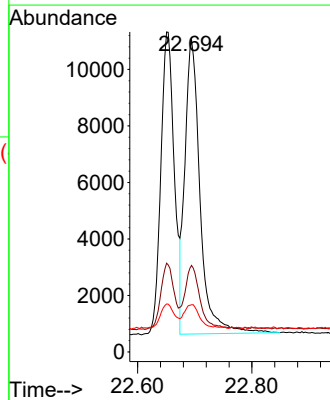
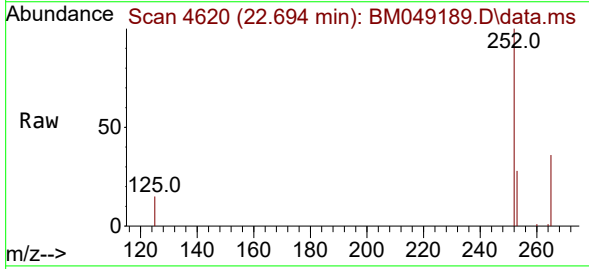


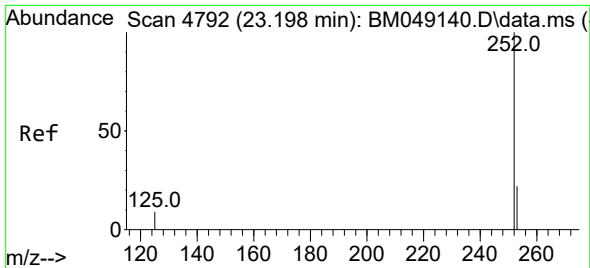
Tgt Ion:252 Resp: 17530  
 Ion Ratio Lower Upper  
 252 100  
 253 27.7 0.0 52.6  
 125 15.0 0.0 30.8



#25  
 Benzo(k)fluoranthene  
 Concen: 0.279 ng/ul  
 RT: 22.694 min Scan# 4620  
 Delta R.T. -0.012 min  
 Lab File: BM049189.D  
 Acq: 24 Dec 2024 17:42

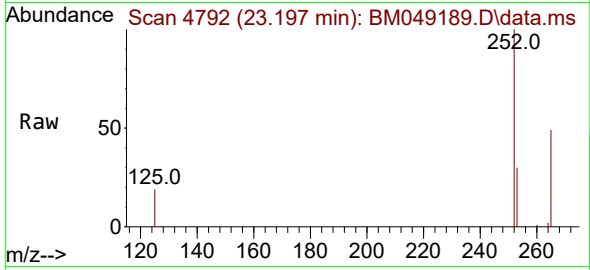
Tgt Ion:252 Resp: 19216  
 Ion Ratio Lower Upper  
 252 100  
 253 27.7 21.3 31.9  
 125 15.1 12.6 18.8



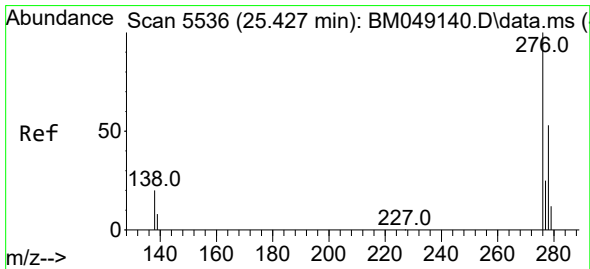
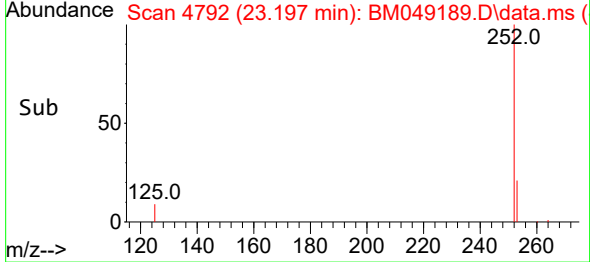
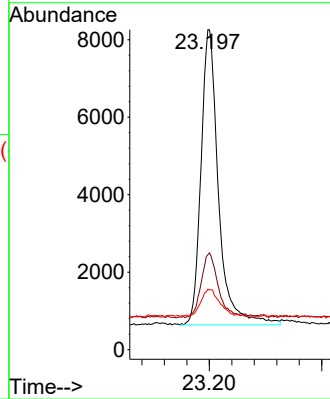


#26  
 Benzo(a)pyrene  
 Concen: 0.274 ng/u1  
 RT: 23.197 min Scan# 41  
 Delta R.T. -0.012 min  
 Lab File: BM049189.D  
 Acq: 24 Dec 2024 17:42

Instrument :  
 BNA\_M  
 ClientSampleId :

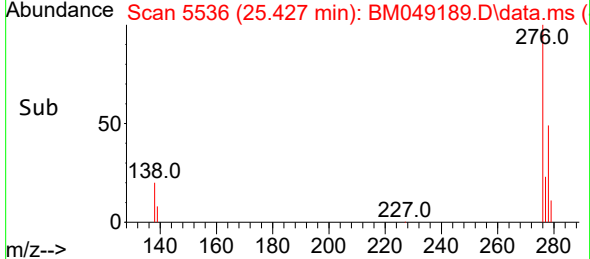
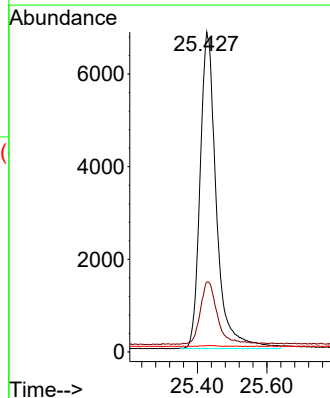
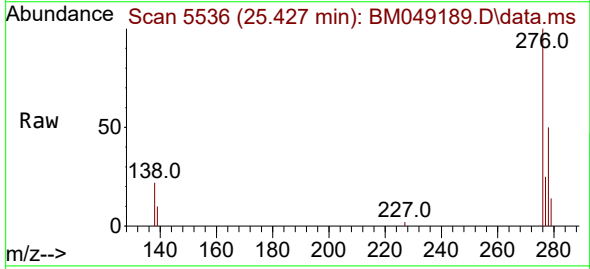


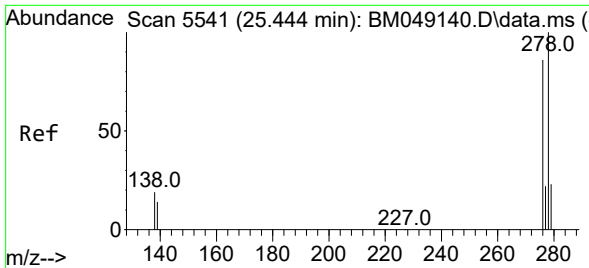
Tgt Ion:252 Resp: 16466  
 Ion Ratio Lower Upper  
 252 100  
 253 29.6 22.4 33.6  
 125 18.9 14.8 22.2



#27  
 Indeno(1,2,3-cd)pyrene  
 Concen: 0.261 ng/u1  
 RT: 25.427 min Scan# 5536  
 Delta R.T. -0.020 min  
 Lab File: BM049189.D  
 Acq: 24 Dec 2024 17:42

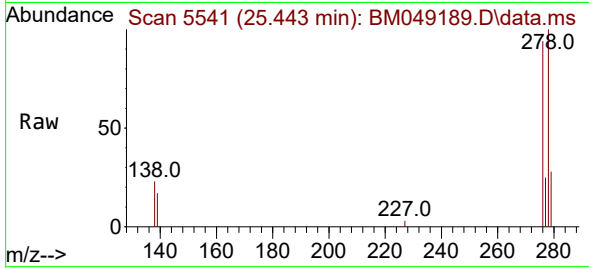
Tgt Ion:276 Resp: 22244  
 Ion Ratio Lower Upper  
 276 100  
 138 19.8 17.4 26.2  
 227 0.2 0.2 0.2#



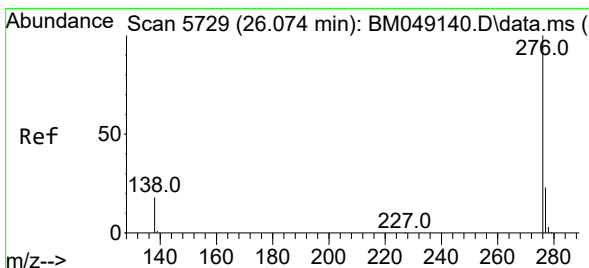
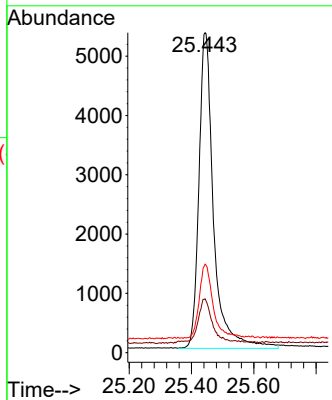
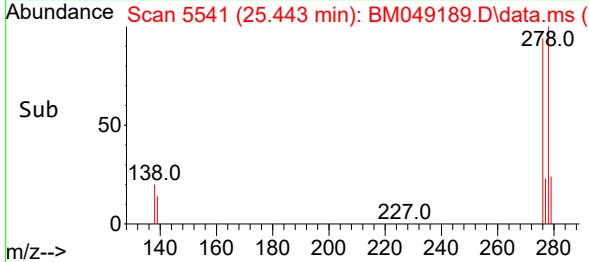


#28  
 Dibenzo(a,h)anthracene  
 Concen: 0.262 ng/ul  
 RT: 25.443 min Scan# 51  
 Delta R.T. -0.024 min  
 Lab File: BM049189.D  
 Acq: 24 Dec 2024 17:42

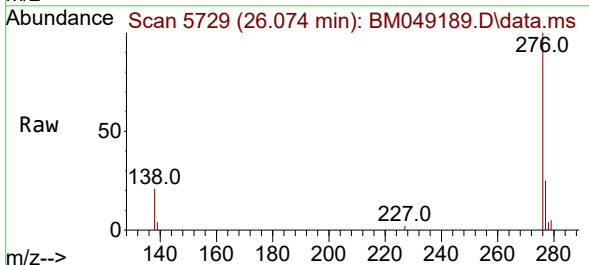
Instrument :  
 BNA\_M  
 ClientSampleId :



Tgt Ion:278 Resp: 17314  
 Ion Ratio Lower Upper  
 278 100  
 139 16.9 13.5 20.3  
 279 27.6 21.5 32.3



#29  
 Benzo(g,h,i)perylene  
 Concen: 0.267 ng/ul  
 RT: 26.074 min Scan# 5729  
 Delta R.T. -0.020 min  
 Lab File: BM049189.D  
 Acq: 24 Dec 2024 17:42



Tgt Ion:276 Resp: 18285  
 Ion Ratio Lower Upper  
 276 100  
 138 21.1 16.7 25.1  
 277 25.1 19.9 29.9

