

Data Path : Z:\HPCHEM1\BNA M\DATA\BM122416\
 Data File : BM008660.D
 Acq On : 25 Dec 2016 08:24
 Operator : UM/SJ
 Sample : H6040-04DL 10X
 Misc :
 ALS Vial : 74 Sample Multiplier: 1

Instrument :
 BNA_M
ClientSampleId :
 DA8T9DL

Manual Integrations
APPROVED
 sohil
 12/26/2016 6:28:28 PM

Quant Time: Dec 26 16:04:07 2016
 Quant Method : Z:\HPCHEM1\BNA M\METHODS\SOM-EPA-SIM-BM121916.M
 Quant Title : ASP BNA STANDARDS FOR 5 POINT CALIBRATION
 QLast Update : Mon Dec 26 03:21:10 2016
 Response via : Initial Calibration

| Internal Standards | R.T. | QIon | Response | Conc | Units | Dev(Min) |
|------------------------------------|-------|------|----------|------|--------|---------------|
| 1) 1,4-Dichlorobenzene-d4 | 7.67 | 152 | 423 | 0.40 | ng/ul | -0.11 |
| 2) Naphthalene-d8 | 10.42 | 136 | 1353 | 0.40 | ng/ul | -0.10 |
| 6) Acenaphthene-d10 | 14.28 | 164 | 1018m | 0.40 | ng/ul | -0.05 |
| 10) Phenanthrene-d10 | 17.04 | 188 | 2125m | 0.40 | ng/ul | -0.05 |
| 16) Chrysene-d12 | 21.25 | 240 | 1490 | 0.40 | ng/ul | -0.02 |
| 20) Perylene-d12 | 23.47 | 264 | 1686 | 0.40 | ng/ul | -0.03 |
| System Monitoring Compounds | | | | | | |
| 4) 2-Methylnaphthalene-d10 | 12.01 | 152 | 97 | 0.05 | ng/ul | -0.11 |
| 14) Fluoranthene-d10 | 19.07 | 212 | 531m | 0.09 | ng/ul | -0.04 |
| Target Compounds | | | | | | |
| | | | | | | Ovalue |
| 3) Naphthalene | 10.46 | 128 | 15753 | 4.14 | ng/ul | 95 |
| 5) 2-Methylnaphthalene | 12.08 | 142 | 21963 | 8.57 | ng/ul | 99 |
| 7) Acenaphthylene | 14.00 | 152 | 870 | 0.19 | ng/ul# | 8 |
| 8) Acenaphthene | 14.33 | 153 | 2814 | 0.81 | ng/ul | 90 |
| 9) Fluorene | 15.34 | 166 | 14219 | 3.60 | ng/ul | 99 |
| 12) Phenanthrene | 17.07 | 178 | 14971 | 2.31 | ng/ul# | 94 |
| 13) Anthracene | 17.16 | 178 | 4424m | 0.70 | ng/ul | |
| 15) Fluoranthene | 19.11 | 202 | 4212m | 0.53 | ng/ul | |
| 17) Pyrene | 19.47 | 202 | 5966 | 1.04 | ng/ul# | 91 |

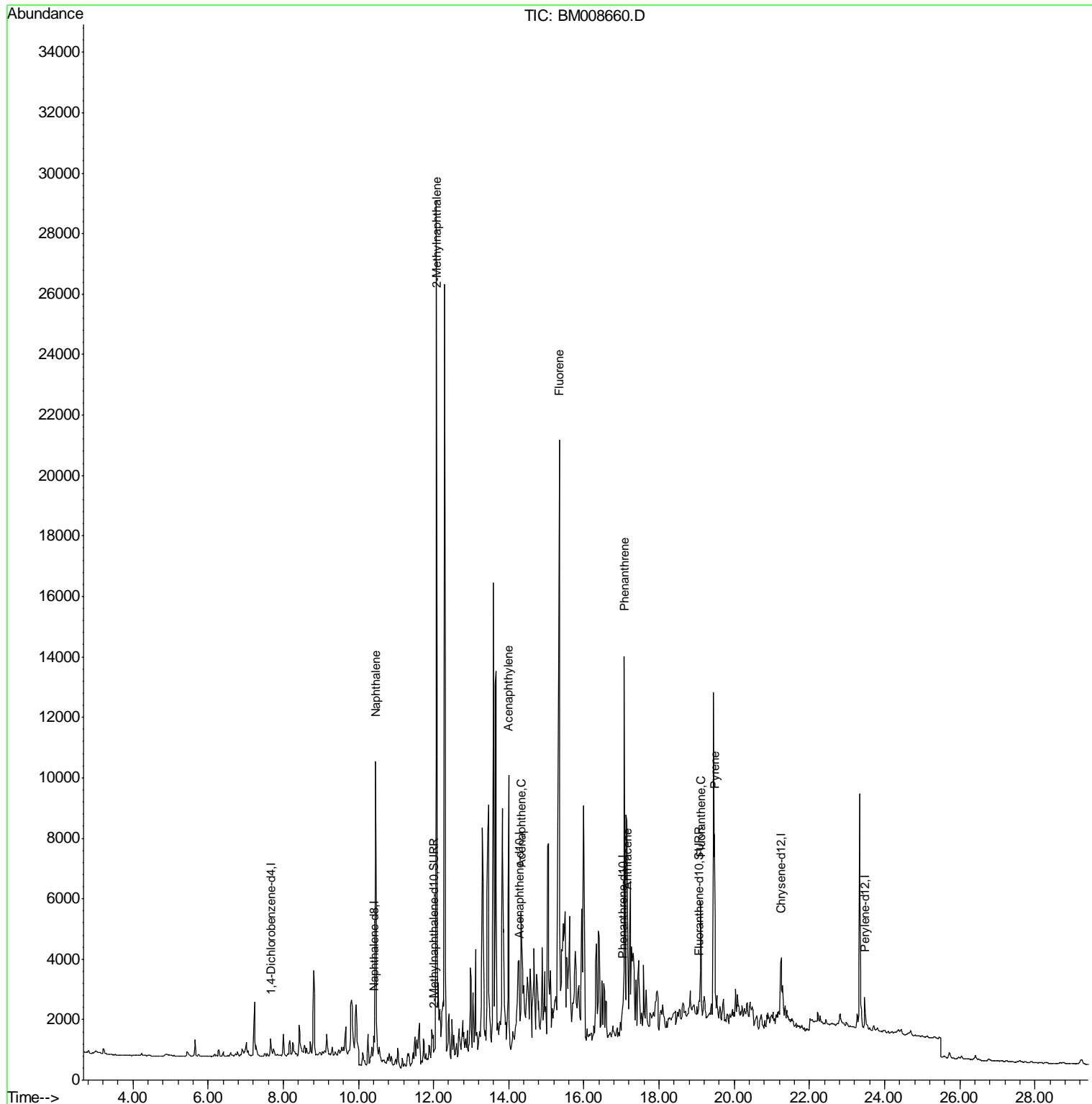
(#) = qualifier out of range (m) = manual integration (+) = signals summed

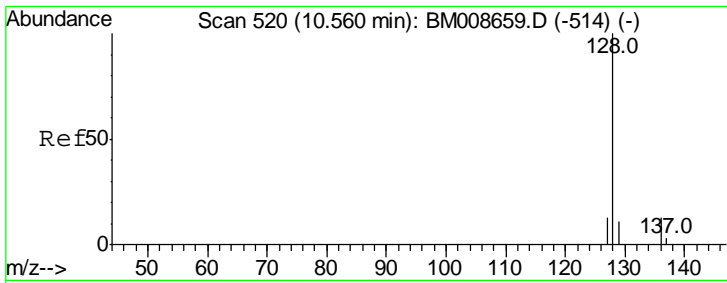
Data Path : Z:\HPCHEM1\BNA M\DATA\BM122416\
 Data File : BM008660.D
 Acq On : 25 Dec 2016 08:24
 Operator : UM/SJ
 Sample : H6040-04DL 10X
 Misc :
 ALS Vial : 74 Sample Multiplier: 1

Instrument :
 BNA_M
ClientSampled :
 DA8T9DL

Manual Integrations
APPROVED
 sohil
 12/26/2016 6:28:28 PM

Quant Time: Dec 26 16:04:07 2016
 Quant Method : Z:\HPCHEM1\BNA M\METHODS\SOM-EPA-SIM-BM121916.M
 Quant Title : ASP BNA STANDARDS FOR 5 POINT CALIBRATION
 QLast Update : Mon Dec 26 03:21:10 2016
 Response via : Initial Calibration





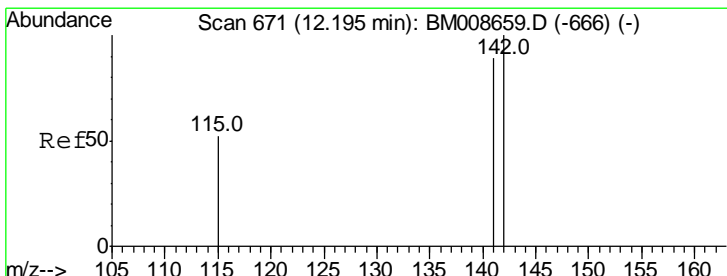
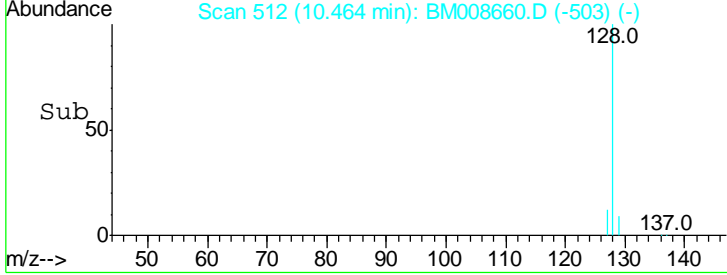
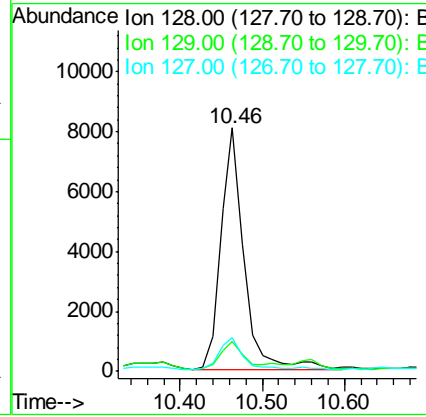
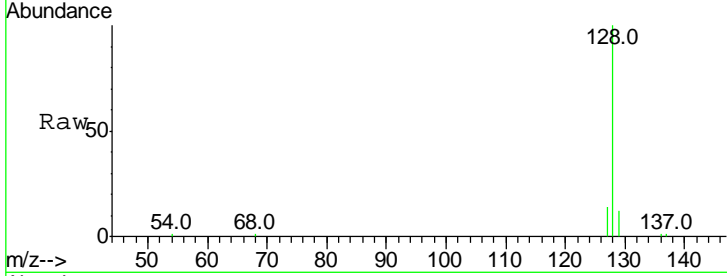
#3
 Naphthalene
 Concen: 4.14 ng/ul
 RT: 10.46 min Scan# 512
 Delta R.T. -0.10 min
 Lab File: BM008660.D
 Acq: 25 Dec 2016 08:24

Instrument :
 BNA_M
ClientSampled :
 DA8T9DL

Tgt Ion:128 Resp: 15753

| Ion | Ratio | Lower | Upper |
|-----|-------|-------|-------|
| 128 | 100 | | |
| 129 | 12.4 | 11.3 | 16.9 |
| 127 | 13.6 | 12.8 | 19.2 |

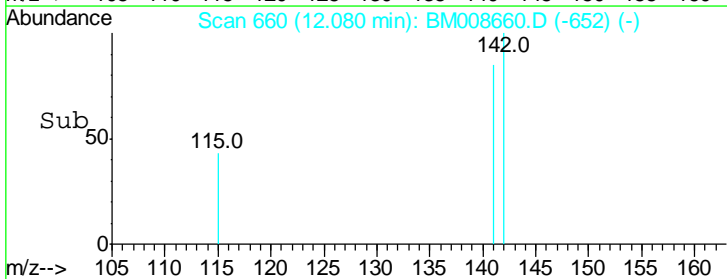
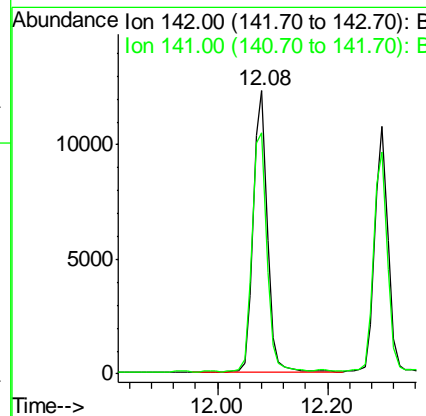
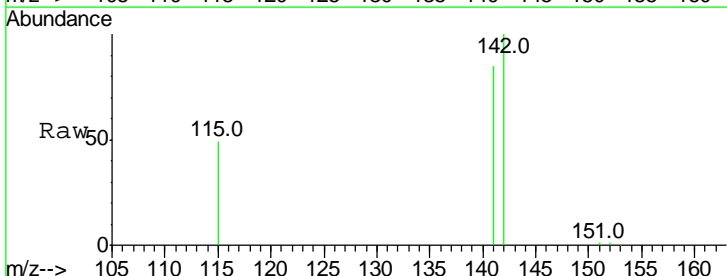
Manual Integrations
APPROVED
 sohil
 12/26/2016 6:28:28 PM

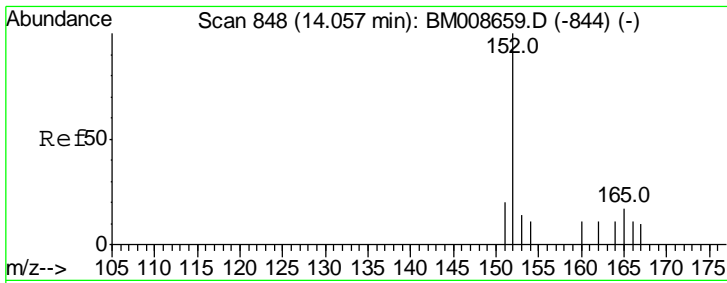


#5
 2-Methylnaphthalene
 Concen: 8.57 ng/ul
 RT: 12.08 min Scan# 660
 Delta R.T. -0.11 min
 Lab File: BM008660.D
 Acq: 25 Dec 2016 08:24

Tgt Ion:142 Resp: 21963

| Ion | Ratio | Lower | Upper |
|-----|-------|-------|-------|
| 142 | 100 | | |
| 141 | 89.6 | 72.6 | 108.8 |





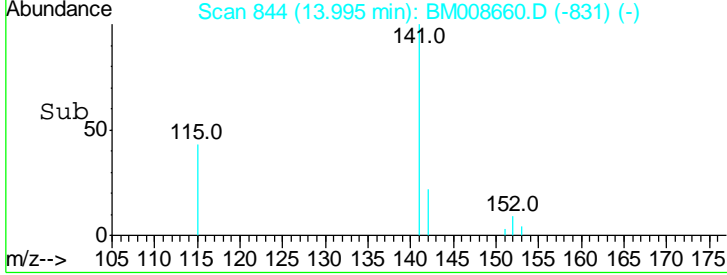
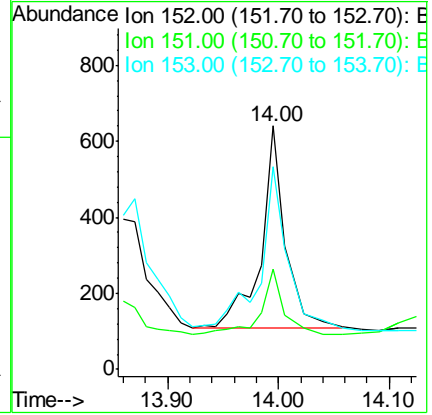
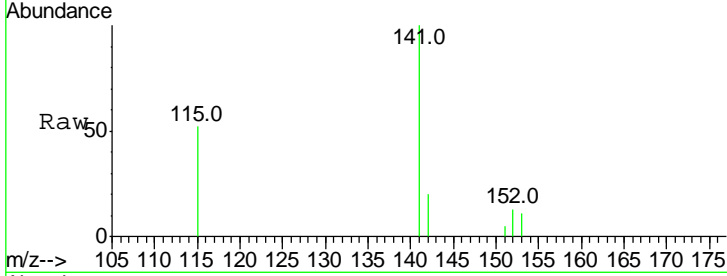
#7
 Acenaphthylene
 Concen: 0.19 ng/ul
 RT: 14.00 min Scan# 844
 Delta R.T. -0.06 min
 Lab File: BM008660.D
 Acq: 25 Dec 2016 08:24

Instrument :
 BNA_M
ClientSampled :
 DA8T9DL

| Tgt Ion | Ratio | Lower | Upper |
|---------|-------|-------|-------|
| 152 | 100 | | |
| 151 | 41.2 | 17.1 | 25.7# |
| 153 | 83.2 | 12.8 | 19.2# |

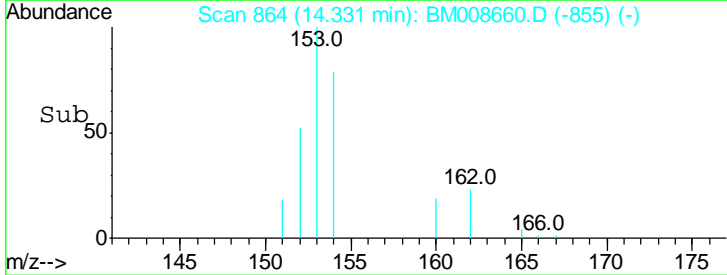
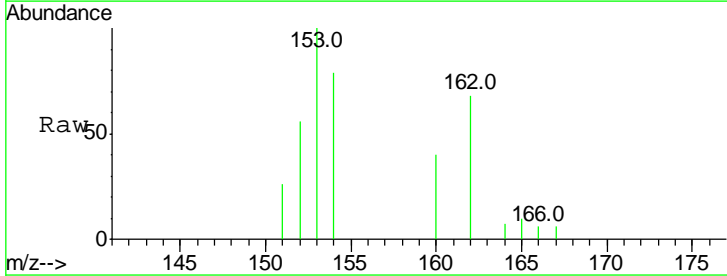
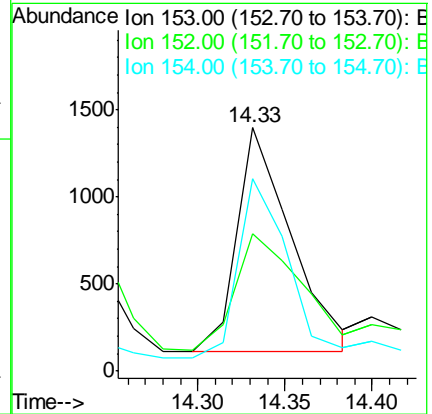
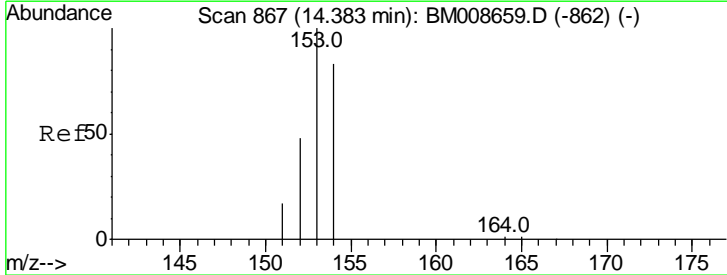
Manual Integrations
APPROVED

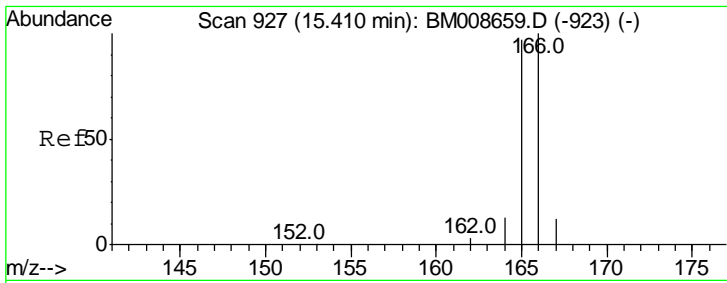
sohil
 12/26/2016 6:28:28 PM



#8
 Acenaphthene
 Concen: 0.81 ng/ul
 RT: 14.33 min Scan# 864
 Delta R.T. -0.05 min
 Lab File: BM008660.D
 Acq: 25 Dec 2016 08:24

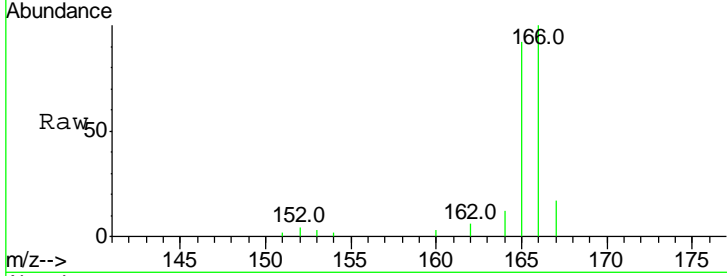
| Tgt Ion | Ratio | Lower | Upper |
|---------|-------|-------|-------|
| 153 | 100 | | |
| 152 | 56.4 | 40.3 | 60.5 |
| 154 | 79.0 | 71.4 | 107.2 |





#9
 Fluorene
 Concen: 3.60 ng/ul
 RT: 15.34 min Scan# 923
 Delta R.T. -0.07 min
 Lab File: BM008660.D
 Acq: 25 Dec 2016 08:24

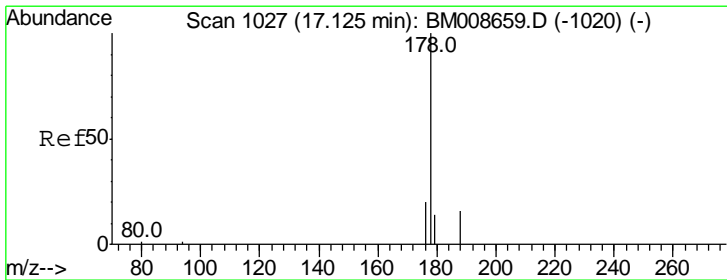
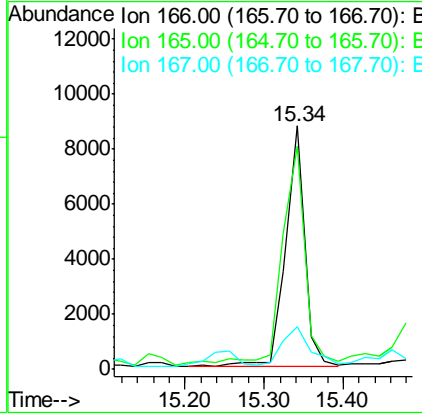
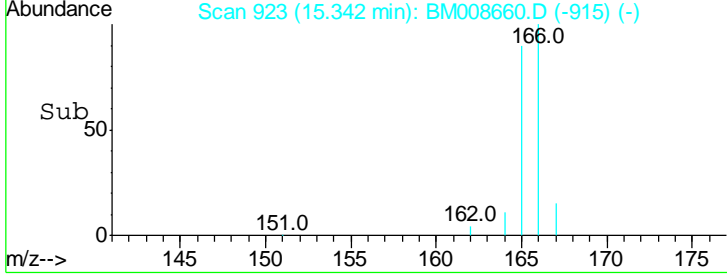
Instrument :
 BNA_M
ClientSampled :
 DA8T9DL



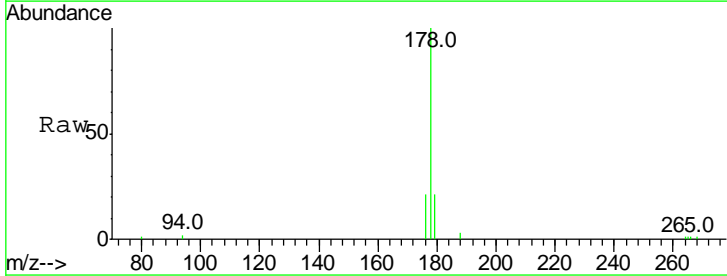
Tgt Ion: 166 Resp: 14219

| Ion | Ratio | Lower | Upper |
|-----|-------|-------|-------|
| 166 | 100 | | |
| 165 | 91.6 | 73.4 | 110.2 |
| 167 | 17.4 | 14.6 | 22.0 |

Manual Integrations
APPROVED
 sohil
 12/26/2016 6:28:28 PM

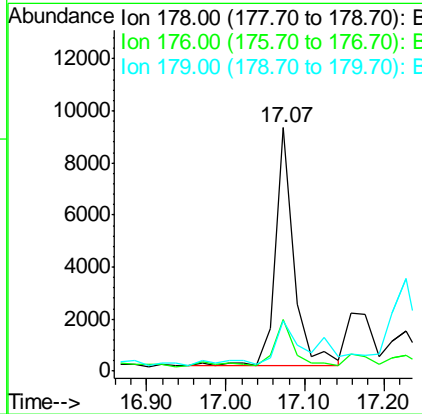
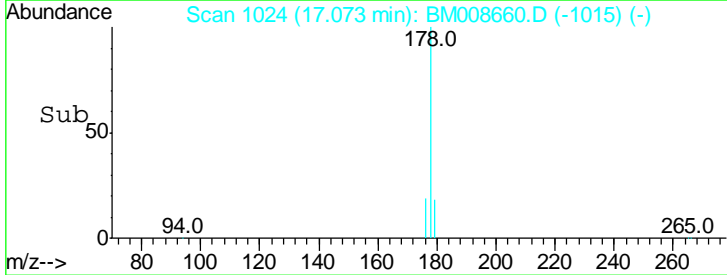


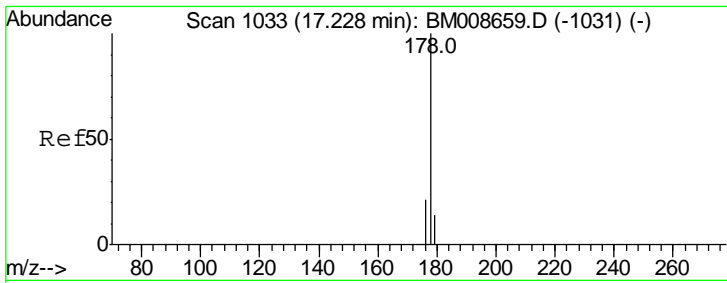
#12
 Phenanthrene
 Concen: 2.31 ng/ul
 RT: 17.07 min Scan# 1024
 Delta R.T. -0.05 min
 Lab File: BM008660.D
 Acq: 25 Dec 2016 08:24



Tgt Ion: 178 Resp: 14971

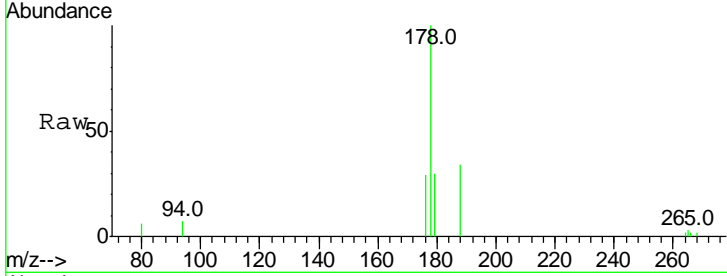
| Ion | Ratio | Lower | Upper |
|-----|-------|-------|-------|
| 178 | 100 | | |
| 176 | 21.3 | 18.4 | 27.6 |
| 179 | 20.8 | 13.6 | 20.4 |





#13
 Anthracene
 Concen: 0.70 ng/ul m
 RT: 17.16 min Scan# 1029
 Delta R.T. -0.07 min
 Lab File: BM008660.D
 Acq: 25 Dec 2016 08:24

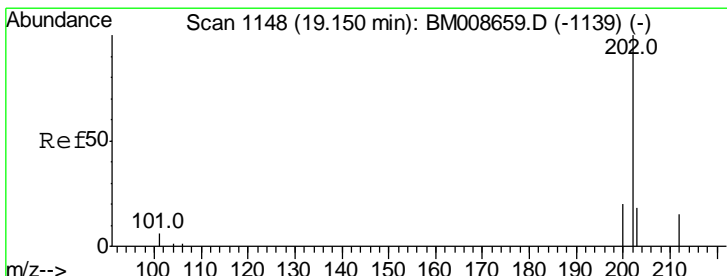
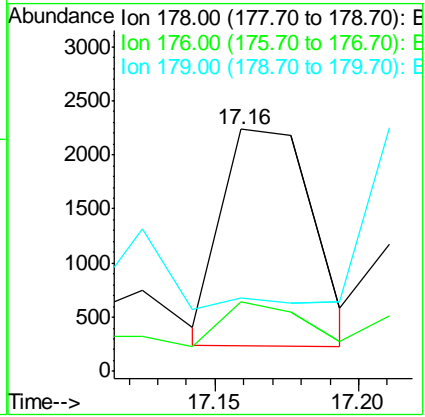
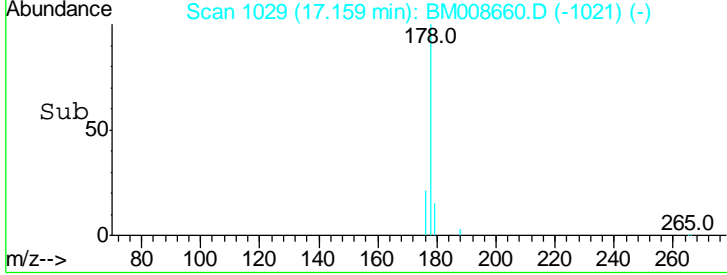
Instrument :
 BNA_M
 ClientSampled :
 DA8T9DL



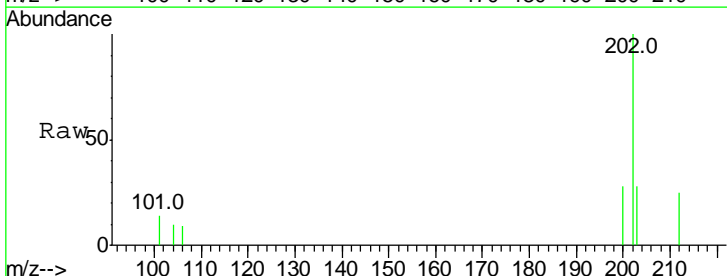
Tgt Ion: 178 Resp: 4424

| Ion | Ratio | Lower | Upper |
|-----|-------|-------|-------|
| 178 | 100 | | |
| 176 | 29.0 | 18.1 | 27.1# |
| 179 | 30.4 | 14.7 | 22.1# |

Manual Integrations
 APPROVED
 sohil
 12/26/2016 6:28:28 PM

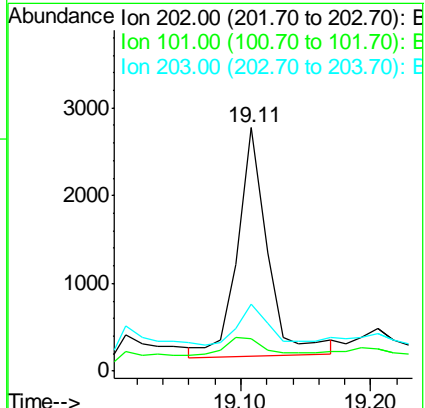
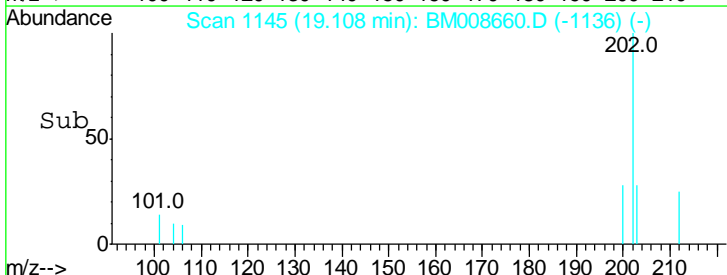


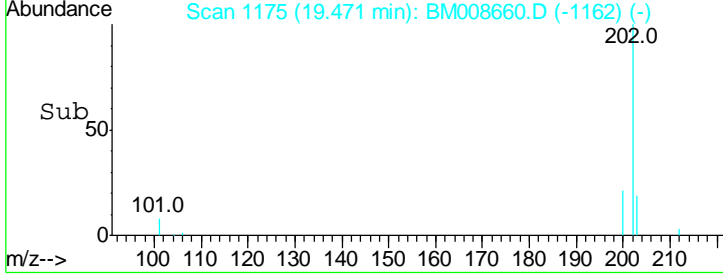
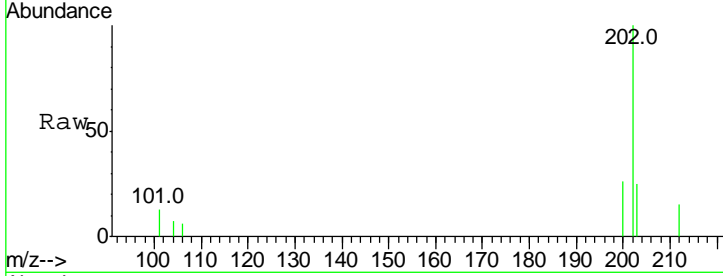
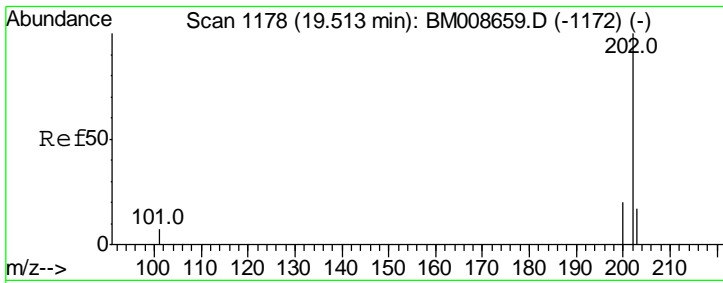
#15
 Fluoranthene
 Concen: 0.53 ng/ul m
 RT: 19.11 min Scan# 1145
 Delta R.T. -0.04 min
 Lab File: BM008660.D
 Acq: 25 Dec 2016 08:24



Tgt Ion: 202 Resp: 4212

| Ion | Ratio | Lower | Upper |
|-----|-------|-------|-------|
| 202 | 100 | | |
| 101 | 13.5 | 0.0 | 30.3 |
| 203 | 27.6 | 0.0 | 39.5 |





#17
 Pyrene
 Concen: 1.04 ng/ul
 RT: 19.47 min Scan# 1175
 Delta R.T. -0.04 min
 Lab File: BM008660.D
 Acq: 25 Dec 2016 08:24

| Tot Ion | Ratio | Lower | Upper |
|---------|-------|-------|-------|
| 202 | 100 | | |
| 200 | 26.2 | 18.2 | 27.4 |
| 203 | 25.0 | 15.6 | 23.4 |

Instrument :
 BNA_M
ClientSampled :
 DA8T9DL

Manual Integrations
APPROVED
 sohil
 12/26/2016 6:28:28 PM

