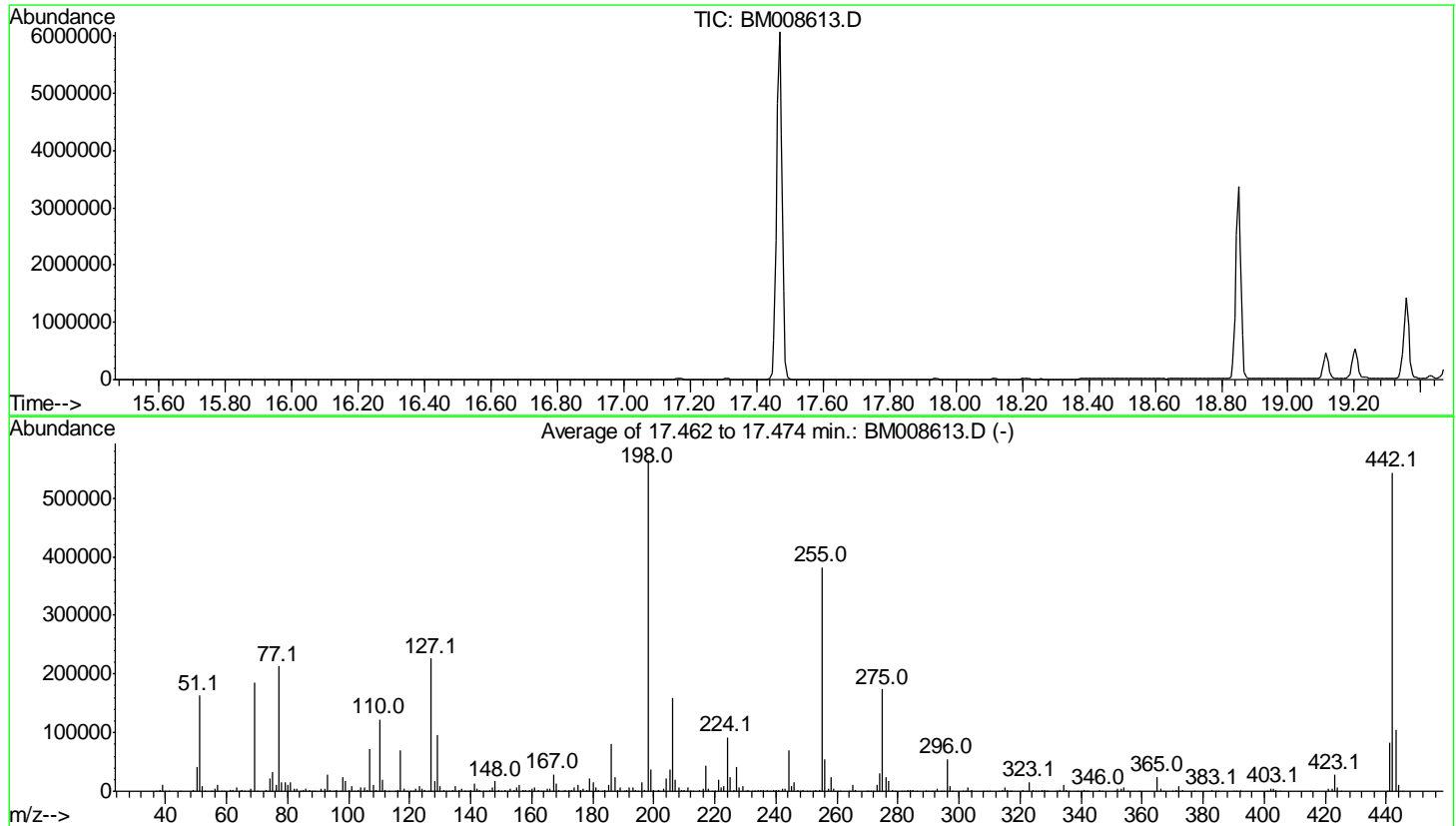


Data Path : Z:\HPCHEM1\BNA M\DATA\BM122416\  
 Data File : BM008613.D  
 Acq On : 24 Dec 2016 02:15  
 Operator : UM/SJ  
 Sample : DFTPP46  
 Misc :  
 ALS Vial : 1 Sample Multiplier: 1

Instrument :  
 BNA\_M  
 ClientSampleId :  
 DFTPP46

Integration File: RTEINT.P

Method : Z:\HPCHEM1\BNA\_M\METHODS\SOM-EPA-SIM-BM121916.M  
 Title : ASP BNA STANDARDS FOR 5 POINT CALIBRATION  
 Last Update : Mon Dec 26 15:39:34 2016



AutoFind: Scans 2529, 2530, 2531; Background Corrected with Scan 2522

Target Mass	Rel. to Mass	Lower Limit%	Upper Limit%	Rel. Abn%	Raw Abn	Result Pass/Fail
51	198	10	80	28.9	163024	PASS
68	69	0.00	2	1.9	3460	PASS
69	198	0.00	100	33.0	186344	PASS
70	69	0.00	2	0.6	1035	PASS
127	198	10	80	40.1	226368	PASS
197	198	0.00	2	0.4	2221	PASS
198	198	100	100	100.0	564992	PASS
199	198	5	9	6.7	38066	PASS
275	198	10	60	30.7	173717	PASS
365	198	1	100	4.3	24482	PASS
441	443	0.01	100	79.2	82536	PASS
442	198	50	100	96.3	543893	PASS
443	442	15	24	19.2	104253	PASS

m/z	Abundance
39.10	381.0
40.00	804.0
41.10	451.0
44.00	988.0
65.90	331.0
69.10	344.0
73.10	554.0
190.90	328.0
192.90	425.0
207.00	1165.0
208.00	304.0
209.10	363.0
281.10	516.0

**Instrument :**  
BNA\_M  
**ClientSampleId :**  
DFTPP46

m/z	Abundance
37.20	904.0
38.00	2305.0
39.10	12855.0
40.10	1396.0
41.00	686.0
44.00	1002.0
49.10	1640.0
50.10	47848.0
51.10	182016.0
52.10	9504.0
53.00	432.0
55.00	1216.0
56.10	5770.0
57.10	12695.0
58.00	384.0
61.00	2236.0
62.10	2407.0
63.10	8421.0
64.10	1343.0
65.10	3044.0
66.00	510.0
67.10	348.0
68.10	4393.0
69.00	202304.0
70.10	911.0
73.00	2359.0
74.10	23432.0
75.10	34616.0
76.10	12089.0
77.10	230144.0
78.10	16536.0
79.00	17136.0
80.00	12459.0
81.00	17456.0
82.10	4540.0
83.00	4199.0
84.00	420.0
85.10	3047.0
86.10	5099.0
87.10	2232.0
88.00	838.0
89.00	407.0
91.00	4316.0
92.00	5002.0
93.10	30448.0
94.00	2203.0
95.00	474.0
96.00	1286.0
97.10	359.0
98.00	24672.0
99.00	18984.0
100.10	1785.0
101.00	9800.0
102.00	719.0
103.00	3549.0
104.00	6934.0
105.00	5748.0
106.10	1715.0
107.00	74584.0
108.10	10691.0
109.10	2253.0
110.00	127632.0
111.00	21840.0
112.00	2654.0
113.00	731.0
116.00	4135.0
117.00	71760.0
118.00	5572.0
119.10	501.0
120.10	876.0
120.90	315.0
122.00	5174.0
123.00	7934.0
124.00	4002.0
125.00	3218.0
126.20	1330.0
127.10	233536.0
128.00	18496.0
129.00	99784.0
130.00	9269.0
131.10	1790.0
132.00	725.0
132.80	600.0
134.00	2861.0
135.00	8677.0
136.00	2982.0
137.10	4380.0
137.80	639.0
138.10	624.0
139.10	533.0
140.10	1463.0
141.00	13597.0

Instrument :  
BNA\_M  
ClientSampleId :  
DFTPP46

142.00	4473.0
143.00	2942.0
144.10	775.0
145.10	528.0
146.10	2348.0
147.00	7316.0
148.00	16560.0
149.00	3202.0
150.00	1104.0
151.10	1584.0
153.00	3806.0
154.00	2505.0
155.10	7614.0
156.10	11919.0
157.00	2224.0
158.00	3000.0
159.00	2130.0
160.00	4353.0
161.10	6050.0
162.00	1631.0
163.10	445.0
164.10	502.0
165.00	5069.0
166.10	5317.0
167.00	28440.0
168.00	13777.0
169.00	2140.0
170.00	1153.0
171.00	1332.0
172.00	2734.0
173.00	3279.0
174.00	6298.0
175.10	10549.0
176.10	3302.0
177.00	5332.0
178.00	2300.0
179.00	22360.0
180.00	15465.0
181.00	7155.0
182.00	1278.0
182.90	807.0
184.00	1487.0
185.10	9436.0
186.10	79088.0
187.10	22664.0
188.00	2611.0
189.00	5622.0
190.00	1045.0
191.00	2291.0
192.00	6508.0
193.10	7515.0
194.00	1827.0
195.00	977.0
196.00	15155.0
197.00	2960.0
198.00	543872.0
199.00	38376.0
200.00	3267.0
201.50	2509.0
203.00	4239.0
204.10	21000.0
205.10	36528.0
206.10	150976.0
207.10	20280.0
208.00	5703.0
209.10	2127.0
210.00	2565.0
211.10	6244.0
212.10	1258.0
213.00	549.0
215.00	2042.0
216.10	3530.0
217.00	44152.0
218.00	5115.0
219.10	495.0
219.90	684.0
221.00	19864.0
222.00	4981.0
223.00	9656.0
224.10	85416.0
225.10	22872.0
226.10	2479.0
227.00	39968.0
228.00	5219.0
229.00	7690.0
229.90	995.0
231.00	2699.0
231.90	414.0
232.90	796.0
234.10	2747.0
235.00	2766.0
236.00	1451.0
237.00	3141.0
238.20	492.0
239.00	2058.0
240.10	1195.0

Instrument :  
BNA\_M  
ClientSampleId :  
DFTPP46

241.00	2190.0
242.00	4874.0
243.10	4327.0
244.10	65016.0
245.00	8755.0
246.00	12919.0
247.00	3335.0
248.00	800.0
249.00	1953.0
250.00	890.0
250.90	697.0
251.90	645.0
253.00	1827.0
254.10	2508.0
255.00	350080.0
256.00	49952.0
257.10	4117.0
258.00	21792.0
259.00	3366.0
260.00	556.0
261.00	688.0
264.00	514.0
265.00	9153.0
266.00	1101.0
269.90	458.0
271.10	920.0
272.00	1027.0
273.00	11053.0
274.00	26200.0
275.00	152064.0
276.00	22040.0
277.00	16055.0
278.10	2516.0
279.10	379.0
281.00	998.0
281.90	395.0
283.10	1529.0
284.10	1527.0
285.10	2176.0
286.00	588.0
288.90	685.0
290.00	530.0
291.10	460.0
292.00	862.0
293.00	3092.0
294.00	576.0
295.10	970.0
296.00	47008.0
297.10	7621.0
297.90	368.0
301.10	782.0
302.10	934.0
303.00	5673.0
303.90	1232.0
308.00	589.0
309.90	498.0
313.00	353.0
314.10	2148.0
315.00	5044.0
316.00	2894.0
316.90	486.0
320.90	1431.0
321.90	673.0
323.10	14542.0
324.00	2234.0
327.00	2938.0
328.10	1581.0
331.90	797.0
333.00	1228.0
334.10	9363.0
335.10	2463.0
335.90	308.0
341.00	1596.0
341.90	552.0
346.00	2755.0
346.90	709.0
352.00	4047.0
353.00	2916.0
354.10	4434.0
355.10	922.0
359.00	517.0
365.00	20192.0
366.00	2857.0
366.90	368.0
370.10	402.0
371.00	1169.0
372.10	7377.0
373.00	1906.0
377.00	335.0
383.00	2123.0
383.90	493.0
390.00	927.0
391.00	774.0
391.90	643.0
401.10	389.0
402.00	2569.0

Instrument :  
BNA\_M  
ClientSampleId :  
DFTPP46

403. 10	4039. 0
404. 00	1357. 0
415. 00	313. 0
421. 10	2745. 0
422. 10	2982. 0
423. 10	20616. 0
424. 10	5061. 0
425. 10	784. 0
441. 10	61032. 0
442. 10	405376. 0
443. 10	78928. 0
444. 10	7562. 0

**Instrument :**  
BNA\_M  
**ClientSampleId :**  
DFTPP46

m/z	Abundance
37.10	649.0
38.10	2004.0
39.10	12954.0
40.00	1232.0
41.10	600.0
44.00	774.0
44.90	420.0
49.20	1220.0
50.10	49640.0
51.10	193920.0
52.10	10194.0
53.00	571.0
55.10	1249.0
56.00	5610.0
57.00	13338.0
58.10	781.0
59.10	302.0
61.00	3111.0
62.10	3069.0
63.10	8908.0
64.10	1319.0
65.10	4126.0
66.00	548.0
67.00	359.0
68.00	3634.0
69.00	224704.0
70.00	1380.0
73.10	2378.0
74.10	25968.0
75.00	38248.0
76.10	12231.0
77.10	255424.0
78.10	17192.0
79.00	20168.0
80.00	14552.0
81.00	19520.0
82.10	4206.0
83.00	4400.0
84.10	427.0
85.00	3463.0
86.10	5577.0
87.10	2702.0
88.10	1007.0
89.00	577.0
91.00	4548.0
92.00	5245.0
93.10	33464.0
94.00	2174.0
94.90	408.0
96.10	1512.0
97.00	863.0
98.00	27304.0
99.00	20072.0
100.00	1740.0
101.10	9737.0
102.00	883.0
103.10	3652.0
104.10	6850.0
105.00	7126.0
106.10	2554.0
107.00	88312.0
108.10	13500.0
109.10	2631.0
110.00	150144.0
111.00	22784.0
112.10	2941.0
113.00	1009.0
115.10	305.0
116.00	5366.0
117.10	83904.0
118.00	6389.0
119.00	695.0
120.00	1253.0
122.10	5564.0
123.00	9268.0
124.00	4047.0
125.00	3504.0
127.10	275200.0
128.10	20760.0
129.00	117736.0
130.00	9913.0
131.10	1882.0
132.10	1158.0
132.90	484.0
134.00	3647.0
135.00	9258.0
136.00	3764.0
137.00	5418.0
138.00	1407.0
138.90	962.0
140.00	1785.0
141.00	15251.0

Instrument :  
BNA\_M  
ClientSampleId :  
DFTPP46

142.00	5742.0
143.00	4149.0
144.00	827.0
145.10	903.0
146.00	3120.0
147.00	8598.0
148.00	20808.0
149.00	4032.0
150.00	1046.0
151.10	1887.0
152.00	1365.0
153.00	4725.0
154.00	3501.0
155.10	8820.0
156.10	12957.0
157.10	2583.0
158.00	3451.0
159.00	2163.0
160.00	5227.0
161.10	8065.0
162.00	2435.0
163.10	782.0
164.00	988.0
165.00	6985.0
166.10	4698.0
167.00	34096.0
168.10	15487.0
169.00	2487.0
170.10	1205.0
171.00	1745.0
172.00	3161.0
173.00	4210.0
174.00	7919.0
175.10	13190.0
176.10	3468.0
177.00	6194.0
178.00	2005.0
179.00	26040.0
180.00	17544.0
181.00	7490.0
182.00	1520.0
183.00	550.0
184.00	2021.0
185.00	12302.0
186.10	98912.0
187.10	28808.0
188.00	2830.0
189.00	6245.0
190.00	1132.0
191.00	2284.0
192.00	9129.0
193.10	9751.0
194.00	1830.0
195.10	1001.0
196.00	18632.0
197.10	3703.0
198.00	691584.0
199.00	47432.0
200.00	4128.0
201.40	1886.0
201.70	1846.0
203.00	5356.0
204.10	27304.0
205.10	47904.0
206.10	192896.0
207.10	25632.0
208.00	7893.0
209.00	2430.0
210.10	3135.0
211.10	7723.0
212.90	655.0
215.00	2474.0
216.00	4233.0
217.00	51800.0
218.00	6598.0
219.00	449.0
221.10	24408.0
221.90	6696.0
223.10	11521.0
224.10	110752.0
225.10	29152.0
226.10	3022.0
227.00	50256.0
228.10	6343.0
229.00	9898.0
230.00	1374.0
231.00	3701.0
232.00	602.0
233.10	1069.0
234.00	3299.0
235.00	3756.0
236.00	2673.0
237.00	3836.0
238.00	511.0
239.00	1998.0
240.10	1418.0

**Instrument :**  
BNA\_M  
**ClientSampleId :**  
DFTPP46



241.00	2750.0
242.00	6341.0
243.10	6736.0
244.10	83624.0
245.10	10567.0
246.00	18656.0
247.00	3709.0
248.10	748.0
249.00	3042.0
250.00	585.0
250.90	1100.0
252.00	877.0
252.90	1742.0
254.20	3974.0
255.00	453824.0
256.00	67192.0
257.00	5838.0
258.00	29264.0
259.10	4197.0
260.00	745.0
261.00	810.0
264.10	802.0
265.00	12733.0
266.00	1796.0
270.10	538.0
271.00	892.0
272.10	1072.0
273.10	13115.0
274.00	36840.0
275.00	210432.0
276.00	27032.0
277.00	18608.0
278.00	3922.0
279.00	663.0
281.00	568.0
281.90	558.0
283.10	1708.0
284.00	1754.0
285.00	2997.0
286.00	559.0
289.10	669.0
290.00	719.0
291.00	535.0
292.00	984.0
293.00	4178.0
294.00	1054.0
295.00	1320.0
296.00	64952.0
297.00	8784.0
298.00	896.0
301.00	898.0
302.10	1271.0
303.10	8553.0
304.10	1940.0
308.00	1039.0
309.00	830.0
310.00	810.0
313.00	515.0
314.10	2715.0
315.00	7520.0
316.00	4009.0
317.10	583.0
321.00	1707.0
322.00	1100.0
323.10	19288.0
324.10	4056.0
325.10	363.0
326.10	512.0
327.00	3941.0
328.10	2000.0
328.80	334.0
332.10	1587.0
333.10	2230.0
334.10	13109.0
335.00	3679.0
336.00	610.0
339.00	393.0
340.00	337.0
341.10	2233.0
342.10	927.0
346.00	3597.0
347.00	758.0
352.00	5771.0
353.10	4361.0
354.10	6701.0
355.10	1234.0
359.10	367.0
365.00	27976.0
366.00	3998.0
367.00	361.0
370.00	565.0
371.00	1543.0
372.10	10412.0
373.10	2486.0
377.00	301.0
383.00	2398.0

Instrument :  
BNA\_M  
ClientSampleId :  
DFTPP46

384.00	682.0
384.90	318.0
390.00	1199.0
391.00	848.0
392.10	601.0
401.00	508.0
402.10	3903.0
403.10	5367.0
404.00	2276.0
405.00	475.0
421.00	4559.0
422.10	4449.0
423.10	32272.0
424.10	7295.0
425.10	785.0
440.20	413.0
441.10	97136.0
442.10	634048.0
443.10	126496.0
444.10	12212.0
445.10	395.0

**Instrument :**  
BNA\_M  
**ClientSampleId :**  
DFTPP46

m/z	Abundance
37.00	515.0
38.10	1641.0
39.10	7781.0
40.00	1182.0
41.10	606.0
44.00	1036.0
45.00	317.0
49.20	1227.0
50.10	30144.0
51.10	113136.0
52.10	5587.0
53.00	316.0
55.00	797.0
56.00	3520.0
57.10	8504.0
61.10	1261.0
62.10	1996.0
63.10	4601.0
64.00	804.0
65.10	2069.0
66.00	496.0
68.10	2354.0
69.00	133056.0
70.00	814.0
73.00	1652.0
74.10	14605.0
75.10	22816.0
76.10	7640.0
77.10	153600.0
78.10	10059.0
79.00	11014.0
80.00	8572.0
81.10	11296.0
82.10	2740.0
83.10	2118.0
84.10	375.0
85.00	1994.0
86.00	3979.0
87.10	1539.0
87.90	590.0
89.00	466.0
91.00	2561.0
92.10	3472.0
93.10	19832.0
94.00	1506.0
95.10	418.0
96.10	1028.0
98.00	17048.0
99.10	12668.0
100.10	1021.0
101.00	6666.0
103.00	2110.0
104.10	3968.0
105.00	4178.0
106.10	1597.0
107.00	53712.0
108.10	7057.0
109.10	1780.0
110.00	88864.0
111.00	13785.0
112.00	1699.0
112.90	506.0
116.20	2942.0
117.00	51280.0
118.00	3597.0
118.90	598.0
120.00	798.0
122.00	3478.0
123.00	5935.0
124.00	2781.0
125.10	2141.0
126.20	961.0
127.00	170368.0
128.10	12622.0
129.00	70904.0
130.00	5403.0
131.00	1312.0
131.90	587.0
133.00	363.0
134.00	2703.0
135.00	6675.0
136.00	2482.0
137.00	3035.0
138.00	720.0
139.00	388.0
140.00	905.0
141.00	11162.0
142.10	2872.0
143.00	2077.0
144.00	653.0
145.00	486.0
146.00	1731.0

Instrument :  
BNA\_M  
ClientSampleId :  
DFTPP46

147. 10	5698. 0
148. 00	13315. 0
149. 00	1972. 0
150. 10	855. 0
151. 10	1300. 0
152. 00	628. 0
153. 00	3980. 0
154. 10	2225. 0
155. 00	5872. 0
156. 00	9190. 0
157. 00	1490. 0
158. 00	2447. 0
159. 00	1681. 0
160. 00	3277. 0
161. 00	5662. 0
162. 00	1653. 0
163. 00	518. 0
163. 90	505. 0
165. 00	3761. 0
166. 00	3306. 0
167. 00	22728. 0
168. 00	11746. 0
169. 00	2008. 0
170. 00	711. 0
171. 00	1107. 0
172. 00	2141. 0
173. 00	2000. 0
174. 00	4719. 0
175. 10	9281. 0
176. 00	2168. 0
177. 00	4244. 0
178. 10	1296. 0
179. 00	17872. 0
180. 10	12061. 0
181. 00	5321. 0
182. 00	831. 0
182. 80	334. 0
184. 00	1384. 0
185. 00	9110. 0
186. 10	65792. 0
187. 10	19008. 0
188. 00	1670. 0
189. 00	4806. 0
190. 10	881. 0
190. 90	2019. 0
192. 00	5279. 0
193. 10	7086. 0
194. 00	1583. 0
194. 90	1003. 0
196. 00	12138. 0
198. 00	459520. 0
199. 00	28392. 0
200. 00	2313. 0
201. 50	1423. 0
203. 00	3543. 0
204. 10	18824. 0
205. 10	29952. 0
206. 10	131840. 0
207. 10	17008. 0
208. 10	4841. 0
209. 00	1496. 0
210. 00	1916. 0
211. 00	5578. 0
211. 80	980. 0
213. 00	362. 0
215. 00	1897. 0
216. 00	3479. 0
217. 00	38008. 0
218. 00	4470. 0
219. 10	435. 0
220. 10	888. 0
221. 00	15975. 0
222. 00	5048. 0
223. 00	7766. 0
224. 10	78920. 0
225. 10	18792. 0
226. 10	2361. 0
227. 00	34424. 0
228. 00	5071. 0
229. 00	6749. 0
229. 90	773. 0
231. 00	2931. 0
231. 90	354. 0
233. 10	560. 0
234. 00	2344. 0
235. 00	2354. 0
236. 00	1824. 0
237. 10	2913. 0
238. 00	404. 0
239. 10	1457. 0
240. 00	1011. 0
241. 00	1882. 0
242. 10	3578. 0
243. 10	4220. 0
244. 10	62432. 0
245. 10	7763. 0

**Instrument :**  
BNA\_M  
**ClientSampleId :**  
DFTPP46

246.00	14592.0
247.00	2706.0
248.00	575.0
249.00	2031.0
249.80	333.0
251.00	879.0
252.10	546.0
253.00	1478.0
254.20	2134.0
255.00	343424.0
256.00	49472.0
257.00	4259.0
258.10	20664.0
259.00	3368.0
260.00	744.0
261.00	585.0
264.00	681.0
265.00	9299.0
265.90	1067.0
270.90	696.0
272.10	801.0
273.00	10198.0
274.00	30152.0
275.00	158656.0
276.00	20224.0
277.00	14898.0
278.00	2751.0
279.00	562.0
281.10	849.0
282.00	616.0
283.00	1649.0
284.00	1298.0
285.00	2004.0
286.00	409.0
289.10	353.0
290.00	314.0
290.90	523.0
292.00	556.0
293.00	3395.0
294.00	866.0
295.20	544.0
296.00	51720.0
297.00	6816.0
297.90	579.0
301.10	712.0
302.00	588.0
303.00	6031.0
304.10	1663.0
308.10	619.0
309.10	417.0
309.90	641.0
313.00	500.0
314.00	2397.0
315.00	6685.0
316.00	2897.0
317.00	603.0
321.00	1296.0
322.10	621.0
323.10	15328.0
324.00	3254.0
325.10	404.0
326.10	420.0
327.00	2728.0
328.00	1071.0
329.00	341.0
332.00	1184.0
333.00	1597.0
334.10	10975.0
335.00	2635.0
336.00	552.0
341.00	1913.0
342.10	769.0
346.00	3474.0
347.00	788.0
351.10	394.0
352.10	5438.0
353.10	3282.0
354.10	6030.0
355.10	866.0
359.00	482.0
365.00	25280.0
366.00	3254.0
370.00	472.0
371.10	1281.0
372.00	7906.0
373.10	2352.0
376.90	393.0
383.10	2413.0
384.00	679.0
390.00	1049.0
390.90	626.0
392.20	437.0
401.00	796.0
402.00	3723.0
403.00	4856.0
404.00	1681.0

Instrument :  
BNA\_M  
ClientSampleId :  
DFTPP46

405. 10	330. 0
421. 00	4665. 0
422. 10	4331. 0
423. 10	30064. 0
424. 00	5842. 0
424. 90	696. 0
441. 10	89440. 0
442. 10	592256. 0
443. 10	107336. 0
444. 10	9993. 0
445. 10	633. 0

**Instrument :**  
BNA\_M  
**ClientSampleId :**  
DFTPP46