

Data Path : Z:\HPCHEM1\BNA\_M\DATA\BM122617\  
 Data File : BM013532.D  
 Acq On : 26 Dec 2017 13:40  
 Operator : SJ/JU  
 Sample : I7046-02  
 Misc :  
 ALS Vial : 7 Sample Multiplier: 1

Instrument :  
 BNA\_M  
 ClientSampleId :  
 C0FL2

Quant Time: Dec 27 03:09:05 2017  
 Quant Method : Z:\HPCHEM1\BNA\_M\METHODS\SOM-EPA-BM113017.M  
 Quant Title : SVOA CALIBRATION  
 QLast Update : Wed Dec 27 02:01:07 2017  
 Response via : Initial Calibration

Internal Standards	R.T.	QIon	Response	Conc	Units	Dev(Min)
1) 1,4-Dichlorobenzene-d4	7.67	152	187210	20.00	ng/ul	0.00
18) Naphthalene-d8	10.45	136	839463	20.00	ng/ul	0.00
35) Acenaphthene-d10	14.31	164	497211	20.00	ng/ul	0.00
61) Phenanthrene-d10	17.06	188	1032855	20.00	ng/ul	0.00
75) Chrysene-d12	21.26	240	849832	20.00	ng/ul	0.00
83) Perylene-d12	23.47	264	780958	20.00	ng/ul	0.00

## System Monitoring Compounds

3) 1,4-Dioxane-d8	3.22	96	20532	5.43	ng/uL	0.00
5) Phenol-d5	6.85	99	452920	27.96	ng/ul	0.00
7) Bis-(2-Chloroethyl)ether-d	7.01	67	278959	30.20	ng/ul	0.00
9) 2-Chlorophenol-d4	7.20	132	378626	29.91	ng/ul	0.00
13) 4-Methylphenol-d8	8.37	113	345444	24.96	ng/ul	0.00
19) Nitrobenzene-d5	8.82	128	200876	30.17	ng/ul	0.00
22) 2-Nitrophenol-d4	9.54	143	214105	30.05	ng/ul	0.00
26) 2,4-Dichlorophenol-d3	10.07	165	391449	26.66	ng/ul	0.00
29) 4-Chloroaniline-d4	10.59	131	381706	28.29	ng/ul	0.00
43) Dimethylphthalate-d6	13.73	166	1242031	28.07	ng/ul	0.00
46) Acenaphthylene-d8	14.00	160	1594992	29.21	ng/ul	0.00
51) 4-Nitrophenol-d4	14.53	143	107038	13.92	ng/ul	0.00
57) Fluorene-d10	15.31	176	1057599	27.79	ng/ul	0.00
62) 4,6-Dinitro-2-methylphenol	15.44	200	123581	19.02	ng/ul	0.00
70) Anthracene-d10	17.16	188	1508135	29.16	ng/ul	0.00
76) Pyrene-d10	19.46	212	1494753	35.30	ng/ul	0.00
87) Benzo(a)pyrene-d12	23.33	264	1180261	29.67	ng/ul	0.00

## Target Compounds

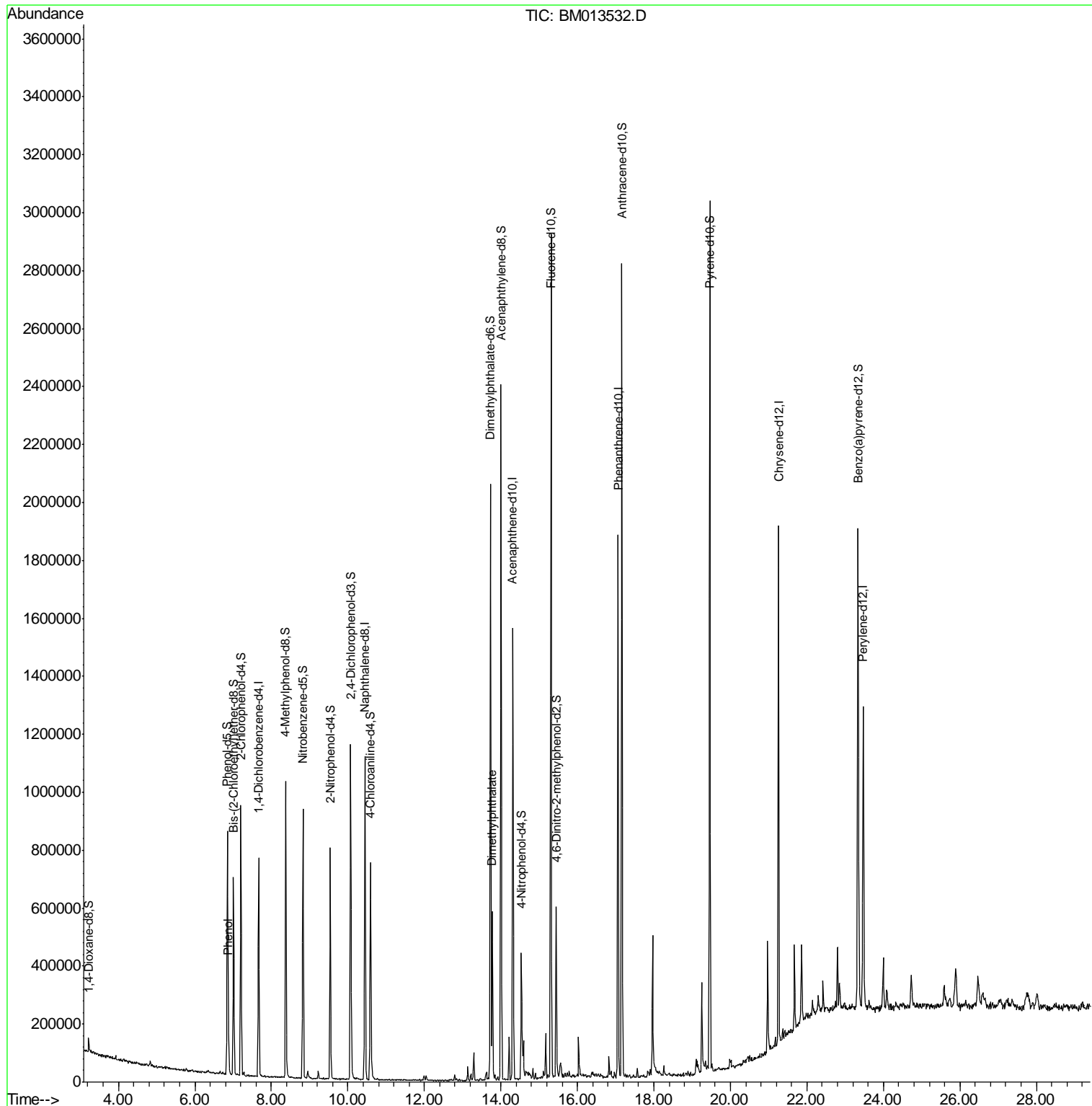
					Qvalue
6) Phenol	6.87	94	66772	4.170 ng/ul#	87
44) Dimethylphthalate	13.77	163	338051	7.988 ng/ul	96

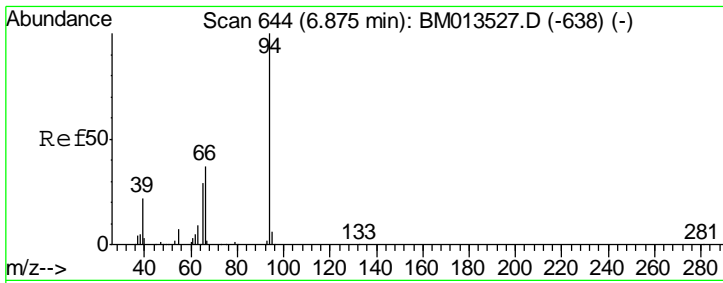
(#) = qualifier out of range (m) = manual integration (+) = signals summed

Data Path : Z:\HPCHEM1\BNA\_M\DATA\BM122617\  
 Data File : BM013532.D  
 Acq On : 26 Dec 2017 13:40  
 Operator : SJ/JU  
 Sample : I7046-02  
 Misc :  
 ALS Vial : 7 Sample Multiplier: 1

Instrument :  
 BNA\_M  
 ClientSampled :  
 C0FL2

Quant Time: Dec 27 03:09:05 2017  
 Quant Method : Z:\HPCHEM1\BNA\_M\METHODS\SOM-EPA-BM113017.M  
 Quant Title : SVOA CALIBRATION  
 QLast Update : Wed Dec 27 02:01:07 2017  
 Response via : Initial Calibration

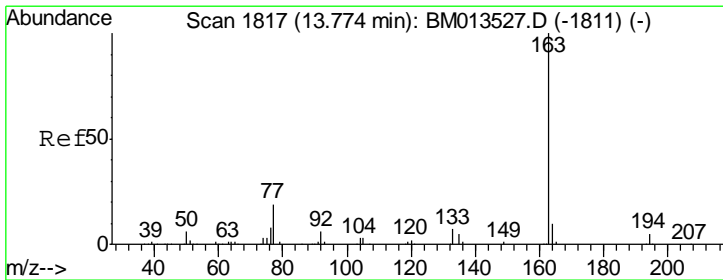
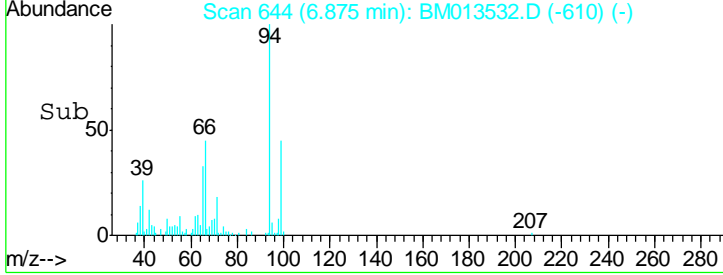
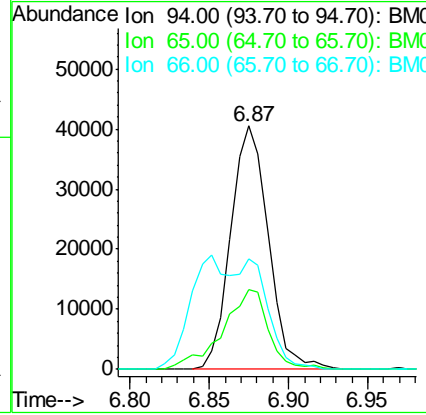
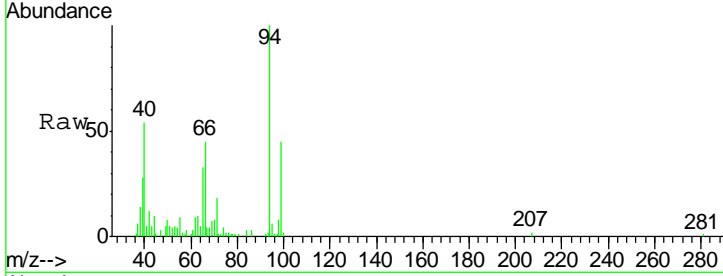




#6  
 Phenol  
 Concen: 4.170 ng/ul  
 RT: 6.87 min Scan# 644  
 Delta R.T. -0.00 min  
 Lab File: BM013532.D  
 Acq: 26 Dec 2017 13:40

Instrument :  
 BNA\_M  
 ClientSampled :  
 C0FL2

Tgt Ion	Resp	Lower	Upper
94	66772		
65	33.0	28.2	42.4
66	45.2	47.2	70.8#



#44  
 Dimethylphthalate  
 Concen: 7.988 ng/ul  
 RT: 13.77 min Scan# 1817  
 Delta R.T. -0.00 min  
 Lab File: BM013532.D  
 Acq: 26 Dec 2017 13:40

Tgt Ion	Resp	Lower	Upper
163	338051		
194	3.7	3.5	5.3
164	8.6	8.2	12.4

