

Data Path : Z:\HPCHEM1\BNA\_M\DATA\BM122617\  
 Data File : BM013531.D  
 Acq On : 26 Dec 2017 13:04  
 Operator : SJ/JU  
 Sample : I7046-01  
 Misc :  
 ALS Vial : 6 Sample Multiplier: 1

Instrument :  
 BNA\_M  
 ClientSampleId :  
 C0FL1

## Integration Parameters: LSCINT.P

Integrator: RTE  
 Smoothing : OFF Filtering: 5  
 Sampling : 1 Min Area: 1 % of largest Peak  
 Start Thrs: 0.2 Max Peaks: 100  
 Stop Thrs : 0 Peak Location: TOP

If leading or trailing edge < 100 prefer < Baseline drop else tangent >  
 Peak separation: 5

Method : Z:\HPCHEM1\BNA\_M\METHODS\SOM-EPA-BM113017.M  
 Title : SVOA CALIBRATION

Signal : TIC

peak #	R.T. min	first scan	max scan	last scan	PK TY	peak height	corr. area	corr. % max.	% of total
1	3.223	20	23	29	rVB2	45174	63556	1.64%	0.132%
2	4.834	294	297	303	rVB4	29760	44784	1.15%	0.093%
3	6.846	630	639	654	rBV2	774399	1458545	37.58%	3.024%
4	7.011	662	667	677	rVB	605174	899970	23.19%	1.866%
5	7.205	693	700	710	rVB	816986	1284024	33.08%	2.662%
6	7.669	772	779	787	rBV	648306	1028447	26.50%	2.132%
7	8.375	893	899	910	rBV2	975807	1557336	40.13%	3.228%
8	8.822	967	975	986	rBV	868470	1417625	36.53%	2.939%
9	9.540	1088	1097	1104	rBV	708940	1189206	30.64%	2.465%
10	10.075	1180	1188	1201	rBV	1026030	1806525	46.55%	3.745%
11	10.446	1243	1251	1263	rVB	938035	1488201	38.34%	3.085%
12	10.593	1268	1276	1287	rBV	682072	1231381	31.73%	2.553%
13	13.134	1703	1708	1716	rVB2	43174	65486	1.69%	0.136%
14	13.287	1727	1734	1738	rVB5	30454	41583	1.07%	0.086%
15	13.628	1784	1792	1795	rBV9	22745	43866	1.13%	0.091%
16	13.728	1802	1809	1813	rBV	1854107	2579737	66.47%	5.348%
17	13.775	1813	1817	1824	rVB	500490	717672	18.49%	1.488%
18	14.004	1848	1856	1866	rBV	2060935	3061455	78.88%	6.347%
19	14.216	1885	1892	1897	rBV	118154	152214	3.92%	0.316%
20	14.310	1901	1908	1917	rVV2	1277315	1976965	50.94%	4.098%
21	14.534	1940	1946	1952	rBV	449125	791784	20.40%	1.641%
22	14.586	1952	1955	1961	rVB3	83303	132791	3.42%	0.275%
23	14.839	1993	1998	2003	rVB6	27260	42938	1.11%	0.089%
24	15.169	2051	2054	2060	rVB	136311	168158	4.33%	0.349%
25	15.310	2071	2078	2085	rBV	2646457	3636876	93.71%	7.540%
26	15.439	2095	2100	2113	rBV	515600	788634	20.32%	1.635%
27	15.551	2115	2119	2122	rVV4	37113	67041	1.73%	0.139%
28	16.033	2195	2201	2209	rBV	116889	206213	5.31%	0.427%
29	16.828	2332	2336	2341	rBV2	69263	88477	2.28%	0.183%
30	16.963	2356	2359	2365	rBV7	31075	41286	1.06%	0.086%
31	17.063	2368	2376	2382	rVV2	1586908	2271341	58.52%	4.709%
32	17.163	2386	2393	2405	rVB	2515074	3692859	95.15%	7.656%
33	17.569	2458	2462	2466	rVB2	29592	38932	1.00%	0.081%
34	17.845	2502	2509	2514	rBV6	31868	66783	1.72%	0.138%

Data Path : Z:\HPCHEM1\BNA\_M\DATA\BM122617\  
 Data File : BM013531.D  
 Acq On : 26 Dec 2017 13:04  
 Operator : SJ/JU  
 Sample : I7046-01  
 Misc :  
 ALS Vial : 6 Sample Multiplier: 1

Instrument :  
 BNA\_M  
 ClientSampleId :  
 C0FL1

Integration Parameters: LSCINT.P  
 Integrator: RTE  
 Smoothing : OFF  
 Sampling : 1  
 Start Thrs: 0.2  
 Stop Thrs : 0

Filtering: 5  
 Min Area: 1 % of largest Peak  
 Max Peaks: 100  
 Peak Location: TOP

If leading or trailing edge < 100 prefer < Baseline drop else tangent >  
 Peak separation: 5

Method : Z:\HPCHEM1\BNA\_M\METHODS\SOM-EPA-BM113017.M  
 Title : SVOA CALIBRATION

35	17.963	2524	2529	2539	rBV	294043	432369	11.14%	0.896%
36	18.257	2576	2579	2584	rBV7	36422	53205	1.37%	0.110%
37	19.098	2717	2722	2724	rBV2	45634	68195	1.76%	0.141%
38	19.127	2725	2727	2736	rVB8	38316	67683	1.74%	0.140%
39	19.251	2743	2748	2756	rBV2	154481	240912	6.21%	0.499%
40	19.463	2778	2784	2790	rBV	2818859	3881118	100.00%	8.046%
41	19.516	2790	2793	2798	rVB6	37146	46731	1.20%	0.097%
42	20.968	3036	3040	3052	rBV3	196338	325231	8.38%	0.674%
43	21.174	3072	3075	3079	rVB3	52687	56426	1.45%	0.117%
44	21.251	3083	3088	3097	rVV	1637050	2162436	55.72%	4.483%
45	21.845	3185	3189	3190	rBV4	81290	100229	2.58%	0.208%
46	22.421	3285	3287	3292	rVB2	91003	102970	2.65%	0.213%
47	22.798	3347	3351	3355	rBV2	131445	197020	5.08%	0.408%
48	23.333	3435	3442	3458	rBV2	1783803	3526420	90.86%	7.311%
49	23.474	3459	3466	3475	rVB	986820	1885037	48.57%	3.908%
50	23.998	3551	3555	3561	rVB4	129777	231884	5.97%	0.481%
51	27.733	4182	4190	4205	rBV4	186853	716942	18.47%	1.486%

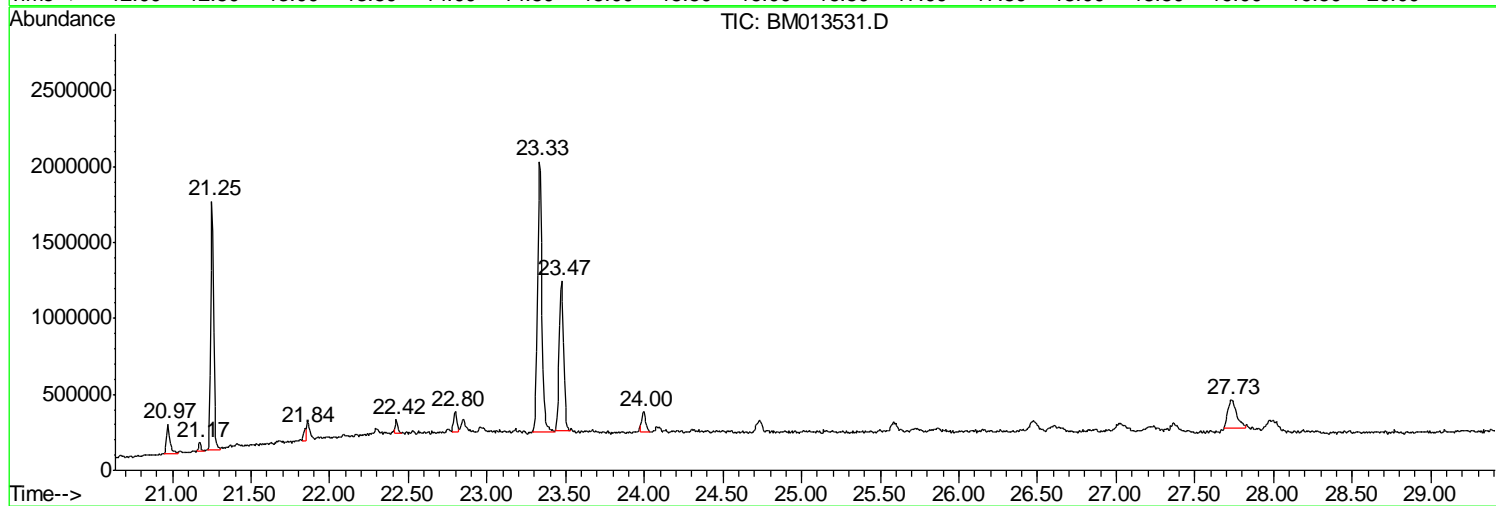
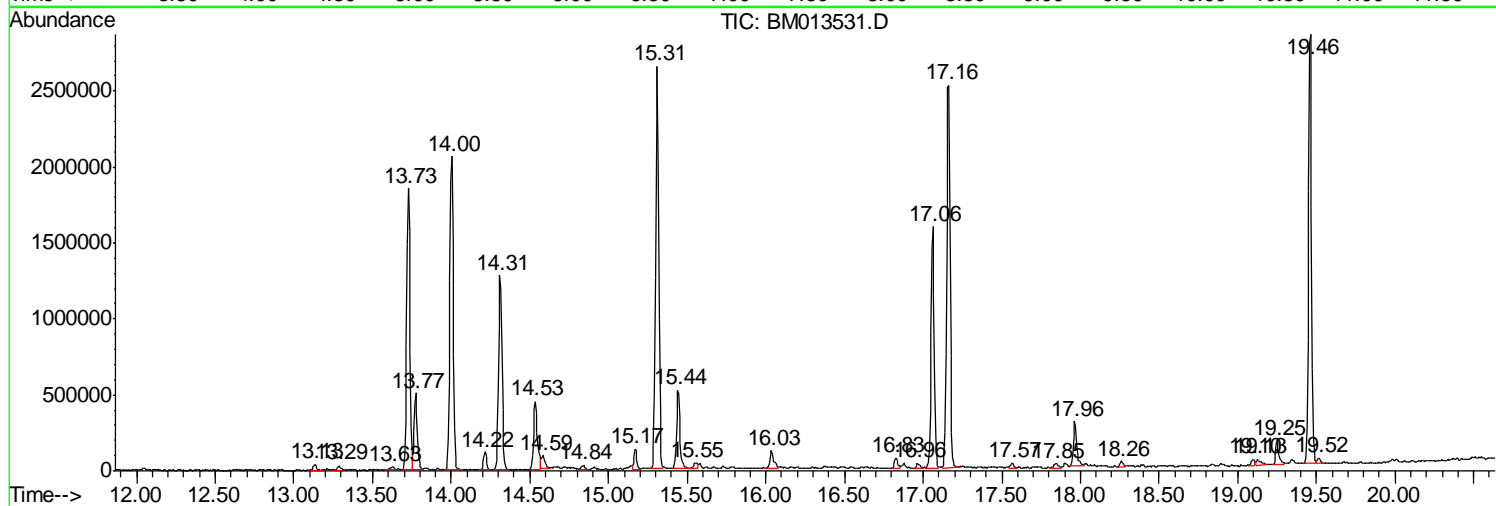
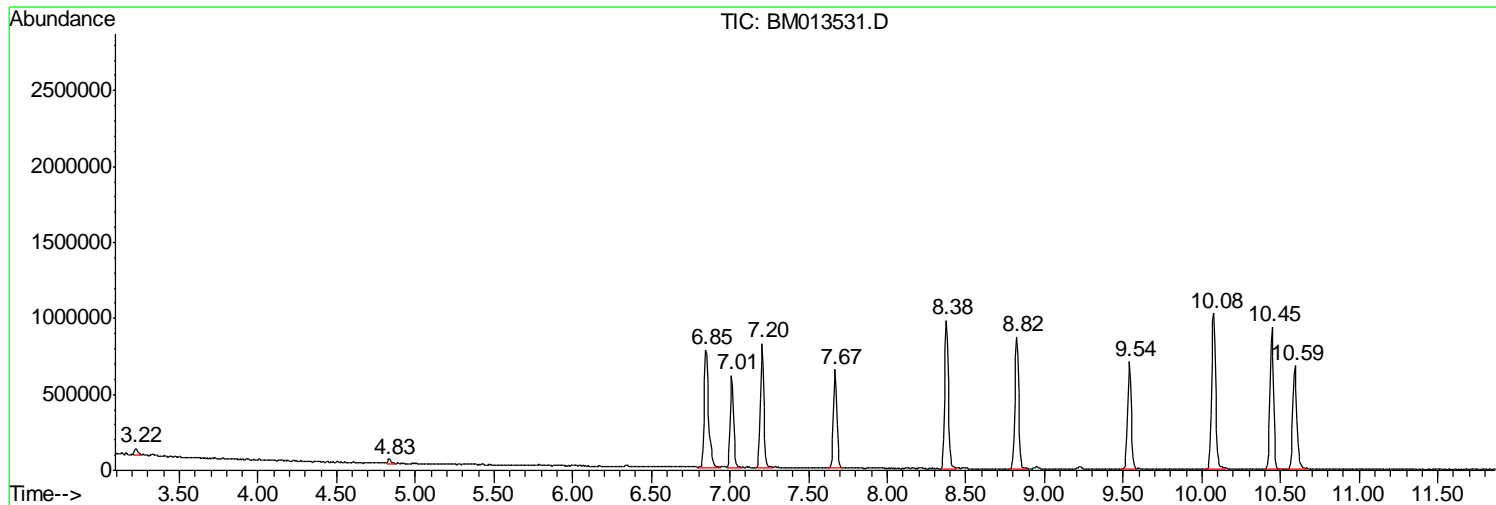
Sum of corrected areas: 48237499

Data Path : Z:\HPCHEM1\BNA\_M\DATA\BM122617\  
Data File : BM013531.D  
Acq On : 26 Dec 2017 13:04  
Operator : SJ/JU  
Sample : I7046-01  
Misc :  
ALS Vial : 6 Sample Multiplier: 1

Instrument :  
BNA\_M  
ClientSampleId :  
C0FL1

Quant Method : Z:\HPCHEM1\BNA\_M\METHODS\SOM-EPA-BM113017.M  
Quant Title : SVOA CALIBRATION

TIC Library : C:\DATABASE\NIST11.L  
TIC Integration Parameters: LSCINT.P



Data Path : Z:\HPCHEM1\BNA\_M\DATA\BM122617\  
 Data File : BM013531.D  
 Acq On : 26 Dec 2017 13:04  
 Operator : SJ/JU  
 Sample : I7046-01  
 Misc :  
 ALS Vial : 6 Sample Multiplier: 1

Instrument :  
 BNA\_M  
 ClientSampled :  
 C0FL1

Quant Method : Z:\HPCHEM1\BNA\_M\METHODS\SOM-EPA-BM113017.M  
 Quant Title : SVOA CALIBRATION

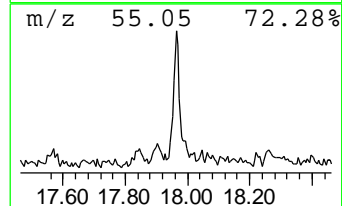
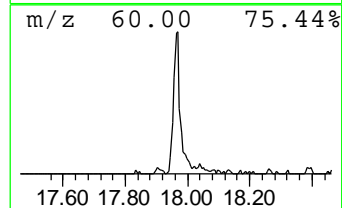
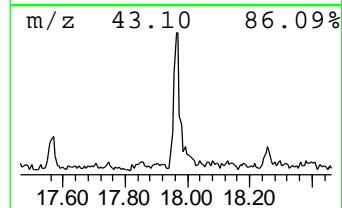
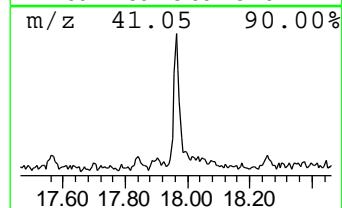
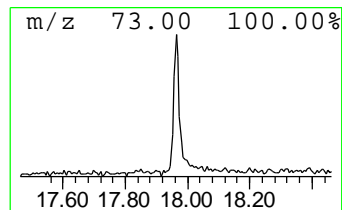
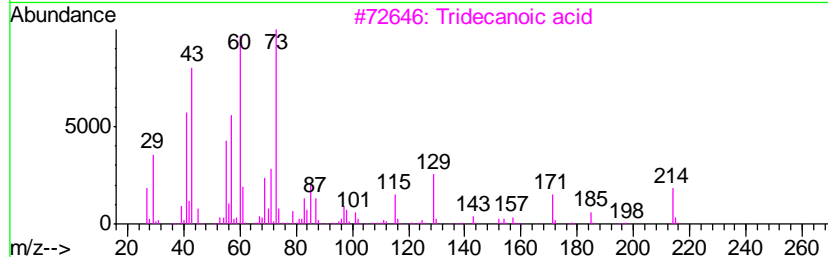
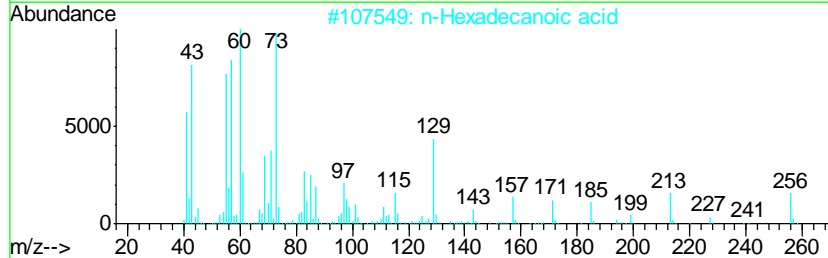
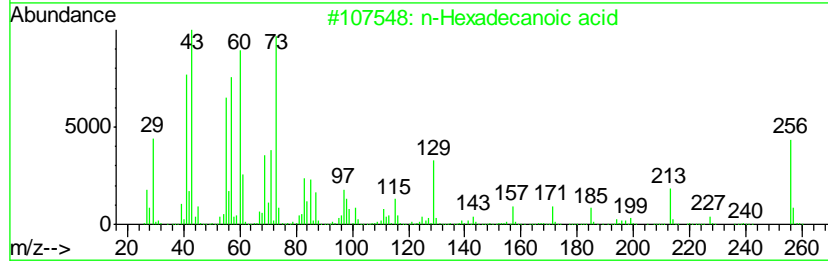
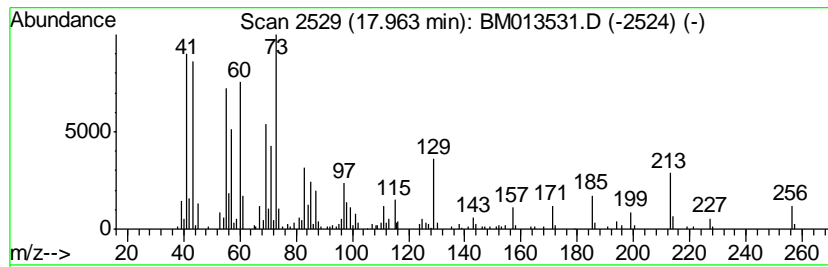
TIC Library : C:\DATABASE\NIST11.L  
 TIC Integration Parameters: LSCINT.P

\*\*\*\*\*  
 Peak Number 1 n-Hexadecanoic acid Concentration Rank 2

R.T.	EstConc	Area	Relative to ISTD	R.T.
17.96	3.81 ng/ul	432369	Phenanthrene-d10	17.06

Hit#	of	Tentative ID	MW	MolForm	CAS#	Qual
1	5	n-Hexadecanoic acid	256	C16H32O2	000057-10-3	95
2		n-Hexadecanoic acid	256	C16H32O2	000057-10-3	92
3		Tridecanoic acid	214	C13H26O2	000638-53-9	83
4		Tridecanoic acid	214	C13H26O2	000638-53-9	76
5		Tridecanoic acid	214	C13H26O2	000638-53-9	70



Data Path : Z:\HPCHEM1\BNA\_M\DATA\BM122617\  
 Data File : BM013531.D  
 Acq On : 26 Dec 2017 13:04  
 Operator : SJ/JU  
 Sample : I7046-01  
 Misc :  
 ALS Vial : 6 Sample Multiplier: 1

Instrument :  
 BNA\_M  
 ClientSampled :  
 C0FL1

Quant Method : Z:\HPCHEM1\BNA\_M\METHODS\SOM-EPA-BM113017.M  
 Quant Title : SVOA CALIBRATION

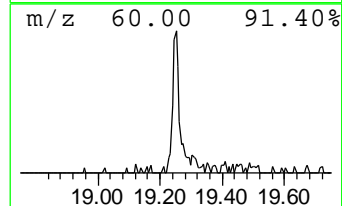
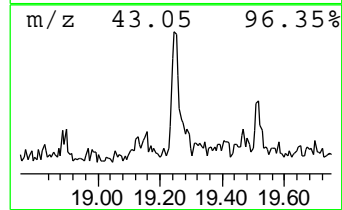
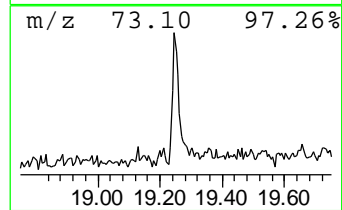
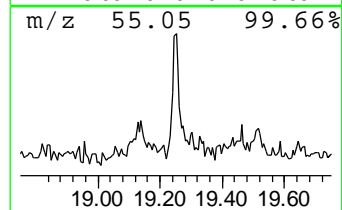
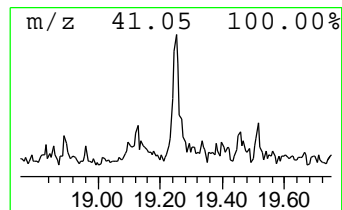
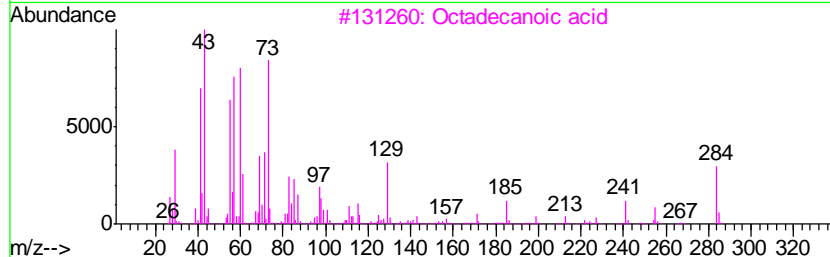
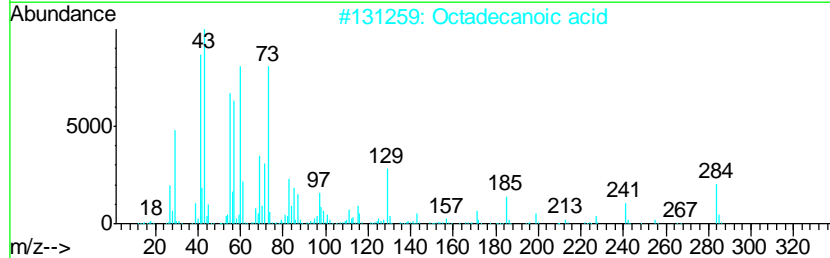
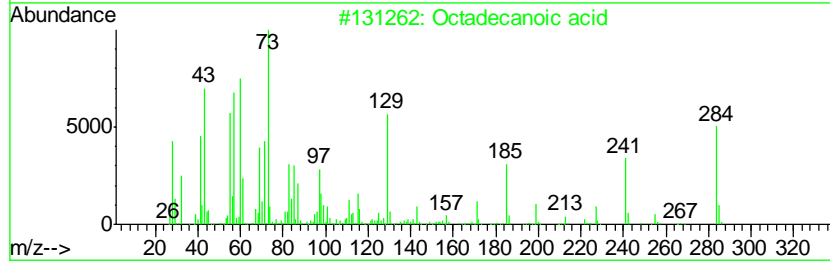
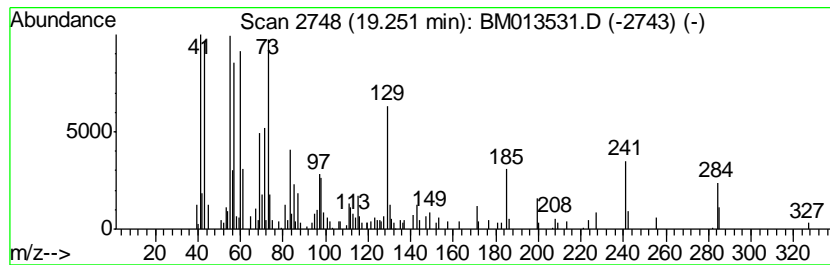
TIC Library : C:\DATABASE\NIST11.L  
 TIC Integration Parameters: LSCINT.P

\*\*\*\*\*  
 Peak Number 2 Octadecanoic acid Concentration Rank 5

R.T.	EstConc	Area	Relative to ISTD	R.T.
19.25	2.23 ng/ul	240912	Chrysene-d12	21.25

Hit#	of	Tentative ID	MW	MolForm	CAS#	Qual
1	5	Octadecanoic acid	284	C18H36O2	000057-11-4	94
2		Octadecanoic acid	284	C18H36O2	000057-11-4	90
3		Octadecanoic acid	284	C18H36O2	000057-11-4	81
4		n-Hexadecanoic acid	256	C16H32O2	000057-10-3	53
5		n-Decanoic acid	172	C10H20O2	000334-48-5	50



Data Path : Z:\HPCHEM1\BNA\_M\DATA\BM122617\  
 Data File : BM013531.D  
 Acq On : 26 Dec 2017 13:04  
 Operator : SJ/JU  
 Sample : I7046-01  
 Misc :  
 ALS Vial : 6 Sample Multiplier: 1

Instrument :  
 BNA\_M  
 ClientSampleID :  
 C0FL1

Quant Method : Z:\HPCHEM1\BNA\_M\METHODS\SOM-EPA-BM113017.M  
 Quant Title : SVOA CALIBRATION

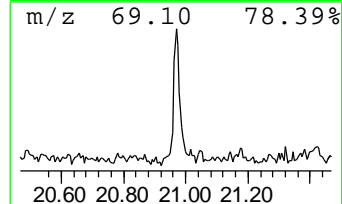
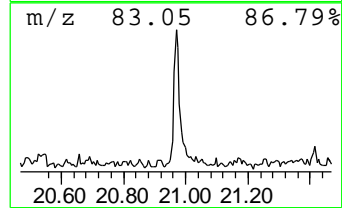
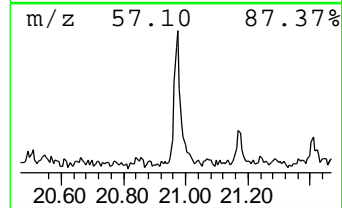
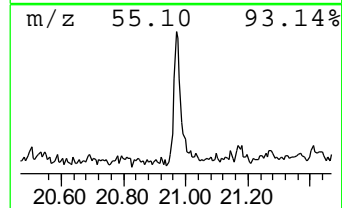
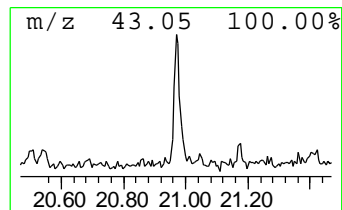
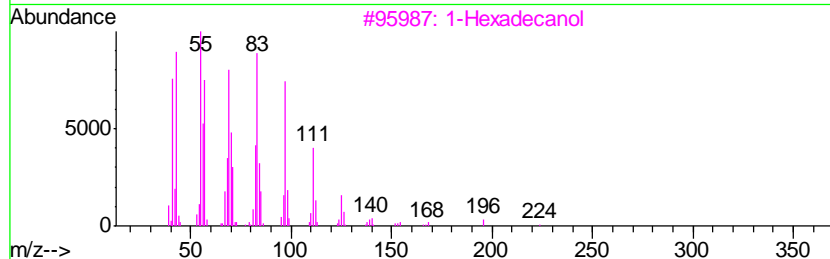
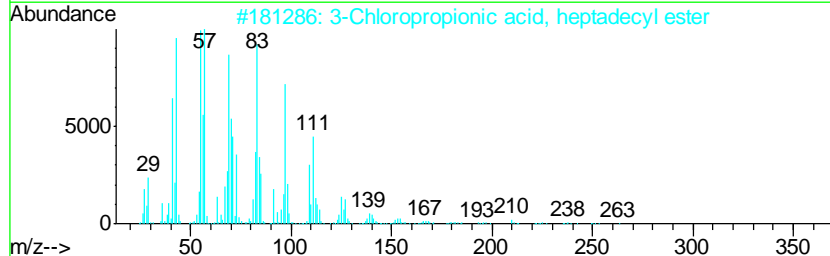
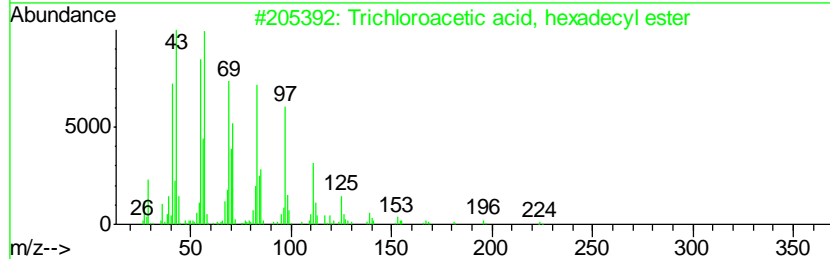
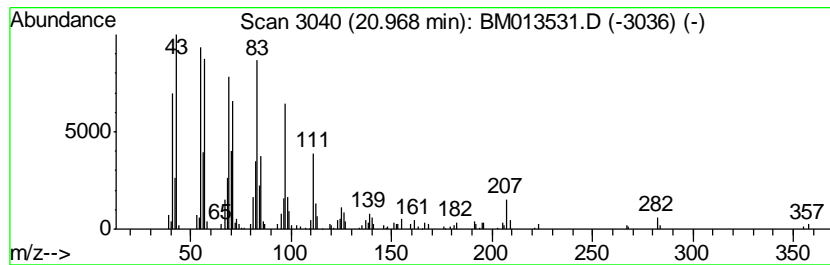
TIC Library : C:\DATABASE\NIST11.L  
 TIC Integration Parameters: LSCINT.P

\*\*\*\*\*  
 Peak Number 3 Trichloroacetic acid, hexad... Concentration Rank 3

R.T.	EstConc	Area	Relative to ISTD	R.T.
20.97	3.01 ng/ul	325231	Chrysene-d12	21.25

Hit#	of	Tentative ID	MW	MolForm	CAS#	Qual
1	5	Trichloroacetic acid, hexadecyl ...	386	C18H33Cl3O2	074339-54-1	94
2		3-Chloropropionic acid, heptadec...	346	C20H39ClO2	1000283-05-1	90
3		1-Hexadecanol	242	C16H34O	036653-82-4	90
4		17-Pentatriacontene	491	C35H70	006971-40-0	90
5		1-Heneicosanol	312	C21H44O	015594-90-8	90



Data Path : Z:\HPCHEM1\BNA\_M\DATA\BM122617\  
 Data File : BM013531.D  
 Acq On : 26 Dec 2017 13:04  
 Operator : SJ/JU  
 Sample : I7046-01  
 Misc :  
 ALS Vial : 6 Sample Multiplier: 1

Instrument :  
 BNA\_M  
 ClientSampleID :  
 C0FL1

Quant Method : Z:\HPCHEM1\BNA\_M\METHODS\SOM-EPA-BM113017.M  
 Quant Title : SVOA CALIBRATION

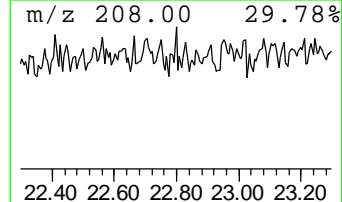
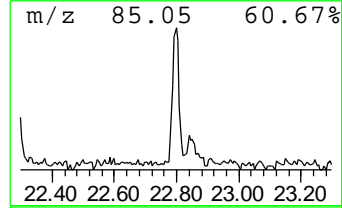
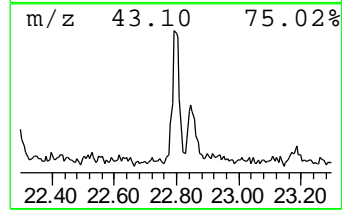
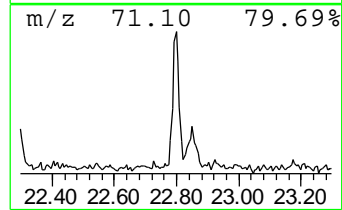
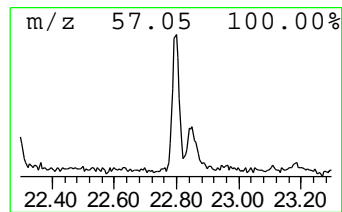
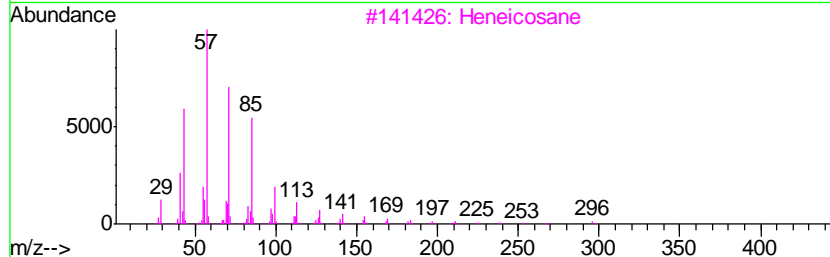
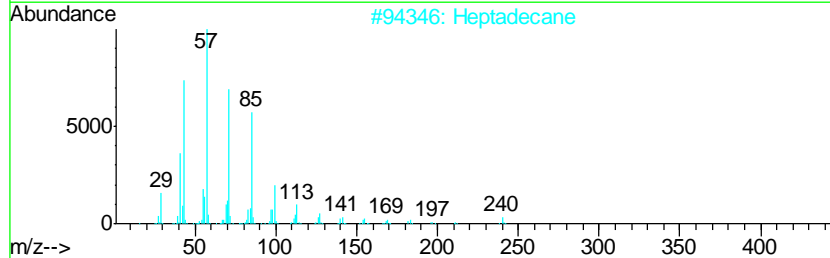
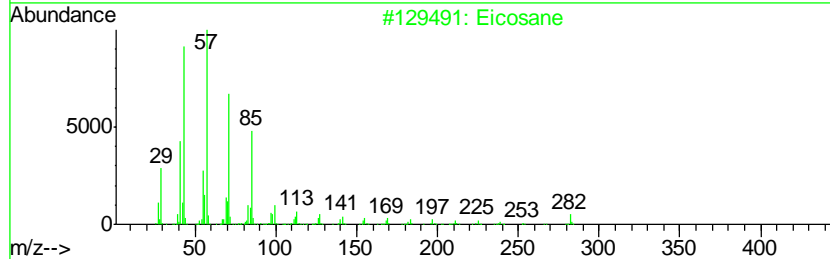
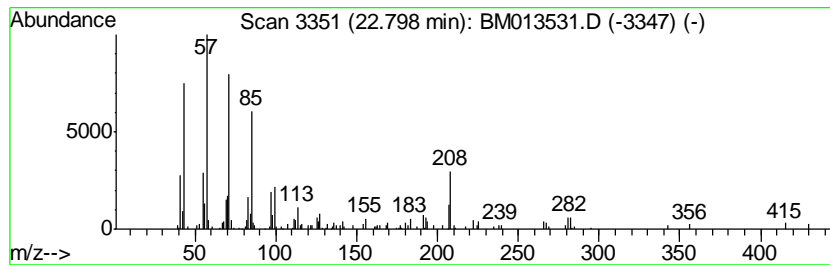
TIC Library : C:\DATABASE\NIST11.L  
 TIC Integration Parameters: LSCINT.P

\*\*\*\*\*  
 Peak Number 4 (DEL) Alkane: Straight-Chai... Concentration Rank 6

R.T.	EstConc	Area	Relative to ISTD	R.T.
22.80	2.09 ng/ul	197020	Perylene-d12	23.47

Hit#	of	Tentative ID	MW	MolForm	CAS#	Qual
1	5	Eicosane	282	C20H42	000112-95-8	97
2		Heptadecane	240	C17H36	000629-78-7	62
3		Heneicosane	296	C21H44	000629-94-7	62
4		Tridecanol, 2-ethyl-2-methyl-	242	C16H34O	1000115-66-1	58
5		Hexacosane	366	C26H54	000630-01-3	58



Data Path : Z:\HPCHEM1\BNA\_M\DATA\BM122617\  
 Data File : BM013531.D  
 Acq On : 26 Dec 2017 13:04  
 Operator : SJ/JU  
 Sample : I7046-01  
 Misc :  
 ALS Vial : 6 Sample Multiplier: 1

Instrument :  
 BNA\_M  
 ClientSampled :  
 C0FL1

Quant Method : Z:\HPCHEM1\BNA\_M\METHODS\SOM-EPA-BM113017.M  
 Quant Title : SVOA CALIBRATION

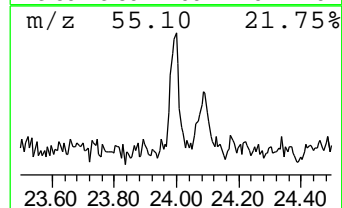
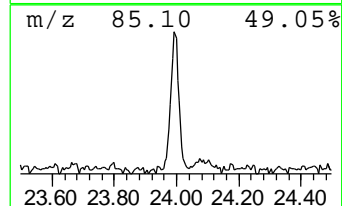
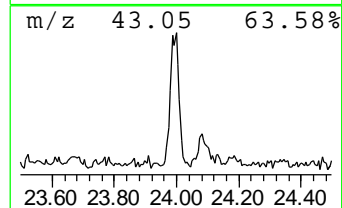
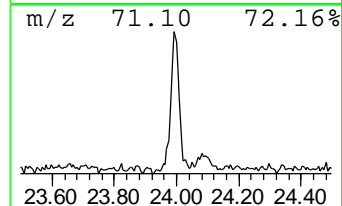
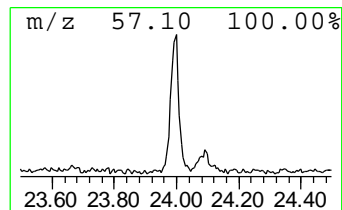
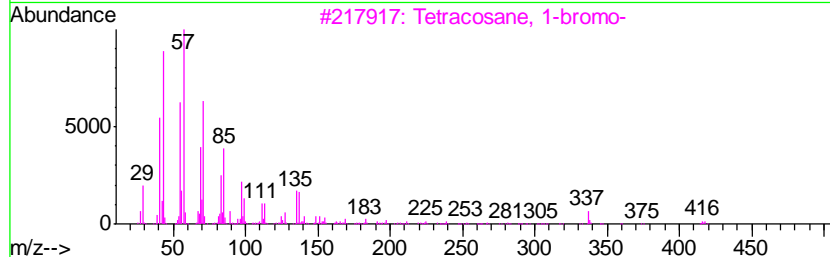
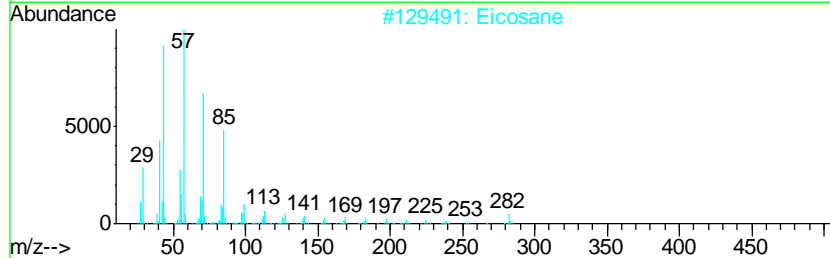
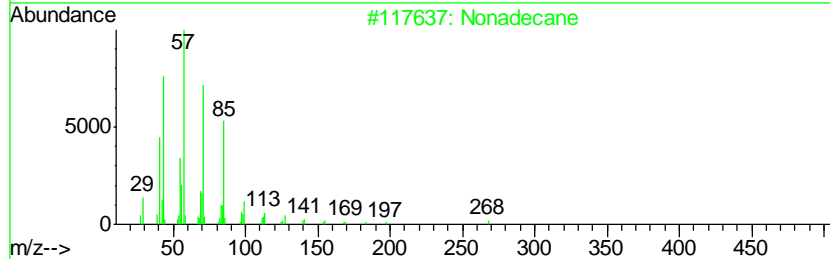
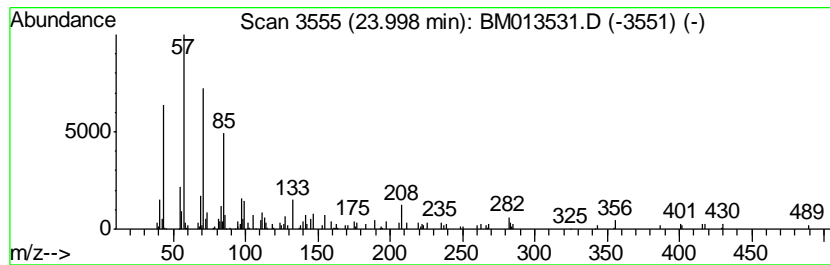
TIC Library : C:\DATABASE\NIST11.L  
 TIC Integration Parameters: LSCINT.P

\*\*\*\*\*  
 Peak Number 5 (DEL) Alkane: Straight-Chai... Concentration Rank 4

R.T.	EstConc	Area	Relative to ISTD	R.T.
24.00	2.46 ng/ul	231884	Perylene-d12	23.47

Hit#	of	Tentative ID	MW	MolForm	CAS#	Qual
1	5	Nonadecane	268	C19H40	000629-92-5	86
2		Eicosane	282	C20H42	000112-95-8	86
3		Tetracosane, 1-bromo-	416	C24H49Br	006946-24-3	64
4		Eicosane	282	C20H42	000112-95-8	62
5		Octacosane	394	C28H58	000630-02-4	58





Data Path : Z:\HPCHEM1\BNA\_M\DATA\BM122617\  
 Data File : BM013531.D  
 Acq On : 26 Dec 2017 13:04  
 Operator : SJ/JU  
 Sample : I7046-01  
 Misc :  
 ALS Vial : 6 Sample Multiplier: 1

Instrument :  
 BNA\_M  
 ClientSampled :  
 C0FL1

Quant Method : Z:\HPCHEM1\BNA\_M\METHODS\SOM-EPA-BM113017.M  
 Quant Title : SVOA CALIBRATION

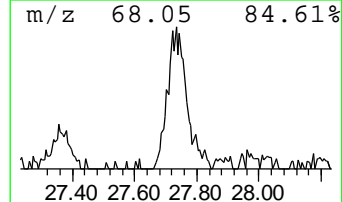
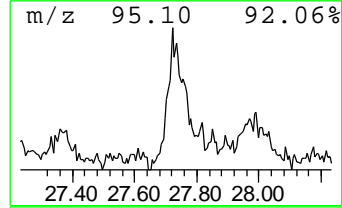
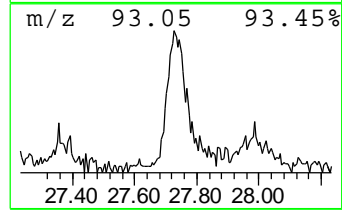
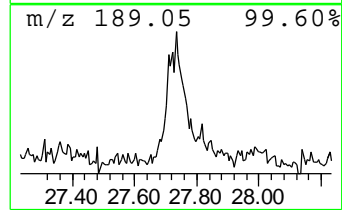
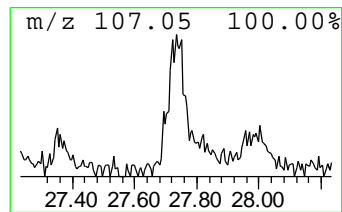
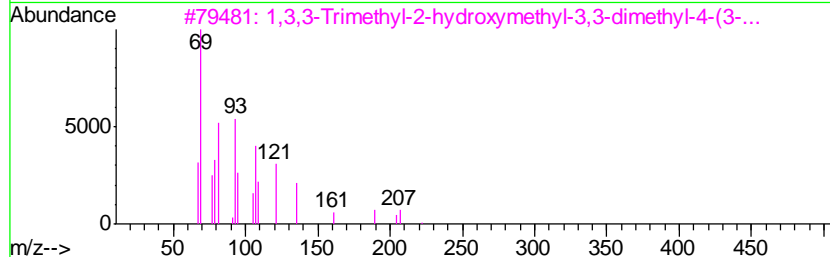
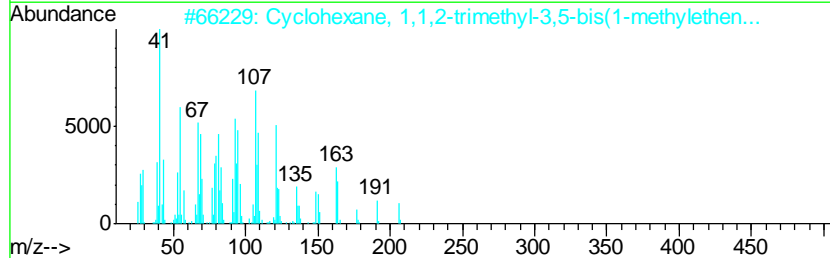
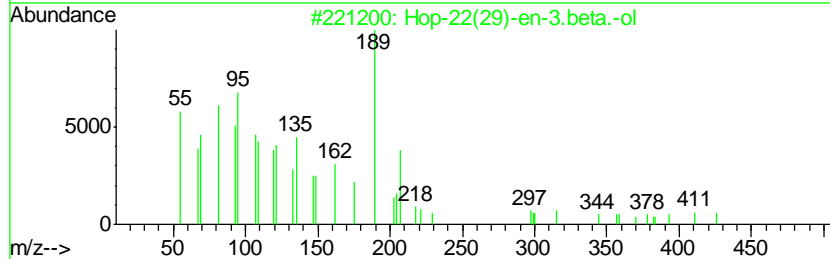
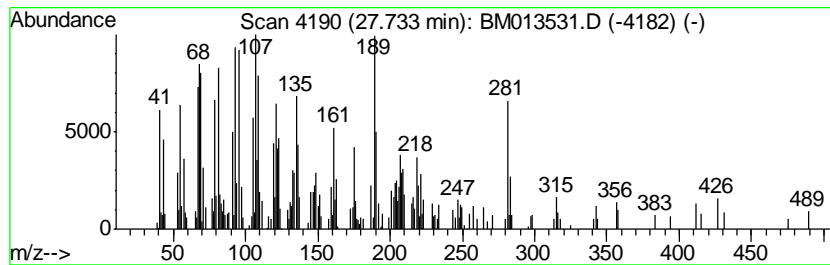
TIC Library : C:\DATABASE\NIST11.L  
 TIC Integration Parameters: LSCINT.P

\*\*\*\*\*  
 Peak Number 6 Hop-22(29)-en-3.beta.-ol Concentration Rank 1

R.T.	EstConc	Area	Relative to ISTD	R.T.
27.73	7.61 ng/ul	716942	Perylene-d12	23.47

Hit#	of	Tentative ID	MW	MolForm	CAS#	Qual
1	5	Hop-22(29)-en-3.beta.-ol	426	C30H50O	058801-23-3	83
2		Cyclohexane, 1,1,2-trimethyl-3,5...	206	C15H26	062337-96-6	55
3		1,3,3-Trimethyl-2-hydroxymethyl-...	222	C15H26O	1000144-10-7	38
4		.gamma.-Neoclovene	204	C15H24	1000156-11-7	30
5		Solavetivone	218	C15H22O	054878-25-0	30



Data Path : Z:\HPCHEM1\BNA\_M\DATA\BM122617\  
Data File : BM013531.D  
Acq On : 26 Dec 2017 13:04  
Operator : SJ/JU  
Sample : I7046-01  
Misc :  
ALS Vial : 6 Sample Multiplier: 1

Instrument :  
BNA\_M  
ClientSampleId :  
C0FL1

Quant Method : Z:\HPCHEM1\BNA\_M\METHODS\SOM-EPA-BM113017.M  
Quant Title : SVOA CALIBRATION

TIC Library : C:\DATABASE\NIST11.L  
TIC Integration Parameters: LSCINT.P

TIC Top Hit name	RT	EstConc	Units	Response	--Internal Standard--			
					#	RT	Resp	Conc
n-Hexadecanoic acid	17.96	3.8	ng/ul	432369	4	17.06	2271340	20.0
Octadecanoic acid	19.25	2.2	ng/ul	240912	5	21.25	2162440	20.0
Trichloroacetic a...	20.97	3.0	ng/ul	325231	5	21.25	2162440	20.0
(DEL) Alkane: Str...	22.80	2.1	ng/ul	197020	6	23.47	1885040	20.0
(DEL) Alkane: Str...	24.00	2.5	ng/ul	231884	6	23.47	1885040	20.0
Hop-22(29)-en-3.b...	27.73	7.6	ng/ul	716942	6	23.47	1885040	20.0