

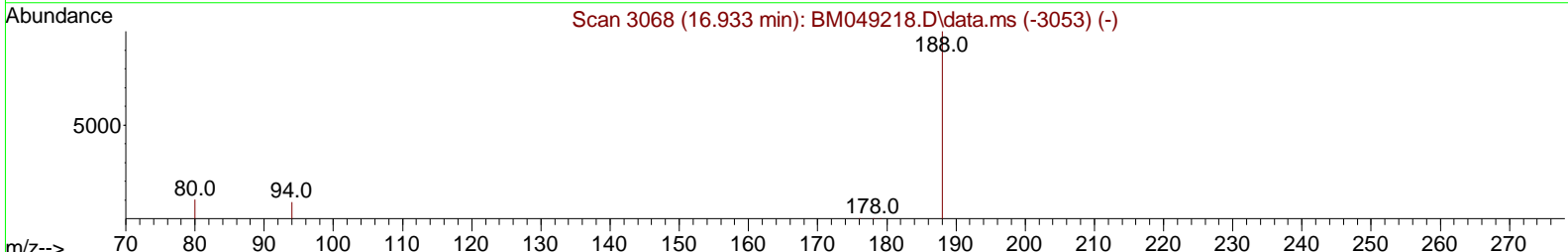
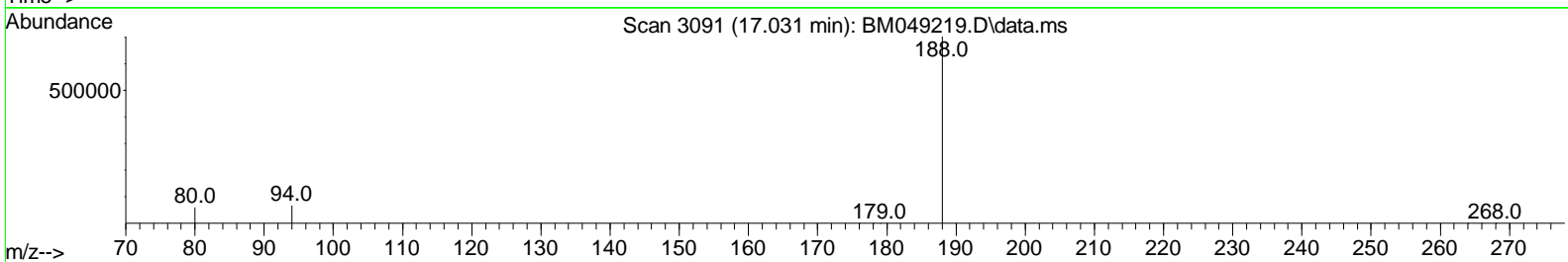
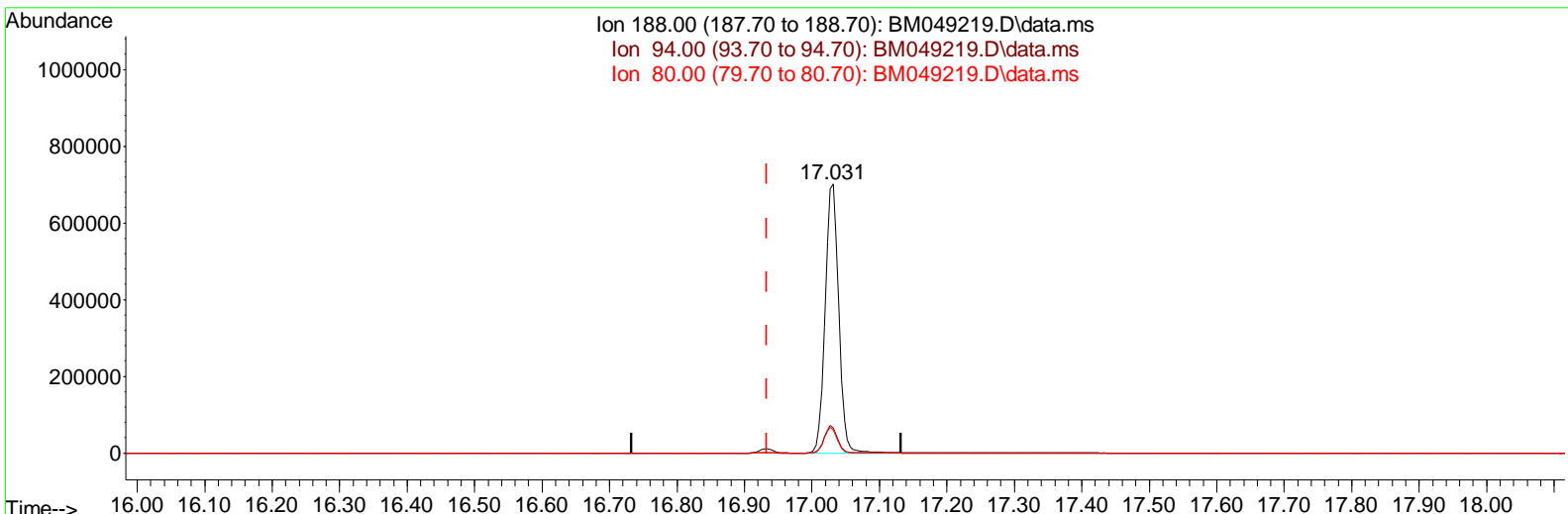
Data Path : Z:\svoasrv\HPCHEM1\BNA_M\Data\BM122624\
 Data File : BM049219.D
 Acq On : 26 Dec 2024 10:43
 Operator : RC/JU
 Sample : PB165752BL
 Misc :
 ALS Vial : 3 Sample Multiplier: 1

Instrument :
 BNA_M
ClientSampleId :
 SBLK752

Manual IntegrationsAPPROVED

Reviewed By :Jagrut Upadhyay 12/27/2024
 Supervised By :mohammad ahmed 12/30/2024

Quant Time: Dec 26 22:47:43 2024
 Quant Method : Z:\svoasrv\HPCHEM1\BNA_M\Methods\SFAM-EPA-SIM-BM121824.M
 Quant Title : ASP BNA STANDARDS FOR 5 POINT CALIBRATION
 QLast Update : Thu Dec 26 11:35:38 2024
 Response via : Initial Calibration



TIC: BM049219.D\data.ms

(13) Phenanthrene-d10 (I)

17.031min (+ 0.098) 0.40 ng/ul

response 973774

Ion	Exp%	Act%
188.00	100.00	100.00
94.00	9.80	9.41
80.00	10.70	8.61
0.00	0.00	0.00

Data Path : Z:\svoasrv\HPCHEM1\BNA_M\Data\BM122624\
 Data File : BM049219.D
 Acq On : 26 Dec 2024 10:43
 Operator : RC/JU
 Sample : PB165752BL
 Misc :
 ALS Vial : 3 Sample Multiplier: 1

Instrument :

BNA_M

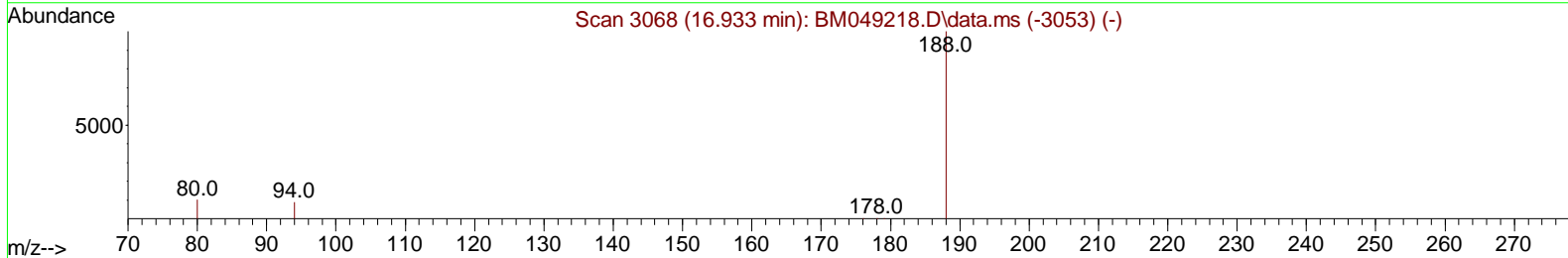
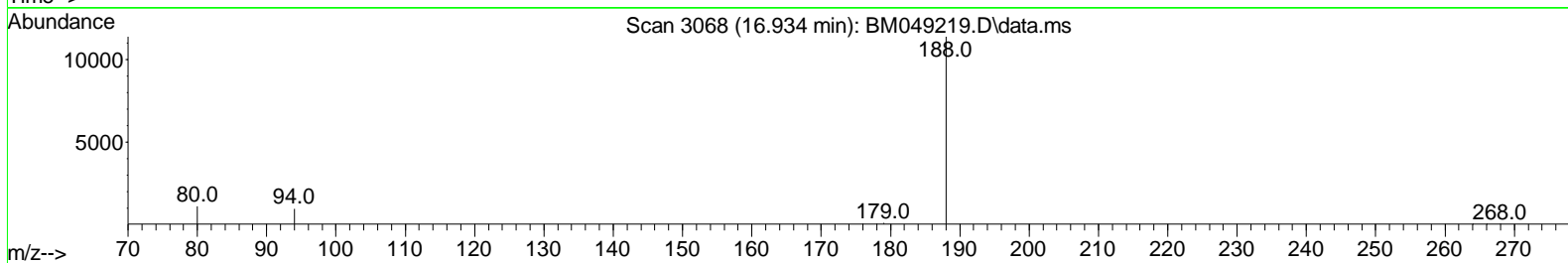
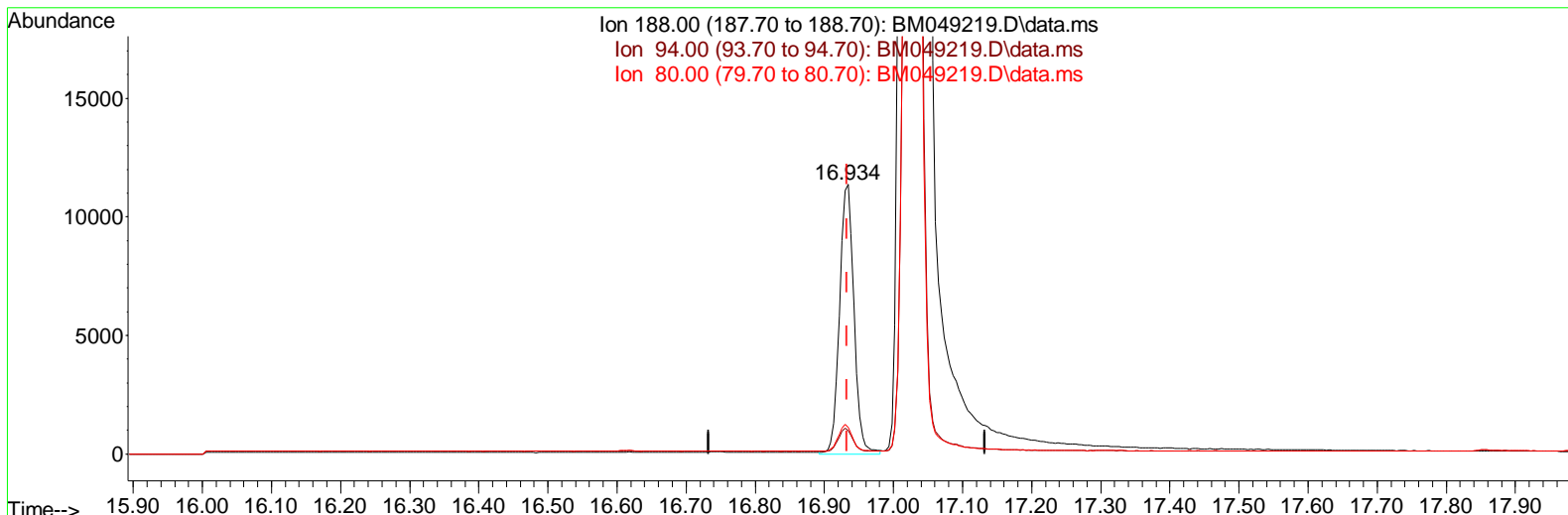
ClientSampleId :

SBLK752

Manual Integrations APPROVED

Quant Time: Dec 26 22:47:43 2024
 Quant Method : Z:\svoasrv\HPCHEM1\BNA_M\Methods\SFAM-EPA-SIM-BM121824.M
 Quant Title : ASP BNA STANDARDS FOR 5 POINT CALIBRATION
 QLast Update : Thu Dec 26 11:35:38 2024
 Response via : Initial Calibration

Reviewed By :Jagrut Upadhyay 12/27/2024
 Supervised By :mohammad ahmed 12/30/2024



TIC: BM049219.D\data.ms

(13) Phenanthrene-d10 (I)

16.934min (+ 0.001) 0.40 ng/ul m

response 16457

Ion	Exp%	Act%
188.00	100.00	100.00
94.00	9.80	8.64
80.00	10.70	9.87
0.00	0.00	0.00

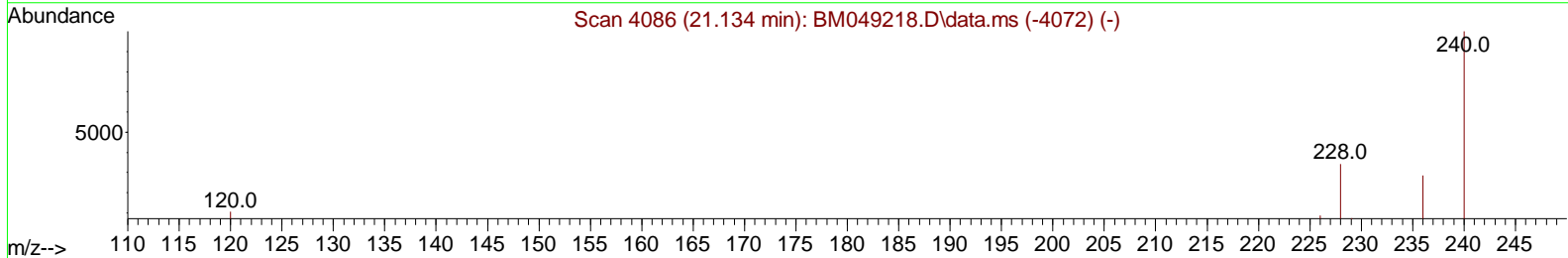
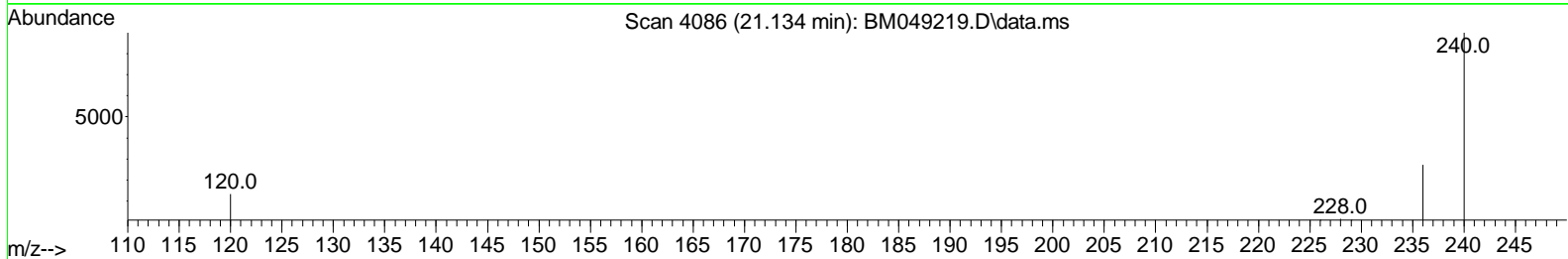
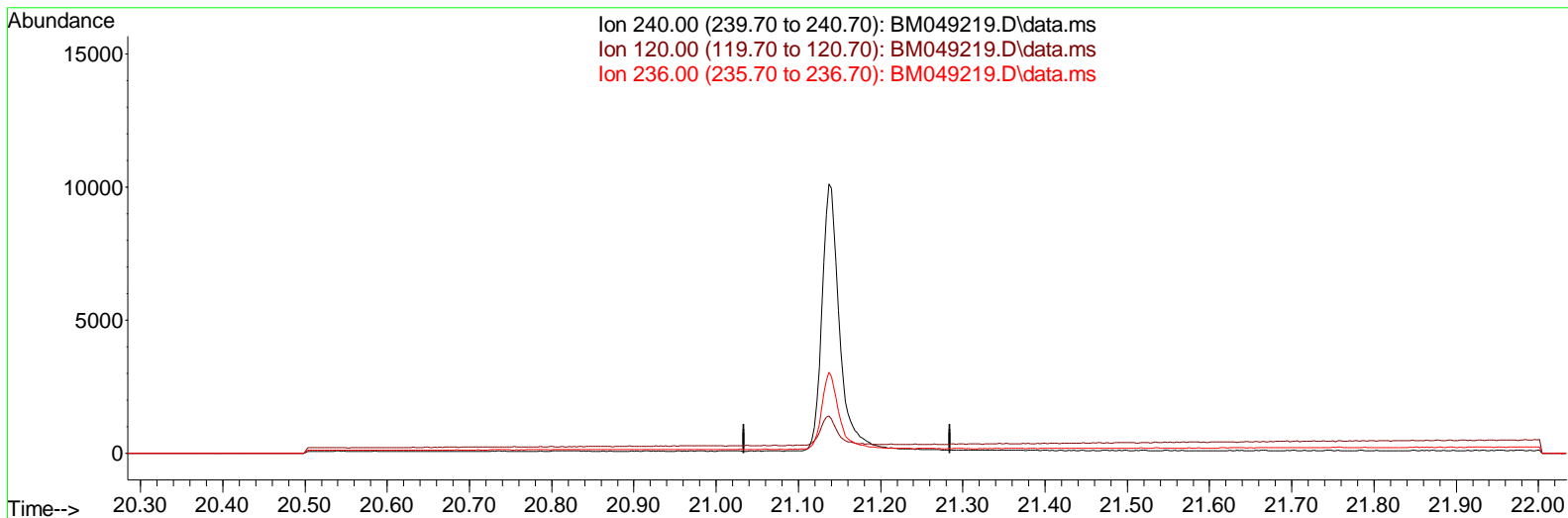
Data Path : Z:\svoasrv\HPCHEM1\BNA_M\Data\BM122624\
 Data File : BM049219.D
 Acq On : 26 Dec 2024 10:43
 Operator : RC/JU
 Sample : PB165752BL
 Misc :
 ALS Vial : 3 Sample Multiplier: 1

Instrument :
 BNA_M
 ClientSampleId :
 SBLK752

Manual Integrations APPROVED

Reviewed By : Jagrut Upadhyay 12/27/2024
 Supervised By : mohammad ahmed 12/30/2024

Quant Time: Dec 26 22:47:43 2024
 Quant Method : Z:\svoasrv\HPCHEM1\BNA_M\Methods\SFAM-EPA-SIM-BM121824.M
 Quant Title : ASP BNA STANDARDS FOR 5 POINT CALIBRATION
 QLast Update : Thu Dec 26 11:35:38 2024
 Response via : Initial Calibration



TIC: BM049219.D\data.ms

(17) Chrysene-d12

21.134min (-21.134) 0.00 ng/ul

response 0

Ion	Exp%	Act%
240.00	100.00	0.00
120.00	14.50	0.00#
236.00	29.80	0.00#
0.00	0.00	0.00

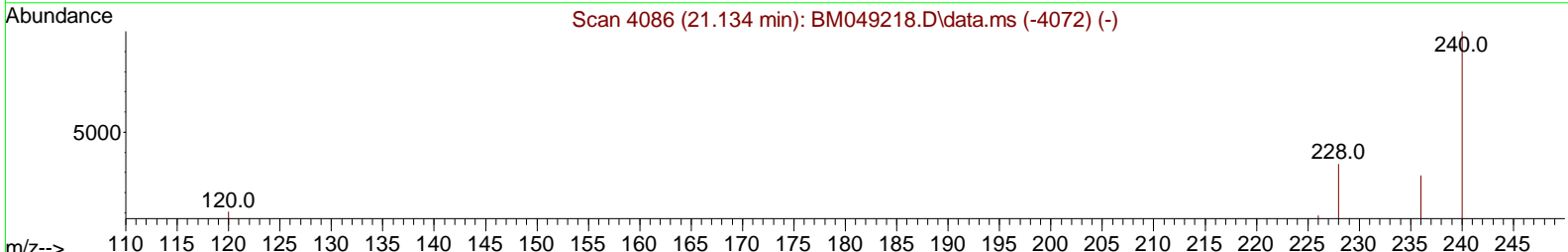
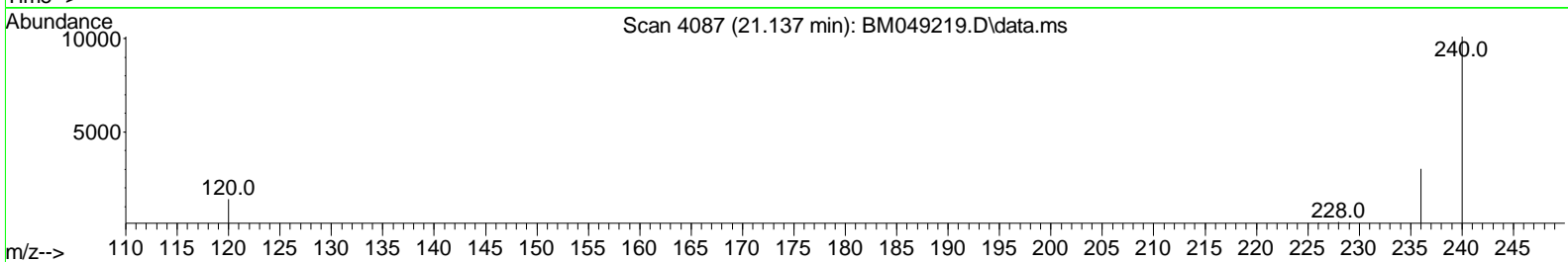
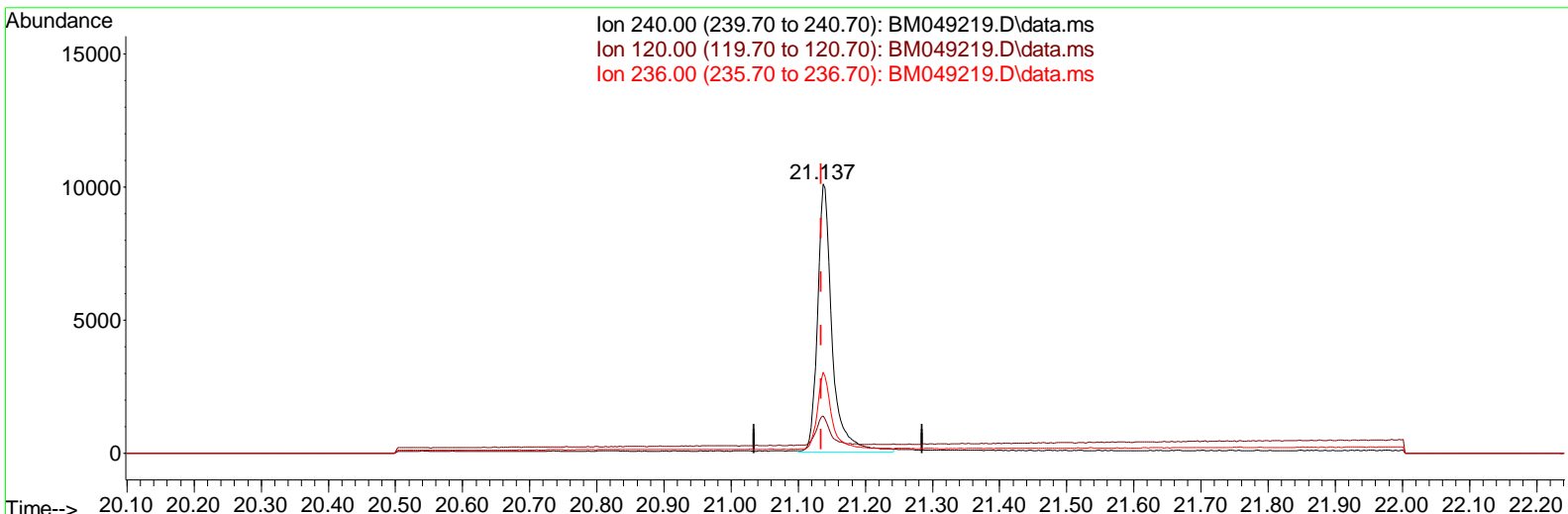
Data Path : Z:\svoasrv\HPCHEM1\BNA_M\Data\BM122624\
 Data File : BM049219.D
 Acq On : 26 Dec 2024 10:43
 Operator : RC/JU
 Sample : PB165752BL
 Misc :
 ALS Vial : 3 Sample Multiplier: 1

Instrument :
 BNA_M
ClientSampleId :
 SBLK752

Manual Integrations APPROVED

Reviewed By :Jagrut Upadhyay 12/27/2024
 Supervised By :mohammad ahmed 12/30/2024

Quant Time: Dec 26 22:47:43 2024
 Quant Method : Z:\svoasrv\HPCHEM1\BNA_M\Methods\SFAM-EPA-SIM-BM121824.M
 Quant Title : ASP BNA STANDARDS FOR 5 POINT CALIBRATION
 QLast Update : Thu Dec 26 11:35:38 2024
 Response via : Initial Calibration



TIC: BM049219.D\data.ms

(17) Chrysene-d12

21.137min (+ 0.002) 0.40 ng/ul m

response 15389

Ion	Exp%	Act%
240.00	100.00	100.00
120.00	14.50	13.71
236.00	29.80	30.01
0.00	0.00	0.00

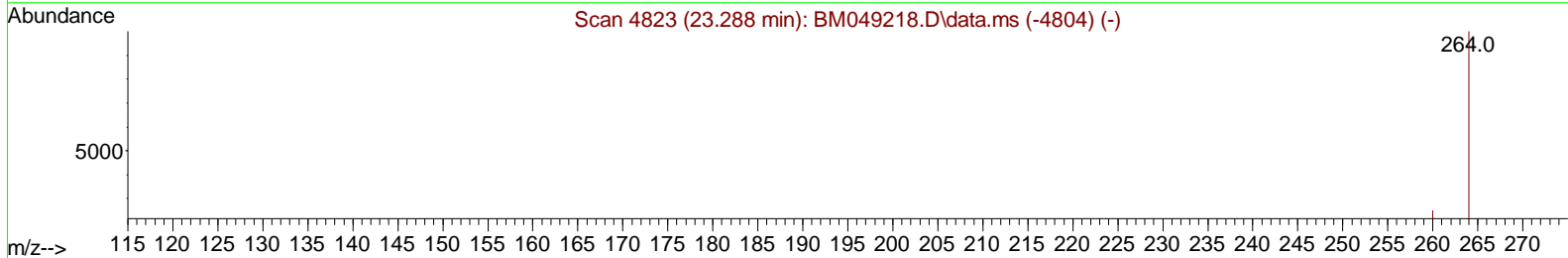
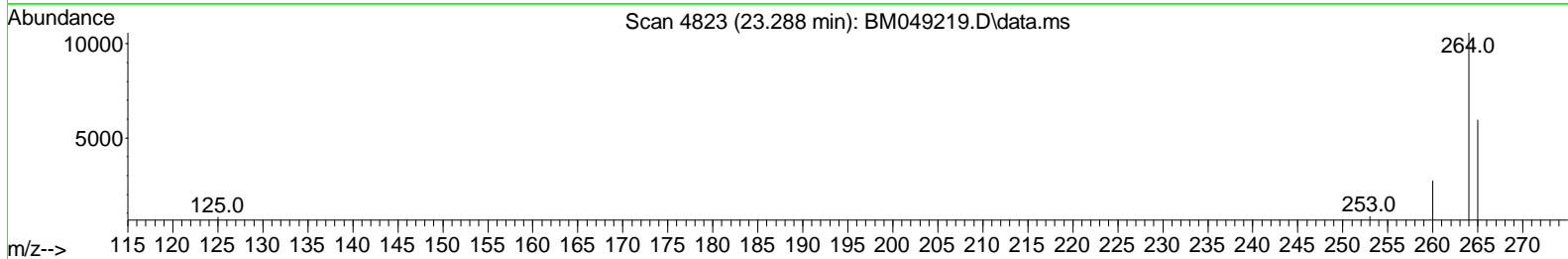
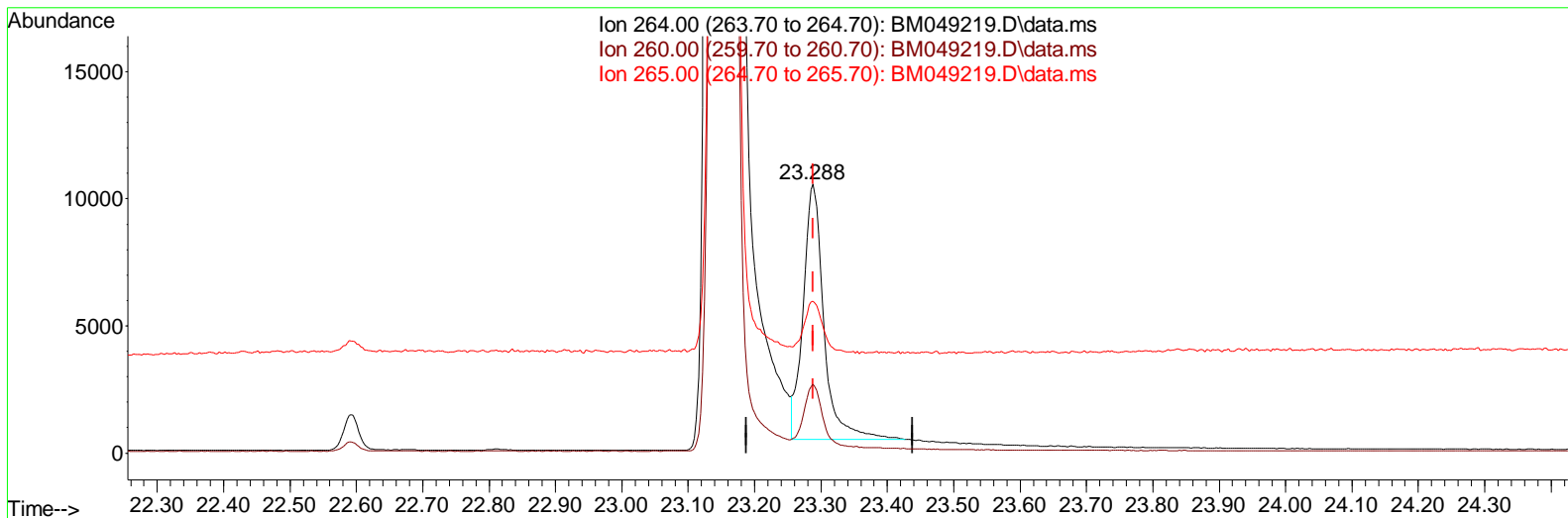
Data Path : Z:\svoasrv\HPCHEM1\BNA_M\Data\BM122624\
 Data File : BM049219.D
 Acq On : 26 Dec 2024 10:43
 Operator : RC/JU
 Sample : PB165752BL
 Misc :
 ALS Vial : 3 Sample Multiplier: 1

Instrument :
 BNA_M
 ClientSampleId :
 SBLK752

Manual Integrations APPROVED

Quant Time: Dec 26 22:47:43 2024
 Quant Method : Z:\svoasrv\HPCHEM1\BNA_M\Methods\SFAM-EPA-SIM-BM121824.M
 Quant Title : ASP BNA STANDARDS FOR 5 POINT CALIBRATION
 QLast Update : Thu Dec 26 11:35:38 2024
 Response via : Initial Calibration

Reviewed By :Jagrut Upadhyay 12/27/2024
 Supervised By :mohammad ahmed 12/30/2024



TIC: BM049219.D\data.ms

(23) Perylene-d12 (I)

23.288min (-0.000) 0.40 ng/ul

response	21913	
Ion	Exp%	Act%
264.00	100.00	100.00
260.00	25.80	25.67
265.00	78.30	56.52#
0.00	0.00	0.00

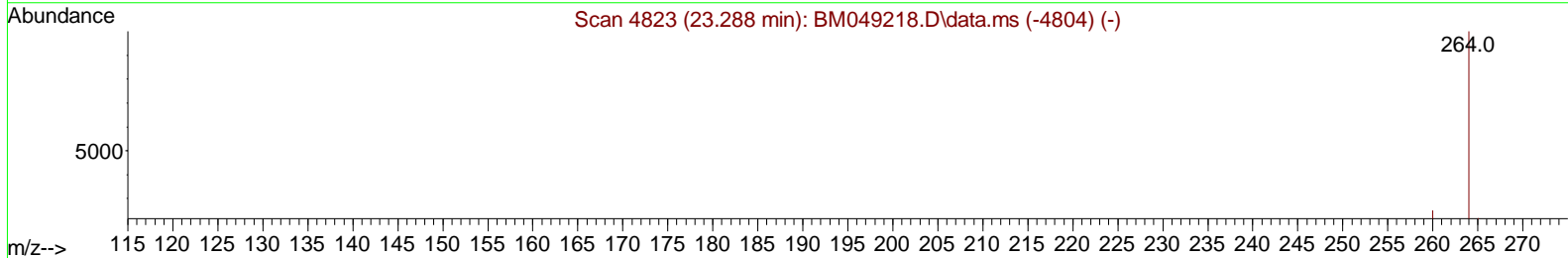
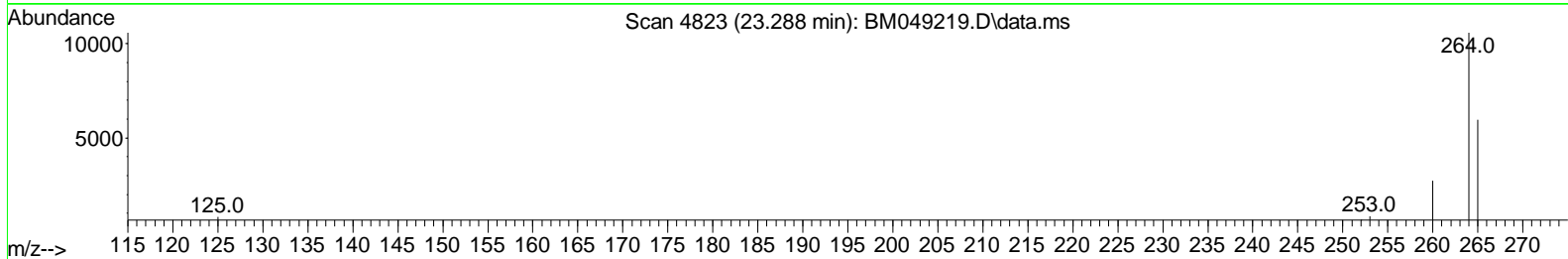
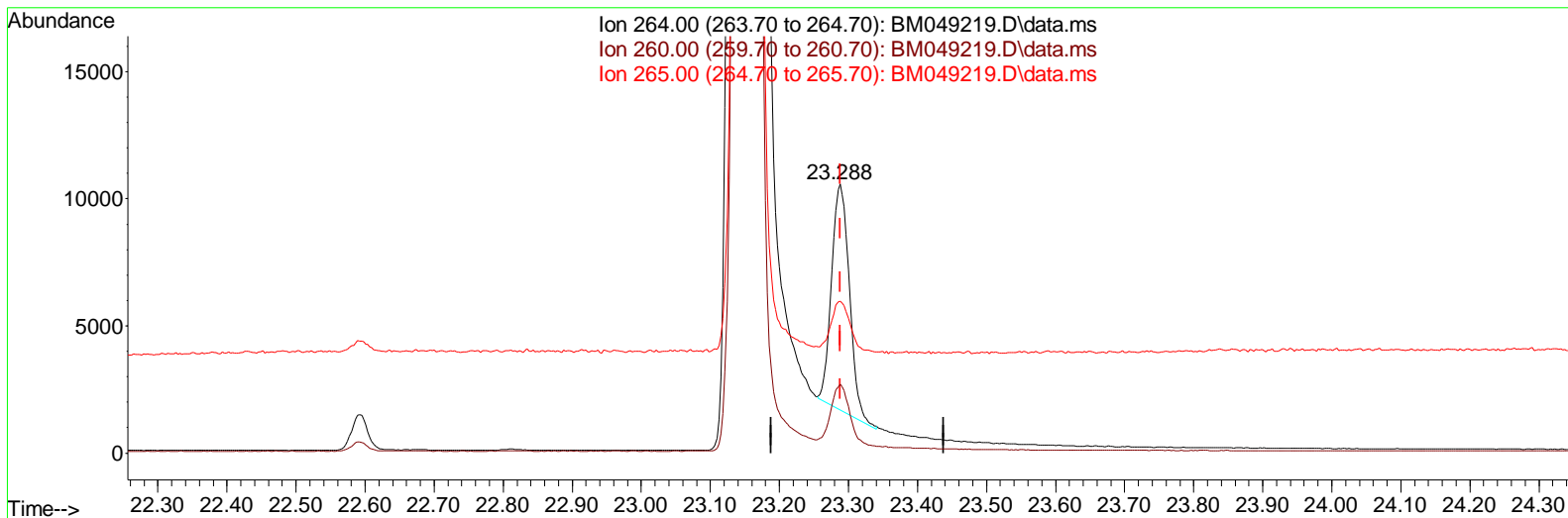
Data Path : Z:\svoasrv\HPCHEM1\BNA_M\Data\BM122624\
 Data File : BM049219.D
 Acq On : 26 Dec 2024 10:43
 Operator : RC/JU
 Sample : PB165752BL
 Misc :
 ALS Vial : 3 Sample Multiplier: 1

Instrument :
 BNA_M
ClientSampleId :
 SBLK752

Manual IntegrationsAPPROVED

Reviewed By :Jagrut Upadhyay 12/27/2024
 Supervised By :mohammad ahmed 12/30/2024

Quant Time: Dec 26 22:47:43 2024
 Quant Method : Z:\svoasrv\HPCHEM1\BNA_M\Methods\SFAM-EPA-SIM-BM121824.M
 Quant Title : ASP BNA STANDARDS FOR 5 POINT CALIBRATION
 QLast Update : Thu Dec 26 11:35:38 2024
 Response via : Initial Calibration



TIC: BM049219.D\data.ms

(23) Perylene-d12 (I)

23.288min (-0.000) 0.40 ng/ul m

response 15881

Ion	Exp%	Act%
264.00	100.00	100.00
260.00	25.80	25.67
265.00	78.30	56.52#
0.00	0.00	0.00

Data Path : Z:\svoasrv\HPCHEM1\BNA_M\Data\BM122624\
 Data File : BM049219.D
 Acq On : 26 Dec 2024 10:43
 Operator : RC/JU
 Sample : PB165752BL
 Misc :
 ALS Vial : 3 Sample Multiplier: 1

Instrument :
 BNA_M
ClientSampleId :
 SBLK752

Manual IntegrationsAPPROVED

Reviewed By :Jagrut Upadhyay 12/27/2024
 Supervised By :mohammad ahmed 12/30/2024

Quant Time: Dec 26 22:47:43 2024
 Quant Method : Z:\svoasrv\HPCHEM1\BNA_M\Methods\SFAM-EPA-SIM-BM121824.M
 Quant Title : ASP BNA STANDARDS FOR 5 POINT CALIBRATION
 QLast Update : Thu Dec 26 11:35:38 2024
 Response via : Initial Calibration

Compound	R.T.	QI on	Response	Conc	Units	Dev(Min)
Internal Standards						
1) 1,4-Dichlorobenzene-d4	7.543	152	4328	0.400	ng/ul	0.00
4) Naphthalene-d8	10.304	136	12502	0.400	ng/ul	0.00
9) Acenaphthene-d10	14.183	164	7017	0.400	ng/ul	0.00
13) Phenanthrene-d10	16.934	188	16457m	0.400	ng/ul	0.00
17) Chrysene-d12	21.137	240	15389m	0.400	ng/ul	0.00
23) Perylene-d12	23.288	264	15881m	0.400	ng/ul	0.00
System Monitoring Compounds						
3) 1,4-Dioxane-d8	3.138	96	28627	5.735	ng/ul	0.00
6) 2-Methylnaphthalene-d10	11.910	152	4919	0.293	ng/ul	0.00
18) Fluoranthene-d10	18.969	212	11547	0.264	ng/ul	0.00

Target Compounds Qvalue

(#) = qualifier out of range (m) = manual integration (+) = signals summed

Data Path : Z:\svoasrv\HPCHEM1\BNA_M\Data\BM122624\
 Data File : BM049219.D
 Acq On : 26 Dec 2024 10:43
 Operator : RC/JU
 Sample : PB165752BL
 Misc :
 ALS Vial : 3 Sample Multiplier: 1

Instrument :
 BNA_M
ClientSampleId :
 SBLK752

Manual Integrations APPROVED

Reviewed By :Jagrut Upadhyay 12/27/2024
 Supervised By :mohammad ahmed 12/30/2024

Quant Time: Dec 26 22:47:43 2024
 Quant Method : Z:\svoasrv\HPCHEM1\BNA_M\Methods\SFAM-EPA-SIM-BM121824.M
 Quant Title : ASP BNA STANDARDS FOR 5 POINT CALIBRATION
 QLast Update : Thu Dec 26 11:35:38 2024
 Response via : Initial Calibration

