

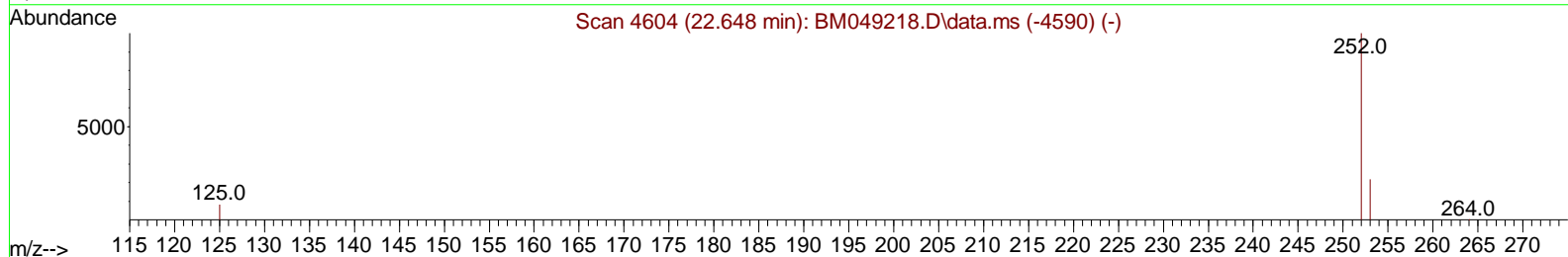
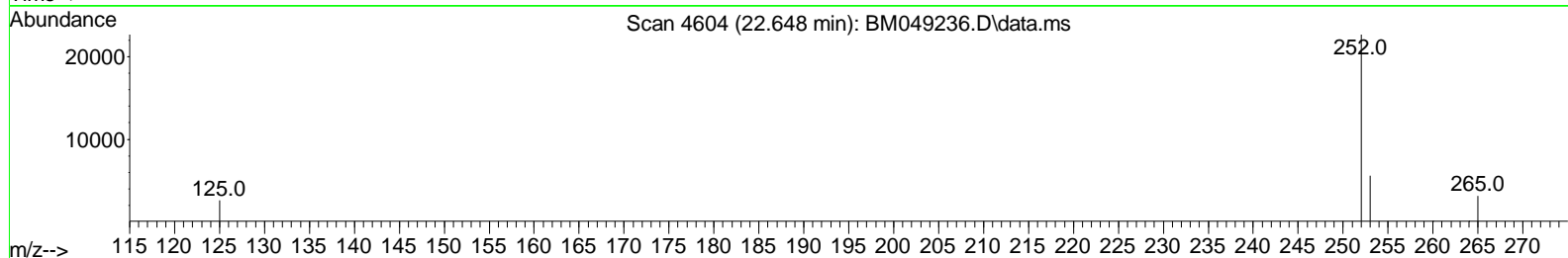
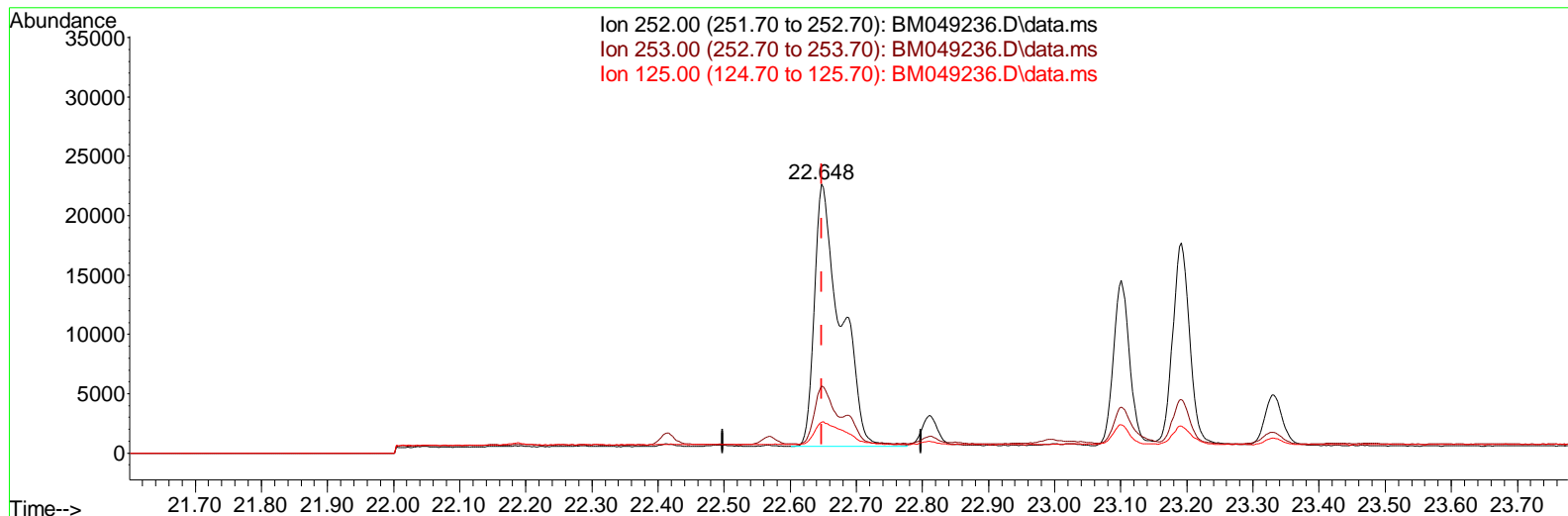
Data Path : Z:\svoasrv\HPCHEM1\BNA_M\Data\BM122624\
 Data File : BM049236.D
 Acq On : 26 Dec 2024 21:44
 Operator : RC/JU
 Sample : P5333-15DL 5X
 Misc :
 ALS Vial : 21 Sample Multiplier: 1

Instrument :
 BNA_M
 ClientSampleId :
 E2917DL

Manual Integrations APPROVED

Quant Time: Dec 26 22:36:25 2024
 Quant Method : Z:\svoasrv\HPCHEM1\BNA_M\Methods\SFAM-EPA-SIM-BM121824.M
 Quant Title : ASP BNA STANDARDS FOR 5 POINT CALIBRATION
 QLast Update : Thu Dec 26 11:35:38 2024
 Response via : Initial Calibration

Reviewed By : Jagrut Upadhyay 12/27/2024
 Supervised By : mohammad ahmed 12/30/2024



TIC: BM049236.D\data.ms

(24) Benzo(b)fluoranthene

22.648min (-0.000) 0.93 ng/ul

response 60890

Ion	Exp%	Act%
252.00	100.00	100.00
253.00	26.30	24.87
125.00	15.40	11.57
0.00	0.00	0.00

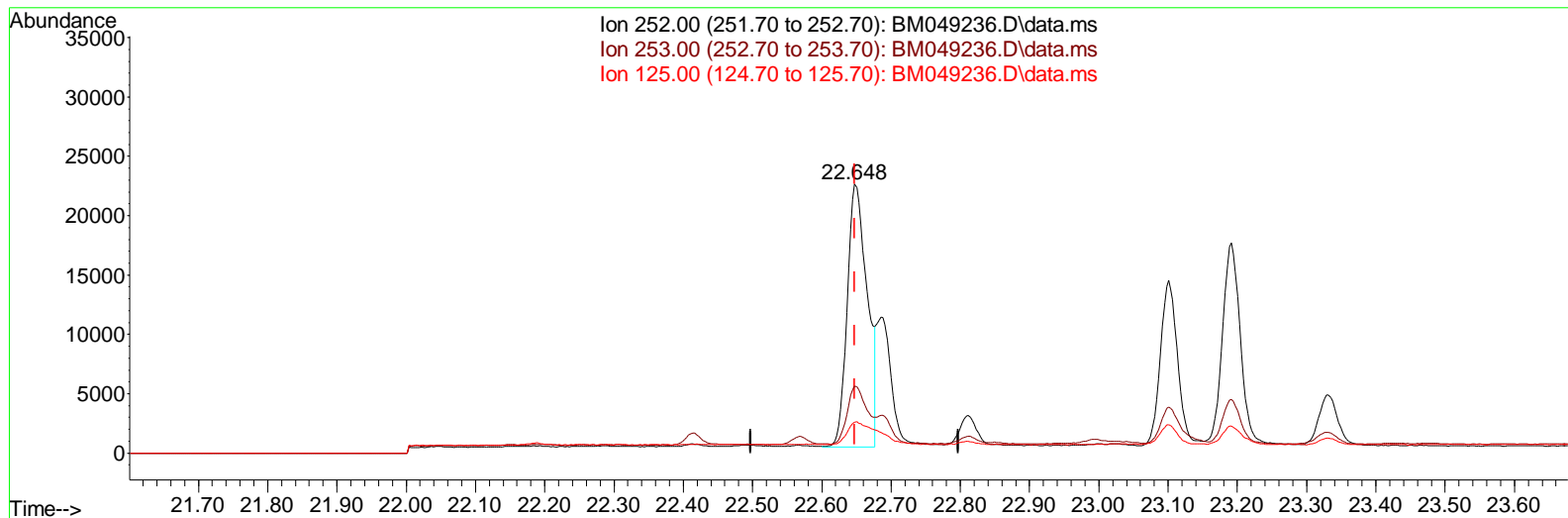
Data Path : Z:\svoasrv\HPCHEM1\BNA_M\Data\BM122624\
 Data File : BM049236.D
 Acq On : 26 Dec 2024 21:44
 Operator : RC/JU
 Sample : P5333-15DL 5X
 Misc :
 ALS Vial : 21 Sample Multiplier: 1

Instrument :
 BNA_M
 ClientSampleId :
 E2917DL

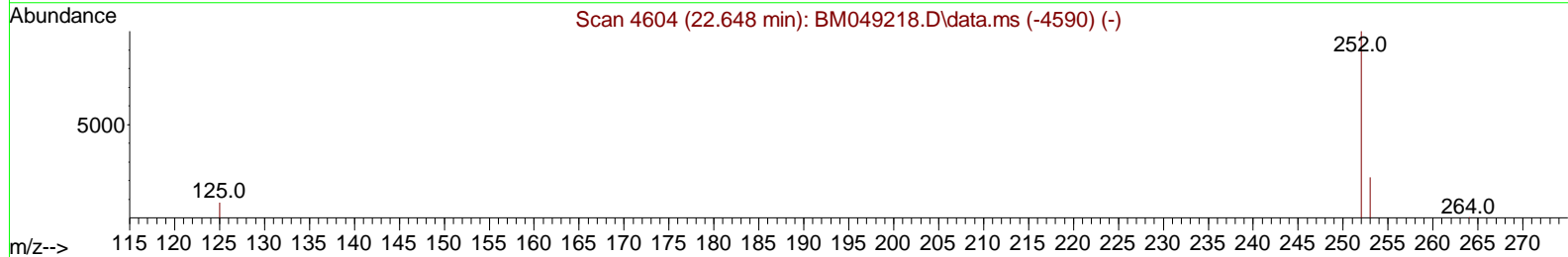
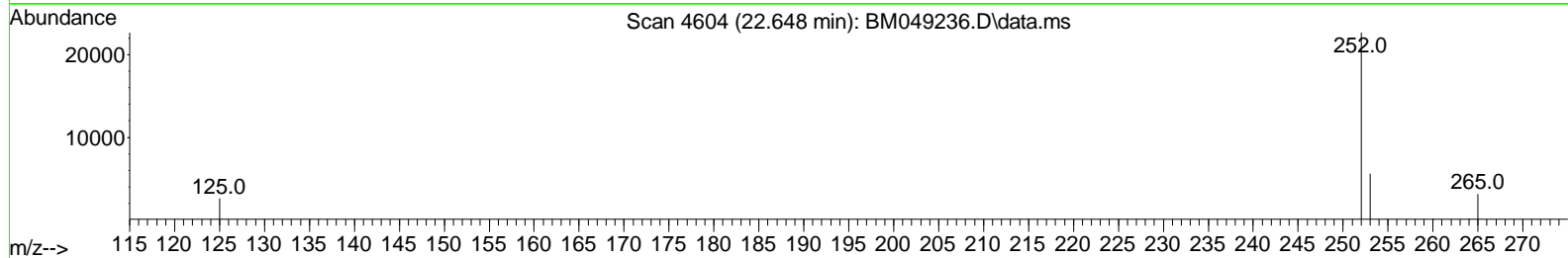
Manual Integrations APPROVED

Quant Time: Dec 26 22:36:25 2024
 Quant Method : Z:\svoasrv\HPCHEM1\BNA_M\Methods\SFAM-EPA-SIM-BM121824.M
 Quant Title : ASP BNA STANDARDS FOR 5 POINT CALIBRATION
 QLast Update : Thu Dec 26 11:35:38 2024
 Response via : Initial Calibration

Reviewed By : Jagrut Upadhyay 12/27/2024
 Supervised By : mohammad ahmed 12/30/2024



Ion 252.00 (251.70 to 252.70): BM049236.D\data.ms
 Ion 253.00 (252.70 to 253.70): BM049236.D\data.ms
 Ion 125.00 (124.70 to 125.70): BM049236.D\data.ms



TIC: BM049236.D\data.ms

(24) Benzo(b)fluoranthene

22.648min (-0.000) 0.68 ng/ul m

response	44862
Ion	Exp% Act%
252.00	100.00 100.00
253.00	26.30 24.87
125.00	15.40 11.57
0.00	0.00 0.00

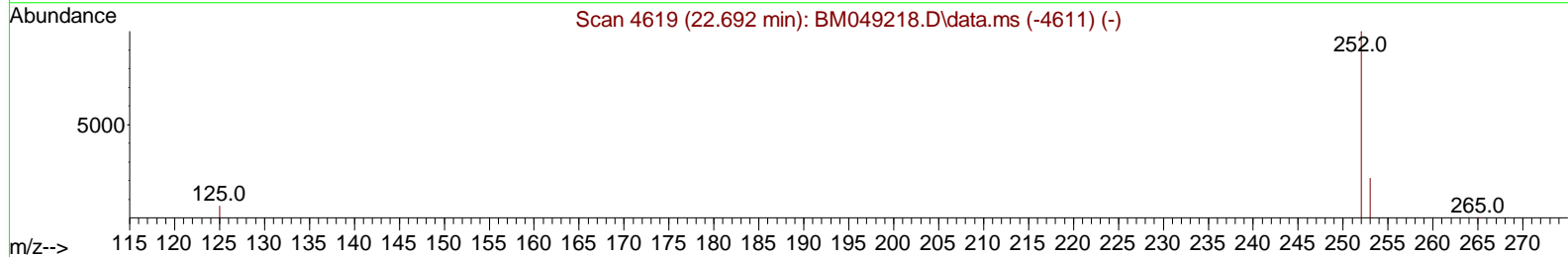
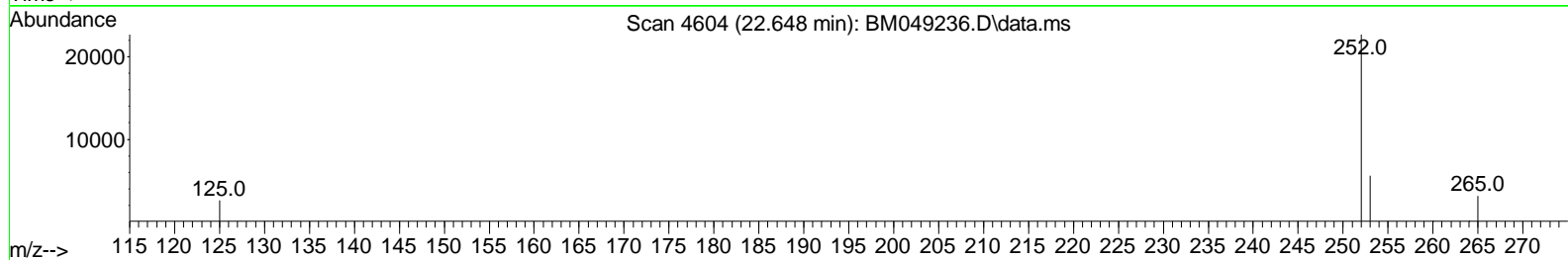
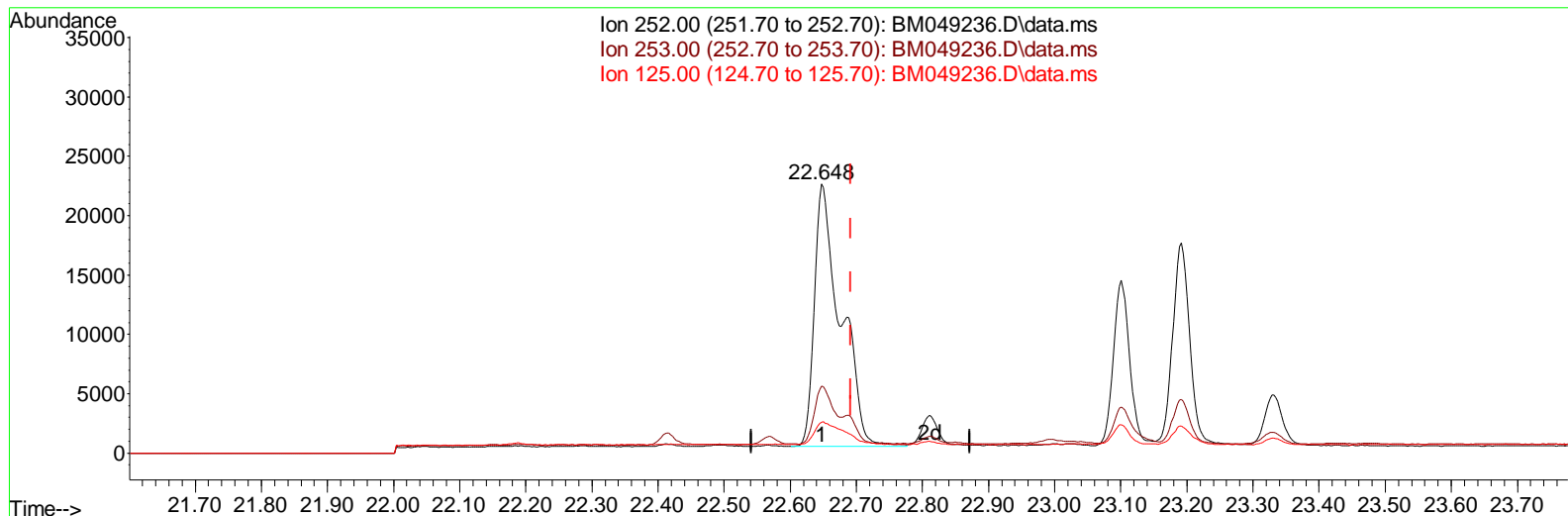
Data Path : Z:\svoasrv\HPCHEM1\BNA_M\Data\BM122624\
 Data File : BM049236.D
 Acq On : 26 Dec 2024 21:44
 Operator : RC/JU
 Sample : P5333-15DL 5X
 Misc :
 ALS Vial : 21 Sample Multiplier: 1

Instrument :
 BNA_M
 ClientSampleId :
 E2917DL

Manual Integrations APPROVED

Quant Time: Dec 26 22:36:25 2024
 Quant Method : Z:\svoasrv\HPCHEM1\BNA_M\Methods\SFAM-EPA-SIM-BM121824.M
 Quant Title : ASP BNA STANDARDS FOR 5 POINT CALIBRATION
 QLast Update : Thu Dec 26 11:35:38 2024
 Response via : Initial Calibration

Reviewed By : Jagrut Upadhyay 12/27/2024
 Supervised By : mohammad ahmed 12/30/2024



TIC: BM049236.D\data.ms

(25) Benzo(k)fluoranthene

22.648min (-0.044) 0.85 ng/ul

response 60890

Ion	Exp%	Act%
252.00	100.00	100.00
253.00	26.60	24.87
125.00	15.70	11.57#
0.00	0.00	0.00

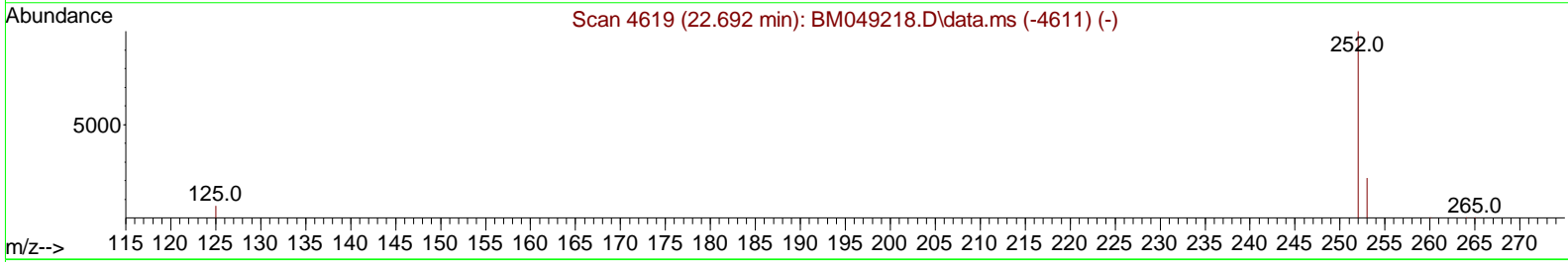
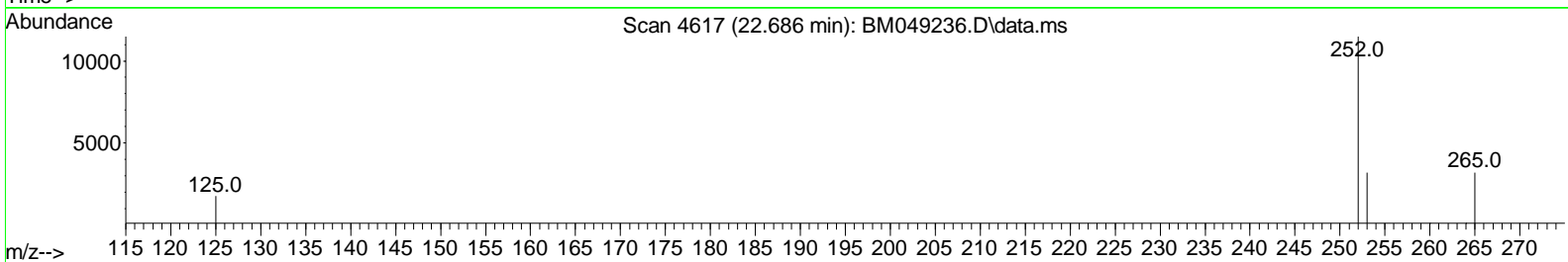
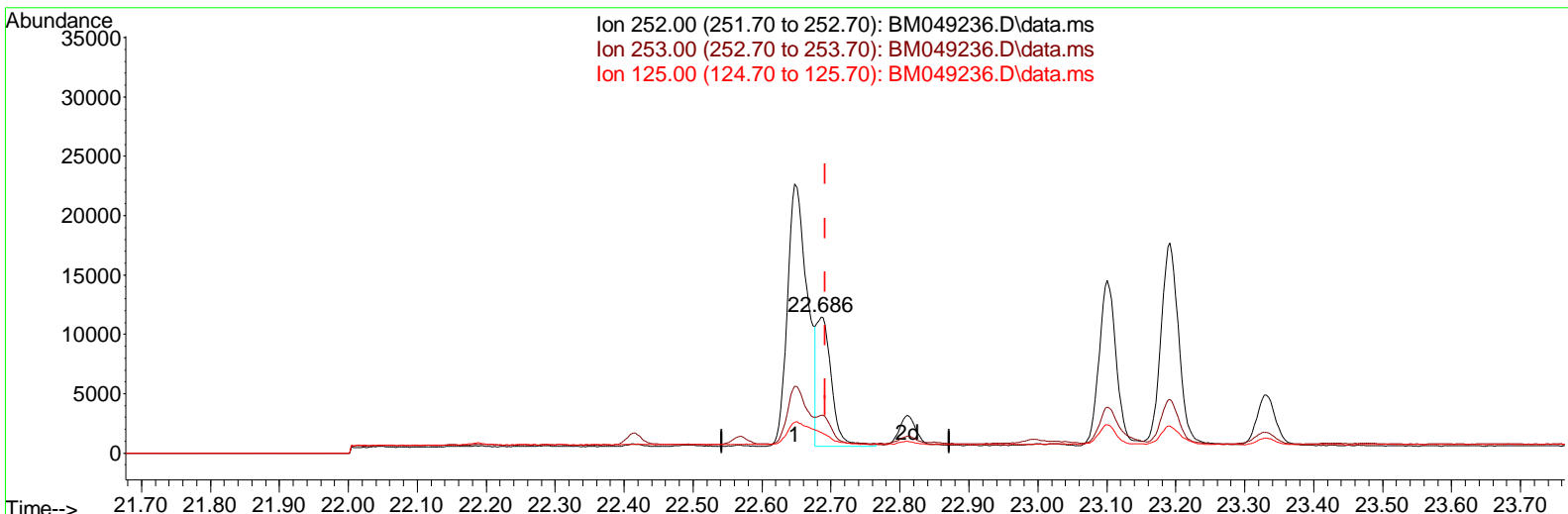
Data Path : Z:\svoasrv\HPCHEM1\BNA_M\Data\BM122624\
 Data File : BM049236.D
 Acq On : 26 Dec 2024 21:44
 Operator : RC/JU
 Sample : P5333-15DL 5X
 Misc :
 ALS Vial : 21 Sample Multiplier: 1

Instrument :
 BNA_M
 ClientSampleId :
 E2917DL

Manual Integrations APPROVED

Quant Time: Dec 26 22:36:25 2024
 Quant Method : Z:\svoasrv\HPCHEM1\BNA_M\Methods\SFAM-EPA-SIM-BM121824.M
 Quant Title : ASP BNA STANDARDS FOR 5 POINT CALIBRATION
 QLast Update : Thu Dec 26 11:35:38 2024
 Response via : Initial Calibration

Reviewed By : Jagrut Upadhyay 12/27/2024
 Supervised By : mohammad ahmed 12/30/2024



TIC: BM049236.D\data.ms

(25) Benzo(k)fluoranthene

22.686min (-0.006) 0.22 ng/ul m

response	16026
Ion	Exp% Act%
252.00	100.00 100.00
253.00	26.60 27.84
125.00	15.70 15.22
0.00	0.00 0.00

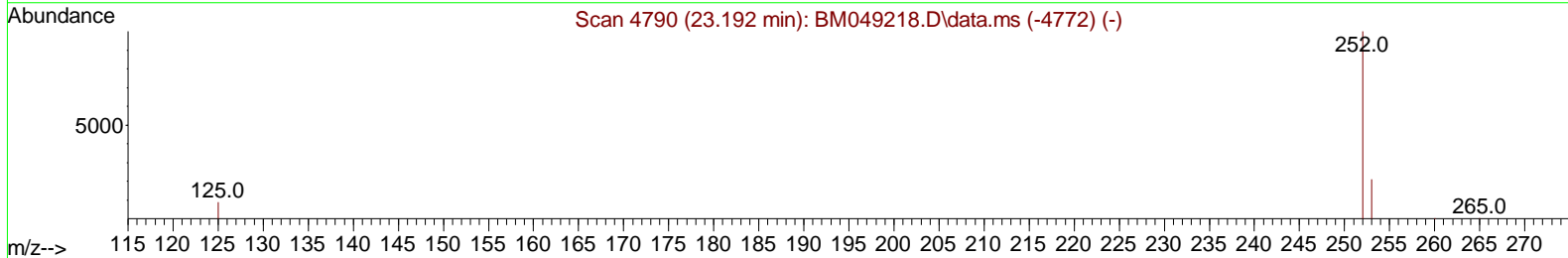
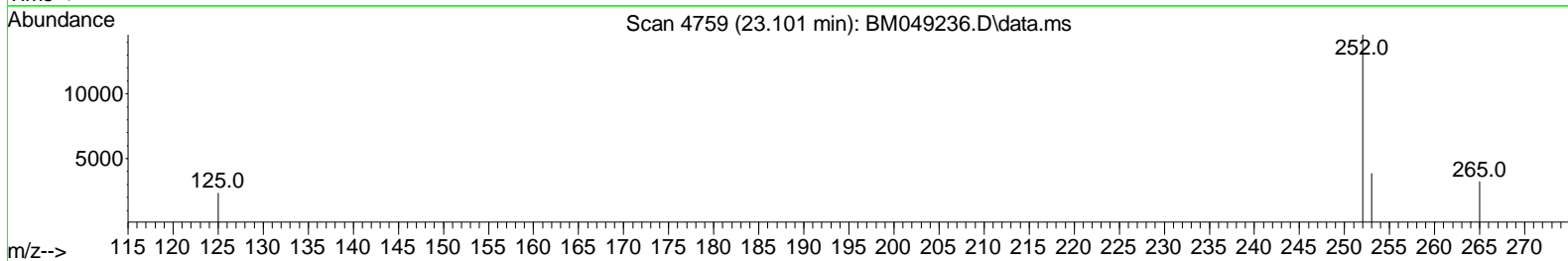
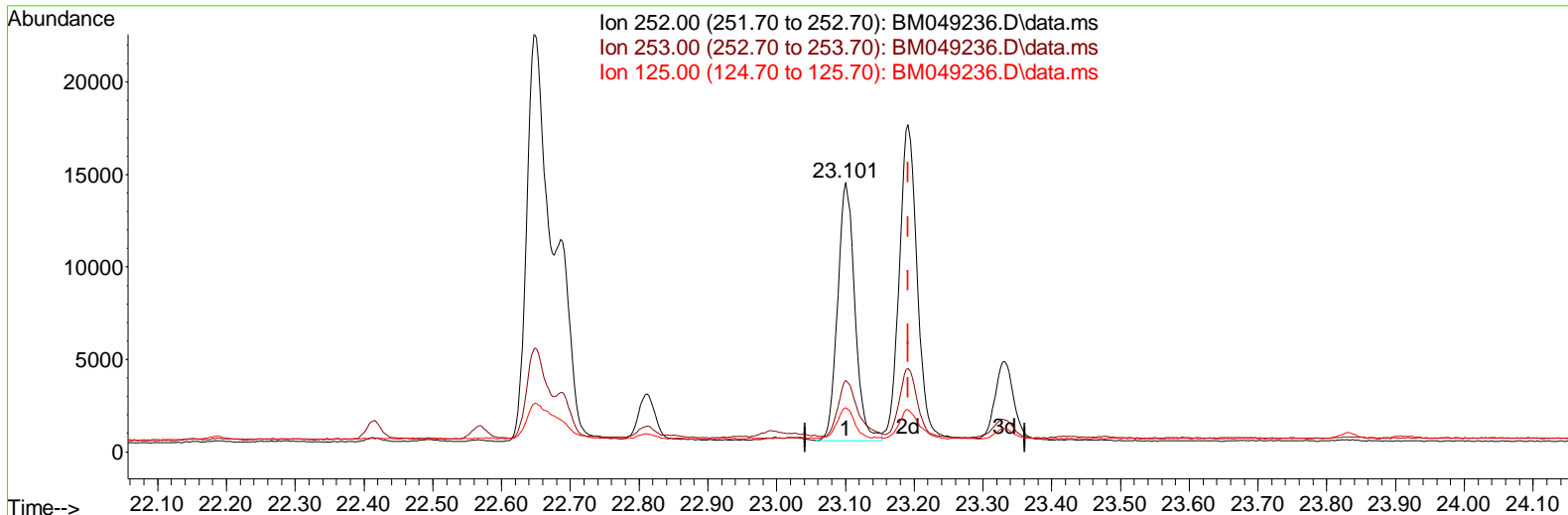
Data Path : Z:\svoasrv\HPCHEM1\BNA_M\Data\BM122624\
 Data File : BM049236.D
 Acq On : 26 Dec 2024 21:44
 Operator : RC/JU
 Sample : P5333-15DL 5X
 Misc :
 ALS Vial : 21 Sample Multiplier: 1

Instrument :
 BNA_M
 ClientSampleId :
 E2917DL

Manual Integrations APPROVED

Quant Time: Dec 26 22:36:25 2024
 Quant Method : Z:\svoasrv\HPCHEM1\BNA_M\Methods\SFAM-EPA-SIM-BM121824.M
 Quant Title : ASP BNA STANDARDS FOR 5 POINT CALIBRATION
 QLast Update : Thu Dec 26 11:35:38 2024
 Response via : Initial Calibration

Reviewed By : Jagrut Upadhyay 12/27/2024
 Supervised By : mohammad ahmed 12/30/2024



TIC: BM049236.D\data.ms

(26) Benzo(a)pyrene (C)

23.101min (-0.091) 0.39 ng/ul

response 24346

Ion	Exp%	Act%
252.00	100.00	100.00
253.00	28.00	26.62
125.00	18.50	16.32
0.00	0.00	0.00

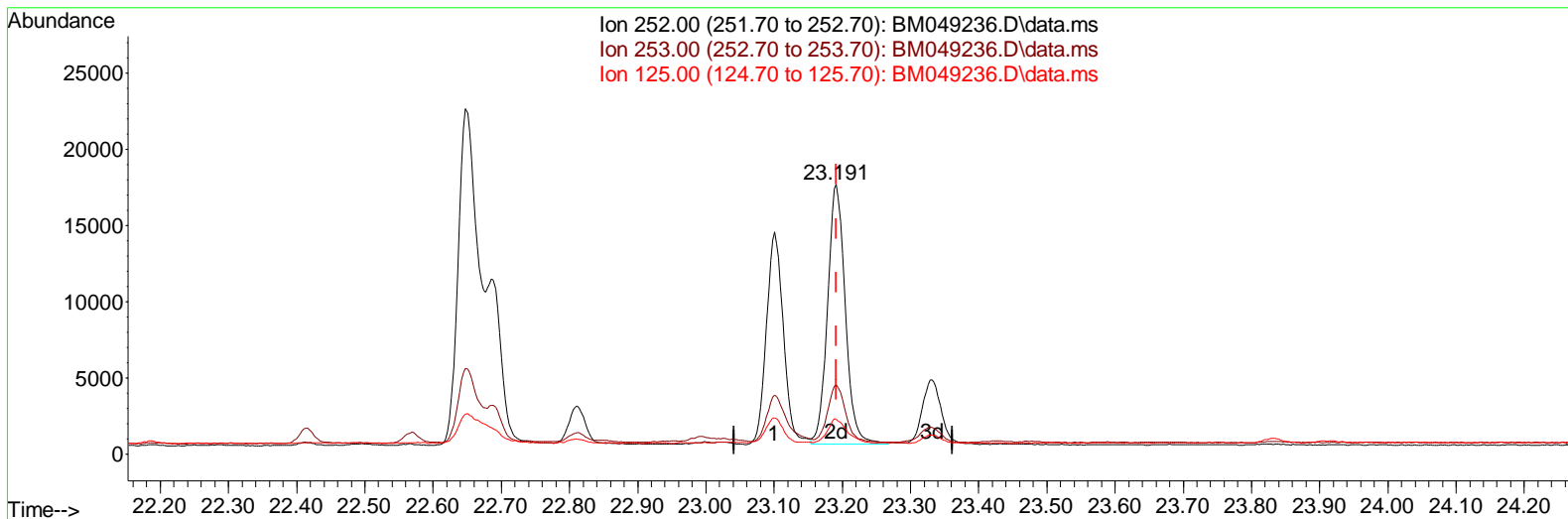
Data Path : Z:\svoasrv\HPCHEM1\BNA_M\Data\BM122624\
 Data File : BM049236.D
 Acq On : 26 Dec 2024 21:44
 Operator : RC/JU
 Sample : P5333-15DL 5X
 Misc :
 ALS Vial : 21 Sample Multiplier: 1

Instrument :
 BNA_M
 ClientSampleId :
 E2917DL

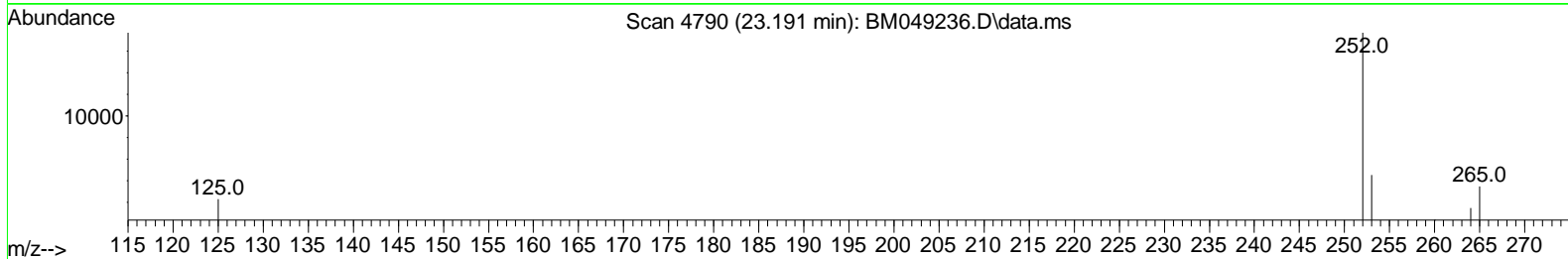
Manual Integrations APPROVED

Quant Time: Dec 26 22:36:25 2024
 Quant Method : Z:\svoasrv\HPCHEM1\BNA_M\Methods\SFAM-EPA-SIM-BM121824.M
 Quant Title : ASP BNA STANDARDS FOR 5 POINT CALIBRATION
 QLast Update : Thu Dec 26 11:35:38 2024
 Response via : Initial Calibration

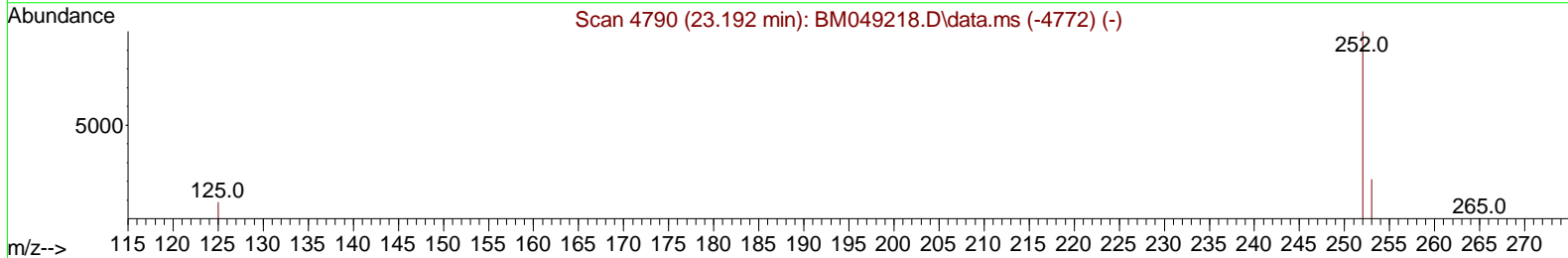
Reviewed By :Jagrut Upadhyay 12/27/2024
 Supervised By :mohammad ahmed 12/30/2024



Ion 252.00 (251.70 to 252.70): BM049236.D\data.ms
 Ion 253.00 (252.70 to 253.70): BM049236.D\data.ms
 Ion 125.00 (124.70 to 125.70): BM049236.D\data.ms



Scan 4790 (23.192 min): BM049218.D\data.ms (-4772) (-)



TIC: BM049236.D\data.ms

(26) Benzo(a)pyrene (C)

23.191min (-0.000) 0.49 ng/ul m

response 30777

Ion	Exp%	Act%
252.00	100.00	100.00
253.00	28.00	25.60
125.00	18.50	12.98#
0.00	0.00	0.00

Data Path : Z:\svoasrv\HPCHEM1\BNA_M\Data\BM122624\
 Data File : BMO49236.D
 Acq On : 26 Dec 2024 21:44
 Operator : RC/JU
 Sample : P5333-15DL 5X
 Misc :
 ALS Vial : 21 Sample Multiplier: 1

Instrument :
 BNA_M
ClientSampleId :
 E2917DL

Manual Integrations APPROVED

Reviewed By : Jagrut Upadhyay 12/27/2024
 Supervised By : mohammad ahmed 12/30/2024

Quant Time: Dec 26 22:36:25 2024
 Quant Method : Z:\svoasrv\HPCHEM1\BNA_M\Methods\SFAM-EPA-SIM-BM121824.M
 Quant Title : ASP BNA STANDARDS FOR 5 POINT CALIBRATION
 QLast Update : Thu Dec 26 11:35:38 2024
 Response via : Initial Calibration

Compound	R.T.	QI on	Response	Conc	Units	Dev(Min)
Internal Standards						
1) 1,4-Dichlorobenzene-d4	7.543	152	4780	0.400	ng/ul	0.00
4) Naphthalene-d8	10.310	136	14343	0.400	ng/ul	0.00
9) Acenaphthene-d10	14.183	164	8915	0.400	ng/ul	0.00
13) Phenanthrene-d10	16.930	188	20802	0.400	ng/ul	0.00
17) Chrysene-d12	21.134	240	18790	0.400	ng/ul	0.00
23) Perylene-d12	23.285	264	20542	0.400	ng/ul	# 0.00
System Monitoring Compounds						
3) 1,4-Dioxane-d8	3.138	96	3600	0.653	ng/ul	0.00
6) 2-Methylnaphthalene-d10	11.910	152	701	0.036	ng/ul	0.00
18) Fluoranthene-d10	18.965	212	1804	0.034	ng/ul	0.00
Target Compounds						
						Qvalue
5) Naphthalene	10.354	128	2343	0.065	ng/ul #	89
7) 2-Methylnaphthalene	11.987	142	2076	0.091	ng/ul	99
8) 1-Methylnaphthalene	12.207	142	956	0.041	ng/ul	99
10) Acenaphthylene	13.896	152	890	0.024	ng/ul #	74
11) Acenaphthene	14.243	153	581	0.022	ng/ul #	93
12) Fluorene	15.238	166	818	0.027	ng/ul #	91
15) Phenanthrene	16.972	178	23459	0.432	ng/ul	99
16) Anthracene	17.061	178	4660	0.093	ng/ul #	94
19) Fluoranthene	18.997	202	55742	0.820	ng/ul	100
20) Pyrene	19.360	202	54152	0.747	ng/ul	99
21) Benzo(a)anthracene	21.119	228	27656	0.423	ng/ul	97
22) Chrysene	21.169	228	31808	0.453	ng/ul	96
24) Benzo(b)fluoranthene	22.648	252	44862m	0.684	ng/ul	
25) Benzo(k)fluoranthene	22.686	252	16026m	0.223	ng/ul	
26) Benzo(a)pyrene	23.191	252	30777m	0.489	ng/ul	
27) Indeno(1,2,3-cd)pyrene	25.416	276	24046	0.270	ng/ul #	92
28) Di benzo(a,h)anthracene	25.423	278	5848	0.085	ng/ul #	84
29) Benzo(g,h,i)perylene	26.067	276	27183	0.379	ng/ul	98

(#) = qualifier out of range (m) = manual integration (+) = signals summed

Data Path : Z:\svoasrv\HPCHEM1\BNA_M\Data\BM122624\
 Data File : BM049236.D
 Acq On : 26 Dec 2024 21:44
 Operator : RC/JU
 Sample : P5333-15DL 5X
 Misc :
 ALS Vial : 21 Sample Multiplier: 1

Instrument :
 BNA_M
Client Sample Id :
 E2917DL

Manual Integrations APPROVED

Reviewed By :Jagrut Upadhyay 12/27/2024
 Supervised By :mohammad ahmed 12/30/2024

Quant Time: Dec 26 22:36:25 2024
 Quant Method : Z:\svoasrv\HPCHEM1\BNA_M\Methods\SFAM-EPA-SI M-BM121824.M
 Quant Title : ASP BNA STANDARDS FOR 5 POINT CALIBRATION
 QLast Update : Thu Dec 26 11:35:38 2024
 Response via : Initial Calibration

