

Data Path : Z:\svoasrv\HPCHEM1\BNA\_M\Data\BM122724\  
 Data File : BM049255.D  
 Acq On : 27 Dec 2024 15:16  
 Operator : RC/JU  
 Sample : P5324-20  
 Misc :  
 ALS Vial : 14 Sample Multiplier: 1

Instrument :  
 BNA\_M  
 ClientSampleId :  
 YE644

Quant Time: Dec 27 22:12:35 2024  
 Quant Method : Z:\svoasrv\HPCHEM1\BNA\_M\Methods\SFAM-EPA-SIM-BM121824.M  
 Quant Title : ASP BNA STANDARDS FOR 5 POINT CALIBRATION  
 QLast Update : Thu Dec 26 11:35:38 2024  
 Response via : Initial Calibration

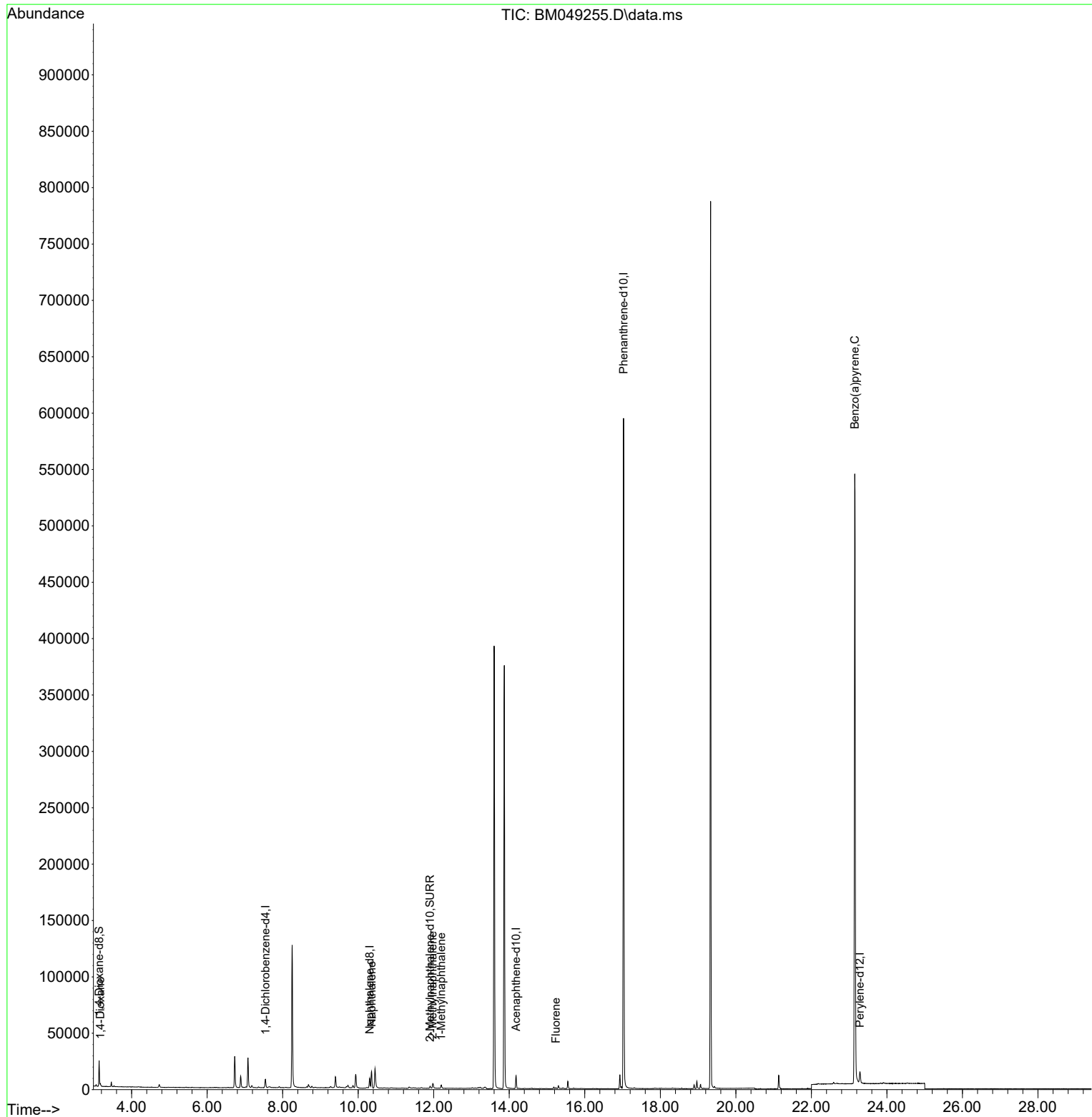
Compound	R.T.	QIon	Response	Conc	Units	Dev(Min)
Internal Standards						
1) 1,4-Dichlorobenzene-d4	7.543	152	3670	0.400	ng/ul	0.00
4) Naphthalene-d8	10.303	136	10895	0.400	ng/ul	0.00
9) Acenaphthene-d10	14.181	164	6427	0.400	ng/ul	0.00
13) Phenanthrene-d10	17.026	188	681056	0.400	ng/ul	0.09
17) Chrysene-d12	0.000	240	0	0.000	ng/ul	-21.13
23) Perylene-d12	23.285	264	15762	0.400	ng/ul	# 0.00
System Monitoring Compounds						
3) 1,4-Dioxane-d8	3.138	96	12493	2.952	ng/ul	0.00
6) 2-Methylnaphthalene-d10	11.903	152	3104	0.212	ng/ul	0.00
18) Fluoranthene-d10	18.968	212	7491	0.000	ng/ul	0.00
Target Compounds						
						Qvalue
2) 1,4-Dioxane	3.172	88	1390	0.281	ng/ul#	82
5) Naphthalene	10.352	128	19923	0.731	ng/ul	99
7) 2-Methylnaphthalene	11.974	142	3992	0.231	ng/ul	100
8) 1-Methylnaphthalene	12.200	142	2242	0.127	ng/ul	98
12) Fluorene	15.236	166	504	0.023	ng/ul#	91
26) Benzo(a)pyrene	23.151	252	2509	0.052	ng/ul#	44

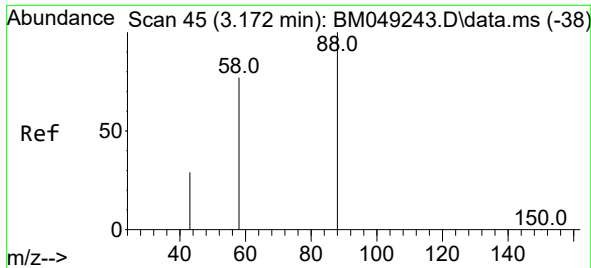
(#) = qualifier out of range (m) = manual integration (+) = signals summed

Data Path : Z:\svoasrv\HPCHEM1\BNA\_M\Data\BM122724\  
 Data File : BM049255.D  
 Acq On : 27 Dec 2024 15:16  
 Operator : RC/JU  
 Sample : P5324-20  
 Misc :  
 ALS Vial : 14 Sample Multiplier: 1

Instrument :  
 BNA\_M  
 ClientSampleId :  
 YE644

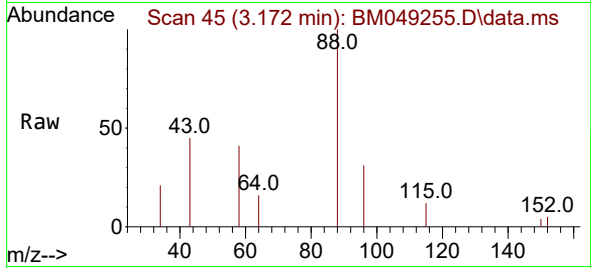
Quant Time: Dec 27 22:12:35 2024  
 Quant Method : Z:\svoasrv\HPCHEM1\BNA\_M\Methods\SFAM-EPA-SIM-BM121824.M  
 Quant Title : ASP BNA STANDARDS FOR 5 POINT CALIBRATION  
 QLast Update : Thu Dec 26 11:35:38 2024  
 Response via : Initial Calibration



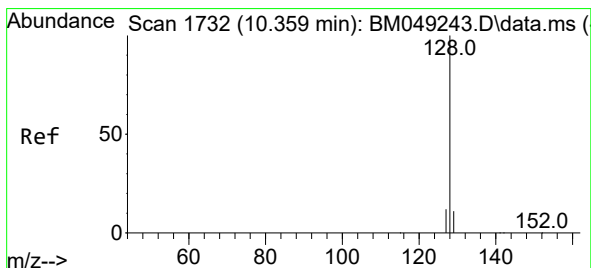
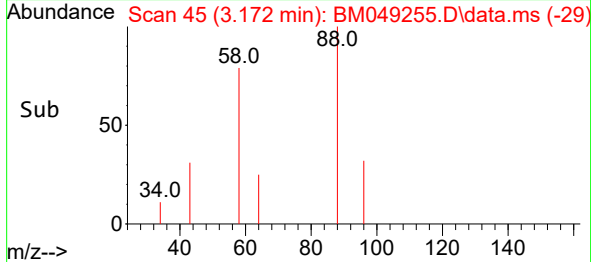
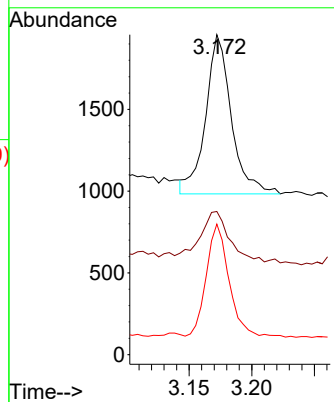


#2  
 1,4-Dioxane  
 Concen: 0.281 ng/ul  
 RT: 3.172 min Scan# 41  
 Delta R.T. -0.004 min  
 Lab File: BM049255.D  
 Acq: 27 Dec 2024 15:16

Instrument :  
 BNA\_M  
 ClientSampleId :  
 YE644

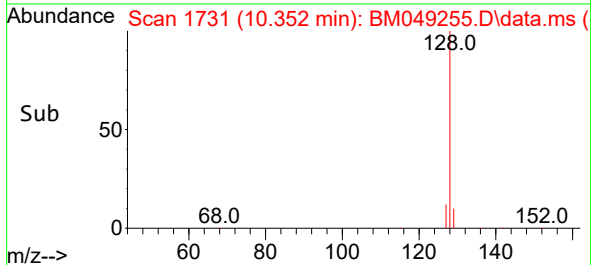
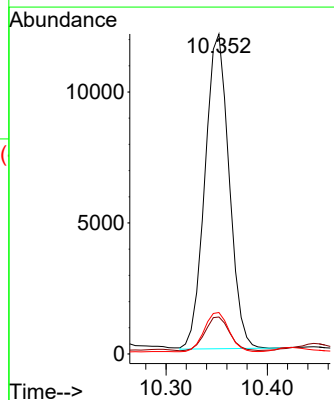
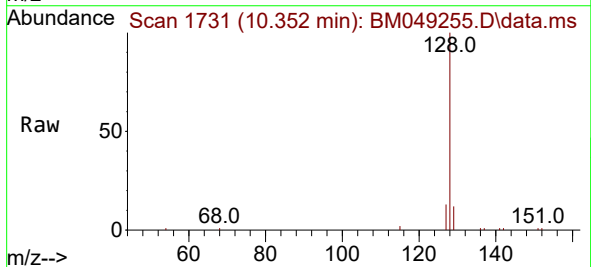


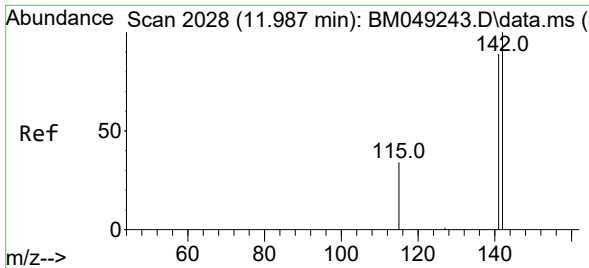
Tgt Ion: 88 Resp: 1390  
 Ion Ratio Lower Upper  
 88 100  
 43 44.8 45.4 68.2#  
 58 40.8 43.6 65.4#



#5  
 Naphthalene  
 Concen: 0.731 ng/ul  
 RT: 10.352 min Scan# 1731  
 Delta R.T. -0.006 min  
 Lab File: BM049255.D  
 Acq: 27 Dec 2024 15:16

Tgt Ion: 128 Resp: 19923  
 Ion Ratio Lower Upper  
 128 100  
 129 11.6 9.7 14.5  
 127 13.0 10.6 16.0

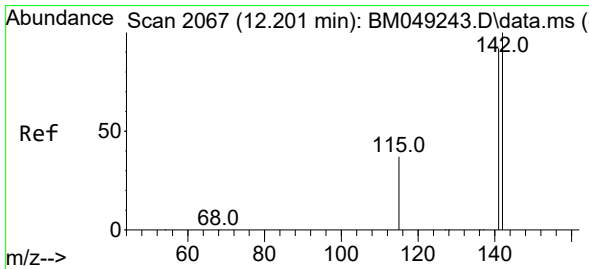
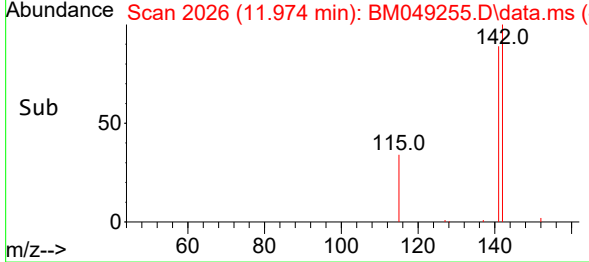
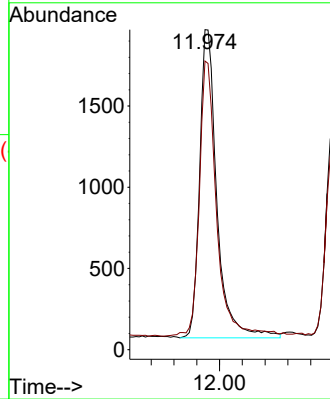
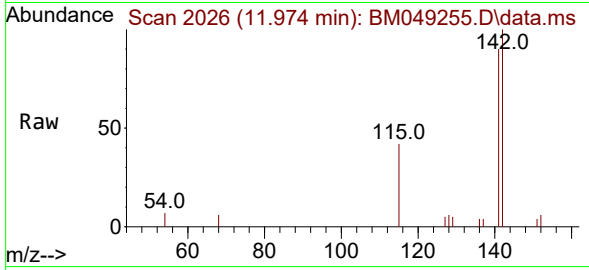




#7  
 2-Methylnaphthalene  
 Concen: 0.231 ng/ul  
 RT: 11.974 min Scan# 2026  
 Delta R.T. -0.006 min  
 Lab File: BM049255.D  
 Acq: 27 Dec 2024 15:16

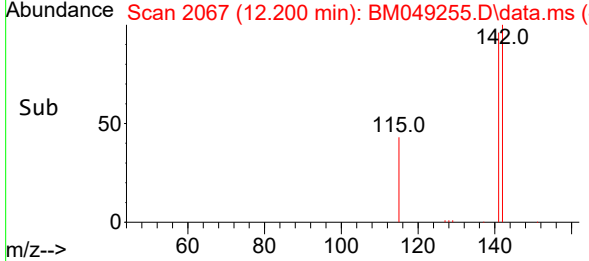
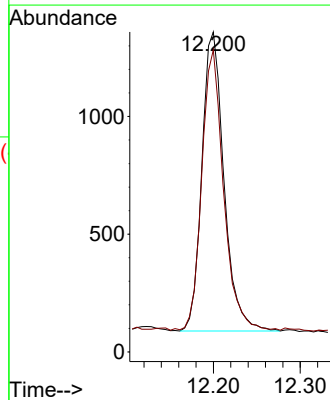
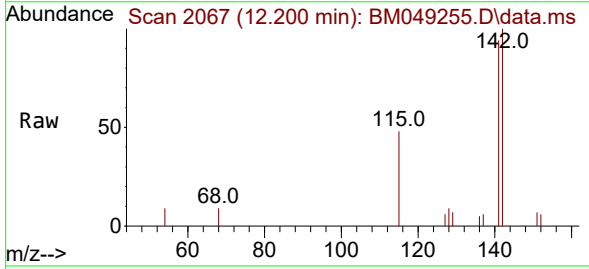
Instrument :  
 BNA\_M  
 ClientSampleId :  
 YE644

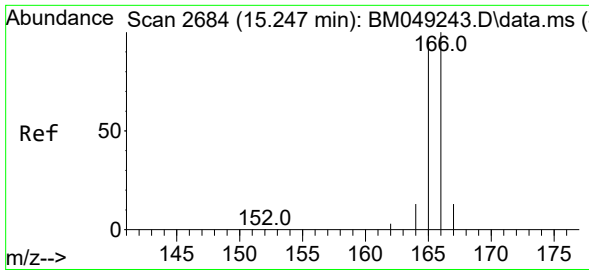
Tgt Ion:142 Resp: 3992  
 Ion Ratio Lower Upper  
 142 100  
 141 89.3 71.7 107.5



#8  
 1-Methylnaphthalene  
 Concen: 0.127 ng/ul  
 RT: 12.200 min Scan# 2067  
 Delta R.T. -0.006 min  
 Lab File: BM049255.D  
 Acq: 27 Dec 2024 15:16

Tgt Ion:142 Resp: 2242  
 Ion Ratio Lower Upper  
 142 100  
 141 92.5 72.7 109.1



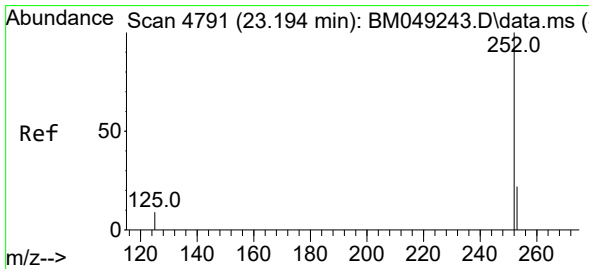
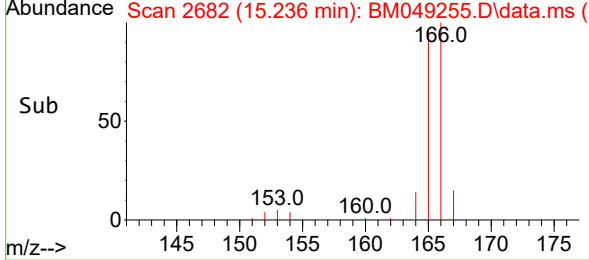
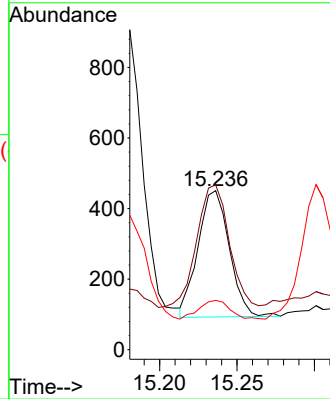
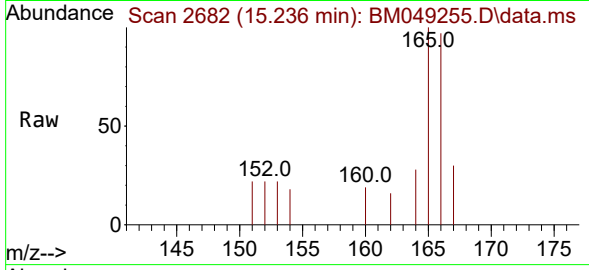


#12  
 Fluorene  
 Concen: 0.023 ng/u1  
 RT: 15.236 min Scan# 2  
 Delta R.T. -0.005 min  
 Lab File: BM049255.D  
 Acq: 27 Dec 2024 15:16

Instrument :  
 BNA\_M  
 ClientSampleId :  
 YE644

Tgt Ion:166 Resp: 504

Ion	Ratio	Lower	Upper
166	100		
165	103.5	79.7	119.5
167	31.0	11.4	17.0#



#26  
 Benzo(a)pyrene  
 Concen: 0.052 ng/u1  
 RT: 23.151 min Scan# 4776  
 Delta R.T. -0.041 min  
 Lab File: BM049255.D  
 Acq: 27 Dec 2024 15:16

Tgt Ion:252 Resp: 2509

Ion	Ratio	Lower	Upper
252	100		
253	55.9	22.4	33.6#
125	45.0	14.8	22.2#

