

Data Path : Z:\SVOASRV\HPCHEM1\BNA P\DATA\BP010320\
 Data File : BP001517.D
 Acq On : 03 Jan 2020 20:39
 Operator : JU
 Sample : K6482-04
 Misc :
 ALS Vial : 8 Sample Multiplier: 1

Instrument :
 BNA_P
 ClientSampleId :
 MC-123119-2-5-COMP-B6

Integration Parameters: rteint.p
 Integrator: RTE
 Smoothing : ON Filtering: 5
 Sampling : 1 Min Area: 3 % of largest Peak
 Start Thrs: 0.2 Max Peaks: 100
 Stop Thrs : 0 Peak Location: TOP

If leading or trailing edge < 100 prefer < Baseline drop else tangent >
 Peak separation: 5

Method : Z:\SVOASRV\HPCHEM1\BNA P\METHODS\8270-BP010320.M
 Title : ASP BNA STANDARDS FOR 5 POINT CALIBRATION

Signal : TIC

peak #	R.T. min	first scan	max scan	last scan	PK TY	peak height	corr. area	corr. % max.	% of total
1	2.928	18	24	31	rBV2	64211	141464	4.64%	0.384%
2	3.022	35	40	55	rVB	343559	452969	14.86%	1.229%
3	4.922	357	363	373	rVB	249897	336123	11.03%	0.912%
4	5.346	429	435	445	rBV	1053406	1525417	50.04%	4.140%
5	6.922	695	703	713	rBV	1023896	1670865	54.81%	4.534%
6	7.252	752	759	770	rBV	1010981	1586239	52.04%	4.305%
7	7.699	829	835	842	rVB	267441	415256	13.62%	1.127%
8	8.016	879	889	897	rBV	803479	1259257	41.31%	3.417%
9	8.851	1023	1031	1040	rBV	608825	981017	32.18%	2.662%
10	10.475	1300	1307	1313	rBV	301340	505221	16.57%	1.371%
11	10.522	1313	1315	1321	rVB	24687	35600	1.17%	0.097%
12	12.963	1723	1730	1736	rVB	1227950	1801261	59.09%	4.888%
13	13.663	1842	1849	1853	rBV3	18328	33261	1.09%	0.090%
14	13.822	1872	1876	1881	rBV	59342	77105	2.53%	0.209%
15	14.057	1905	1916	1923	rBV	93212	152437	5.00%	0.414%
16	14.339	1957	1964	1970	rBV2	418581	618070	20.28%	1.677%
17	14.398	1970	1974	1979	rVB	67365	97737	3.21%	0.265%
18	14.651	2010	2017	2022	rVV4	15672	31292	1.03%	0.085%
19	14.739	2027	2032	2039	rVB2	38686	64912	2.13%	0.176%
20	15.234	2109	2116	2121	rVB4	16636	32805	1.08%	0.089%
21	15.392	2138	2143	2149	rBV	77310	115661	3.79%	0.314%
22	15.698	2190	2195	2198	rBV	32612	46069	1.51%	0.125%
23	15.839	2208	2219	2228	rBV	1004337	1484896	48.71%	4.030%
24	16.404	2310	2315	2321	rVB3	21177	46696	1.53%	0.127%
25	16.645	2352	2356	2358	rBV2	23749	31136	1.02%	0.084%
26	16.680	2359	2362	2366	rVB2	25780	32495	1.07%	0.088%
27	16.757	2371	2375	2382	rVB4	31815	58499	1.92%	0.159%
28	16.845	2384	2390	2395	rBV3	38201	88802	2.91%	0.241%
29	16.910	2396	2401	2406	rVB2	53051	85122	2.79%	0.231%
30	17.098	2427	2433	2436	rBV	527728	737395	24.19%	2.001%
31	17.139	2436	2440	2445	rVV	918183	1287192	42.23%	3.493%
32	17.228	2448	2455	2462	rVB	208705	314301	10.31%	0.853%
33	17.298	2463	2467	2472	rBV5	42282	64870	2.13%	0.176%
34	17.504	2495	2502	2507	rBV2	70390	133822	4.39%	0.363%

Data Path : Z:\SVOASRV\HPCHEM1\BNA P\DATA\BP010320\
 Data File : BP001517.D
 Acq On : 03 Jan 2020 20:39
 Operator : JU
 Sample : K6482-04
 Misc :
 ALS Vial : 8 Sample Multiplier: 1

Instrument :
 BNA_P
 ClientSampleId :
 MC-123119-2-5-COMP-B6

Integration Parameters: rteint.p
 Integrator: RTE
 Smoothing : ON
 Sampling : 1
 Start Thrs: 0.2
 Stop Thrs : 0

Filtering: 5
 Min Area: 3 % of largest Peak
 Max Peaks: 100
 Peak Location: TOP

If leading or trailing edge < 100 prefer < Baseline drop else tangent >
 Peak separation: 5

Method : Z:\SVOASRV\HPCHEM1\BNA P\METHODS\8270-BP010320.M
 Title : ASP BNA STANDARDS FOR 5 POINT CALIBRATION

35	17.551	2508	2510	2518	rVV6	19973	40764	1.34%	0.111%
36	17.633	2520	2524	2529	rVV3	38464	71270	2.34%	0.193%
37	17.686	2529	2533	2537	rVB5	21507	35387	1.16%	0.096%
38	17.975	2577	2582	2586	rBV	164989	222120	7.29%	0.603%
39	18.022	2586	2590	2592	rVV	223605	327408	10.74%	0.889%
40	18.045	2592	2594	2599	rVV	185926	214085	7.02%	0.581%
41	18.098	2599	2603	2608	rVV	114720	162062	5.32%	0.440%
42	18.157	2608	2613	2617	rVV2	249324	448014	14.70%	1.216%
43	18.192	2617	2619	2627	rVB	125159	184609	6.06%	0.501%
44	18.322	2638	2641	2645	rVB3	32037	35578	1.17%	0.097%
45	18.463	2661	2665	2668	rBV	145696	185384	6.08%	0.503%
46	18.498	2668	2671	2677	rVB2	73726	92722	3.04%	0.252%
47	18.704	2703	2706	2710	rVB3	59808	79329	2.60%	0.215%
48	18.751	2712	2714	2717	rVV	43912	44618	1.46%	0.121%
49	18.786	2717	2720	2724	rVB2	42957	55292	1.81%	0.150%
50	18.869	2730	2734	2738	rBV	126734	184597	6.06%	0.501%
51	18.933	2742	2745	2747	rVB2	54843	66982	2.20%	0.182%
52	18.998	2753	2756	2764	rVB2	100356	171540	5.63%	0.466%
53	19.122	2771	2777	2782	rBV	2018139	2626059	86.15%	7.127%
54	19.192	2786	2789	2791	rVV3	74219	80299	2.63%	0.218%
55	19.269	2799	2802	2806	rBV2	58744	91954	3.02%	0.250%
56	19.469	2828	2836	2845	rBV2	1731761	3048315	100.00%	8.272%
57	19.545	2845	2849	2857	rVB2	107578	220990	7.25%	0.600%
58	19.645	2863	2866	2868	rBV	137912	170408	5.59%	0.462%
59	19.680	2868	2872	2883	rVB	1902077	2543815	83.45%	6.903%
60	19.798	2886	2892	2897	rBV3	146817	356719	11.70%	0.968%
61	19.922	2910	2913	2915	rBV3	138518	195516	6.41%	0.531%
62	19.957	2916	2919	2924	rVB	298451	387293	12.71%	1.051%
63	20.057	2933	2936	2939	rBV	168009	179659	5.89%	0.488%
64	20.110	2941	2945	2950	rVB2	273745	395044	12.96%	1.072%
65	20.245	2965	2968	2972	rBV	162545	199635	6.55%	0.542%
66	20.292	2972	2976	2980	rBV3	177841	258672	8.49%	0.702%
67	20.686	3040	3043	3050	rVB	191776	267547	8.78%	0.726%
68	20.886	3075	3077	3080	rVB	164000	149579	4.91%	0.406%
69	20.951	3085	3088	3091	rVB4	372230	450238	14.77%	1.222%
70	21.186	3124	3128	3133	rBV3	1244011	2303166	75.56%	6.250%
71	21.233	3133	3136	3143	rVB	1005385	1298940	42.61%	3.525%

Data Path : Z:\SVOASRV\HPCHEM1\BNA P\DATA\BP010320\
Data File : BP001517.D
Acq On : 03 Jan 2020 20:39
Operator : JU
Sample : K6482-04
Misc :
ALS Vial : 8 Sample Multiplier: 1

Instrument :
BNA_P
ClientSampleId :
MC-123119-2-5-COMP-B6

Integration Parameters: rteint.p
Integrator: RTE
Smoothing : ON Filtering: 5
Sampling : 1 Min Area: 3 % of largest Peak
Start Thrs: 0.2 Max Peaks: 100
Stop Thrs : 0 Peak Location: TOP

If leading or trailing edge < 100 prefer < Baseline drop else tangent >
Peak separation: 5

Method : Z:\SVOASRV\HPCHEM1\BNA P\METHODS\8270-BP010320.M
Title : ASP BNA STANDARDS FOR 5 POINT CALIBRATION

72	22.786	3395	3400	3404	rBV	674621	1461296	47.94%	3.966%
73	23.363	3494	3498	3504	rVB	694261	1196820	39.26%	3.248%

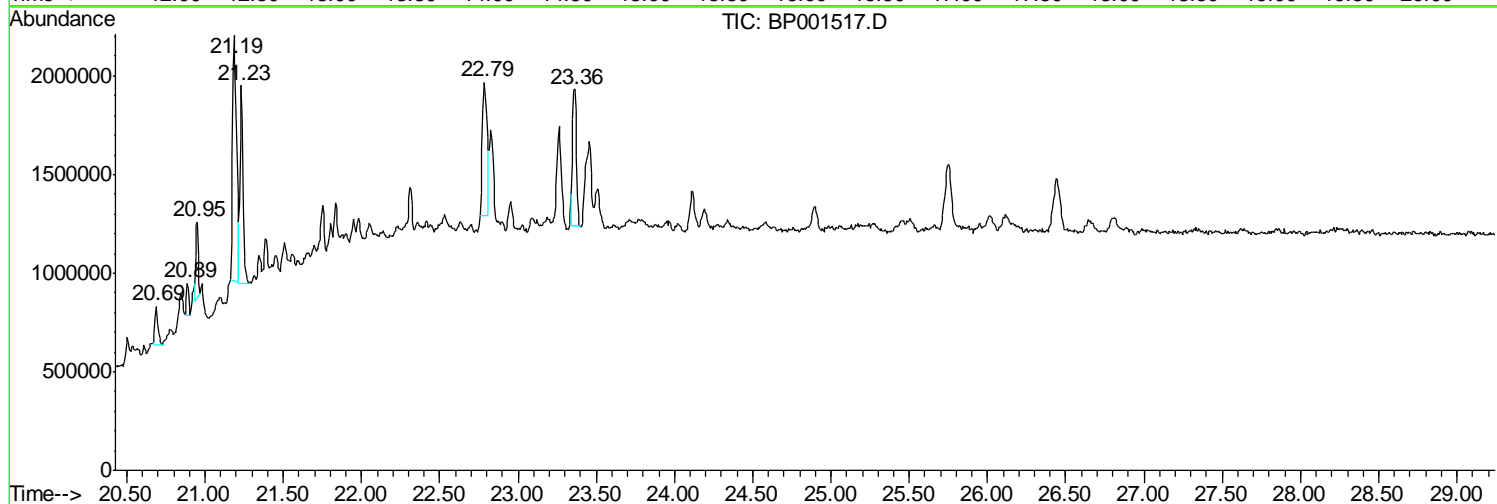
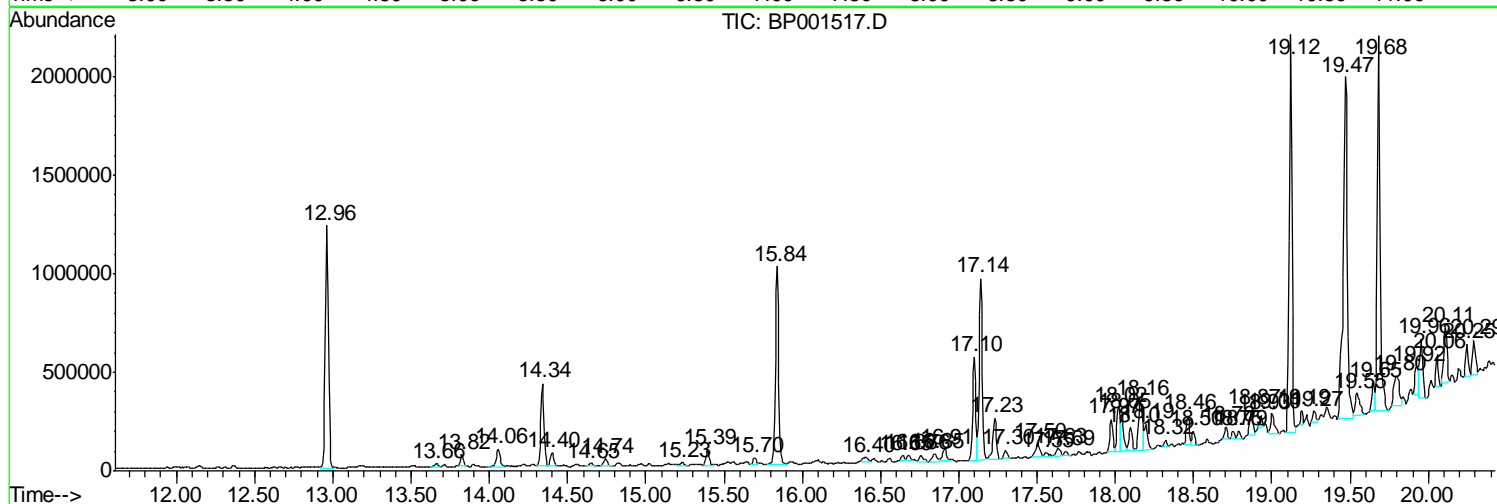
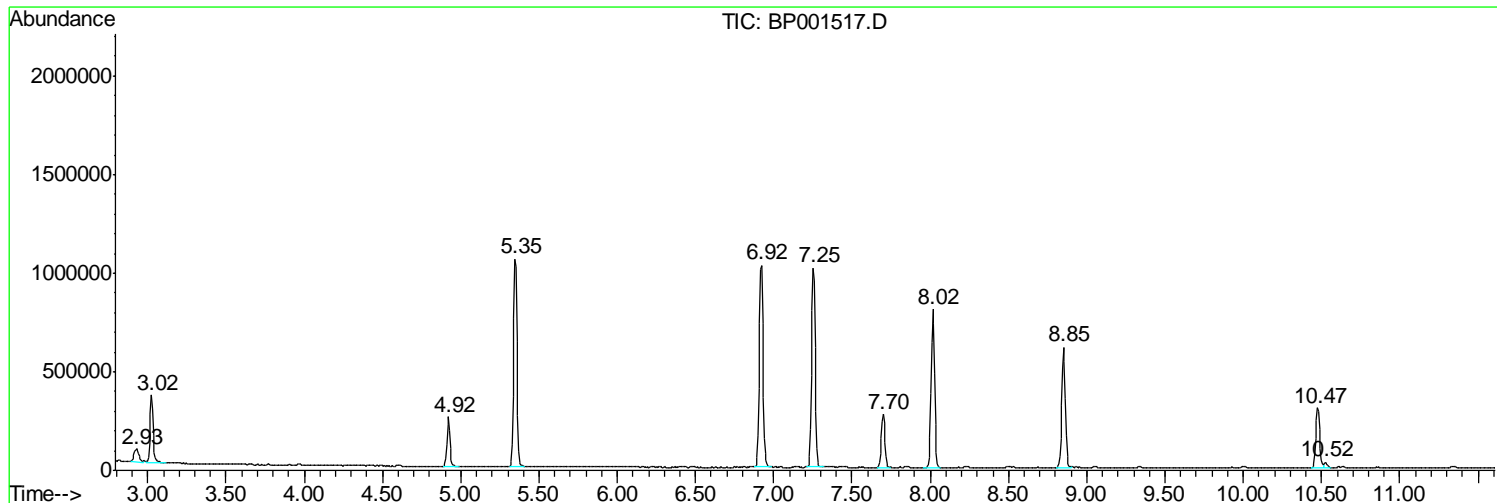
Sum of corrected areas: 36848989

Data Path : Z:\SVOASRV\HPCHEM1\BNA P\DATA\BP010320\
 Data File : BP001517.D
 Acq On : 03 Jan 2020 20:39
 Operator : JU
 Sample : K6482-04
 Misc :
 ALS Vial : 8 Sample Multiplier: 1

Instrument :
 BNA_P
ClientSampleId :
 MC-123119-2-5-COMP-B6

Quant Method : Z:\SVOASRV\HPCHEM1\BNA P\METHODS\8270-BP010320.M
 Quant Title : ASP BNA STANDARDS FOR 5 POINT CALIBRATION

TIC Library : C:\DATABASE\NIST11.L
 TIC Integration Parameters: LSCINT.P



Data Path : Z:\SVOASRV\HPCHEM1\BNA P\DATA\BP010320\
 Data File : BP001517.D
 Acq On : 03 Jan 2020 20:39
 Operator : JU
 Sample : K6482-04
 Misc :
 ALS Vial : 8 Sample Multiplier: 1

Instrument :
 BNA_P
 ClientSampleId :
 MC-123119-2-5-COMP-B6

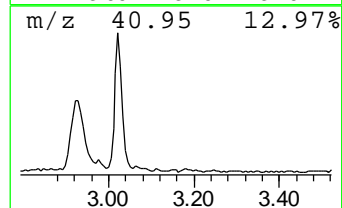
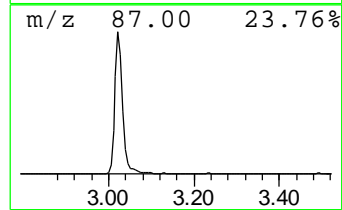
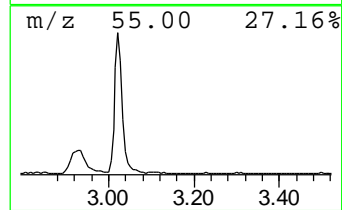
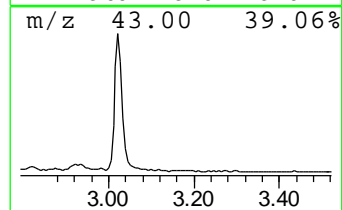
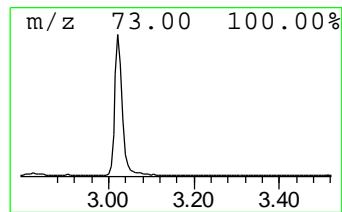
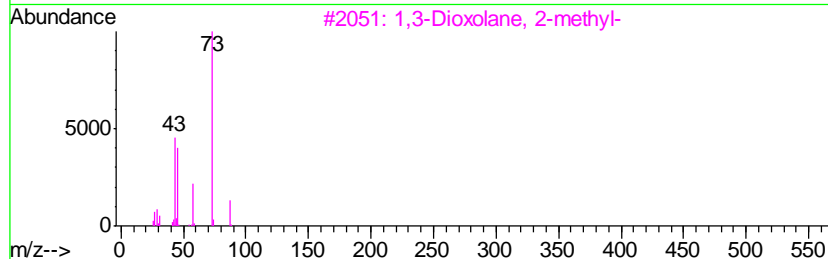
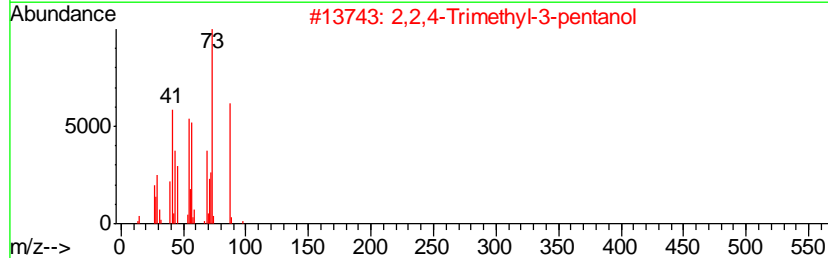
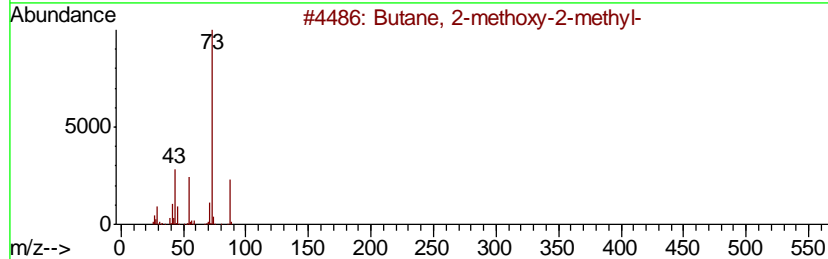
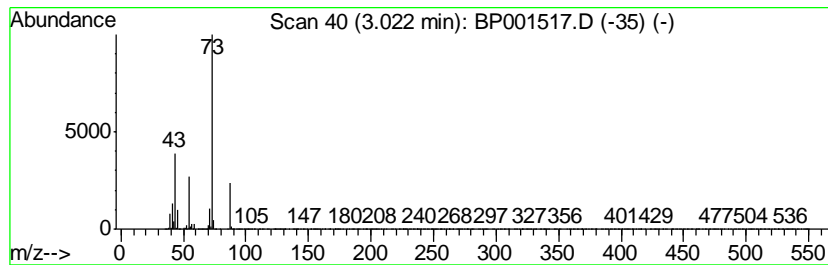
Quant Method : Z:\SVOASRV\HPCHEM1\BNA P\METHODS\8270-BP010320.M
 Quant Title : ASP BNA STANDARDS FOR 5 POINT CALIBRATION

TIC Library : C:\DATABASE\NIST11.L
 TIC Integration Parameters: LSCINT.P

 Peak Number 2 Butane, 2-methoxy-2-methyl- Concentration Rank 3

R.T.	EstConc	Area	Relative to ISTD	R.T.
3.02	21.82 ng	452969	1,4-Dichlorobenzene-d4	7.70

Hit#	of	Tentative ID	MW	MolForm	CAS#	Qual
1	5	Butane, 2-methoxy-2-methyl-	102	C6H14O	000994-05-8	83
2		2,2,4-Trimethyl-3-pentanol	130	C8H18O	005162-48-1	39
3		1,3-Dioxolane, 2-methyl-	88	C4H8O2	000497-26-7	25
4		Pentane, 3-methoxy-	102	C6H14O	036839-67-5	12
5		Silane, tetramethyl-	88	C4H12Si	000075-76-3	10



Data Path : Z:\SVOASRV\HPCHEM1\BNA P\DATA\BP010320\
 Data File : BP001517.D
 Acq On : 03 Jan 2020 20:39
 Operator : JU
 Sample : K6482-04
 Misc :
 ALS Vial : 8 Sample Multiplier: 1

Instrument :
 BNA_P
 ClientSampleId :
 MC-123119-2-5-COMP-B6

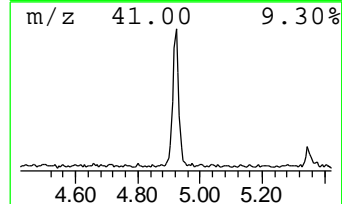
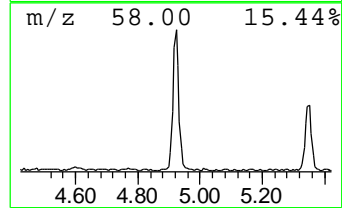
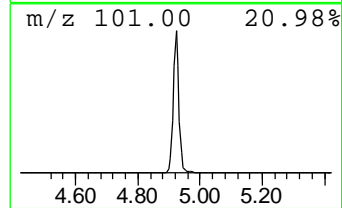
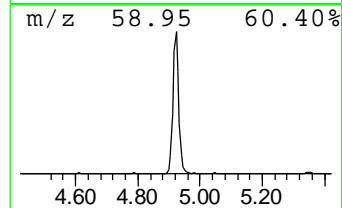
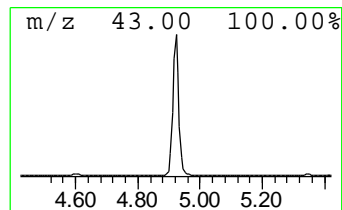
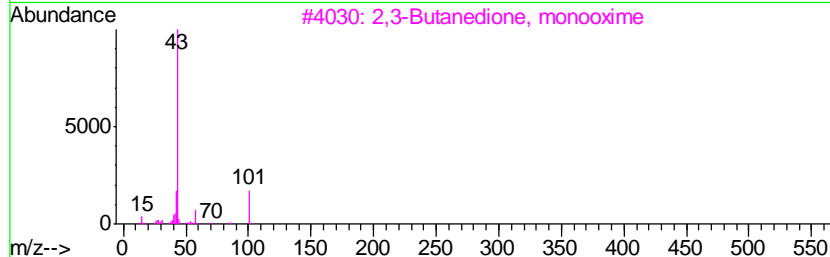
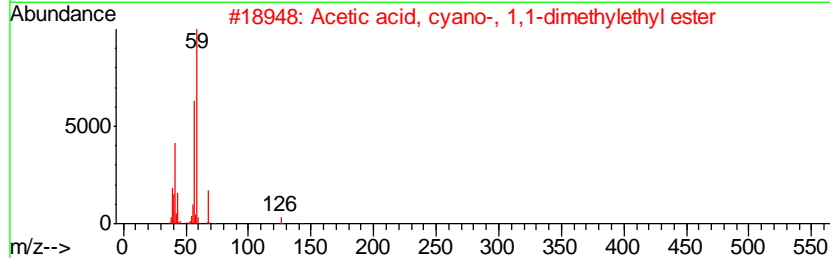
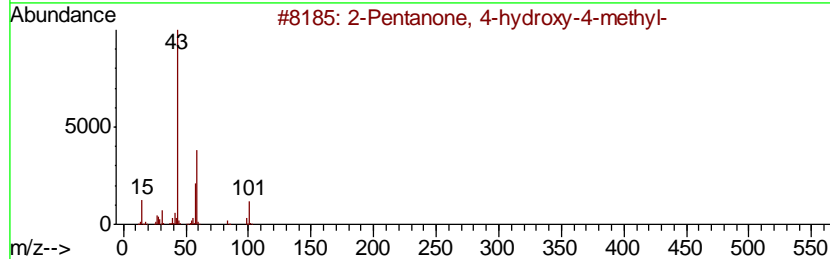
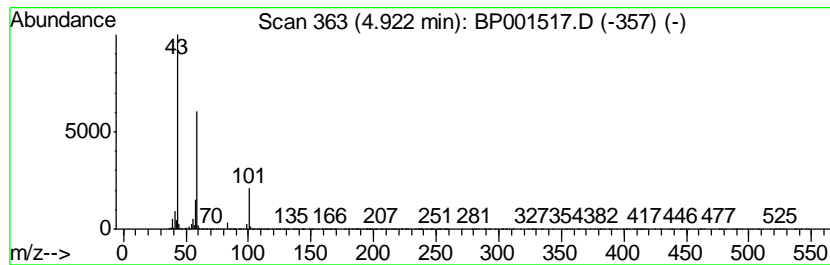
Quant Method : Z:\SVOASRV\HPCHEM1\BNA P\METHODS\8270-BP010320.M
 Quant Title : ASP BNA STANDARDS FOR 5 POINT CALIBRATION

TIC Library : C:\DATABASE\NIST11.L
 TIC Integration Parameters: LSCINT.P

 Peak Number 3 2-Pentanone, 4-hydroxy-4-me... Concentration Rank 4

R.T.	EstConc	Area	Relative to ISTD	R.T.
4.92	16.19 ng	336123	1,4-Dichlorobenzene-d4	7.70

Hit#	of	Tentative ID	MW	MolForm	CAS#	Qual
1	5	2-Pentanone, 4-hydroxy-4-methyl-	116	C6H12O2	000123-42-2	56
2		Acetic acid, cyano-, 1,1-dimethyl...	141	C7H11NO2	001116-98-9	23
3		2,3-Butanedione, monooxime	101	C4H7NO2	000057-71-6	9
4		Morpholine, 4-methyl-	101	C5H11NO	000109-02-4	9
5		Acetic acid, 1,1-dimethylethyl e...	116	C6H12O2	000540-88-5	9



Data Path : Z:\SVOASRV\HPCHEM1\BNA P\DATA\BP010320\
 Data File : BP001517.D
 Acq On : 03 Jan 2020 20:39
 Operator : JU
 Sample : K6482-04
 Misc :
 ALS Vial : 8 Sample Multiplier: 1

Instrument :
 BNA_P
 ClientSampleId :
 MC-123119-2-5-COMP-B6

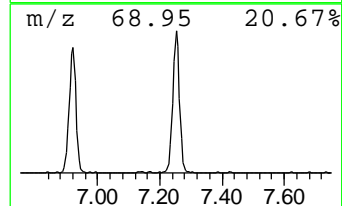
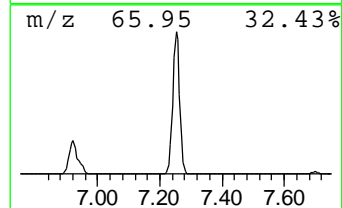
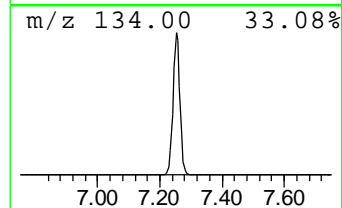
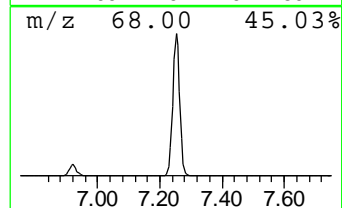
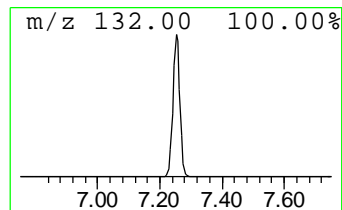
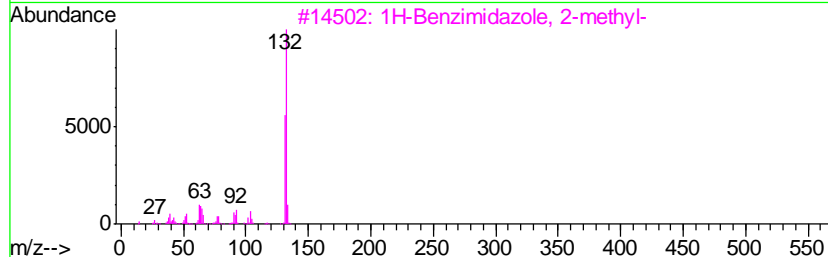
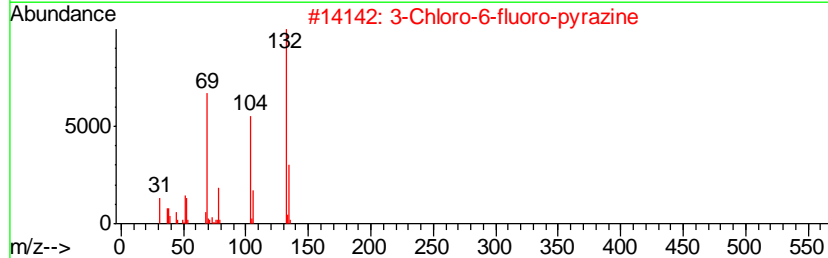
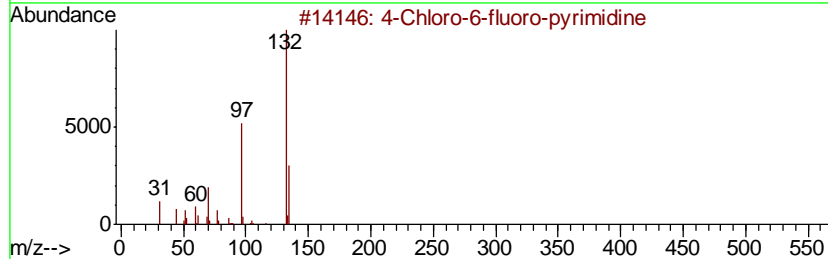
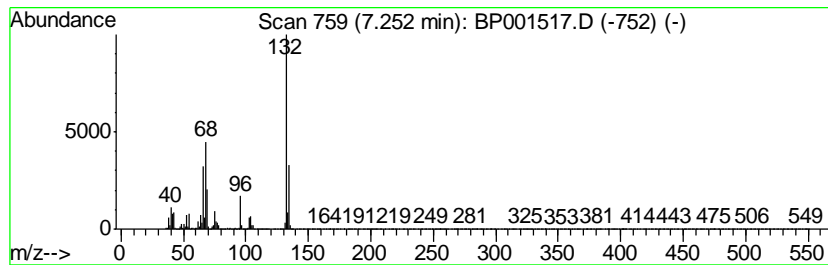
Quant Method : Z:\SVOASRV\HPCHEM1\BNA P\METHODS\8270-BP010320.M
 Quant Title : ASP BNA STANDARDS FOR 5 POINT CALIBRATION

TIC Library : C:\DATABASE\NIST11.L
 TIC Integration Parameters: LSCINT.P

 Peak Number 4 unknown7.25 Concentration Rank 1

R.T.	EstConc	Area	Relative to ISTD	R.T.
7.25	76.40 ng	1586240	1,4-Dichlorobenzene-d4	7.70

Hit#	of	Tentative ID	MW	MolForm	CAS#	Qual
1	5	4-Chloro-6-fluoro-pyrimidine	132	C4H2ClFN2	051422-01-6	27
2		3-Chloro-6-fluoro-pyrazine	132	C4H2ClFN2	1000146-10-7	27
3		1H-Benzimidazole, 2-methyl-	132	C8H8N2	000615-15-6	22
4		Tranvlcypromine-propionyl	189	C12H15NO	1000123-86-3	12
5		5-Fluoro-2-chloropyrimidine	132	C4H2ClFN2	062802-42-0	12



Data Path : Z:\SVOASRV\HPCHEM1\BNA P\DATA\BP010320\
 Data File : BP001517.D
 Acq On : 03 Jan 2020 20:39
 Operator : JU
 Sample : K6482-04
 Misc :
 ALS Vial : 8 Sample Multiplier: 1

Instrument :
 BNA_P
 ClientSampleId :
 MC-123119-2-5-COMP-B6

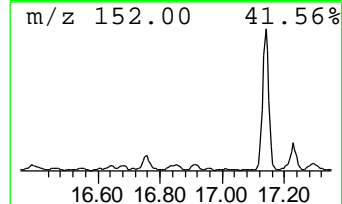
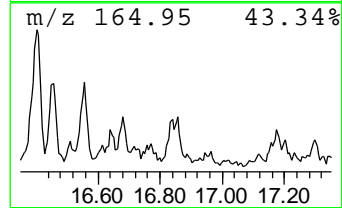
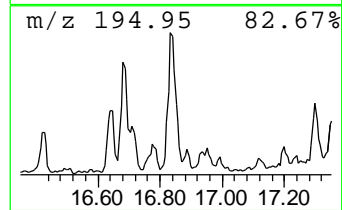
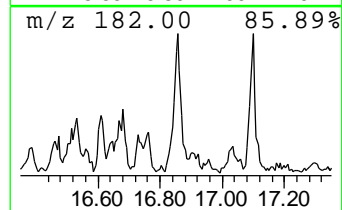
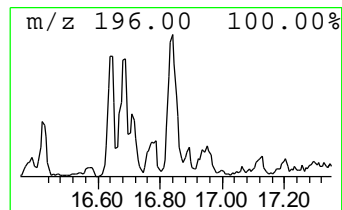
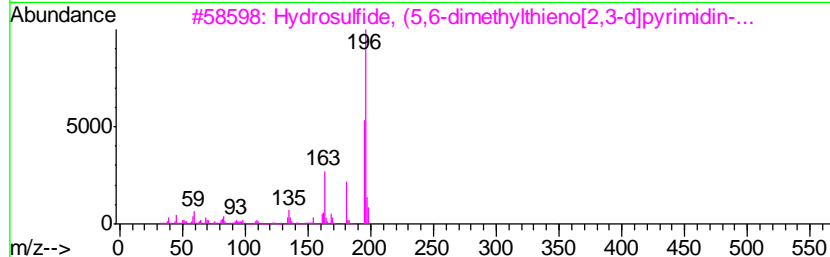
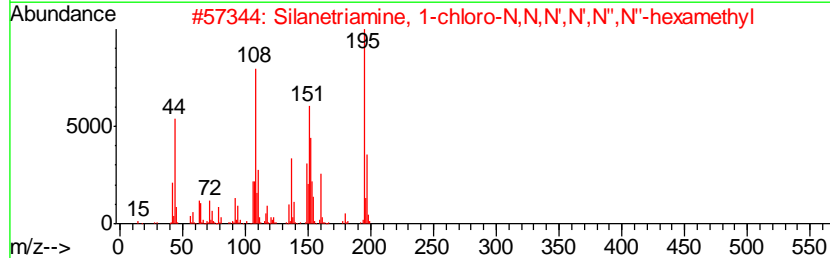
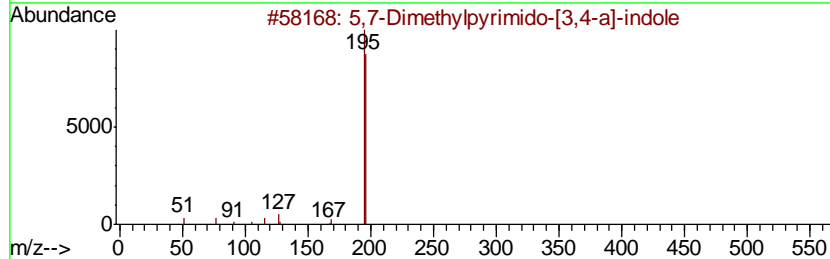
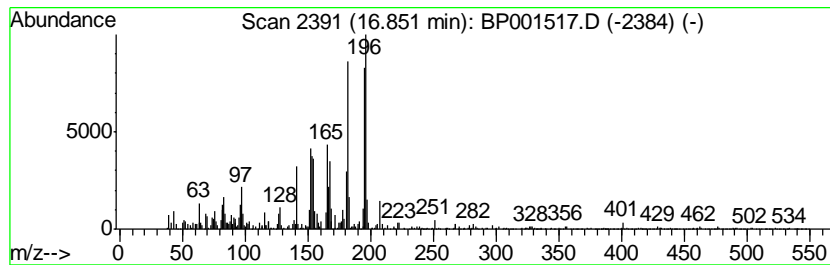
Quant Method : Z:\SVOASRV\HPCHEM1\BNA P\METHODS\8270-BP010320.M
 Quant Title : ASP BNA STANDARDS FOR 5 POINT CALIBRATION

TIC Library : C:\DATABASE\NIST11.L
 TIC Integration Parameters: LSCINT.P

 Peak Number 6 unknown16.85 Concentration Rank 20

R.T.	EstConc	Area	Relative to ISTD	R.T.
16.85	2.41 ng	88802	Phenanthrene-d10	17.10

Hit#	of	Tentative ID	MW	MolForm	CAS#	Qual
1	5	5,7-Dimethylpyrimido-[3,4-a]-indole	196	C13H12N2	038349-21-2	46
2		Silanetriamine, 1-chloro-N,N,N',...	195	C6H18ClN3Si	013307-05-6	38
3		Hydrosulfide, (5,6-dimethylthien...	196	C8H8N2S2	1000362-41-8	38
4		8-Dimethylaminonaphthalene-1-car...	196	C13H12N2	128644-69-9	38
5		Benzenamine, 4-[(E)-2-(4-pyridin...	196	C13H12N2	1000351-61-4	35



Data Path : Z:\SVOASRV\HPCHEM1\BNA P\DATA\BP010320\
 Data File : BP001517.D
 Acq On : 03 Jan 2020 20:39
 Operator : JU
 Sample : K6482-04
 Misc :
 ALS Vial : 8 Sample Multiplier: 1

Instrument :
 BNA_P
 ClientSampleID :
 MC-123119-2-5-COMP-B6

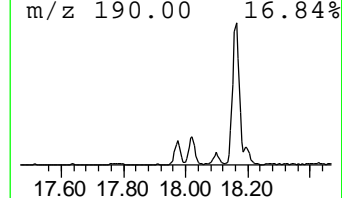
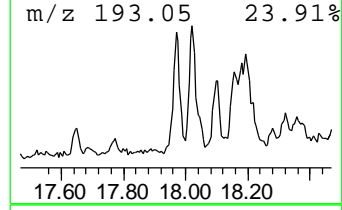
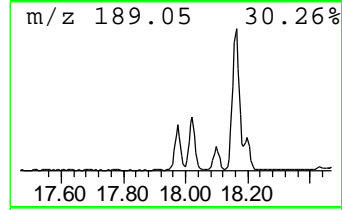
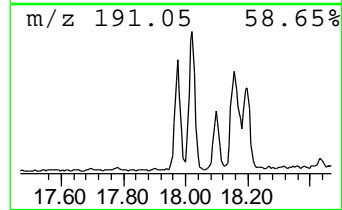
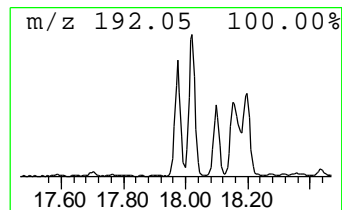
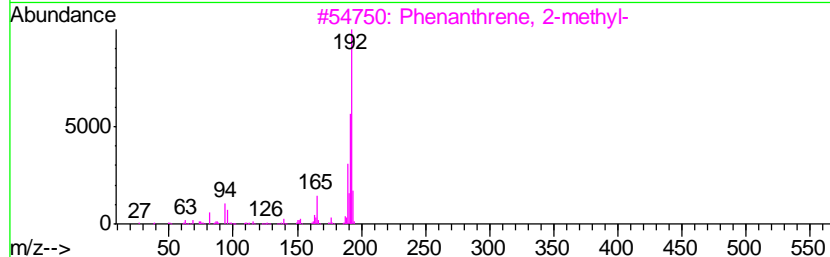
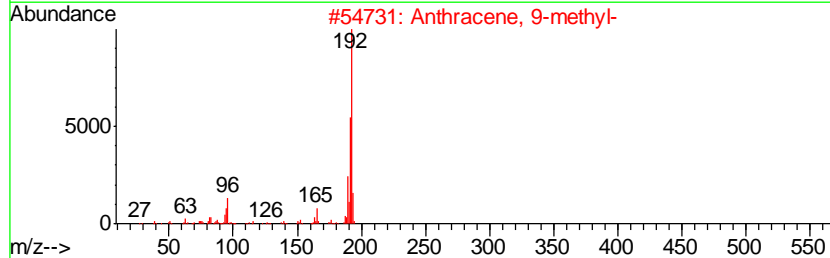
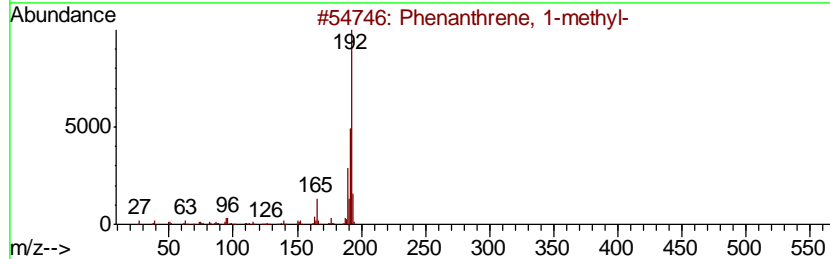
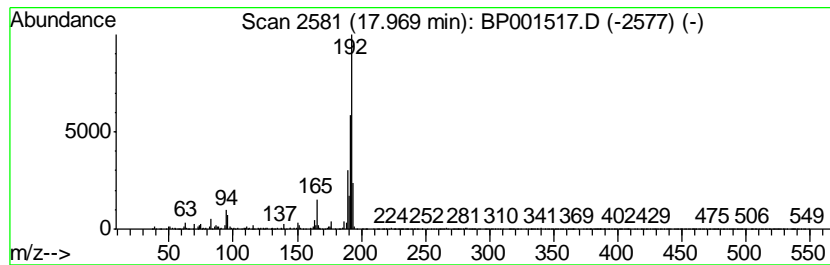
Quant Method : Z:\SVOASRV\HPCHEM1\BNA P\METHODS\8270-BP010320.M
 Quant Title : ASP BNA STANDARDS FOR 5 POINT CALIBRATION

TIC Library : C:\DATABASE\NIST11.L
 TIC Integration Parameters: LSCINT.P

 Peak Number 7 Phenanthrene, 1-methyl- Concentration Rank 8

R.T.	EstConc	Area	Relative to ISTD	R.T.
17.97	6.02 ng	222120	Phenanthrene-d10	17.10

Hit#	of	Tentative ID	MW	MolForm	CAS#	Qual
1	5	Phenanthrene, 1-methyl-	192	C15H12	000832-69-9	91
2		Anthracene, 9-methyl-	192	C15H12	000779-02-2	91
3		Phenanthrene, 2-methyl-	192	C15H12	002531-84-2	91
4		Anthracene, 1-methyl-	192	C15H12	000610-48-0	91
5		1H-Cyclopropa[1]phenanthrene, 1a, ...	192	C15H12	000949-41-7	91



Data Path : Z:\SVOASRV\HPCHEM1\BNA P\DATA\BP010320\
 Data File : BP001517.D
 Acq On : 03 Jan 2020 20:39
 Operator : JU
 Sample : K6482-04
 Misc :
 ALS Vial : 8 Sample Multiplier: 1

Instrument :
 BNA_P
 ClientSampleId :
 MC-123119-2-5-COMP-B6

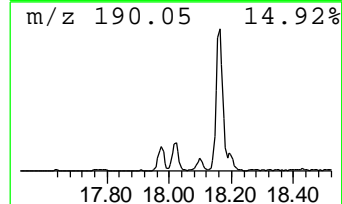
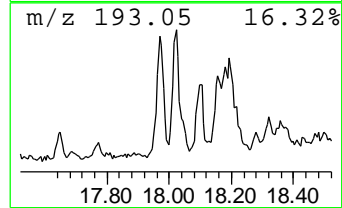
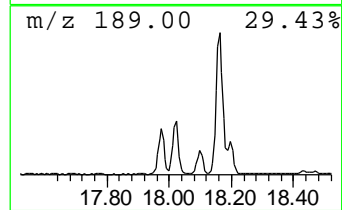
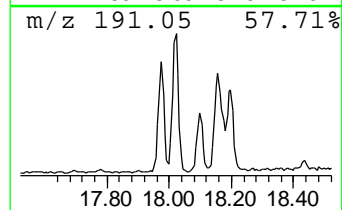
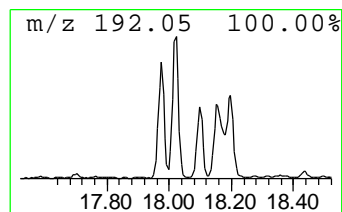
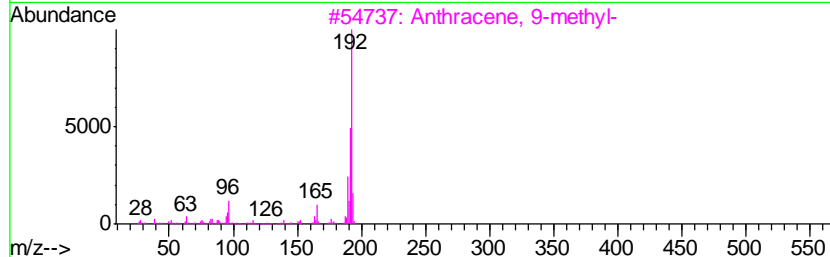
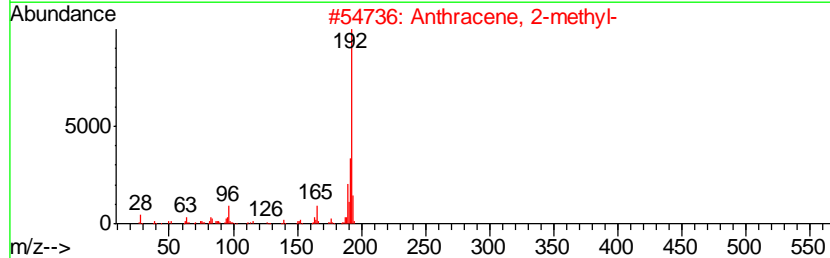
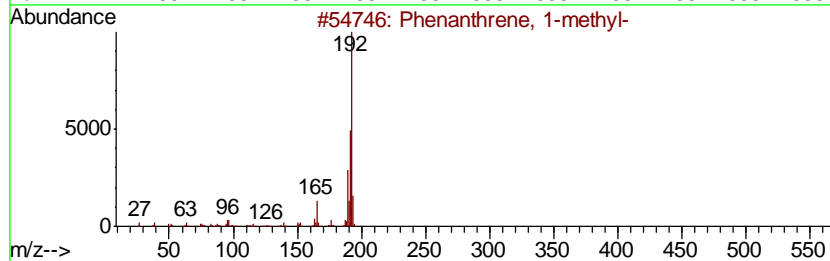
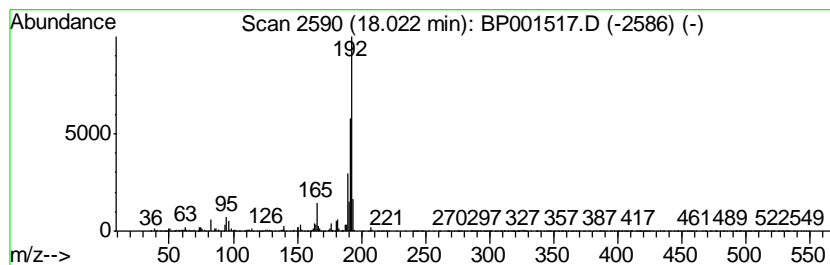
Quant Method : Z:\SVOASRV\HPCHEM1\BNA P\METHODS\8270-BP010320.M
 Quant Title : ASP BNA STANDARDS FOR 5 POINT CALIBRATION

TIC Library : C:\DATABASE\NIST11.L
 TIC Integration Parameters: LSCINT.P

 Peak Number 8 Anthracene, 2-methyl- Concentration Rank 6

R.T.	EstConc	Area	Relative to ISTD	R.T.
18.02	8.88 ng	327408	Phenanthrene-d10	17.10

Hit#	of	Tentative ID	MW	MolForm	CAS#	Qual
1	5	Phenanthrene, 1-methyl-	192	C15H12	000832-69-9	93
2		Anthracene, 2-methyl-	192	C15H12	000613-12-7	93
3		Anthracene, 9-methyl-	192	C15H12	000779-02-2	93
4		Phenanthrene, 2-methyl-	192	C15H12	002531-84-2	93
5		1H-Cyclopropa[1]phenanthrene, 1a,...	192	C15H12	000949-41-7	93



Data Path : Z:\SVOASRV\HPCHEM1\BNA P\DATA\BP010320\
 Data File : BP001517.D
 Acq On : 03 Jan 2020 20:39
 Operator : JU
 Sample : K6482-04
 Misc :
 ALS Vial : 8 Sample Multiplier: 1

Instrument :
 BNA_P
 ClientSampleId :
 MC-123119-2-5-COMP-B6

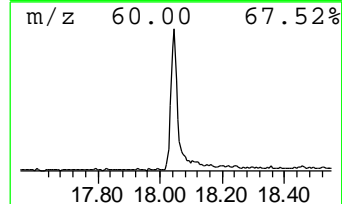
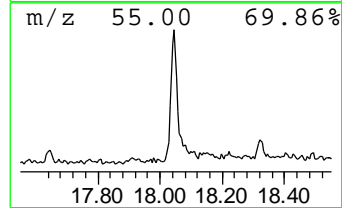
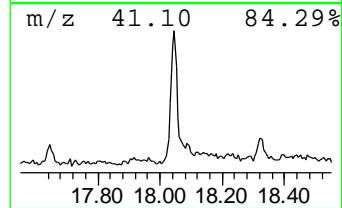
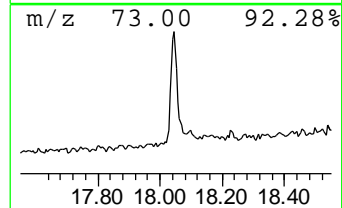
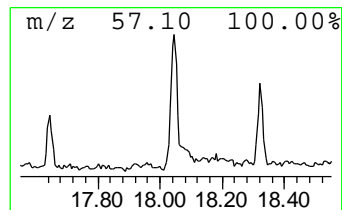
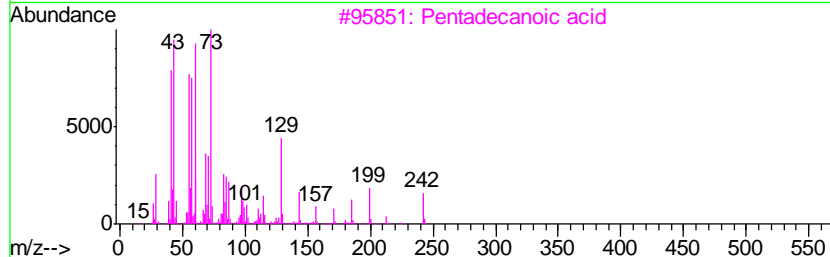
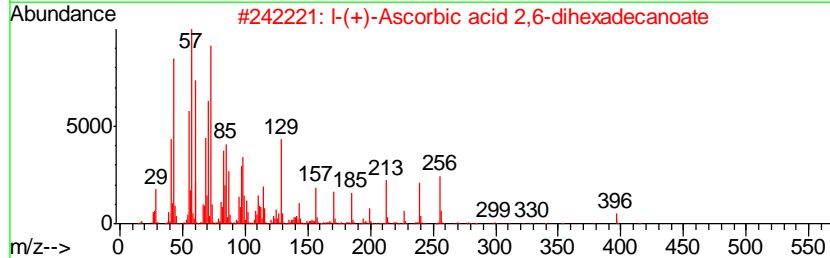
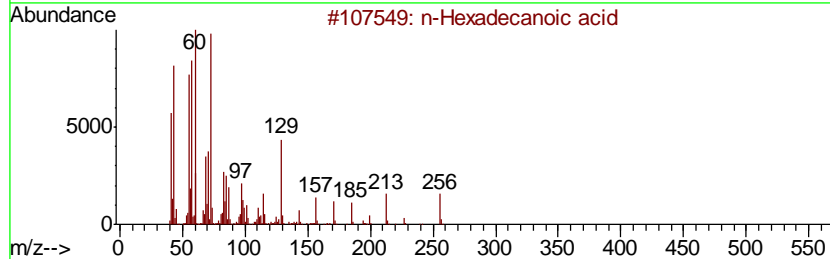
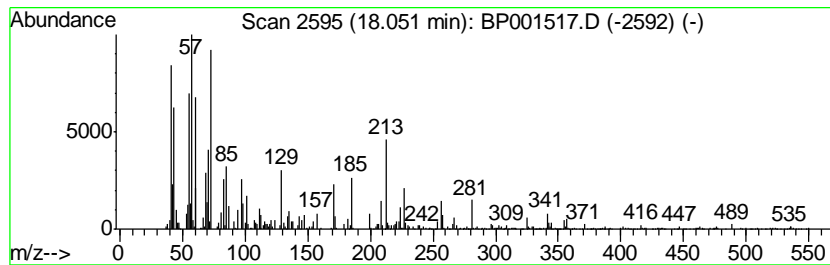
Quant Method : Z:\SVOASRV\HPCHEM1\BNA P\METHODS\8270-BP010320.M
 Quant Title : ASP BNA STANDARDS FOR 5 POINT CALIBRATION

TIC Library : C:\DATABASE\NIST11.L
 TIC Integration Parameters: LSCINT.P

 Peak Number 9 n-Hexadecanoic acid Concentration Rank 9

R.T.	EstConc	Area	Relative to ISTD	R.T.
18.05	5.81 ng	214085	Phenanthrene-d10	17.10

Hit#	of	Tentative ID	MW	MolForm	CAS#	Qual
1	5	n-Hexadecanoic acid	256	C16H32O2	000057-10-3	91
2		l-(+)-Ascorbic acid 2,6-dihexade...	652	C38H68O8	028474-90-0	72
3		Pentadecanoic acid	242	C15H30O2	001002-84-2	68
4		Dodecanoic acid	200	C12H24O2	000143-07-7	64
5		Tridecanoic acid	214	C13H26O2	000638-53-9	64



Data Path : Z:\SVOASRV\HPCHEM1\BNA P\DATA\BP010320\
 Data File : BP001517.D
 Acq On : 03 Jan 2020 20:39
 Operator : JU
 Sample : K6482-04
 Misc :
 ALS Vial : 8 Sample Multiplier: 1

Instrument :
 BNA_P
 ClientSampleID :
 MC-123119-2-5-COMP-B6

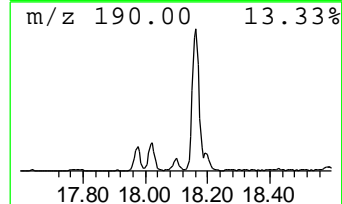
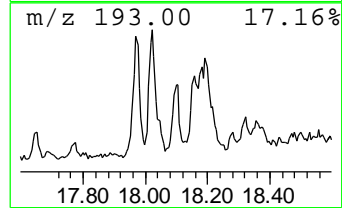
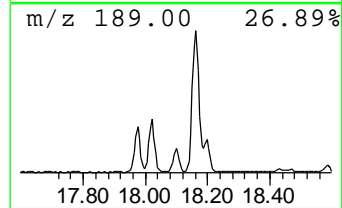
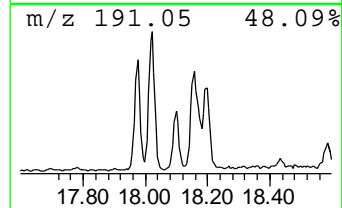
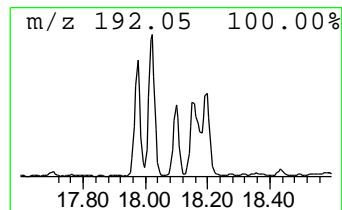
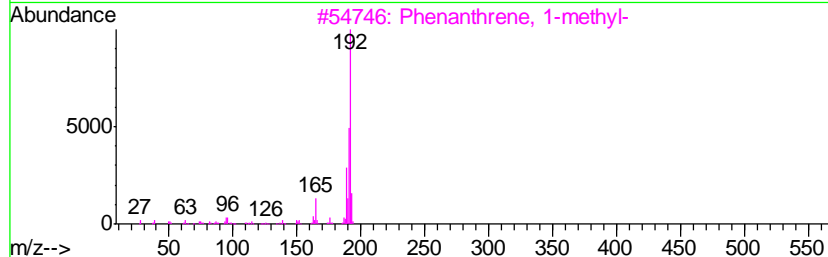
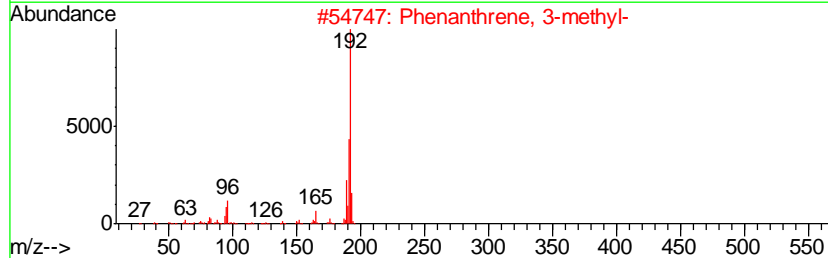
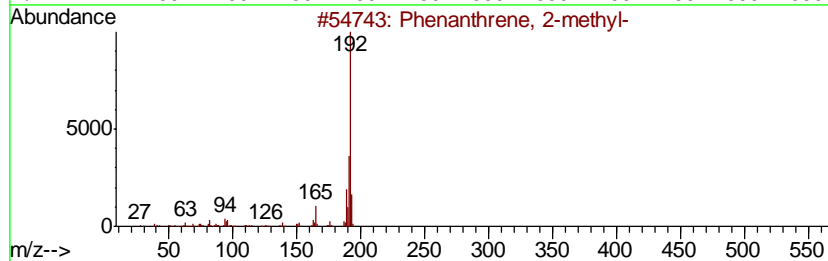
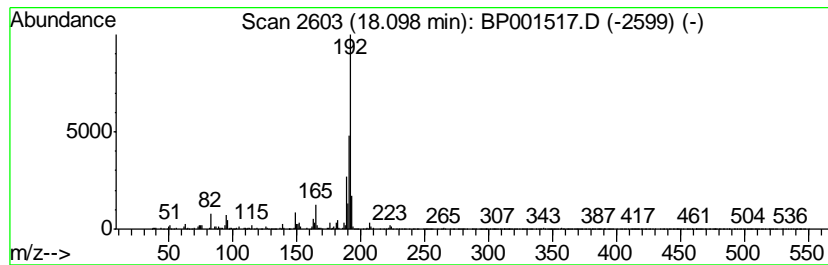
Quant Method : Z:\SVOASRV\HPCHEM1\BNA P\METHODS\8270-BP010320.M
 Quant Title : ASP BNA STANDARDS FOR 5 POINT CALIBRATION

TIC Library : C:\DATABASE\NIST11.L
 TIC Integration Parameters: LSCINT.P

 Peak Number 10 Phenanthrene, 2-methyl- Concentration Rank 14

R.T.	EstConc	Area	Relative to ISTD	R.T.
18.10	4.40 ng	162062	Phenanthrene-d10	17.10

Hit#	of	Tentative ID	MW	MolForm	CAS#	Qual
1	5	Phenanthrene, 2-methyl-	192	C15H12	002531-84-2	97
2		Phenanthrene, 3-methyl-	192	C15H12	000832-71-3	95
3		Phenanthrene, 1-methyl-	192	C15H12	000832-69-9	95
4		1H-Cyclopropa[1]phenanthrene, 1a, ...	192	C15H12	000949-41-7	95
5		Anthracene, 9-methyl-	192	C15H12	000779-02-2	95



Data Path : Z:\SVOASRV\HPCHEM1\BNA P\DATA\BP010320\
 Data File : BP001517.D
 Acq On : 03 Jan 2020 20:39
 Operator : JU
 Sample : K6482-04
 Misc :
 ALS Vial : 8 Sample Multiplier: 1

Instrument :
 BNA_P
 ClientSampleID :
 MC-123119-2-5-COMP-B6

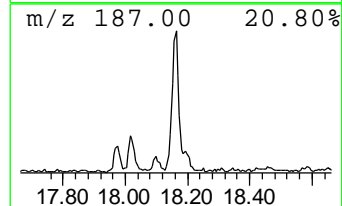
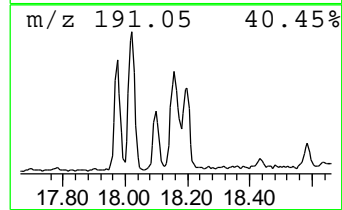
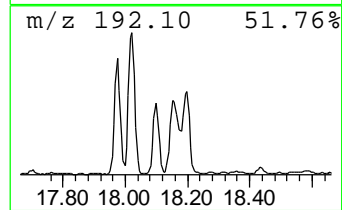
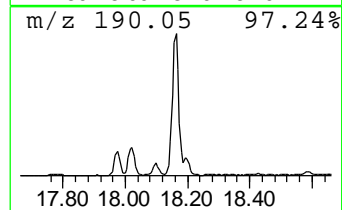
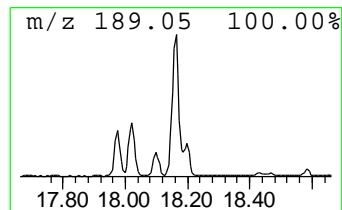
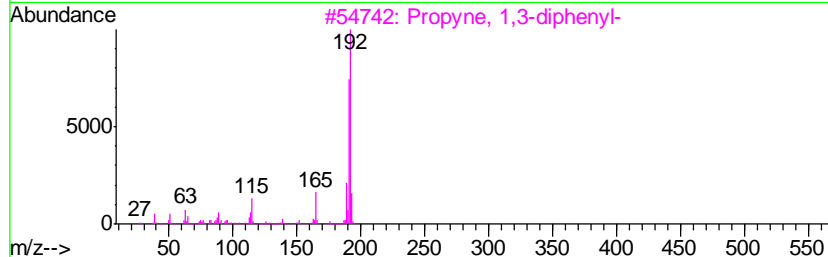
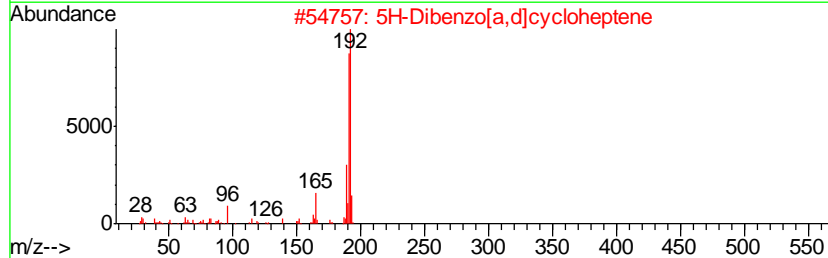
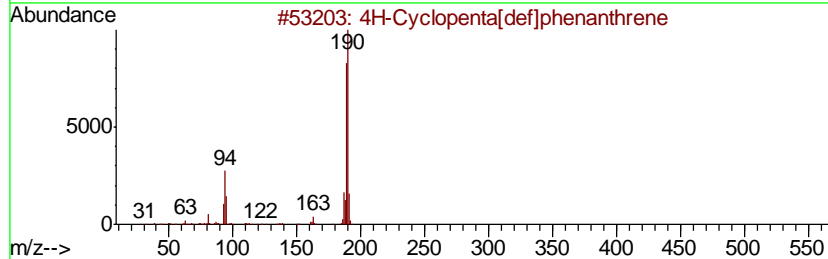
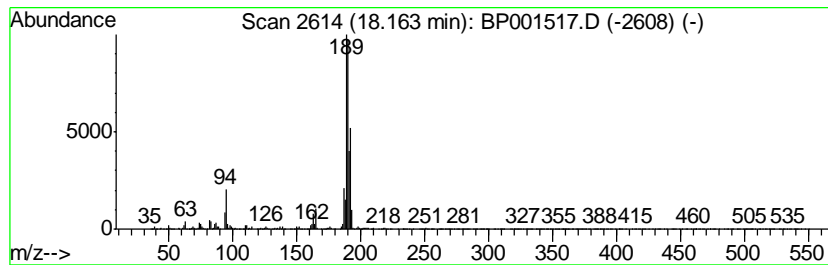
Quant Method : Z:\SVOASRV\HPCHEM1\BNA P\METHODS\8270-BP010320.M
 Quant Title : ASP BNA STANDARDS FOR 5 POINT CALIBRATION

TIC Library : C:\DATABASE\NIST11.L
 TIC Integration Parameters: LSCINT.P

 Peak Number 11 4H-Cyclopenta[def]phenanthrene Concentration Rank 5

R.T.	EstConc	Area	Relative to ISTD	R.T.
18.16	12.15 ng	448014	Phenanthrene-d10	17.10

Hit#	of	Tentative ID	MW	MolForm	CAS#	Qual
1	5	4H-Cyclopenta[def]phenanthrene	190	C15H10	000203-64-5	70
2		5H-Dibenzo[a,d]cycloheptene	192	C15H12	000256-81-5	38
3		Propyne, 1,3-diphenyl-	192	C15H12	004980-70-5	25
4		Naphtho[2,3-b]norbornadiene	192	C15H12	107426-38-0	25
5		Anthracene, 9-methyl-	192	C15H12	000779-02-2	25



Data Path : Z:\SVOASRV\HPCHEM1\BNA P\DATA\BP010320\
 Data File : BP001517.D
 Acq On : 03 Jan 2020 20:39
 Operator : JU
 Sample : K6482-04
 Misc :
 ALS Vial : 8 Sample Multiplier: 1

Instrument :
 BNA_P
 ClientSampled :
 MC-123119-2-5-COMP-B6

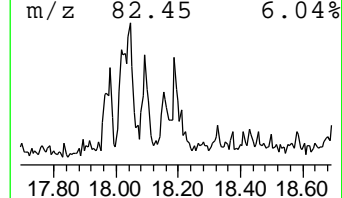
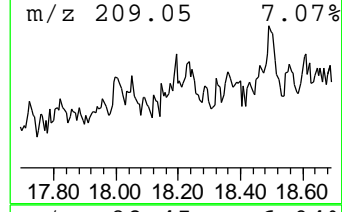
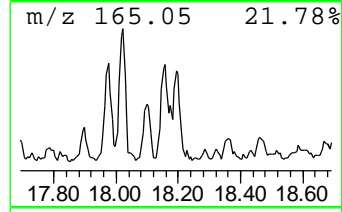
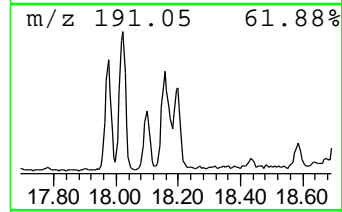
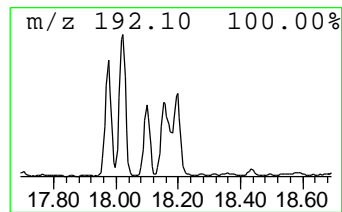
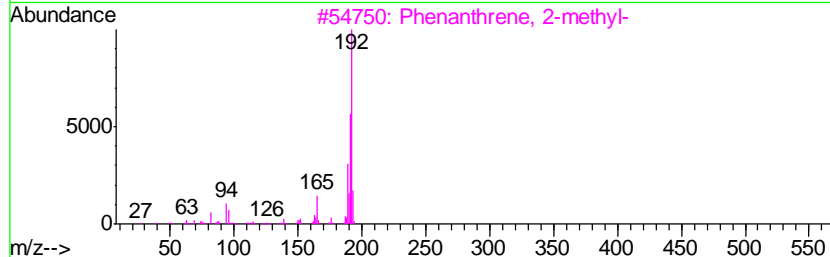
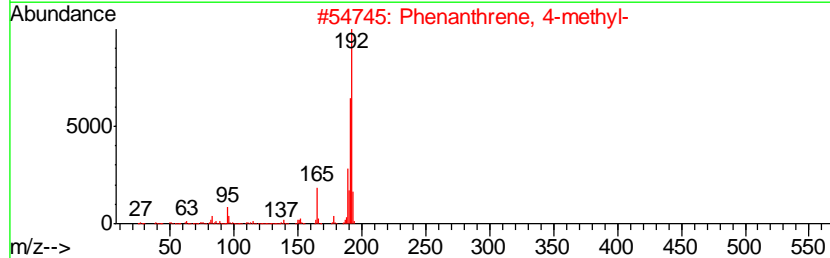
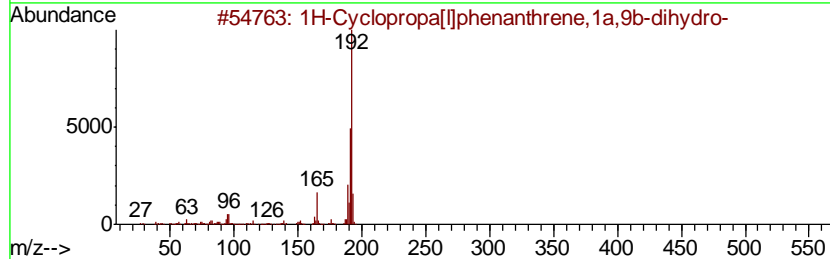
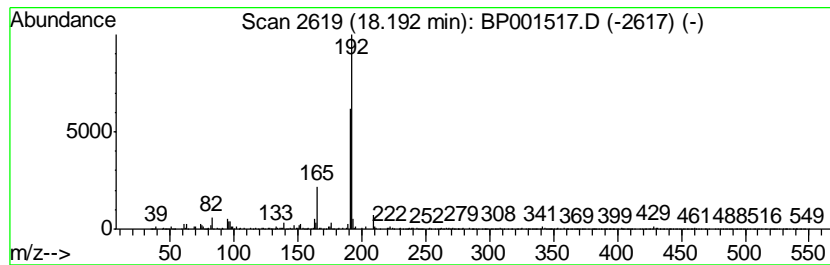
Quant Method : Z:\SVOASRV\HPCHEM1\BNA P\METHODS\8270-BP010320.M
 Quant Title : ASP BNA STANDARDS FOR 5 POINT CALIBRATION

TIC Library : C:\DATABASE\NIST11.L
 TIC Integration Parameters: LSCINT.P

 Peak Number 12 1H-Cyclopropa[l]phenanthren... Concentration Rank 11

R.T.	EstConc	Area	Relative to ISTD	R.T.
18.19	5.01 ng	184609	Phenanthrene-d10	17.10

Hit#	of	Tentative ID	MW	MolForm	CAS#	Qual
1	5	1H-Cyclopropa[l]phenanthrene, 1a, ...	192	C15H12	000949-41-7	80
2		Phenanthrene, 4-methyl-	192	C15H12	000832-64-4	80
3		Phenanthrene, 2-methyl-	192	C15H12	002531-84-2	80
4		1H-Indene, 2-phenyl-	192	C15H12	004505-48-0	72
5		Anthracene, 1-methyl-	192	C15H12	000610-48-0	72



Data Path : Z:\SVOASRV\HPCHEM1\BNA P\DATA\BP010320\
 Data File : BP001517.D
 Acq On : 03 Jan 2020 20:39
 Operator : JU
 Sample : K6482-04
 Misc :
 ALS Vial : 8 Sample Multiplier: 1

Instrument :
 BNA_P
 ClientSampled :
 MC-123119-2-5-COMP-B6

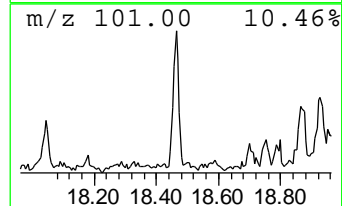
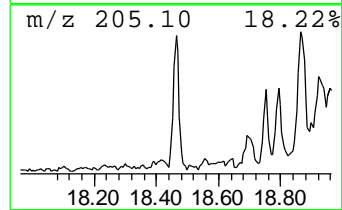
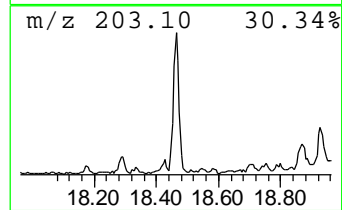
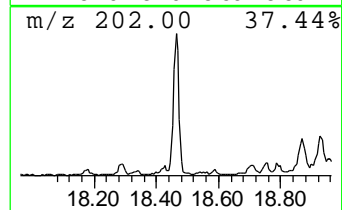
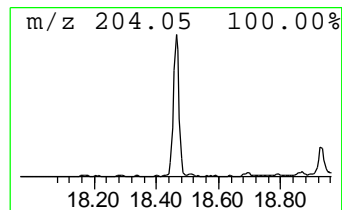
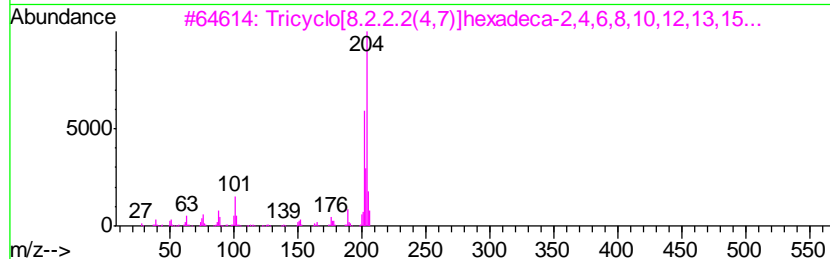
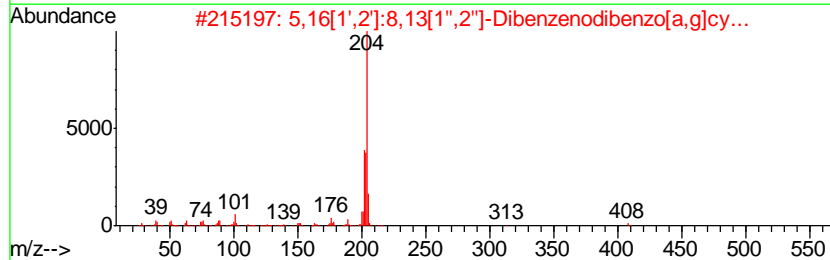
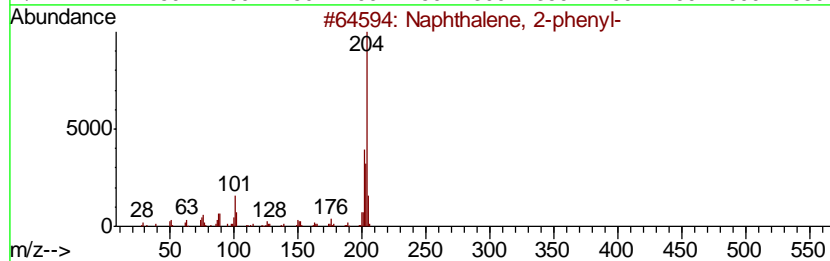
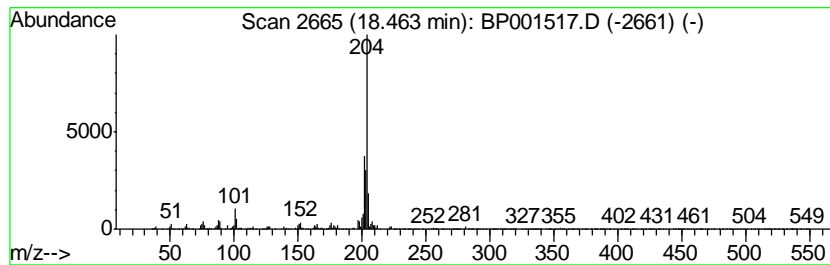
Quant Method : Z:\SVOASRV\HPCHEM1\BNA P\METHODS\8270-BP010320.M
 Quant Title : ASP BNA STANDARDS FOR 5 POINT CALIBRATION

TIC Library : C:\DATABASE\NIST11.L
 TIC Integration Parameters: LSCINT.P

 Peak Number 13 Naphthalene, 2-phenyl- Concentration Rank 10

R.T.	EstConc	Area	Relative to ISTD	R.T.
18.46	5.03 ng	185384	Phenanthrene-d10	17.10

Hit#	of	Tentative ID	MW	MolForm	CAS#	Qual
1	5	Naphthalene, 2-phenyl-	204	C16H12	000612-94-2	89
2		5,16[1',2']:8,13[1'',2'']-Dibenz...	408	C32H24	005672-97-9	80
3		Tricyclo[8.2.2.2(4,7)]hexadeca-2...	204	C16H12	006572-60-7	76
4		9,10-Bis(bromomethyl)anthracene	362	C16H12Br2	034373-96-1	53
5		[1,1'-Biphenyl]-2-ol, 5-chloro-	204	C12H9ClO	000607-12-5	53



Data Path : Z:\SVOASRV\HPCHEM1\BNA P\DATA\BP010320\
 Data File : BP001517.D
 Acq On : 03 Jan 2020 20:39
 Operator : JU
 Sample : K6482-04
 Misc :
 ALS Vial : 8 Sample Multiplier: 1

Instrument :
 BNA_P
 ClientSampled :
 MC-123119-2-5-COMP-B6

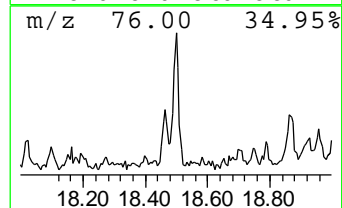
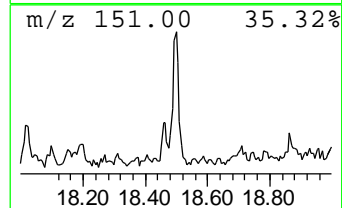
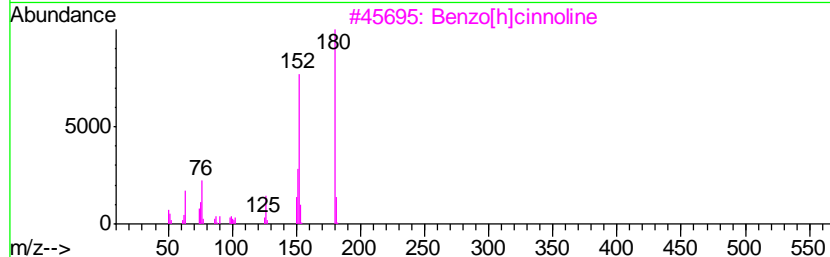
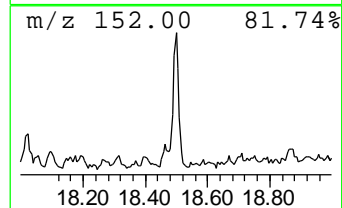
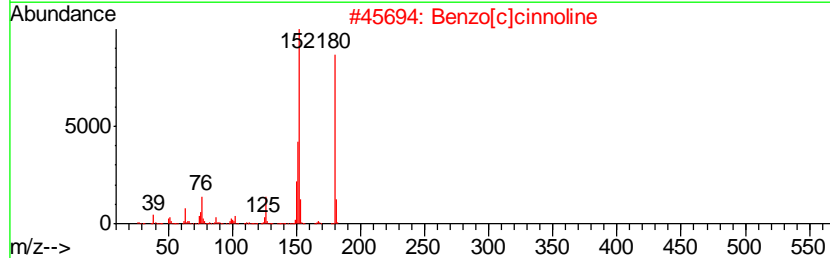
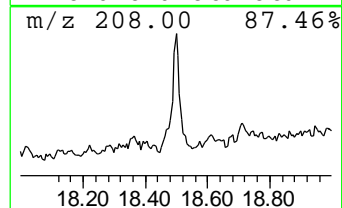
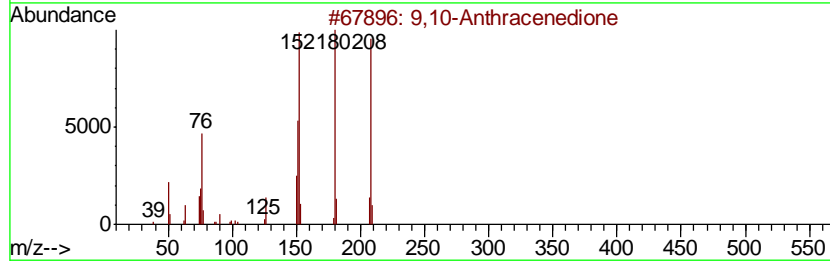
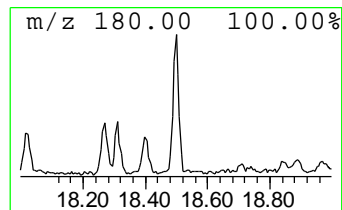
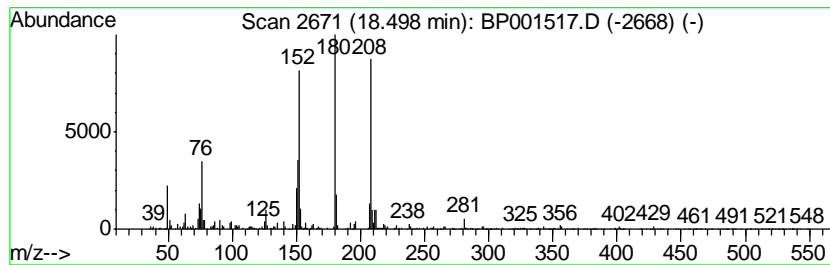
Quant Method : Z:\SVOASRV\HPCHEM1\BNA P\METHODS\8270-BP010320.M
 Quant Title : ASP BNA STANDARDS FOR 5 POINT CALIBRATION

TIC Library : C:\DATABASE\NIST11.L
 TIC Integration Parameters: LSCINT.P

 Peak Number 14 9,10-Anthracenedione Concentration Rank 19

R.T.	EstConc	Area	Relative to ISTD	R.T.
18.50	2.51 ng	92722	Phenanthrene-d10	17.10

Hit#	of	Tentative ID	MW	MolForm	CAS#	Qual
1	5	9,10-Anthracenedione	208	C14H8O2	000084-65-1	96
2		Benzo[c]cinnoline	180	C12H8N2	000230-17-1	83
3		Benzo[h]cinnoline	180	C12H8N2	000230-31-9	60
4		1H-Phenalen-1-one	180	C13H8O	000548-39-0	60
5		9H-Fluoren-9-one	180	C13H8O	000486-25-9	60



Data Path : Z:\SVOASRV\HPCHEM1\BNA P\DATA\BP010320\
 Data File : BP001517.D
 Acq On : 03 Jan 2020 20:39
 Operator : JU
 Sample : K6482-04
 Misc :
 ALS Vial : 8 Sample Multiplier: 1

Instrument :
 BNA_P
 ClientSampleID :
 MC-123119-2-5-COMP-B6

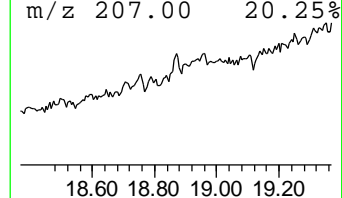
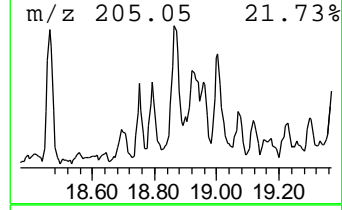
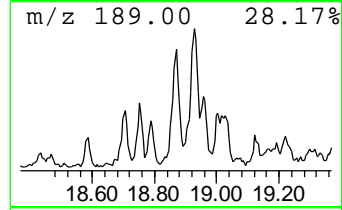
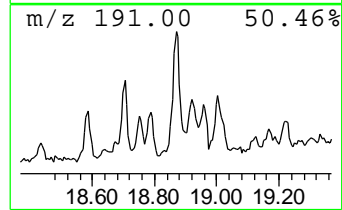
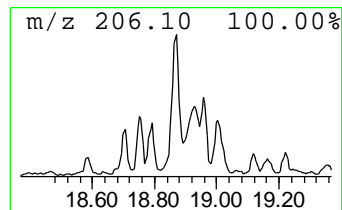
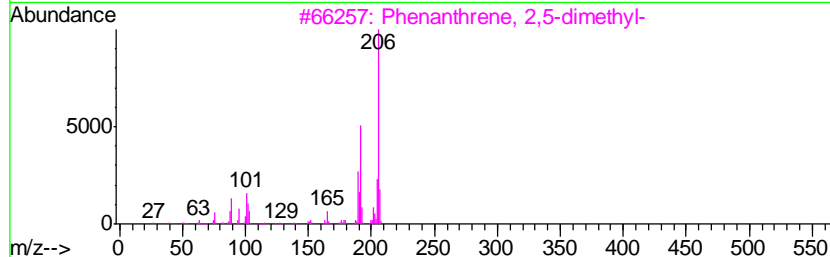
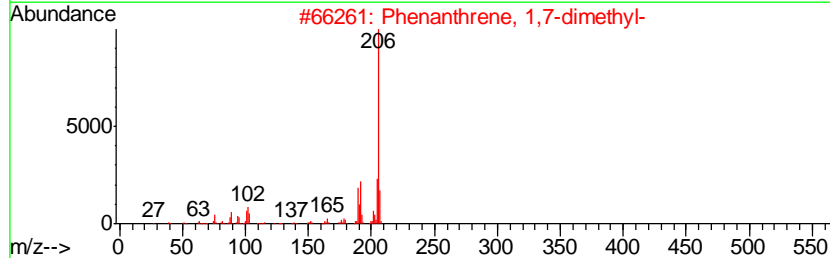
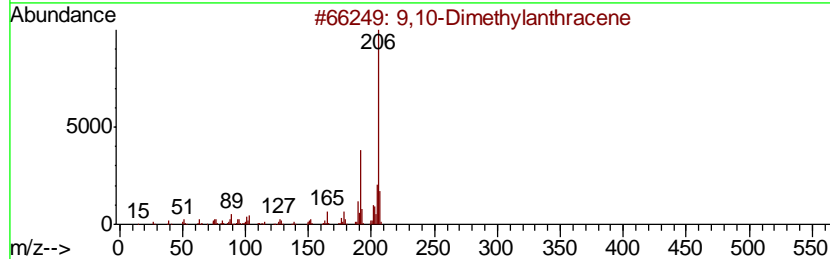
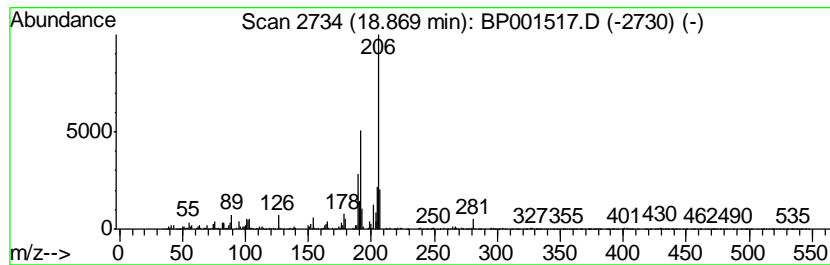
Quant Method : Z:\SVOASRV\HPCHEM1\BNA P\METHODS\8270-BP010320.M
 Quant Title : ASP BNA STANDARDS FOR 5 POINT CALIBRATION

TIC Library : C:\DATABASE\NIST11.L
 TIC Integration Parameters: LSCINT.P

 Peak Number 15 9,10-Dimethylantracene Concentration Rank 12

R.T.	EstConc	Area	Relative to ISTD	R.T.
18.87	5.01 ng	184597	Phenanthrene-d10	17.10

Hit#	of	Tentative ID	MW	MolForm	CAS#	Qual
1	5	9,10-Dimethylantracene	206	C16H14	000781-43-1	91
2		Phenanthrene, 1,7-dimethyl-	206	C16H14	000483-87-4	90
3		Phenanthrene, 2,5-dimethyl-	206	C16H14	003674-66-6	87
4		Phenanthrene, 3,6-dimethyl-	206	C16H14	001576-67-6	87
5		Phenanthrene, 2,3-dimethyl-	206	C16H14	003674-65-5	87



Data Path : Z:\SVOASRV\HPCHEM1\BNA P\DATA\BP010320\
 Data File : BP001517.D
 Acq On : 03 Jan 2020 20:39
 Operator : JU
 Sample : K6482-04
 Misc :
 ALS Vial : 8 Sample Multiplier: 1

Instrument :
 BNA_P
 ClientSampled :
 MC-123119-2-5-COMP-B6

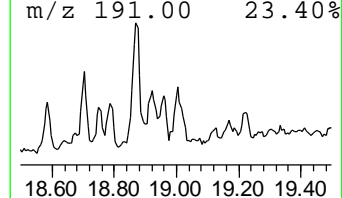
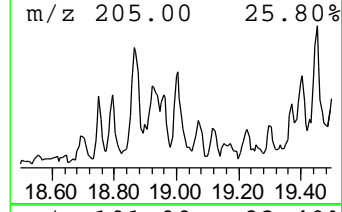
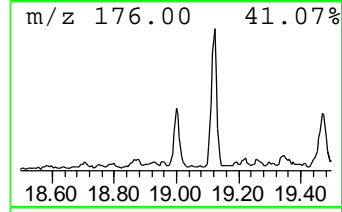
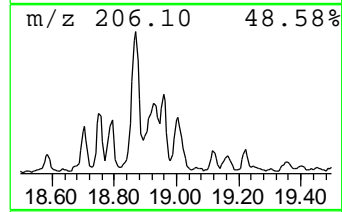
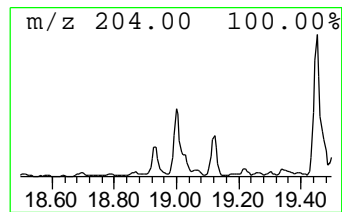
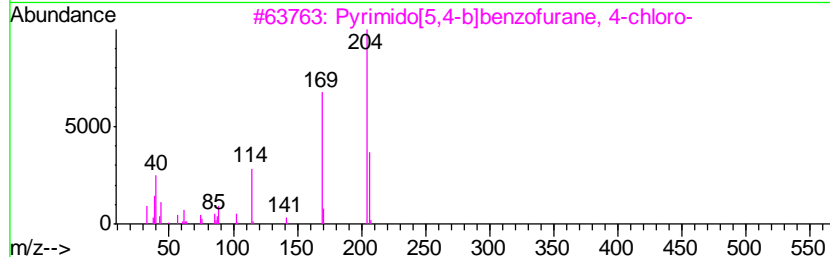
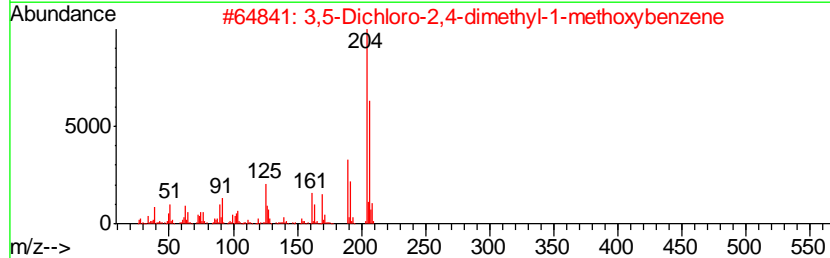
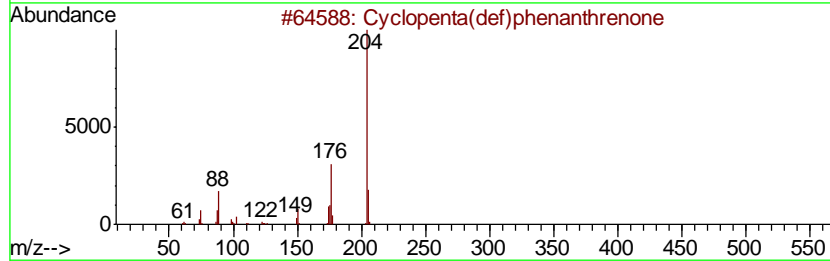
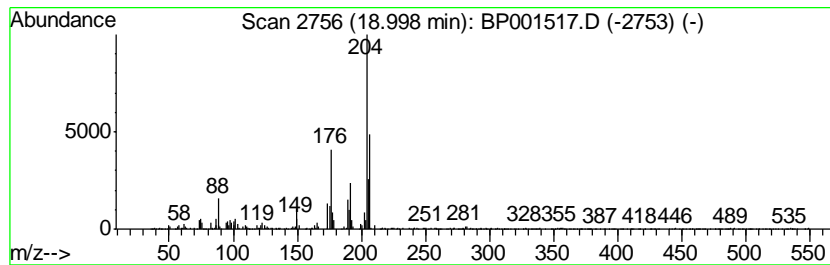
Quant Method : Z:\SVOASRV\HPCHEM1\BNA P\METHODS\8270-BP010320.M
 Quant Title : ASP BNA STANDARDS FOR 5 POINT CALIBRATION

TIC Library : C:\DATABASE\NIST11.L
 TIC Integration Parameters: LSCINT.P

 Peak Number 16 Cyclopenta(def)phenanthrenone Concentration Rank 13

R.T.	EstConc	Area	Relative to ISTD	R.T.
19.00	4.65 ng	171540	Phenanthrene-d10	17.10

Hit#	of	Tentative ID	MW	MolForm	CAS#	Qual
1	5	Cyclopenta(def)phenanthrenone	204	C15H8O	005737-13-3	70
2		3,5-Dichloro-2,4-dimethyl-1-meth...	204	C9H10Cl2O	1000250-17-8	49
3		Pyrimido[5,4-b]benzofurane, 4-ch...	204	C10H5ClN2O	039876-88-5	43
4		2-Chloro-4-phenylphenol	204	C12H9ClO	000092-04-6	43
5		1,2,4,8-Tetramethylbicyclo[6.3.0...	204	C15H24	137235-51-9	41



Data Path : Z:\SVOASRV\HPCHEM1\BNA P\DATA\BP010320\
 Data File : BP001517.D
 Acq On : 03 Jan 2020 20:39
 Operator : JU
 Sample : K6482-04
 Misc :
 ALS Vial : 8 Sample Multiplier: 1

Instrument :
 BNA_P
 ClientSampled :
 MC-123119-2-5-COMP-B6

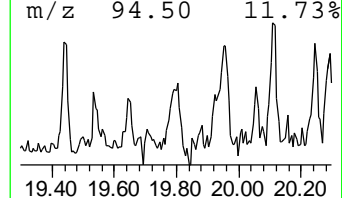
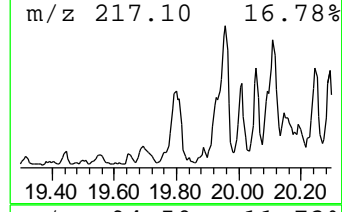
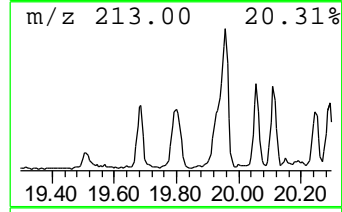
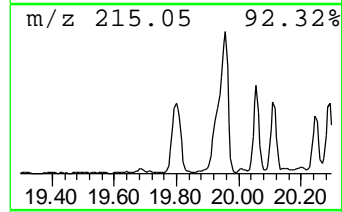
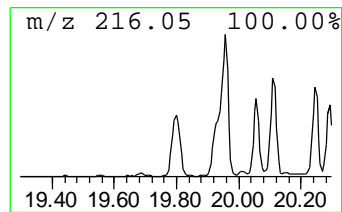
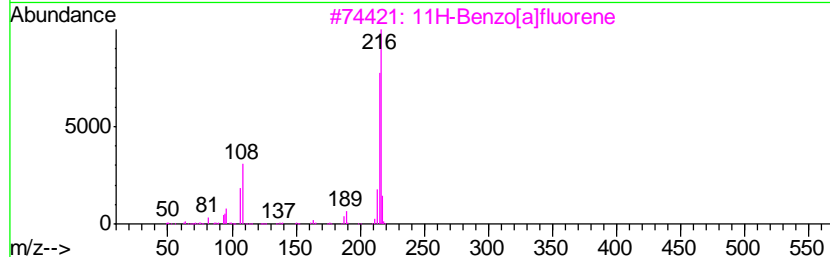
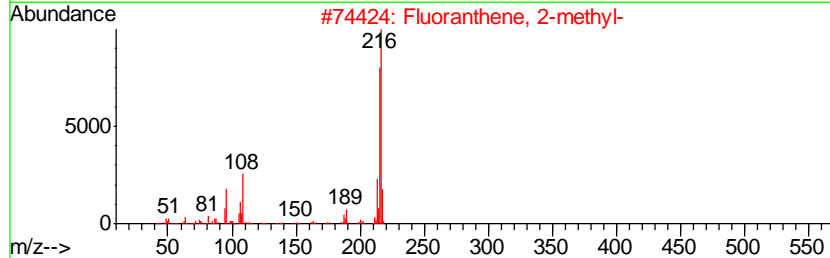
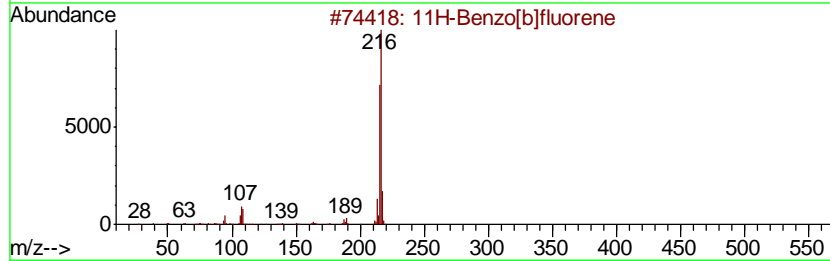
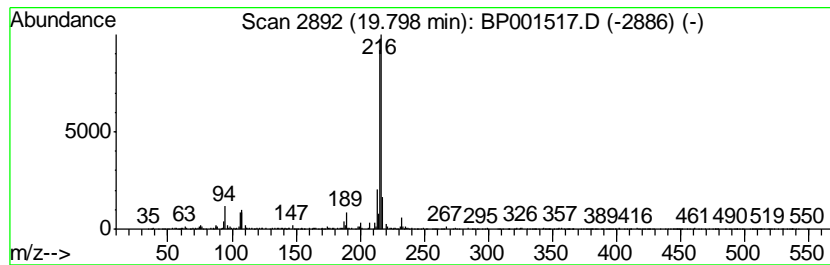
Quant Method : Z:\SVOASRV\HPCHEM1\BNA P\METHODS\8270-BP010320.M
 Quant Title : ASP BNA STANDARDS FOR 5 POINT CALIBRATION

TIC Library : C:\DATABASE\NIST11.L
 TIC Integration Parameters: LSCINT.P

 Peak Number 17 11H-Benzo[b]fluorene Concentration Rank 18

R.T.	EstConc	Area	Relative to ISTD	R.T.
19.80	3.10 ng	356719	Chrysene-d12	21.20

Hit#	of	Tentative ID	MW	MolForm	CAS#	Qual
1	5	11H-Benzo[b]fluorene	216	C17H12	000243-17-4	94
2		Fluoranthene, 2-methyl-	216	C17H12	033543-31-6	87
3		11H-Benzo[a]fluorene	216	C17H12	000238-84-6	83
4		Pyrene, 1-methyl-	216	C17H12	002381-21-7	64
5		Pyrene, 2-methyl-	216	C17H12	003442-78-2	64



Data Path : Z:\SVOASRV\HPCHEM1\BNA P\DATA\BP010320\
 Data File : BP001517.D
 Acq On : 03 Jan 2020 20:39
 Operator : JU
 Sample : K6482-04
 Misc :
 ALS Vial : 8 Sample Multiplier: 1

Instrument :
 BNA_P
 ClientSampleId :
 MC-123119-2-5-COMP-B6

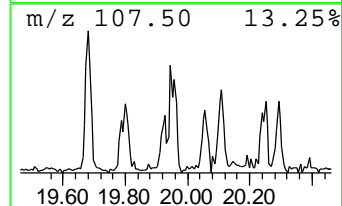
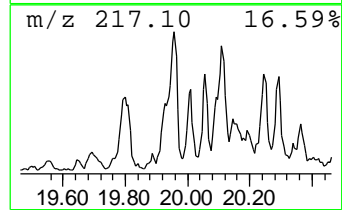
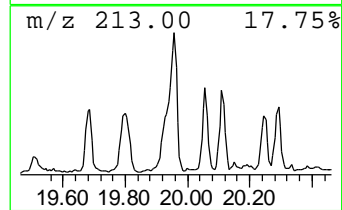
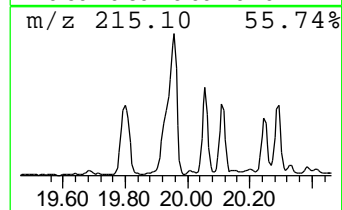
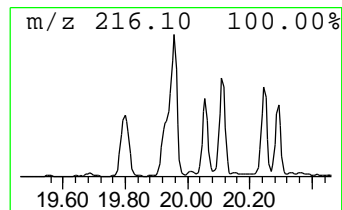
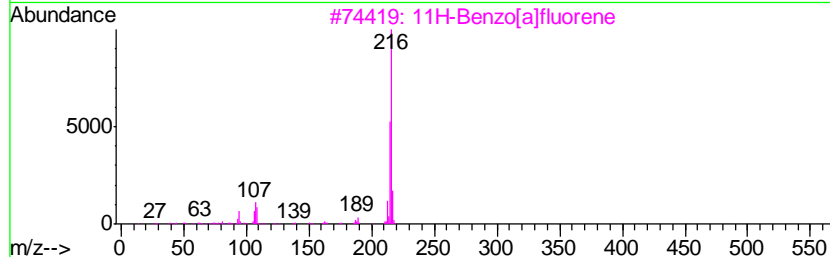
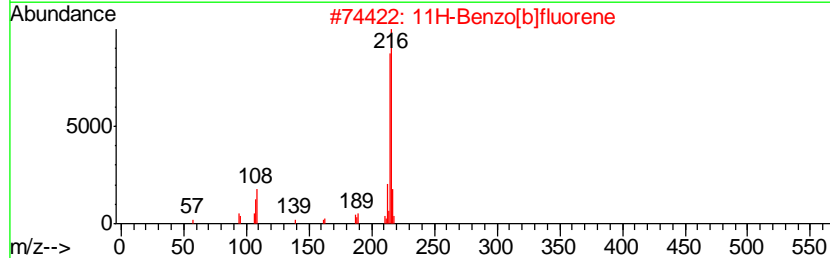
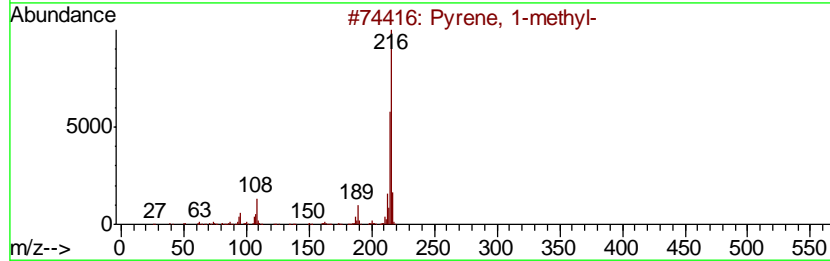
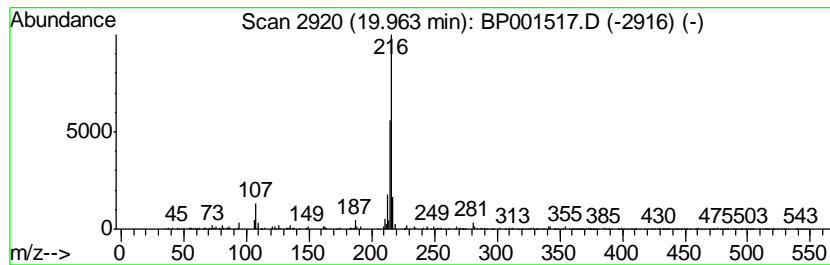
Quant Method : Z:\SVOASRV\HPCHEM1\BNA P\METHODS\8270-BP010320.M
 Quant Title : ASP BNA STANDARDS FOR 5 POINT CALIBRATION

TIC Library : C:\DATABASE\NIST11.L
 TIC Integration Parameters: LSCINT.P

 Peak Number 18 Pyrene, 1-methyl- Concentration Rank 17

R.T.	EstConc	Area	Relative to ISTD	R.T.
19.96	3.36 ng	387293	Chrysene-d12	21.20

Hit#	of	Tentative ID	MW	MolForm	CAS#	Qual
1	5	Pyrene, 1-methyl-	216	C17H12	002381-21-7	93
2		11H-Benzo[b]fluorene	216	C17H12	000243-17-4	90
3		11H-Benzo[a]fluorene	216	C17H12	000238-84-6	83
4		Fluoranthene, 2-methyl-	216	C17H12	033543-31-6	81
5		Pyrene, 4-methyl-	216	C17H12	003353-12-6	64



Data Path : Z:\SVOASRV\HPCHEM1\BNA P\DATA\BP010320\
 Data File : BP001517.D
 Acq On : 03 Jan 2020 20:39
 Operator : JU
 Sample : K6482-04
 Misc :
 ALS Vial : 8 Sample Multiplier: 1

Instrument :
 BNA_P
 ClientSampleID :
 MC-123119-2-5-COMP-B6

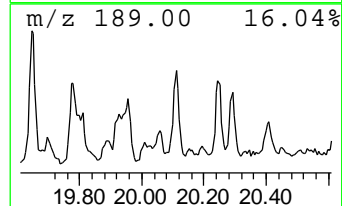
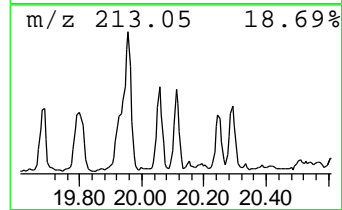
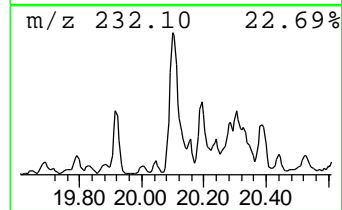
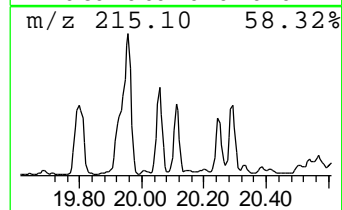
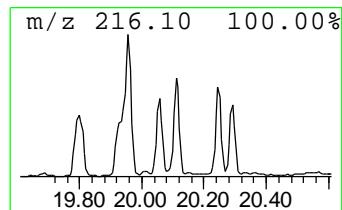
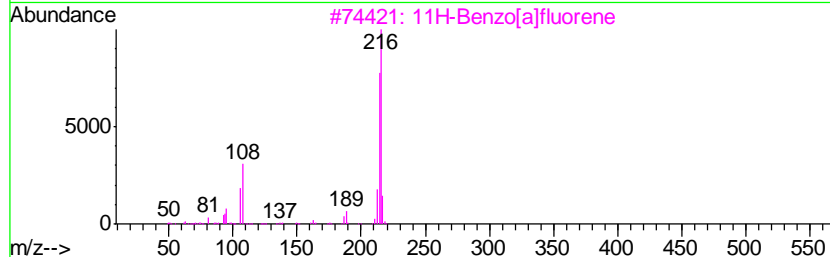
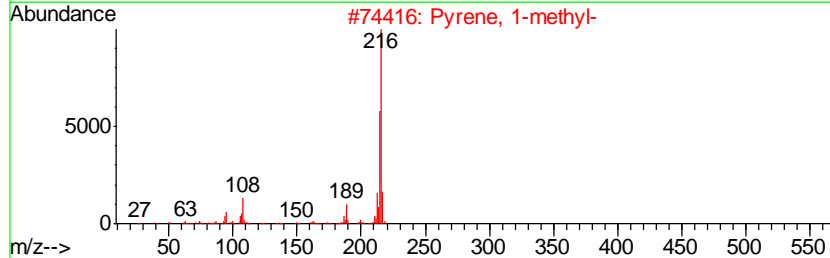
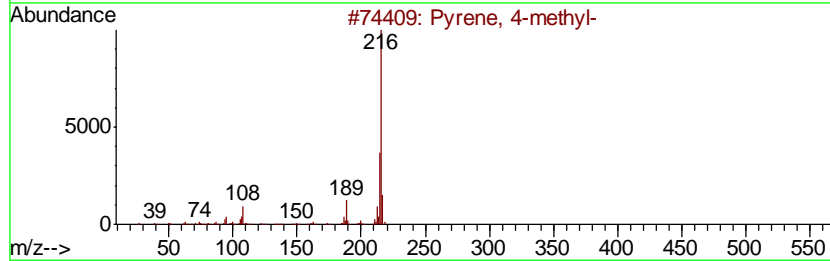
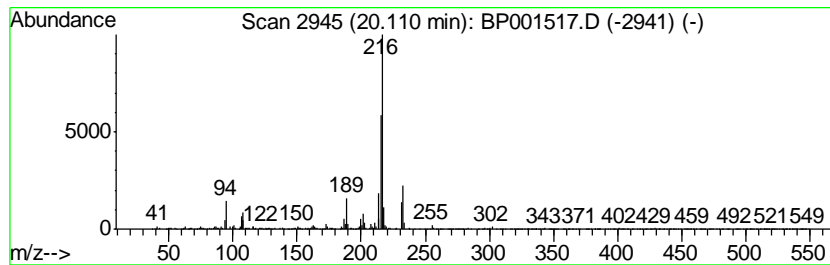
Quant Method : Z:\SVOASRV\HPCHEM1\BNA P\METHODS\8270-BP010320.M
 Quant Title : ASP BNA STANDARDS FOR 5 POINT CALIBRATION

TIC Library : C:\DATABASE\NIST11.L
 TIC Integration Parameters: LSCINT.P

 Peak Number 19 Pyrene, 4-methyl- Concentration Rank 16

R.T.	EstConc	Area	Relative to ISTD	R.T.
20.11	3.43 ng	395044	Chrysene-d12	21.20

Hit#	of	Tentative ID	MW	MolForm	CAS#	Qual
1	5	Pyrene, 4-methyl-	216	C17H12	003353-12-6	91
2		Pyrene, 1-methyl-	216	C17H12	002381-21-7	70
3		11H-Benzo[a]fluorene	216	C17H12	000238-84-6	64
4		Pyrene, 2-methyl-	216	C17H12	003442-78-2	62
5		Fluoranthene, 2-methyl-	216	C17H12	033543-31-6	52



Data Path : Z:\SVOASRV\HPCHEM1\BNA P\DATA\BP010320\
 Data File : BP001517.D
 Acq On : 03 Jan 2020 20:39
 Operator : JU
 Sample : K6482-04
 Misc :
 ALS Vial : 8 Sample Multiplier: 1

Instrument :
 BNA_P
 ClientSampleId :
 MC-123119-2-5-COMP-B6

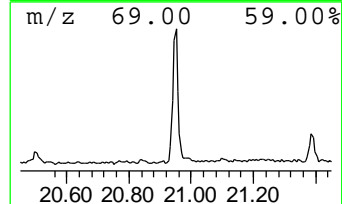
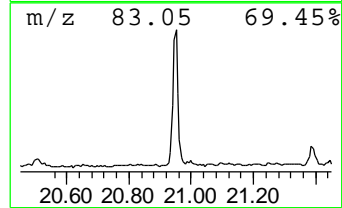
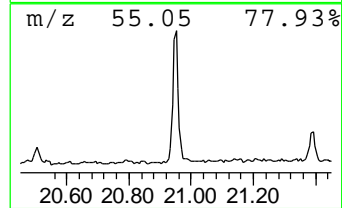
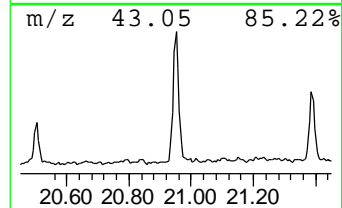
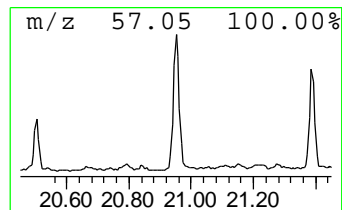
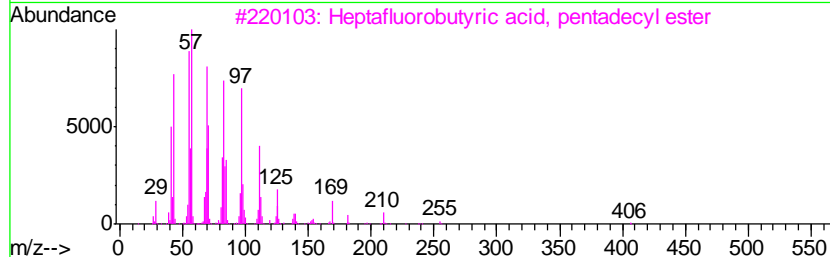
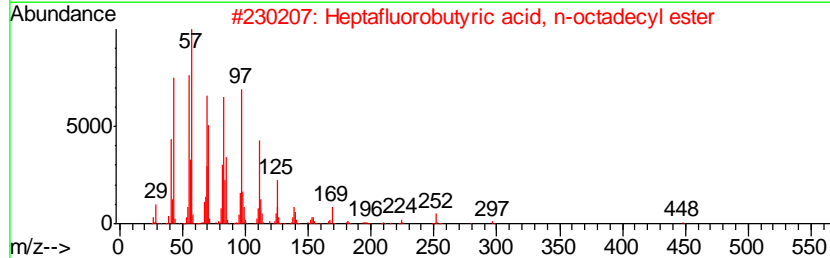
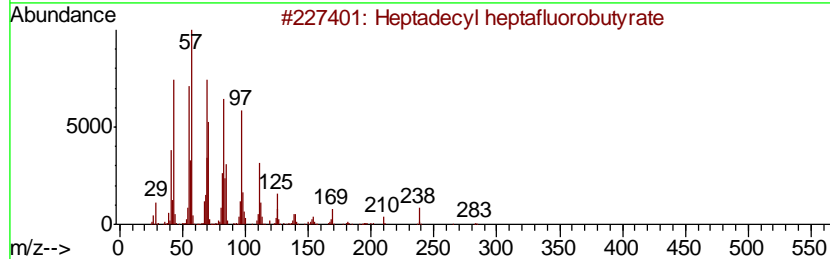
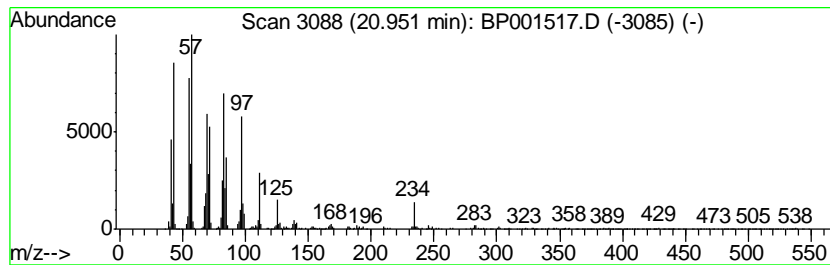
Quant Method : Z:\SVOASRV\HPCHEM1\BNA P\METHODS\8270-BP010320.M
 Quant Title : ASP BNA STANDARDS FOR 5 POINT CALIBRATION

TIC Library : C:\DATABASE\NIST11.L
 TIC Integration Parameters: LSCINT.P

 Peak Number 20 Heptadecyl heptafluorobutyrate Concentration Rank 15

R.T.	EstConc	Area	Relative to ISTD	R.T.
20.95	3.91 ng	450238	Chrysene-d12	21.20

Hit#	of	Tentative ID	MW	MolForm	CAS#	Qual
1	5	Heptadecyl heptafluorobutyrate	452	C21H35F7O2	959085-66-6	90
2		Heptafluorobutyric acid, n-octad...	466	C22H37F7O2	000400-57-7	90
3		Heptafluorobutyric acid, pentade...	424	C19H31F7O2	959261-23-5	90
4		Octacosanol	410	C28H58O	000557-61-9	90
5		17-Pentatriacontene	491	C35H70	006971-40-0	87



Data Path : Z:\SVOASRV\HPCHEM1\BNA_P\DATA\BP010320\
 Data File : BP001517.D
 Acq On : 03 Jan 2020 20:39
 Operator : JU
 Sample : K6482-04
 Misc :
 ALS Vial : 8 Sample Multiplier: 1

Instrument :
 BNA_P
 ClientSampleId :
 MC-123119-2-5-COMP-B6

Quant Method : Z:\SVOASRV\HPCHEM1\BNA_P\METHODS\8270-BP010320.M
 Quant Title : ASP BNA STANDARDS FOR 5 POINT CALIBRATION

TIC Library : C:\DATABASE\NIST11.L
 TIC Integration Parameters: LSCINT.P

TIC Top Hit name	RT	EstConc	Units	Response	--Internal Standard--			
					#	RT	Resp	Conc
Butane, 2-methoxy...	3.02	21.8	ng	452969	1	7.70	415256	20.0
2-Pentanone, 4-hy...	4.92	16.2	ng	336123	1	7.70	415256	20.0
unknown7.25	7.25	76.4	ng	1586240	1	7.70	415256	20.0
unknown16.85	16.85	2.4	ng	88802	4	17.10	737395	20.0
Phenanthrene, 1-m...	17.97	6.0	ng	222120	4	17.10	737395	20.0
Anthracene, 2-met...	18.02	8.9	ng	327408	4	17.10	737395	20.0
n-Hexadecanoic acid	18.05	5.8	ng	214085	4	17.10	737395	20.0
Phenanthrene, 2-m...	18.10	4.4	ng	162062	4	17.10	737395	20.0
4H-Cyclopenta[def...	18.16	12.2	ng	448014	4	17.10	737395	20.0
1H-Cyclopropa[l]p...	18.19	5.0	ng	184609	4	17.10	737395	20.0
Naphthalene, 2-ph...	18.46	5.0	ng	185384	4	17.10	737395	20.0
9,10-Anthracenedione	18.50	2.5	ng	92722	4	17.10	737395	20.0
9,10-Dimethylanth...	18.87	5.0	ng	184597	4	17.10	737395	20.0
Cyclopenta(def)ph...	19.00	4.7	ng	171540	4	17.10	737395	20.0
11H-Benzo[b]fluorene	19.80	3.1	ng	356719	5	21.20	2303170	20.0
Pyrene, 1-methyl-	19.96	3.4	ng	387293	5	21.20	2303170	20.0
Pyrene, 4-methyl-	20.11	3.4	ng	395044	5	21.20	2303170	20.0
Heptadecyl heptaf...	20.95	3.9	ng	450238	5	21.20	2303170	20.0