

Data Path : Z:\svoasrv\HPCHEM1\BNA_P\Data\BP011924\
 Data File : BP019404.D
 Acq On : 19 Jan 2024 16:23
 Operator : MA/JU
 Sample : PB158501BL
 Misc :
 ALS Vial : 10 Sample Multiplier: 1

Instrument :
 BNA_P
 ClientSampleId :
 SBLK501

Integration Parameters: LSCINT.P

Integrator: RTE
 Smoothing : OFF Filtering: 5
 Sampling : 1 Min Area: 0.1 % of largest Peak
 Start Thrs: 0.2 Max Peaks: 100
 Stop Thrs : 0 Peak Location: TOP

If leading or trailing edge < 100 prefer < Baseline drop else tangent >
 Peak separation: 5

Method : Z:\svoasrv\HPCHEM1\BNA_P\Methods\SFAM-EPA-BP010824.MA.M
 Title : SVOA CALIBRATION

Signal : TIC: BP019404.D\data.ms

peak #	R.T. min	first scan	max scan	last scan	PK TY	peak height	corr. area	corr. % max.	% of total
1	3.211	18	21	30	rVB	29622	43238	1.32%	0.138%
2	3.634	89	93	111	rBV	371092	605573	18.56%	1.934%
3	4.099	170	172	176	rBV5	2551	3922	0.12%	0.013%
4	6.963	651	659	673	rBV	451822	762480	23.36%	2.435%
5	7.111	678	684	694	rBV	369060	577888	17.71%	1.845%
6	7.305	709	717	728	rBV	466499	744074	22.80%	2.376%
7	7.769	787	796	804	rBV	390874	613044	18.78%	1.958%
8	8.499	913	920	932	rBV	580210	959160	29.39%	3.063%
9	8.940	987	995	1006	rBV	484860	795991	24.39%	2.542%
10	9.657	1110	1117	1129	rBV	417885	687745	21.07%	2.196%
11	10.199	1200	1209	1227	rBV	580800	1045943	32.05%	3.340%
12	10.563	1263	1271	1282	rBV	535972	889821	27.27%	2.841%
13	10.716	1288	1297	1320	rBV	555264	1034246	31.69%	3.303%
14	12.175	1538	1545	1553	rVB3	8247	17549	0.54%	0.056%
15	13.316	1731	1739	1747	rBV4	11416	21132	0.65%	0.067%
16	13.840	1818	1828	1841	rBV	1179427	1698887	52.06%	5.425%
17	14.110	1866	1874	1885	rBV	1267449	1846988	56.59%	5.898%
18	14.416	1919	1926	1936	rBV	885546	1299890	39.83%	4.151%
19	14.663	1962	1968	1993	rBV	311843	663537	20.33%	2.119%
20	15.410	2088	2095	2105	rBV	1670755	2424712	74.30%	7.743%
21	15.551	2112	2119	2132	rBV	511681	764145	23.41%	2.440%
22	15.651	2133	2136	2142	rVB4	8277	13800	0.42%	0.044%
23	16.198	2226	2229	2234	rVB5	5993	8452	0.26%	0.027%
24	16.857	2337	2341	2345	rBV6	2640	4555	0.14%	0.015%
25	16.969	2350	2360	2364	rBV9	4139	11382	0.35%	0.036%
26	17.175	2388	2395	2405	rBV	1189951	1703600	52.20%	5.440%
27	17.275	2405	2412	2429	rVV	1930551	2702583	82.81%	8.630%
28	19.098	2718	2722	2729	rVB2	27464	34782	1.07%	0.111%
29	19.169	2730	2734	2739	rBV	18437	27704	0.85%	0.088%
30	19.522	2788	2794	2805	rBV	2535140	3263567	100.00%	10.421%
31	21.280	3088	3093	3102	rBV	1313790	1768269	54.18%	5.646%
32	23.486	3461	3468	3478	rVB	1427702	2736968	83.86%	8.740%
33	23.639	3487	3494	3502	rVB	761786	1540919	47.22%	4.920%

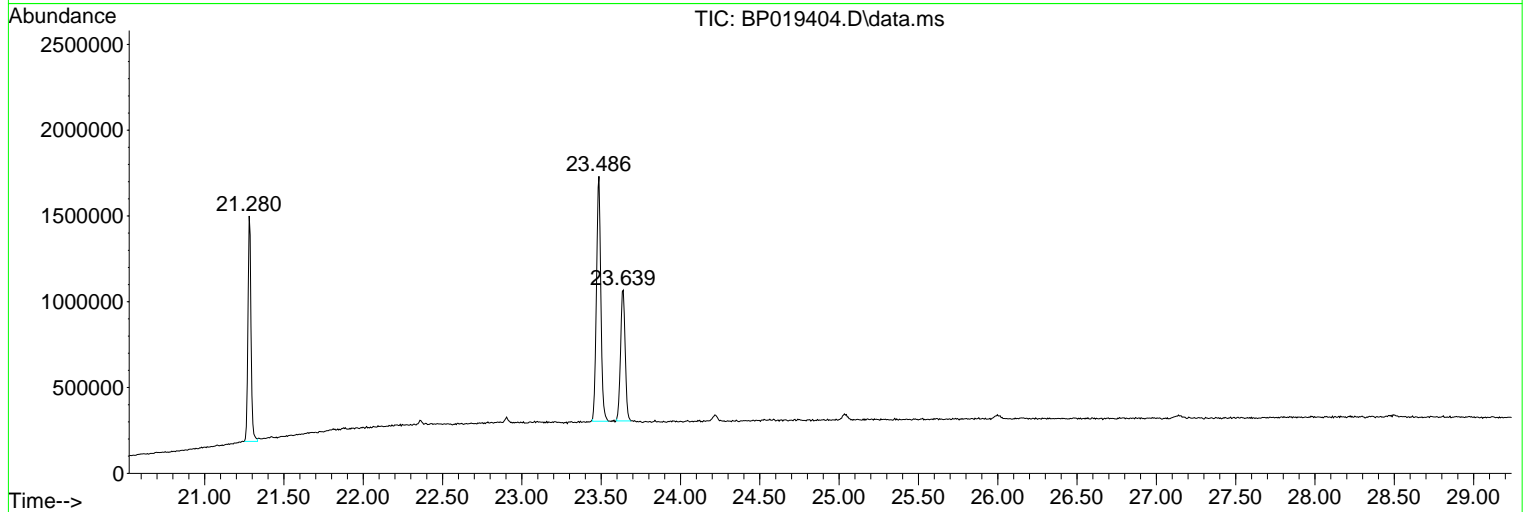
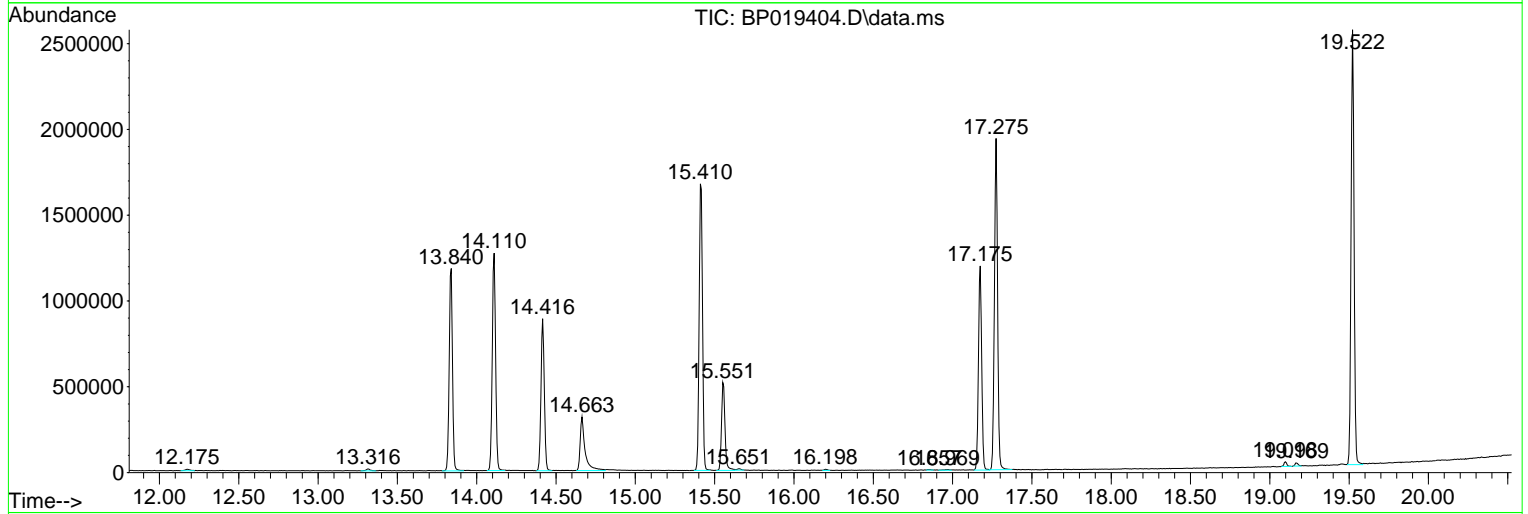
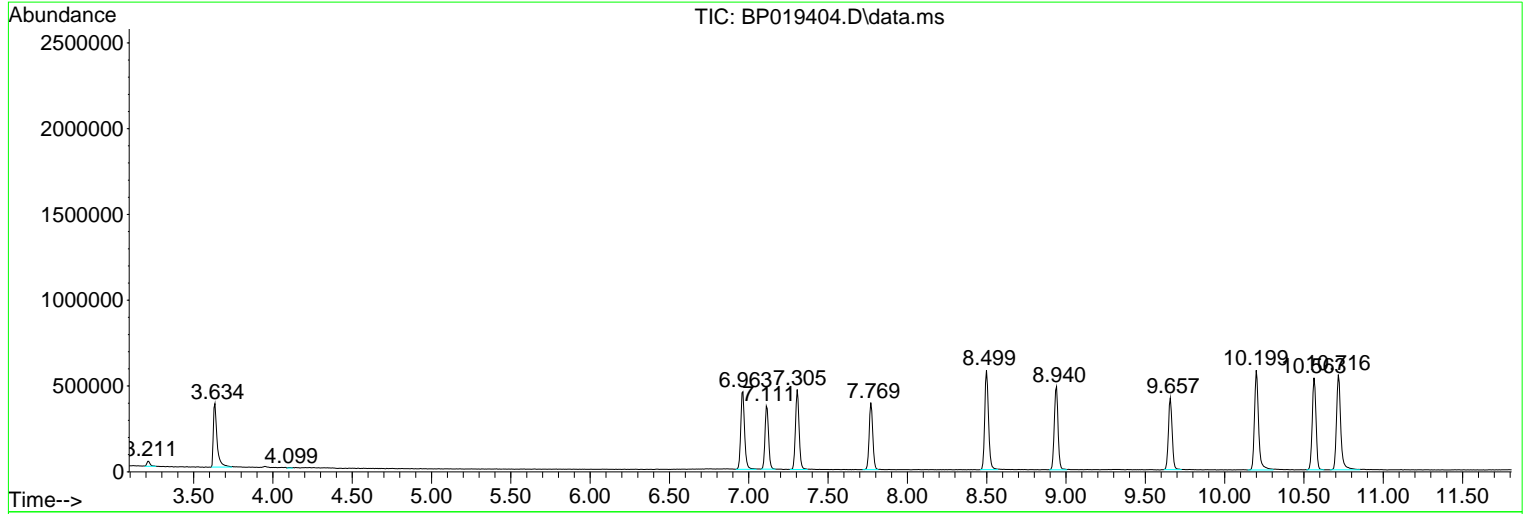
Sum of corrected areas: 31316546

Data Path : Z:\svoasrv\HPCHEM1\BNA_P\Data\BP011924\
 Data File : BP019404.D
 Acq On : 19 Jan 2024 16:23
 Operator : MA/JU
 Sample : PB158501BL
 Misc :
 ALS Vial : 10 Sample Multiplier: 1

Instrument :
 BNA_P
 ClientSampleId :
 SBLK501

Quant Method : Z:\svoasrv\HPCHEM1\BNA_P\Methods\SFAM-EPA-BP010824.MA.M
 Quant Title : SVOA CALIBRATION

TIC Library : C:\DATABASE\NIST20.L
 TIC Integration Parameters: LSCINT.P



Data Path : Z:\svoasrv\HPCHEM1\BNA_P\Data\BP011924\
Data File : BP019404.D
Acq On : 19 Jan 2024 16:23
Operator : MA/JU
Sample : PB158501BL
Misc :
ALS Vial : 10 Sample Multiplier: 1

Instrument :
BNA_P
ClientSampleId :
SBLK501

Quant Method : Z:\svoasrv\HPCHEM1\BNA_P\Methods\SFAM-EPA-BP010824.MA.M
Quant Title : SVOA CALIBRATION

TIC Library : C:\DATABASE\NIST20.L
TIC Integration Parameters: LSCINT.P

No Library Search Compounds Detected

Data Path : Z:\svoasrv\HPCHEM1\BNA_P\Data\BP011924\
Data File : BP019404.D
Acq On : 19 Jan 2024 16:23
Operator : MA/JU
Sample : PB158501BL
Misc :
ALS Vial : 10 Sample Multiplier: 1

Instrument :
BNA_P
ClientSampleId :
SBLK501

Quant Method : Z:\svoasrv\HPCHEM1\BNA_P\Methods\SFAM-EPA-BP010824.MA.M
Quant Title : SVOA CALIBRATION

TIC Library : C:\DATABASE\NIST20.L
TIC Integration Parameters: LSCINT.P

TIC Top Hit name	RT	EstConc	Units	Response	#	RT	Resp	Conc
------------------	----	---------	-------	----------	---	----	------	------

|--Internal Standard--|