

Data Path : Z:\svoasrv\HPCHEM1\BNA_P\Data\BP013125\
 Data File : BP023830.D
 Acq On : 31 Jan 2025 18:02
 Operator : RC/JU
 Sample : Q1224-13
 Misc :
 ALS Vial : 13 Sample Multiplier: 1

Instrument :
 BNA_P
 ClientSampleId :
 A6320

Quant Time: Feb 03 07:36:15 2025
 Quant Method : Z:\svoasrv\HPCHEM1\BNA_P\Methods\SFAM-EPA-BP012925.MA.M
 Quant Title : SVOA CALIBRATION
 QLast Update : Fri Jan 31 11:40:55 2025
 Response via : Initial Calibration

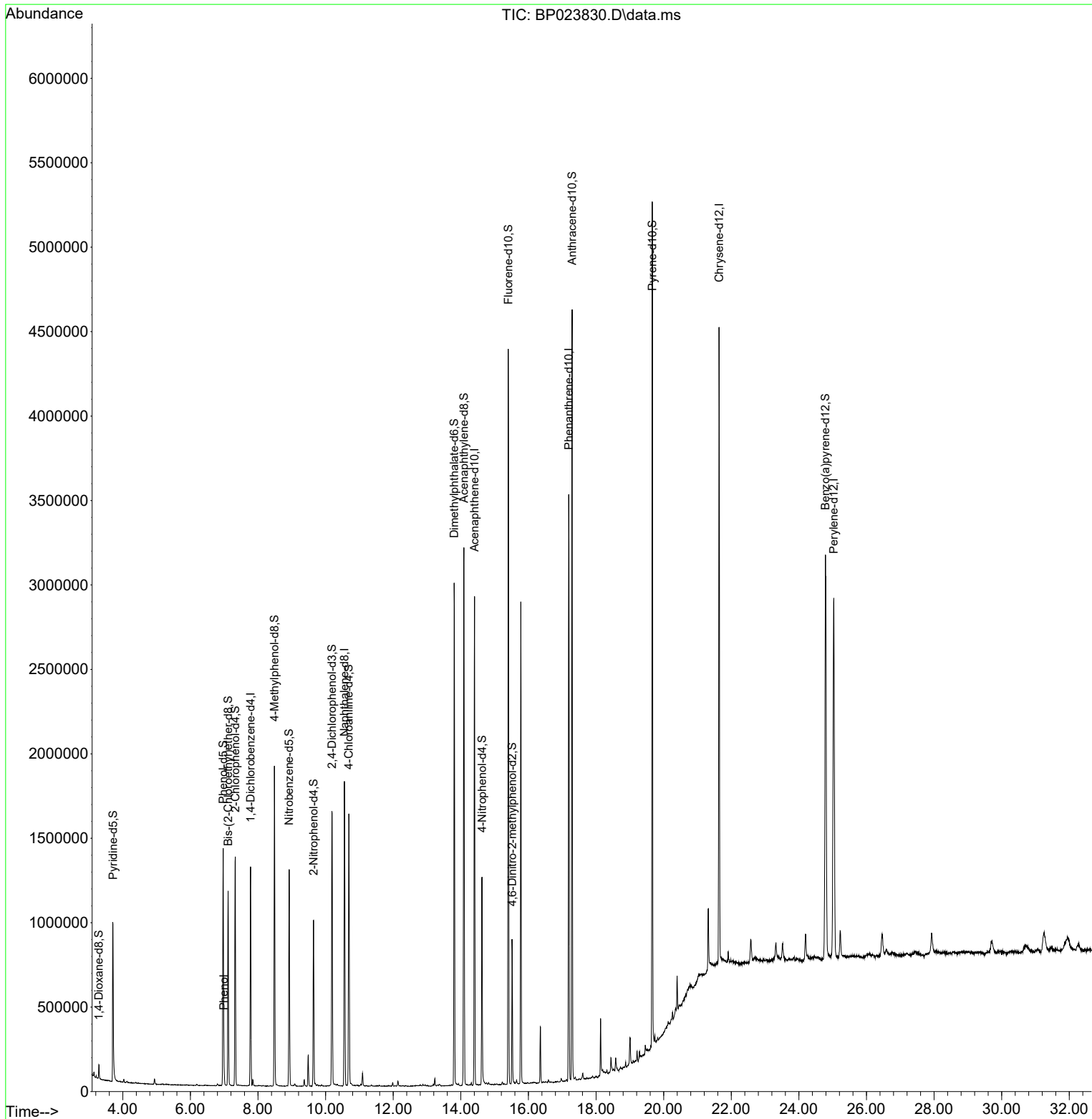
Compound	R.T.	QIon	Response	Conc	Units	Dev(Min)
Internal Standards						
1) 1,4-Dichlorobenzene-d4	7.781	152	355287	20.000	ng/ul	0.02
20) Naphthalene-d8	10.557	136	1507895	20.000	ng/ul	0.01
38) Acenaphthene-d10	14.404	164	997052	20.000	ng/ul	0.00
64) Phenanthrene-d10	17.192	188	2034271	20.000	ng/ul	-0.02
79) Chrysene-d12	21.639	240	2124560	20.000	ng/ul	0.00
88) Perylene-d12	25.033	264	2240707	20.000	ng/ul	0.01
System Monitoring Compounds						
3) 1,4-Dioxane-d8	3.293	96	45004	5.263	ng/uL	0.00
4) Pyridine-d5	3.711	84	584466	23.687	ng/ul	0.02
7) Phenol-d5	6.969	99	832498	26.477	ng/ul	0.02
9) Bis-(2-Chloroethyl)eth...	7.116	67	449365	27.001	ng/ul	0.02
11) 2-Chlorophenol-d4	7.328	132	674124	27.303	ng/ul	0.02
15) 4-Methylphenol-d8	8.487	113	684278	26.642	ng/ul	0.02
21) Nitrobenzene-d5	8.922	128	323541	26.818	ng/ul	0.01
24) 2-Nitrophenol-d4	9.646	143	349375	26.839	ng/ul	0.02
28) 2,4-Dichlorophenol-d3	10.193	165	633857	26.543	ng/ul	0.02
31) 4-Chloroaniline-d4	10.687	131	917100	25.679	ng/ul	0.00
46) Dimethylphthalate-d6	13.804	166	2065162	27.769	ng/ul	0.00
49) Acenaphthylene-d8	14.092	160	2242843	26.739	ng/ul	0.00
54) 4-Nitrophenol-d4	14.628	143	329382	22.301	ng/ul	0.00
60) Fluorene-d10	15.404	176	1636337	26.128	ng/ul	0.00
65) 4,6-Dinitro-2-methylph...	15.522	200	185046	14.745	ng/ul	-0.01
73) Anthracene-d10	17.292	188	2485567	24.885	ng/ul	-0.02
81) Pyrene-d10	19.663	212	2717281	23.870	ng/ul	-0.02
92) Benzo(a)pyrene-d12	24.786	264	2496295	21.352	ng/ul	0.00
Target Compounds						
8) Phenol	6.993	94	51278	1.588	ng/ul	97

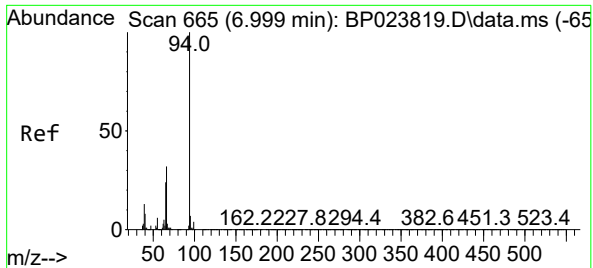
(#) = qualifier out of range (m) = manual integration (+) = signals summed

Data Path : Z:\svoasrv\HPCHEM1\BNA_P\Data\BP013125\
 Data File : BP023830.D
 Acq On : 31 Jan 2025 18:02
 Operator : RC/JU
 Sample : Q1224-13
 Misc :
 ALS Vial : 13 Sample Multiplier: 1

Instrument :
 BNA_P
 ClientSampleId :
 A6320

Quant Time: Feb 03 07:36:15 2025
 Quant Method : Z:\svoasrv\HPCHEM1\BNA_P\Methods\SFAM-EPA-BP012925.MA.M
 Quant Title : SVOA CALIBRATION
 QLast Update : Fri Jan 31 11:40:55 2025
 Response via : Initial Calibration





#8
 Phenol
 Concen: 1.588 ng/ul
 RT: 6.993 min Scan# 60
 Delta R.T. 0.018 min
 Lab File: BP023830.D
 Acq: 31 Jan 2025 18:02

Instrument :
 BNA_P
 ClientSampleId :
 A6320

Tgt Ion: 94 Resp: 51278

Ion	Ratio	Lower	Upper
94	100		
65	25.0	20.1	30.1
66	35.6	26.0	39.0

