

Data Path : Z:\svoasrv\HPCHEM1\BNA_P\Data\BP020722\
 Data File : BP009044.D
 Acq On : 07 Feb 2022 13:26
 Operator : CG/JU
 Sample : SSTDICC060
 Misc :
 ALS Vial : 7 Sample Multiplier: 1

Instrument :
 BNA_P
 ClientSampleId :
 SSTDICC060

Quant Time: Feb 07 14:20:28 2022
 Quant Method : Z:\svoasrv\HPCHEM1\BNA_P\Methods\8270E-BP020722.M
 Quant Title : ASP BNA STANDARDS FOR 5 POINT CALIBRATION
 QLast Update : Mon Feb 07 13:09:18 2022
 Response via : Initial Calibration

Compound	R.T.	QIon	Response	Conc	Units	Dev(Min)	
Internal Standards							
1) 1,4-Dichlorobenzene-d4	7.805	152	247177	20.000	ng	0.00	
21) Naphthalene-d8	10.604	136	937173	20.000	ng	0.00	
39) Acenaphthene-d10	14.451	164	634429	20.000	ng	0.00	
64) Phenanthrene-d10	17.204	188	1340071	20.000	ng	0.00	
76) Chrysene-d12	21.304	240	1096848	20.000	ng	0.00	
86) Perylene-d12	23.692	264	916859	20.000	ng	0.00	
System Monitoring Compounds							
5) 2-Fluorophenol	5.393	112	1599786	113.807	ng	0.00	
7) Phenol-d6	6.993	99	2139689	116.158	ng	0.00	
23) Nitrobenzene-d5	8.969	82	1978705	118.312	ng	0.00	
42) 2,4,6-Tribromophenol	15.951	330	1101429	126.690	ng	0.00	
45) 2-Fluorobiphenyl	13.075	172	5056474	111.264	ng	0.00	
79) Terphenyl-d14	19.769	244	7146675	118.518	ng	0.00	
Target Compounds							
2) 1,4-Dioxane	3.305	88	253934	54.656	ng		98
3) Pyridine	3.705	79	669728	48.552	ng		96
4) n-Nitrosodimethylamine	3.617	42	269115	52.523	ng	#	89
6) Aniline	7.140	93	1239489	59.164	ng		98
8) 2-Chlorophenol	7.375	128	902410	57.024	ng		98
9) Benzaldehyde	6.952	77	449378	50.891	ng		99
10) Phenol	7.016	94	1081694	58.555	ng		96
11) bis(2-Chloroethyl)ether	7.234	93	834522	58.393	ng		97
12) 1,3-Dichlorobenzene	7.693	146	1018179	56.175	ng		99
13) 1,4-Dichlorobenzene	7.840	146	1042007	56.127	ng		98
14) 1,2-Dichlorobenzene	8.157	146	1000402	55.816	ng		100
15) Benzyl Alcohol	8.057	79	748031	63.215	ng		97
16) 2,2'-oxybis(1-Chloropr...	8.340	45	921410	58.101	ng		99
17) 2-Methylphenol	8.263	107	725285	58.544	ng		97
18) Hexachloroethane	8.881	117	349309	57.047	ng		99
19) n-Nitroso-di-n-propyla...	8.622	70	633484	59.569	ng		95
20) 3+4-Methylphenols	8.593	107	1017586	59.717	ng		98
22) Acetophenone	8.634	105	1294329	58.029	ng	#	97
24) Nitrobenzene	9.010	77	932744	59.055	ng		96
25) Isophorone	9.546	82	1706834	60.977	ng		98
26) 2-Nitrophenol	9.722	139	518569	62.059	ng		94
27) 2,4-Dimethylphenol	9.793	122	734266	59.532	ng		99
28) bis(2-Chloroethoxy)met...	10.022	93	1110177	59.500	ng		99
29) 2,4-Dichlorophenol	10.269	162	930611	60.478	ng		100
30) 1,2,4-Trichlorobenzene	10.469	180	1035713	58.072	ng		99
31) Naphthalene	10.657	128	2760247	57.477	ng		100
32) Benzoic acid	10.010	122	669629	68.382	ng		97
33) 4-Chloroaniline	10.775	127	1179415	60.011	ng		99
34) Hexachlorobutadiene	10.940	225	631568	57.622	ng		100
35) Caprolactam	11.598	113	302693	65.567	ng		94
36) 4-Chloro-3-methylphenol	11.916	107	910405	62.040	ng		99
37) 2-Methylnaphthalene	12.269	142	2005939	58.982	ng		98
38) 1-Methylnaphthalene	12.487	142	1962818	58.919	ng		100
40) 1,2,4,5-Tetrachloroben...	12.640	216	1169151	57.778	ng		99
41) Hexachlorocyclopentadiene	12.616	237	435184	84.045	ng		99
43) 2,4,6-Trichlorophenol	12.887	196	829932	60.875	ng		99

Data Path : Z:\svoasrv\HPCHEM1\BNA_P\Data\BP020722\
 Data File : BP009044.D
 Acq On : 07 Feb 2022 13:26
 Operator : CG/JU
 Sample : SSTDICC060
 Misc :
 ALS Vial : 7 Sample Multiplier: 1

Instrument :
 BNA_P
 ClientSampleId :
 SSTDICC060

Quant Time: Feb 07 14:20:28 2022
 Quant Method : Z:\svoasrv\HPCHEM1\BNA_P\Methods\8270E-BP020722.M
 Quant Title : ASP BNA STANDARDS FOR 5 POINT CALIBRATION
 QLast Update : Mon Feb 07 13:09:18 2022
 Response via : Initial Calibration

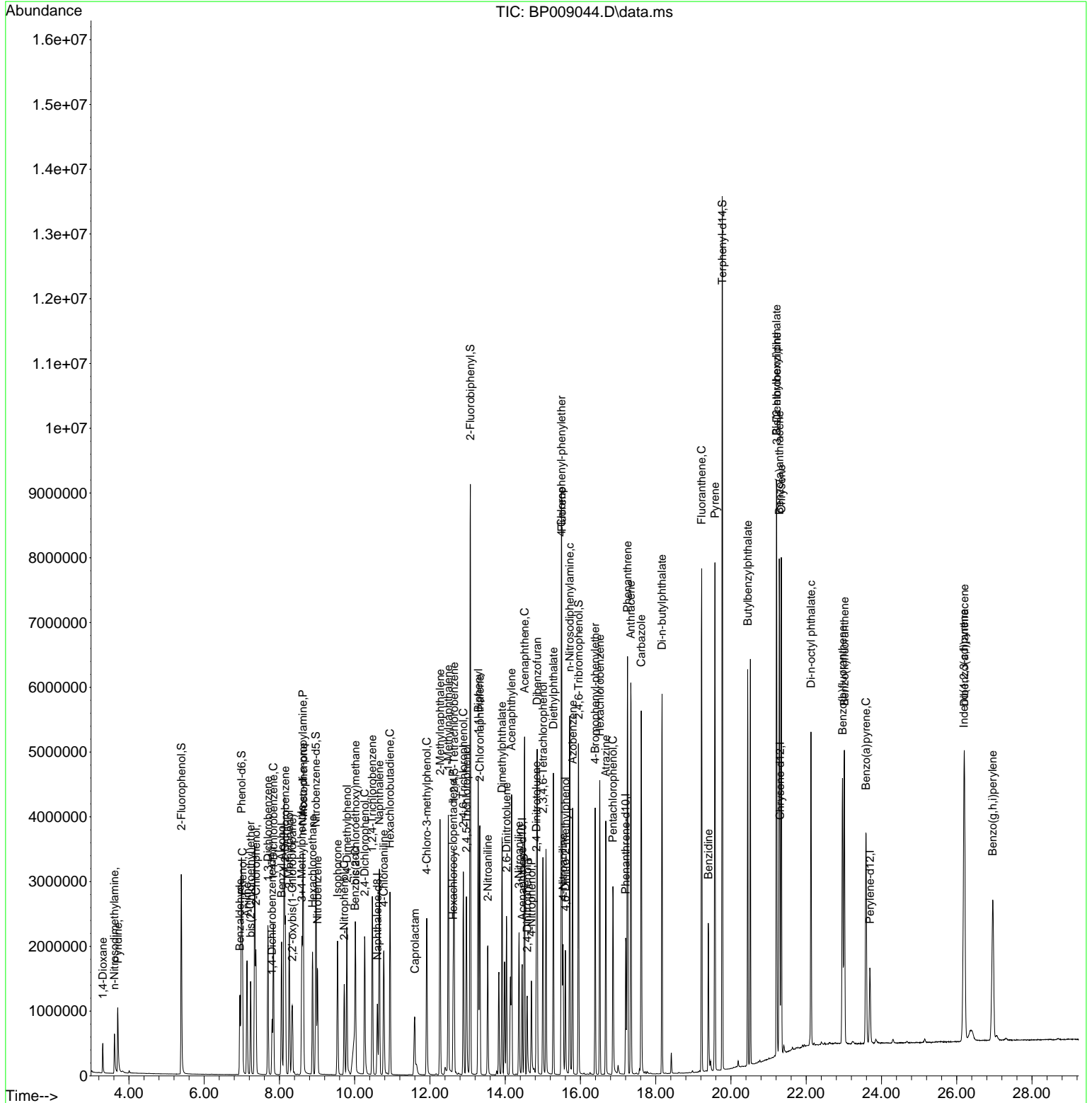
Compound	R.T.	QIon	Response	Conc	Units	Dev(Min)
44) 2,4,5-Trichlorophenol	12.969	196	900579	61.466	ng	98
46) 1,1'-Biphenyl	13.287	154	2647145	56.692	ng	99
47) 2-Chloronaphthalene	13.328	162	2127543	57.054	ng	99
48) 2-Nitroaniline	13.540	65	560036	63.439	ng	97
49) Acenaphthylene	14.169	152	3272325	57.941	ng	100
50) Dimethylphthalate	13.916	163	2728553	59.643	ng	100
51) 2,6-Dinitrotoluene	14.034	165	598025	62.905	ng	92
52) Acenaphthene	14.516	154	1980860	58.095	ng	98
53) 3-Nitroaniline	14.369	138	630856	63.328	ng	97
54) 2,4-Dinitrophenol	14.587	184	365079	69.741	ng	94
55) Dibenzofuran	14.851	168	3296749	57.373	ng	97
56) 4-Nitrophenol	14.698	139	489069	66.419	ng	94
57) 2,4-Dinitrotoluene	14.828	165	813111	64.549	ng	# 89
58) Fluorene	15.504	166	2566640	57.769	ng	95
59) 2,3,4,6-Tetrachlorophenol	15.004	232	761454	59.420	ng	96
60) Diethylphthalate	15.281	149	2616866	60.956	ng	98
61) 4-Chlorophenyl-phenyle...	15.492	204	1415072	58.966	ng	98
62) 4-Nitroaniline	15.539	138	658618	65.072	ng	90
63) Azobenzene	15.792	77	2275006	61.588	ng	96
65) 4,6-Dinitro-2-methylph...	15.604	198	547546	65.423	ng	98
66) n-Nitrosodiphenylamine	15.716	169	2327727	57.091	ng	99
67) 4-Bromophenyl-phenylether	16.392	248	919684	59.278	ng	98
68) Hexachlorobenzene	16.516	284	1015855	58.392	ng	98
69) Atrazine	16.675	200	821904	60.283	ng	99
70) Pentachlorophenol	16.863	266	613614	65.793	ng	99
71) Phenanthrene	17.251	178	4139426	56.811	ng	99
72) Anthracene	17.339	178	4145412	58.271	ng	99
73) Carbazole	17.616	167	4002939	58.460	ng	99
74) Di-n-butylphthalate	18.169	149	4331728	61.929	ng	99
75) Fluoranthene	19.222	202	4792685	59.095	ng	97
77) Benzidine	19.398	184	1436510	60.521	ng	98
78) Pyrene	19.575	202	4855216	63.377	ng	99
80) Butylbenzylphthalate	20.445	149	1775638	65.983	ng	97
81) Benzo(a)anthracene	21.286	228	4082516	57.212	ng	99
82) 3,3'-Dichlorobenzidine	21.216	252	1429102	54.797	ng	98
83) Chrysene	21.339	228	3900020	56.770	ng	98
84) Bis(2-ethylhexyl)phtha...	21.210	149	2330518	64.956	ng	96
85) Di-n-octyl phthalate	22.127	149	3644151	61.035	ng	100
87) Indeno(1,2,3-cd)pyrene	26.192	276	3820438	55.640	ng	97
88) Benzo(b)fluoranthene	22.968	252	3475267	63.019	ng	98
89) Benzo(k)fluoranthene	23.015	252	3271159	58.192	ng	98
90) Benzo(a)pyrene	23.592	252	2729736	57.635	ng	98
91) Dibenzo(a,h)anthracene	26.204	278	3126974	55.361	ng	98
92) Benzo(g,h,i)perylene	26.956	276	3105315	55.002	ng	98

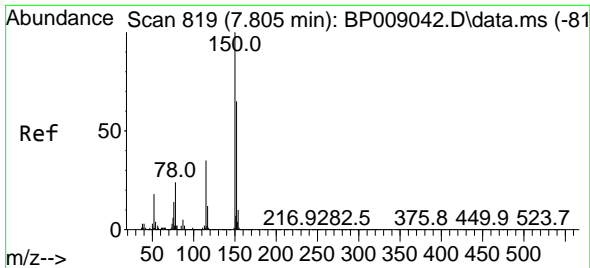
(#) = qualifier out of range (m) = manual integration (+) = signals summed

Data Path : Z:\svoasrv\HPCHEM1\BNA_P\Data\BP020722\
 Data File : BP009044.D
 Acq On : 07 Feb 2022 13:26
 Operator : CG/JU
 Sample : SSTDICC060
 Misc :
 ALS Vial : 7 Sample Multiplier: 1

Instrument :
 BNA_P
 ClientSampleId :
 SSTDICC060

Quant Time: Feb 07 14:20:28 2022
 Quant Method : Z:\svoasrv\HPCHEM1\BNA_P\Methods\8270E-BP020722.M
 Quant Title : ASP BNA STANDARDS FOR 5 POINT CALIBRATION
 QLast Update : Mon Feb 07 13:09:18 2022
 Response via : Initial Calibration

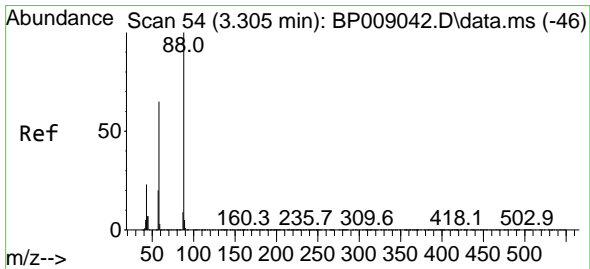
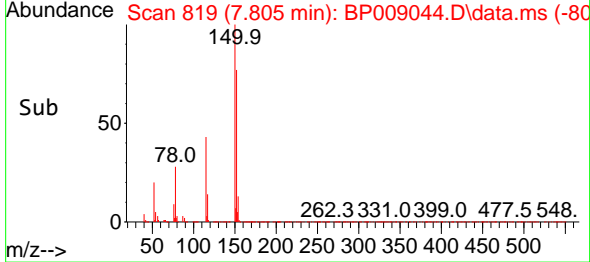
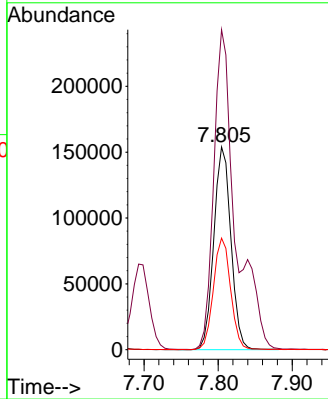
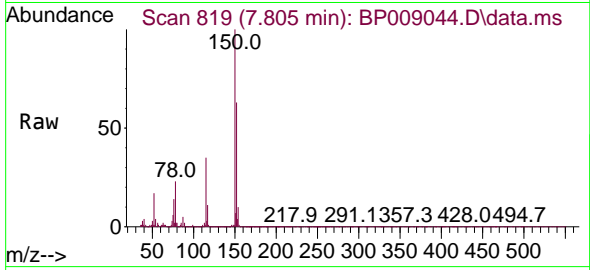




#1
 1,4-Dichlorobenzene-d4
 Concen: 20.000 ng
 RT: 7.805 min Scan# 81
 Delta R.T. -0.000 min
 Lab File: BP009044.D
 Acq: 07 Feb 2022 13:26

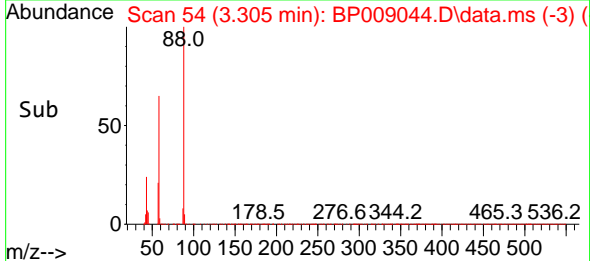
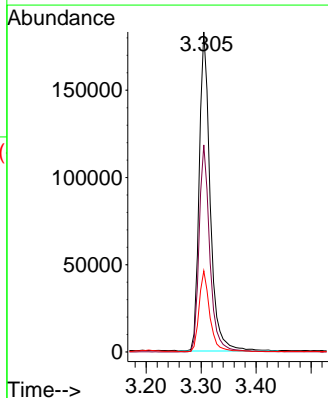
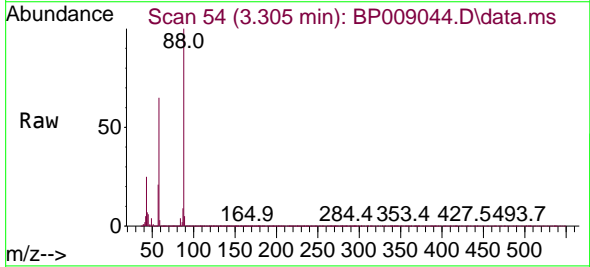
Instrument :
 BNA_P
 ClientSampleId :
 SSTDICC060

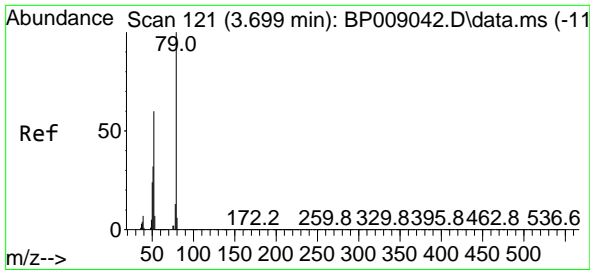
Tgt Ion:152 Resp: 247177
 Ion Ratio Lower Upper
 152 100
 150 157.8 127.0 190.6
 115 55.0 43.7 65.5



#2
 1,4-Dioxane
 Concen: 54.656 ng
 RT: 3.305 min Scan# 54
 Delta R.T. 0.000 min
 Lab File: BP009044.D
 Acq: 07 Feb 2022 13:26

Tgt Ion: 88 Resp: 253934
 Ion Ratio Lower Upper
 88 100
 58 63.8 50.6 75.8
 43 24.5 18.2 27.4

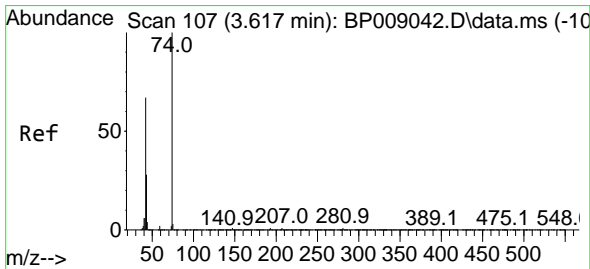
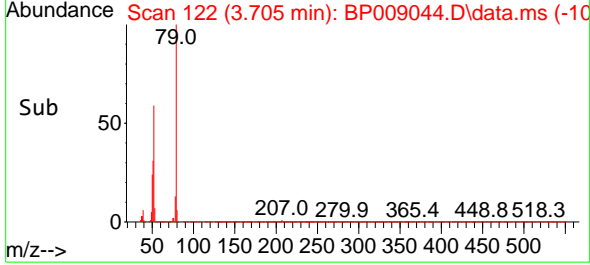
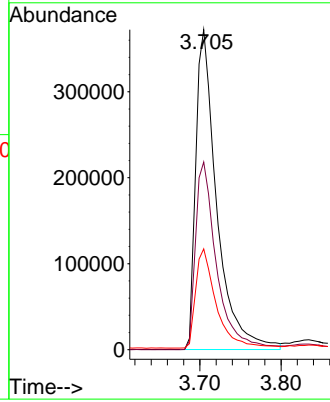
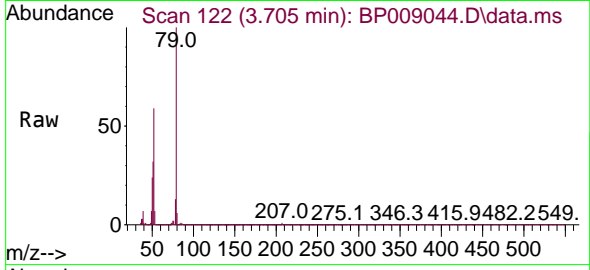




#3
 Pyridine
 Concen: 48.552 ng
 RT: 3.705 min Scan# 11
 Delta R.T. 0.006 min
 Lab File: BP009044.D
 Acq: 07 Feb 2022 13:26

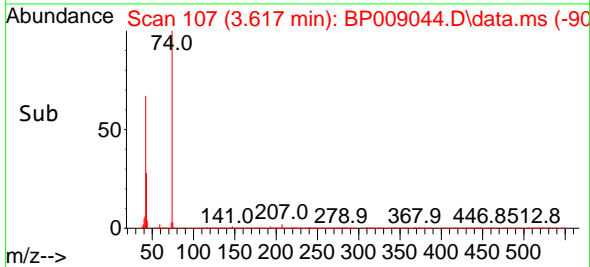
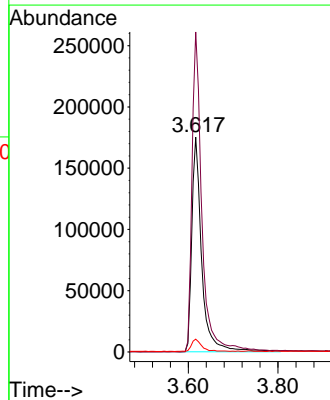
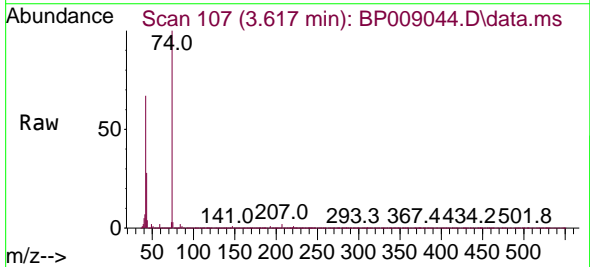
Instrument :
 BNA_P
 ClientSampleId :
 SSTDICC060

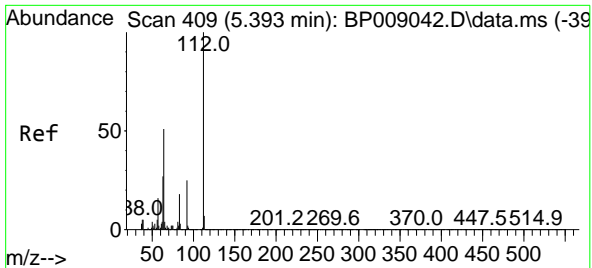
Tgt Ion: 79 Resp: 669728
 Ion Ratio Lower Upper
 79 100
 52 58.6 45.1 67.7
 51 31.5 23.1 34.7



#4
 n-Nitrosodimethylamine
 Concen: 52.523 ng
 RT: 3.617 min Scan# 107
 Delta R.T. 0.000 min
 Lab File: BP009044.D
 Acq: 07 Feb 2022 13:26

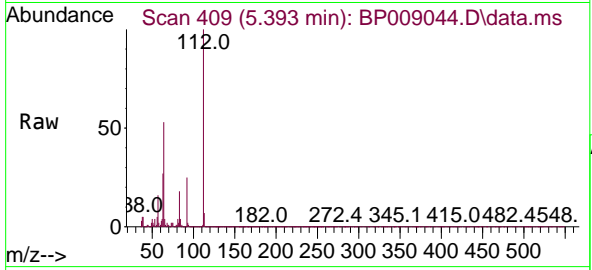
Tgt Ion: 42 Resp: 269115
 Ion Ratio Lower Upper
 42 100
 74 148.9 131.1 196.7
 44 6.0 6.2 9.2#





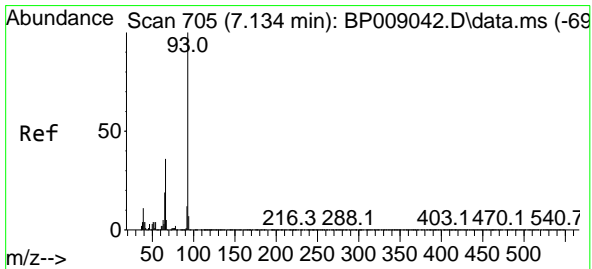
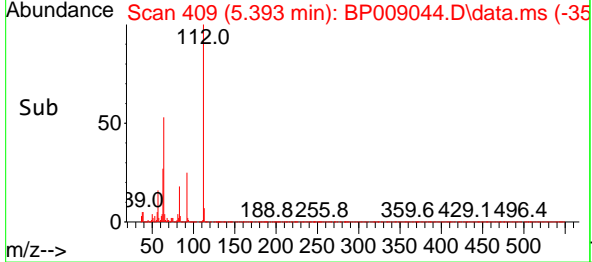
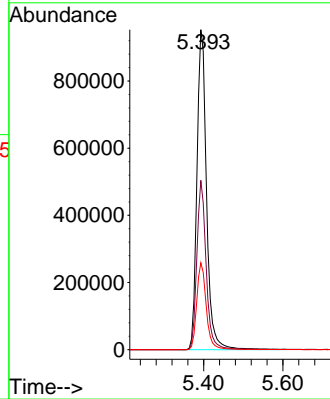
#5
 2-Fluorophenol
 Concen: 113.807 ng
 RT: 5.393 min Scan# 409
 Delta R.T. -0.000 min
 Lab File: BP009044.D
 Acq: 07 Feb 2022 13:26

Instrument : BNA_P
 ClientSampleId : SSTDICC060



Tgt Ion: 112 Resp: 1599786

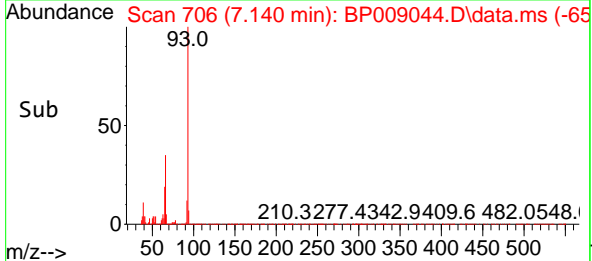
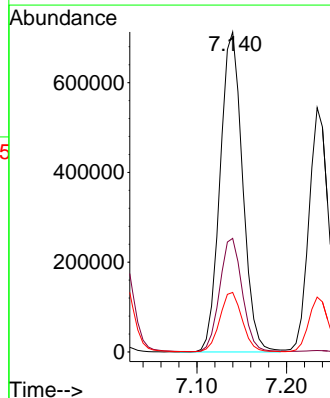
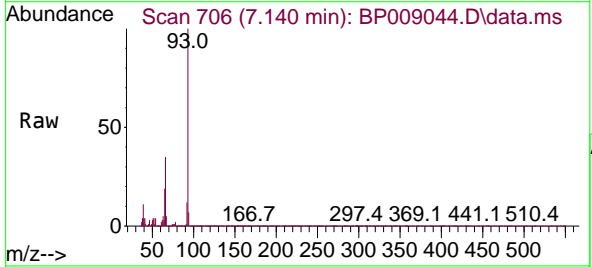
Ion	Ratio	Lower	Upper
112	100		
64	52.9	39.7	59.5
63	27.1	20.0	30.0

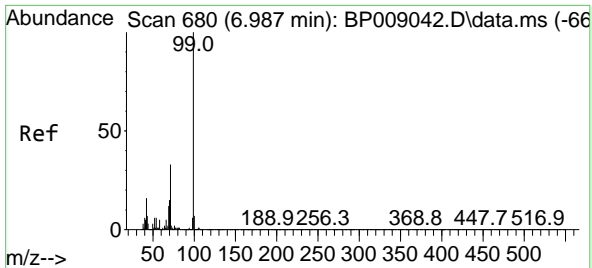


#6
 Aniline
 Concen: 59.164 ng
 RT: 7.140 min Scan# 706
 Delta R.T. 0.006 min
 Lab File: BP009044.D
 Acq: 07 Feb 2022 13:26

Tgt Ion: 93 Resp: 1239489

Ion	Ratio	Lower	Upper
93	100		
66	35.5	27.8	41.6
65	18.6	14.0	21.0



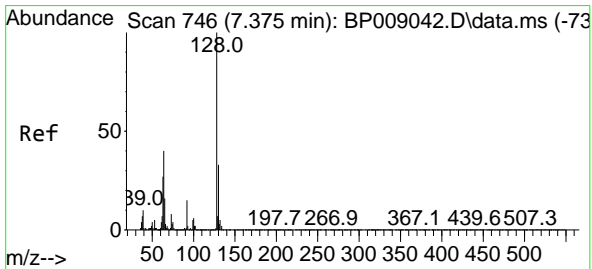
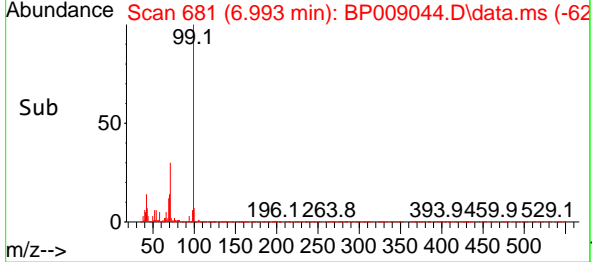
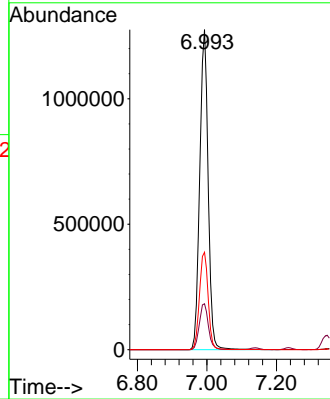
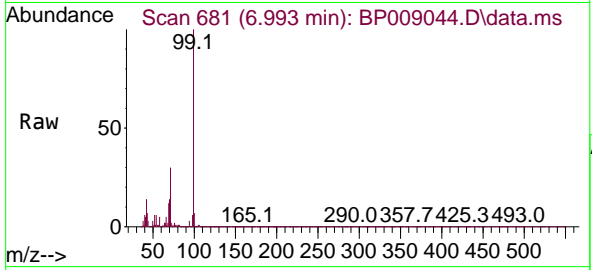


#7
 Phenol-d6
 Concen: 116.158 ng
 RT: 6.993 min Scan# 681
 Delta R.T. 0.006 min
 Lab File: BP009044.D
 Acq: 07 Feb 2022 13:26

Instrument : BNA_P
 ClientSampleId : SSTDICC060

Tgt Ion: 99 Resp: 2139689

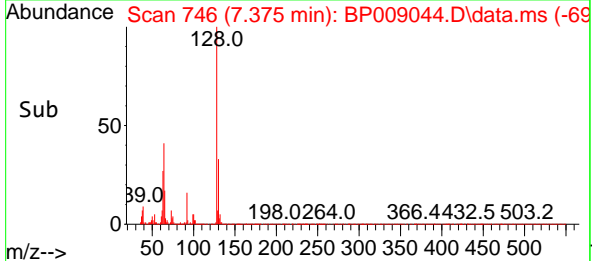
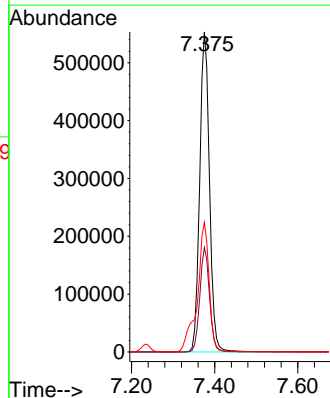
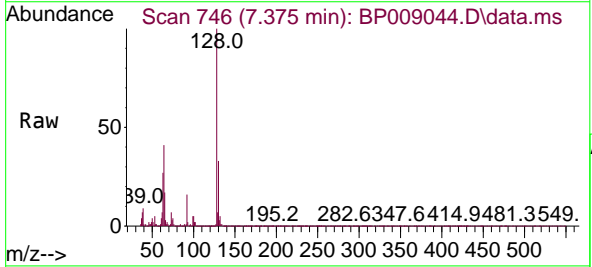
Ion	Ratio	Lower	Upper
99	100		
42	14.4	10.8	16.2
71	30.4	23.8	35.6

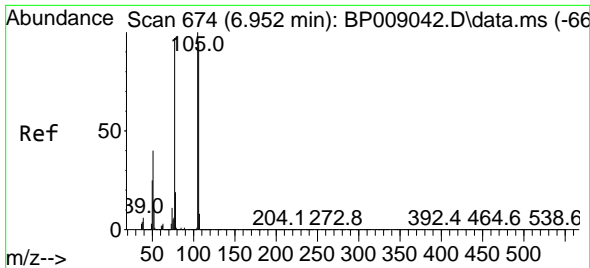


#8
 2-Chlorophenol
 Concen: 57.024 ng
 RT: 7.375 min Scan# 746
 Delta R.T. -0.000 min
 Lab File: BP009044.D
 Acq: 07 Feb 2022 13:26

Tgt Ion: 128 Resp: 902410

Ion	Ratio	Lower	Upper
128	100		
130	32.6	12.6	52.6
64	40.6	18.6	58.6



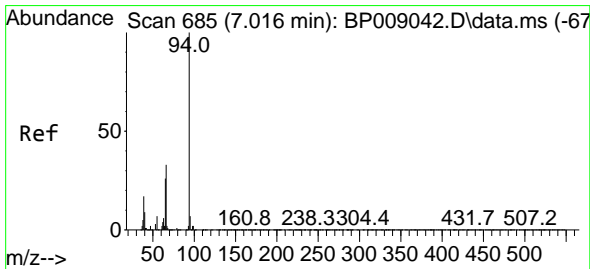
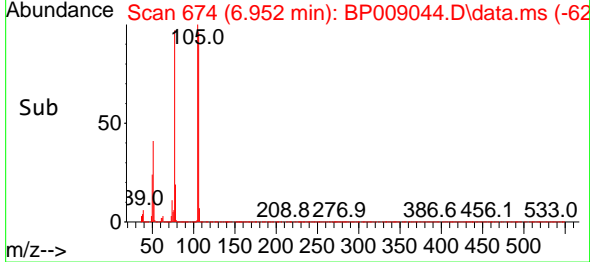
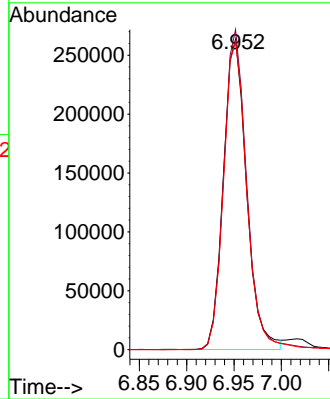
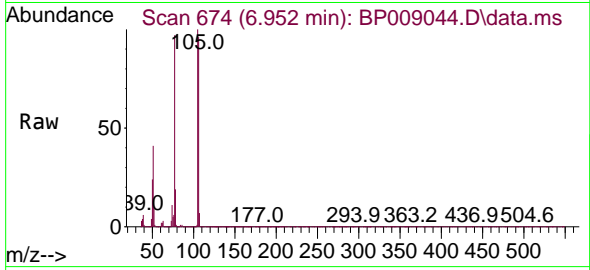


#9
Benzaldehyde
Concen: 50.891 ng
RT: 6.952 min Scan# 61
Delta R.T. 0.000 min
Lab File: BP009044.D
Acq: 07 Feb 2022 13:26

Instrument :
BNA_P
ClientSampleId :
SSTDICC060

Tgt Ion: 77 Resp: 449378

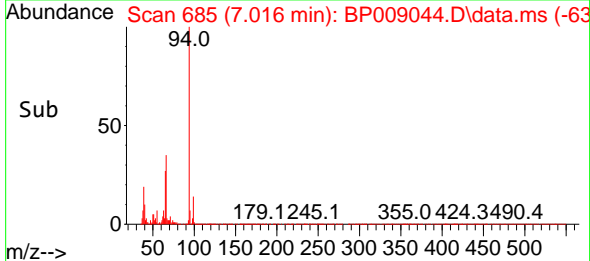
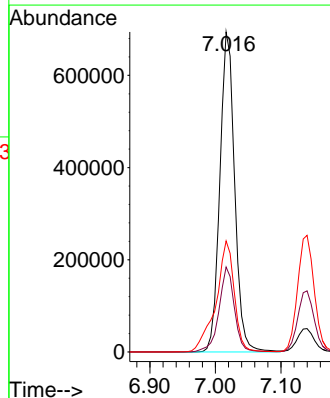
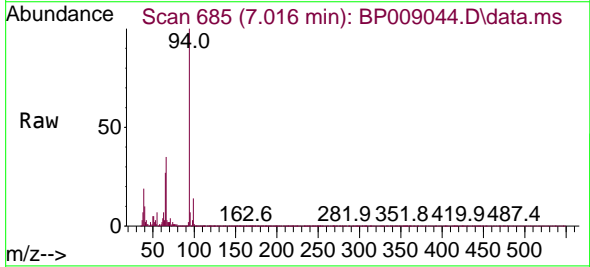
Ion	Ratio	Lower	Upper
77	100		
105	103.0	84.2	124.2
106	99.2	80.6	120.6

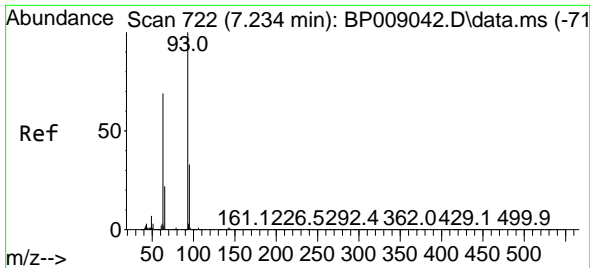


#10
Phenol
Concen: 58.555 ng
RT: 7.016 min Scan# 685
Delta R.T. 0.000 min
Lab File: BP009044.D
Acq: 07 Feb 2022 13:26

Tgt Ion: 94 Resp: 1081694

Ion	Ratio	Lower	Upper
94	100		
65	26.6	4.1	44.1
66	34.7	12.4	52.4



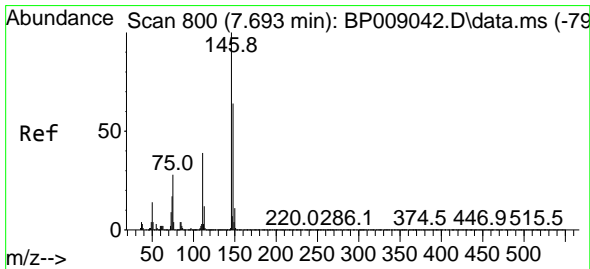
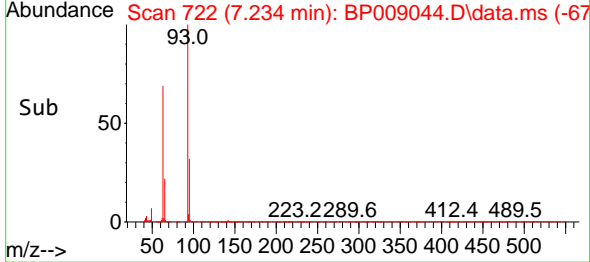
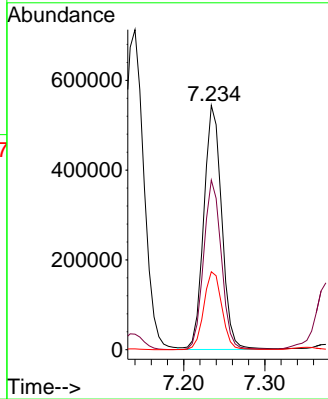
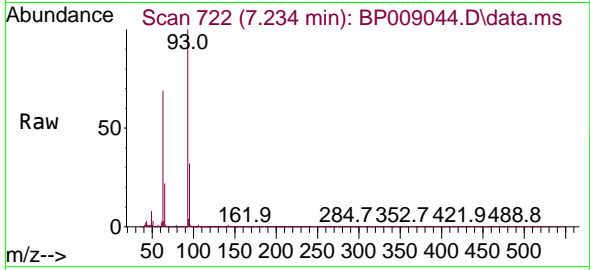


#11
 bis(2-Chloroethyl)ether
 Concen: 58.393 ng
 RT: 7.234 min Scan# 71
 Delta R.T. 0.000 min
 Lab File: BP009044.D
 Acq: 07 Feb 2022 13:26

Instrument :
 BNA_P
 ClientSampleId :
 SSTDICC060

Tgt Ion: 93 Resp: 834522

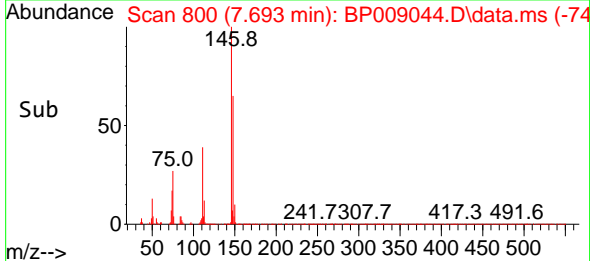
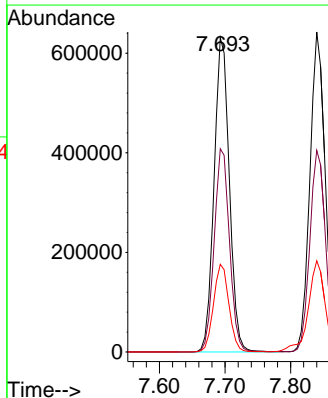
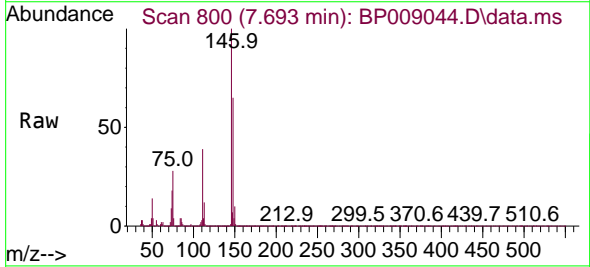
Ion	Ratio	Lower	Upper
93	100		
63	69.4	46.0	86.0
95	31.9	12.2	52.2

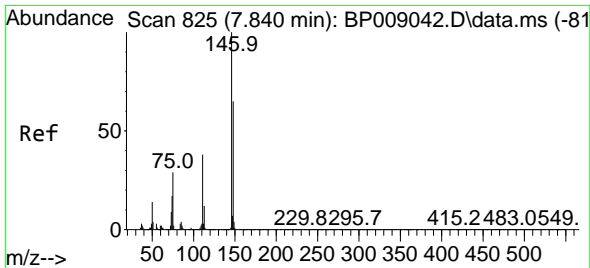


#12
 1,3-Dichlorobenzene
 Concen: 56.175 ng
 RT: 7.693 min Scan# 800
 Delta R.T. 0.000 min
 Lab File: BP009044.D
 Acq: 07 Feb 2022 13:26

Tgt Ion: 146 Resp: 1018179

Ion	Ratio	Lower	Upper
146	100		
148	64.7	51.9	77.9
75	27.9	20.5	30.7



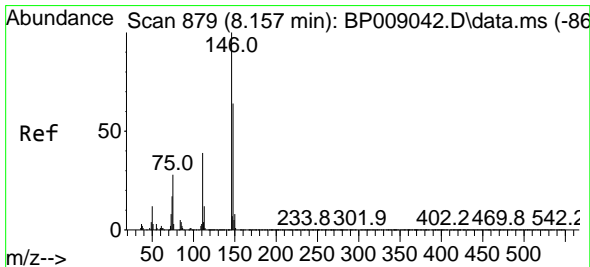
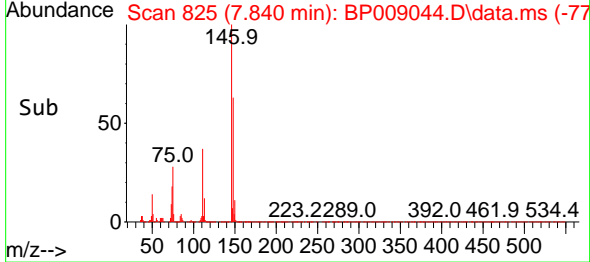
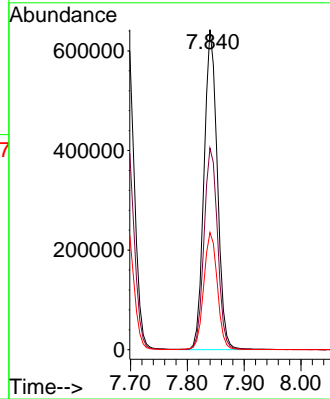
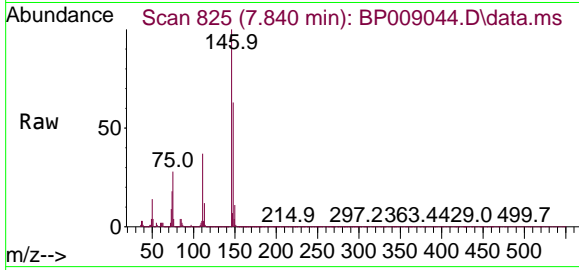


#13
 1,4-Dichlorobenzene
 Concen: 56.127 ng
 RT: 7.840 min Scan# 81
 Delta R.T. 0.000 min
 Lab File: BP009044.D
 Acq: 07 Feb 2022 13:26

Instrument :
 BNA_P
 ClientSampleId :
 SSTDICC060

Tgt Ion:146 Resp: 1042007

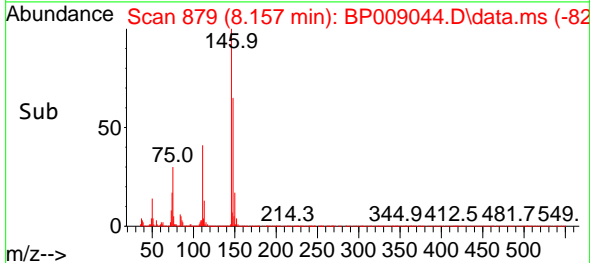
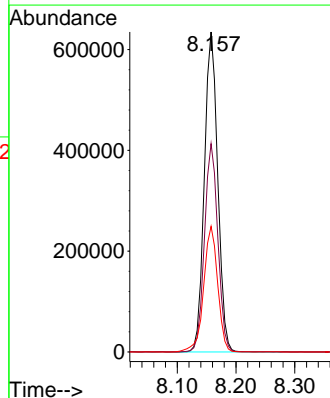
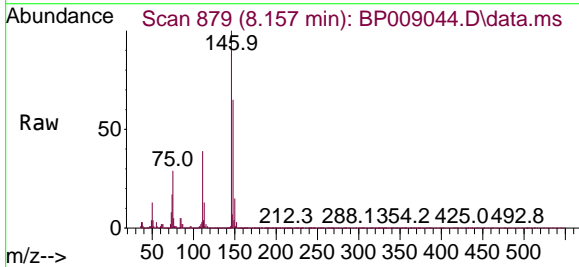
Ion	Ratio	Lower	Upper
146	100		
148	63.0	52.3	78.5
111	36.6	29.8	44.8

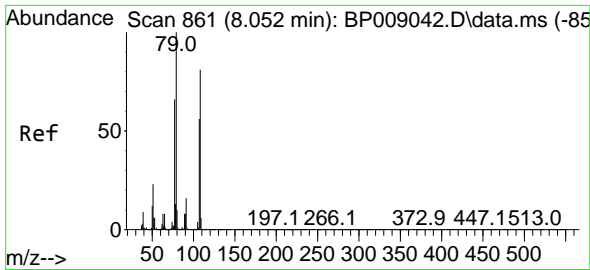


#14
 1,2-Dichlorobenzene
 Concen: 55.816 ng
 RT: 8.157 min Scan# 879
 Delta R.T. 0.000 min
 Lab File: BP009044.D
 Acq: 07 Feb 2022 13:26

Tgt Ion:146 Resp: 1000402

Ion	Ratio	Lower	Upper
146	100		
148	65.1	52.2	78.2
111	39.3	31.1	46.7

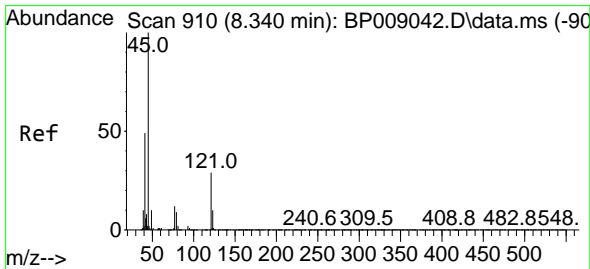
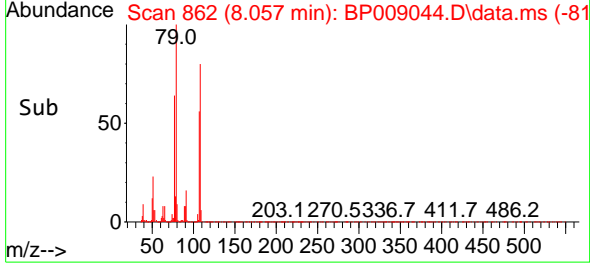
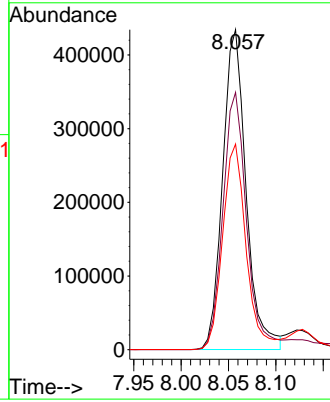
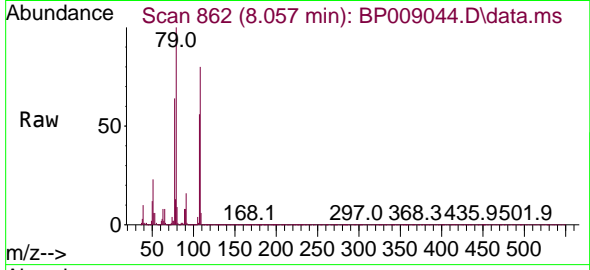




#15
 Benzyl Alcohol
 Concen: 63.215 ng
 RT: 8.057 min Scan# 80
 Delta R.T. 0.006 min
 Lab File: BP009044.D
 Acq: 07 Feb 2022 13:26

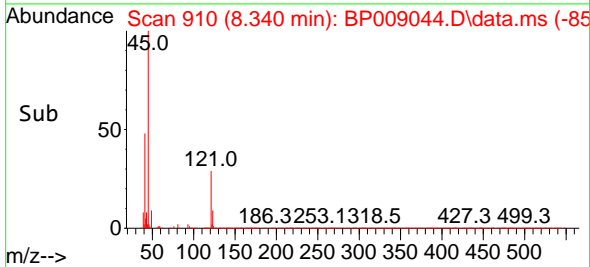
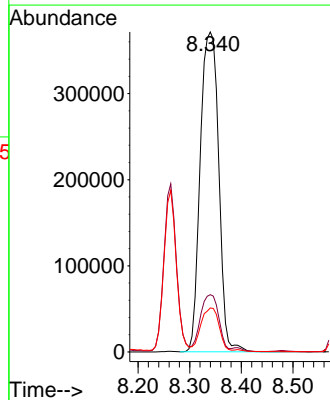
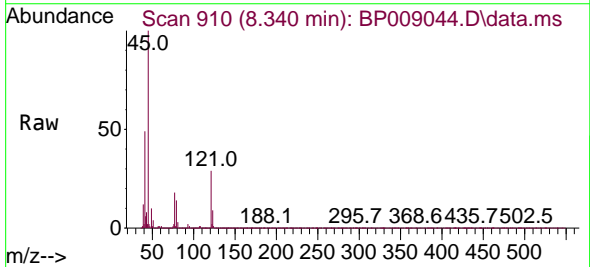
Instrument :
 BNA_P
 ClientSampleId :
 SSTDICC060

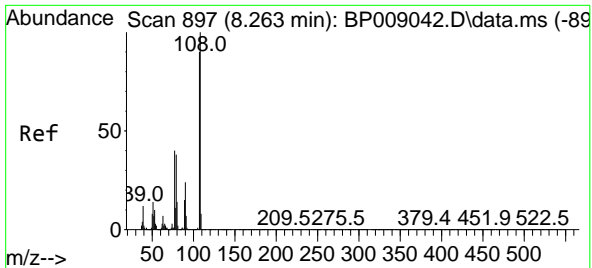
Tgt Ion: 79 Resp: 748031
 Ion Ratio Lower Upper
 79 100
 108 80.4 67.8 101.8
 77 64.2 50.7 76.1



#16
 2,2'-oxybis(1-Chloropropane)
 Concen: 58.101 ng
 RT: 8.340 min Scan# 910
 Delta R.T. 0.000 min
 Lab File: BP009044.D
 Acq: 07 Feb 2022 13:26

Tgt Ion: 45 Resp: 921410
 Ion Ratio Lower Upper
 45 100
 77 17.9 0.0 37.4
 79 13.7 0.0 34.1

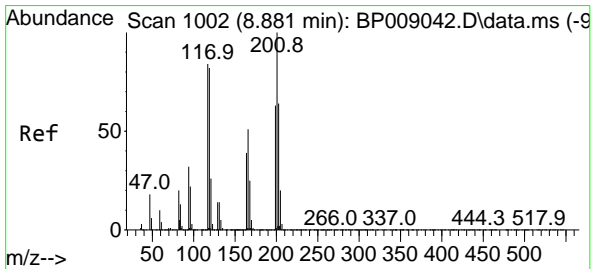
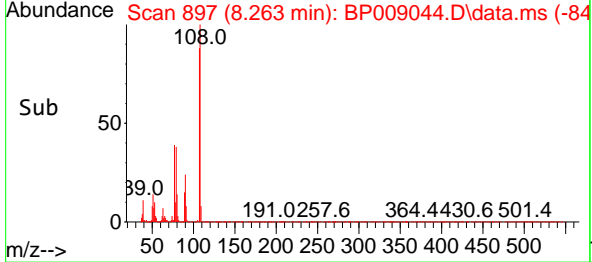
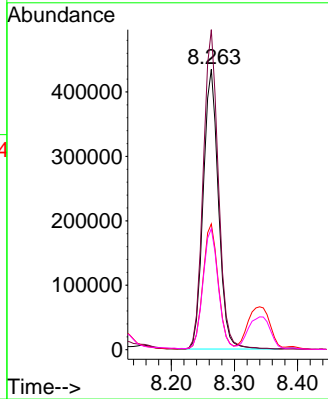
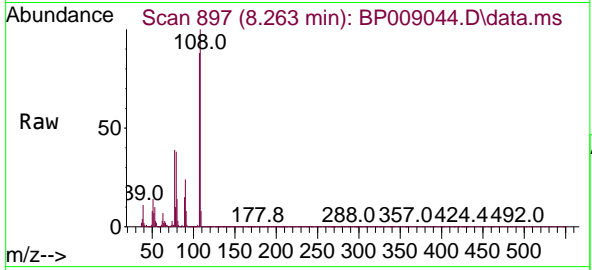




#17
 2-Methylphenol
 Concen: 58.544 ng
 RT: 8.263 min Scan# 897
 Delta R.T. 0.000 min
 Lab File: BP009044.D
 Acq: 07 Feb 2022 13:26

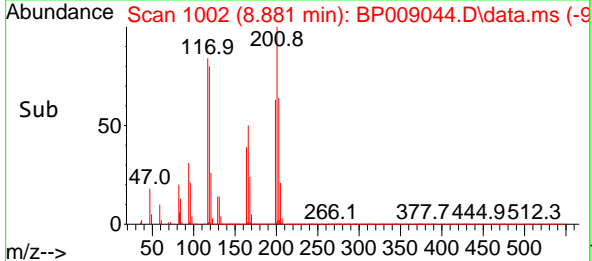
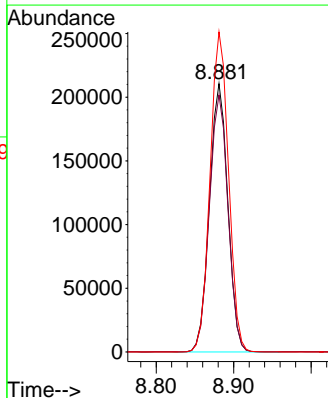
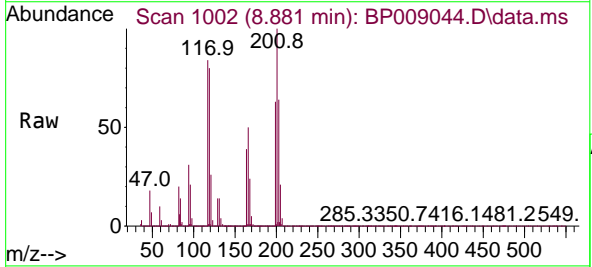
Instrument : BNA_P
 ClientSampleId : SSTDICC060

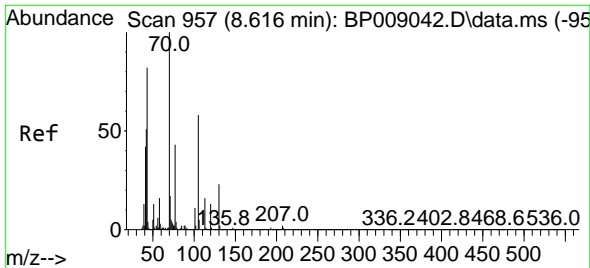
Tgt Ion	Resp	Lower	Upper
107	100		
108	114.1	90.0	135.0
77	44.9	32.7	49.1
79	43.2	32.1	48.1



#18
 Hexachloroethane
 Concen: 57.047 ng
 RT: 8.881 min Scan# 1002
 Delta R.T. 0.000 min
 Lab File: BP009044.D
 Acq: 07 Feb 2022 13:26

Tgt Ion	Resp	Lower	Upper
117	100		
119	95.7	76.9	115.3
201	119.2	93.7	140.5

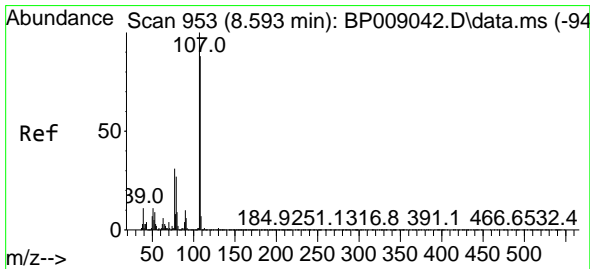
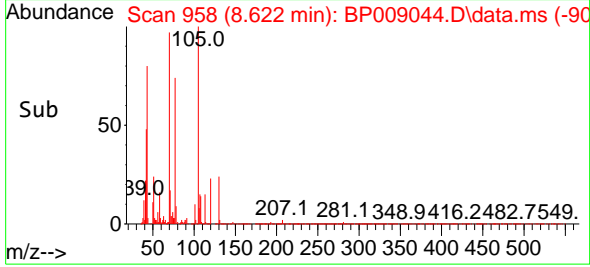
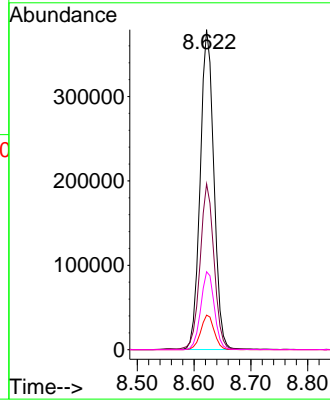
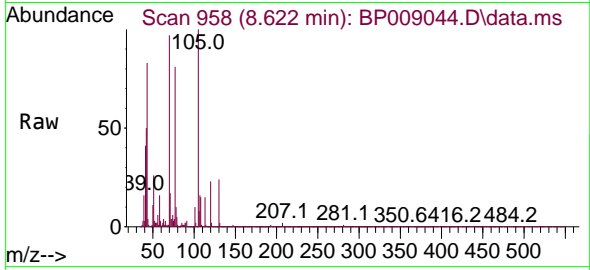




#19
 n-Nitroso-di-n-propylamine
 Concen: 59.569 ng
 RT: 8.622 min Scan# 91
 Delta R.T. 0.006 min
 Lab File: BP009044.D
 Acq: 07 Feb 2022 13:26

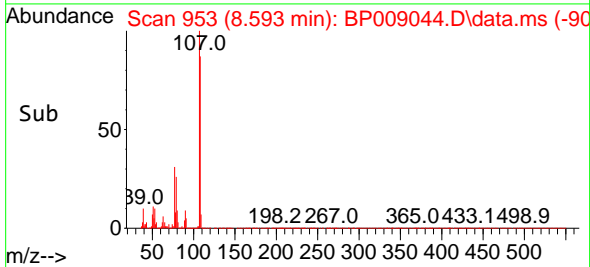
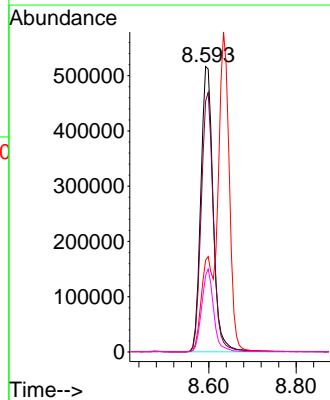
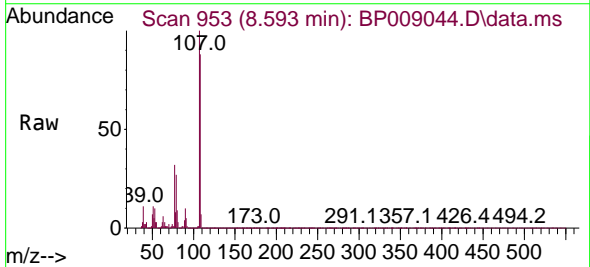
Instrument :
 BNA_P
 ClientSampleId :
 SSTDICC060

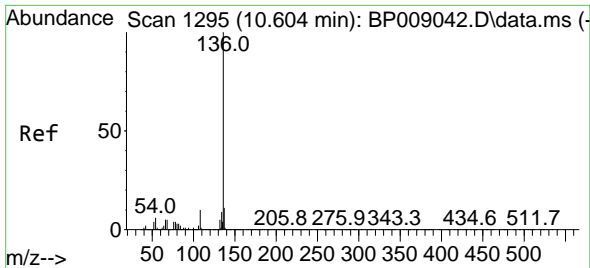
Tgt Ion: 70 Resp: 633484
 Ion Ratio Lower Upper
 70 100
 42 51.8 38.2 57.2
 101 10.8 8.7 13.1
 130 24.3 21.0 31.6



#20
 3+4-Methylphenols
 Concen: 59.717 ng
 RT: 8.593 min Scan# 953
 Delta R.T. -0.000 min
 Lab File: BP009044.D
 Acq: 07 Feb 2022 13:26

Tgt Ion: 107 Resp: 1017586
 Ion Ratio Lower Upper
 107 100
 108 87.9 69.8 109.8
 77 32.2 10.4 50.4
 79 26.8 6.4 46.4



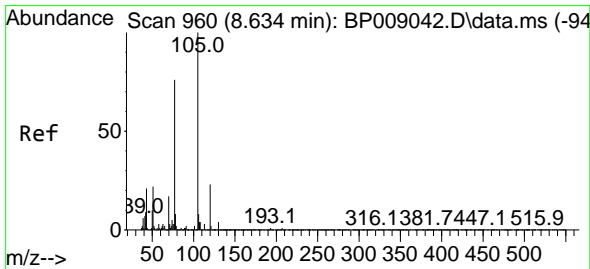
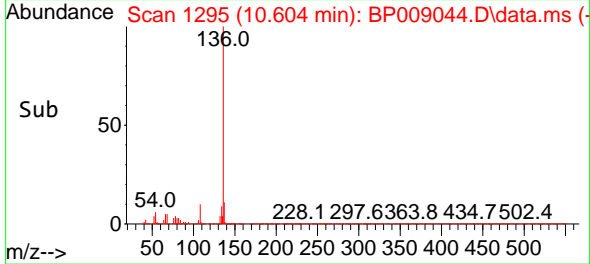
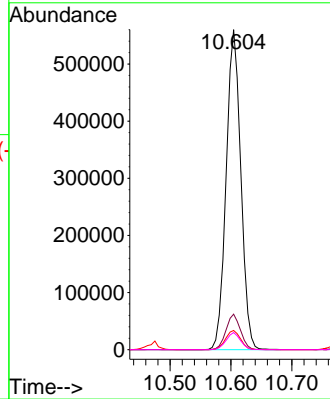
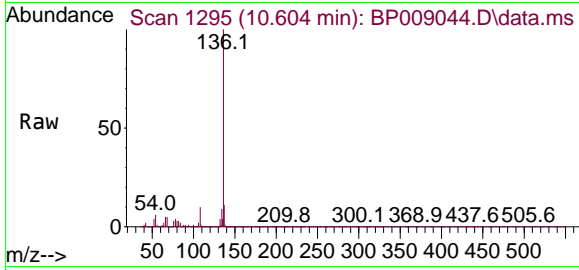


#21
 Naphthalene-d8
 Concen: 20.000 ng
 RT: 10.604 min Scan# 111
 Delta R.T. 0.000 min
 Lab File: BP009044.D
 Acq: 07 Feb 2022 13:26

Instrument :
 BNA_P
 Client Sample Id :
 SSTDICC060

Tgt Ion:136 Resp: 937173

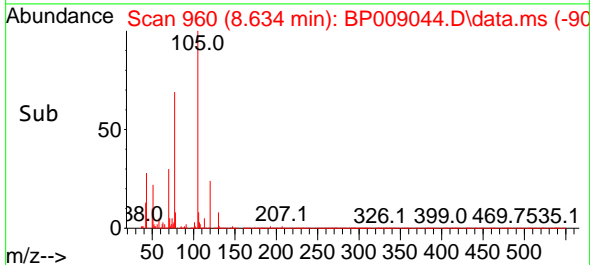
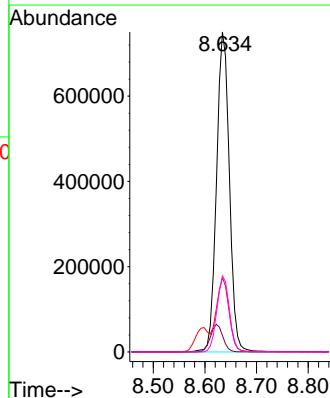
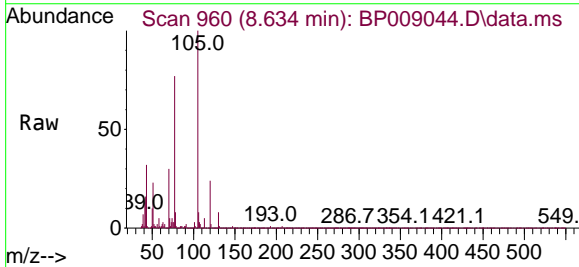
Ion	Ratio	Lower	Upper
136	100		
137	11.1	9.0	13.4
54	6.0	4.9	7.3
68	5.3	4.3	6.5

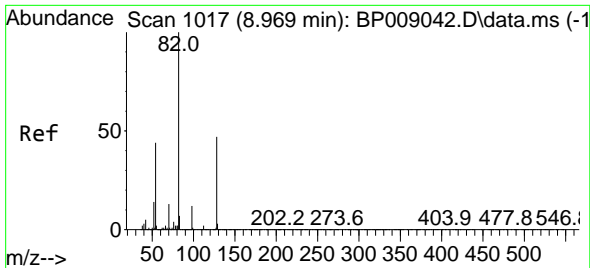


#22
 Acetophenone
 Concen: 58.029 ng
 RT: 8.634 min Scan# 960
 Delta R.T. 0.000 min
 Lab File: BP009044.D
 Acq: 07 Feb 2022 13:26

Tgt Ion:105 Resp: 1294329

Ion	Ratio	Lower	Upper
105	100		
71	5.2	5.3	7.9#
51	23.2	16.3	24.5
120	23.7	19.2	28.8



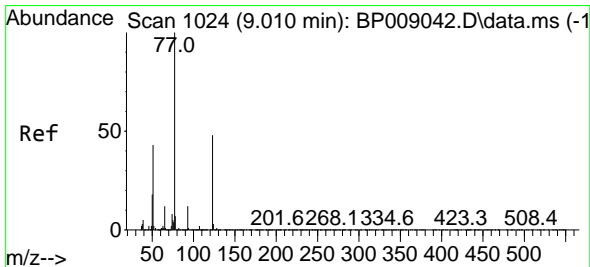
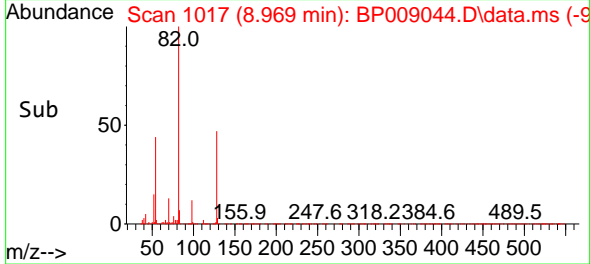
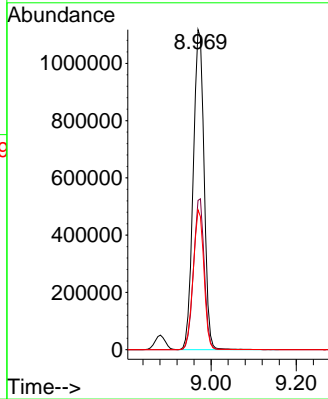
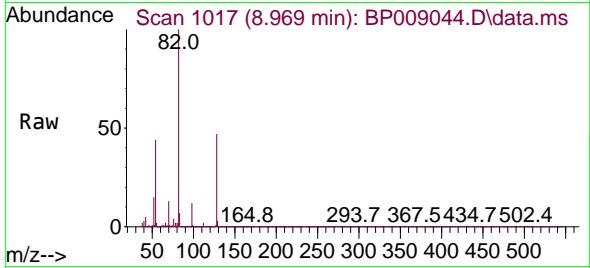


#23
 Nitrobenzene-d5
 Concen: 118.312 ng
 RT: 8.969 min Scan# 1017
 Delta R.T. -0.000 min
 Lab File: BP009044.D
 Acq: 07 Feb 2022 13:26

Instrument :
 BNA_P
 ClientSampleId :
 SSTDICC060

Tgt Ion: 82 Resp: 1978705

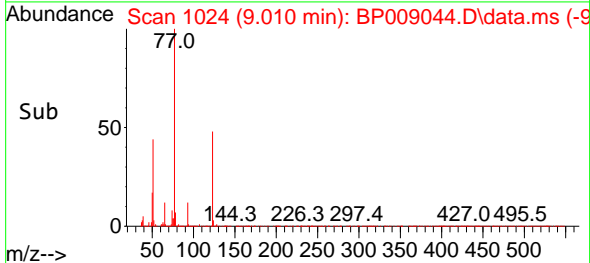
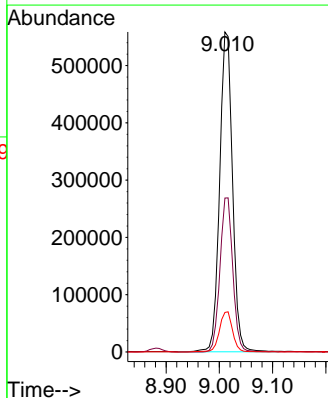
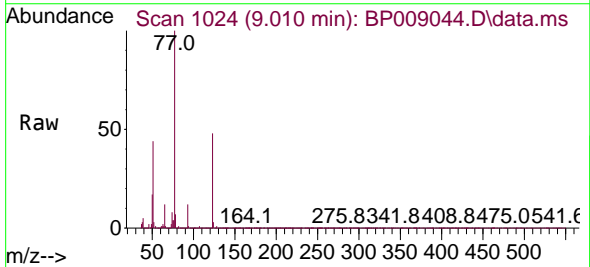
Ion	Ratio	Lower	Upper
82	100		
128	46.6	39.4	59.2
54	43.7	32.6	48.8

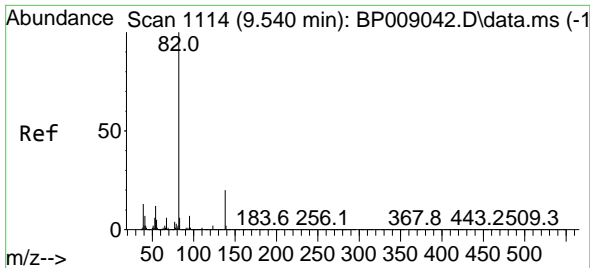


#24
 Nitrobenzene
 Concen: 59.055 ng
 RT: 9.010 min Scan# 1024
 Delta R.T. 0.000 min
 Lab File: BP009044.D
 Acq: 07 Feb 2022 13:26

Tgt Ion: 77 Resp: 932744

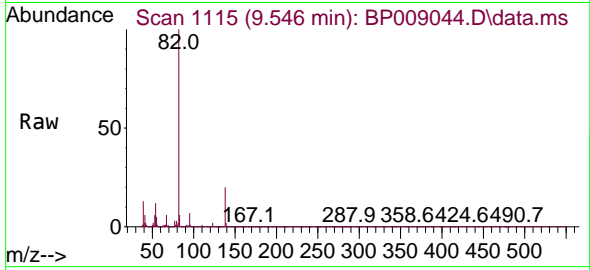
Ion	Ratio	Lower	Upper
77	100		
123	48.1	41.4	62.2
65	12.4	9.8	14.8



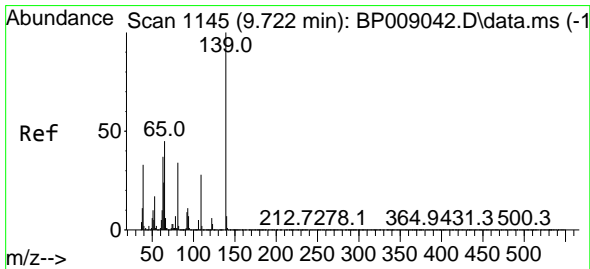
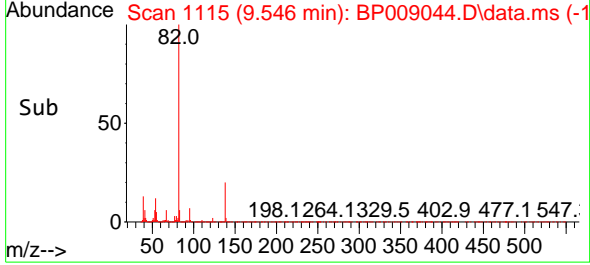
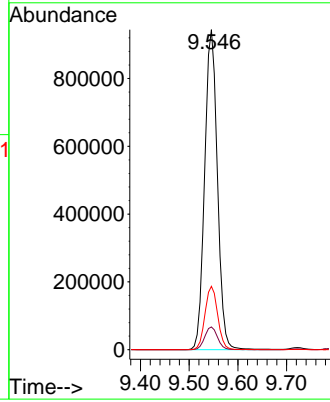


#25
 Isophorone
 Concen: 60.977 ng
 RT: 9.546 min Scan# 1114
 Delta R.T. 0.006 min
 Lab File: BP009044.D
 Acq: 07 Feb 2022 13:26

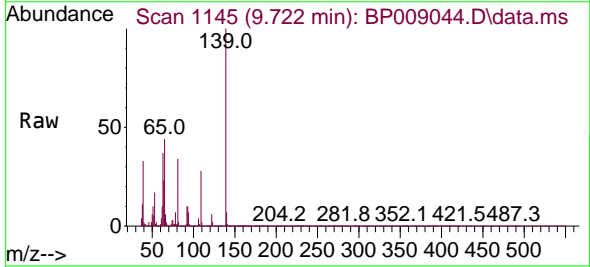
Instrument :
 BNA_P
 ClientSampleId :
 SSTDICC060



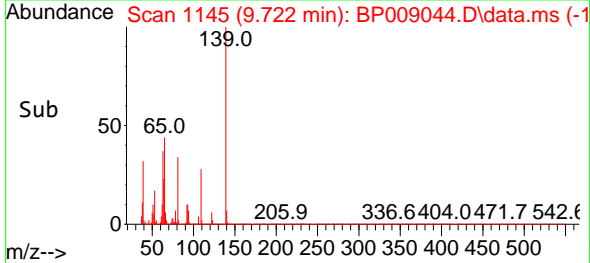
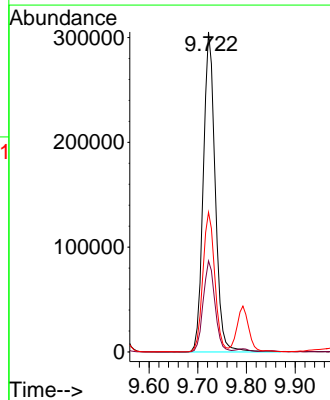
Tgt Ion: 82 Resp: 1706834
 Ion Ratio Lower Upper
 82 100
 95 7.1 5.4 8.2
 138 19.8 16.6 24.8

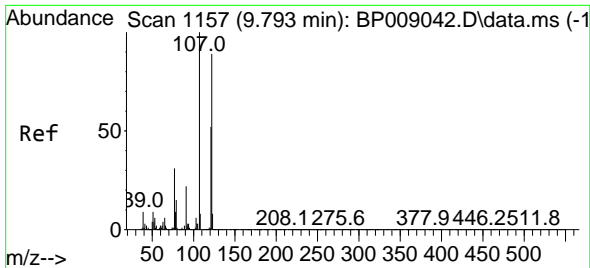


#26
 2-Nitrophenol
 Concen: 62.059 ng
 RT: 9.722 min Scan# 1145
 Delta R.T. -0.000 min
 Lab File: BP009044.D
 Acq: 07 Feb 2022 13:26



Tgt Ion: 139 Resp: 518569
 Ion Ratio Lower Upper
 139 100
 109 28.5 20.7 31.1
 65 43.6 31.6 47.4

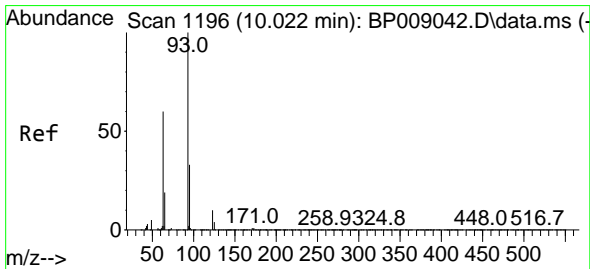
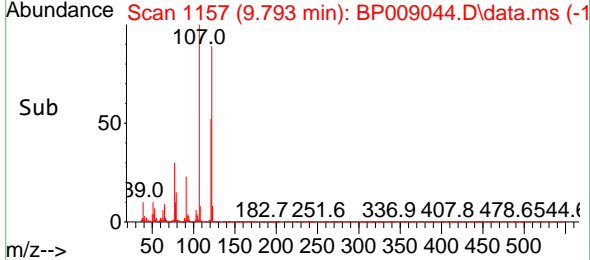
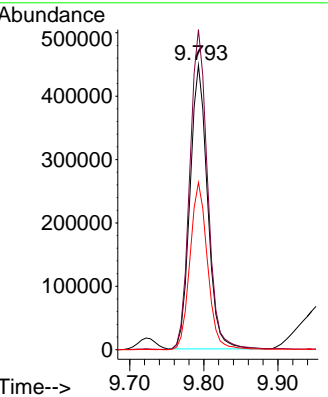
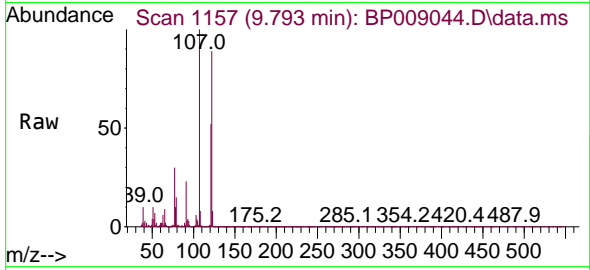




#27
 2,4-Dimethylphenol
 Concen: 59.532 ng
 RT: 9.793 min Scan# 1157
 Delta R.T. 0.000 min
 Lab File: BP009044.D
 Acq: 07 Feb 2022 13:26

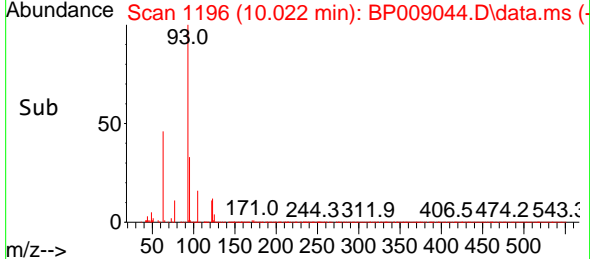
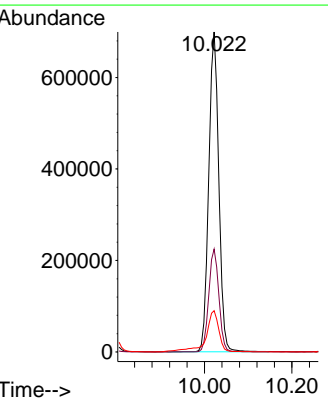
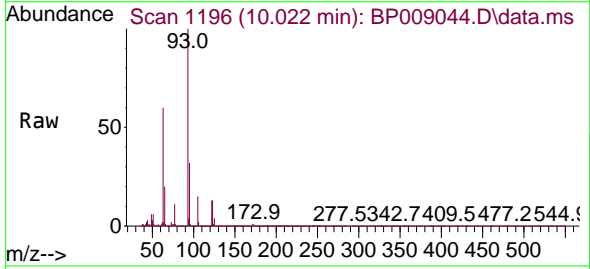
Instrument : BNA_P
 ClientSampleId : SSTDICC060

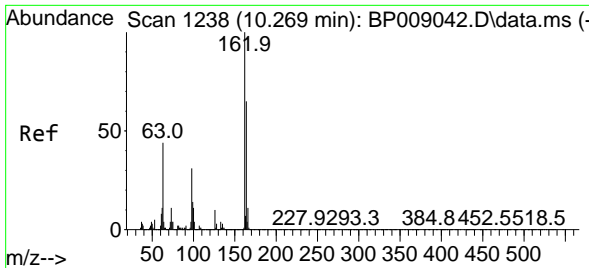
Tgt Ion	Resp	Lower	Upper
122	734266		
122	100		
107	112.5	89.6	134.4
121	58.8	47.8	71.8



#28
 bis(2-Chloroethoxy)methane
 Concen: 59.500 ng
 RT: 10.022 min Scan# 1196
 Delta R.T. 0.000 min
 Lab File: BP009044.D
 Acq: 07 Feb 2022 13:26

Tgt Ion	Resp	Lower	Upper
93	1110177		
93	100		
95	32.2	25.8	38.8
123	12.9	9.7	14.5



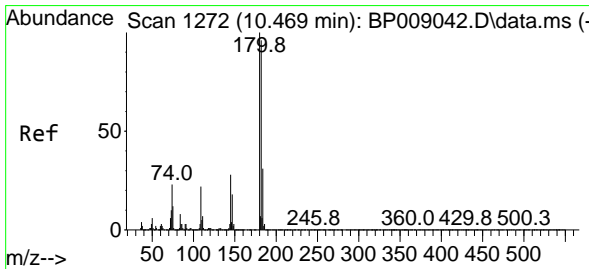
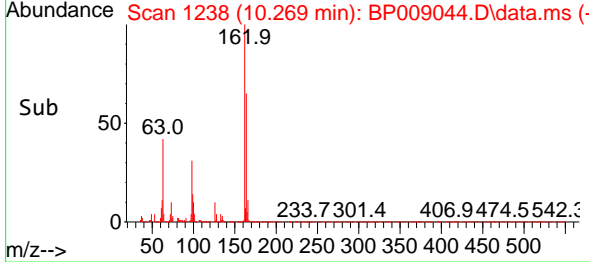
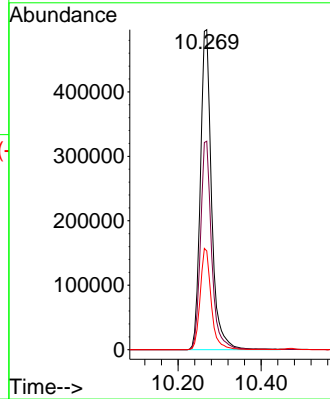
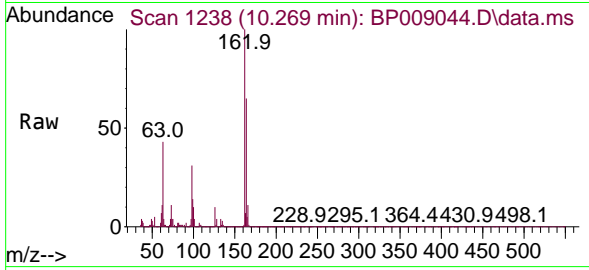


#29
 2,4-Dichlorophenol
 Concen: 60.478 ng
 RT: 10.269 min Scan# 11
 Delta R.T. 0.000 min
 Lab File: BP009044.D
 Acq: 07 Feb 2022 13:26

Instrument :
 BNA_P
 ClientSampleId :
 SSTDICC060

Tgt Ion:162 Resp: 930611

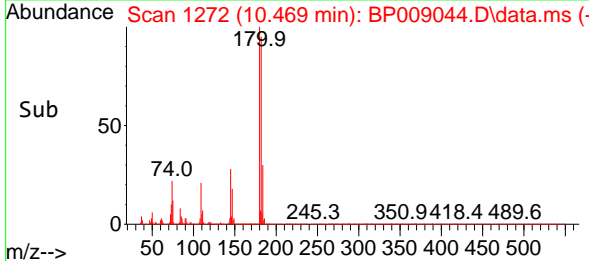
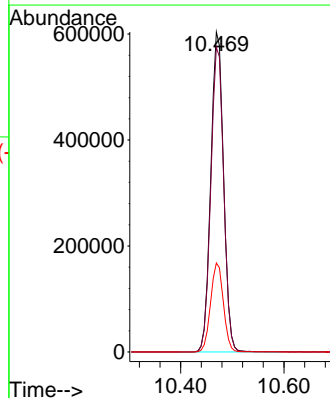
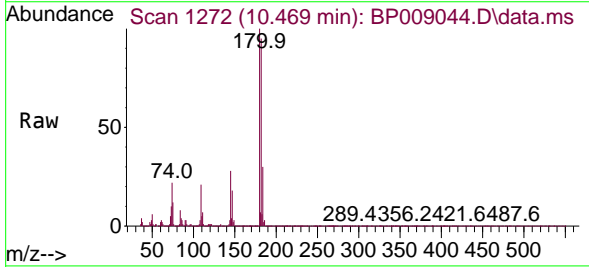
Ion	Ratio	Lower	Upper
162	100		
164	65.1	44.9	84.9
98	30.8	11.2	51.2

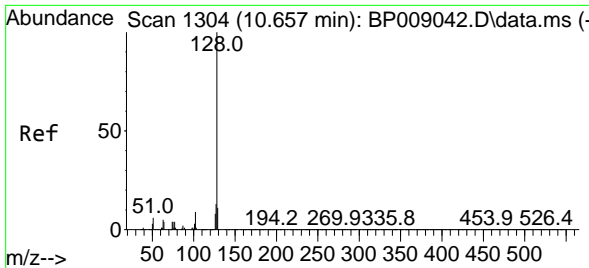


#30
 1,2,4-Trichlorobenzene
 Concen: 58.072 ng
 RT: 10.469 min Scan# 1272
 Delta R.T. 0.000 min
 Lab File: BP009044.D
 Acq: 07 Feb 2022 13:26

Tgt Ion:180 Resp: 1035713

Ion	Ratio	Lower	Upper
180	100		
182	95.2	76.7	115.1
145	27.8	22.4	33.6

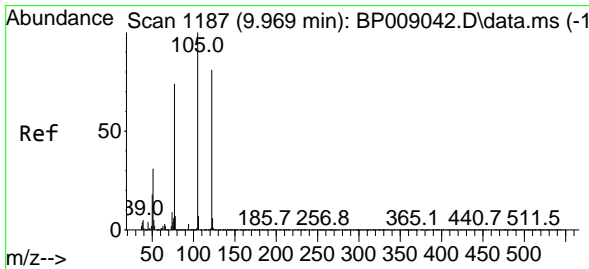
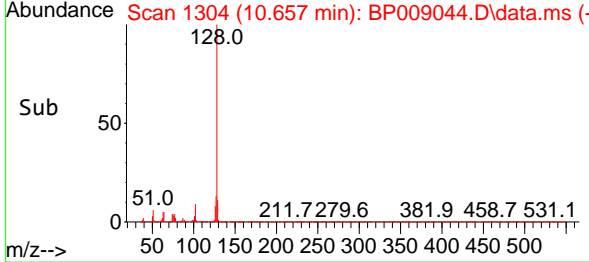
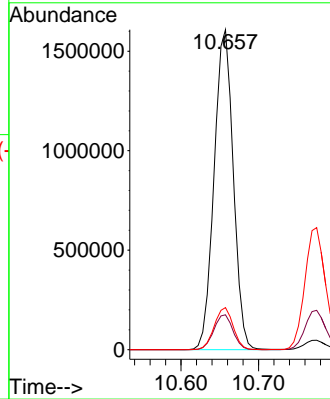
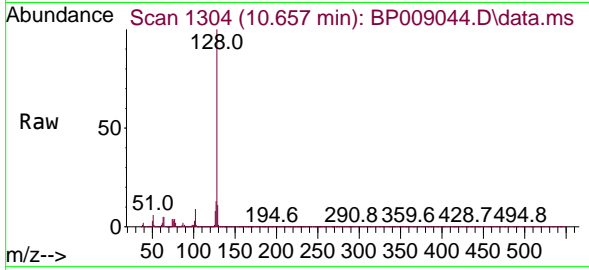




#31
 Naphthalene
 Concen: 57.477 ng
 RT: 10.657 min Scan# 1194
 Delta R.T. 0.000 min
 Lab File: BP009044.D
 Acq: 07 Feb 2022 13:26

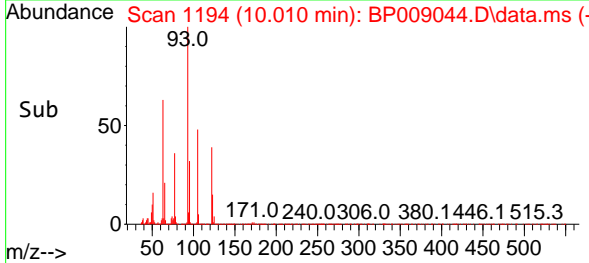
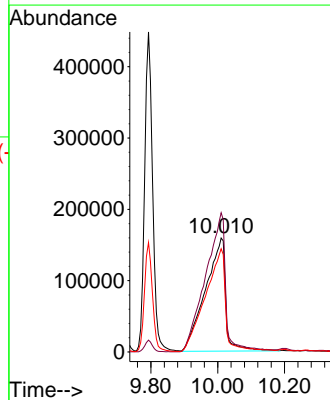
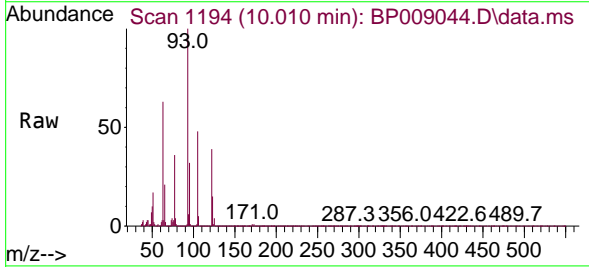
Instrument :
 BNA_P
 ClientSampleId :
 SSTDICC060

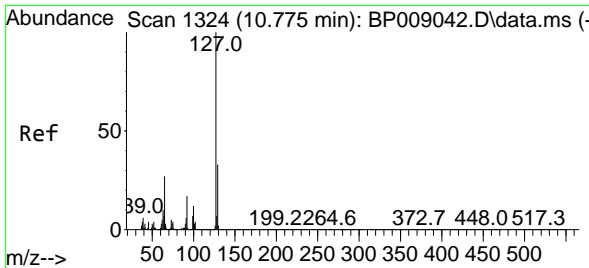
Tgt Ion:128 Resp: 2760247
 Ion Ratio Lower Upper
 128 100
 129 10.9 8.8 13.2
 127 13.1 10.4 15.6



#32
 Benzoic acid
 Concen: 68.382 ng
 RT: 10.010 min Scan# 1194
 Delta R.T. 0.041 min
 Lab File: BP009044.D
 Acq: 07 Feb 2022 13:26

Tgt Ion:122 Resp: 669629
 Ion Ratio Lower Upper
 122 100
 105 122.1 100.1 140.1
 77 90.5 65.5 105.5



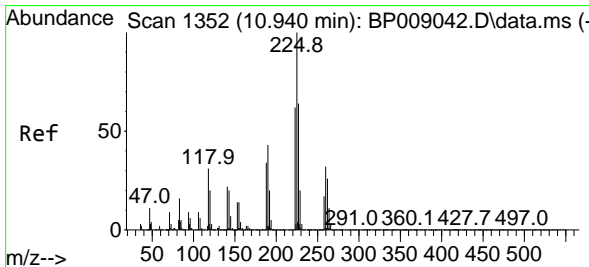
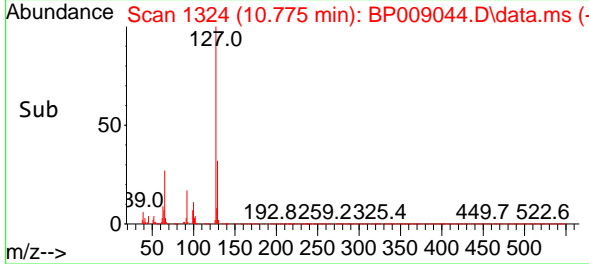
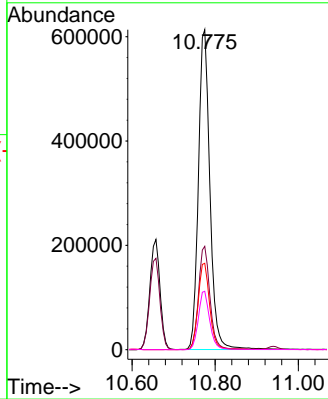
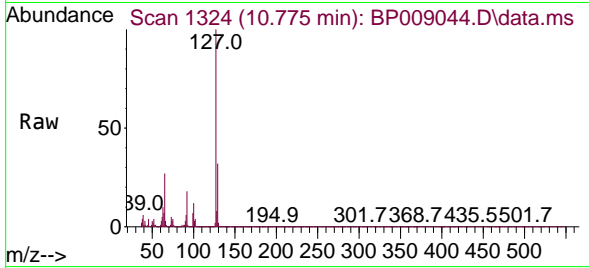


#33
 4-Chloroaniline
 Concen: 60.011 ng
 RT: 10.775 min Scan# 11
 Delta R.T. 0.000 min
 Lab File: BP009044.D
 Acq: 07 Feb 2022 13:26

Instrument :
 BNA_P
 ClientSampleId :
 SSTDICC060

Tgt Ion:127 Resp: 1179415

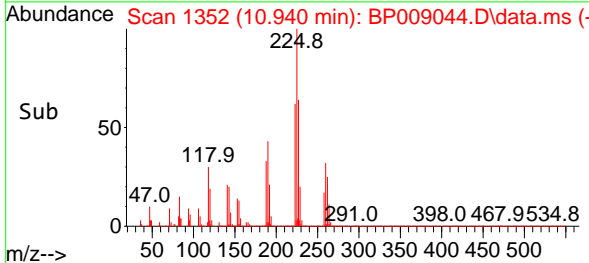
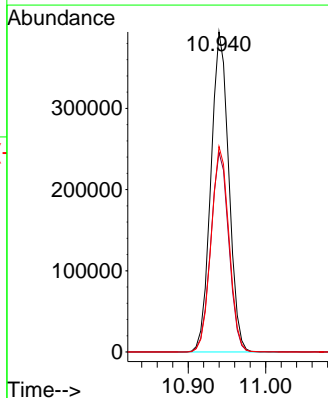
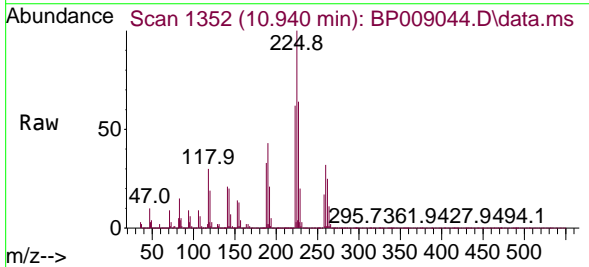
Ion	Ratio	Lower	Upper
127	100		
129	32.3	26.0	39.0
65	27.0	20.5	30.7
92	18.2	14.1	21.1

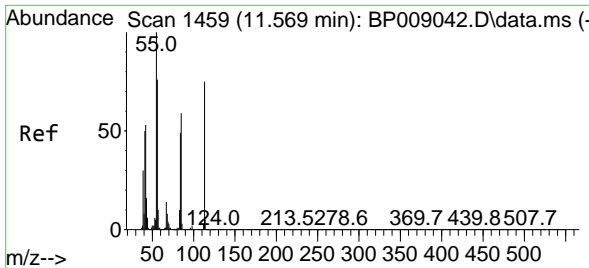


#34
 Hexachlorobutadiene
 Concen: 57.622 ng
 RT: 10.940 min Scan# 1352
 Delta R.T. -0.000 min
 Lab File: BP009044.D
 Acq: 07 Feb 2022 13:26

Tgt Ion:225 Resp: 631568

Ion	Ratio	Lower	Upper
225	100		
223	62.4	50.1	75.1
227	64.2	51.5	77.3

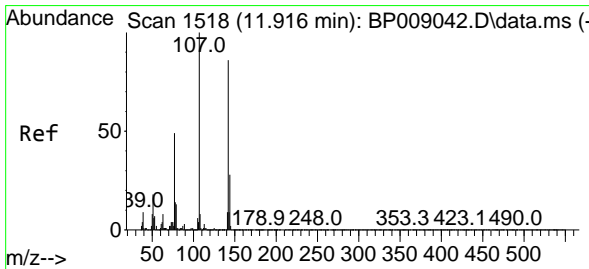
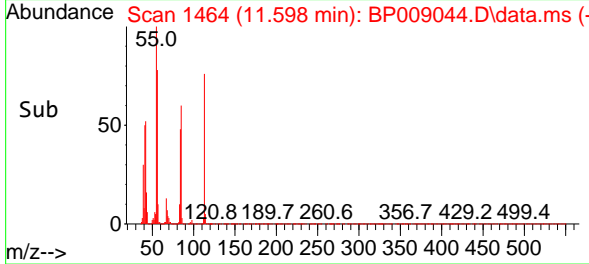
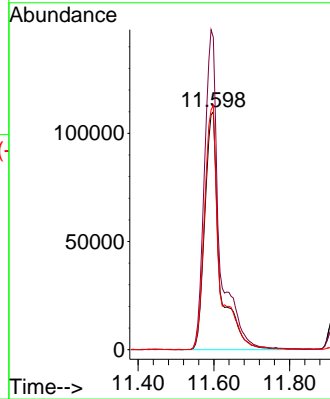
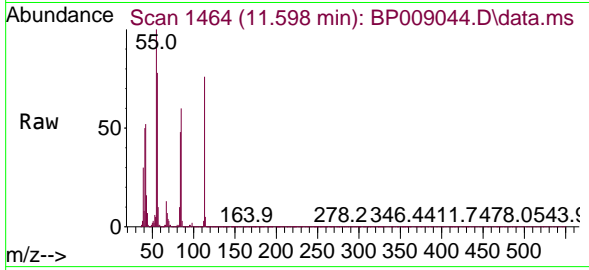




#35
 Caprolactam
 Concen: 65.567 ng
 RT: 11.598 min Scan# 1459
 Delta R.T. 0.029 min
 Lab File: BP009044.D
 Acq: 07 Feb 2022 13:26

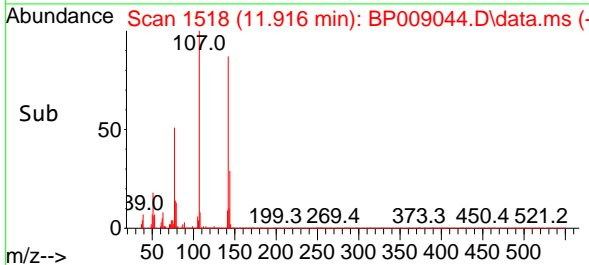
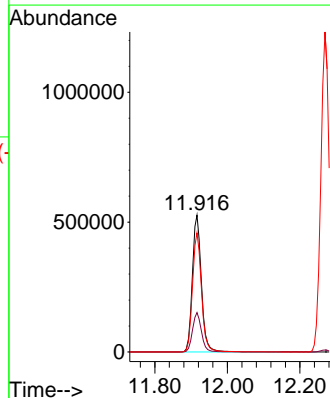
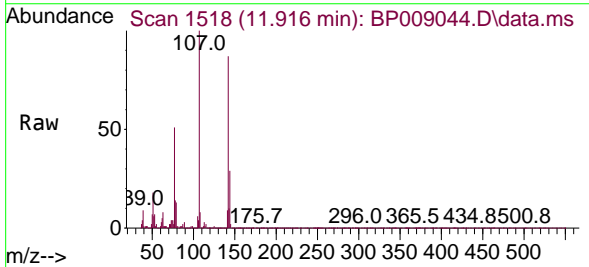
Instrument :
 BNA_P
 ClientSampleId :
 SSTDICC060

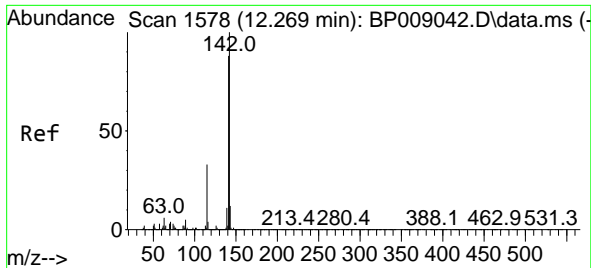
Tgt Ion:113 Resp: 302693
 Ion Ratio Lower Upper
 113 100
 55 131.3 107.1 147.1
 56 102.8 74.1 114.1



#36
 4-Chloro-3-methylphenol
 Concen: 62.040 ng
 RT: 11.916 min Scan# 1518
 Delta R.T. 0.000 min
 Lab File: BP009044.D
 Acq: 07 Feb 2022 13:26

Tgt Ion:107 Resp: 910405
 Ion Ratio Lower Upper
 107 100
 144 28.8 23.2 34.8
 142 87.1 70.1 105.1

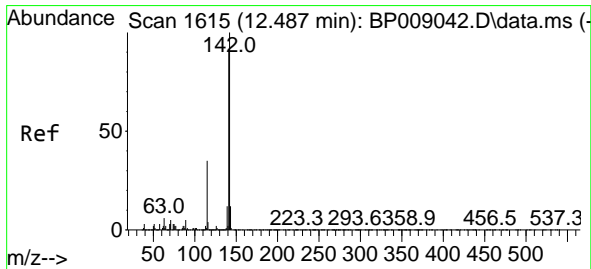
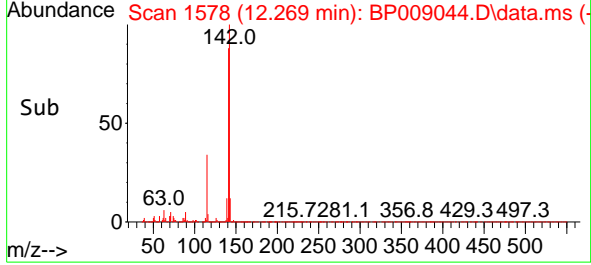
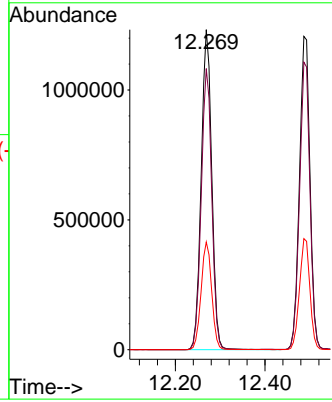
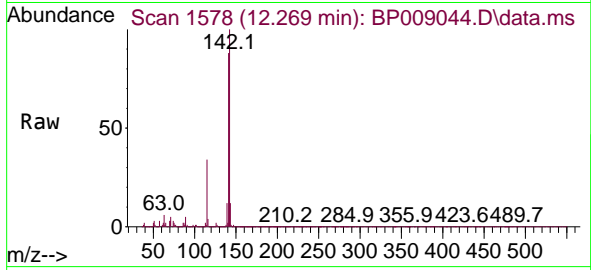




#37
 2-Methylnaphthalene
 Concen: 58.982 ng
 RT: 12.269 min Scan# 11
 Delta R.T. 0.000 min
 Lab File: BP009044.D
 Acq: 07 Feb 2022 13:26

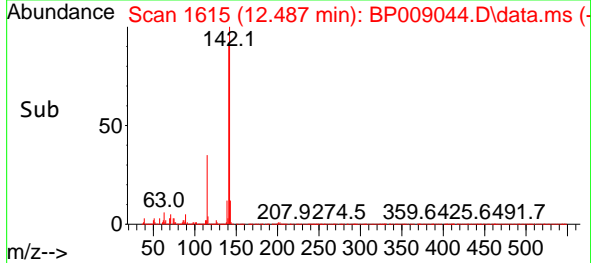
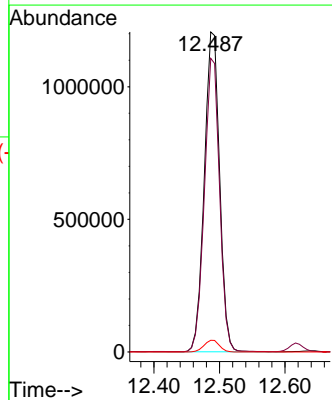
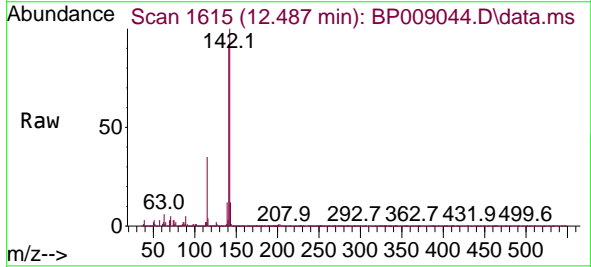
Instrument :
 BNA_P
 ClientSampleId :
 SSTDICC060

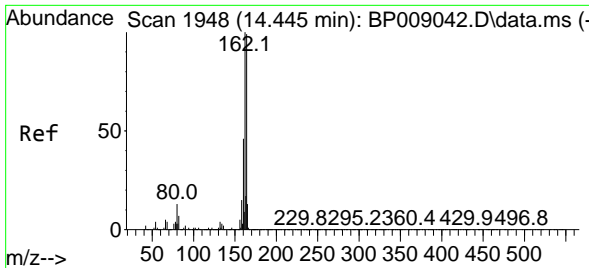
Tgt Ion:142 Resp: 2005939
 Ion Ratio Lower Upper
 142 100
 141 87.8 70.5 105.7
 115 33.7 24.6 36.8



#38
 1-Methylnaphthalene
 Concen: 58.919 ng
 RT: 12.487 min Scan# 1615
 Delta R.T. 0.000 min
 Lab File: BP009044.D
 Acq: 07 Feb 2022 13:26

Tgt Ion:142 Resp: 1962818
 Ion Ratio Lower Upper
 142 100
 141 91.8 73.2 109.8
 116 3.7 2.7 4.1



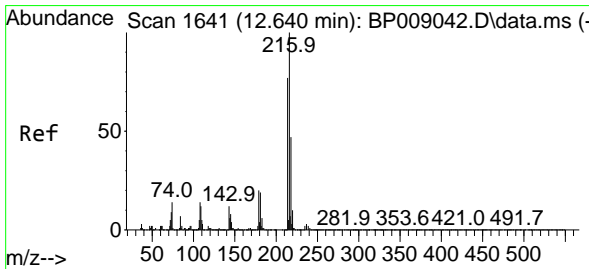
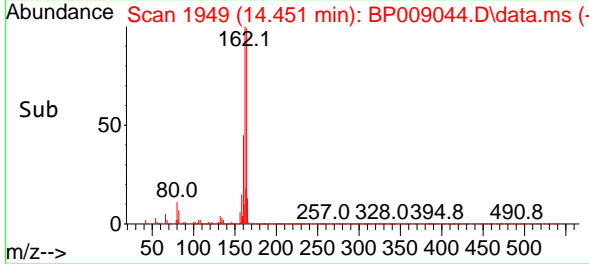
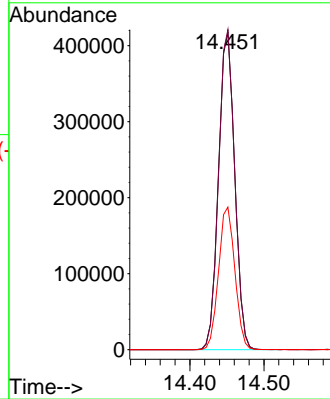
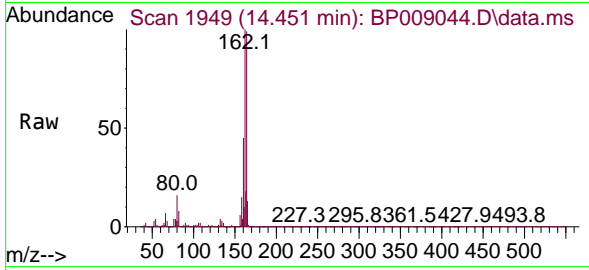


#39
 Acenaphthene-d10
 Concen: 20.000 ng
 RT: 14.451 min Scan# 1949
 Delta R.T. 0.006 min
 Lab File: BP009044.D
 Acq: 07 Feb 2022 13:26

Instrument :
 BNA_P
 ClientSampleId :
 SSTDICC060

Tgt Ion:164 Resp: 634429

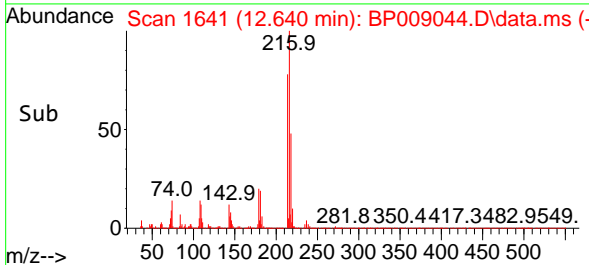
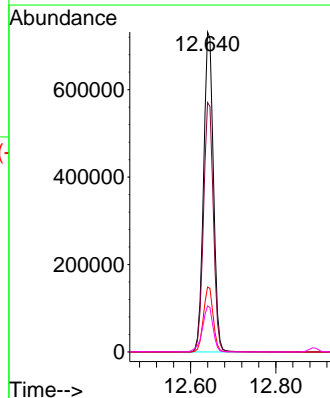
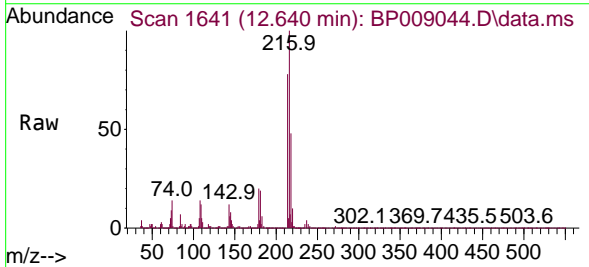
Ion	Ratio	Lower	Upper
164	100		
162	100.8	79.9	119.9
160	44.9	35.5	53.3

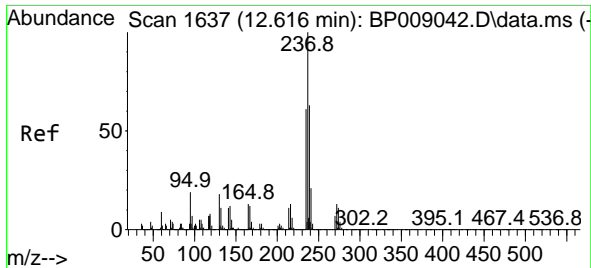


#40
 1,2,4,5-Tetrachlorobenzene
 Concen: 57.778 ng
 RT: 12.640 min Scan# 1641
 Delta R.T. 0.000 min
 Lab File: BP009044.D
 Acq: 07 Feb 2022 13:26

Tgt Ion:216 Resp: 1169151

Ion	Ratio	Lower	Upper
216	100		
214	78.4	63.1	94.7
179	20.2	16.0	24.0
108	15.4	11.9	17.9



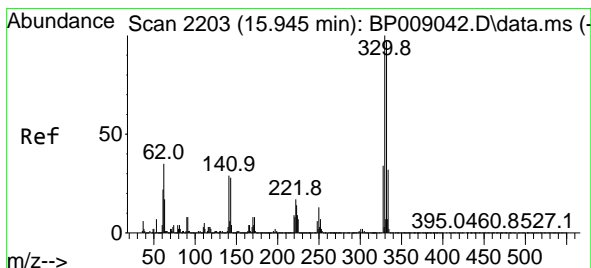
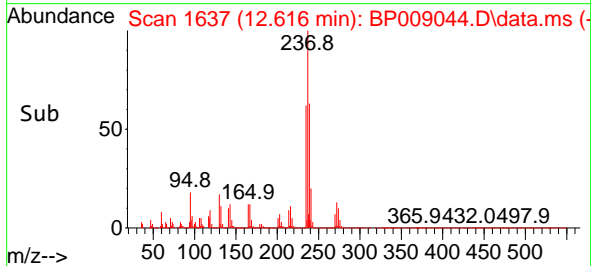
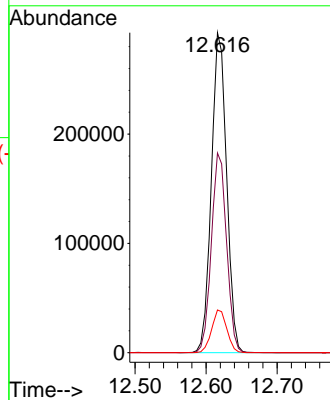
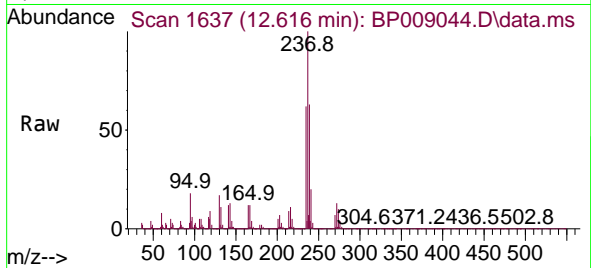


#41
 Hexachlorocyclopentadiene
 Concen: 84.045 ng
 RT: 12.616 min Scan# 10
 Delta R.T. -0.000 min
 Lab File: BP009044.D
 Acq: 07 Feb 2022 13:26

Instrument :
 BNA_P
 ClientSampleId :
 SSTDICC060

Tgt Ion:237 Resp: 435184

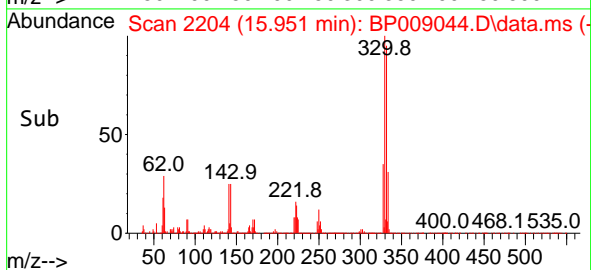
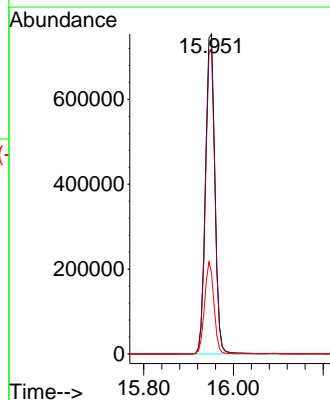
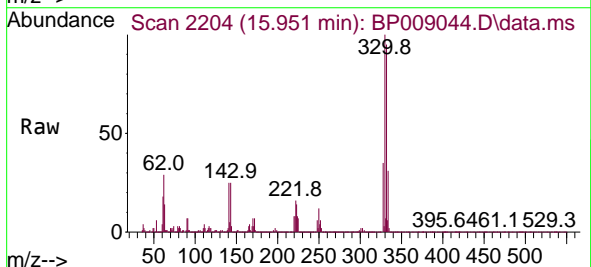
Ion	Ratio	Lower	Upper
237	100		
235	62.4	42.9	82.9
272	13.4	0.0	33.8

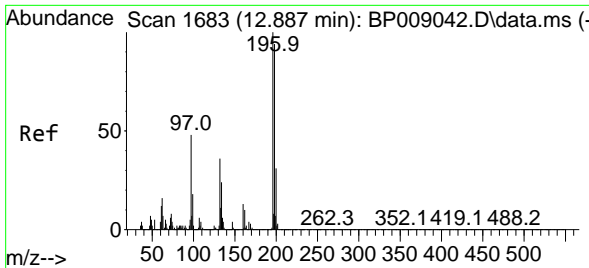


#42
 2,4,6-Tribromophenol
 Concen: 126.690 ng
 RT: 15.951 min Scan# 2204
 Delta R.T. 0.006 min
 Lab File: BP009044.D
 Acq: 07 Feb 2022 13:26

Tgt Ion:330 Resp: 1101429

Ion	Ratio	Lower	Upper
330	100		
332	95.8	77.0	115.4
141	28.7	21.3	31.9

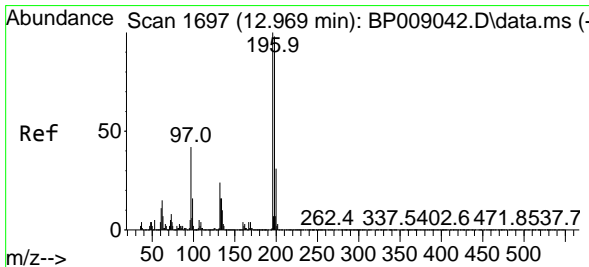
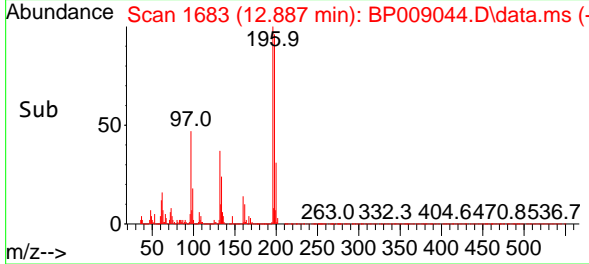
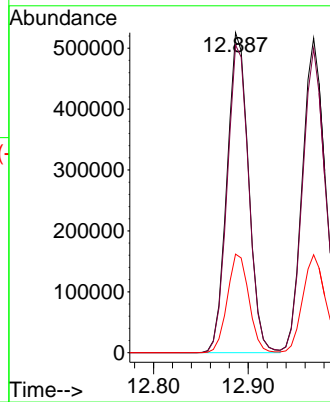
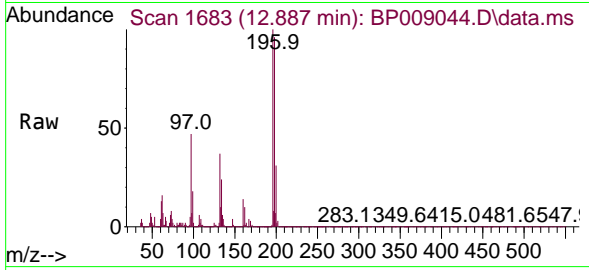




#43
 2,4,6-Trichlorophenol
 Concen: 60.875 ng
 RT: 12.887 min Scan# 1683
 Delta R.T. 0.000 min
 Lab File: BP009044.D
 Acq: 07 Feb 2022 13:26

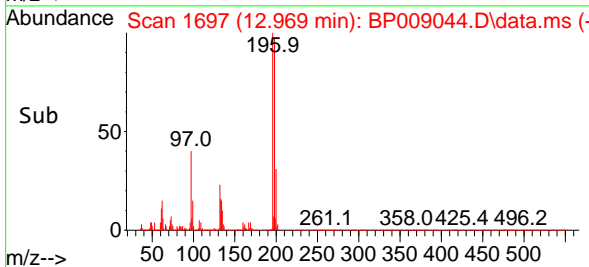
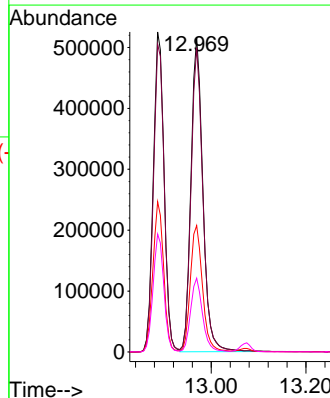
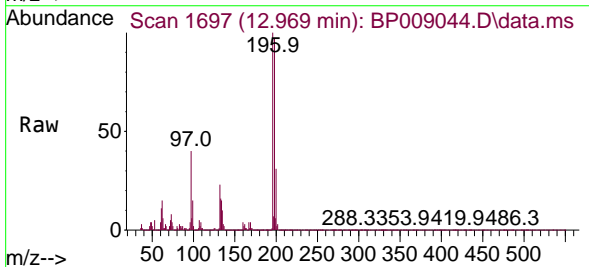
Instrument : BNA_P
 Client Sample Id : SSTDICC060

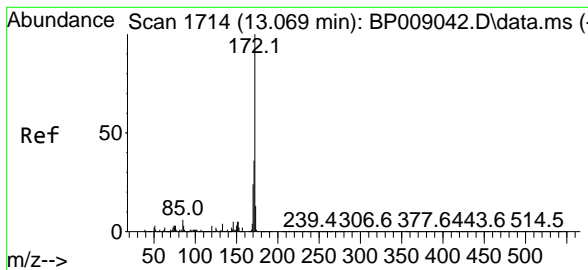
Tgt Ion	Resp	Lower	Upper
196	100		
198	96.1	77.8	116.8
200	30.8	24.7	37.1



#44
 2,4,5-Trichlorophenol
 Concen: 61.466 ng
 RT: 12.969 min Scan# 1697
 Delta R.T. 0.000 min
 Lab File: BP009044.D
 Acq: 07 Feb 2022 13:26

Tgt Ion	Resp	Lower	Upper
196	100		
198	96.7	77.7	116.5
97	40.2	29.6	44.4
132	23.4	18.7	28.1



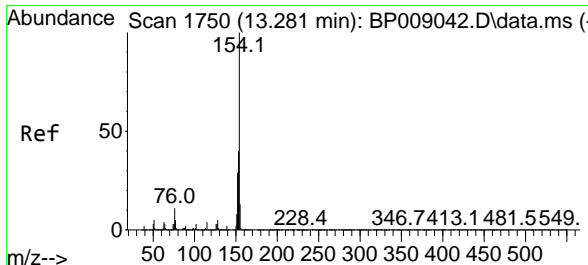
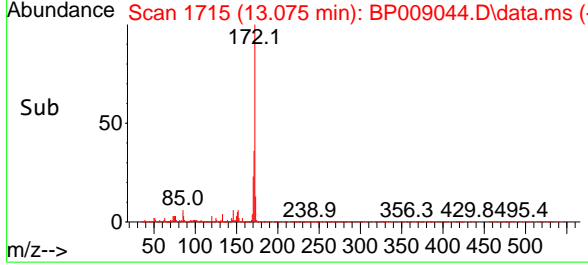
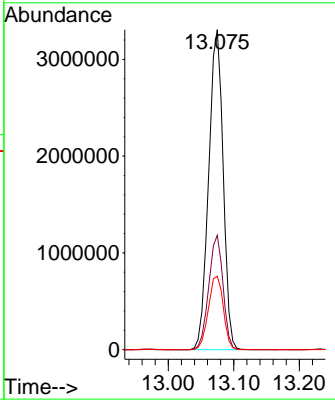
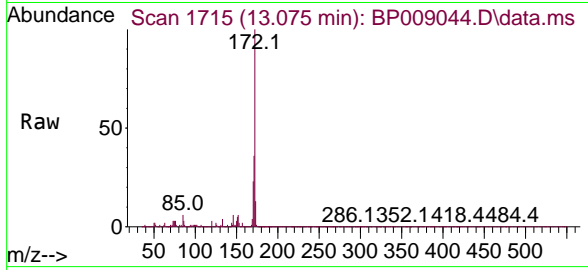


#45
 2-Fluorobiphenyl
 Concen: 111.264 ng
 RT: 13.075 min Scan# 1715
 Delta R.T. 0.006 min
 Lab File: BP009044.D
 Acq: 07 Feb 2022 13:26

Instrument : BNA_P
 Client Sample Id : SSTDICC060

Tgt Ion:172 Resp: 5056474

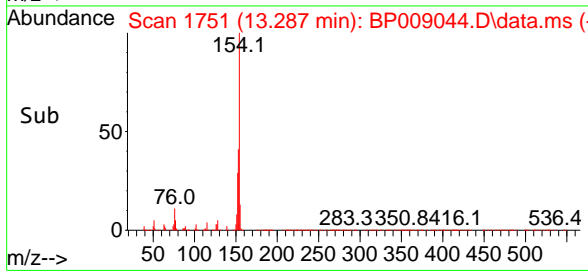
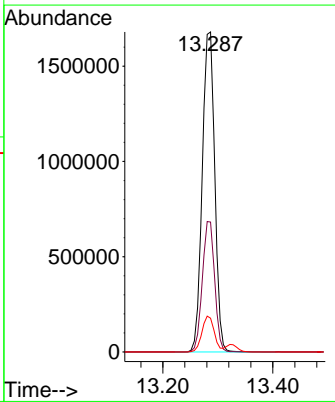
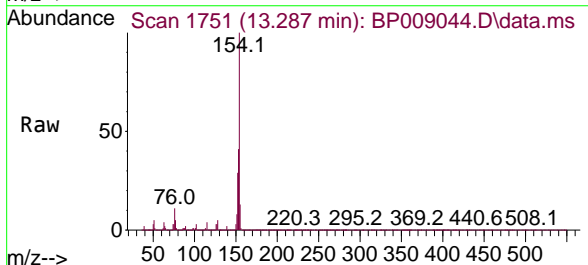
Ion	Ratio	Lower	Upper
172	100		
171	35.7	29.3	43.9
170	23.0	19.5	29.3

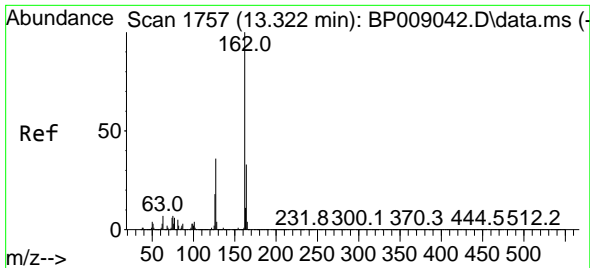


#46
 1,1'-Biphenyl
 Concen: 56.692 ng
 RT: 13.287 min Scan# 1751
 Delta R.T. 0.006 min
 Lab File: BP009044.D
 Acq: 07 Feb 2022 13:26

Tgt Ion:154 Resp: 2647145

Ion	Ratio	Lower	Upper
154	100		
153	40.6	20.3	60.3
76	10.6	0.0	31.1



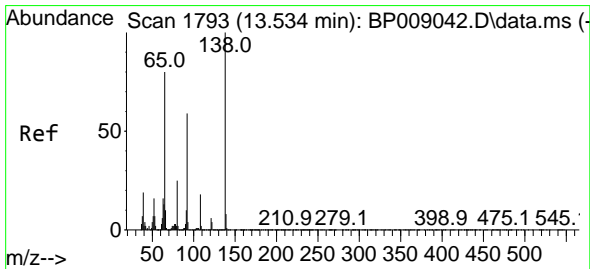
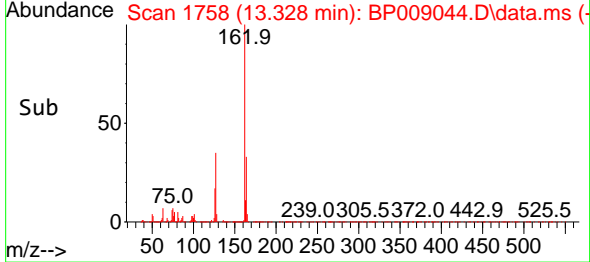
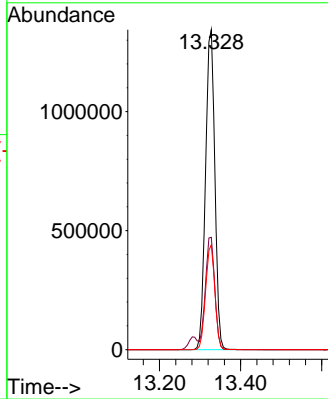
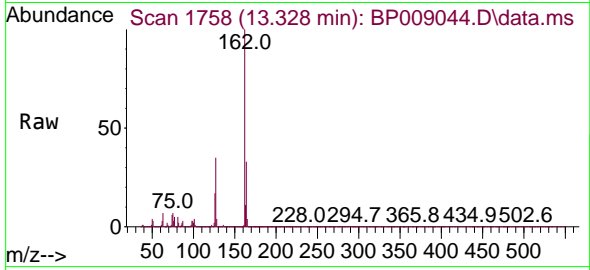


#47
 2-Chloronaphthalene
 Concen: 57.054 ng
 RT: 13.328 min Scan# 1757
 Delta R.T. 0.006 min
 Lab File: BP009044.D
 Acq: 07 Feb 2022 13:26

Instrument : BNA_P
 ClientSampleId : SSTDICC060

Tgt Ion:162 Resp: 2127543

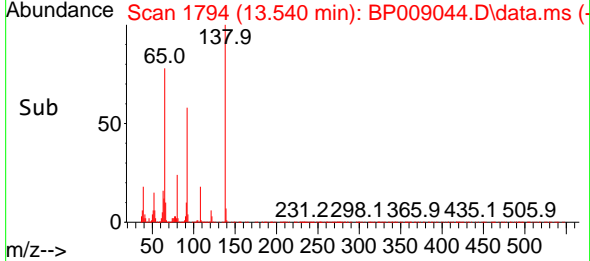
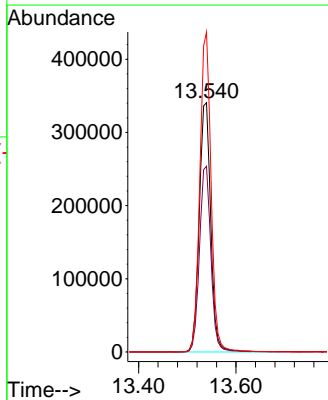
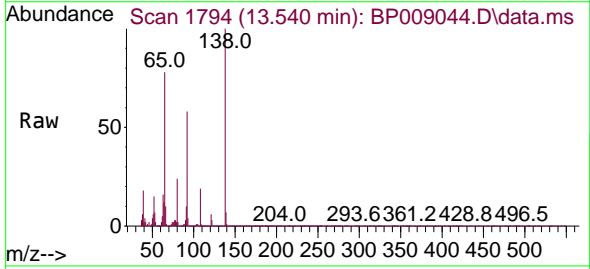
Ion	Ratio	Lower	Upper
162	100		
127	35.1	28.4	42.6
164	32.7	26.8	40.2

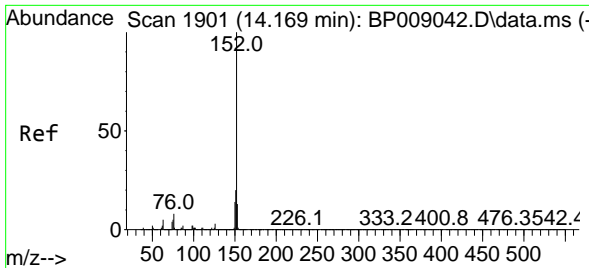


#48
 2-Nitroaniline
 Concen: 63.439 ng
 RT: 13.540 min Scan# 1794
 Delta R.T. 0.006 min
 Lab File: BP009044.D
 Acq: 07 Feb 2022 13:26

Tgt Ion: 65 Resp: 560036

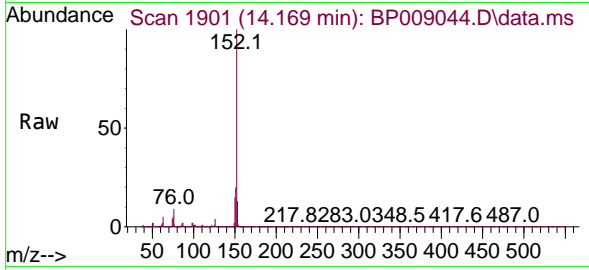
Ion	Ratio	Lower	Upper
65	100		
92	74.5	62.2	93.4
138	128.4	105.8	158.8



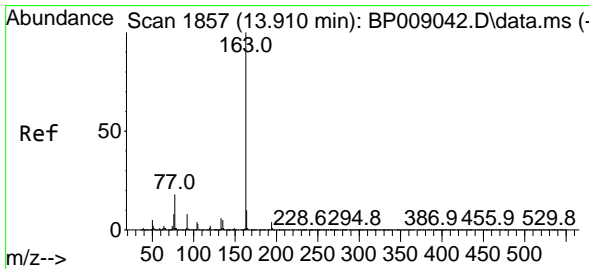
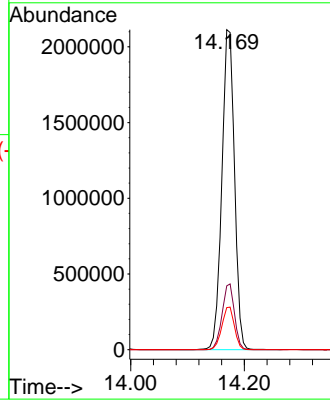
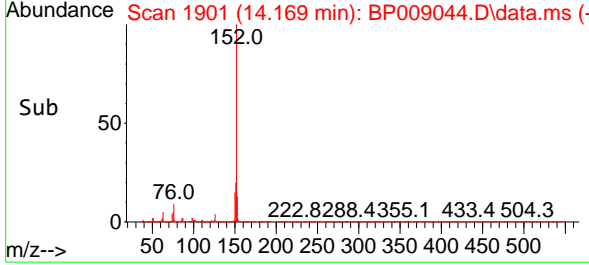


#49
 Acenaphthylene
 Concen: 57.941 ng
 RT: 14.169 min Scan# 1901
 Delta R.T. 0.000 min
 Lab File: BP009044.D
 Acq: 07 Feb 2022 13:26

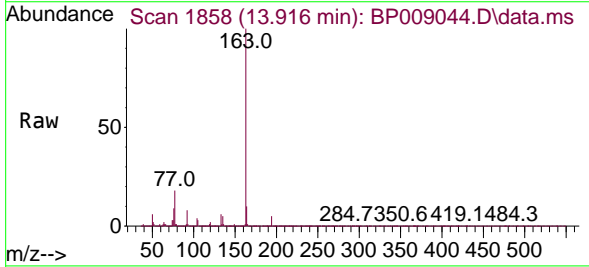
Instrument :
 BNA_P
 ClientSampleId :
 SSTDICC060



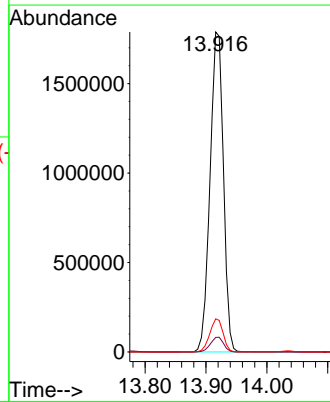
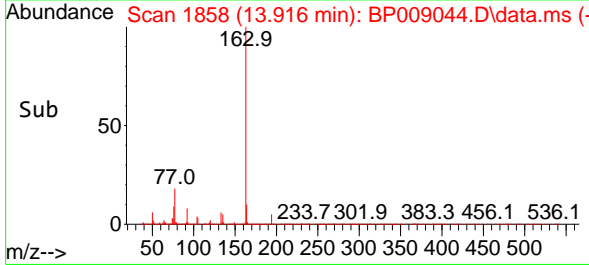
Tgt Ion:152 Resp: 3272325
 Ion Ratio Lower Upper
 152 100
 151 20.0 16.1 24.1
 153 13.2 10.6 16.0

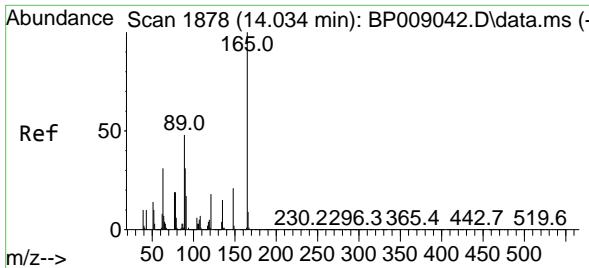


#50
 Dimethylphthalate
 Concen: 59.643 ng
 RT: 13.916 min Scan# 1858
 Delta R.T. 0.006 min
 Lab File: BP009044.D
 Acq: 07 Feb 2022 13:26



Tgt Ion:163 Resp: 2728553
 Ion Ratio Lower Upper
 163 100
 194 4.6 3.8 5.6
 164 10.3 8.2 12.2

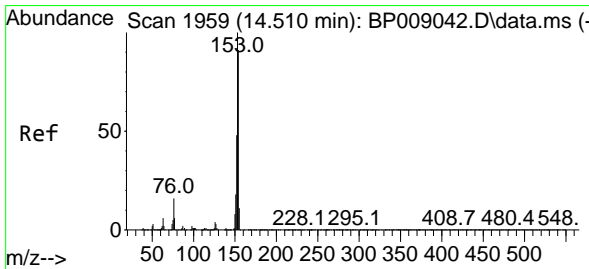
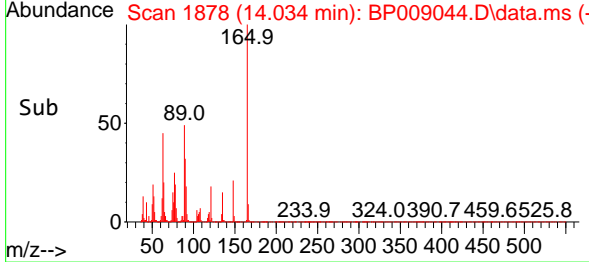
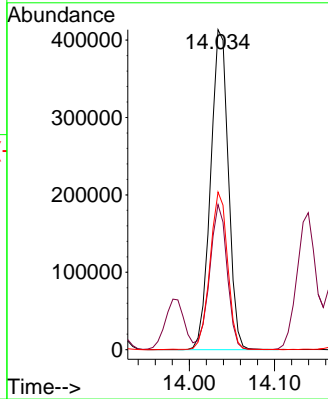
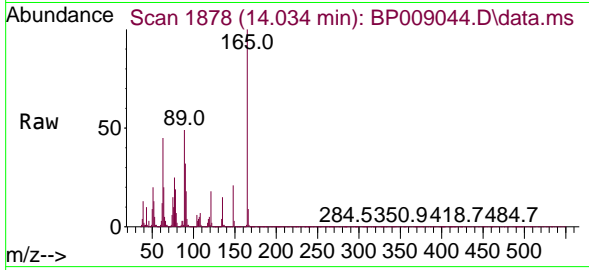




#51
 2,6-Dinitrotoluene
 Concen: 62.905 ng
 RT: 14.034 min Scan# 1878
 Delta R.T. 0.000 min
 Lab File: BP009044.D
 Acq: 07 Feb 2022 13:26

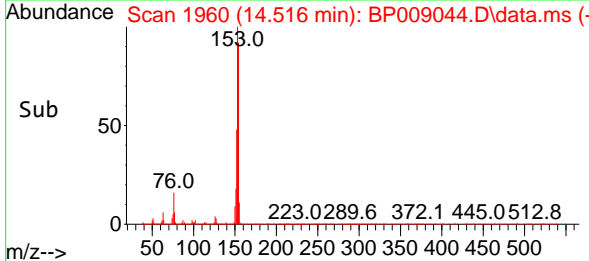
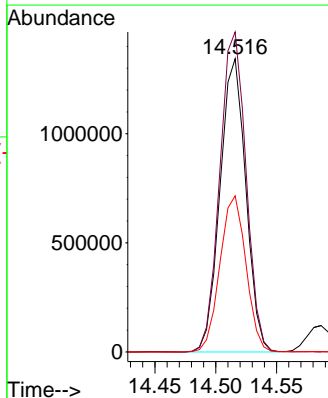
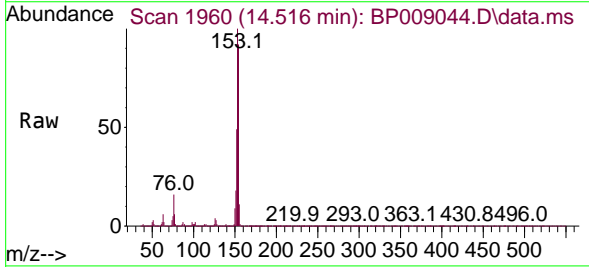
Instrument : BNA_P
 Client Sample Id : SSTDICC060

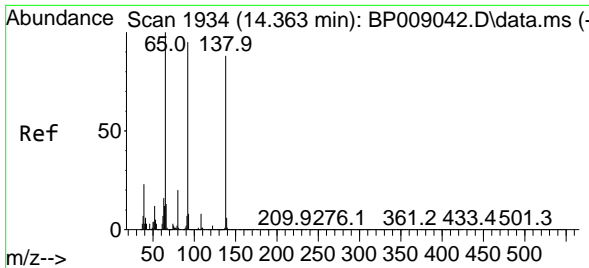
Tgt Ion	Resp	Lower	Upper
165	100		
63	45.4	31.8	47.8
89	49.2	36.1	54.1



#52
 Acenaphthene
 Concen: 58.095 ng
 RT: 14.516 min Scan# 1960
 Delta R.T. 0.006 min
 Lab File: BP009044.D
 Acq: 07 Feb 2022 13:26

Tgt Ion	Resp	Lower	Upper
154	100		
153	109.1	89.4	134.2
152	53.2	42.6	63.8

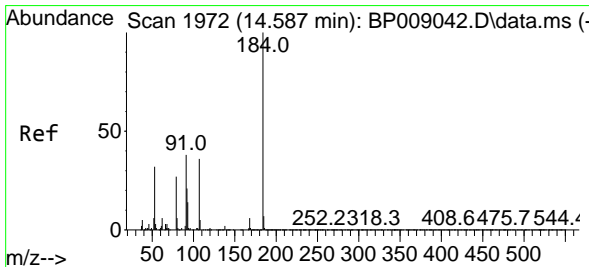
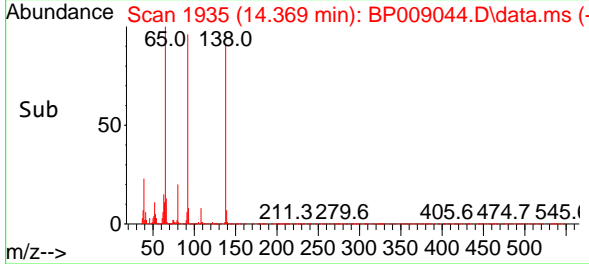
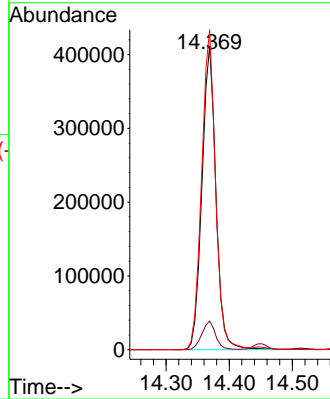
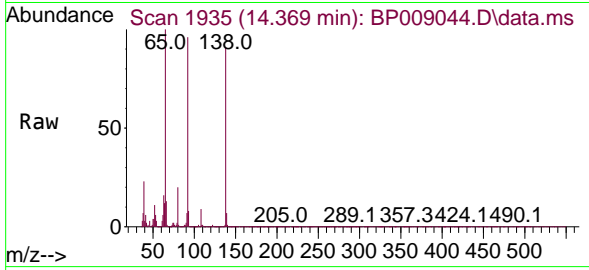




#53
 3-Nitroaniline
 Concen: 63.328 ng
 RT: 14.369 min Scan# 1935
 Delta R.T. 0.006 min
 Lab File: BP009044.D
 Acq: 07 Feb 2022 13:26

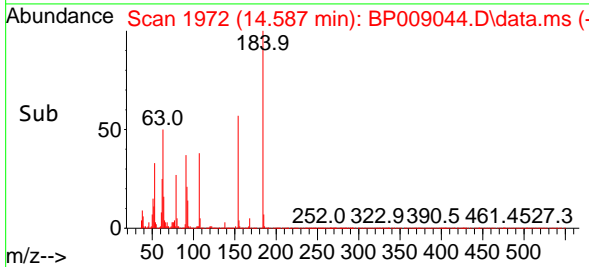
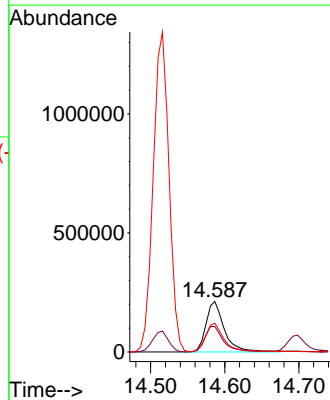
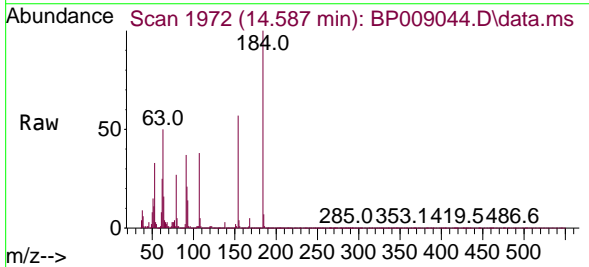
Instrument :
 BNA_P
 ClientSampleId :
 SSTDICC060

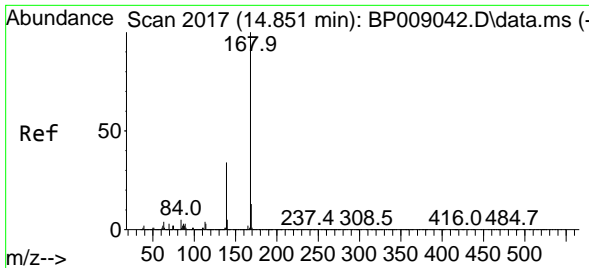
Tgt Ion:138 Resp: 630856
 Ion Ratio Lower Upper
 138 100
 108 9.4 8.0 12.0
 92 105.3 81.7 122.5



#54
 2,4-Dinitrophenol
 Concen: 69.741 ng
 RT: 14.587 min Scan# 1972
 Delta R.T. -0.000 min
 Lab File: BP009044.D
 Acq: 07 Feb 2022 13:26

Tgt Ion:184 Resp: 365079
 Ion Ratio Lower Upper
 184 100
 63 50.2 35.6 53.4
 154 57.1 43.4 65.0



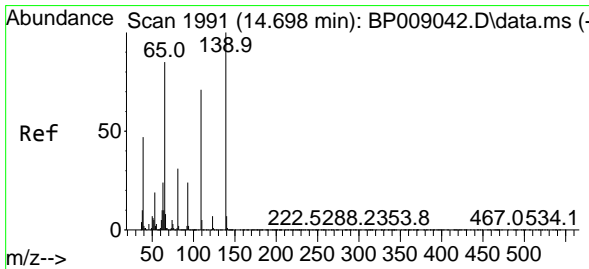
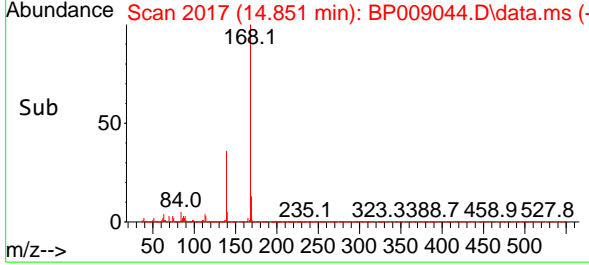
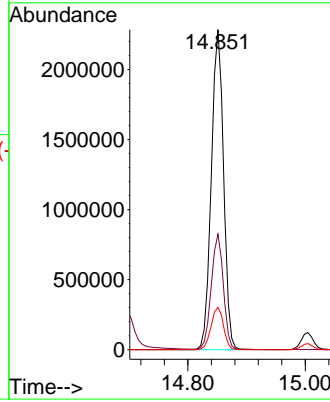
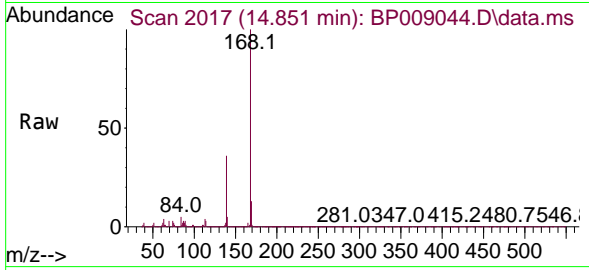


#55
 Dibenzofuran
 Concen: 57.373 ng
 RT: 14.851 min Scan# 2017
 Delta R.T. 0.000 min
 Lab File: BP009044.D
 Acq: 07 Feb 2022 13:26

Instrument :
 BNA_P
 ClientSampleId :
 SSTDICC060

Tgt Ion:168 Resp: 3296749

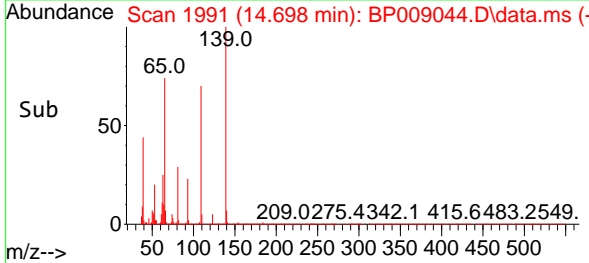
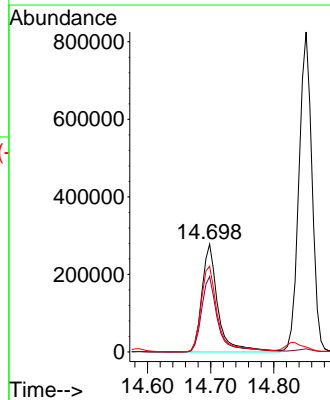
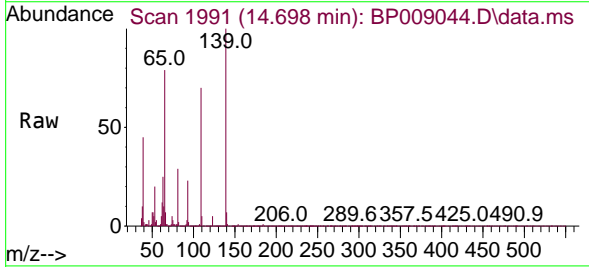
Ion	Ratio	Lower	Upper
168	100		
139	36.1	27.4	41.0
169	13.2	10.9	16.3

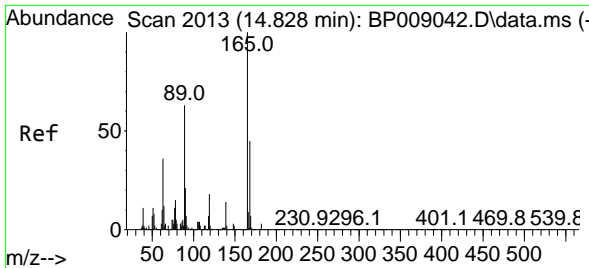


#56
 4-Nitrophenol
 Concen: 66.419 ng
 RT: 14.698 min Scan# 1991
 Delta R.T. 0.000 min
 Lab File: BP009044.D
 Acq: 07 Feb 2022 13:26

Tgt Ion:139 Resp: 489069

Ion	Ratio	Lower	Upper
139	100		
109	69.8	42.2	82.2
65	79.3	57.3	97.3

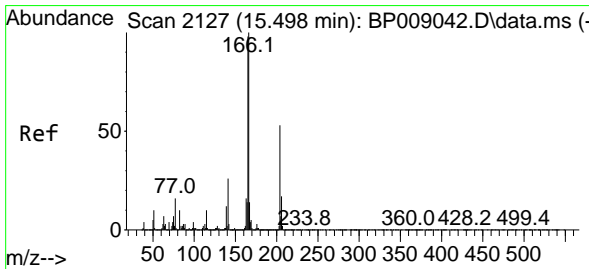
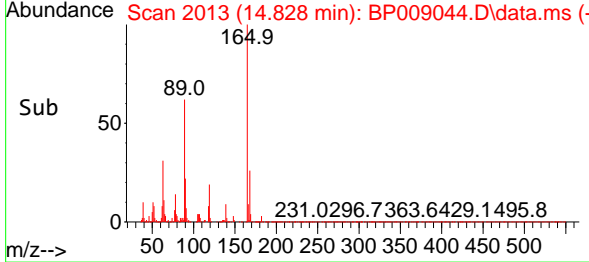
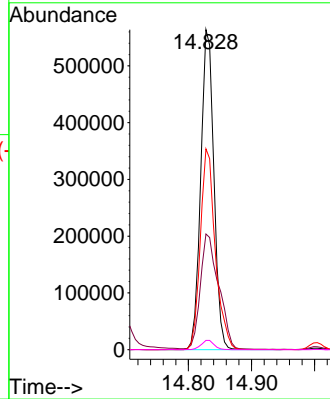
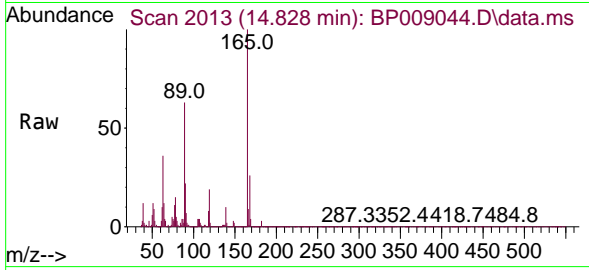




#57
 2,4-Dinitrotoluene
 Concen: 64.549 ng
 RT: 14.828 min Scan# 2013
 Delta R.T. 0.000 min
 Lab File: BP009044.D
 Acq: 07 Feb 2022 13:26

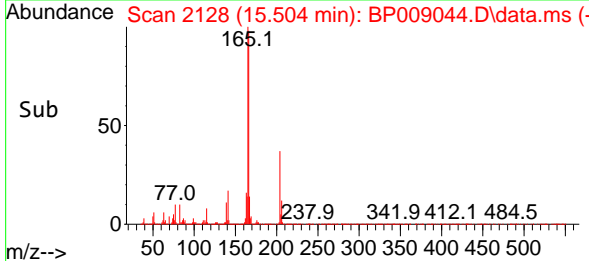
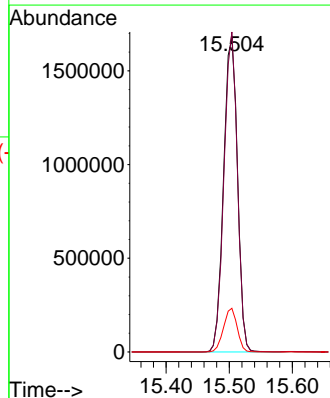
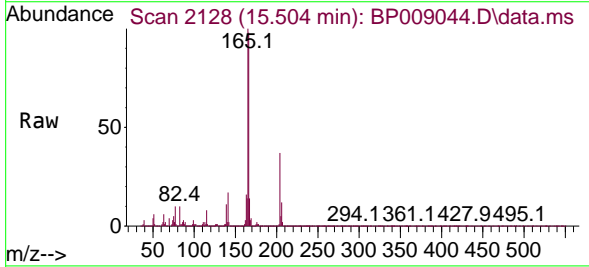
Instrument : BNA_P
 Client Sample Id : SSTDICC060

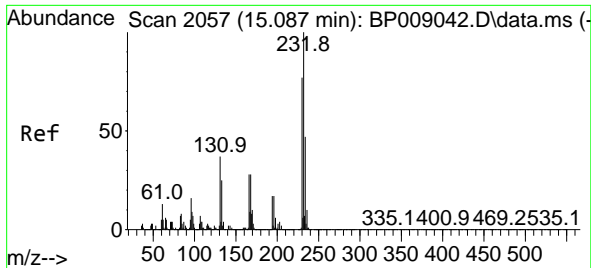
Tgt Ion	Resp	Lower	Upper
165	100		
63	36.1	23.3	34.9
89	62.8	44.2	66.4
182	2.9	2.6	4.0



#58
 Fluorene
 Concen: 57.769 ng
 RT: 15.504 min Scan# 2128
 Delta R.T. 0.006 min
 Lab File: BP009044.D
 Acq: 07 Feb 2022 13:26

Tgt Ion	Resp	Lower	Upper
166	100		
165	102.0	77.2	115.8
167	13.9	11.2	16.8





#59
 2,3,4,6-Tetrachlorophenol
 Concen: 59.420 ng
 RT: 15.004 min Scan# 2057
 Delta R.T. -0.082 min
 Lab File: BP009044.D
 Acq: 07 Feb 2022 13:26

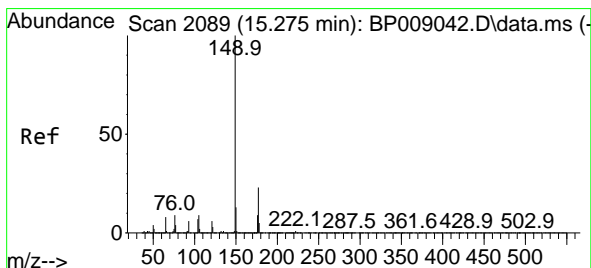
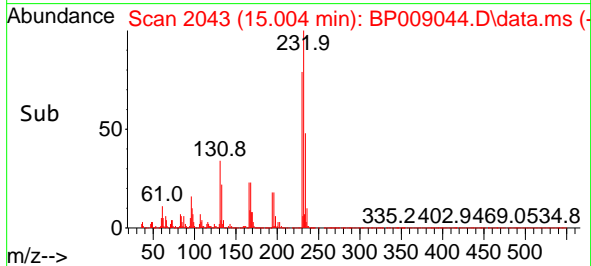
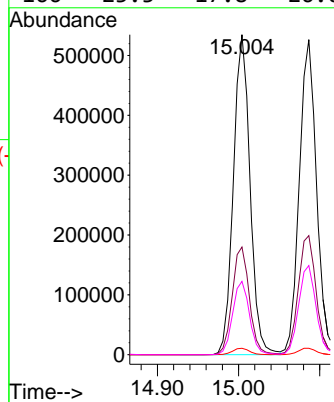
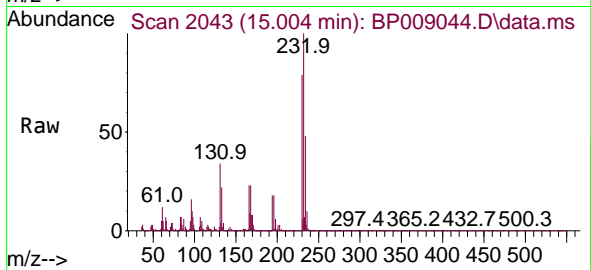
Instrument :

BNA_P

ClientSampleId :

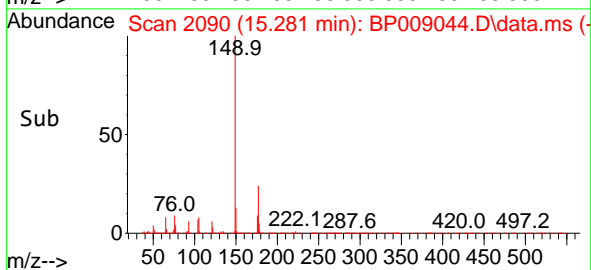
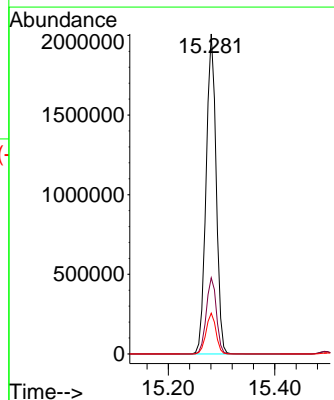
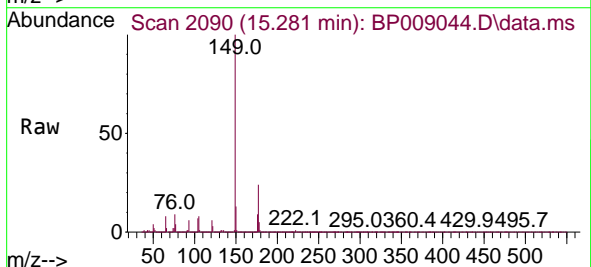
SSTDICC060

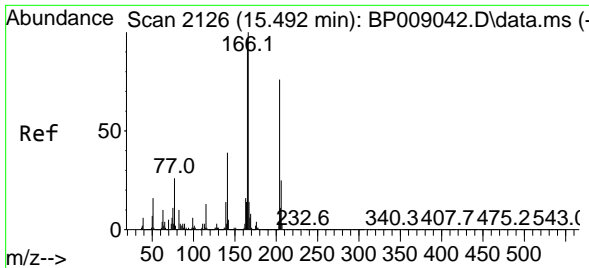
Tgt Ion:232 Resp: 761454
 Ion Ratio Lower Upper
 232 100
 131 34.6 25.2 37.8
 130 2.1 1.4 2.2
 166 23.3 17.8 26.6



#60
 Diethylphthalate
 Concen: 60.956 ng
 RT: 15.281 min Scan# 2090
 Delta R.T. 0.006 min
 Lab File: BP009044.D
 Acq: 07 Feb 2022 13:26

Tgt Ion:149 Resp: 2616866
 Ion Ratio Lower Upper
 149 100
 177 23.8 19.9 29.9
 150 12.7 10.3 15.5

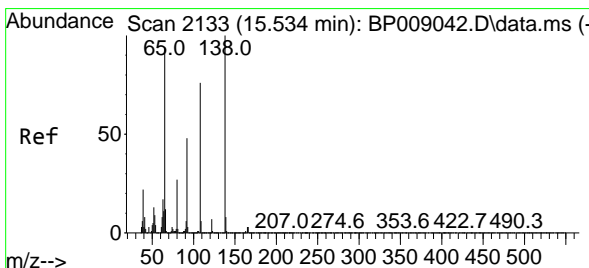
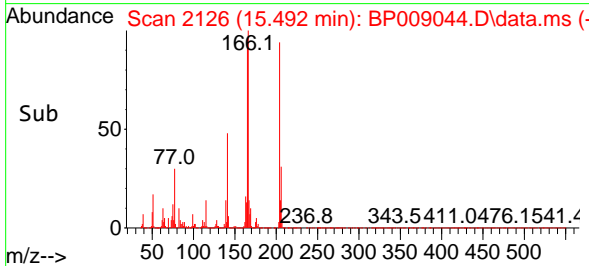
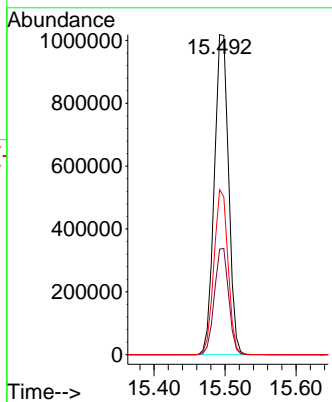
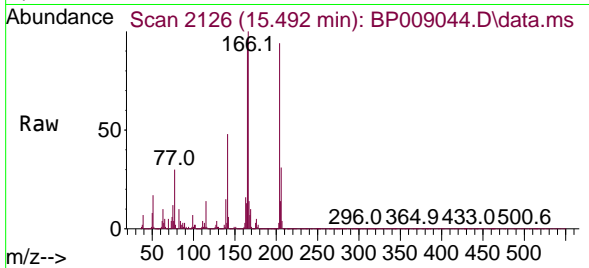




#61
 4-Chlorophenyl-phenylether
 Concen: 58.966 ng
 RT: 15.492 min Scan# 2126
 Delta R.T. -0.000 min
 Lab File: BP009044.D
 Acq: 07 Feb 2022 13:26

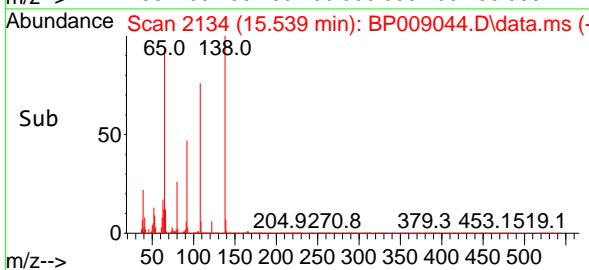
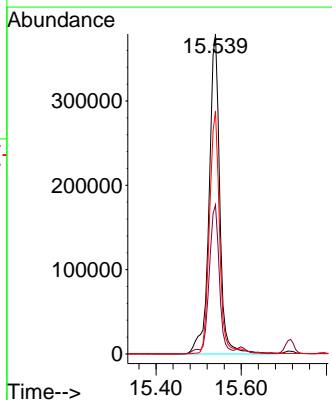
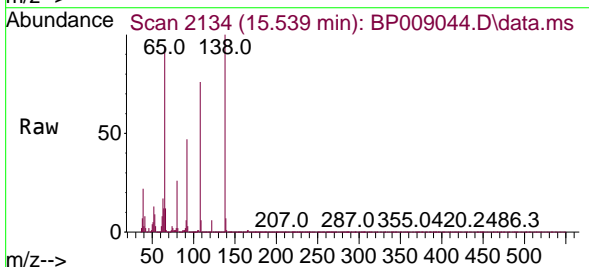
Instrument : BNA_P
 ClientSampleId : SSTDICC060

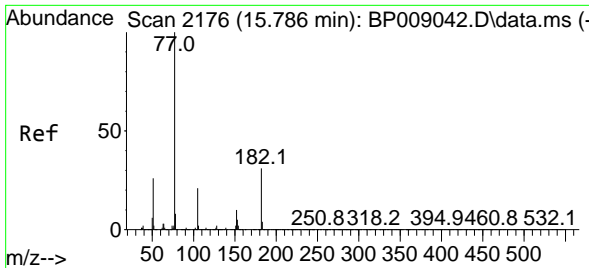
Tgt Ion	Resp	Lower	Upper
204	100		
206	33.0	26.3	39.5
141	51.5	39.1	58.7



#62
 4-Nitroaniline
 Concen: 65.072 ng
 RT: 15.539 min Scan# 2134
 Delta R.T. 0.006 min
 Lab File: BP009044.D
 Acq: 07 Feb 2022 13:26

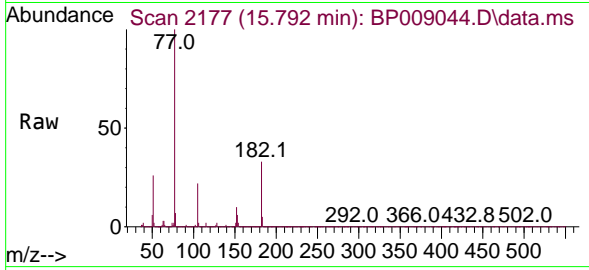
Tgt Ion	Resp	Lower	Upper
138	100		
92	46.6	24.3	64.3
108	76.0	44.8	84.8





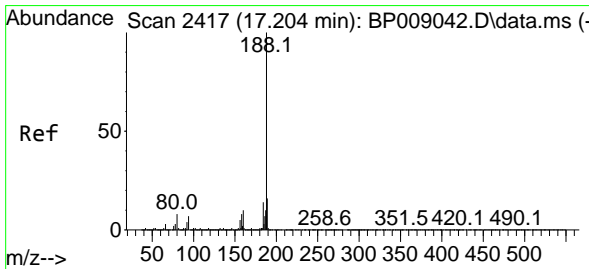
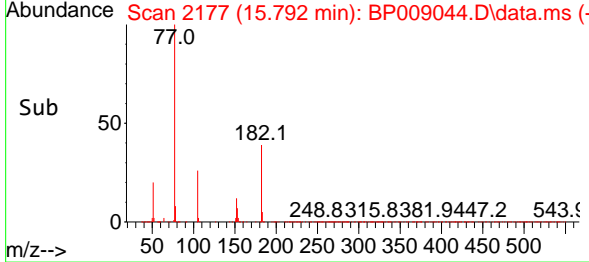
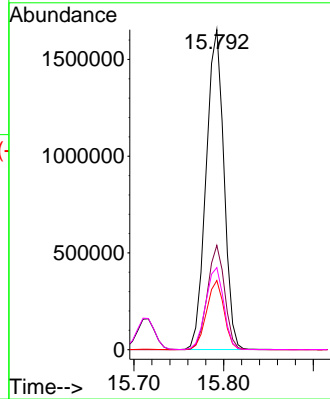
#63
 Azobenzene
 Concen: 61.588 ng
 RT: 15.792 min Scan# 2177
 Delta R.T. 0.006 min
 Lab File: BP009044.D
 Acq: 07 Feb 2022 13:26

Instrument : BNA_P
 ClientSampleId : SSTDICC060



Tgt Ion: 77 Resp: 2275006

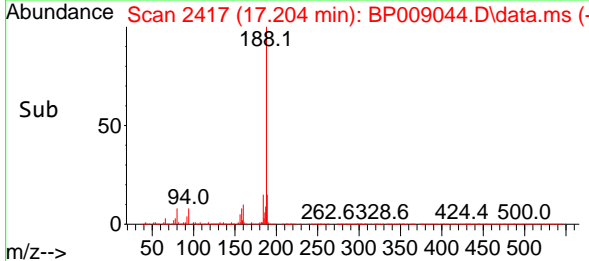
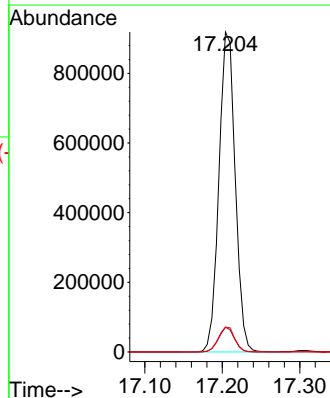
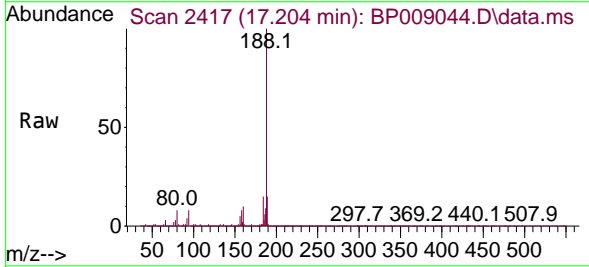
Ion	Ratio	Lower	Upper
77	100		
182	32.6	15.3	55.3
105	21.6	3.2	43.2
51	25.7	3.4	43.4

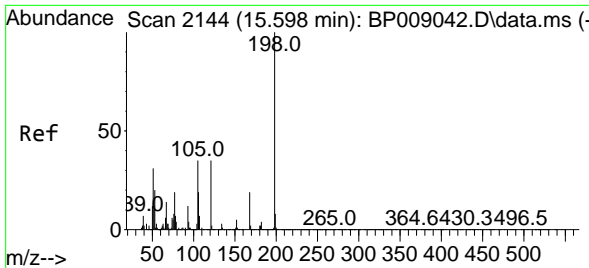


#64
 Phenanthrene-d10
 Concen: 20.000 ng
 RT: 17.204 min Scan# 2417
 Delta R.T. 0.000 min
 Lab File: BP009044.D
 Acq: 07 Feb 2022 13:26

Tgt Ion: 188 Resp: 1340071

Ion	Ratio	Lower	Upper
188	100		
94	7.7	6.8	10.2
80	7.8	7.2	10.8



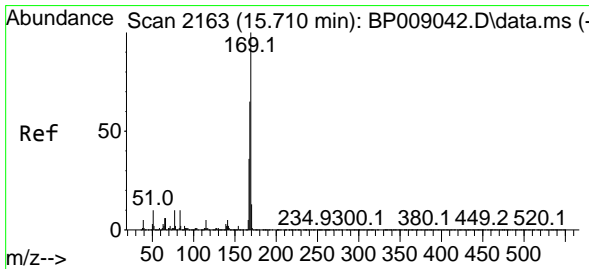
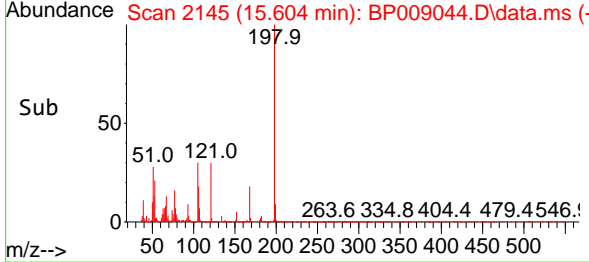
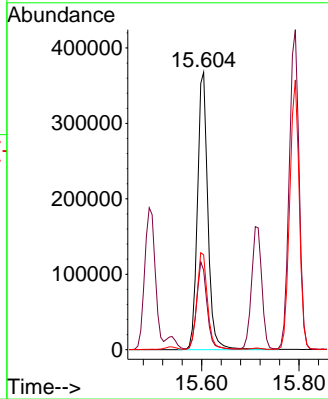
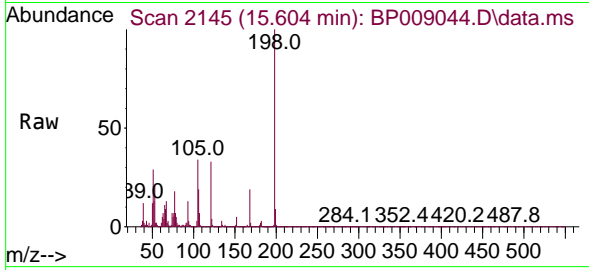


#65
 4,6-Dinitro-2-methylphenol
 Concen: 65.423 ng
 RT: 15.604 min Scan# 2145
 Delta R.T. 0.006 min
 Lab File: BP009044.D
 Acq: 07 Feb 2022 13:26

Instrument : BNA_P
 ClientSampleId : SSTDICC060

Tgt Ion:198 Resp: 547546

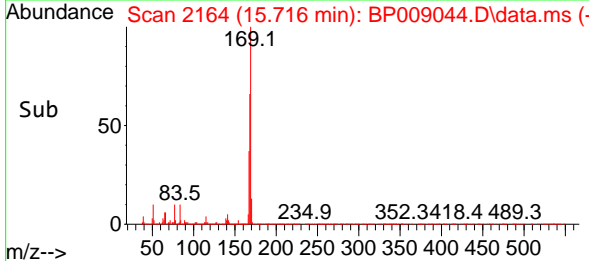
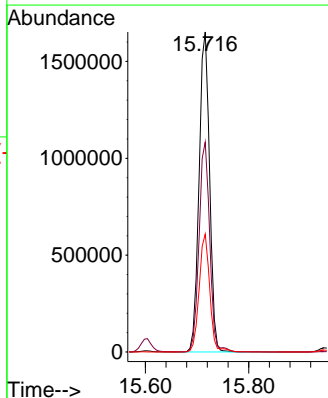
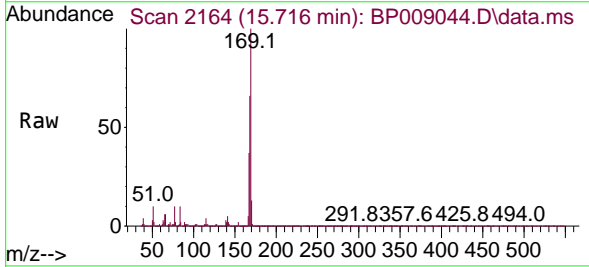
Ion	Ratio	Lower	Upper
198	100		
51	28.7	6.8	46.8
105	34.2	14.4	54.4

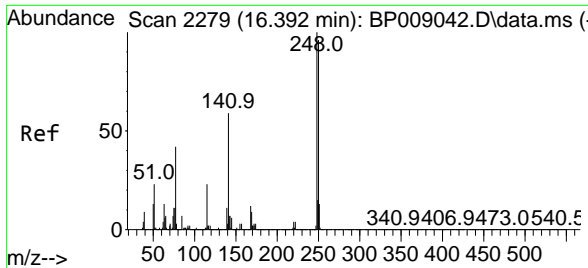


#66
 n-Nitrosodiphenylamine
 Concen: 57.091 ng
 RT: 15.716 min Scan# 2164
 Delta R.T. 0.006 min
 Lab File: BP009044.D
 Acq: 07 Feb 2022 13:26

Tgt Ion:169 Resp: 2327727

Ion	Ratio	Lower	Upper
169	100		
168	65.6	53.3	79.9
167	36.8	29.0	43.6



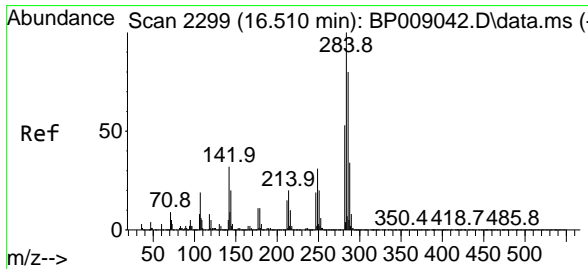
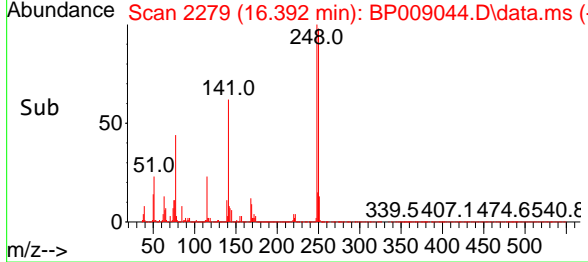
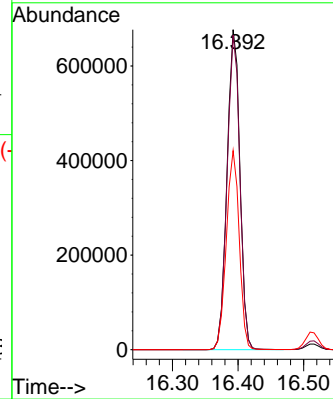
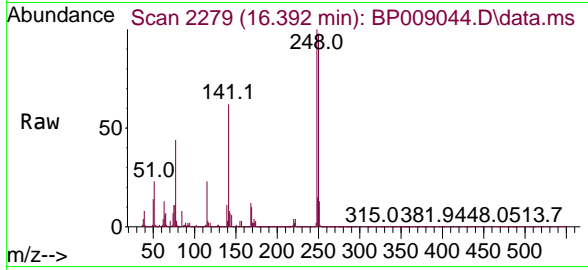


#67
 4-Bromophenyl-phenylether
 Concen: 59.278 ng
 RT: 16.392 min Scan# 21
 Delta R.T. 0.000 min
 Lab File: BP009044.D
 Acq: 07 Feb 2022 13:26

Instrument :
 BNA_P
 ClientSampleId :
 SSTDICC060

Tgt Ion:248 Resp: 919684

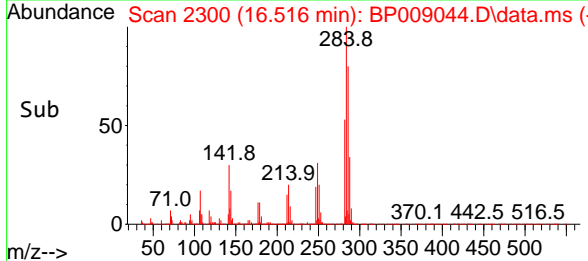
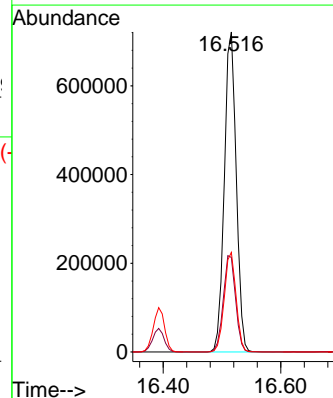
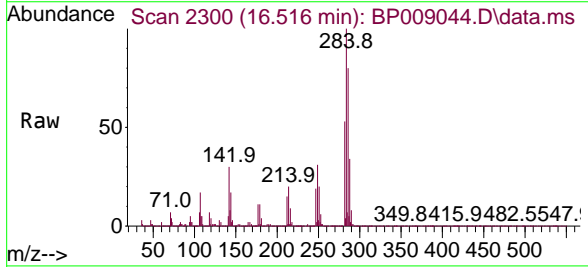
Ion	Ratio	Lower	Upper
248	100		
250	98.3	77.6	116.4
141	62.2	47.4	71.2

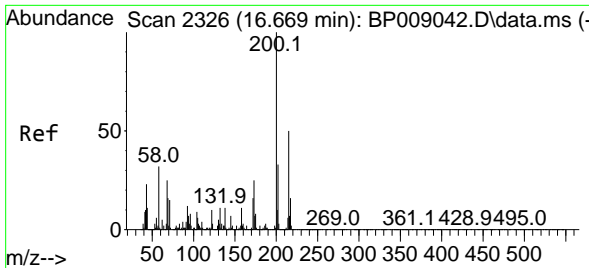


#68
 Hexachlorobenzene
 Concen: 58.392 ng
 RT: 16.516 min Scan# 2300
 Delta R.T. 0.006 min
 Lab File: BP009044.D
 Acq: 07 Feb 2022 13:26

Tgt Ion:284 Resp: 1015855

Ion	Ratio	Lower	Upper
284	100		
142	29.6	22.4	33.6
249	31.1	24.4	36.6

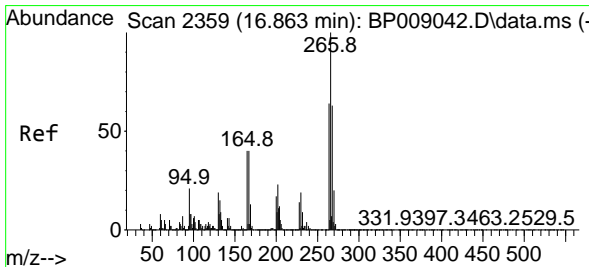
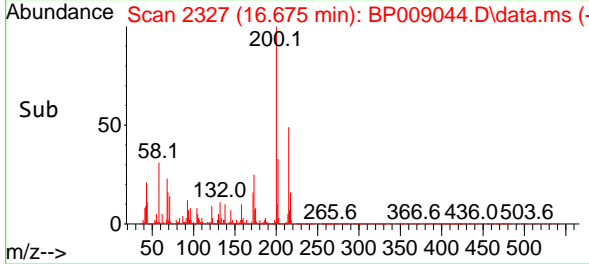
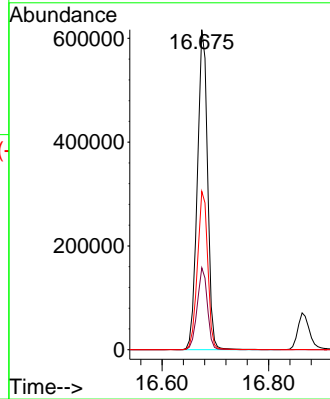
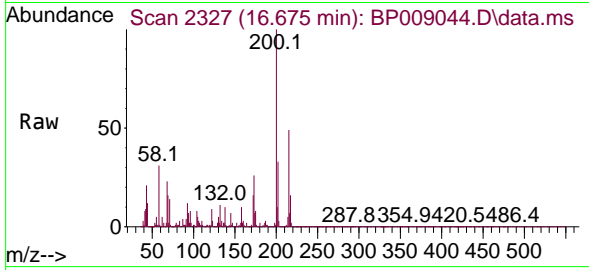




#69
 Atrazine
 Concen: 60.283 ng
 RT: 16.675 min Scan# 21
 Delta R.T. 0.006 min
 Lab File: BP009044.D
 Acq: 07 Feb 2022 13:26

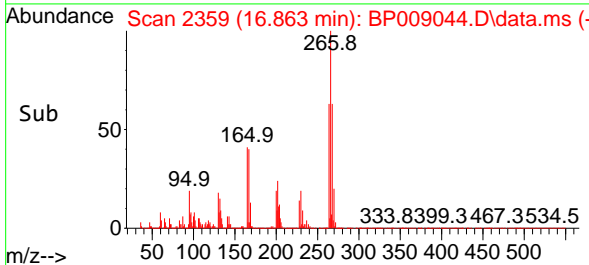
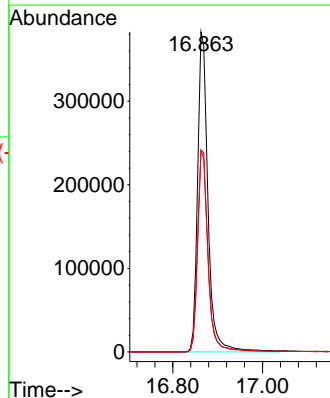
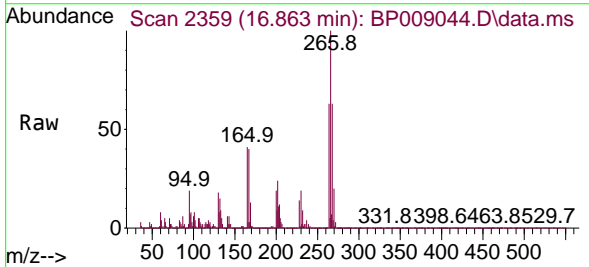
Instrument :
 BNA_P
 ClientSampleId :
 SSTDICC060

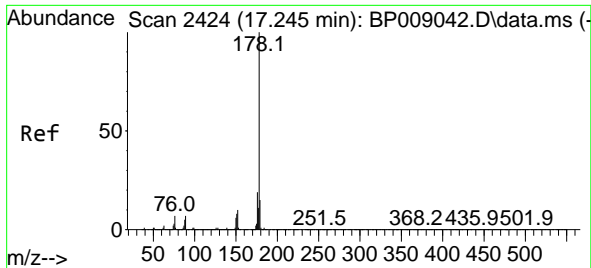
Tgt Ion:200 Resp: 821904
 Ion Ratio Lower Upper
 200 100
 173 25.6 6.5 46.5
 215 49.5 29.6 69.6



#70
 Pentachlorophenol
 Concen: 65.793 ng
 RT: 16.863 min Scan# 2359
 Delta R.T. -0.000 min
 Lab File: BP009044.D
 Acq: 07 Feb 2022 13:26

Tgt Ion:266 Resp: 613614
 Ion Ratio Lower Upper
 266 100
 268 62.8 50.9 76.3
 264 63.1 50.3 75.5



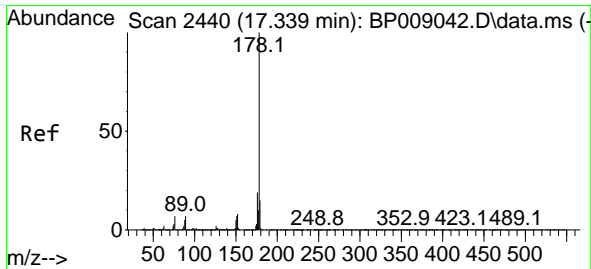
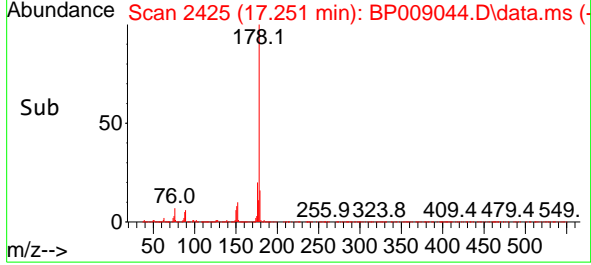
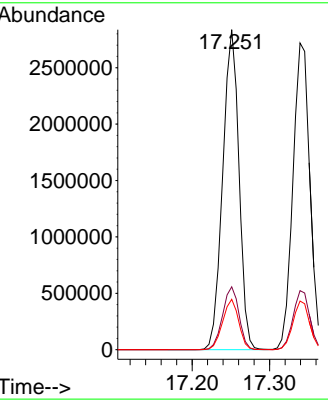
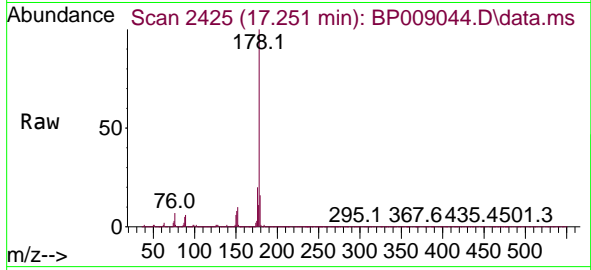


#71
 Phenanthrene
 Concen: 56.811 ng
 RT: 17.251 min Scan# 2425
 Delta R.T. 0.006 min
 Lab File: BP009044.D
 Acq: 07 Feb 2022 13:26

Instrument : BNA_P
 Client Sample Id : SSTDICC060

Tgt Ion:178 Resp: 4139426

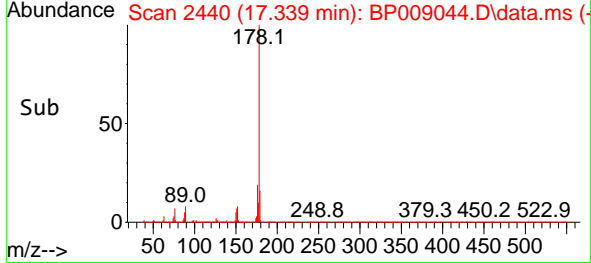
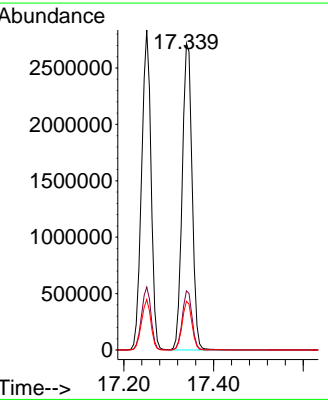
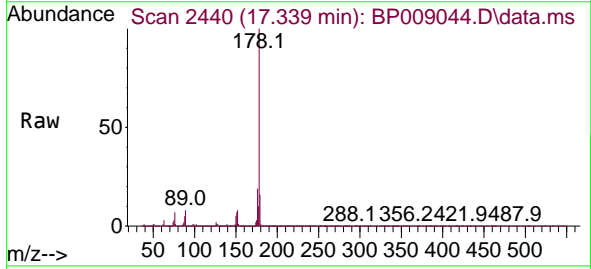
Ion	Ratio	Lower	Upper
178	100		
176	19.6	16.0	24.0
179	15.7	13.0	19.4

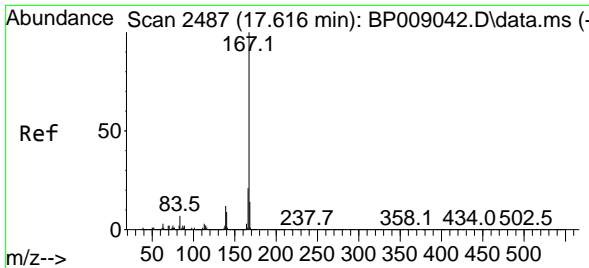


#72
 Anthracene
 Concen: 58.271 ng
 RT: 17.339 min Scan# 2440
 Delta R.T. 0.000 min
 Lab File: BP009044.D
 Acq: 07 Feb 2022 13:26

Tgt Ion:178 Resp: 4145412

Ion	Ratio	Lower	Upper
178	100		
176	19.2	15.1	22.7
179	15.9	12.8	19.2



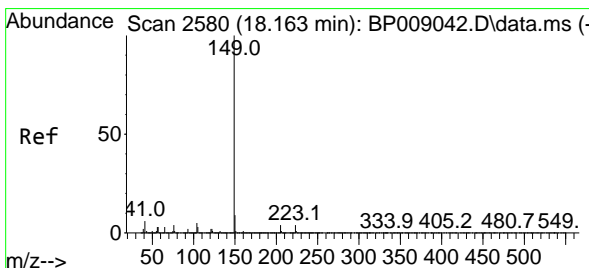
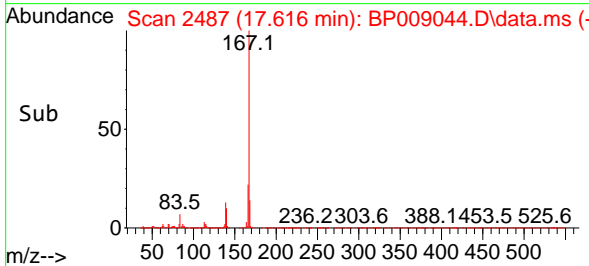
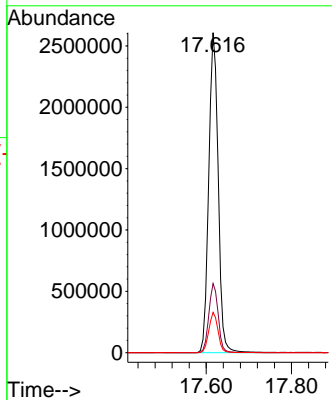
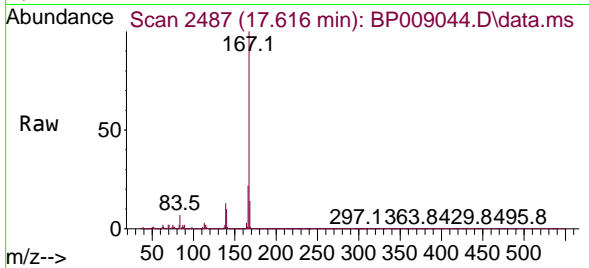


#73
 Carbazole
 Concen: 58.460 ng
 RT: 17.616 min Scan# 24
 Delta R.T. 0.000 min
 Lab File: BP009044.D
 Acq: 07 Feb 2022 13:26

Instrument :
 BNA_P
 ClientSampleId :
 SSTDICC060

Tgt Ion:167 Resp: 4002939

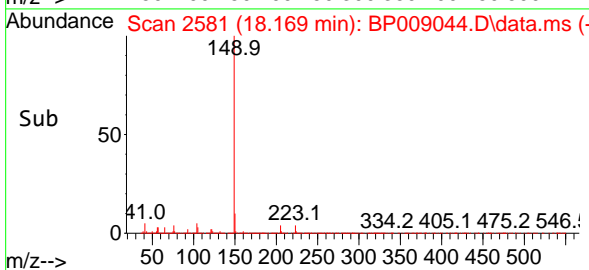
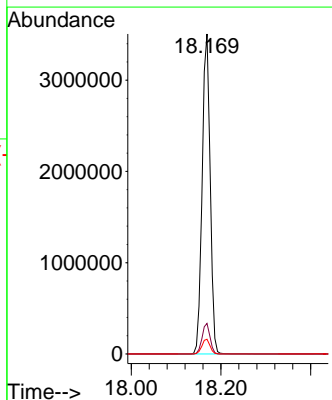
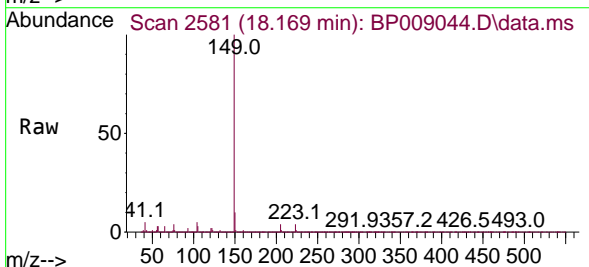
Ion	Ratio	Lower	Upper
167	100		
166	21.6	17.7	26.5
139	12.6	9.8	14.6

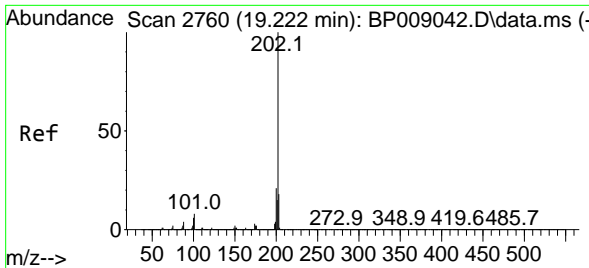


#74
 Di-n-butylphthalate
 Concen: 61.929 ng
 RT: 18.169 min Scan# 2581
 Delta R.T. 0.006 min
 Lab File: BP009044.D
 Acq: 07 Feb 2022 13:26

Tgt Ion:149 Resp: 4331728

Ion	Ratio	Lower	Upper
149	100		
150	9.5	7.9	11.9
104	4.6	3.7	5.5



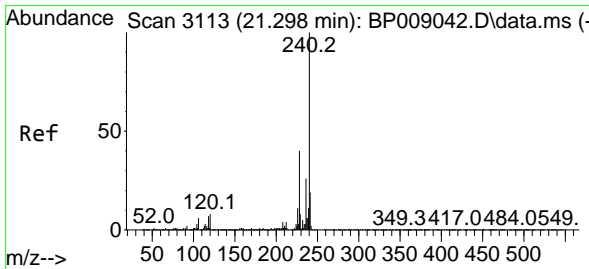
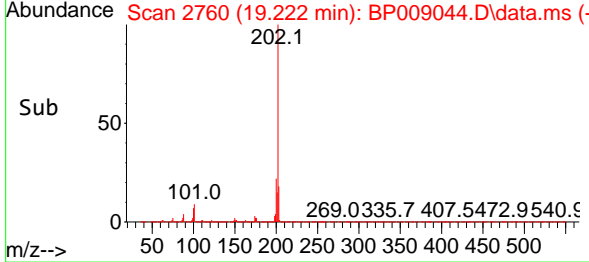
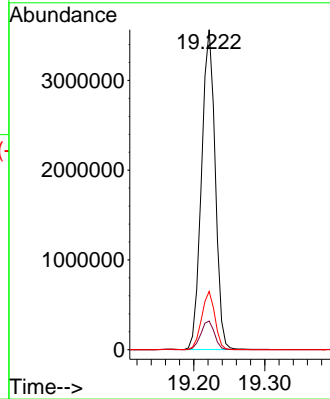
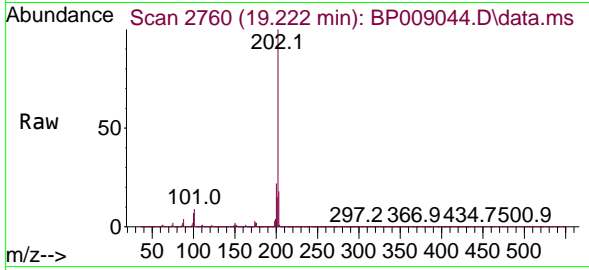


#75
 Fluoranthene
 Concen: 59.095 ng
 RT: 19.222 min Scan# 21
 Delta R.T. -0.000 min
 Lab File: BP009044.D
 Acq: 07 Feb 2022 13:26

Instrument :
 BNA_P
 ClientSampleId :
 SSTDICC060

Tgt Ion:202 Resp: 4792685

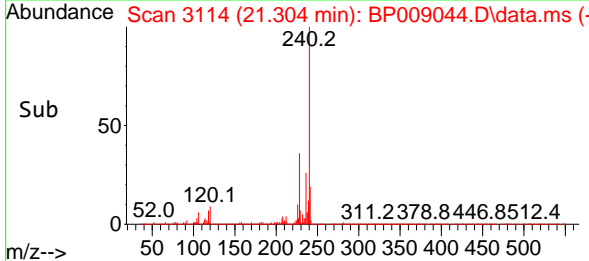
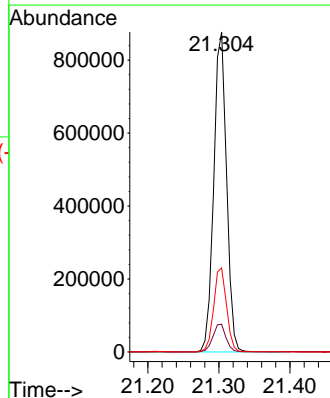
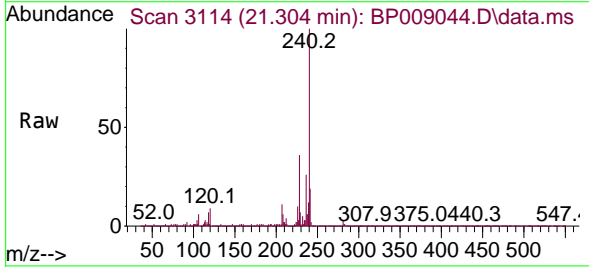
Ion	Ratio	Lower	Upper
202	100		
101	8.9	0.0	30.7
203	18.2	0.0	38.9

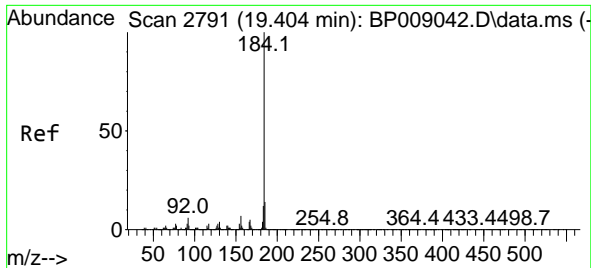


#76
 Chrysene-d12
 Concen: 20.000 ng
 RT: 21.304 min Scan# 3114
 Delta R.T. 0.006 min
 Lab File: BP009044.D
 Acq: 07 Feb 2022 13:26

Tgt Ion:240 Resp: 1096848

Ion	Ratio	Lower	Upper
240	100		
120	8.6	7.7	11.5
236	26.3	21.2	31.8



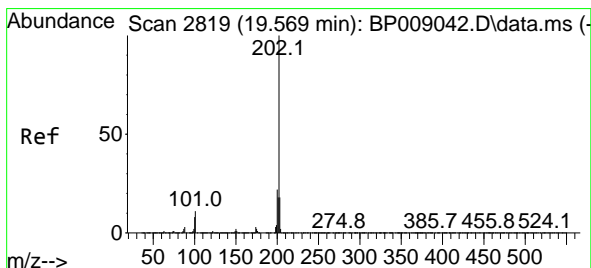
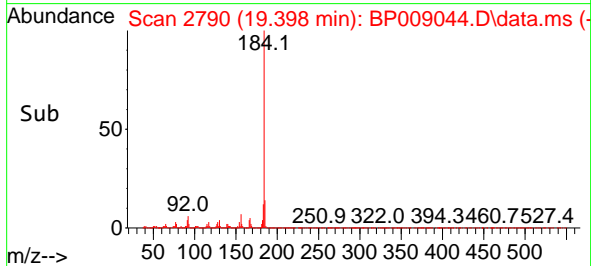
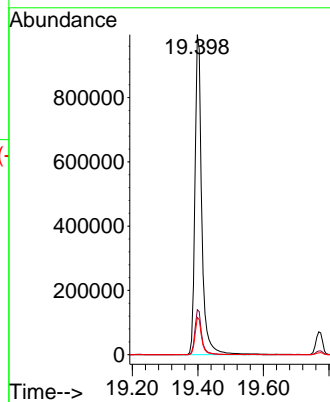
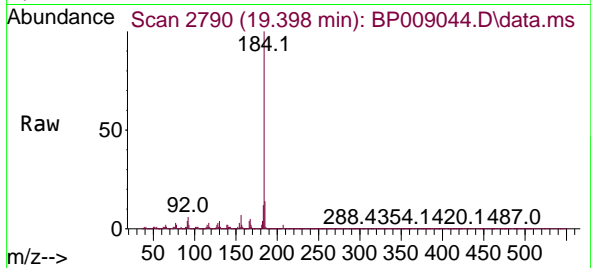


#77
 Benzidine
 Concen: 60.521 ng
 RT: 19.398 min Scan# 21
 Delta R.T. -0.006 min
 Lab File: BP009044.D
 Acq: 07 Feb 2022 13:26

Instrument :
 BNA_P
 ClientSampleId :
 SSTDICC060

Tgt Ion:184 Resp: 1436510

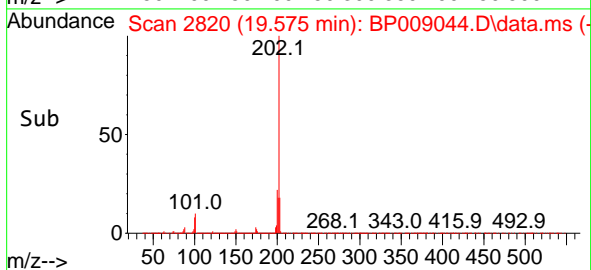
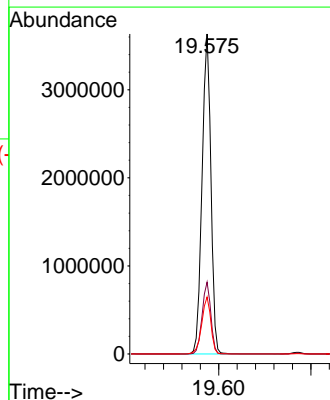
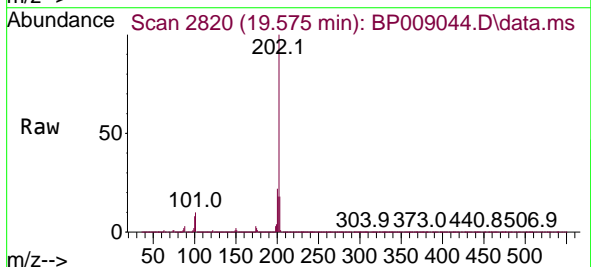
Ion	Ratio	Lower	Upper
184	100		
185	14.1	12.2	18.2
183	11.6	9.5	14.3

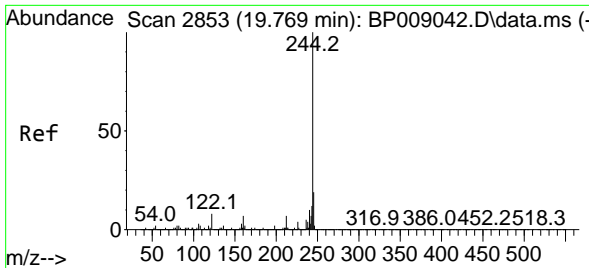


#78
 Pyrene
 Concen: 63.377 ng
 RT: 19.575 min Scan# 2820
 Delta R.T. 0.006 min
 Lab File: BP009044.D
 Acq: 07 Feb 2022 13:26

Tgt Ion:202 Resp: 4855216

Ion	Ratio	Lower	Upper
202	100		
200	22.5	18.0	27.0
203	17.8	15.0	22.6





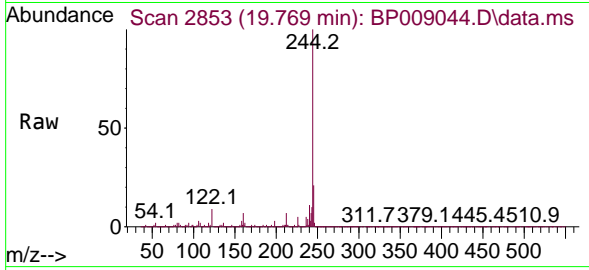
#79
 Terphenyl-d14
 Concen: 118.518 ng
 RT: 19.769 min Scan# 2853
 Delta R.T. 0.000 min
 Lab File: BP009044.D
 Acq: 07 Feb 2022 13:26

Instrument :

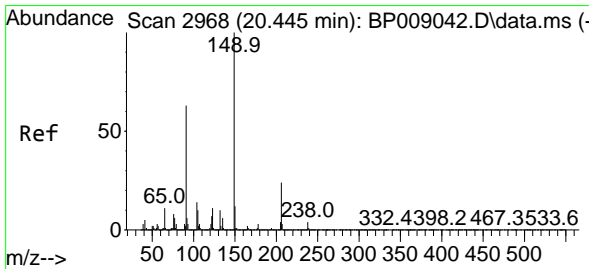
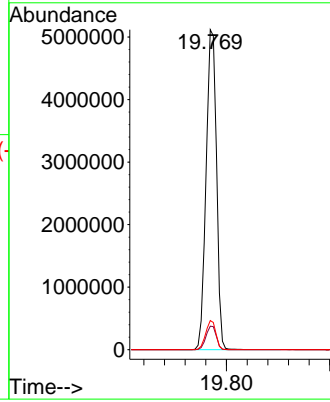
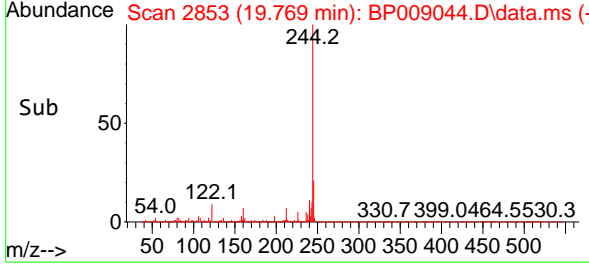
BNA_P

ClientSampleId :

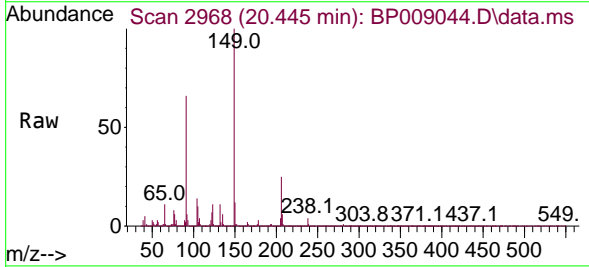
SSTDICC060



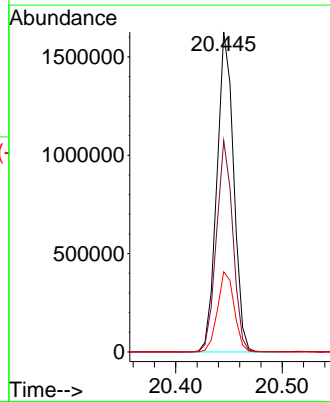
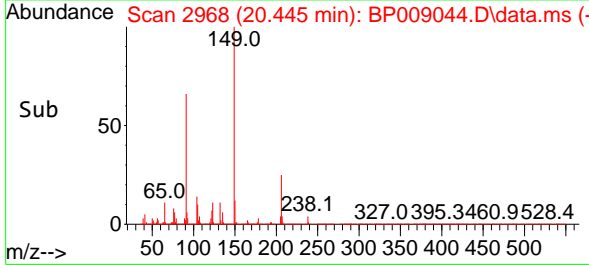
Tgt Ion:244 Resp: 7146675
 Ion Ratio Lower Upper
 244 100
 212 7.3 6.5 9.7
 122 9.1 9.2 13.8#

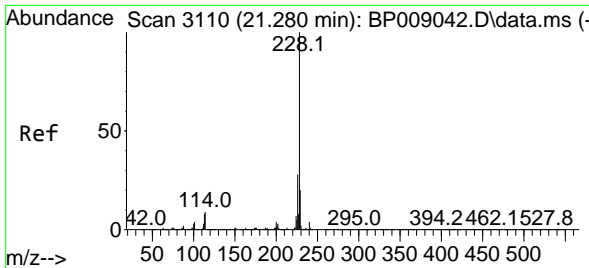


#80
 Butylbenzylphthalate
 Concen: 65.983 ng
 RT: 20.445 min Scan# 2968
 Delta R.T. 0.000 min
 Lab File: BP009044.D
 Acq: 07 Feb 2022 13:26



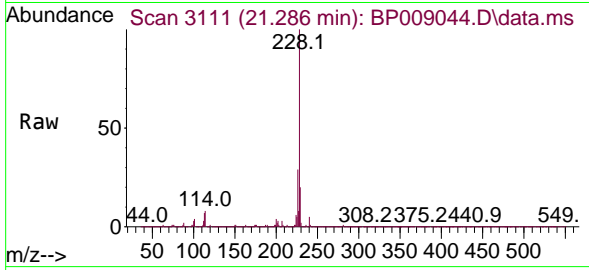
Tgt Ion:149 Resp: 1775638
 Ion Ratio Lower Upper
 149 100
 91 66.0 50.6 76.0
 206 25.0 19.7 29.5





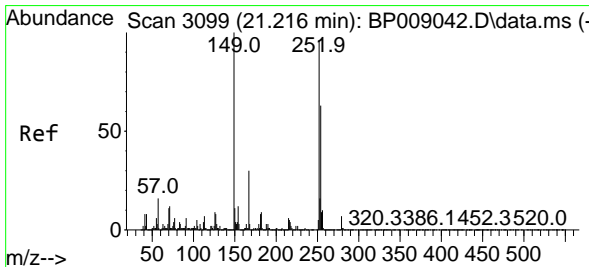
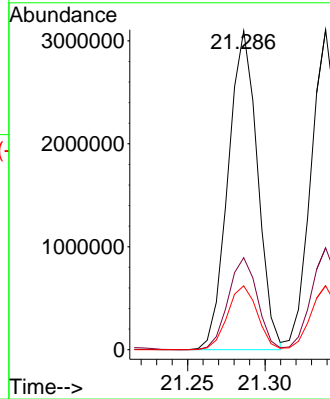
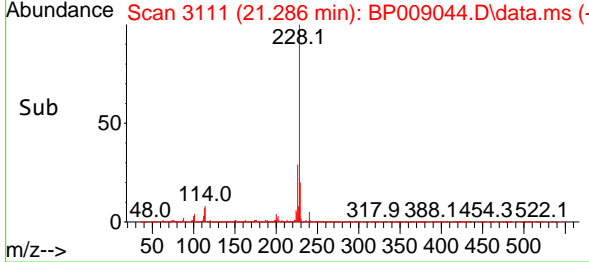
#81
 Benzo(a)anthracene
 Concen: 57.212 ng
 RT: 21.286 min Scan# 3111
 Delta R.T. 0.006 min
 Lab File: BP009044.D
 Acq: 07 Feb 2022 13:26

Instrument :
 BNA_P
 ClientSampleId :
 SSTDICC060

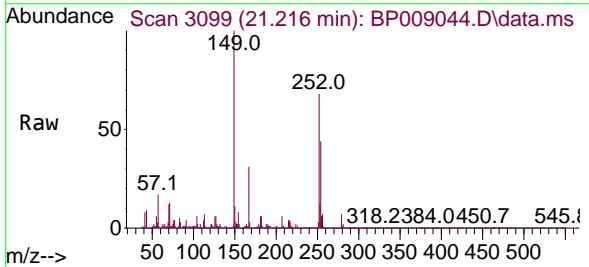


Tgt Ion:228 Resp: 4082516

Ion	Ratio	Lower	Upper
228	100		
226	28.8	23.3	34.9
229	20.0	17.0	25.6

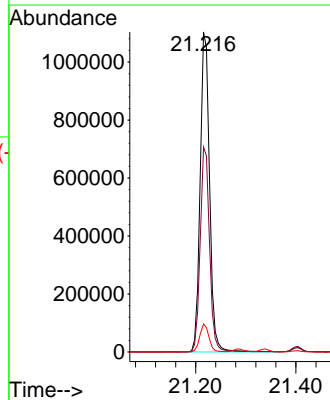
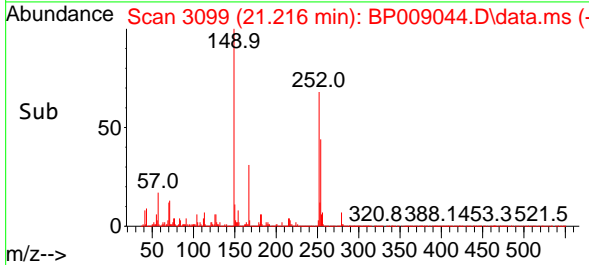


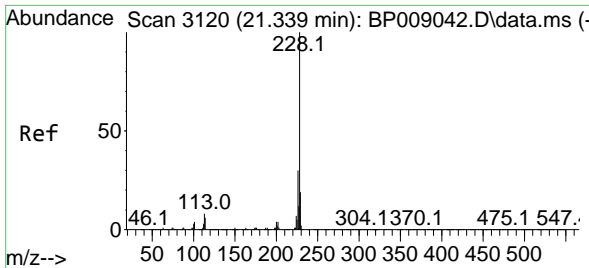
#82
 3,3'-Dichlorobenzidine
 Concen: 54.797 ng
 RT: 21.216 min Scan# 3099
 Delta R.T. 0.000 min
 Lab File: BP009044.D
 Acq: 07 Feb 2022 13:26



Tgt Ion:252 Resp: 1429102

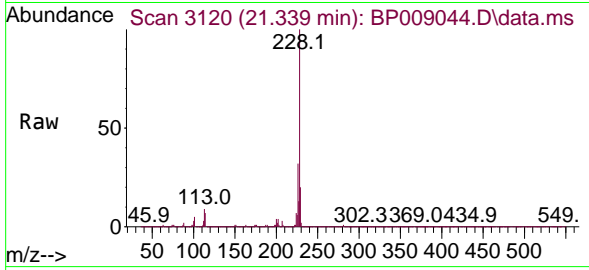
Ion	Ratio	Lower	Upper
252	100		
254	64.0	52.4	78.6
126	8.8	7.3	10.9





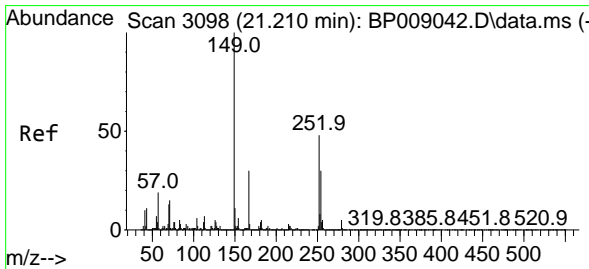
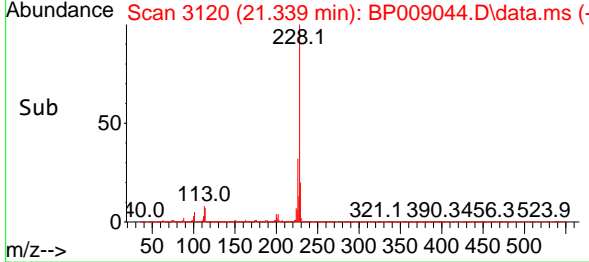
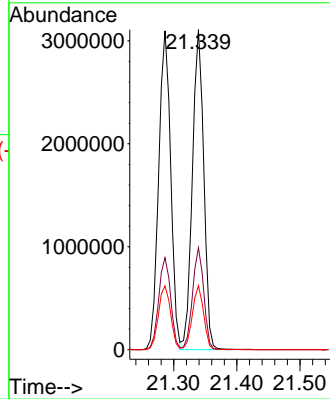
#83
 Chrysene
 Concen: 56.770 ng
 RT: 21.339 min Scan# 311
 Delta R.T. -0.000 min
 Lab File: BP009044.D
 Acq: 07 Feb 2022 13:26

Instrument :
 BNA_P
 ClientSampleId :
 SSTDICC060



Tgt Ion:228 Resp: 3900020

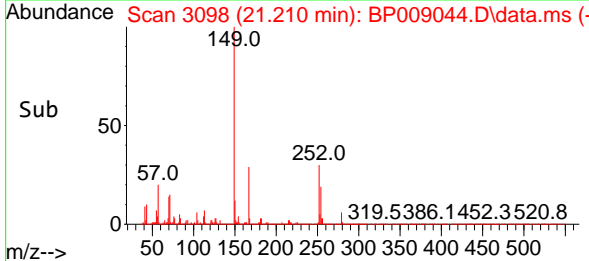
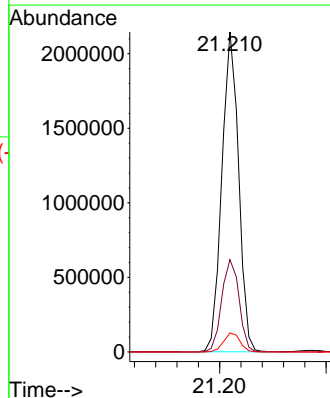
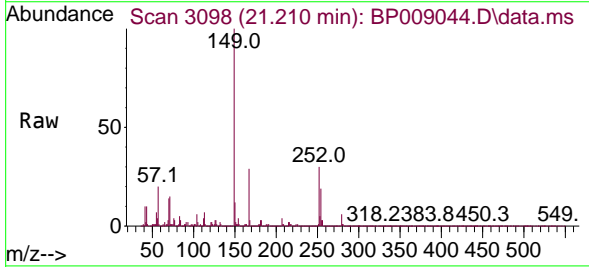
Ion	Ratio	Lower	Upper
228	100		
226	31.9	26.0	39.0
229	20.0	16.9	25.3

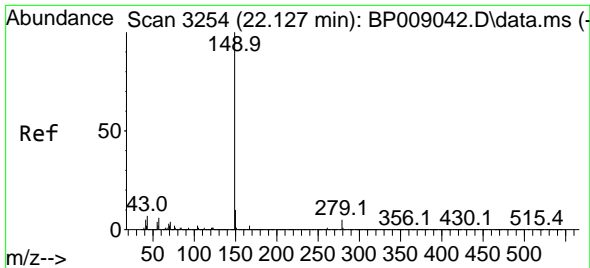


#84
 Bis(2-ethylhexyl)phthalate
 Concen: 64.956 ng
 RT: 21.210 min Scan# 3098
 Delta R.T. 0.000 min
 Lab File: BP009044.D
 Acq: 07 Feb 2022 13:26

Tgt Ion:149 Resp: 2330518

Ion	Ratio	Lower	Upper
149	100		
167	28.9	25.0	37.4
279	6.0	4.8	7.2



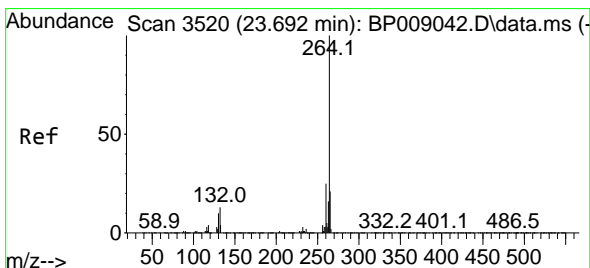
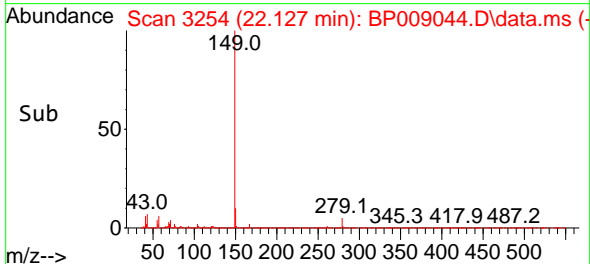
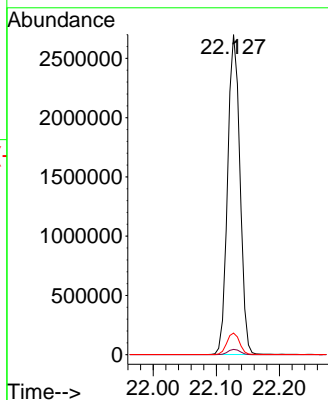
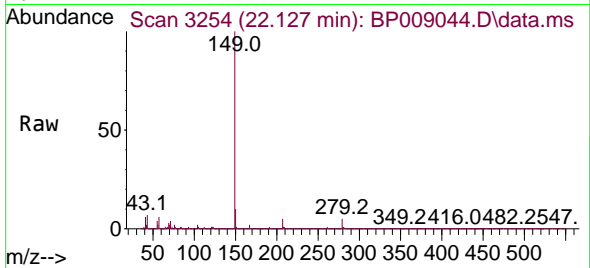


#85
 Di-n-octyl phthalate
 Concen: 61.035 ng
 RT: 22.127 min Scan# 31
 Delta R.T. 0.000 min
 Lab File: BP009044.D
 Acq: 07 Feb 2022 13:26

Instrument :
 BNA_P
 ClientSampleId :
 SSTDICC060

Tgt Ion:149 Resp: 3644151

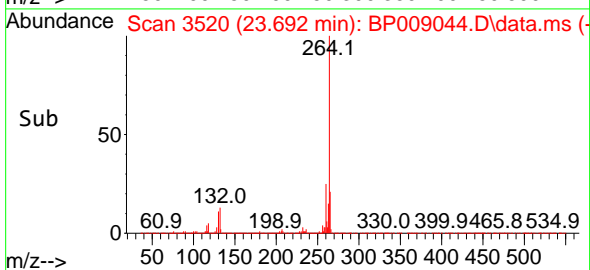
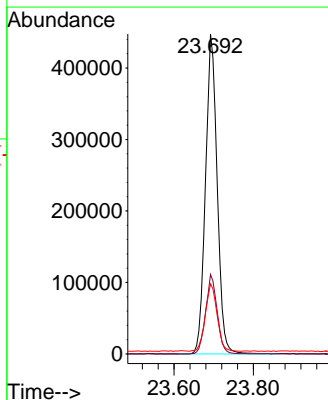
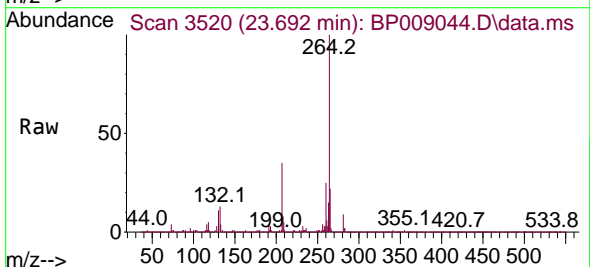
Ion	Ratio	Lower	Upper
149	100		
167	1.7	1.4	2.0
43	6.9	5.4	8.2

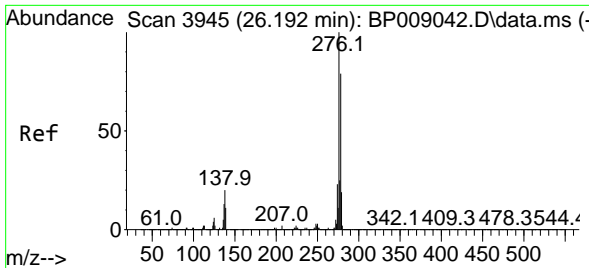


#86
 Perylene-d12
 Concen: 20.000 ng
 RT: 23.692 min Scan# 3520
 Delta R.T. -0.000 min
 Lab File: BP009044.D
 Acq: 07 Feb 2022 13:26

Tgt Ion:264 Resp: 916859

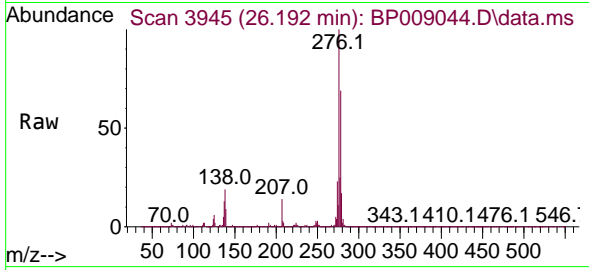
Ion	Ratio	Lower	Upper
264	100		
260	24.8	19.1	28.7
265	21.9	17.1	25.7



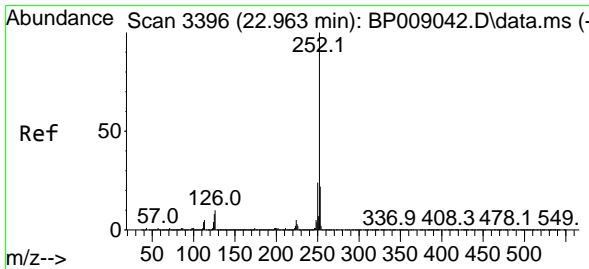
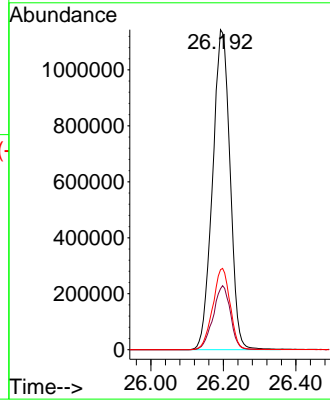
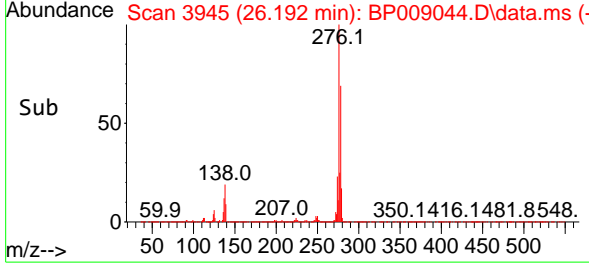


#87
 Indeno(1,2,3-cd)pyrene
 Concen: 55.640 ng
 RT: 26.192 min Scan# 3397
 Delta R.T. 0.000 min
 Lab File: BP009044.D
 Acq: 07 Feb 2022 13:26

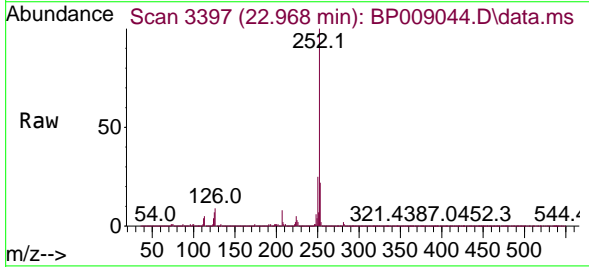
Instrument :
 BNA_P
 Client Sample Id :
 SSTDICC060



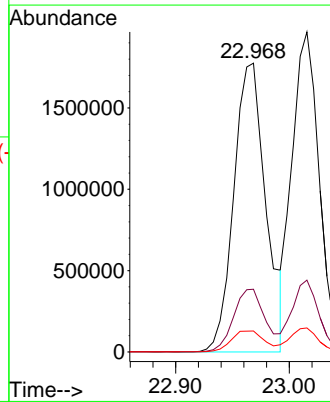
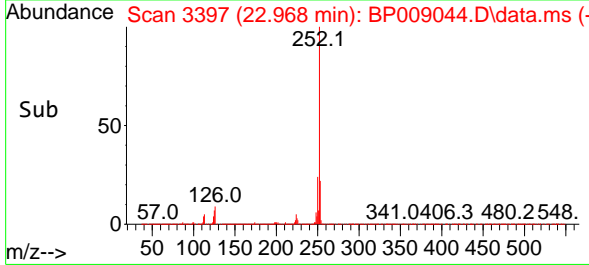
Tgt Ion: 276 Resp: 3820438
 Ion Ratio Lower Upper
 276 100
 138 19.8 17.8 26.6
 277 25.3 20.4 30.6

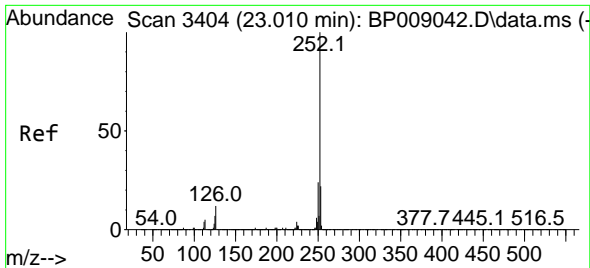


#88
 Benzo(b)fluoranthene
 Concen: 63.019 ng
 RT: 22.968 min Scan# 3397
 Delta R.T. 0.006 min
 Lab File: BP009044.D
 Acq: 07 Feb 2022 13:26



Tgt Ion: 252 Resp: 3475267
 Ion Ratio Lower Upper
 252 100
 253 21.7 18.0 27.0
 125 7.2 6.9 10.3



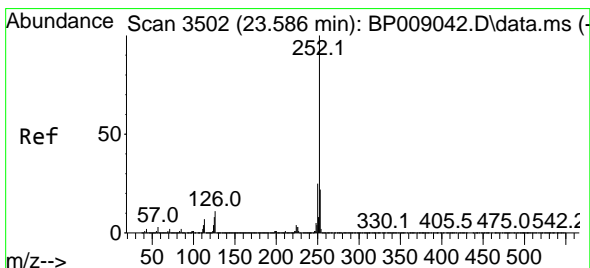
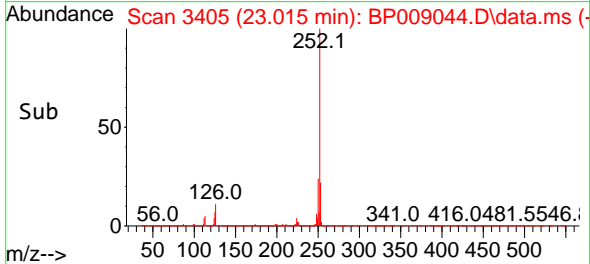
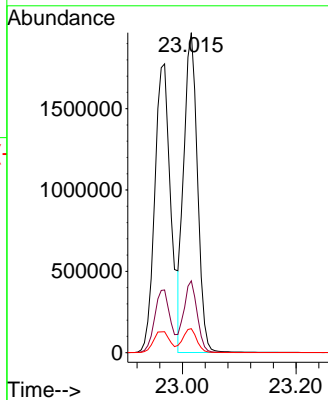
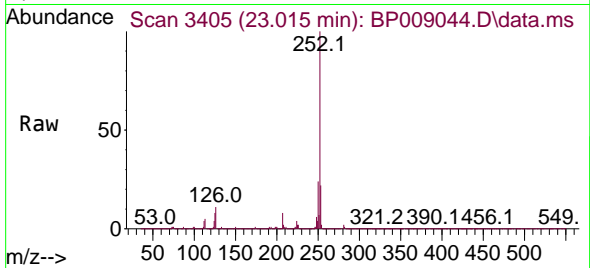


#89
 Benzo(k)fluoranthene
 Concen: 58.192 ng
 RT: 23.015 min Scan# 3404
 Delta R.T. 0.006 min
 Lab File: BP009044.D
 Acq: 07 Feb 2022 13:26

Instrument : BNA_P
 ClientSampleId : SSTDICC060

Tgt Ion:252 Resp: 3271159

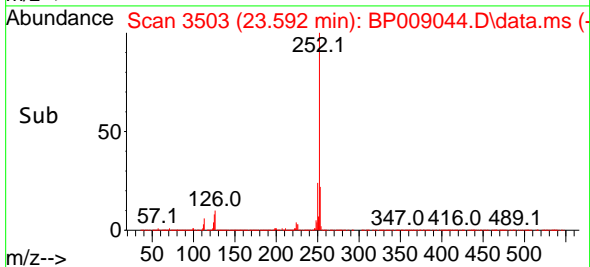
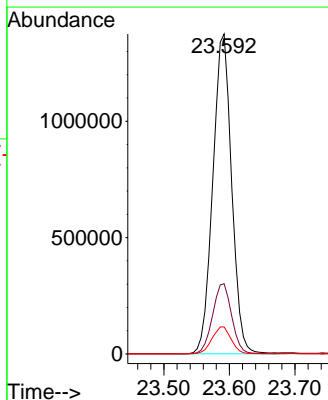
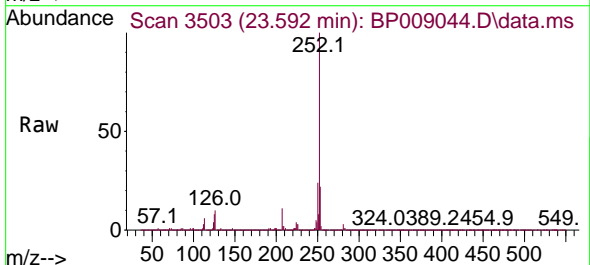
Ion	Ratio	Lower	Upper
252	100		
253	22.5	18.2	27.2
125	7.5	7.3	10.9

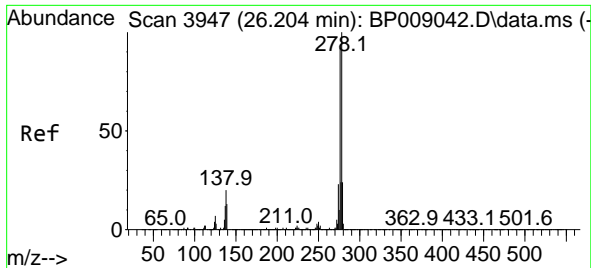


#90
 Benzo(a)pyrene
 Concen: 57.635 ng
 RT: 23.592 min Scan# 3503
 Delta R.T. 0.006 min
 Lab File: BP009044.D
 Acq: 07 Feb 2022 13:26

Tgt Ion:252 Resp: 2729736

Ion	Ratio	Lower	Upper
252	100		
253	21.9	17.8	26.8
125	8.4	7.8	11.6



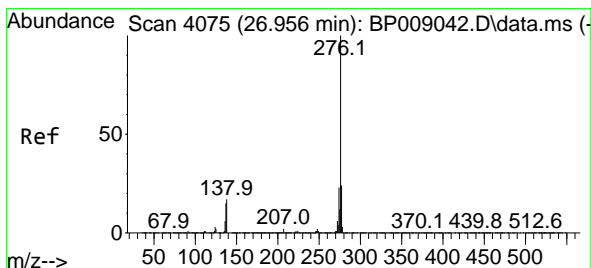
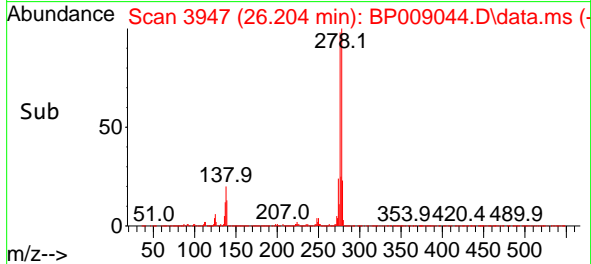
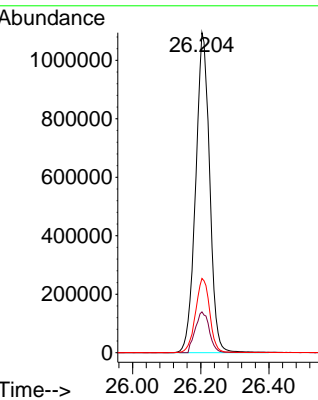
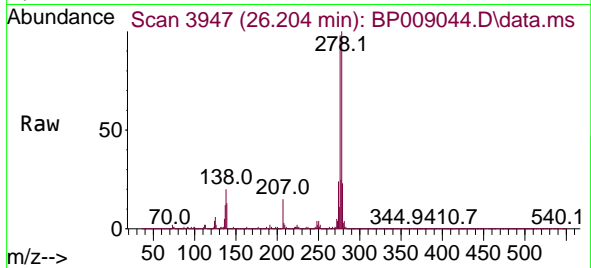


#91
 Dibenzo(a,h)anthracene
 Concen: 55.361 ng
 RT: 26.204 min Scan# 3947
 Delta R.T. -0.000 min
 Lab File: BP009044.D
 Acq: 07 Feb 2022 13:26

Instrument : BNA_P
 ClientSampleId : SSTDICC060

Tgt Ion: 278 Resp: 3126974

Ion	Ratio	Lower	Upper
278	100		
139	12.8	11.5	17.3
279	23.2	19.1	28.7



#92
 Benzo(g,h,i)perylene
 Concen: 55.002 ng
 RT: 26.956 min Scan# 4075
 Delta R.T. -0.000 min
 Lab File: BP009044.D
 Acq: 07 Feb 2022 13:26

Tgt Ion: 276 Resp: 3105315

Ion	Ratio	Lower	Upper
276	100		
277	25.0	19.2	28.8
138	17.8	15.0	22.4

