

Data Path : Z:\SVOASRV\HPCHEM1\BNA\_P\DATA\BP022120\  
 Data File : BP001848.D  
 Acq On : 22 Feb 2020 05:44  
 Operator : CG/JU  
 Sample : L1506-21  
 Misc :  
 ALS Vial : 28 Sample Multiplier: 1

Instrument :  
 BNA\_P  
 ClientSampleId :  
 DBCZ9

Integration Parameters: LSCINT.P

Integrator: RTE  
 Smoothing : OFF  
 Sampling : 1  
 Start Thrs: 0.2  
 Stop Thrs : 0

Filtering: 5  
 Min Area: 0.1 % of largest Peak  
 Max Peaks: 100  
 Peak Location: TOP

If leading or trailing edge < 100 prefer < Baseline drop else tangent >  
 Peak separation: 5

Method : Z:\SVOASRV\HPCHEM1\BNA\_P\METHODS\SOM-EPA-BP021820MA.M  
 Title : SVOA CALIBRATION

Signal : TIC

peak #	R.T. min	first scan	max scan	last scan	PK TY	peak height	corr. area	corr. % max.	% of total
1	2.922	3	6	26	rVB	631239	981893	6.80%	0.648%
2	3.175	44	49	57	rBV	83876	128820	0.89%	0.085%
3	3.452	94	96	103	rVB	10075	15545	0.11%	0.010%
4	3.816	154	158	165	rVB5	8022	16131	0.11%	0.011%
5	3.905	169	173	179	rVB2	12107	19303	0.13%	0.013%
6	4.393	251	256	262	rBV2	8590	16279	0.11%	0.011%
7	4.799	320	325	333	rBV2	25617	42281	0.29%	0.028%
8	6.834	663	671	686	rBV	1679389	2789082	19.33%	1.839%
9	6.993	691	698	713	rVB	1409852	2183700	15.13%	1.440%
10	7.187	724	731	742	rBV	1857892	2950864	20.45%	1.946%
11	7.652	802	810	819	rBV	1318926	2038004	14.12%	1.344%
12	7.734	819	824	829	rVB	17175	26691	0.18%	0.018%
13	8.357	923	930	942	rBV	2337670	3706871	25.69%	2.445%
14	8.793	996	1004	1016	rBV	1707141	2826914	19.59%	1.864%
15	9.287	1078	1088	1097	rVB	56517	86393	0.60%	0.057%
16	9.516	1119	1127	1135	rBV	1465014	2419979	16.77%	1.596%
17	10.051	1209	1218	1233	rBV	2449801	4064478	28.17%	2.680%
18	10.428	1273	1282	1296	rBV	1812124	3058929	21.20%	2.017%
19	10.557	1296	1304	1319	rBV	2377082	4046264	28.04%	2.668%
20	12.022	1545	1553	1560	rVB	43836	73347	0.51%	0.048%
21	12.234	1580	1589	1600	rBV	39943	102752	0.71%	0.068%
22	13.122	1734	1740	1748	rVB2	14546	31046	0.22%	0.020%
23	13.210	1749	1755	1759	rBV3	32102	51739	0.36%	0.034%
24	13.610	1814	1823	1831	rBV3	22552	51117	0.35%	0.034%
25	13.704	1832	1839	1844	rVV	4479509	6273886	43.48%	4.137%
26	13.751	1844	1847	1854	rVB	565300	698016	4.84%	0.460%
27	13.981	1877	1886	1897	rBV	5249343	7838628	54.32%	5.169%
28	14.292	1931	1939	1945	rBV	2910151	4393265	30.45%	2.897%
29	14.351	1945	1949	1959	rVB	115519	170998	1.19%	0.113%
30	14.486	1962	1972	1985	rBV	2037285	3016465	20.90%	1.989%
31	14.604	1989	1992	1997	rVB2	10583	15673	0.11%	0.010%
32	14.692	1998	2007	2020	rBV	110744	267026	1.85%	0.176%
33	15.128	2077	2081	2085	rVB3	11636	16029	0.11%	0.011%
34	15.181	2085	2090	2096	rVB2	10396	16364	0.11%	0.011%

Data Path : Z:\SVOASRV\HPCHEM1\BNA P\DATA\BP022120\  
 Data File : BP001848.D  
 Acq On : 22 Feb 2020 05:44  
 Operator : CG/JU  
 Sample : L1506-21  
 Misc :  
 ALS Vial : 28 Sample Multiplier: 1

Instrument :  
 BNA\_P  
 ClientSampleId :  
 DBCZ9

## Integration Parameters: LSCINT.P

Integrator: RTE  
 Smoothing : OFF  
 Sampling : 1  
 Start Thrs: 0.2  
 Stop Thrs : 0

Filtering: 5  
 Min Area: 0.1 % of largest Peak  
 Max Peaks: 100  
 Peak Location: TOP

If leading or trailing edge < 100 prefer < Baseline drop else tangent >  
 Peak separation: 5

Method : Z:\SVOASRV\HPCHEM1\BNA\_P\METHODS\SOM-EPA-BP021820MA.M  
 Title : SVOA CALIBRATION

35	15.286	2101	2108	2114	rVV	6410193	9813056	68.00%	6.471%
36	15.339	2114	2117	2122	rVV	163990	230756	1.60%	0.152%
37	15.404	2122	2128	2142	rVV	1903884	2611393	18.10%	1.722%
38	15.528	2142	2149	2156	rVV	89727	175481	1.22%	0.116%
39	15.592	2158	2160	2164	rVV4	12851	18640	0.13%	0.012%
40	15.639	2164	2168	2180	rVB	29735	58106	0.40%	0.038%
41	15.786	2188	2193	2201	rBV	31567	59618	0.41%	0.039%
42	15.857	2201	2205	2207	rBV4	10310	15388	0.11%	0.010%
43	16.010	2225	2231	2235	rVB8	8801	19758	0.14%	0.013%
44	16.075	2239	2242	2249	rVB2	29857	44170	0.31%	0.029%
45	16.316	2278	2283	2286	rBV5	9441	18209	0.13%	0.012%
46	16.351	2286	2289	2293	rVB5	10884	15567	0.11%	0.010%
47	16.480	2304	2311	2312	rBV6	9892	15759	0.11%	0.010%
48	16.722	2344	2352	2358	rVB5	17407	36645	0.25%	0.024%
49	16.828	2365	2370	2372	rVV	20259	39310	0.27%	0.026%
50	16.857	2372	2375	2382	rVB	36246	53570	0.37%	0.035%
51	17.039	2397	2406	2411	rBV	3839954	5535261	38.36%	3.650%
52	17.080	2411	2413	2417	rVV	124606	152300	1.06%	0.100%
53	17.139	2417	2423	2434	rVV2	7372192	10510969	72.84%	6.932%
54	17.245	2437	2441	2445	rVB6	17652	26980	0.19%	0.018%
55	17.839	2538	2542	2546	rBV6	15210	24932	0.17%	0.016%
56	17.916	2551	2555	2558	rBV	31822	40994	0.28%	0.027%
57	17.969	2558	2564	2582	rBV	1267761	2066308	14.32%	1.363%
58	18.104	2583	2587	2591	rVB	54453	83715	0.58%	0.055%
59	18.251	2608	2612	2619	rVB	55076	77655	0.54%	0.051%
60	18.798	2701	2705	2714	rVB4	41738	62116	0.43%	0.041%
61	19.027	2740	2744	2747	rBV	98456	145701	1.01%	0.096%
62	19.057	2747	2749	2758	rVB	160392	221820	1.54%	0.146%
63	19.204	2770	2774	2782	rBV	463548	691768	4.79%	0.456%
64	19.274	2782	2786	2794	rVV	122090	214278	1.48%	0.141%
65	19.386	2796	2805	2821	rVB	9548820	13214432	91.58%	8.714%
66	19.910	2891	2894	2898	rBV2	40424	53788	0.37%	0.035%
67	19.951	2898	2901	2906	rVB3	26138	32540	0.23%	0.021%
68	20.410	2976	2979	2980	rBV3	36832	38974	0.27%	0.026%
69	20.433	2980	2983	2987	rVB	92170	95504	0.66%	0.063%
70	20.874	3053	3058	3067	rBV	2111360	2695032	18.68%	1.777%
71	21.133	3096	3102	3112	rBV	5497878	6906781	47.86%	4.555%

Data Path : Z:\SVOASRV\HPCHEM1\BNA\_P\DATA\BP022120\  
 Data File : BP001848.D  
 Acq On : 22 Feb 2020 05:44  
 Operator : CG/JU  
 Sample : L1506-21  
 Misc :  
 ALS Vial : 28 Sample Multiplier: 1

Instrument :  
 BNA\_P  
 ClientSampleId :  
 DBCZ9

## Integration Parameters: LSCINT.P

Integrator: RTE  
 Smoothing : OFF Filtering: 5  
 Sampling : 1 Min Area: 0.1 % of largest Peak  
 Start Thrs: 0.2 Max Peaks: 100  
 Stop Thrs : 0 Peak Location: TOP

If leading or trailing edge < 100 prefer < Baseline drop else tangent >  
 Peak separation: 5

Method : Z:\SVOASRV\HPCHEM1\BNA\_P\METHODS\SOM-EPA-BP021820MA.M  
 Title : SVOA CALIBRATION

72	21.251	3118	3122	3128	rBV	244632	353544	2.45%	0.233%
73	21.316	3129	3133	3140	rVB	836649	958607	6.64%	0.632%
74	21.745	3202	3206	3218	rVB	1532155	1956722	13.56%	1.290%
75	22.210	3280	3285	3296	rVB	2049871	2815675	19.51%	1.857%
76	22.333	3302	3306	3315	rVB	335481	479244	3.32%	0.316%
77	22.715	3366	3371	3385	rVB	2100889	3268980	22.65%	2.156%
78	23.210	3447	3455	3463	rBV	7618623	14430005	100.00%	9.516%
79	23.292	3463	3469	3473	rVV	1981815	3387032	23.47%	2.234%
80	23.351	3473	3479	3491	rVB	3780951	7125233	49.38%	4.699%
81	23.945	3573	3580	3586	rBV	1487615	2905919	20.14%	1.916%
82	24.015	3587	3592	3604	rVB	338336	675615	4.68%	0.446%
83	24.698	3701	3708	3716	rVB	844649	1874641	12.99%	1.236%
84	25.580	3851	3858	3868	rVB	329901	857121	5.94%	0.565%

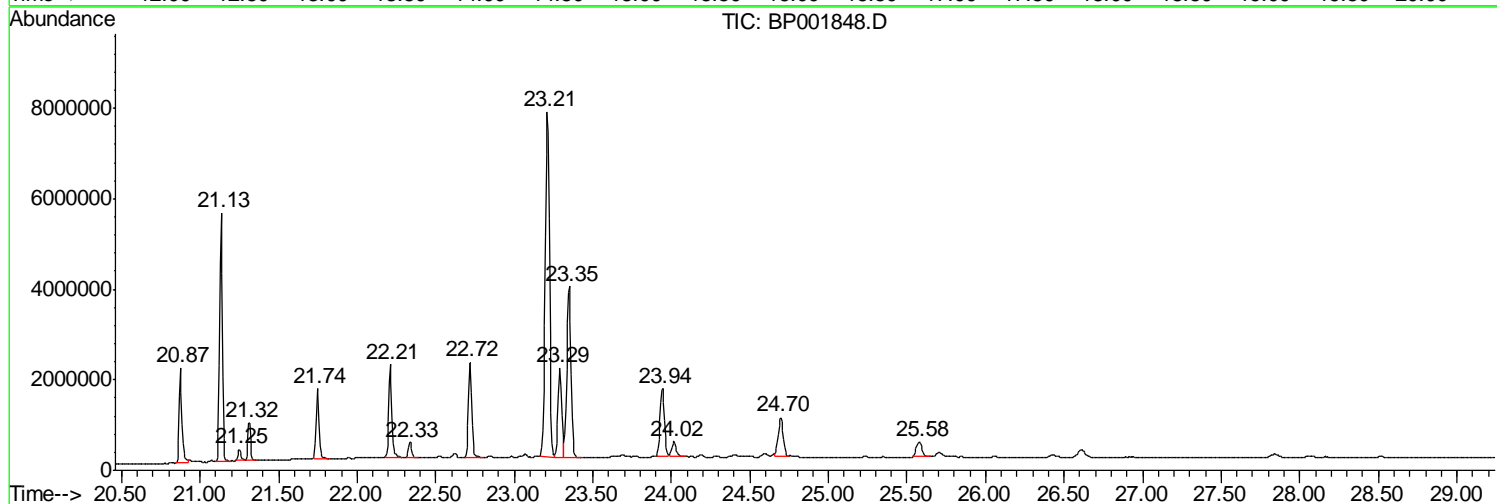
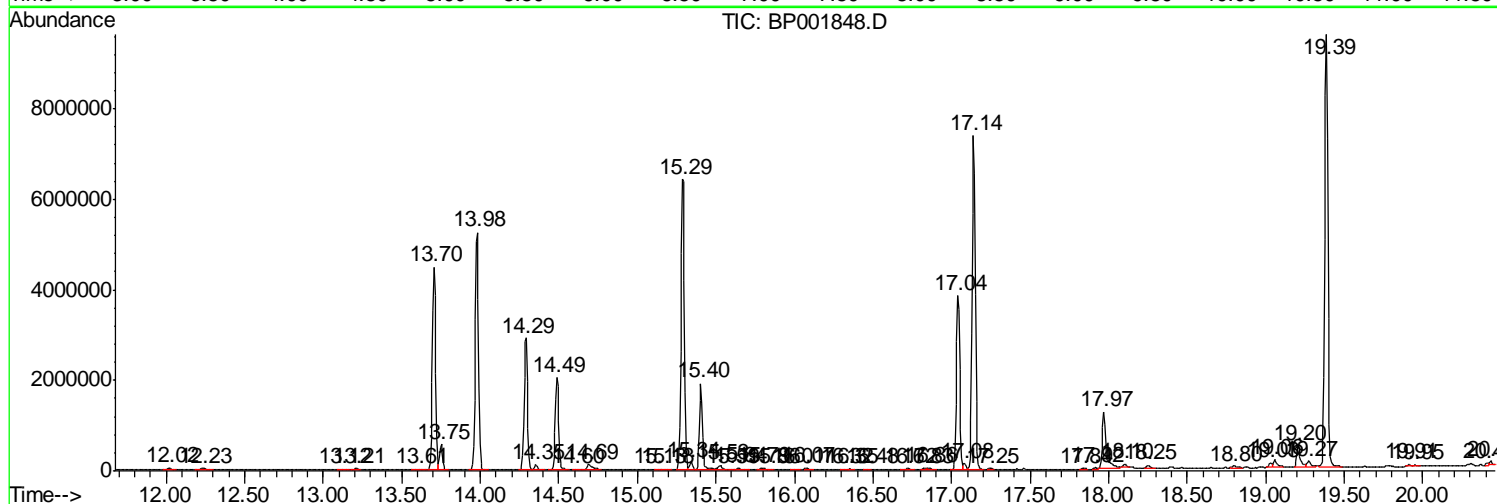
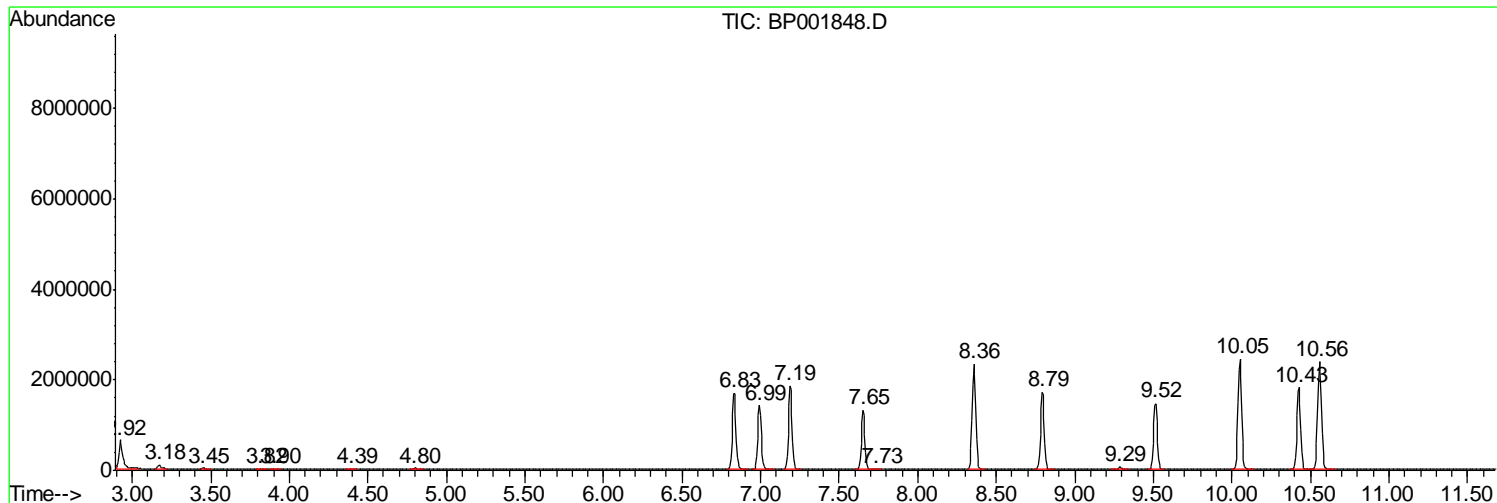
Sum of corrected areas: 151640384

Data Path : Z:\SVOASRV\HPCHEM1\BNA P\DATA\BP022120\  
 Data File : BP001848.D  
 Acq On : 22 Feb 2020 05:44  
 Operator : CG/JU  
 Sample : L1506-21  
 Misc :  
 ALS Vial : 28 Sample Multiplier: 1

Instrument :  
 BNA\_P  
 ClientSampleId :  
 DBCZ9

Quant Method : Z:\SVOASRV\HPCHEM1\BNA\_P\METHODS\SOM-EPA-BP021820MA.M  
 Quant Title : SVOA CALIBRATION

TIC Library : C:\DATABASE\NIST11.L  
 TIC Integration Parameters: LSCINT.P



Data Path : Z:\SVOASRV\HPCHEM1\BNA P\DATA\BP022120\  
 Data File : BP001848.D  
 Acq On : 22 Feb 2020 05:44  
 Operator : CG/JU  
 Sample : L1506-21  
 Misc :  
 ALS Vial : 28 Sample Multiplier: 1

Instrument :  
 BNA\_P  
 ClientSampleID :  
 DBCZ9

Quant Method : Z:\SVOASRV\HPCHEM1\BNA\_P\METHODS\SOM-EPA-BP021820MA.M  
 Quant Title : SVOA CALIBRATION

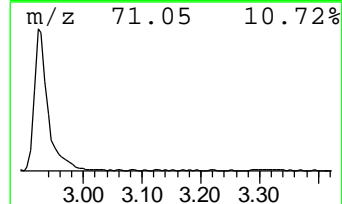
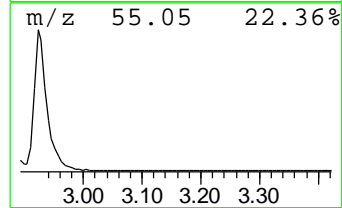
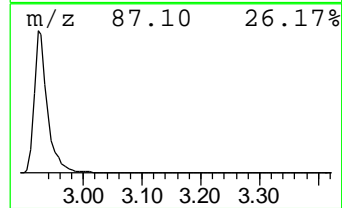
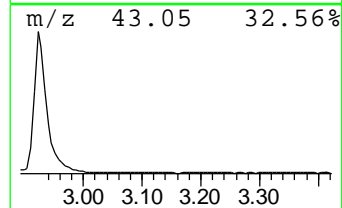
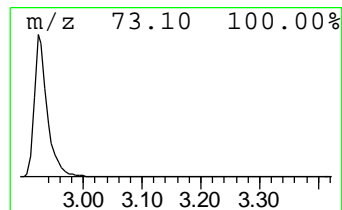
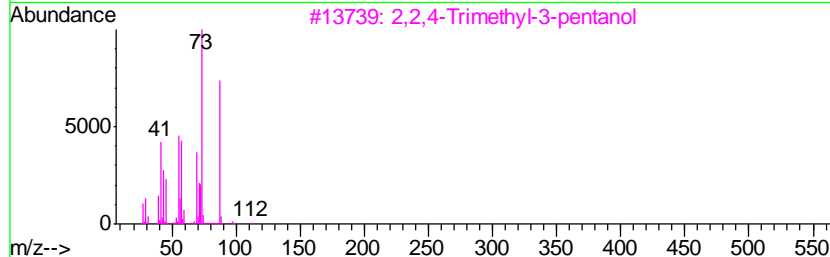
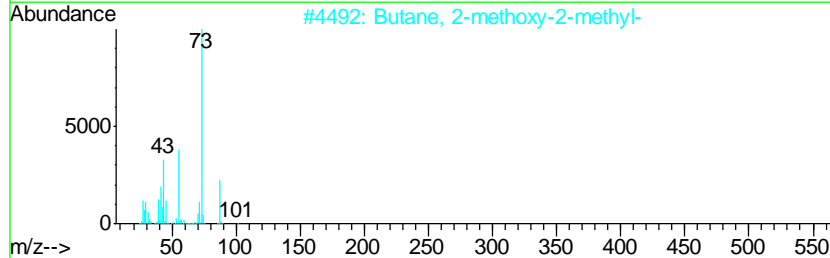
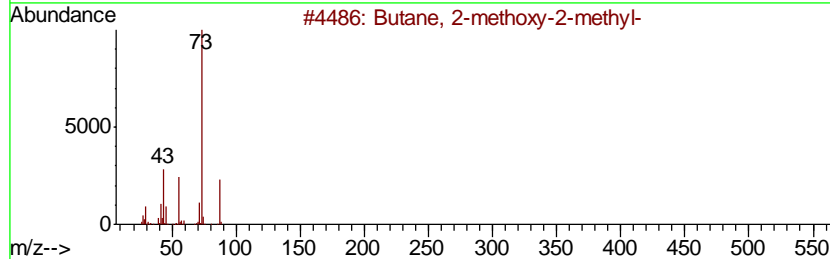
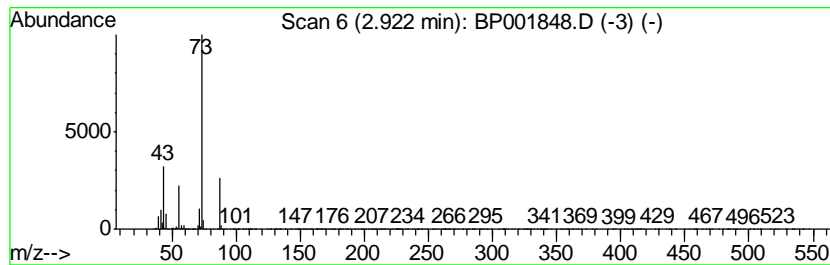
TIC Library : C:\DATABASE\NIST11.L  
 TIC Integration Parameters: LSCINT.P

\*\*\*\*\*  
 Peak Number 1 Butane, 2-methoxy-2-methyl- Concentration Rank 1

R.T.	EstConc	Area	Relative to ISTD	R.T.
2.92	9.64 ng/ul	981893	1,4-Dichlorobenzene-d4	7.65

Hit#	of	Tentative ID	MW	MolForm	CAS#	Qual
1	5	Butane, 2-methoxy-2-methyl-	102	C6H14O	000994-05-8	90
2		Butane, 2-methoxy-2-methyl-	102	C6H14O	000994-05-8	64
3		2,2,4-Trimethyl-3-pentanol	130	C8H18O	005162-48-1	43
4		Pentane, 3-methoxy-	102	C6H14O	036839-67-5	23
5		N-Ethylformamide	73	C3H7NO	000627-45-2	9



Data Path : Z:\SVOASRV\HPCHEM1\BNA P\DATA\BP022120\  
 Data File : BP001848.D  
 Acq On : 22 Feb 2020 05:44  
 Operator : CG/JU  
 Sample : L1506-21  
 Misc :  
 ALS Vial : 28 Sample Multiplier: 1

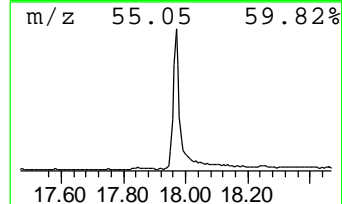
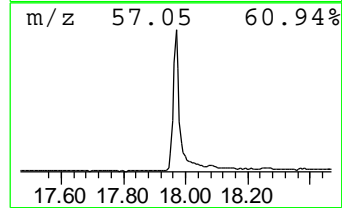
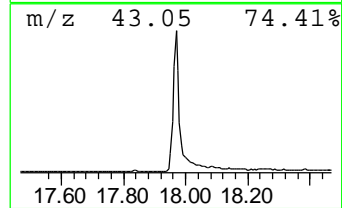
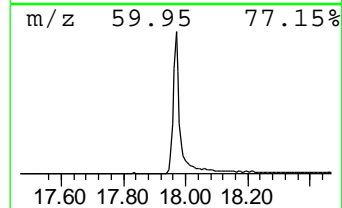
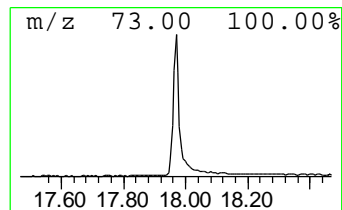
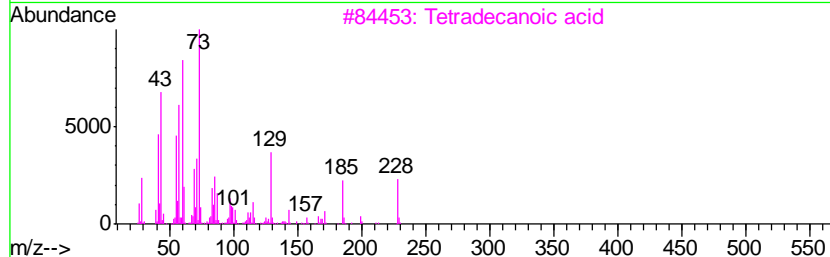
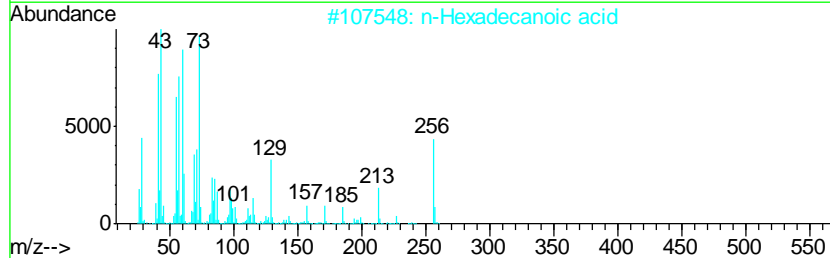
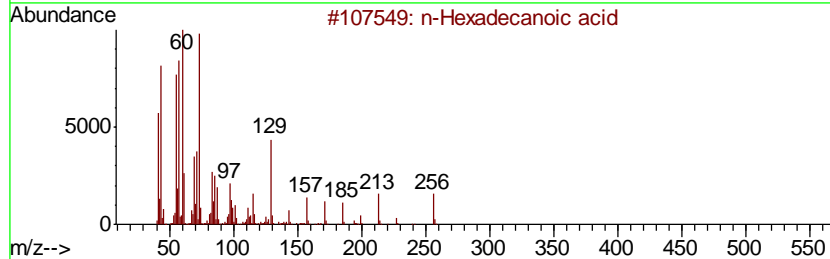
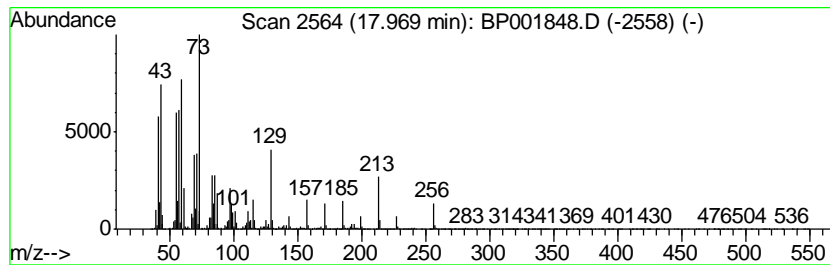
Instrument :  
 BNA\_P  
 ClientSampleId :  
 DBCZ9

Quant Method : Z:\SVOASRV\HPCHEM1\BNA\_P\METHODS\SOM-EPA-BP021820MA.M  
 Quant Title : SVOA CALIBRATION

TIC Library : C:\DATABASE\NIST11.L  
 TIC Integration Parameters: LSCINT.P

\*\*\*\*\*  
 Peak Number 2 n-Hexadecanoic acid Concentration Rank 7

R.T.	EstConc	Area	Relative to ISTD	R.T.		
17.97	7.47 ng/ul	2066310	Phenanthrene-d10	17.04		
Hit# of	5	Tentative ID	MW	MolForm	CAS#	Qual
1		n-Hexadecanoic acid	256	C16H32O2	000057-10-3	99
2		n-Hexadecanoic acid	256	C16H32O2	000057-10-3	98
3		Tetradecanoic acid	228	C14H28O2	000544-63-8	94
4		Tridecanoic acid	214	C13H26O2	000638-53-9	91
5		Tetradecanoic acid	228	C14H28O2	000544-63-8	90



Data Path : Z:\SVOASRV\HPCHEM1\BNA P\DATA\BP022120\  
 Data File : BP001848.D  
 Acq On : 22 Feb 2020 05:44  
 Operator : CG/JU  
 Sample : L1506-21  
 Misc :  
 ALS Vial : 28 Sample Multiplier: 1

Instrument :  
 BNA\_P  
 ClientSampleID :  
 DBCZ9

Quant Method : Z:\SVOASRV\HPCHEM1\BNA\_P\METHODS\SOM-EPA-BP021820MA.M  
 Quant Title : SVOA CALIBRATION

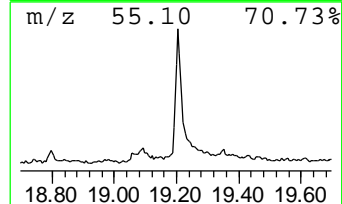
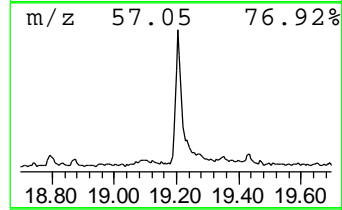
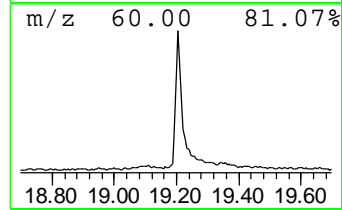
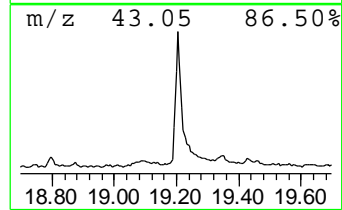
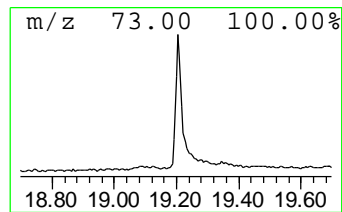
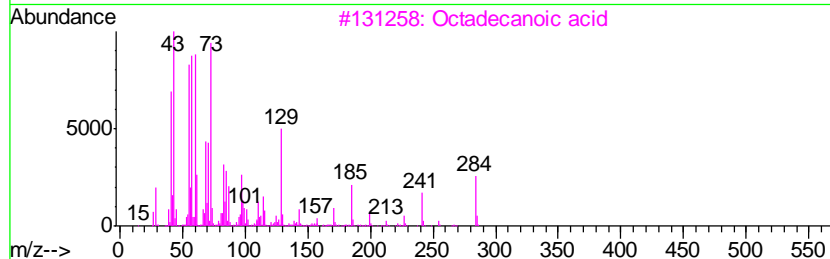
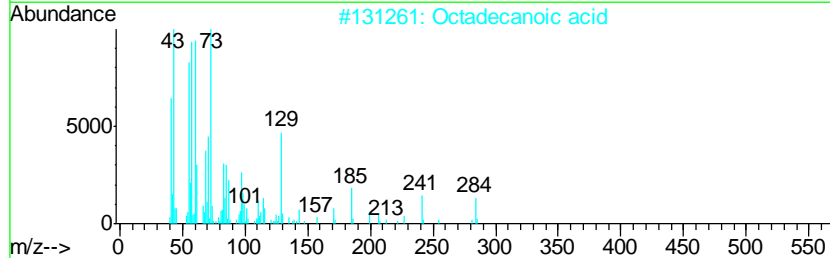
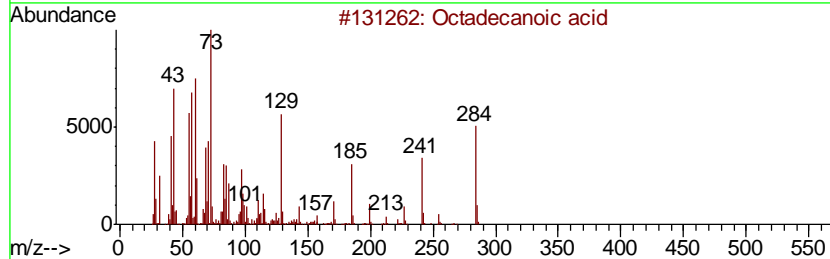
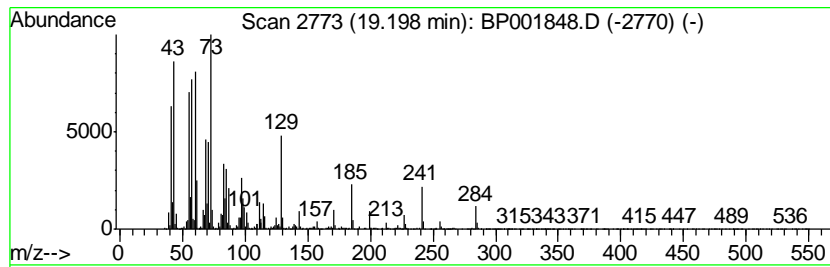
TIC Library : C:\DATABASE\NIST11.L  
 TIC Integration Parameters: LSCINT.P

\*\*\*\*\*  
 Peak Number 3 Octadecanoic acid Concentration Rank 12

R.T.	EstConc	Area	Relative to ISTD	R.T.
19.20	2.00 ng/ul	691768	Chrysene-d12	21.13

Hit#	of	Tentative ID	MW	MolForm	CAS#	Qual
1	5	Octadecanoic acid	284	C18H36O2	000057-11-4	99
2		Octadecanoic acid	284	C18H36O2	000057-11-4	99
3		Octadecanoic acid	284	C18H36O2	000057-11-4	99
4		Octadecanoic acid	284	C18H36O2	000057-11-4	98
5		Octadecanoic acid	284	C18H36O2	000057-11-4	94



Data Path : Z:\SVOASRV\HPCHEM1\BNA P\DATA\BP022120\  
 Data File : BP001848.D  
 Acq On : 22 Feb 2020 05:44  
 Operator : CG/JU  
 Sample : L1506-21  
 Misc :  
 ALS Vial : 28 Sample Multiplier: 1

Instrument :  
 BNA\_P  
 ClientSampleID :  
 DBCZ9

Quant Method : Z:\SVOASRV\HPCHEM1\BNA\_P\METHODS\SOM-EPA-BP021820MA.M  
 Quant Title : SVOA CALIBRATION

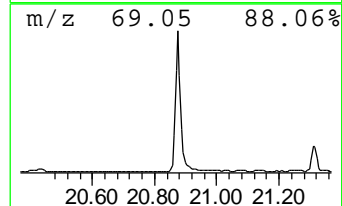
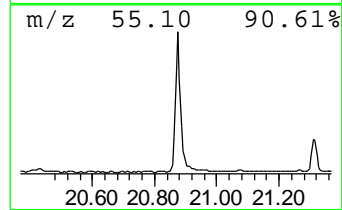
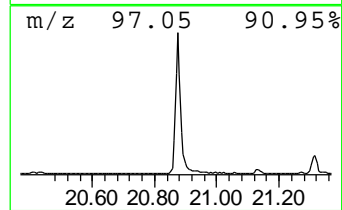
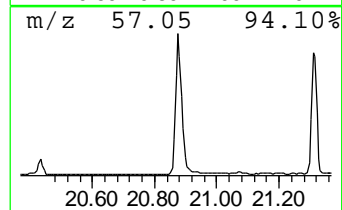
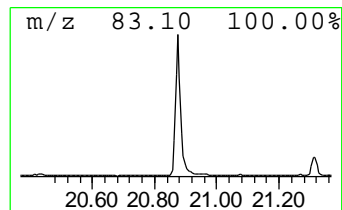
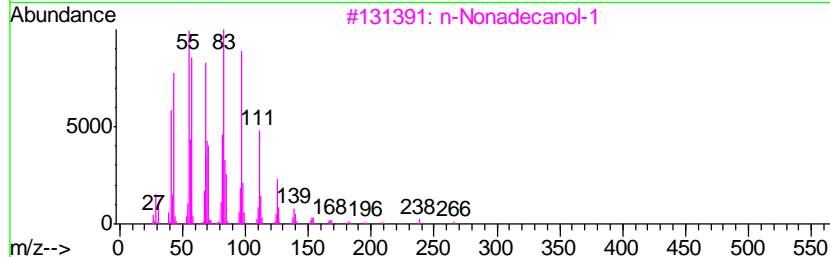
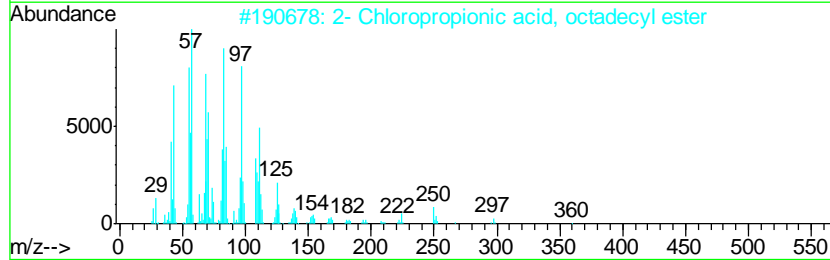
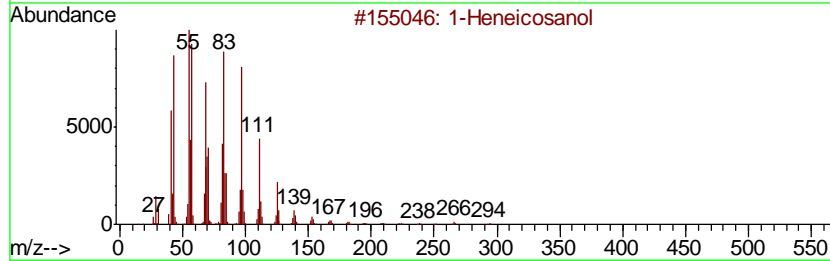
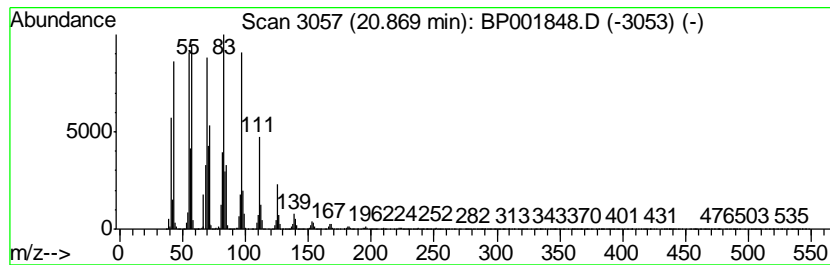
TIC Library : C:\DATABASE\NIST11.L  
 TIC Integration Parameters: LSCINT.P

\*\*\*\*\*  
 Peak Number 4 1-Heneicosanol Concentration Rank 6

R.T.	EstConc	Area	Relative to ISTD	R.T.
20.87	7.80 ng/ul	2695030	Chrysene-d12	21.13

Hit#	of	Tentative ID	MW	MolForm	CAS#	Qual
1	5	1-Heneicosanol	312	C21H44O	015594-90-8	95
2		2- Chloropropionic acid, octadec...	360	C21H41ClO2	088104-31-8	94
3		n-Nonadecanol-1	284	C19H40O	001454-84-8	94
4		1-Heptacosanol	396	C27H56O	002004-39-9	94
5		Behenic alcohol	326	C22H46O	000661-19-8	94





Data Path : Z:\SVOASRV\HPCHEM1\BNA P\DATA\BP022120\  
 Data File : BP001848.D  
 Acq On : 22 Feb 2020 05:44  
 Operator : CG/JU  
 Sample : L1506-21  
 Misc :  
 ALS Vial : 28 Sample Multiplier: 1

Instrument :  
 BNA\_P  
 ClientSampleId :  
 DBCZ9

Quant Method : Z:\SVOASRV\HPCHEM1\BNA\_P\METHODS\SOM-EPA-BP021820MA.M  
 Quant Title : SVOA CALIBRATION

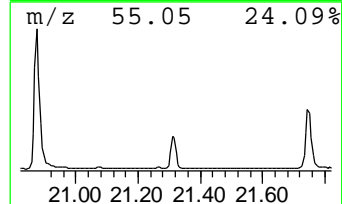
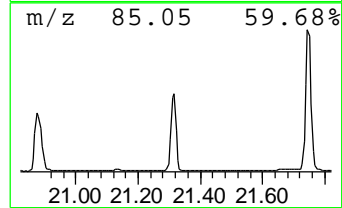
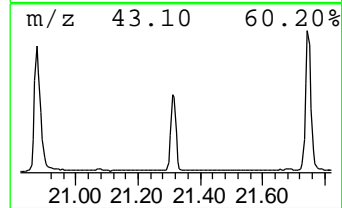
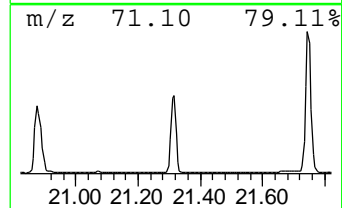
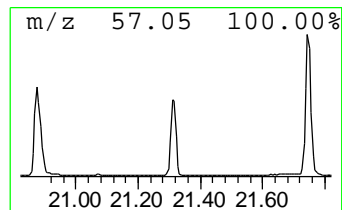
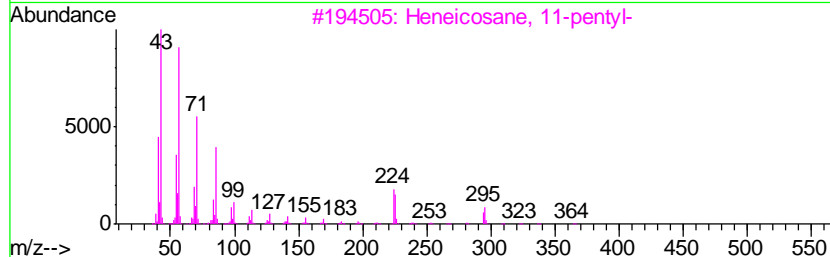
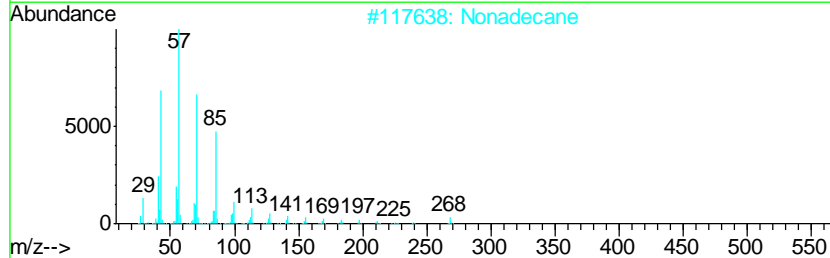
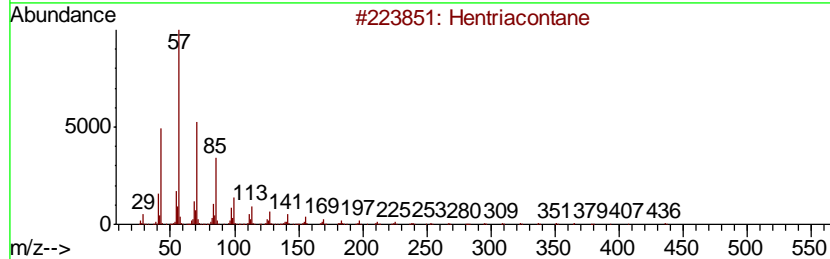
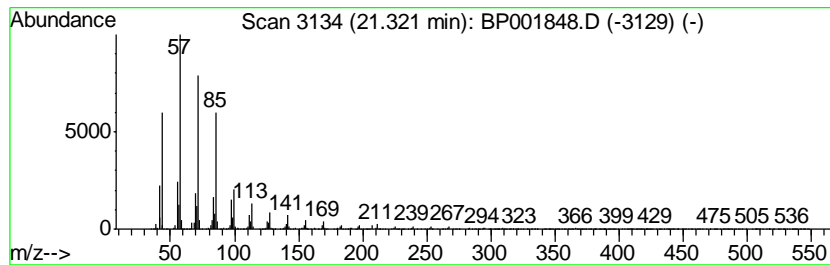
TIC Library : C:\DATABASE\NIST11.L  
 TIC Integration Parameters: LSCINT.P

\*\*\*\*\*  
 Peak Number 5 (DEL) Alkane: Straight-Chai... Concentration Rank 10

R.T.	EstConc	Area	Relative to ISTD	R.T.
21.32	2.78 ng/ul	958607	Chrysene-d12	21.13

Hit#	of	Tentative ID	MW	MolForm	CAS#	Qual
1	5	Hentriacontane	437	C31H64	000630-04-6	96
2		Nonadecane	268	C19H40	000629-92-5	93
3		Heneicosane, 11-pentyl-	366	C26H54	014739-72-1	93
4		Heptadecane, 9-hexyl-	324	C23H48	055124-79-3	93
5		2-methyloctacosane	408	C29H60	1000376-72-8	91



Data Path : Z:\SVOASRV\HPCHEM1\BNA P\DATA\BP022120\  
 Data File : BP001848.D  
 Acq On : 22 Feb 2020 05:44  
 Operator : CG/JU  
 Sample : L1506-21  
 Misc :  
 ALS Vial : 28 Sample Multiplier: 1

Instrument :  
 BNA\_P  
 ClientSampleID :  
 DBCZ9

Quant Method : Z:\SVOASRV\HPCHEM1\BNA\_P\METHODS\SOM-EPA-BP021820MA.M  
 Quant Title : SVOA CALIBRATION

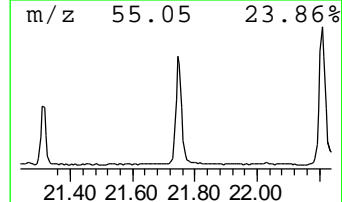
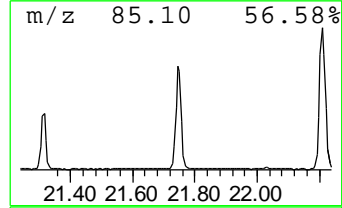
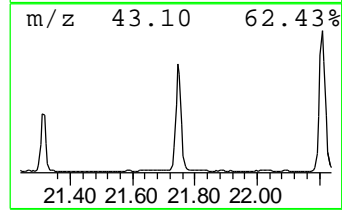
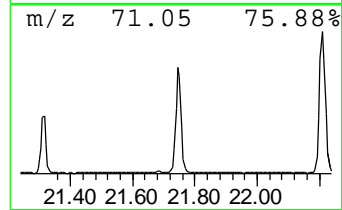
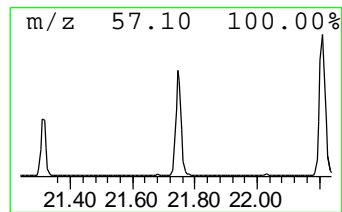
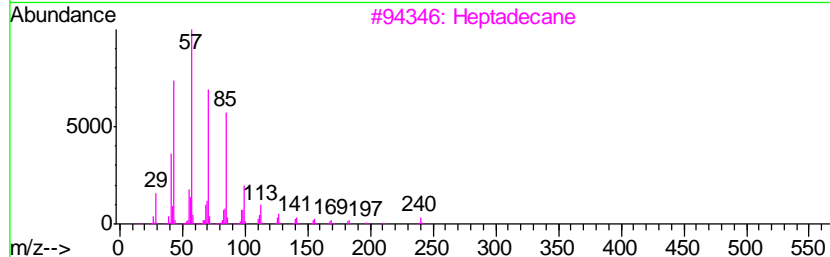
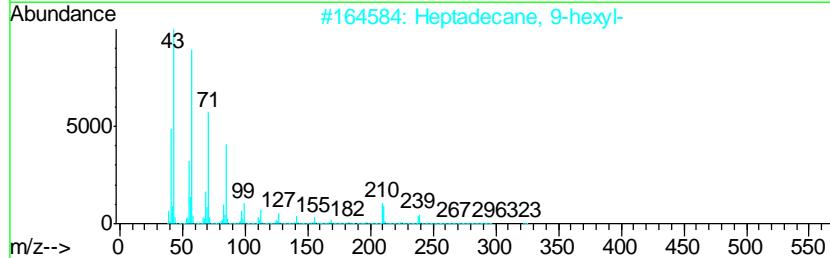
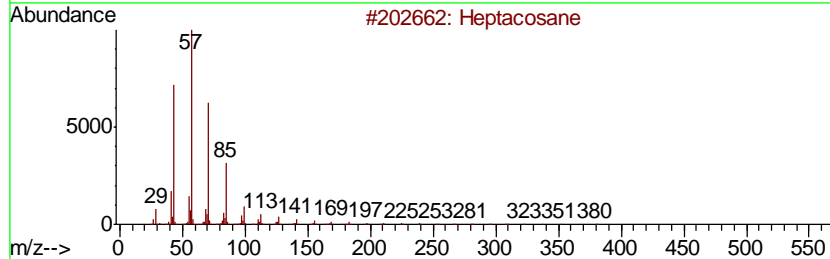
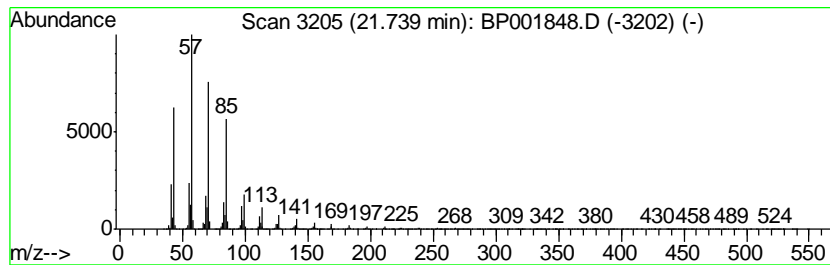
TIC Library : C:\DATABASE\NIST11.L  
 TIC Integration Parameters: LSCINT.P

\*\*\*\*\*  
 Peak Number 6 (DEL) Alkane: Straight-Chai... Concentration Rank 8

R.T.	EstConc	Area	Relative to ISTD	R.T.
21.74	5.67 ng/ul	1956720	Chrysene-d12	21.13

Hit#	of	Tentative ID	MW	MolForm	CAS#	Qual
1	5	Heptacosane	380	C27H56	000593-49-7	97
2		Heptadecane, 9-hexyl-	324	C23H48	055124-79-3	94
3		Heptadecane	240	C17H36	000629-78-7	94
4		Eicosane	282	C20H42	000112-95-8	94
5		Hentriacontane	437	C31H64	000630-04-6	91



Data Path : Z:\SVOASRV\HPCHEM1\BNA P\DATA\BP022120\  
 Data File : BP001848.D  
 Acq On : 22 Feb 2020 05:44  
 Operator : CG/JU  
 Sample : L1506-21  
 Misc :  
 ALS Vial : 28 Sample Multiplier: 1

Instrument :  
 BNA\_P  
 ClientSampleId :  
 DBCZ9

Quant Method : Z:\SVOASRV\HPCHEM1\BNA\_P\METHODS\SOM-EPA-BP021820MA.M  
 Quant Title : SVOA CALIBRATION

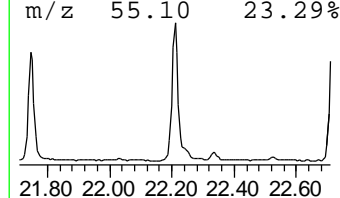
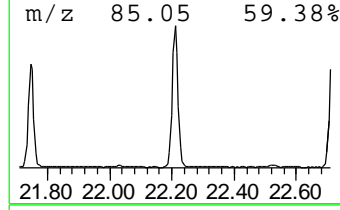
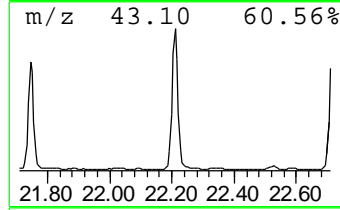
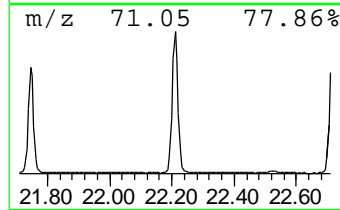
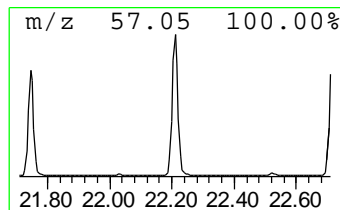
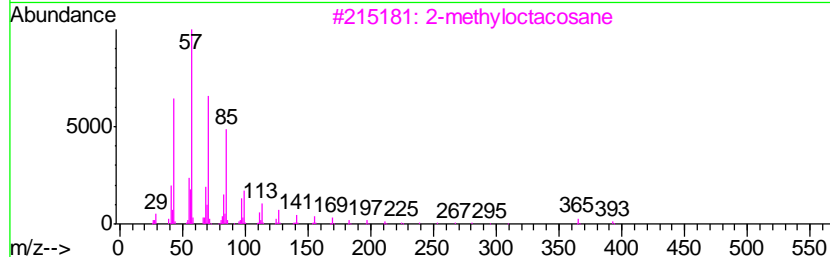
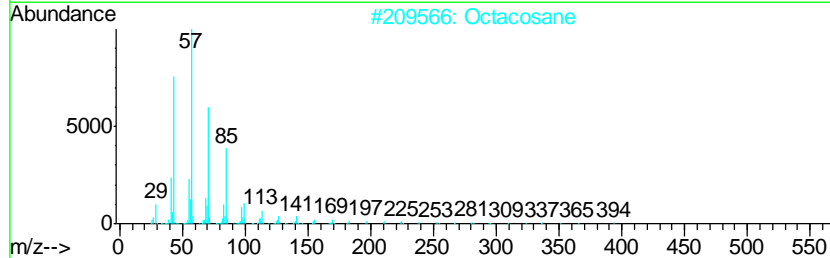
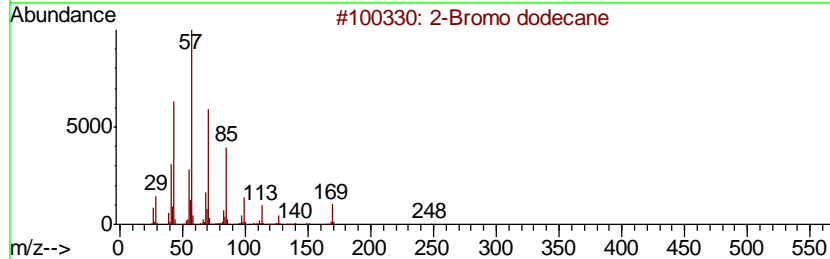
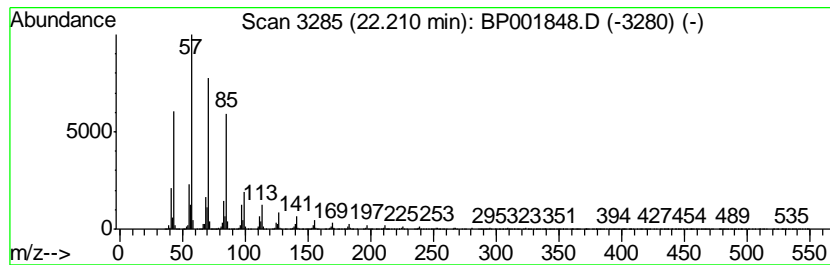
TIC Library : C:\DATABASE\NIST11.L  
 TIC Integration Parameters: LSCINT.P

\*\*\*\*\*  
 Peak Number 7 2-Bromo dodecane Concentration Rank 5

R.T.	EstConc	Area	Relative to ISTD	R.T.
22.21	8.15 ng/ul	2815680	Chrysene-d12	21.13

Hit#	of	Tentative ID	MW	MolForm	CAS#	Qual
1	5	2-Bromo dodecane	248	C12H25Br	013187-99-0	94
2		Octacosane	394	C28H58	000630-02-4	91
3		2-methyloctacosane	408	C29H60	1000376-72-8	91
4		Heneicosane	296	C21H44	000629-94-7	91
5		Heneicosane	296	C21H44	000629-94-7	91



Data Path : Z:\SVOASRV\HPCHEM1\BNA P\DATA\BP022120\  
 Data File : BP001848.D  
 Acq On : 22 Feb 2020 05:44  
 Operator : CG/JU  
 Sample : L1506-21  
 Misc :  
 ALS Vial : 28 Sample Multiplier: 1

Instrument :  
 BNA\_P  
 ClientSampleId :  
 DBCZ9

Quant Method : Z:\SVOASRV\HPCHEM1\BNA\_P\METHODS\SOM-EPA-BP021820MA.M  
 Quant Title : SVOA CALIBRATION

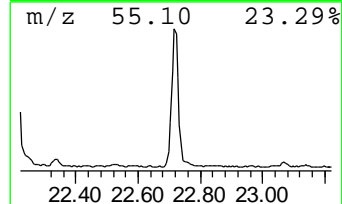
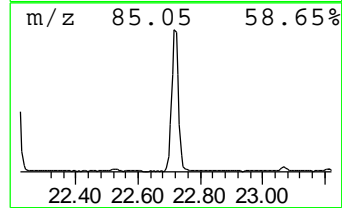
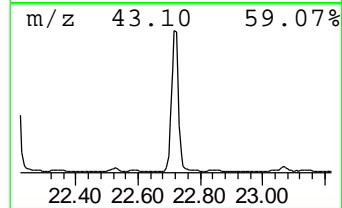
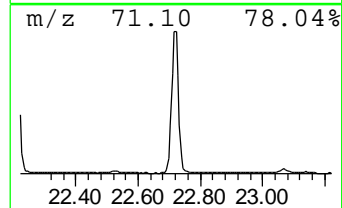
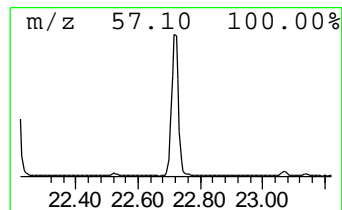
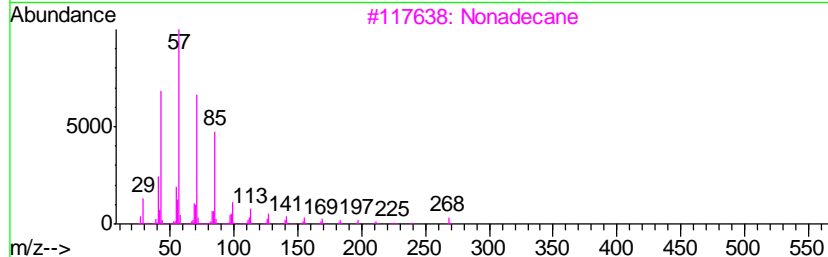
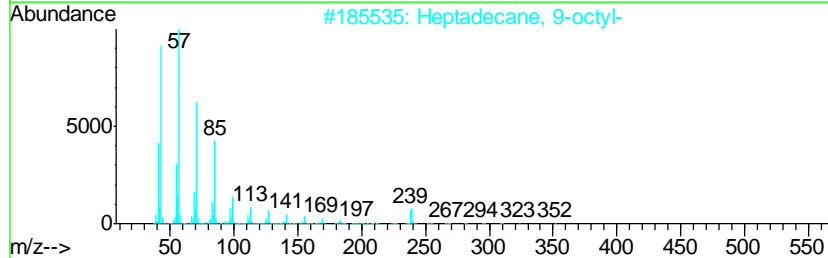
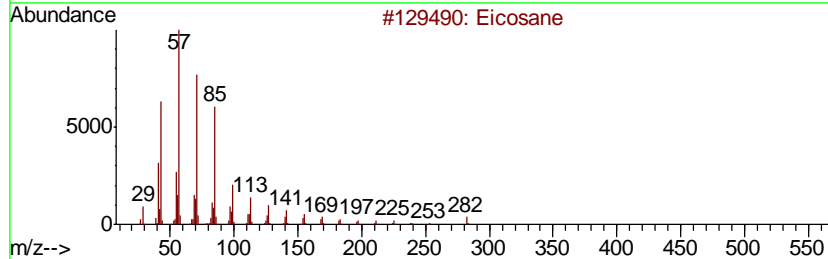
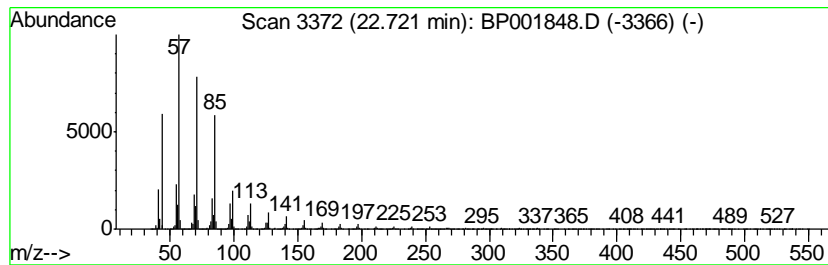
TIC Library : C:\DATABASE\NIST11.L  
 TIC Integration Parameters: LSCINT.P

\*\*\*\*\*  
 Peak Number 8 (DEL) Alkane: Straight-Chai... Concentration Rank 3

R.T.	EstConc	Area	Relative to ISTD	R.T.
22.72	9.18 ng/ul	3268980	Perylene-d12	23.35

Hit#	of	Tentative ID	MW	MolForm	CAS#	Qual
1	5	Eicosane	282	C20H42	000112-95-8	97
2		Heptadecane, 9-octyl-	352	C25H52	007225-64-1	95
3		Nonadecane	268	C19H40	000629-92-5	94
4		Eicosane, 10-methyl-	296	C21H44	054833-23-7	93
5		2-methyloctacosane	408	C29H60	1000376-72-8	91



Data Path : Z:\SVOASRV\HPCHEM1\BNA P\DATA\BP022120\  
 Data File : BP001848.D  
 Acq On : 22 Feb 2020 05:44  
 Operator : CG/JU  
 Sample : L1506-21  
 Misc :  
 ALS Vial : 28 Sample Multiplier: 1

Instrument :  
 BNA\_P  
 ClientSampleID :  
 DBCZ9

Quant Method : Z:\SVOASRV\HPCHEM1\BNA\_P\METHODS\SOM-EPA-BP021820MA.M  
 Quant Title : SVOA CALIBRATION

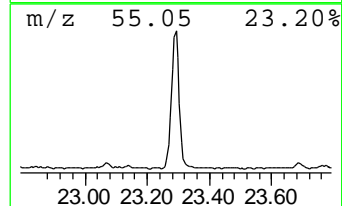
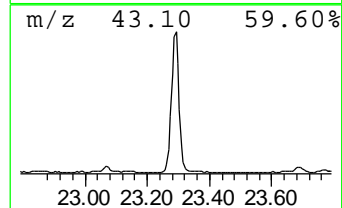
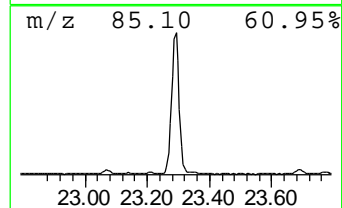
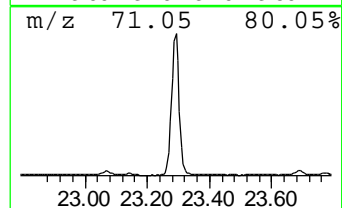
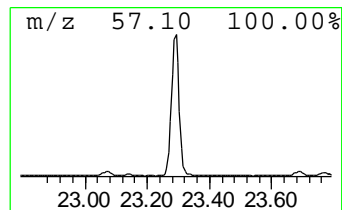
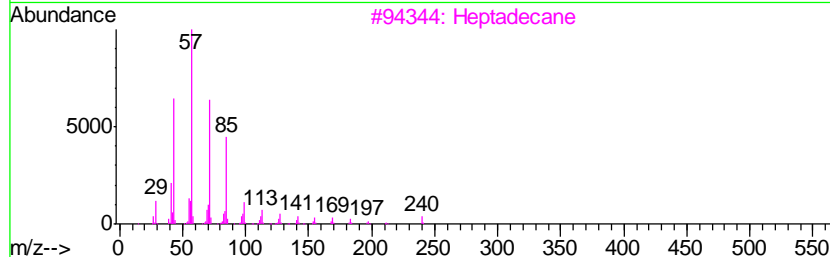
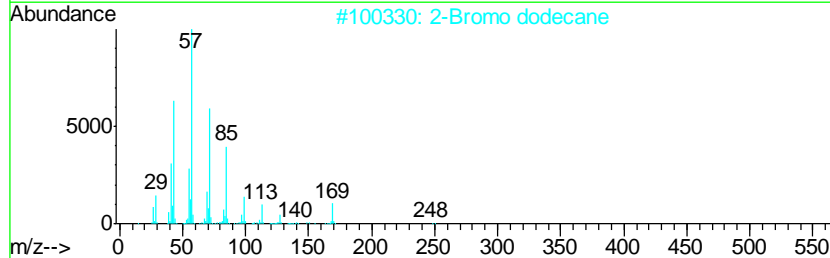
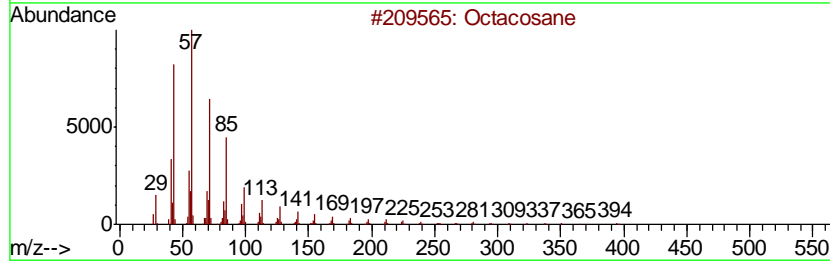
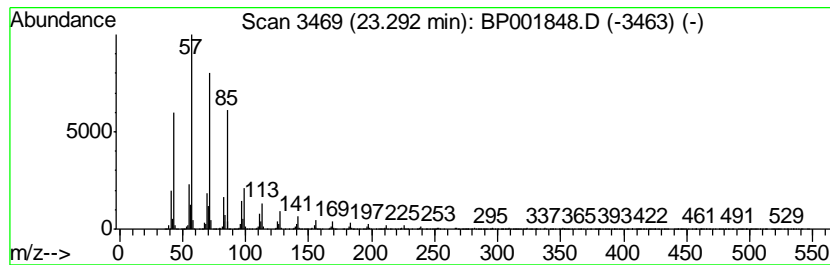
TIC Library : C:\DATABASE\NIST11.L  
 TIC Integration Parameters: LSCINT.P

\*\*\*\*\*  
 Peak Number 9 (DEL) Alkane: Straight-Chai... Concentration Rank 2

R.T.	EstConc	Area	Relative to ISTD	R.T.
23.29	9.51 ng/ul	3387030	Perylene-d12	23.35

Hit#	of	Tentative ID	MW	MolForm	CAS#	Qual
1	5	Octacosane	394	C28H58	000630-02-4	98
2		2-Bromo dodecane	248	C12H25Br	013187-99-0	95
3		Heptadecane	240	C17H36	000629-78-7	93
4		Heptadecane, 9-octyl-	352	C25H52	007225-64-1	93
5		Tetratetracontane	619	C44H90	007098-22-8	91



Data Path : Z:\SVOASRV\HPCHEM1\BNA P\DATA\BP022120\  
 Data File : BP001848.D  
 Acq On : 22 Feb 2020 05:44  
 Operator : CG/JU  
 Sample : L1506-21  
 Misc :  
 ALS Vial : 28 Sample Multiplier: 1

Instrument :  
 BNA\_P  
 ClientSampleID :  
 DBCZ9

Quant Method : Z:\SVOASRV\HPCHEM1\BNA\_P\METHODS\SOM-EPA-BP021820MA.M  
 Quant Title : SVOA CALIBRATION

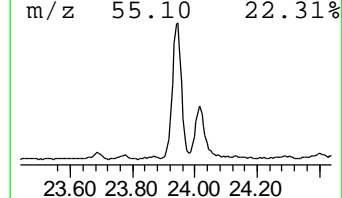
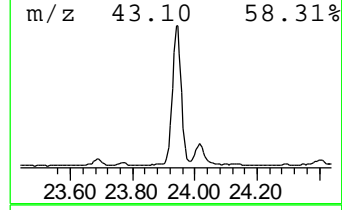
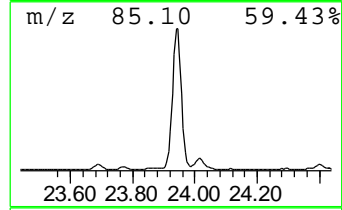
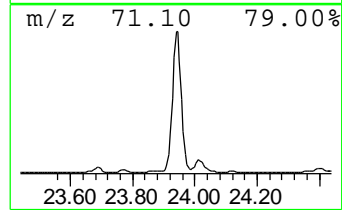
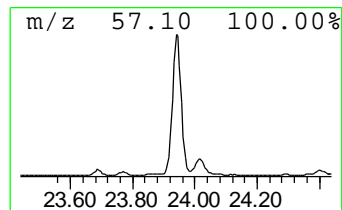
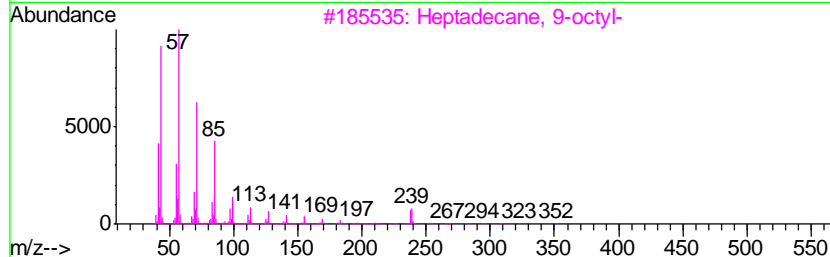
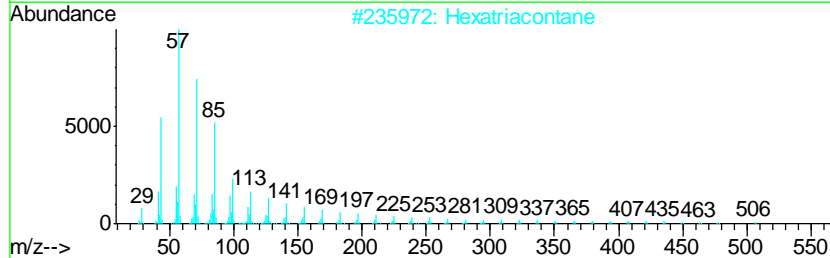
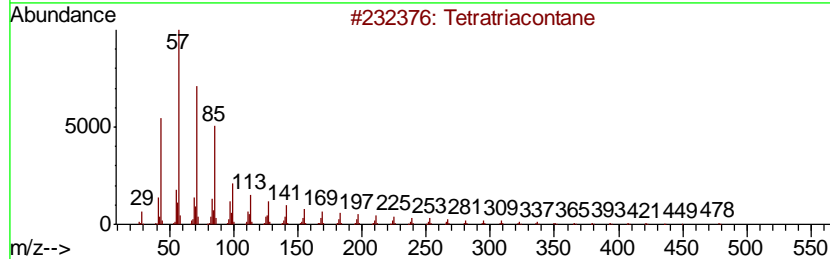
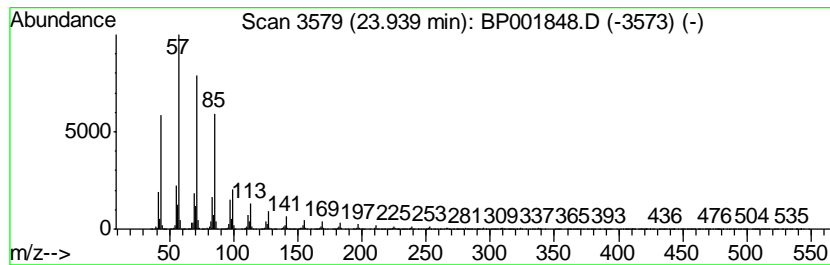
TIC Library : C:\DATABASE\NIST11.L  
 TIC Integration Parameters: LSCINT.P

\*\*\*\*\*  
 Peak Number 10 (DEL) Alkane: Straight-Chai... Concentration Rank 4

R.T.	EstConc	Area	Relative to ISTD	R.T.
23.94	8.16 ng/ul	2905920	Perylene-d12	23.35

Hit#	of	Tentative ID	MW	MolForm	CAS#	Qual
1	5	Tetratriacontane	479	C34H70	014167-59-0	96
2		Hexatriacontane	507	C36H74	000630-06-8	95
3		Heptadecane, 9-octyl-	352	C25H52	007225-64-1	95
4		Docosane, 11-butyl-	366	C26H54	013475-76-8	94
5		Hexatriacontane	507	C36H74	000630-06-8	93



Data Path : Z:\SVOASRV\HPCHEM1\BNA P\DATA\BP022120\  
 Data File : BP001848.D  
 Acq On : 22 Feb 2020 05:44  
 Operator : CG/JU  
 Sample : L1506-21  
 Misc :  
 ALS Vial : 28 Sample Multiplier: 1

Instrument :  
 BNA\_P  
 ClientSampleID :  
 DBCZ9

Quant Method : Z:\SVOASRV\HPCHEM1\BNA\_P\METHODS\SOM-EPA-BP021820MA.M  
 Quant Title : SVOA CALIBRATION

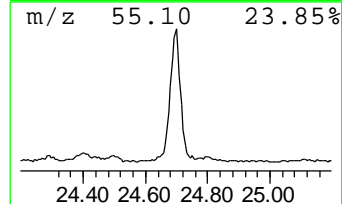
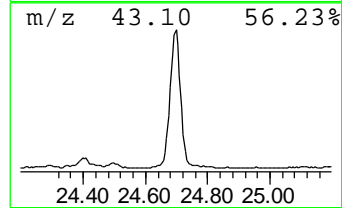
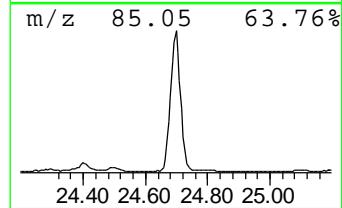
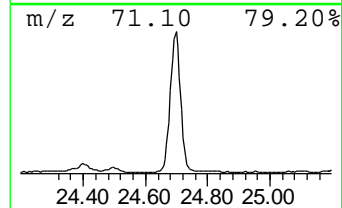
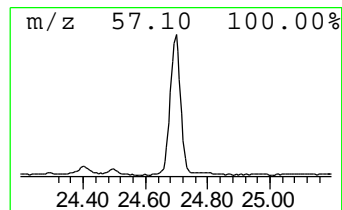
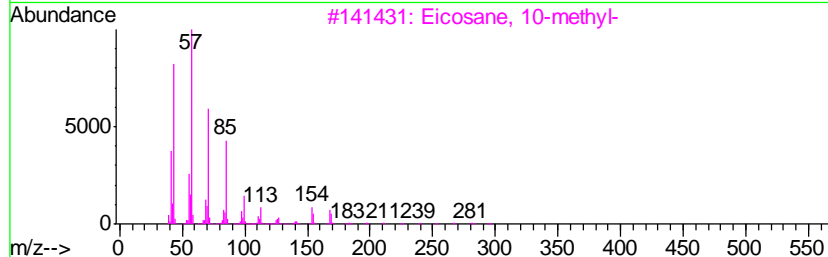
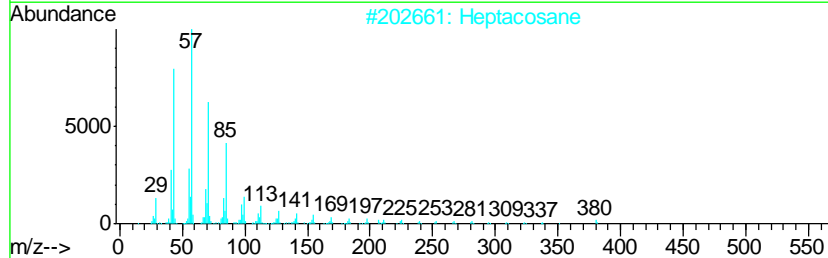
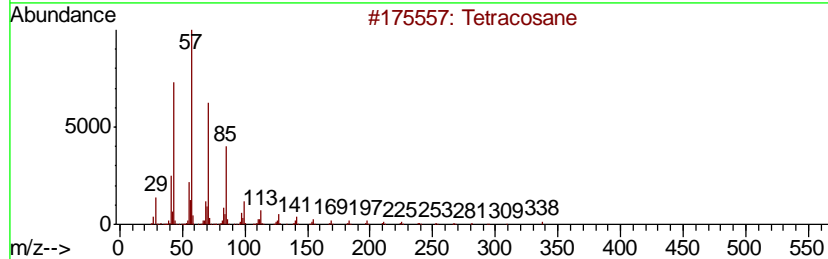
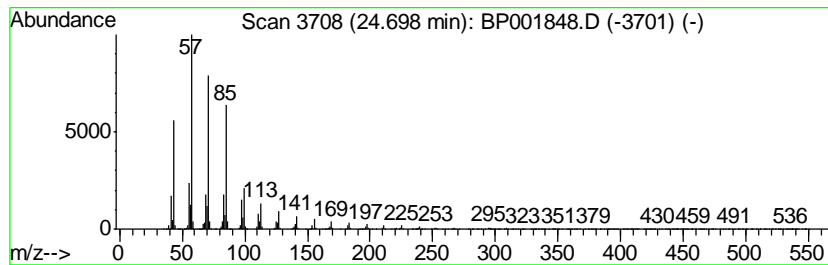
TIC Library : C:\DATABASE\NIST11.L  
 TIC Integration Parameters: LSCINT.P

\*\*\*\*\*  
 Peak Number 11 (DEL) Alkane: Straight-Chai... Concentration Rank 9

R.T.	EstConc	Area	Relative to ISTD	R.T.
24.70	5.26 ng/ul	1874640	Perylene-d12	23.35

Hit#	of	Tentative ID	MW	MolForm	CAS#	Qual
1	5	Tetracosane	338	C24H50	000646-31-1	95
2		Heptacosane	380	C27H56	000593-49-7	95
3		Eicosane, 10-methyl-	296	C21H44	054833-23-7	91
4		Tetracosane	338	C24H50	000646-31-1	91
5		Heneicosane	296	C21H44	000629-94-7	91



Data Path : Z:\SVOASRV\HPCHEM1\BNA P\DATA\BP022120\  
 Data File : BP001848.D  
 Acq On : 22 Feb 2020 05:44  
 Operator : CG/JU  
 Sample : L1506-21  
 Misc :  
 ALS Vial : 28 Sample Multiplier: 1

Instrument :  
 BNA\_P  
 ClientSampleID :  
 DBCZ9

Quant Method : Z:\SVOASRV\HPCHEM1\BNA\_P\METHODS\SOM-EPA-BP021820MA.M  
 Quant Title : SVOA CALIBRATION

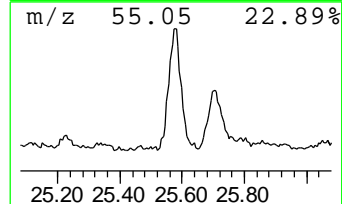
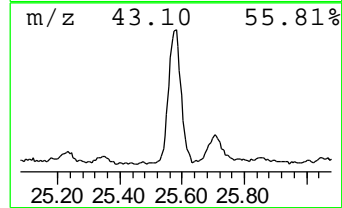
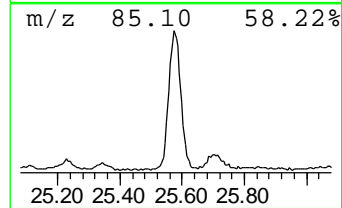
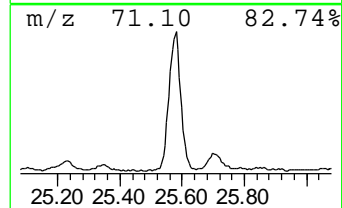
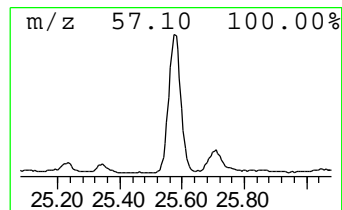
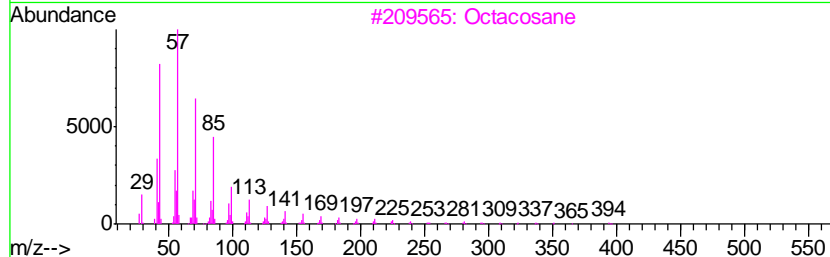
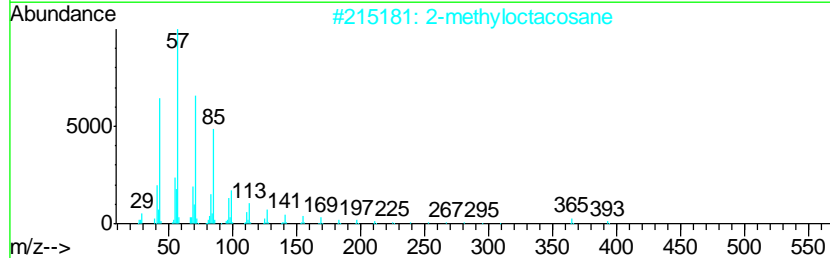
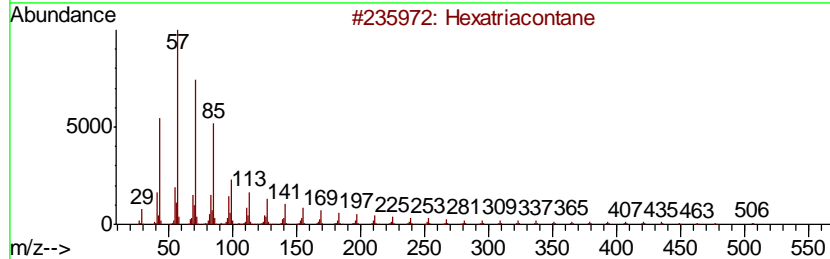
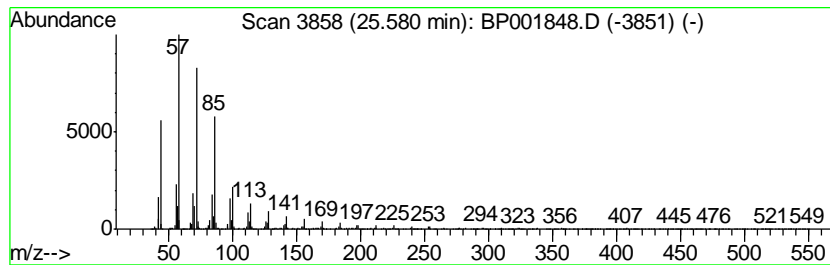
TIC Library : C:\DATABASE\NIST11.L  
 TIC Integration Parameters: LSCINT.P

\*\*\*\*\*  
 Peak Number 12 (DEL) Alkane: Straight-Chai... Concentration Rank 11

R.T.	EstConc	Area	Relative to ISTD	R.T.
25.58	2.41 ng/ul	857121	Perylene-d12	23.35

Hit#	of	Tentative ID	MW	MolForm	CAS#	Qual
1	5	Hexatriacontane	507	C36H74	000630-06-8	94
2		2-methyloctacosane	408	C29H60	1000376-72-8	91
3		Octacosane	394	C28H58	000630-02-4	91
4		Heptacosane	380	C27H56	000593-49-7	91
5		Heptadecane, 9-octyl-	352	C25H52	007225-64-1	91





Data Path : Z:\SVOASRV\HPCHEM1\BNA\_P\DATA\BP022120\  
 Data File : BP001848.D  
 Acq On : 22 Feb 2020 05:44  
 Operator : CG/JU  
 Sample : L1506-21  
 Misc :  
 ALS Vial : 28 Sample Multiplier: 1

Instrument :  
 BNA\_P  
 ClientSampleId :  
 DBCZ9

Quant Method : Z:\SVOASRV\HPCHEM1\BNA\_P\METHODS\SOM-EPA-BP021820MA.M  
 Quant Title : SVOA CALIBRATION

TIC Library : C:\DATABASE\NIST11.L  
 TIC Integration Parameters: LSCINT.P

TIC Top Hit name	RT	EstConc	Units	Response	--Internal Standard--			
					#	RT	Resp	Conc
Butane, 2-methoxy...	2.92	9.6	ng/ul	981893	1	7.65	2038000	20.0
n-Hexadecanoic acid	17.97	7.5	ng/ul	2066310	4	17.04	5535260	20.0
Octadecanoic acid	19.20	2.0	ng/ul	691768	5	21.13	6906780	20.0
1-Heneicosanol	20.87	7.8	ng/ul	2695030	5	21.13	6906780	20.0
(DEL) Alkane: Str...	21.32	2.8	ng/ul	958607	5	21.13	6906780	20.0
(DEL) Alkane: Str...	21.74	5.7	ng/ul	1956720	5	21.13	6906780	20.0
2-Bromo dodecane	22.21	8.2	ng/ul	2815680	5	21.13	6906780	20.0
(DEL) Alkane: Str...	22.72	9.2	ng/ul	3268980	6	23.35	7125230	20.0
(DEL) Alkane: Str...	23.29	9.5	ng/ul	3387030	6	23.35	7125230	20.0
(DEL) Alkane: Str...	23.94	8.2	ng/ul	2905920	6	23.35	7125230	20.0
(DEL) Alkane: Str...	24.70	5.3	ng/ul	1874640	6	23.35	7125230	20.0
(DEL) Alkane: Str...	25.58	2.4	ng/ul	857121	6	23.35	7125230	20.0