

Data Path : Z:\SVOASRV\HPCHEM1\BNA_P\DATA\BP022120\
 Data File : BP001850.D
 Acq On : 22 Feb 2020 06:51
 Operator : CG/JU
 Sample : L1506-24
 Misc :
 ALS Vial : 30 Sample Multiplier: 1

Instrument :
 BNA_P
 ClientSampleId :
 TP-32-33-COMP

Integration Parameters: LSCINT.P

Integrator: RTE
 Smoothing : OFF
 Sampling : 1
 Start Thrs: 0.2
 Stop Thrs : 0

Filtering: 5
 Min Area: 0.1 % of largest Peak
 Max Peaks: 100
 Peak Location: TOP

If leading or trailing edge < 100 prefer < Baseline drop else tangent >
 Peak separation: 5

Method : Z:\SVOASRV\HPCHEM1\BNA_P\METHODS\SOM-EPA-BP021820MA.M
 Title : SVOA CALIBRATION

Signal : TIC

peak #	R.T. min	first scan	max scan	last scan	PK TY	peak height	corr. area	corr. % max.	% of total
1	2.923	3	6	22	rVB	541727	814863	4.08%	0.182%
2	3.170	44	48	51	rBV	81069	109096	0.55%	0.024%
3	3.205	51	54	68	rVB	280925	405966	2.03%	0.091%
4	4.805	320	326	336	rBV	850981	1256152	6.29%	0.280%
5	6.793	656	664	668	rBV	1904753	3220325	16.12%	0.719%
6	6.864	672	676	685	rVB	3297167	5332289	26.68%	1.190%
7	6.993	692	698	707	rBV	1440116	2219467	11.11%	0.495%
8	7.087	707	714	724	rVV	1859776	2708818	13.56%	0.604%
9	7.193	724	732	743	rVB	2001312	3163817	15.83%	0.706%
10	7.652	802	810	818	rBV	1373618	2162103	10.82%	0.482%
11	8.358	923	930	943	rVV	2418062	3885735	19.44%	0.867%
12	8.728	984	993	999	rBV	3660453	5912509	29.59%	1.319%
13	8.793	999	1004	1008	rVV	1765006	2966422	14.84%	0.662%
14	8.840	1008	1012	1019	rVB	1199159	1910093	9.56%	0.426%
15	9.287	1080	1088	1095	rBV	120536	180613	0.90%	0.040%
16	9.516	1119	1127	1129	rBV	1538914	2538926	12.71%	0.567%
17	9.546	1129	1132	1150	rVB	2050139	3205283	16.04%	0.715%
18	10.052	1210	1218	1234	rBV	2644184	4374812	21.89%	0.976%
19	10.428	1274	1282	1286	rBV	1972598	3528694	17.66%	0.787%
20	10.475	1286	1290	1297	rVV	4803381	8008777	40.08%	1.787%
21	10.557	1297	1304	1318	rVB	2046254	3474667	17.39%	0.775%
22	11.969	1535	1544	1550	rBV2	186099	354933	1.78%	0.079%
23	12.016	1550	1552	1558	rVB2	48175	70964	0.36%	0.016%
24	12.099	1558	1566	1574	rBV	8048412	12969045	64.90%	2.894%
25	12.210	1580	1585	1592	rVB	33043	66907	0.33%	0.015%
26	12.316	1592	1603	1613	rBV	4283825	6913208	34.59%	1.543%
27	12.469	1621	1629	1638	rVB	2530448	3981672	19.93%	0.888%
28	12.781	1674	1682	1700	rBV	6101026	9476101	47.42%	2.114%
29	13.122	1725	1740	1743	rBV	7234468	11424388	57.17%	2.549%
30	13.157	1743	1746	1751	rVV	5727493	8072134	40.39%	1.801%
31	13.210	1751	1755	1767	rVV	819728	1254692	6.28%	0.280%
32	13.704	1832	1839	1844	rBV	4477546	6418378	32.12%	1.432%
33	13.751	1844	1847	1859	rVV	889254	1149411	5.75%	0.256%
34	13.845	1859	1863	1871	rVB5	23749	37838	0.19%	0.008%

Data Path : Z:\SVOASRV\HPCHEM1\BNA_P\DATA\BP022120\
 Data File : BP001850.D
 Acq On : 22 Feb 2020 06:51
 Operator : CG/JU
 Sample : L1506-24
 Misc :
 ALS Vial : 30 Sample Multiplier: 1

Instrument :
 BNA_P
 ClientSampleId :
 TP-32-33-COMP

Integration Parameters: LSCINT.P

Integrator: RTE
 Smoothing : OFF Filtering: 5
 Sampling : 1 Min Area: 0.1 % of largest Peak
 Start Thrs: 0.2 Max Peaks: 100
 Stop Thrs : 0 Peak Location: TOP

If leading or trailing edge < 100 prefer < Baseline drop else tangent >
 Peak separation: 5

Method : Z:\SVOASRV\HPCHEM1\BNA_P\METHODS\SOM-EPA-BP021820MA.M
 Title : SVOA CALIBRATION

35	13.981	1878	1886	1888	rBV	5422070	8333173	41.70%	1.859%
36	14.010	1888	1891	1908	rVB	5658185	7939458	39.73%	1.771%
37	14.293	1931	1939	1944	rBV	2997163	4647351	23.26%	1.037%
38	14.357	1944	1950	1963	rVB	6093716	8987940	44.98%	2.005%
39	14.504	1963	1975	1980	rBV3	2808893	5684059	28.44%	1.268%
40	14.569	1980	1986	1994	rVV	4384144	6330782	31.68%	1.413%
41	14.657	1994	2001	2003	rVV	2306664	3297114	16.50%	0.736%
42	14.693	2003	2007	2021	rVB	2904545	4221128	21.12%	0.942%
43	15.134	2075	2082	2087	rBV	3431476	4676881	23.40%	1.044%
44	15.181	2087	2090	2095	rVB	61678	80408	0.40%	0.018%
45	15.287	2102	2108	2113	rBV	6558855	9825280	49.17%	2.192%
46	15.345	2113	2118	2123	rVV	7340504	10431376	52.20%	2.328%
47	15.404	2123	2128	2142	rVV	1706703	2417910	12.10%	0.539%
48	15.528	2144	2149	2154	rVV	86412	133529	0.67%	0.030%
49	15.592	2156	2160	2165	rVV2	36318	52135	0.26%	0.012%
50	15.987	2217	2227	2234	rBV2	55062	130038	0.65%	0.029%
51	16.075	2239	2242	2250	rVB4	43210	69014	0.35%	0.015%
52	16.228	2261	2268	2278	rVB3	23698	57414	0.29%	0.013%
53	16.310	2278	2282	2284	rBV	37385	48439	0.24%	0.011%
54	16.351	2284	2289	2295	rVB	2686906	3844044	19.24%	0.858%
55	16.839	2366	2372	2380	rVB5	48476	116765	0.58%	0.026%
56	17.039	2400	2406	2410	rBV	3904730	5938455	29.72%	1.325%
57	17.086	2410	2414	2418	rVV	7406774	10464777	52.37%	2.335%
58	17.145	2418	2424	2426	rVV2	6593170	10507693	52.58%	2.345%
59	17.175	2426	2429	2444	rVB	10595207	15406694	77.10%	3.438%
60	17.457	2471	2477	2484	rVB2	233860	352044	1.76%	0.079%
61	17.581	2494	2498	2501	rBV2	26900	36543	0.18%	0.008%
62	17.745	2521	2526	2532	rVB3	46953	81508	0.41%	0.018%
63	17.963	2559	2563	2568	rBV	207629	325095	1.63%	0.073%
64	18.022	2571	2573	2578	rVB	77370	92270	0.46%	0.021%
65	18.134	2590	2592	2600	rVB2	37338	54319	0.27%	0.012%
66	18.251	2608	2612	2616	rBV2	113776	178263	0.89%	0.040%
67	18.286	2616	2618	2622	rVB	37323	47501	0.24%	0.011%
68	18.433	2638	2643	2648	rVB	256847	337960	1.69%	0.075%
69	18.598	2667	2671	2677	rVB	90257	128453	0.64%	0.029%
70	18.798	2702	2705	2711	rVB4	55007	74172	0.37%	0.017%
71	18.869	2711	2717	2723	rBV3	142758	268563	1.34%	0.060%

Data Path : Z:\SVOASRV\HPCHEM1\BNA_P\DATA\BP022120\
 Data File : BP001850.D
 Acq On : 22 Feb 2020 06:51
 Operator : CG/JU
 Sample : L1506-24
 Misc :
 ALS Vial : 30 Sample Multiplier: 1

Instrument :
 BNA_P
 ClientSampleId :
 TP-32-33-COMP

Integration Parameters: LSCINT.P

Integrator: RTE
 Smoothing : OFF
 Sampling : 1
 Start Thrs: 0.2
 Stop Thrs : 0

Filtering: 5
 Min Area: 0.1 % of largest Peak
 Max Peaks: 100
 Peak Location: TOP

If leading or trailing edge < 100 prefer < Baseline drop else tangent >
 Peak separation: 5

Method : Z:\SVOASRV\HPCHEM1\BNA_P\METHODS\SOM-EPA-BP021820MA.M
 Title : SVOA CALIBRATION

72	19.063	2740	2750	2760	rBV	9224758	12238859	61.25%	2.731%
73	19.204	2771	2774	2777	rBV3	46794	67458	0.34%	0.015%
74	19.275	2782	2786	2788	rBV	90805	140756	0.70%	0.031%
75	19.386	2799	2805	2807	rBV	9227056	13154228	65.83%	2.935%
76	19.416	2807	2810	2817	rVB	7984418	10226731	51.18%	2.282%
77	19.910	2891	2894	2897	rBV2	45849	55824	0.28%	0.012%
78	19.951	2898	2901	2907	rVB3	73758	89272	0.45%	0.020%
79	20.410	2976	2979	2980	rBV2	37979	40932	0.20%	0.009%
80	20.433	2980	2983	2991	rVB	170816	202977	1.02%	0.045%
81	20.875	3053	3058	3073	rBV2	2719939	3876161	19.40%	0.865%
82	21.122	3094	3100	3105	rBV2	9453557	17541062	87.78%	3.914%
83	21.169	3105	3108	3117	rVB	7151253	9051852	45.30%	2.020%
84	21.251	3118	3122	3128	rBV	212288	293016	1.47%	0.065%
85	21.310	3128	3132	3144	rVV	1612103	1897488	9.50%	0.423%
86	21.745	3201	3206	3219	rBV	3032371	3875951	19.40%	0.865%
87	21.945	3234	3240	3248	rVB	6258625	8001757	40.04%	1.785%
88	22.210	3280	3285	3297	rBV	3976399	5324891	26.65%	1.188%
89	22.692	3359	3367	3370	rBV	10381406	19983286	100.00%	4.459%
90	22.727	3370	3373	3388	rVB2	7625995	13270804	66.41%	2.961%
91	23.069	3428	3431	3439	rVB2	111197	176953	0.89%	0.039%
92	23.210	3447	3455	3459	rBV	6961397	14193122	71.02%	3.167%
93	23.257	3459	3463	3466	rVV	5649251	10476341	52.43%	2.338%
94	23.286	3466	3468	3473	rVV	3511560	5344742	26.75%	1.193%
95	23.351	3473	3479	3492	rVB	3766777	7009865	35.08%	1.564%
96	23.945	3572	3580	3587	rBV	2527474	5141832	25.73%	1.147%
97	24.016	3587	3592	3605	rVB2	515886	1060526	5.31%	0.237%
98	24.692	3700	3707	3718	rVB	1268181	2854247	14.28%	0.637%
99	25.592	3848	3860	3872	rBV2	6031345	17938426	89.77%	4.003%
100	26.274	3963	3976	3988	rVB	4839356	15460497	77.37%	3.450%

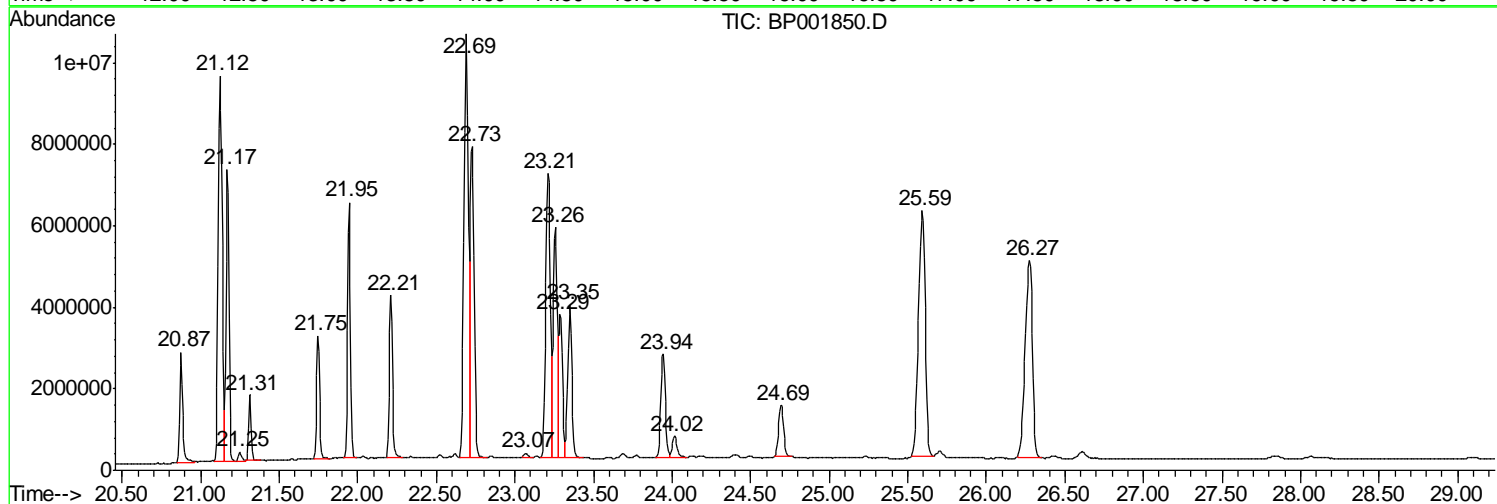
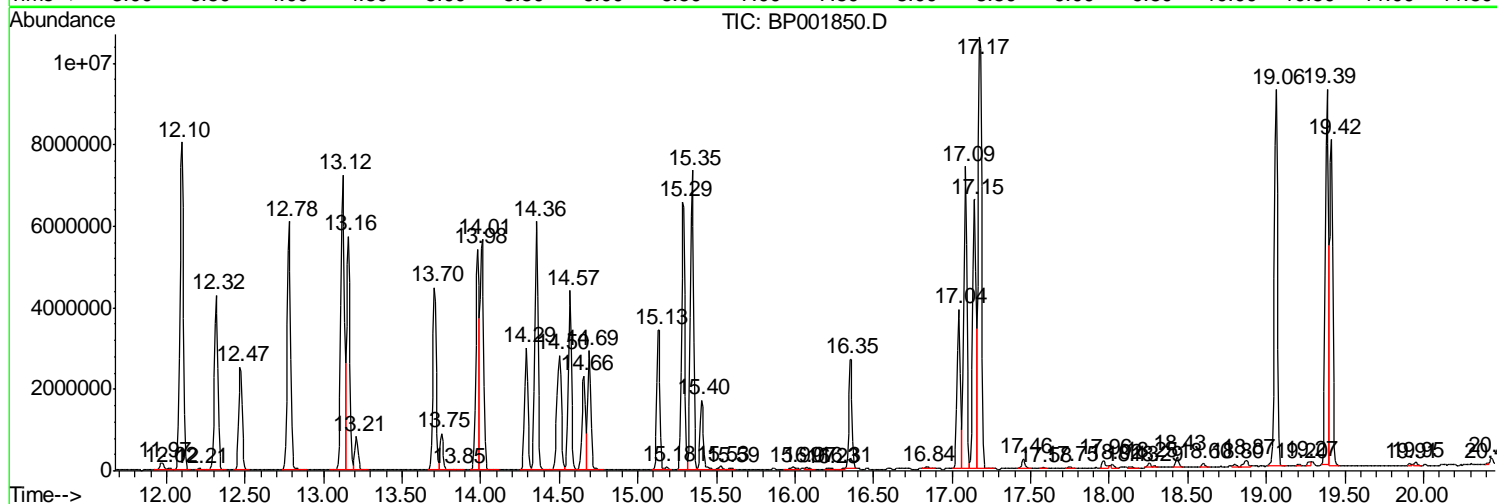
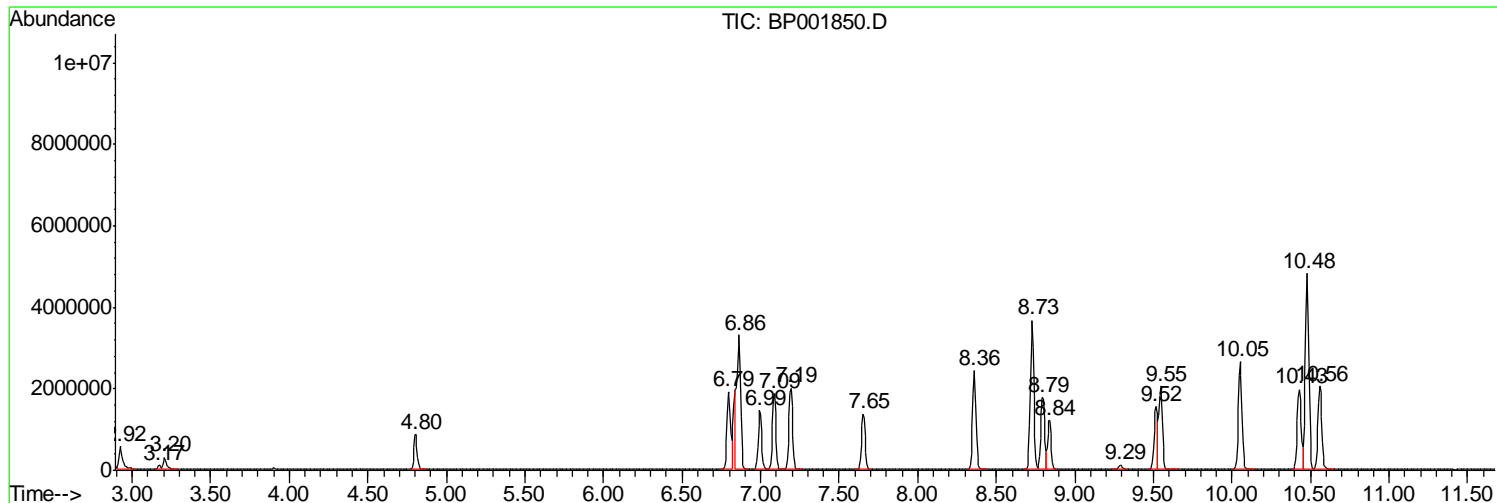
Sum of corrected areas: 448177502

Data Path : Z:\SVOASRV\HPCHEM1\BNA P\DATA\BP022120\
 Data File : BP001850.D
 Acq On : 22 Feb 2020 06:51
 Operator : CG/JU
 Sample : L1506-24
 Misc :
 ALS Vial : 30 Sample Multiplier: 1

Instrument :
 BNA_P
Client Sampled :
 TP-32-33-COMP

Quant Method : Z:\SVOASRV\HPCHEM1\BNA_P\METHODS\SOM-EPA-BP021820MA.M
 Quant Title : SVOA CALIBRATION

TIC Library : C:\DATABASE\NIST11.L
 TIC Integration Parameters: LSCINT.P



Data Path : Z:\SVOASRV\HPCHEM1\BNA P\DATA\BP022120\
 Data File : BP001850.D
 Acq On : 22 Feb 2020 06:51
 Operator : CG/JU
 Sample : L1506-24
 Misc :
 ALS Vial : 30 Sample Multiplier: 1

Instrument :
 BNA_P
 ClientSampleID :
 TP-32-33-COMP

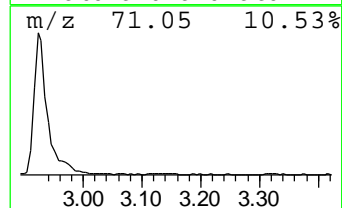
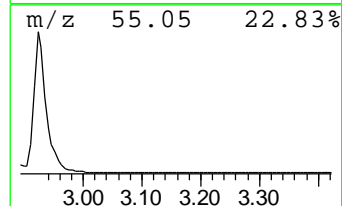
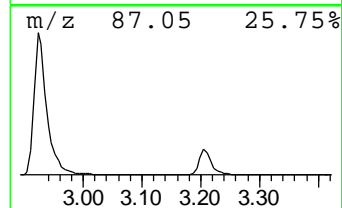
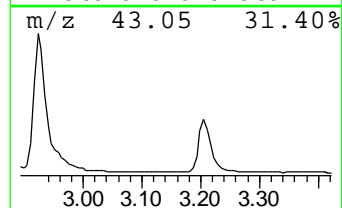
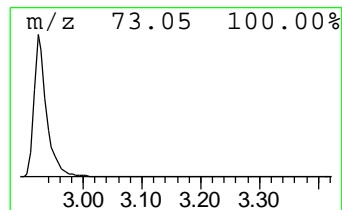
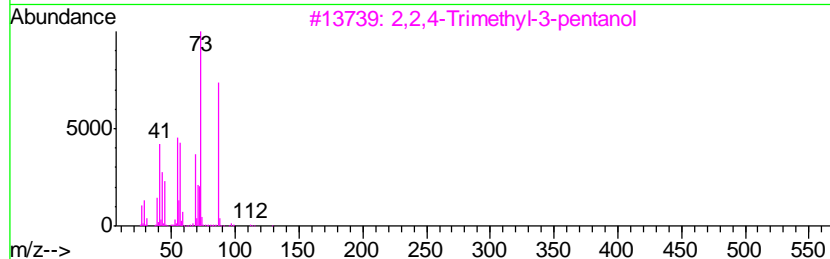
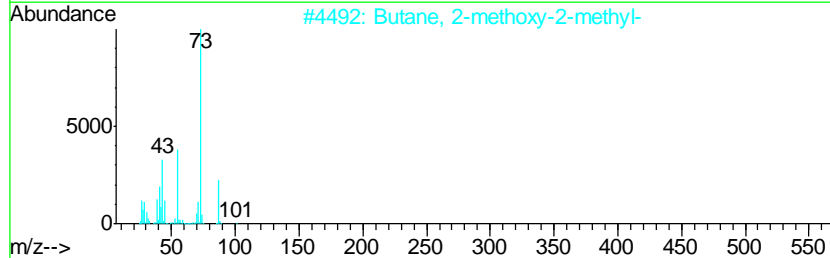
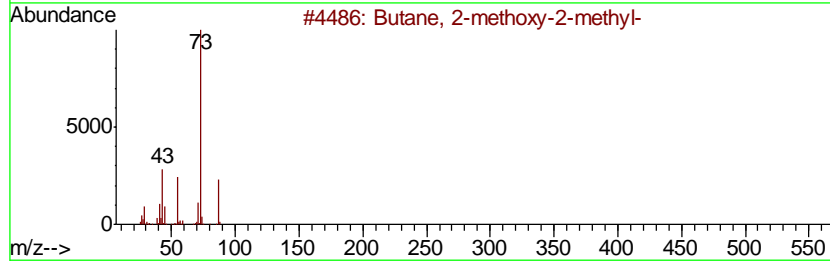
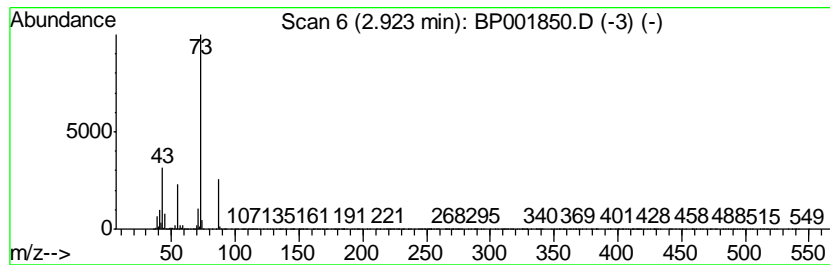
Quant Method : Z:\SVOASRV\HPCHEM1\BNA_P\METHODS\SOM-EPA-BP021820MA.M
 Quant Title : SVOA CALIBRATION

TIC Library : C:\DATABASE\NIST11.L
 TIC Integration Parameters: LSCINT.P

 Peak Number 1 Butane, 2-methoxy-2-methyl- Concentration Rank 6

R.T.	EstConc	Area	Relative to ISTD	R.T.
2.92	7.54 ng/ul	814863	1,4-Dichlorobenzene-d4	7.65

Hit#	of	Tentative ID	MW	MolForm	CAS#	Qual
1	5	Butane, 2-methoxy-2-methyl-	102	C6H14O	000994-05-8	90
2		Butane, 2-methoxy-2-methyl-	102	C6H14O	000994-05-8	64
3		2,2,4-Trimethyl-3-pentanol	130	C8H18O	005162-48-1	40
4		Pentane, 3-methoxy-	102	C6H14O	036839-67-5	17
5		Acetamide, N-ethyl-	87	C4H9NO	000625-50-3	9



Data Path : Z:\SVOASRV\HPCHEM1\BNA P\DATA\BP022120\
 Data File : BP001850.D
 Acq On : 22 Feb 2020 06:51
 Operator : CG/JU
 Sample : L1506-24
 Misc :
 ALS Vial : 30 Sample Multiplier: 1

Instrument :
 BNA_P
 ClientSampleId :
 TP-32-33-COMP

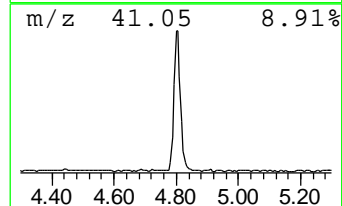
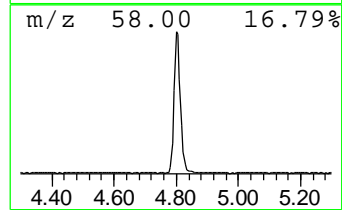
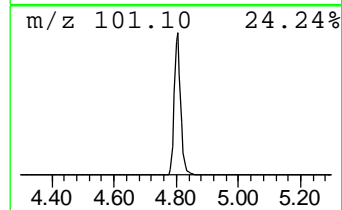
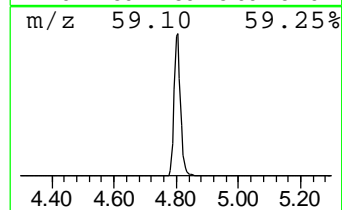
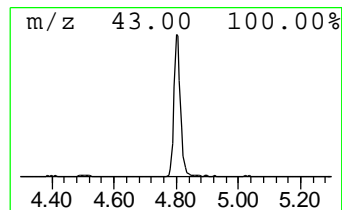
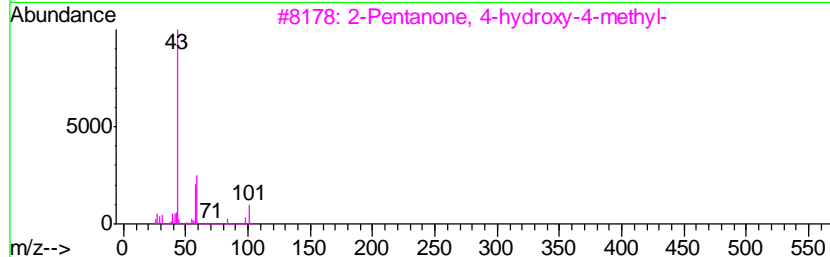
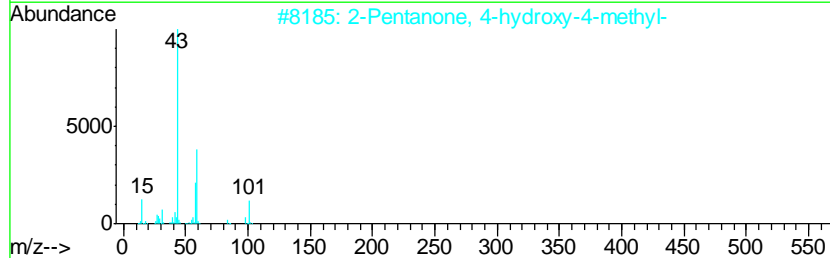
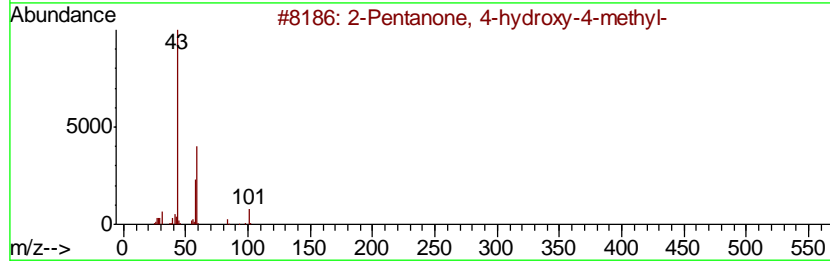
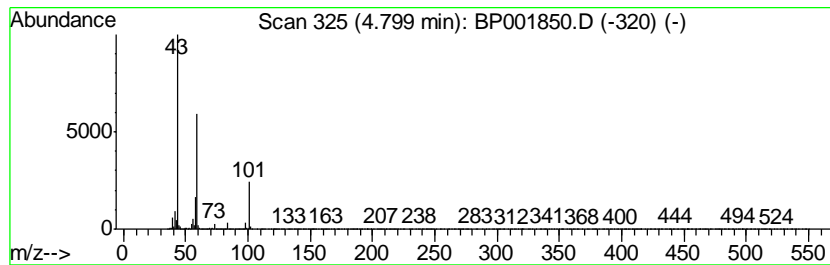
Quant Method : Z:\SVOASRV\HPCHEM1\BNA_P\METHODS\SOM-EPA-BP021820MA.M
 Quant Title : SVOA CALIBRATION

TIC Library : C:\DATABASE\NIST11.L
 TIC Integration Parameters: LSCINT.P

 Peak Number 2 2-Pentanone, 4-hydroxy-4-me... Concentration Rank 4

R.T.	EstConc	Area	Relative to ISTD	R.T.
4.80	11.62 ng/ul	1256150	1,4-Dichlorobenzene-d4	7.65

Hit#	of	Tentative ID	MW	MolForm	CAS#	Qual
1	5	2-Pentanone, 4-hydroxy-4-methyl-	116	C6H12O2	000123-42-2	56
2		2-Pentanone, 4-hydroxy-4-methyl-	116	C6H12O2	000123-42-2	50
3		2-Pentanone, 4-hydroxy-4-methyl-	116	C6H12O2	000123-42-2	38
4		1,3-Dioxolane-2-methanol, 2,4-di...	132	C6H12O3	053951-43-2	25
5		Acetic acid, cyano-, 1,1-dimethy...	141	C7H11NO2	001116-98-9	17



Data Path : Z:\SVOASRV\HPCHEM1\BNA P\DATA\BP022120\
 Data File : BP001850.D
 Acq On : 22 Feb 2020 06:51
 Operator : CG/JU
 Sample : L1506-24
 Misc :
 ALS Vial : 30 Sample Multiplier: 1

Instrument :
 BNA_P
 ClientSampleId :
 TP-32-33-COMP

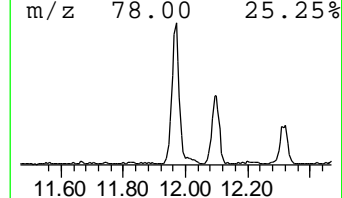
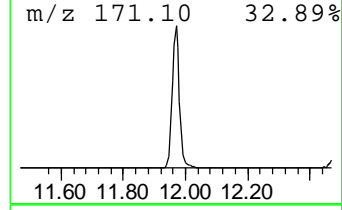
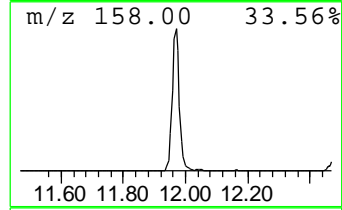
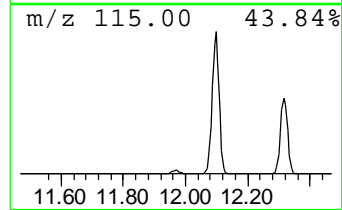
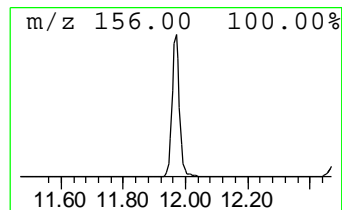
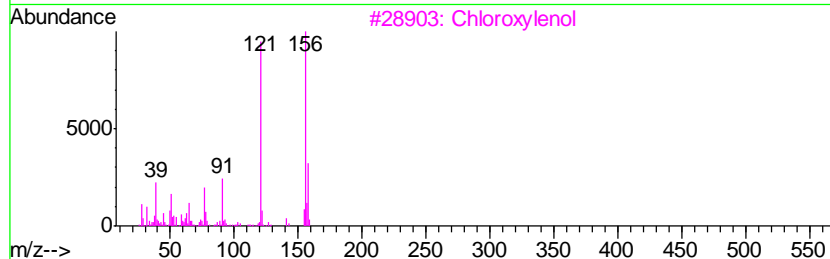
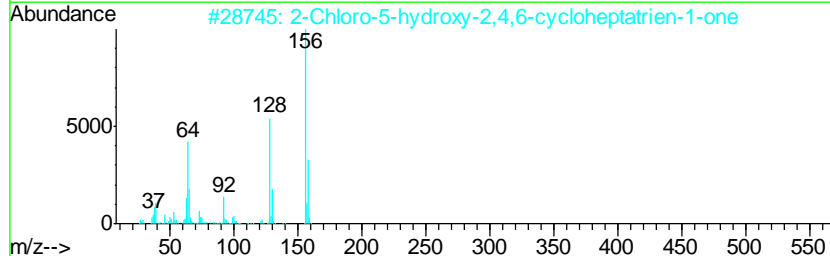
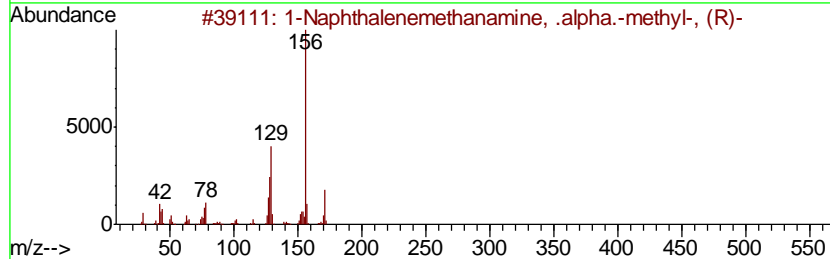
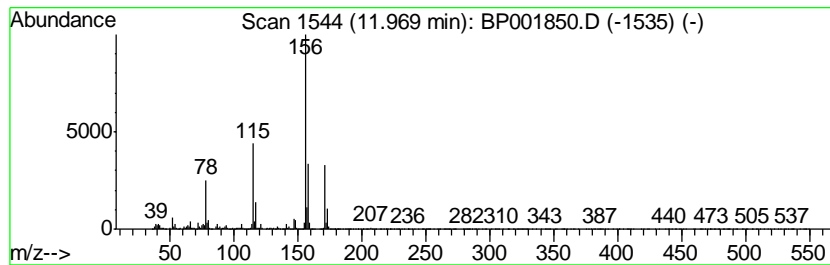
Quant Method : Z:\SVOASRV\HPCHEM1\BNA_P\METHODS\SOM-EPA-BP021820MA.M
 Quant Title : SVOA CALIBRATION

TIC Library : C:\DATABASE\NIST11.L
 TIC Integration Parameters: LSCINT.P

 Peak Number 3 unknown-01 Concentration Rank 13

R.T.	EstConc	Area	Relative to ISTD	R.T.
11.97	2.01 ng/ul	354933	Naphthalene-d8	10.43

Hit#	of	Tentative ID	MW	MolForm	CAS#	Qual
1	5	1-Naphthalenemethanamine, .alpha...	171	C12H13N	003886-70-2	43
2		2-Chloro-5-hydroxy-2,4,6-cyclohe...	156	C7H5ClO2	007009-16-7	43
3		Chloroxylenol	156	C8H9ClO	000088-04-0	32
4		Bicyclo[3.2.0]hept-2-ene, 4-isop...	171	C12H13N	1000217-15-6	32
5		3,5-Xylenol, 4-chloro-, acetate	198	C10H11ClO2	022012-58-4	32



Data Path : Z:\SVOASRV\HPCHEM1\BNA P\DATA\BP022120\
 Data File : BP001850.D
 Acq On : 22 Feb 2020 06:51
 Operator : CG/JU
 Sample : L1506-24
 Misc :
 ALS Vial : 30 Sample Multiplier: 1

Instrument :
 BNA_P
 ClientSampleId :
 TP-32-33-COMP

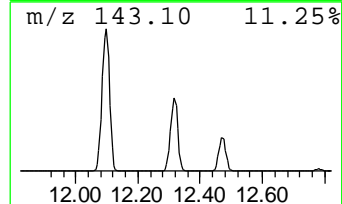
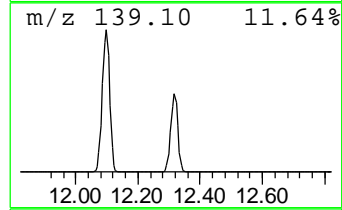
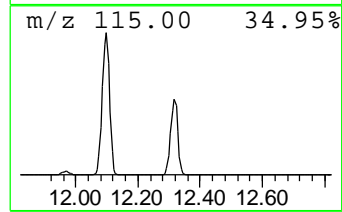
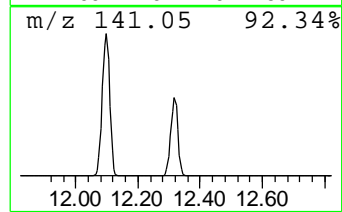
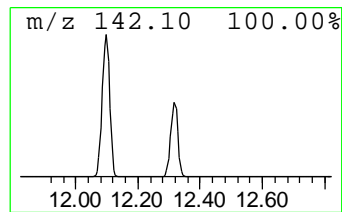
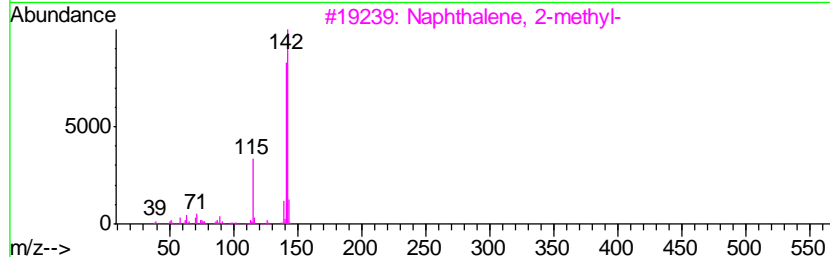
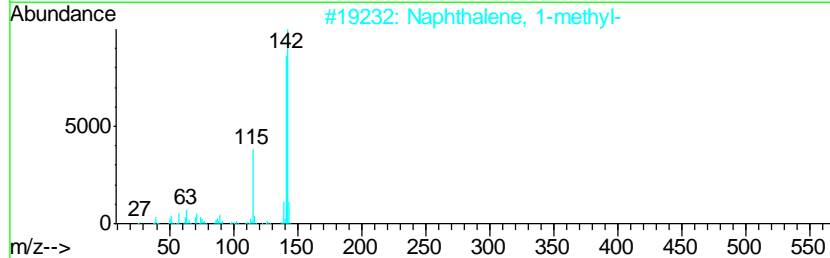
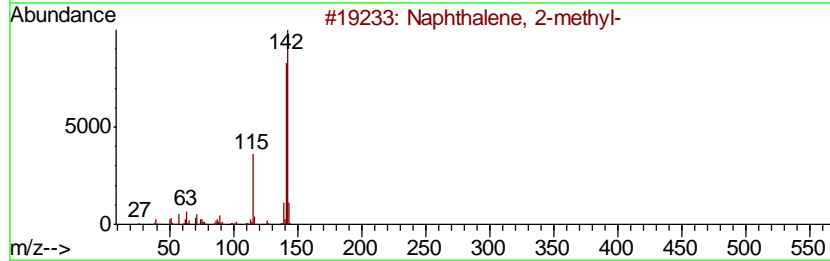
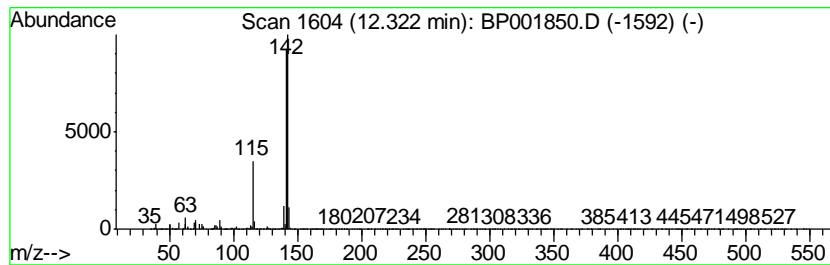
Quant Method : Z:\SVOASRV\HPCHEM1\BNA_P\METHODS\SOM-EPA-BP021820MA.M
 Quant Title : SVOA CALIBRATION

TIC Library : C:\DATABASE\NIST11.L
 TIC Integration Parameters: LSCINT.P

 Peak Number 4 Naphthalene, 1-methyl- Concentration Rank 1

R.T.	EstConc	Area	Relative to ISTD	R.T.
12.32	39.18 ng/ul	6913210	Naphthalene-d8	10.43

Hit#	of	Tentative ID	MW	MolForm	CAS#	Qual
1	5	Naphthalene, 2-methyl-	142	C11H10	000091-57-6	96
2		Naphthalene, 1-methyl-	142	C11H10	000090-12-0	96
3		Naphthalene, 2-methyl-	142	C11H10	000091-57-6	96
4		Naphthalene, 1-methyl-	142	C11H10	000090-12-0	94
5		Naphthalene, 2-methyl-	142	C11H10	000091-57-6	94



Data Path : Z:\SVOASRV\HPCHEM1\BNA P\DATA\BP022120\
 Data File : BP001850.D
 Acq On : 22 Feb 2020 06:51
 Operator : CG/JU
 Sample : L1506-24
 Misc :
 ALS Vial : 30 Sample Multiplier: 1

Instrument :
 BNA_P
 ClientSampled :
 TP-32-33-COMP

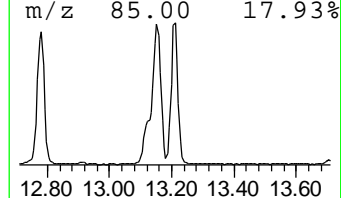
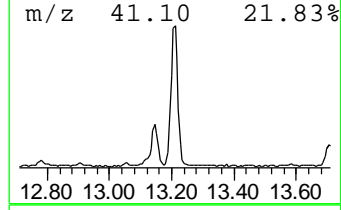
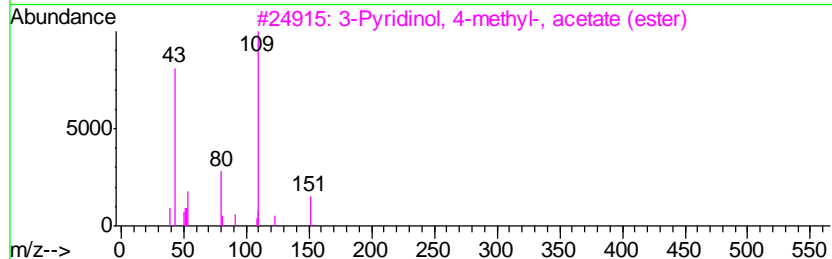
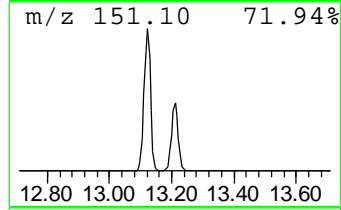
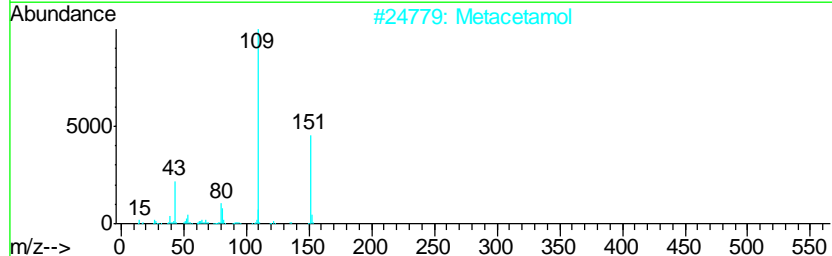
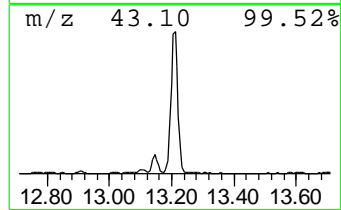
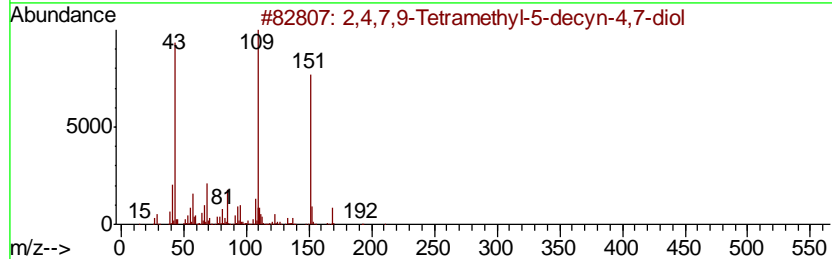
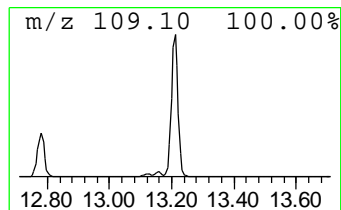
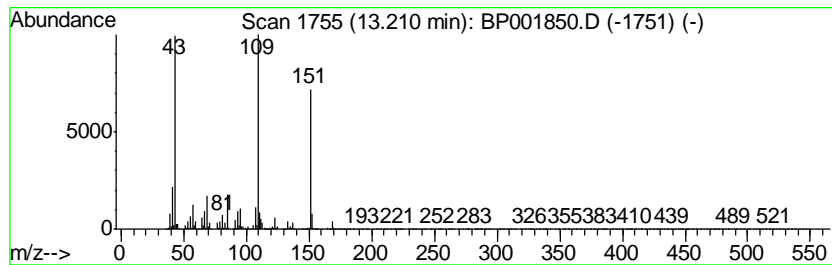
Quant Method : Z:\SVOASRV\HPCHEM1\BNA_P\METHODS\SOM-EPA-BP021820MA.M
 Quant Title : SVOA CALIBRATION

TIC Library : C:\DATABASE\NIST11.L
 TIC Integration Parameters: LSCINT.P

 Peak Number 5 2,4,7,9-Tetramethyl-5-decyn... Concentration Rank 8

R.T.	EstConc	Area	Relative to ISTD	R.T.
13.21	5.40 ng/ul	1254690	Acenaphthene-d10	14.29

Hit#	of	Tentative ID	MW	MolForm	CAS#	Qual
1	5	2,4,7,9-Tetramethyl-5-decyn-4,7-...	226	C14H26O2	000126-86-3	91
2		Metacetamol	151	C8H9NO2	000621-42-1	58
3		3-Pyridinol, 4-methyl-, acetate ...	151	C8H9NO2	001006-96-8	42
4		2-(1-Cyclopent-1-enyl-1-methyl-1-ethoxy)ethane	192	C13H20O	1000190-57-4	38
5		Ethanone, 1-(1,3-dimethyl-3-cyclopentyl)ethane	152	C10H16O	051733-68-7	38



Data Path : Z:\SVOASRV\HPCHEM1\BNA P\DATA\BP022120\
 Data File : BP001850.D
 Acq On : 22 Feb 2020 06:51
 Operator : CG/JU
 Sample : L1506-24
 Misc :
 ALS Vial : 30 Sample Multiplier: 1

Instrument :
 BNA_P
 ClientSampleId :
 TP-32-33-COMP

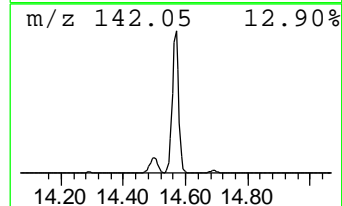
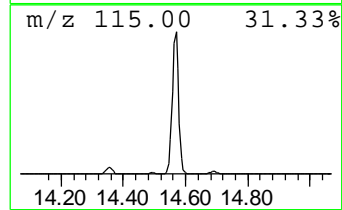
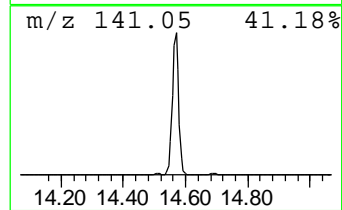
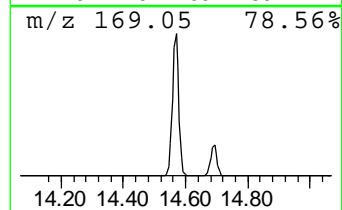
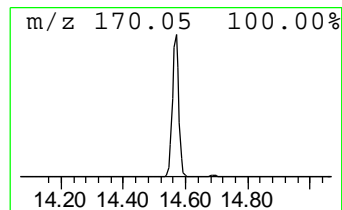
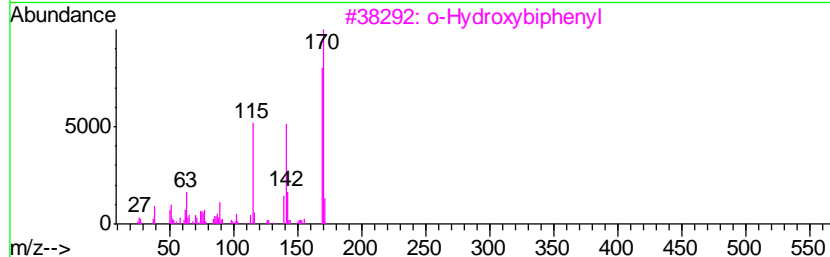
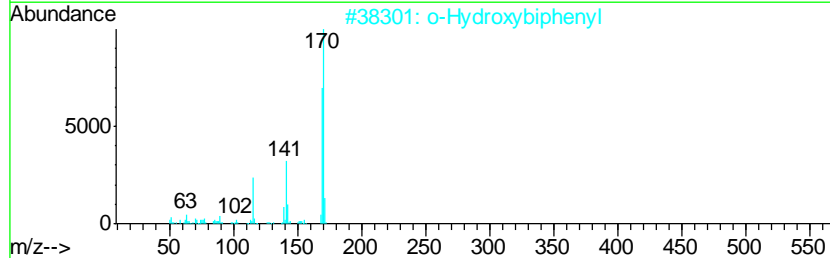
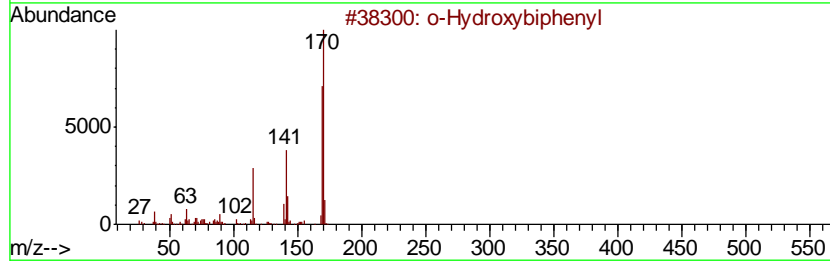
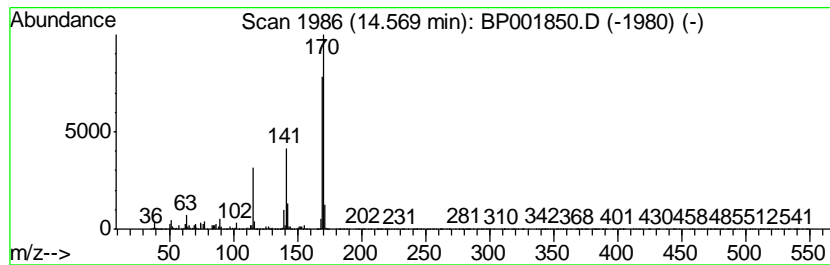
Quant Method : Z:\SVOASRV\HPCHEM1\BNA_P\METHODS\SOM-EPA-BP021820MA.M
 Quant Title : SVOA CALIBRATION

TIC Library : C:\DATABASE\NIST11.L
 TIC Integration Parameters: LSCINT.P

 Peak Number 6 o-Hydroxybiphenyl Concentration Rank 2

R.T.	EstConc	Area	Relative to ISTD	R.T.
14.57	27.24 ng/ul	6330780	Acenaphthene-d10	14.29

Hit#	of	Tentative ID	MW	MolForm	CAS#	Qual
1	5	o-Hydroxybiphenyl	170	C12H10O	000090-43-7	97
2		o-Hydroxybiphenyl	170	C12H10O	000090-43-7	96
3		o-Hydroxybiphenyl	170	C12H10O	000090-43-7	96
4		o-Hydroxybiphenyl	170	C12H10O	000090-43-7	94
5		o-Hydroxybiphenyl	170	C12H10O	000090-43-7	87



Data Path : Z:\SVOASRV\HPCHEM1\BNA P\DATA\BP022120\
 Data File : BP001850.D
 Acq On : 22 Feb 2020 06:51
 Operator : CG/JU
 Sample : L1506-24
 Misc :
 ALS Vial : 30 Sample Multiplier: 1

Instrument :
 BNA_P
 ClientSampleId :
 TP-32-33-COMP

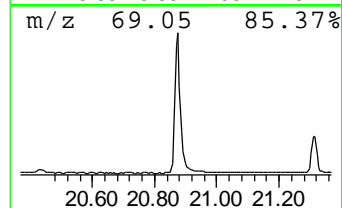
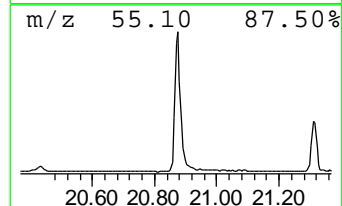
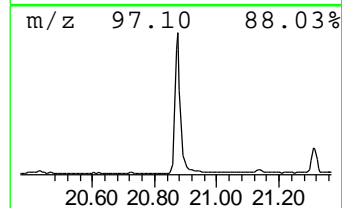
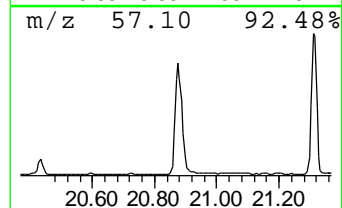
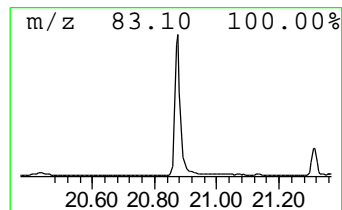
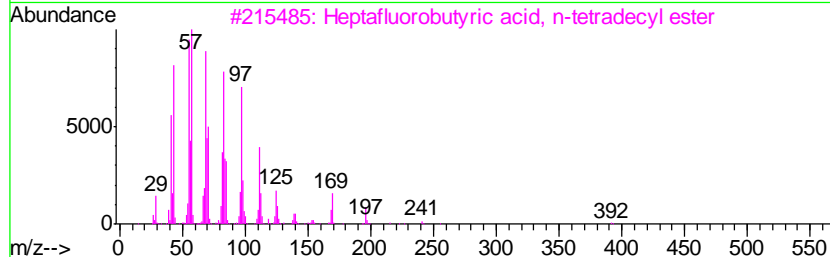
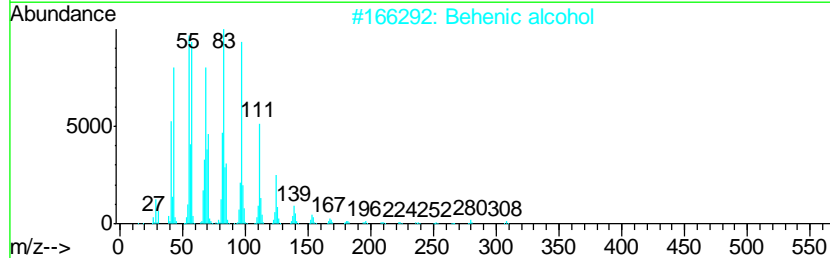
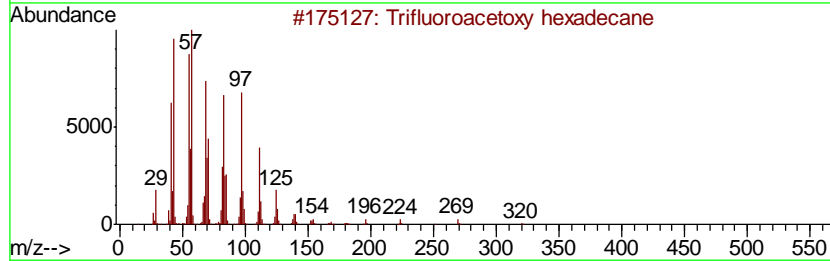
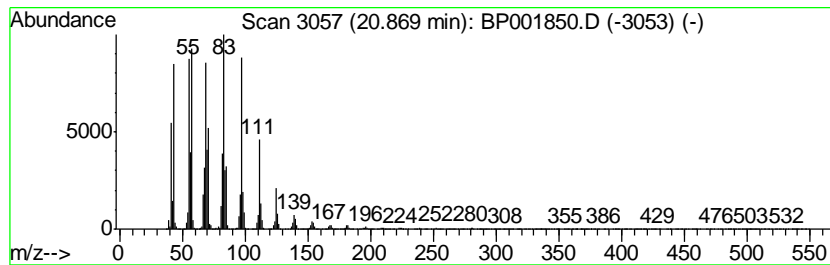
Quant Method : Z:\SVOASRV\HPCHEM1\BNA_P\METHODS\SOM-EPA-BP021820MA.M
 Quant Title : SVOA CALIBRATION

TIC Library : C:\DATABASE\NIST11.L
 TIC Integration Parameters: LSCINT.P

 Peak Number 7 Trifluoroacetoxy hexadecane Concentration Rank 9

R.T.	EstConc	Area	Relative to ISTD	R.T.
20.87	4.42 ng/ul	3876160	Chrysene-d12	21.13

Hit#	of	Tentative ID	MW	MolForm	CAS#	Qual
1	5	Trifluoroacetoxy hexadecane	338	C18H33F3O2	006222-03-3	94
2		Behenic alcohol	326	C22H46O	000661-19-8	94
3		Heptafluorobutyric acid, n-tetra...	410	C18H29F7O2	007365-36-8	94
4		Pentafluoropropionic acid, tetra...	360	C17H29F5O2	006222-06-6	94
5		Trifluoroacetic acid, pentadecyl...	324	C17H31F3O2	959010-23-2	94



Data Path : Z:\SVOASRV\HPCHEM1\BNA P\DATA\BP022120\
 Data File : BP001850.D
 Acq On : 22 Feb 2020 06:51
 Operator : CG/JU
 Sample : L1506-24
 Misc :
 ALS Vial : 30 Sample Multiplier: 1

Instrument :
 BNA_P
 ClientSampled :
 TP-32-33-COMP

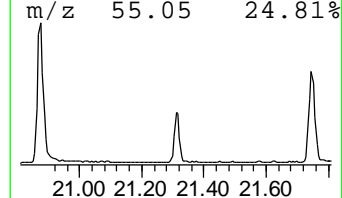
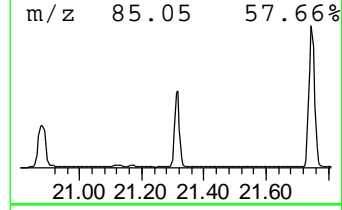
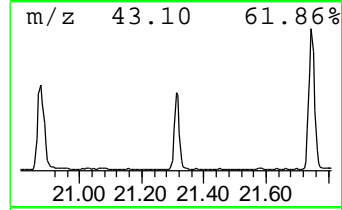
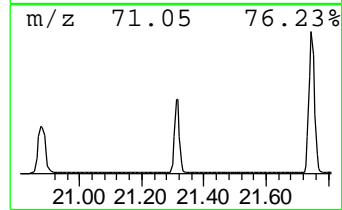
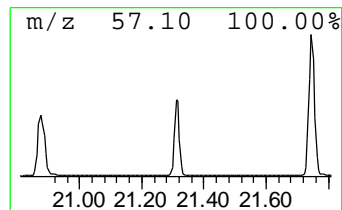
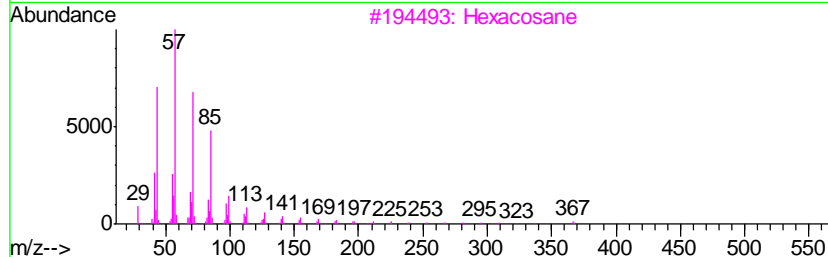
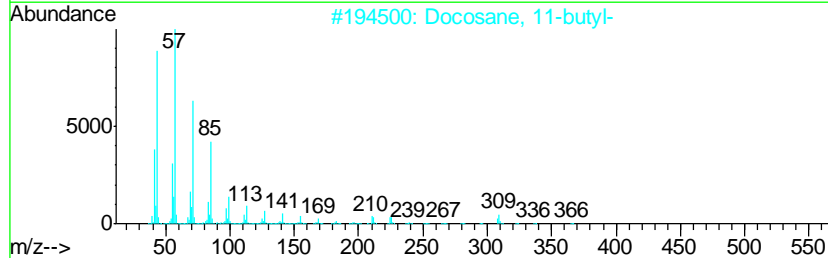
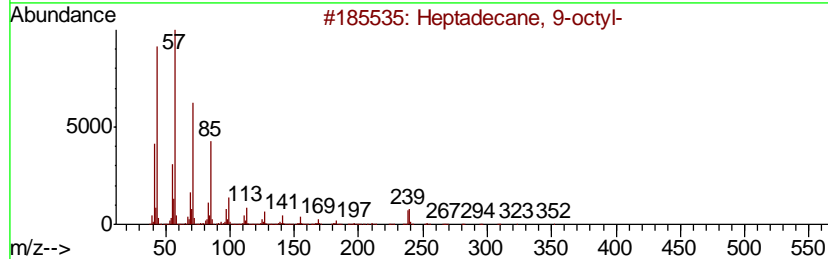
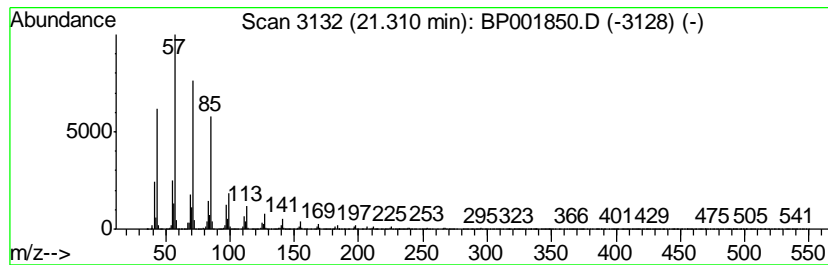
Quant Method : Z:\SVOASRV\HPCHEM1\BNA_P\METHODS\SOM-EPA-BP021820MA.M
 Quant Title : SVOA CALIBRATION

TIC Library : C:\DATABASE\NIST11.L
 TIC Integration Parameters: LSCINT.P

 Peak Number 8 (DEL) Alkane: Straight-Chai... Concentration Rank 12

R.T.	EstConc	Area	Relative to ISTD	R.T.
21.31	2.16 ng/ul	1897490	Chrysene-d12	21.13

Hit#	of	Tentative ID	MW	MolForm	CAS#	Qual
1	5	Heptadecane, 9-octyl-	352	C25H52	007225-64-1	97
2		Docosane, 11-butyl-	366	C26H54	013475-76-8	95
3		Hexacosane	366	C26H54	000630-01-3	94
4		Hexadecane, 1-iodo-	352	C16H33I	000544-77-4	94
5		Pentacosane	352	C25H52	000629-99-2	93



Data Path : Z:\SVOASRV\HPCHEM1\BNA P\DATA\BP022120\
 Data File : BP001850.D
 Acq On : 22 Feb 2020 06:51
 Operator : CG/JU
 Sample : L1506-24
 Misc :
 ALS Vial : 30 Sample Multiplier: 1

Instrument :
 BNA_P
 ClientSampleID :
 TP-32-33-COMP

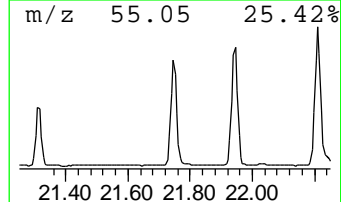
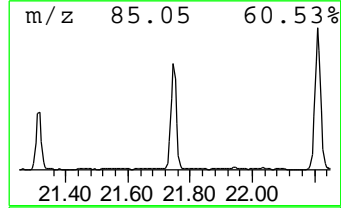
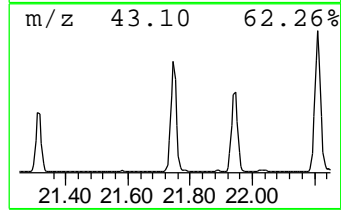
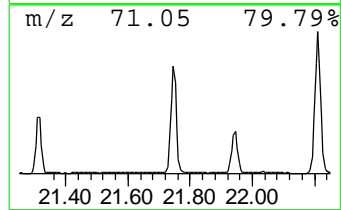
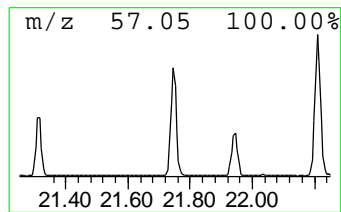
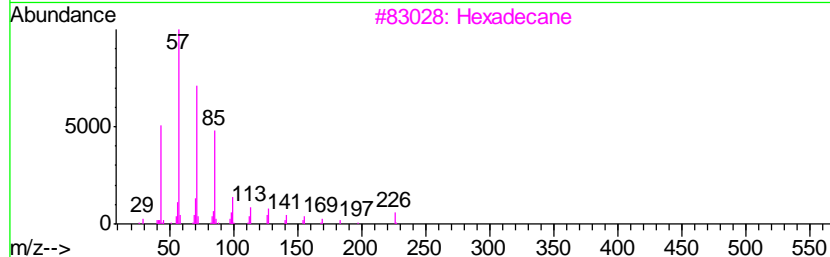
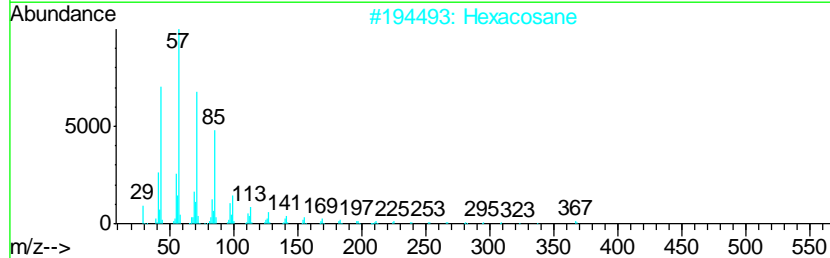
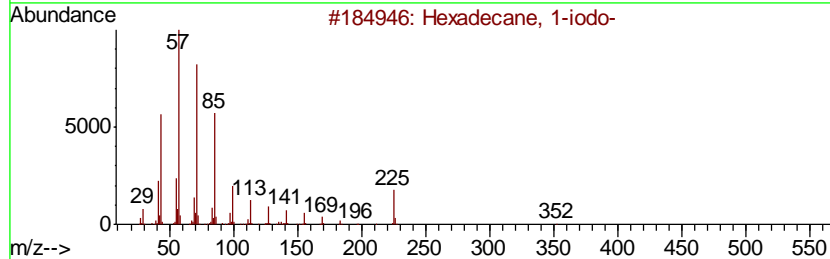
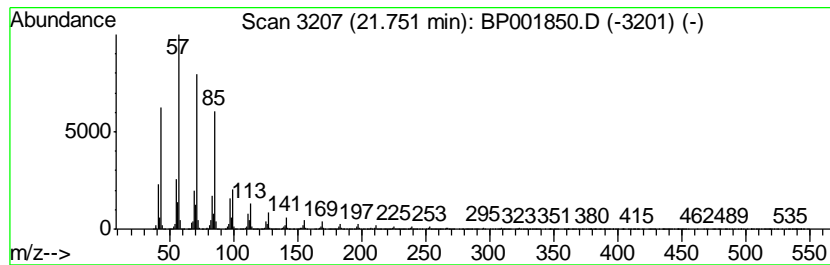
Quant Method : Z:\SVOASRV\HPCHEM1\BNA_P\METHODS\SOM-EPA-BP021820MA.M
 Quant Title : SVOA CALIBRATION

TIC Library : C:\DATABASE\NIST11.L
 TIC Integration Parameters: LSCINT.P

 Peak Number 9 Hexadecane, 1-iodo- Concentration Rank 10

R.T.	EstConc	Area	Relative to ISTD	R.T.
21.75	4.42 ng/ul	3875950	Chrysene-d12	21.13

Hit#	of	Tentative ID	MW	MolForm	CAS#	Qual
1	5	Hexadecane, 1-iodo-	352	C16H33I	000544-77-4	95
2		Hexacosane	366	C26H54	000630-01-3	94
3		Hexadecane	226	C16H34	000544-76-3	93
4		Heptadecane, 9-octyl-	352	C25H52	007225-64-1	91
5		Heptadecane, 9-hexyl-	324	C23H48	055124-79-3	91



Data Path : Z:\SVOASRV\HPCHEM1\BNA P\DATA\BP022120\
 Data File : BP001850.D
 Acq On : 22 Feb 2020 06:51
 Operator : CG/JU
 Sample : L1506-24
 Misc :
 ALS Vial : 30 Sample Multiplier: 1

Instrument :
 BNA_P
 ClientSampled :
 TP-32-33-COMP

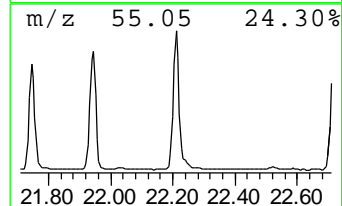
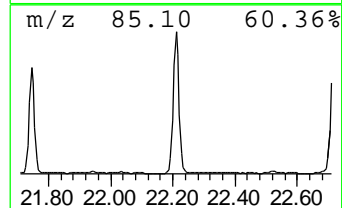
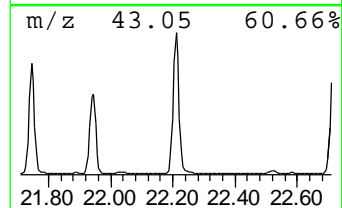
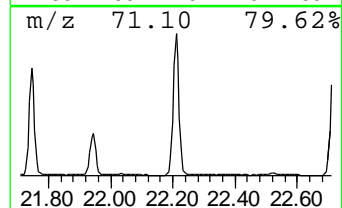
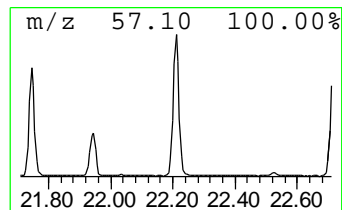
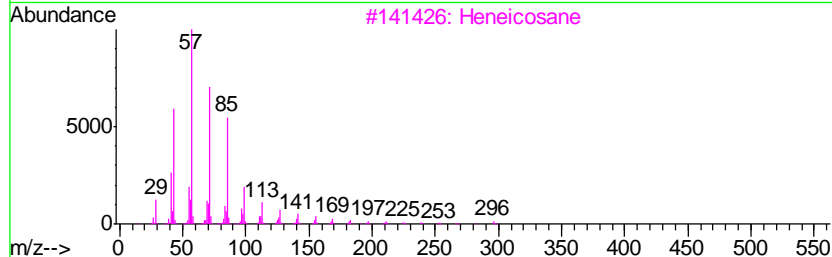
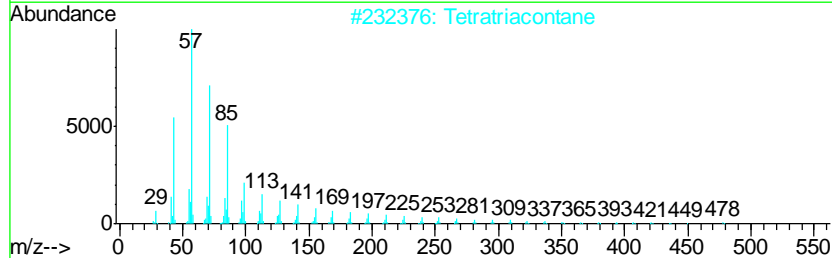
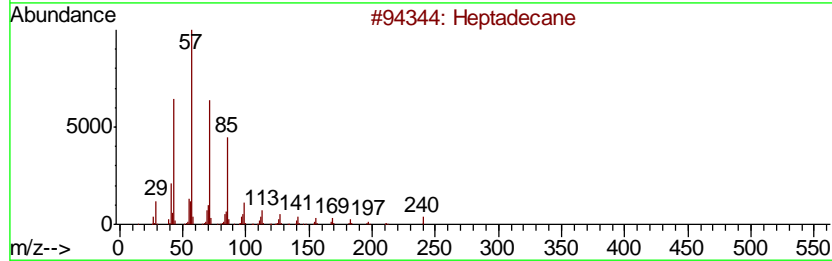
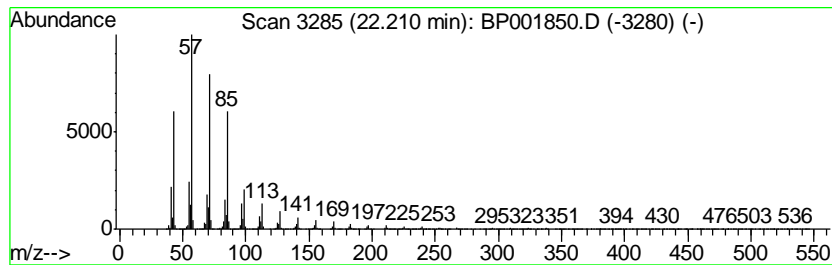
Quant Method : Z:\SVOASRV\HPCHEM1\BNA_P\METHODS\SOM-EPA-BP021820MA.M
 Quant Title : SVOA CALIBRATION

TIC Library : C:\DATABASE\NIST11.L
 TIC Integration Parameters: LSCINT.P

 Peak Number 10 (DEL) Alkane: Straight-Chai... Concentration Rank 7

R.T.	EstConc	Area	Relative to ISTD	R.T.
22.21	6.07 ng/ul	5324890	Chrysene-d12	21.13

Hit#	of	Tentative ID	MW	MolForm	CAS#	Qual
1	5	Heptadecane	240	C17H36	000629-78-7	94
2		Tetratriacontane	479	C34H70	014167-59-0	91
3		Heneicosane	296	C21H44	000629-94-7	91
4		2-methyloctacosane	408	C29H60	1000376-72-8	91
5		Heptadecane, 9-octyl-	352	C25H52	007225-64-1	91



Data Path : Z:\SVOASRV\HPCHEM1\BNA P\DATA\BP022120\
 Data File : BP001850.D
 Acq On : 22 Feb 2020 06:51
 Operator : CG/JU
 Sample : L1506-24
 Misc :
 ALS Vial : 30 Sample Multiplier: 1

Instrument :
 BNA_P
 ClientSampleId :
 TP-32-33-COMP

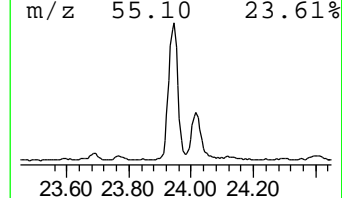
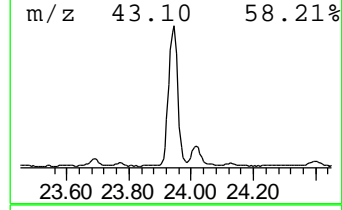
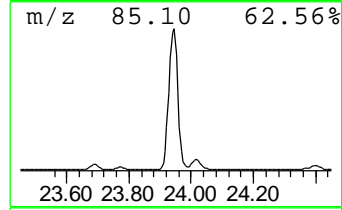
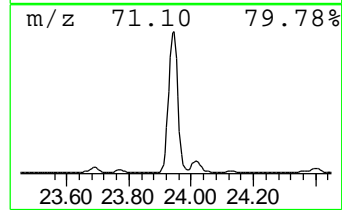
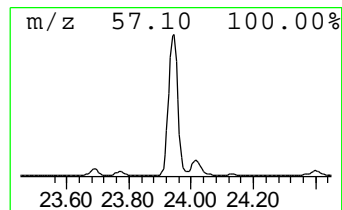
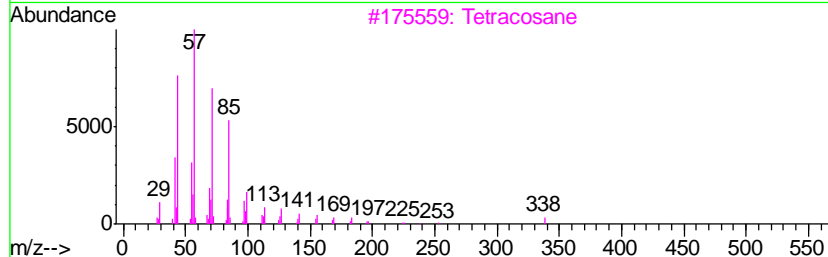
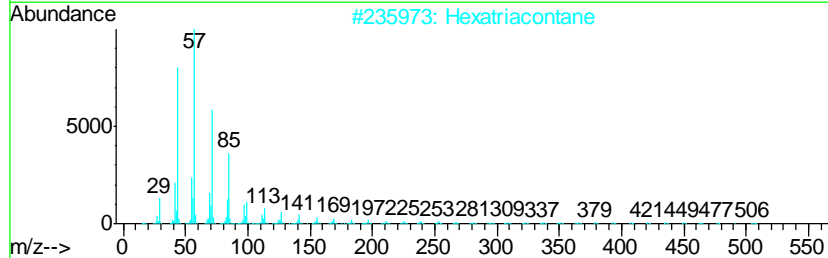
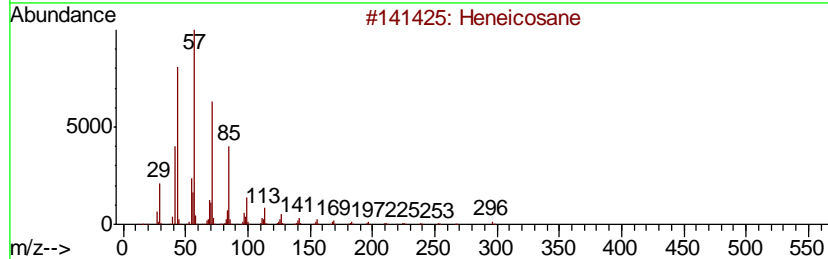
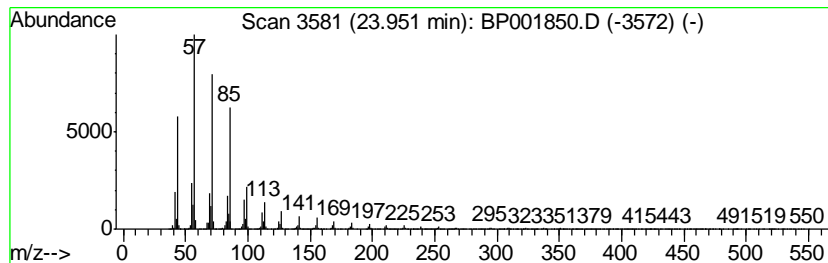
Quant Method : Z:\SVOASRV\HPCHEM1\BNA_P\METHODS\SOM-EPA-BP021820MA.M
 Quant Title : SVOA CALIBRATION

TIC Library : C:\DATABASE\NIST11.L
 TIC Integration Parameters: LSCINT.P

 Peak Number 11 (DEL) Alkane: Straight-Chai... Concentration Rank 3

R.T.	EstConc	Area	Relative to ISTD	R.T.
23.95	14.67 ng/ul	5141830	Perylene-d12	23.35

Hit#	of	Tentative ID	MW	MolForm	CAS#	Qual
1	5	Heneicosane	296	C21H44	000629-94-7	98
2		Hexatriacontane	507	C36H74	000630-06-8	93
3		Tetracosane	338	C24H50	000646-31-1	91
4		Heneicosane	296	C21H44	000629-94-7	91
5		Tetratetracontane	619	C44H90	007098-22-8	91



Data Path : Z:\SVOASRV\HPCHEM1\BNA P\DATA\BP022120\
 Data File : BP001850.D
 Acq On : 22 Feb 2020 06:51
 Operator : CG/JU
 Sample : L1506-24
 Misc :
 ALS Vial : 30 Sample Multiplier: 1

Instrument :
 BNA_P
 ClientSampleId :
 TP-32-33-COMP

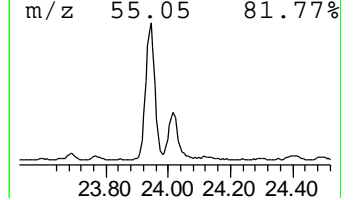
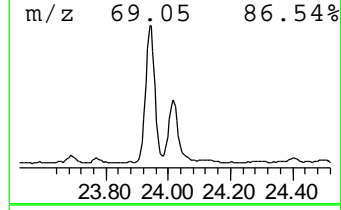
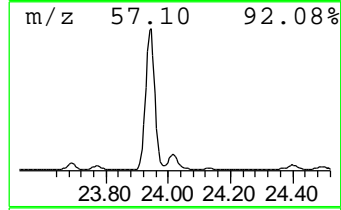
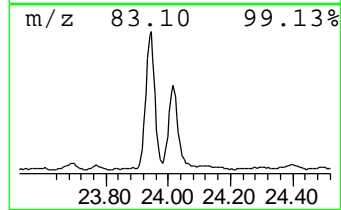
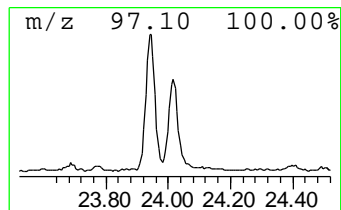
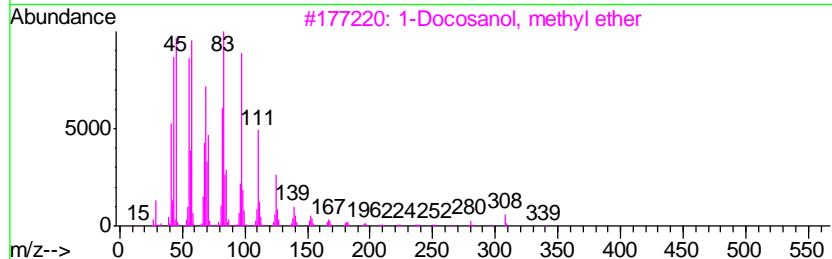
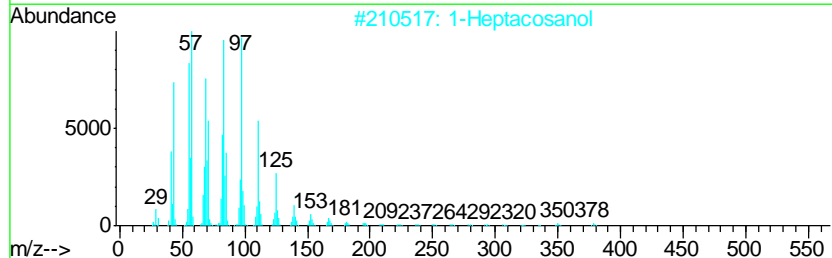
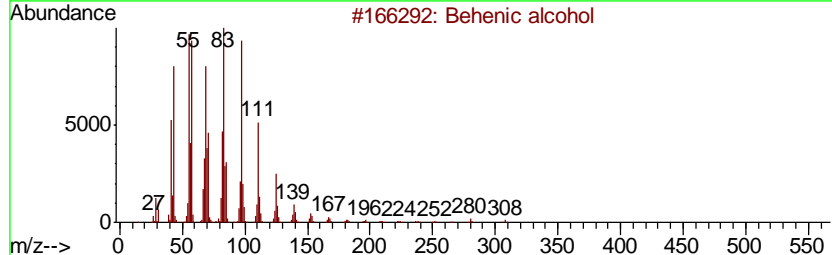
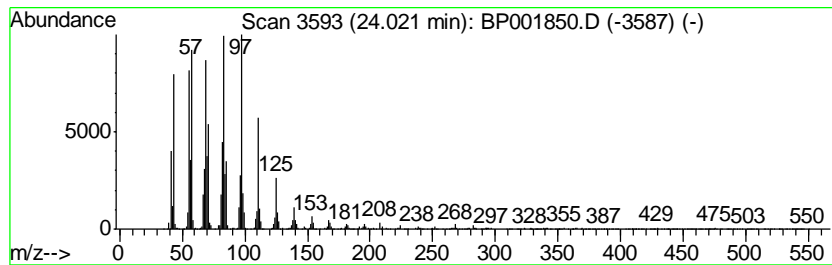
Quant Method : Z:\SVOASRV\HPCHEM1\BNA_P\METHODS\SOM-EPA-BP021820MA.M
 Quant Title : SVOA CALIBRATION

TIC Library : C:\DATABASE\NIST11.L
 TIC Integration Parameters: LSCINT.P

 Peak Number 12 Behenic alcohol Concentration Rank 11

R.T.	EstConc	Area	Relative to ISTD	R.T.
24.02	3.03 ng/ul	1060530	Perylene-d12	23.35

Hit#	of	Tentative ID	MW	MolForm	CAS#	Qual
1	5	Behenic alcohol	326	C22H46O	000661-19-8	95
2		1-Heptacosanol	396	C27H56O	002004-39-9	95
3		1-Docosanol, methyl ether	340	C23H48O	1000333-91-9	95
4		n-Tetracosanol-1	354	C24H50O	000506-51-4	94
5		1-Heneicosanol	312	C21H44O	015594-90-8	91



Data Path : Z:\SVOASRV\HPCHEM1\BNA P\DATA\BP022120\
 Data File : BP001850.D
 Acq On : 22 Feb 2020 06:51
 Operator : CG/JU
 Sample : L1506-24
 Misc :
 ALS Vial : 30 Sample Multiplier: 1

Instrument :
 BNA_P
 ClientSampleId :
 TP-32-33-COMP

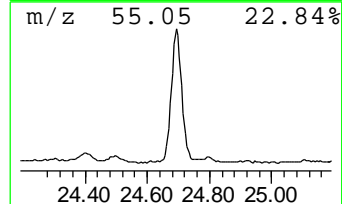
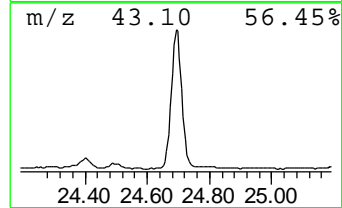
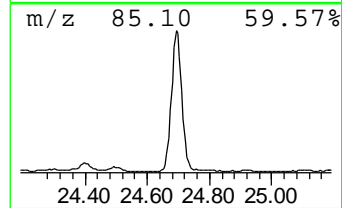
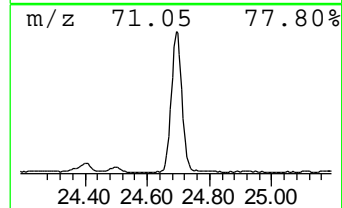
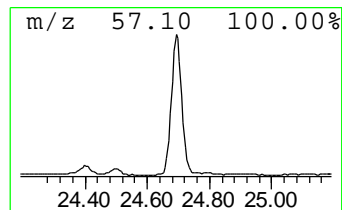
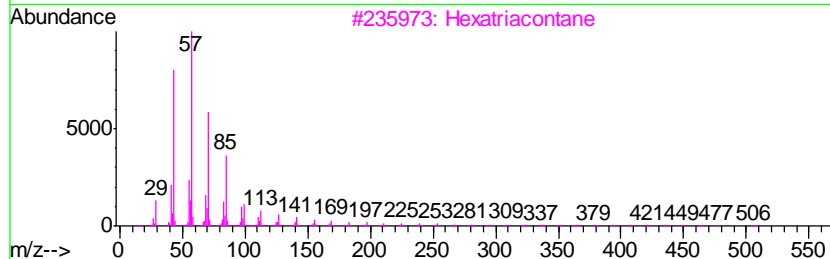
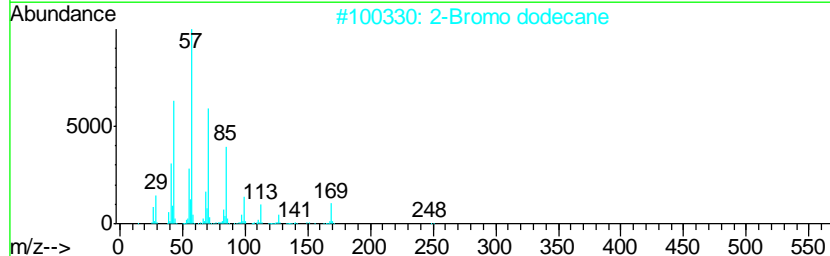
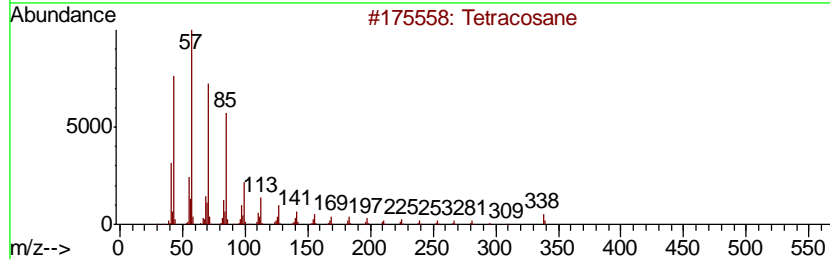
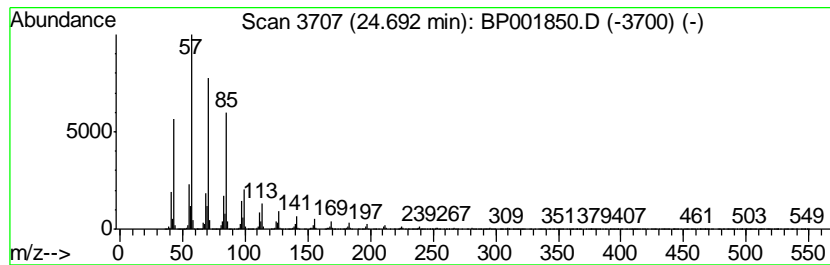
Quant Method : Z:\SVOASRV\HPCHEM1\BNA_P\METHODS\SOM-EPA-BP021820MA.M
 Quant Title : SVOA CALIBRATION

TIC Library : C:\DATABASE\NIST11.L
 TIC Integration Parameters: LSCINT.P

 Peak Number 13 (DEL) Alkane: Straight-Chai... Concentration Rank 5

R.T.	EstConc	Area	Relative to ISTD	R.T.
24.69	8.14 ng/ul	2854250	Perylene-d12	23.35

Hit#	of	Tentative ID	MW	MolForm	CAS#	Qual
1	5	Tetracosane	338	C24H50	000646-31-1	98
2		2-Bromo dodecane	248	C12H25Br	013187-99-0	95
3		Hexatriacontane	507	C36H74	000630-06-8	95
4		Heptadecane, 9-octyl-	352	C25H52	007225-64-1	95
5		Docosane, 7-hexyl-	394	C28H58	055373-86-9	93



Data Path : Z:\SVOASRV\HPCHEM1\BNA_P\DATA\BP022120\
 Data File : BP001850.D
 Acq On : 22 Feb 2020 06:51
 Operator : CG/JU
 Sample : L1506-24
 Misc :
 ALS Vial : 30 Sample Multiplier: 1

Instrument :
 BNA_P
 ClientSampleId :
 TP-32-33-COMP

Quant Method : Z:\SVOASRV\HPCHEM1\BNA_P\METHODS\SOM-EPA-BP021820MA.M
 Quant Title : SVOA CALIBRATION

TIC Library : C:\DATABASE\NIST11.L
 TIC Integration Parameters: LSCINT.P

TIC Top Hit name	RT	EstConc	Units	Response	--Internal Standard--			
					#	RT	Resp	Conc
Butane, 2-methoxy...	2.92	7.5	ng/ul	814863	1	7.65	2162100	20.0
2-Pentanone, 4-hy...	4.80	11.6	ng/ul	1256150	1	7.65	2162100	20.0
unknown-01	11.97	2.0	ng/ul	354933	2	10.43	3528690	20.0
Naphthalene, 1-me...	12.32	39.2	ng/ul	6913210	2	10.43	3528690	20.0
2,4,7,9-Tetrameth...	13.21	5.4	ng/ul	1254690	3	14.29	4647350	20.0
o-Hydroxybiphenyl	14.57	27.2	ng/ul	6330780	3	14.29	4647350	20.0
Trifluoroacetoxy ...	20.87	4.4	ng/ul	3876160	5	21.13	17541100	20.0
(DEL) Alkane: Str...	21.31	2.2	ng/ul	1897490	5	21.13	17541100	20.0
Hexadecane, 1-iodo-	21.75	4.4	ng/ul	3875950	5	21.13	17541100	20.0
(DEL) Alkane: Str...	22.21	6.1	ng/ul	5324890	5	21.13	17541100	20.0
(DEL) Alkane: Str...	23.95	14.7	ng/ul	5141830	6	23.35	7009870	20.0
Behenic alcohol	24.02	3.0	ng/ul	1060530	6	23.35	7009870	20.0
(DEL) Alkane: Str...	24.69	8.1	ng/ul	2854250	6	23.35	7009870	20.0