

Data Path : Z:\SVOASRV\HPCHEM1\BNA_P\DATA\BP030220\
 Data File : BP002039.D
 Acq On : 04 Mar 2020 04:04
 Operator : CG/JU
 Sample : L1616-15
 Misc :
 ALS Vial : 61 Sample Multiplier: 1

Instrument :
 BNA_P
 ClientSampleId :
 DBDQ9

Integration Parameters: LSCINT.P

Integrator: RTE
 Smoothing : OFF
 Sampling : 1
 Start Thrs: 0.2
 Stop Thrs : 0

Filtering: 5
 Min Area: 0.1 % of largest Peak
 Max Peaks: 100
 Peak Location: TOP

If leading or trailing edge < 100 prefer < Baseline drop else tangent >
 Peak separation: 5

Method : Z:\SVOASRV\HPCHEM1\BNA_P\METHODS\SOM-EPA-BP022720MA.M
 Title : SVOA CALIBRATION

Signal : TIC: BP002043.D

peak #	R.T. min	first scan	max scan	last scan	PK TY	peak height	corr. area	corr. % max.	% of total
1	2.917	3	5	25	rVB	1411981	2050368	29.86%	2.932%
2	3.169	44	48	51	rBV	17711	21417	0.31%	0.031%
3	3.811	152	157	161	rBV	12301	18568	0.27%	0.027%
4	3.893	167	171	177	rVB	9192	13915	0.20%	0.020%
5	4.787	318	323	330	rVV	42929	61677	0.90%	0.088%
6	6.816	662	668	680	rBV	1021278	1608107	23.42%	2.299%
7	6.981	689	696	708	rVB	805612	1304251	18.99%	1.865%
8	7.175	721	729	743	rBV	1110422	1741632	25.36%	2.490%
9	7.640	800	808	821	rBV	948793	1494142	21.76%	2.136%
10	8.346	919	928	946	rBV	1327927	2147114	31.27%	3.070%
11	8.781	994	1002	1015	rBV	961201	1550370	22.58%	2.217%
12	9.499	1116	1124	1140	rBV	789019	1285194	18.72%	1.838%
13	10.034	1207	1215	1237	rBV	1354477	2337223	34.04%	3.342%
14	10.410	1268	1279	1294	rBV	1307725	2151912	31.34%	3.077%
15	10.546	1294	1302	1323	rBV	1291797	2290234	33.35%	3.274%
16	13.245	1753	1761	1764	rBV6	4444	9141	0.13%	0.013%
17	13.687	1830	1836	1847	rBV	2336770	3257302	47.43%	4.657%
18	13.963	1875	1883	1898	rBV	2835918	4187916	60.99%	5.988%
19	14.275	1927	1936	1949	rBV	2034789	2964520	43.17%	4.239%
20	14.475	1963	1970	1992	rBV	716403	1232641	17.95%	1.762%
21	14.704	2005	2009	2016	rVB6	11378	18252	0.27%	0.026%
22	15.275	2098	2106	2120	rBV	3524216	5161163	75.16%	7.379%
23	15.392	2120	2126	2141	rVV	653130	921055	13.41%	1.317%
24	15.516	2142	2147	2155	rVB	43329	71502	1.04%	0.102%
25	15.845	2198	2203	2207	rBV4	4449	6872	0.10%	0.010%
26	16.063	2235	2240	2248	rVB	15531	25300	0.37%	0.036%
27	16.710	2346	2350	2354	rVB4	6878	9991	0.15%	0.014%
28	16.816	2362	2368	2375	rBV2	12868	21874	0.32%	0.031%
29	17.028	2396	2404	2414	rBV	2433607	3497440	50.93%	5.000%
30	17.122	2414	2420	2435	rVV2	3784181	5464373	79.57%	7.813%
31	18.369	2628	2632	2640	rVB5	15887	19951	0.29%	0.029%
32	19.263	2779	2784	2790	rBV	36104	52452	0.76%	0.075%
33	19.369	2796	2802	2817	rBV	4867975	6592699	96.00%	9.426%
34	21.121	3094	3100	3111	rBV	3108204	4068443	59.25%	5.817%

Data Path : Z:\SVOASRV\HPCHEM1\BNA P\DATA\BP030220\
Data File : BP002039.D
Acq On : 04 Mar 2020 04:04
Operator : CG/JU
Sample : L1616-15
Misc :
ALS Vial : 61 Sample Multiplier: 1

Instrument :
BNA_P
ClientSampleId :
DBDQ9

Integration Parameters: LSCINT.P
Integrator: RTE
Smoothing : OFF Filtering: 5
Sampling : 1 Min Area: 0.1 % of largest Peak
Start Thrs: 0.2 Max Peaks: 100
Stop Thrs : 0 Peak Location: TOP

If leading or trailing edge < 100 prefer < Baseline drop else tangent >
Peak separation: 5

Method : Z:\SVOASRV\HPCHEM1\BNA_P\METHODS\SOM-EPA-BP022720MA.M
Title : SVOA CALIBRATION

35	21.233	3117	3119	3126	rVB	26629	34199	0.50%	0.049%
36	22.186	3278	3281	3288	rVB2	57365	81025	1.18%	0.116%
37	22.692	3363	3367	3373	rBV	95144	142670	2.08%	0.204%
38	23.192	3444	3452	3460	rBV2	3626525	6867105	100.00%	9.818%
39	23.263	3460	3464	3468	rVV	151823	276190	4.02%	0.395%
40	23.327	3468	3475	3493	rVB2	2249718	4397006	64.03%	6.287%
41	23.910	3569	3574	3582	rVB	128649	241913	3.52%	0.346%
42	24.657	3696	3701	3711	rVB2	111381	242967	3.54%	0.347%

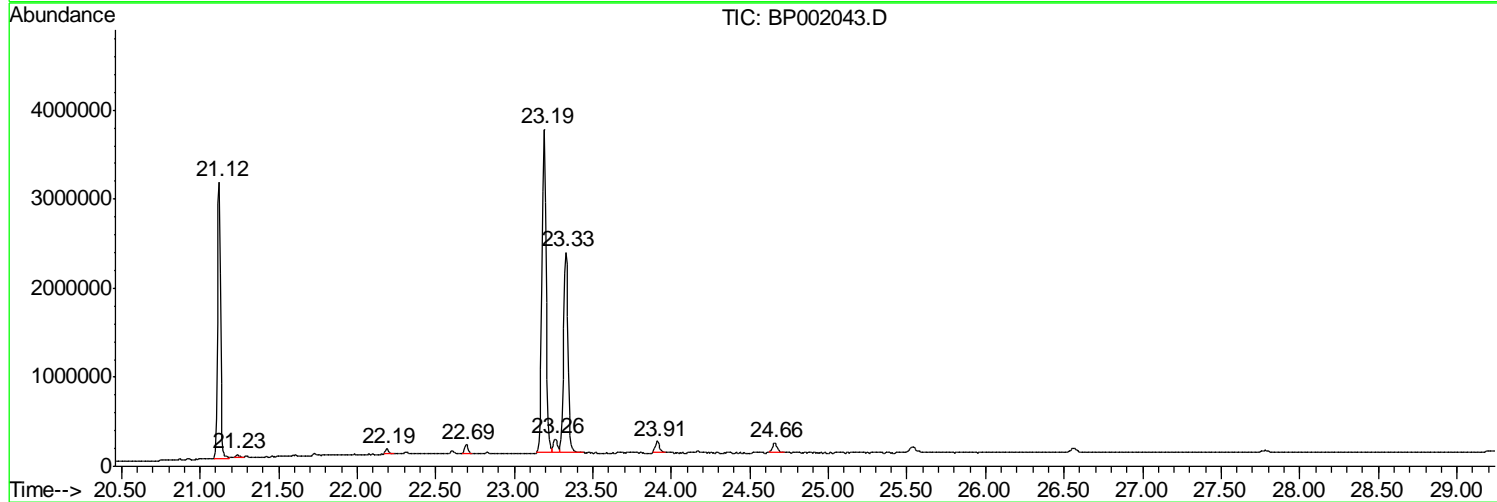
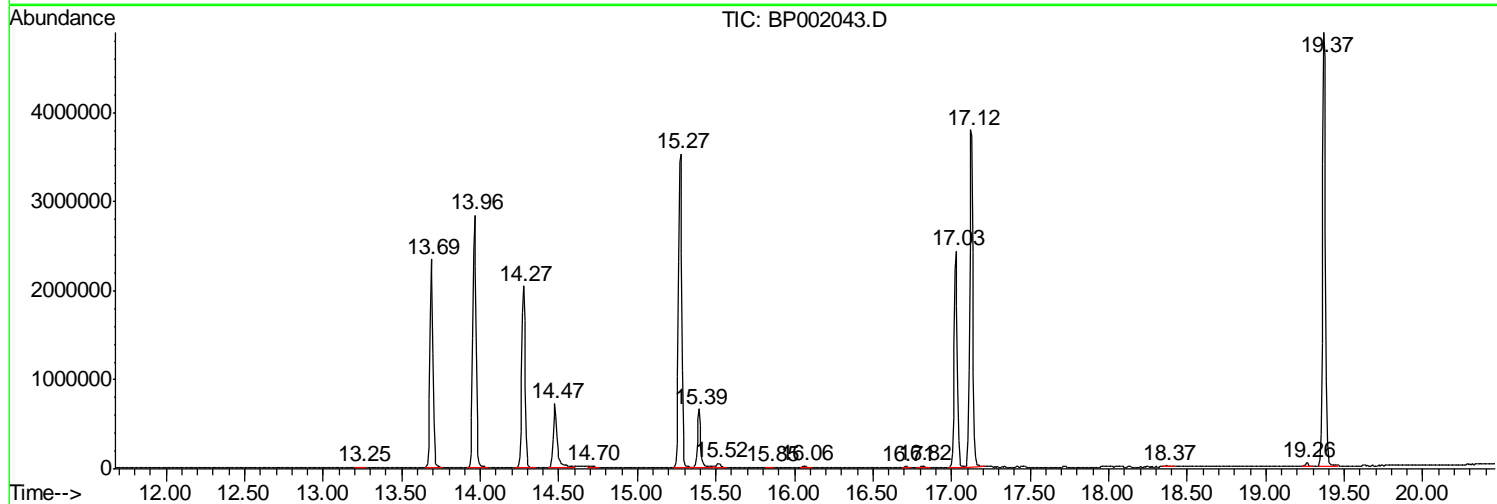
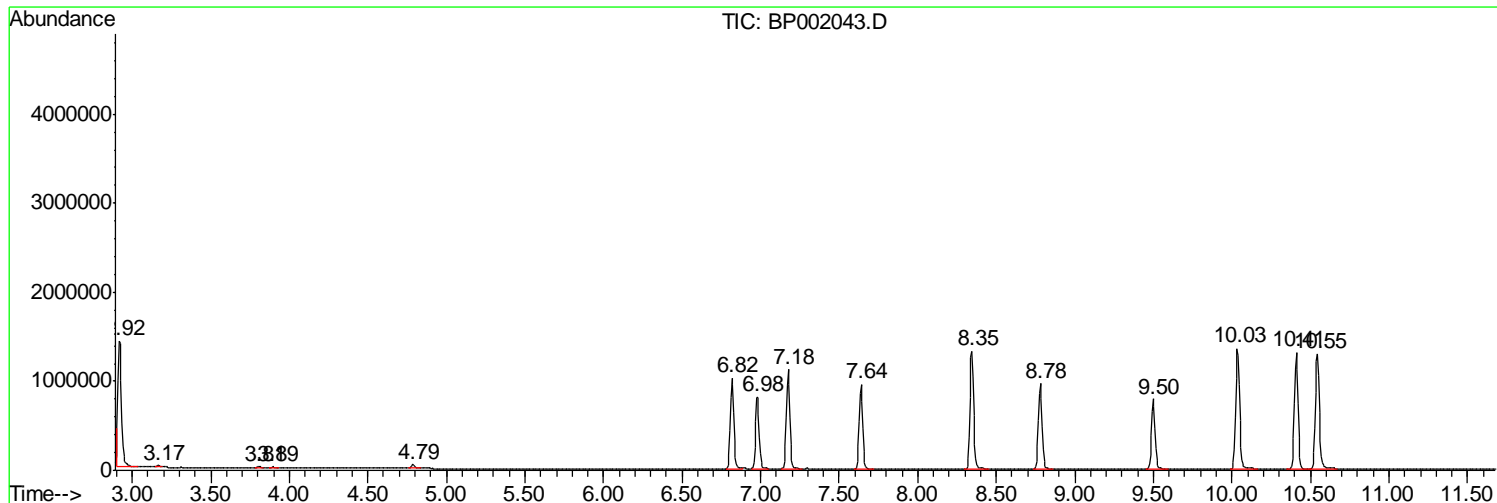
Sum of corrected areas: 69942086

Data Path : Z:\SVOASRV\HPCHEM1\BNA P\DATA\BP030220\
 Data File : BP002039.D
 Acq On : 04 Mar 2020 04:04
 Operator : CG/JU
 Sample : L1616-15
 Misc :
 ALS Vial : 61 Sample Multiplier: 1

Instrument :
 BNA_P
 ClientSampled :
 DBDQ9

Quant Method : Z:\SVOASRV\HPCHEM1\BNA_P\METHODS\SOM-EPA-BP022720MA.M
 Quant Title : SVOA CALIBRATION

TIC Library : C:\DATABASE\NIST11.L
 TIC Integration Parameters: LSCINT.P



Data Path : Z:\SVOASRV\HPCHEM1\BNA P\DATA\BP030220\
 Data File : BP002039.D
 Acq On : 04 Mar 2020 04:04
 Operator : CG/JU
 Sample : L1616-15
 Misc :
 ALS Vial : 61 Sample Multiplier: 1

Instrument :
 BNA_P
 ClientSampleID :
 DBDQ9

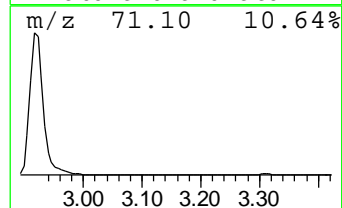
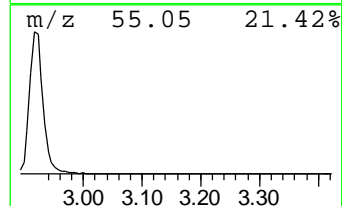
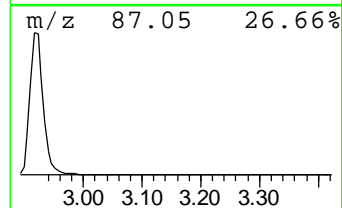
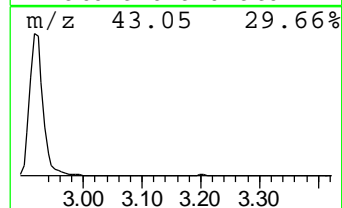
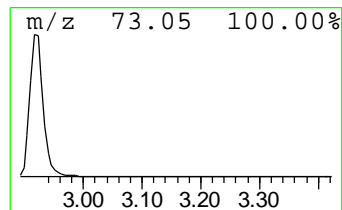
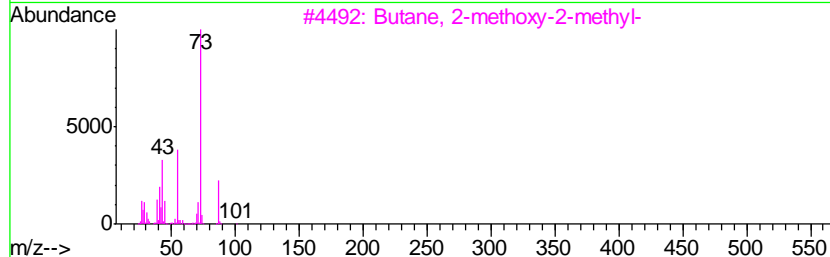
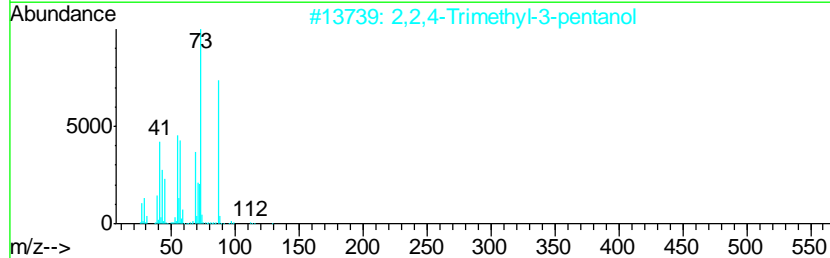
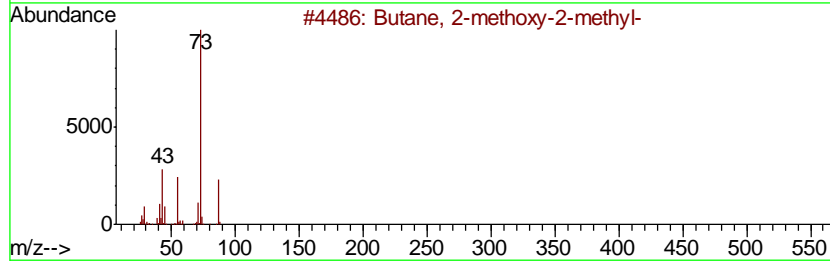
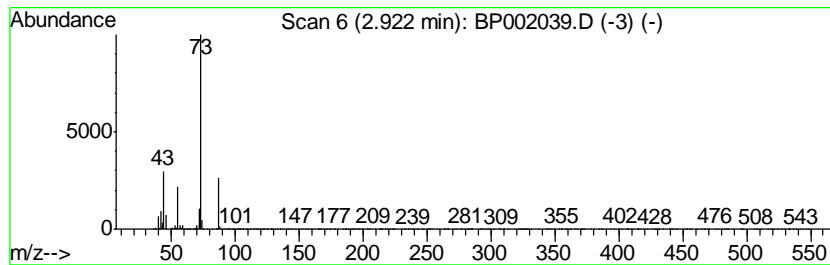
Quant Method : Z:\SVOASRV\HPCHEM1\BNA_P\METHODS\SOM-EPA-BP022720MA.M
 Quant Title : SVOA CALIBRATION

TIC Library : C:\DATABASE\NIST11.L
 TIC Integration Parameters: LSCINT.P

 Peak Number 1 Butane, 2-methoxy-2-methyl- Concentration Rank 1

R.T.	EstConc	Area	Relative to ISTD	R.T.
2.92	27.45 ng/ul	2050370	1,4-Dichlorobenzene-d4	7.64

Hit#	of	Tentative ID	MW	MolForm	CAS#	Qual
1	5	Butane, 2-methoxy-2-methyl-	102	C6H14O	000994-05-8	83
2		2,2,4-Trimethyl-3-pentanol	130	C8H18O	005162-48-1	40
3		Butane, 2-methoxy-2-methyl-	102	C6H14O	000994-05-8	39
4		Pentane, 3-methoxy-	102	C6H14O	036839-67-5	17
5		Acetamide, N-ethyl-	87	C4H9NO	000625-50-3	9



Data Path : Z:\SVOASRV\HPCHEM1\BNA_P\DATA\BP030220\
Data File : BP002039.D
Acq On : 04 Mar 2020 04:04
Operator : CG/JU
Sample : L1616-15
Misc :
ALS Vial : 61 Sample Multiplier: 1

Instrument :
BNA_P
ClientSampleId :
DBDQ9

Quant Method : Z:\SVOASRV\HPCHEM1\BNA_P\METHODS\SOM-EPA-BP022720MA.M
Quant Title : SVOA CALIBRATION

TIC Library : C:\DATABASE\NIST11.L
TIC Integration Parameters: LSCINT.P

TIC Top Hit name	RT	EstConc	Units	Response	--Internal Standard--			
					#	RT	Resp	Conc
Butane, 2-methoxy...	2.92	27.4	ng/ul	2050370	1	7.64	1494140	20.0