

Data Path : Z:\SVOASRV\HPCHEM1\BNA_P\DATA\BP030920\
 Data File : BP002138.D
 Acq On : 10 Mar 2020 01:09
 Operator : CG/JU
 Sample : L1834-11
 Misc :
 ALS Vial : 24 Sample Multiplier: 1

Instrument :
 BNA_P
 ClientSampleId :
 C0DK3

Quant Time: Mar 10 01:49:32 2020
 Quant Method : Z:\SVOASRV\HPCHEM1\BNA_P\METHODS\SOM-EPA-BP022720MA.M
 Quant Title : SVOA CALIBRATION
 QLast Update : Mon Mar 09 15:02:40 2020
 Response via : Initial Calibration

Internal Standards	R.T.	QIon	Response	Conc	Units	Dev(Min)
1) 1,4-Dichlorobenzene-d4	7.63	152	275453	20.00	ng/ul	0.00
18) Naphthalene-d8	10.41	136	1129605	20.00	ng/ul	0.00
36) Acenaphthene-d10	14.27	164	753439	20.00	ng/ul	0.00
62) Phenanthrene-d10	17.02	188	1655050	20.00	ng/ul	0.00
78) Chrysene-d12	21.12	240	1623149	20.00	ng/ul	0.00
86) Perylene-d12	23.32	264	1842045	20.00	ng/ul	0.00

System Monitoring Compounds

3) 1,4-Dioxane-d8	3.16	96	33789	5.27	ng/uL	0.00
5) Phenol-d5	6.82	99	139654	6.65	ng/ul	0.00
7) Bis-(2-Chloroethyl)ether-d	6.97	67	362293	32.56	ng/ul	0.00
9) 2-Chlorophenol-d4	7.17	132	466442	25.66	ng/ul	0.00
13) 4-Methylphenol-d8	8.35	113	286707	16.60	ng/ul	0.00
19) Nitrobenzene-d5	8.78	128	274526	31.64	ng/ul	0.00
22) 2-Nitrophenol-d4	9.50	143	296100	30.33	ng/ul	0.00
26) 2,4-Dichlorophenol-d3	10.03	165	566605	30.13	ng/ul	0.00
29) 4-Chloroaniline-d4	10.55	131	47524	2.31	ng/ul	0.00
44) Dimethylphthalate-d6	13.69	166	2028477	35.57	ng/ul	0.00
47) Acenaphthylene-d8	13.96	160	2374951	34.83	ng/ul	0.00
52) 4-Nitrophenol-d4	14.48	143	41956	3.85	ng/ul	0.00
58) Fluorene-d10	15.27	176	1785898	36.20	ng/ul	0.00
63) 4,6-Dinitro-2-methylphenol	15.39	200	232480	25.48	ng/ul	0.00
71) Anthracene-d10	17.12	188	2853178	38.36	ng/ul	0.00
79) Pyrene-d10	19.37	212	3379022	39.77	ng/ul	0.00
90) Benzo(a)pyrene-d12	23.18	264	3704018	39.30	ng/ul	0.00

Target Compounds

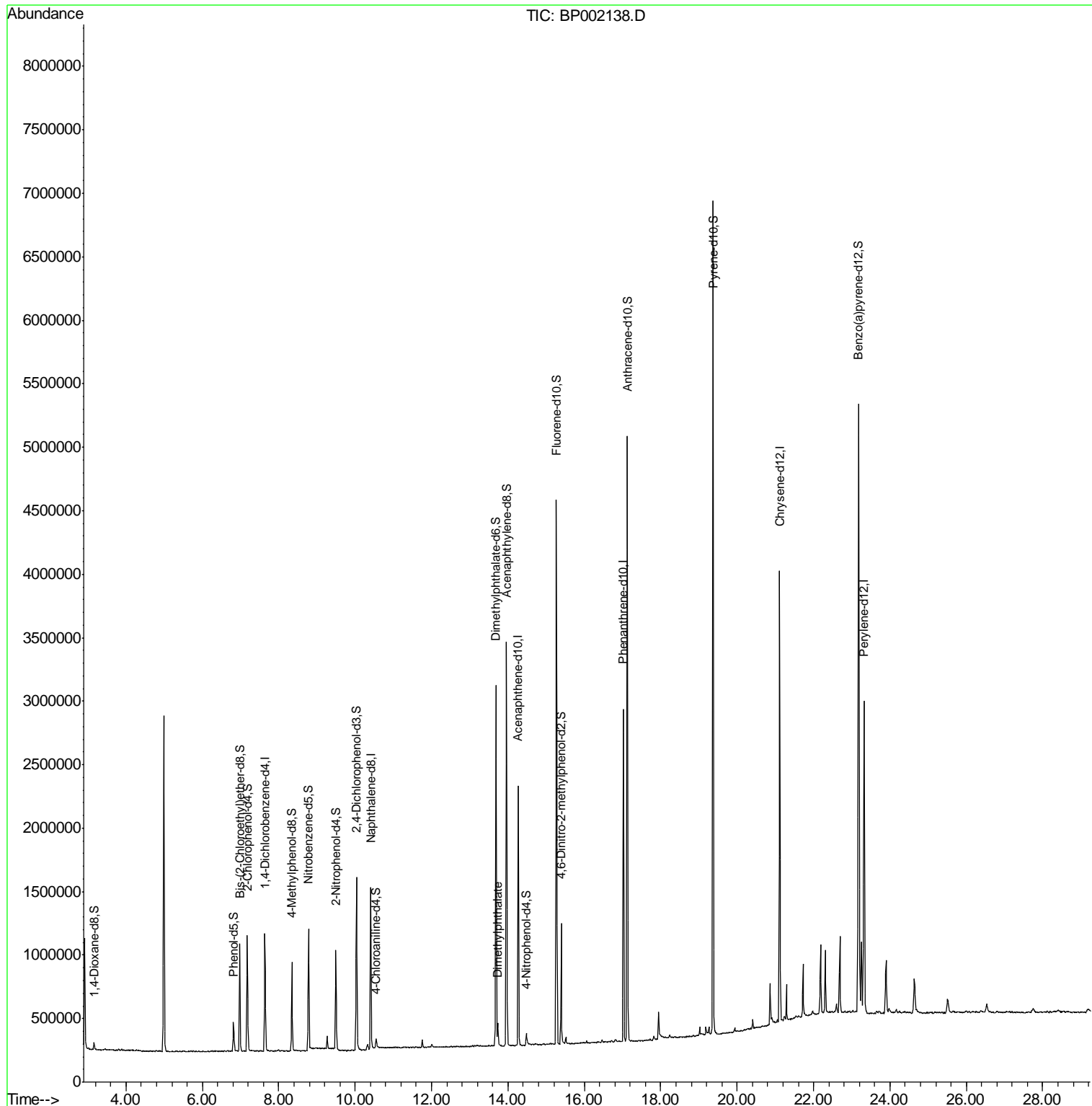
Target Compounds	R.T.	QIon	Response	Conc	Units	Ovalue
45) Dimethylphthalate	13.73	163	124859	2.121	ng/ul	99

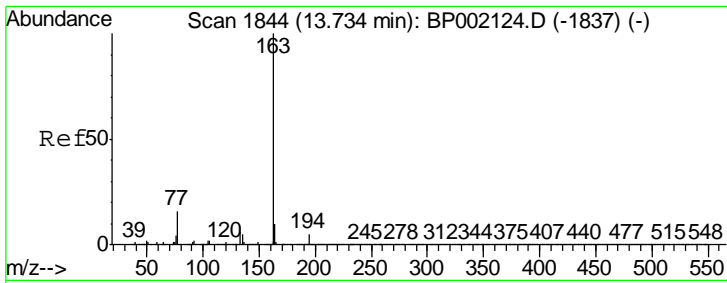
(#) = qualifier out of range (m) = manual integration (+) = signals summed

Data Path : Z:\SVOASRV\HPCHEM1\BNA P\DATA\BP030920\
 Data File : BP002138.D
 Acq On : 10 Mar 2020 01:09
 Operator : CG/JU
 Sample : L1834-11
 Misc :
 ALS Vial : 24 Sample Multiplier: 1

Instrument :
 BNA_P
 ClientSampleId :
 C0DK3

Quant Time: Mar 10 01:49:32 2020
 Quant Method : Z:\SVOASRV\HPCHEM1\BNA_P\METHODS\SOM-EPA-BP022720MA.M
 Quant Title : SVOA CALIBRATION
 QLast Update : Mon Mar 09 15:02:40 2020
 Response via : Initial Calibration





#45
 Dimethylphthalate
 Concen: 2.121 ng/ul
 RT: 13.73 min Scan# 1844
 Delta R.T. -0.00 min
 Lab File: BP002138.D
 Acq: 10 Mar 2020 01:09

Instrument :
 BNA_P
 ClientSampleID :
 C0DK3

Tot Ion	Ion	Ratio	Lower	Upper
124859	163	100		
	194	4.7	3.6	5.4
	164	10.9	8.2	12.4

