

Data Path : Z:\svoasrv\HPCHEM1\BNA_P\Data\BP040822\
 Data File : BP009714.D
 Acq On : 08 Apr 2022 13:07
 Operator : CG/JU
 Sample : N2183-06
 Misc :
 ALS Vial : 9 Sample Multiplier: 1

Instrument :
 BNA_P
 ClientSampleId :
 COR33

Integration Parameters: LSCINT.P

Integrator: RTE
 Smoothing : OFF Filtering: 5
 Sampling : 1 Min Area: 0.1 % of largest Peak
 Start Thrs: 0.2 Max Peaks: 100
 Stop Thrs : 0 Peak Location: TOP

If leading or trailing edge < 100 prefer < Baseline drop else tangent >
 Peak separation: 5

Method : Z:\svoasrv\HPCHEM1\BNA_P\Methods\SFAM-EPA-BP040722.M
 Title : SVOA CALIBRATION

Signal : TIC: BP009714.D\data.ms

peak #	R.T. min	first scan	max scan	last scan	PK TY	peak height	corr. area	corr. % max.	% of total
1	3.129	3	7	26	rVB	543074	844760	33.47%	3.282%
2	3.393	48	52	57	rBV2	12231	18598	0.74%	0.072%
3	3.811	119	123	137	rBV	84291	144063	5.71%	0.560%
4	3.917	137	141	147	rVB7	5975	10459	0.41%	0.041%
5	4.058	159	165	169	rBV4	4041	7465	0.30%	0.029%
6	4.152	176	181	188	rVB3	6740	11930	0.47%	0.046%
7	4.364	213	217	223	rVB8	3274	5705	0.23%	0.022%
8	5.075	333	338	343	rBV2	13387	20440	0.81%	0.079%
9	7.128	677	687	698	rBV	222693	393192	15.58%	1.527%
10	7.299	709	716	725	rBV	176008	287561	11.39%	1.117%
11	7.375	725	729	733	rVB2	3727	5513	0.22%	0.021%
12	7.505	745	751	759	rBV	225811	354589	14.05%	1.377%
13	7.617	766	770	776	rBV8	4903	8172	0.32%	0.032%
14	7.975	823	831	839	rBV	359425	580343	23.00%	2.254%
15	8.046	841	843	847	rVB4	4684	5697	0.23%	0.022%
16	8.122	850	856	864	rVV10	2400	4110	0.16%	0.016%
17	8.675	943	950	960	rBV	255428	419395	16.62%	1.629%
18	8.799	964	971	977	rVV	33334	57336	2.27%	0.223%
19	9.134	1017	1028	1037	rBV	229661	395624	15.68%	1.537%
20	9.240	1042	1046	1050	rVB7	2143	3688	0.15%	0.014%
21	9.311	1054	1058	1063	rVB8	3366	4476	0.18%	0.017%
22	9.605	1102	1108	1113	rBV3	5984	8963	0.36%	0.035%
23	9.858	1144	1151	1160	rBV	173974	296159	11.73%	1.150%
24	9.981	1167	1172	1178	rBV10	3270	5923	0.23%	0.023%
25	10.222	1209	1213	1218	rVB8	3764	6845	0.27%	0.027%
26	10.352	1231	1235	1236	rBV4	3317	3525	0.14%	0.014%
27	10.399	1236	1243	1253	rVB	293568	490638	19.44%	1.906%
28	10.787	1301	1309	1322	rBV	500421	883904	35.02%	3.434%
29	10.910	1322	1330	1346	rVB	266000	473571	18.76%	1.840%
30	11.569	1437	1442	1452	rVB7	6377	13427	0.53%	0.052%
31	11.834	1482	1487	1491	rVB8	2898	4879	0.19%	0.019%
32	12.228	1548	1554	1560	rBV4	7181	12416	0.49%	0.048%
33	12.369	1572	1578	1584	rVV6	7982	14046	0.56%	0.055%
34	12.446	1584	1591	1596	rVB5	7181	13120	0.52%	0.051%
35	12.657	1622	1627	1633	rBV2	5859	10920	0.43%	0.042%
36	13.028	1687	1690	1696	rBV8	2684	4450	0.18%	0.017%

Data Path : Z:\svoasrv\HPCHEM1\BNA_P\Data\BP040822\
 Data File : BP009714.D
 Acq On : 08 Apr 2022 13:07
 Operator : CG/JU
 Sample : N2183-06
 Misc :
 ALS Vial : 9 Sample Multiplier: 1

Instrument :
 BNA_P
 ClientSampleId :
 COR33

Integration Parameters: LSCINT.P

Integrator: RTE
 Smoothing : OFF Filtering: 5
 Sampling : 1 Min Area: 0.1 % of largest Peak
 Start Thrs: 0.2 Max Peaks: 100
 Stop Thrs : 0 Peak Location: TOP

If leading or trailing edge < 100 prefer < Baseline drop else tangent >
 Peak separation: 5

Method : Z:\svoasrv\HPCHEM1\BNA_P\Methods\SFAM-EPA-BP040722.M
 Title : SVOA CALIBRATION

37	13.175	1710	1715	1720	rVB7	4183	5903	0.23%	0.023%
38	13.452	1758	1762	1771	rBV4	15390	25040	0.99%	0.097%
39	13.528	1771	1775	1780	rVB8	1968	3506	0.14%	0.014%
40	13.775	1811	1817	1818	rBV4	3664	5211	0.21%	0.020%
41	13.934	1840	1844	1848	rVV5	6240	9322	0.37%	0.036%
42	14.016	1849	1858	1864	rVV	653322	927819	36.76%	3.604%
43	14.057	1864	1865	1872	rVV7	5556	9623	0.38%	0.037%
44	14.116	1872	1875	1877	rVV4	4273	5258	0.21%	0.020%
45	14.163	1879	1883	1889	rVB9	3829	7197	0.29%	0.028%
46	14.299	1895	1906	1918	rBV	661663	984795	39.02%	3.825%
47	14.522	1940	1944	1948	rVB	8066	10045	0.40%	0.039%
48	14.610	1951	1959	1966	rBV	873112	1317582	52.21%	5.118%
49	14.781	1981	1988	2000	rBV	301591	445295	17.64%	1.730%
50	14.869	2000	2003	2007	rVB6	4027	6027	0.24%	0.023%
51	14.940	2007	2015	2017	rBV9	3776	5989	0.24%	0.023%
52	15.022	2022	2029	2037	rBV5	43495	74120	2.94%	0.288%
53	15.087	2037	2040	2045	rVB6	5097	7837	0.31%	0.030%
54	15.234	2059	2065	2067	rBV7	3470	5152	0.20%	0.020%
55	15.287	2070	2074	2077	rVB6	4612	6358	0.25%	0.025%
56	15.410	2091	2095	2096	rBV4	3347	3752	0.15%	0.015%
57	15.422	2096	2097	2103	rVB5	5970	6550	0.26%	0.025%
58	15.475	2103	2106	2111	rVB7	5667	8205	0.33%	0.032%
59	15.598	2120	2127	2134	rBV	919289	1325388	52.52%	5.149%
60	15.651	2134	2136	2140	rVV3	10123	12015	0.48%	0.047%
61	15.704	2140	2145	2154	rVB	263015	356476	14.12%	1.385%
62	15.840	2164	2168	2173	rVV3	7473	10150	0.40%	0.039%
63	15.951	2183	2187	2191	rBV2	6054	9153	0.36%	0.036%
64	16.093	2207	2211	2219	rVB5	7482	14711	0.58%	0.057%
65	16.334	2249	2252	2255	rBV5	5836	8867	0.35%	0.034%
66	16.369	2255	2258	2267	rVB9	7255	15706	0.62%	0.061%
67	16.763	2321	2325	2328	rBV5	7391	8575	0.34%	0.033%
68	16.898	2344	2348	2352	rBV5	11210	18418	0.73%	0.072%
69	17.004	2362	2366	2369	rBV5	4668	5632	0.22%	0.022%
70	17.098	2378	2382	2383	rBV4	4374	5266	0.21%	0.020%
71	17.140	2386	2389	2393	rVV6	6598	9147	0.36%	0.036%
72	17.263	2407	2410	2414	rBV6	3167	3796	0.15%	0.015%
73	17.357	2418	2426	2431	rBV	1161448	1678521	66.51%	6.520%
74	17.398	2431	2433	2438	rVV	90586	122606	4.86%	0.476%
75	17.457	2438	2443	2454	rVV	1117356	1617817	64.10%	6.284%
76	17.545	2454	2458	2466	rVB6	23675	38231	1.51%	0.149%

Data Path : Z:\svoasrv\HPCHEM1\BNA_P\Data\BP040822\
 Data File : BP009714.D
 Acq On : 08 Apr 2022 13:07
 Operator : CG/JU
 Sample : N2183-06
 Misc :
 ALS Vial : 9 Sample Multiplier: 1

Instrument :
 BNA_P
 ClientSampleId :
 C0R33

Integration Parameters: LSCINT.P

Integrator: RTE
 Smoothing : OFF Filtering: 5
 Sampling : 1 Min Area: 0.1 % of largest Peak
 Start Thrs: 0.2 Max Peaks: 100
 Stop Thrs : 0 Peak Location: TOP

If leading or trailing edge < 100 prefer < Baseline drop else tangent >
 Peak separation: 5

Method : Z:\svoasrv\HPCHEM1\BNA_P\Methods\SFAM-EPA-BP040722.M
 Title : SVOA CALIBRATION

77	17.651	2475	2476	2482	rVB6	2801	3496	0.14%	0.014%
78	17.769	2492	2496	2499	rVB3	9891	14622	0.58%	0.057%
79	17.881	2511	2515	2517	rBV5	5322	6832	0.27%	0.027%
80	18.040	2538	2542	2546	rBV7	4394	6079	0.24%	0.024%
81	18.134	2550	2558	2563	rBV2	50791	107943	4.28%	0.419%
82	18.181	2563	2566	2570	rVV5	15497	25361	1.00%	0.099%
83	18.245	2570	2577	2586	rVB3	112754	198973	7.88%	0.773%
84	18.410	2600	2605	2609	rBV4	20825	37785	1.50%	0.147%
85	18.545	2624	2628	2632	rBV7	10798	16195	0.64%	0.063%
86	18.669	2645	2649	2651	rBV3	18888	22835	0.90%	0.089%
87	18.704	2652	2655	2659	rVB	14854	18740	0.74%	0.073%
88	19.098	2717	2722	2728	rVB4	34325	56935	2.26%	0.221%
89	19.151	2728	2731	2733	rBV4	11411	13937	0.55%	0.054%
90	19.263	2748	2750	2755	rVB4	24859	29160	1.16%	0.113%
91	19.357	2759	2766	2774	rVB	201649	308390	12.22%	1.198%
92	19.475	2783	2786	2789	rBV4	18671	20610	0.82%	0.080%
93	19.686	2816	2822	2834	rBV	1718061	2523726	100.00%	9.804%
94	20.122	2893	2896	2899	rBV2	18735	20248	0.80%	0.079%
95	21.151	3068	3071	3078	rBV2	220900	272955	10.82%	1.060%
96	21.439	3114	3120	3125	rBV	1581519	2180314	86.39%	8.470%
97	22.098	3228	3232	3237	rVB2	114404	164019	6.50%	0.637%
98	23.757	3507	3514	3527	rVB	1116421	2331575	92.39%	9.057%
99	23.916	3535	3541	3555	rVB2	992675	2035213	80.64%	7.906%
100	25.439	3796	3800	3808	rVB7	166324	360151	14.27%	1.399%

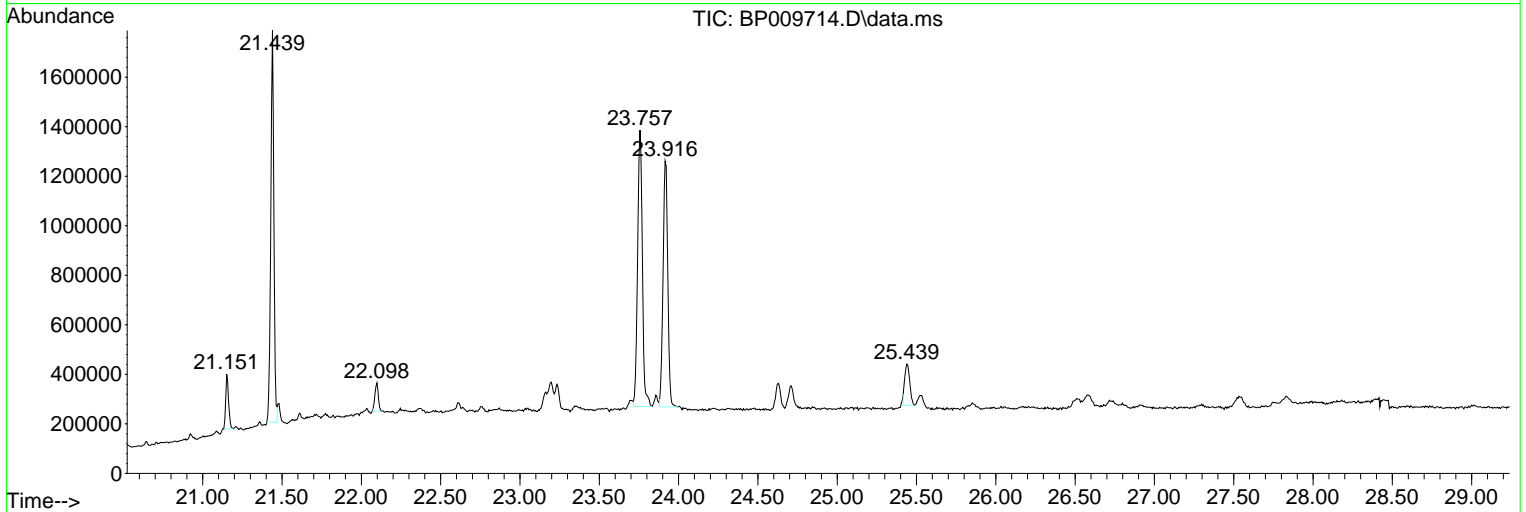
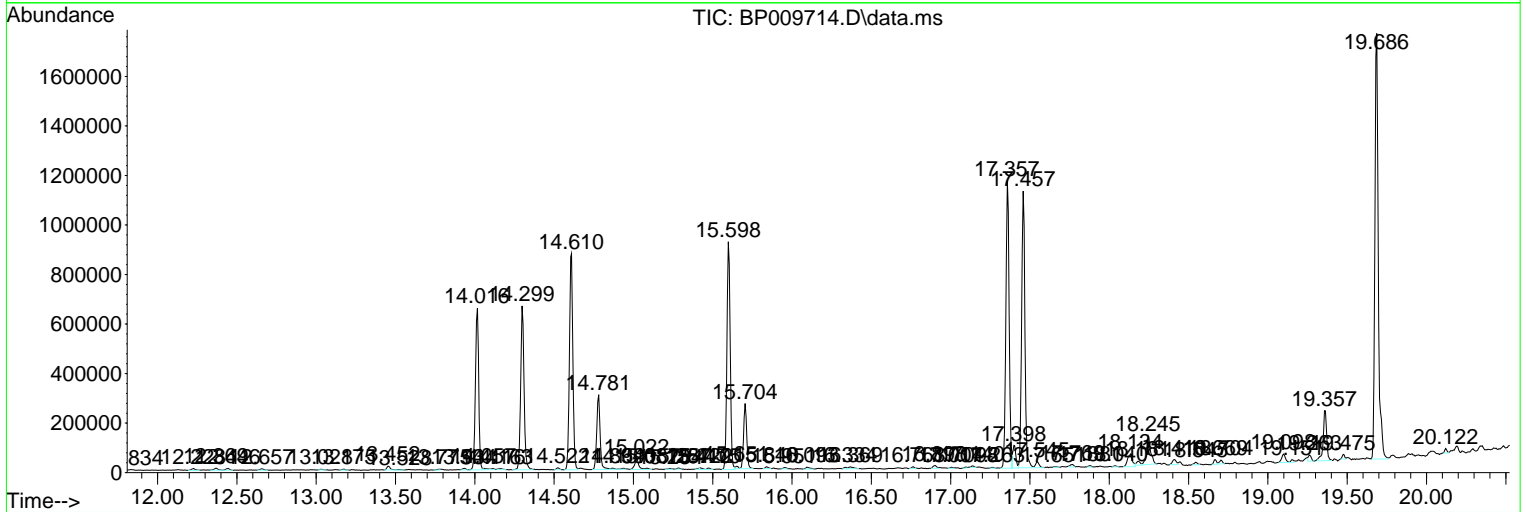
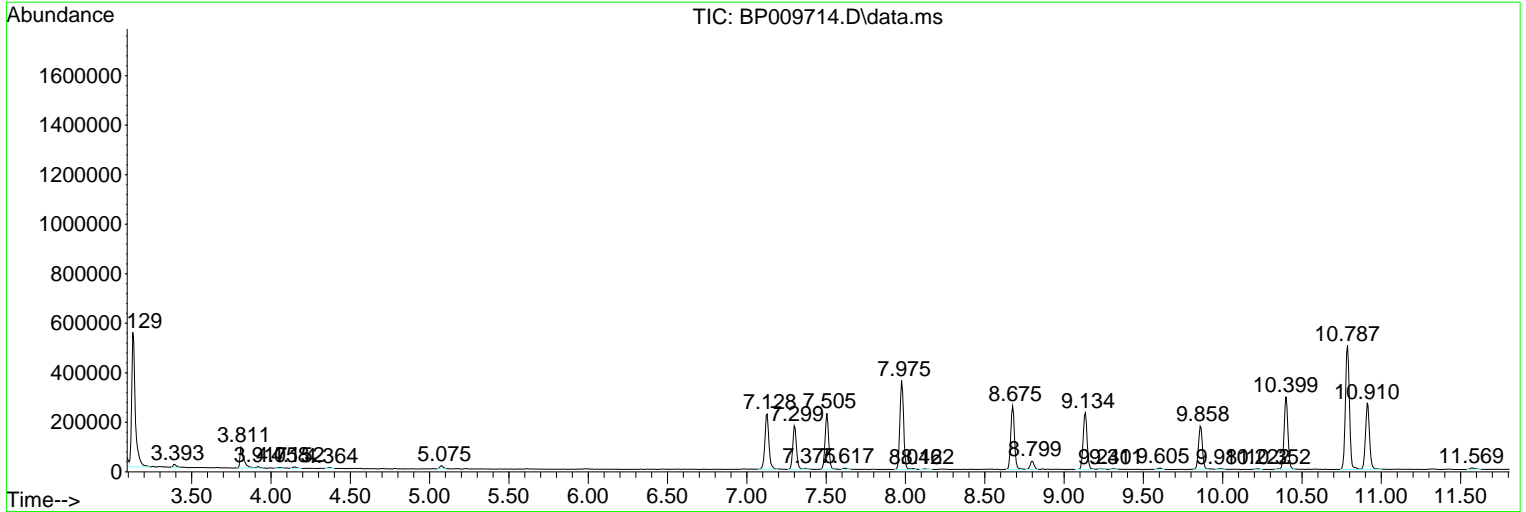
Sum of corrected areas: 25743057

Data Path : Z:\svoasrv\HPCHEM1\BNA_P\Data\BP040822\
 Data File : BP009714.D
 Acq On : 08 Apr 2022 13:07
 Operator : CG/JU
 Sample : N2183-06
 Misc :
 ALS Vial : 9 Sample Multiplier: 1

Instrument :
 BNA_P
 ClientSampleId :
 C0R33

Quant Method : Z:\svoasrv\HPCHEM1\BNA_P\Methods\SFAM-EPA-BP040722.M
 Quant Title : SVOA CALIBRATION

TIC Library : C:\DATABASE\NIST20.L
 TIC Integration Parameters: LSCINT.P



Data Path : Z:\svoasrv\HPCHEM1\BNA_P\Data\BP040822\
 Data File : BP009714.D
 Acq On : 08 Apr 2022 13:07
 Operator : CG/JU
 Sample : N2183-06
 Misc :
 ALS Vial : 9 Sample Multiplier: 1

Instrument :
 BNA_P
 ClientSampleId :
 C0R33

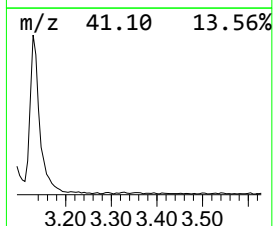
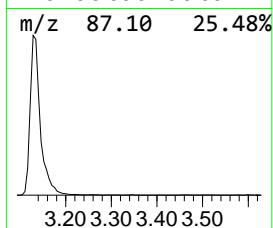
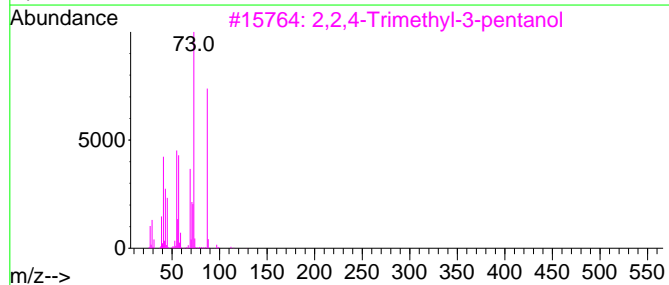
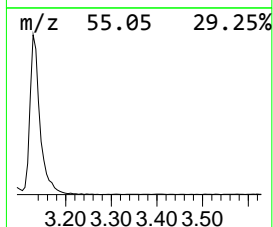
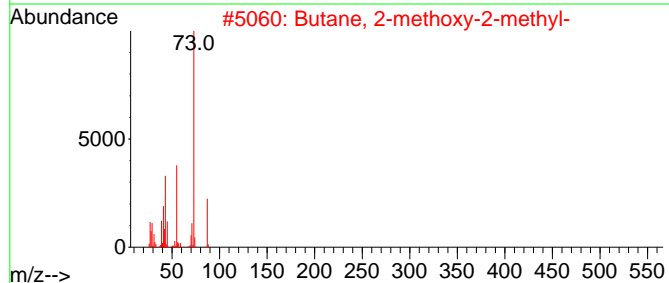
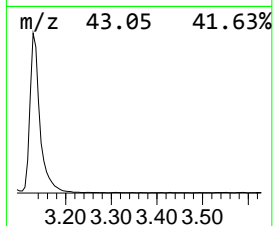
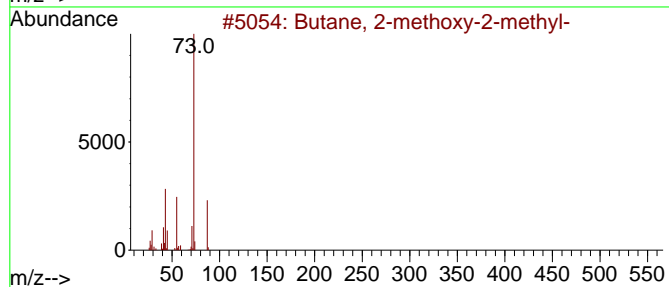
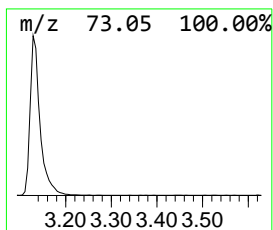
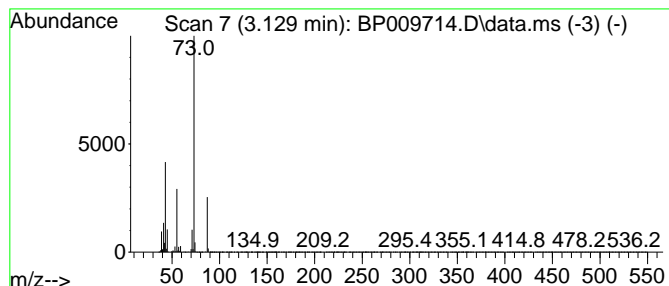
Quant Method : Z:\svoasrv\HPCHEM1\BNA_P\Methods\SFAM-EPA-BP040722.M
 Quant Title : SVOA CALIBRATION

TIC Library : C:\DATABASE\NIST20.L
 TIC Integration Parameters: LSCINT.P

 Peak Number 1 Butane, 2-methoxy-2-methyl- Concentration Rank 1

R.T.	EstConc	Area	Relative to ISTD	R.T.
3.129	29.11 ng/ul	844760	1,4-Dichlorobenzene-d4	7.975

Hit#	of	5	Tentative ID	MW	MolForm	CAS#	Qual
1			Butane, 2-methoxy-2-methyl-	102	C6H14O	000994-05-8	83
2			Butane, 2-methoxy-2-methyl-	102	C6H14O	000994-05-8	72
3			2,2,4-Trimethyl-3-pentanol	130	C8H18O	005162-48-1	39
4			Silane, tetramethyl-	88	C4H12Si	000075-76-3	12
5			Silane, tetramethyl-	88	C4H12Si	000075-76-3	9



Data Path : Z:\svoasrv\HPCHEM1\BNA_P\Data\BP040822\
 Data File : BP009714.D
 Acq On : 08 Apr 2022 13:07
 Operator : CG/JU
 Sample : N2183-06
 Misc :
 ALS Vial : 9 Sample Multiplier: 1

Instrument :
 BNA_P
 ClientSampleId :
 C0R33

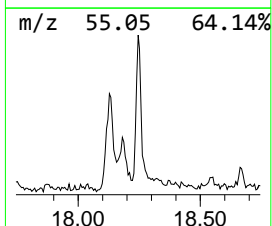
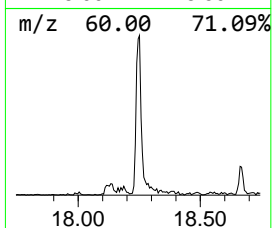
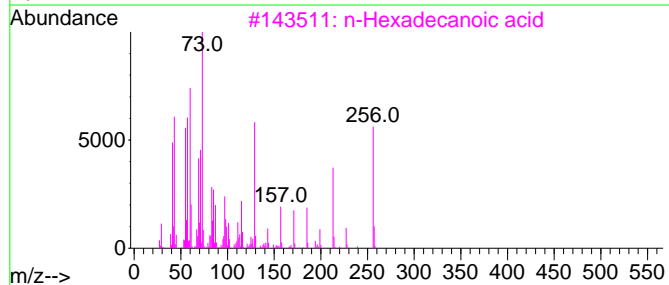
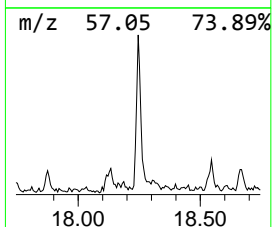
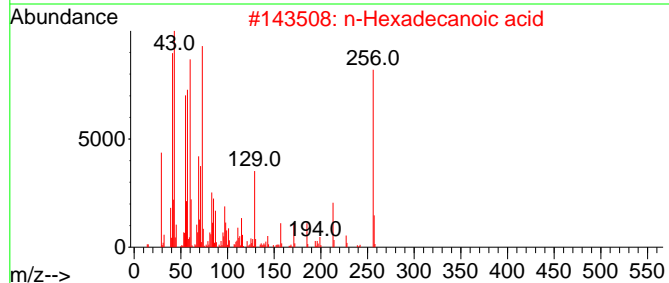
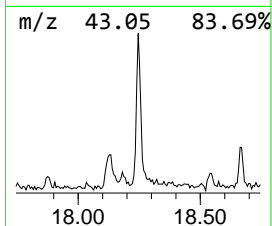
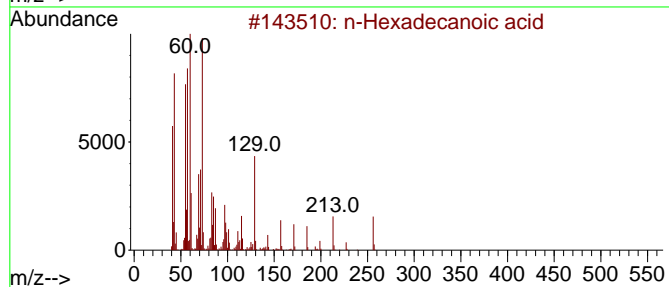
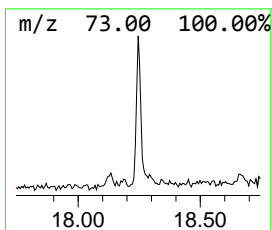
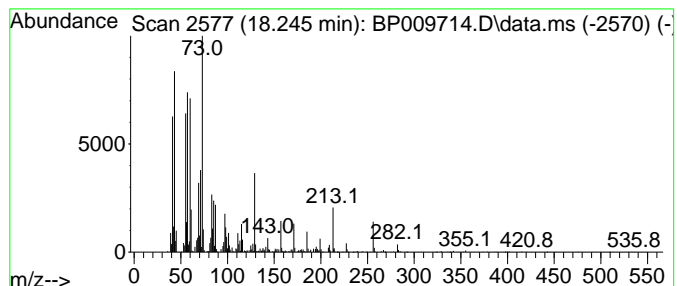
Quant Method : Z:\svoasrv\HPCHEM1\BNA_P\Methods\SFAM-EPA-BP040722.M
 Quant Title : SVOA CALIBRATION

TIC Library : C:\DATABASE\NIST20.L
 TIC Integration Parameters: LSCINT.P

 Peak Number 2 n-Hexadecanoic acid Concentration Rank 4

R.T.	EstConc	Area	Relative to ISTD	R.T.
18.245	2.37 ng/ul	198973	Phenanthrene-d10	17.357

Hit#	of	5	Tentative ID	MW	MolForm	CAS#	Qual
1	n-Hexadecanoic acid	256	C16H32O2	000057-10-3	99		
2	n-Hexadecanoic acid	256	C16H32O2	000057-10-3	99		
3	n-Hexadecanoic acid	256	C16H32O2	000057-10-3	97		
4	n-Hexadecanoic acid	256	C16H32O2	000057-10-3	94		
5	Tridecanoic acid	214	C13H26O2	000638-53-9	93		



Data Path : Z:\svoasrv\HPCHEM1\BNA_P\Data\BP040822\
 Data File : BP009714.D
 Acq On : 08 Apr 2022 13:07
 Operator : CG/JU
 Sample : N2183-06
 Misc :
 ALS Vial : 9 Sample Multiplier: 1

Instrument :
 BNA_P
 ClientSampleId :
 C0R33

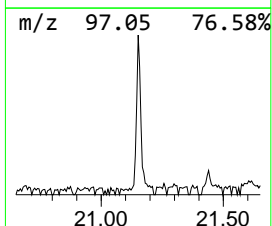
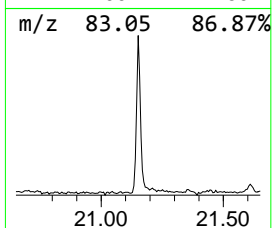
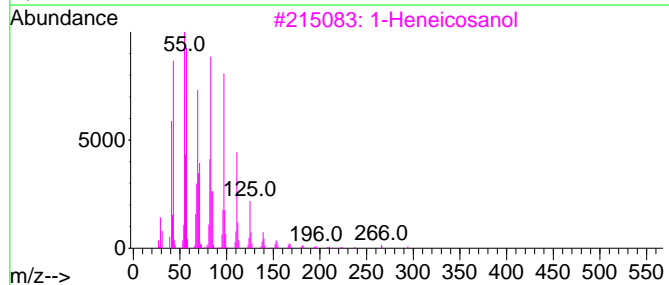
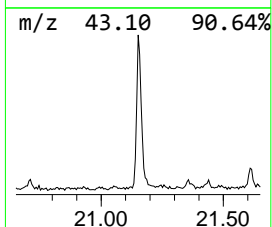
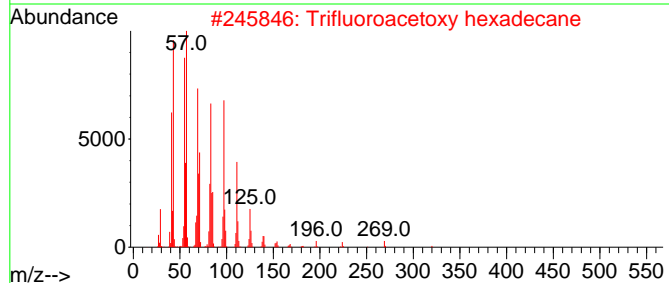
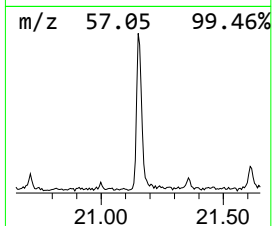
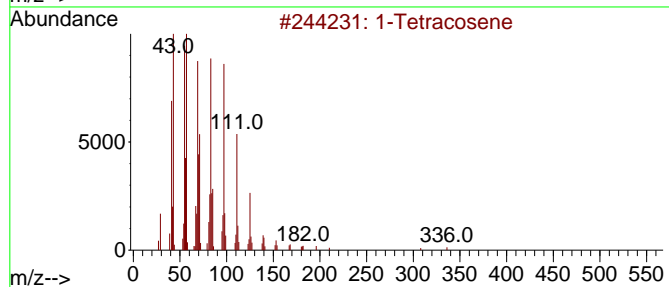
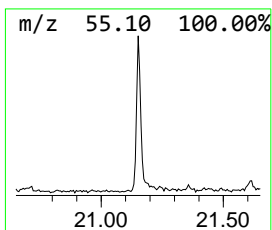
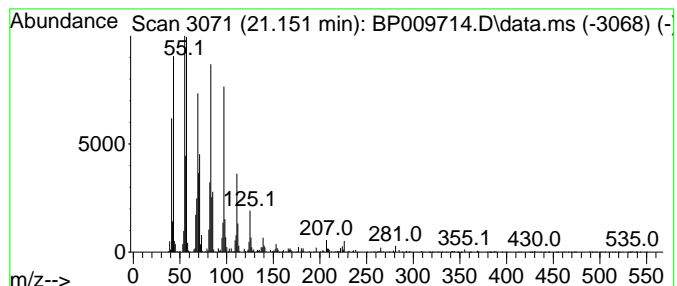
Quant Method : Z:\svoasrv\HPCHEM1\BNA_P\Methods\SFAM-EPA-BP040722.M
 Quant Title : SVOA CALIBRATION

TIC Library : C:\DATABASE\NIST20.L
 TIC Integration Parameters: LSCINT.P

 Peak Number 3 (DEL) Alkane: Straight-Chai... Concentration Rank 3

R.T.	EstConc	Area	Relative to ISTD	R.T.
21.151	2.50 ng/ul	272955	Chrysene-d12	21.439

Hit#	of 5	Tentative ID	MW	MolForm	CAS#	Qual
1		1-Tetracosene	336	C24H48	010192-32-2	94
2		Trifluoroacetoxy hexadecane	338	C18H33F3O2	006222-03-3	94
3		1-Heneicosanol	312	C21H44O	015594-90-8	94
4		Pentacos-1-ene	350	C25H50	016980-85-1	94
5		1-Hexacosene	364	C26H52	018835-33-1	94



Data Path : Z:\svoasrv\HPCHEM1\BNA_P\Data\BP040822\
 Data File : BP009714.D
 Acq On : 08 Apr 2022 13:07
 Operator : CG/JU
 Sample : N2183-06
 Misc :
 ALS Vial : 9 Sample Multiplier: 1

Instrument :
 BNA_P
 ClientSampleId :
 COR33

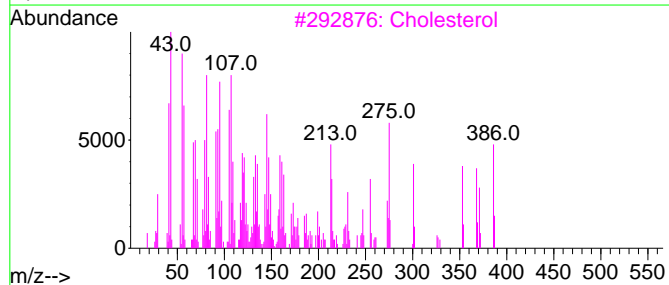
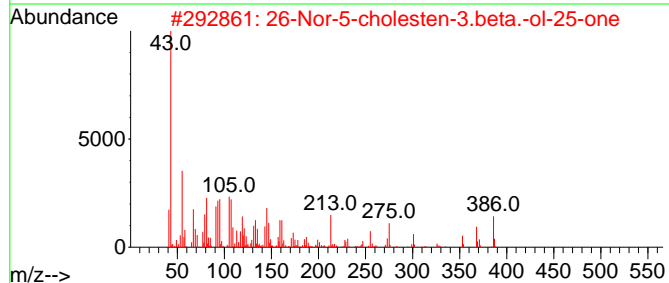
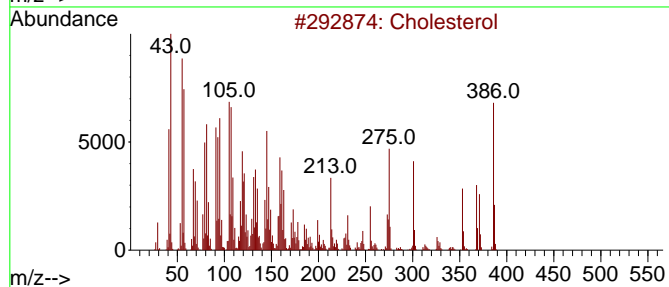
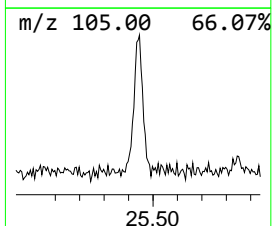
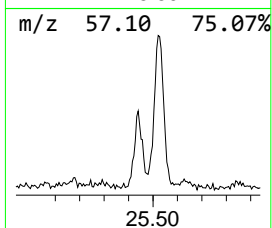
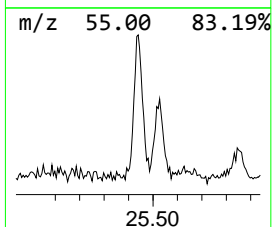
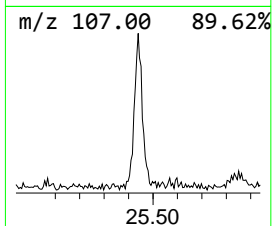
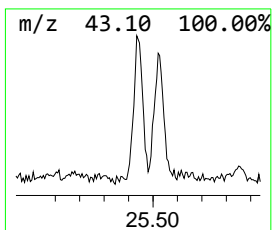
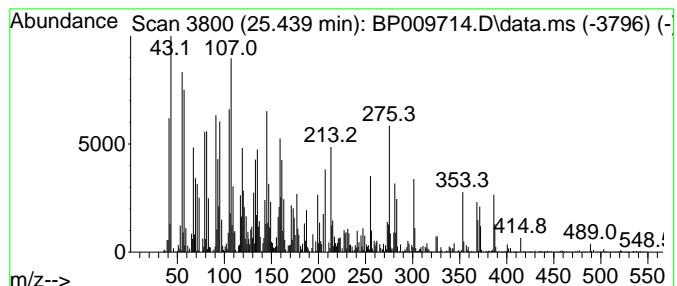
Quant Method : Z:\svoasrv\HPCHEM1\BNA_P\Methods\SFAM-EPA-BP040722.M
 Quant Title : SVOA CALIBRATION

TIC Library : C:\DATABASE\NIST20.L
 TIC Integration Parameters: LSCINT.P

 Peak Number 4 Cholesterol Concentration Rank 2

R.T.	EstConc	Area	Relative to ISTD	R.T.
25.439	3.54 ng/ul	360151	Perylene-d12	23.916

Hit#	of	Tentative ID	MW	MolForm	CAS#	Qual
1	5	Cholesterol	386	C27H46O	000057-88-5	95
2		26-Nor-5-cholesten-3.beta.-ol-25...	386	C26H42O2	007494-34-0	95
3		Cholesterol	386	C27H46O	000057-88-5	91
4		Isocholesteryl methyl ether	400	C28H48O	029944-53-4	53
5		Lathosterol	386	C27H46O	000080-99-9	50



Data Path : Z:\svoasrv\HPCHEM1\BNA_P\Data\BP040822\
Data File : BP009714.D
Acq On : 08 Apr 2022 13:07
Operator : CG/JU
Sample : N2183-06
Misc :
ALS Vial : 9 Sample Multiplier: 1

Instrument :
BNA_P
ClientSampleId :
C0R33

Quant Method : Z:\svoasrv\HPCHEM1\BNA_P\Methods\SFAM-EPA-BP040722.M
Quant Title : SVOA CALIBRATION

TIC Library : C:\DATABASE\NIST20.L
TIC Integration Parameters: LSCINT.P

TIC Top Hit name	RT	EstConc	Units	Response	--Internal Standard--			
					#	RT	Resp	Conc
Butane, 2-metho...	3.129	29.1	ng/ul	844760	1	7.975	580343	20.0
n-Hexadecanoic ...	18.245	2.4	ng/ul	198973	4	17.357	1678520	20.0
(DEL) Alkane: S...	21.151	2.5	ng/ul	272955	5	21.439	2180310	20.0
Cholesterol	25.439	3.5	ng/ul	360151	6	23.916	2035210	20.0