

Data Path : Z:\svoasrv\HPCHEM1\BNA_P\Data\BP041522\
 Data File : BP009856.D
 Acq On : 15 Apr 2022 12:15
 Operator : CG/JU
 Sample : N2422-01
 Misc :
 ALS Vial : 6 Sample Multiplier: 1

Instrument :
 BNA_P
 ClientSampleId :
 COJ08

Integration Parameters: LSCINT.P

Integrator: RTE
 Smoothing : OFF Filtering: 5
 Sampling : 1 Min Area: 0.1 % of largest Peak
 Start Thrs: 0.2 Max Peaks: 100
 Stop Thrs : 0 Peak Location: TOP

If leading or trailing edge < 100 prefer < Baseline drop else tangent >
 Peak separation: 5

Method : Z:\svoasrv\HPCHEM1\BNA_P\Methods\SFAM-EPA-BP040722.M
 Title : SVOA CALIBRATION

Signal : TIC: BP009856.D\data.ms

peak #	R.T. min	first scan	max scan	last scan	PK TY	peak height	corr. area	corr. % max.	% of total
1	3.122	3	6	19	rVB	265139	381703	8.86%	1.048%
2	3.381	46	50	58	rBV	22394	32448	0.75%	0.089%
3	3.805	119	122	136	rBV	106968	196758	4.57%	0.540%
4	4.134	176	178	183	rVB2	8808	11164	0.26%	0.031%
5	5.269	366	371	375	rBV	7868	11830	0.27%	0.032%
6	7.110	678	684	695	rVB	115208	191477	4.44%	0.526%
7	7.281	707	713	723	rBV	383330	620328	14.39%	1.703%
8	7.357	724	726	735	rVB7	3982	9491	0.22%	0.026%
9	7.487	740	748	757	rBV	384794	628940	14.59%	1.726%
10	7.957	821	828	837	rBV	393042	646737	15.01%	1.775%
11	8.657	940	947	959	rBV	342026	551053	12.79%	1.513%
12	9.116	1016	1025	1036	rBV	523216	883065	20.49%	2.424%
13	9.575	1095	1103	1110	rVB4	7289	13809	0.32%	0.038%
14	9.840	1139	1148	1160	rBV	415255	690395	16.02%	1.895%
15	10.381	1232	1240	1254	rBV	588285	984975	22.86%	2.704%
16	10.763	1296	1305	1318	rBV	573321	999349	23.19%	2.743%
17	10.893	1320	1327	1339	rBV	581567	1022901	23.74%	2.808%
18	12.351	1569	1575	1581	rBV2	13681	24996	0.58%	0.069%
19	13.434	1755	1759	1762	rBV6	5208	6710	0.16%	0.018%
20	13.992	1848	1854	1872	rBV	1359297	1940146	45.02%	5.326%
21	14.281	1894	1903	1914	rBV	1430902	2075297	48.16%	5.697%
22	14.592	1947	1956	1966	rBV	972113	1481199	34.37%	4.066%
23	14.763	1979	1985	2000	rBV	130368	214373	4.97%	0.588%
24	15.010	2020	2027	2030	rBV9	3720	6567	0.15%	0.018%
25	15.134	2043	2048	2055	rBV	10328	21360	0.50%	0.059%
26	15.251	2064	2068	2074	rVB8	2914	5288	0.12%	0.015%
27	15.333	2077	2082	2086	rBV7	2837	5039	0.12%	0.014%
28	15.581	2116	2124	2136	rBV	2014333	2887559	67.01%	7.927%
29	15.692	2136	2143	2154	rBV	643832	942373	21.87%	2.587%
30	15.822	2160	2165	2174	rVB2	23399	37987	0.88%	0.104%
31	16.281	2236	2243	2245	rBV7	3630	7435	0.17%	0.020%
32	16.369	2253	2258	2264	rVB4	9127	13490	0.31%	0.037%
33	17.116	2382	2385	2388	rBV3	3396	5847	0.14%	0.016%
34	17.339	2416	2423	2430	rBV	1325649	1889903	43.86%	5.188%
35	17.439	2433	2440	2451	rBV	2504073	3538778	82.12%	9.714%
36	18.222	2569	2573	2578	rBV2	65435	83187	1.93%	0.228%

Data Path : Z:\svoasrv\HPCHEM1\BNA_P\Data\BP041522\
 Data File : BP009856.D
 Acq On : 15 Apr 2022 12:15
 Operator : CG/JU
 Sample : N2422-01
 Misc :
 ALS Vial : 6 Sample Multiplier: 1

Instrument :
 BNA_P
 ClientSampleId :
 C0J08

Integration Parameters: LSCINT.P
 Integrator: RTE
 Smoothing : OFF Filtering: 5
 Sampling : 1 Min Area: 0.1 % of largest Peak
 Start Thrs: 0.2 Max Peaks: 100
 Stop Thrs : 0 Peak Location: TOP

If leading or trailing edge < 100 prefer < Baseline drop else tangent >
 Peak separation: 5

Method : Z:\svoasrv\HPCHEM1\BNA_P\Methods\SFAM-EPA-BP040722.M
 Title : SVOA CALIBRATION

37	19.245	2743	2747	2753	rVB2	32940	47350	1.10%	0.130%
38	19.316	2754	2759	2764	rBV	37106	51103	1.19%	0.140%
39	19.457	2779	2783	2787	rBV6	13748	20124	0.47%	0.055%
40	19.669	2813	2819	2829	rBV	3386969	4267316	99.02%	11.714%
41	21.127	3063	3067	3077	rVB2	168527	223680	5.19%	0.614%
42	21.421	3111	3117	3123	rBV	1711008	2260834	52.46%	6.206%
43	23.727	3501	3509	3517	rBV2	2152722	4309369	100.00%	11.829%
44	23.886	3529	3536	3549	rVB	1060331	2185295	50.71%	5.999%

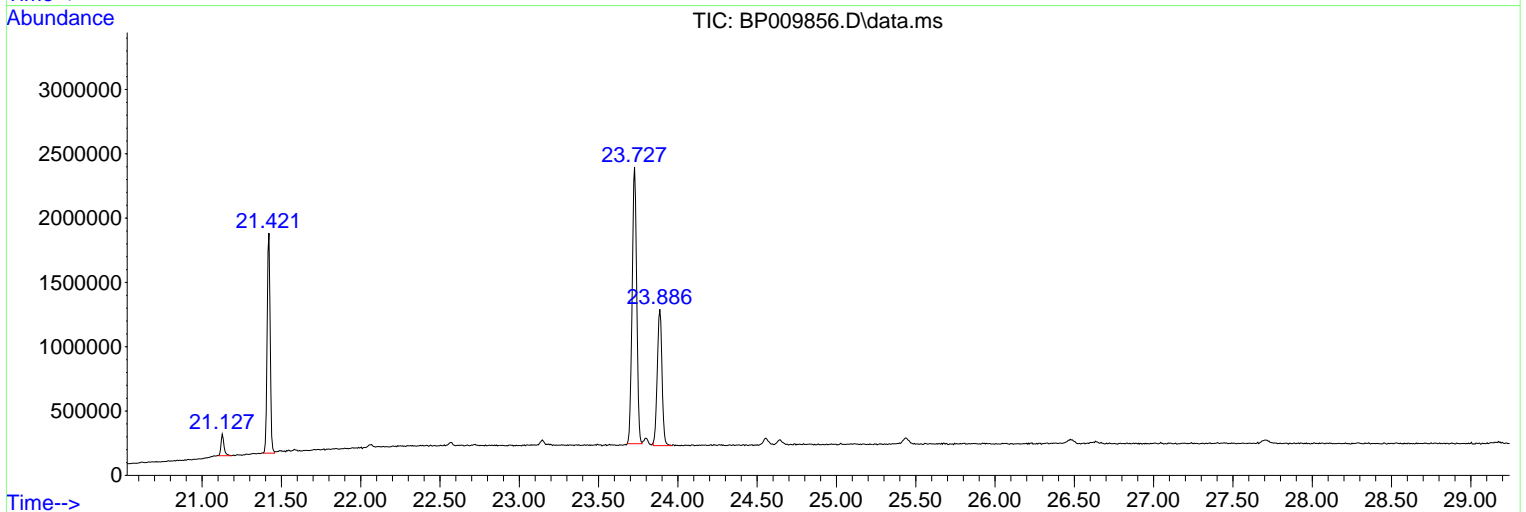
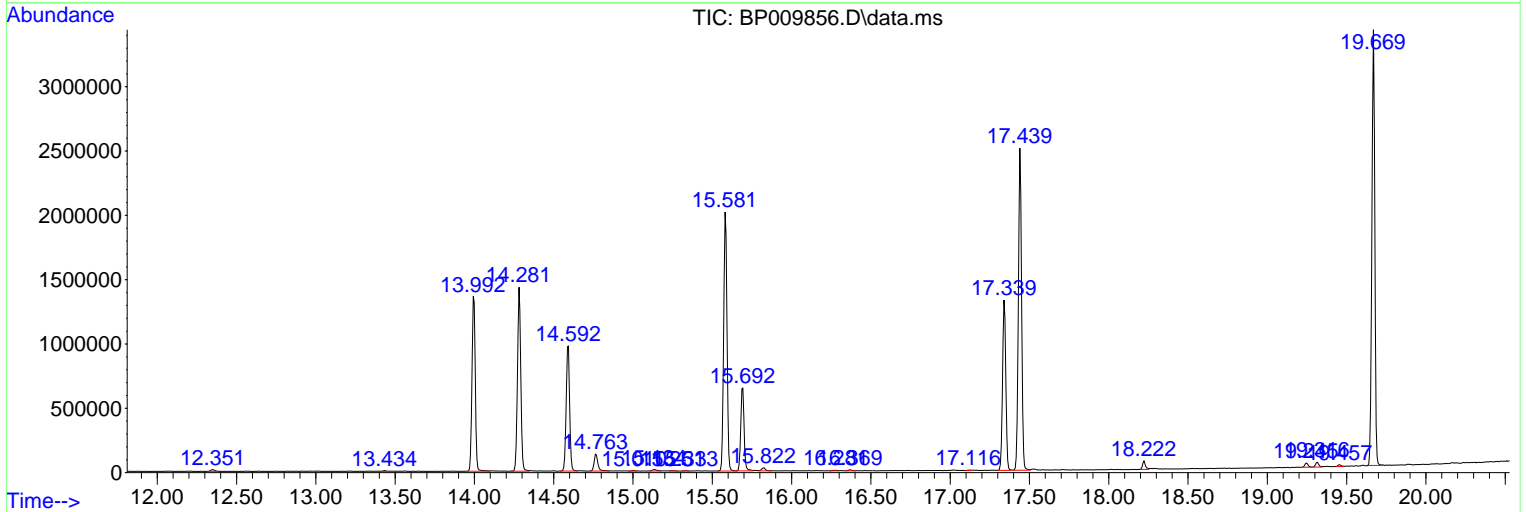
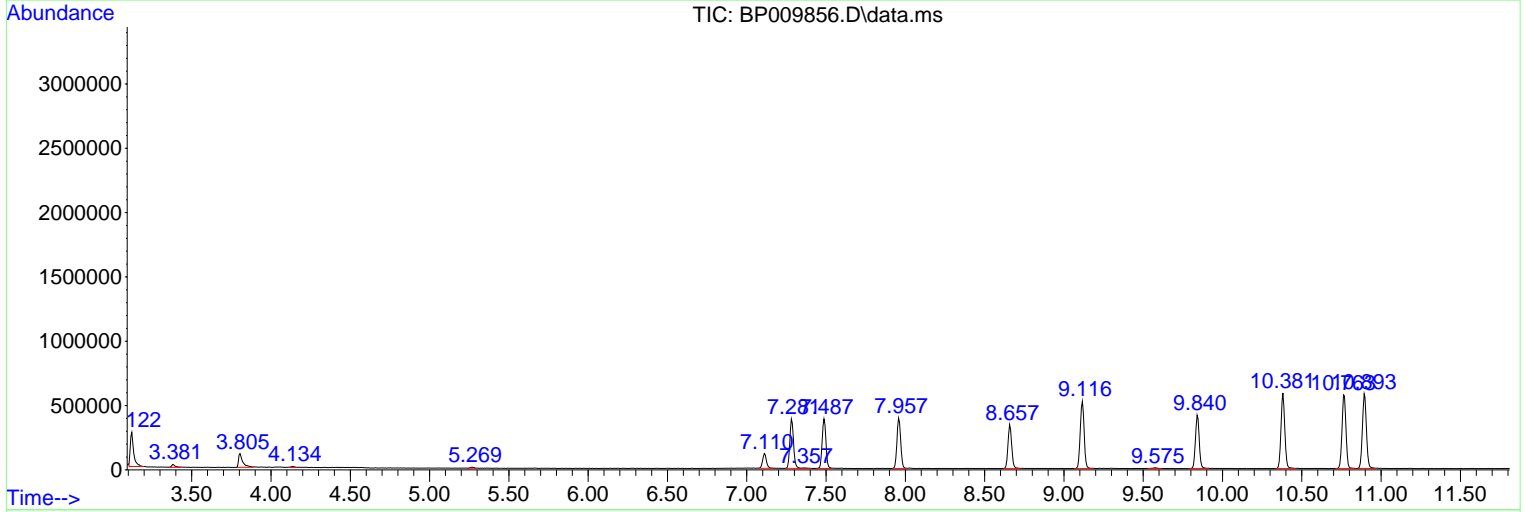
Sum of corrected areas: 36429028

Data Path : Z:\svoasrv\HPCHEM1\BNA_P\Data\BP041522\
 Data File : BP009856.D
 Acq On : 15 Apr 2022 12:15
 Operator : CG/JU
 Sample : N2422-01
 Misc :
 ALS Vial : 6 Sample Multiplier: 1

Instrument :
 BNA_P
 ClientSampleId :
 C0J08

Quant Method : Z:\svoasrv\HPCHEM1\BNA_P\Methods\SFAM-EPA-BP040722.M
 Quant Title : SVOA CALIBRATION

TIC Library : C:\DATABASE\NIST20.L
 TIC Integration Parameters: LSCINT.P



Data Path : Z:\svoasrv\HPCHEM1\BNA_P\Data\BP041522\
 Data File : BP009856.D
 Acq On : 15 Apr 2022 12:15
 Operator : CG/JU
 Sample : N2422-01
 Misc :
 ALS Vial : 6 Sample Multiplier: 1

Instrument :
 BNA_P
 ClientSampleId :
 C0J08

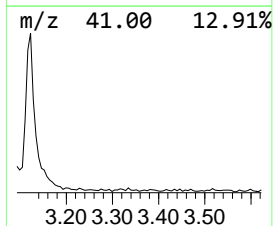
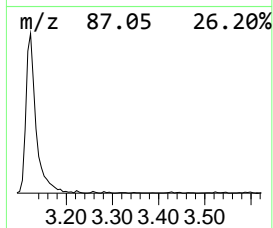
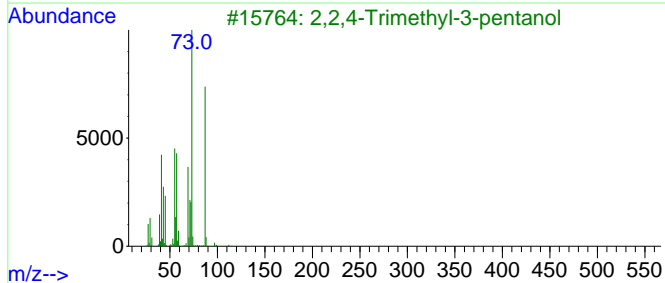
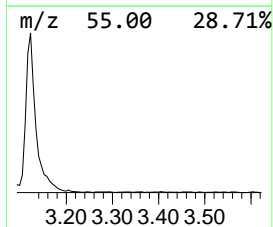
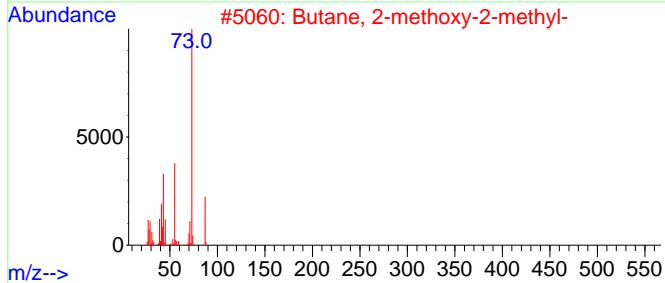
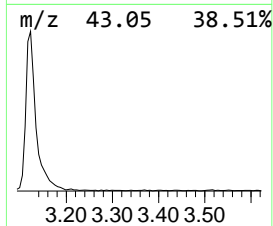
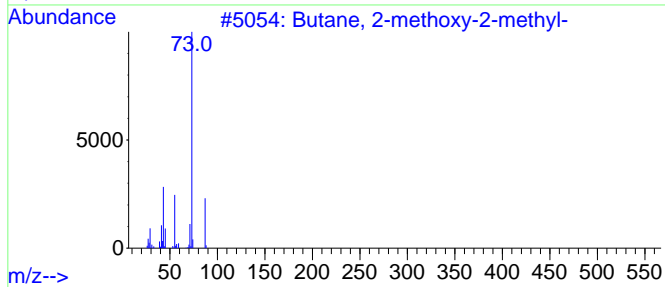
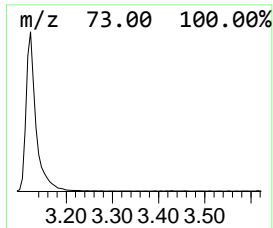
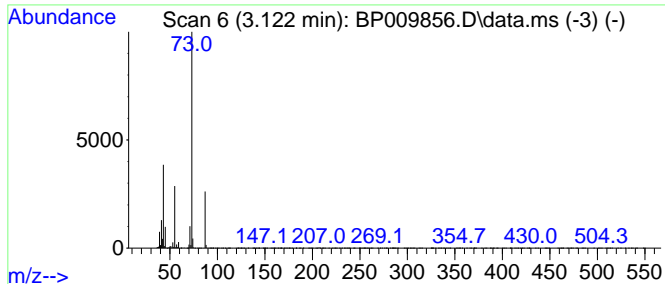
Quant Method : Z:\svoasrv\HPCHEM1\BNA_P\Methods\SFAM-EPA-BP040722.M
 Quant Title : SVOA CALIBRATION

TIC Library : C:\DATABASE\NIST20.L
 TIC Integration Parameters: LSCINT.P

 Peak Number 1 Butane, 2-methoxy-2-methyl- Concentration Rank 1

R.T.	EstConc	Area	Relative to ISTD	R.T.
3.122	11.80 ng/ul	381703	1,4-Dichlorobenzene-d4	7.957

Hit#	of	5	Tentative ID	MW	MolForm	CAS#	Qual
1			Butane, 2-methoxy-2-methyl-	102	C6H14O	000994-05-8	83
2			Butane, 2-methoxy-2-methyl-	102	C6H14O	000994-05-8	78
3			2,2,4-Trimethyl-3-pentanol	130	C8H18O	005162-48-1	40
4			Hexanoic acid, 2-ethyl-	144	C8H16O2	000149-57-5	33
5			Acetamide, N-ethyl-	87	C4H9NO	000625-50-3	14



Data Path : Z:\svoasrv\HPCHEM1\BNA_P\Data\BP041522\
Data File : BP009856.D
Acq On : 15 Apr 2022 12:15
Operator : CG/JU
Sample : N2422-01
Misc :
ALS Vial : 6 Sample Multiplier: 1

Instrument :
BNA_P
ClientSampleId :
C0J08

Quant Method : Z:\svoasrv\HPCHEM1\BNA_P\Methods\SFAM-EPA-BP040722.M
Quant Title : SVOA CALIBRATION

TIC Library : C:\DATABASE\NIST20.L
TIC Integration Parameters: LSCINT.P

TIC Top Hit name	RT	EstConc	Units	Response	--Internal Standard--			
					#	RT	Resp	Conc
-----	-----	-----	-----	-----	-----	-----	-----	-----
Butane, 2-metho...	3.122	11.8	ng/u1	381703	1	7.957	646737	20.0