

Data Path : Z:\svoasrv\HPCHEM1\BNA_P\Data\BP041525\
 Data File : BP024290.D
 Acq On : 15 Apr 2025 12:02
 Operator : RC/JU
 Sample : Q1771-04
 Misc :
 ALS Vial : 6 Sample Multiplier: 1

Instrument :
 BNA_P
 ClientSampleId :
 TP-6C

Quant Time: Apr 15 12:41:23 2025
 Quant Method : Z:\svoasrv\HPCHEM1\BNA_P\Methods\8270E-BP041425.M
 Quant Title : ASP BNA STANDARDS FOR 5 POINT CALIBRATION
 QLast Update : Tue Apr 15 04:48:42 2025
 Response via : Initial Calibration

Compound	R.T.	QIon	Response	Conc	Units	Dev(Min)
Internal Standards						
1) 1,4-Dichlorobenzene-d4	7.728	152	304298	20.000	ng	0.00
21) Naphthalene-d8	10.504	136	1173992	20.000	ng	0.00
39) Acenaphthene-d10	14.363	164	661909	20.000	ng	0.00
64) Phenanthrene-d10	17.169	188	1237795	20.000	ng	-0.01
76) Chrysene-d12	21.622	240	1140995	20.000	ng	0.00
86) Perylene-d12	24.980	264	1240578	20.000	ng	0.00
System Monitoring Compounds						
5) 2-Fluorophenol	5.352	112	2298815	124.910	ng	0.00
7) Phenol-d6	6.916	99	2524977	100.198	ng	0.00
23) Nitrobenzene-d5	8.875	82	2012308	97.738	ng	0.00
42) 2,4,6-Tribromophenol	15.881	330	1204873	131.567	ng	-0.01
45) 2-Fluorobiphenyl	12.975	172	3905501	90.341	ng	0.00
79) Terphenyl-d14	19.898	244	5351873	94.544	ng	-0.02

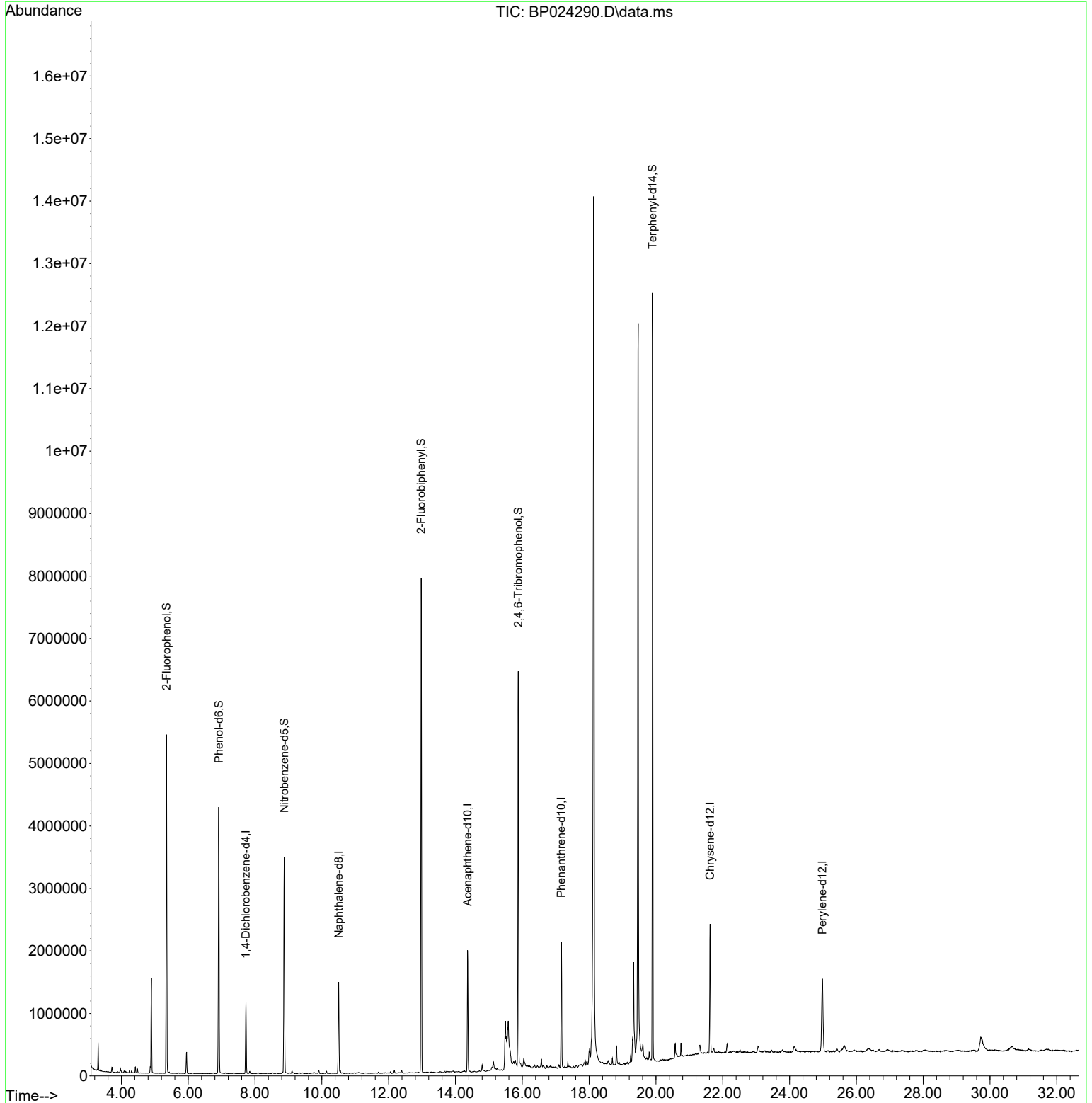
Target Compounds Qvalue

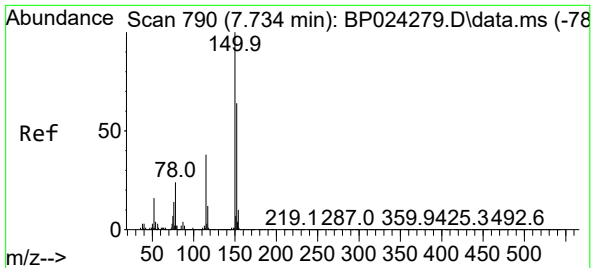
(#) = qualifier out of range (m) = manual integration (+) = signals summed

Data Path : Z:\svoasrv\HPCHEM1\BNA_P\Data\BP041525\
 Data File : BP024290.D
 Acq On : 15 Apr 2025 12:02
 Operator : RC/JU
 Sample : Q1771-04
 Misc :
 ALS Vial : 6 Sample Multiplier: 1

Instrument :
 BNA_P
 ClientSampleId :
 TP-6C

Quant Time: Apr 15 12:41:23 2025
 Quant Method : Z:\svoasrv\HPCHEM1\BNA_P\Methods\8270E-BP041425.M
 Quant Title : ASP BNA STANDARDS FOR 5 POINT CALIBRATION
 QLast Update : Tue Apr 15 04:48:42 2025
 Response via : Initial Calibration

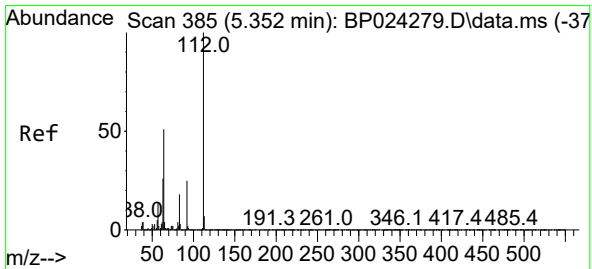
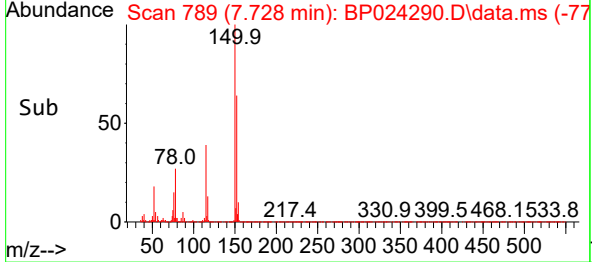
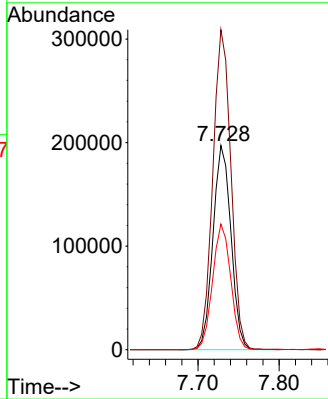
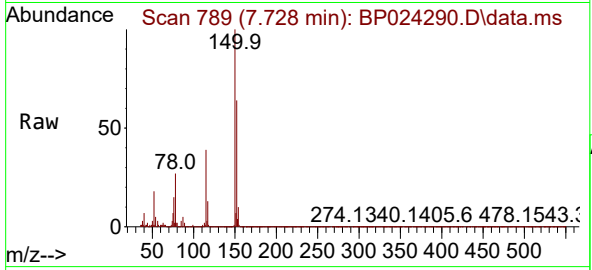




#1
 1,4-Dichlorobenzene-d4
 Concen: 20.000 ng
 RT: 7.728 min Scan# 71
 Delta R.T. 0.000 min
 Lab File: BP024290.D
 Acq: 15 Apr 2025 12:02

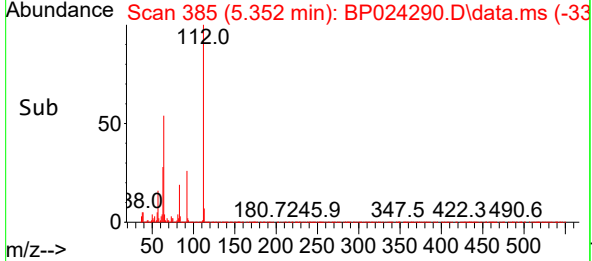
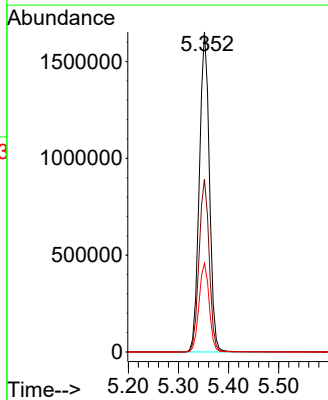
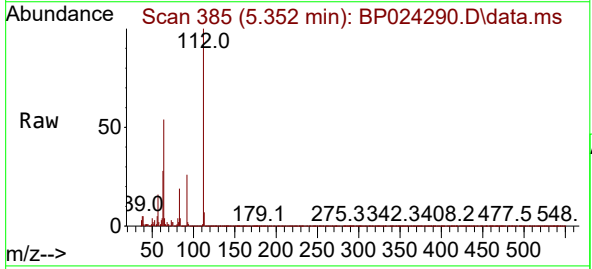
Instrument :
 BNA_P
 ClientSampleId :
 TP-6C

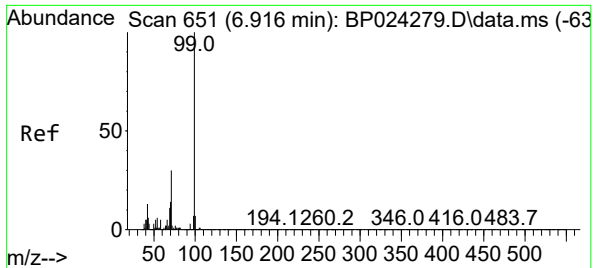
Tgt Ion:152 Resp: 304298
 Ion Ratio Lower Upper
 152 100
 150 156.8 124.9 187.3
 115 61.6 47.7 71.5



#5
 2-Fluorophenol
 Concen: 124.910 ng
 RT: 5.352 min Scan# 385
 Delta R.T. 0.000 min
 Lab File: BP024290.D
 Acq: 15 Apr 2025 12:02

Tgt Ion:112 Resp: 2298815
 Ion Ratio Lower Upper
 112 100
 64 54.0 41.1 61.7
 63 27.7 20.6 30.8



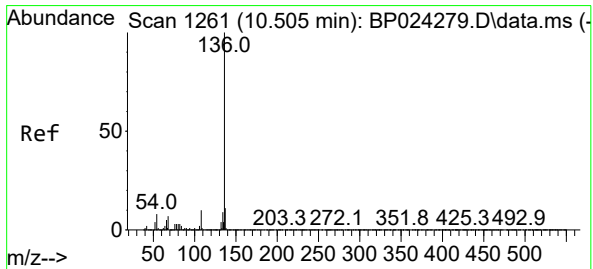
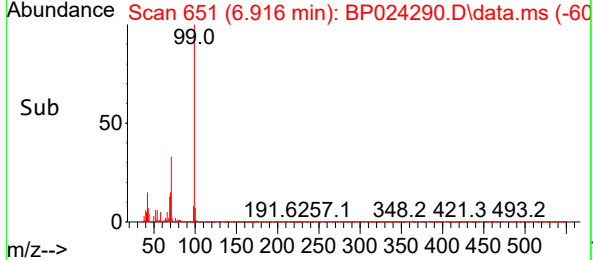
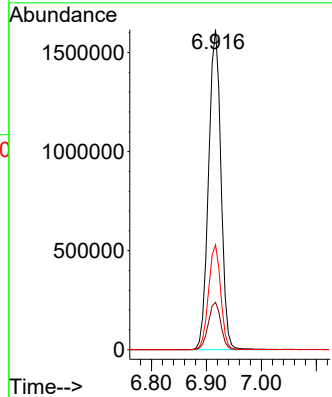
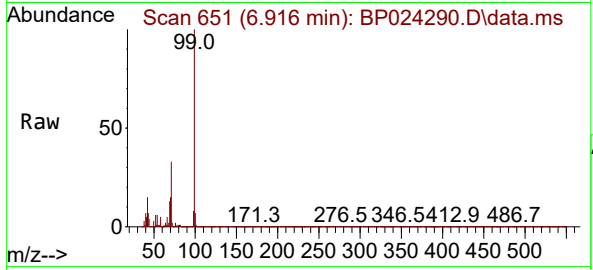


#7
 Phenol-d6
 Concen: 100.198 ng
 RT: 6.916 min Scan# 61
 Delta R.T. 0.000 min
 Lab File: BP024290.D
 Acq: 15 Apr 2025 12:02

Instrument :
 BNA_P
 ClientSampleId :
 TP-6C

Tgt Ion: 99 Resp: 2524977

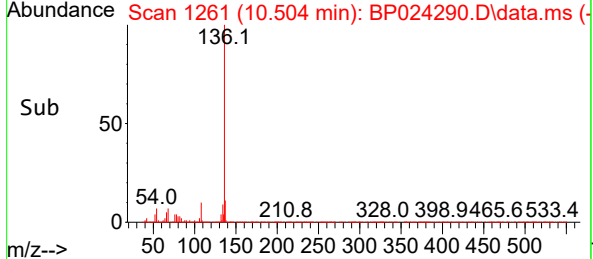
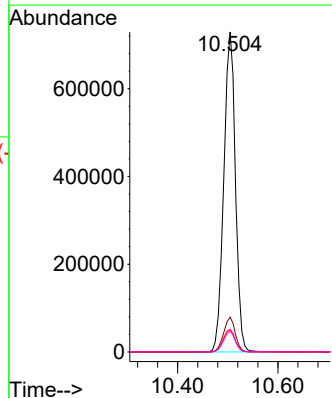
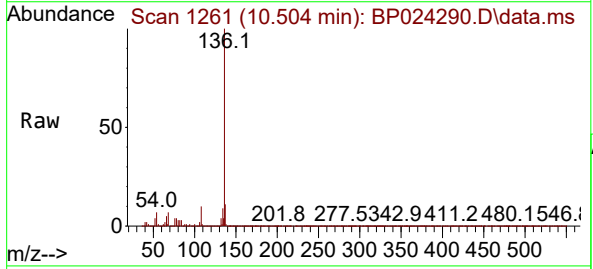
Ion	Ratio	Lower	Upper
99	100		
42	14.8	10.6	16.0
71	32.8	23.7	35.5

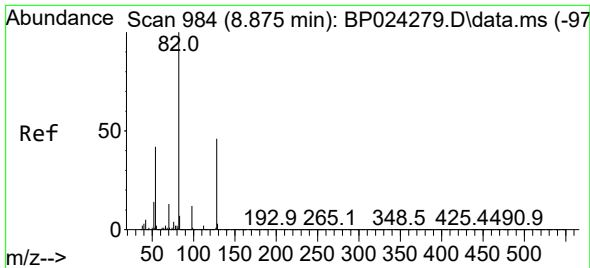


#21
 Naphthalene-d8
 Concen: 20.000 ng
 RT: 10.504 min Scan# 1261
 Delta R.T. 0.000 min
 Lab File: BP024290.D
 Acq: 15 Apr 2025 12:02

Tgt Ion:136 Resp: 1173992

Ion	Ratio	Lower	Upper
136	100		
137	10.9	9.2	13.8
54	7.1	6.0	9.0
68	6.7	5.5	8.3



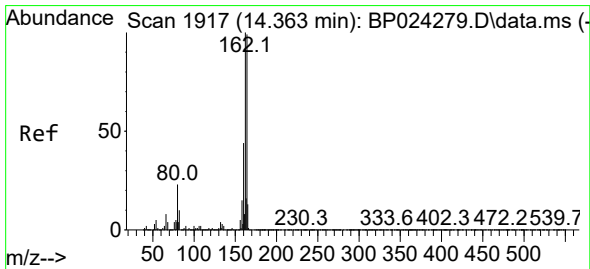
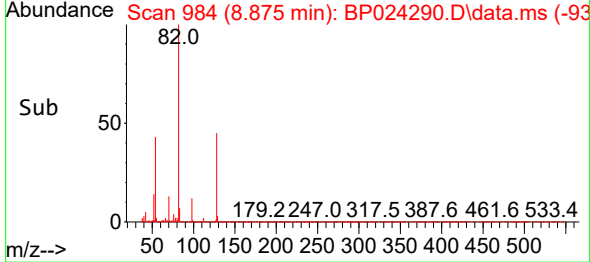
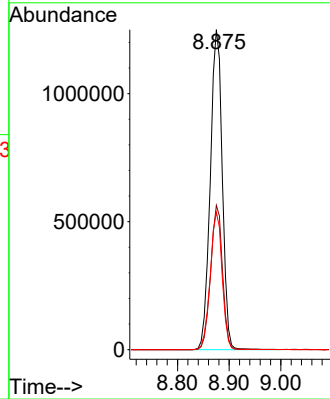
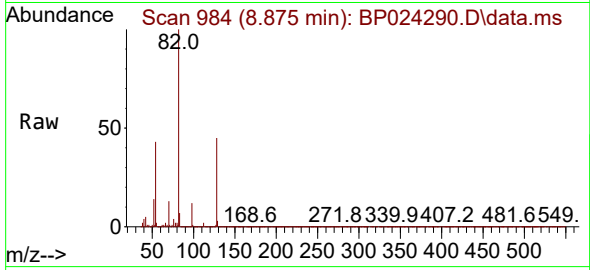


#23
 Nitrobenzene-d5
 Concen: 97.738 ng
 RT: 8.875 min Scan# 91
 Delta R.T. -0.006 min
 Lab File: BP024290.D
 Acq: 15 Apr 2025 12:02

Instrument :
 BNA_P
 ClientSampleId :
 TP-6C

Tgt Ion: 82 Resp: 2012308

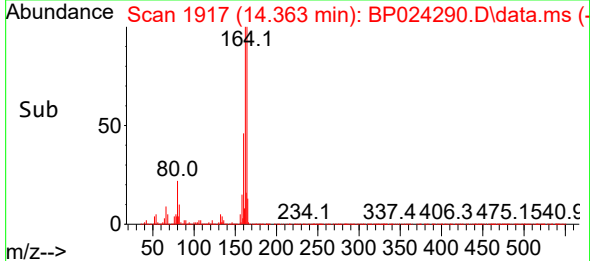
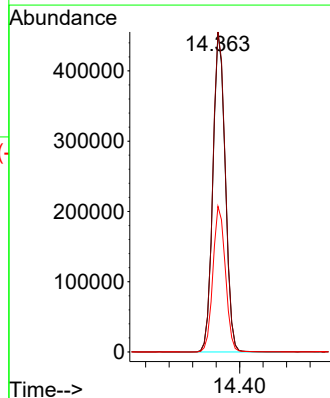
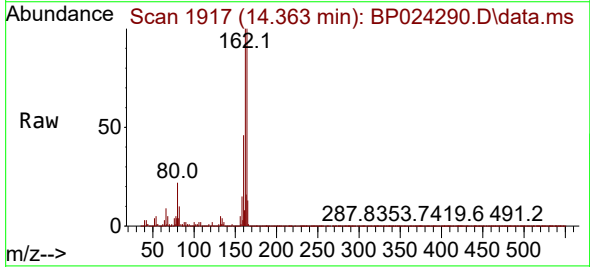
Ion	Ratio	Lower	Upper
82	100		
128	45.1	36.5	54.7
54	42.9	33.4	50.2

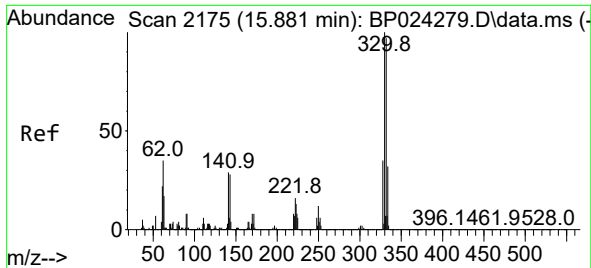


#39
 Acenaphthene-d10
 Concen: 20.000 ng
 RT: 14.363 min Scan# 1917
 Delta R.T. -0.006 min
 Lab File: BP024290.D
 Acq: 15 Apr 2025 12:02

Tgt Ion: 164 Resp: 661909

Ion	Ratio	Lower	Upper
164	100		
162	100.1	80.6	120.8
160	45.5	35.3	52.9

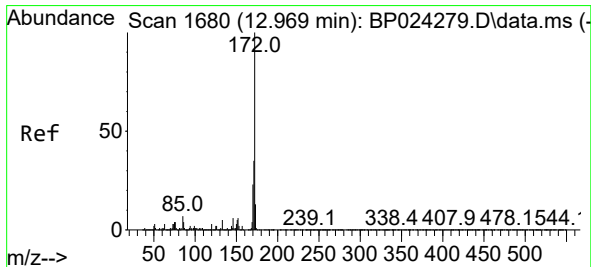
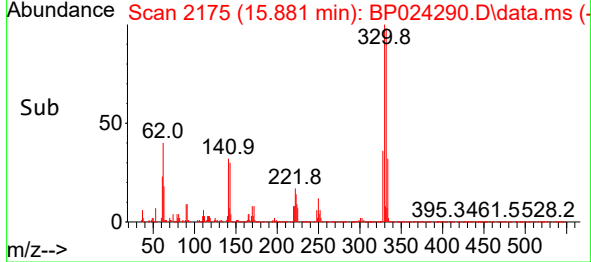
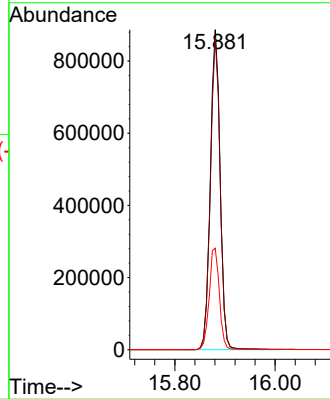
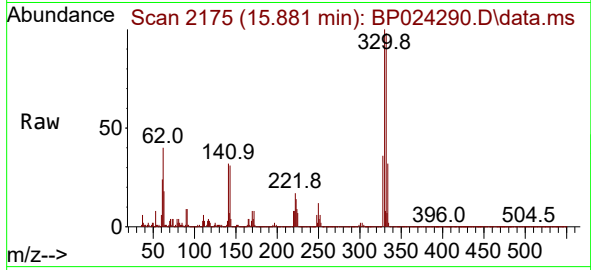




#42
 2,4,6-Tribromophenol
 Concen: 131.567 ng
 RT: 15.881 min Scan# 2175
 Delta R.T. -0.012 min
 Lab File: BP024290.D
 Acq: 15 Apr 2025 12:02

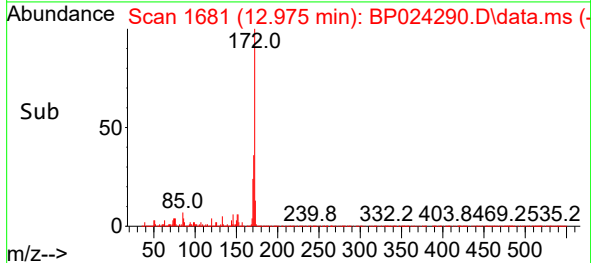
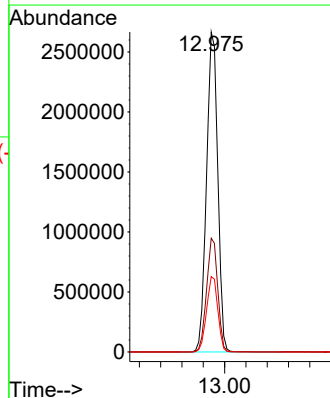
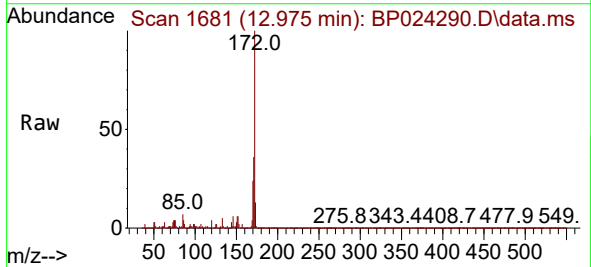
Instrument :
 BNA_P
 ClientSampleId :
 TP-6C

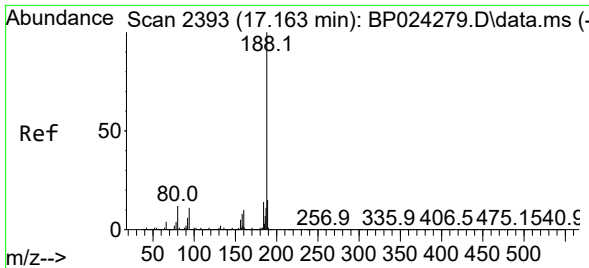
Tgt Ion:330 Resp: 1204873
 Ion Ratio Lower Upper
 330 100
 332 96.8 77.1 115.7
 141 33.0 24.7 37.1



#45
 2-Fluorobiphenyl
 Concen: 90.341 ng
 RT: 12.975 min Scan# 1681
 Delta R.T. -0.006 min
 Lab File: BP024290.D
 Acq: 15 Apr 2025 12:02

Tgt Ion:172 Resp: 3905501
 Ion Ratio Lower Upper
 172 100
 171 35.5 28.2 42.2
 170 23.5 18.6 27.8



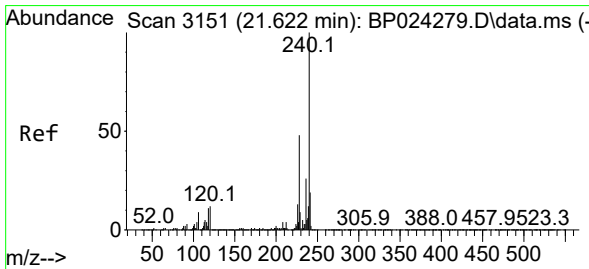
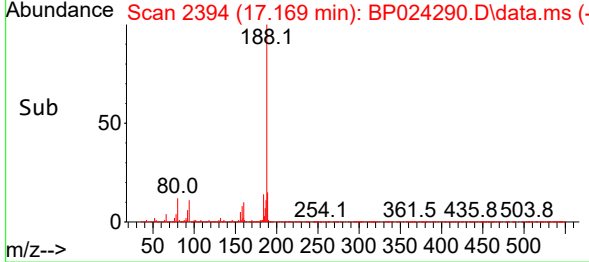
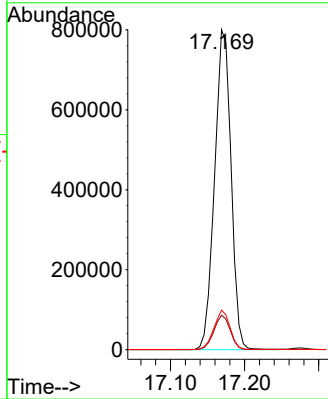
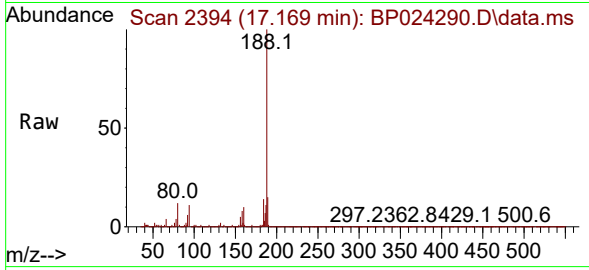


#64
 Phenanthrene-d10
 Concen: 20.000 ng
 RT: 17.169 min Scan# 21
 Delta R.T. -0.012 min
 Lab File: BP024290.D
 Acq: 15 Apr 2025 12:02

Instrument :
 BNA_P
 ClientSampleId :
 TP-6C

Tgt Ion:188 Resp: 1237795

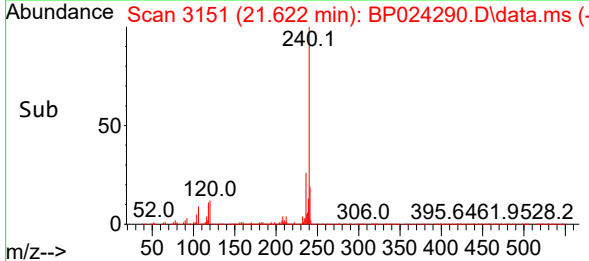
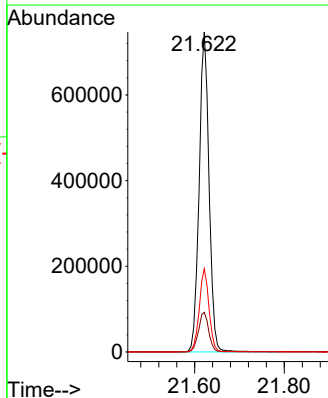
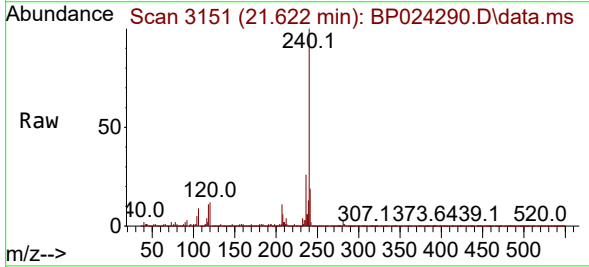
Ion	Ratio	Lower	Upper
188	100		
94	10.8	8.6	13.0
80	12.4	9.8	14.6

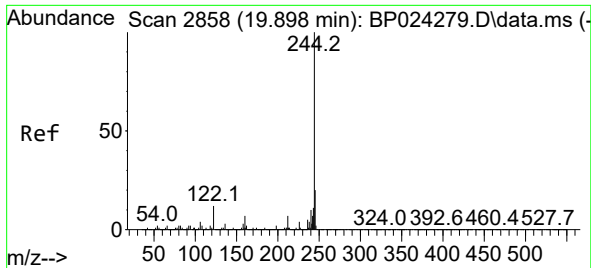


#76
 Chrysene-d12
 Concen: 20.000 ng
 RT: 21.622 min Scan# 3151
 Delta R.T. 0.000 min
 Lab File: BP024290.D
 Acq: 15 Apr 2025 12:02

Tgt Ion:240 Resp: 1140995

Ion	Ratio	Lower	Upper
240	100		
120	12.4	9.8	14.8
236	26.0	20.9	31.3



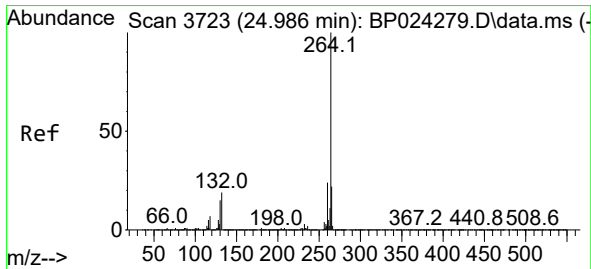
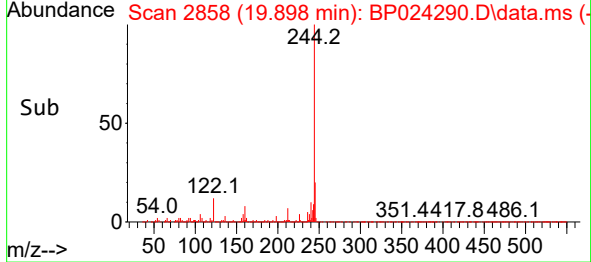
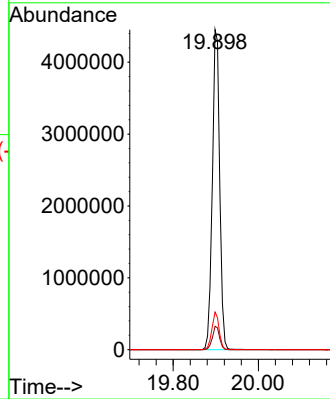
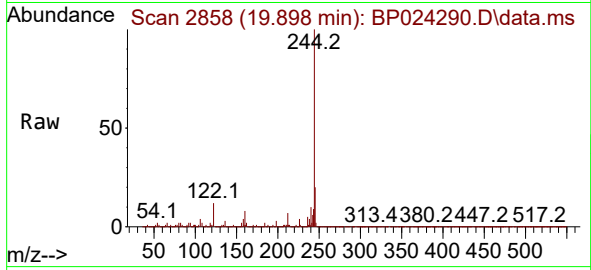


#79
 Terphenyl-d14
 Concen: 94.544 ng
 RT: 19.898 min Scan# 2858
 Delta R.T. -0.023 min
 Lab File: BP024290.D
 Acq: 15 Apr 2025 12:02

Instrument :
 BNA_P
 ClientSampleId :
 TP-6C

Tgt Ion:244 Resp: 5351873

Ion	Ratio	Lower	Upper
244	100		
212	7.3	5.6	8.4
122	11.8	9.4	14.0



#86
 Perylene-d12
 Concen: 20.000 ng
 RT: 24.980 min Scan# 3722
 Delta R.T. -0.006 min
 Lab File: BP024290.D
 Acq: 15 Apr 2025 12:02

Tgt Ion:264 Resp: 1240578

Ion	Ratio	Lower	Upper
264	100		
260	23.9	18.9	28.3
265	22.1	17.8	26.6

