

Data Path : Z:\svoasrv\HPCHEM1\BNA\_P\Data\BP041825\  
 Data File : BP024353.D  
 Acq On : 18 Apr 2025 22:11  
 Operator : RC/JU  
 Sample : Q1826-06  
 Misc :  
 ALS Vial : 18 Sample Multiplier: 1

Instrument :  
 BNA\_P  
 ClientSampleId :  
 CONCRETE-FLOOR

Quant Time: Apr 19 01:03:23 2025  
 Quant Method : Z:\svoasrv\HPCHEM1\BNA\_P\Methods\8270E-BP041425.M  
 Quant Title : ASP BNA STANDARDS FOR 5 POINT CALIBRATION  
 QLast Update : Fri Apr 18 12:04:48 2025  
 Response via : Initial Calibration

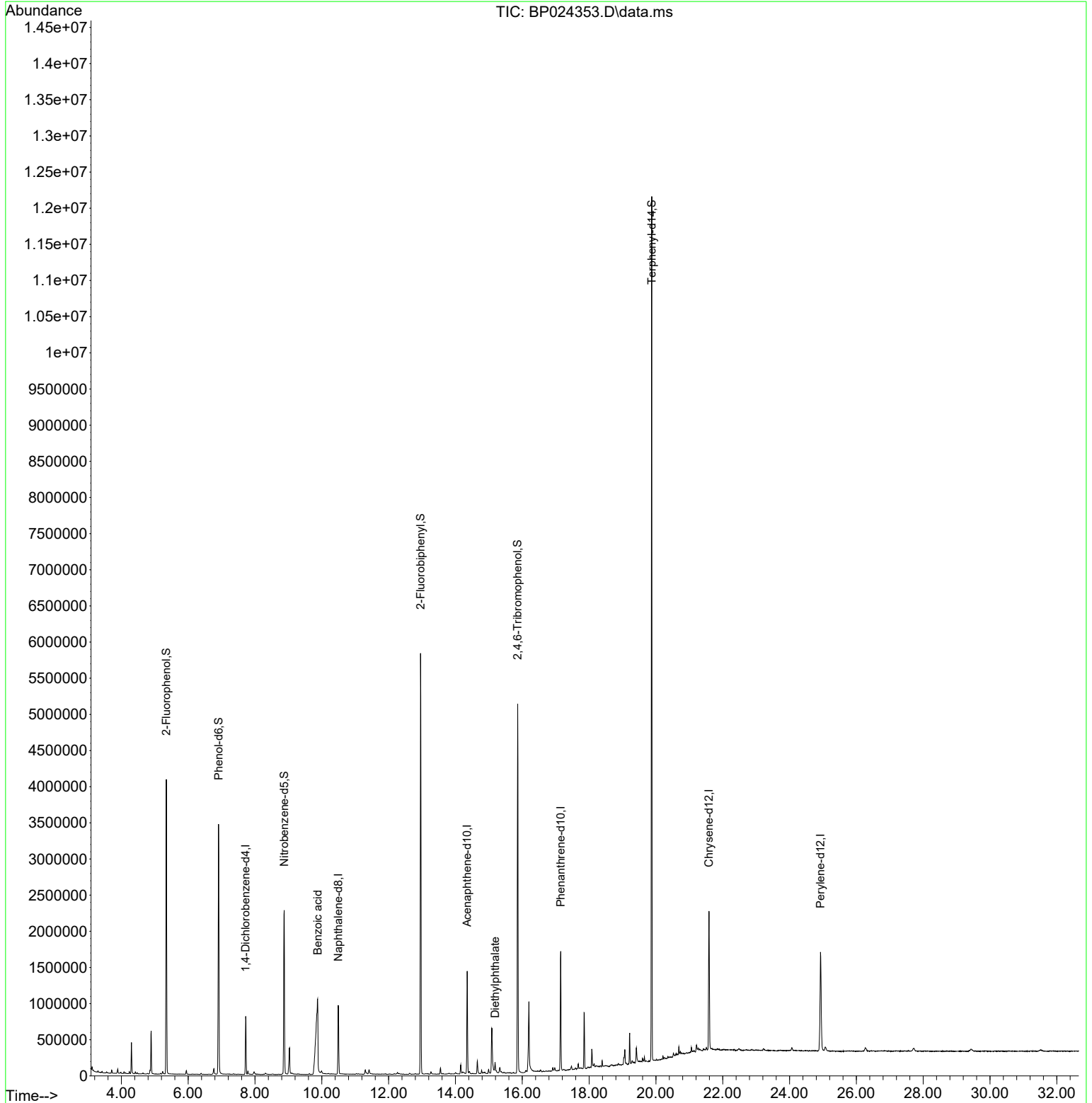
Compound	R.T.	QIon	Response	Conc	Units	Dev(Min)
Internal Standards						
1) 1,4-Dichlorobenzene-d4	7.722	152	210625	20.000	ng	0.00
21) Naphthalene-d8	10.493	136	800929	20.000	ng	0.00
39) Acenaphthene-d10	14.351	164	482510	20.000	ng	0.00
64) Phenanthrene-d10	17.151	188	968506	20.000	ng	0.00
76) Chrysene-d12	21.586	240	1192239	20.000	ng	0.00
86) Perylene-d12	24.927	264	1219953	20.000	ng	0.00
System Monitoring Compounds						
5) 2-Fluorophenol	5.346	112	1766871	138.703	ng	0.00
7) Phenol-d6	6.910	99	2133600	122.322	ng	0.00
23) Nitrobenzene-d5	8.875	82	1333006	94.902	ng	0.00
42) 2,4,6-Tribromophenol	15.863	330	1010436	151.358	ng	0.00
45) 2-Fluorobiphenyl	12.957	172	2810751	89.191	ng	0.00
79) Terphenyl-d14	19.874	244	5328656	90.088	ng	0.00
Target Compounds						
32) Benzoic acid	9.875	122	926466	93.122	ng	99
60) Diethylphthalate	15.186	149	94379	2.610	ng	98

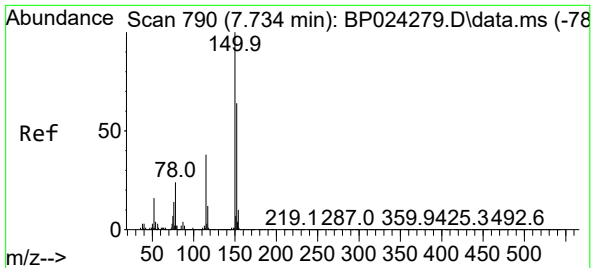
(#) = qualifier out of range (m) = manual integration (+) = signals summed

Data Path : Z:\svoasrv\HPCHEM1\BNA\_P\Data\BP041825\  
 Data File : BP024353.D  
 Acq On : 18 Apr 2025 22:11  
 Operator : RC/JU  
 Sample : Q1826-06  
 Misc :  
 ALS Vial : 18 Sample Multiplier: 1

Instrument :  
 BNA\_P  
 ClientSampleId :  
 CONCRETE-FLOOR

Quant Time: Apr 19 01:03:23 2025  
 Quant Method : Z:\svoasrv\HPCHEM1\BNA\_P\Methods\8270E-BP041425.M  
 Quant Title : ASP BNA STANDARDS FOR 5 POINT CALIBRATION  
 QLast Update : Fri Apr 18 12:04:48 2025  
 Response via : Initial Calibration



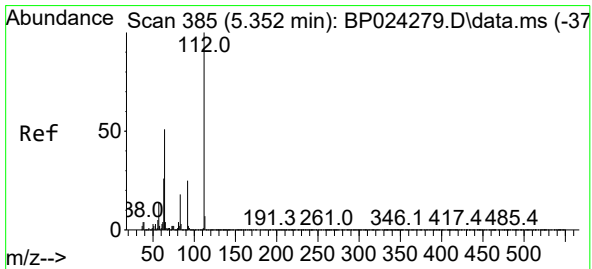
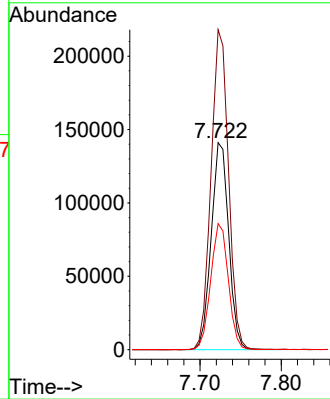
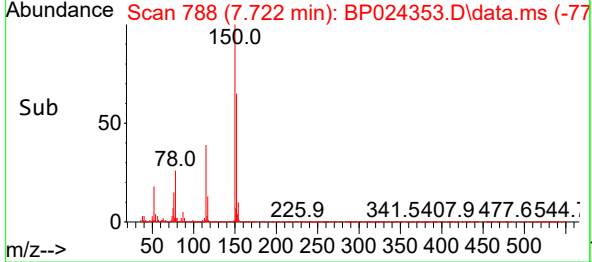
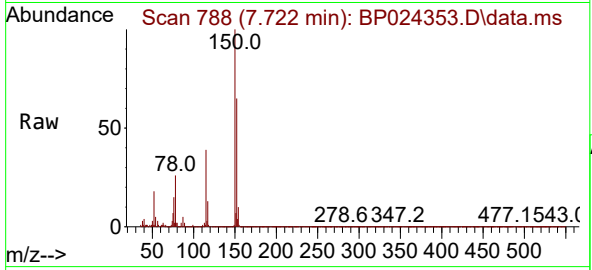


#1  
 1,4-Dichlorobenzene-d4  
 Concen: 20.000 ng  
 RT: 7.722 min Scan# 71  
 Delta R.T. 0.000 min  
 Lab File: BP024353.D  
 Acq: 18 Apr 2025 22:11

Instrument :  
 BNA\_P  
 ClientSampleId :  
 CONCRETE-FLOOR

Tgt Ion:152 Resp: 210625

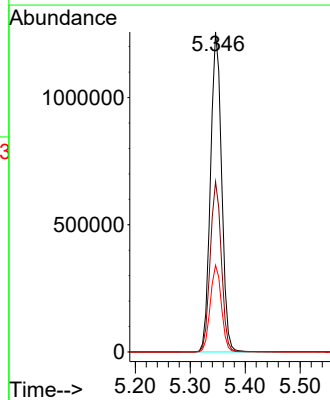
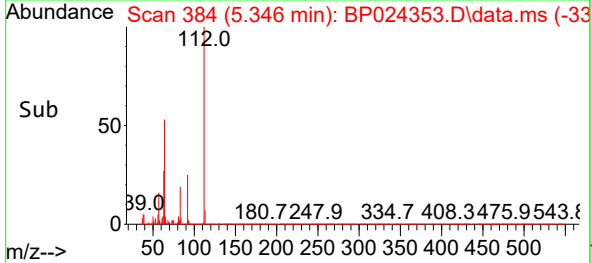
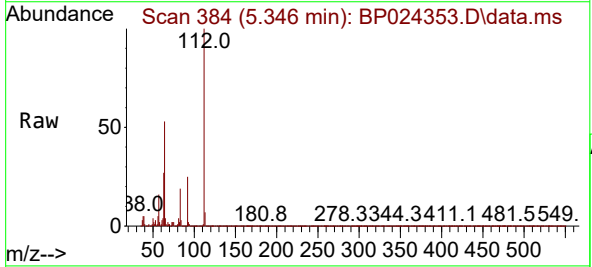
Ion	Ratio	Lower	Upper
152	100		
150	154.6	124.9	187.3
115	60.9	47.7	71.5

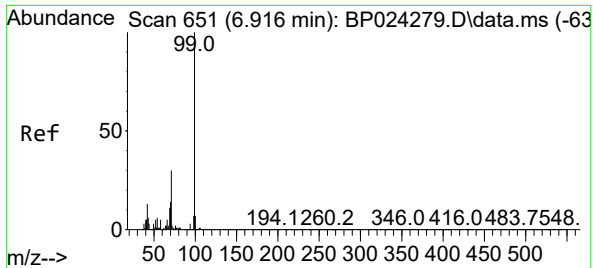


#5  
 2-Fluorophenol  
 Concen: 138.703 ng  
 RT: 5.346 min Scan# 384  
 Delta R.T. 0.000 min  
 Lab File: BP024353.D  
 Acq: 18 Apr 2025 22:11

Tgt Ion:112 Resp: 1766871

Ion	Ratio	Lower	Upper
112	100		
64	53.2	41.1	61.7
63	27.1	20.6	30.8



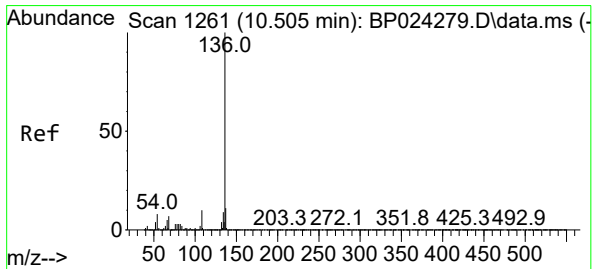
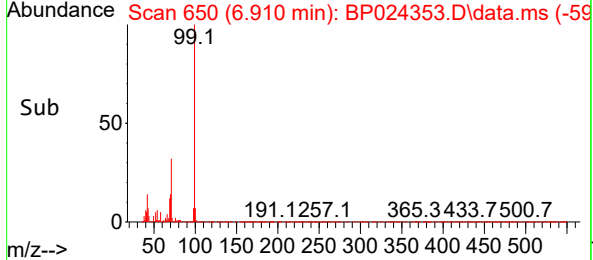
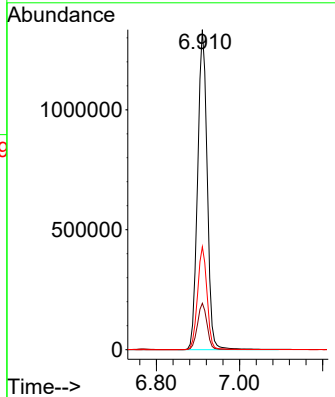
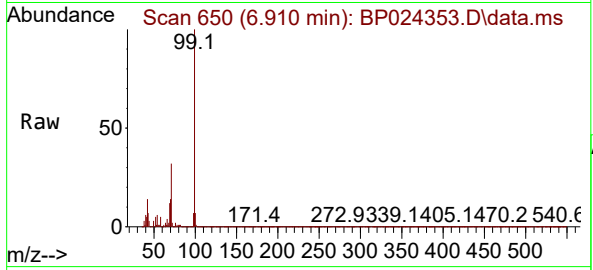


#7  
 Phenol-d6  
 Concen: 122.322 ng  
 RT: 6.910 min Scan# 61  
 Delta R.T. 0.000 min  
 Lab File: BP024353.D  
 Acq: 18 Apr 2025 22:11

Instrument : BNA\_P  
 ClientSampleId : CONCRETE-FLOOR

Tgt Ion: 99 Resp: 2133600

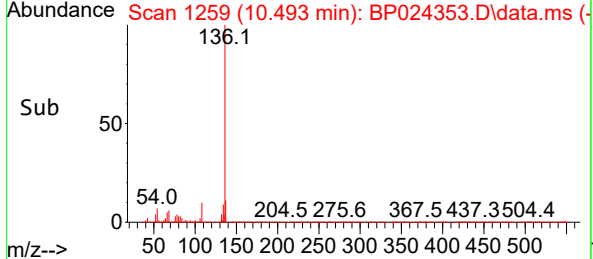
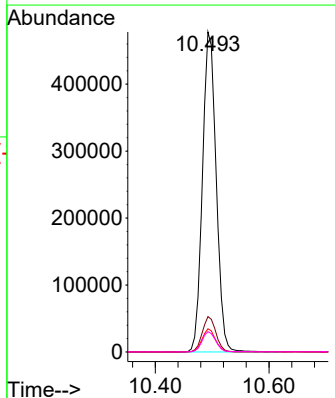
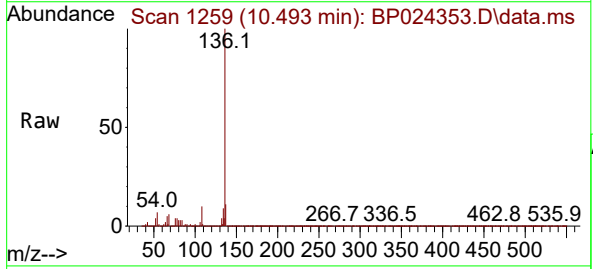
Ion	Ratio	Lower	Upper
99	100		
42	14.5	10.6	16.0
71	32.2	23.7	35.5

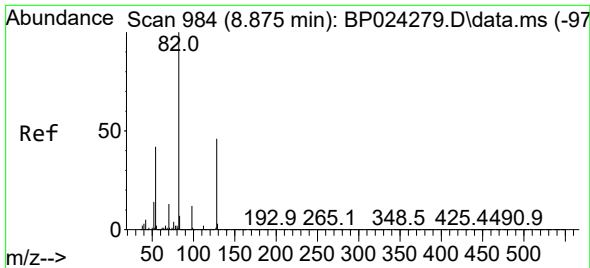


#21  
 Naphthalene-d8  
 Concen: 20.000 ng  
 RT: 10.493 min Scan# 1259  
 Delta R.T. -0.006 min  
 Lab File: BP024353.D  
 Acq: 18 Apr 2025 22:11

Tgt Ion:136 Resp: 800929

Ion	Ratio	Lower	Upper
136	100		
137	11.1	9.2	13.8
54	7.2	6.0	9.0
68	6.3	5.5	8.3



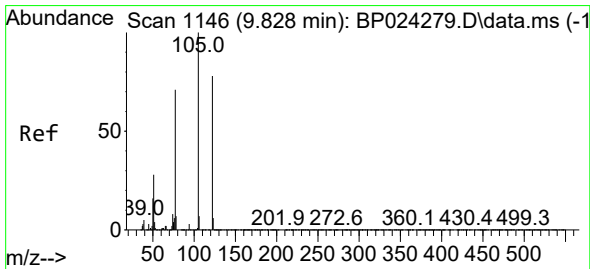
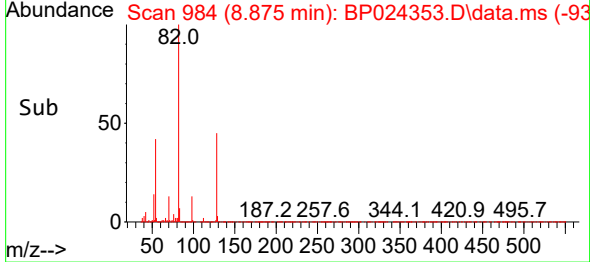
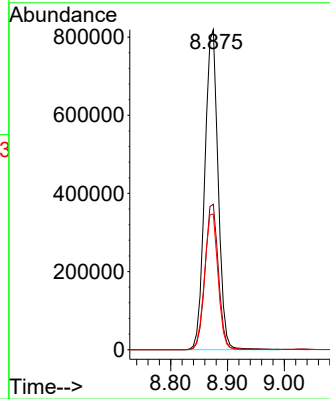
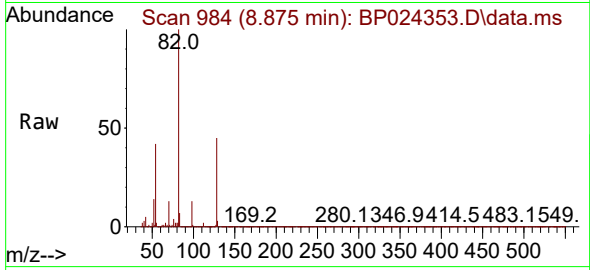


#23  
 Nitrobenzene-d5  
 Concen: 94.902 ng  
 RT: 8.875 min Scan# 91  
 Delta R.T. 0.006 min  
 Lab File: BP024353.D  
 Acq: 18 Apr 2025 22:11

Instrument :  
 BNA\_P  
 ClientSampleId :  
 CONCRETE-FLOOR

Tgt Ion: 82 Resp: 1333006

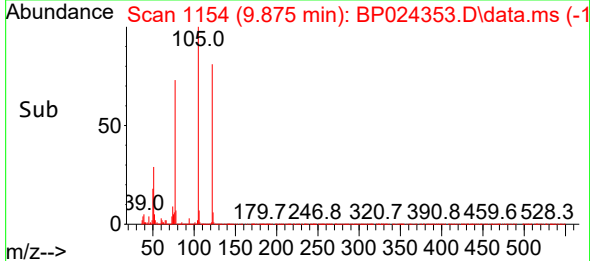
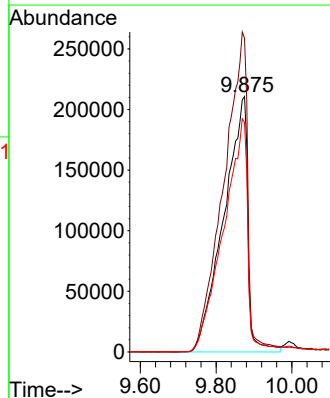
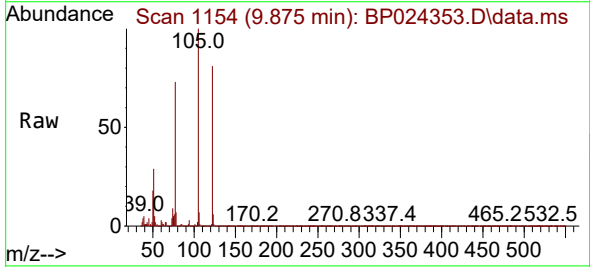
Ion	Ratio	Lower	Upper
82	100		
128	45.4	36.5	54.7
54	42.4	33.4	50.2

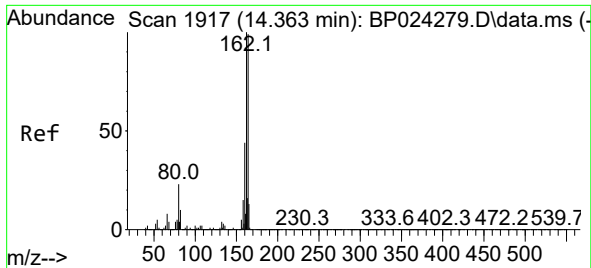


#32  
 Benzoic acid  
 Concen: 93.122 ng  
 RT: 9.875 min Scan# 1154  
 Delta R.T. 0.053 min  
 Lab File: BP024353.D  
 Acq: 18 Apr 2025 22:11

Tgt Ion: 122 Resp: 926466

Ion	Ratio	Lower	Upper
122	100		
105	122.8	104.8	144.8
77	89.8	69.2	109.2

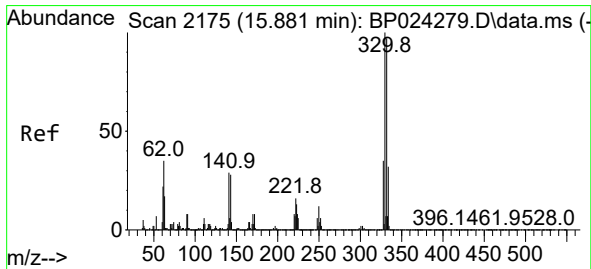
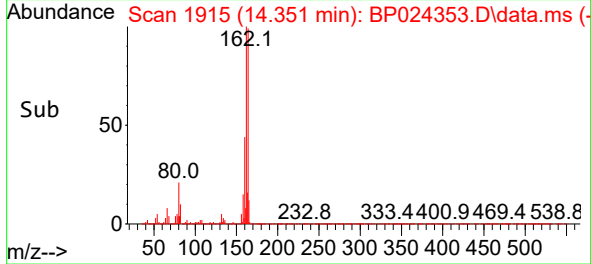
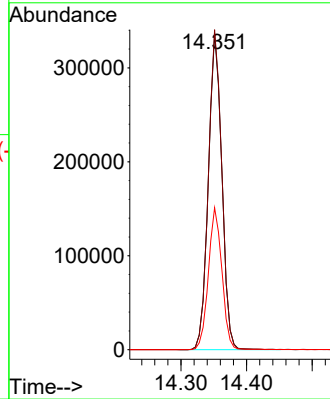
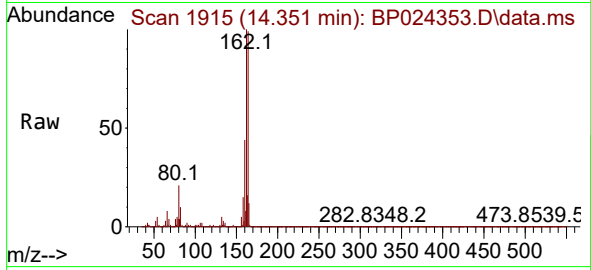




#39  
 Acenaphthene-d10  
 Concen: 20.000 ng  
 RT: 14.351 min Scan# 1915  
 Delta R.T. 0.000 min  
 Lab File: BP024353.D  
 Acq: 18 Apr 2025 22:11

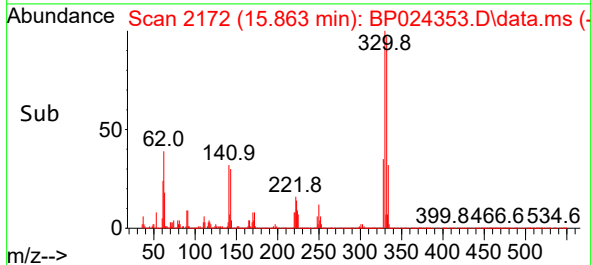
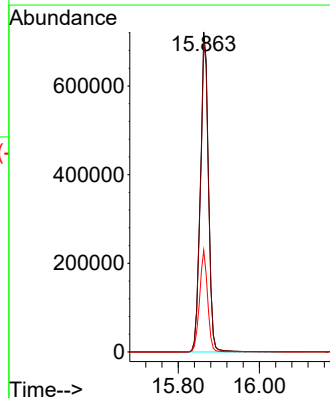
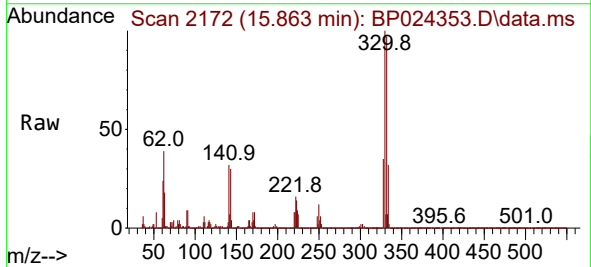
Instrument :  
 BNA\_P  
 ClientSampleId :  
 CONCRETE-FLOOR

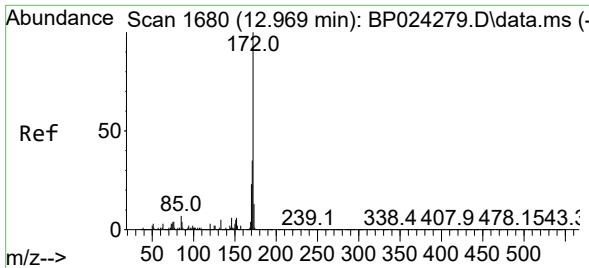
Tgt Ion:164 Resp: 482510  
 Ion Ratio Lower Upper  
 164 100  
 162 101.3 80.6 120.8  
 160 44.9 35.3 52.9



#42  
 2,4,6-Tribromophenol  
 Concen: 151.358 ng  
 RT: 15.863 min Scan# 2172  
 Delta R.T. 0.000 min  
 Lab File: BP024353.D  
 Acq: 18 Apr 2025 22:11

Tgt Ion:330 Resp: 1010436  
 Ion Ratio Lower Upper  
 330 100  
 332 96.6 77.1 115.7  
 141 31.3 24.7 37.1



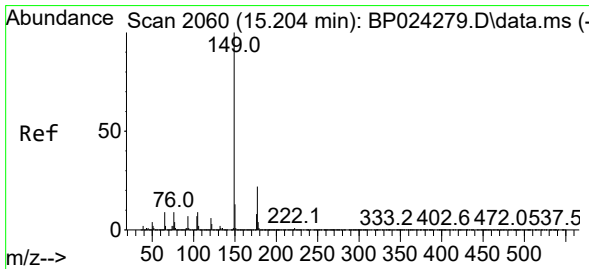
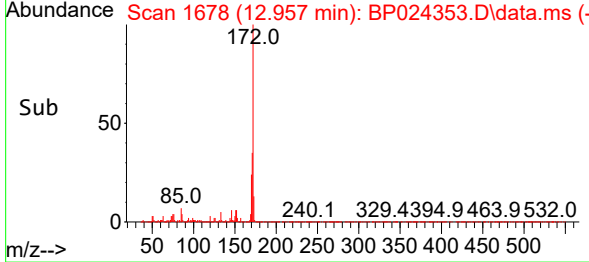
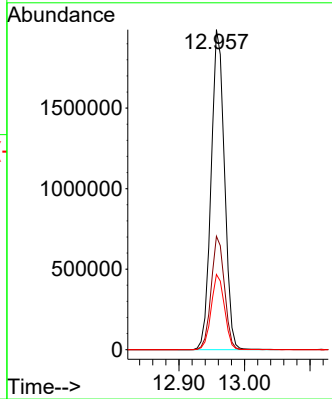
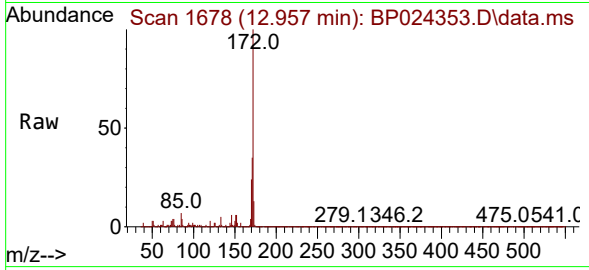


#45  
 2-Fluorobiphenyl  
 Concen: 89.191 ng  
 RT: 12.957 min Scan# 10  
 Delta R.T. -0.006 min  
 Lab File: BP024353.D  
 Acq: 18 Apr 2025 22:11

Instrument : BNA\_P  
 ClientSampleId : CONCRETE-FLOOR

Tgt Ion:172 Resp: 2810751

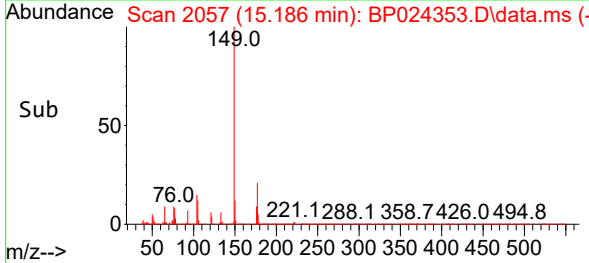
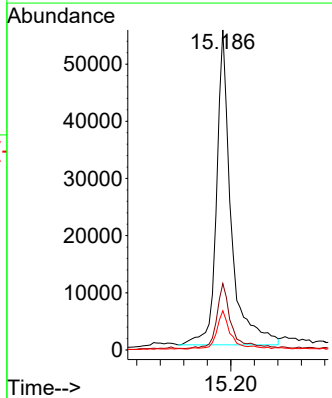
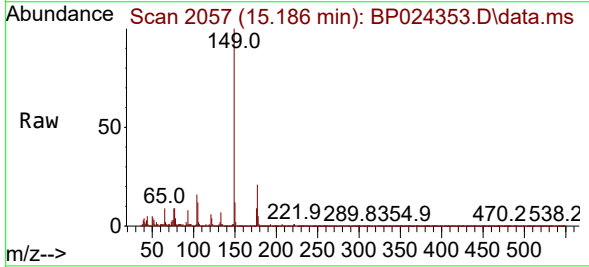
Ion	Ratio	Lower	Upper
172	100		
171	35.4	28.2	42.2
170	23.5	18.6	27.8

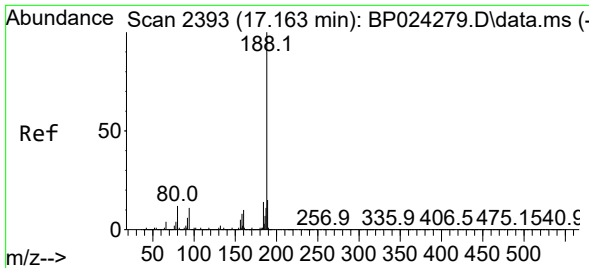


#60  
 Diethylphthalate  
 Concen: 2.610 ng  
 RT: 15.186 min Scan# 2057  
 Delta R.T. -0.006 min  
 Lab File: BP024353.D  
 Acq: 18 Apr 2025 22:11

Tgt Ion:149 Resp: 94379

Ion	Ratio	Lower	Upper
149	100		
177	20.8	17.4	26.2
150	12.3	10.1	15.1

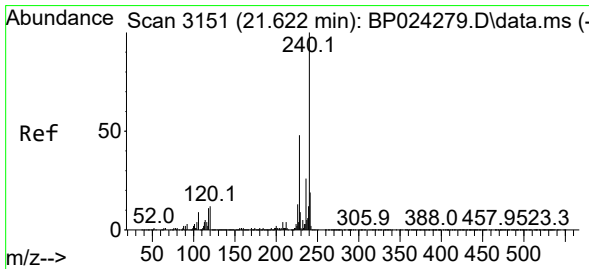
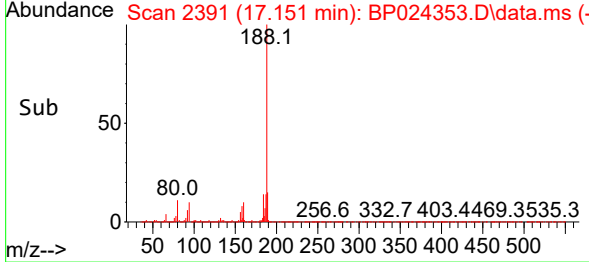
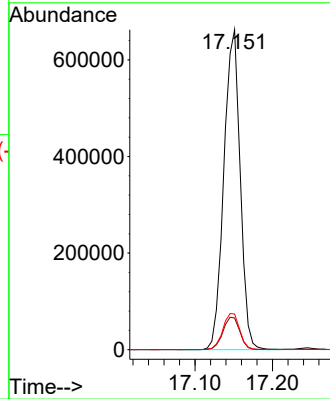
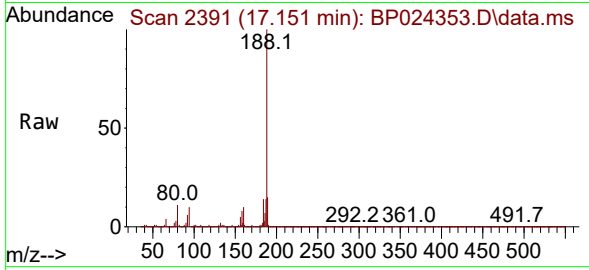




#64  
 Phenanthrene-d10  
 Concen: 20.000 ng  
 RT: 17.151 min Scan# 21  
 Delta R.T. 0.006 min  
 Lab File: BP024353.D  
 Acq: 18 Apr 2025 22:11

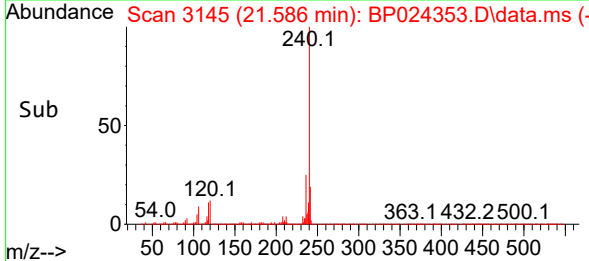
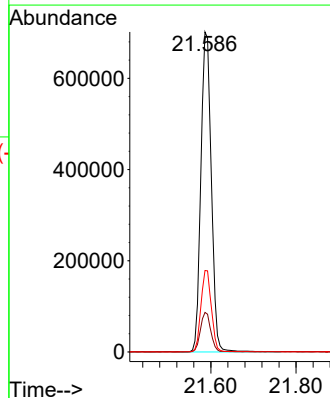
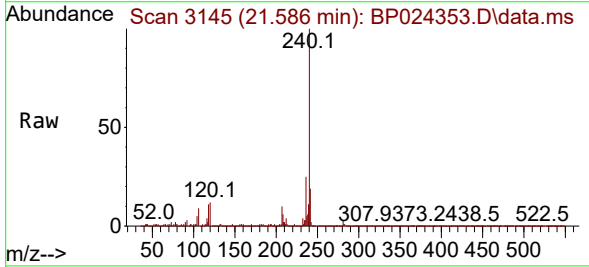
Instrument :  
 BNA\_P  
 ClientSampleId :  
 CONCRETE-FLOOR

Tgt Ion	Resp	Lower	Upper
188	968506		
94	9.9	8.6	13.0
80	11.1	9.8	14.6

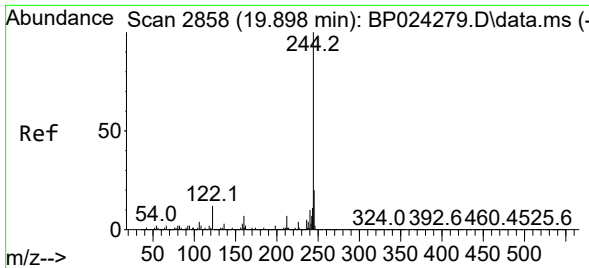


#76  
 Chrysene-d12  
 Concen: 20.000 ng  
 RT: 21.586 min Scan# 3145  
 Delta R.T. -0.006 min  
 Lab File: BP024353.D  
 Acq: 18 Apr 2025 22:11

Tgt Ion	Resp	Lower	Upper
240	1192239		
120	12.3	9.8	14.8
236	25.4	20.9	31.3





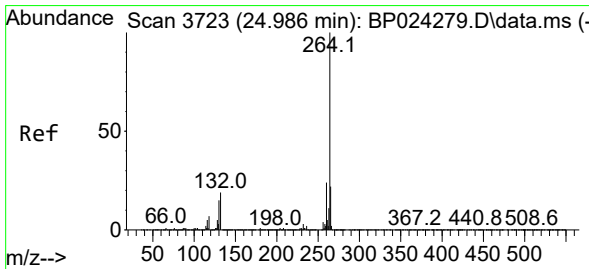
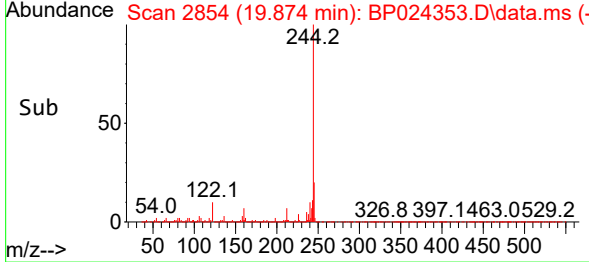
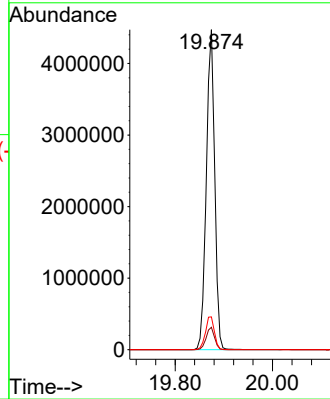
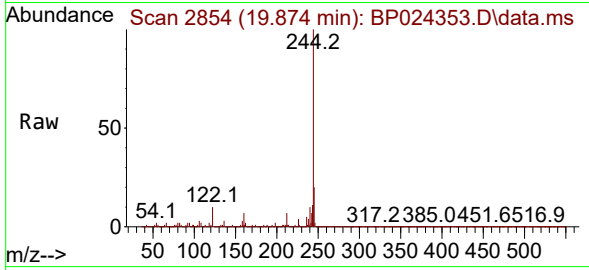


#79  
 Terphenyl-d14  
 Concen: 90.088 ng  
 RT: 19.874 min Scan# 21  
 Delta R.T. 0.000 min  
 Lab File: BP024353.D  
 Acq: 18 Apr 2025 22:11

Instrument : BNA\_P  
 Client Sample Id : CONCRETE-FLOOR

Tgt Ion: 244 Resp: 5328656

Ion	Ratio	Lower	Upper
244	100		
212	7.0	5.6	8.4
122	10.3	9.4	14.0



#86  
 Perylene-d12  
 Concen: 20.000 ng  
 RT: 24.927 min Scan# 3713  
 Delta R.T. -0.006 min  
 Lab File: BP024353.D  
 Acq: 18 Apr 2025 22:11

Tgt Ion: 264 Resp: 1219953

Ion	Ratio	Lower	Upper
264	100		
260	24.3	18.9	28.3
265	21.8	17.8	26.6

