

Data Path : Z:\svoasrv\HPCHEM1\BNA_P\Data\BP041825\
 Data File : BP024338.D
 Acq On : 18 Apr 2025 11:54
 Operator : RC/JU
 Sample : PB167625BL
 Misc :
 ALS Vial : 3 Sample Multiplier: 1

Instrument :
 BNA_P
 ClientSampleId :
 PB167625BL

Integration Parameters: rteint.p
 Integrator: RTE
 Smoothing : ON Filtering: 5
 Sampling : 1 Min Area: 3 % of largest Peak
 Start Thrs: 0.2 Max Peaks: 100
 Stop Thrs : 0 Peak Location: TOP

If leading or trailing edge < 100 prefer < Baseline drop else tangent >
 Peak separation: 5

Method : Z:\svoasrv\HPCHEM1\BNA_P\Methods\8270E-BP041425.M
 Title : ASP BNA STANDARDS FOR 5 POINT CALIBRATION

Signal : TIC: BP024338.D\data.ms

peak #	R.T. min	first scan	max scan	last scan	PK TY	peak height	corr. area	corr. % max.	% of total
1	4.305	202	207	215	rBV	288131	383932	2.64%	0.547%
2	4.893	301	307	321	rBV	2126732	2878584	19.77%	4.104%
3	5.346	378	384	399	rBV	4805244	6868483	47.18%	9.792%
4	5.946	480	486	496	rVB	463892	636912	4.38%	0.908%
5	6.917	642	651	671	rBV	4193761	6904502	47.43%	9.843%
6	7.728	779	789	798	rBV	897160	1405201	9.65%	2.003%
7	8.869	975	983	998	rBV	2692029	4467265	30.69%	6.369%
8	10.499	1252	1260	1271	rBV	1143585	1924391	13.22%	2.744%
9	12.969	1671	1680	1698	rBV	6999985	10271246	70.56%	14.643%
10	14.357	1909	1916	1936	rBV	1840085	2514649	17.27%	3.585%
11	15.881	2167	2175	2196	rBV	5091290	8110437	55.71%	11.563%
12	17.163	2386	2393	2408	rBV	2046949	2802680	19.25%	3.996%
13	19.881	2849	2855	2871	rBV	10467486	14557499	100.00%	20.754%
14	21.610	3143	3149	3161	rVB	1886796	3074072	21.12%	4.383%
15	24.939	3708	3715	3731	rVB2	1236685	3343136	22.97%	4.766%

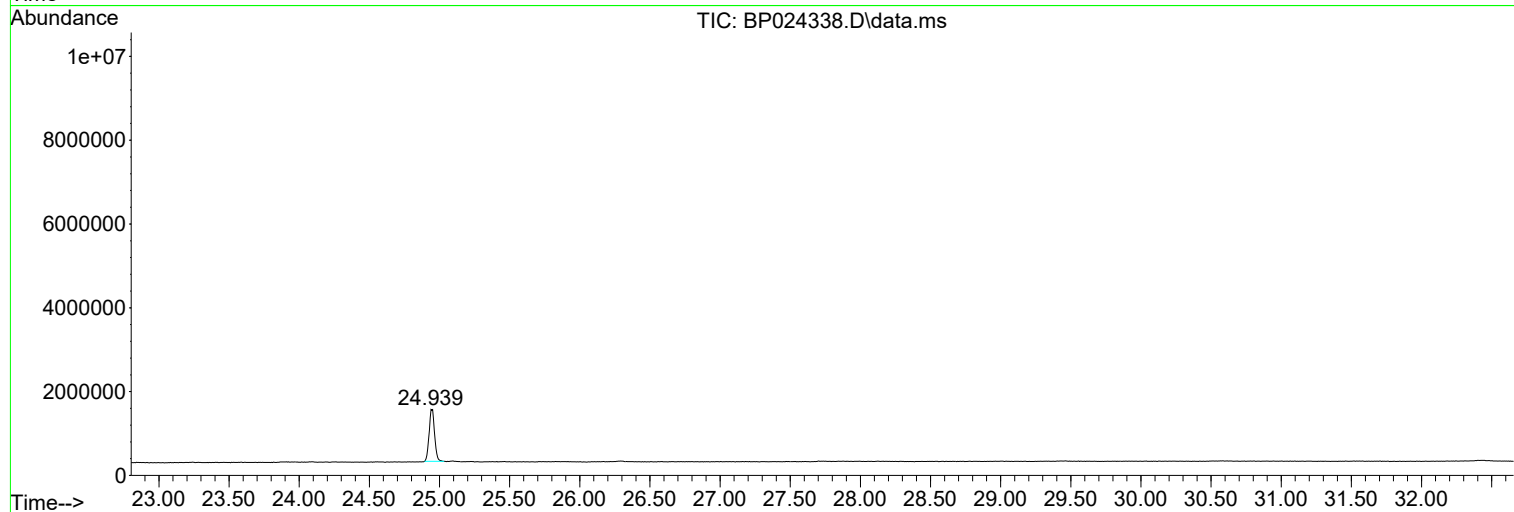
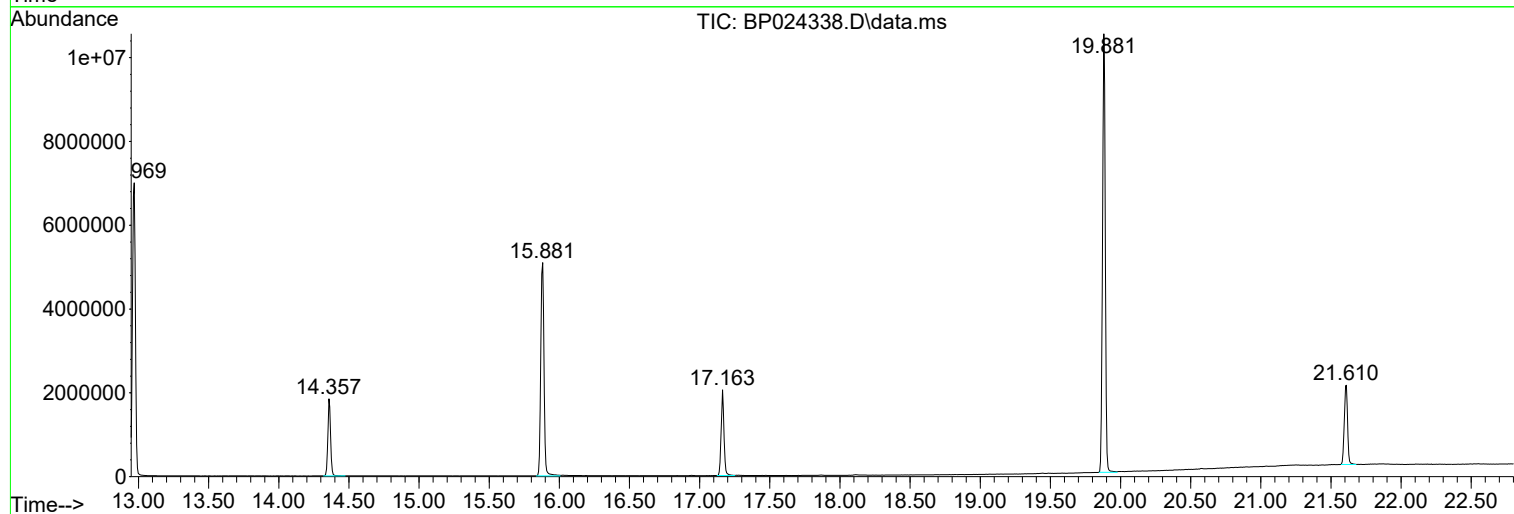
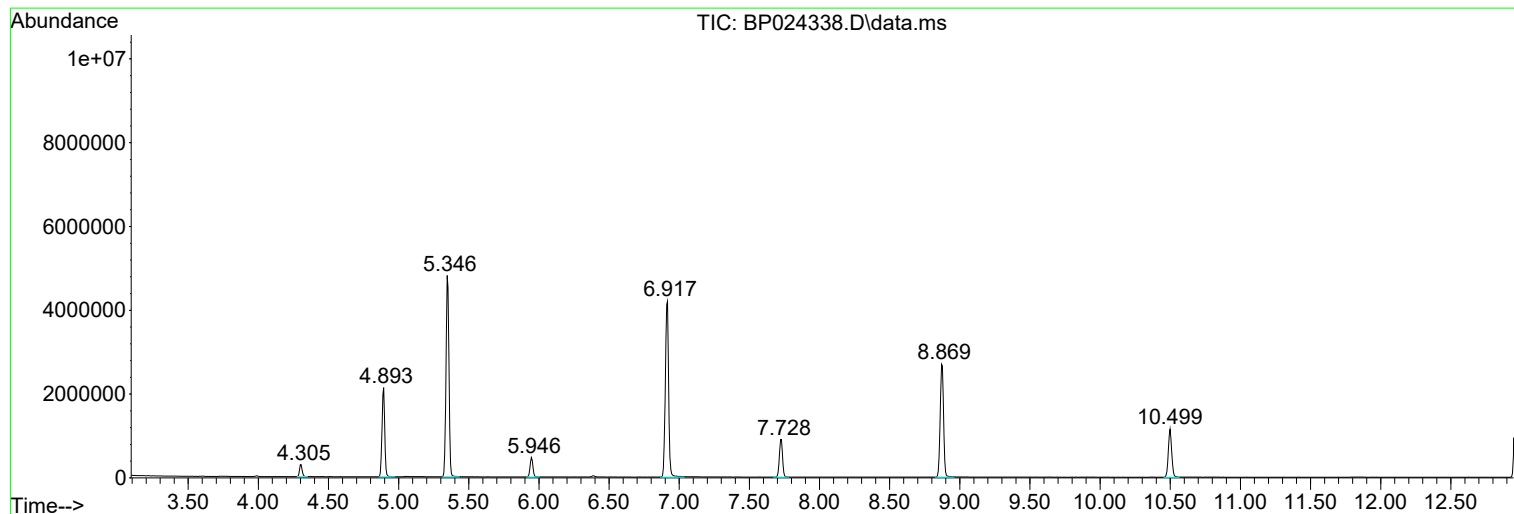
Sum of corrected areas: 70142989

Data Path : Z:\svoasrv\HPCHEM1\BNA_P\Data\BP041825\
Data File : BP024338.D
Acq On : 18 Apr 2025 11:54
Operator : RC/JU
Sample : PB167625BL
Misc :
ALS Vial : 3 Sample Multiplier: 1

Instrument :
BNA_P
ClientSampleId :
PB167625BL

Quant Method : Z:\svoasrv\HPCHEM1\BNA_P\Methods\8270E-BP041425.M
Quant Title : ASP BNA STANDARDS FOR 5 POINT CALIBRATION

TIC Library : C:\Database\NIST20.L
TIC Integration Parameters: LSCINT.P



Data Path : Z:\svoasrv\HPCHEM1\BNA_P\Data\BP041825\
 Data File : BP024338.D
 Acq On : 18 Apr 2025 11:54
 Operator : RC/JU
 Sample : PB167625BL
 Misc :
 ALS Vial : 3 Sample Multiplier: 1

Instrument :
 BNA_P
 ClientSampleId :
 PB167625BL

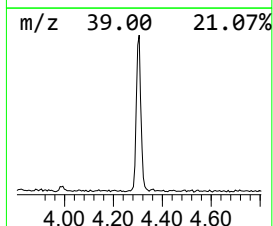
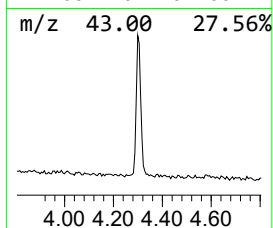
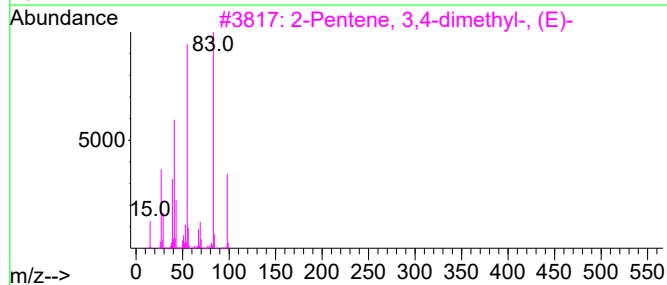
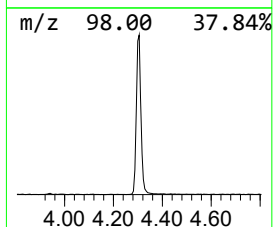
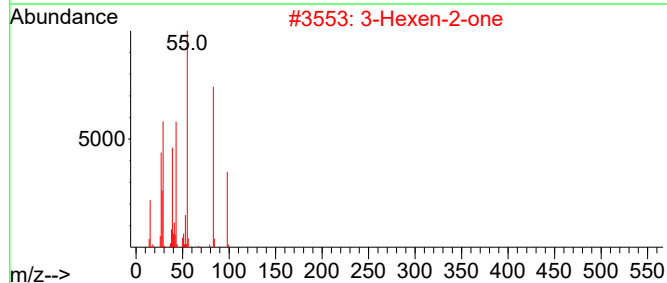
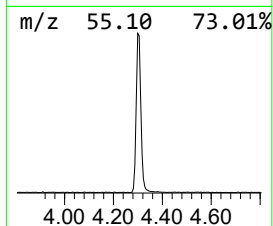
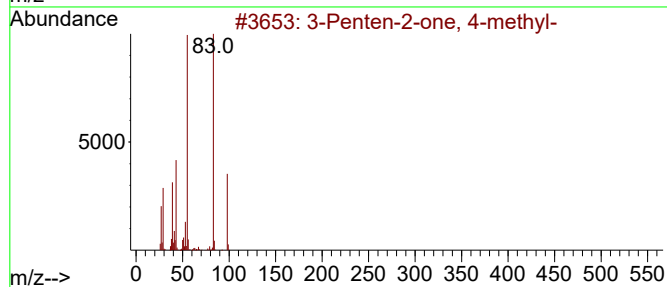
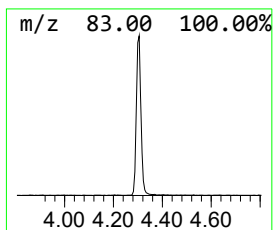
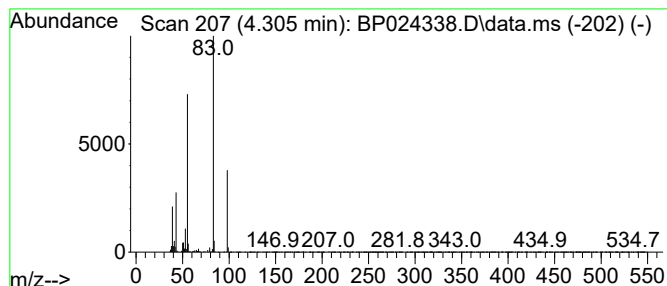
Quant Method : Z:\svoasrv\HPCHEM1\BNA_P\Methods\8270E-BP041425.M
 Quant Title : ASP BNA STANDARDS FOR 5 POINT CALIBRATION

TIC Library : C:\Database\NIST20.L
 TIC Integration Parameters: LSCINT.P

 Peak Number 1 3-Penten-2-one, 4-methyl- Concentration Rank 3

R.T.	EstConc	Area	Relative to ISTD	R.T.
4.305	5.46 ng	383932	1,4-Dichlorobenzene-d4	7.728

Hit#	of 5	Tentative ID	MW	MolForm	CAS#	Qual
1		3-Penten-2-one, 4-methyl-	98	C6H10O	000141-79-7	91
2		3-Hexen-2-one	98	C6H10O	000763-93-9	91
3		2-Pentene, 3,4-dimethyl-, (E)-	98	C7H14	004914-92-5	90
4		Furan, 2-methoxy-	98	C5H6O2	025414-22-6	78
5		2-Pentene, 2,3-dimethyl-	98	C7H14	010574-37-5	72



Data Path : Z:\svoasrv\HPCHEM1\BNA_P\Data\BP041825\
 Data File : BP024338.D
 Acq On : 18 Apr 2025 11:54
 Operator : RC/JU
 Sample : PB167625BL
 Misc :
 ALS Vial : 3 Sample Multiplier: 1

Instrument :
 BNA_P
 ClientSampleId :
 PB167625BL

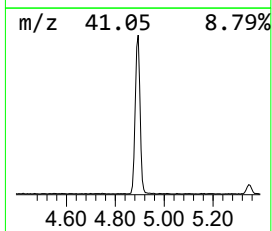
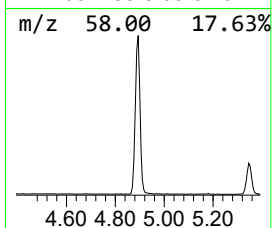
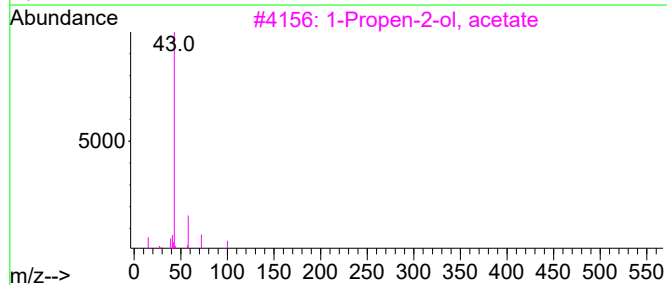
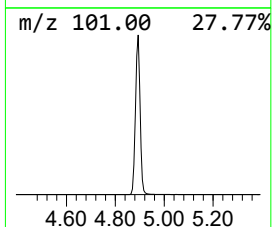
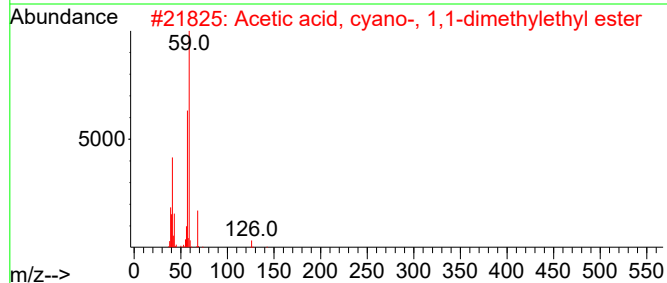
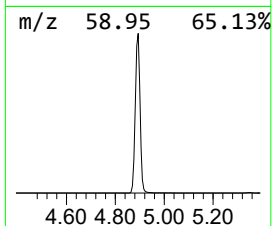
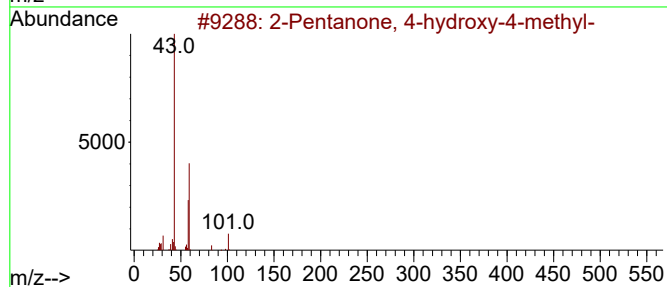
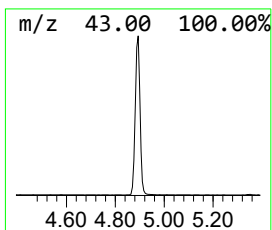
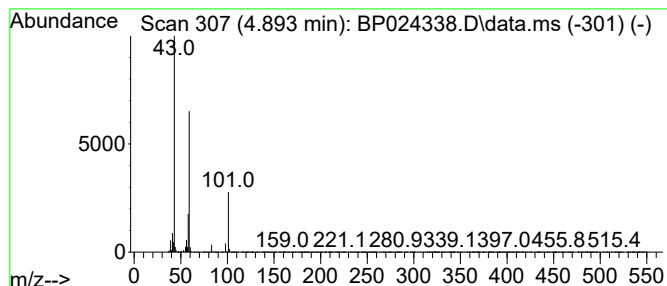
Quant Method : Z:\svoasrv\HPCHEM1\BNA_P\Methods\8270E-BP041425.M
 Quant Title : ASP BNA STANDARDS FOR 5 POINT CALIBRATION

TIC Library : C:\Database\NIST20.L
 TIC Integration Parameters: LSCINT.P

 Peak Number 2 2-Pentanone, 4-hydroxy-4-me... Concentration Rank 1

R.T.	EstConc	Area	Relative to ISTD	R.T.
4.893	40.97 ng	2878580	1,4-Dichlorobenzene-d4	7.728

Hit#	of 5	Tentative ID	MW	MolForm	CAS#	Qual
1		2-Pentanone, 4-hydroxy-4-methyl-	116	C6H12O2	000123-42-2	53
2		Acetic acid, cyano-, 1,1-dimethy...	141	C7H11NO2	001116-98-9	17
3		1-Propen-2-ol, acetate	100	C5H8O2	000108-22-5	10
4		Morpholine, 4-methyl-	101	C5H11NO	000109-02-4	9
5		5-Hexen-2-one	98	C6H10O	000109-49-9	9



Data Path : Z:\svoasrv\HPCHEM1\BNA_P\Data\BP041825\
 Data File : BP024338.D
 Acq On : 18 Apr 2025 11:54
 Operator : RC/JU
 Sample : PB167625BL
 Misc :
 ALS Vial : 3 Sample Multiplier: 1

Instrument :
 BNA_P
 ClientSampleId :
 PB167625BL

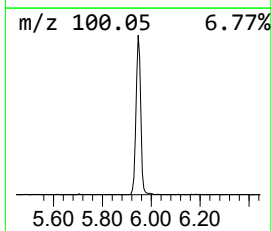
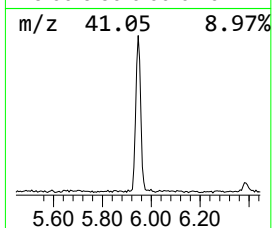
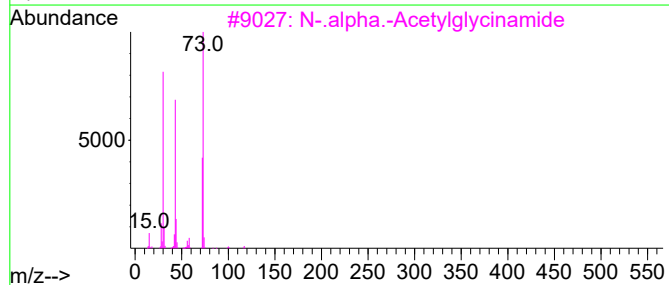
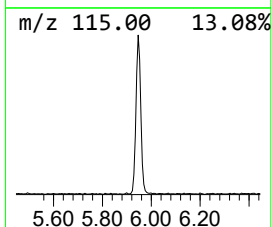
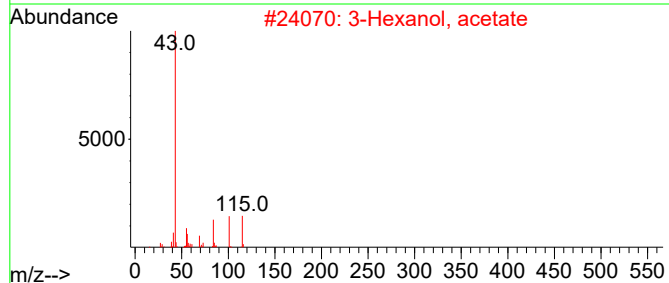
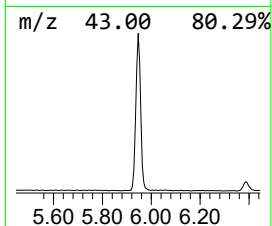
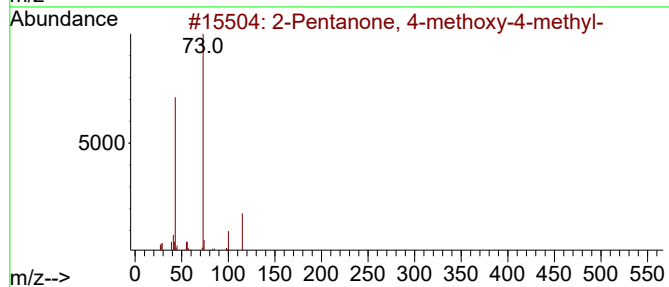
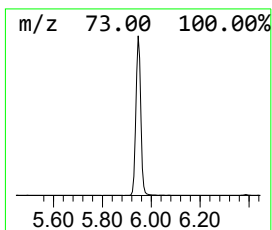
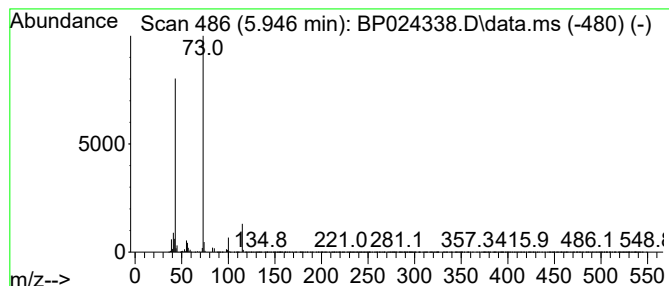
Quant Method : Z:\svoasrv\HPCHEM1\BNA_P\Methods\8270E-BP041425.M
 Quant Title : ASP BNA STANDARDS FOR 5 POINT CALIBRATION

TIC Library : C:\Database\NIST20.L
 TIC Integration Parameters: LSCINT.P

 Peak Number 3 2-Pentanone, 4-methoxy-4-me... Concentration Rank 2

R.T.	EstConc	Area	Relative to ISTD	R.T.
5.946	9.07 ng	636912	1,4-Dichlorobenzene-d4	7.728

Hit#	of 5	Tentative ID	MW	MolForm	CAS#	Qual
1		2-Pentanone, 4-methoxy-4-methyl-	130	C7H14O2	000107-70-0	83
2		3-Hexanol, acetate	144	C8H16O2	040780-64-1	32
3		N-.alpha.-Acetylglycinamide	116	C4H8N2O2	002620-63-5	28
4		2-Pentene, 2-methoxy-	100	C6H12O	061142-47-0	22
5		1-Propen-2-ol, acetate	100	C5H8O2	000108-22-5	12



Data Path : Z:\svoasrv\HPCHEM1\BNA_P\Data\BP041825\
Data File : BP024338.D
Acq On : 18 Apr 2025 11:54
Operator : RC/JU
Sample : PB167625BL
Misc :
ALS Vial : 3 Sample Multiplier: 1

Instrument :
BNA_P
ClientSampleId :
PB167625BL

Quant Method : Z:\svoasrv\HPCHEM1\BNA_P\Methods\8270E-BP041425.M
Quant Title : ASP BNA STANDARDS FOR 5 POINT CALIBRATION

TIC Library : C:\Database\NIST20.L
TIC Integration Parameters: LSCINT.P

TIC Top Hit name	RT	EstConc	Units	Response	--Internal Standard--			
					#	RT	Resp	Conc
3-Penten-2-one,...	4.305	5.5	ng	383932	1	7.728	1405200	20.0
2-Pentanone, 4-...	4.893	41.0	ng	2878580	1	7.728	1405200	20.0
2-Pentanone, 4-...	5.946	9.1	ng	636912	1	7.728	1405200	20.0