

Data Path : Z:\svoasrv\HPCHEM1\BNA_P\Data\BP042122\
 Data File : BP010075.D
 Acq On : 23 Apr 2022 02:43
 Operator : CG/JU
 Sample : PB144305BS
 Misc :
 ALS Vial : 71 Sample Multiplier: 1

Instrument :
 BNA_P
 ClientSampleId :
 SLCS305

Manual Integrations
 APPROVED

Reviewed By :Jagrut Upadhyay 04/25/2022
 Supervised By :mohammad ahmed 04/26/2022

Quant Time: Apr 23 03:56:41 2022
 Quant Method : Z:\svoasrv\HPCHEM1\BNA_P\Methods\SFAM-EPA-BP042122.M
 Quant Title : SVOA CALIBRATION
 QLast Update : Thu Apr 21 14:49:38 2022
 Response via : Initial Calibration

Compound	R.T.	QIon	Response	Conc	Units	Dev(Min)	
Internal Standards							
1) 1,4-Dichlorobenzene-d4	7.940	152	162023	20.000	ng/ul	#	0.00
20) Naphthalene-d8	10.746	136	737416	20.000	ng/ul		0.00
38) Acenaphthene-d10	14.569	164	522837	20.000	ng/ul		0.00
64) Phenanthrene-d10	17.322	188	1150771	20.000	ng/ul	#	0.00
79) Chrysene-d12	21.404	240	1006366	20.000	ng/ul	#	0.00
88) Perylene-d12	23.857	264	847919	20.000	ng/ul		0.00
System Monitoring Compounds							
3) 1,4-Dioxane-d8	3.370	96	26512	7.135	ng/uL		0.00
4) Pyridine-d5	3.781	84	304392	29.121	ng/ul		0.00
7) Phenol-d5	7.099	99	426589	28.946	ng/ul		0.00
9) Bis-(2-Chloroethyl)eth...	7.263	67	265829	30.061	ng/ul		0.00
11) 2-Chlorophenol-d4	7.469	132	338623	31.025	ng/ul		0.00
15) 4-Methylphenol-d8	8.646	113	370769	30.365	ng/ul		0.00
21) Nitrobenzene-d5	9.099	128	178305	30.402	ng/ul		0.00
24) 2-Nitrophenol-d4	9.822	143	198364	30.968	ng/ul		0.00
28) 2,4-Dichlorophenol-d3	10.363	165	375914	30.146	ng/ul		0.00
31) 4-Chloroaniline-d4	10.875	131	473448	26.480	ng/ul		0.00
46) Dimethylphthalate-d6	13.981	166	1238702	30.457	ng/ul		0.00
49) Acenaphthylene-d8	14.263	160	1429442	29.040	ng/ul		0.00
54) 4-Nitrophenol-d4	14.763	143	187085	24.987	ng/ul		0.00
60) Fluorene-d10	15.563	176	1068739	30.548	ng/ul		0.00
65) 4,6-Dinitro-2-methylph...	15.681	200	177871	24.445	ng/ul		0.00
73) Anthracene-d10	17.422	188	1683140	30.233	ng/ul		0.00
81) Pyrene-d10	19.651	212	1971461	34.447	ng/ul		0.00
92) Benzo(a)pyrene-d12	23.698	264	1428480	32.135	ng/ul		0.00
Target Compounds							
2) 1,4-Dioxane	3.399	88	41129	10.652	ng/uL#		23
5) Pyridine	3.805	79	338756	31.178	ng/ul#		45
6) Benzaldehyde	7.075	77	282286	35.843	ng/ul		97
8) Phenol	7.128	94	481302	32.503	ng/ul#		94
10) Bis(2-Chloroethyl)ether	7.358	93	364259	31.928	ng/ul#		78
12) 2-Chlorophenol	7.499	128	362820	32.956	ng/ul		94
13) 2-Methylphenol	8.381	108	364677	32.111	ng/ul		98
14) 2,2'-oxybis(1-Chloropr...	8.469	45	532636	31.464	ng/ul#		84
16) Acetophenone	8.763	105	602355	31.619	ng/ul#		83
17) N-Nitroso-di-n-propyla...	8.752	70	322538	32.315	ng/ul#		74
18) 4-Methylphenol	8.710	108	404769	32.371	ng/ul		89
19) Hexachloroethane	9.022	117	142357	30.773	ng/ul		85
22) Nitrobenzene	9.140	77	466469	32.462	ng/ul#		85
23) Isophorone	9.669	82	911015	32.098	ng/ul		97
25) 2-Nitrophenol	9.852	139	217715	32.092	ng/ul#		87
26) 2,4-Dimethylphenol	9.916	107	465204	31.673	ng/ul#		77
27) Bis(2-Chloroethoxy)met...	10.152	93	529167	31.810	ng/ul#		96
29) 2,4-Dichlorophenol	10.393	162	392206	32.720	ng/ul#		83
30) Naphthalene	10.793	128	1237830	32.072	ng/ul		97
32) 4-Chloroaniline	10.899	127	493157	27.990	ng/ul		98
33) Hexachlorobutadiene	11.087	225	262405	30.888	ng/ul		97
34) Caprolactam	11.675	113	116101m	26.927	ng/ul		
35) 4-Chloro-3-methylphenol	12.028	107	475849m	32.862	ng/ul		
36) 2-Methylnaphthalene	12.399	142	889489	31.777	ng/ul		92

Data Path : Z:\svoasrv\HPCHEM1\BNA_P\Data\BP042122\
 Data File : BP010075.D
 Acq On : 23 Apr 2022 02:43
 Operator : CG/JU
 Sample : PB144305BS
 Misc :
 ALS Vial : 71 Sample Multiplier: 1

Instrument :
 BNA_P
ClientSampleId :
 SLCS305

Manual Integrations
APPROVED
 Reviewed By :Jagrut Upadhyay 04/25/2022
 Supervised By :mohammad ahmed 04/26/2022

Quant Time: Apr 23 03:56:41 2022
 Quant Method : Z:\svoasrv\HPCHEM1\BNA_P\Methods\SFAM-EPA-BP042122.M
 Quant Title : SVOA CALIBRATION
 QLast Update : Thu Apr 21 14:49:38 2022
 Response via : Initial Calibration

Compound	R.T.	QIon	Response	Conc	Units	Dev(Min)
37) 1-Methylnaphthalene	12.616	142	916152	32.234	ng/ul#	94
39) 1,2,4,5-Tetrachloroben...	12.769	216	518414	32.094	ng/ul	91
40) Hexachlorocyclopentadiene	12.751	237	218232	23.973	ng/ul	93
41) 2,4,6-Trichlorophenol	13.004	196	339114	32.447	ng/ul#	86
42) 2,4,5-Trichlorophenol	13.081	196	357567	31.444	ng/ul#	88
43) 1,1'-Biphenyl	13.404	154	1262643	32.743	ng/ul	93
44) 2-Chloronaphthalene	13.446	162	974822	32.666	ng/ul	94
45) 2-Nitroaniline	13.646	65	328729	33.971	ng/ul#	80
47) Dimethylphthalate	14.028	163	1285970	32.534	ng/ul#	92
48) 2,6-Dinitrotoluene	14.140	165	275780	33.998	ng/ul	95
50) Acenaphthylene	14.293	152	1590548	32.622	ng/ul	96
51) 3-Nitroaniline	14.469	138	258910	35.235	ng/ul#	83
52) Acenaphthene	14.634	153	1036783	32.702	ng/ul	99
53) 2,4-Dinitrophenol	14.675	184	84771	18.702	ng/ul#	80
55) 4-Nitrophenol	14.781	109	175870	27.036	ng/ul#	46
56) Dibenzofuran	14.969	168	1526295	32.511	ng/ul	98
57) 2,4-Dinitrotoluene	14.928	165	395946	33.413	ng/ul#	81
58) 2,3,4,6-Tetrachlorophenol	15.198	232	331972	32.842	ng/ul#	86
59) Diethylphthalate	15.392	149	1320036	32.833	ng/ul	94
61) Fluorene	15.622	166	1240279	32.178	ng/ul	90
62) 4-Chlorophenyl-phenyle...	15.610	204	653430	32.212	ng/ul	97
63) 4-Nitroaniline	15.634	138	258085m	36.095	ng/ul	
66) 4,6-Dinitro-2-methylph...	15.698	198	184141	26.229	ng/ul#	91
67) N-Nitrosodiphenylamine	15.828	169	1085331	32.870	ng/ul	94
68) 4-Bromophenyl-phenylether	16.510	248	406645	33.129	ng/ul	94
69) Hexachlorobenzene	16.634	284	468198	32.862	ng/ul#	91
70) Atrazine	16.781	200	425049	31.664	ng/ul	92
71) Pentachlorophenol	16.975	266	264481m	29.149	ng/ul	
72) Phenanthrene	17.363	178	2037253	32.571	ng/ul	99
74) Anthracene	17.457	178	2058040	32.667	ng/ul	98
75) 1,2,3,4-Tetrachloroben...	13.375	216	556254	33.110	ng/uL#	86
76) Pentachlorobenzene	14.893	250	534149	32.423	ng/uL	90
77) Carbazole	17.722	167	1778220	31.897	ng/ul#	96
78) Di-n-butylphthalate	18.275	149	2294833	33.459	ng/ul#	93
80) Fluoranthene	19.328	202	2445045	37.876	ng/ul	96
82) Pyrene	19.680	202	2479998	37.289	ng/ul#	94
83) Butylbenzylphthalate	20.545	149	1047310	38.095	ng/ul#	82
84) 3,3'-Dichlorobenzidine	21.316	252	503375	27.799	ng/ul#	97
85) Benzo(a)anthracene	21.386	228	2171213	33.996	ng/ul	95
86) Bis(2-ethylhexyl)phtha...	21.310	149	1540447	37.806	ng/ul#	82
87) Chrysene	21.445	228	2106998	33.505	ng/ul	99
89) Di-n-octyl phthalate	22.251	149	2576407	39.085	ng/ul	100
90) Benzo(b)fluoranthene	23.110	252	1980686	34.747	ng/ul	99
91) Benzo(k)fluoranthene	23.157	252	1827543	33.846	ng/ul#	97
93) Benzo(a)pyrene	23.751	252	1792890	34.012	ng/ul	98
94) Indeno(1,2,3-cd)pyrene	26.421	276	1691136	32.250	ng/ul#	94
95) Dibenzo(a,h)anthracene	26.427	278	1390220	30.983	ng/ul#	96
96) Benzo(g,h,i)perylene	27.204	276	1483600	33.530	ng/ul#	91

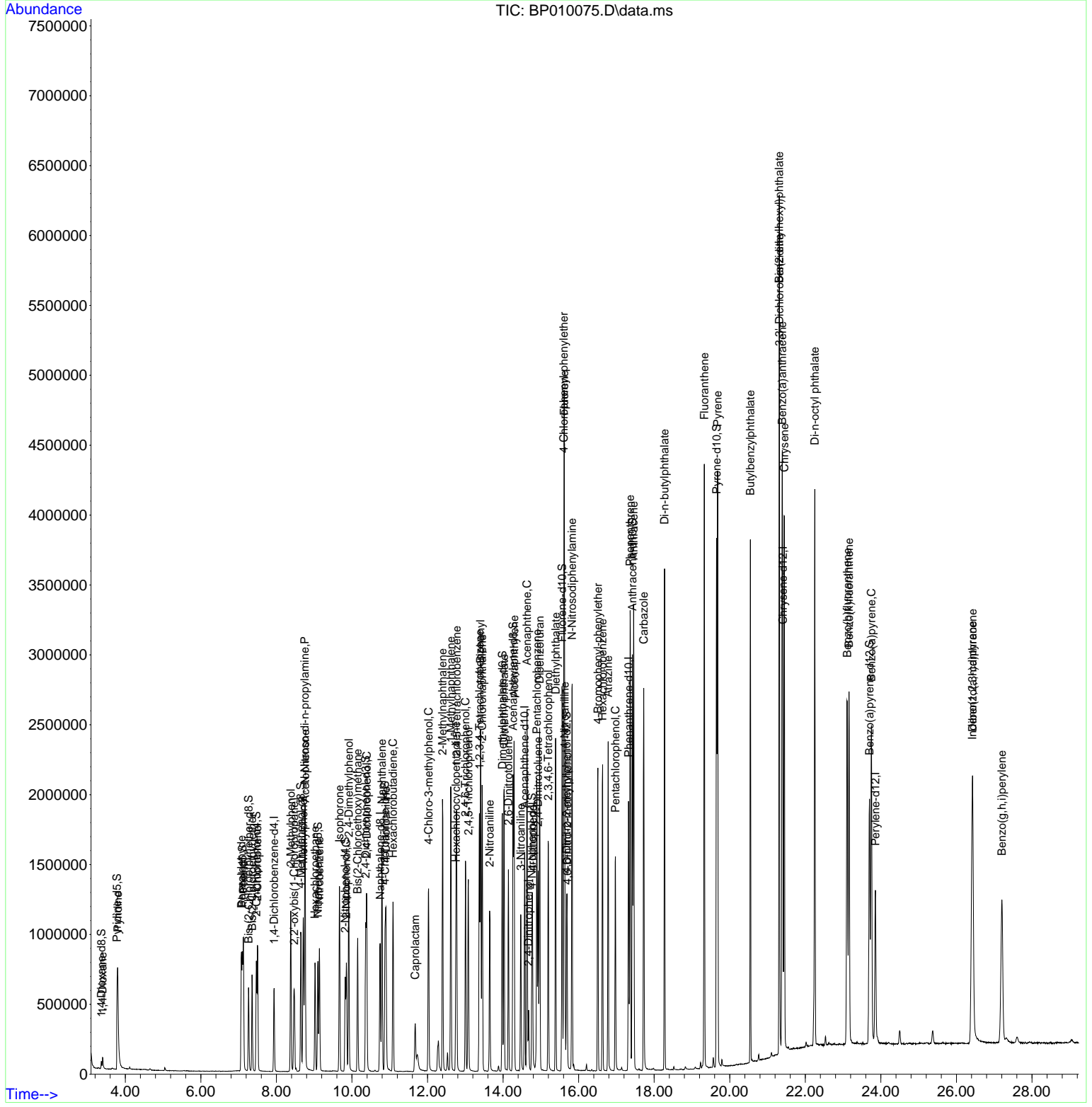
(#) = qualifier out of range (m) = manual integration (+) = signals summed

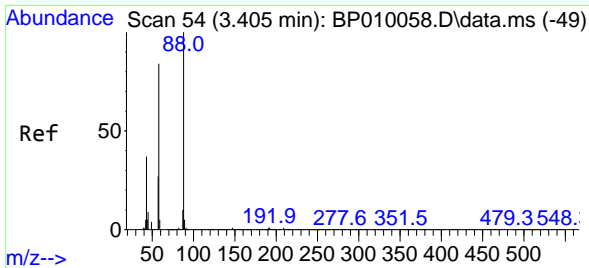
Data Path : Z:\svoasrv\HPCHEM1\BNA_P\Data\BP042122\
 Data File : BP010075.D
 Acq On : 23 Apr 2022 02:43
 Operator : CG/JU
 Sample : PB144305BS
 Misc :
 ALS Vial : 71 Sample Multiplier: 1

Instrument :
 BNA_P
 ClientSampleId :
 SLCS305

Quant Time: Apr 23 03:56:41 2022
 Quant Method : Z:\svoasrv\HPCHEM1\BNA_P\Methods\SFAM-EPA-BP042122.M
 Quant Title : SVOA CALIBRATION
 QLast Update : Thu Apr 21 14:49:38 2022
 Response via : Initial Calibration

Manual Integrations
APPROVED
 Reviewed By :Jagrut Upadhyay 04/25/2022
 Supervised By :mohammad ahmed 04/26/2022





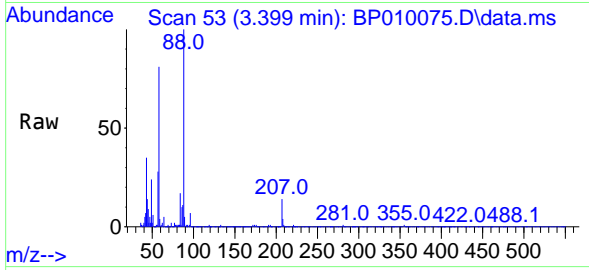
#2
 1,4-Dioxane
 Concen: 10.652 ng/uL
 RT: 3.399 min Scan# 51
 Delta R.T. -0.006 min
 Lab File: BP010075.D
 Acq: 23 Apr 2022 02:43

Instrument :

BNA_P

Client SampleId :

SLCS305

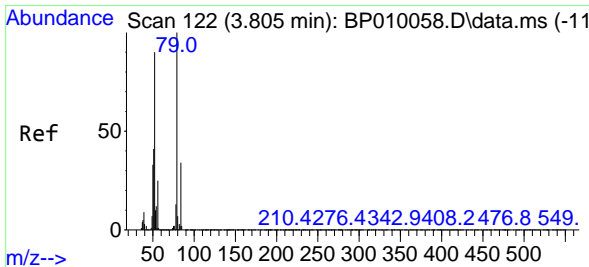
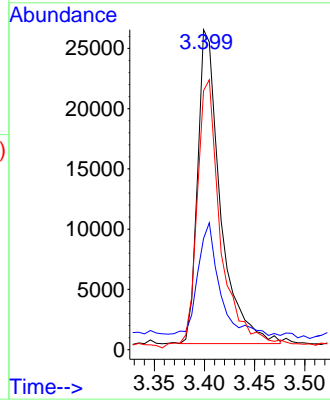
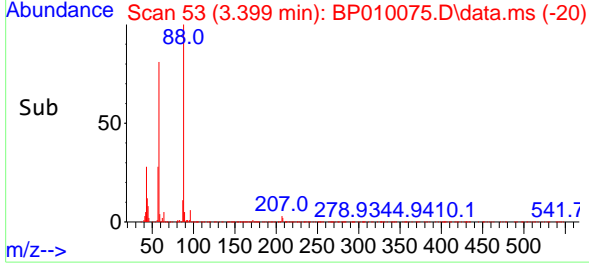


Tgt Ion: 88 Resp: 41129
 Ion Ratio Lower Upper
 88 100
 43 34.8 6.8 10.2#
 58 80.9 28.4 42.6#

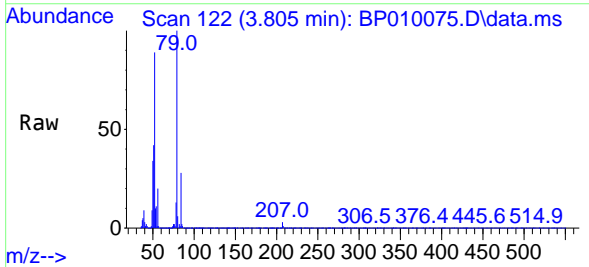
Manual Integrations

APPROVED

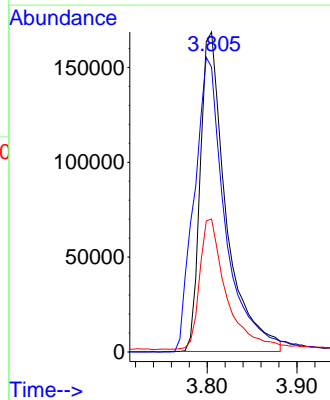
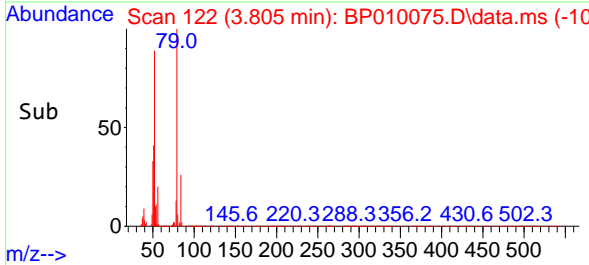
Reviewed By :Jagrut Upadhyay 04/25/2022
 Supervised By :mohammad ahmed 04/26/2022

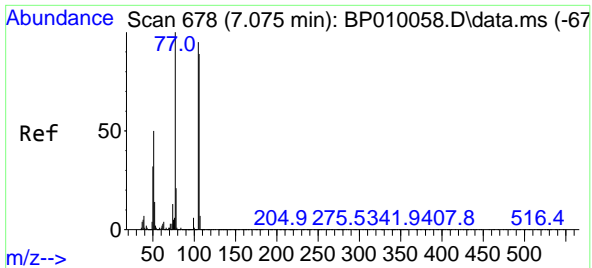


#5
 Pyridine
 Concen: 31.178 ng/uL
 RT: 3.805 min Scan# 122
 Delta R.T. 0.000 min
 Lab File: BP010075.D
 Acq: 23 Apr 2022 02:43



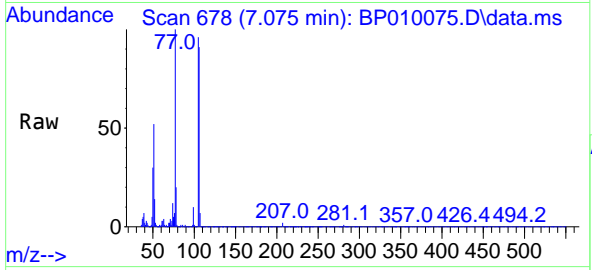
Tgt Ion: 79 Resp: 338756
 Ion Ratio Lower Upper
 79 100
 52 89.0 35.5 53.3#
 51 41.5 20.2 30.4#





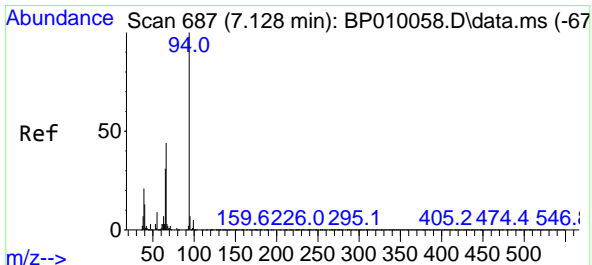
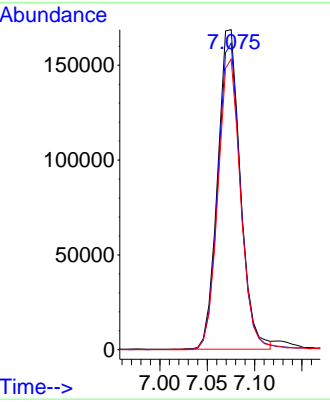
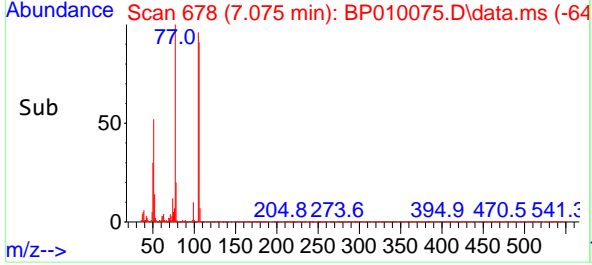
#6
Benzaldehyde
Concen: 35.843 ng/u1
RT: 7.075 min Scan# 61
Delta R.T. 0.000 min
Lab File: BP010075.D
Acq: 23 Apr 2022 02:43

Instrument : BNA_P
ClientSampleId : SLCS305

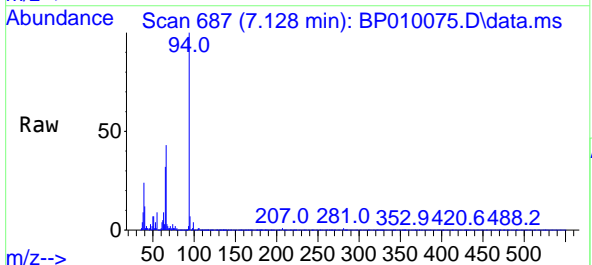


Tgt Ion: 77 Resp: 282280
Ion Ratio Lower Upper
77 100
105 95.8 77.0 115.4
106 90.7 77.0 115.4

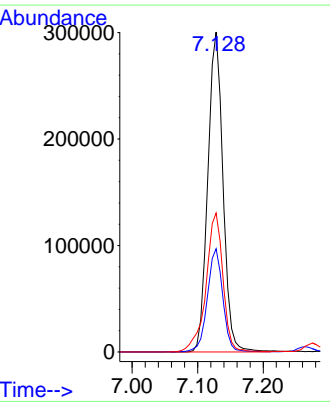
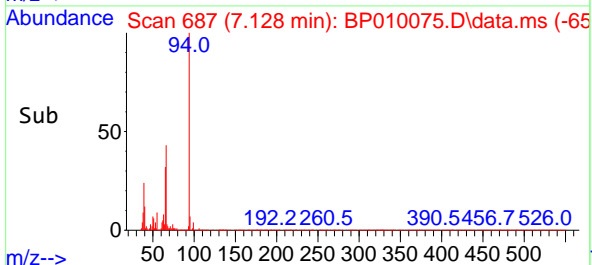
Manual Integrations
APPROVED
Reviewed By :Jagrut Upadhyay 04/25/2022
Supervised By :mohammad ahmed 04/26/2022

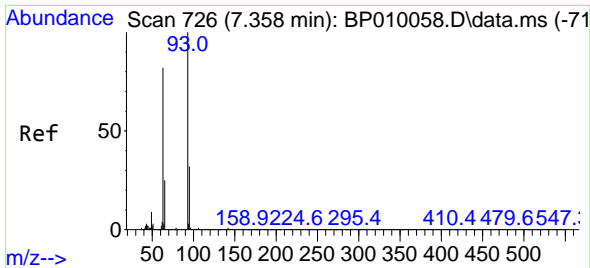


#8
Phenol
Concen: 32.503 ng/u1
RT: 7.128 min Scan# 687
Delta R.T. 0.000 min
Lab File: BP010075.D
Acq: 23 Apr 2022 02:43



Tgt Ion: 94 Resp: 481302
Ion Ratio Lower Upper
94 100
65 32.3 19.0 28.6#
66 43.4 34.6 51.8





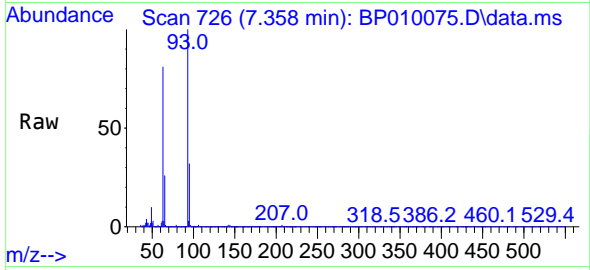
#10
 Bis(2-Chloroethyl)ether
 Concen: 31.928 ng/ul
 RT: 7.358 min Scan# 71
 Delta R.T. 0.000 min
 Lab File: BP010075.D
 Acq: 23 Apr 2022 02:43

Instrument :

BNA_P

Client SampleId :

SLCS305



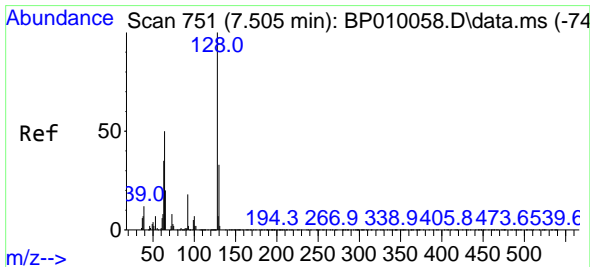
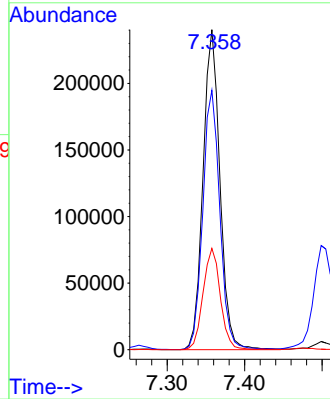
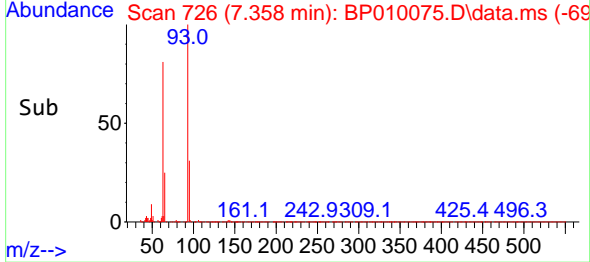
Tgt Ion: 93 Resp: 364259
 Ion Ratio Lower Upper
 93 100
 63 81.0 45.0 67.4
 95 31.7 26.3 39.5

Manual Integrations

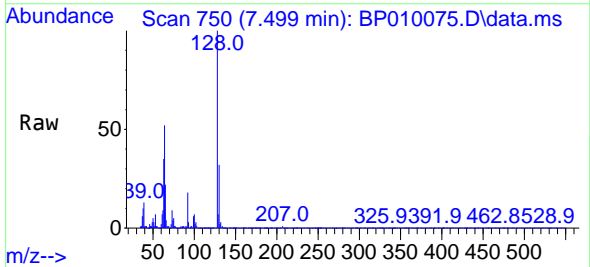
APPROVED

Reviewed By :Jagrut Upadhyay 04/25/2022

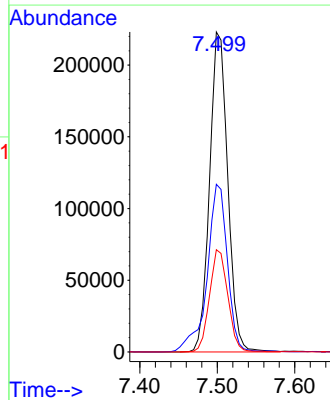
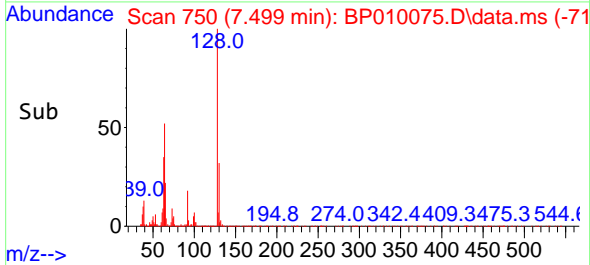
Supervised By :mohammad ahmed 04/26/2022

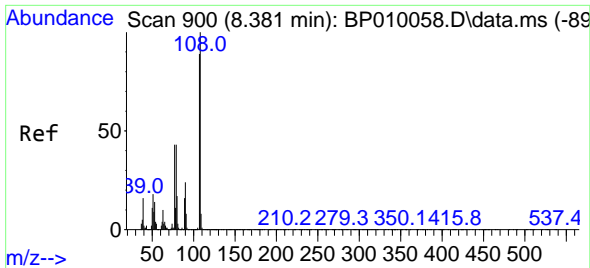


#12
 2-Chlorophenol
 Concen: 32.956 ng/ul
 RT: 7.499 min Scan# 750
 Delta R.T. -0.006 min
 Lab File: BP010075.D
 Acq: 23 Apr 2022 02:43



Tgt Ion:128 Resp: 362820
 Ion Ratio Lower Upper
 128 100
 64 52.4 45.3 67.9
 130 32.0 29.0 43.6





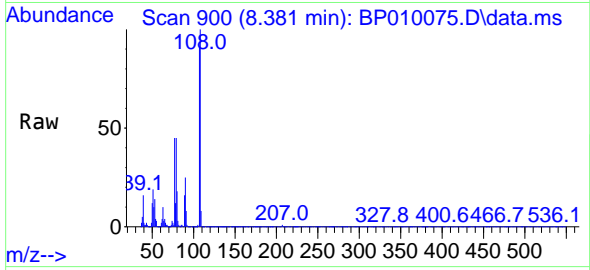
#13
 2-Methylphenol
 Concen: 32.111 ng/u1
 RT: 8.381 min Scan# 900
 Delta R.T. 0.000 min
 Lab File: BP010075.D
 Acq: 23 Apr 2022 02:43

Instrument :

BNA_P

ClientSampleId :

SLCS305

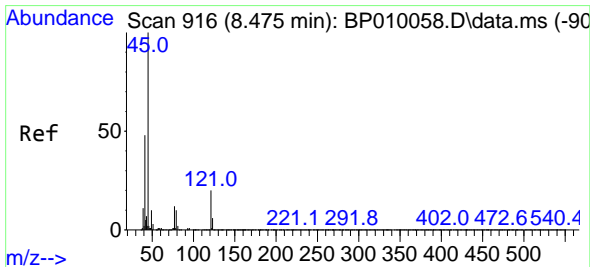
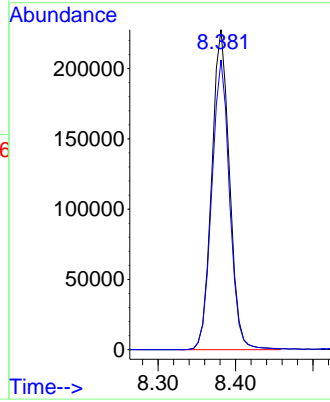
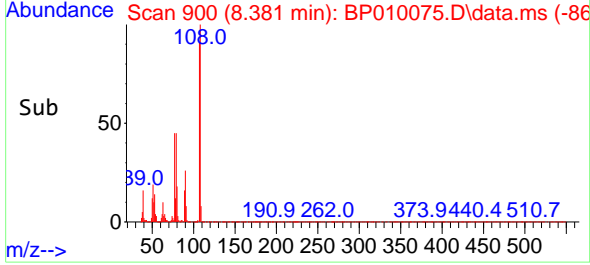


Tgt Ion:108 Resp: 36467
 Ion Ratio Lower Upper
 108 100
 107 90.5 70.8 106.2

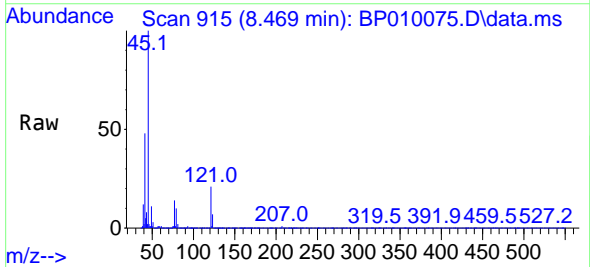
Manual Integrations

APPROVED

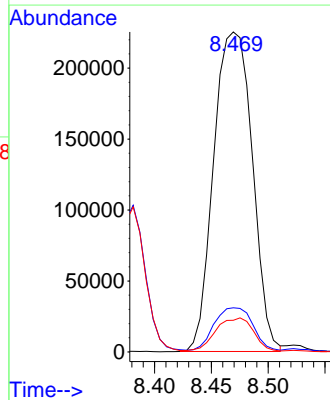
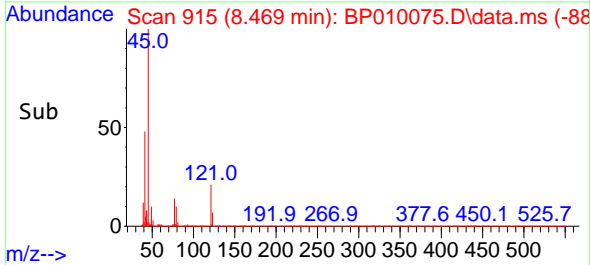
Reviewed By :Jagrut Upadhyay 04/25/2022
 Supervised By :mohammad ahmed 04/26/2022

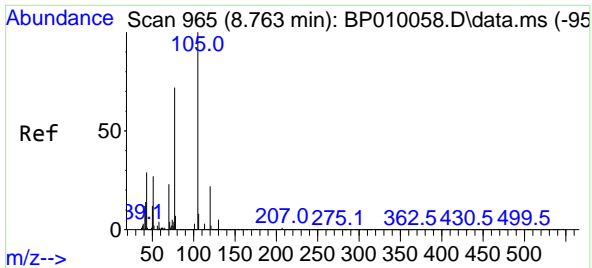


#14
 2,2'-oxybis(1-Chloropropane)
 Concen: 31.464 ng/u1
 RT: 8.469 min Scan# 915
 Delta R.T. 0.000 min
 Lab File: BP010075.D
 Acq: 23 Apr 2022 02:43



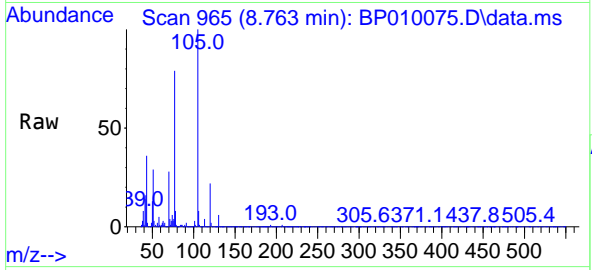
Tgt Ion: 45 Resp: 532636
 Ion Ratio Lower Upper
 45 100
 77 13.8 17.1 25.7#
 79 9.9 13.2 19.8#





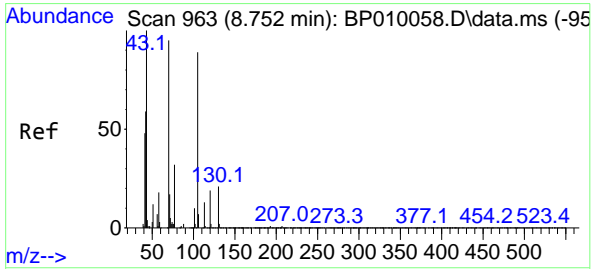
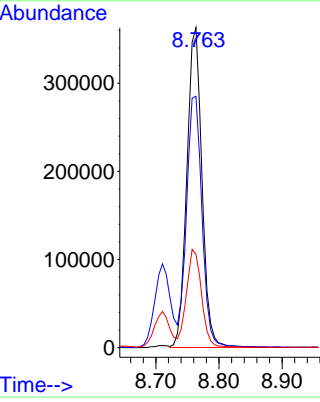
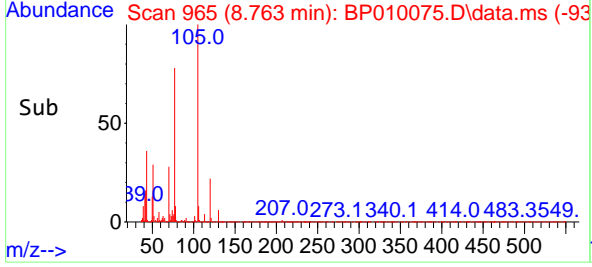
#16
 Acetophenone
 Concen: 31.619 ng/u1
 RT: 8.763 min Scan# 90
 Delta R.T. 0.000 min
 Lab File: BP010075.D
 Acq: 23 Apr 2022 02:43

Instrument : BNA_P
 Client SampleId : SLCS305

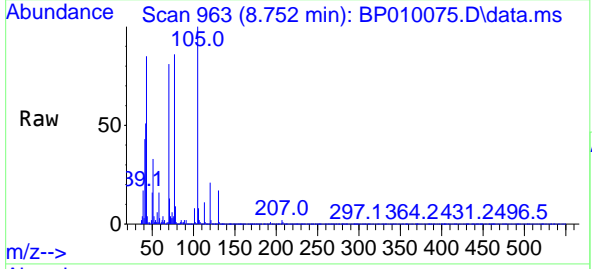


Tgt Ion: 105 Resp: 60235
 Ion Ratio Lower Upper
 105 100
 77 78.6 53.4 80.2
 51 29.2 13.8 20.8

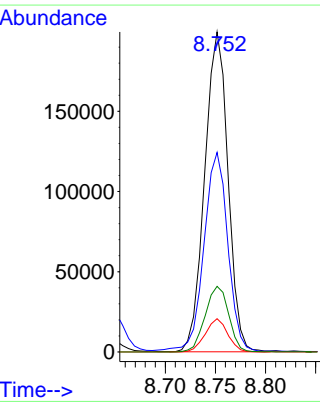
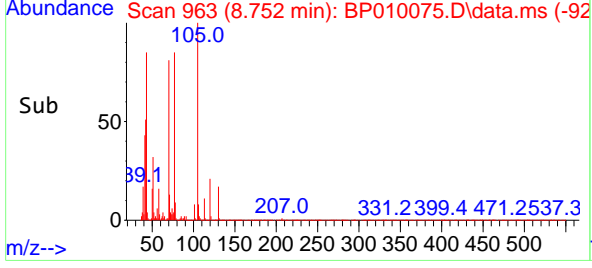
Manual Integrations
APPROVED
 Reviewed By :Jagrut Upadhyay 04/25/2022
 Supervised By :mohammad ahmed 04/26/2022

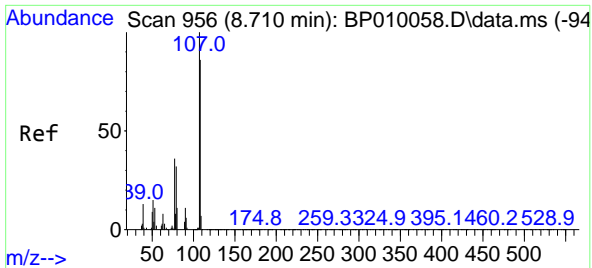


#17
 N-Nitroso-di-n-propylamine
 Concen: 32.315 ng/u1
 RT: 8.752 min Scan# 963
 Delta R.T. 0.000 min
 Lab File: BP010075.D
 Acq: 23 Apr 2022 02:43



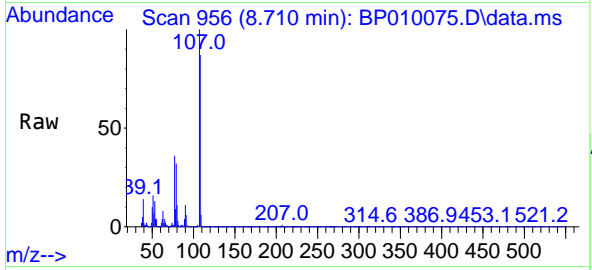
Tgt Ion: 70 Resp: 322538
 Ion Ratio Lower Upper
 70 100
 42 62.4 31.8 47.8#
 101 10.4 15.6 23.4#
 130 20.5 13.7 20.5





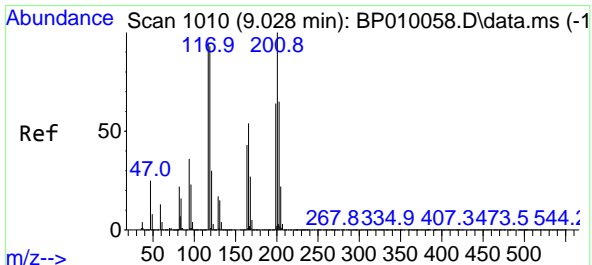
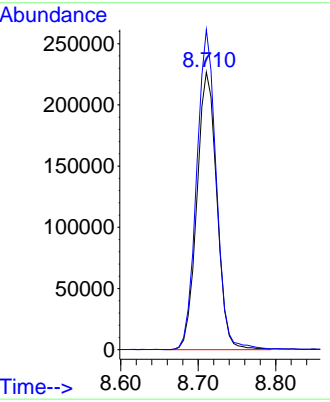
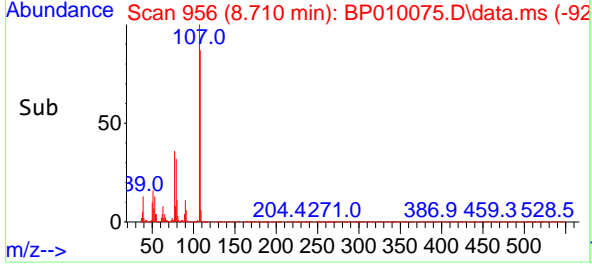
#18
 4-Methylphenol
 Concen: 32.371 ng/u1
 RT: 8.710 min Scan# 91
 Delta R.T. 0.000 min
 Lab File: BP010075.D
 Acq: 23 Apr 2022 02:43

Instrument : BNA_P
 Client Sample Id : SLCS305

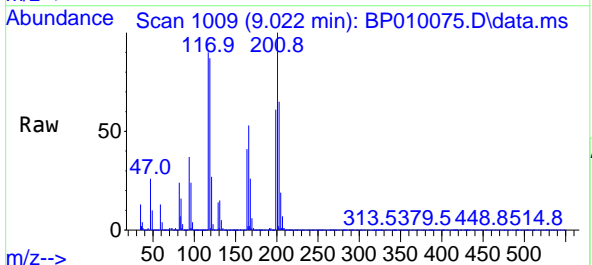


Tgt Ion: 108 Resp: 404769
 Ion Ratio Lower Upper
 108 100
 107 115.3 83.6 125.4

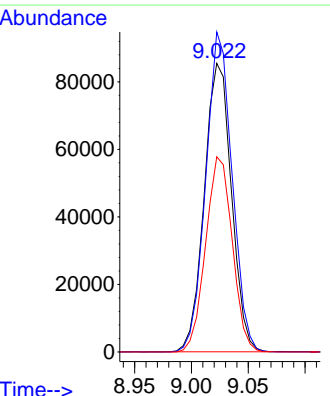
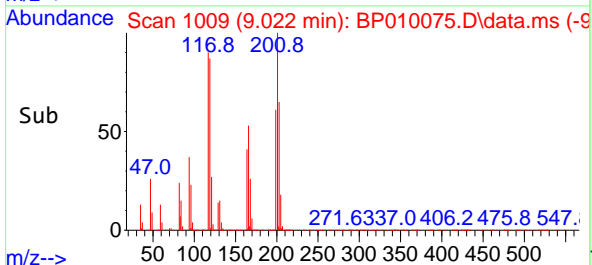
Manual Integrations
APPROVED
 Reviewed By : Jagrut Upadhyay 04/25/2022
 Supervised By : mohammad ahmed 04/26/2022

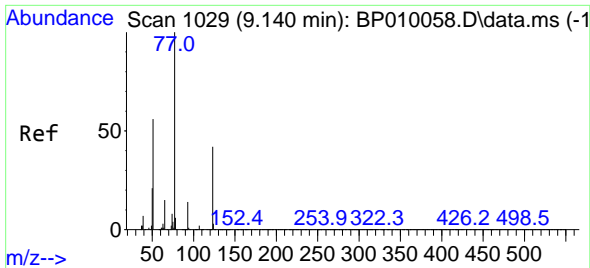


#19
 Hexachloroethane
 Concen: 30.773 ng/u1
 RT: 9.022 min Scan# 1009
 Delta R.T. -0.006 min
 Lab File: BP010075.D
 Acq: 23 Apr 2022 02:43



Tgt Ion: 117 Resp: 142357
 Ion Ratio Lower Upper
 117 100
 201 110.8 106.5 159.7
 199 67.6 59.0 88.6





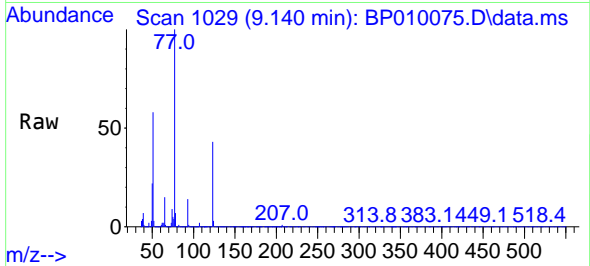
#22
 Nitrobenzene
 Concen: 32.462 ng/u1
 RT: 9.140 min Scan# 1029
 Delta R.T. 0.000 min
 Lab File: BP010075.D
 Acq: 23 Apr 2022 02:43

Instrument :

BNA_P

Client SampleId :

SLCS305

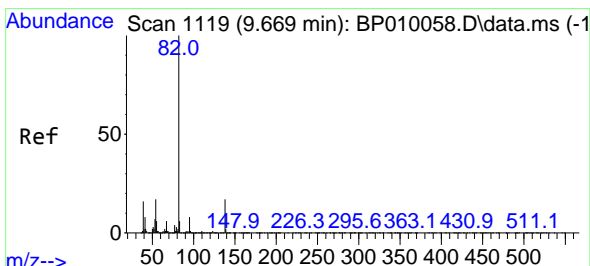
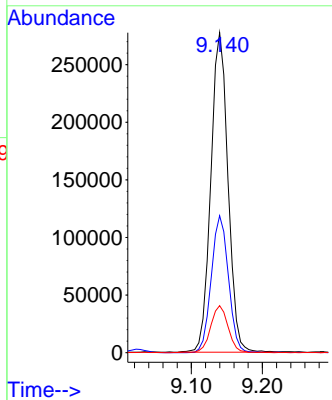
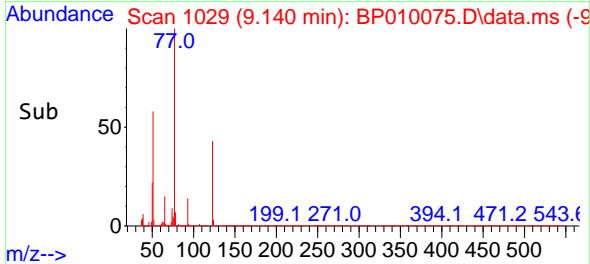


Tgt Ion: 77 Resp: 466469
 Ion Ratio Lower Upper
 77 100
 123 42.8 42.3 63.5
 65 14.7 5.8 8.8

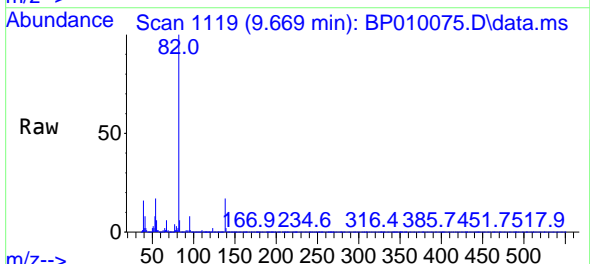
Manual Integrations

APPROVED

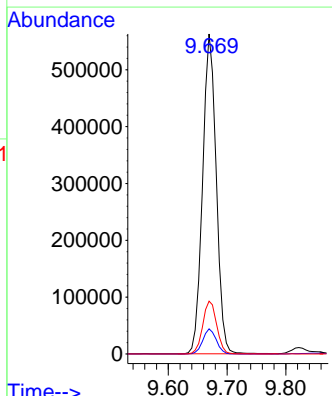
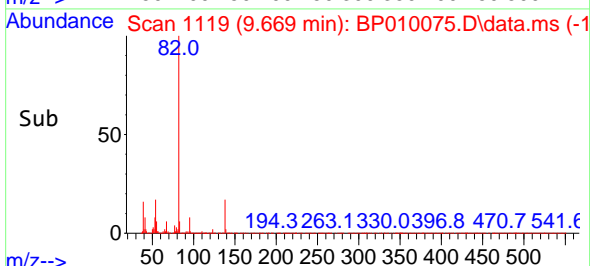
Reviewed By :Jagrut Upadhyay 04/25/2022
 Supervised By :mohammad ahmed 04/26/2022

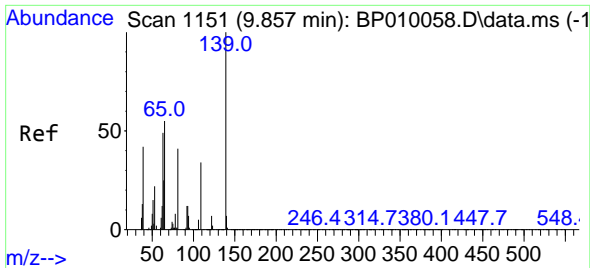


#23
 Isophorone
 Concen: 32.098 ng/u1
 RT: 9.669 min Scan# 1119
 Delta R.T. 0.000 min
 Lab File: BP010075.D
 Acq: 23 Apr 2022 02:43



Tgt Ion: 82 Resp: 911015
 Ion Ratio Lower Upper
 82 100
 95 7.9 7.8 11.8
 138 16.5 12.9 19.3





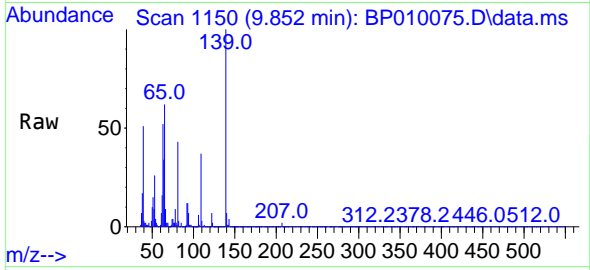
#25
 2-Nitrophenol
 Concen: 32.092 ng/ul
 RT: 9.852 min Scan# 1151
 Delta R.T. -0.006 min
 Lab File: BP010075.D
 Acq: 23 Apr 2022 02:43

Instrument :

BNA_P

ClientSampleId :

SLCS305

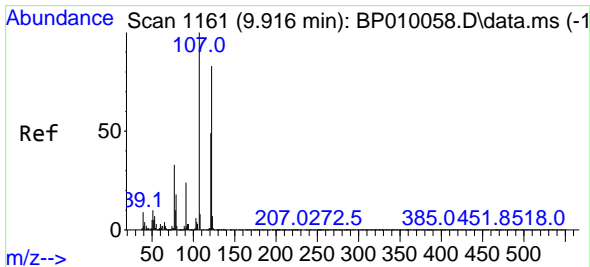
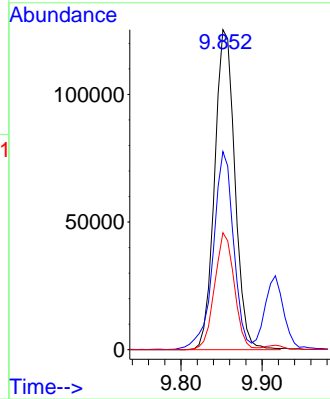
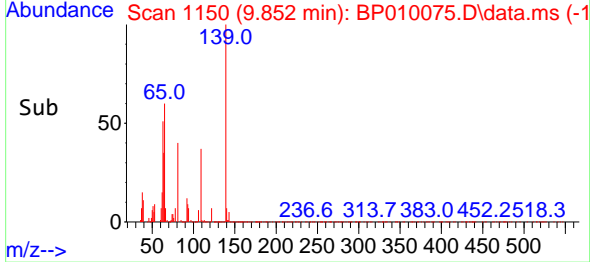


Tgt Ion:139 Resp: 21771
 Ion Ratio Lower Upper
 139 100
 65 61.9 49.4 74.2
 109 36.5 44.7 67.1

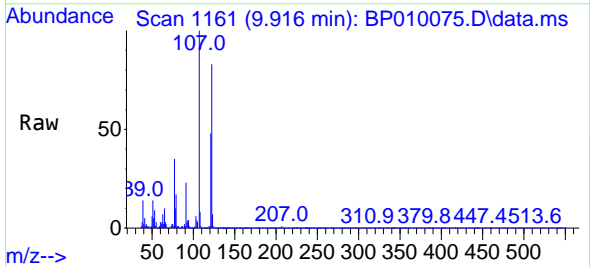
Manual Integrations

APPROVED

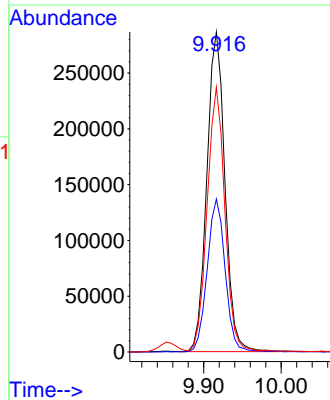
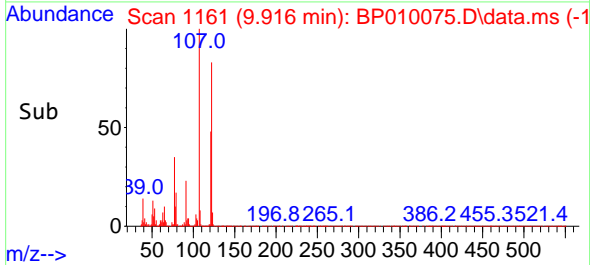
Reviewed By :Jagrut Upadhyay 04/25/2022
 Supervised By :mohammad ahmed 04/26/2022

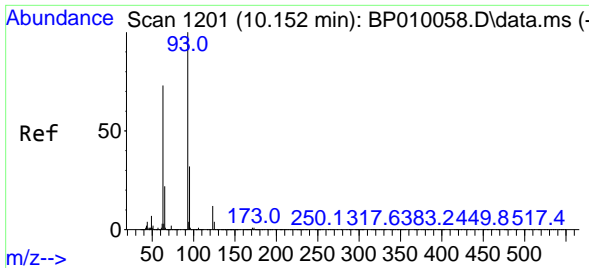


#26
 2,4-Dimethylphenol
 Concen: 31.673 ng/ul
 RT: 9.916 min Scan# 1161
 Delta R.T. 0.000 min
 Lab File: BP010075.D
 Acq: 23 Apr 2022 02:43



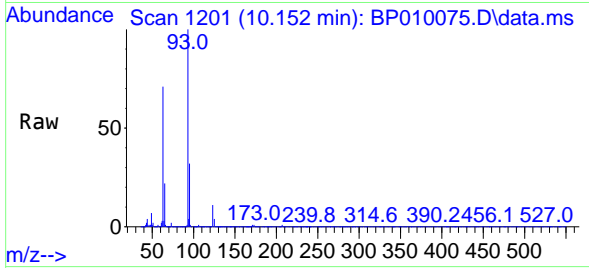
Tgt Ion:107 Resp: 465204
 Ion Ratio Lower Upper
 107 100
 121 47.8 34.1 51.1
 122 82.8 46.3 69.5#





#27
 Bis(2-Chloroethoxy)methane
 Concen: 31.810 ng/ul
 RT: 10.152 min Scan# 11
 Delta R.T. 0.000 min
 Lab File: BP010075.D
 Acq: 23 Apr 2022 02:43

Instrument :
 BNA_P
 ClientSampleId :
 SLCS305

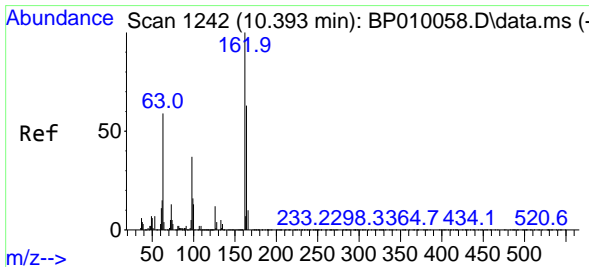
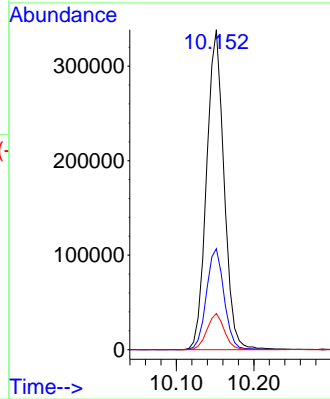
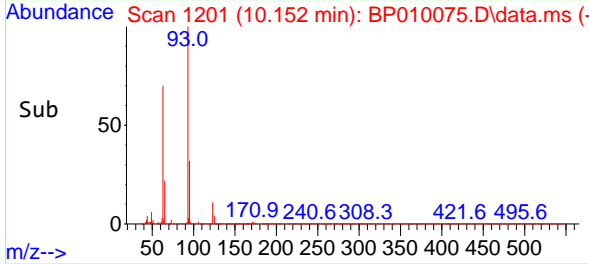


Tgt Ion: 93 Resp: 52916

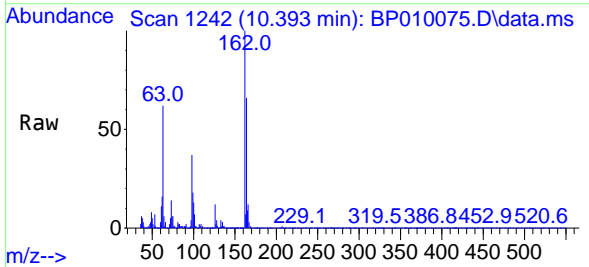
Ion	Ratio	Lower	Upper
93	100		
95	31.6	26.2	39.4
123	11.3	6.2	9.4

Manual Integrations
 APPROVED

Reviewed By :Jagrut Upadhyay 04/25/2022
 Supervised By :mohammad ahmed 04/26/2022

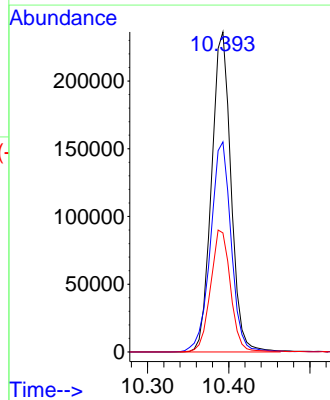
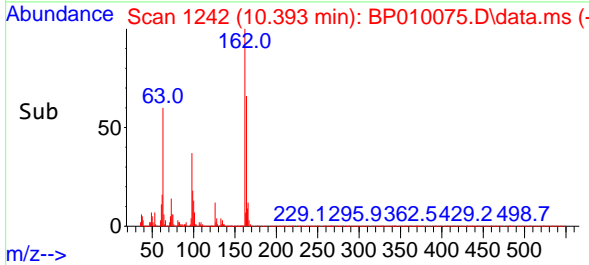


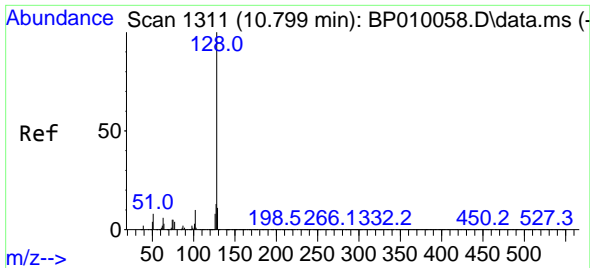
#29
 2,4-Dichlorophenol
 Concen: 32.720 ng/ul
 RT: 10.393 min Scan# 1242
 Delta R.T. 0.000 min
 Lab File: BP010075.D
 Acq: 23 Apr 2022 02:43



Tgt Ion:162 Resp: 392206

Ion	Ratio	Lower	Upper
162	100		
164	65.6	37.0	55.6
98	37.2	31.0	46.6





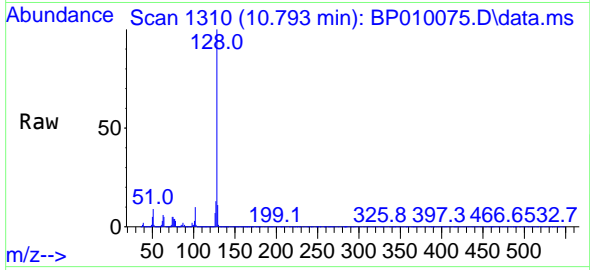
#30
 Naphthalene
 Concen: 32.072 ng/u1
 RT: 10.793 min Scan# 11
 Delta R.T. -0.006 min
 Lab File: BP010075.D
 Acq: 23 Apr 2022 02:43

Instrument :

BNA_P

Client SampleId :

SLCS305

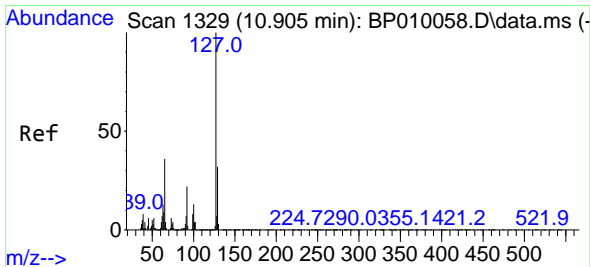
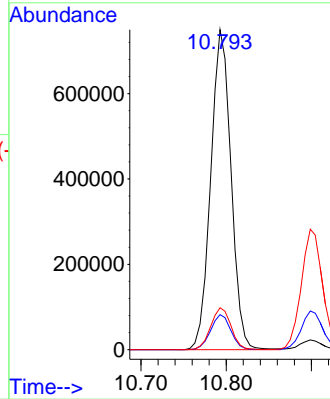
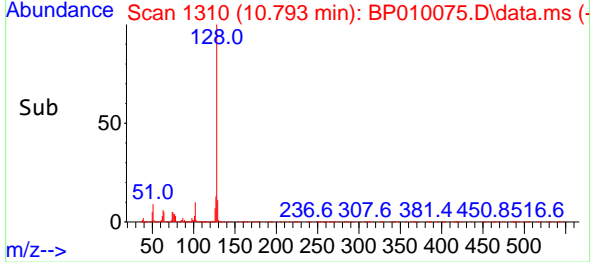


Tgt Ion:128 Resp: 1237830
 Ion Ratio Lower Upper
 128 100
 129 10.9 8.6 13.0
 127 13.1 12.2 18.4

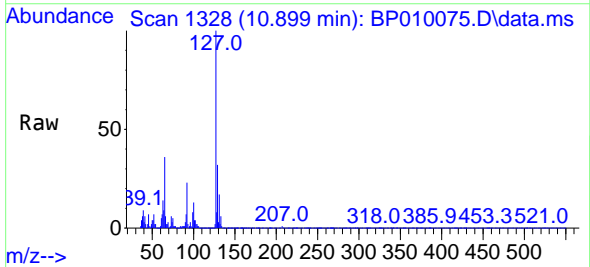
Manual Integrations

APPROVED

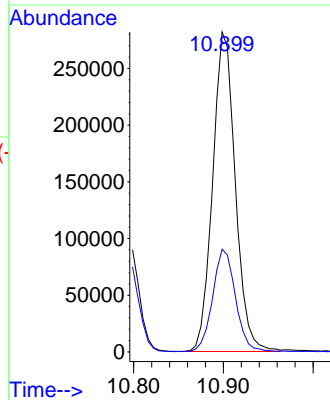
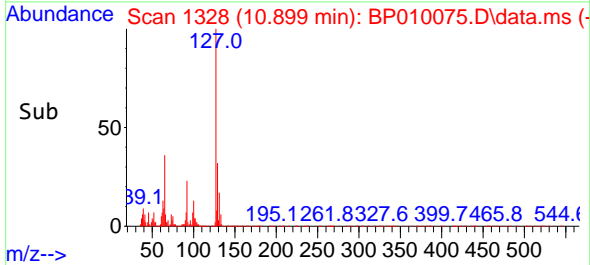
Reviewed By :Jagrut Upadhyay 04/25/2022
 Supervised By :mohammad ahmed 04/26/2022

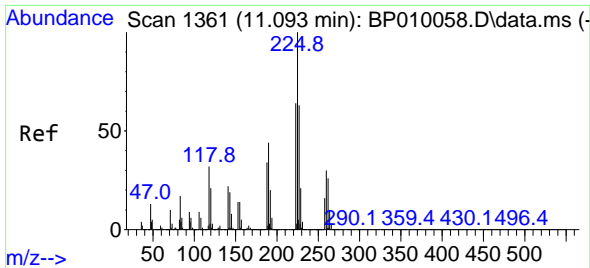


#32
 4-Chloroaniline
 Concen: 27.990 ng/u1
 RT: 10.899 min Scan# 1328
 Delta R.T. -0.006 min
 Lab File: BP010075.D
 Acq: 23 Apr 2022 02:43



Tgt Ion:127 Resp: 493157
 Ion Ratio Lower Upper
 127 100
 129 32.1 24.6 37.0





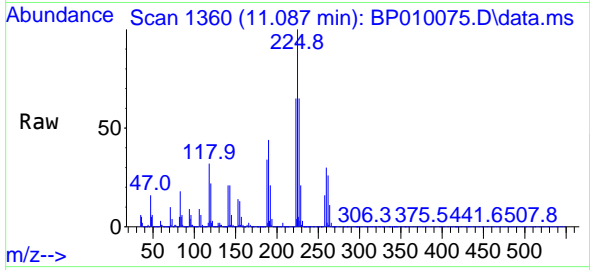
#33
 Hexachlorobutadiene
 Concen: 30.888 ng/u1
 RT: 11.087 min Scan# 1111
 Delta R.T. -0.006 min
 Lab File: BP010075.D
 Acq: 23 Apr 2022 02:43

Instrument :

BNA_P

ClientSampleId :

SLCS305

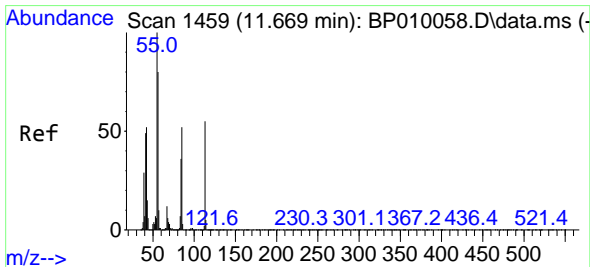
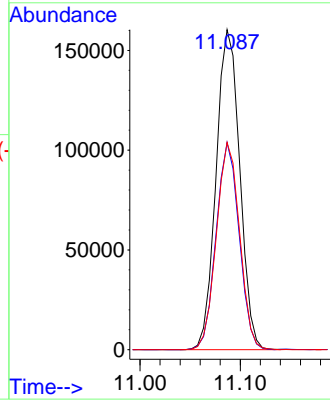
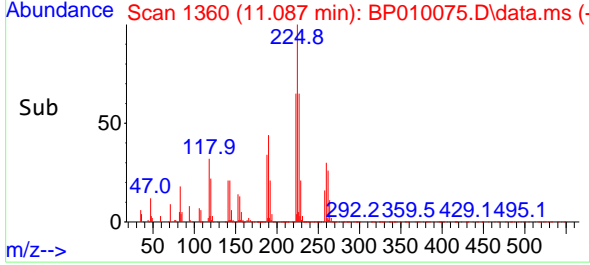


Tgt Ion:225 Resp: 26240
 Ion Ratio Lower Upper
 225 100
 223 64.7 53.4 80.0
 227 64.7 53.8 80.8

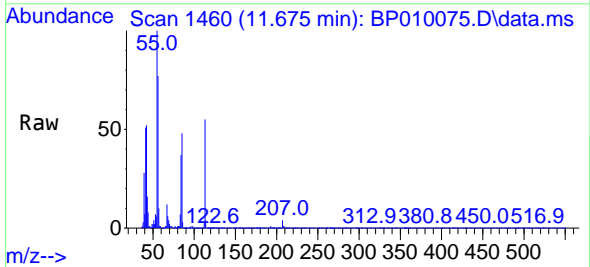
Manual Integrations

APPROVED

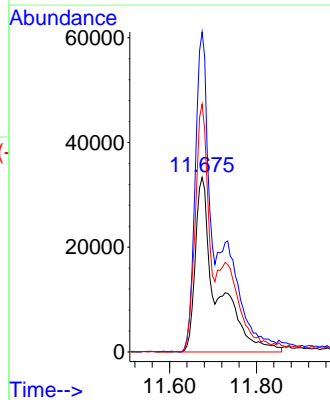
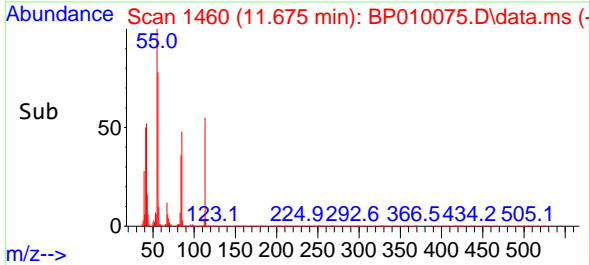
Reviewed By :Jagrut Upadhyay 04/25/2022
 Supervised By :mohammad ahmed 04/26/2022

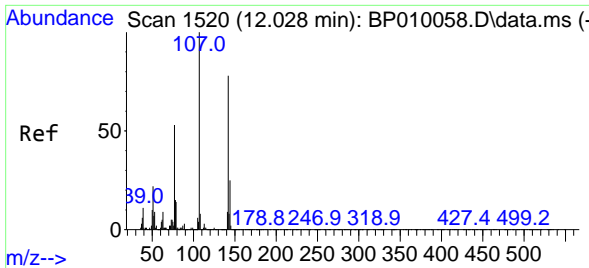


#34
 Caprolactam
 Concen: 26.927 ng/u1 m
 RT: 11.675 min Scan# 1460
 Delta R.T. 0.012 min
 Lab File: BP010075.D
 Acq: 23 Apr 2022 02:43



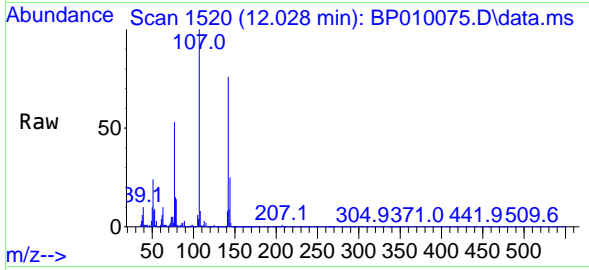
Tgt Ion:113 Resp: 116101
 Ion Ratio Lower Upper
 113 100
 55 183.2 58.2 87.2#
 56 142.0 68.6 103.0#





#35
 4-Chloro-3-methylphenol
 Concen: 32.862 ng/ul m
 RT: 12.028 min Scan# 1520
 Delta R.T. 0.006 min
 Lab File: BP010075.D
 Acq: 23 Apr 2022 02:43

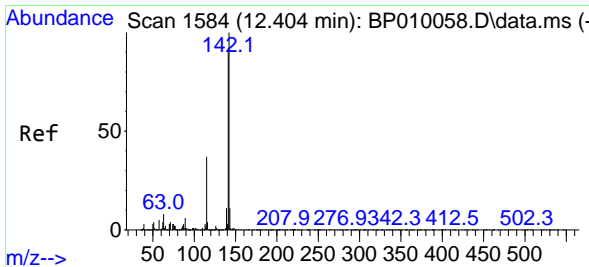
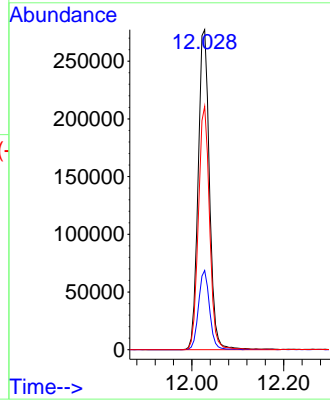
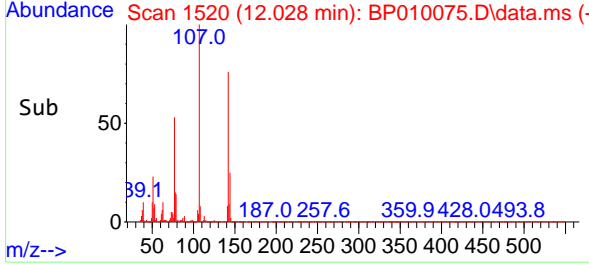
Instrument :
 BNA_P
 ClientSampleId :
 SLCS305



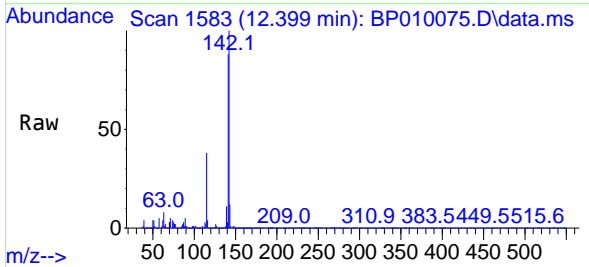
Tgt Ion:107 Resp: 475849
 Ion Ratio Lower Upper
 107 100
 144 24.7 15.8 23.8
 142 76.0 38.9 58.3

Manual Integrations
APPROVED

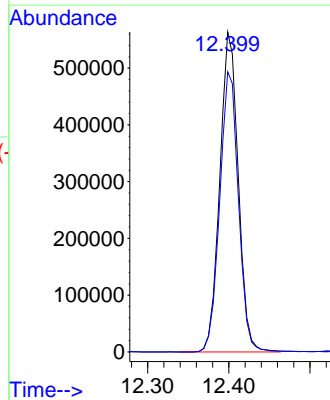
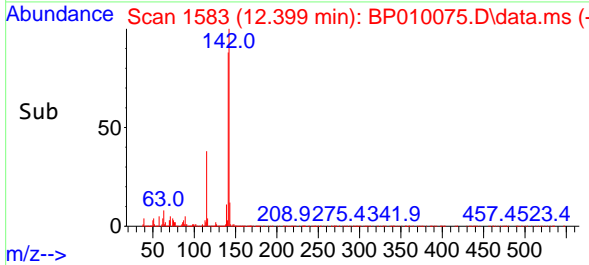
Reviewed By :Jagrut Upadhyay 04/25/2022
 Supervised By :mohammad ahmed 04/26/2022

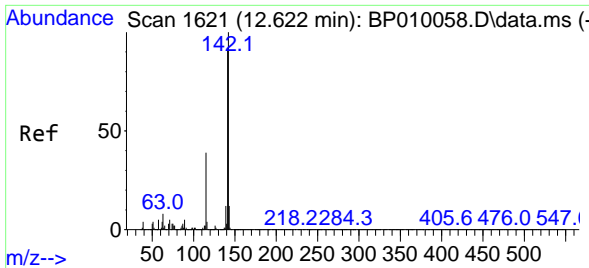


#36
 2-Methylnaphthalene
 Concen: 31.777 ng/ul
 RT: 12.399 min Scan# 1583
 Delta R.T. -0.006 min
 Lab File: BP010075.D
 Acq: 23 Apr 2022 02:43



Tgt Ion:142 Resp: 889489
 Ion Ratio Lower Upper
 142 100
 141 87.5 64.3 96.5





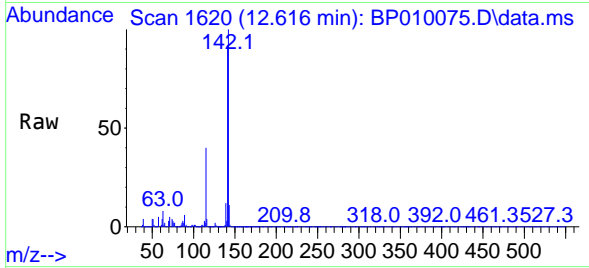
#37
 1-Methylnaphthalene
 Concen: 32.234 ng/uI
 RT: 12.616 min Scan# 1620
 Delta R.T. -0.006 min
 Lab File: BP010075.D
 Acq: 23 Apr 2022 02:43

Instrument :

BNA_P

ClientSampleId :

SLCS305

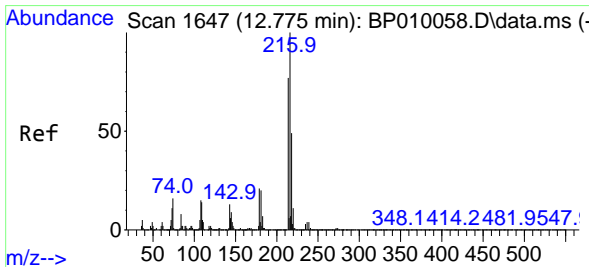
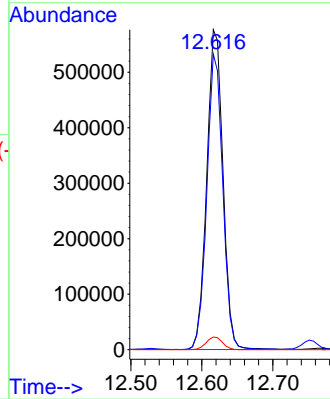
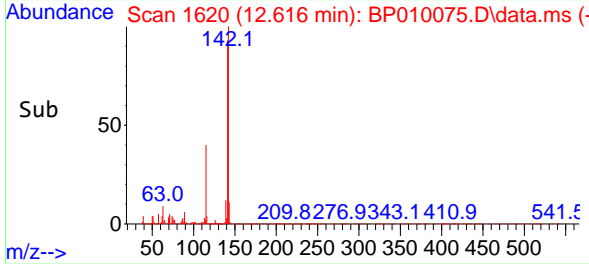


Tgt Ion:142 Resp: 91615
 Ion Ratio Lower Upper
 142 100
 141 92.3 69.8 104.8
 116 4.0 5.6 8.4

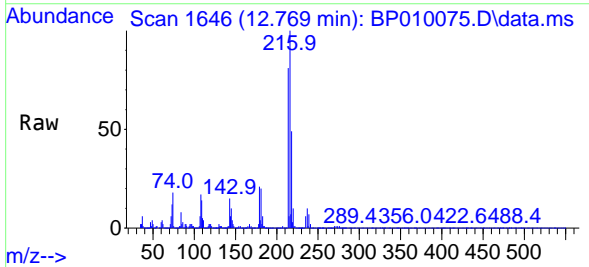
Manual Integrations

APPROVED

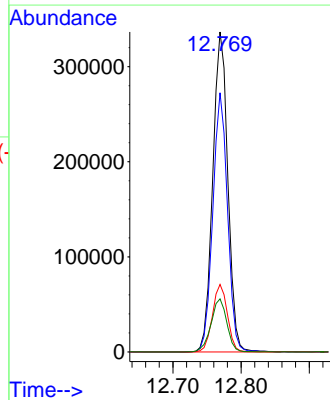
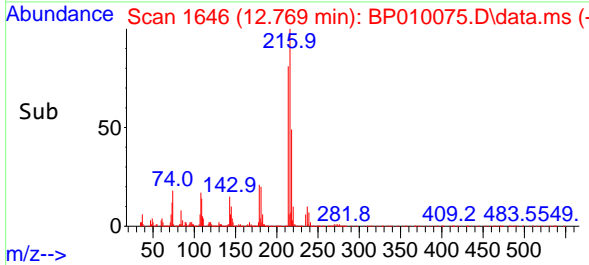
Reviewed By :Jagrut Upadhyay 04/25/2022
 Supervised By :mohammad ahmed 04/26/2022

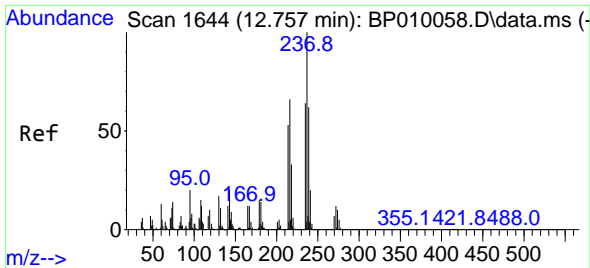


#39
 1,2,4,5-Tetrachlorobenzene
 Concen: 32.094 ng/uI
 RT: 12.769 min Scan# 1646
 Delta R.T. -0.006 min
 Lab File: BP010075.D
 Acq: 23 Apr 2022 02:43



Tgt Ion:216 Resp: 518414
 Ion Ratio Lower Upper
 216 100
 214 81.0 58.2 87.2
 179 21.1 14.2 21.2
 108 16.6 15.3 22.9





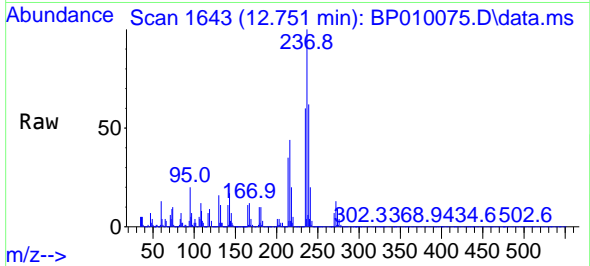
#40
 Hexachlorocyclopentadiene
 Concen: 23.973 ng/u1
 RT: 12.751 min Scan# 10
 Delta R.T. -0.006 min
 Lab File: BP010075.D
 Acq: 23 Apr 2022 02:43

Instrument :

BNA_P

Client SampleId :

SLCS305

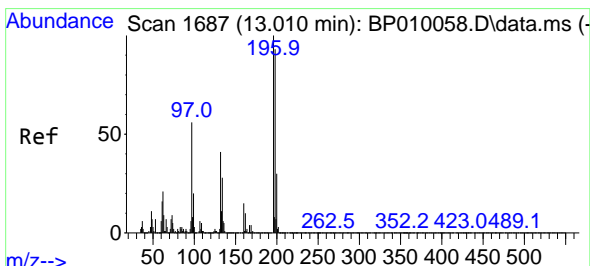
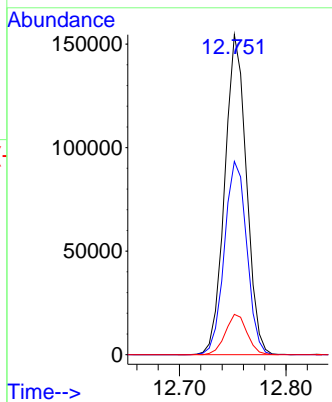
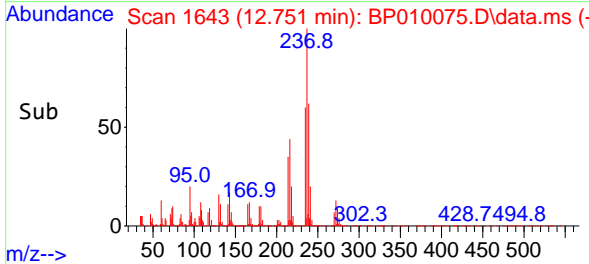


Tgt Ion:237 Resp: 21823
 Ion Ratio Lower Upper
 237 100
 235 60.4 53.2 79.8
 272 12.6 10.8 16.2

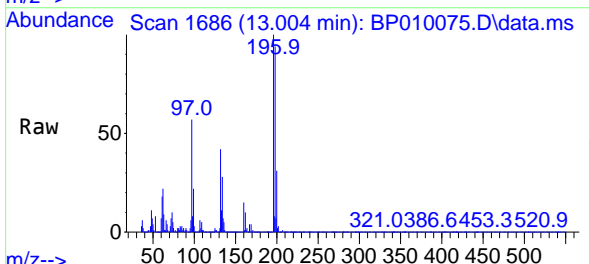
Manual Integrations

APPROVED

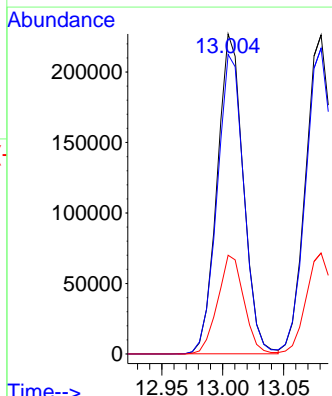
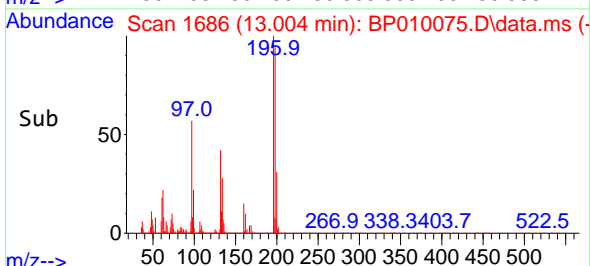
Reviewed By :Jagrut Upadhyay 04/25/2022
 Supervised By :mohammad ahmed 04/26/2022

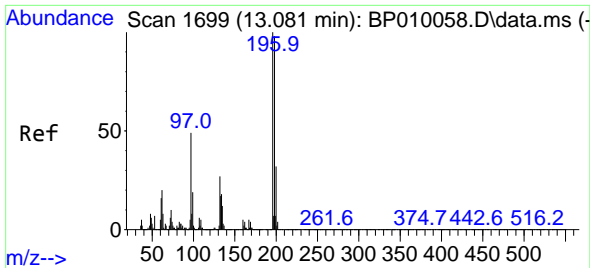


#41
 2,4,6-Trichlorophenol
 Concen: 32.447 ng/u1
 RT: 13.004 min Scan# 1686
 Delta R.T. -0.006 min
 Lab File: BP010075.D
 Acq: 23 Apr 2022 02:43



Tgt Ion:196 Resp: 339114
 Ion Ratio Lower Upper
 196 100
 198 93.6 64.1 96.1
 200 30.8 19.9 29.9#





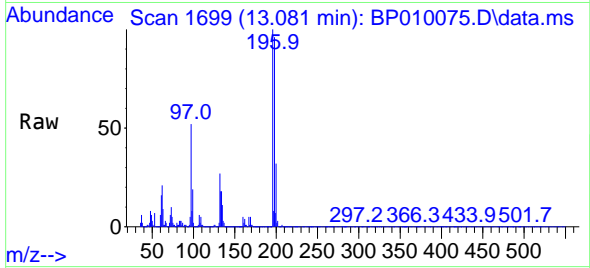
#42
 2,4,5-Trichlorophenol
 Concen: 31.444 ng/u1
 RT: 13.081 min Scan# 1699
 Delta R.T. 0.000 min
 Lab File: BP010075.D
 Acq: 23 Apr 2022 02:43

Instrument :

BNA_P

ClientSampleId :

SLCS305

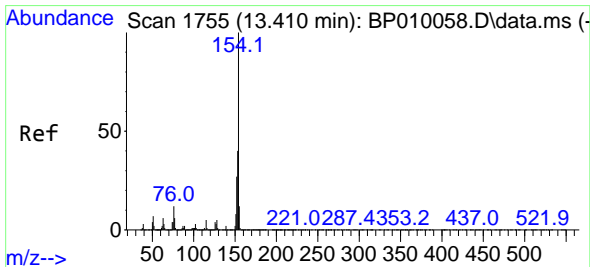
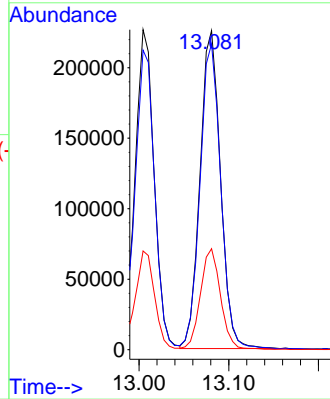
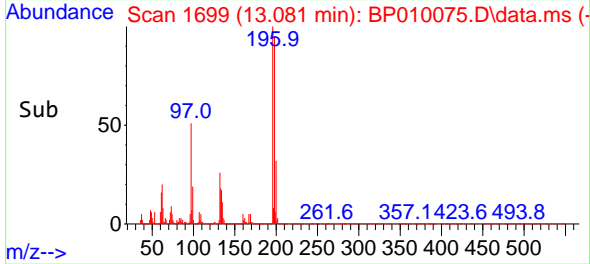


Tgt Ion:196 Resp: 35756
 Ion Ratio Lower Upper
 196 100
 198 95.8 68.6 103.0
 200 31.6 32.8 49.2

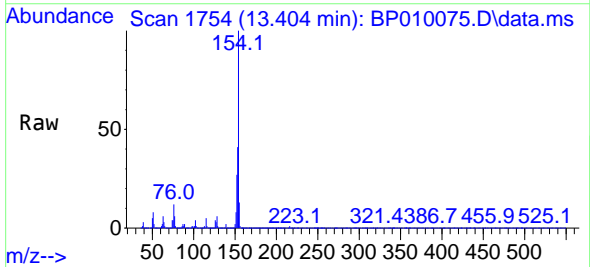
Manual Integrations

APPROVED

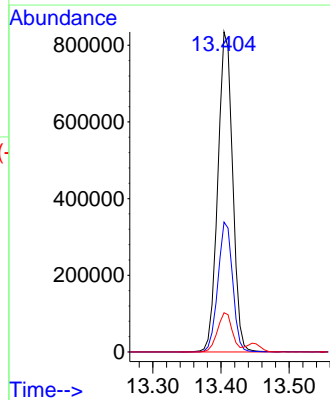
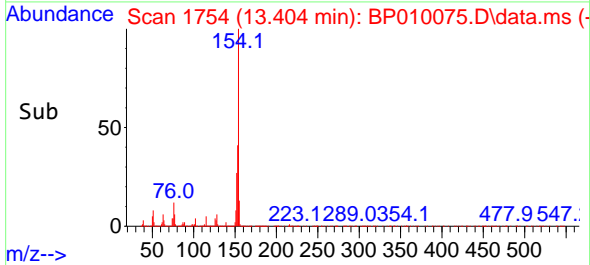
Reviewed By :Jagrut Upadhyay 04/25/2022
 Supervised By :mohammad ahmed 04/26/2022

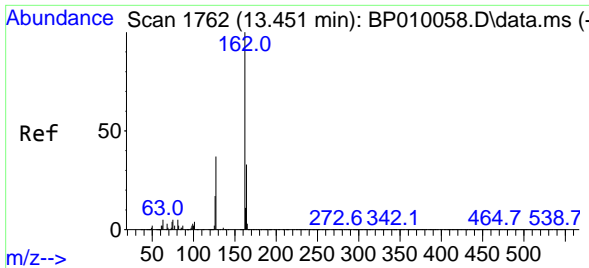


#43
 1,1'-Biphenyl
 Concen: 32.743 ng/u1
 RT: 13.404 min Scan# 1754
 Delta R.T. -0.006 min
 Lab File: BP010075.D
 Acq: 23 Apr 2022 02:43



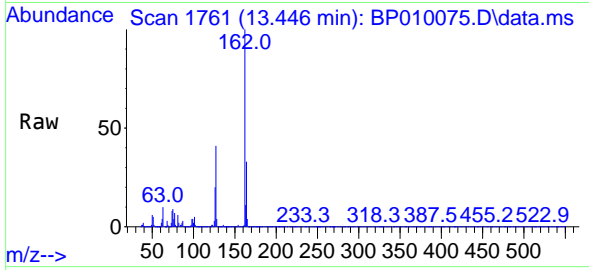
Tgt Ion:154 Resp: 1262643
 Ion Ratio Lower Upper
 154 100
 153 40.6 28.6 43.0
 76 12.2 8.5 12.7





#44
 2-Chloronaphthalene
 Concen: 32.666 ng/u1
 RT: 13.446 min Scan# 1761
 Delta R.T. -0.006 min
 Lab File: BP010075.D
 Acq: 23 Apr 2022 02:43

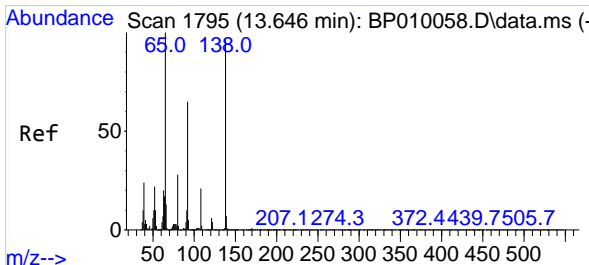
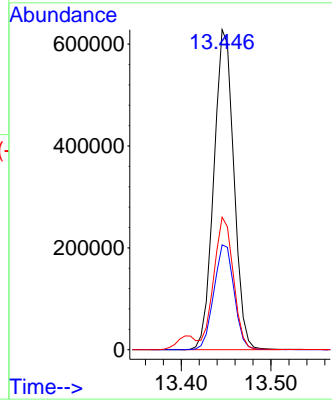
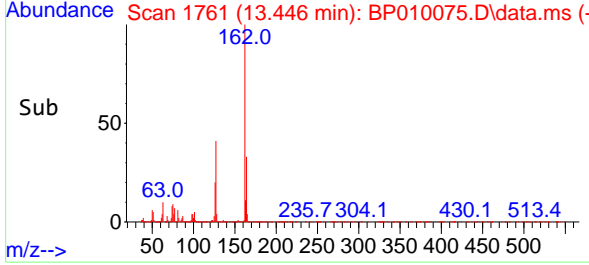
Instrument : BNA_P
 ClientSampleId : SLCS305



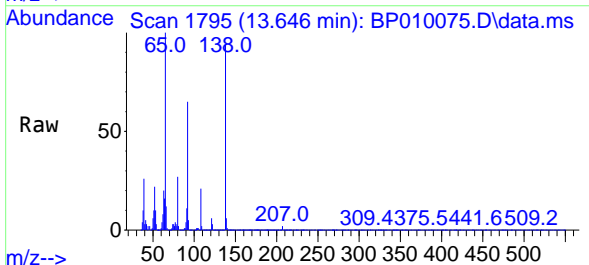
Tgt Ion:162 Resp: 97482

Ion	Ratio	Lower	Upper
162	100		
164	32.7	27.5	41.3
127	41.4	37.1	55.7

Manual Integrations
APPROVED
 Reviewed By :Jagrut Upadhyay 04/25/2022
 Supervised By :mohammad ahmed 04/26/2022

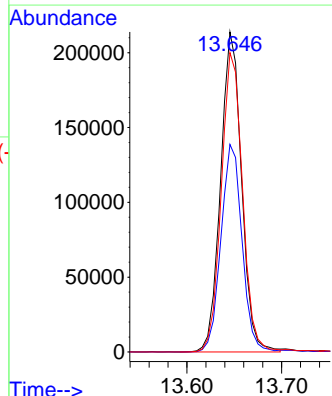
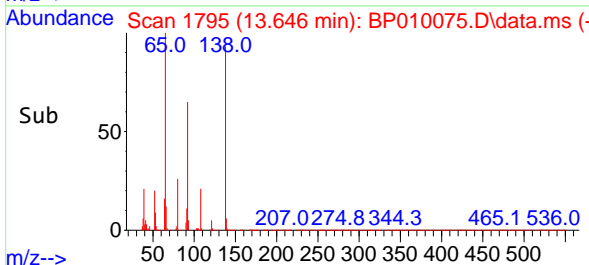


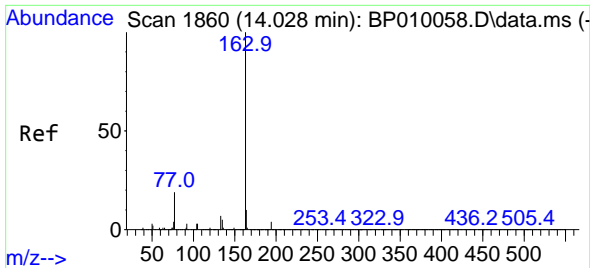
#45
 2-Nitroaniline
 Concen: 33.971 ng/u1
 RT: 13.646 min Scan# 1795
 Delta R.T. 0.000 min
 Lab File: BP010075.D
 Acq: 23 Apr 2022 02:43



Tgt Ion: 65 Resp: 328729

Ion	Ratio	Lower	Upper
65	100		
92	64.8	77.9	116.9#
138	93.6	81.5	122.3





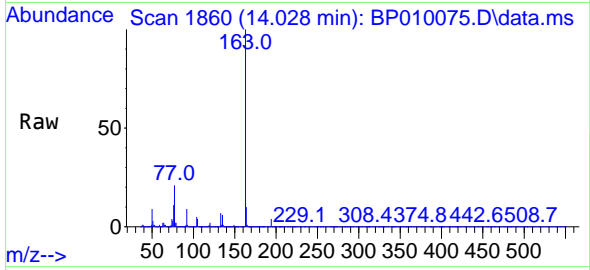
#47
 Dimethylphthalate
 Concen: 32.534 ng/u1
 RT: 14.028 min Scan# 1860
 Delta R.T. 0.000 min
 Lab File: BP010075.D
 Acq: 23 Apr 2022 02:43

Instrument :

BNA_P

ClientSampleId :

SLCS305

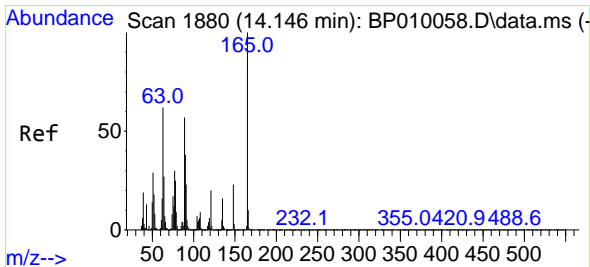
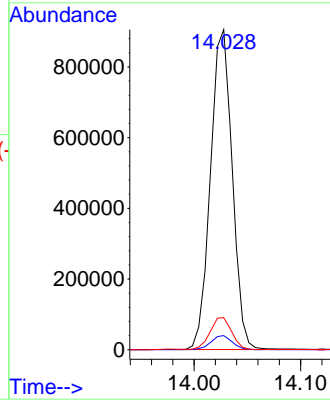
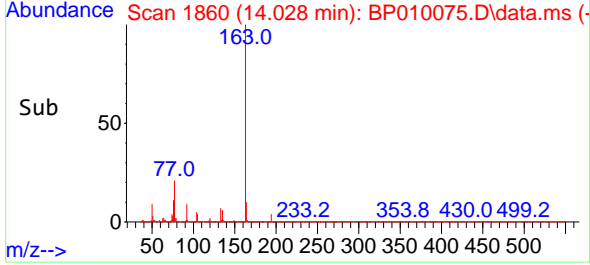


Tgt Ion:163 Resp: 1285970
 Ion Ratio Lower Upper
 163 100
 194 4.4 4.1 6.1
 164 10.0 11.3 16.9

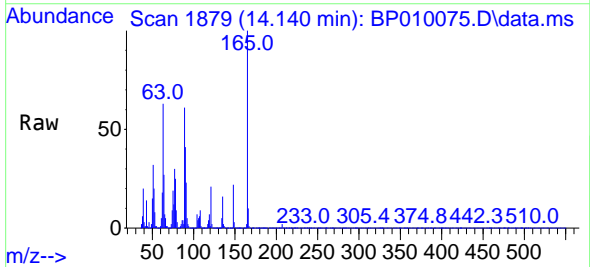
Manual Integrations

APPROVED

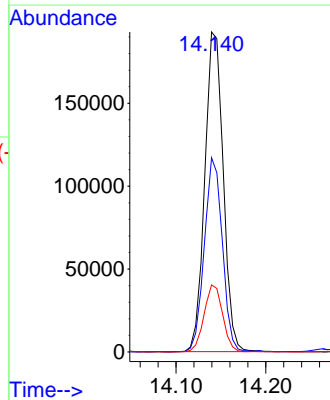
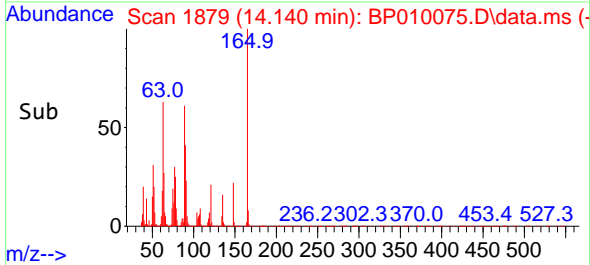
Reviewed By :Jagrut Upadhyay 04/25/2022
 Supervised By :mohammad ahmed 04/26/2022

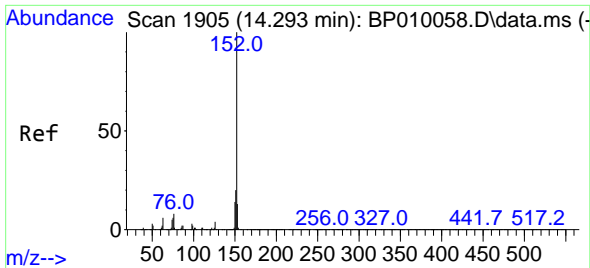


#48
 2,6-Dinitrotoluene
 Concen: 33.998 ng/u1
 RT: 14.140 min Scan# 1879
 Delta R.T. -0.006 min
 Lab File: BP010075.D
 Acq: 23 Apr 2022 02:43



Tgt Ion:165 Resp: 275780
 Ion Ratio Lower Upper
 165 100
 89 60.7 51.7 77.5
 121 21.0 18.3 27.5





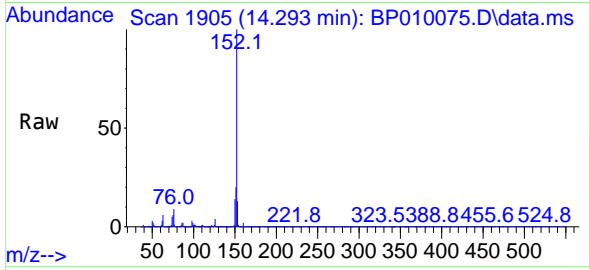
#50
 Acenaphthylene
 Concen: 32.622 ng/u1
 RT: 14.293 min Scan# 1905
 Delta R.T. 0.000 min
 Lab File: BP010075.D
 Acq: 23 Apr 2022 02:43

Instrument :

BNA_P

Client SampleId :

SLCS305

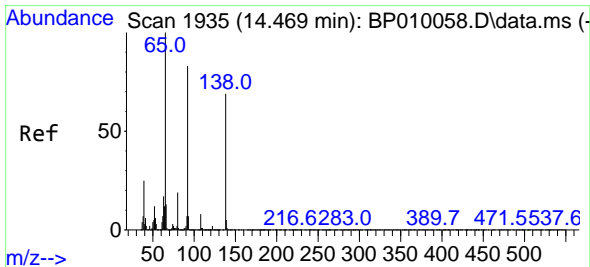
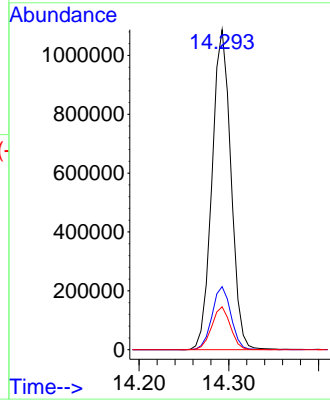
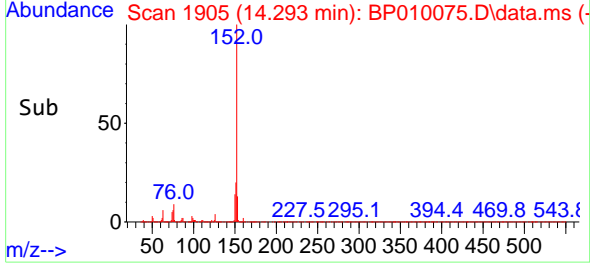


Tgt Ion:152 Resp: 159054
 Ion Ratio Lower Upper
 152 100
 151 19.7 18.3 27.5
 153 13.4 11.0 16.6

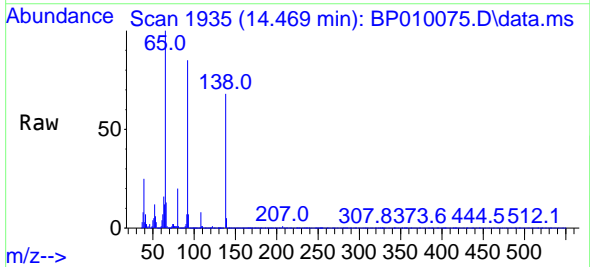
Manual Integrations

APPROVED

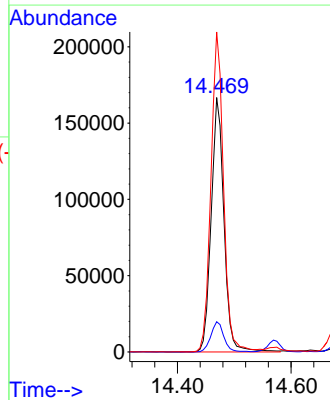
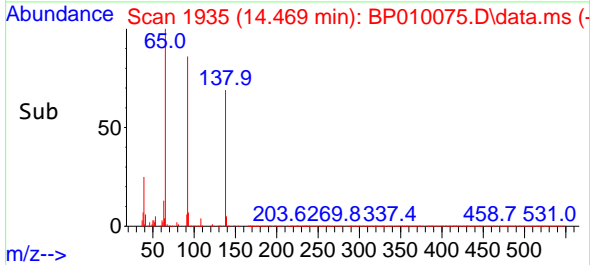
Reviewed By :Jagrut Upadhyay 04/25/2022
 Supervised By :mohammad ahmed 04/26/2022

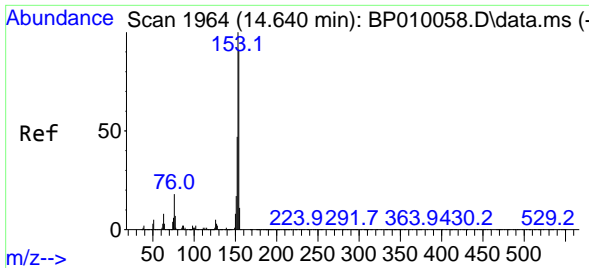


#51
 3-Nitroaniline
 Concen: 35.235 ng/u1
 RT: 14.469 min Scan# 1935
 Delta R.T. 0.000 min
 Lab File: BP010075.D
 Acq: 23 Apr 2022 02:43



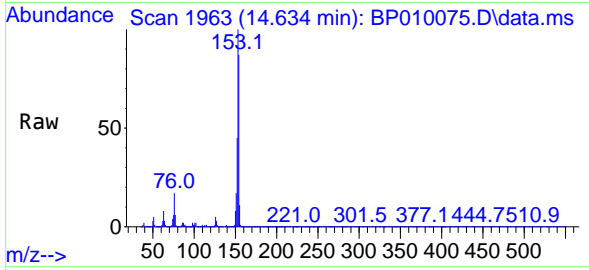
Tgt Ion:138 Resp: 258910
 Ion Ratio Lower Upper
 138 100
 108 11.9 15.8 23.8#
 92 125.7 117.1 175.7





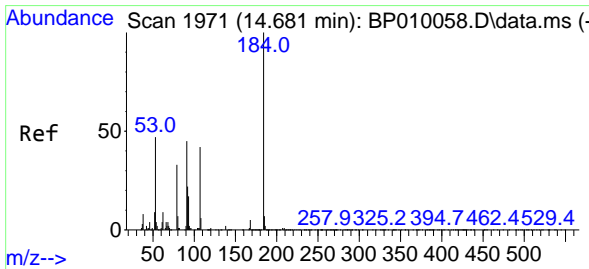
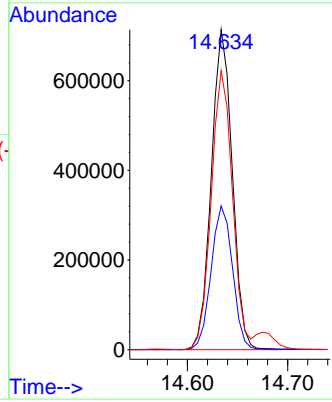
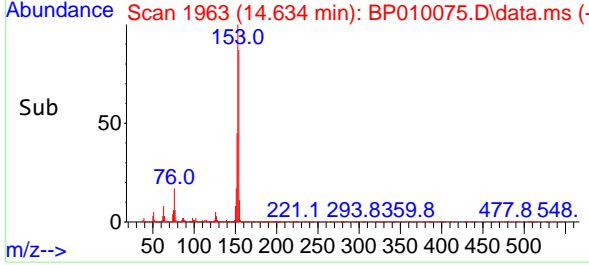
#52
 Acenaphthene
 Concen: 32.702 ng/u1
 RT: 14.634 min Scan# 1963
 Delta R.T. -0.006 min
 Lab File: BP010075.D
 Acq: 23 Apr 2022 02:43

Instrument : BNA_P
 Client SampleId : SLCS305

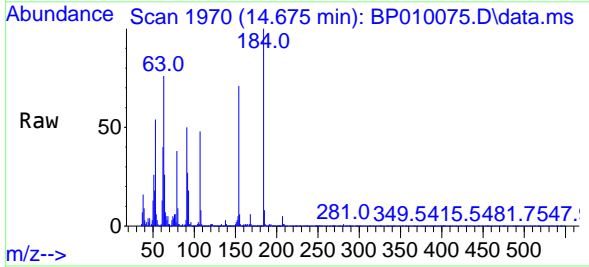


Tgt Ion:153 Resp: 103678
 Ion Ratio Lower Upper
 153 100
 152 44.9 34.3 51.5
 154 87.1 70.0 105.0

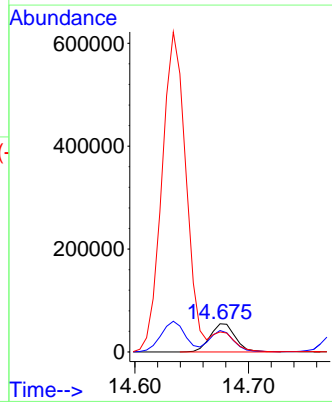
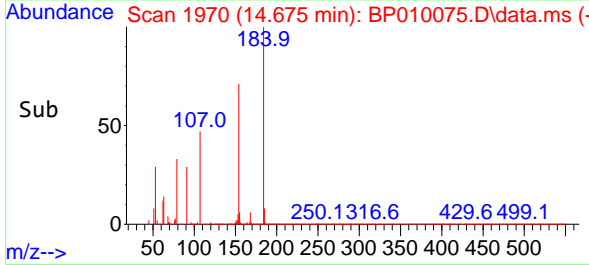
Manual Integrations
APPROVED
 Reviewed By :Jagrut Upadhyay 04/25/2022
 Supervised By :mohammad ahmed 04/26/2022

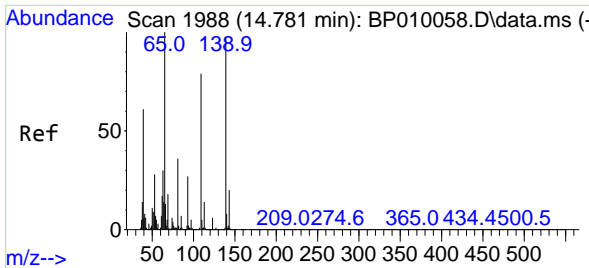


#53
 2,4-Dinitrophenol
 Concen: 18.702 ng/u1
 RT: 14.675 min Scan# 1970
 Delta R.T. 0.000 min
 Lab File: BP010075.D
 Acq: 23 Apr 2022 02:43



Tgt Ion:184 Resp: 84771
 Ion Ratio Lower Upper
 184 100
 63 76.0 34.6 52.0#
 154 70.9 57.7 86.5





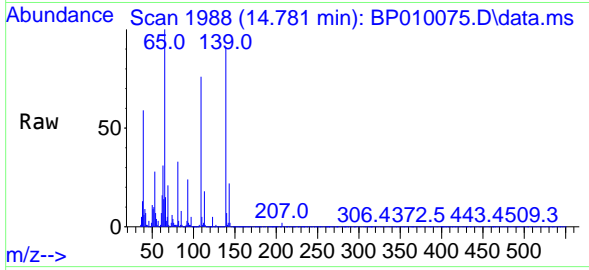
#55
 4-Nitrophenol
 Concen: 27.036 ng/u1
 RT: 14.781 min Scan# 1988
 Delta R.T. 0.006 min
 Lab File: BP010075.D
 Acq: 23 Apr 2022 02:43

Instrument :

BNA_P

ClientSampleId :

SLCS305

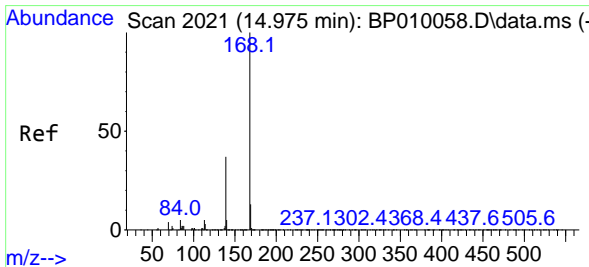
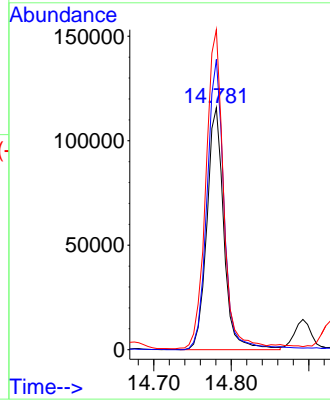
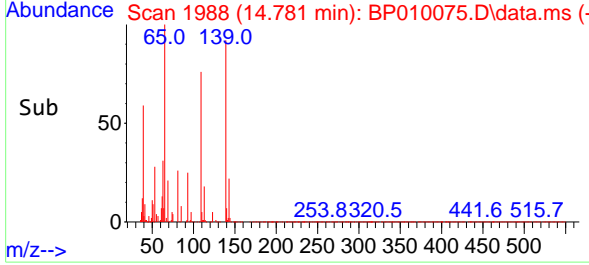


Tgt Ion:109 Resp: 175870
 Ion Ratio Lower Upper
 109 100
 139 120.0 61.4 92.2
 65 132.3 65.3 97.9

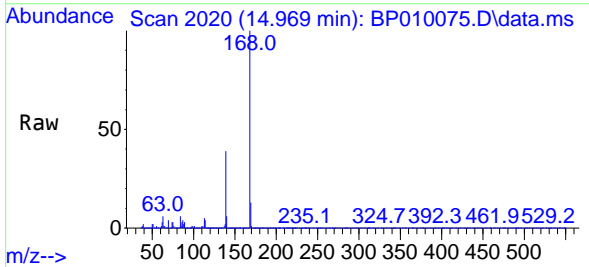
Manual Integrations

APPROVED

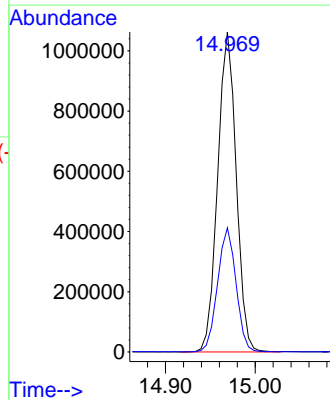
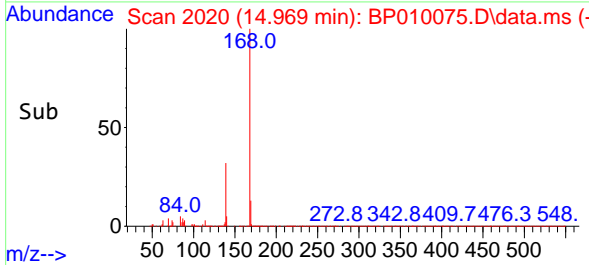
Reviewed By :Jagrut Upadhyay 04/25/2022
 Supervised By :mohammad ahmed 04/26/2022

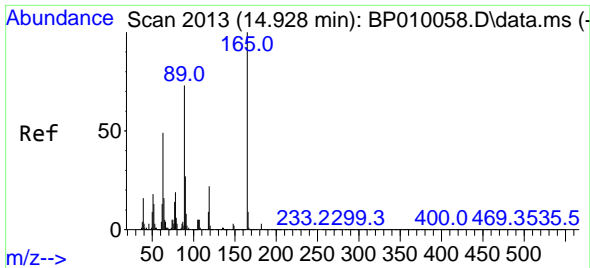


#56
 Dibenzofuran
 Concen: 32.511 ng/u1
 RT: 14.969 min Scan# 2020
 Delta R.T. 0.000 min
 Lab File: BP010075.D
 Acq: 23 Apr 2022 02:43



Tgt Ion:168 Resp: 1526295
 Ion Ratio Lower Upper
 168 100
 139 38.8 30.1 45.1





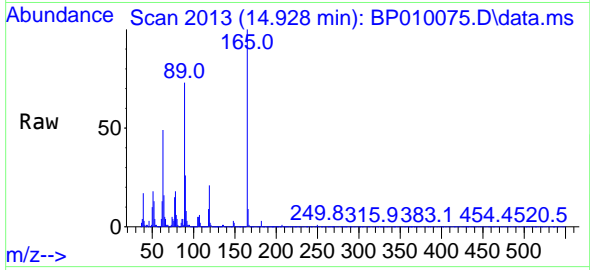
#57
 2,4-Dinitrotoluene
 Concen: 33.413 ng/ul
 RT: 14.928 min Scan# 2013
 Delta R.T. 0.000 min
 Lab File: BP010075.D
 Acq: 23 Apr 2022 02:43

Instrument :

BNA_P

Client Sample Id :

SLCS305

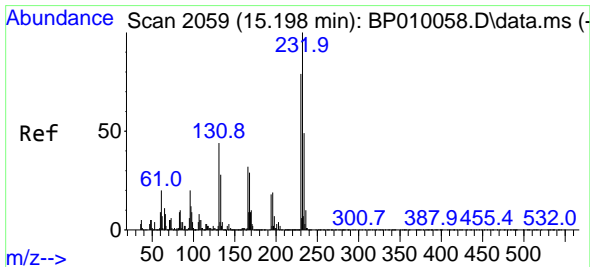
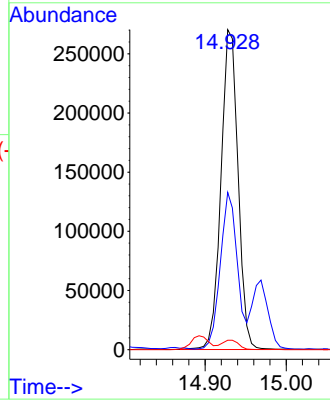
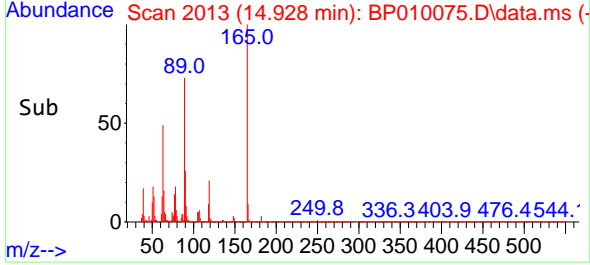


Tgt Ion:165 Resp: 395940
 Ion Ratio Lower Upper
 165 100
 63 49.1 29.5 44.3#
 182 3.0 2.8 4.2

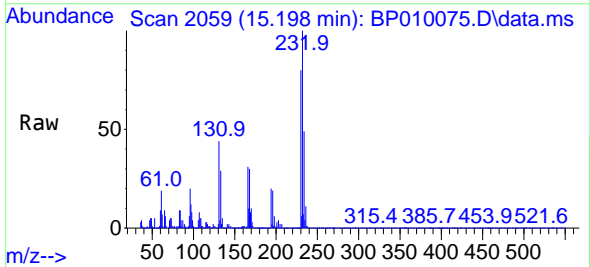
Manual Integrations

APPROVED

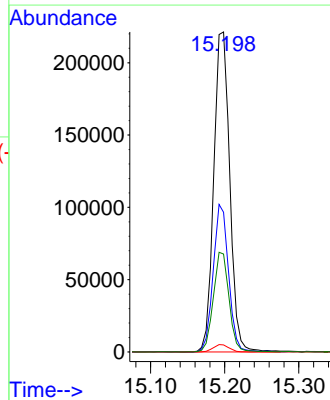
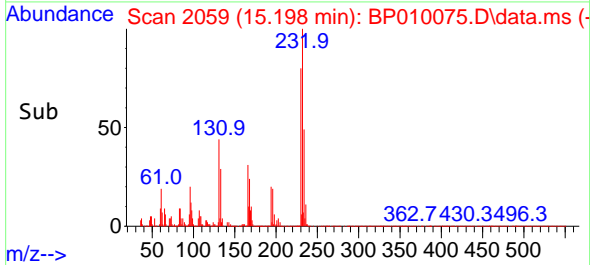
Reviewed By :Jagrut Upadhyay 04/25/2022
 Supervised By :mohammad ahmed 04/26/2022

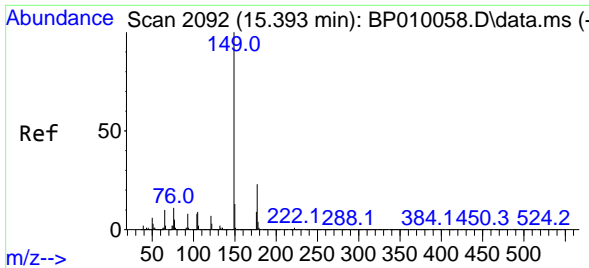


#58
 2,3,4,6-Tetrachlorophenol
 Concen: 32.842 ng/ul
 RT: 15.198 min Scan# 2059
 Delta R.T. 0.000 min
 Lab File: BP010075.D
 Acq: 23 Apr 2022 02:43



Tgt Ion:232 Resp: 331972
 Ion Ratio Lower Upper
 232 100
 131 43.6 25.4 38.2#
 130 2.2 4.2 6.2#
 166 30.6 28.1 42.1





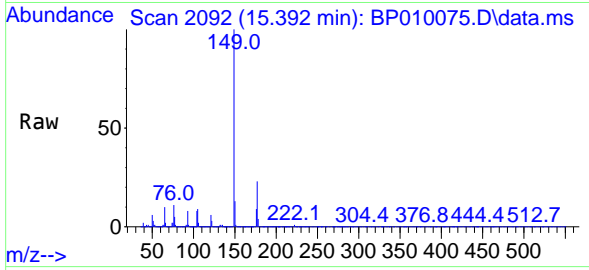
#59
 Diethylphthalate
 Concen: 32.833 ng/u1
 RT: 15.392 min Scan# 2092
 Delta R.T. 0.000 min
 Lab File: BP010075.D
 Acq: 23 Apr 2022 02:43

Instrument :

BNA_P

ClientSampleId :

SLCS305

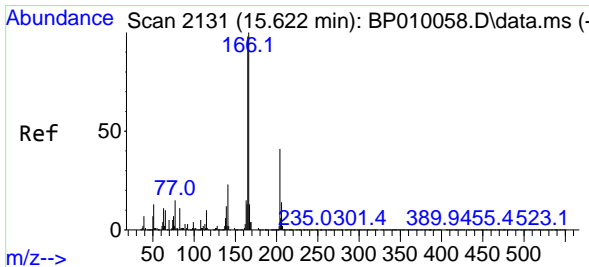
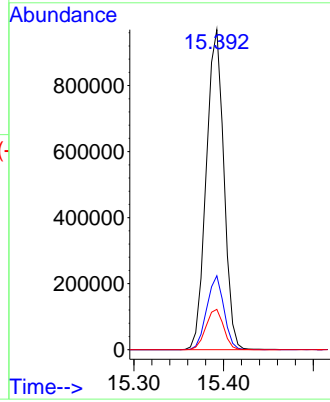
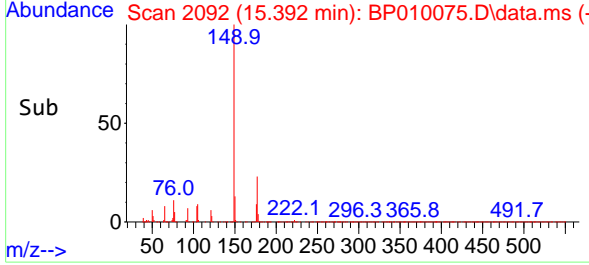


Tgt Ion:149 Resp: 1320030
 Ion Ratio Lower Upper
 149 100
 177 23.1 22.0 33.0
 150 12.6 10.2 15.2

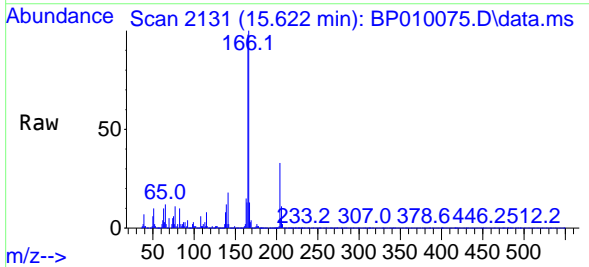
Manual Integrations

APPROVED

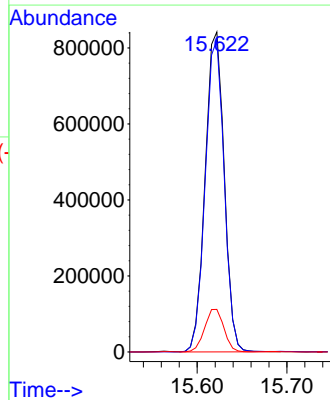
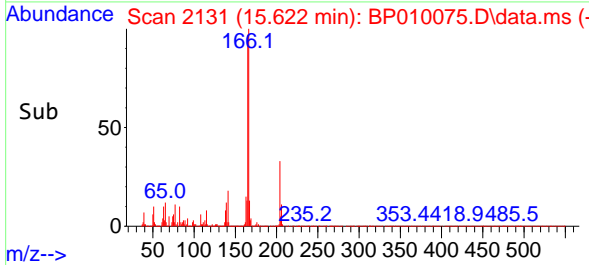
Reviewed By :Jagrut Upadhyay 04/25/2022
 Supervised By :mohammad ahmed 04/26/2022

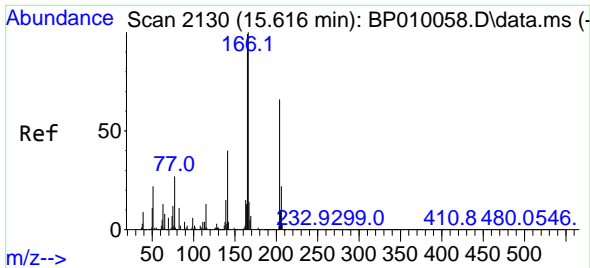


#61
 Fluorene
 Concen: 32.178 ng/u1
 RT: 15.622 min Scan# 2131
 Delta R.T. 0.000 min
 Lab File: BP010075.D
 Acq: 23 Apr 2022 02:43



Tgt Ion:166 Resp: 1240279
 Ion Ratio Lower Upper
 166 100
 165 97.5 70.3 105.5
 167 13.3 9.5 14.3





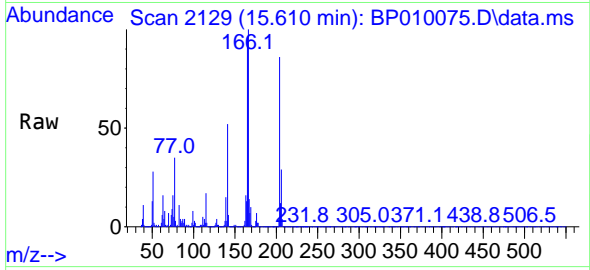
#62
 4-Chlorophenyl-phenylether
 Concen: 32.212 ng/ul
 RT: 15.610 min Scan# 2129
 Delta R.T. -0.006 min
 Lab File: BP010075.D
 Acq: 23 Apr 2022 02:43

Instrument :

BNA_P

Client SampleId :

SLCS305

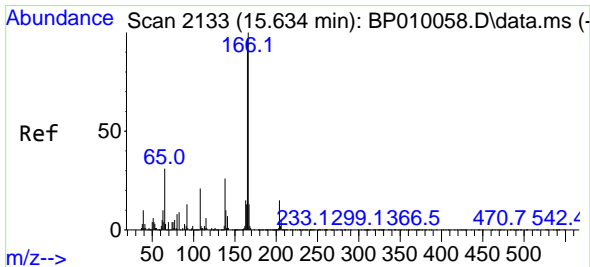
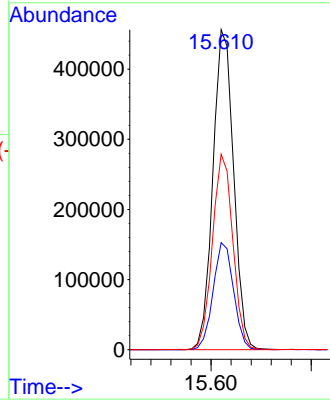
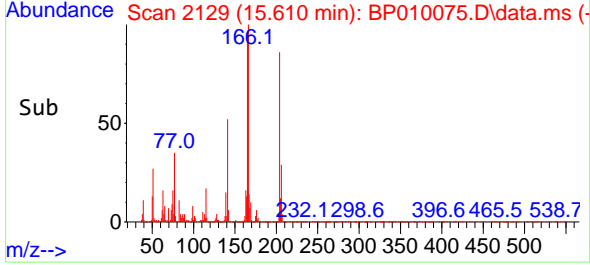


Tgt Ion: 204 Resp: 653430
 Ion Ratio Lower Upper
 204 100
 206 33.4 27.6 41.4
 141 61.0 46.6 69.8

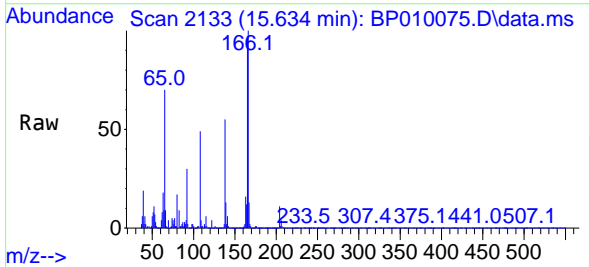
Manual Integrations

APPROVED

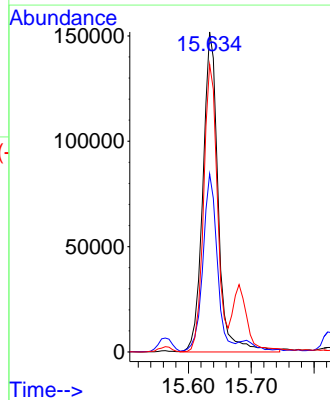
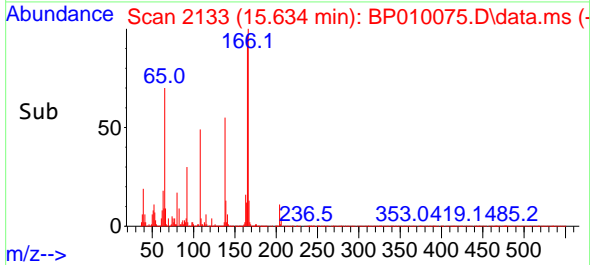
Reviewed By :Jagrut Upadhyay 04/25/2022
 Supervised By :mohammad ahmed 04/26/2022

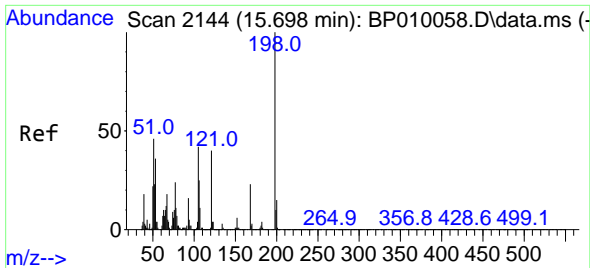


#63
 4-Nitroaniline
 Concen: 36.095 ng/ul m
 RT: 15.634 min Scan# 2133
 Delta R.T. 0.000 min
 Lab File: BP010075.D
 Acq: 23 Apr 2022 02:43



Tgt Ion: 138 Resp: 258085
 Ion Ratio Lower Upper
 138 100
 92 55.6 41.6 62.4
 108 89.9 97.6 146.4#





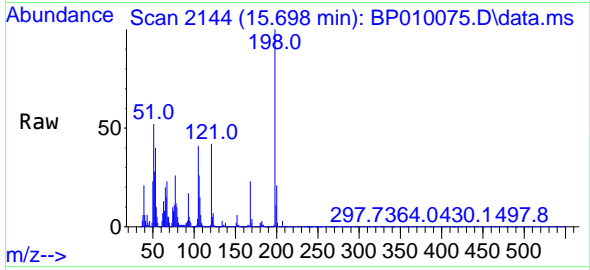
#66
 4,6-Dinitro-2-methylphenol
 Concen: 26.229 ng/ul
 RT: 15.698 min Scan# 2144
 Delta R.T. 0.000 min
 Lab File: BP010075.D
 Acq: 23 Apr 2022 02:43

Instrument :

BNA_P

ClientSampleId :

SLCS305

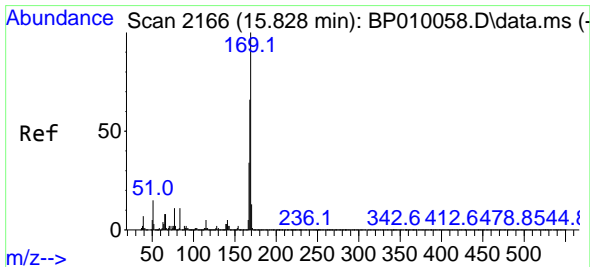
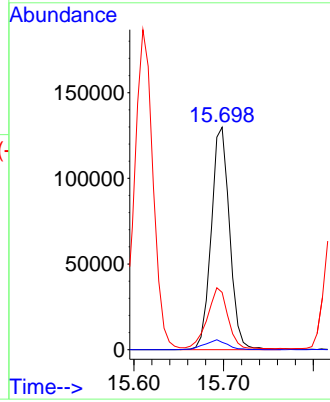
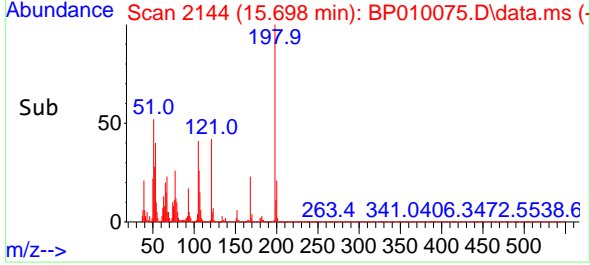


Tgt Ion:198 Resp: 18414
 Ion Ratio Lower Upper
 198 100
 182 3.3 6.0 9.0
 77 25.8 17.7 26.5

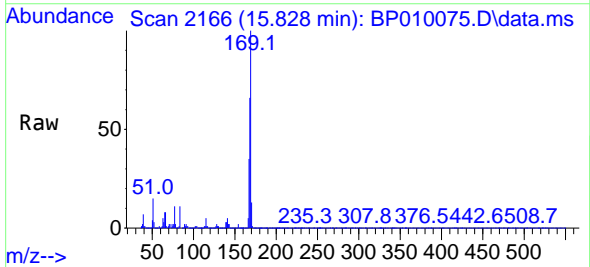
Manual Integrations

APPROVED

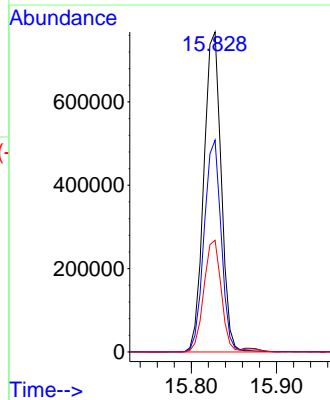
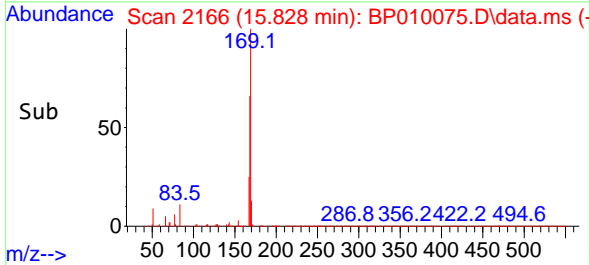
Reviewed By :Jagrut Upadhyay 04/25/2022
 Supervised By :mohammad ahmed 04/26/2022

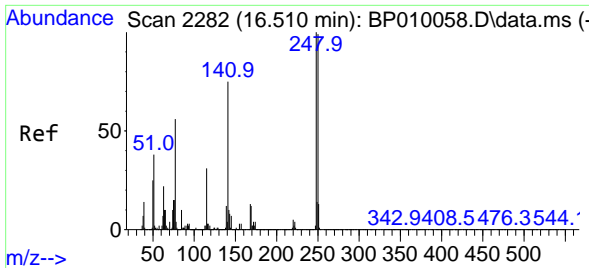


#67
 N-Nitrosodiphenylamine
 Concen: 32.870 ng/ul
 RT: 15.828 min Scan# 2166
 Delta R.T. 0.000 min
 Lab File: BP010075.D
 Acq: 23 Apr 2022 02:43



Tgt Ion:169 Resp: 1085331
 Ion Ratio Lower Upper
 169 100
 168 66.2 48.3 72.5
 167 34.9 29.6 44.4





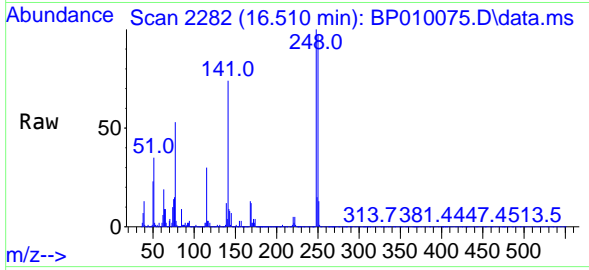
#68
 4-Bromophenyl-phenylether
 Concen: 33.129 ng/ul
 RT: 16.510 min Scan# 21
 Delta R.T. 0.000 min
 Lab File: BP010075.D
 Acq: 23 Apr 2022 02:43

Instrument :

BNA_P

ClientSampleId :

SLCS305

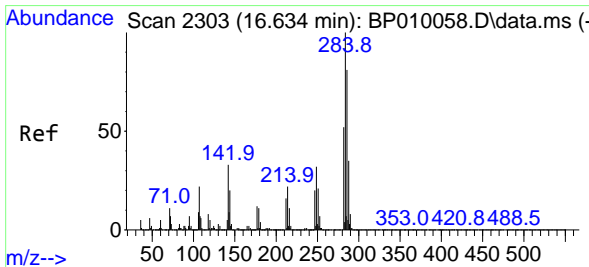
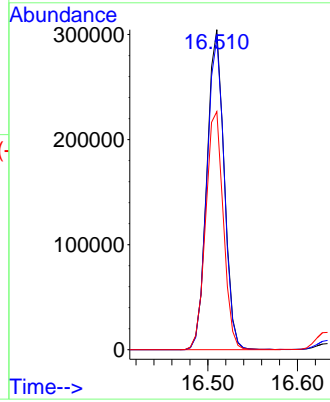
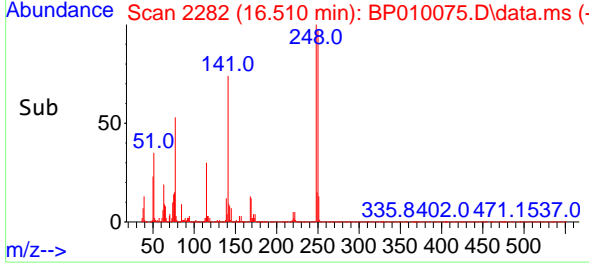


Tgt Ion:248 Resp: 40664
 Ion Ratio Lower Upper
 248 100
 250 97.4 79.4 119.0
 141 74.4 67.2 100.8

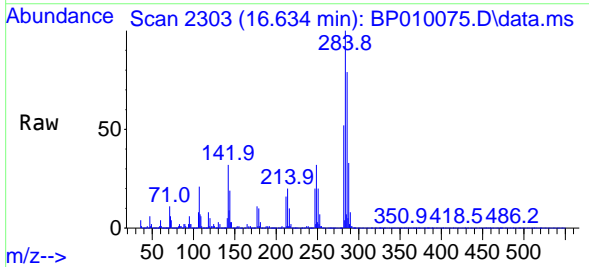
Manual Integrations

APPROVED

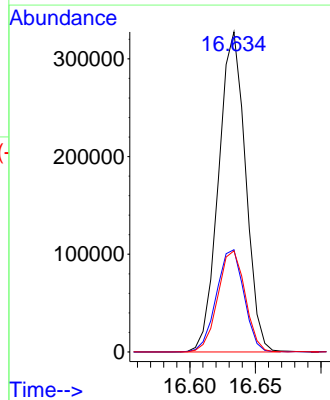
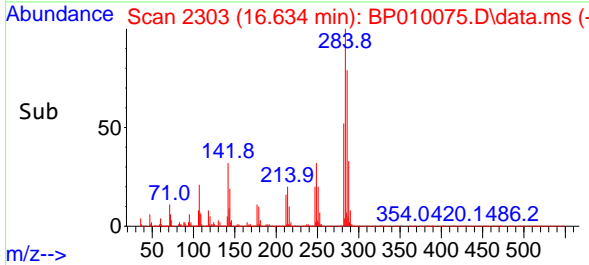
Reviewed By :Jagrut Upadhyay 04/25/2022
 Supervised By :mohammad ahmed 04/26/2022

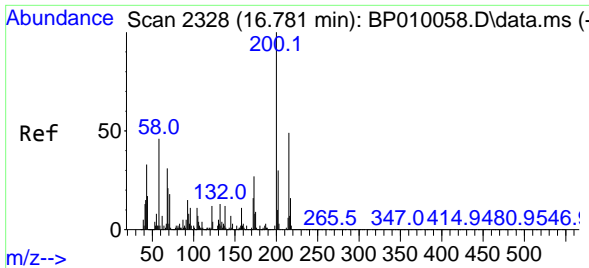


#69
 Hexachlorobenzene
 Concen: 32.862 ng/ul
 RT: 16.634 min Scan# 2303
 Delta R.T. 0.000 min
 Lab File: BP010075.D
 Acq: 23 Apr 2022 02:43



Tgt Ion:284 Resp: 468198
 Ion Ratio Lower Upper
 284 100
 142 32.0 19.2 28.8#
 249 31.6 27.4 41.2





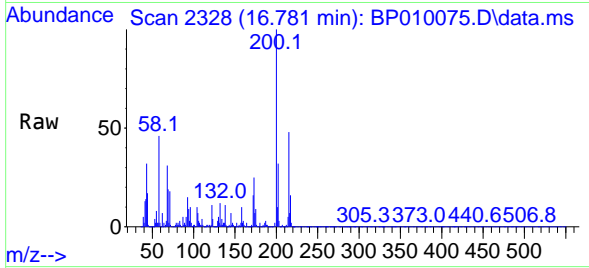
#70
 Atrazine
 Concen: 31.664 ng/u/l
 RT: 16.781 min Scan# 21
 Delta R.T. 0.000 min
 Lab File: BP010075.D
 Acq: 23 Apr 2022 02:43

Instrument :

BNA_P

ClientSampleId :

SLCS305

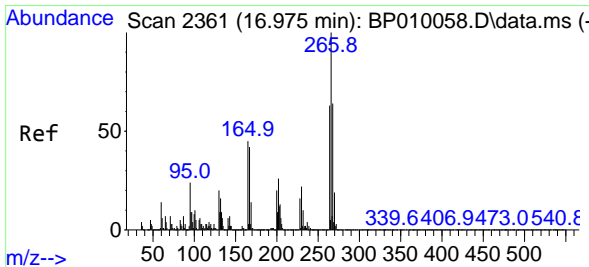
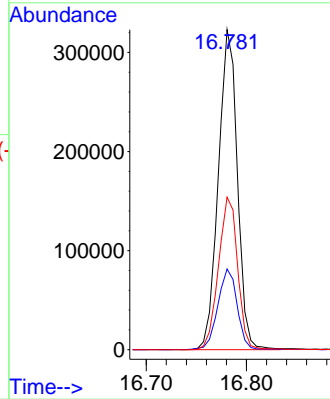
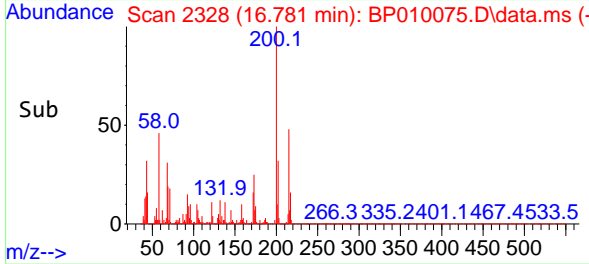


Tgt Ion:200 Resp: 425049
 Ion Ratio Lower Upper
 200 100
 173 25.2 19.2 28.8
 215 47.7 32.2 48.4

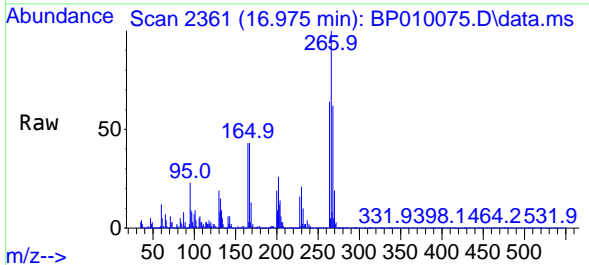
Manual Integrations

APPROVED

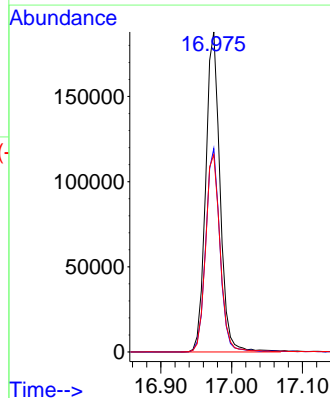
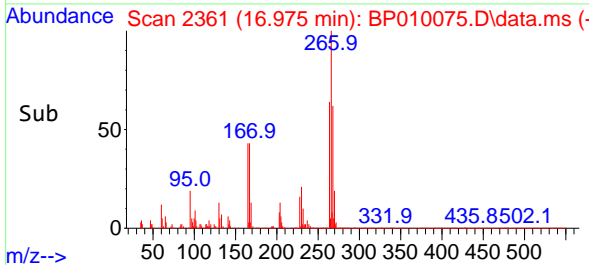
Reviewed By :Jagrut Upadhyay 04/25/2022
 Supervised By :mohammad ahmed 04/26/2022

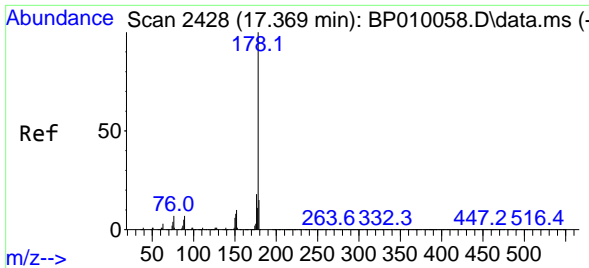


#71
 Pentachlorophenol
 Concen: 29.149 ng/u/l m
 RT: 16.975 min Scan# 2361
 Delta R.T. 0.000 min
 Lab File: BP010075.D
 Acq: 23 Apr 2022 02:43



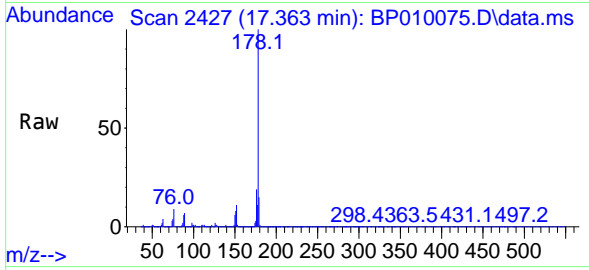
Tgt Ion:266 Resp: 264481
 Ion Ratio Lower Upper
 266 100
 264 63.5 57.3 85.9
 268 61.7 65.7 98.5#





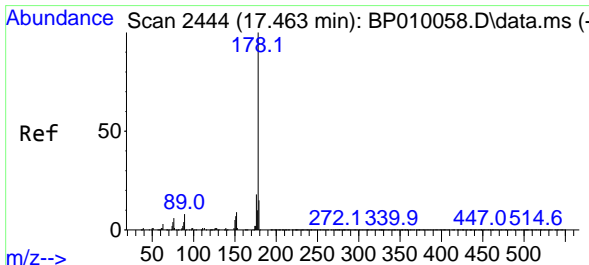
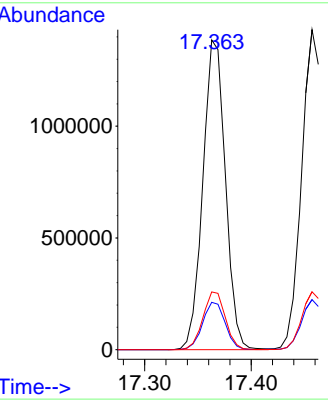
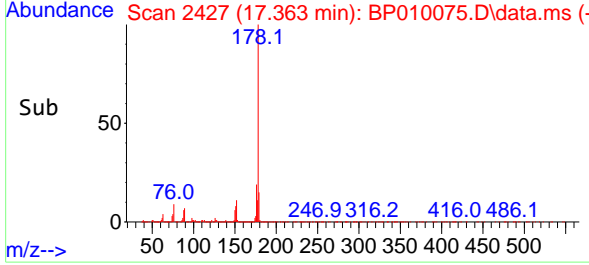
#72
 Phenanthrene
 Concen: 32.571 ng/u1
 RT: 17.363 min Scan# 2427
 Delta R.T. -0.006 min
 Lab File: BP010075.D
 Acq: 23 Apr 2022 02:43

Instrument : BNA_P
 Client Sample Id : SLCS305

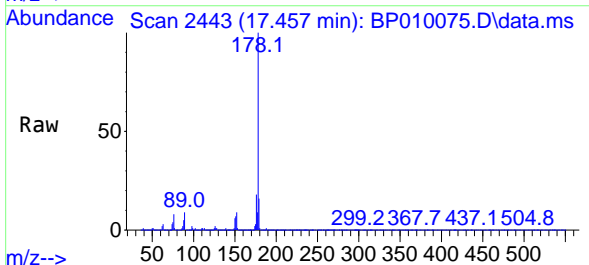


Tgt Ion:178 Resp: 203725
 Ion Ratio Lower Upper
 178 100
 179 15.3 11.7 17.5
 176 18.6 14.5 21.7

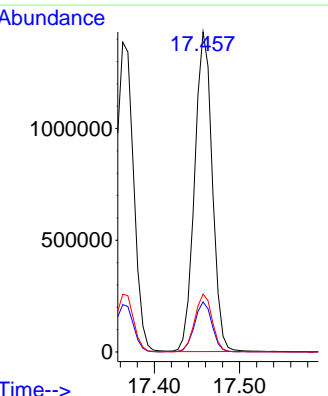
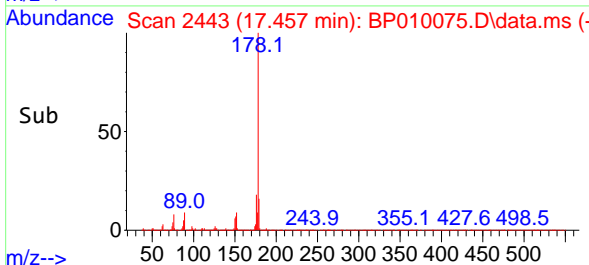
Manual Integrations
APPROVED
 Reviewed By :Jagrut Upadhyay 04/25/2022
 Supervised By :mohammad ahmed 04/26/2022

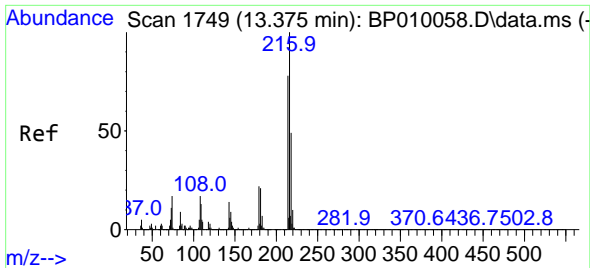


#74
 Anthracene
 Concen: 32.667 ng/u1
 RT: 17.457 min Scan# 2443
 Delta R.T. 0.000 min
 Lab File: BP010075.D
 Acq: 23 Apr 2022 02:43



Tgt Ion:178 Resp: 2058040
 Ion Ratio Lower Upper
 178 100
 179 15.7 12.3 18.5
 176 18.1 13.4 20.2





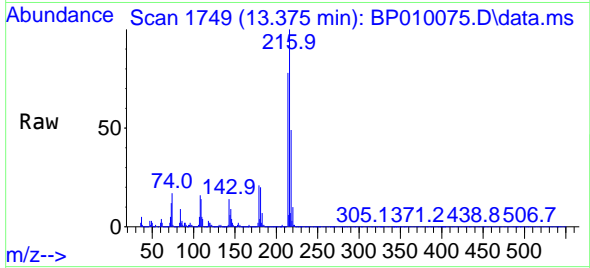
#75
 1,2,3,4-Tetrachlorobenzene
 Concen: 33.110 ng/uL
 RT: 13.375 min Scan# 11
 Delta R.T. 0.000 min
 Lab File: BP010075.D
 Acq: 23 Apr 2022 02:43

Instrument :

BNA_P

ClientSampleId :

SLCS305

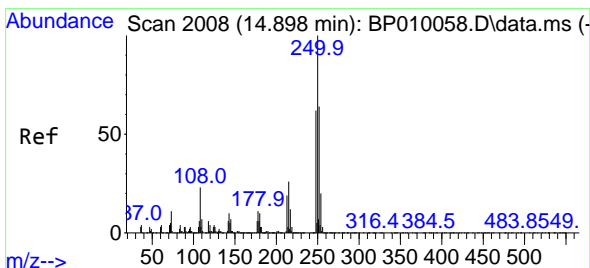
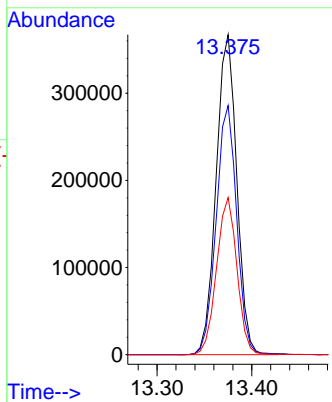
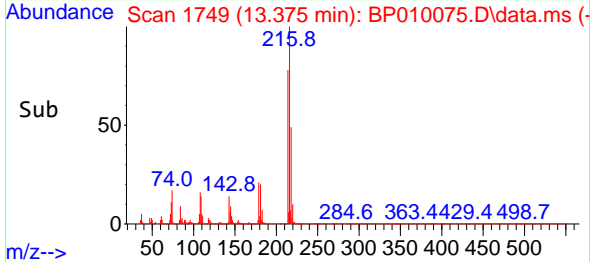


Tgt Ion:216 Resp: 556254
 Ion Ratio Lower Upper
 216 100
 214 77.8 50.4 75.6
 218 49.1 35.2 52.8

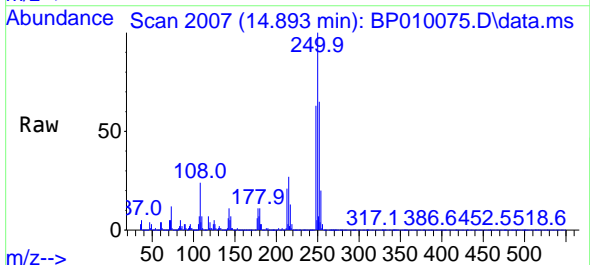
Manual Integrations

APPROVED

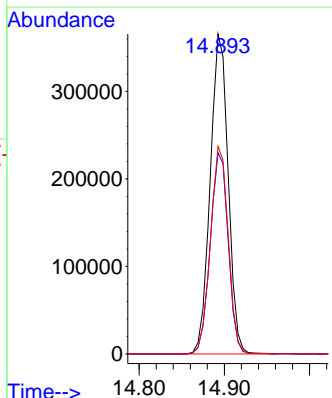
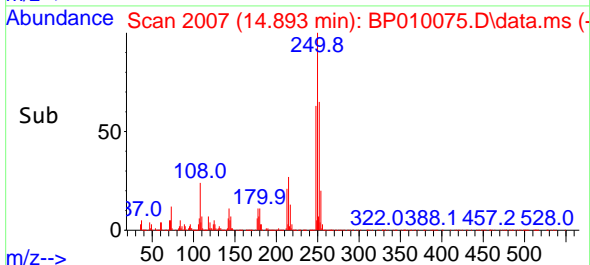
Reviewed By :Jagrut Upadhyay 04/25/2022
 Supervised By :mohammad ahmed 04/26/2022

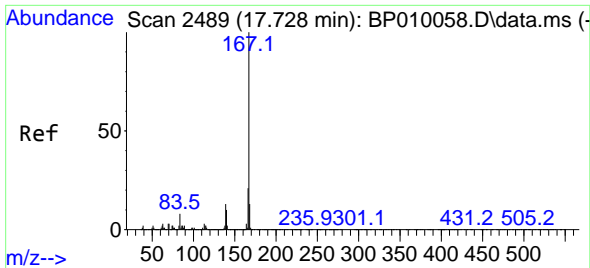


#76
 Pentachlorobenzene
 Concen: 32.423 ng/uL
 RT: 14.893 min Scan# 2007
 Delta R.T. -0.005 min
 Lab File: BP010075.D
 Acq: 23 Apr 2022 02:43



Tgt Ion:250 Resp: 534149
 Ion Ratio Lower Upper
 250 100
 248 62.8 43.5 65.3
 252 64.8 46.5 69.7





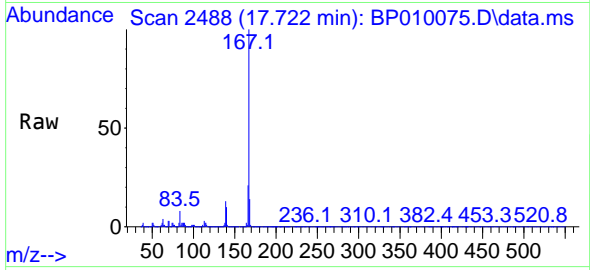
#77
 Carbazole
 Concen: 31.897 ng/uI
 RT: 17.722 min Scan# 2489
 Delta R.T. -0.000 min
 Lab File: BP010075.D
 Acq: 23 Apr 2022 02:43

Instrument :

BNA_P

ClientSampleId :

SLCS305

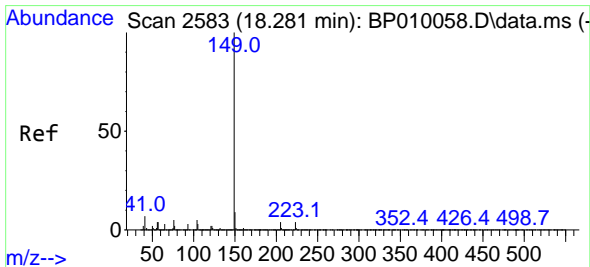
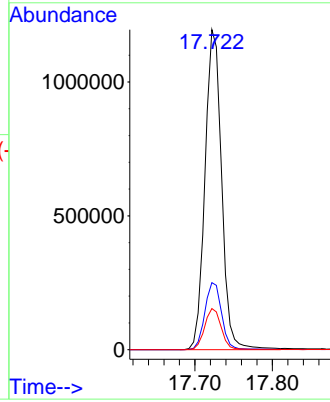
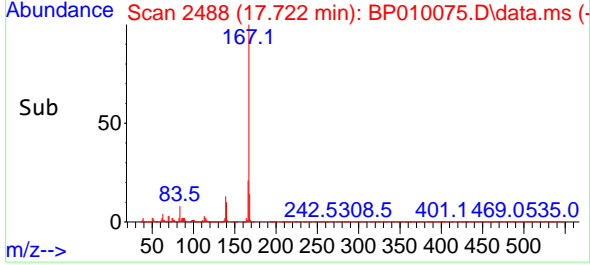


Tgt Ion:167 Resp: 1778220
 Ion Ratio Lower Upper
 167 100
 166 21.0 15.8 23.8
 139 12.9 8.3 12.5

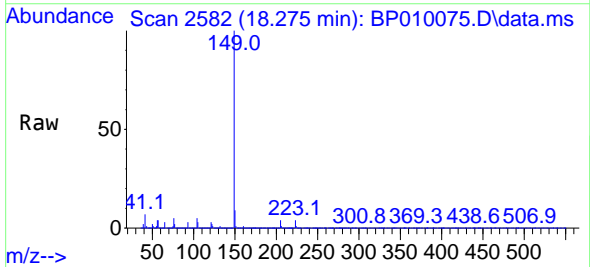
Manual Integrations

APPROVED

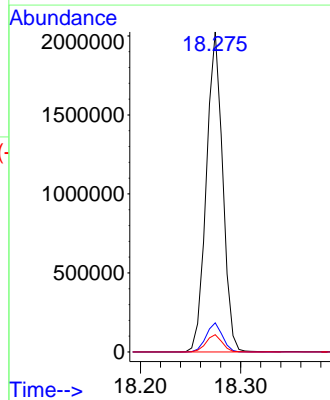
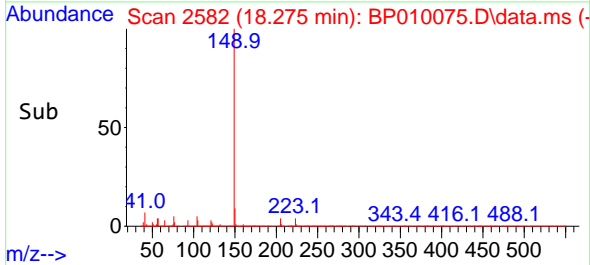
Reviewed By :Jagrut Upadhyay 04/25/2022
 Supervised By :mohammad ahmed 04/26/2022

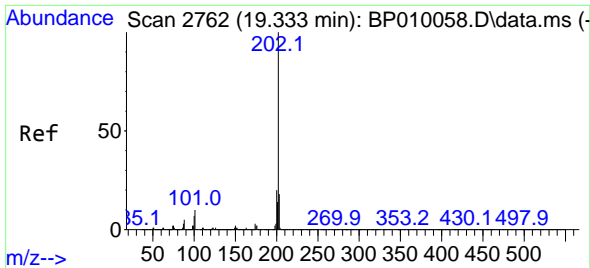


#78
 Di-n-butylphthalate
 Concen: 33.459 ng/uI
 RT: 18.275 min Scan# 2582
 Delta R.T. -0.000 min
 Lab File: BP010075.D
 Acq: 23 Apr 2022 02:43



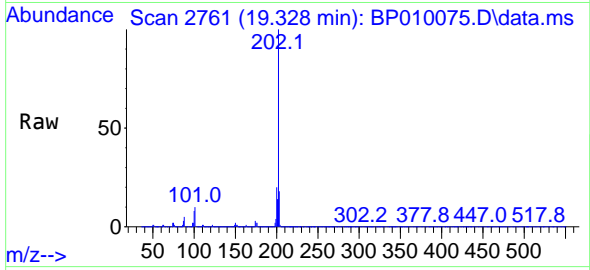
Tgt Ion:149 Resp: 2294833
 Ion Ratio Lower Upper
 149 100
 150 9.1 9.6 14.4#
 104 5.4 6.2 9.4#





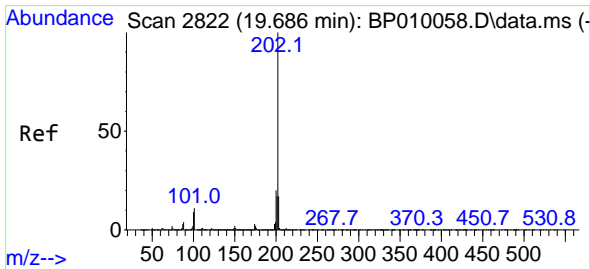
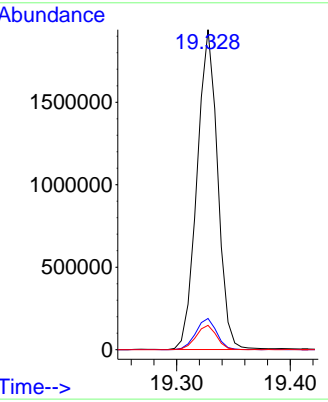
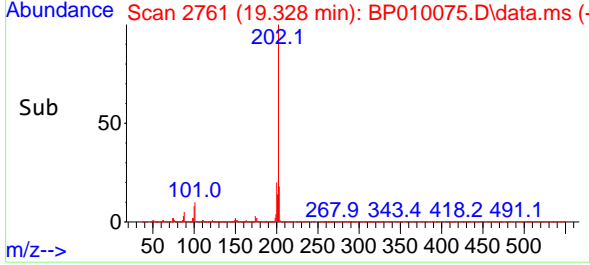
#80
 Fluoranthene
 Concen: 37.876 ng/u1
 RT: 19.328 min Scan# 21
 Delta R.T. 0.001 min
 Lab File: BP010075.D
 Acq: 23 Apr 2022 02:43

Instrument : BNA_P
 ClientSampleId : SLCS305

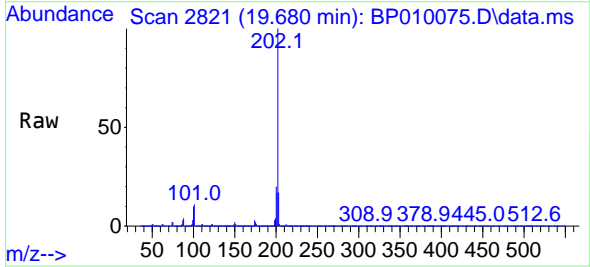


Tgt Ion:202 Resp: 244504
 Ion Ratio Lower Upper
 202 100
 101 9.7 9.6 14.4
 100 7.6 6.3 9.5

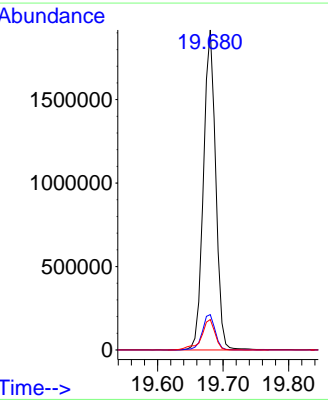
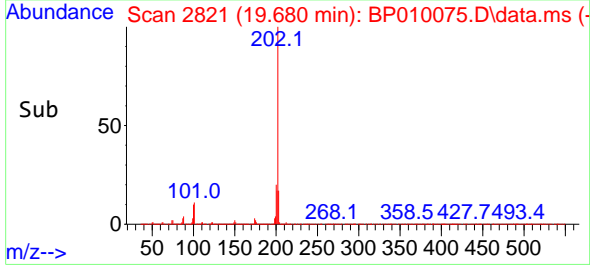
Manual Integrations
APPROVED
 Reviewed By :Jagrut Upadhyay 04/25/2022
 Supervised By :mohammad ahmed 04/26/2022

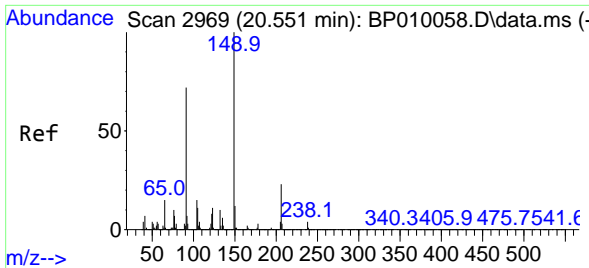


#82
 Pyrene
 Concen: 37.289 ng/u1
 RT: 19.680 min Scan# 2821
 Delta R.T. 0.000 min
 Lab File: BP010075.D
 Acq: 23 Apr 2022 02:43



Tgt Ion:202 Resp: 2479998
 Ion Ratio Lower Upper
 202 100
 101 11.0 10.6 15.8
 100 9.5 9.8 14.6#





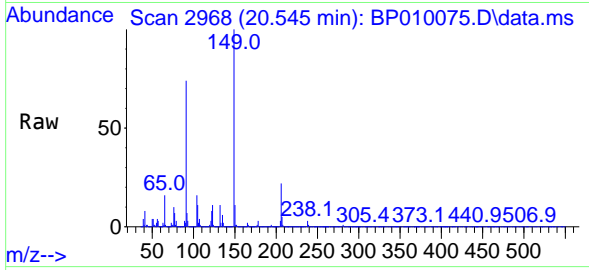
#83
 Butylbenzylphthalate
 Concen: 38.095 ng/u1
 RT: 20.545 min Scan# 2099
 Delta R.T. -0.006 min
 Lab File: BP010075.D
 Acq: 23 Apr 2022 02:43

Instrument :

BNA_P

ClientSampleId :

SLCS305

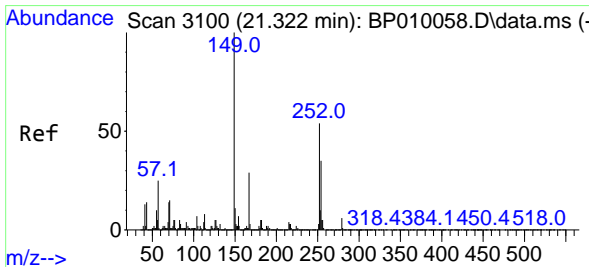
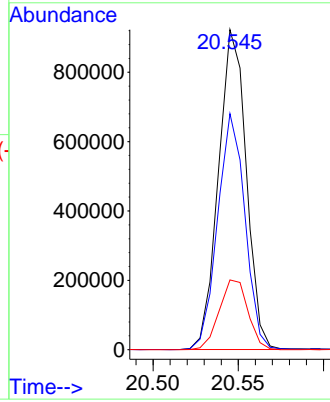
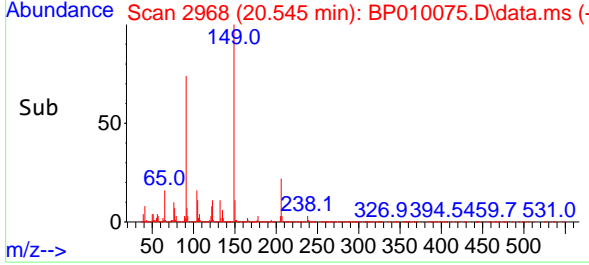


Tgt Ion:149 Resp: 1047310
 Ion Ratio Lower Upper
 149 100
 91 73.7 71.1 106.7
 206 21.8 28.8 43.2

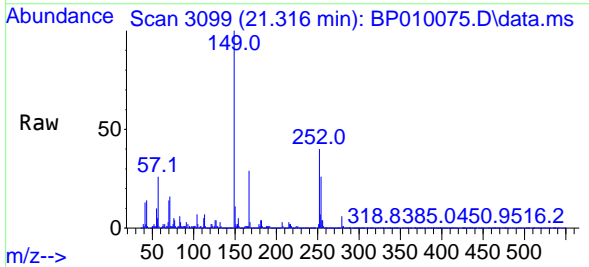
Manual Integrations

APPROVED

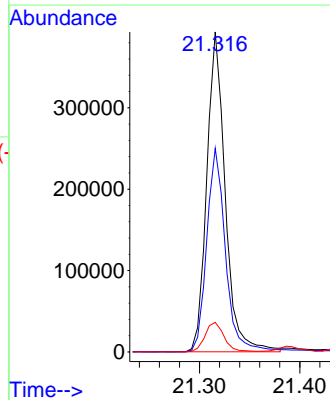
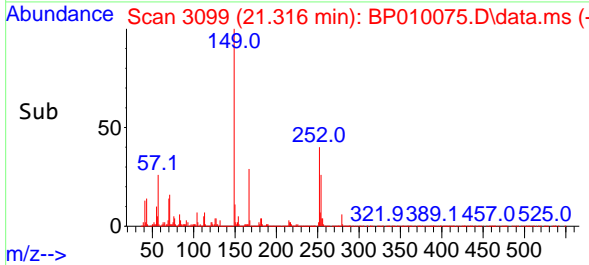
Reviewed By :Jagrut Upadhyay 04/25/2022
 Supervised By :mohammad ahmed 04/26/2022

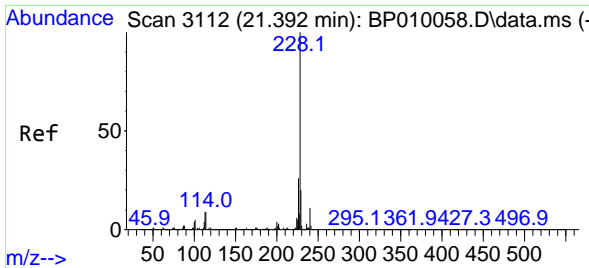


#84
 3,3'-Dichlorobenzidine
 Concen: 27.799 ng/u1
 RT: 21.316 min Scan# 3099
 Delta R.T. -0.006 min
 Lab File: BP010075.D
 Acq: 23 Apr 2022 02:43



Tgt Ion:252 Resp: 503375
 Ion Ratio Lower Upper
 252 100
 254 63.6 49.8 74.6
 126 9.3 4.3 6.5





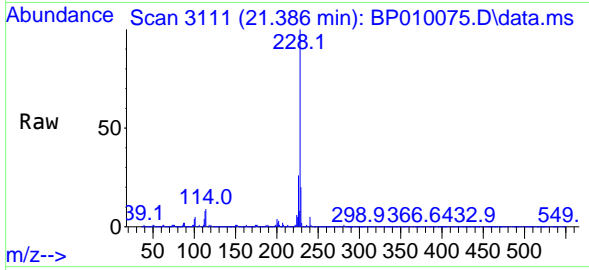
#85
 Benzo(a)anthracene
 Concen: 33.996 ng/uI
 RT: 21.386 min Scan# 3112
 Delta R.T. -0.006 min
 Lab File: BP010075.D
 Acq: 23 Apr 2022 02:43

Instrument :

BNA_P

ClientSampleId :

SLCS305



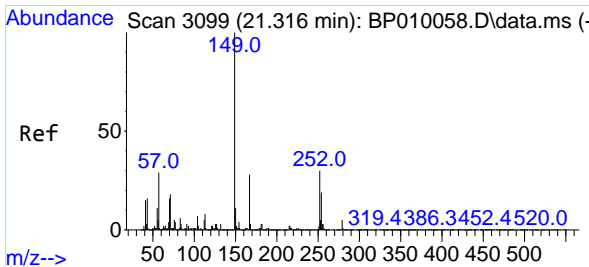
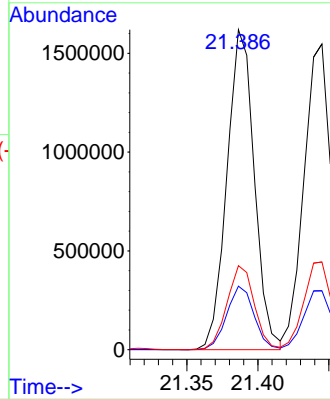
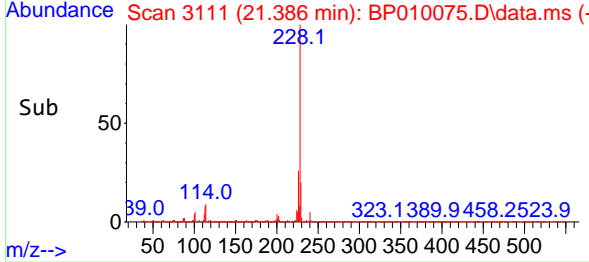
Tgt Ion:228 Resp: 217121

Ion	Ratio	Lower	Upper
228	100		
229	19.9	18.2	27.2
226	26.2	22.8	34.2

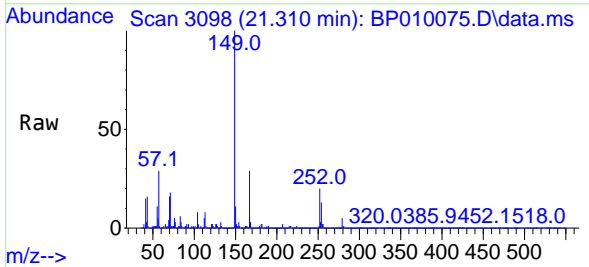
Manual Integrations

APPROVED

Reviewed By :Jagrut Upadhyay 04/25/2022
 Supervised By :mohammad ahmed 04/26/2022

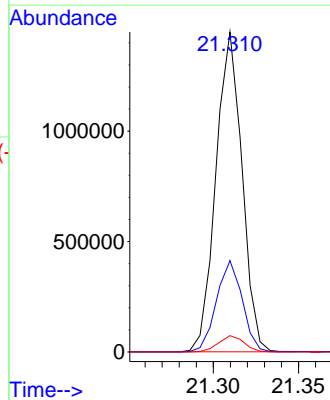
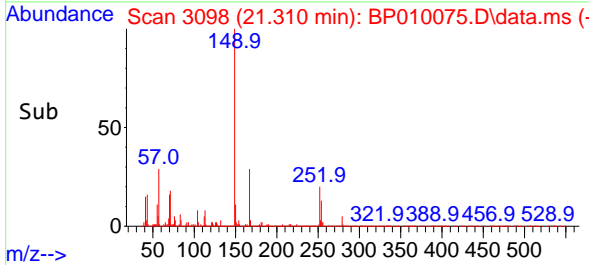


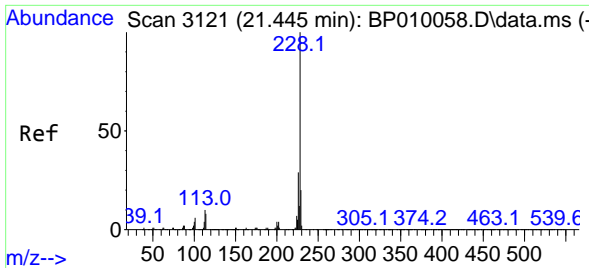
#86
 Bis(2-ethylhexyl)phthalate
 Concen: 37.806 ng/uI
 RT: 21.310 min Scan# 3098
 Delta R.T. -0.006 min
 Lab File: BP010075.D
 Acq: 23 Apr 2022 02:43



Tgt Ion:149 Resp: 1540447

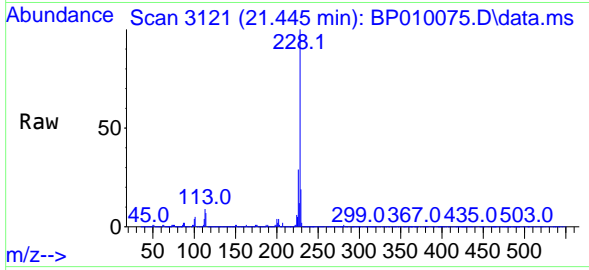
Ion	Ratio	Lower	Upper
149	100		
167	28.6	32.8	49.2#
279	5.1	5.6	8.4#





#87
 Chrysene
 Concen: 33.505 ng/u1
 RT: 21.445 min Scan# 31
 Delta R.T. 0.000 min
 Lab File: BP010075.D
 Acq: 23 Apr 2022 02:43

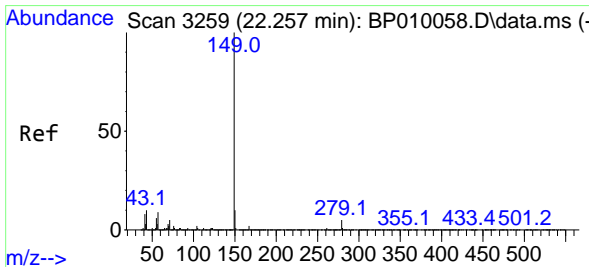
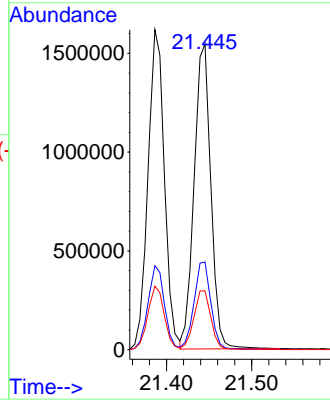
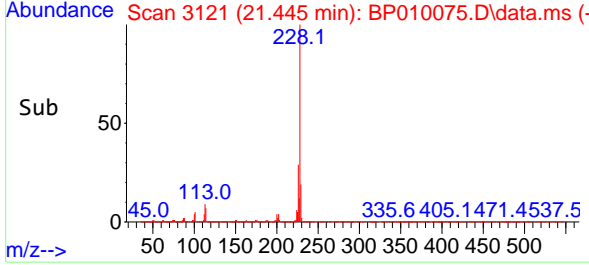
Instrument : BNA_P
 ClientSampleId : SLCS305



Tgt Ion:228 Resp: 2106998
 Ion Ratio Lower Upper
 228 100
 226 28.7 22.7 34.1
 229 19.2 15.2 22.8

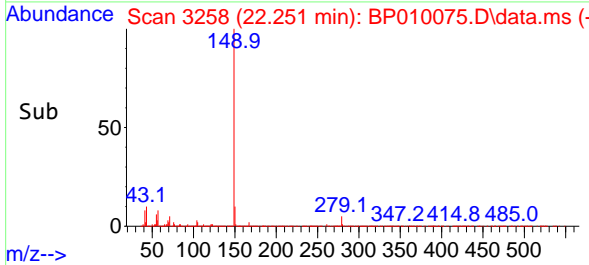
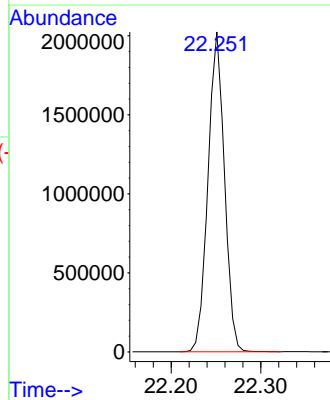
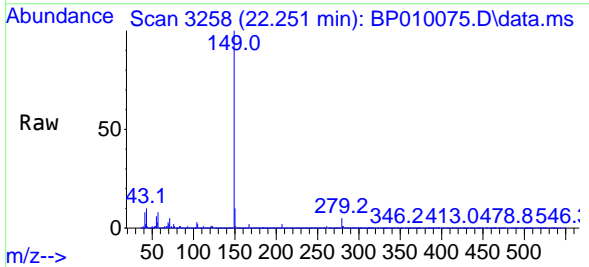
Manual Integrations
 APPROVED

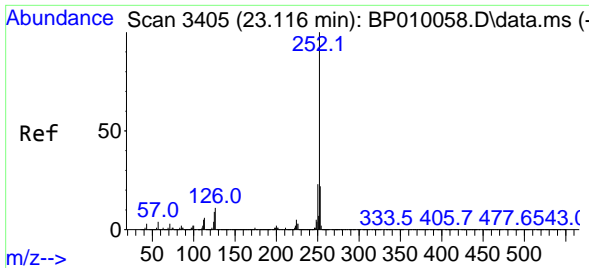
Reviewed By :Jagrut Upadhyay 04/25/2022
 Supervised By :mohammad ahmed 04/26/2022



#89
 Di-n-octyl phthalate
 Concen: 39.085 ng/u1
 RT: 22.251 min Scan# 3258
 Delta R.T. -0.006 min
 Lab File: BP010075.D
 Acq: 23 Apr 2022 02:43

Tgt Ion:149 Resp: 2576407





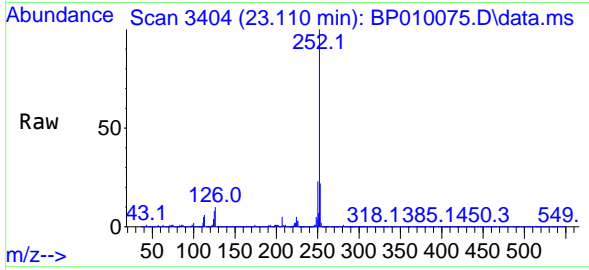
#90
 Benzo(b)fluoranthene
 Concen: 34.747 ng/u1
 RT: 23.110 min Scan# 3404
 Delta R.T. 0.000 min
 Lab File: BP010075.D
 Acq: 23 Apr 2022 02:43

Instrument :

BNA_P

ClientSampleId :

SLCS305

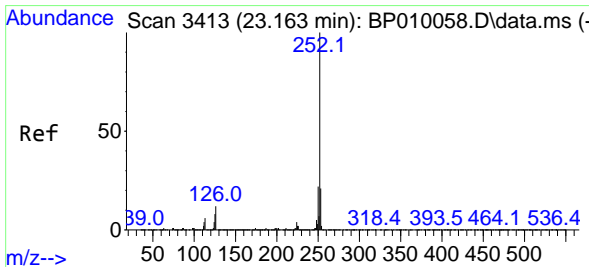
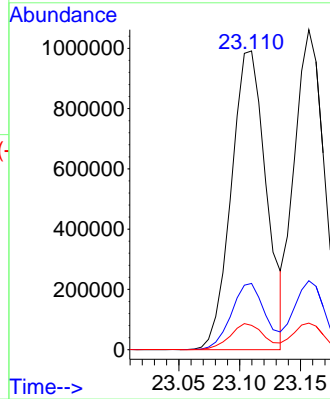
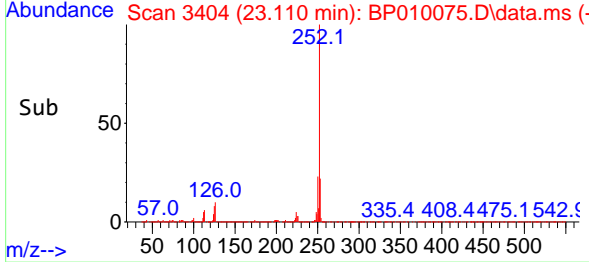


Tgt Ion:252 Resp: 1980680
 Ion Ratio Lower Upper
 252 100
 253 22.2 17.4 26.0
 125 8.2 7.3 10.9

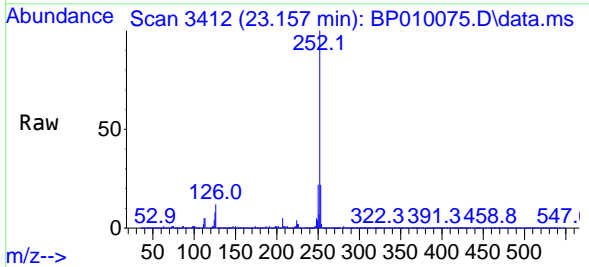
Manual Integrations

APPROVED

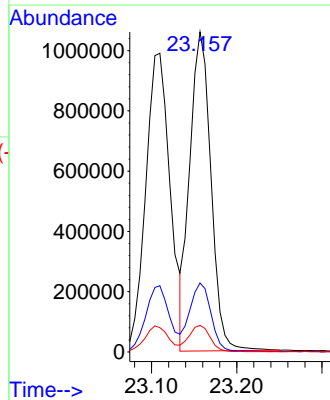
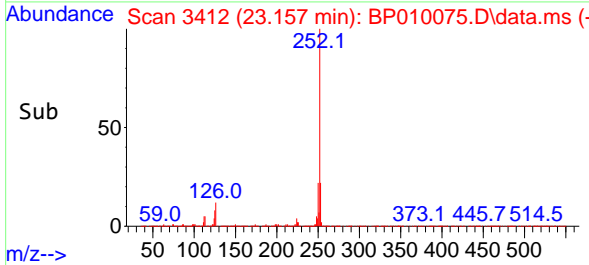
Reviewed By :Jagrut Upadhyay 04/25/2022
 Supervised By :mohammad ahmed 04/26/2022

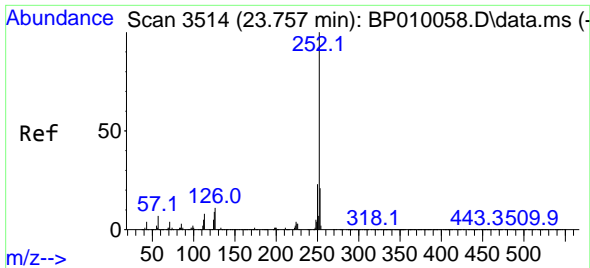


#91
 Benzo(k)fluoranthene
 Concen: 33.846 ng/u1
 RT: 23.157 min Scan# 3412
 Delta R.T. 0.000 min
 Lab File: BP010075.D
 Acq: 23 Apr 2022 02:43



Tgt Ion:252 Resp: 1827543
 Ion Ratio Lower Upper
 252 100
 253 21.5 17.9 26.9
 125 8.3 5.1 7.7#





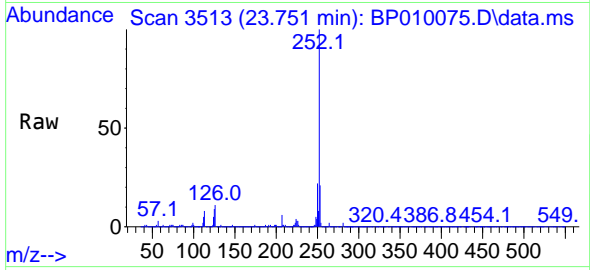
#93
 Benzo(a)pyrene
 Concen: 34.012 ng/u1
 RT: 23.751 min Scan# 31
 Delta R.T. 0.000 min
 Lab File: BP010075.D
 Acq: 23 Apr 2022 02:43

Instrument :

BNA_P

ClientSampleId :

SLCS305

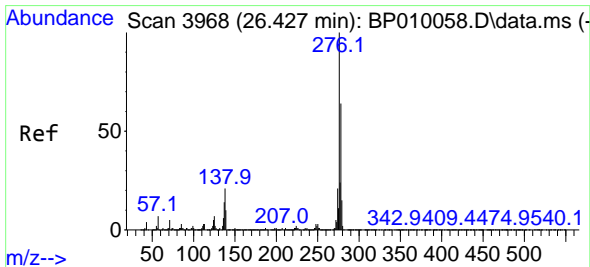
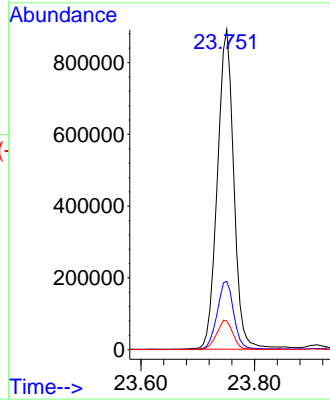
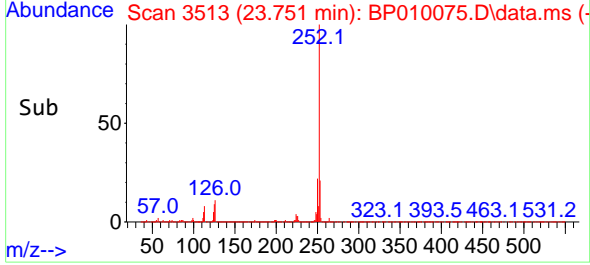


Tgt Ion:252 Resp: 1792890
 Ion Ratio Lower Upper
 252 100
 253 21.4 17.5 26.3
 125 8.9 6.4 9.6

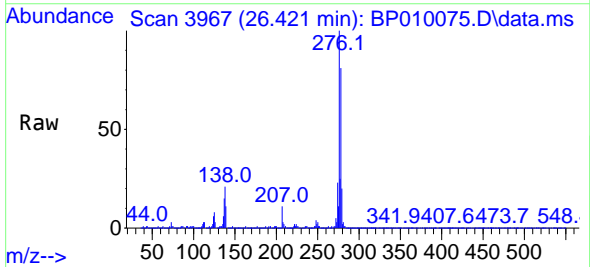
Manual Integrations

APPROVED

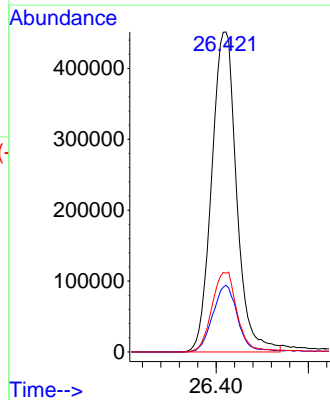
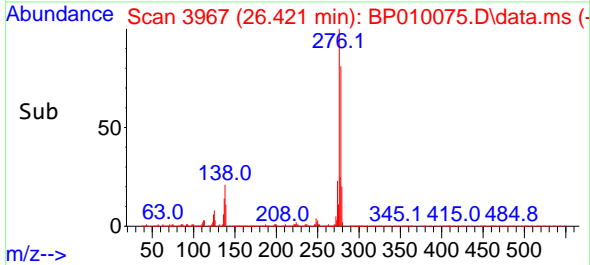
Reviewed By :Jagrut Upadhyay 04/25/2022
 Supervised By :mohammad ahmed 04/26/2022

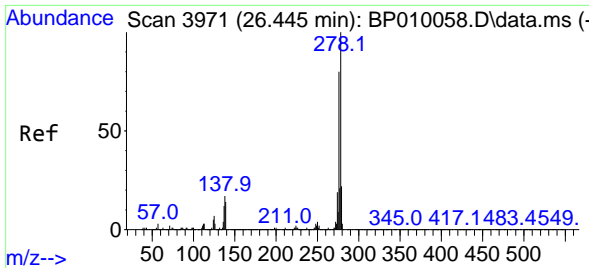


#94
 Indeno(1,2,3-cd)pyrene
 Concen: 32.250 ng/u1
 RT: 26.421 min Scan# 3967
 Delta R.T. -0.006 min
 Lab File: BP010075.D
 Acq: 23 Apr 2022 02:43



Tgt Ion:276 Resp: 1691136
 Ion Ratio Lower Upper
 276 100
 138 20.8 12.3 18.5#
 277 24.6 19.3 28.9





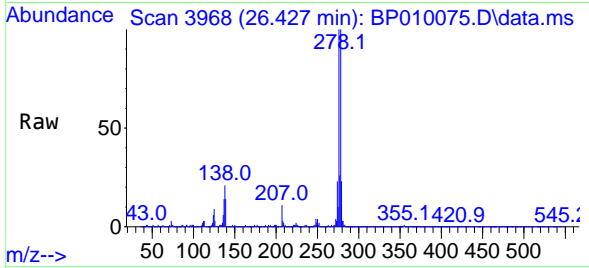
#95
 Dibenzo(a,h)anthracene
 Concen: 30.983 ng/ul
 RT: 26.427 min Scan# 3968
 Delta R.T. -0.012 min
 Lab File: BP010075.D
 Acq: 23 Apr 2022 02:43

Instrument :

BNA_P

ClientSampleId :

SLCS305

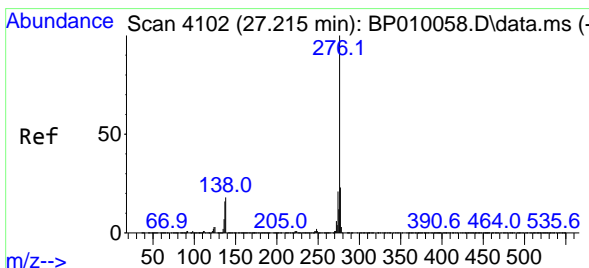
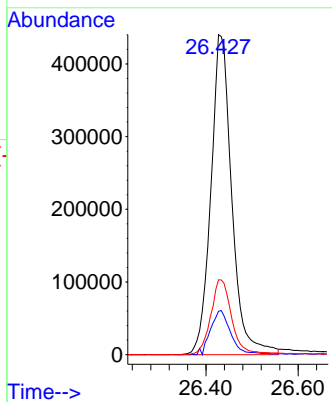
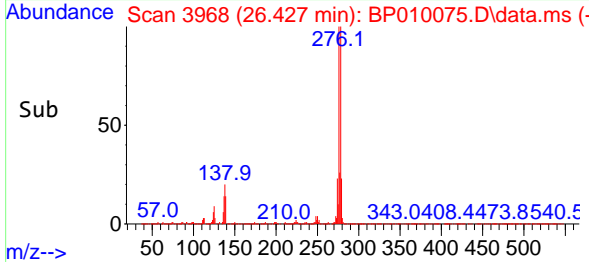


Tgt Ion:278 Resp: 1390220
 Ion Ratio Lower Upper
 278 100
 139 13.6 6.6 10.0
 279 23.4 18.4 27.6

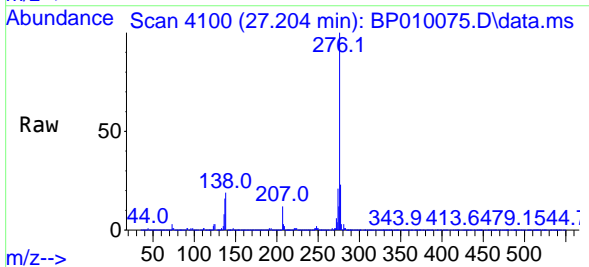
Manual Integrations

APPROVED

Reviewed By :Jagrut Upadhyay 04/25/2022
 Supervised By :mohammad ahmed 04/26/2022



#96
 Benzo(g,h,i)perylene
 Concen: 33.530 ng/ul
 RT: 27.204 min Scan# 4100
 Delta R.T. -0.006 min
 Lab File: BP010075.D
 Acq: 23 Apr 2022 02:43



Tgt Ion:276 Resp: 1483600
 Ion Ratio Lower Upper
 276 100
 138 18.7 11.6 17.4
 277 23.2 15.9 23.9

