

Data Path : Z:\svoasrv\HPCHEM1\BNA\_P\Data\BP042825\  
 Data File : BP024448.D  
 Acq On : 28 Apr 2025 22:28  
 Operator : RC/JU  
 Sample : Q1891-01  
 Misc :  
 ALS Vial : 15 Sample Multiplier: 1

Instrument :  
 BNA\_P  
 ClientSampleId :  
 MH-C

Integration Parameters: rteint.p  
 Integrator: RTE  
 Smoothing : ON Filtering: 5  
 Sampling : 1 Min Area: 3 % of largest Peak  
 Start Thrs: 0.2 Max Peaks: 100  
 Stop Thrs : 0 Peak Location: TOP

If leading or trailing edge < 100 prefer < Baseline drop else tangent >  
 Peak separation: 5

Method : Z:\svoasrv\HPCHEM1\BNA\_P\Methods\8270E-BP041425.M  
 Title : ASP BNA STANDARDS FOR 5 POINT CALIBRATION

Signal : TIC: BP024448.D\data.ms

peak #	R.T. min	first scan	max scan	last scan	PK TY	peak height	corr. area	corr. % max.	% of total
1	4.881	299	305	313	rBV	145008	210304	3.04%	0.354%
2	5.334	375	382	395	rBV	1665660	2474578	35.83%	4.163%
3	6.899	641	648	676	rBV	1667979	2692493	38.98%	4.529%
4	7.716	778	787	794	rBV	557975	872757	12.64%	1.468%
5	8.857	973	981	992	rBV	1035985	1746190	25.28%	2.937%
6	10.487	1250	1258	1264	rBV	778044	1257331	18.20%	2.115%
7	12.951	1669	1677	1689	rBV	3010333	4355352	63.06%	7.326%
8	13.498	1762	1770	1778	rBV2	29852	81790	1.18%	0.138%
9	13.657	1791	1797	1802	rBV	59959	97469	1.41%	0.164%
10	14.063	1858	1866	1881	rBV	117056	199193	2.88%	0.335%
11	14.340	1904	1913	1920	rBV	1233419	1765168	25.56%	2.969%
12	14.410	1920	1925	1932	rVB	41654	72495	1.05%	0.122%
13	14.745	1974	1982	1990	rBV3	45361	84619	1.23%	0.142%
14	14.963	2011	2019	2025	rBV3	41421	90819	1.31%	0.153%
15	15.404	2089	2094	2106	rVB2	89659	167615	2.43%	0.282%
16	15.722	2140	2148	2156	rVB	458573	632517	9.16%	1.064%
17	15.857	2162	2171	2180	rBV	2992562	4122152	59.68%	6.934%
18	16.092	2206	2211	2224	rVB3	73234	149522	2.16%	0.252%
19	16.428	2261	2268	2272	rBV2	45525	97697	1.41%	0.164%
20	16.957	2354	2358	2367	rVB	88843	143616	2.08%	0.242%
21	17.139	2383	2389	2393	rBV	1395310	2105047	30.48%	3.541%
22	17.181	2393	2396	2403	rVB	596839	789679	11.43%	1.328%
23	17.281	2408	2413	2418	rVV	212689	313465	4.54%	0.527%
24	17.345	2418	2424	2428	rVV3	41150	85264	1.23%	0.143%
25	17.557	2455	2460	2470	rBV7	49658	163876	2.37%	0.276%
26	17.669	2475	2479	2484	rVV2	64320	109929	1.59%	0.185%
27	17.739	2487	2491	2499	rVB	95535	144645	2.09%	0.243%
28	17.892	2511	2517	2522	rVB	66353	118673	1.72%	0.200%
29	18.039	2537	2542	2545	rBV	231413	325079	4.71%	0.547%
30	18.086	2545	2550	2558	rVV2	439303	957146	13.86%	1.610%
31	18.175	2561	2565	2570	rVV	124803	189776	2.75%	0.319%
32	18.245	2571	2577	2581	rVV2	356275	708899	10.26%	1.192%
33	18.281	2581	2583	2592	rVB	186822	261580	3.79%	0.440%
34	18.457	2609	2613	2617	rVB2	67114	86278	1.25%	0.145%
35	18.522	2620	2624	2627	rVV3	126276	161829	2.34%	0.272%
36	18.563	2627	2631	2635	rVV2	143584	232293	3.36%	0.391%

Data Path : Z:\svoasrv\HPCHEM1\BNA\_P\Data\BP042825\  
 Data File : BP024448.D  
 Acq On : 28 Apr 2025 22:28  
 Operator : RC/JU  
 Sample : Q1891-01  
 Misc :  
 ALS Vial : 15 Sample Multiplier: 1

Instrument :  
 BNA\_P  
 ClientSampleId :  
 MH-C

Integration Parameters: rteint.p  
 Integrator: RTE  
 Smoothing : ON  
 Sampling : 1  
 Start Thrs : 0.2  
 Stop Thrs : 0  
 Filtering: 5  
 Min Area: 3 % of largest Peak  
 Max Peaks: 100  
 Peak Location: TOP

If leading or trailing edge < 100 prefer < Baseline drop else tangent >  
 Peak separation: 5

Method : Z:\svoasrv\HPCHEM1\BNA\_P\Methods\8270E-BP041425.M  
 Title : ASP BNA STANDARDS FOR 5 POINT CALIBRATION

37	18.616	2635	2640	2649	rVB3	82685	201342	2.92%	0.339%
38	18.816	2672	2674	2679	rVV	89376	125067	1.81%	0.210%
39	18.875	2680	2684	2687	rVV	139985	192200	2.78%	0.323%
40	18.910	2687	2690	2694	rVB2	105947	151549	2.19%	0.255%
41	18.998	2699	2705	2709	rBV	303308	528200	7.65%	0.889%
42	19.063	2709	2716	2719	rBV4	141258	268927	3.89%	0.452%
43	19.145	2724	2730	2737	rBV3	182502	407883	5.91%	0.686%
44	19.269	2745	2751	2756	rBV	1242501	1786172	25.86%	3.005%
45	19.333	2756	2762	2767	rVV2	287601	552094	7.99%	0.929%
46	19.410	2772	2775	2783	rVB3	161875	305436	4.42%	0.514%
47	19.522	2790	2794	2798	rBV2	122886	170259	2.47%	0.286%
48	19.639	2805	2814	2824	rBV	1663625	2927725	42.39%	4.925%
49	19.733	2825	2830	2835	rVB2	181812	299827	4.34%	0.504%
50	19.863	2847	2852	2857	rBV	5812001	6906841	100.00%	11.618%
51	19.986	2868	2873	2875	rBV4	221300	347917	5.04%	0.585%
52	20.080	2885	2889	2892	rBV4	75338	106504	1.54%	0.179%
53	20.163	2893	2903	2907	rVB2	380657	833954	12.07%	1.403%
54	20.269	2917	2921	2925	rVB	226073	278323	4.03%	0.468%
55	20.327	2926	2931	2937	rBV	459651	637178	9.23%	1.072%
56	20.475	2952	2956	2960	rBV2	338474	393537	5.70%	0.662%
57	20.522	2960	2964	2968	rVB	333488	416367	6.03%	0.700%
58	20.598	2974	2977	2981	rVB2	240138	249548	3.61%	0.420%
59	21.151	3068	3071	3075	rVB2	193989	234928	3.40%	0.395%
60	21.192	3075	3078	3081	rVB	152237	177927	2.58%	0.299%
61	21.251	3082	3088	3096	rBV5	269352	726075	10.51%	1.221%
62	21.586	3136	3145	3149	rBV2	1911045	4017515	58.17%	6.758%
63	21.627	3149	3152	3164	rVB	639868	1127657	16.33%	1.897%
64	23.868	3527	3533	3541	rBV	574918	1562824	22.63%	2.629%
65	24.615	3654	3660	3676	rVB	393854	1085396	15.71%	1.826%
66	24.768	3678	3686	3700	rVB	620254	1667229	24.14%	2.805%
67	24.927	3704	3713	3721	rBV	985107	2694403	39.01%	4.532%

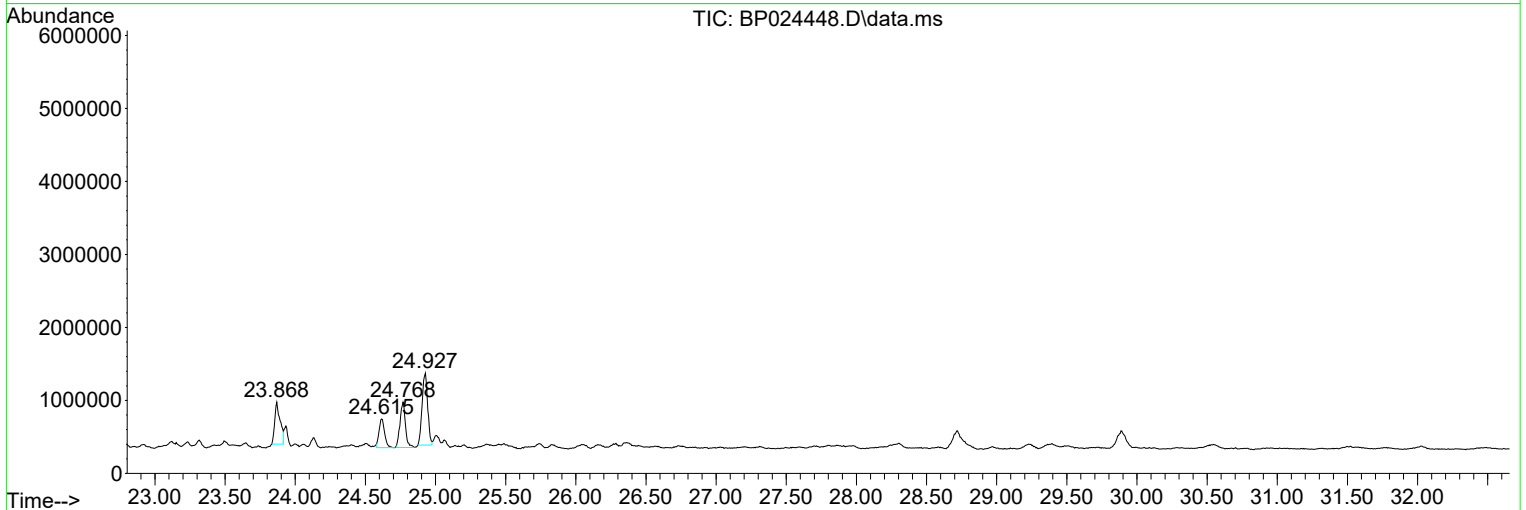
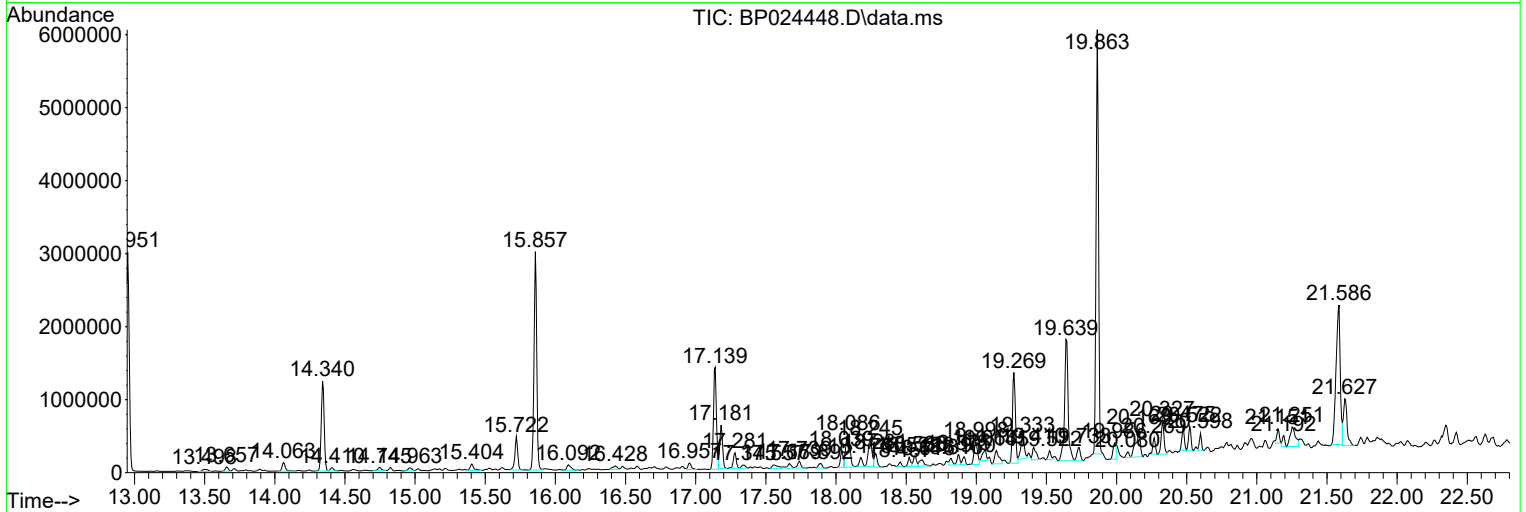
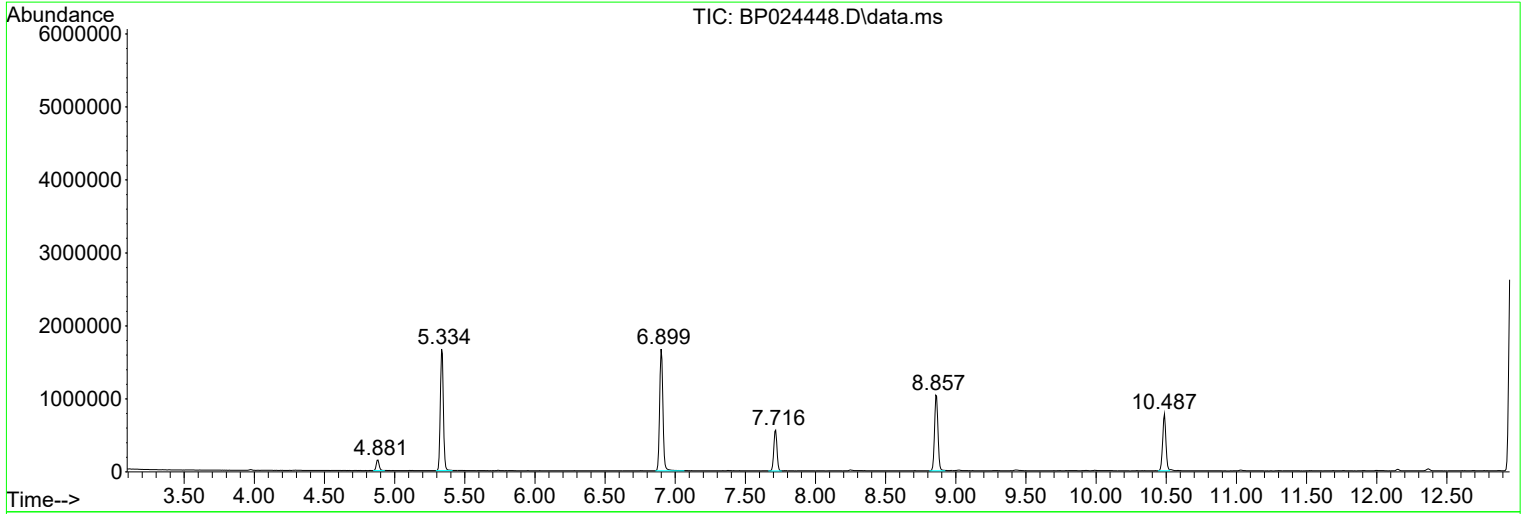
Sum of corrected areas: 59447939

Data Path : Z:\svoasrv\HPCHEM1\BNA\_P\Data\BP042825\  
 Data File : BP024448.D  
 Acq On : 28 Apr 2025 22:28  
 Operator : RC/JU  
 Sample : Q1891-01  
 Misc :  
 ALS Vial : 15 Sample Multiplier: 1

Instrument :  
 BNA\_P  
 ClientSampleId :  
 MH-C

Quant Method : Z:\svoasrv\HPCHEM1\BNA\_P\Methods\8270E-BP041425.M  
 Quant Title : ASP BNA STANDARDS FOR 5 POINT CALIBRATION

TIC Library : C:\Database\NIST20.L  
 TIC Integration Parameters: LSCINT.P



Data Path : Z:\svoasrv\HPCHEM1\BNA\_P\Data\BP042825\  
 Data File : BP024448.D  
 Acq On : 28 Apr 2025 22:28  
 Operator : RC/JU  
 Sample : Q1891-01  
 Misc :  
 ALS Vial : 15 Sample Multiplier: 1

Instrument :  
 BNA\_P  
 ClientSampleId :  
 MH-C

Quant Method : Z:\svoasrv\HPCHEM1\BNA\_P\Methods\8270E-BP041425.M  
 Quant Title : ASP BNA STANDARDS FOR 5 POINT CALIBRATION

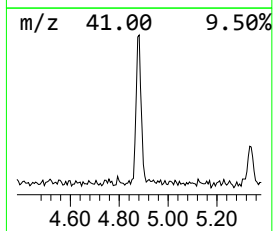
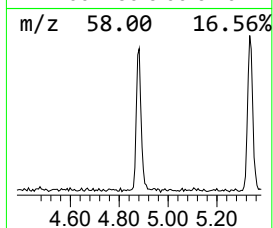
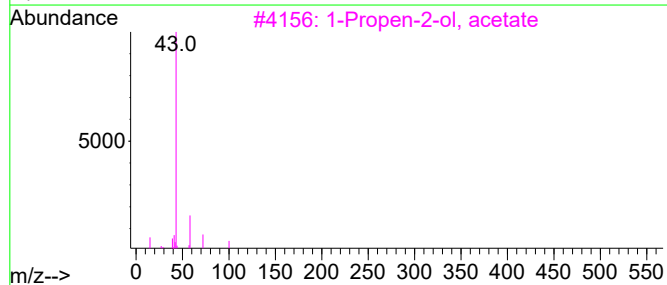
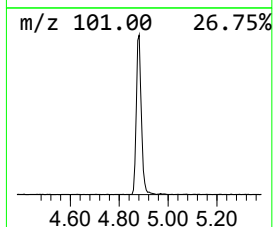
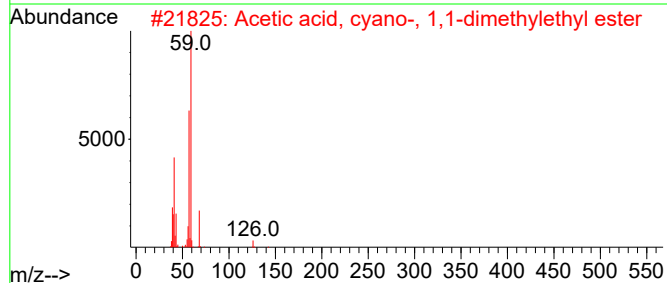
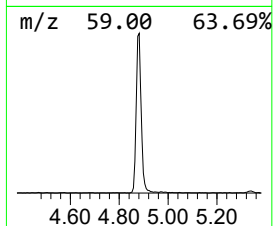
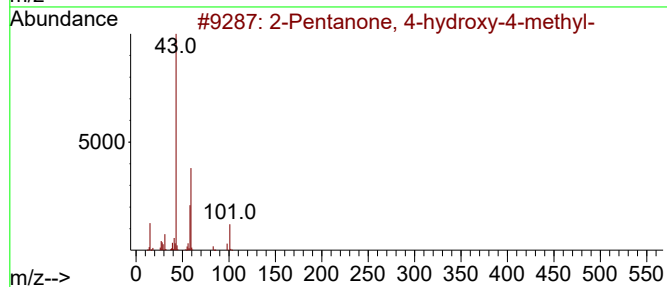
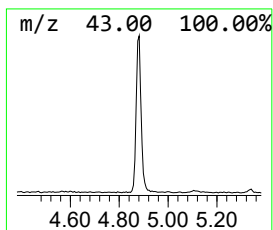
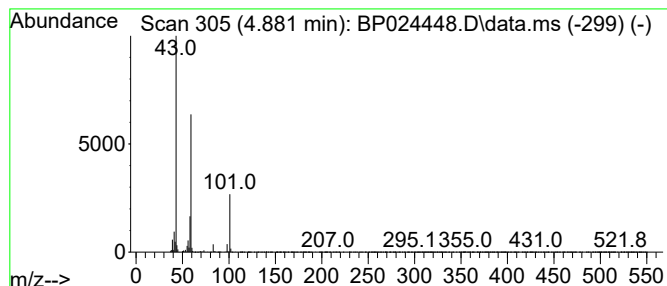
TIC Library : C:\Database\NIST20.L  
 TIC Integration Parameters: LSCINT.P

\*\*\*\*\*  
 Peak Number 1 2-Pentanone, 4-hydroxy-4-me... Concentration Rank 7

R.T.	EstConc	Area	Relative to ISTD	R.T.
4.881	4.82 ng	210304	1,4-Dichlorobenzene-d4	7.716

Hit#	of 5	Tentative ID	MW	MolForm	CAS#	Qual
1		2-Pentanone, 4-hydroxy-4-methyl-	116	C6H12O2	000123-42-2	56
2		Acetic acid, cyano-, 1,1-dimethy...	141	C7H11NO2	001116-98-9	17
3		1-Propen-2-ol, acetate	100	C5H8O2	000108-22-5	10
4		(+)-4-Amino-4,5-dihydro-2(3H)-f...	101	C4H7NO2	016504-58-8	9
5		Propanamide, N-ethyl-	101	C5H11NO	005129-72-6	9



Data Path : Z:\svoasrv\HPCHEM1\BNA\_P\Data\BP042825\  
 Data File : BP024448.D  
 Acq On : 28 Apr 2025 22:28  
 Operator : RC/JU  
 Sample : Q1891-01  
 Misc :  
 ALS Vial : 15 Sample Multiplier: 1

Instrument :  
 BNA\_P  
 ClientSampleId :  
 MH-C

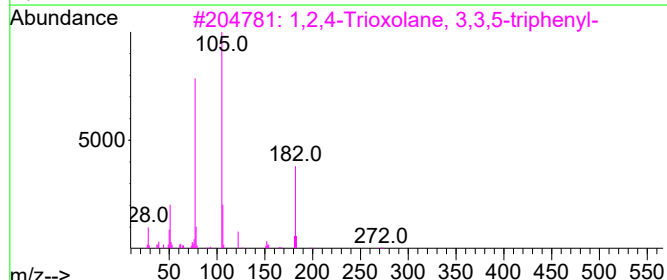
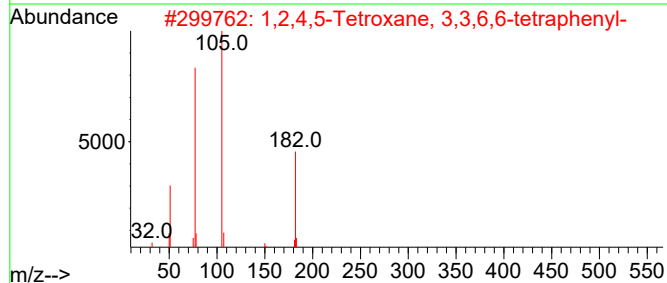
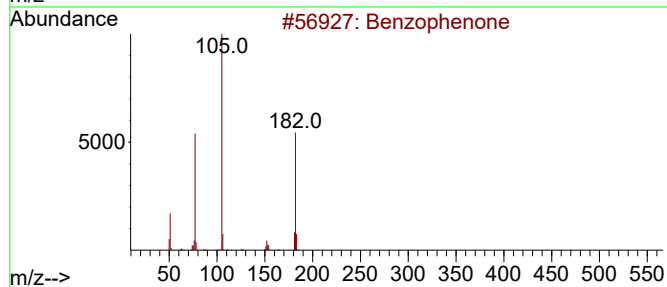
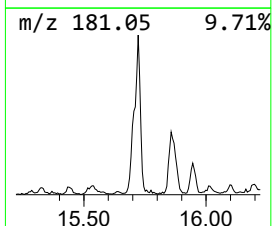
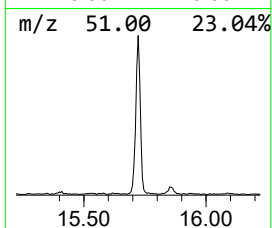
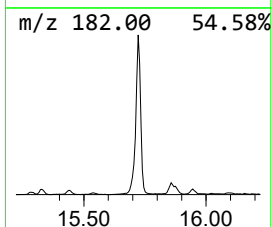
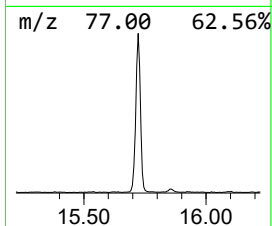
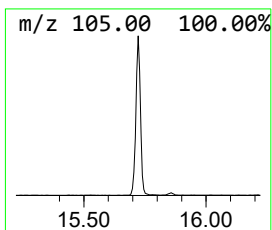
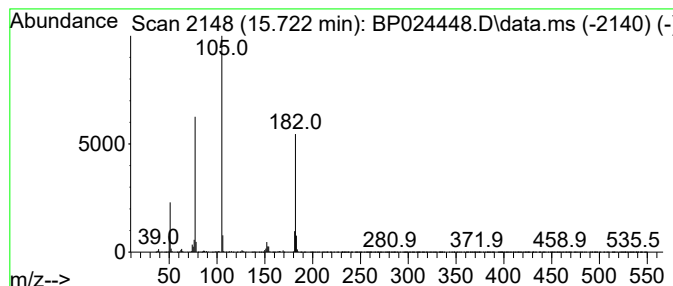
Quant Method : Z:\svoasrv\HPCHEM1\BNA\_P\Methods\8270E-BP041425.M  
 Quant Title : ASP BNA STANDARDS FOR 5 POINT CALIBRATION

TIC Library : C:\Database\NIST20.L  
 TIC Integration Parameters: LSCINT.P

\*\*\*\*\*  
 Peak Number 2 Benzophenone Concentration Rank 3

R.T.	EstConc	Area	Relative to ISTD	R.T.
15.722	7.17 ng	632517	Acenaphthene-d10	14.339

Hit#	of	5	Tentative ID	MW	MolForm	CAS#	Qual
1			Benzophenone	182	C13H10O	000119-61-9	96
2			1,2,4,5-Tetroxane, 3,3,6,6-tetra...	396	C26H20O4	016204-36-7	64
3			1,2,4-Trioxolane, 3,3,5-triphenyl-	304	C20H16O3	023246-12-0	50
4			Methanone, phenyl-2-pyridinyl-	183	C12H9NO	000091-02-1	45
5			Benzenamine, N-(3-pyridinylmethyl-...)	182	C12H10N2	029722-97-2	42



Data Path : Z:\svoasrv\HPCHEM1\BNA\_P\Data\BP042825\  
 Data File : BP024448.D  
 Acq On : 28 Apr 2025 22:28  
 Operator : RC/JU  
 Sample : Q1891-01  
 Misc :  
 ALS Vial : 15 Sample Multiplier: 1

Instrument :  
 BNA\_P  
 ClientSampleId :  
 MH-C

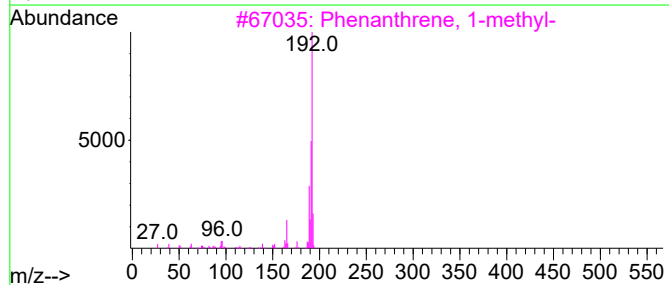
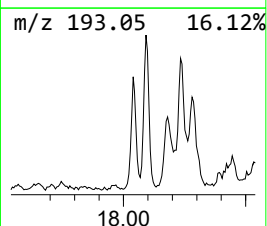
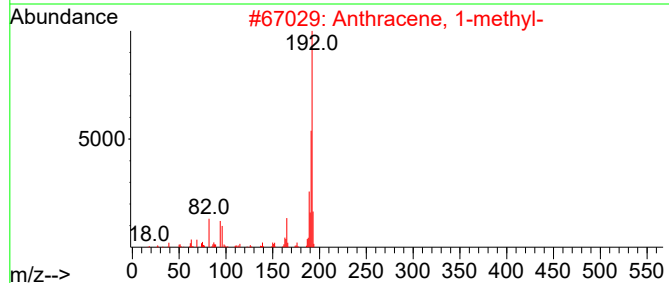
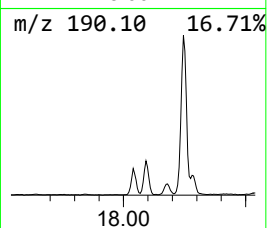
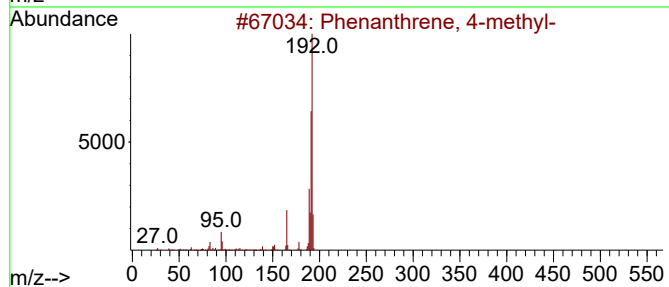
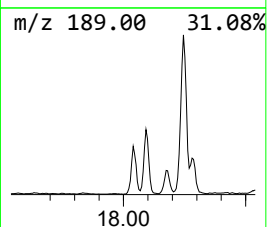
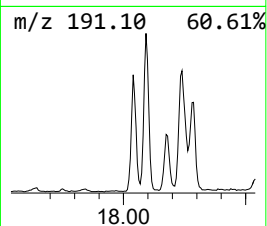
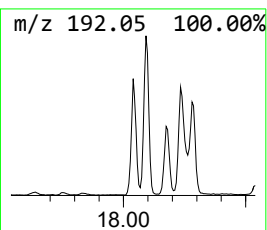
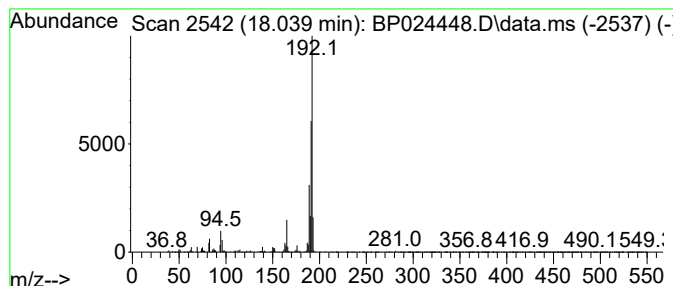
Quant Method : Z:\svoasrv\HPCHEM1\BNA\_P\Methods\8270E-BP041425.M  
 Quant Title : ASP BNA STANDARDS FOR 5 POINT CALIBRATION

TIC Library : C:\Database\NIST20.L  
 TIC Integration Parameters: LSCINT.P

\*\*\*\*\*  
 Peak Number 3 Phenanthrene, 4-methyl- Concentration Rank 12

R.T.	EstConc	Area	Relative to ISTD	R.T.
18.039	3.09 ng	325079	Phenanthrene-d10	17.139

Hit#	of	5	Tentative ID	MW	MolForm	CAS#	Qual
1			Phenanthrene, 4-methyl-	192	C15H12	000832-64-4	94
2			Anthracene, 1-methyl-	192	C15H12	000610-48-0	93
3			Phenanthrene, 1-methyl-	192	C15H12	000832-69-9	93
4			Anthracene, 2-methyl-	192	C15H12	000613-12-7	92
5			1H-Cyclopropa[1]phenanthrene,1a,...	192	C15H12	000949-41-7	91



Data Path : Z:\svoasrv\HPCHEM1\BNA\_P\Data\BP042825\  
 Data File : BP024448.D  
 Acq On : 28 Apr 2025 22:28  
 Operator : RC/JU  
 Sample : Q1891-01  
 Misc :  
 ALS Vial : 15 Sample Multiplier: 1

Instrument :  
 BNA\_P  
 ClientSampleId :  
 MH-C

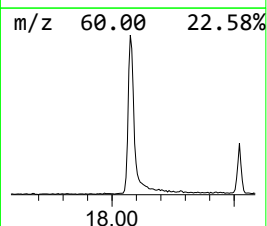
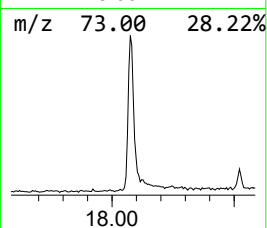
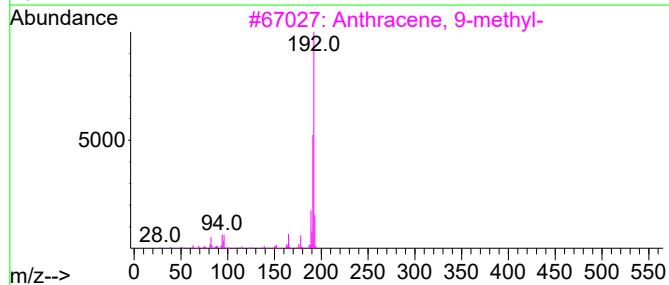
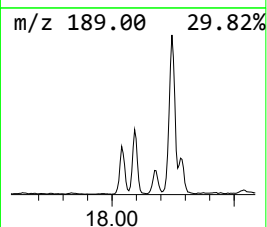
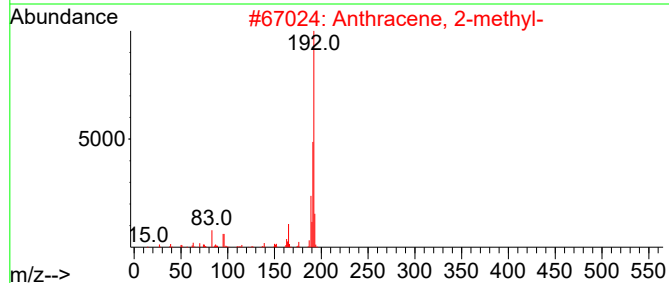
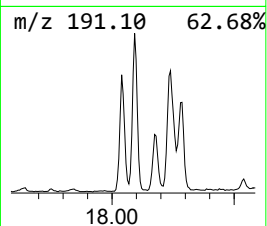
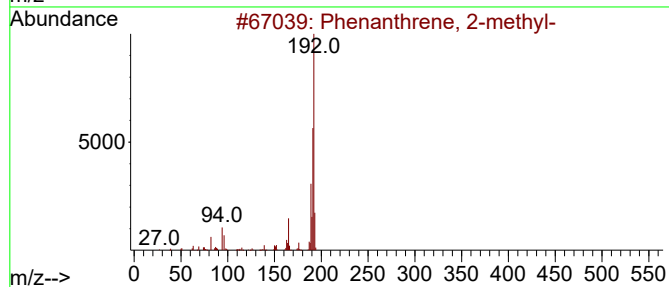
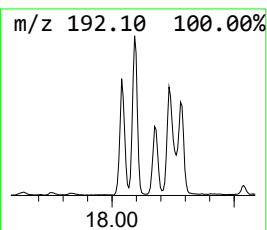
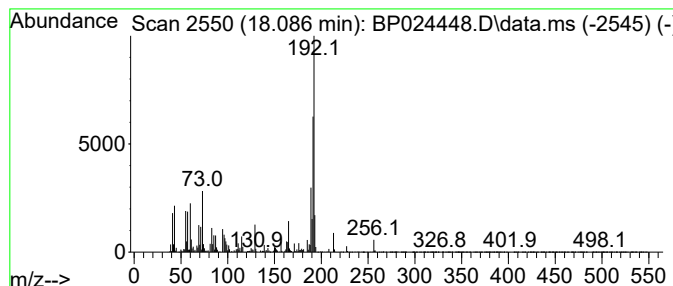
Quant Method : Z:\svoasrv\HPCHEM1\BNA\_P\Methods\8270E-BP041425.M  
 Quant Title : ASP BNA STANDARDS FOR 5 POINT CALIBRATION

TIC Library : C:\Database\NIST20.L  
 TIC Integration Parameters: LSCINT.P

\*\*\*\*\*  
 Peak Number 4 Phenanthrene, 2-methyl- Concentration Rank 1

R.T.	EstConc	Area	Relative to ISTD	R.T.
18.086	9.09 ng	957146	Phenanthrene-d10	17.139

Hit#	of	5	Tentative ID	MW	MolForm	CAS#	Qual
1			Phenanthrene, 2-methyl-	192	C15H12	002531-84-2	96
2			Anthracene, 2-methyl-	192	C15H12	000613-12-7	96
3			Anthracene, 9-methyl-	192	C15H12	000779-02-2	92
4			Phenanthrene, 4-methyl-	192	C15H12	000832-64-4	86
5			Naphtho[2,3-b]norbornadiene	192	C15H12	107426-38-0	83



Data Path : Z:\svoasrv\HPCHEM1\BNA\_P\Data\BP042825\  
 Data File : BP024448.D  
 Acq On : 28 Apr 2025 22:28  
 Operator : RC/JU  
 Sample : Q1891-01  
 Misc :  
 ALS Vial : 15 Sample Multiplier: 1

Instrument :  
 BNA\_P  
 ClientSampleId :  
 MH-C

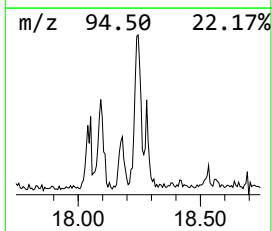
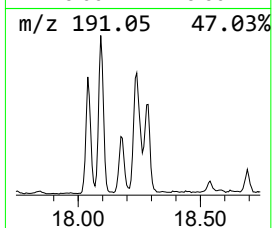
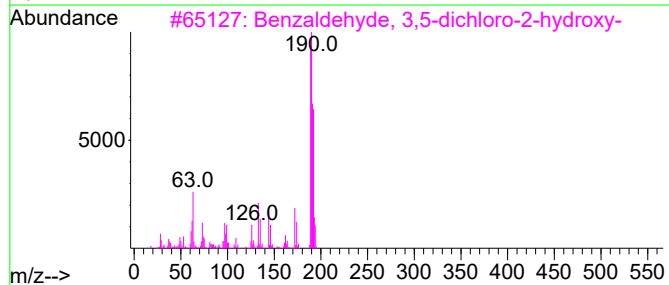
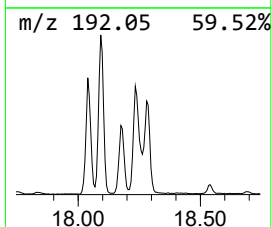
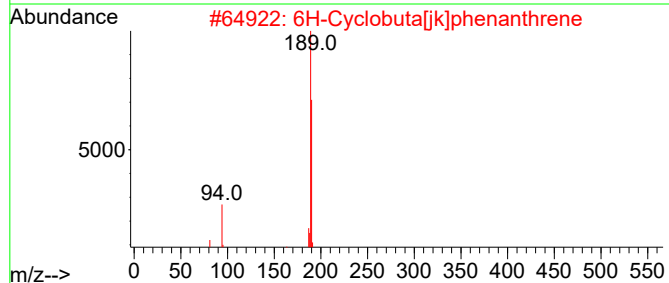
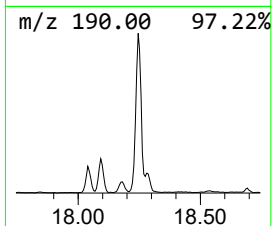
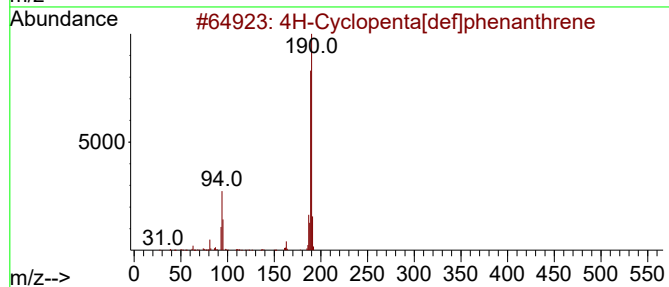
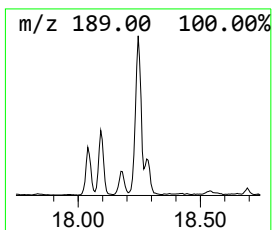
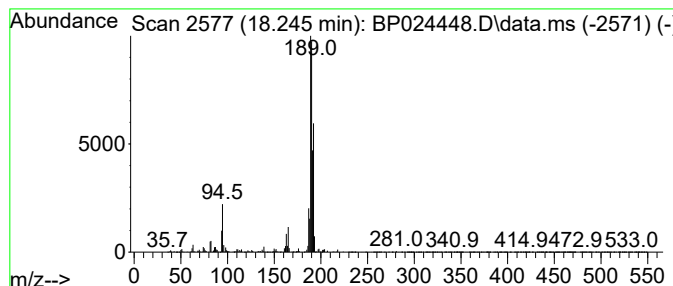
Quant Method : Z:\svoasrv\HPCHEM1\BNA\_P\Methods\8270E-BP041425.M  
 Quant Title : ASP BNA STANDARDS FOR 5 POINT CALIBRATION

TIC Library : C:\Database\NIST20.L  
 TIC Integration Parameters: LSCINT.P

\*\*\*\*\*  
 Peak Number 5 4H-Cyclopenta[def]phenanthrene Concentration Rank 4

R.T.	EstConc	Area	Relative to ISTD	R.T.
18.245	6.74 ng	708899	Phenanthrene-d10	17.139

Hit#	of	5	Tentative ID	MW	MolForm	CAS#	Qual
1			4H-Cyclopenta[def]phenanthrene	190	C15H10	000203-64-5	92
2			6H-Cyclobuta[jk]phenanthrene	190	C15H10	083469-43-6	58
3			Benzaldehyde, 3,5-dichloro-2-hyd...	190	C7H4Cl2O2	000090-60-8	52
4			2,3,5,6-Tetramethylterephthalald...	190	C12H14O2	007072-01-7	38
5			2-Amino-4,6-dichloropyrimidine-5...	191	C5H3Cl2N3O	005604-46-6	38





Data Path : Z:\svoasrv\HPCHEM1\BNA\_P\Data\BP042825\  
 Data File : BP024448.D  
 Acq On : 28 Apr 2025 22:28  
 Operator : RC/JU  
 Sample : Q1891-01  
 Misc :  
 ALS Vial : 15 Sample Multiplier: 1

Instrument :  
 BNA\_P  
 ClientSampleId :  
 MH-C

Quant Method : Z:\svoasrv\HPCHEM1\BNA\_P\Methods\8270E-BP041425.M  
 Quant Title : ASP BNA STANDARDS FOR 5 POINT CALIBRATION

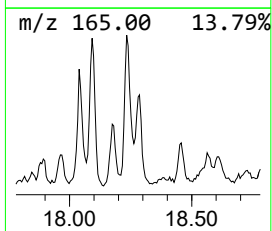
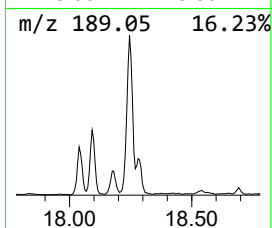
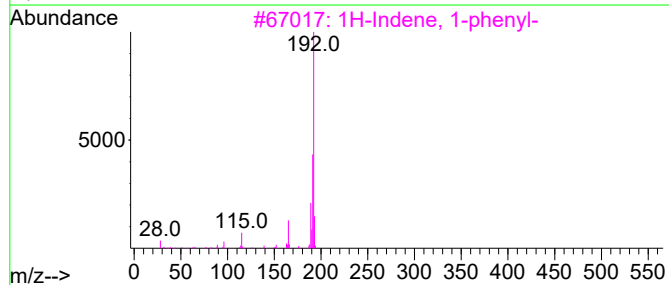
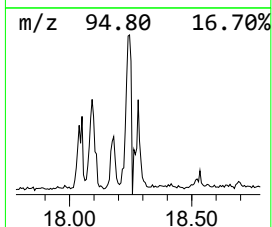
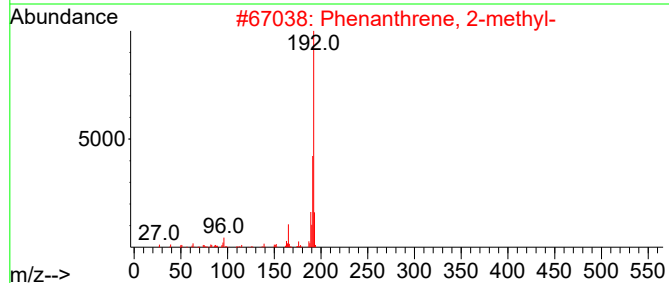
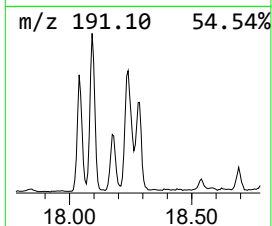
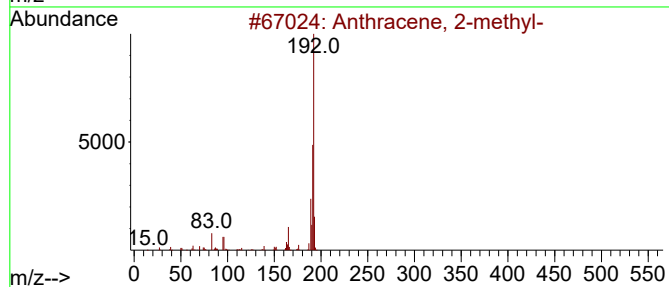
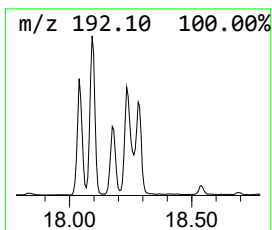
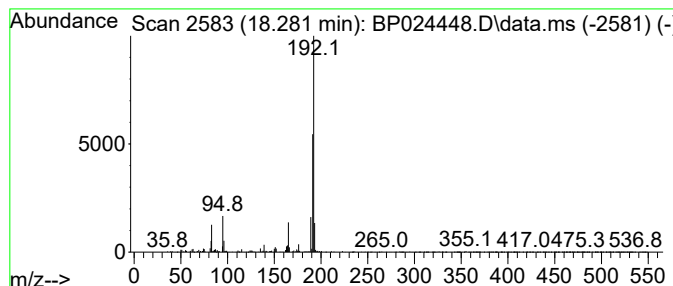
TIC Library : C:\Database\NIST20.L  
 TIC Integration Parameters: LSCINT.P

\*\*\*\*\*  
 Peak Number 6 Anthracene, 2-methyl- Concentration Rank 14

R.T.	EstConc	Area	Relative to ISTD	R.T.
18.281	2.49 ng	261580	Phenanthrene-d10	17.139

Hit#	of 5	Tentative ID	MW	MolForm	CAS#	Qual
1		Anthracene, 2-methyl-	192	C15H12	000613-12-7	87
2		Phenanthrene, 2-methyl-	192	C15H12	002531-84-2	87
3		1H-Indene, 1-phenyl-	192	C15H12	001961-96-2	87
4		Anthracene, 1-methyl-	192	C15H12	000610-48-0	83
5		Naphtho[1,2-b]norbornadiene	192	C15H12	1000210-14-8	83



Data Path : Z:\svoasrv\HPCHEM1\BNA\_P\Data\BP042825\  
 Data File : BP024448.D  
 Acq On : 28 Apr 2025 22:28  
 Operator : RC/JU  
 Sample : Q1891-01  
 Misc :  
 ALS Vial : 15 Sample Multiplier: 1

Instrument :  
 BNA\_P  
 ClientSampleId :  
 MH-C

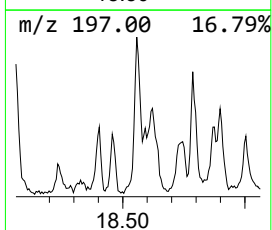
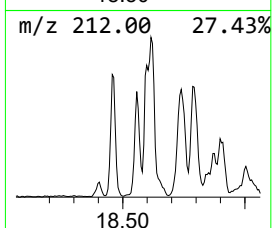
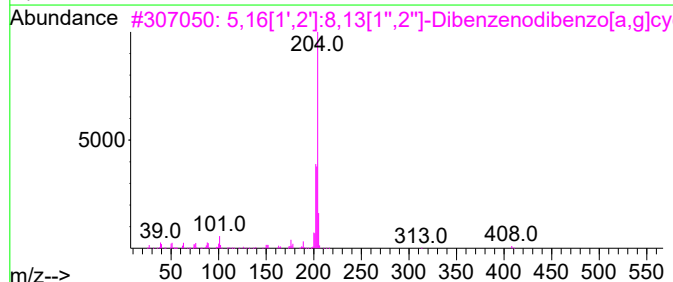
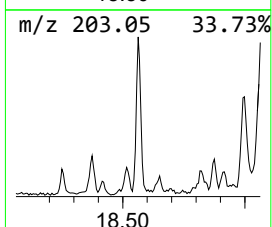
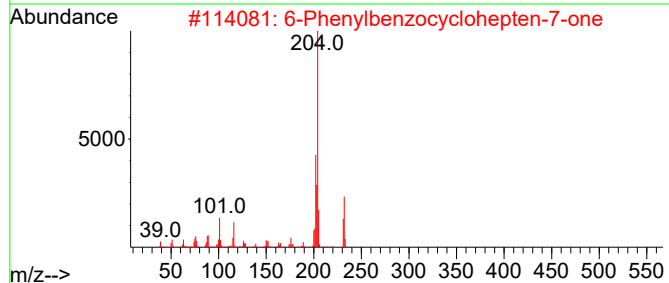
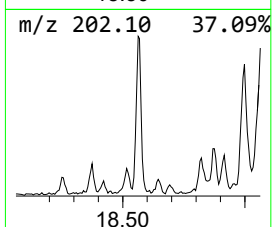
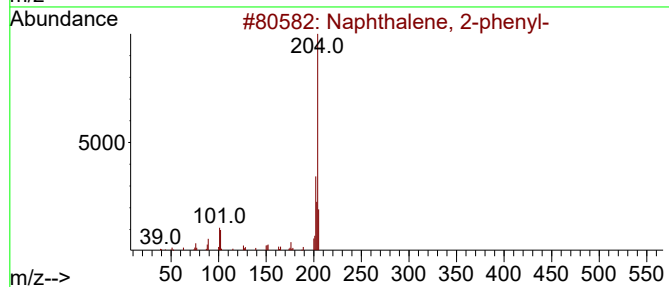
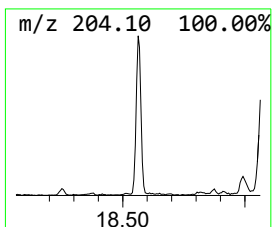
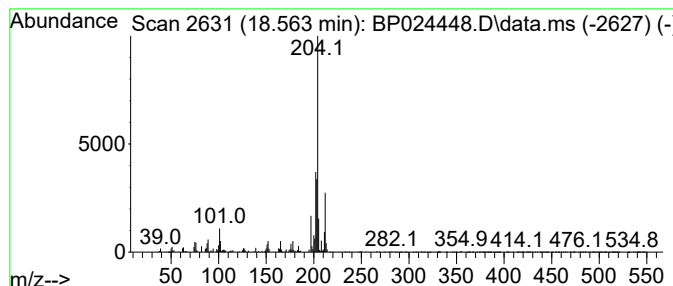
Quant Method : Z:\svoasrv\HPCHEM1\BNA\_P\Methods\8270E-BP041425.M  
 Quant Title : ASP BNA STANDARDS FOR 5 POINT CALIBRATION

TIC Library : C:\Database\NIST20.L  
 TIC Integration Parameters: LSCINT.P

\*\*\*\*\*  
 Peak Number 7 Naphthalene, 2-phenyl- Concentration Rank 15

R.T.	EstConc	Area	Relative to ISTD	R.T.
18.563	2.21 ng	232293	Phenanthrene-d10	17.139

Hit#	of	5	Tentative ID	MW	MolForm	CAS#	Qual
1			Naphthalene, 2-phenyl-	204	C16H12	000612-94-2	70
2			6-Phenylbenzocyclohepten-7-one	232	C17H12O	093327-56-1	64
3			5,16[1',2']:8,13[1'',2'']-Dibenz...	408	C32H24	005672-97-9	64
4			Tricyclo[8.2.2.2(4,7)]hexadeca-2...	204	C16H12	006572-60-7	60
5			[1,1'-Biphenyl]-4,4'-dicarbonitrile	204	C14H8N2	001591-30-6	55



Data Path : Z:\svoasrv\HPCHEM1\BNA\_P\Data\BP042825\  
 Data File : BP024448.D  
 Acq On : 28 Apr 2025 22:28  
 Operator : RC/JU  
 Sample : Q1891-01  
 Misc :  
 ALS Vial : 15 Sample Multiplier: 1

Instrument :  
 BNA\_P  
 ClientSampleId :  
 MH-C

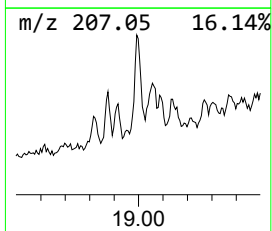
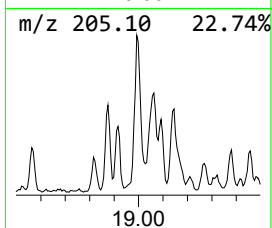
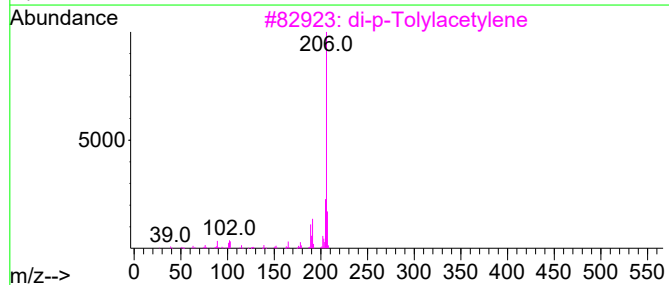
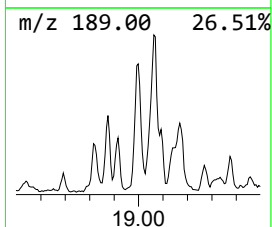
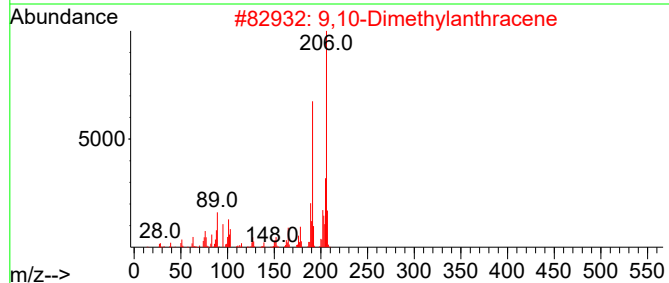
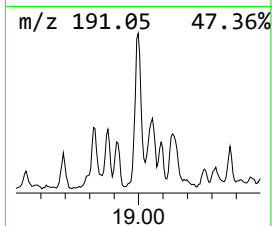
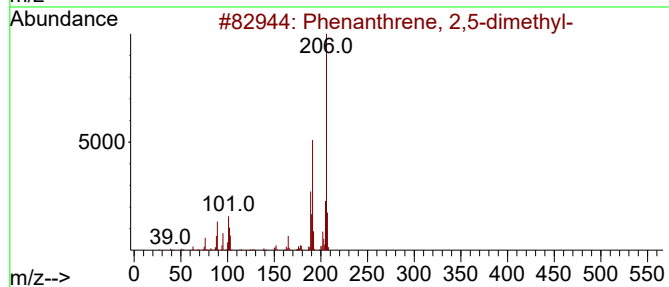
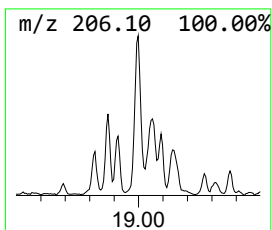
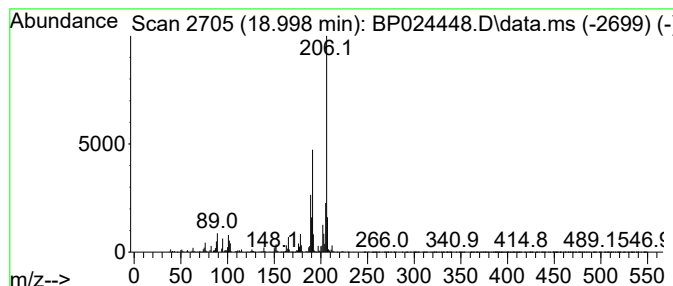
Quant Method : Z:\svoasrv\HPCHEM1\BNA\_P\Methods\8270E-BP041425.M  
 Quant Title : ASP BNA STANDARDS FOR 5 POINT CALIBRATION

TIC Library : C:\Database\NIST20.L  
 TIC Integration Parameters: LSCINT.P

\*\*\*\*\*  
 Peak Number 8 Phenanthrene, 2,5-dimethyl- Concentration Rank 6

R.T.	EstConc	Area	Relative to ISTD	R.T.
18.998	5.02 ng	528200	Phenanthrene-d10	17.139

Hit#	of 5	Tentative ID	MW	MolForm	CAS#	Qual
1		Phenanthrene, 2,5-dimethyl-	206	C16H14	003674-66-6	98
2		9,10-Dimethylanthracene	206	C16H14	000781-43-1	93
3		di-p-Tolylacetylene	206	C16H14	002789-88-0	91
4		Phenanthrene, 2,3-dimethyl-	206	C16H14	003674-65-5	87
5		Phenanthrene, 3,6-dimethyl-	206	C16H14	001576-67-6	87



Data Path : Z:\svoasrv\HPCHEM1\BNA\_P\Data\BP042825\  
 Data File : BP024448.D  
 Acq On : 28 Apr 2025 22:28  
 Operator : RC/JU  
 Sample : Q1891-01  
 Misc :  
 ALS Vial : 15 Sample Multiplier: 1

Instrument :  
 BNA\_P  
 ClientSampleId :  
 MH-C

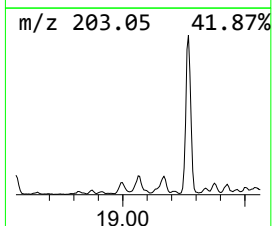
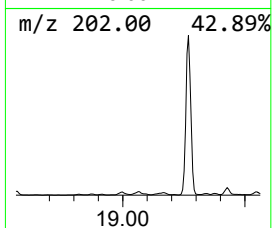
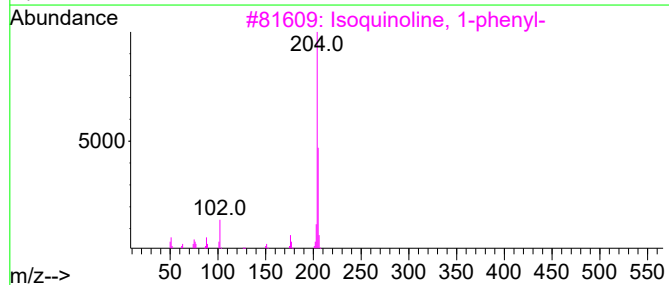
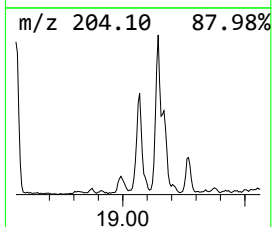
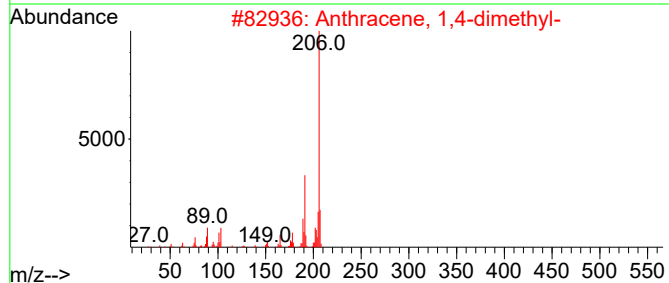
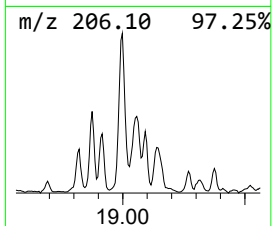
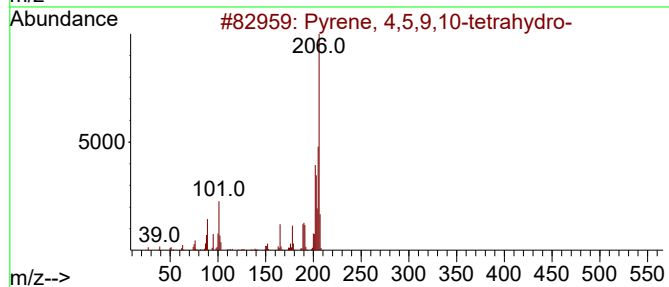
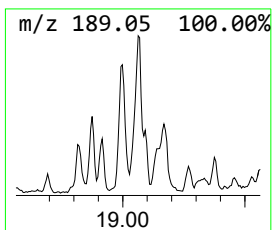
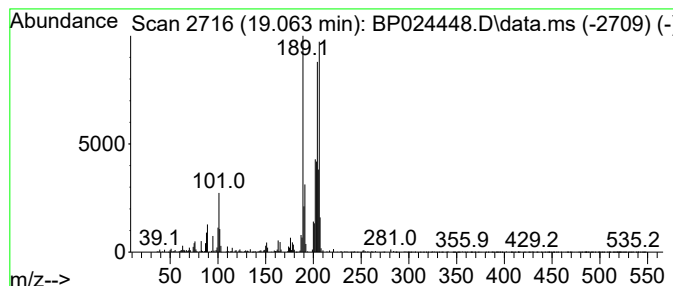
Quant Method : Z:\svoasrv\HPCHEM1\BNA\_P\Methods\8270E-BP041425.M  
 Quant Title : ASP BNA STANDARDS FOR 5 POINT CALIBRATION

TIC Library : C:\Database\NIST20.L  
 TIC Integration Parameters: LSCINT.P

\*\*\*\*\*  
 Peak Number 9 unknown19.063 Concentration Rank 13

R.T.	EstConc	Area	Relative to ISTD	R.T.
19.063	2.56 ng	268927	Phenanthrene-d10	17.139

Hit#	of	5	Tentative ID	MW	MolForm	CAS#	Qual
1			Pyrene, 4,5,9,10-tetrahydro-	206	C16H14	000781-17-9	38
2			Anthracene, 1,4-dimethyl-	206	C16H14	000781-92-0	35
3			Isoquinoline, 1-phenyl-	205	C15H11N	003297-72-1	35
4			Phenanthrene, 2,7-dimethyl-	206	C16H14	001576-69-8	35
5			1,3-Butadiene, 1,4-diphenyl-, (E...)	206	C16H14	000538-81-8	30



Data Path : Z:\svoasrv\HPCHEM1\BNA\_P\Data\BP042825\  
 Data File : BP024448.D  
 Acq On : 28 Apr 2025 22:28  
 Operator : RC/JU  
 Sample : Q1891-01  
 Misc :  
 ALS Vial : 15 Sample Multiplier: 1

Instrument :  
 BNA\_P  
 ClientSampleId :  
 MH-C

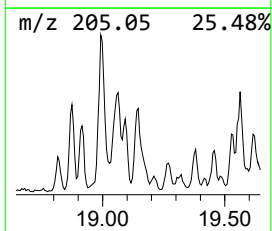
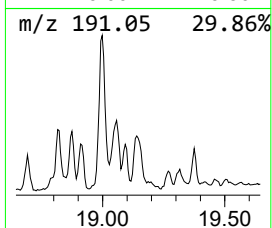
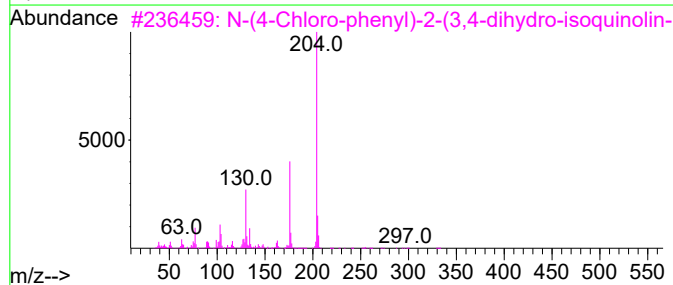
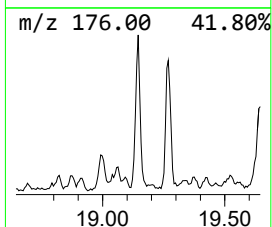
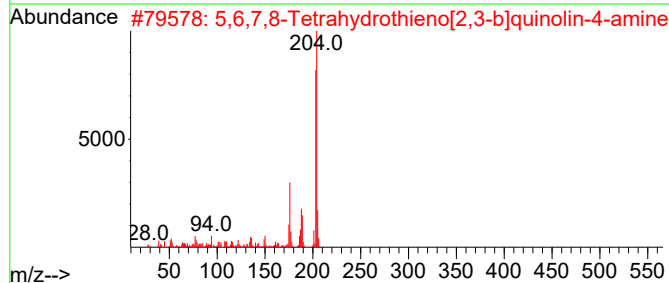
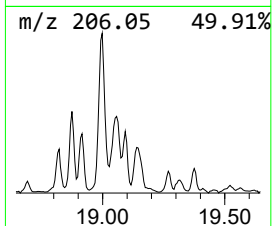
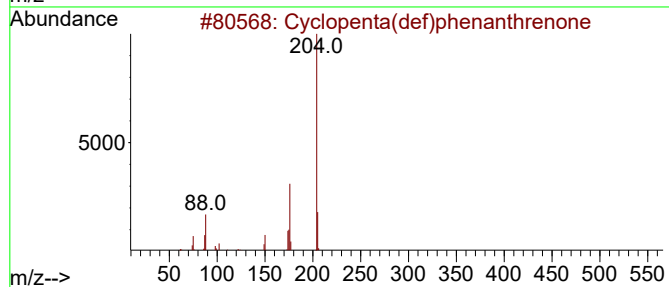
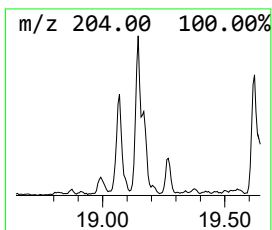
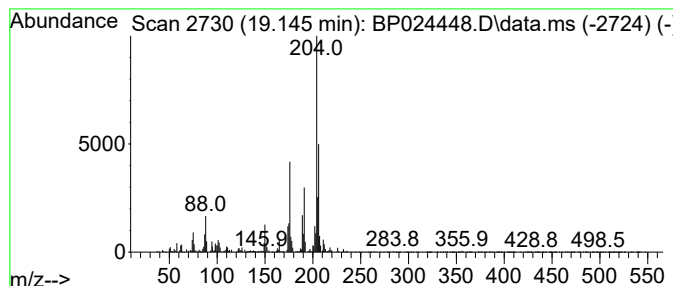
Quant Method : Z:\svoasrv\HPCHEM1\BNA\_P\Methods\8270E-BP041425.M  
 Quant Title : ASP BNA STANDARDS FOR 5 POINT CALIBRATION

TIC Library : C:\Database\NIST20.L  
 TIC Integration Parameters: LSCINT.P

\*\*\*\*\*  
 Peak Number 10 Cyclopenta(def)phenanthrene Concentration Rank 9

R.T.	EstConc	Area	Relative to ISTD	R.T.
19.145	3.88 ng	407883	Phenanthrene-d10	17.139

Hit#	of 5	Tentative ID	MW	MolForm	CAS#	Qual
1		Cyclopenta(def)phenanthrene	204	C15H8O	005737-13-3	95
2		5,6,7,8-Tetrahydrothieno[2,3-b]q...	204	C11H12N2S	122914-50-5	50
3		N-(4-Chloro-phenyl)-2-(3,4-dihyd...	330	C17H15ClN2OS	1010296-34-3	43
4		3,4-Biphenyldicarbonitrile	204	C14H8N2	004128-63-6	43
5		L-Rhamnose, (R,R,S,S)-, 4TMS der...	452	C18H44O5Si4	108392-01-4	43



Data Path : Z:\svoasrv\HPCHEM1\BNA\_P\Data\BP042825\  
 Data File : BP024448.D  
 Acq On : 28 Apr 2025 22:28  
 Operator : RC/JU  
 Sample : Q1891-01  
 Misc :  
 ALS Vial : 15 Sample Multiplier: 1

Instrument :  
 BNA\_P  
 ClientSampleId :  
 MH-C

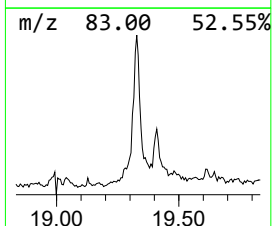
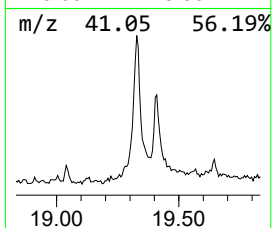
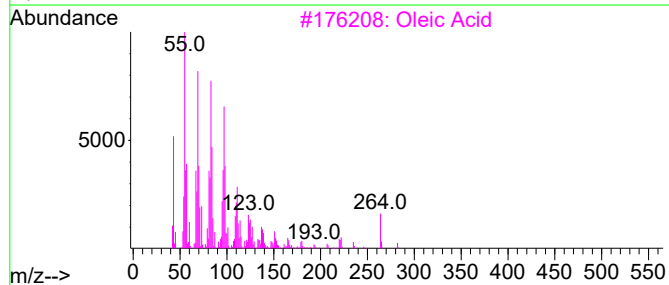
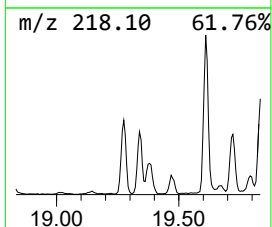
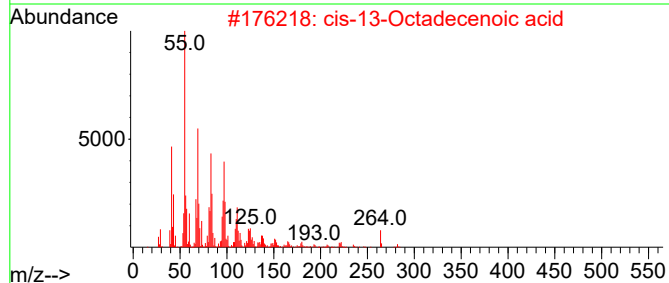
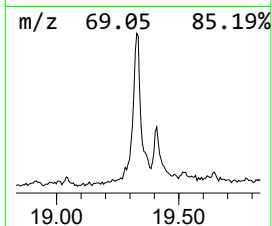
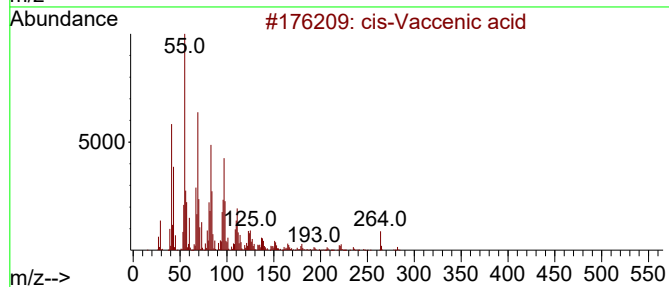
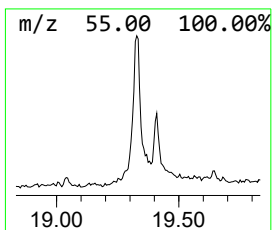
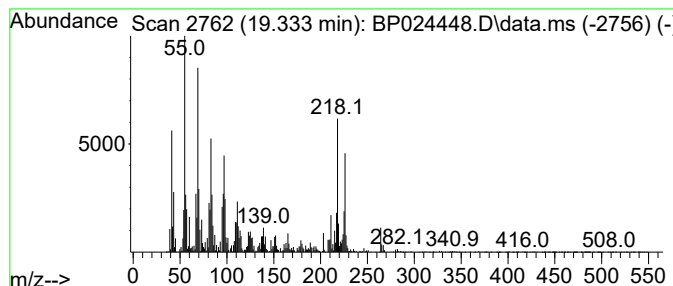
Quant Method : Z:\svoasrv\HPCHEM1\BNA\_P\Methods\8270E-BP041425.M  
 Quant Title : ASP BNA STANDARDS FOR 5 POINT CALIBRATION

TIC Library : C:\Database\NIST20.L  
 TIC Integration Parameters: LSCINT.P

\*\*\*\*\*  
 Peak Number 11 cis-Vaccenic acid Concentration Rank 5

R.T.	EstConc	Area	Relative to ISTD	R.T.
19.333	5.25 ng	552094	Phenanthrene-d10	17.139

Hit#	of 5	Tentative ID	MW	MolForm	CAS#	Qual
1		cis-Vaccenic acid	282	C18H34O2	000506-17-2	97
2		cis-13-Octadecenoic acid	282	C18H34O2	013126-39-1	96
3		Oleic Acid	282	C18H34O2	000112-80-1	95
4		9-Octadecenoic acid, (E)-	282	C18H34O2	000112-79-8	95
5		trans-13-Octadecenoic acid	282	C18H34O2	000693-71-0	93



Data Path : Z:\svoasrv\HPCHEM1\BNA\_P\Data\BP042825\  
 Data File : BP024448.D  
 Acq On : 28 Apr 2025 22:28  
 Operator : RC/JU  
 Sample : Q1891-01  
 Misc :  
 ALS Vial : 15 Sample Multiplier: 1

Instrument :  
 BNA\_P  
 ClientSampleId :  
 MH-C

Quant Method : Z:\svoasrv\HPCHEM1\BNA\_P\Methods\8270E-BP041425.M  
 Quant Title : ASP BNA STANDARDS FOR 5 POINT CALIBRATION

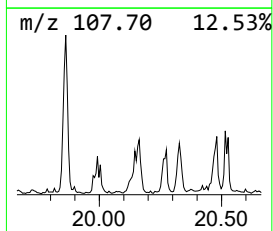
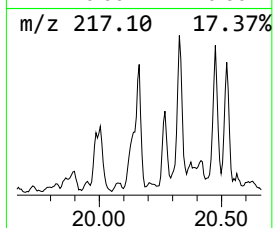
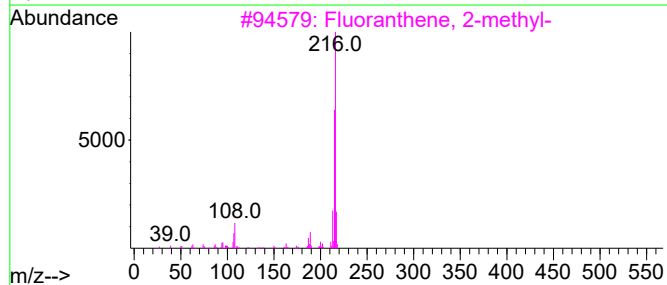
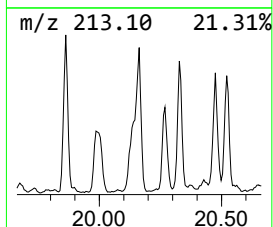
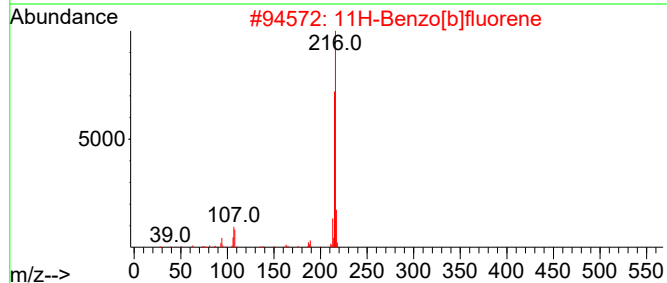
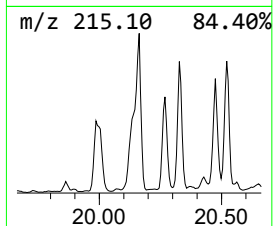
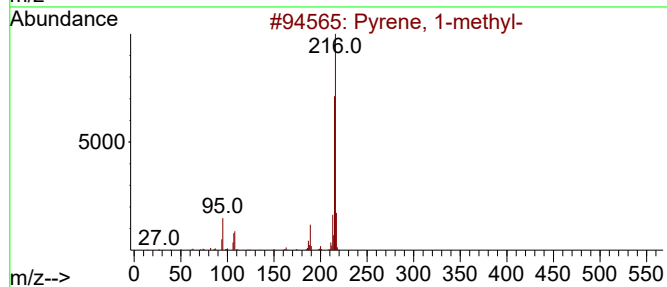
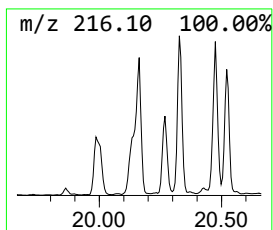
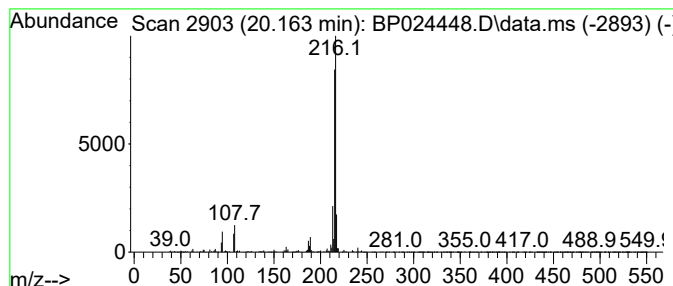
TIC Library : C:\Database\NIST20.L  
 TIC Integration Parameters: LSCINT.P

\*\*\*\*\*  
 Peak Number 12 Pyrene, 1-methyl- Concentration Rank 8

R.T.	EstConc	Area	Relative to ISTD	R.T.
20.163	4.15 ng	833954	Chrysene-d12	21.586

Hit#	of 5	Tentative ID	MW	MolForm	CAS#	Qual
1		Pyrene, 1-methyl-	216	C17H12	002381-21-7	94
2		11H-Benzo[b]fluorene	216	C17H12	000243-17-4	94
3		Fluoranthene, 2-methyl-	216	C17H12	033543-31-6	93
4		11H-Benzo[a]fluorene	216	C17H12	000238-84-6	93
5		Pyrene, 2-methyl-	216	C17H12	003442-78-2	76



Data Path : Z:\svoasrv\HPCHEM1\BNA\_P\Data\BP042825\  
 Data File : BP024448.D  
 Acq On : 28 Apr 2025 22:28  
 Operator : RC/JU  
 Sample : Q1891-01  
 Misc :  
 ALS Vial : 15 Sample Multiplier: 1

Instrument :  
 BNA\_P  
 ClientSampleId :  
 MH-C

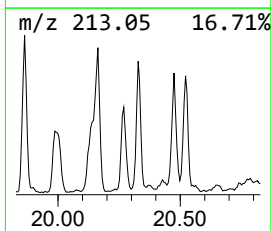
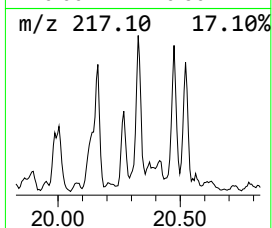
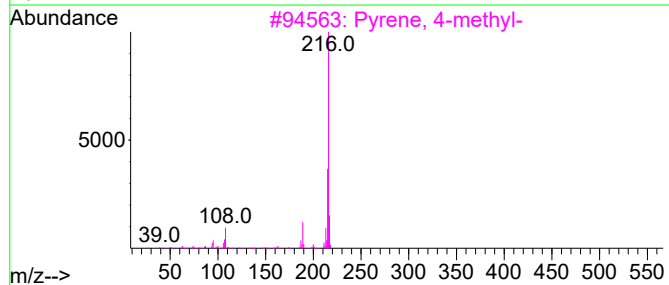
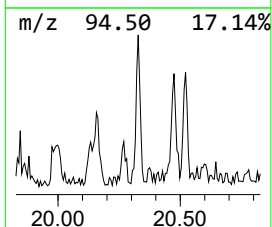
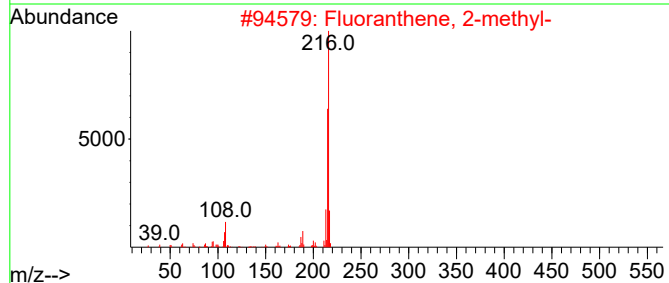
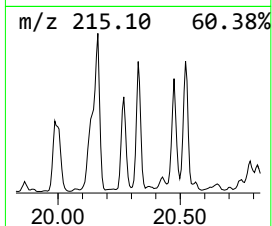
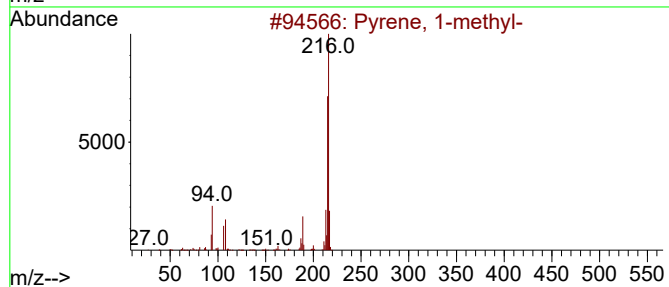
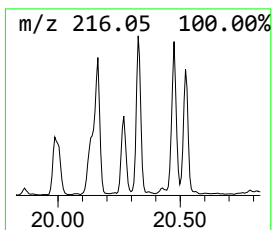
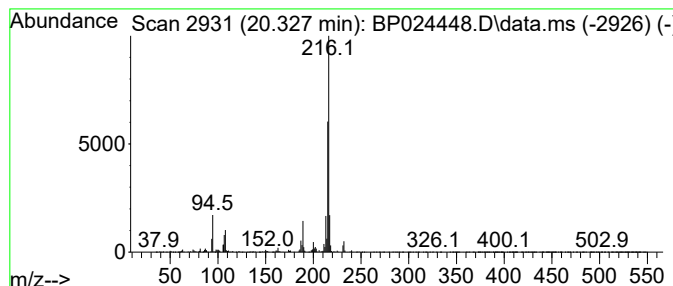
Quant Method : Z:\svoasrv\HPCHEM1\BNA\_P\Methods\8270E-BP041425.M  
 Quant Title : ASP BNA STANDARDS FOR 5 POINT CALIBRATION

TIC Library : C:\Database\NIST20.L  
 TIC Integration Parameters: LSCINT.P

\*\*\*\*\*  
 Peak Number 13 Fluoranthene, 2-methyl- Concentration Rank 11

R.T.	EstConc	Area	Relative to ISTD	R.T.
20.328	3.17 ng	637178	Chrysene-d12	21.586

Hit#	of 5	Tentative ID	MW	MolForm	CAS#	Qual
1		Pyrene, 1-methyl-	216	C17H12	002381-21-7	98
2		Fluoranthene, 2-methyl-	216	C17H12	033543-31-6	96
3		Pyrene, 4-methyl-	216	C17H12	003353-12-6	94
4		Pyrene, 2-methyl-	216	C17H12	003442-78-2	94
5		11H-Benzo[a]fluorene	216	C17H12	000238-84-6	93





Data Path : Z:\svoasrv\HPCHEM1\BNA\_P\Data\BP042825\  
 Data File : BP024448.D  
 Acq On : 28 Apr 2025 22:28  
 Operator : RC/JU  
 Sample : Q1891-01  
 Misc :  
 ALS Vial : 15 Sample Multiplier: 1

Instrument :  
 BNA\_P  
 ClientSampleId :  
 MH-C

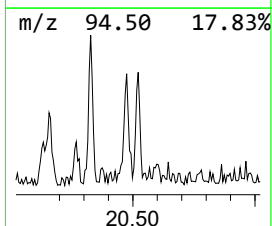
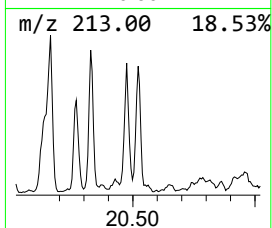
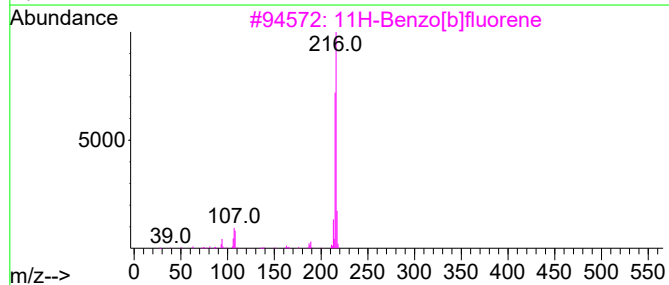
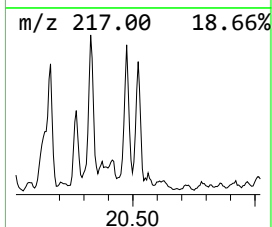
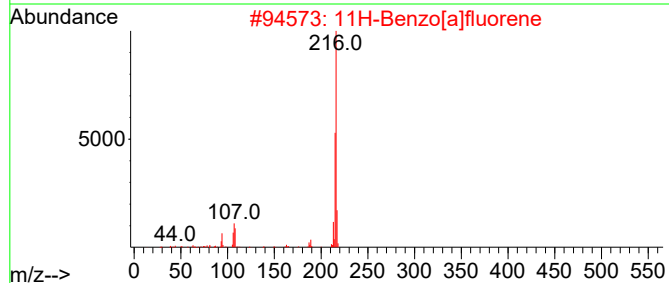
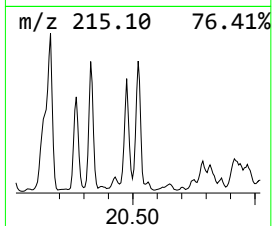
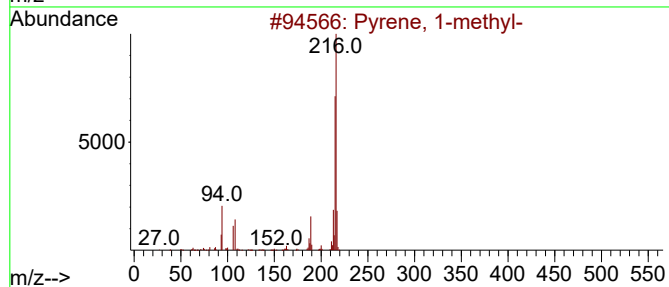
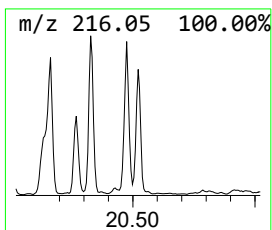
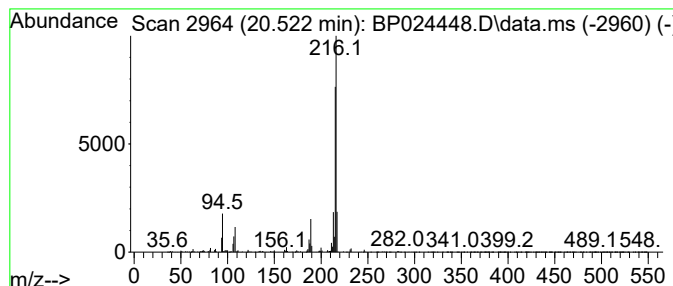
Quant Method : Z:\svoasrv\HPCHEM1\BNA\_P\Methods\8270E-BP041425.M  
 Quant Title : ASP BNA STANDARDS FOR 5 POINT CALIBRATION

TIC Library : C:\Database\NIST20.L  
 TIC Integration Parameters: LSCINT.P

\*\*\*\*\*  
 Peak Number 14 11H-Benzo[a]fluorene Concentration Rank 16

R.T.	EstConc	Area	Relative to ISTD	R.T.
20.522	2.07 ng	416367	Chrysene-d12	21.586

Hit#	of 5	Tentative ID	MW	MolForm	CAS#	Qual
1		Pyrene, 1-methyl-	216	C17H12	002381-21-7	97
2		11H-Benzo[a]fluorene	216	C17H12	000238-84-6	94
3		11H-Benzo[b]fluorene	216	C17H12	000243-17-4	91
4		Pyrene, 2-methyl-	216	C17H12	003442-78-2	90
5		Fluoranthene, 2-methyl-	216	C17H12	033543-31-6	87



Data Path : Z:\svoasrv\HPCHEM1\BNA\_P\Data\BP042825\  
 Data File : BP024448.D  
 Acq On : 28 Apr 2025 22:28  
 Operator : RC/JU  
 Sample : Q1891-01  
 Misc :  
 ALS Vial : 15 Sample Multiplier: 1

Instrument :  
 BNA\_P  
 ClientSampleId :  
 MH-C

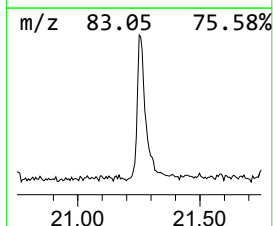
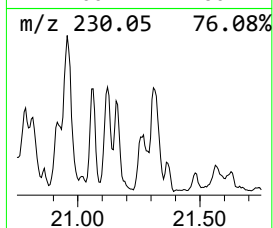
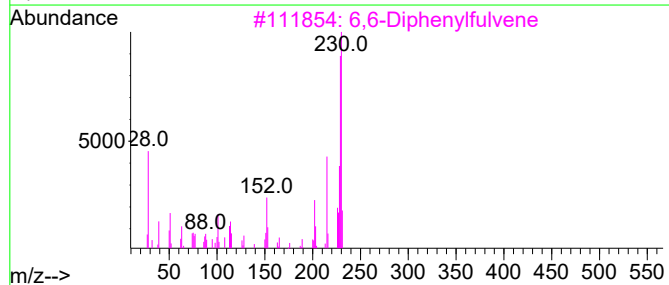
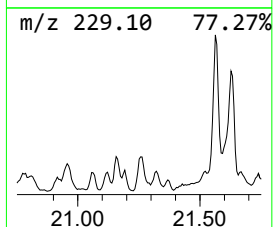
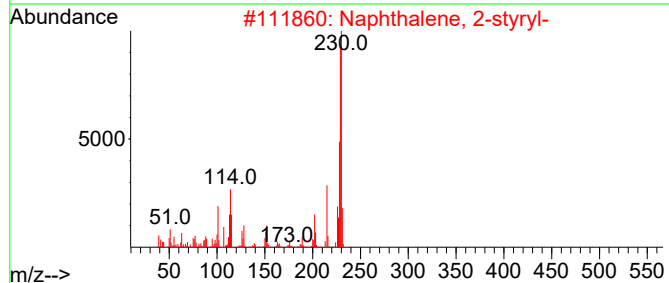
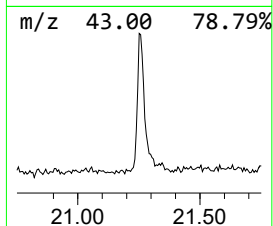
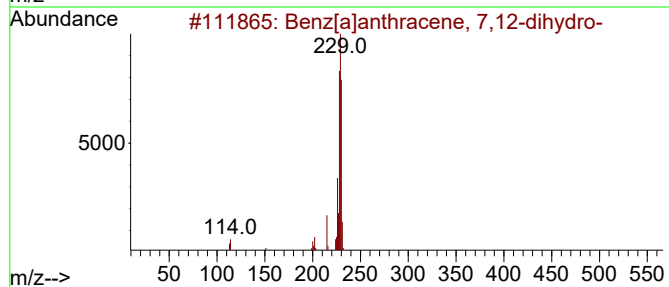
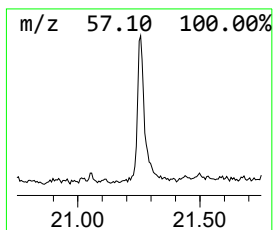
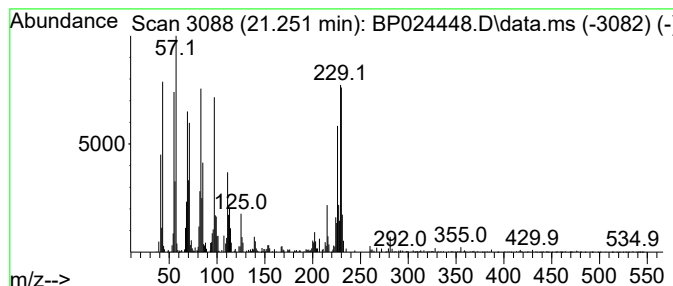
Quant Method : Z:\svoasrv\HPCHEM1\BNA\_P\Methods\8270E-BP041425.M  
 Quant Title : ASP BNA STANDARDS FOR 5 POINT CALIBRATION

TIC Library : C:\Database\NIST20.L  
 TIC Integration Parameters: LSCINT.P

\*\*\*\*\*  
 Peak Number 15 Benz[a]anthracene, 7,12-dih... Concentration Rank 10

R.T.	EstConc	Area	Relative to ISTD	R.T.
21.251	3.61 ng	726075	Chrysene-d12	21.586

Hit#	of	5	Tentative ID	MW	MolForm	CAS#	Qual
1			Benz[a]anthracene, 7,12-dihydro-	230	C18H14	016434-59-6	52
2			Naphthalene, 2-styryl-	230	C18H14	002039-70-5	46
3			6,6-Diphenylfulvene	230	C18H14	002175-90-8	41
4			Naphthacene, 5,12-dihydro-	230	C18H14	000959-02-4	38
5			Tetradecanoic acid, hexadecyl ester	452	C30H60O2	002599-01-1	38



Data Path : Z:\svoasrv\HPCHEM1\BNA\_P\Data\BP042825\  
 Data File : BP024448.D  
 Acq On : 28 Apr 2025 22:28  
 Operator : RC/JU  
 Sample : Q1891-01  
 Misc :  
 ALS Vial : 15 Sample Multiplier: 1

Instrument :  
 BNA\_P  
 ClientSampleId :  
 MH-C

Quant Method : Z:\svoasrv\HPCHEM1\BNA\_P\Methods\8270E-BP041425.M  
 Quant Title : ASP BNA STANDARDS FOR 5 POINT CALIBRATION

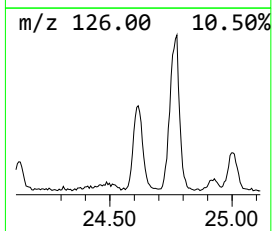
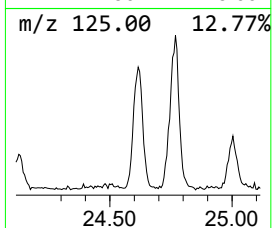
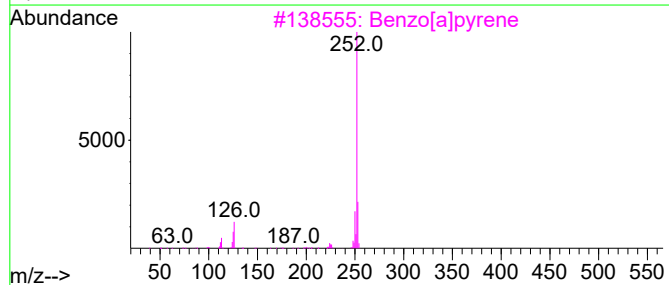
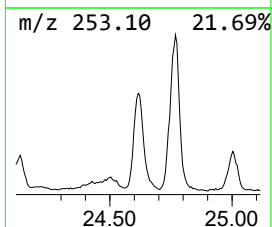
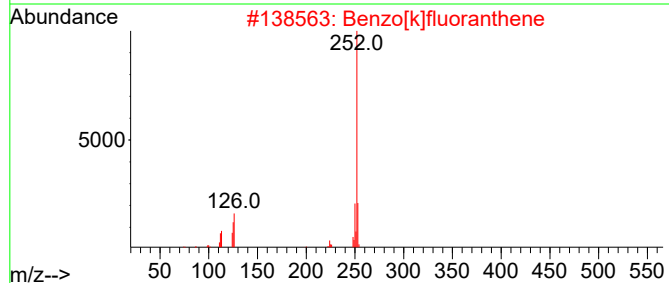
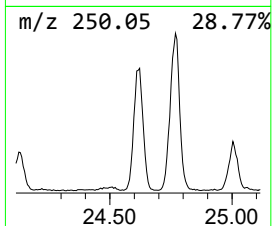
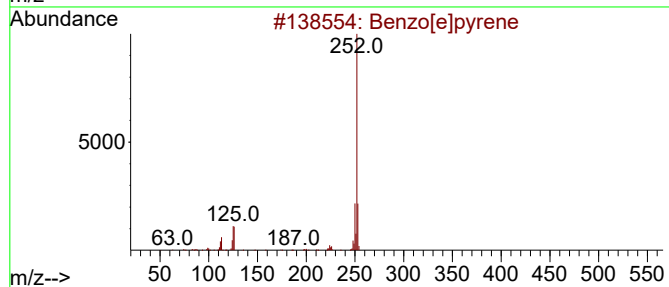
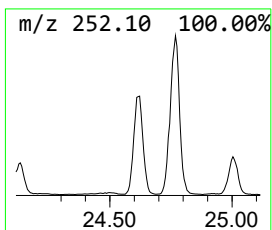
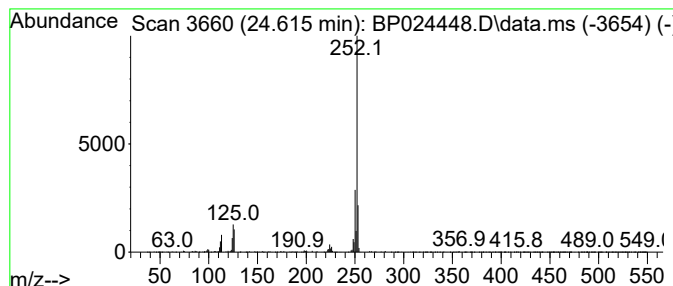
TIC Library : C:\Database\NIST20.L  
 TIC Integration Parameters: LSCINT.P

\*\*\*\*\*  
 Peak Number 16 Benzo[e]pyrene Concentration Rank 2

R.T.	EstConc	Area	Relative to ISTD	R.T.
24.616	8.06 ng	1085400	Perylene-d12	24.927

Hit#	of 5	Tentative ID	MW	MolForm	CAS#	Qual
1		Benzo[e]pyrene	252	C20H12	000192-97-2	99
2		Benzo[k]fluoranthene	252	C20H12	000207-08-9	97
3		Benzo[a]pyrene	252	C20H12	000050-32-8	97
4		Perylene	252	C20H12	000198-55-0	95
5		Benzo[j]fluoranthene	252	C20H12	000205-82-3	90



Data Path : Z:\svoasrv\HPCHEM1\BNA\_P\Data\BP042825\  
 Data File : BP024448.D  
 Acq On : 28 Apr 2025 22:28  
 Operator : RC/JU  
 Sample : Q1891-01  
 Misc :  
 ALS Vial : 15 Sample Multiplier: 1

Instrument :  
 BNA\_P  
 ClientSampleId :  
 MH-C

Quant Method : Z:\svoasrv\HPCHEM1\BNA\_P\Methods\8270E-BP041425.M  
 Quant Title : ASP BNA STANDARDS FOR 5 POINT CALIBRATION

TIC Library : C:\Database\NIST0.L  
 TIC Integration Parameters: LSCINT.P

TIC Top Hit name	RT	EstConc	Units	Response	--Internal Standard--			
					#	RT	Resp	Conc
2-Pentanone, 4-...	4.881	4.8	ng	210304	1	7.716	872757	20.0
Benzophenone	15.722	7.2	ng	632517	3	14.339	1765170	20.0
Phenanthrene, 4...	18.039	3.1	ng	325079	4	17.139	2105050	20.0
Phenanthrene, 2...	18.086	9.1	ng	957146	4	17.139	2105050	20.0
4H-Cyclopenta[d...	18.245	6.7	ng	708899	4	17.139	2105050	20.0
Anthracene, 2-m...	18.281	2.5	ng	261580	4	17.139	2105050	20.0
Naphthalene, 2-...	18.563	2.2	ng	232293	4	17.139	2105050	20.0
Phenanthrene, 2...	18.998	5.0	ng	528200	4	17.139	2105050	20.0
unknown19.063	19.063	2.6	ng	268927	4	17.139	2105050	20.0
Cyclopenta(def)...	19.145	3.9	ng	407883	4	17.139	2105050	20.0
cis-Vaccenic acid	19.333	5.3	ng	552094	4	17.139	2105050	20.0
Pyrene, 1-methyl-	20.163	4.2	ng	833954	5	21.586	4017520	20.0
Fluoranthene, 2...	20.328	3.2	ng	637178	5	21.586	4017520	20.0
11H-Benzo[a]flu...	20.522	2.1	ng	416367	5	21.586	4017520	20.0
Benz[a]anthrace...	21.251	3.6	ng	726075	5	21.586	4017520	20.0
Benzo[e]pyrene	24.616	8.1	ng	1085400	6	24.927	2694400	20.0