

Data Path : Z:\svoasrv\HPCHEM1\BNA_P\Data\BP042825\
 Data File : BP024450.D
 Acq On : 28 Apr 2025 23:49
 Operator : RC/JU
 Sample : Q1896-01
 Misc :
 ALS Vial : 17 Sample Multiplier: 1

Instrument :
 BNA_P
 ClientSampleId :
 295-BERGEN-RO

Integration Parameters: rteint.p
 Integrator: RTE
 Smoothing : ON Filtering: 5
 Sampling : 1 Min Area: 3 % of largest Peak
 Start Thrs: 0.2 Max Peaks: 100
 Stop Thrs : 0 Peak Location: TOP

If leading or trailing edge < 100 prefer < Baseline drop else tangent >
 Peak separation: 5

Method : Z:\svoasrv\HPCHEM1\BNA_P\Methods\8270E-BP041425.M
 Title : ASP BNA STANDARDS FOR 5 POINT CALIBRATION

Signal : TIC: BP024450.D\data.ms

peak #	R.T. min	first scan	max scan	last scan	PK TY	peak height	corr. area	corr. % max.	% of total
1	4.881	299	305	312	rBV	146274	206547	3.74%	0.474%
2	5.334	376	382	391	rBV	1715070	2499111	45.25%	5.732%
3	6.905	639	649	666	rBV	1654082	2715573	49.17%	6.229%
4	7.716	780	787	795	rBV	586370	891528	16.14%	2.045%
5	8.863	975	982	992	rBV	981981	1647897	29.84%	3.780%
6	10.487	1250	1258	1265	rBV	712031	1286260	23.29%	2.950%
7	12.951	1669	1677	1685	rBV	2799273	3787056	68.57%	8.686%
8	14.063	1861	1866	1872	rBV	51493	87050	1.58%	0.200%
9	14.340	1905	1913	1920	rBV	1199131	1779304	32.22%	4.081%
10	14.404	1921	1924	1929	rVB	66288	92772	1.68%	0.213%
11	14.751	1979	1983	1987	rVB2	33948	55247	1.00%	0.127%
12	15.404	2089	2094	2099	rBV	115399	212260	3.84%	0.487%
13	15.622	2128	2131	2138	rVB2	72400	113343	2.05%	0.260%
14	15.722	2143	2148	2155	rVB	366038	531727	9.63%	1.220%
15	15.857	2165	2171	2177	rBV	2812614	3696819	66.94%	8.479%
16	16.116	2211	2215	2222	rVB	146683	232780	4.21%	0.534%
17	16.951	2354	2357	2366	rVB	275064	462843	8.38%	1.062%
18	17.139	2384	2389	2393	rBV2	1546182	2104753	38.11%	4.828%
19	17.181	2393	2396	2404	rVV	866381	1179067	21.35%	2.704%
20	17.275	2408	2412	2418	rVB	325471	413156	7.48%	0.948%
21	18.051	2540	2544	2546	rBV	128301	197656	3.58%	0.453%
22	18.086	2546	2550	2558	rVB2	488598	816323	14.78%	1.872%
23	18.245	2573	2577	2581	rBV3	192331	283084	5.13%	0.649%
24	19.275	2747	2752	2757	rBV	1078937	1477949	26.76%	3.390%
25	19.410	2772	2775	2783	rVB5	137438	259465	4.70%	0.595%
26	19.622	2808	2811	2812	rBV	193078	198885	3.60%	0.456%
27	19.651	2812	2816	2821	rVB	1107042	1375543	24.91%	3.155%
28	19.869	2848	2853	2860	rVB	4327862	5522801	100.00%	12.667%
29	20.169	2901	2904	2909	rVB	247349	328785	5.95%	0.754%
30	20.275	2918	2922	2926	rBV	227902	302101	5.47%	0.693%
31	21.592	3138	3146	3151	rBV2	1651450	3396843	61.51%	7.791%
32	21.639	3151	3154	3162	rVB	433161	716453	12.97%	1.643%
33	23.880	3528	3535	3542	rBV	327264	973783	17.63%	2.234%
34	24.780	3682	3688	3700	rVB	359979	913562	16.54%	2.095%
35	24.939	3706	3715	3722	rBV	1114403	2840187	51.43%	6.514%

Data Path : Z:\svoasrv\HPCHEM1\BNA_P\Data\BP042825\
Data File : BP024450.D
Acq On : 28 Apr 2025 23:49
Operator : RC/JU
Sample : Q1896-01
Misc :
ALS Vial : 17 Sample Multiplier: 1

Instrument :
BNA_P
ClientSampleId :
295-BERGEN-RO

Integration Parameters: rteint.p
Integrator: RTE
Smoothing : ON Filtering: 5
Sampling : 1 Min Area: 3 % of largest Peak
Start Thrs: 0.2 Max Peaks: 100
Stop Thrs : 0 Peak Location: TOP

If leading or trailing edge < 100 prefer < Baseline drop else tangent >
Peak separation: 5

Method : Z:\svoasrv\HPCHEM1\BNA_P\Methods\8270E-BP041425.M
Title : ASP BNA STANDARDS FOR 5 POINT CALIBRATION

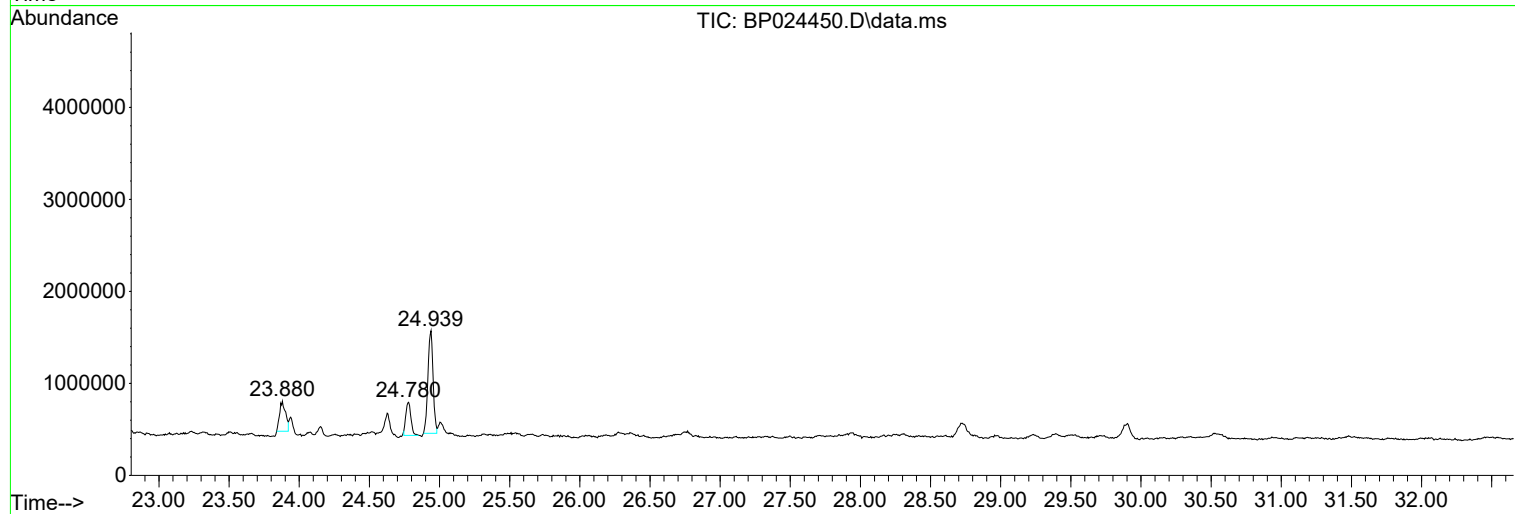
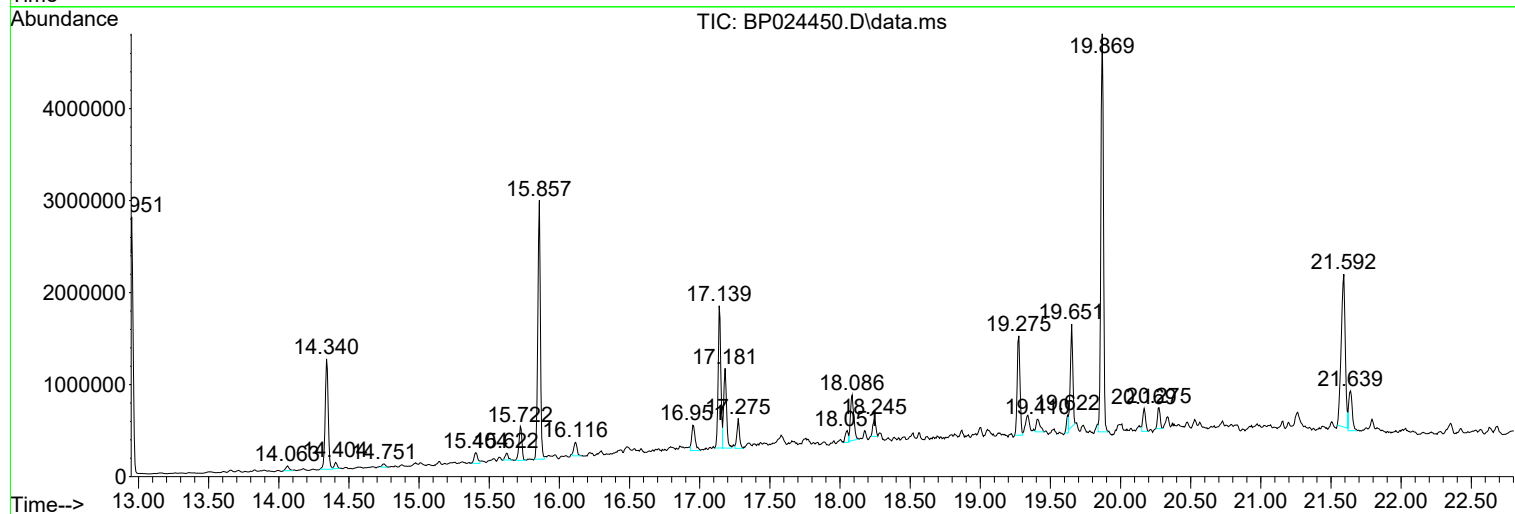
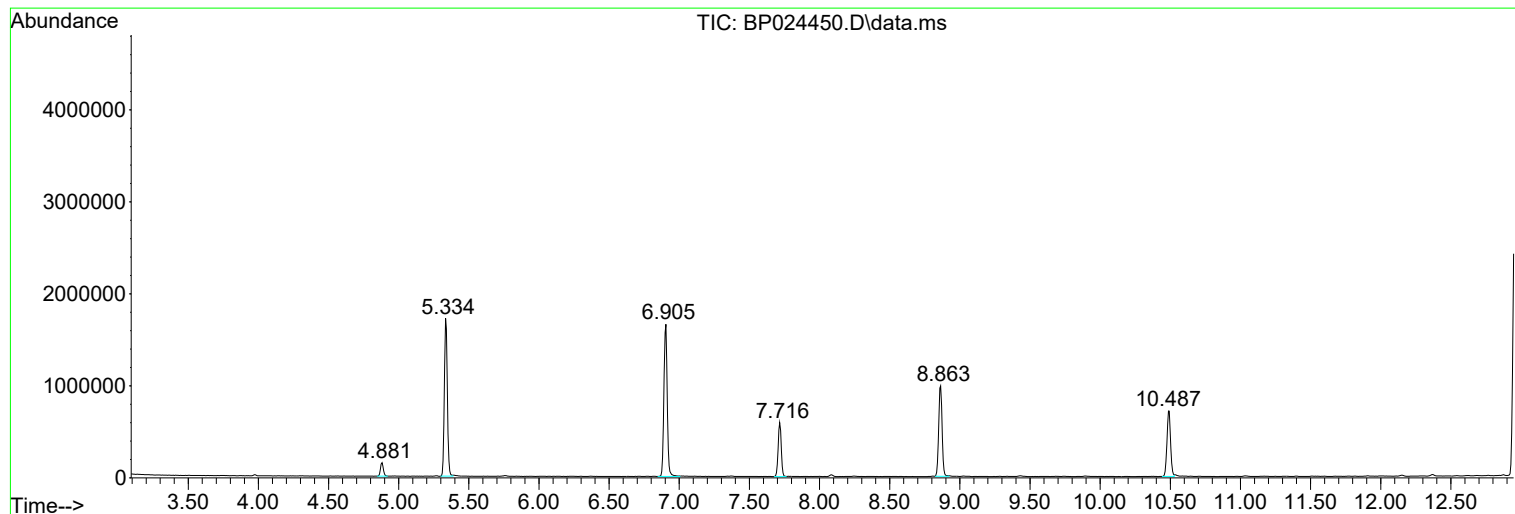
Sum of corrected areas: 43598513

Data Path : Z:\svoasrv\HPCHEM1\BNA_P\Data\BP042825\
 Data File : BP024450.D
 Acq On : 28 Apr 2025 23:49
 Operator : RC/JU
 Sample : Q1896-01
 Misc :
 ALS Vial : 17 Sample Multiplier: 1

Instrument :
 BNA_P
 ClientSampleId :
 295-BERGEN-RO

Quant Method : Z:\svoasrv\HPCHEM1\BNA_P\Methods\8270E-BP041425.M
 Quant Title : ASP BNA STANDARDS FOR 5 POINT CALIBRATION

TIC Library : C:\Database\NIST20.L
 TIC Integration Parameters: LSCINT.P



Data Path : Z:\svoasrv\HPCHEM1\BNA_P\Data\BP042825\
 Data File : BP024450.D
 Acq On : 28 Apr 2025 23:49
 Operator : RC/JU
 Sample : Q1896-01
 Misc :
 ALS Vial : 17 Sample Multiplier: 1

Instrument :
 BNA_P
 ClientSampleId :
 295-BERGEN-RO

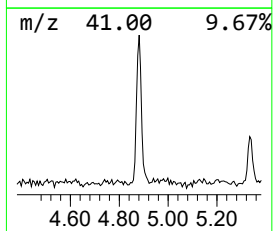
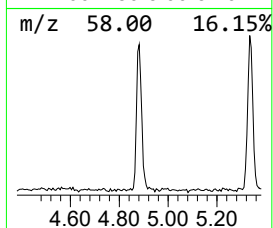
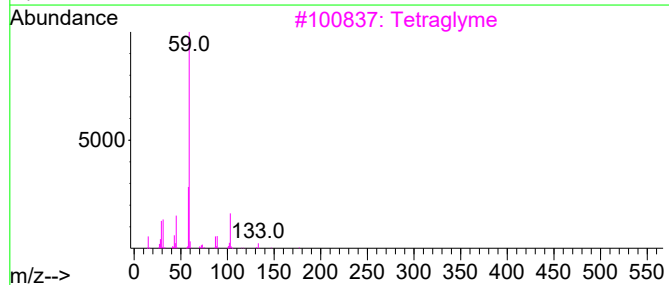
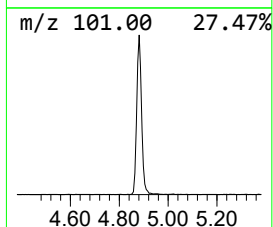
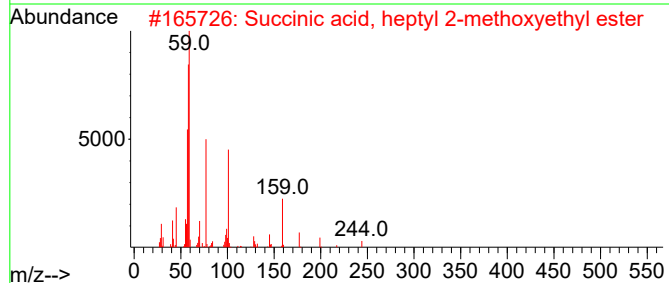
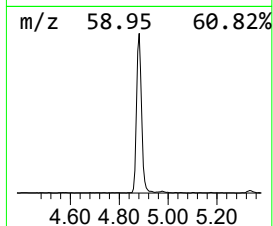
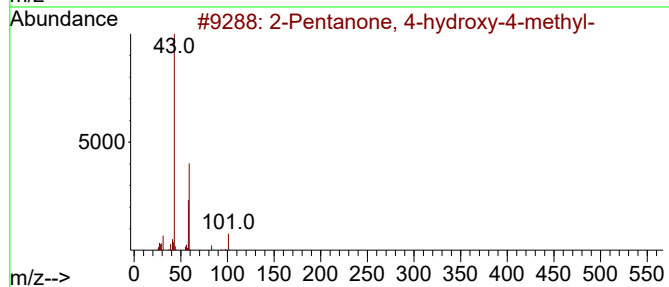
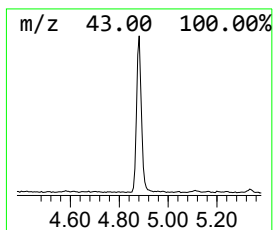
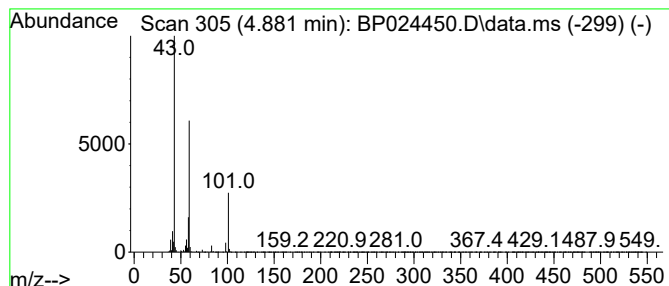
Quant Method : Z:\svoasrv\HPCHEM1\BNA_P\Methods\8270E-BP041425.M
 Quant Title : ASP BNA STANDARDS FOR 5 POINT CALIBRATION

TIC Library : C:\Database\NIST20.L
 TIC Integration Parameters: LSCINT.P

 Peak Number 1 2-Pentanone, 4-hydroxy-4-me... Concentration Rank 3

R.T.	EstConc	Area	Relative to ISTD	R.T.
4.881	4.63 ng	206547	1,4-Dichlorobenzene-d4	7.716

Hit#	of 5	Tentative ID	MW	MolForm	CAS#	Qual
1		2-Pentanone, 4-hydroxy-4-methyl-	116	C6H12O2	000123-42-2	72
2		Succinic acid, heptyl 2-methoxye...	274	C14H26O5	1000325-80-7	33
3		Tetraglyme	222	C10H22O5	000143-24-8	32
4		Hydrazine, 1,1-bis(1-methylethyl)-	116	C6H16N2	000921-14-2	28
5		Acetic acid, cyano-, 1,1-dimethy...	141	C7H11NO2	001116-98-9	25



Data Path : Z:\svoasrv\HPCHEM1\BNA_P\Data\BP042825\
 Data File : BP024450.D
 Acq On : 28 Apr 2025 23:49
 Operator : RC/JU
 Sample : Q1896-01
 Misc :
 ALS Vial : 17 Sample Multiplier: 1

Instrument :
 BNA_P
 ClientSampleId :
 295-BERGEN-RO

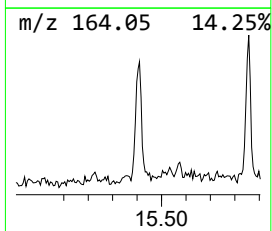
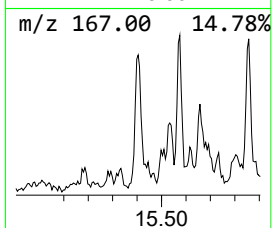
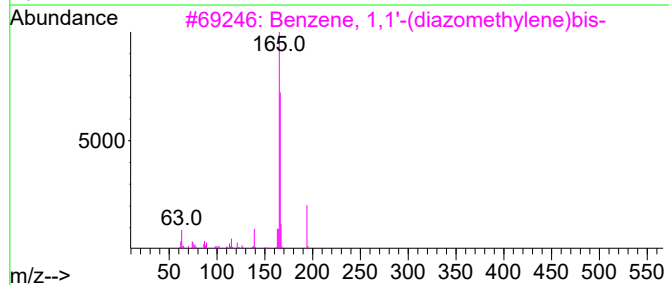
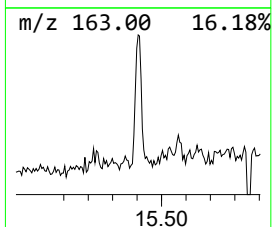
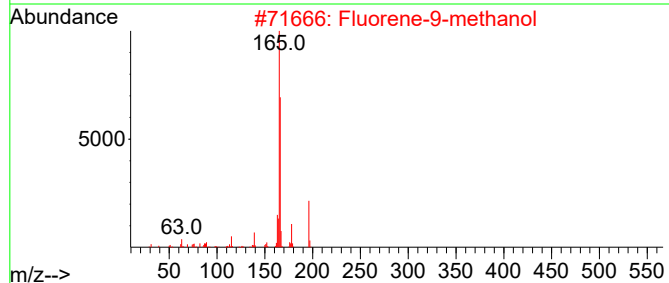
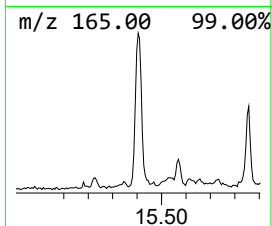
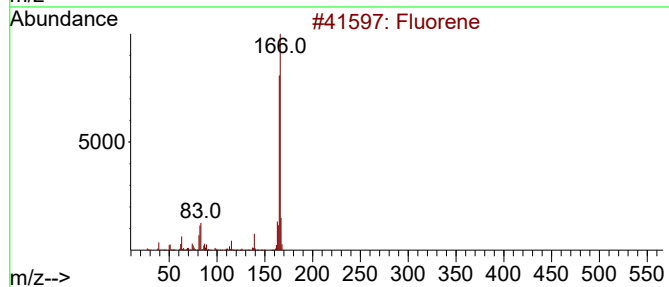
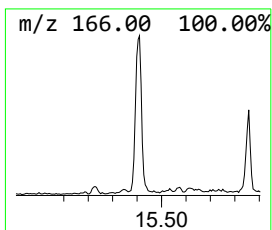
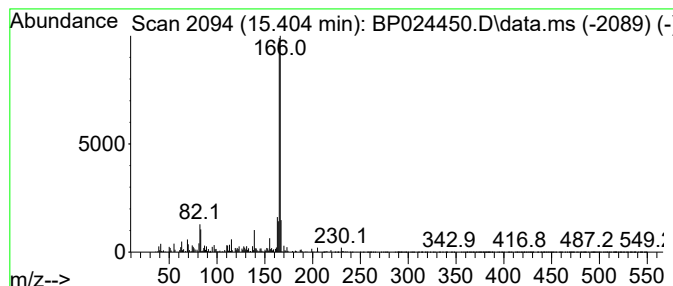
Quant Method : Z:\svoasrv\HPCHEM1\BNA_P\Methods\8270E-BP041425.M
 Quant Title : ASP BNA STANDARDS FOR 5 POINT CALIBRATION

TIC Library : C:\Database\NIST20.L
 TIC Integration Parameters: LSCINT.P

 Peak Number 2 Fluorene-9-methanol Concentration Rank 6

R.T.	EstConc	Area	Relative to ISTD	R.T.
15.404	2.39 ng	212260	Acenaphthene-d10	14.339

Hit#	of	5	Tentative ID	MW	MolForm	CAS#	Qual
1			Fluorene	166	C13H10	000086-73-7	95
2			Fluorene-9-methanol	196	C14H12O	024324-17-2	83
3			Benzene, 1,1'-(diazomethylene)bis-	194	C13H10N2	000883-40-9	78
4			Benzaldehyde, 2,4-dihydroxy-3,6-...	166	C9H10O3	034883-14-2	64
5			Benzaldehyde, 2-hydroxy-4-methox...	166	C9H10O3	034883-08-4	64



Data Path : Z:\svoasrv\HPCHEM1\BNA_P\Data\BP042825\
 Data File : BP024450.D
 Acq On : 28 Apr 2025 23:49
 Operator : RC/JU
 Sample : Q1896-01
 Misc :
 ALS Vial : 17 Sample Multiplier: 1

Instrument :
 BNA_P
 ClientSampleId :
 295-BERGEN-RO

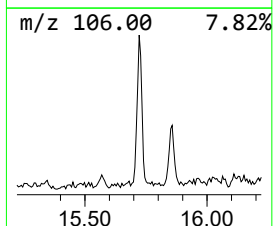
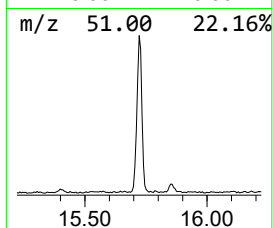
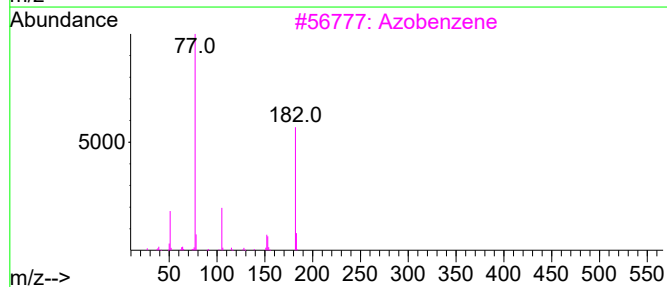
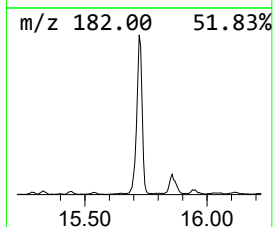
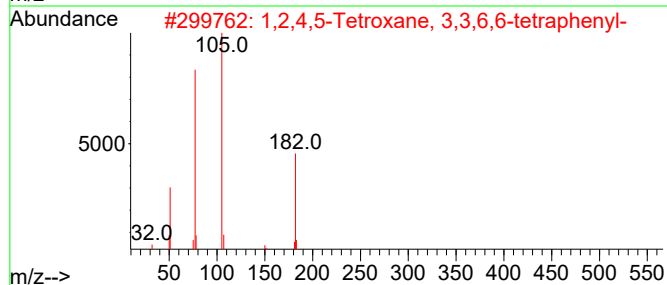
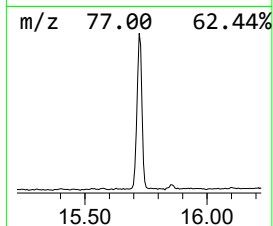
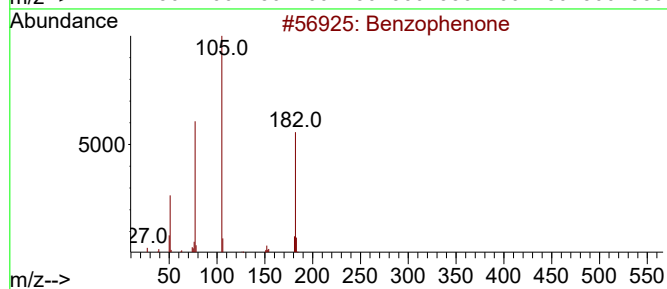
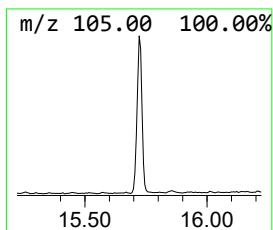
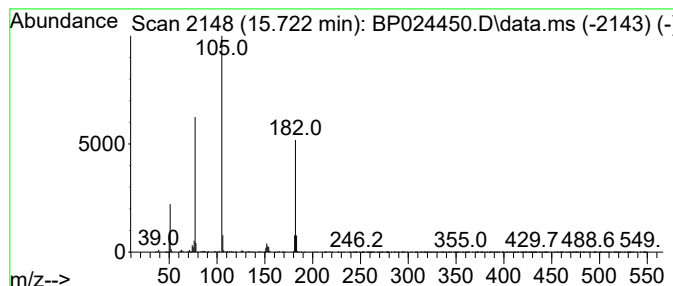
Quant Method : Z:\svoasrv\HPCHEM1\BNA_P\Methods\8270E-BP041425.M
 Quant Title : ASP BNA STANDARDS FOR 5 POINT CALIBRATION

TIC Library : C:\Database\NIST20.L
 TIC Integration Parameters: LSCINT.P

 Peak Number 3 Benzophenone Concentration Rank 2

R.T.	EstConc	Area	Relative to ISTD	R.T.
15.722	5.98 ng	531727	Acenaphthene-d10	14.339

Hit#	of 5	Tentative ID	MW	MolForm	CAS#	Qual
1		Benzophenone	182	C13H10O	000119-61-9	96
2		1,2,4,5-Tetroxane, 3,3,6,6-tetra...	396	C26H20O4	016204-36-7	64
3		Azobenzene	182	C12H10N2	000103-33-3	64
4		Methanone, phenyl-2-pyridinyl-	183	C12H9NO	000091-02-1	50
5		Benzenamine, N-(3-pyridinylmethyl-...	182	C12H10N2	029722-97-2	45



Data Path : Z:\svoasrv\HPCHEM1\BNA_P\Data\BP042825\
 Data File : BP024450.D
 Acq On : 28 Apr 2025 23:49
 Operator : RC/JU
 Sample : Q1896-01
 Misc :
 ALS Vial : 17 Sample Multiplier: 1

Instrument :
 BNA_P
 ClientSampleId :
 295-BERGEN-RO

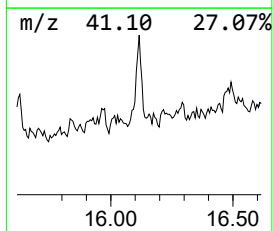
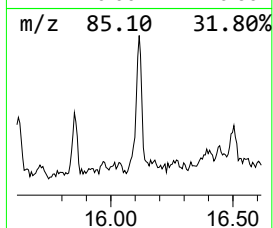
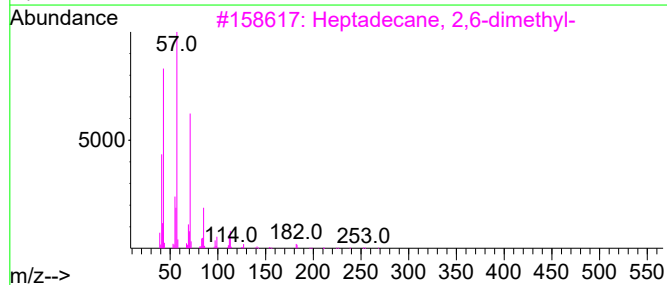
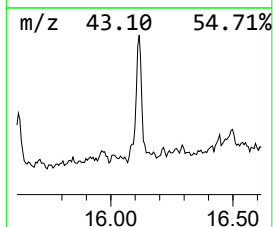
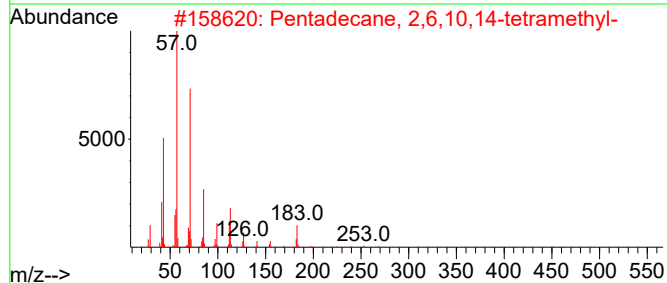
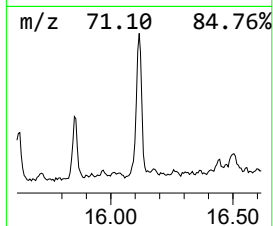
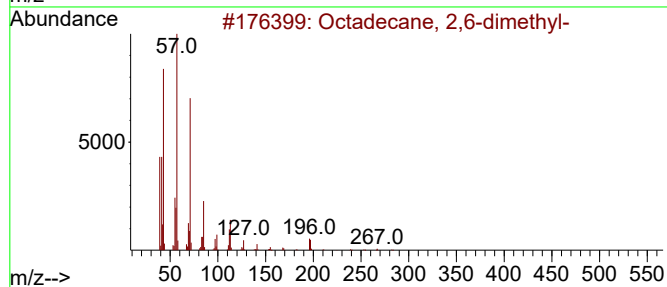
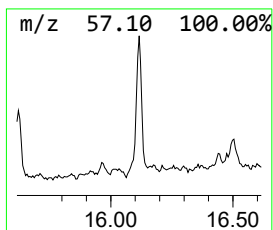
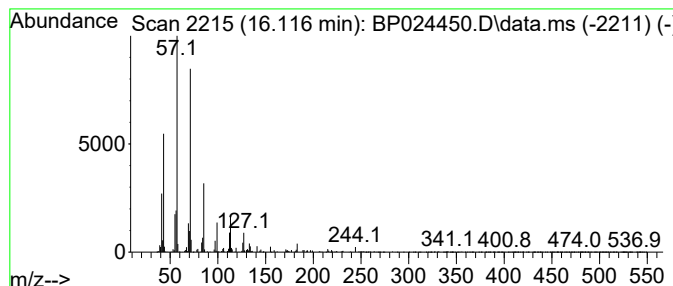
Quant Method : Z:\svoasrv\HPCHEM1\BNA_P\Methods\8270E-BP041425.M
 Quant Title : ASP BNA STANDARDS FOR 5 POINT CALIBRATION

TIC Library : C:\Database\NIST20.L
 TIC Integration Parameters: LSCINT.P

 Peak Number 4 Octadecane, 2,6-dimethyl- Concentration Rank 7

R.T.	EstConc	Area	Relative to ISTD	R.T.
16.116	2.21 ng	232780	Phenanthrene-d10	17.139

Hit#	of 5	Tentative ID	MW	MolForm	CAS#	Qual
1		Octadecane, 2,6-dimethyl-	282	C20H42	075163-97-2	86
2		Pentadecane, 2,6,10,14-tetramethyl-	268	C19H40	001921-70-6	80
3		Heptadecane, 2,6-dimethyl-	268	C19H40	054105-67-8	80
4		Hexadecane, 2,6,10,14-tetramethyl-	282	C20H42	000638-36-8	80
5		Dodecane, 2,6,11-trimethyl-	212	C15H32	031295-56-4	72



Data Path : Z:\svoasrv\HPCHEM1\BNA_P\Data\BP042825\
 Data File : BP024450.D
 Acq On : 28 Apr 2025 23:49
 Operator : RC/JU
 Sample : Q1896-01
 Misc :
 ALS Vial : 17 Sample Multiplier: 1

Instrument :
 BNA_P
 ClientSampleId :
 295-BERGEN-RO

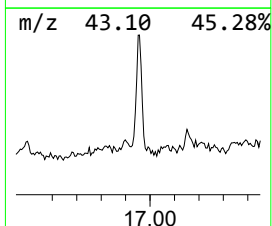
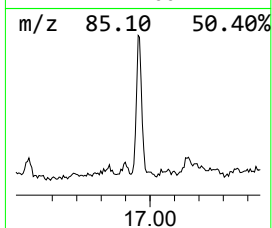
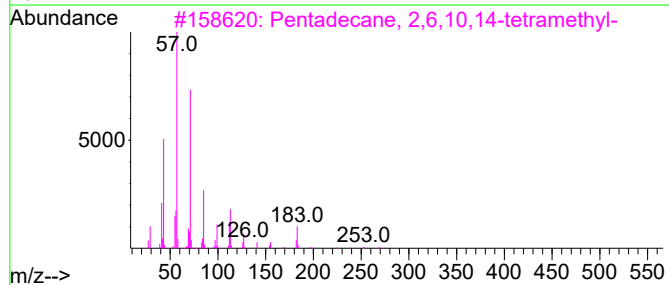
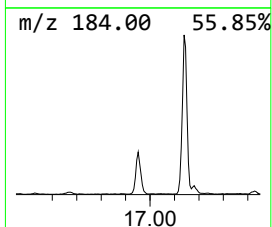
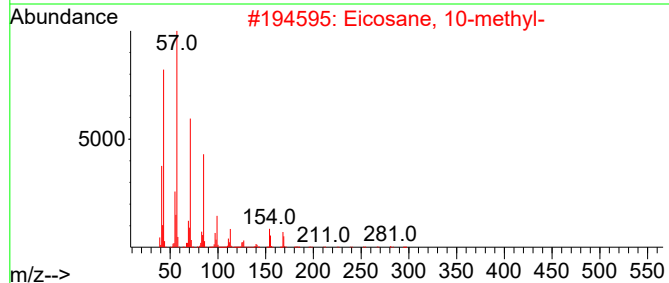
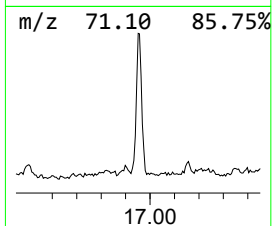
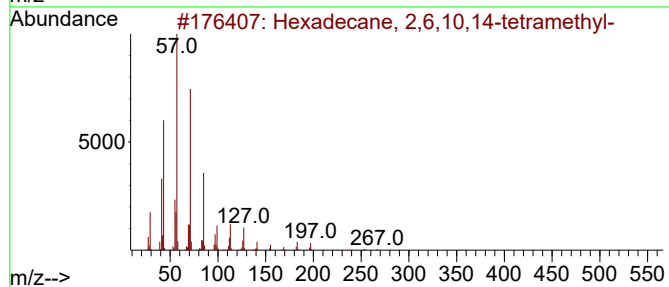
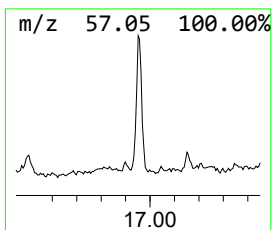
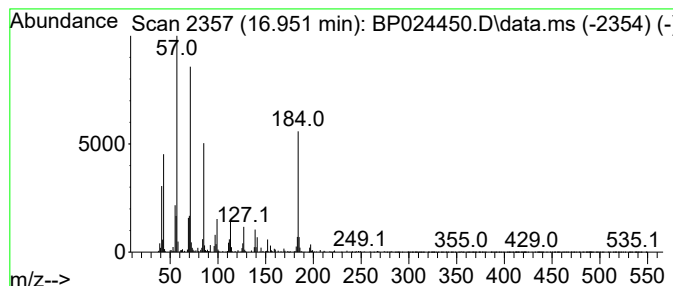
Quant Method : Z:\svoasrv\HPCHEM1\BNA_P\Methods\8270E-BP041425.M
 Quant Title : ASP BNA STANDARDS FOR 5 POINT CALIBRATION

TIC Library : C:\Database\NIST20.L
 TIC Integration Parameters: LSCINT.P

 Peak Number 5 Hexadecane, 2,6,10,14-tetra... Concentration Rank 4

R.T.	EstConc	Area	Relative to ISTD	R.T.
16.951	4.40 ng	462843	Phenanthrene-d10	17.139

Hit#	of 5	Tentative ID	MW	MolForm	CAS#	Qual
1		Hexadecane, 2,6,10,14-tetramethyl-	282	C20H42	000638-36-8	98
2		Eicosane, 10-methyl-	296	C21H44	054833-23-7	86
3		Pentadecane, 2,6,10,14-tetramethyl-	268	C19H40	001921-70-6	83
4		Docosane	310	C22H46	000629-97-0	68
5		Heptadecane, 9-octyl-	352	C25H52	007225-64-1	64



Data Path : Z:\svoasrv\HPCHEM1\BNA_P\Data\BP042825\
 Data File : BP024450.D
 Acq On : 28 Apr 2025 23:49
 Operator : RC/JU
 Sample : Q1896-01
 Misc :
 ALS Vial : 17 Sample Multiplier: 1

Instrument :
 BNA_P
 ClientSampleId :
 295-BERGEN-RO

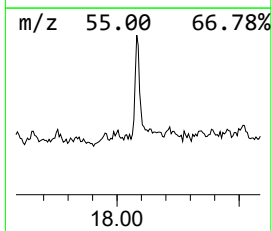
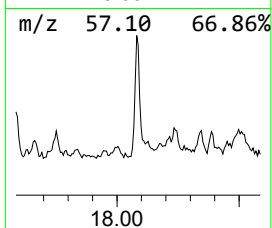
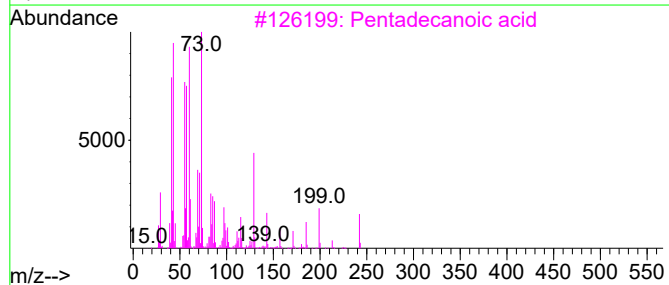
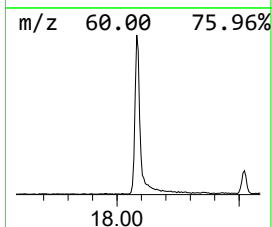
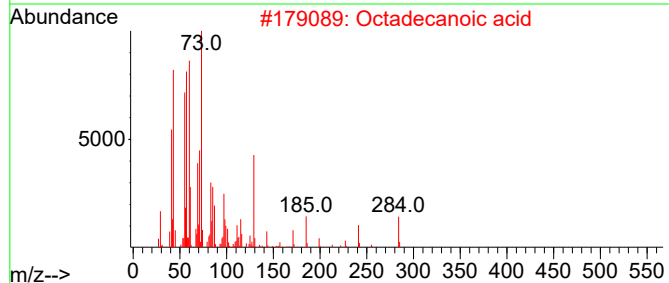
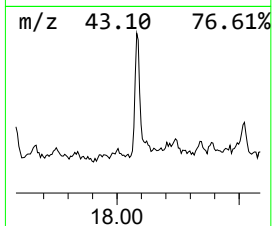
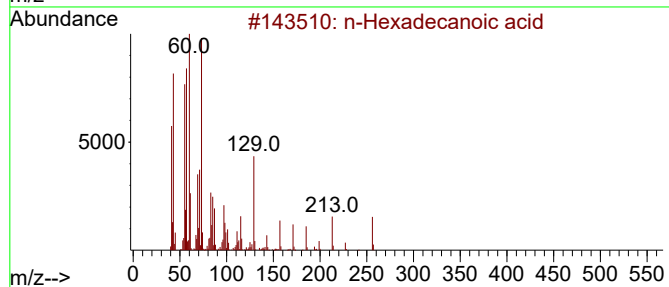
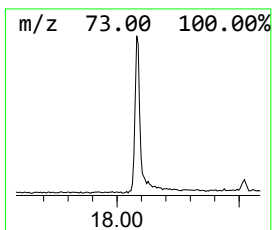
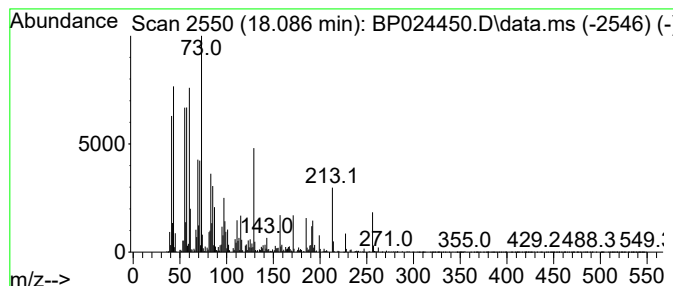
Quant Method : Z:\svoasrv\HPCHEM1\BNA_P\Methods\8270E-BP041425.M
 Quant Title : ASP BNA STANDARDS FOR 5 POINT CALIBRATION

TIC Library : C:\Database\NIST20.L
 TIC Integration Parameters: LSCINT.P

 Peak Number 6 n-Hexadecanoic acid Concentration Rank 1

R.T.	EstConc	Area	Relative to ISTD	R.T.
18.086	7.76 ng	816323	Phenanthrene-d10	17.139

Hit#	of 5	Tentative ID	MW	MolForm	CAS#	Qual
1		n-Hexadecanoic acid	256	C16H32O2	000057-10-3	99
2		Octadecanoic acid	284	C18H36O2	000057-11-4	87
3		Pentadecanoic acid	242	C15H30O2	001002-84-2	87
4		Tridecanoic acid	214	C13H26O2	000638-53-9	81
5		Tetradecanoic acid	228	C14H28O2	000544-63-8	80



Data Path : Z:\svoasrv\HPCHEM1\BNA_P\Data\BP042825\
 Data File : BP024450.D
 Acq On : 28 Apr 2025 23:49
 Operator : RC/JU
 Sample : Q1896-01
 Misc :
 ALS Vial : 17 Sample Multiplier: 1

Instrument :
 BNA_P
 ClientSampleId :
 295-BERGEN-RO

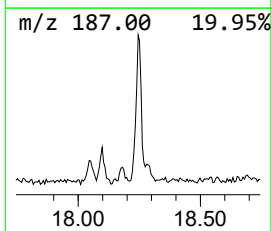
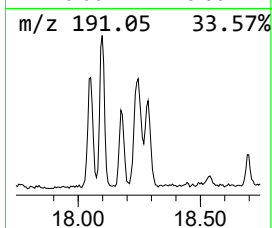
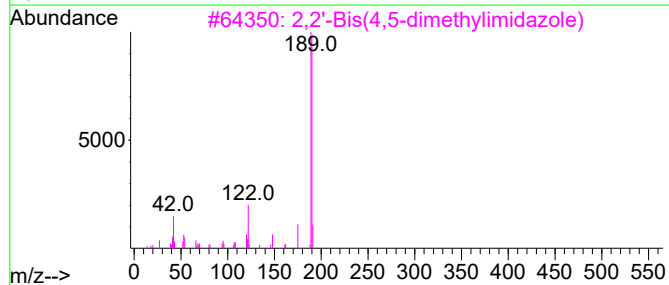
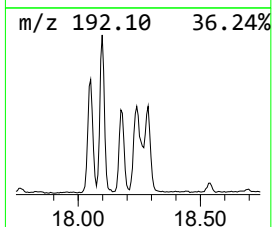
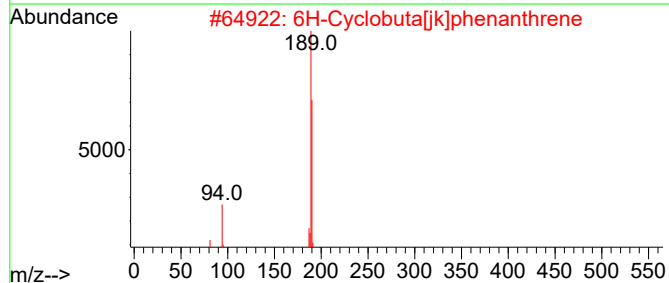
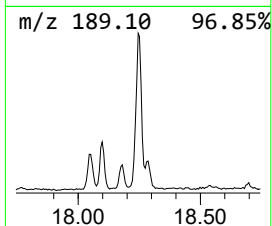
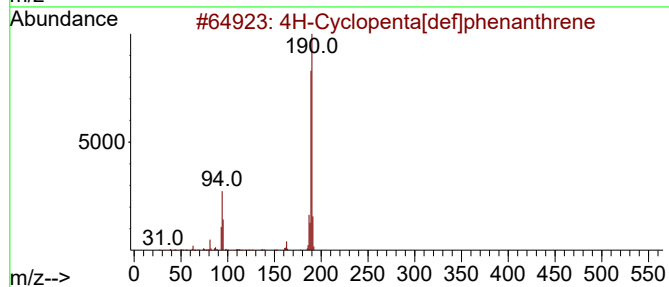
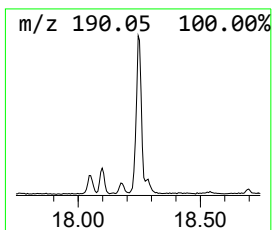
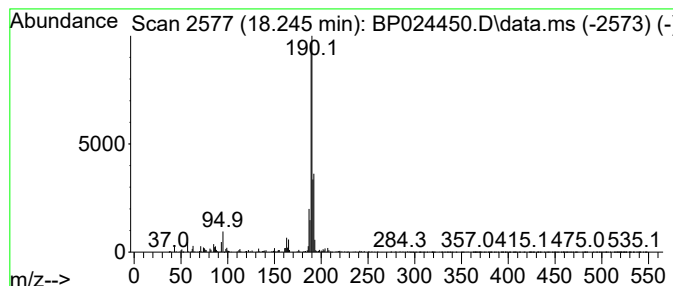
Quant Method : Z:\svoasrv\HPCHEM1\BNA_P\Methods\8270E-BP041425.M
 Quant Title : ASP BNA STANDARDS FOR 5 POINT CALIBRATION

TIC Library : C:\Database\NIST20.L
 TIC Integration Parameters: LSCINT.P

 Peak Number 7 4H-Cyclopenta[def]phenanthrene Concentration Rank 5

R.T.	EstConc	Area	Relative to ISTD	R.T.
18.245	2.69 ng	283084	Phenanthrene-d10	17.139

Hit#	of	5	Tentative ID	MW	MolForm	CAS#	Qual
1			4H-Cyclopenta[def]phenanthrene	190	C15H10	000203-64-5	81
2			6H-Cyclobuta[jk]phenanthrene	190	C15H10	083469-43-6	64
3			2,2'-Bis(4,5-dimethylimidazole)	190	C10H14N4	069286-06-2	42
4			Cyclohexanone, 2-(2-furanylmethy...	190	C12H14O2	056053-07-7	27
5			Megastigmatrienone	190	C13H18O	038818-55-2	25



Data Path : Z:\svoasrv\HPCHEM1\BNA_P\Data\BP042825\
 Data File : BP024450.D
 Acq On : 28 Apr 2025 23:49
 Operator : RC/JU
 Sample : Q1896-01
 Misc :
 ALS Vial : 17 Sample Multiplier: 1

Instrument :
 BNA_P
 ClientSampleId :
 295-BERGEN-RO

Quant Method : Z:\svoasrv\HPCHEM1\BNA_P\Methods\8270E-BP041425.M
 Quant Title : ASP BNA STANDARDS FOR 5 POINT CALIBRATION

TIC Library : C:\Database\NIST20.L
 TIC Integration Parameters: LSCINT.P

TIC Top Hit name	RT	EstConc	Units	Response	--Internal Standard--			
					#	RT	Resp	Conc
2-Pentanone, 4-...	4.881	4.6	ng	206547	1	7.716	891528	20.0
Fluorene-9-meth...	15.404	2.4	ng	212260	3	14.339	1779300	20.0
Benzophenone	15.722	6.0	ng	531727	3	14.339	1779300	20.0
Octadecane, 2,6...	16.116	2.2	ng	232780	4	17.139	2104750	20.0
Hexadecane, 2,6...	16.951	4.4	ng	462843	4	17.139	2104750	20.0
n-Hexadecanoic ...	18.086	7.8	ng	816323	4	17.139	2104750	20.0
4H-Cyclopenta[d...	18.245	2.7	ng	283084	4	17.139	2104750	20.0